

2006-2007 ANNUAL REPORT



New Faces, New Places

MUHLENBERG
COLLEGE

MUHLENBERG COLLEGE

2400 West Chew Street
Allentown PA 18104-5586
www.muhlenberg.edu



2006-2007 Annual Report

The School of Athens mural, painted by Raphael, provides an inspirational visual message upon entering the new science building.

Same Ship, New Voyage

In the Age of Heroes, when Prince Theseus sailed home to Athens after slaying the Minotaur, his fellow citizens placed his ship in the public marketplace as a monument to his feat. Over the centuries, as decayed planks were mended with new ones, philosophers began to debate whether this was in fact the same ship – or a different one entirely.

THESEUS' SHIP IS AN APT METAPHOR for a dynamic college like ours. Muhlenberg, of course, is not a holy relic to be kept hermetically sealed, preserved and protected from change. But it is a sacred trust. And while this year's annual report highlights "new faces and new places," these innovations would not be worth celebrating if they did not sustain and renew an institution with a strong and positive sense of its history, its values, and its mission. The "new" is noteworthy only if it enhances and augments the intrinsic good of this place. There should never be any doubt that Muhlenberg was, is, and always will be...Muhlenberg. Within these pages you will find much that, by this criterion, is both new and worthy of celebration.

- M** 86,000 square feet of new and renovated science laboratories and classrooms, capitalizing on and extending our College's long and distinguished record of preparing physicians, researchers and other scientists to serve society. This ambitious project has linked and integrated Muhlenberg's science buildings into a unified complex, while beautifying the campus core.
- M** A greatly expanded Career Center and Academic Resource Center in Seegers Union.
- M** The introduction of a new campus eatery, "Sandella's," in the Red Door Café.
- M** A new residence hall – completed in an astounding five months from groundbreaking to move-in – that has garnered compliments from neighbors for its sensitivity to neighborhood architectural standards.
- M** The razing – at long last – of MacGregor Village's 26-year-old "temporary" dorms, in preparation for the creation of a new, permanent and more attractive "Village."
- M** The creation of a new Multicultural Center housing international programs, multicultural programs, classroom and student space – visibly and dramatically affirming our campus commitment to diversity.

In addition to these new places (and over \$2.4 million of renovations to cherished existing buildings like Trumbower, Haas, Ettinger and East Halls, among other campus facilities), we have welcomed new friends and colleagues to the campus and added new offerings to the curriculum:

- M** A new dean of students, Karen Green, has put her own stamp on campus while winning student respect and affection.
- M** New tenure-track positions were approved last year in neuroscience and sociology/anthropology, and a visiting artist line was approved for film studies; new tenure-track positions for art history, music and organismal biology are on deck for national searches during the coming year.



- M** 31 students have already enrolled in our new public health minor; 11 students are already majoring in our new film studies program; and a new minor has been approved in African-American studies. Biology, theatre and dance, and accounting/business/economics continue to be our three most popular majors.

We have other achievements to celebrate as well:

- M** Muhlenberg was included in the President's Higher Education Community Service Honor Roll, recognizing our community's consistent and continuing emphasis on community service and service learning.
- M** Our endowment reached another record - \$132.9 million – in April. And though we still have only one-third the endowment-per-student of our peer competitors, we have kept our student charges approximately 10% lower than these benchmark institutions and still balanced our budget for the 52nd consecutive year.
- M** We were named #34 in Kiplinger Magazine's 100 Most Affordable Private Liberal Arts Colleges and #6 in Consumer Digest's Best Values in Higher Education.
- M** Parent giving to the College reached remarkable levels: 69.7% of current parents made gifts during FY'06 and 75.6% in FY'07 – an extraordinary vote of confidence in the educational experience their sons and daughters are receiving.
- M** Our efforts in recycling, environmental sensitivity and sustainability continue to gather momentum. We recycled more than 330 tons of bottles and cans and 102 tons of paper and cardboard. We've replaced incandescent bulbs with more energy efficient compact fluorescent bulbs wherever feasible. We've introduced Fair Trade certified coffee to the Garden Room and use only "Green Seal" approved products when purchasing cleaning supplies, paper towels, toilet tissue and garbage bags. We have applied for LEED certification (see page 19) of the new science building as one of the Lehigh Valley's first "green" buildings. The Board of Trustees moved to a web-based "board book" – saving almost 75 reams of paper each year.

These achievements represent the work of many hearts and hands – faculty, staff, students, alumni, parents and trustees. Our beloved Muhlenberg remains on course and more seaworthy than ever, thanks to their efforts. Perhaps the most important conversation on campus during the past year occurred at the June Board Retreat, where we discussed the most fundamental

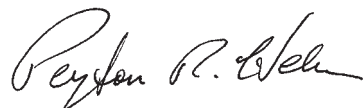
aspect of the College's values: its identity as a liberal arts college with strong and vital historical ties to the Lutheran church. In introducing this topic, I referred to an essay by former Muhlenberg religion professor Darrell Jodock, who wrote of five "interlocking characteristics" of Lutheran colleges:

- M** First, the College serves the community and educates community leaders.
- M** Second, the College strives for academic excellence.
- M** Third, the College honors freedom of inquiry.
- M** Fourth, the College embraces the ideal of the liberal arts.
- M** Fifth, the College organizes itself as a community of discourse.

These are the values that attracted me to Muhlenberg four years ago – and that make Muhlenberg not just a Lutheran institution – but an outstanding College. Our campus excels in each of these areas and, in the coming years, we will strengthen that commitment by becoming even better. *✍* What does the immediate future hold for our Muhlenberg?

- M** With the completion of the science expansion and renovation, we need to renovate Parents Plaza – the heart of campus – to make it as welcoming and attractive as the buildings now bordering it.
- M** We need to begin thinking about how to relocate administrative and support functions now occupying the campus core so as to create more green space between Scotty Wood Stadium and the buildings on Academic Row.
- M** We must consult broadly and plan carefully for phase two of the Seegers Union expansion and renovation project – focusing on expanding and improving dining facilities, improved kitchen and servery, more office space for student organizations and a screening room for film studies and campus movies.
- M** Our faculty must complete their review of the curriculum, ensuring that Muhlenberg's graduation requirements are responsive to the challenges that 21st century life will throw at our graduates.
- M** We need to begin implementation of the Senior Year Experience Task Force recommendations (<http://www.muhlenberg.edu/mgt/presoff/sye/SYEDraft.pdf>), including a reorientation for seniors, a one-stop senior class website and (eventually) mentoring opportunities.

To accomplish these goals and continue the impressive institutional momentum of recent years will demand that all members of the Muhlenberg family – especially alumni and parents – recommit themselves to this College. *✍* We are now in the quiet phase of a great comprehensive campaign that will enable us to achieve the distinction that is almost within our grasp. Success will demand sacrifice, but "what must be done can be done." To return to the metaphor of Theseus' ship, we will need all hands on the oars, and pulling in the same direction! You will be hearing more about this in the year to come. *✍* When you return to Muhlenberg, as I encourage you to do, you will find many changes to the campus but also, I hope, will encounter the same spirit and character that have always distinguished our College and, God willing, always shall.



Peyton R. Helm, Ph.D.
President

PRESIDENT'S STAFF (LEFT TO RIGHT): Chris Hooker-Haring '72, dean, admission and financial aid; Ken Butler, executive assistant to the president; Rev. Peter Bredlau, College chaplain; Peyton Randolph Helm, Ph.D., president; Kent Dyer, chief business officer and treasurer; Karen Green, vice president for student affairs and dean of students; Marjorie Hass, Ph.D., provost; Tilghman Moyer, vice president, development and alumni relations; Michael Bruckner, vice president, public relations. Location: the new student residential Village on campus.



Academic Choices Expand

AS DYNAMIC NEW FORCES CHANGE SOCIETY – such as technology, demographics, economic challenges and media – Muhlenberg strives to blend its liberal arts mission with current societal needs and opportunities. ✂

“Over the past year, we’ve added several important academic programs,” says Marjorie Hass, provost. “Our purpose is to serve our student population with new challenges that satisfy our liberal arts philosophy of learning by integrating service to society and learning in the classroom against the backdrop of an ever-changing world.” ✂ The College introduced two new majors over the past year: film studies and finance, which this year had charter enrollments of 11 and 49 students, respectively. ✂ Students studying film at Muhlenberg College now have the option to learn the theory and practice of film, discover the cinema of diverse cultures, examine the political significance of the moving image and master cinematography, sound, mise-en-scene, and editing. ✂



Marjorie Hass, Ph.D.
Provost

The film studies program helps students understand the technical and expressive components of the cinematic medium, and gain practical experience in film production within the framework of a liberal arts education. Students are exposed to many different genres of film, including classic Hollywood cinema, but also documentary, independent and experimental film along with the rich traditions of world cinema. The production component of the curriculum gives every student the opportunity for hands-on experience, allows motivated students to pursue additional work in screenwriting, acting and directing, as well as advanced film and video production. ✂ The **finance major** is offered by the accounting, business and economics department. It provides students with a comprehensive understanding of the principles that underlie the operation and functions of financial markets and the analytical and quantitative skills needed for an understanding of current financial issues, practices and policies. Additionally, the major prepares students for graduate work in business and finance and careers in banking, insurance, investments and corporate financial planning. The accounting, business and economics department supervises an endowed, student run Investment Society, which has direct applicability to this major. Course offerings include monetary economic policy, math for financial analysis and corporation finance. ✂ Two interdisciplinary minors have been added to the academic roster: Public health and African-American studies. ✂ **Public health** focuses on the protection and improvement of health for individuals, communities and populations at risk for injury and disease. The curriculum extends across the natural sciences, mathematics, social sciences and humanities to educate and empower students about health-related issues and create a better understanding of public policy issues, health education and other main areas of public health. Dr. Susan Kahlenberg, assistant professor of media and communication, is program director. ✂ **The African-American studies minor** draws on courses from the departments of English, dance, theatre, media and communication, music, anthropology, history, sociology, political science and languages. The goal of the program is to enable students to enhance their understanding of African-Americans’ unique social circumstances and heritage. The minor complements the recent opening of the College’s multicultural center. Charles O. Anderson, assistant professor of dance, is serving as program director.

Governor’s Academy for Urban Education Returns for Sixth Year

The 2007 Governor’s Academy for Urban Education was held at Muhlenberg College June 23-28. Approximately 250 educators from throughout the Commonwealth attended sessions related to urban issues as well as academic standards in language arts and mathematics. The event, sponsored by the Pennsylvania Department of Education and co-sponsored by the State System of Higher Education and Muhlenberg College, offered successful participants two graduate credits applied to Act 48 certification requirements. ✂ The program emphasized professional development that provides ways to suc-



cessfully differentiate instruction for diverse learners; coordination between language arts and mathematics faculty to create tools and examples for the integration of mathematics and language arts instruction; and opportunities to dialogue with colleagues about instructional and educational concepts. ✂ Language arts standards addressed learning to read independently and types of writing, reading critically with a focus on mathematics and science reading, analyzing and interpreting literature, and characteristics and functions of the English language. Mathematical standards included num-

bers, number systems, and number relationships, measurement and estimation, mathematical reasoning, mathematical problem solving and communication, and algebra. Other sessions enabled educators to address educational issues in an urban setting, implement technology tools for effective instruction, incorporate assessment methodologies and understand and interpret PSSA scoring rubrics. ✂ Susan Byrne, director of student teaching, served as the conference coordinator for Muhlenberg College and was assisted by Dr. George Bonekemper, PDS coordinator. Cathy Kim, literacy professor at Muhlenberg, and Mary Ann Siegle, a teacher at Trexler Middle School, conducted the language arts workshop for middle level teachers. Participants included representatives from Allentown, Coatesville, Erie, Johnstown, Lancaster, Philadelphia, Pittsburgh, Pottstown and Reading School Districts.

Top Declared Majors

Fall 2006

Business Administration
Psychology
Theatre
Media and Communication
English



Communication students promote physical health in a public awareness campaign, seen here in Seegers Union.



New Dean of Students,
Karen Green, arrives.

Admissions yield rate jumps, creating housing crunch; 24 juniors reassigned to Tremont Apartments.

Muhlenberg Reaccredited by Middle States Higher Education Authority (MSHEA).



Official statistics show campus crime is down over the past year.

New science building completed in time for beginning of the semester.



New Career Center completed in Seegers.

TIMELAPSE WEBCAM

2201 Chew Street construction progress...
October 31, 2006



Scholarship Pays Off

SINCE 1998, the College has made a concerted effort to assist undergraduate students win prestigious national awards that will financially augment successful graduate study. In the 2007-2008 academic year, several students, who took advantage of a mock application process that the College offers as career support, earned financial awards for further study. They are:



Kate Haggerty '07

A Dana scholar and pre-med student, Kate was a finalist in the NCAA postgraduate scholarship. As a double major in biology and Spanish, Kate was a volleyball starter since her first year. She maintained an excellent GPA and was a peer tutor.



Matthew Loesch '07

Also a finalist for an NCAA postgraduate scholarship, Matt was a psychology and business administration double major who will pursue a Ph.D. in industrial organizational psychology at Old Dominion University. At Muhlenberg, Matt was a three-time All-America wrestler, a three-time Academic All-America, a four-time Centennial Conference Champion and a four-time 1st Team All-Centennial Conference winner. He was undefeated against all Centennial Conference opponents he faced.



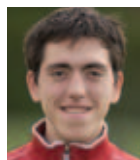
Laura Sheard '07

A neuroscience major and RJ Fellow, Laura was a Goldwater finalist for two years. As a finalist for a Fulbright Scholarship to India, she will be pursuing a Ph.D. in pharmacology at the University of Washington. She has had extensive and varied research experience and received a Muhlenberg College summer research stipend for her work on "Key domains in the recognition of allopregnanolone of GABBA receptors."



Nicole Washburn '07

Nicole earned an NCAA post-scholarship award after leading the Mules softball team for four years as a pitcher. A pre-med student, Nicole held a 3.822 GPA and graduated Phi Beta Kappa with highest honors. A biology major, she will pursue a Ph.D. in pharmacology at the University of Connecticut.



John Santa Maria '08

An RJ Fellow, John is a biochemistry and mathematics double major who has been awarded a Barry M. Goldwater Scholarship. This scholarship is designed to support students who intend to pursue a career in science or math at an advanced level. Experience in research is an important component to this application, and John worked on research with Dr. Amy Hark, assistant professor, biology. Applicants typically have a 3.9 or above GPA.



Ryan Chapoteau '08

Ryan is a political science major with interests in education and public policy. The New Horizon scholarship from the Thurgood Marshall College Fund that Ryan earned is for students of Hispanic or African-American heritage.



Emma Bartholomew '09

A Muhlenberg scholar, Emma is a philosophy and English double major who has earned the McFarland award, the top endowed scholarship in the St. Andrew's Society for study at the University of Edinburgh. Her submission included a discussion of her interest in philosophy and music. The scholarship amounts to \$17,000.

Career Center Performs



THIS PAST YEAR, THE CAREER CENTER EMERGED with a new department name (formerly the Office of Career Development and Placement), a new office suite, a new logo, a revamped website (www.muhlenberg.edu/careercenter), and a revised mission statement:

The new and improved Career Center promotes career development by encouraging students to integrate their academic and co-curricular experiences and inspiring them to:

- M EXPLORE** Increase awareness of interests, skills and values; gather information and experience to assist with informed decision making; promote curiosity about the world in anticipation of lives of leadership and service.
- M PREPARE** Develop tools, strategies, skills and knowledge related to goals; improve ability to understand and communicate the value of an aggregate Muhlenberg experience; consider the challenges of college to career transition and plan for lifelong learning.
- M CONNECT** Network with and obtain information from people, organizations and other resources that will help meet career goals.

The Career Center inspired students to take advantage of services with new events such as the Just-in-Time Job Fair, the Senior Transition Workshops and many guest speakers and panels on select career topics such as investment banking, performance careers and the intelligence community. Student interest has increased, with almost 600 additional contacts this past year, due in part to increased attendance at Career Center events.

The Career Center's recruiting program yielded positive results as well. There was almost a 50 percent increase in the number of resumes submitted for jobs and a 12 percent increase in the number of employers. On-campus interviews made a comeback, up 41 percent. This increase in activity led to a surge in the number of job offers received through on-campus recruitment efforts.

This year, the Center began to monitor and evaluate the quality of counseling appointments. Evaluation results as noted by students are very high, with every respondent indicating he or she would recommend the Career Center. Below are the results based on a possible highest score of five:

I am satisfied with the quality of service received	4.75*
My counselor was knowledgeable	4.79*
Overall, counseling was helpful to me	4.70*

*on a 5.0 scale



New Muhlenberg Multicultural Center opens.



Center for Ethics kicks off "Freedom Matters" series of lectures, panels and workshops.



Professor Larry Hass's Theory and Art of Magic series offered a scholarly conference, several performances and was highlighted by a presentation and lecture by Teller (of Penn and Teller).

Mellon-funded Faculty Study Group formed to evaluate the diversity requirement.

Presidential Task Force formed to strengthen the Senior Year Experience.

Brief "crime wave" at 22nd and Liberty is stopped by increased patrols and "Campus Rangers."

TIMELAPSE WEBCAM

2201 Chew Street construction progress...
November 8, 2006





Muhlenberg students at Mt. Hua, Xian, China

Tales from International Trails

THERE ARE MANY WAYS to study International Relations at Muhlenberg: as part of regular coursework; as an International Studies minor; or as a Study Abroad component to any major for credit. The International Studies minor offers cluster concentrations in Europe, Asia, Latin America and Middle East. Forty-three percent of 2007 graduates had a study abroad experience during their four years at Muhlenberg College. The majority of them went for a semester during their junior year. During the 2006-2007 academic year, 200 students studied off-campus for a semester or longer in 19 countries and Washington, D.C. For the first time, students studied in Egypt, Kenya, Russia and the Ukraine. Faculty also led several short-term programs to Costa Rica, Italy and China, which engaged another 50 students in educational experiences outside U.S. borders.

Global Study Highlights

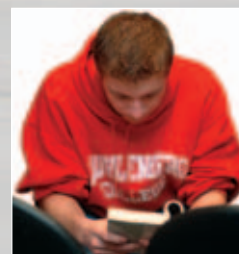
- M 23 students taking the "Emperors, Ecclesiastics and the Economy of Rome" course traveled to Rome over semester break with Dr. Sam Laposata, visiting professor of economics, and Gail Eisenberg, lecturer of business. The students explored Rome, Naples, Florence, Pompeii, Tivoli Gardens, the Vatican and the Jewish Ghetto. The study abroad program attracted students from many different majors. Commented Professor Laposata, "Topics chosen by students after the trip were presented with enthusiasm and completeness well beyond the usual. They did wonderful, inspired work in the classroom."

Ground broken for new residence hall at 22nd and Chew Streets next door to Millerheim.



Dean Green launches Muhlenberg's new gospel choir.

Marathon reading of the Iliad (18 hours long) involves approximately 60 faculty, staff, students, alumni and neighbors.



Muhlenberg faculty members Anne W. Esacove and Tammy L. Lewis, both members of the sociology and anthropology department, are awarded Fulbright Scholar grants to research during the 2006-2007 academic year.

- M Dr. Rich Niesenbaum, professor of biology, took several science students to Muhlenberg's partner community in Las Juntas, Costa Rica, in spring 2007 for an interdisciplinary experience where students explored issues related to environment and public health within the context of culture, history, economic and social relationships in developing Latin America.
- M Mary Lawlor, associate professor of English and director of the American Studies program, worked with 14 students at Muhlenberg's third annual United Nations program at the conference of the Permanent Forum for Indigenous Issues with Irene Beibe, assistant professor of Spanish, who accompanied them and provided translation services.
- M Art professor Scott Sherk reported that three Muhlenberg students took advantage of an internship program in Florence, Italy. Katie Prescott '08 worked as a photojournalist for a newspaper; Anneliese Juergensen '08 painted scenes for a theatre; and Brooke Steinhauser '09 did museum cataloging of a Japanese art collection while there.
- M Led by Janine Chi, Ph.D., assistant professor of sociology, several Muhlenberg students made the trek to the other side of the world, landing in Beijing on May 23, 2007 as part of a course entitled, "State(s) of China: From Oracle Bones to the Hard Rock Café." They examined the complex and sometime disparate socio-political and economic realities of ancient and contemporary Chinese society from archeological and sociological perspectives. Other stops were Xian and Shanghai, with constant comment on food and tourism. One student summed up the trip best, saying: "My family and I have traveled everywhere, but this was my best experience, traveling and studying with my peers."



Published Professors

- Bonekemper, Edward H. **McClellan and Failure: A Study of Civil War, Fear, Incompetence, and Worse.** Jefferson, NC: McFarland, 2007.
- Cartelli, Thomas, and Katherine Rowe. **New Wave Shakespeare on Screen.** Cambridge, UK: Polity Press, 2007.
- Cragin, Thomas. **Murder in Parisian Streets: Manufacturing Crime and Justice in the Popular Press, 1830- 1900.** Lewisburg, PA: Bucknell UP, 2006.
- Dunham, William. Ed. **The Genius of Euler: Reflections on His Life and Work.** Washington, DC: Mathematical Association of America, 2007.
- Kovats- Bernat, Christopher. **Sleeping Rough in Port-au-Prince: An Ethnography of Street Children and Violence in Haiti.** Gainesville, FL: University of Florida, 2006.
- Raymond, Arthur. **Study Guide for International Economics.** New York: Wiley, 2007.
- Rosenwasser, David, and Jill Stephen. **Writing Analytically with Readings.** Boston: Thomson, 2007. (Contains work by Joe Elliott, Chris Borick and Jim Peck.)
- Sherk, Scott. **GeoPhonoBox: Sonic Surveys of Place.** Chicago: Around the Coyote Gallery.
- Stein, Mark. **Guarding the Frontier: Ottoman Border Forts and Garrisons in Europe.** New York: Palgrave Macmillan, 2007.

TIMELAPSE WEBCAM

2201 Chew Street construction progress...
November 14, 2006



New Places, New Services, Same Cherished Values



Karen R. Green
Vice President,
Student Affairs
Dean of Students

ONE OF THE GREAT JOYS of a profession in academia is that the onset of each new year signals a beginning replete with many new faces and new places. This past year was no different. Student life became multi-dimensional this year, with many changes on campus and activities that sparked a real *esprit de corps* among students. Too numerous to mention, I will hit the high notes:



- M** An overwhelming number of first-year students accepted admission and this created a need for additional housing. The spring semester saw the opening of the facility at 2201 Chew Street.
- M** The beloved MacGregor Village had long outlived its original intent as 'temporary housing' erected in the early '80's. Immediately following commencement this spring, the buildings were razed to make ready the arrival of five new buildings.
- M** As students returned from spring break, they were introduced to Sandella's in the Red Door, a new venue offering a dining choice where flat bread is the basic ingredient for wraps, pizzas and quesadillas.
- M** The offices of Greek life, student activities, Seegers Union and community service and civic engagement worked on a design to shift existing space to accommodate an office for Student Council and a student organization resource room in Seegers Union.



Move In Day

- M** The office of campus safety and security was aided by the Campus Crime Watch Rangers, a volunteer group of students who assisted by patrolling the campus, providing escorts, checking for propped doors, etc.
- M** The Health Center signed a contract with a gynecologist to offer a women's health clinic each week. A group of students formed a peer education group to do programming in the residence halls concerning wellness and health awareness.

- M** Anita Kelly, director of the Counseling Center, was named advisor for the Gay Straight Alliance, and is working with students on housing issues, sponsored workshops and other programs. The student group, Students Against Sex Crimes, SASC, was re-organized.

MULTICULTURALISM GROWS IN FEELING, SONG, CELEBRATION

One of Dean Green's first acts was the formation of the Muhlenberg Gospel Choir, named Rejoice. They have performed for the wider Allentown community, the Board of Associates and the Board of Trustees.

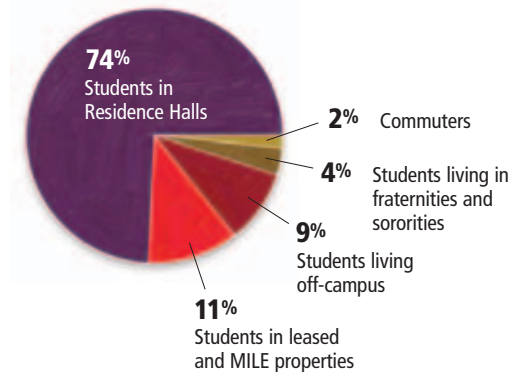


- M** The Health and Counseling Centers hosted a Board of Observers review.
- M** Homecoming 2006 was held in October with more than 1,000 alumni and friends returning to campus for a sunny weekend of Halloween-inspired activities, harvest foods and reunions by the classes of 1996, 2001, 2006 and others.
- M** The office of Greek Affairs was the beneficiary of the John Blend Award to assist Greek members with leadership opportunities beyond campus. The annual review accreditation process was launched and the Greek life committee made their recommendations to President Helm.
- M** The office of student activities hosted a major concert featuring Ben Folds.
- M** Two specific grants were bestowed to expand and appreciate diversity on campus. The Andrew W. Mellon Foundation awarded \$75,000 for building a diverse curriculum and \$15,000 was awarded by the Pennsylvania Historic and Museum Commission to collect oral histories of African-Americans living in the Lehigh Valley.
- M** "A Celebration in Song" was the name of the Martin Luther King Day event featuring many moving vocal performances and an address by keynote speaker, Reverend Dr. James A. Forbes, Jr., senior minister of the Riverside Church, New York City.
- M** A parent newsletter was launched and there was positive feedback. The newsletter will be distributed electronically each semester.



More than 300 people joined The Reverend Dr. James A. Forbes, Jr. and Multicultural Center Director Ethel Drayton-Craig in song and prayer during the Martin Luther King Celebration.

Living In & Around Muhlenberg

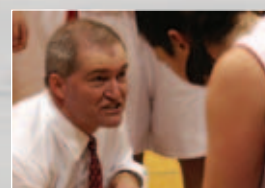


Exploring diversity through food at the new Multicultural Center



World famous pianist Claude Frank performs as a part of the College's Piano Series, a program that brings renowned musicians to campus.

More than 1,500 students, faculty, staff, alumni, parents and neighbors participate in 3 Candlelight Carol services in Egner Chapel.



Women's basketball celebrates Coach Rohn's 100th win.

Fair Trade coffee becomes standard in the Garden Room.



TIMELAPSE WEBCAM

2201 Chew Street construction progress...
November 15, 2006





Rev. Peter S. Bredlau
College Chaplain

On Faith & Values, On Campus

2006-2007 SAW A NUMBER OF NEW FACES AND PLACES in the religious life of students and leaders at Muhlenberg. At the Newman Center, our Roman Catholic campus ministry, a new constitution was drafted, which led to recognition and increased funding from student government. A ministry to Catholic staff and faculty has begun, led by associate admission director, Jenny McLarin. Finally, a “pancake palooza” attracted hundreds of students, who received the first three hundred t-shirts advertising Catholic campus ministry. ✂ Hillel has become active in the Taglit Birthright Israel program, which provided encouragement to over 40 students who visited Israel in the summer of 2007. Religious life presidential assistant Jason Bonder was drafted into the historic inaugural season of professional baseball in Israel. Jason is a pitcher for the Tel Aviv Lightning. ✂ A \$50,000 grant to underwrite new courses in the study of secular Jewish history was awarded by the Center for Cultural Judaism in conjunction with the Posen Foundation. ✂ Director of the Institute for Jewish-Christian Understanding, Dr. Peter A. Pettit, chaired the annual meeting of the Council of Centers for Jewish-Christian Relations, completing four years as chair of the council. He also chaired the joint consultation of the International Council of Christians and Jews and the World Council of Churches in Zurich, on the draft ecclesiology statement of Faith and Order. ✂ Lutheran students started a Lutheran Student Movement group to participate in regional and national retreats and events. Worship services in Egner Chapel now use the new Evangelical Lutheran Worship resource, which was introduced in 2007. More than 700 Lutherans from the Northeastern Pennsylvania Synod were welcomed to campus in June 2007 for a day of speakers, workshops and fellowship.

Religious Affiliation

	Fall 2006
Lutheran	7.3%
Non-Lutheran Protestant	13.5%
Catholic	30.2%
Eastern Orthodox	0.6%
Jewish	25.8%
Other	2.6%
No Affiliation	18.9%
No Report	1.1%

Students Serve and Learn

THE COLLEGE’S MISSION statement, which references preparing for lives of leadership and service, is evidenced by the exponential growth of those students engaged in community service and service learning. This program’s growth happened in part due to the dedication and passion of Valerie Lane, director, and Lindsey Knepp ’04, assistant director. Both Valerie and Lindsey made life decisions and departed from Muhlenberg for other opportunities. Their synergy will be missed, but the program continues to flourish due to the students who have been empowered by the opportunities they’ve encountered in working with the many community partners. A national search was conducted and two qualified individuals have accepted the challenge to continue to grow the office of community service and civic engagement. This is a change in the name that more clearly defines the kind of work that has evolved over the years. Beth Halpern, who received her master’s degree in higher education and student affairs from the Ohio State University, is now serving as director and Kate Cartwright, who received her master’s in English from Lehigh University, is the new assistant director. They both bring a wealth of experience in working with various approaches to service that include Habitat for Humanity, Oxfam, social justice projects with non-profit organizations and international experiences in Ecuador, Chile, Bolivia and Mexico, to name a few. ✂ The College was also selected by Student Horizons, Inc. as one of 86 “Colleges of Distinction” for recognition on the President’s Higher Education Community Service



Students pose after the 5K run in Lehigh Parkway to fight breast cancer (photo courtesy of John Hoffman).

2007 Community Service Award Recipients



Honor Roll, 2005-2006. On the local front, Muhlenberg College was presented with the 2006 Collegiate Award from the Miller Blood Center for its contributions to the blood bank of much-needed supply. ✂ Twenty percent – 425 students – engaged in approximately 20 hours of community service per semester in 2006-2007, with thousands of hours of service non-reported.

Standing left to right: Carey Heller '07, Carolyn Whitcomb '07, Corey Herman '07
Seated from left: Kristen Gialo '07 and Rachel Goldstein '07

Renovations of Shankweiler floors 1 and 2 completed for start of spring semester.

Award-winning author, Sue Miller, gives a public reading as part of the College’s Living Writers series.



Dance Director Karen Dearborn sets the stage on fire with the production of the Master Choreographers Concert featuring new and innovative dance pieces performed by a company of Muhlenberg dancers.



Admissions applications set new record: 4703.

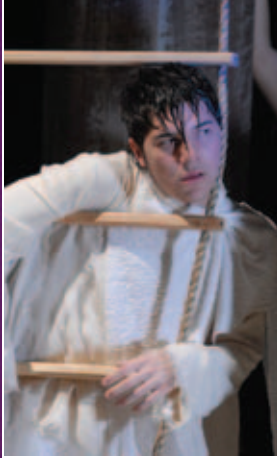
National Science Foundation awards Muhlenberg College \$370,000 over three years for a biology study on how genes control formation of organs.



TIMELAPSE WEBCAM

2201 Chew Street construction progress...
November 17, 2006





Corps, an original dance theatre work by Chris Shepard '07 was produced in March and April. Actor Chris Alvaro '07 (above) was part of the production, which bravely explored the cathartic power of the individual's quest for solace in the midst of global chaos.

2007 WAS A BANNER YEAR in the department of theatre and dance for intradepartmental collaboration. At Muhlenberg, dance and theatre are distinct programs housed in one department. Both programs are thriving; each is ranked by such publications as the Fiske Guide to Colleges among the preeminent undergraduate programs in its art form in the United States. Last year dance and theatre combined strengths in numerous interdisciplinary projects. The faculty adopted a joint mission statement that drives curricular and artistic planning for the entire department. A section of the mission statement addresses the quality of collaboration both programs seek: "Faculty, staff and students join together to create a spirited department characterized by trust, personal responsibility, healthy risk-taking and mutual respect." This daring impulse guided many initiatives. One prime example: the department produced a full-length dance-theatre work, *Corps*, written, directed and choreographed by Chris Shepard '07. This original work recalls the AIDS crisis among gay men in the 1980s through the prism of Samuel Taylor Coleridge's *The Rime of the Ancient Mariner*. *Corps* combined modern dance, post-modern theatre, Romantic literature and an original musical score by music and English double major Brian Kirchner '06. For Shepard, creating this piece was the ideal culmination of his liberal arts education, integrating ideas and tools from his major in theatre and his minors in dance and English. Several other projects also brought dance and theatre into productive contact. In the fall, Department Chair James Peck and Director of Dance Karen Dearborn worked together on *Urinetown: The Musical*. This satiric musical about consumer greed and environmental crisis proved a heyday for choreographer Dearborn; her

Kate Thompson '07 received top honors for choreography at American College Dance Festival in March 2007.



Theatre and Dance Collaborate

pastiche of Broadway musical dance styles outpaced the difficulty of the Broadway production, demanding technical precision and boundless comic chutzpah from the talented cast. In the spring, students from both programs attended a performance of Matthew Bourne's ballet *Edward Scissorhands* at the Brooklyn Academy of Music, providing bountiful opportunities for cross-disciplinary discussion. Later that semester, the dance program initiated a new tradition; senior dance majors capped their dance education by choreographing and performing solo pieces for the first annual Senior Solo Concert. Lights for the concert were designed by theatre design students enrolled in lighting design II, taught by Director of Design and Technical Theatre Curtis Dretsch. Peck and Dearborn agree that the synergy between the two programs makes the department truly exceptional. "We want to be recognized as the best department of theatre and dance in the United States," say Peck and Dearborn. "Housed together, working together and growing together, we are well on our way."



James Peck, Ph.D.
Associate Professor
Department Chair

Karen Dearborn
Professor
Director of Dance

The Year in Review

October 27 – November 5, 2006

Urinetown: The Musical

Musical by Greg Kotis and Mark Hollmann. Directed by James Peck. Choreographed by Karen Dearborn. Robert Wagner '07 as Caldwell B. Cladwell.

© Joe Edelman

November 16 – 18, 2006

Moving Stories

Choreography by Brandon M. Girouard '08. Soloist Samantha Jonson '09.

© Joe Edelman

November 29 – December 3, 2006

Life's A Dream

Play by Pedro Calderón de la Barca. Directed by Charles Richter. Fight choreography by Michael Chin. Joel Frank '07 and Ted Lytle '07.

© Joe Edelman

February 8 – 10, 2007

Master Choreographers

"Nuevo Tango" choreographed by Karen Dearborn. Shannen Curran '09 and Meghan Meehan '09.

© Joe Edelman

February 16, 2007

Ririe-Woodbury Dance Company

"Degrees of Separation" choreographed by Charlotte Boye-Christensen, Ririe-Woodbury Dance Company. Baker Artists in Residence (2007).

© Fred Hayes

February 22 – 25, 2007

Orpheus Descending

Play by Tennessee Williams. Directed by Francine Roussel. Scenic design by Tim Averill. Brian Byus '07 as Val Xavier and Ashley Wallace '07 as Carol Cuttrere.

© Joe Edelman

© Atom Kallen

April 26 – 29, 2007

Dance Emerge

Choreography by Heather Fox '08. Artistic Director, Charles O. Anderson.

April 26 – 29, 2007

Monkey in the Middle

Play by Brighde Mullins. Directed by Beth Schachter. Christa Wroblewski '09 as Darlene Scanlon.

© Joe Edelman

Box Office: 484-664-3333 www.muhsenberg.edu/depts/theatre

New residence hall at 22nd and Chew Streets completed – students move-in.

Sandella's eatery opens in Red Door Café in response to student lines in the GQ and Garden Room.



Martin Art Gallery opens **Emergent Behavior**, an exhibition developed by guest curator Amze Emmons, focused on 8 female artists working in non-traditional media.

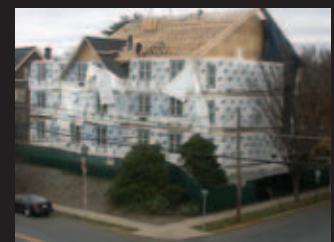
Kiplinger's Magazine names Muhlenberg #34 in 100 Most Affordable Private Liberal Arts Colleges.



Students learn Bubble-ology at Buchanan Elementary School Science Day.

TIMELAPSE WEBCAM

2201 Chew Street construction progress...
November 20, 2006



Freedom Matters

THE MUHLENBERG COLLEGE CENTER FOR ETHICS presented in 2007 the series "Freedom Matters," bringing programming about the history, limits and controversial components of freedom to campus. The series examined how freedom has been defined in different historical moments and viewed by different segments of society, especially examining those who have been denied certain freedoms or have had to fight hard to win them. It also raised questions about limitations on freedom and the values with which it is associated. Lead presenters for the series were the Honorable Judge Stewart Dalzell, historian Eric Foner, and New York University professor Mark Crispin Miller.



Mark Crispin Miller

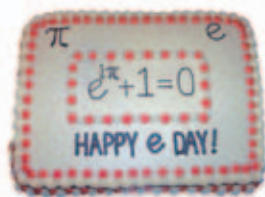
Judge Stewart Dalzell gave the speech, "Reconciling Conflicting Freedoms," about the many conflicting freedoms in the United States, and the need for an understanding and unification of these conflicts. Dalzell is a judge for the U.S. District Court for the Eastern District of Pennsylvania, appointed on September 16, 1991, who specializes in judging cases involving freedom of expression and freedom of religion. One of the country's most prominent historians, Eric Foner, the DeWitt Clinton Professor of History at Columbia University, also lectured on "The Story of American Freedom: 1776 – 2006." He spoke about how freedom has been both a universal aspiration and a highly contested ideal throughout American history. Foner was named Scholar of the Year by the New York Council for Humanities in 1995. He is the author of *The Story of American Freedom* (1998) as well as many other books. New York University professor Mark Crispin Miller spoke at an event titled, "Decline and Fall: The History of the Corporate Press Since Watergate." The lecture focused on issues surrounding the threat to the free exchange of information and ideas posed by the consolidation of media ownership. Miller is a professor of culture and communication at New York University, as well as a well-known critic of the Bush Administration, and author of *The Bush Dyslexicon*, 2001.

Koehler Professor Dunham + Leonhard Euler = A Winning Formula



William Dunham, Ph.D.

Truman Koehler Professor of Mathematics, William Dunham, has given new life to the great mathematician Leonhard Euler. Of Dunham's five books, his fourth "Euler: The Master of Us All" (1999) and his fifth "The Genius of Euler: Reflections on his Life and Work" (2007) have resurrected Euler's legacy as one of the greatest mathematicians on this his Tercentenary (300th birthday). In August 2006, Dunham received the Lester R. Ford Award for the best article published in a year in *American Mathematical Monthly* for "Touring the Calculus Gallery," which appeared in the publication in January 2005. The success of his writing has led to many speaking engagements over the years. This past year, he spoke at over 14 events, many of which were related to the Euler Tercentenary.



The department of mathematics and computer science celebrated the 300th birthday of Leonhard Euler (1707–1783), February 2007.



2007 Honorary Degree Recipients

Manhattan's Lower East Side. Judge John E. Jones III commenced his service as a United States District Judge on August 2, 2002. He is the 21st judge to sit in the Middle District of Pennsylvania. In 2006, Jones was the recipient of the first John Marshall Judicial Independence Award. Dr. Edmund Pellegrino is professor emeritus of medicine and medical ethics and adjunct professor of philosophy at Georgetown University. He has served in leadership roles in many universities and medical centers, as well as having authored or co-authored 24 books and more than 550 published articles. In 2004, Pellegrino was named to the International Bioethics Committee of the United Nations Education, Scientific and Cultural Organization (UNESCO). Since his retirement in 2000, he has remained at Georgetown. Writer and *Doodlesbury* cartoonist Garry Trudeau spoke at Muhlenberg College's 159th Commencement and was also awarded with a doctorate of humane letters. *Doodlesbury*, the comic strip, was launched in 1970, and now appears in nearly 1,400 daily and Sunday newspaper clients in the U.S. and abroad. In 1975, Trudeau became the first comic strip artist ever to be awarded a Pulitzer Prize.

Muhlenberg College awarded four doctoral degrees to Dr. Edmund Pellegrino and Ruth Abram (left), the Honorable Judge John Jones (right), and an honorary doctorate of humane letters to writer and cartoonist Garry Trudeau (second from right). In red, Muhlenberg board chair Richard Brueckner '71 and president Randy Helm (right).

FOUR OUTSTANDING INDIVIDUALS received honorary degrees at the May 20 Commencement. Ruth J. Abram is president of the Lower East Side Tenement Museum, which she founded in 1988. The Tenement Museum promotes "tolerance and historical perspective of the variety of immigrant and migrant experiences on

Faculty Awards

Fulbright Awards

Dr. Anne W. Esacove, research scientist in the department of sociology and anthropology

Dr. Tammy L. Lewis, associate professor of sociology and anthropology

Class of 1932 Research Professorship

Dr. Tammy L. Lewis, associate professor of sociology and anthropology

Certified Fraud Examiner

Dr. Paula L. Irwin, CPA, CFL, associate professor of accounting

The Donald B. Hoffman Research Fellowship

Dr. P. Alec Marsh, associate professor of English

Empie Award

Dr. Lora Taub-Pervizpour, associate professor, media and communication

Lindback Award for Distinguishing Teaching

Dr. Mohsin Hashim, associate professor, political science

Williams Award for Distinguishing Scholarship

Dr. Marten J. Edwards, assistant professor, biology



Anne W. Esacove



Tammy L. Lewis



Paula L. Irwin



P. Alec Marsh



Lora Taub-Pervizpour



Mohsin Hashim



Marten J. Edwards

Shankweiler renovations (floors 3 & 4), Trexler Tower and new bridge completed.

Acopian Ornithological Center completed.



Math professor William Dunham featured by the *Washington Post* regarding his research on Leonhard Euler, "the Mozart of Mathematics."



Leonhard Euler

Senior Year Experience Task Force completes its report.

Campus reviews emergency response protocols, implements alarm system and emergency text messaging system in wake of Virginia Tech tragedy.

Faculty approves new African-American studies minor.

TIMELAPSE WEBCAM

2201 Chew Street construction progress...
November 29, 2006





Biology major Beth Irwin '07 is now a Ph.D. student in chemical ecology at the Pennsylvania State University.

Natural Sciences Excel

MUHLENBERG COLLEGE CONTINUES to have a strong reputation in the sciences. The curriculum continues to expand, enabling the College to produce first-rate graduates across a wide range of science and health professions. Today, Muhlenberg's professors and instructors are able to offer an inquiry-based curriculum that prepares students as scientists and as humanists, giving them the critical thinking skills to understand scientific discovery and its social, ethical and political ramifications. Throughout this decade, the enrollment in science majors has remained steady at about 220 students. With the new science facility, the introduction of a new major in neuroscience and increased interest in environmental studies, the College plans to attract more students who want degrees from a liberal arts college ranked for offering one of the nation's leading undergraduate science programs.

With the assistance of grants from the National Science Foundation (NSF) and other foundations and agencies that fund undergraduate research, Muhlenberg has increased its use of student researchers, who gain invaluable experience for career growth. In 2006, NSF awarded \$370,000 over three years to the College to support the project "RUI: Genetic Analysis of the *C. elegans* Tailless Gene *nhr-67*." Overseen by associate professors of biology, Dr. Bruce C. Wightman and Dr. Elizabeth R. McCain, the study seeks to understand how individual genes control the formation of complex organs. Dr. Joseph Keane, assistant professor of chemistry, was awarded a \$40,000 grant by the American Chemical Society Petroleum Research Fund for clean energy studies. Dr. Brett Fadem, assistant professor of physics, and four students are representing Muhlenberg as one of two liberal arts schools in the nation studying the source of proton spin using the PHENIX detector. These are three examples of the significant projects granted to Muhlenberg's natural science division in 2007-2008. Natural science professors continue to speak and publish on topics critical to solving problems in areas such as environmental pollution, migration of invasive aquatic species, glass and related collisions of birds and ways to overcome first-year academic challenges for science students, to name a few. Students participate as part of the learning culture here.

Natural Science Majors

Biochemistry

Biology

Chemistry

Computer Science

Environmental Science

Mathematics

Natural Science

Neuroscience

Physical Science

Physics

Science Complex Completed

THIS PAST YEAR, the College proved once again its commitment to the sciences as it not only expanded space but provided a complete overhaul of existing science facilities. A new 45,285 square foot science building was completed in time for the opening in the fall of 2006 semester. The neighboring Shankweiler Science Building received a new face and a complete renovation. With the new Harry C. Trexler Tower and Bridge connecting both buildings, Muhlenberg now offers a complete science complex totaling over 148,000 square feet. Among the improvements are (1) the establishment of teaching and research neighborhoods for faculty and students; (2) the creation of new space conducive to interdisciplinary and collaborative efforts; (3) the creation of an overall science division identity with shared spaces including classrooms, gathering areas and reading rooms; (4) improved connectivity between the Shankweiler and Trumbower Buildings; (5) expanded space for chemistry; (6) an environmentally friendly design; and (7) the creation of a science complex that is attractive to current and prospective students.



The new science building is in the process of being LEED-certified as an environmentally green building. Key features that curb energy waste include:

- M Natural light and compact fluorescent bulbs
- M Flushless urinals
- M Paint and carpets that emit low levels of VOCs
- M Wind-generated power supplying half of the new building's electricity
- M Recycling bins

The architectural firm on the project was Ballinger Architects; construction was managed by Whiting-Turner Contracting Co. A team of Muhlenberg's science professors, operations personnel, trustees and James Steffy, consultant for capital projects, started in summer 2003 to do preliminary planning on this strategically important component of Muhlenberg's strong academic reputation. Project costs for the combined Sciences and Seegers Union projects, including construction, fees, technologies, furnishings and equipment totaled \$31,100,000.

TIMELAPSE WEBCAM

2201 Chew Street
construction progress...
December 11, 2006





Jane Hudak, M.Ed., Dean, The Wescoe School

New Dean Leads Wescoe

HAVING SERVED AS INTERIM DEAN SINCE SEPTEMBER 2006, Jane Hudak, M.Ed., was officially named Dean of the Wescoe School of Muhlenberg College in May 2007. She will lead the College's efforts in providing the community with relevant higher education programs that meet the needs of a changing Lehigh Valley.

In making the announcement, Muhlenberg College Provost Dr. Marjorie Hass said, "Ms. Hudak has a passion for adult education and a deep understanding of Muhlenberg's mission and The Wescoe School's history and possibilities. Our faculty and students have responded enthusiastically to her appointment." "As Dean, she will provide strategic leadership for the The Wescoe School. In collaboration with the Muhlenberg College faculty, she will ensure that the College continues to offer high quality adult education for the Lehigh Valley. She will also be instrumental in forming community and business partnerships," noted Dr. Hass.

Since 1998, Hudak has been involved with advising, admissions and career development at The Wescoe School. First hired as a part-time academic advisor, she was promoted to the position of associate dean in 2002. In 1991, Hudak received her bachelor's degree in political science from Kutztown University. After working in the field of healthcare administration, she continued her education at Kutztown and received a master's degree in higher education administration. She also worked for Warren County Community College, Northampton Community College, St. Luke's Hospital, the dean of student's office at Muhlenberg College, and the Office of Labor /Management Cooperation in the Department of Labor in Harrisburg.

www.muhlenberg.edu/wescoe

Promotion



SALLY HARKINS '07 HAS BEEN NAMED ASSISTANT DIRECTOR of accelerated programs at The Wescoe School. Harkins will oversee the quality and effectiveness of accelerated programs. Among her many duties, she will be the direct liaison between the program advisory boards and the key contact with students, faculty and mentors. Harkins first came to Muhlenberg College in 1996. Prior to joining The Wescoe School staff in December 2004, she worked in the public relations, academic life and registrar's offices.

We Complete Adult Students

AS THE DIVISION OF CONTINUING AND SUMMER STUDIES AT MUHLENBERG COLLEGE, The Wescoe School offers certificates, associate's and bachelor's degrees in more than 25 fields of study. It also offers a top-ranked teacher certification program for adult students living in the Lehigh Valley region. According to national statistics from 2004-05, 44 percent of all U.S. students are engaged in some form of continuing education. To address demand in the region, Wescoe is playing an increasingly important role in keeping the Lehigh Valley's employee workforce competitive. For more than 95 years, adults in the region have turned to Muhlenberg to take the next steps in fulfilling their career aspirations.



Graduation October 2006: Instructor and mentor, Nancy Miller, celebrating with graduates of the accelerated degree program.

New Places

LEHIGH VALLEY HOSPITAL (LVH), MUHLENBERG CAMPUS, BETHLEHEM, is the new site for the introduction of an accelerated program: the bachelor's of business administration degree with a concentration in healthcare management. The program starts in October 2007 with a cohort of 18 adults who will complete the 17-course units (classes) by August 2009. These 17 courses consist of 11 in business and six with specific content related to healthcare management. LVH is given first opportunity to fill ongoing cohorts. Course relevancy is the key to this program, which includes such topics as healthcare finance, marketing for healthcare and America's healthcare delivery system. Gregg Scully, Wescoe's assistant dean, was instrumental in the development of this program and serves as liaison with the hospital.



LVH, Muhlenberg Campus

New Concentrations

WESCOE CONTINUES TO ALTER ITS ACADEMIC OFFERINGS based on the educational needs of corporations and organizations in the region. Two new accelerated program concentrations were approved in 2006-07 academic year: a human resources leadership concentration within the bachelor's of business administration program and a learning and performance concentration within the bachelor's of human resources management program. With the emphasis on adaptable organizations, innovation, learning, knowledge workers and a potential skills shortage as baby boomers retire, the new concentrations prepare students in two key areas: the first is in the leadership required of the HR function to successfully help transform the entire organization. The second addresses the fact that learning is quickly becoming a core competence in many organizations, critically linked to the performance of the entire enterprise.



Endowment passes \$130 million mark, a new College record.



The women's golf team wins the Centennial Conference Championship.

Sarah Mitchell wins her fourth straight Centennial Conference javelin title.



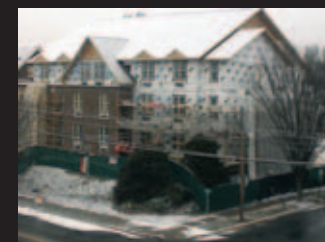
Consumer's Digest ranks Muhlenberg #6 nationally among best values in higher education.



Pulitzer-winning cartoonist Garry Trudeau delivers Commencement address.

TIMELAPSE WEBCAM

2201 Chew Street construction progress...
January 22, 2007





MATT LOESCH '07 (left, in red and grey) was the first Mule wrestler to earn Academic All-America honors. Loesch, who graduated with a double major in psychology and business administration, was named to the Academic All-District II team each of the last two years and is only the second athlete in Muhlenberg College history to be an All-American and an Academic All-American; the other was softball pitcher Elaine Gratrix '91.



Mules Football
Ready to break into the winner's circle in 2007

Mules Go Extra Mile for Community

MUHLENBERG ATHLETES ARE HARNESSING THEIR ENERGY OFF THE FIELDS AND COURTS and contributing time and energy to serve the community. The Mules have a long-standing tradition of taking time from classes and practice schedules to support the community. ✂ The Mule wrestling team has raised more than \$23,000 for the American Cancer Society through various fundraisers. Taking collections at football games and wrestling matches, holding events like the Bench Press-a-thon and taking pledges from 10 to 50 cents for every takedown during the regular season, the team was motivated throughout the season to help. ✂ The softball team was honored for its community service. ✂ The men's lacrosse, baseball and men's soccer teams participated in the Lehigh Valley Chapter of the Cops-N-Kids program by reading to first graders in the Allentown School District. Participants in the program worked to collect books that are donated and read at schools to promote literacy and foster an image of positive role models in children.

22



The Football vs. Field Hockey Charity Game

✂ The football team competed against both field hockey and volleyball teams. In a field hockey game, they raised money for the Fox Chase Cancer Center. ✂ The track team assisted with numerous Muhlenberg community service projects, including the monthly Jefferson Elementary School visits by Allentown students to the campus. The basketball team united with Jefferson Elementary School as part of the National Association of Basketball Coaches Dream to Read Program, assisting in this national literacy movement. ✂ Women's lacrosse held a car wash and also participated in a 5k run for Turning Point of the Lehigh Valley. Members of all the women's teams participated in National Girls and Women in Sports Day.

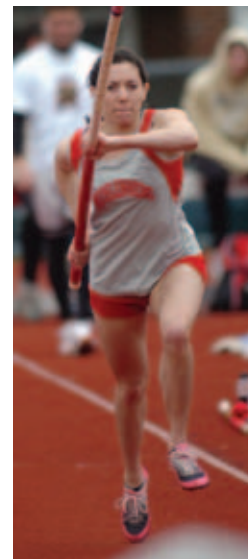
Mules Shine, Teams Work on Winning

MULE SPORTS TEAMS IN 2006-2007 PULLED AHEAD in several sports categories, but the year overall was a rebuilding period for many of them. The men's cross country team earned its first berth to the NCAA Championships. Of the 96 Division III schools that sponsor wrestling, the Mules were one of five programs to produce four conference champions qualifying for the NCAA Championships. After 13 years, the Muhlenberg field hockey team won a post-season victory, defeating five-time conference champion Gettysburg College. The men's basketball team followed an eight-game losing streak with a five-game run of wins to qualify for the playoffs. The women's basketball team stampeded into the 19th spot of the Division III national rankings early in the season with an 11-0 start, including the 100th career win for Coach Ron Rohn. The women's golf team won the Mules' lone Centennial Conference Championship of 2006-2007, defeating five-time defending champ McDaniel College by 30 strokes. Sarah Mitchell '07 was named outstanding performer for field events at the Centennial Conference Championships after winning the javelin and Alex Faust '10 received the same honor for winning the pole vault, breaking four school records along the way.

Team Wins for the record*

.731	women's basketball	19-7
.684	women's soccer	13-6
.632	field hockey	12-7
.625	men's soccer	8-4-4
.591	wrestling	6-4-1
.563	women's lacrosse	9-7
.500	football	5-5
.500	men's lacrosse	5-5
.417	men's tennis	5-7
.400	men's basketball	10-15
.400	volleyball	10-15
.357	women's tennis	5-9
.281	softball	9-23
.265	baseball	9-25

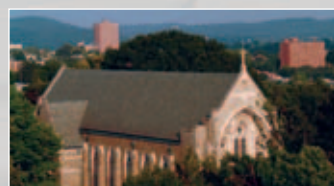
*cross country, golf and track not calculated as team percentages



Alex Faust '10
Centennial
Conference Champion
for pole vault

The Board of Associates holds its annual spring dinner with 13 new members introduced and 5 students recognized with Community Service Awards.

Former Interim President and Special Projects consultant Jim Steffy retires from Muhlenberg (for the third time!)



Board retreat to discuss "What it means to be a church-related college."



A new Village springs up in the place where MacGregor Village once stood on the hill overlooking Lake Muhlenberg.



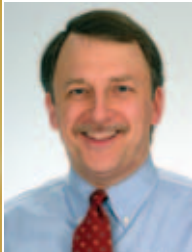
Muhlenberg College Guide to Sustainable Living is published. This is a project of the environmental communication class, EnAct and the President's Greening Committee.

TIMELAPSE WEBCAM

2201 Chew Street construction progress...
February 1, 2007



Select Company



Chris Hooker-Haring '72
Dean of Admission
and Financial Aid

WHAT A DIFFERENCE A YEAR CAN MAKE. A year ago, admissions was dealing with the impact of a too-large incoming class. An upward spike in regular decision yield suddenly left the College needing to find ways to house, feed and provide courses for 615 incoming students rather than the targeted 575. Quick work by Muhlenberg's housing staff, the registrar, provost, and food services allowed the College to manage the situation appropriately, and that first-year class had a good year despite its size (93 percent are returning for the sophomore year). To accommodate growing classes, the College built a new residence hall at 22nd and Chew Streets. This new residence is joined this fall by five additional new residences where MacGregor Village used to stand. (Please see page 35 to learn more). These are popular additions

to 'Berg's variety of housing alternatives. Add to these "new spaces" a new science building. Opened last fall – over 40,000 square feet of new, state-of-the-art science space that, in combination with renovated spaces in Shankweiler and Trumbower, provides a modern science facility that stretches farther than a football field. Muhlenberg's first-rate programs in the sciences and mathematics are finally matched by a facility of equal quality. This year's entering class is not too large and not too small. It numbers 551 – just one student over a target designed to move total enrollment back in the direction of the 2,150 ceiling mandated by the Board and the College's strategic plan. In addition to enrollment being on target, the incoming class displays strong combined SAT scores, and more students rank in the top tenth of their high school classes. Applications increased again, as this class was selected from 4,703 applicants – another record. The College's acceptance rate moved from 44 percent a year ago to 37 percent this year. Yield on offers of admission held steady at 32 percent. Multicultural students make up 8.2 percent of the entering class – down from 9.1 percent a year ago, but up from 6.6 percent two years ago. It is clear that the College's attractive and modern new spaces are helping to attract bright, motivated, energetic new faces. For the second year in a row, biology ranks as the number one intended major for incoming students at the point of admission. It appears that chemistry enrollment also has the potential to grow. The new science building is clearly having an impact. Students and parents also comment positively on the new spaces in Seegers Union, as well as the new residence hall options.

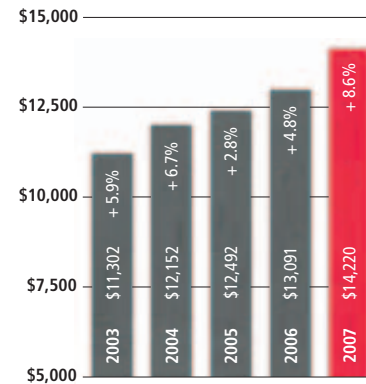
Last year's class was not only large, they were incredibly active and energetic. Their high level of involvement and engagement, from academics to performing arts, and from athletics to community service, is an important component of life at Muhlenberg.



Muhlenberg's 159th Commencement was held May 20, 2007, where 563 students received diplomas. Seen here are Bruno Wu '07 and Gillian Visco '07.

Select Data

Institutional Financial Aid: Average Grant per Aided Student



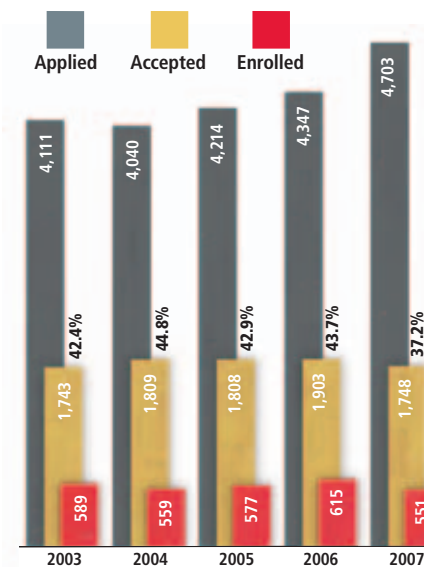
Muhlenberg provides financial aid so that talented students with a willingness to work and learn have access to a Muhlenberg education. Approximately 65 percent of students receive financial aid, scholarships and/or grants from the College's resources.

Student Charges at Comparable Colleges 2006-2007



Parents may find this information relevant to making decisions about how the quality of a college education is directly related to the economic acumen of the institution.

Selective Admissions Criteria



Six-Year Graduation Rate

All US Baccalaureate Degree Institutions

1999-2005 54.9%

Muhlenberg College

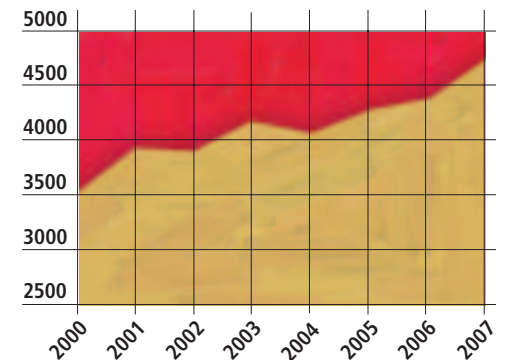
1999-2005 85.5%

Source: Integrated Postsecondary Education Data System 1999-2005

Note: The four-year graduation rate for Muhlenberg College in 2007 was 78.8 percent.

Application Growth

Applications (Fall of Entering Year)



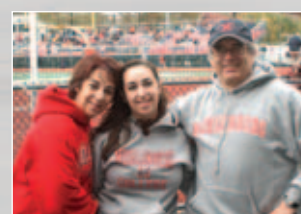
Snow Day at Muhlenberg

Martin Art Gallery unveils the abstract painting and printmaking of regional artist, Norman Sarachek.



New science building, Trexler Tower and Bridge dedicated.

Beth Halpern appointed new director of community service and civic engagement and Kate Cartwright is named assistant director.



Parent Giving tops 75% participation.

New positions approved for Art, Music, Biology.

TIMELAPSE WEBCAM

2201 Chew Street construction progress...
March 12, 2007



Capital: Investing in the Future



MUHLENBERG TRUSTEES, along with more than 250 science alumni, faculty, staff and students, gathered on June 14, 2007, for the opening of the College's new science building. The event included an unveiling of the Harry C. Trexler Tower by President Randy Helm and Trexler Trustee Malcolm Gross '62, P'94, P'02; a ribbon-cutting ceremony at the south entrance; and tours of the renovated Shankweiler Building, featuring faculty/student research demonstrations and named spaces provided through the generosity of alumni, friends and the College's government and foundation partners. Highlighting the tours was the Acopian Center for Ornithology, made possible through a gift from the late philanthropist, Sarkis Acopian. Muhlenberg is grateful to alumni and friends who funded classrooms, laboratories and other spaces in the building including Jerry '80, P'11 and



Tilghman H. Moyer IV
Vice President
Development and
Alumni Relations

Carol Galgano P'11 who, along with Jim '78, P'08 and Cheryl (Frenzel) Galgano '78, P'08 named the Molecular Biology and Biochemistry Collaborative Core Facility in memory of Angelo Galgano to honor his devotion as a father and grandfather. Two grandchildren, Brian '08 and Kristen '11, are currently Muhlenberg students. The Galgano family has expressed its pleasure in being able to help support the growth of Muhlenberg College, an institution that "has been an important part of our lives for many years."



Left to right: Marie Galgano P'78, Cheryl (Frenzel) Galgano '78, P'08, Jim Galgano '78, P'08, at the unveiling of the Molecular Biology and Biochemistry Collaborative Core Facility made possible through a gift in memory of Jim's father, Angelo Galgano.

Alumni Achievement: Honoring Loyalty

EVERY YEAR, the Muhlenberg College Alumni Association honors individuals whose lives reflect dedicated service to the College and the Alumni Association. The awards were presented at the Alumni Achievement Awards Luncheon during Reunion Weekend, Saturday June 2, 2007.



2007 Alumni Achievement Award Winners (left to right): Anne Davis, Service to the College by a Friend; Carl Schnee '57, Alumni Lifetime Achievement; Ken Friedman '57, Alumni Service to the College; Harvey Stein '57, Alumni Lifetime Achievement; David Garbe '98, Outstanding Young Alumnus; and Eileen (Collins) Neri '87, Alumni Leadership

Academic Resource Center

Each year, hundreds of students utilize the Academic Resource Center for assistance in navigating the rigors of a Muhlenberg education. In 2006, Muhlenberg expanded and enhanced the Center to strengthen the College's academic support services, disability services and award-winning peer tutoring program. A \$25,000 gift from the Morrow Foundation allowed the Academic Resource Center to renovate its learning specialist's office, and provided program funding for the "Learning Assistants in the Classroom" program. "This Center continues to demonstrate proven success in improving student academic engagement and outcomes," says Melissa Morrow '02. "We are thrilled to be involved with the Center's dynamic team of students and staff."



Left to right: Zachary Weiss '05, Nancy Atiyeh '05 and Melissa Morrow '02 in 2005 at a recognition event in honor of the Morrow Foundation's gift to the Academic Resource Center's note-taking program.



Left to right: Chairman of the Board, Richard Brueckner '71, P'04, P'09, President Randy Helm, biology chair Dr. Richard Neisenbaum, chemistry professor Dr. Bruce Anderson and Dr. Arthur Altman '53, P'84 cut the ribbon to officially open the new science building in June 2007.



In October 2006, President and Mrs. Helm (second from right) met alumni and students studying abroad at the Tower of London. Trustee Susan (Kienzle) Pobjoy '73, the regional alumni contact for London, is far right.

Alumni Relations: Reaching Out

Two New Regions Added to Alumni Outreach Program: London & Las Vegas

October 2006 brought President Helm and the office of alumni relations to England for an alumni/student reception at the Tower of London. Participants enjoyed a special invitation to tour the Tower after hours, a rare opportunity arranged by Lara Muth '97. Trustee Susan (Kienzle) Pobjoy '73, the regional alumni contact for London, assisted with the fall event and hosted an additional alumni event in London in the spring. President Helm plans to make the London trip an annual event for alumni and Muhlenberg students studying abroad. ✂ In March 2007, the office of alumni relations teamed up with Muhlenberg's

Theory and Art of Magic program to create a Las Vegas installment of its award-winning educational program on the magical arts. Both alumni and students enjoyed classes with Dr. Lawrence Hass, professor of philosophy and director of the Theory and Art of Magic program, as well as private conversations with world-leading stars of magic, including Teller (of Penn & Teller), Lance Burton, Mac King and others.



New Regional Alumni Contact Program

With Muhlenberg alumni scattered throughout the world, a priority of the office of alumni relations and the College's regional clubs is to deliver 'Berg events to those who can't get back to campus easily or frequently. ✂ To reach areas with smaller alumni populations, or where no formal alumni club has been established, Randi Schweriner '87 has assumed a new volunteer position to oversee the regional contact program first created by Brian Fishbone '98 and Lauren (Greber) Shanahan '87. The program recruits regional alumni volunteers to assist with planning and implementing occasional events. ✂ "The regional contact program is a wonderful medium for linking alumni who might otherwise never get to meet while providing a resource for both young and "seasoned" alums who are new to a city," says Randi. "It's always nice to talk with someone with whom you have had a shared experience, whether it is to get a restaurant recommendation, network for a job or seek out a friendship." Thanks to Schweriner's efforts, new regional alumni designees have been found for California, Florida, Indiana and Nevada, adding to existing contacts in Connecticut, Georgia, Maryland, New York, Pennsylvania, Tennessee, Paris and London.

The Muhlenberg Fund: Setting Records

2007 Senior Class Connections Campaign Tops 2006

Participation in the Class of 2007's Senior Class Connections Campaign (SCCC) reached 44.6% this year – a 6.2% increase over the Class of 2006's campaign. Not only that, seniors raised \$7,493.62 – \$1,194.39 more than last year's class. ✂ "Class agents working for the SCCC did a phenomenal job," says Christi Razzi '07, the new assistant director of The Muhlenberg Fund, who served as SCCC gift chair. "We tried to reach out to every student from the Class of 2007 to help them reflect on their time at Muhlenberg. We hope that every new alumnus will stay *connected* to 'Berg through the online community, stay *involved* through regional club membership and stay *committed* through annual support of the Muhlenberg Fund."



Members of the 2007 Senior Class Connections Campaign (SCCC) Executive Council: Back Row (l to r) Rory Rosenwald, Christi Razzi, Elizabeth Klein, Erica Smith; Front Row: Lindsay Galvin

Parents Council Announces New Co-Chairs

The Muhlenberg College Parents Council is pleased to announce the appointments of Laura Berton Grau P'09 and William E. Grau P'09, parents of junior Christopher Grau, as the new co-chairs of Parents Council. Established in 1992, the Parents Council was created to forge a partnership between parents and the College for the benefit of Muhlenberg students. Each year, the president invites a select number of parents to serve a one-year renewable term. ✂ "Muhlenberg College impressed us from the very beginning as a school that puts the needs of its students first," say the Graus. "From the faculty to the administration to the students, this is truly a caring community. We joined the Parents Council to lend our support to the College as it focuses not just on educating young men and women but also on preparing them for adulthood." ✂ Parent support at Muhlenberg continues to be strong. In fiscal year 2006-2007, 75.6% of parents made a gift to The Muhlenberg Fund and raised \$222,804.87, a 14.7% increase over the previous year.

2006-2007 Annual Giving to the Muhlenberg Fund

103.4%

The Muhlenberg Fund exceeded its goal of \$1.8 million, ending the fiscal year at \$1,860,773.42 – **103.4%** of goal and an 8.4% increase over last year.

61%

Members of the Henry Melchior Muhlenberg Society (HMMS), Muhlenberg's leadership gift society, contributed \$1,138,964 to The Muhlenberg Fund, which represents **61%** of the dollars raised.

30%

The Class of 2002 doubled its participation rate, from 15% in fiscal year 2005-2006 to **30%** in fiscal year 2006-2007.

14.7%

More than 75% of parents made a gift to the Muhlenberg Fund, raising \$222,805, a **14.7%** increase over the previous year.

10.2%

Alumni gifts to The Muhlenberg Fund increased **10.2%**.

Endowment: Faces of Philanthropy

The Helene and Leonard '57 Bocclair Scholarship

Endowed scholarships ensure that Muhlenberg attracts top students regardless of their financial situation. Long-time leadership supporters of the College, Leonard Bocclair '57 and his wife, Helene, established The Helene and Leonard '57 Bocclair Scholarship this year to provide funds to a highly motivated student with a strong work ethic. ✍ Currently, more than 60 percent of Muhlenberg's students receive some sort of financial aid. For many of these students, a scholarship isn't a luxury; it's a necessity. "We are pleased to support scholarships at Muhlenberg," say the Bocclairs. "We want to give support to motivated and financially-deserving students and give them the opportunity to experience the high-caliber education offered by Muhlenberg."



The Helene and Leonard '57 Bocclair Scholarship
Leonard '57 and Helene Bocclair at the Class of 1957 & Heritage Presidential Reception during Reunion 2007.

The Daniel J. and Carol Shiner Wilson Grant for the Completion of Scholarly Projects

Endowed support is crucial to attracting and retaining top-notch faculty at Muhlenberg. To support faculty research and professional development, Dr. Daniel Wilson, professor of history, and Dr. Carol Shiner Wilson, dean of the College for Academic Life and assistant professor of humanities, established the Daniel J. and Carol Shiner Wilson Grant for the Completion of Scholarly Projects. The grant is intended to assist faculty members in the completion of significant work of scholarship or comparable professional activity by funding items such as page charges for publication, reproduction rights for illustrations, indexing charges and other incidental expenses that can appear just as a scholarly project nears completion. ✍ The Wilsons, who are longtime contributors to Muhlenberg at a leadership level, believe that faculty support benefits the College as a whole. "At Muhlenberg, we are fortunate to have faculty who are both outstanding teachers and exceptional scholars," say the Wilsons. "Their scholarly activity enriches their teaching and creates an atmosphere of sustained, engaged learning that inspires our students to become engaged learners as well."

Executive Council Becomes Alumni Board: Key Achievements

- The year has seen a new group of deserving individuals – and even a team – inducted into the Athletic Hall of Fame. In fact, this year the Alumni Trust Fund expanded the size of the Hall of Fame space to continue to honor deserving athletes for years to come. The dedication of Alumni Court this year was also a defining moment for the Association, as well as a true mark of how important the growth of the Alumni Trust Fund is to continued success.
- The career services committee has worked diligently to support the College's efforts to provide diverse opportunities for undergraduates throughout the year.
- The board amended the Association's Constitution and adopted a formal set of by-laws.
- The nominating committee provided a slate of officers and general members to start terms on July 1, 2007. Louis Lessig '93, president; Bob Buzzard '62, president-elect; Jennifer Tran '93, treasurer; and Eileen Collins Neri '87, secretary. Members whose terms expired on the board: Liza Bertini '93, Keith Bildstein '72 and Rob Richard '74.

Advancement: Financial Highlights

Corporate, Foundations and Government Relations

2006-2007

■ Commonwealth of Pennsylvania

\$500,000

Science complex

■ Century Fund

\$350,000

Science complex

■ Governor's Academy for Urban Education

\$236,605

Provide teacher in-service training in core subjects

■ Andrew W. Mellon Foundation

\$ 75,000

Diversity curriculum and faculty development

■ Fowler Family Foundation

\$ 75,000

Programs supporting multicultural students and outreach

■ Spencer Foundation

\$ 50,000

Psychology research

■ Anonymous Gift

\$ 50,000

Science complex

■ Posen Foundation

\$ 40,000

New courses supporting secular Jewish Studies

■ The Rider-Pool Foundation

\$ 20,000

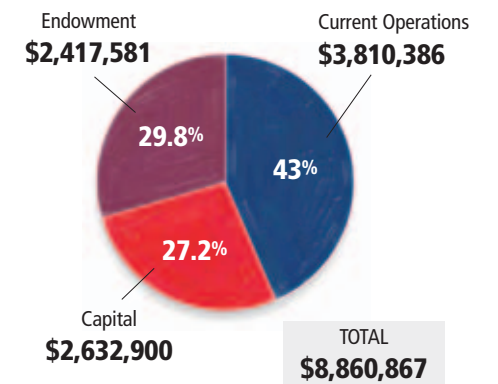
Science complex

■ Pa. Department of Conservation and Natural Resources

\$ 15,000

Arboretum trees

Major Areas of Support



Gifts made for current operational support help to fund financial aid grants, program and department support, technology and faculty. A portion of the interest earned on endowment – totaling \$905,859 on June 30, 2007 – supports scholarships and lectures. Capital gifts support the College's "bricks and mortar" projects.

Constituent Giving

	Dollars	%
ALUMNI		
Gifts	\$2,143,811	24.2%
Bequests	\$1,455,070	16.5%
Trustee Gifts	\$570,454	6.4%
Total Alumni	\$4,169,335	47.1%

PARENTS		
Gifts	\$639,552	7.3%
Bequests	\$50,992	0.6%
Trustee Gifts	\$31,020	0.3%
Total Parents	\$721,564	8.2%

FRIENDS		
Gifts	\$1,885,999	21.3%
Bequests	\$43,924	0.5%
Trustee Gifts	\$122,370	1.4%
Total Friends	\$2,052,293	23.2%

Foundations	\$649,623	7.4%
Corporations	\$348,345	4.0%
Government	\$845,887	9.6%
Ecclesiastical	\$73,820	0.5%
TOTAL	\$8,860,867	100.0%

Stay in touch, give online, keep track, click on:
www.MyMuhlenberg.com.



You've got that baby face. Among the new faces at Muhlenberg were those born to faculty and staff members in 2006-2007. From left to right are: Aaron Bova and his son, Emory Michael Bova; Christine Ingersoll and her son, Hayden Matthew Fermier; Kellie Provost-Brown and her daughter, Caroline Grace Brown; Corey Goff and his son, Michael John Goff; Marten Edwards and his daughter, Anna Marie Edwards.

Community Relations Report

PREPARING FOR LIVES OF LEADERSHIP AND SERVICE, Muhlenberg students have plenty of opportunities to serve the community. Over 425 Muhlenberg students were involved in service during the last year, raising thousands of dollars for various local, national and international organizations. Students also helped low income residents with their income taxes, helping them save more than \$1 million. The community service provided by Muhlenberg students, staff and faculty is an important element in the town-gown relations that continue to improve.

Highlights

- M** Eleven young Allentown girls from the Boys and Girls Club of Allentown were aided by Muhlenberg's department of media and communication in a program named DocWorks, where they created short documentary films about careers of local professionals.
- M** The department of media and communication also partnered with Congregations United for Neighborhood Action to have youth discover digital media while documenting community issues they care most about.
- M** The Allentown Economic Development Corporation formed a corporate alliance with the Wescoe School to offer training and educational modules to firms in the Bridgeworks Enterprise Center.
- M** Public relations vice president, Michael Bruckner, was named to the executive committee of the board of directors of Communities in Schools of the Lehigh Valley.
- M** Jefferson Field Day was held once again in May, and hundreds of Allentown School District children spent the day with Muhlenberg students on campus, participating in many social activities.
- M** The West End Theatre District continues to highlight an exciting, vibrant and improving retail and residential area. The College is working with residents and merchants to enhance the streetscape and aesthetics of this area, which is just blocks from the Muhlenberg campus. The College has supported the effort and helped publish a retail map and produce three street festivals and the 19th Street Film Forum.

Kiplinger's

"Ranked #34 nationally"
One of eight Pennsylvania private colleges listed as a best value



Consumer Digest

June 2007 Issue
"The #6 best value in private liberal arts colleges in the nation"

Student Horizons
www.studenthorizons.com

"One of 86 Colleges of Distinction"
Based on the College's 2005-2006 inclusion on the President's Higher Education Community Service Honor Roll

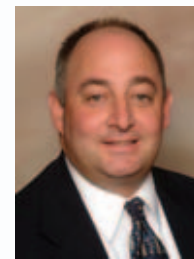
Articulating Image

MUHLENBERG IS A PRIVATE COLLEGE, yet extremely committed to public service. The College is a Lutheran institution, yet it enjoys tremendous religious diversity. It is a liberal arts undergraduate college, yet offers to the Lehigh Valley one of the oldest adult education programs in the region. Since perception is accepted as reality, the College works diligently to portray accurately the accomplishments of its students, faculty, staff and athletic teams. Over the past year, the effort to put forth news stories, interviews and other forms of publicity was driven by both the positive and relevant tie-ins related to news of the day, and by more challenging crisis communication in a transparent world where media

seeks rapid, if not immediate, response.

The College enjoyed significant media coverage in local, regional and national publications, including television, radio, newspapers and magazines. Faculty continue to be quoted as expert resources, and Muhlenberg academic programs continue to gain national recognition. College communications outlets such as *Muhlenberg Magazine* and the College website keep students and alumni informed.

Internal communication was enhanced with the introduction of the 'Berg Bulletin, a daily email newsletter for faculty and staff, found on the campus intranet. It includes notes of distinction, calendar of events, job postings and general campus announcements. Extensions of the College community are found through the efforts of WMUH, the College's venerable radio station, almost 60 years old, and through organizations such as the Board of Associates and the Woman's Auxiliary. Major events are coordinated through this office, including commencement. The PR team at Muhlenberg is seasoned, dedicated and ever-vigilant as it goes about ensuring that the right message is being distributed to the right audiences – for effective results.



Michael Bruckner
 Vice President
 Public Relations

National Stories 2006-2007

- Associate professor, psychology, Jeff Rudski, Ph.D., on the fascination with Harry Potter
- Koehler math professor, William Dunham, Ph.D., on 300th anniversary of mathematical genius Leonhard Euler
- Associate professor, political science, Christopher Borick, Ph.D., citing results and insights on political research conducted by the College's Institute of Public Opinion
- Cartoonist Garry Trudeau speaking at Commencement
- Philadelphia Inquirer op-eds written by dean of Admission, Christopher Hooker-Haring, assistant professor Jeff Pooley, Ph.D., and President Randy Helm, Ph.D.



The Washington Times

THE CHRONICLE
 of Higher Education

Health & Science
 Seedy sex lives of the plant world

THE BUFFALO NEWS

Fill it up – with vegetable oil

Big names pump up graduation

Philadelphia Inquirer
 U.S. colleges need complexity



Kent A. Dyer
Chief Business
Officer and Treasurer

On Track

ON THE FINANCIAL FRONT, a new bond issue in the amount of \$8 million was floated to assist in financing the replacement of MacGregor Village with the new Village. The endowment fund hit an all time high and ended the fiscal year at \$135,425,000, an increase of \$21,225,000 over last year. The College remains on solid financial footing as evidenced by Moody's recent A1 bond rating and Standard & Poor's A+ bond rating.

Endowment Growth 1997–2007



Statement of Activities & Changes in Unrestricted Net Assets

	2007	2006	2005
Revenues			
Tuition and fees	\$ 69,993,650	\$ 63,887,239	\$ 59,013,656
Less: College funded scholarships	(20,841,615)	(19,292,050)	(17,325,521)
Net tuition and fees	49,152,035	44,595,189	41,688,135
Private gifts, bequests and grants	2,407,391	3,387,688	3,346,262
Endowment and other investment income	3,049,992	1,776,934	3,154,024
Endowment gains (losses) & gains from spending policy	11,238,037	4,605,436	2,584,125
Auxiliary enterprises	16,840,298	15,756,268	15,400,342
Other sources	3,642,299	4,070,384	463,122
	86,330,052	74,191,899	66,636,010
Net assets released from restrictions	12,794,372	4,406,766	3,795,464
Total Revenues	99,124,424	78,598,665	70,431,474
Expenses			
Instruction and research	30,997,337	30,406,996	28,307,022
The Wescoe School	1,752,677	1,797,266	1,827,670
Library	2,622,684	2,488,766	2,174,226
Student services	7,324,540	6,691,746	6,583,350
General administration	5,487,728	5,021,457	4,633,474
General institution and other expenses	7,045,020	6,134,391	5,228,034
Depreciation	5,290,780	5,177,934	5,624,380
Auxiliary enterprises	10,131,840	9,586,380	9,579,154
Total Expenses	70,652,606	67,304,936	63,957,310
Changes in Unrestricted Net Assets	28,471,818	11,293,729	6,474,164
Changes in Temporarily Restricted Net Assets			
Private gifts, bequests and grants	2,606,941	7,237,000	4,454,685
Endowment income	1,298,525	878,585	642,467
Endowment gains (losses)	6,723,055	4,668,620	3,078,825
Other sources	1,226,596	2,282,975	924,264
	(12,794,372)	(4,406,766)	(3,795,464)
Increase (Decrease) in Temporarily Restricted Net Assets	(939,255)	10,660,414	5,304,777
Changes in Permanently Restricted Net Assets			
Private gifts, bequests and grants	2,378,864	1,759,533	1,985,813
Endowment income	37,783	28,259	17,014
Net change in beneficial interest in perpetual trusts	733,254	509,826	445,524
Depreciation	(2,500)	(2,500)	(2,500)
Increase (Decrease) in Permanently Restricted Net Assets	3,147,401	2,295,118	2,445,851
Increase (Decrease) in Net Assets	30,679,964	24,249,261	14,224,792
Net Assets			
Beginning of year	261,482,472	237,233,211	223,008,419
End of year	292,162,436	261,482,472	237,233,211

34



The Village

LIVING ON-CAMPUS AT MUHLENBERG JUST KEEPS GETTING BETTER AND BETTER. A house at 2252 Chew Street was acquired and promptly renovated to create a Multicultural House. This facility houses the offices of multicultural affairs and international programs plus a seminar room and social space for students. Down the street at 22nd and Chew Streets a 48-bed residence hall was created to bring more students back to campus. This three-story structure provides 12 apartments with each apartment providing two double bedrooms, full kitchen, bathroom and living/dining space. A full basement exists for student social space. Finally, before the year ended, old MacGregor Village was demolished just after Commencement was celebrated. Shortly thereafter, staff welcomed many new high-quality modular units as a huge crane swung them into place. The new "Village" consists of five buildings, each housing 29 students in apartment-style units, for a total of 145 beds. All units have kitchens, bathrooms and living/dining space.

Fiscal Year 2006-2007 Balance Sheet

	2007	2006	2005
Assets			
Cash and cash equivalents	\$ 14,605,844	\$ 14,232,955	\$ 7,955,076
Short-term investments	18,869,372	15,342,994	13,698,841
Contributions receivable - current	1,831,930	2,302,598	1,677,228
Accounts receivable and other current assets	2,518,959	2,117,433	2,700,394
Long-term investments	161,581,667	138,025,919	122,536,442
Contributions receivable	4,887,614	6,301,044	7,354,167
Land, buildings and equipment - net	145,358,825	123,516,028	108,577,495
Beneficial interest in perpetual trusts	9,367,847	8,634,593	8,124,767
Funds held by trustee and other assets	10,263,002	21,027,638	31,441,195
Total Assets	369,285,060	331,501,202	304,065,605
Liabilities			
Accounts payable	7,311,930	6,644,547	4,913,815
Deferred income and student credit balances	4,738,609	4,227,939	3,231,979
Bonds payable	59,370,000	53,385,000	54,470,000
Other liabilities	5,702,085	5,761,244	4,216,600
Total Liabilities	77,122,624	70,018,730	66,832,394
Net Assets			
Unrestricted	194,912,783	166,440,965	155,147,236
Temporarily restricted	49,327,024	50,266,279	39,605,865
Permanently restricted	47,922,629	44,775,228	42,480,110
Total Net Assets	292,162,436	261,482,472	237,233,211
Total Liabilities and Net Assets	\$369,285,060	\$331,501,202	\$304,065,605

35



Mr. Richard Brueckner '71, P'04, P'09
Board Chair

Trustees

- Mr. Alexander M. Adelson '56
- Mr. John W. Blend III '68
- Ms. Tammy L. Bormann '83
- Paul C. Brucker, M.D. '53
- Mr. Richard Brueckner '71, P'04, P'09
Board Chair
- Rev. Claire S. Burkat
- Dr. Cecilia A. Conrad
- Mr. Richard C. Crist '77, P'05, P'09
- Mr. Edward Davis '60
- Alan DeCherney, M.D. '63
- Ms. Susan C. Eisenhower '77
- Ms. Beth Evans '92
- Dr. Lona M. Farr '62, P'94
- Mr. Greg Fox '76
- Ms. Marion Glick '82
- Dr. Peyton R. Helm, President
- Mr. Bruce G. Kilroy '71
- Rev. Wilma Kucharek
- Ms. Melanie Mason '83
- Mr. John W. McConomy '71, P'99
- Mr. Thomas W. Mendham '63, P'91
- Mr. William Miers '49
- Mr. Mark J. Paris '80
- Ms. Susan Pobjoy '73
- Mr. Jeffrey Porphy '89
- Rev. Dr. John H. Reumann '47
- Mr. Richard Romeo '79
- Dr. John B. Rosenberg '63
- Mr. Joseph B. Scheller
- Mr. Paul Silverman '78
- Mr. James A. Skidmore, Jr. '54
- Rev. David R. Strobel
- Mr. Paul Vikner '72
- Ms. Karen Wagoner '71
- Mr. Robert C. Wood

Life Trustees

- Mrs. Dorothy H. Baker
- Mr. H. Warren Dimmig '42
- Mr. Lawrence A. Greene, Jr.
- Mr. Wayne R. Keck '44, P'67
- Mr. Robert Klein
- Rev. Dr. Robert J. Marshall
- Mr. Edward H. Robertson '42
- Mr. Donald T. Shire P'90
- Rev. Dr. Harold Weiss '52
- Mr. Walter Weller, Jr. '44

Associate Trustees

- Ms. Cynthia Boehlke '84
- Mr. Adam Brodsky '95
- Mr. Stuart Freiman '75
- Mr. N. Dante LaRocca '78
- Mr. Ken Rogers '85
- Mr. David Silber '98
- Mr. Robert Snider '80
- Ms. Joan Triano '81

Board of Observers

- Karen Hamm Antman, M.D. '70
- Glenn Ault, M.D. '87
- Dr. Frank Baldino '75
- Mr. Richard H. Ben-Veniste '64
- Mr. Eric Berg '78
- Mr. Timothy Birch '80
- Mr. Richard Blank '86
- Mr. Kim Bleimann NG '71
- Lance R. Bruck, M.D. '89
- Ms. Linda Cenci '75, P'05
- Mr. Martin Cohen
- Ms. Jacqueline Copeland '69
- Ms. Barbara F. Crossette '61
- Mr. William P. Douglass '59
- Mr. David J. M. Erskin '68
- Dr. Wilson Gum '61
- Ms. Julie Pfanstiehl Hamre '72
- Nancy Hutton, M.D. '75
- Ms. Sandra Jaffee P'04
- Mr. David K. Kaugher '66
- Mr. Jeffrey D. Koehler '79
- Carl A. Lam, M.D. '59
- Carey Marder, M.D. '68, P'06
- Mr. Mitchell Possinger '77
- Lucy J. Puryear, M.D. '81
- Mr. James H. Robbins '52
- Ms. Maria Rodale '85
- Ms. Holly Sarian P'08
- Mr. Arthur Scavone '61
- Mr. Steven Starker '87
- Mr. Harvey Stein '57
- Mr. Michael Stein '73
- Ms. Sarah M. Stegemoeller '75
- Mr. Sam Stovall '77
- Ms. Donna Bradley Tyson '78
- Mr. Taras Zawarski '76

THEN



NOW

50 years
A Celebration for Co-Education

THE CLASS THAT ENTERED MUHLENBERG COLLEGE IN 1957 WAS VASTLY DIFFERENT THAN ALL OTHERS BEFORE IT. This was the year that women gained acceptance, literally, at Muhlenberg – and the College was forever changed. The celebration of co-education began in August 2007 with Barbara Crossette '63, author and former *New York Times* foreign correspondent, delivering the keynote at Opening Convocation...and will continue throughout the year. The 50th Anniversary Celebration Weekend is scheduled for March 28-30, 2008 on campus. Highlights include a dinner in the Great Room where President Helm will deliver a State of the College address, followed by a viewing of reflective documentaries created by students of the media and communication department, and fireworks on the library lawn. Co-chairs of the Co-Education Anniversary Committee are Lona Farr '62 and Melanie Mason '83. For more information, call 484-664-3230 or www.muhsen.org/mgt/presoff/coed/.

About the Cover

The new science building captured by photographer Paul Pearson.

Photo Credits

Tom Amico Studios, Joe Edelman, Joseph Elliott, Peter Finger, Sharon Falk, Beth Freeman, Fred Hayes, John Hoffman, Suzanne Holderman, Bill Johnson, Atom Kallen, Todd Laffler, Paul Pearson, Marilyn Roberts

Contact Information

You can reach Muhlenberg College in several ways.

- By phone: 484-664-3230
- By fax: 484-664-3477
- Through the Internet, visit Muhlenberg's Web site at www.muhsen.org
- Letters may be addressed to:
Muhlenberg College
Public Relations
2400 West Chew Street
Allentown, PA 18104-5586

MUHLENBERG
COLLEGE

