



Fluidyne[™]
FLUID POWER

New Fluidyne & Reman Valves



- D03 & D05 Directional
- ISO 4401 Mount
- Flow Rate to 14 GPM for D03
- Flow Rate to 22 GPM for D05
- 350 Bar / 5000 PSI
- Endurance Tested to 10 Million Cycles
- Modular: Relief, Reducing Flow, Unloading, Check, Pressure Controls
- In Line Flow Controls
- Proportional / Servo Valves Cleaned, Calibrated & Repaired

Excellence
Under Pres-
sure[™]



www.FluidyneFP.com

Our Promise: *People make the difference*



FluidDyne sources from some of the world's newest progressive and technically advanced manufacturers. We are able to consistently produce high quality remanufactured Vickers, Racine, Denison, Oil Gear, Char-Lynn, and Rexroth pumps, motors, and valves. We also carry a complete line of New FluidDyne products to replace Vickers, Racine, Char-Lynn and Rexroth units in OEM and user applications. These products are 100% interchangeable in fit, form and function and are backed by over thirty years of hydraulic application, service and manufacturing experience.

FluidDyne is one of the very few hydraulic remanufacturing facilities in the world with ISO 9001 certification. We approach your technical problems, shipment demands and cost challenges in the simplest way possible. We don't stand on for-

mality but work within our entire system to get you what you need when you need it. We consider ourselves your inside technical support group and our people will go out of their way to meet your needs.

We maintain a massive inventory with a machining, finishing, assembly, and quality control operation in Fraser, MI. Our units and parts inventory allow us to ship a wide range of standard and modified products "same day". Prior to shipment, products undergo a complete documented pressure and flow performance test. These test results are printed on the bottom of your packing list and all products are given a two-year warranty. One of the reasons customers buy from FluidDyne is our consistent high quality (one of the lowest return rates in the industry) and because we provide:

- **New FluidDyne and Remanufactured Products**
- **Outstanding Customer Service**
- **Custom Proprietary software allows immediate & accurate technical support, quoting, order entry & bill of material information**
- **18 month warranty**
- **Standard & Modified Products**
- **Extensive Michigan Inventory**
- **Twelve test stands that allow for quick 100% testing of all units shipped**
- **ISO Certified**
- **End Customer Protection**
- **Performance you have come to expect**
- **Blind Drop Shipments**



Extensive Parts Inventory

Remanufactured Valves Features

We offer a wide range of FluidDyne Remanufactured Valves

Directional • Pressure Control • Relief • Unloading • Check



Valve Cores



Valve Rebuild



Valve Inventory



Valve Test Stand



Triple Pump Test Stand

We rebuild many obsolete or discontinued valves into “Like New” condition



Check us out at www.FluidDyneFP.com and take a tour of our facility.

Servo / Proportional Valve Repair

Servo / Proportional Valves

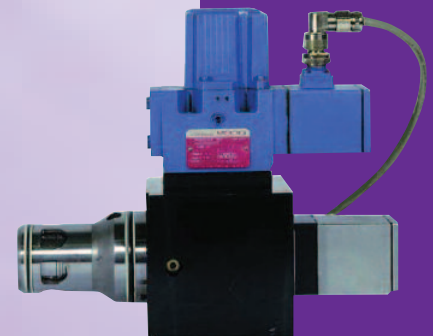
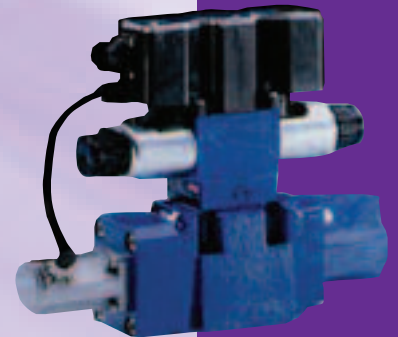
All valve evaluations begin with a complete inspection of internal parts comparing the flow, hysteresis, AFSA wear and internal leakage to OEM specifications. Tolerance are then calculated and computed to verify working order; coils and electronics are tested and measured.

We Provide:

- Complete inspection of internal parts
- Good units are cleaned and calibrated
- Broken units are quoted for full repair to as “new” condition
- Free evaluation - Units beyond economic repair are returned or scrapped at no charge
- Testing - All repaired items are fully tested prior to shipment
- Pricing - Guaranteed competitive repair price, based on parts and labor

Brands We Service:

- Atchley
- Bosch
- Cincinnati
- Moog
- MTS
- Rexroth
- Parker
- Pegasus
- Sunstrand
- Eaton
- Vickers
- Many Others



Needle Valves

- 1/8" thru 1 1/2"
- SAE or NPT
- With or Without Reverse Flow Check
- Knob Adjustment

FluidDyne Valve Features

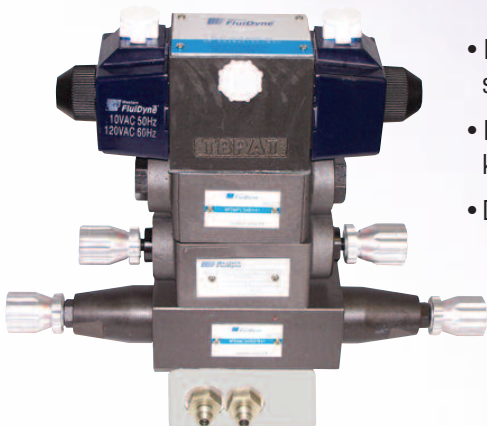
Same Day Shipments

Directional and Stack Valves



- Manifold bolt kit available for valve stacks
- DIN connections have LED light
- Wiring box has solenoid LED light

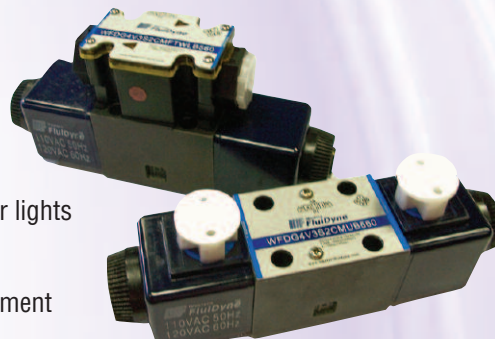
- ISO 4401 mount
- Flows to 80 LPM / 21.5 GPM
- 350 Bar / 5000 PSI pressure rating
- Two electrical connections available: DIN & Flying Lead - both have light kits
- Seven Different Spool Configurations
- Built and tested to WFD rigid specifications
- Endurance tested to 10,000,000 cycles
- Two-year material workmanship warranty
- Cost effective alternative to Rexroth, Vickers, & Parker with superior performance



D05 Stack Valve

- D05 valve with two 120v/60 solenoids and DIN connections
- Flow Control valve module with knob adjustment
- Dual pressure reducing module

- D03 valve with 1/2" wiring box and indicator lights
- Dual cross over Check Valve Module
- Pressure reducing module with knob adjustment



D03 Valve



D03 & D05 Valves

www.FluidDyneFP.com

PUMPS & MOTORS

VICKERS / EATON

▲ Genuine FluidDyne ■ Remanufactured products

VHO / VQ Single, Double & Triple

- ▲ ■ 20,25,30,35,40,45 (V/VQ)
- ▲ ■ 2520, 2521, 3520, 3525, 4520, 4525, 4535 (V/VQ)
- ▲ ■ Cart Kits available for all sizes

*Caterpillar part numbered pumps also available

Round Pumps

- V104/5, V108/9, V110/1, V124/5, V128/9, V134/5
- V144/5, V148/9, V350/3/6, V360/1/2, V368/9/70
- VC108, 138, 148 Combination Pumps

Motors

- MHT 32, 50, 70, 90, 150, 250, 330, 440
500, 660, 750, 1000
- ▲ ■ 25M, 26M, 35M, 36M, 45M, 46M, 50M

● Aftermarket ◆ Veljan

Square Pumps

- ▲ ■ V10F, V10NF, V10P, V20F, V20NF, V20P
- ▲ ■ V10, V20, V2010, V2020

Piston Pumps

- ▲ ■ PVH 57, 74, 98, 131, 141
- ▲ ■ PVE 12, 19, 21, 27, 35, 47, 62
- MVE 19
- MFE 15, 19
- ▲ ■ (M) PVB / (M) FB 5, 6, 10, 15, 20, 29, 45, 90

Transmissions

- TA, 15, 19, 1919, 19V, 21

RACINE/BOSCH

- ▲ ■ PSV 10, 15, 20, 25, 40
- ▲ ■ PSV 80, 100
- ■ PVF, PVQ, PVR
- ■ PVK, PVT, PVS
- VPV

REXROTH

- ▲ ■ A10V 28, 45, 63, 85 Series 52/53
- ▲ ■ A(A)10V 18, 28, 45, 71, 100, 140

OILGEAR

- PVW (W) (H) 06, 10, 15, 20, 34, 45, 60

CHAR-LYNN

- ▲ H Series
- ▲ S Series
- ▲ 2000, 10,000 Series
- ▲ 4000, 6000 Series

DENISON

- T6
- M4C, M4D, M4E
- PV 6, 10, 15, 20, 29

VELJAN

- ◆ VT6C, VT6D, VT6E, T7
- ◆ VT6CC, VT6DC, VT6EC, VT6ED
- ◆ VM4C, VM4D

VALVES

Pressure Controls/Relief

- X (C) G or T 03, 06, 10
- ▲ ■ CT/CG/CS/CF 03, 06, 10

Check Valves

- ▲ ■ CG5
- 4CT, 4CG
- DT8P1

Needle Valves

- ▲ ■ 1/8, 1/4, 3/4, 1 1/2

Directional Valves

- ▲ ■ D03-DG4V3, D05-DG4S4, DG4V5, DG5V5
- ▲ ■ D08-DG5S4-06, DG5S8, DG5V8, DG5VH8, D07-DG4S4-04, DG5V7
- ▲ ■ DG17V/S 03, 05
- ▲ ■ D03, D05, D07, D08 Manifold/Subplates
- ▲ ■ Sandwich, flow, pressure and Check Modules for D03, D05, D07, D08

FILTERS

FluidDyne has a full range of replacement filter elements and filter housings for:

- Pall
- Schroeder
- Hycon
- Hydac
- Vickers
- Parker

*Manufacturers names and numbers are for reference only



FluidDyne[™]
FLUID POWER

31915 Groesbeck Highway • Fraser, Michigan 48026
PH: 1-586-296-7200 • FAX: 1-586-296-7210
www.FluidDyneFP.com • Email: cs@FluidDyneFP.com

An ISO 9001:2008 Company