

New Games & Puzzles

from Tribune Content Agency



updated May 4, 2016

Table of Contents

WORD PUZZLES

ArrowWords	3
Code-Cracker	4
Word Wheel	5

LOGIC

Balancing Birds	6
Cognitive Therapy	7
Futoshiki / More or Less	
• 5x5 grid	8
• 7x7 grid	9
Hitori	10
Killer Sudoku	11
Killer Sudoku Pro	12
Samurai Sudoku	13

VISUAL

Spot the Difference	14
---------------------------	----

COMING SOON

Anagrams	Polyword
Jigsaw Sudoku	Sudoku X
Junior Mind Gym	Synagrams
Letter Logic	Word Ladder
Mind Gym	

ArrowWords

Fill in the grid using the clues provided in the direction of the arrows. When complete, unscramble the letters in the circles to reveal a mystery word.

Put into words	Waver	Hamelin problem	Pact	Observed		Coastal bird	3	Notice	Undivided	Armored vehicle		Pop's partner
						ID card feature						Consume
Keen		5				Martini base		Title In what way			4	
Reinforce											Pressed	
			9		Get to work		Word-of-mouth		Tool set		2	
Ascended		Expires		Falls in flakes						Scrabble piece		Omelet base
Confess						Invoice word		Signer's need		Small digit	7	
Even score				Changing to suit		1						
			6	Hold power					Pants part		8	
Existed	Declare						Has to have					

1	2	3	4	5	6	7	8	9
---	---	---	---	---	---	---	---	---

ANSWER TO TODAY'S PUZZLE

				T		S				M	
P	H	R	A	S	E		P	H	O	T	O
	E	A	G	E	R		O		N	A	M
	S	T	R	E	N	G	T	H	E	N	A
R	I	S	E	N		I	O		K	I	T
	T		E		S	N	O	W	S		R
	A	D	M	I	T		R			T	O
	T	I	E		A	D	A	P	T	I	N
B	E	E	N		R	U	L	E		L	E
	S	T	A	T	E		N	E	E	D	S

D I S M A N T L E

5160/2

Simon Shuker's *Code-Cracker*

Each number in our Code-Cracker grid represents a different letter of the alphabet (for example, today 20 represents L). You have two letters in the control grid to start you off. Enter them in the matching squares in the main grid and solve the starter word. Fill in other squares in the main and control grids with the found letters and look for the next word. Follow the word trail through the puzzle to its completion.

1	2	2		3	4	5		6	7	8	1	9		1	14
10		7				11		7		12		13		2	15
8	14	13	12		13	2	15	1	14	16	13	7		3	16
16		17		18		2		1		13		3		4	17
4	11	2	4	1	19	11	1	12	16			6		5	18
		1		4		2				13		1		6	19
17	7	3	8	16	5		14	20	1	21	1	7		7	20
7		16				4		1		1				8	21
3			7	1	3	22	22	1	3	7	1	23		9	22
22		11		24		3		7		14		13		10	23
22	3	4	4	22	13	7	16		22	13	1	24		11	24
1		1		16		1				24		1		12	25
23	11	4		25	26		4	25	26		1	12	23	13	26

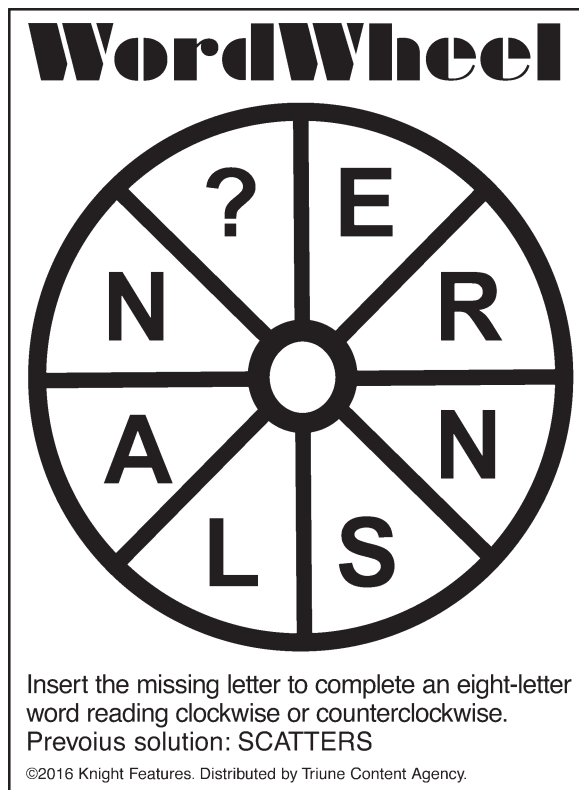
©2016 Simon Shuker. Distributed by Tribune Content Agency.

A	B	C	D	E	F	G	H	I	J	K	L	M	N	O	P	Q	R	S	T	U	V	W	X	Y	Z
---	---	---	---	---	---	---	---	---	---	---	---	---	---	---	---	---	---	---	---	---	---	---	---	---	---

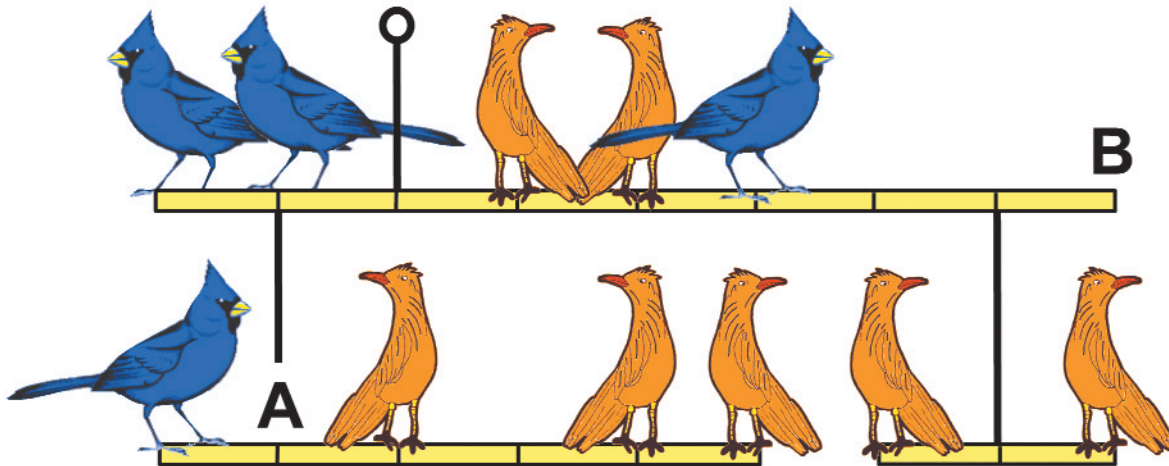
Previous solution:

1	N	2	Q	3	O	4	T	5	E	6	A	7	I	8	B	9	U	10	Z	11	H	12	X	13	G
14	P	15	J	16	C	17	R	18	Y	19	M	20	L	21	K	22	S	23	F	24	D	25	W	26	V

WordWheel



Balancing Birds



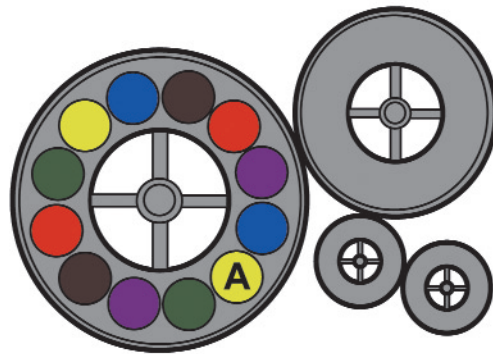
Perches of negligible weight are balanced by two different types of bird. Which missing single birds sit at positions A and B?

Solving tip: The further from the center a bird sits, the more leverage (weight times distance) it exerts. So a bird that sits two steps away from a hanging point exerts twice as much leverage as the same bird that sits one step away.

Solution: A blue bird (L) is at A and an orange (R) at B. On the bottom left perch, $1 \times L = 1 \times R + 3 \times R + 4 \times R$ so $L = 8R$. The known perch weight is $11R$. The known moment on the top left perch is $2 \times 8R + 1 \times 8R + 1 \times 11R = 35R$. The known moment on the top right perch is $1 \times R + 2 \times R + 3 \times 8R + 5 \times 2R = 37R$. So with L at A we add $1 \times 8R = 8R$ to the left and with R at B we add $6 \times R = 6R$ to the right making a total of $43R$ both sides.

Cognitive Therapy

Follow the directions to turn the wheels and determine the final position of the colors.



The small wheel has diameter 37cm, the medium 148cm, and the large one 222cm. If the bottom right small wheel makes thirty-nine turns clockwise, what colour circle finishes at position A?

Solution: The large wheel makes six and one half turns anticlockwise so yellow finishes at position A.

Futoshiki / More or Less (5x5)

	<		>	
		>	>	<
		<		
			5	

Each digit can appear only once in each row and column but still follow the > or < signs.

Solution to Monday's puzzle

1	5	2	4	>	3
4	1	3	2	5	
3	2	5	1	4	
5	>	4	1	3	2
2	<	3	4	5	1

©2016 Knight Features. Distributed by Tribune Content Agency.

Futoshiki / More or Less (7x7)

		<				
		∇		∇		∇
						<
				<		∧
1		<			7	
			∧			∧
	>		>		<	
	∧			∇	∇	
	<			<		7

Each digit can appear only once in each row and column but still follow the > or < signs.

Solution to Monday's puzzle

7	>	5	1	4	>	3	>	2	<	6
4		2	5	7		6		1		3
5		1	6	2		7		3		4
1		4	3	6		2		5		7
6		3	>	2		5		4		7
2		7	4	3		1		6	>	5
3	<	6	<	7	1	5	>	4		2

©2016 Knight Features. Distributed by Tribune Content Agency.

Hitori

5	3	1	4	6	8	4	1
1	7	4	6	2	4	8	5
4	8	5	2	1	2	6	2
6	5	1	2	5	4	3	8
6	4	2	7	8	5	5	4
1	4	6	5	3	7	3	2
4	1	2	8	5	6	5	3
7	6	8	1	4	5	4	6

©2016 Knight Features. Distributed by Tribune Content Agency.

Each digit can appear only once in each row and column. Black out repeats, but black squares cannot be next to each other or on top of each other. All white squares must be contiguous.

Solution to Monday's puzzle

1		7	8	3		2	
8	7	4	6		3	1	5
2		3	5	1	8	7	6
	1		3		4		8
4	8	2	7	6		3	
	6		4		2	8	3
6	3	8		4	7	5	
3		1	2	8		4	7

Killer Sudoku

Killer Sudoku By Crosswords Ltd.

Level: Gentle

15	2	9	27			21		
	11		11	17		19		6
7								
5	13	10			23	10		
		9				5	11	10
16	7			18	12			
	11				12		11	17
	21		24			9		
							6	

Solution to Monday's puzzle

6	5	4	2	8	7	1	9	3
8	9	1	3	6	5	7	4	2
3	2	7	9	4	1	6	5	8
7	1	2	6	5	3	9	8	4
5	3	8	1	9	4	2	7	6
9	4	6	7	2	8	3	1	5
4	6	3	5	7	9	8	2	1
2	7	5	8	1	6	4	3	9
1	8	9	4	3	2	5	6	7

Complete the grid so each row, column and 3-by-3 box (in bold borders) contains every digit 1 to 9. Digits inside the dotted cages must add up to the number in the corner of each cage, and digits can't repeat inside a cage.

© 2016 Crosswords Ltd. Distributed by Tribune Content Agency. All rights reserved.

Killer Sudoku Pro

Killer Sudoku By Crosswords Ltd.

Level: Pro

14+		9+	24×		19+		15+	6×
	18+			1-				
3+			5			15×	7	1-
	22+		5-				36×	
3-	5+		15+			42×		1
		2+		72×				1-
6+			84×		8	20+		
5-	20+		54×		30×	3+		28×

Solution to Monday's puzzle

8	1	4	6	7	3	2	9	5
5	6	7	2	9	1	3	4	8
9	3	2	5	4	8	1	7	6
4	7	1	3	2	6	5	8	9
6	5	3	4	8	9	7	2	1
2	9	8	7	1	5	4	6	3
7	8	9	1	3	4	6	5	2
3	2	5	8	6	7	9	1	4
1	4	6	9	5	2	8	3	7

All the numbers 1-9 must appear in every row, column and 3x3 section.

The target number in the corner of each cage is calculated from all the cells in the block. For example, 6x means all the cell values multiplied together equal 6. 3- indicates that the first cell minus the follow cells equals 3. 4÷ means the first cell divided by the follow cell equals 4.

© 2016 Crosswords Ltd. Distributed by Tribune Content Agency. All rights reserved.

51602

Samurai Sudoku

Level: Gentle

[illegible]

© 2016 Crosswords Ltd. Distributed by Tribune Content Agency. All rights reserved.

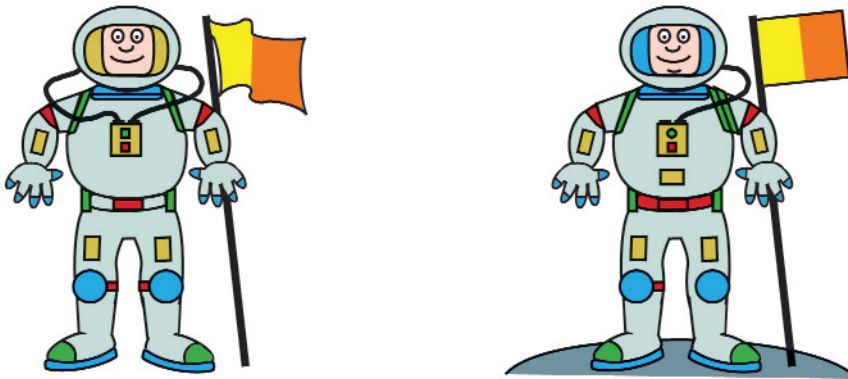
Big X Sudoku combines five overlapping sudoku grids. In each grid, all the numbers 1-9 must appear in every row, column.

Solution to today's puzzle

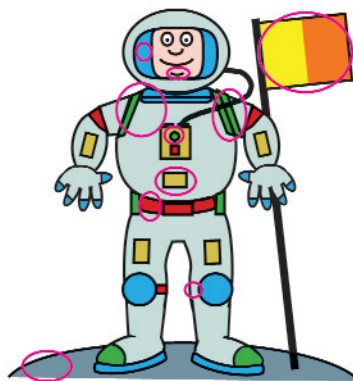
[illegible]

Spot the Difference

Can you spot 10 differences between two deceptively similar pictures?



Answer to today's illustration



5160/2