




*Be Right™*

New Insights and Technologies  
for

# Seawater Desalination





A photograph of two people climbing a steep, textured rock face. One person is higher up, reaching down to assist the other. The background shows a vast landscape of rolling hills under a sky with soft, wispy clouds, suggesting a high-altitude or mountain environment. The overall tone is one of teamwork and overcoming challenges.

# How Hach partnerships in your project

**Consultancy,  
Service and  
Support**



# Consultancy

Dedicated team specifically for desalination projects, supporting and providing the best solution and **consultancy** in each study and new plant project from the conceptual stages

# Service

Customized Service programs for your **customized** project

# Support

Dedicated backstage online **Techsupport** team providing fast response and excellence guidelines



Be Right™

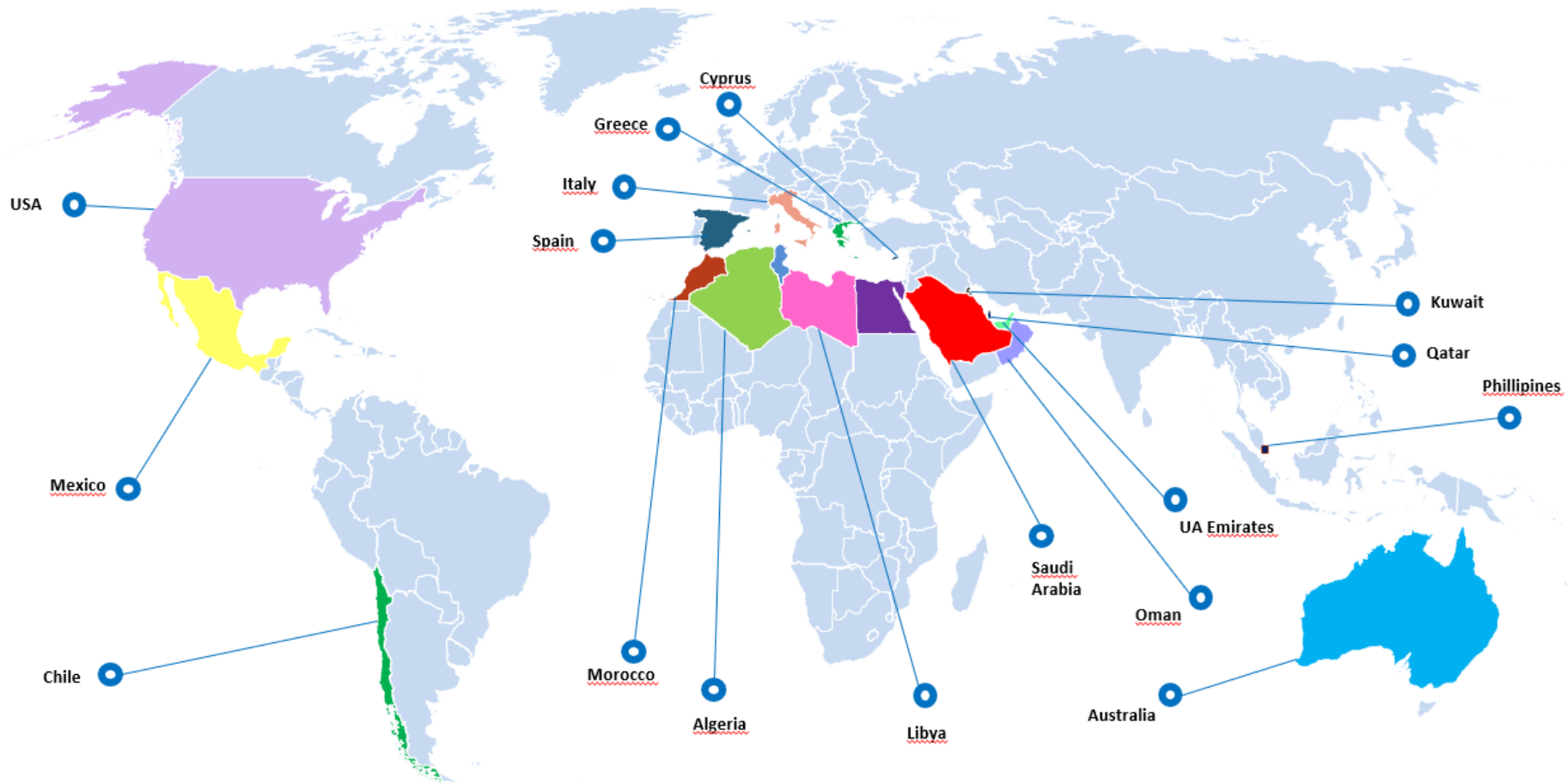


# Partnership for excellence performance

- Extended warranty options
- We adapt to your needs abroad
  - Customized commissioning
  - Service management abroad
  - Remote assistance
- Validation of applications
- Conditioned demo trials
  - ✓ Trust on the quality of Hach. Try and confirm.
  - ✓ Key asset for your success
- New available renting options



# > Hach global presence in Desalination Plants



100+ Site reference

Presence in 15+ Countries

Presence across 5 Continents



# Challenges in desalination

Feed water pretreatment is key to prevent scaling and membrane life and integrity issues

Keep normal energy use – Extended cleanings frequency – Longer life span

- Uncontrolled deposition and clogging by suspended solids, colloidal precipitates and mineral compounds
- Organic fouling, hydrocarbons fouling
- Bacterial growth - biofouling
- Membrane oxidation by chlorine
- Keep optimum and disinfected drinking water quality
- Need data and insights on a more frequent basis
- Instrument metadata integration to SCADA, DCS and DMS

**More data = More visibility/Control**



Be Right™



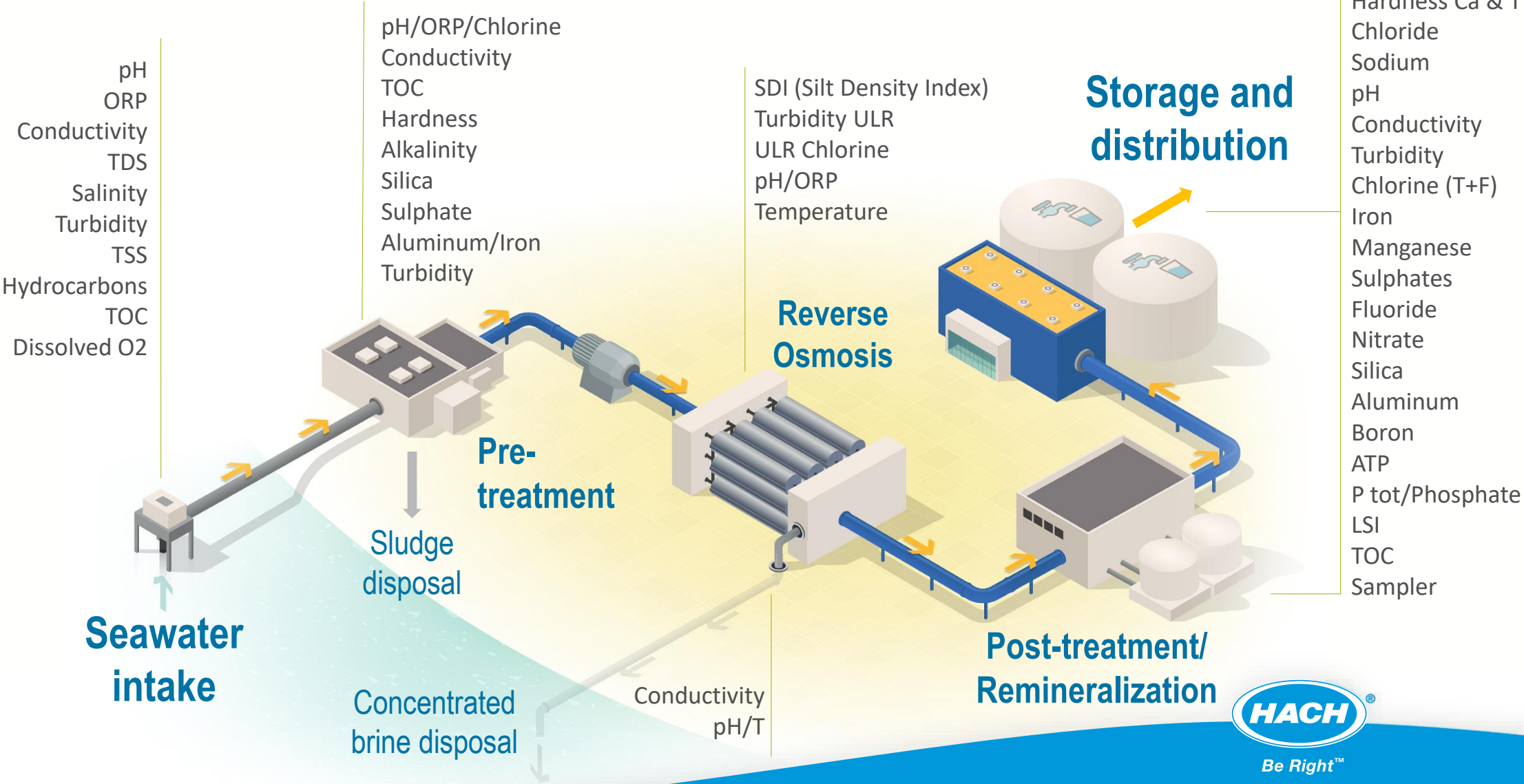


How can Hach improve  
online measurement and  
monitoring of

Seawater  
Desalination  
Plants?



# Key parameters in SWRO process







# Complete Monitoring Toolset for Desalination



# > Process solutions I

## The new EZ Series



New

### EZ1000/2000

Boron, Al, Fe, Mn, Cl<sub>2</sub>

### EZ4000

Alkalinity, Hardness, Chloride

### EZ5000

Alkalinity & Hardness in 1 analyzer

### EZ7xxx

TOC/COD/TP/TN

### EZ3000

Fluoride, Chloride

### EZ7300

ATP

## TOC - Biotector



### B7000

Intake/influent



### B3500

Low and ultra low ranges

Permeate/DW

## Disinfection



### New CL17sc and CL17 ULR

(Cl<sub>2</sub> colorimetric analyzers up to 10 ppb LOD)



### Amperometry Chlorine probes

CL10, 9184 – Free chlorine analyzers

9185 and 9187 – Ozone and Chlor dioxide

## Turbidity



### Ultraturb

#### Seawater sc

Intake/Pretreatment  
Salt resistant  
up to 65 g/l  
0-1000 NTU

### TU53 sc

High precision 360°  
Laser turbidimeter  
Permeate/drinking water



# > Process solutions II

## Suspended Solids/turbidity



**Solitax sc family**  
Plastic and Stainless Steel



**TSS sc family**  
Titanium and Stainless Steel

## E-Chem



**pH and ORP Differential**  
pHD/ORPD



**Conductivity (inductive) - 37XX**  
Intake/brine/pretreatment



**Conductivity (contacting) - 83XX**  
Permeate/Drinking water



**Dissolved Oxygen (luminescent)**  
LDO seawater sc

## Oil and hydrocarbons



**PAH 500**  
(Marine applications)

## Samplers



**AWRS**  
(All Weather Resistant)



**AS950**



**Bühler**



# > Lab/portable solutions

## Wide LCK Cuvette tests and other Hach methods



Boron, phosphate, nitrate, phosphonates, chlorides, Fe, Mn, Al, True color, Free and Total chlorine, , NH4, TP, TN, TOC, COD, Barium, silica, etc.

## Spectrophotometry



DR6000 – UV/VIS



DR3900 - VIS



DR1900 - VIS



SL1000  
(Chemkeys)

## Turbidity



2100Q  
portable



TL23



TU5200

## HQ/HQd

pH, Conductivity, ORP, ISE



Portable IP67



Benchtop

## AT1000 - titrators



Hardness  
Alkalinity  
LSI  
Chlorine

## Photometry



DR300



DR900



# New EZ Series Platform Overview



## Voltammetry

Trace of metals and metalloids

Arsenic  
Mercury  
Cadmium



## Titration

Alkalinity  
Hardness  
Ammonium  
Sulfate



## Ion-selective E.

Fluoride  
Chloride  
Sulfide  
Ammonium



## Colorimetry

Iron / Manganese  
Silica  
Boron  
Orthophosphate

## Specialized Methods

- ATP Chemiluminescence for Microbiological Load
- Total Phosphorus / Nitrogen

- WWTP Influent Toxicity
- Volatile Fatty Acids

**>100 Analyzer  
combinations**

**>50 parameter**



# EZ Series. Sample preconditioning Panels: Prefiltration & dilution

There is the appropriate EZ sample preconditioning panel for each case and type of water to be analyzed.



Complete EZ system customized panel



Universal filtration "EZ-Size"

EZ 9020



Heavy Duty = "EZ-Size AD"

EZ 9030



Microfiltration = "MicroSize"

EZ 9200



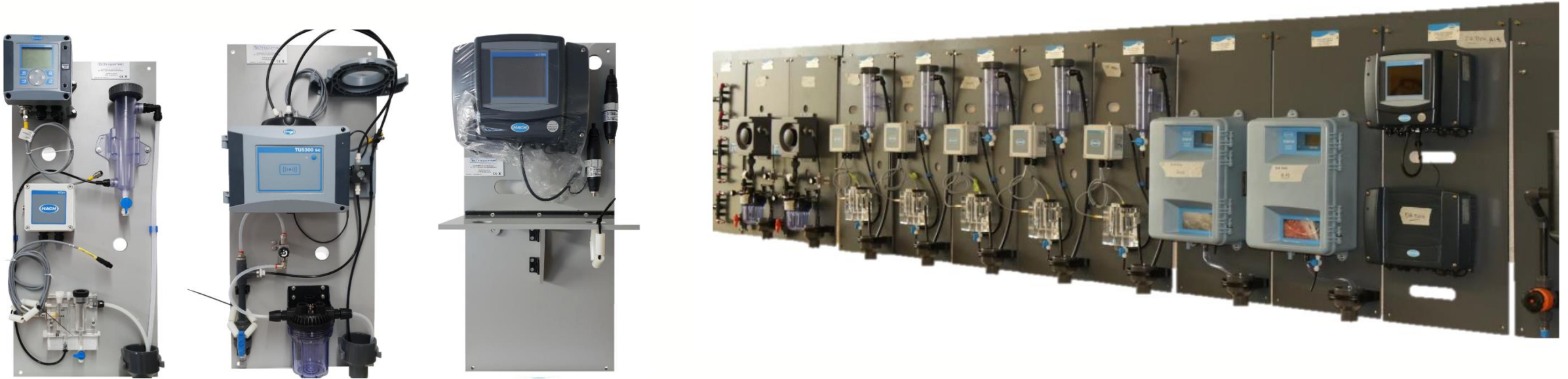
"EZ-Dilute"

EZ 9700

D particle máx. 100  $\mu\text{m}$  / <100 mg/l / Turbidity <50 NTU  
Pore size <1  $\mu\text{m}$  up to 2 mm

Up to 100x-250x, allowing  
for measuring ranges >  
than 1000 mg/L

# Panel Solutions Available for Your Projects



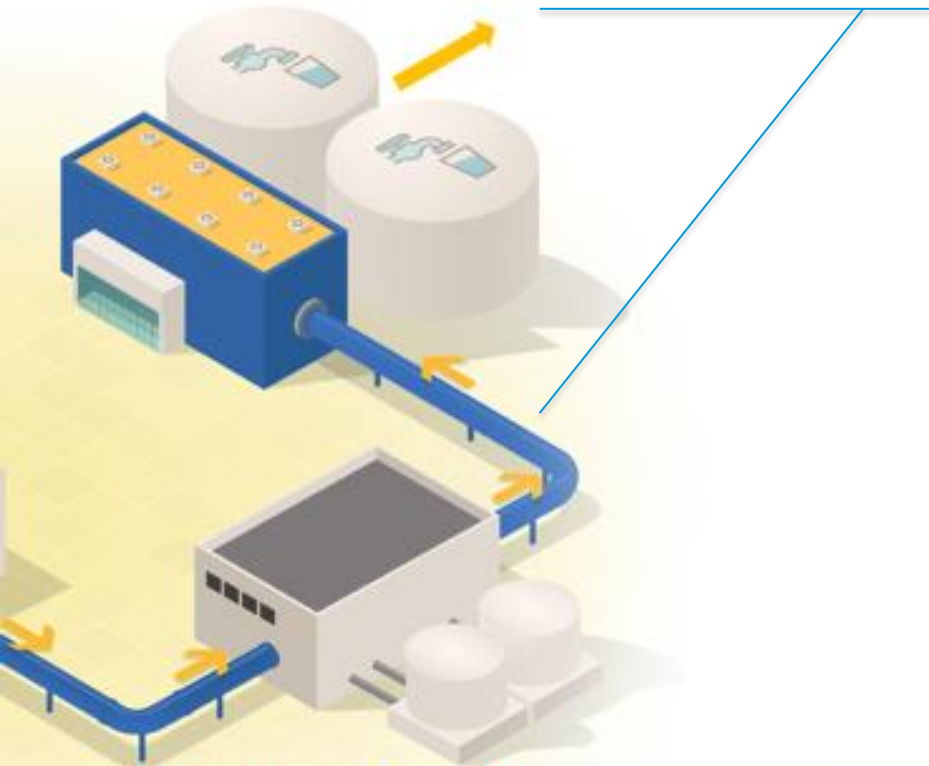
**Size optimized and standard configurable panels for instruments**

Turbidity, Chlorine, Echem (pH, ORP, DO, Conductivity), TSS, Spectrophotometric probes (Nitratax, etc.)



# Hach in the Distribution Network

Storage and  
distribution



Post-treatment/  
Remineralization

Alkalinity

Hardness

pH (&T)

Turbidity

Conductivity

Chlorine

TOC

Boron

Others  
(Phosphate,  
etc.)

LSI

Microbiological Load  
Adenosine  
Triphosphate (ATP)

EZ7300 ATP



Monitoring of the  
bacteria regrowth in the  
distribution network

# Online microbiology

## EZ7300 Series ATP Analyzer

The first microbiology analyzer using the ATP firefly assay and complying with international standard method **ASTM D4012-81**

The on-line microbiology analyzer delivers operators:

**Fast** results (7-10 minutes ≈ real-time data)

**Automation** through industrial PC / controller

**Analytical** performance

Reliability for up to **8 streams** to lower investment cost

— Stream selection with modbus or digital input





# Hach TOC Bioreactor



## INDUSTRIAL BIOTECTOR SELECTION GUIDE



	B7000i	B3500e	B3500c	B3500ul
<b>Applications</b>	<ul style="list-style-type: none"> <li>Industrial Wastewater Treatment Plant Influent and Effluent</li> <li>Process Water</li> <li>Product Loss Control</li> <li>Oil in Water</li> </ul>	<ul style="list-style-type: none"> <li>Industrial Wastewater Treatment Plant Effluent</li> <li>Discharge Control</li> <li>Storm/River Water</li> <li>Ground/Raw Surface Water</li> </ul>	<ul style="list-style-type: none"> <li>Condensate Return</li> <li>Cooling Water</li> <li>Boiler Feed Water</li> <li>Demineralized Water</li> <li>Reverse Osmosis Water</li> <li>Carbon Bed Absorber</li> </ul>	<ul style="list-style-type: none"> <li>Pharma</li> <li>Power</li> <li>Electronics</li> <li>Ultrapure Water</li> </ul>
<b>TOC Range</b>	0 - 100 up to 0 - 20,000 ppm	0 - 250 or 1,000 ppm	0 - 25 or 100 ppm	0 - 5 ppm
<b>TOC Mode</b>	TIC/TOC, TC, VOC *	TIC/TOC, TC	TIC/TOC, TC, VOC	TIC/TOC, TC, VOC
<b>Two-Stage Advanced Oxidation</b>	Yes	Yes	Yes	Yes
<b>Self Cleaning</b>	Reactor & Sample Tubing	Reactor & Sample Tubing	Reactor	Reactor
<b>Sample Characteristic</b>	<2 mm articles Dirty Fat, oil, greases, sludge and salts pH swings	<100 µm particles Semi-Dirty Some fat, oil, greases, sludge Some pH swings	<100 µm particles Clean Free of fat, oil, greases, stable pH	No particles Very Clean Free of fat, oil, greases, stable pH
<b>Number of Streams</b>	6	1	2	2

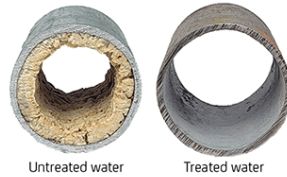
\*Configurations to measure TP/TN also available.

# Langelier Saturation Index

Storage and  
distribution



Post-treatment/  
Remineralization



LSI

SC1000  
controller



Conductivity (TDS)



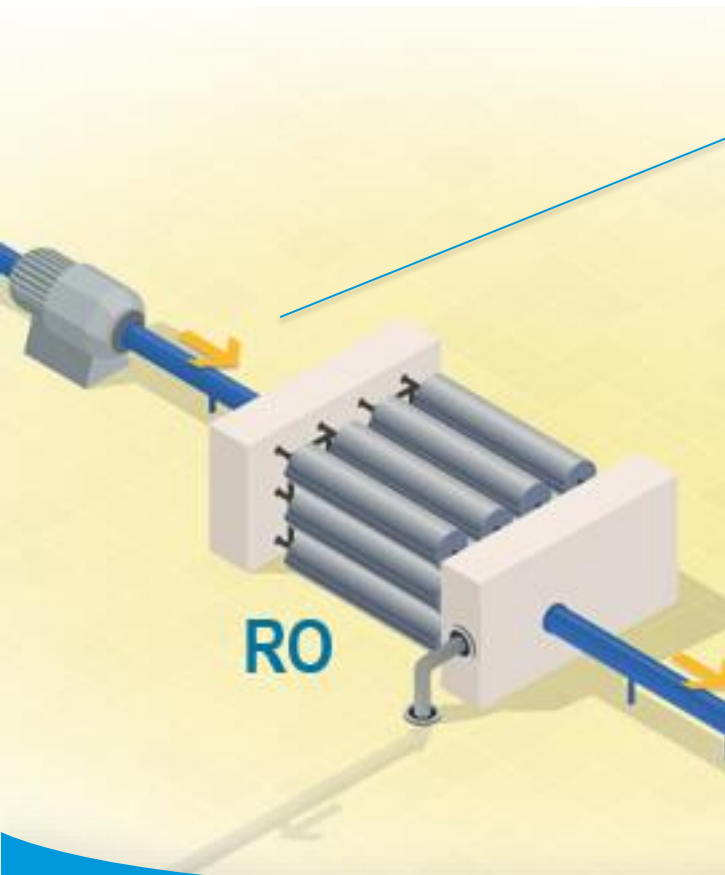
Total & Ca Hardness  
+ Total & Free Alkalinity

pH/Temp





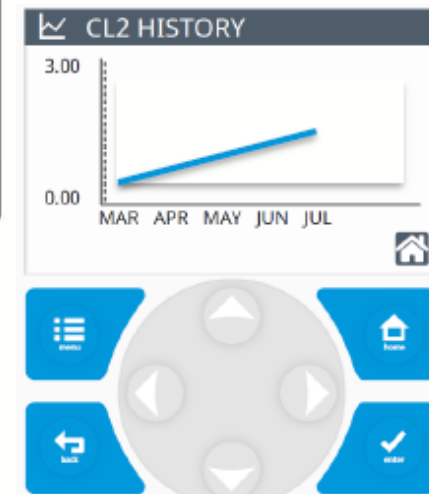
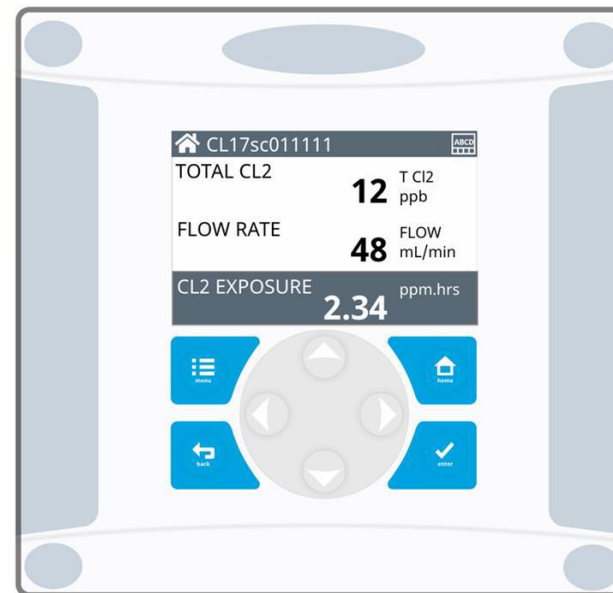
# Chlorine analyzer CL17 sc ULR



Controller  
SC200

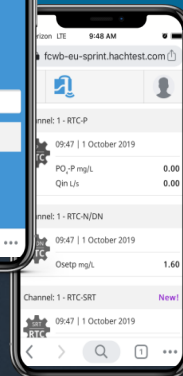
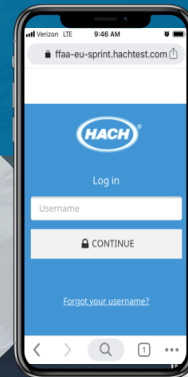


Instrument  
CL17 (version ULR – LOD 10 ppb)





Be Right™



# Digital Solutions & Smart Water by Hach

## Claros



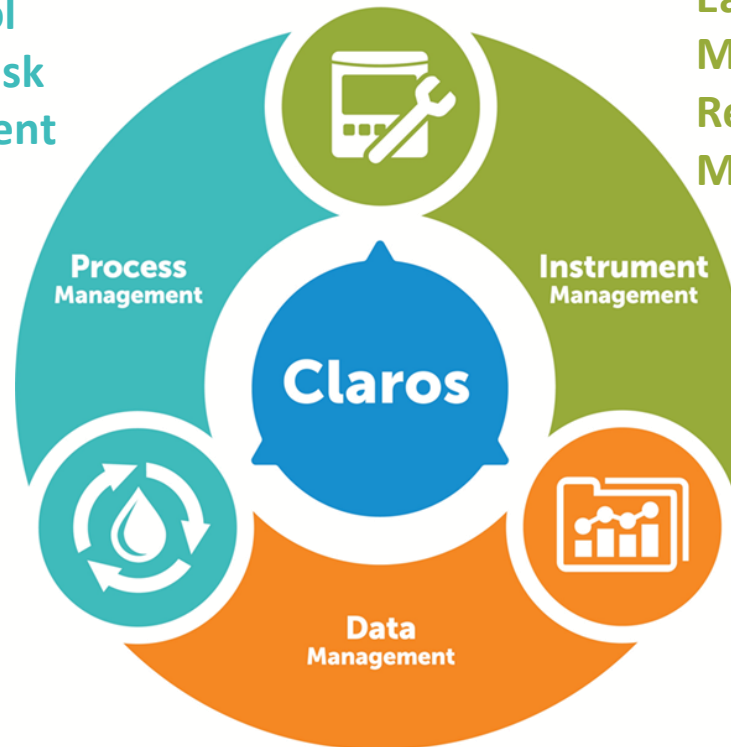
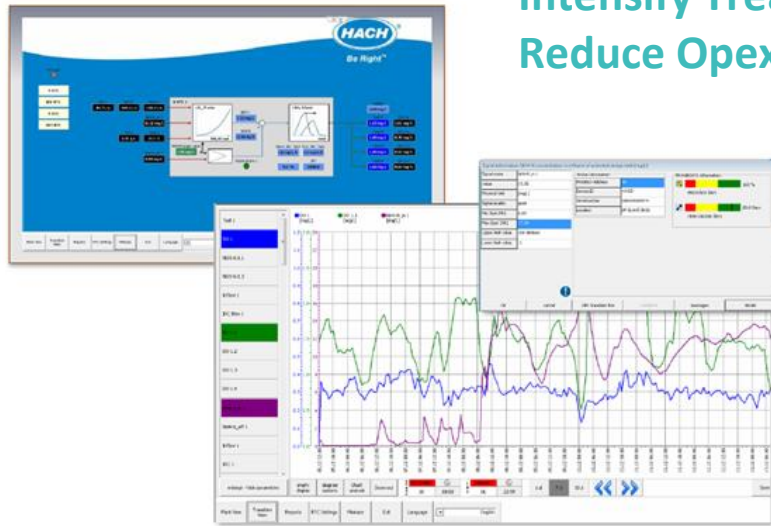
Be Right™



# Digital solutions platform Claros

Real Time Control  
Reduce Permit Risk  
Intensify Treatment  
Reduce Opex

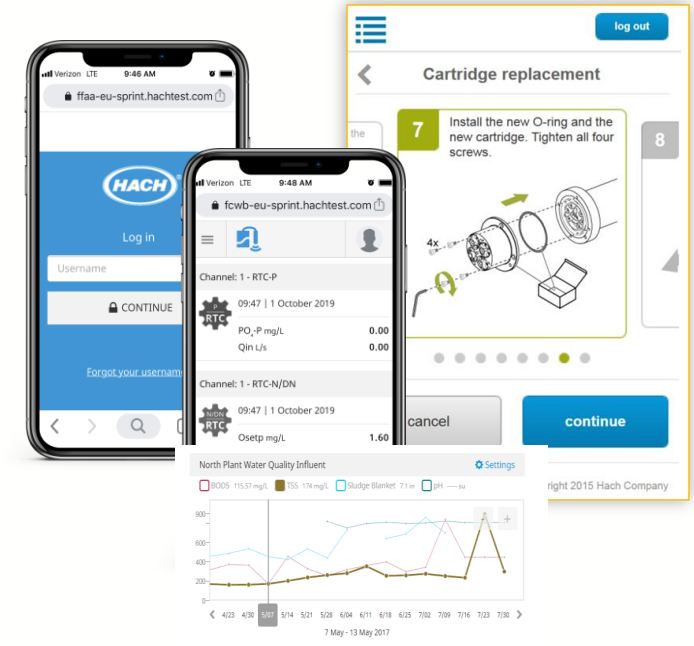
Easier Calibration / Maintenance  
Maintenance Accountability  
Remote access to data & Metadata  
Maximise instrument up-time



Aggregation of data  
= New insights into  
your permit risk and  
plant efficiency

A screenshot of a data table showing various water quality parameters over time. The table has columns for dates, locations, and numerical values. A small circular icon with a water drop is visible in the top right corner of the table area.

AQUATIC  
Informatics

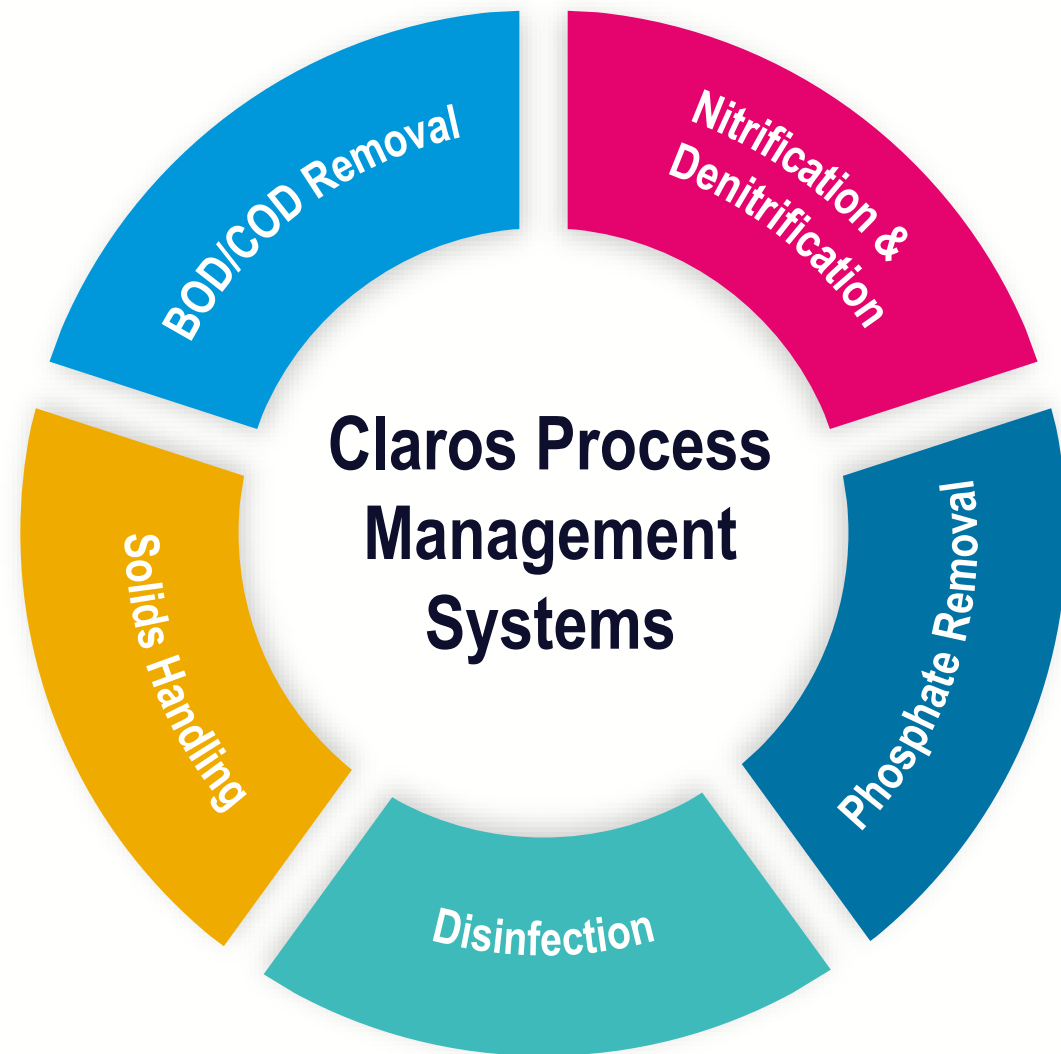


Be Right™



# Process Management

1. Collect real-time data
2. Calculate dynamic set points
3. Treatment adjusted – chemical feeds or aeration
4. Manual and automated modes available

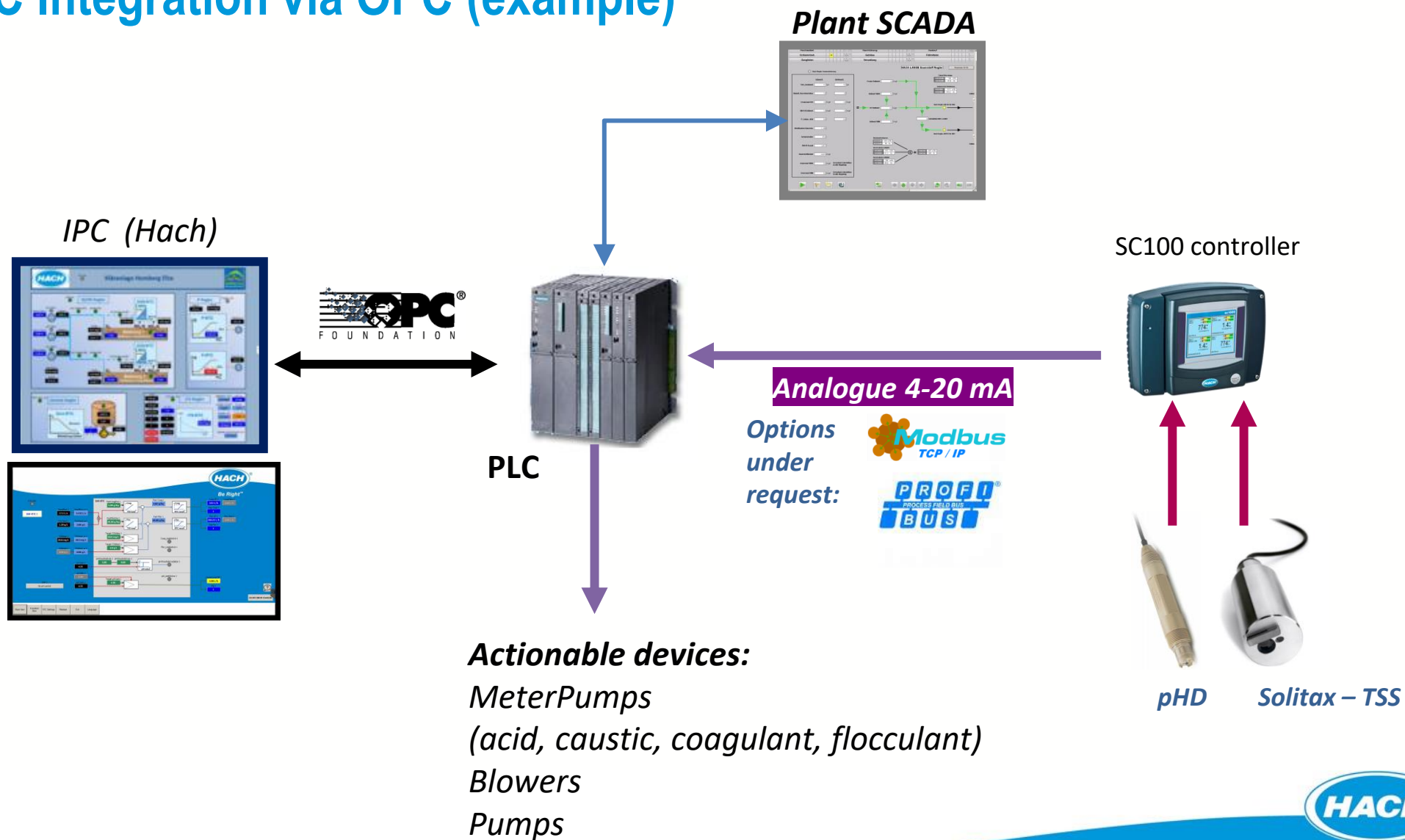






Dissolved Oxygen Control  
Ammonia Removal  
Total Nitrogen Removal  
Chemical Phosphorus Removal  
Sludge Retention Time  
RAS Control  
Sludge Thickening  
Sludge Dewatering  
DAF Coagulant/Polymer Control  
Chlorination / Dechlorination

# RTC Integration via OPC (example)



Company Confidential

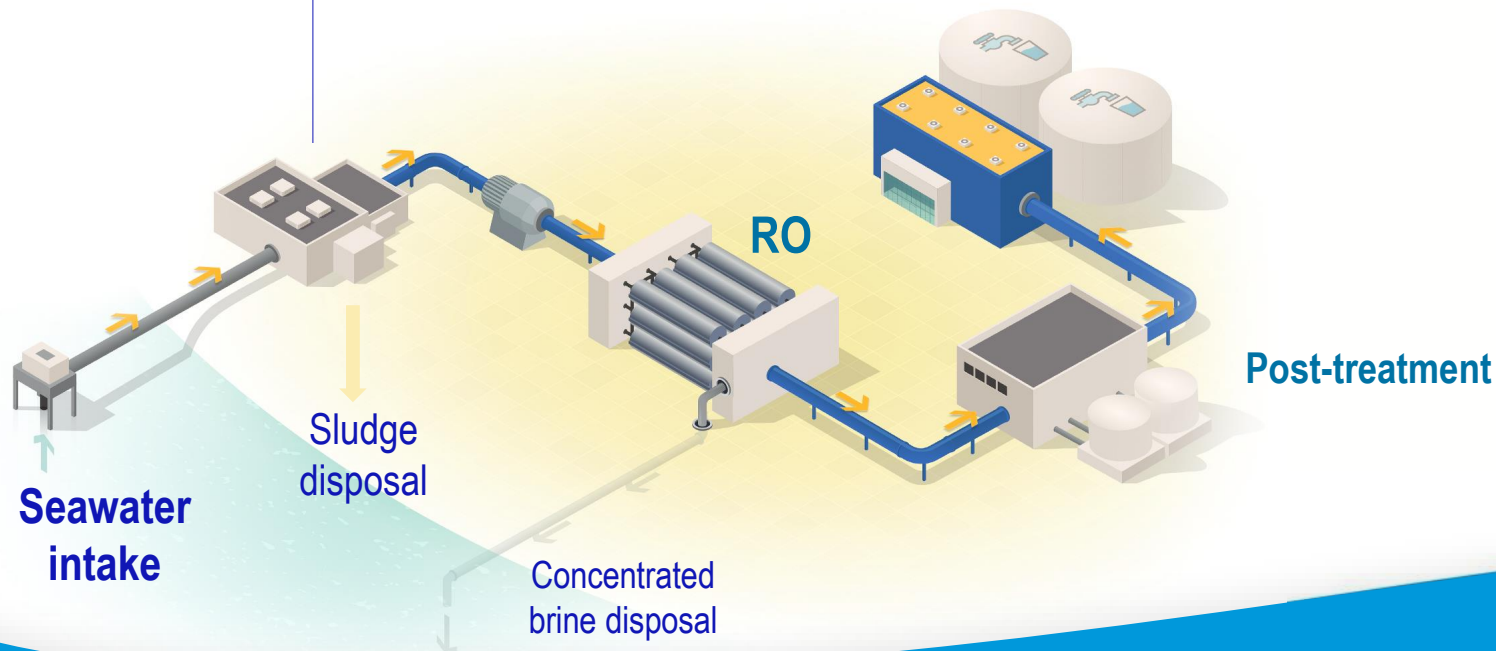


# Claros – RTC in desalination

## Pre-treatment

### RTC Modules

- Dissolved Air Flotation (DAF)
- Chlor/Dechlor
- Chemical dosing



# Claros - Mobile Instrument Management (MSM)

## Data anytime, anywhere





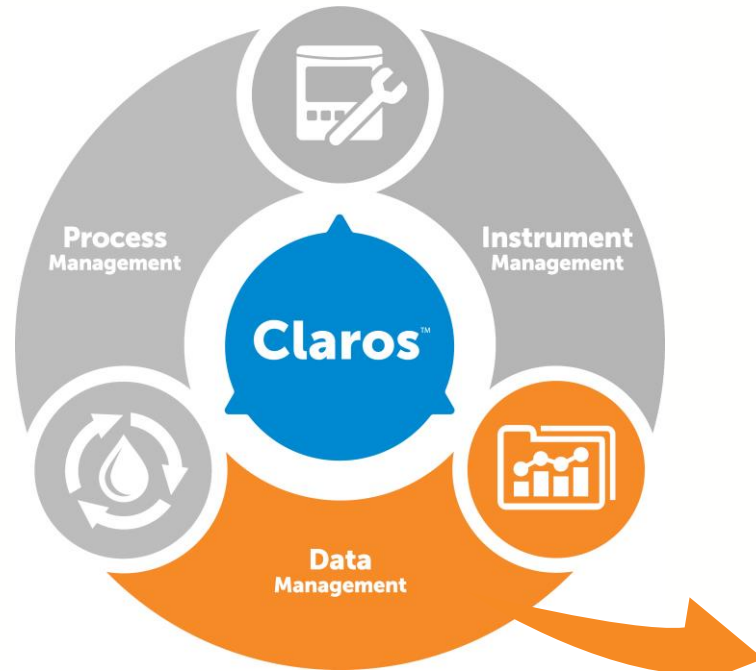
# MSM

## Mobile Sensor Management

- Access to the instrument from any device with internet connection (remote display)
  - Web app that enables access to Hach instrumentation
  - “Claros Enabled” controllers
- 
- Measurement value
  - Information about measurement quality
  - Warnings, alarms, interactive support, graphics



# Claros Data Management (Collect)

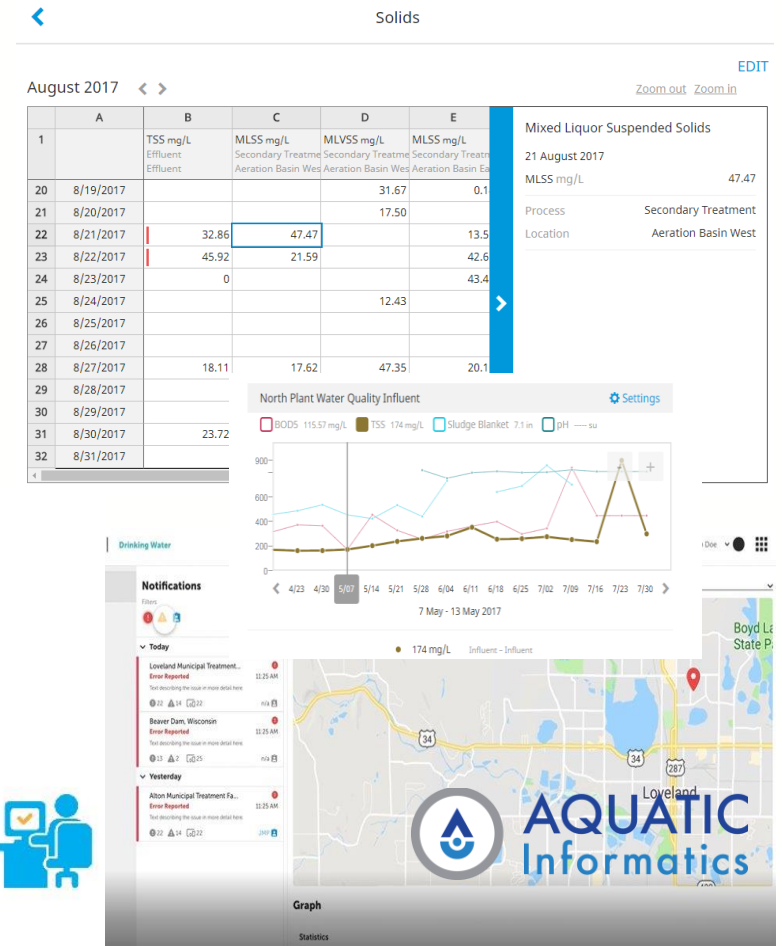


## COLLECT

- DR300 + Dongle
- User defined parameters (Flowrate, pressure, temperature, level, reagents, etc.)

DR300

## Claros Data Management interface







*Be Right™*

