



PING®

IRON

SPECIFICATIONS

MATERIALS: 431 stainless steel head, elastomer CTP weight, aluminum cavity badge w/damping tape

FINISH: Satin brushed

AVAILABLE: 3-9, PW, UW

PING STOCK SHAFTS:
CFS Distance (steel), CFS Graphite

AFTERMARKET FITTED SHAFTS (NO UPCHARGE):
Dynamic Gold, Project X, XP 95, Nippon Modus³ 105



Thin top rail and less offset



Head and hosel engineered for workability and trajectory control throughout set

Default Color Code: BLUE

TECHNOLOGY

431 STAINLESS STEEL HEAD

PERFORMANCE BENEFIT

Provides softer feel and its higher strength-to-weight ratio allows for more perimeter weighting to increase forgiveness and accuracy.

CONCEALED CUSTOM TUNING PORT

Positioned deeper in cavity and lower on face to align with impact area for a more solid sound and feel.

PROGRESSIVE SET DESIGN

Head sizes and offsets are engineered to provide forgiveness and trajectory control.

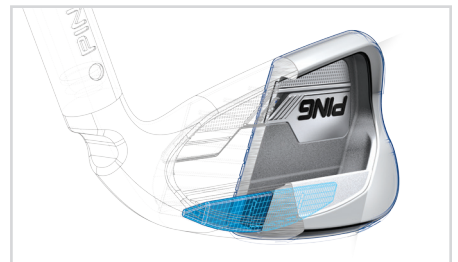
DISTANCE-GENERATING LENGTHS & LOFTS

(3-9 irons +1/4" length vs. i25 irons)
(3-8 irons 1° stronger loft vs. i25 irons)

Lengths and lofts are optimized to increase distance with proper gapping and promote higher trajectories for stopping power.

HIGH MOMENT-OF-INERTIA (MOI)

Weight savings (3-4 grams) from the 431 stainless steel and the deeper CTP position allow for expanded perimeter weighting. Tungsten toe weight in 3 - 7 irons increases forgiveness.





PING®

IRON



	LENGTH	LOFT	OFFSET	BOUNCE	SWG.T.
3 Iron	39.00"	20.00°	0.21"	4°	D1
4 Iron	38.50"	23.00°	0.19"	5°	D1
5 Iron	38.00"	26.00°	0.17"	6°	D1
6 Iron	37.50"	29.00°	0.14"	7°	D1
7 Iron	37.00"	32.00°	0.09"	8°	D1
8 Iron	36.50"	36.00°	0.07"	9°	D1
9 Iron	36.00"	41.00°	0.05"	11°	D1
PW	35.50"	45.00°	0.03"	12°	D2
UW	35.50"	50.00°	0.03"	13°	D2

PING® SHAFT OPTIONS

CFS DISTANCE (Soft R, Regular, Stiff, X-Stiff)



CFS GRAPHITE (65 Soft, 70 Regular, 80 Stiff)



AFTER-MARKET FITTED SHAFT OPTIONS (NO UPCHARGE)

DYNAMIC GOLD (S300, X100)



PROJECT X (5.0, 6.0)



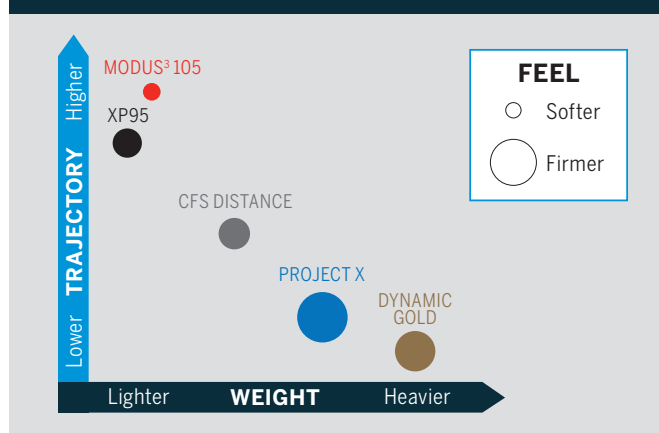
XP 95 (Regular, Stiff)



NIPPON MODUS³ 105 (Stiff, X-Stiff)



SHAFT COMPARISON CHART





PING®

GMAX IRON

SPECIFICATIONS

MATERIALS: Stainless steel head heat-treated for approx. 40% stronger faces (4-8 irons), elastomer CTP weight, aluminum cavity badge w/damping tape

FINISH: Dark satin

AVAILABLE: 4-9, PW, UW, SW

PING STOCK SHAFTS:
CFS Distance (steel), CFS Graphite

**AFTERMARKET FITTED SHAFTS
(NO UPCHARGE. NOT AVAILABLE FOR STOCK):**
Dynamic Gold, Project X, XP 95, Nippon Modus³ 105



Longer blade length and increased offset for added forgiveness and higher launch



Wide sole positions CG low/back for more forgiveness and consistency

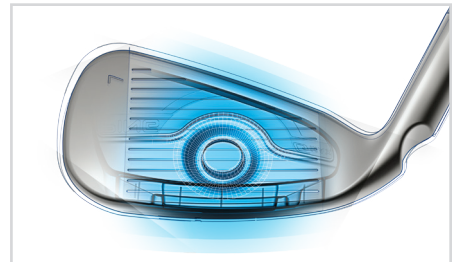
Default Color Code: YELLOW

TECHNOLOGY

SPEED-GENERATING STRUCTURE

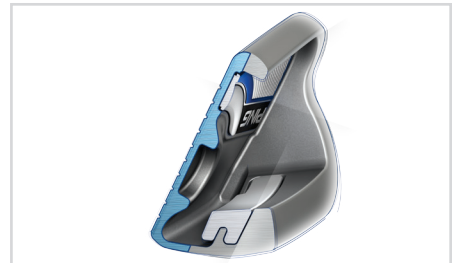
PERFORMANCE BENEFIT

Activates sole, face (31% thinner perimeter) and top rail to create more flex for increased ball speed (approximately 1-3 mph across face) leading to more distance w/control.



CUSTOM TUNING PORT (CTP) CONNECTS TO SOLE

Positions CG low/back and increases MOI for greater forgiveness, higher launch and more accuracy.



SOLE GEOMETRY

Thin sole helps increase face flex. Enhanced leading edge, greater trailing edge relief and increased bounce improve turf interaction.

PROGRESSIVE LENGTHS & LOFTS

Lengths and lofts are optimized to increase distance with proper gapping and higher trajectories for stopping power.

LIGHTER SWINGWEIGHTS IN 4-IRON (C6), 5-IRON (C7) & 6-IRON (C8)

Straight-flight technology helps square face at impact for faster ball speeds and straighter results.





PING®

GMAX IRON



	LENGTH	LOFT	OFFSET	BOUNCE	SWGT.
4 Iron	38.88"	21.00°	0.32"	2°	C6
5 Iron	38.25"	24.00°	0.30"	4°	C7
6 Iron	37.63"	27.00°	0.28"	6°	C8
7 Iron	37.00"	30.50°	0.26"	8°	C9
8 Iron	36.50"	35.00°	0.24"	9°	C9
9 Iron	36.00"	40.00°	0.22"	11°	C9
PW	35.50"	45.00°	0.19"	12°	D1
UW	35.50"	50.50°	0.17"	12°	D1
SW	35.25"	56.00°	0.14"	13°	D2

PING® SHAFT OPTIONS

CFS DISTANCE (Soft R, Regular, Stiff, X-Stiff)



CFS GRAPHITE (65 Soft, 70 Regular, 80 Stiff)



AFTER-MARKET FITTED SHAFT OPTIONS (NO UPCHARGE. NOT AVAILABLE FOR STOCK)

DYNAMIC GOLD (S300, X100)



PROJECT X (5.0, 6.0)



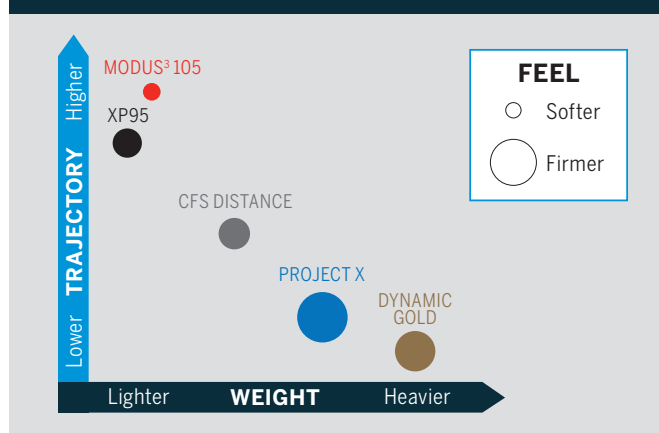
XP 95 (Regular, Stiff)



NIPPON MODUS³ 105 (Stiff, X-Stiff)



SHAFT COMPARISON CHART





PING®

IRON COMPARISONS

GMAX IRON

	HEEL/TOE MOI	TOP/BOTTOM MOI	BLADE LENGTH	SOLE WIDTH			MAX HEIGHT	7-IRON LOFT
				#4	#7	PW		
G30 vs GMax	11.5% lower	10% lower	2% shorter	2% wider	22% narrower	28% narrower	4 feet lower	30.5° vs 30.5°
GMax vs Karsten	4.3% higher	2.3% higher	1% longer		Similar	5% narrower	4 feet higher	30.5° vs 30.5°

i IRON

	HEEL/TOE MOI	TOP/BOTTOM MOI	BLADE LENGTH	TOP RAIL WIDTH	WORKABILITY	SOLE WIDTH			MAX HEIGHT	7-IRON LOFT
						#4	#7	PW		
i vs i25	Similar	Similar	Similar	5.2% thinner	2% more workable	20% wider	16.2% wider	21% wider	Similar	32° vs 33°
i vs G30	9.9% lower	1.7% higher	4.4% shorter	50% thinner	18% more workable	13.3% wider	7.5% narrower	Similar	1.2 feet lower	32° vs 30.5°
i vs S55	5.3% higher	5.1% higher	Similar	27% wider	3.1% less workable	38.4% wider	30.8% wider	35.3% wider	5 feet higher	32° vs 33°

* Similar means less than 1% difference in change



S55



i25



G30



KARSTEN



GMAX

