

NEW PRODUCT PREVIEW

A Sample of New Products Set
to Debut at FABTECH 2015



**METAL MAKES
LIFE MORE:**
connected



NORTH AMERICA'S
LARGEST METAL FORMING,
FABRICATING, WELDING
AND FINISHING EVENT

NOVEMBER 9-12, 2015 | MCCORMICK PLACE | CHICAGO

fabtechexpo.com



MADE IN
USA

UNLEASH A NEW TIGER



The NEW Tiger X flap disc raises the bar for professionals who are driven to get the job done right – and done fast. Tiger X holds nothing back with its industry-first X3 Technology that combines an advanced grain anchoring system, dual flap design and engineered backing. The result is a disc that delivers the ultimate combination of faster grinding, longer life, and greater versatility. For those who demand uncompromising performance in a disc that doesn't quit there's only one choice. Tiger X.

**Unleash Tiger X at FABTECH
by Visiting us at Booth N22025**

Mention this ad when you visit our booth for a special gift.

800.835.9999 / weilercorp.com



METAL MAKES LIFE MORE: *productive*

As an industry, the products we make improve daily life — providing safety, convenience, comfort, energy and so much more. At FABTECH 2015, you'll get full access to the people, processes and solutions needed to make it all possible and profitable. Make plans today to discover the resources for improving your bottom line. **Register to attend at fabtechexpo.com.**



WORLD-CLASS EXHIBITS

Advance Your Career, Grow Your Business.

FABTECH fosters the exchange of ideas and innovation for growth-focused products and services. Visit with over 1,500 exhibiting companies, talk to the technical experts and learn what's new — and what's next. **Review a list of exhibiting companies on pages 5 – 9 in this brochure.**



EDUCATION PROGRAM

Gain Valuable Insight From Real-World Visionaries And Your Peers.

Take advantage of over 100+ best-in-class educational and training programs targeting technical, operational, lean manufacturing, economic, and managerial segments to up your game and your confidence. **Find a complete list of educational sessions available at fabtechexpo.com/edu.**



NETWORKING OPPORTUNITIES

Collaborate With Colleagues And Potential Partners, Face-To-Face.

40,000+ like-minded metal industry professionals gathered to address challenges, share trends, discuss best practices, enhance job skills and uncover innovations. Join your peers at keynote presentations, complimentary special events and the 2nd annual FABTECH Industry Night.

Go to fabtechexpo.com/special-events to see the complete line-up of special events.

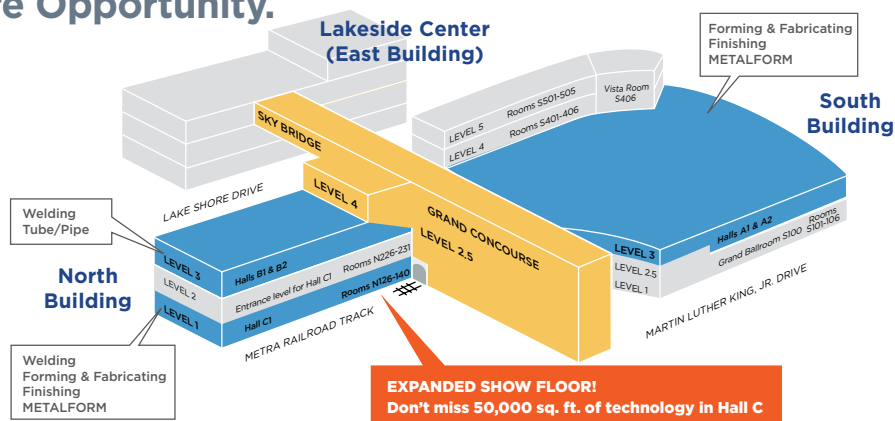
TABLE OF CONTENTS

| | |
|------------------------------------|-------|
| General Information | 3-4 |
| Exhibitor List | 5-9 |
| New Products | 10-46 |
| Arc Welding | 10-11 |
| Assembly | 11-12 |
| Bending/Forming | 12-14 |
| Brazing & Soldering | 14 |
| Business Services | 14-15 |
| Coil Processing | 15 |
| Cutting | 16-17 |
| Fastening & Joining | 17 |
| Finishing | 18-20 |
| Gases & Gas Equipment | 21 |
| Hydroforming | 21 |
| Inspection & Testing | 22 |
| Job Shop/Contract Manufacturing | 24 |
| Lasers | 24-26 |
| Lubrication | 26 |
| Machining/EDM | 26 |
| Maintenance & Repair | 26 |
| Material Handling/Marking | 26-27 |
| Other Machinery/Equipment | |
| /Parts/Products | 27-30 |
| Plate & Structural Fabricating | 30 |
| Press Brakes | 32 |
| Punching | 32 |
| Resistance Welding | 32 |
| Robotics | 32 |
| Safety & Environmental | 33-34 |
| Saws & Cut-off Machines | 34-36 |
| Software & Machine Controls | 36-38 |
| Stamping | 38-40 |
| Tool & Die | 40 |
| Tooling | 40 |
| Tube & Pipe Fabricating or Welding | 40-41 |
| Tube & Pipe Producing | 41 |
| Waterjet | 42 |
| Welding Consumables | 42-44 |
| Welding Machines/Equipment | 44-46 |

FABTECH 2015 IS GOING TO BE BIGGER THAN EVER! More Technology. More Halls. More Opportunity.

FABTECH is where deals are made and serious business gets done, around-the-clock. Make side-by-side product comparisons and uncover new ideas and solutions all while saving valuable time and money.

- 1,500+ exhibiting companies
- 650,000+ net square feet of floor space
- 40,000+ attendees
- 100+ education sessions, including content for every role
- Inspiring keynote speakers
- All industry networking event



Show Location

McCormick Place
2301 S. Martin Luther King Dr.
Chicago, IL 60616
mccormickplace.com

NEW PRODUCT PREVIEW

VOLUME 4, ISSUE 1 | SEPTEMBER 2015

The **NEW PRODUCT PREVIEW** is published annually on behalf of FABTECH® by The Fabricators & Manufacturers Association, International®
833 Featherstone Road | Rockford, Illinois 61107-6302 USA | 815-399-8700
www.fmanet.org | www.fabtechexpo.com



form knowledge



fabricate solutions



weld relationships



finish strong

START YOUR FABTECH PLANS TODAY!

How to Register

Register today online at fabtechexpo.com. Or, download a printer-friendly registration form from the Web site and fax to (508) 743-9696.

Show Hours

Monday, November 9 — 10:00 AM – 6:00 PM
Tuesday, November 10 — 9:00 AM – 5:00 PM
Wednesday, November 11 — 9:00 AM – 5:00 PM
Thursday, November 12 — 9:00 AM – 3:00 PM

Show Admission

Exhibit-only attendance is FREE through November 6, 2015. Beginning November 7, the cost to attend the exhibits is \$50. AWS, FMA, SME, PMA and CCAI members may always attend the exhibits for FREE with a valid member card.

EXCITEMENT AWAITS IN CHICAGO

Chicago has unparalleled sophistication, class, and style. Not to mention, breathtaking views. Once you are here, you will find world-class accommodations, world-renowned museums, nightlife and music for every style, theater that's home to world-premiere shows, and a dining scene that has so many accolades it's in a ranking of its own. **Go to choosechicago.com/fabtech and start making plans today to take advantage of all the city has to offer before, during and after the show.**

Get the Best Chicago Hotel Selection and Savings

Book a hotel room through Travel Planners, the official FABTECH Housing Provider, for guaranteed lowest rates and big benefits!

fabtechexpo.com/accommodations

- Free shuttle bus pass (see NOTE below)
- No booking or service fees
- Immediate confirmations
- No change or cancellation fees up to 72 hours before the event

Reserve your rooms early for the best selection and price — Chicago hotels sell out quickly!

PLEASE NOTE — Only those attendees who use Travel Planners to make hotel reservations will receive complimentary shuttle service. Shuttle passes may be purchased on-site at McCormick Place for \$30.



DOWNLOAD THE FABTECH MOBILE APP

The FABTECH app provides quick and convenient access. Download the FABTECH app to access show info on the go — exhibits, a floor plan, sessions, agenda planner and more — at fabtechexpo.com/mobile-app.



Sponsored by:



NEW PRODUCT PREVIEW

REVIEW THE EXHIBITOR LIST to schedule your visit in advance.Exhibitor List as of 8/21/15. Visit fabtechexpo.com for a complete exhibitor list.**FINISHING & COATING**

Abrasive Products & Equipment
 ACT Test Panels LLC
 ADF Systems Ltd
 Adhesive Systems Inc
 Advanced Energy
 AFC Finishing Systems
 AkzoNobel
 Powder Coatings
 American Finishing Resources
 American Grinders Inc
 Amiberica Inc
 Anest Iwata USA Inc
 APEL International
 Argon Masking Corp
 Assured Testing Services
 ATS Applied Tech Systems LLC
 Axalta Coating Systems
 AZZ Galvanizing Services
 Baril Coatings USA
 BASF Corp
 Bayco / Guspro Inc
 Bel Air Finishing Supply
 Bex Spray Nozzles
 Blast Cleaning Technologies
 Blastman Robotics Ltd
 Bronco Blast Equipment
 Bulk Chemicals Inc
 Caldian Conveyor A/S
 Calico Coatings
 Calvary Industries Inc
 Caplugs
 Castrol Industrial North America Inc
 Cataforesis SA de CV
 Catalytic Corporation
 Catalytic Industrial Systems
 Cella North America
 CFCM Canadian Finishing & Coatings Manufacturing
 Chameleon Innovations
 Chemco Manufacturing Company Inc
 Chemetall US Inc
 Chemical Coaters Assoc Int'l
 Chemico
 ChemQuest Inc
 Clean Air Technology Solutions
 Clemco Industries Corp
 Col-Met Engineered Finishing Solutions
 Columbus Industries Inc
 Combustion and Systems Inc
 Conforming Matrix Corp
 Coral Chemical Co
 Crest Industrial Chemicals Inc
 CRW Finishing Inc.
 Custom Fabricating & Supplies
 Daifuku North America - Jervis B Webb Company
 Datapaq Inc
 DeFelsko Corp
 Dinamec Systems
 Doucet Machineries Inc
 DuBois Chemicals
 DuPont Teflon Industrial Coatings
 Duroair Technologies Inc
 Dynabrade Inc
 Echo Engineering
 Eisenmann Corp
 Elcometer Inc
 Polifilm America
 Electrocoat Association, The
 ElektroPhysik USA Inc

FINISHING & COATING

Elevance Renewable Sciences
 Empire Abrasive Equipment
 Empowering Technologies
 Enhancement Technologies / Sublitex-Miroglio
 EPSI (Engineered Products & Services Inc)
 Ervin Industries
 Everest Elektromekanik
 Makine Ve Sistemleri
 San Ve Tic Ltd Sti
 EXEL North America
 Express Chem LLC
 Filter 1
 Finishing Brands
 Fischer Technology Inc
 Fostoria Process Equipment
 Gema USA Inc
 General Automatic Transfer
 General Fabrications Corp
 George Koch Sons LLC
 Gibson Abrasive Equipment LLC
 Global Finishing Solutions
 Gostol TST d.d.
 Graco Inc
 Greenkote USA
 Hedson Technologies Inc
 Henkel Corp
 Hentzen Coatings Inc
 Heraeus Noblelight LLC
 Herr Industrial Inc
 Houghton International Inc
 Hubbard-Hall Inc
 IFS Coatings Inc
 IHC Inc
 Intech Services Inc
 Intek Corporation
 Intellifinishing
 INTERTEK
 Iowa Waste Reduction Center
 IST International
 Surface Technologies
 Keyence Corp Of America
 Keyland Polymer Ltd
 KMI Systems Inc
 Koch Filter Corporation
 Kolene Corporation
 LDPI Inc
 LPI Inc
 LPR Global Inc
 Magic Rack/
 Production Plus Corp
 Main Tape
 Maryland Hydrographics
 and Powder Coating
 Metal Coaters/Metal Prep
 MetoKote Corp
 Midwest Finishing Systems
 Mighty Hook Inc
 MPC Plating
 Munters Corp
 NikoTrack LLC
 Nordson Corp
 Northern Coatings & Chemical
 Northrop Grumman
 Orient Corporation of America
 Osborn
 Oshkosh Finishing Services
 Parker Ionics
 Patriot Metal
 Finishing Systems Inc
 Paul Gardner Co
 PEM Inc
 Pneu-Mech Systems
 Polifilm America
 Pollution Control
 Products Co.

FINISHING & COATING

Porcelain Enamel Institute Inc
 Powder Coating
 Powder Parts Inc
 PPG Industries Inc
 Precious Plate Inc
 Precision Quincy Ovens LLC
 Proceco Ltd
 Products Finishing Magazine
 Prona Tools Inc
 Protech Powder Coatings
 Rapid Engineering
 Reading Technologies Inc
 Reliant Finishing Systems
 Rhodes Systems International Inc
 Richards-Wilcox Inc
 Rohner
 Ruwac
 Safety-Kleen/Ecopower
 Sata Spray Equipment
 Selas Heat Technology
 Sherwin Williams
 Shop Floor Automations Inc
 sia Abrasives Inc USA
 SIT Brushes
 Southern Systems Inc
 Specialty Metals Processing Inc
 Sponge-Jet Inc
 Spray Systems Inc
 Spray Tech/Junair
 Stoelting
 Suhner Industrial Products Inc
 Sunkiss Matherm Radiation
 Superfici America Inc
 System Technologies
 Tanis Inc
 TCI Powder Coatings
 TekVisions Inc
 The Blast Shop Inc
 The Powder Coating Institute
 Thermo-Tron-X Inc
 TIGER Drylac USA Inc
 Top Cat Air Tools
 TQC-USA Inc
 Transmet Corp
 Trimac Industrial Systems
 Uni-Spray Systems Inc
 United Industries Inc
 Valmont Coatings
 Vapor Technologies
 Venjakob North Am/Nutro
 Inc, Member of Venjakob
 Maschinenbau GmbH & Co KG
 VitaFlex LLC
 Vitraccoat America Inc
 Vogel Industrial Coatings
 VULKAN Blast Shot
 Wagner Systems Inc
 Walther Pilot North America LLC
 Webb-Stiles Co
 Whiting Corporation
 Wisconsin Oven Corp

FORMING & FABRICATING

3rd Dimension
 Industrial 3D Printing
 Abtexp Corp
 Accurl
 Accurpress America Inc
 AccuStream Inc
 Acieta
 Acrotech Inc
 Aeromet Industries Inc

FORMING & FABRICATING

Ajan Elektronik Servis
 Sanayi Ve Ticaret Ltd St
 AKS Cutting Systems Inc
 Akyapak
 Alfra USA LLC
 Alliance For American Manufacturing
 Alliance Machine and Engraving LLC
 Alliance Steel LLC
 Allied Machine & Engineering Corp
 Alma CAM USA LLC
 Alternative Parts Inc
 AM Machinery Sales Inc
 Amada America Inc
 Amada Machine Tools America Inc
 Amada Miyachi America
 Ambrell Induction Heating Solutions
 American Manufacturing Inc
 American Photonics
 American Punch Co
 AMETEK Surface Vision (formerly Cognex)
 AMS Controls Inc
 ANDRITZ Herr-Voss Stamco Inc
 Anhui Lianmeng Mould Industrial Co Ltd
 Apex Machine Group
 ARKU Coil Systems Inc
 Armstrong Kover Kwick Inc
 ARNTZ Inc.
 Arro-Mark Co LLC
 Arrowhead Manufacturers & Fabricators Assoc
 ASKO Inc
 Athader
 Autodesk Inc
 Automec Inc
 AVEVA Inc
 Bad Dog Tools
 Baileigh Industrial Inc
 Barton International
 Baykal Makine A.S.
 Beck Automation
 Beckhoff Automation
 Behringer Saws Inc
 Beka-Mak Makina Sanayi Ve Ticaret AS
 Betenbender Manufacturing Inc
 Bic Tool Co Ltd
 Big Steel Rack
 Biztiks
 Blanking Without Dies
 Blastec Inc
 Blue Chip Engineered Products Inc
 Boldrini srl
 Bollhoff Attexor SA
 BONENG Transmission USA LLC
 Bosch Rexroth Corp
 Boschert Precision Machinery Inc
 Bowlin Manufacturing Inc
 Box On Demand
 Bradbury Co Inc
 Bradbury Group Australia
 Bradbury Group Pu.Ma.
 Bradbury Group, The
 Braner USA Inc
 BROBO / Ken Bergman & Assoc LLC
 BTM Saws
 Burghardt + Schmidt GmbH
 Burny Kaliburn

FORMING & FABRICATING

Burr King
 Manufacturing Co
 Bushman Equipment
 Butech Bliss
 BUWW Coverings Inc
 Bystronic Inc
 C Marshall
 Fabrication Machinery
 Cagle Industrial Maintenance
 Cambo Inc
 Camlock Systems
 Carell Corporation
 Centricut
 CH Steel Solutions Inc
 Champion Cutting Tool Corp
 Chemtool Incorporated
 Cidan Machinery Inc
 Cincinnati Inc
 Cincinnati Inc - BAAM Exhibit
 Cleveland Punch & Die Co
 Cleveland Steel Tool Co
 CMF
 CMS North America Inc
 Coherent Inc
 Coldwater Machine Co
 COLE-TUVE Inc
 Comblift USA
 COMEQ Inc
 Comesa Srl
 CONCOA Inc
 Control Laser Corp
 Controlled Automation Inc
 Cordstrap USA Inc
 Cornerstone Capital Partners
 Cosen Saws
 Costa Sanders LLC
 Cowles Tool Co
 CR Cuscineti A Rulli Srl
 Creaform
 CTD Machines
 Current Inc
 Custom Rollforming Corp
 Cy Laser Srl
 D&H Machinery Inc
 D.I.Wire
 Daito USA Inc
 Dake Corporation
 Dalmec Inc
 Darex LLC
 data M Sheet Metal Solutions GmbH
 DAVI Inc
 DCM Tech Inc
 Denray Machine Inc
 Design Data
 Design Storage & Handling Inc
 Design-2-Part
 Dimeco Alipresse
 Divel Inc
 DoALL Sawing Products
 Dolphin Manufacturing
 Donaldson Torit - Donaldson Company Inc
 Dongbei Special Steel Group Co Ltd
 Doral Equipment Rental
 Doring Cold Saws
 DOT Quality Services
 Dr Gold & Co
 Dr Shrink Inc
 Dreistern Inc
 Durma USA
 Dynatec
 Manufacturing Inc
 Eagle Bending Machines Inc

FORMING & FABRICATING

Eastern Metal Supply
 Eberle America Inc
 Econco/CPI
 Edwards Manufacturing Co
 EHRT / International Technologies Inc
 Elmaksan Makina
 Elmali Makina Sanayi VE Ticaret Ltd Sti
 Elumatec North America Inc
 Emmegi USA Inc
 Enutron International
 Epilog Laser Corp
 Ergotech Inc
 ERIEZ
 Ermaksan Mak. San ve Tic. AS
 ESCO Tool Co
 Eurobro USA
 Eurolink Inc
 Everite
 Exact Metrology
 Fab Supply Inc
 Fabricating & Metalworking Magazine
 Fabricators & Manufacturers Association
 FabSuite - Steel Management Software
 FabTrol Systems Inc
 Faccin USA Inc
 FARO Technologies Inc
 Fascut Industries
 Felton Inc
 FF Journal/Modern Metals
 Ficep Corporation
 Fiesler Elektronik GmbH & Co KG
 FIMI Spa
 FIPA Inc
 Fisher Unitech
 Fladder-Hansen & Hundebol Inc
 FlashCut CNC
 Flexarm Inc
 Flow International - Advanced Solutions
 Flow International Corp
 Flowdrill Inc
 Fluke Corporation
 FomUSA
 Formdrill USA Inc
 Formtek Inc
 Framo Morat Inc
 FSIInspection
 Fujitsu Glovia Inc.
 Full Vision Inc
 Galaxie Corporation
 Gasparini Spa
 Gauer Metal Products Inc
 GE Mathis Co
 General Wire Form
 GMA Garnet USA Corp
 Gorbel Inc
 DoALL Sawing Products
 Dolphin Manufacturing
 Donaldson Torit - Donaldson Company Inc
 Dongbei Special Steel Group Co Ltd
 Doral Equipment Rental
 Doring Cold Saws
 DOT Quality Services
 Dr Gold & Co
 Dr Shrink Inc
 Dreistern Inc
 Durma USA
 Dynatec
 Manufacturing Inc
 Eagle Bending Machines Inc

FORMING & FABRICATING

Han's Laser / Gromax Enterprises Corp
 Han's Laser Technology
 Industry Group Co Ltd
 Hans Weber Sales and Service Corp
 Hascelik San VE TIC AS
 Hayes International
 HE&M Saw Inc
 Heck Industries
 Hexagon Metrology Inc
 HGG Profiling Equipment BV
 Hidrotam Machinery
 Hifly Mould Technology Co Ltd
 Himalaya Machinery Pvt Ltd
 HINNLI CO LTD
 Hiwin Corporation
 HK Laser & Systems
 Hougen Manufacturing Inc
 Huagong (Dalian) Innovation Technology Co Ltd
 Hyd-Mech Group Ltd
 Hypertherm Inc
 II-VI Infrared
 IMC Marks LLC
 Imperial Systems Inc
 Indiana Economic Development Corp
 Indiana Tube Corp
 Inductaflex Ltd
 Industrial Machine Trader
 Industrial Magnetics Inc
 Industrial Molded Rubber Products
 Infor
 InfoSight Corp
 Inspectech Analygas Group Inc
 Integrous Steel Software Solutions
 International Knife & Saw Inc
 International Technologies Inc
 IQMS
 ISB
 ITR Economics
 Iturrospe / ITUX
 IVEC@ SYSTEMS
 J&J Bar Plus
 JET
 Jet Edge
 JETCAM- NestONE Solutions
 JHP Fasteners Inc
 Jiangsu Tanyua Welding & Cutting Machinery Co Ltd
 Jilin Province Yuanlongda Industrial Machinery Co Ltd
 JMR Industrial
 JMT USA
 JobBOSS
 Jobscope ERP
 Joemars Machinery & Electric Industrial Co Ltd
 Johnson Bros Metal Forming Co
 Johnson Thermal Systems Inc
 JR Automation Technologies
 KAAST Machine Tools Inc
 Kalamazoo Machine Tool
 Kalamazoo Metal Muncher
 Kar Metal San Ve Tic LTD STI
 Kasto Inc

FORMING & FABRICATING

Kayahan Hydraulics
Keller USA Inc
Kelly Engineering Resources
Kennedy Mfg
Kern Laser Systems
Ketec Precision Tooling Inc.
KeyedIn Manufacturing Software Solutions
Kinetic Cutting Systems Inc
KKT chillers
Klingelhofer Corp
KMT Waterjet Systems Inc
KNUTH Machine Tools USA Inc
KoCos America LLC
Komatsu America Industries LLC
Koyo Giken Inc
Kunshan Shinfung Tooling Co Ltd
Lantek Sheet Metal Solutions
Lapham-Hickey Steel Laser Experts Inc
Laser Marking Technologies/LMT Group
Laser Mechanisms Inc
Laser Research Optics
Lazer Safe Pty Ltd
LENOX
Liang Rong Machinery Co Ltd
Lincoln Electric Co
Lissmac Corp
Livonia Tool & Laser
LT Ultra Precision Optics
LVD Strippit Lyon Industries
Machine Concepts Inc
Makita Industrial Tools Manufacturing Solutions
Maquinas Herramientas Bimex
Marcovil Stoelting
Marion Die & Fixture Inc
Marlin Steel Wire Products
Marvel Manufacturing Co
Masteel America Corp
Master Induction Heat Treat
Master Roll Manufacturing
Mate Precision Tooling
Mazak Optonics Corp
MB Metal Technologies
MC Machinery Systems Inc
Measurement Systems Intl a Rice Lake Weighing Systems Brand
Mecco Marking & Traceability
MegaFab-Piranha-Whitney-Bertsch
Messer Cutting Systems
Metal Supermarkets Service Company Inc
MetalFinish LLC
MetalForming Inc
Metalix CAD/CAM Ltd
MetalMizer
MetaMation Inc
Metform International Ltd
Metsaw Systems Inc
Metreel Inc
MG S.r.L
Micro-Surface Finishing Products
Midwest Automation
Midwest Tool Inc
MIE Solutions Inc
Millerbernd Mfg Company
Millner Haufen Tool Company
Modern Manufacturing Technologies Intl
Monroe Environmental
MTA-USA LLC

FORMING & FABRICATING

Muller - Load Containment Solutions
MultiCam Inc
Murata Machinery USA Inc
Nantong Reliantt Co Ltd
National Sheet Metal Machines Inc
Nebraska Public Power District
Ningbo Langyi Metal Products Co LTD
Nitto Denko America Inc
Nitto Kohki USA Inc
nLIGHT Corp
Noritake Co Inc
Norlok Technology Inc
North American Safety Products Inc.
NRT Canada Inc
Oasis Scientific Inc
O'Brien Installations Ltd
Ocean Machinery Inc
Ohio Laser LLC
OMAX Corp
OmegaCube Technologies
Oncor
Ophir Optics LLC
OSAI USA
Oxford Instruments
Ozbayrak Protection Technology
Pacific Press Technologies
Packsize International LLC
Pangborn Corporation
Pannier Corp
Parker Hannifin
Pat Mooney Inc
Peddinghaus Corp
PEP Technology
Perfection Global LLC
Permadr Industries Inc
Peter Prinzing GmbH
Phillips Saw & Tool Inc
Phoenix Metals Co
Pivatic
Polyurethane Products Corp
Precision Saws Inc
Preco Inc
Press Brake Safety Solutions
Prestige Equipment Corporation
Presto Lifts Inc
Prima Power North America Inc
Prodevco Industries Inc
Production Tube Cutting Inc
Project Tool & Die Inc
PythonX-A Lincoln Electric Company
Qnect Inc
Quanzhou Tengda Fine Casting Co Ltd
Quarld Ltd Lianyungang
Radan
RAS Systems LLC
Reactive & Alloy Metals Industries Inc
Red Bud Industries
Retro Systems LLC
Rhino Cutting Systems
Richardson Electronics, Ltd.
Rigidized Metals Corp
Rocklin Manufacturing Co
Roll Forming Corp
Rolled Alloys
Roller Die + Forming Co
Rosler Metal Finishing USA LLC
Rousseau Metal Inc
SafanDarley BV
Salvagnini America Inc
Samco Machinery Ltd
Sawblade.com
SB Whistler & Sons Inc

FORMING & FABRICATING

SBFM Makine San Tic Ltd Sti
Scantool
Schelling America Inc
Schneider Electric
Schnutz GmbH
Scotchman Industries Inc
Sealeze A Unit of Jason Inc
Semyx LLC
Sertom SpA
Service Lamp Corp
Servo Products
Shaoxing Inbon Machinery Co LTD
Shenzhen Wing Kam Machinery Co Ltd
Shijiazhuang Ropa Import & Export Co. Ltd
Shop Data Systems Inc
Shoptech Software
Shopvox
SIC Marking USA Inc
SICK Inc
SidePlate Systems Inc
Sideros Engineering
SigmaNEST Systems
SME
Soitaab USA Inc
Solar Atmospheres
Soph Magnetics
SPANCO Inc
SPG USA Inc
SPI Lasers UK Ltd
Stainless Structural LLC
STAM SpA
Starcyl Cylinders
State of Wyoming
Steel Craft Technologies
Steel Storage Systems Inc
Stor-Loc Corp
Stratasy Inc
Striker Systems
StruMIS LLC
Sugar Steel Corp
SUNIS International LLC
Superior Joining Technologies Inc
SuperMax Tools
Supra Machine Tool
Syspro
Tab Wrapper Tornado
Tapeswitch Corporation
T-DRILL
Team Oregon
Advanced Manufacturing
TEC Laser Tech CNC LTDA
Techflex Inc
TECHNI Waterjet
Techniks Inc
Tekla Inc
Tengzhou Tri-Union Machinery Co Ltd
TeraDiode Inc
The Extractor
The FABRICATOR
The M K Morse Company
The RDI Group
Thermal Care
Thermal Dynamics
TigerStop LLC
Timesavers LLC
Today's Industrial Products & Solutions
Toolmen Corp
Torchmate
Toskar Machinery
Trilogy Machinery Inc
Trotec Laser Inc
TRUMPF Inc
Tsune America LLC
Tube Works Inc
Turkish Machinery
TYKMA Technologies
Tyrolit Industrial Abrasives
UniPunch Products Inc
United Global Sourcing Inc

FORMING & FABRICATING

Unitool Punch & Die
Ursviken Inc
US Industrial Machinery Co
US JaClean Inc
V&S Galvanizing LLC
Vartek Machinery
Vatan Makina San Ve Tic As
VERNON Tool
Vidir Machine Inc
Vincent Clad
Meteks Corporation
Virtek Vision International
Visi
VKS - Visual Knowledge Share
Voortman Corporation
Vytek
Walker Magnetics
Wang Tung Engineering LTD
Wayne Trail Technologies
Weil Engineering North America
Wemo International B V
West Virginia Development Office
Wheelabrator Group
Wila USA
Williams Metals and Welding Alloys Inc
Wilson Tool International
Wisconsin Metal Parts Inc
Workshops For Warriors
World Economic Development Alliance
Worthington Industries
Wuxi SOS Electrical Co Ltd
Xcalibur XRF Services
Yangli
Yangzhou Metalforming Machine Tool Co Ltd
Yarde Metals Inc
YESTOOL / Aloris USA
Zhejiang Jinggong Science & Technology Co LTD
Zipp Air Tool Company
ZMac Transportation Solutions
Zund America Inc

METALFORM

3D Systems, CimatronE
AAF International
ABC Metals Inc
ACB - CYRIL BATH
Accurate Die Design Inc/ Logopress3
Accurl
Admiral Steel LLC
Agathon Machine Tools Inc
AIDA-America Corp
Aircol
Alcos Machinery Inc
Alliance Manufacturing Inc
Allor Manufacturing Inc/ Plesh Industries
Alma Machinery Co
Almco Inc
Almetals Co
Alro Steel Corporation
Amstek Metal
Anchor Danly
Anchor
Manufacturing Group Inc
ANSYS SpaceClaim
AP&T North America Inc
Appleton Manufacturing Div
Aqualid
Arisa S. A
ART Technologies Inc
ASC Machine Tools Inc
Ashland Aluminum Co
Associated Spring
RAYMOND
Atlatl Software

METALFORM

AutoForm Engineering USA Inc
Automated Tapping Systems
Automatic Feed Company
Bachman Machine Co
Ball Bros Machinery Sales Ltd
Balluff Inc
Batesville Tool & Die Inc
Beckwood Press Co
Benteler Maschinenbau GmbH
Bestar LLC
BesTech Tool Corp
Biele S A
Big Ass Solutions
Bihler of America Inc
Bilz Vibration Technology Inc
Black Hills Corporation
Bohler Uddeholm Corp
Brave Control Solutions Inc
Brown Boggs Machine Co Ltd
Bruderer Machinery Inc
Bunting Magnetics Co
Christy Metals
CHS Automation
CIECO Inc
Clayton Metals
Cleveland Metal Exchange Inc
Clips & Clamps Industries
Closed Loop Recycling
COE Press Equipment
Cogistix LLC
Coit Automation LTD
Cometel S A
Dalian Leading Metal Ltd
Dallas Industries Inc
Daubert Cromwell
DAYTON Lamina Corporation
DELTA Computer Systems Inc
Delta Industrial
DESCH Canada Ltd
Die Cad Group Inc
Diehl Steel Co Inc
Digital Lumens
Doerfer Companies - TDS Automation/Wright Industries
Dongguan A-one Metal Co Ltd
Dongguan Changhong Metal Technology Co LTD
Dongguan Qiangfa Metal Co Ltd
Dongguan SYH Tooling Co Ltd
Dongying Haihe Machinery Co Ltd
DTC Products Corporation
Durable Superior Casters
Dynamic
Eagle Brass Co
EAGLE Certification Group
Eagle Press & Equipment Co Ltd
EAS Mold & Die Change Systems Inc
Ebner Furnaces Inc
ECI M1
Ehrhardt Tool & Machine
Electrex Industrial Solutions
Elizabeth Carbide Components
Engineering Technology Associates Inc
Enrotech Industrial Technologies
Epicor Software Corporation
Erickson Metals Corp
etampa inc

METALFORM

Etna Products Inc
F & G Tool and Die Co
Fab Shop Magazine Direct
Fagor Arrasate
Feed Lease Corp
Fibro Inc
FluidForming Americas
Fontijne Formitt Inc
Fontijne Grotnes Inc
Forming Technologies Inc
FORMITALY
FORMTEK-ME
Fortech Products Inc
Fuchs Lubricants Co
GEORG
Global Metal Spinning Solutions Inc - DENN USA Metal Forming
Goessling USA Inc
Goff Inc
Gowin Checking Fixture Manufacturer Co Ltd
Graitec Inc
Green Valley Manufacturing Inc
Greener Press & Machine Company Inc
Gruber Tool & Die Inc
Guanghe Industry (Hong Kong) Co. Ltd
Hangsterfer's Laboratories Inc
Helm Instrument Co Inc
Henan Golden Sun Foundry Co Ltd
Hilma Div Carr Lane Roemheld
Hip Yick Industrial Co Ltd
Hitachi Metals America
Houghton International Inc
HTM Sensors
Hutchison Tool Sales Co
HYSON Metal Forming Solutions
IHI Ionbond Inc
IMSM Inc
Industrial Innovations Inc
Industrial Machinery Digest
Intercomp
Interlaken Technology
International Chemical Co
Irmco Inc
ISGEC Heavy Engineering Ltd
Jarvis Cutting Tools Inc
JIER North America
JIT Automation Inc
J-Tech
Kaeser Compressors Inc
Kent Corp
Kodima Co Ltd
Kolev Engineering Inc
Komatsu America Industries LLC
Kosmek USA
Kyzen Corporation
Lapeyre Stair Inc
Larson Tool & Stamping
Lasercoll Technologies LLC
Latrobe Specialty Steel Distribution
Lauffer GmbH & Co KG
Lee Contracting Inc
Leifeld Metal Spinning AG
Lenzkes Clamping Tools Inc
Linear Transfer Automation Inc
Link Electric & Safety Control
Liuzhou Shangtai Lianzhong Die Co Ltd
Logopress3/
Accurate Die Design Inc
LSP Industries Inc
Macrodyne Technologies Inc
Manitowoc Tool & Manufacturing LLC

METALFORM

Master Magnetics
Mayfran International / U.S. Tsubaki / Kabelschlepp
MDS Fastening Systems
Meccanica Rossi
Metalloid Corp
MetalRustGuard
Midwest Manufacturing News
MJC Engineering & Technology Inc
Moeller Precision Tool
Multipress Inc
Nadella Inc
National Kwikmetal Service
Neff Press Inc
Netherlands Consulate General
NGK Metals Corp
Nidec Minster Corp
Ningbo Goanwin Machinery Manufacturing Co Ltd
ODM Tool & Manufacturing Co Inc
Oerlikon Balzers Coating USA Inc
OGS Industries
OMCG North America
OMCO
Oriental Casting Inc
Oriimec Corporation of America
Orttech Inc
Otto Bihler Maschinenfabrik GmbH & Co
Ozkoc Hidrolik Makina San Ve Tic A2
P&G Fluid Power Inc
P/A Industries Inc
Pacesetter Systems
Paper-Less LLC
Paulo Products Co
Pax Machine Works Inc
Pax Products Inc
Penn United Technologies Inc
PennEngineering
Peterson Spring
Philpott Rubber/ Lankhorst Mouldings
Plex Systems
Pneumatic Innovations LLC
Polmont GmbH
Polymet - a unit of Precision Engineered Products
Porter Precision Products
Pottiez America LP
Power Breezer
Precision Metalforming Association
Precision Punch Corp
Precision Stamping Products
Premier Tooling & Mfg Inc
Prescor LLC
Press Room Equipment Co
Pressroom Electronics Inc
Prime Controls
Pronic Inc
Pure Metal Recycling
Quintus Technologies LLC
R&M Manufacturing Co LLC
Raffin Construction Co
Rapid-Air Corp
Rapidrill LLC
Raziol Zibulla & Sohn GmbH
Ready Technology Inc
Rock Valley Oil & Chemical Co Inc
Roland Industrial Electronics LP
Rolled Metal Products
Ross Controls
RUF Briquetting Systems



**INTRODUCING
THE NEW
EX-F
EASY ACCESS
FIBER LASER**

ONLY AT FABTECH

FIBER OR CO2?



**INTRODUCING
THE NEW
SR
ENTRY LEVEL
CO2 LASER**

ONLY AT FABTECH

We'll help you decide.

When it comes to laser technology, both fiber and CO2 are good for business, from fiber's low cost of operation to the powerhouse performance and versatility of CO2. So whether you're looking to upgrade, expand or rethink your technology, make sure you talk to the one source with endless expertise.



Experience the difference: mills designed with fab shops in mind

With 30 years experience delivering sophisticated solutions for a variety of shops, we know what fabricators need in a mill. From versatile, cost-efficient models to sophisticated 5-axis machines—we've built a line to meet your needs. Partner with us, and leverage a single source provider with expertise in shop floor integration, automation, and the industry's leading service and support network.

To learn more about our full line of CO2 lasers, fiber lasers and mills, visit MCMachinery.com.



METALFORM

Samson Roll Formed Products Co
 Samuel Strapping Systems
 Sander Automation Corp
 Sangiacomo Presses Americas LLC
 SB Specialty Metals LLC
 Scheffer Krantechnik GmbH
 Schmale Machinery USA LLC
 Schuler Incorporated
 SelfLube
 Serapid Inc
 SEYI America Inc
 SGO Co Ltd
 Shenzhen Manyes
 Precision Metal Co Ltd
 Shenzhen Meinie Tool & Die Co Ltd
 Shop Edge Software Inc
 ShopFloorConnect
 Simpac Inc
 SKF USA Inc
 Sourcing Allies North America
 Southern Machinery Repair Inc
 Southwestern Industries Inc
 Special Springs LLC
 Spectro Analytical Instruments
 Spectrum Ind. E-Coat Div.
 Spyraflo Inc
 Stainless Sales Corp
 StampingSimulation.com Pty Ltd
 Stamtec Inc
 Starrett Company
 Steel King Industries Inc
 Steinel Normalien Ag
 Stripmatic Products Inc
 Strothmann Machines & Handling GmbH
 Superior Die Set Corp
 Superior Roll Forming
 Sutherland Presses
 SWH Precision / Formtechnic
 Taiwan Mold Tool Co Ltd
 TCT Stainless Steel
 Tecnomagnete Inc
 The Heim Group
 The Right Corner of Texas
 Toledo Blank
 Toledo Integrated Systems
 Toptime Precision Electronics Co Ltd
 TopYes Precision
 Metal Products Co LTD
 Torque Inc
 Torque Technologies Inc
 Torspec International Inc
 Tower Oil & Technology Co
 Trans-Matic
 Travelers Insurance Inc
 Triform Sheet Hydroforming
 Turk Inc
 U.S. Tsubaki/Kabelschlepp
 Uelner Precision
 Tools & Dies
 Ulbrich Stainless Steels & Special Metals Inc
 Ultrasonic LLC
 Unisorb Installation Technologies
 Unist Inc
 United Aluminum Corp
 United Performance Metals
 Van-Am Tool & Engineering Inc
 Vaughn Manufacturing Co
 Versatility Professional Tool Storage
 Vibro Dynamics Corp
 Victory Tool
 Viking Blast & Wash Systems
 Vista Metals Inc

METALFORM

Voith Turbo Inc
 Waukesha Metal Products
 Wieland Metals Inc
 Wilco Inc
 Wintriss Controls
 Wysong
 Xinyongxu Metal & Die (shenzhen) Co Ltd
 xTuple-World's #1 Open Source ERP
 Xuyi Titan & Material Co Ltd
 Yamada Dobby Co Ltd
 Yida Mould Co Ltd
 Yong Da Precision Mould (Dong Guan) Co Ltd
 Yong Ju Machinery Co Ltd
 Yuyao Jingqiao Hardware Factory
 Zapp Precision Strip
 Zerust Corrosion Solutions
 Zhijia Tool & Die Corp

TUBE & PIPE

5 Star Engineering and Maintenance
 Accurex Measurement Inc
 Addison Machine Engineering Inc
 AddisonMcKee / Eaton Leonard
 Advanced Fabricating Machinery
 Advanced Tubular Technologies Inc
 Ajax Tocco
 Magnethermic Corp
 Alpine Bender Machinery
 AltaMAR Inc
 Ampco Metal Inc
 Asia Machine Group
 ASMAG USA Inc
 Atlanta Drive Systems Inc
 AWS Schäfer Technologie GmbH
 Beveltools
 BLM GROUP USA Corp
 Brandt Engineered Products Ltd
 Carbinite Metal Coatings
 Chicago Pneumatic Tool Co
 Chiyoda Kogyo-Maruka USA
 Clark Fixture Technologies
 Cling's Aerospace
 Combilift USA
 Comco USA Inc
 Continental Pipe & Tube Cut-Off Machines
 Crippa SPA
 Current Tech
 Design Storage & Handling Inc
 DE-STA-CO
 Douglass Mfg LLC
 Eddytech Systems Inc
 EFD Induction Inc
 eldec LLC
 EnvisionTEC Inc
 Ercolina - CML USA Inc
 Exact Pipe Tools Inc
 Fastenal Company
 FD Machinery Co Ltd
 Fives Bronx Inc
 Fromm Packaging Systems
 G.B.C. Industrial Tools S.p.A.
 Gem Tool Corporation
 George A Mitchell Co
 Global Precision Parts Inc
 Graebener Reika Inc
 Guild International
 Haven Manufacturing Corp
 Horn Machine Tools Inc
 Huth - Ben Pearson International LLC
 Hydrotube Enterprises Inc
 Ihara Science USA
 Innerspec Technologies

TUBE & PIPE

Innovative Tube Equipment Corp
 INNOVO Corp
 Intercon Enterprises Inc
 J & S Machine Inc
 Jenoptik Laser Technologies LLC
 Keep the Heat
 Kent Corp
 Lillbacka USA
 LORD Corporation
 Magnetic Analysis Corp
 Mair Research SpA
 Manchester Tool & Die Inc
 Metalloid Corp
 Metronor Inc
 Michigan Pneumatic Tool Inc
 Miic America Inc
 Mill Masters
 Mille Miglia Engineering srl
 MSI
 NBM Metals
 NDT Technologies Inc
 New Fire Co Ltd
 New Form Tools Ltd
 Numalliance Inc
 Olimpia 80 S R L
 OMNI-X USA
 Overton Industries
 Passline Performance
 Pat Mooney Inc
 Patterson Fan Co
 PAVE CNC Wire Forming Systems Ltd
 PEE WEE GmbH
 PHI
 Pines Engineering
 Proto-1 Manufacturing
 Quaker Chemical Corp
 Quantum Machinery Group
 R&B Machining Inc
 Rafter Equipment Corp
 Rattunde Corporation
 REA Elektronik Inc
 Reika GmbH & Co KG
 Rhodius
 RIDGID
 Rigaku Analytical Devices
 Roll Machining Technologies & Solutions
 Sage Automation Inc
 Sanderson Machines Ltd
 Schwarze-Robitec GmbH
 Sharpe Products
 SST Forming Roll Inc
 T&H Lemont
 technotrans Group
 Tenryu America
 Thermatool Corp
 Thermo Scientific
 Tools for Bending
 Tru-Cut Saw Inc
 Tube & Pipe Technology
 Tube 2016 Messe Dusseldorf North America
 Tube Bending Concepts Inc
 Tube Form Solutions
 Tubex Technology Machinery
 Unison LTD
 Universal Controls Group
 Universal Tool & Engineering
 Universal Tube & Rollform Equipment Corp
 WAFIOS Machinery Corp
 Waterjet USA LLC
 Watts Specialties Inc
 Wauseon Machine & Manufacturing Inc
 Wecotech AG
 Winton Machine Company

WELDING

3M
 ABB Inc-Robotics
 ABICOR BINZEL

WELDING

Above Material
 Technology Co. Limited
 ABRAX SRL
 Ace Industrial Products
 ACSYS Lasertechnik GmbH
 AGT Robotics
 Aimtek Inc
 Air Products
 Air Purification Inc
 Airflow Systems Inc
 Airgas Inc
 AixACCT Systems GmbH
 Alabama Laser
 Alabama Robotics
 Technology Pk
 Allcryo
 ALM Positioners Inc
 American Society For Nondestructive Testing
 American Technical Publishers
 American Torch Tip Co Inc
 American Welding Society
 American Weldquip Inc
 American Wire Research
 AMET Inc
 Andersen Industries Inc
 Anthony Welded Products Inc
 Antra Technologies Co Ltd
 Aquasol Corp
 ARC Holdings Inc
 Arc Machines Inc
 Arc Products
 Arc Specialties Inc
 ARCBRO
 ARCON Welding Equipment LLC
 ArcOne
 Armor Tool
 Arrow Castings Ltd
 Associated Technologies
 Weld Mount
 ATI Industrial Automation
 Auburn Manufacturing Inc
 Avani Environmental Intl Inc
 AVS Industries LLC
 AWS - Professional Welders Competition
 AWS - Robotic Competition (CRAW)
 AWS - Welding Wars Competition
 AWS Bookstore
 Axelent Inc
 AXXAIR USA
 Azarbob Software
 B&B Pipe & Industrial Tool
 Baoding Co-Better
 Cutting Tools Co Ltd
 Baoding Lanyu Welding Material Co Ltd
 Bay State Surface Technologies
 Beijing ARC Xinxing
 Science & Technology Co Ltd
 Beijing Essen Welding & Cutting Fair
 Beijing Metals & Minerals Corp
 Bellman-Melcor LLC
 Bernard
 BESSEY Tools North America
 Bestone Group Inc
 Blackburn Robotics North America
 Bluco Corp
 Bonal Technologies Inc
 Bore Repair Systems Inc
 Borkim Welding Technology
 BP Automation
 Bradford Derustit Corp
 Broad Industrial Group Ltd
 Broco Rankin
 BTIC America Corporation

WELDING

Buffalo Shrink Wrap
 BUG-O Systems Inc
 Bullard
 Bulwark Protective Apparel
 C & G Systems
 C H Symington & Co Inc
 Cadi Co Inc
 Cambridge Vacuum Engineering
 Cantesco
 Capital Weld Cleaners
 Carr Lane Manufacturing Co
 CEI
 CEIA USA
 Cerbaco Ltd
 CGW-Camel
 Grinding Wheels USA
 Changzhou City Yunhe
 Welding Material Co Ltd
 Changzhou Huarui Welding
 & Cutting Equip Co Ltd
 Changzhou Huatong
 Welding Industry Co Ltd
 Changzhou Longren
 Mechanical & Electrical Co Ltd
 Changzhou Shine Science
 & Technology Co Ltd
 Changzhou Wow
 International Trade Co Ltd
 Changzhou Wujin Golden
 Globe Welding & Cutting Machinery Co Ltd
 Changzhou Zhengyang
 Welding Material Co Ltd
 Chart Inc
 China FAW Group
 Chung I Silver Solder Co Ltd
 Cibo nv
 CK Worldwide
 Clamp-Rite
 Clamptek Enterprise Co. Ltd
 Clara Vision
 Cloos Robotic Welding Inc
 CM Industries Inc
 Cold Jet
 Compressed Air Best Practices
 Computers Unlimited
 Continental Carbonic Products
 COR-MET INC
 Cougartron
 CribMaster
 CS Unitec Inc
 Cuda Tools Inc
 Cyl-Tec Inc
 D/F Machine Specialties Inc
 Dakota Ultrasonics
 Dalian Lianhe Precision
 Sheet Metal Co. LTD
 Dalian Orient Metal Co Ltd
 Dataweld Inc
 Dengsha America Corp
 DEWALT Power Tools
 and Accessories
 Diagraph MSP an
 ITW Company
 Diamant Metallplastic GmbH
 Diamond Ground Products Inc
 Diamond Saw Works Inc
 DIG Automation
 Engineering (WUHAN) Co Ltd
 Dimplex Thermal Solutions
 Dino-Lite Scopes (BigC)
 Dinse Inc
 Direct Wire & Cable
 DiversiTech
 DualDraw LLC
 DURUM USA
 DVS Media GmbH
 Dynatorch Inc
 E. H. Wachs

WELDING

Eason Automation Systems Inc
 Eisele Connectors Inc
 ELCo Enterprises
 Elcometer Inc
 Elderfield & Hall / Pro-Fusion
 Electron Beam Technologies Inc
 Element Materials Technology
 EnergynTech Inc
 Ensitech
 Equipois LLC
 ESAB Welding & Cutting Products
 Essen Trade Shows
 ESTA Apparatebau GmbH & Co KG
 Evolution Power Tools LLC
 Factory Cat
 FANDEL Coated Abrasives
 FANUC America Corp
 Farina (Jinan) Weldtec & Machinery Co Ltd
 Fein Power Tools Inc
 Ferris State University
 Flame Technologies Inc
 Flange Wizard Tools
 Flexovit USA Inc
 Focus GmbH
 Focus Technology USA Inc
 Forney Industries Inc
 Fronius USA LLC
 Fusion Inc
 G&J Hall Tools Inc
 Ganzhou Hongfei Tungsten
 & Molybdenum Materials Co LTD
 Gasflux Co
 GE Schmidt Inc
 Gedik Welding Inc
 Genesis Systems Group
 Genstar Technologies Inc
 GeorgeB Design
 GH Induction Group
 Goff's Enterprises Inc
 Goldland Industrial Co LTD
 Goodweld Corp
 Goss Inc
 Gudel Inc
 Gullco International
 H & M Pipe Beveling Machine Co Inc
 H & S Tool Inc
 Harbert's Products Inc/
 Allied Flux Reclaiming Ltd
 Harris Products Group
 HBS Studwelding Inc
 Helvi S.p.A
 Hermes Abrasives Ltd
 Heron Machine & Electric Industrial Ltd
 Hisco
 Hobart Brothers
 Hobart Institute of
 Welding Technology
 HOSO Metal Co Ltd
 Hotfoil EHS Inc
 Hsin Fu Chia Industrial Co Ltd
 Hydromist
 IBEDA /Superflash
 Compressed Gas Equipment Inc
 Ideal Welding Systems LP
 IGM Robotic Systems Inc
 igus Inc
 II-VI HIGHYAG
 In.Motion Technology
 Distribution
 Industrial Air Solutions Inc/
 CORAL spa
 Industrial Market Place
 Industrial Solutions & Innovation LLC
 In-House Solutions Inc
 Innovative Product Ideas LLC

WELDING

Interactive Safety Products Inc
 International Welding Technologies Inc
 InterTest Inc
 IPG Photonics
 IRCO Automation Inc
 Ironworkers Management
 Progressive Action
 Cooperative Trust (IMPACT)
 ITW Pro Brands
 JASIC Technologies America Inc
 JDSU
 Jiangsu Guotai
 International Group
 Guomao Co Ltd
 Jiangxi UNICO Abrasive
 Tech Co Ltd
 Jiangyin Xinlian Welding
 Equipment Co Ltd
 Jinyu Welding & Cutting Co Ltd
 JLC Electromet Pvt LLC
 John Tillman Co
 Joysun Abrasives Co Ltd
 JP Nissen Co
 Kaindl Schleiftechnik
 Reiling GmbH
 Kalas Wire Inc
 Karnasch Professional
 Tools GmbH
 Kawasaki Robotics (USA) Inc
 Kayo Products Co LTD
 Keystone Fastening Technologies
 Kimberly-Clark Professional
 Kistler Machines
 Kiswel USA Inc
 Klimawent USA LLC
 KLINGSPOR Abrasives Inc
 Kobelco Welding of America Inc
 Koike Aronson Inc
 Koolant Coolers
 KUKA Robotics Corporation
 Kunshan Eagle
 Precision Tooling Co Ltd
 Laboratory Testing Inc
 LA-CO Industries/Markal
 Laizhou Hongyuan Bench
 Vise Manufacture Co Ltd
 Laserline Inc
 Lasermet Inc
 LaserStar Technologies Corp
 Laservision
 Letourneau University
 Lianyungang Orientcraft
 Abrasives Co Ltd
 Liburdi Dimetrics Corporation/Liburdi
 Automation Inc
 Lin An Da Yang Welding
 Material Co Ltd
 Lincoln Electric Co
 Linemaster Switch Corp
 LONGEVITY Global Inc
 LORS Machinery
 LS Industries Inc
 LSN Diffusion LTD
 Lucas-Milhaupt Global
 Brazing Solutions
 Luvata Ohio Inc
 Machinery Dealers National Assoc
 Magnatech LLC
 Magswitch Technology Inc
 Manwo Manufacturing Sdn Bhd
 Marathon Sales Inc
 Maryland Brush Co
 Matchless Metal Polish Co
 Matheson
 Mathey Dearman
 Matsumoto U.S.
 Technologies Inc

WELDING

McDantim Inc
MCR Safety
MedMassager.com
Meltric Corp
MeltTools LLC
MENNEKES Electrical Products
Mercer Abrasives
Meridian Laboratory Inc
Meta Vision Systems Inc
Metabo Corp
Metal Man Gear Co
Metal Technologies & Mgmt Inc
Metrode Products Ltd
Micro Air Products
Midallo
Miller Electric Mfg Co
Missouri Welding Institute
Mitec Welding Equipment (Shenzhen) Co Ltd
Mittler Bros Machine & Tool
MK Products Inc
Morris Engineering Works Ltd
Motofil Robotics SA
Motoyuki Co. Ltd
Movex Inc
MTI Power Services
Multi-Contact USA
Nation Wide Products
National Ornamental
National Standard
Nederman LLC
Nelson Stud Welding Inc
NetBrazo LLC
Newface Protective Co Ltd
Newland (Tianjin) Welding Wire and Metal Products Co Ltd
Ningbo Kimpin Industrial Pte Ltd
Ningbo Powerway Alloy Material Co Ltd

WELDING

Nondestructive Testing Institute (NDTI)
Nordfab Ducting
Norton | Saint-Gobain NSRW
Nutfield Technology
Nutron Nameplate Inc
Oerlikon Metco
Official German Information Stand
Olympus
Optrel Inc
OR Lasertechnology Inc
Osborn
OTC Daihen - Mobile Solution Center
OTC DAIHEN Inc
Otto Trading Inc
Oxylance Inc
Pador Marketing Group
Pandjiris Inc
Parker dominick hunter
Parweld Ltd
PDS Bartech Inc
Pearl Abrasive Co
Pemamek Oy Ltd
PFERD INC
Phoenix International Inc
Piher-Industrias Piqueras S.A.
Pillar Induction
Pine Zone (Quanzhou) Abrasives Industry Co Ltd
Pittarc Welding Wires
Plasma Automation Inc / Vicon Machinery LLC
plasma Industrietechnik GmbH
Polymet Corp
PowerWeld
Praxair Inc
Praxair Surface Technologies Inc - TAFE Division
Precitec Inc
Pro Spot International
Production Design Services
PROFAX / LENC0

WELDING

PROTEM USA LLC
Proton Onsite
PTG Heavy Industries Ltd
PT-Mat
PTR-Precision Technologies Inc
PushCorp Inc
Pyro Shield Inc
Qingdao JIT Corporation
Qingdao Qingflex Hose Factory
Radyne Corp
Rasco FR
Ratermann Mfg Inc
Realityworks
Red Rock Automation
Reis Robotics USA Inc
Resistance Welding Machine & Accessory
Revco Industries Inc
Rex-Cut Abrasives
Reyco Precision
RF System Lab
RIMCO Rotator
Rite Hite Machine Guarding
Robotmaster (Hypertherm Inc)
Robots At Work
RoboVent
Rofin-Sinar Inc
RoMan Manufacturing Inc
rose plastic USA LLLP
Ruko Tool Inc
Ruwac
RWMA - Resistance Welding Manufacturing Alliance
Saar-Hartmetall USA LLC
Saf-T-Cart Inc
Saint-Gobain Foams & Tapes
Sakura of America
Sandvik Materials Technology
SanRex Corp

WELDING

Saru Silver Alloy Private Limited
Save Phace Inc
Schaefer Ventilation Equipment
Sellstrom Manufacturing Co
Servo-Robot Inc
Shandong Huaye Tungsten | & Molybdenum Co Ltd
Shandong Yanggu Jingygang Precision Casting Co Ltd
Shanghai Gas Welding Equipment Co Ltd
Shanghai HI-ZONE Welding Equipment Manufacture Co Ltd
Shanghai Huawei Welding & Cutting Machine Sales Co.,Ltd.
Shaviv USA
Sigma Laser
Signature Plates Inc
SKC Engineering Ltd
SKM Industries Inc
Smartware Group
SMC Corp Of America
SMK Co Ltd
Song Rui Industries USA
Southern Copper & Supply
Southern Stud Weld Inc
Special Metals Welding Products Co
Staubli Corp
Steelmax Tools
SteelTailor Ltd
Steiner Industries
STOBER Drives
Stor-Loc Corp
Strong Hand Tools
Strong Hold Products
Sturbridge Metallurgical Services
Sumig USA Corporation
Summer Manufacturing Co Inc
Sunstone Engineering

WELDING

Superior Abrasives Inc
Superior Products
SYI Industrial Co Ltd
Synergy Products Inc
Synetik Design
Taylor Winfield Technologies Inc
Team Industries Inc
TEC Welding Products
Technical Translation Services
Techniweld
Technogenia Inc
Tecknoweld Alloys (overseas) Private Limited
TECMEN Electronics Co Ltd
Tec-Spiral Enterprises Co Ltd
Tennessee Rand Inc
Terralux
The Walter A Wood Supply Co
Thermacut Inc
Thermal Spray Live Demonstration - ITSA
Thermco Instrument Corp
Thermion Inc
Tianjin Xinsen Welding Materials Co Ltd
Tip Tig USA LLC
Titus Flux Reclaiming
TJ Snow Co
Tregaskiss
Trendex Inc
Tri Tool Inc
Tricor Alloys
Tri-Mer Corp
Triple Crown Products
TRU-FIT Products
TRU-Weld
Trystar Inc
TSE Safety Inc
TSG North America LLC
TWI North American LLC
Ultraflex Power Technologies Corp
U-Mark Inc

WELDING

Uniarc Limited
United Abrasives Inc /SAIT
United Lens Co
Uniweld Products Inc
Uratch Tooling Technologies Inc
VDM Metals USA LLC
Veroine LLC
Victory Plasma Systems
Vitronic Machine Vision
VJ Technologies Inc
voestalpine Bohler Welding USA Inc
VSM Abrasives Corp
Walter Surface Technologies
Washington Alloy Co
Weiler Corporation
Weld Engineering Co
Weld Mold Co
Weld Systems Integrators Inc
Weld-Aid Products
Weldas Co LLC
Weldbrush Pty Ltd
Weldcoa
Welder Training & Testing Institute
Welding Alloys USA
Welding Productivity Magazine
Weldlogic Inc
Weldobot Ltd
Weldsale LLC
Weldship Corp
Welker Engineered Products
Wendt USA LLC
Wenzhou Essen Security Technology Co Ltd
WESPRO Power Tools/TAP-RITE Tapping Systems
West Chester Protective Gear
Western Enterprises
Winnox Industries Ltd
WireCrafters Inc
Wisconsin Wire Works Inc

WELDING

Wise Welding Technology & Equipment Co Ltd
WITT Gas Controls
Wolf Robotics LLC
Wrefs Welding LLC
Wuhan Welhel Photoelectric Co Ltd
Wuxi Longteng Welding and Cutting Equipment Co Ltd
Wuxi Ronniwell Machinery Equipment Co Ltd
Wuxi Welcut Technology Co Ltd
Wuxi Yincheng Science & Technology Co Ltd
Wuxi Zhouxiang Complete Set of Welding Equipment Co Ltd
XinXiang TianFeng Machinery Manufacture Co Ltd
Xiris Automation Inc
Yaskawa America Inc
York Portable Machine Tools
Zhejiang Changzheng Project Carbon Electrodes Co Ltd
Zhejiang Guchi Electronics Co Ltd
Zhejiang Huajing Rectifier Co Ltd
Zhejiang Lissam Welding Equipment Co Ltd
Zhejiang Yuguang Aluminum Material Co Ltd
Zhengzhou Anxin Abrasives
Zhengzhou Chuanwang Welding Consumables Co Ltd
Zibo Maiké Welding Equipment Co Ltd
ZI Industries Inc

YOU ARE INVITED TO JOIN US

FABTECH INDUSTRY NIGHT AT LUCKY STRIKE®

GET READY FOR AN UNFORGETTABLE NIGHT OF NETWORKING AND FUN AFTER THE SHOW!

CHICAGO, IL USA

- Strike up a game of bowling or billiards with industry players.
- Eat, drink and enjoy some of local Chicago's favorite foods.
- Experience one of downtown Chicago's best entertainment venues.



Advance tickets for FABTECH attendees available now at fabtechexpo.com/industryntight.

Advance ticket price is \$50 and includes bowling, entertainment, food and drinks.

Media Sponsors:

the fabricator

WELDING Journal

manufacturing ENGINEERING

PRODUCTS FINISHING

Fabricating PRODUCT NEWS

NEW PRODUCT PREVIEW

EXPLORE NEW PRODUCTS

The following pages in this *New Product Preview* offer a glimpse of what's in store at FABTECH. Find descriptions and images of new machinery, new materials and new processes listed by technology and company name. To view a complete list of all the new products offered, click on the Exhibitor Search tab at fabtechexpo.com.

Arc Welding**ABICOR BINZEL**

Booth N11045
CR 1250



Water-cooler for MIG welding systems (115 V). The CR 1250 is designed for maximum cooling and easy maintenance. The 1.59 gallon coolant reservoir minimizes coolant usage and reduces maintenance costs.

Arc Specialties Inc

Booth N8045
ARC-05HVTe
Horizontal Vertical



The ARC-05HVTe welds at high deposition 8 lbs per hour using one wire. It makes automatic geometric adjustments during welding, allowing for elbow cladding. This system automatically welds cylindrical parts in horizontal, vertical, or angled orientation.

Changzhou Wow International Trade Co Ltd

Booth N18087
WOW 50-6



WOW 50-6 GMAW, GB ER50-6, AWS ER70S-6. The WOW 50-6 is a copper-coated solid welding wire.

D/F Machine Specialties Inc

Booth N20066
D/F Water-Cooled 650 Amp
MIG Pistol Grip Gun



The D/F Machine Specialties water-cooled MIG pistol grip gun is built for heavy duty applications running up to 650 amps continuously and putting down .035"-1/8" hard, cored, and aluminum wire.

Dinse Inc

Booth N26037
LITE torch



The LITE torch offers smart rotation of + / - 260 for highest precision, gas or liquid-cooled. Comes with or without wire brake, nozzle sensing or shock sensor (electrical switch).

ELCo Enterprises

Booth N26018
Torch Wizard® AP All
Pneumatic Cleaning Station



The Torch Wizard® AP features reliable all pneumatic operation, making setup and operation a breeze. Stay spatter-free when pairing the reamer with Blue Magic® or Blue Chill® anti-spatter.

Elderfield & Hall / Pro-Fusion

Booth N20067
Plasma Welding 2.0

A complete plasma welding package that connects to almost any existing GTAW power supply. Increased travel speeds, narrower HAZ, fewer tungsten changes and consistent arc starts mean greater productivity.

Electron Beam Technologies Inc

Booth N23025
Straight 'N Easy



Heavy duty Straight 'N Easy is a corrosion resistant, wire straightener for all types of continuous feed electrodes from 5/64" to 3/16".

Fronius USA LLC

Booth N18020
TPS/i Robotic Welding



Fronius introduces its new TPS/i robotic welding system. Intuitive interfacing and advanced weld processes combine to deliver an easy to use welding arc that works to improve all welds no matter how imperfect the conditions.

Goodweld Corp

Booth N22108
Nickel Base Alloy Electrode
GNC 112



The GNC112 is a low hydrogen type nickel base electrode. Mo&Nb is contained in the weld metal to offer good heat and corrosion resistance. Also offers welding of similar grade of nickel base alloy, 9%Ni steel and overlay to carbon, stainless and Ni steels. Good low temperature impact toughness.

International Welding Technologies Inc

Booth N28028
LYNX Fusion



LYNX Fusion is a micro-controlled arc stud welding system capable of welding 1/2" full base fasteners with ferrules or gas. Its easily readable high contrast display has a multitude of features while offering a simple three button user interface.

SMK Co Ltd

Booth N11089
Mamecon Tips for Arc Welding



The Mamecon Tip, which divides conventional types into two pieces, is environmental friendly and resource-saving.

Tip Tig USA LLC

Booth N28049

Portable Suitcase Feeder Systems



Tip Tig USA LLC introduces its TIP TIG portable field units available in 8" spool and 12" spool wire feed systems.

Weld Engineering Co

Booth N13025

FTV-3000 Automatic Flux Transfer Valve

The FTV-3000 for submerged arc welding transfers recovered submerged arc flux from the recovery hopper to the lower pressure feed tank. The operator simply pushes a button to add new flux.



WITT Gas Controls

Booth N28066

Gas Mixers for AWS A5.32 / A5.32M Requirements



Witt Introduces a complete line of gas mixers that maintain the gas mix according to AWS A 5.32/A5.32 M and ISO 14175 standards for mix gas quality, 2 and 3 gas mixtures are possible. Available with multiple flow ranges from 700 to 10000 SCFH.

Assembly

ALM Positioners Inc

Booth N26049

MHL1P Heavy Duty 3 Axis Single Column Positioner



Three axis 6,000 lb. capacity positioner requires no special foundation and is ideal when total product access is needed. 68.5" vertical travel in 40 seconds; 4 hp column mount hydraulic unit with pendant controlled x,y,z axis; 360° rotation option.

J-Tech

Booth S4353

Clip Nut In-Die Assembly, Tooling & Feeder



J-Tech supplies a system to auto feed and install clip nuts within progressive / transfer dies. The clip nuts are orientated in a feeder bowl and blown into the in-die tooling escapement head. The clip nut is then inserted into the part automatically.

BIGGER, BETTER, SAFER, TUBE SQUARING



Introducing Tri Tool's newest addition to our precision tube squaring solutions. The Model 301.5 SP, designed with your safety as our top priority.



Model 301.5 SP
Available with AC or Cordless DC Power

- Integral, clear Chip Guards for improved safety
- Increased .125" thru 1.50" tube size cutting range
- Powerful 18 VDC Li-ion battery for top performance
- Fast, easy, patented, Auto-Retract micrometer handle

See us at **FABTECH** Booth #N24041.
For more info call (800) 252-7879
or go to www.tritool.com



©2015

Assembly

Otto Bihler Maschinenfabrik GmbH & Co

Booth S4784
Servo-Production and Assembly System Bimeric



With the BIMERIC servo-controlled production and assembly system Bihler offers users an ideal platform for their assembly manufacturing.

WESPRO Power Tools/TAP-RITE Tapping Systems

Booth N21106
E-TAP Tapping System



E-Tap Tapping System options include; 220V single phase, 44" reach, 5/8" capacity, quick change tap chuck, manual/auto modes, variable forward/reverse speed adjustment, auto pitch/depth control, deep hole tapping mode, large easy to read display and cast aluminum construction.

Bending/Forming

Accurl

Booth C720
Hydraulic CNC Press Brake



Accurl introduces its hydraulic CNC press brake WC67Y-125T x 320 hydraulic bending machine.

Amada America Inc

Booth S901
Amada's EG 6013 AR — Robotic Bending Cell



The EG 6013 AR combines the power and precision of a servo electric press brake with an advanced bending robot. It's the ideal high-speed solution for small, complex parts, providing for unmanned processing of difficult-to-handle small parts.

Amada's HG 1003 ATC — With Automatic Tool Changer



Triple or quadruple the amount of bending setups performed each day and introduce rush jobs seamlessly.

Baileigh Industrial Inc

Booth S1780
RDB-480



The RDB-480, a new entry into Baileigh Industrial's line of Rotary Draw Benders is designed to have enough power to bend 4" schedule 40 pipe.

Bihler of America Inc

Booth S4784
Bihler 4Slide-NC



Numerically controlled 4Slide machine with a production speed of up to 250 ppm, offering tooling compatibility, affordable and reliable servo technology, Internet of Things Inside and Instant Setup Readiness.

Boldrini srl

Booth S3357
Boldrini PAO 600



Boldrini srl introduces the PAO 600 ton x 5200mm Hydraulic Dishing Press and MSFT 80 (8 ton) Automatic Manipulator.

C Marshall Fabrication Machinery

Booth S3562
Plate Straightening Machine



MG introduces its SP line of straightening machines. These machines are able to eliminate all forms of curvature and undulation of the metal sheet plate.

Cidan Machinery Inc

Booth S3184
PRO Z

CIDAN is releasing its PRO Z up – down folder. With a 9ga (4mm) x 126" (3200mm) folding capacity the PRO Z will allow operators to form heavy material without flipping the part over for reverse bends.

Comco USA Inc

Booth N2064
TMS-30E Electric Series



TMS series CNC bender offers a lower cost option while retaining quality, speed, and flexibility. Comco implemented an electric bender (No Hydraulic) quick-change tooling process that allows set-ups in less than 10 minutes.

Eagle Bending Machines Inc

Booth S3919
Portable Eagle Roll Bender Model CP30-MS



The Eagle CP30-MS compact & portable roll bending for field use, high brightness, high contrast digital readout, 18 component universal tooling set, and optional tooling for tube, pipe, angle, & architectural profiles.

Fascut Industries

Booth S2139
Fascut FRH-850 Rotary Solid Bar Bender



The Fascut FRH-850 is an American-Made rotary solid bar bender, offering flexibility to each and every fabricator.

GrishamWorks LLC

Booth C424
BrakesAlot 3000
Sheet Metal Brake



The BrakesAlot machine is the first of its kind capable of bending complete boxes up to 1/4 inch plate with a closed bend over the top bar. Pivoting top bar for removal of part with closed bends. Custom 4-way lower die (2" 1.5" 1" 3/4")

Haeusler AG Duggingen

Booth S2797
CAM/CNC Angle Roll HPR 1700



The development is based on a HAEUSLER angle roll HPR 1700

and enables the machine to continuously load and run CNC programs for forming complex, multi-radius tubing.

Himalaya Machinery Pvt Ltd

Booth C123
Fully Hydraulic Plate Rolling Machine



Himalaya Plate Rolling Machines work on the pinch cum pyramid principle. The machines based on this principle combine the advantages of three roll pyramid type, three roll initial pinch type and four roll pinch type machines.

Horn Machine Tools Inc

Booth N2025
HMT 3.5E-MS All Electric



With capacities from 2" to 10" the HMT 3.5E-MS is based on the proven design of the HMT hybrid benders, with the clamp and pressure die now equipped with large electric servo motors.

Johnson Bros Metal Forming Co

Booth S2235
Price Card Moulding Sections into Ring



Johnson Bros Metal Forming Co offers price card mouldings

formed into rings with slots and end fabricating.

Leifeld Metal Spinning AG

Booth S4184
Spinning Center SC 205



Leifeld Metal Spinning AG offers its SC205 small entry model of spinning machines.

MegaFab-Piranha-Whitney-Bertsch

Booth S1737
Bertsch CNC Control



Bertsch offers the CNC control optional on all new 4 roll machines.

What's the difference between an electroplated Cr(VI) part and a Vapor Tech LTAVD* Chrome part?

Vapor Tech LTAVD Chrome is better

- Retains the appearance and improves performance compared to Cr(VI)
- Cost-effective, durable, color-matched
- Environmentally safe
- Eliminates the regulatory complexity, cost, & health exposure of Cr(VI) electroplating

* Low Temperature Arc Vapor Deposition



Learn how Vapor Tech coating systems can play a role in your operations

www.vaportech.com

✓ visit us at booth **S5670**

Bending/Forming

MetalForming Inc

Booth S3988
MAK 4 Evolution 40/5 UD ATC



The Schroeder MAK 4 Evolution is a large servo-electric, bidirectional, automatic tool-change folder. Bend a far greater range of part, from small to enormous, with maximum efficiency, eliminating wasted time and unnecessary manpower.

Metform International Ltd

Booth S2331
Versa Frame Roll Former



The Versa Frame Roll Former is blank fed, offers 60 FPM Line speed, 16 to 22 gauge, unequal or equal rabbet, both drywall and masonry profiles, adjustable width, min throat opening 3/4" and max throat opening 8 3/4".

Schwarze-Robitec GmbH

Booth N8103
Cutting Tool



Schwarze-Robitec GmbH offers an accessory for efficient production processes. Its innovative cutting system reduces the tube waste by up to 90% and shortens the production times considerably. The tool requires only one work step to complete the bending and separation process.

Sertom SpA

Booth S2293
Dishing and Flanging Machines



Sertom dishing and flanging lines offer a complete solution for producing tank heads. Sertom flanging and dishing machines are the right solution for small and high production with tank heads from gage material up to 2 inches thick and 26FT diameter.

Shaoxing Inbon Machinery Co LTD

Booth C939
Door Frame Roll Forming Line



This line consists of a decoiler, servo feeder, multi-stage press, roll forming machine, and flying shear. It can continuously run a product at a speed of 25m/min max. with an excellent accuracy at ± 0.5 mm cut-off length.

Tube Form Solutions

Booth N2033
Herber 350RL



The 350 RL is an all-electric, left and right hand bender.

Unison Ltd

Booth N2055
Breeze 4" Multi-Stack, Multi-Radius, CNC Tube Bending Machine



Re-designed 4" tube bender, enhanced with the latest in Unison control features. Additional new tool storage options and loaded with Unisons powerful laser measurement system for bend angle spring-back correction.

Wemo International B V

Booth C1315
WEBEND PRO



This WEBEND PRO is a cutting-edge fully electric solution for companies aiming to maintain the highest level of productivity and efficiency. It enables fast return on investment, flexibility and optimum accessibility.

Brazing & Soldering

Fusion Inc

Booth N23042
Braze Mate 100 LS



The Braze Mate 100LS is designed for medium volume applications. The two station machine offers automatic, timed heat control, with multiple torches attached to a retractable arm. Rates from 40-70 parts per hour are typical.

Harris Products Group

Booth N11015
Eco Smart™ Color Change Paste Brazing Flux



Eco Smart™ Boric Acid-free paste brazing flux is the world's first smart flux, designed with color change technology that indicates when it's time to braze on steel, stainless, Monel®, nickel, copper, brass, bronze and other alloys.

Business Services

American Welding Society

Booth N15000
AWS Online Educational Library



AWS has launched the very first Online Educational Library geared specifically to the needs of welding students and educators. Whether a welding instructor or a business owner with employees to train, the AWS Online Educational Library can help surmount the seemingly inherent obstacles of teaching. With comprehensive and engaging courses, a convenient learning management system, and a cost-savings of up to 70%, the AWS Online Educational Library is a must-have for all training institutions and businesses.

Atlal Software

Booth S4848
Quotebooks



Quotebooks is an innovative quote and CRM solution for successful salespeople who need a tool to keep up with their pace.

DOT Quality Services

Booth S2221
ISO 3834 Certification



The ISO 3834, quality requirements for welding, demonstrates the capability of a manufacturer to meet quality requirements. Get ISO 3834 Certified to sell your products worldwide.

Fabricators & Manufacturers Association
 Booth N13000
FMA Connect Mobile App
 FMA's mobile app is now available for iPhone® and iPad® as well as Android™ devices. Use FMA Connect to search the member directory, manage your profile, view upcoming event details, and more.

SME
 Booth N11000
Lean Epiphanies: Catapult the Cow



A recipient of the Shingo Research and Professional Publication Award, Gary Conner shares his insights into human nature, company culture, and leadership gathered from his experiences in teaching others about lean and the pursuit of operational excellence. The lean journey is rife with speed bumps, detours, and roadblocks. Lean Epiphanies will give you encouragement, inspiration, and motivation to stay the course.

Coil Processing
Allor Manufacturing Inc/ Plesh Industries
 Booth S4191
Allor-Plesh Precision Tapered Backup Bearings



Tapered Backup Bearings give direct interchange 2.5" - 12". All of our bearings are sealed or shielded for life, and are heat-treated using bearing-quality steel. Our attention to detail gives you increased performance for all of your backup bearing needs.

ANDRITZ Herr-Voss Stamco Inc
 Booth S2761
Level Vision™



ANDRITZ Herr-Voss Stamco introduces Level Vision™, a closed-loop flatness measurement system, creating leveling systems that are automatically controlled.

Bradbury Group, The
 Booth S3531
e•Drive®



Bradbury has been awarded Patent #8893537 for the advanced e•Drive® roller leveling technology.

COE Press Equipment
 Booth S4722
Work Roll Advisor for Straightener Setup



COE's Work Roll Advisor automatically calculates and sets roll depth. Users enter material specs - thickness, width and yield strength - and recommended straightener roll depth settings are automatically calculated. Also has work roll compensation.

FIMI Spa
 Booth S3545
Robotic Slitter Head And Separator Tooling Set-Up



Robotic set up of Slitter Head & Separator Tooling offers increased line productivity.

Oriimec Corporation of America
 Booth C533
LCC KR3 Feed Line



LCC KR3 Feed Line can handle material up to 400 mm wide and 3.2 mm thick. Fully integrated controller.

Speed Matters

DE-STA-CO Introduces the newest addition to its line of stamping press sheet metal gripping solutions.

The Accelerate® Press Room Sheet Metal Gripper is:

- Compact and powerful** (grip force up to 1000N at 5 bar)
- 60% lighter** (0.27kg vs 0.56kg)
- 12% smaller** foot print
- 60% faster** actuation (33ms vs 50ms)
- 100% DE-STA-CO** innovation

Visit our booth #N2061

Want more information, visit our website to learn more

destaco.com



Cutting

Ajan Elektronik Servis Sanayi Ve Ticaret Ltd St

Booth S1774
CNC Plasma Cutting Machine



Combined CNC Plasma Cutting Machine, 2000 x 4000 (6x13).

Allied Machine & Engineering Corp

Booth S1958
Structural Steel GEN3SYS® XT Drilling System



A combination of a unique holder and insert designed specifically for the machines, material and environment commonly found in the Structural Steel Industry.

American Photonics

Booth S2150
Patented Half Collimator 3 in 1 Beam Combiner



APC's new Double Laser Alignment System used with a system integrated

beam combiner eliminates the need to burn spots with your Co2 laser. Improving safety and reducing many alignment challenges.

ARNTZ Inc

Booth C415
TAIFUN Bi-Metal Band Saw



Precision borazon-ground Bi-Metal tooth tips for a wide range of materials.

Bic Tool Co Ltd

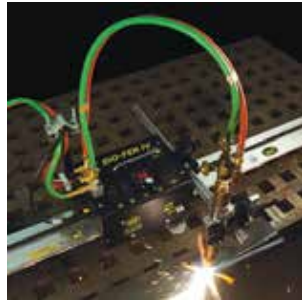
Booth C516
Gekkou Cobalt Drill Bits



Revolutionary and patented cobalt drill bits from Japan.

BUG-O Systems Inc

Booth N8013
Go-fer IV - Three Models in One



The 4th Generation Go-fer IV from Bug-O Systems combines built-in features for welding, oxy-fuel and plasma cutting all in one housing. Built in dual contactors, gas manifold and cable anchor are all standard. Made in the USA and backed by a 3-year warranty.

Fein Power Tools Inc

Booth N26025
WSG15-150PR ErgoGrip Angle Grinder



The WSG15-150PR ErgoGrip is a 6 In. angle grinder with an ergonomic handle to reduce fatigue while increasing efficiency. As part of the Power series, it offers 1500 watts of power and a soft start with restart and jam protection for increased safety.

Hypertherm Inc

Booth S3340
Powermax30® AIR



The Powermax30 AIR, a portable air plasma system and internal compressor, operates on both 120 or 240 volt power. Weighing only 30 pounds, it provides 30 amps of output, giving it the highest power to weight ratio of any system in its class.

Iturraspe / ITUX

Booth C842
Anti-twist system for shears



Introducing the Anti-Twist System for shears, allowing users to cut narrow strips without distortion. Available as an option on all Iturraspe/ITUX models.

Joysun Abrasives Co Ltd

Booth N20068
Ceramic Alumina Flap Discs



Joysun has built up a series of Hybrid ceramic alumina & Zirconia alumina

flap discs by the trimmable plastic backing plate turbo-fan cooling shape and threaded arbor in 5/8"-11.

Koike Aronson Inc

Booth N8008
KARMAC



KARMAC uses touch technology to give operators an efficient control for plasma, gas, and other cutting systems. It has CAD import, library of 50+ shapes, and productivity monitoring. The screen and components are designed to work in harsh environments.

Morris Engineering Works Ltd

Booth N15086
VHF-211 and VMF-221



Our new style torch handle of VHF-211 and VMF-221 for Heavy Duty and Medium Duty converts torch handles into highly efficient cutting tools by installing built-in flashback arrestor and reverse flow check valves.

Norton | Saint-Gobain

Booth N24064
Norton Gemini RightCut



Praxair Inc introduces its general purpose cut-off wheels. The 100% aluminum oxide abrasive has been infused with a new bond technology and processing for a thinner wheel design and low kerf loss.

Praxair Inc

Booth N14049
PRS900 Robotic Welding System



Praxair's ProStar PRS900 Robotic Cutting System cuts all four faces on 3D profiles, employs multiple bays for the continuous cutting of plate or domes and beam, tubing or bulbs and frees up shop floor space.

Soitaab USA Inc

Booth C512
Plasma RED Bevel



The new plug and play CNC Soitaab Plasma cutting machine will be equipped with a compact bevel head for welding preparation. The new head features endless rotation and is entirely designed and made by Soitaab.

The M K Morse Company

Booth S3579
Carbide Tipped Hole Cutter



The carbide tipped hole cutters have precision ground gullets and teeth,

providing fast, burr free holes in a multitude of applications. Primarily used for metal cutting, the wear-resistant carbide teeth also cut abrasive plastics and fiberglass.

Haeger Inc

Booth.... S1908
618MSPe & 824MSPe

Multi-station plus machines in 6 ton and 8 ton versions.



HBS Studwelding Inc

Booth N9094
Pegasar 500 accu



The Pegasar 500 accu from HBS is a mega powerhouse, new to the stud welding industry and offers a previously unknown dimension of mobility and flexibility in stud welding.

JHP Fasteners Inc

Booth S2345
KingSet™ Semi-Automatic Riveting Tool



The KingSet™ is a semi-automatic, blind rivet installation tool. It installs 1/8" & 5/32" rivets (3/16" coming soon) with a cycle time of only 2 seconds and magazine reload time of 8-10 seconds. KingSet is ideal for medium & high volume production.

Master Magnetics

Booth S4153
41-Inch Magnetic Retrieving Batons



Master Magnetics' 41-inch Magnetic Retrieving Batons are innovative, powerful tools for removing fine metallic filings, turnings or shavings (swarf) created by cutting tools and machinery in wet or dry environments.

Fastening & Joining

Zipp Air Tool Company

Booth C1224
Zipp Rivet Nut Tools ZRN1606E & ZRN2508E



The ZRN1606E features 3500 Lb pulling capacity, and the ZRN2508E features 5500 Lb pulling capacity. Nut tools cover sizes 8-32 through 1/2-13 or M4 through M12.

INNOVATION

Visit S4734 to learn about our new SpaceMaster 4 compact coil line, which can process high yield materials at 70-80 SPM.

Don't settle for less than EVERYTHING

Coil processing equipment is what we build, but what we deliver is much more. Quality solutions backed by comprehensive service and training. Innovative engineering and skilled craftsmanship with dedication to detail.

COE Press Equipment delivers everything you need to improve your coil feeding operations. Learn more at...

www.COEpress.com/everything

See us in booths S4722 & S4734

COE
 COE Press Equipment

+1 (586) 979-4400 | info@COEpress.com | www.COEpress.com

Finishing

3M

Booth N26006
**Aluminum Solutions System
 from 3M**



Introducing the latest aluminum solutions from 3M. With a complete selection of abrasive products and tools, you'll have the most advanced equipment to make a professional finish on aluminum and other soft metals each and every time.

Abtex Corp

Booth C828
**Turnamat Tube and Pipe
 Deburring System**



The Abtex Turnamat quickly and powerfully brushes away end burrs on steel, stainless, aluminum and non-ferrous metal tubes and pipes, leaving you a clean edge and an extra measure of precision and safety.

AFC Finishing Systems

Booth S4845
**Airflex Sweeper Abrasive
 Recovery Floor**



The Airflex sweeper floor is a fully automated abrasive recovery system used in blast rooms, which requires little civil works and features virtually silent operation, energy efficiency and reliable service.

ARKU Coil Systems Inc

Booth S508
EdgeBreaker®



The EdgeBreaker® is a new deburring machine in ARKU's product line. For fast and efficient two-side deburring and rounding. The EdgeBreaker® removes burrs and rounds edges on stamped, laser-cut, plasma-cut and flame-cut parts.

Blast Cleaning Technologies

Booth S5376
**BCT Multi Function Blast
 Cleaning Cell**



The BCT is a 4 wheel continuous flow spinner hanger blast system, utilizing three independent powered trolleys providing travel for dual hoists.

Calvary Industries Inc

Booth S5512
ADVANTECH P690
 ADVANTECH P690 represents a new era in zirconium pretreatment, offering superior corrosion resistance both painted and unpainted.

Caplugs

Booth S5055
Pipe Thread Masks



Caplugs silicone Pipe Thread Masks (PTM series) protect threads on piping and tubing during pipe fabrication and secondary coating processes. Designed with a tear-away venting nipple, the cap-plug allows for pressure release during curing.

Chemco Manufacturing Company Inc

Booth S5685
**All Surface Strippable Spray
 Booth Coatings**

Bright White Strippable-Peelable Spray Booth Coating. Suitable for porous and unsmooth surfaces. Can be shipped frozen during winter months. Water-based formula.

Chemetall US Inc

Booth S5576
Gardobond® AP 9840



Gardobond® AP 9840 is a 3-stage non-phosphorus cleaner and pretreatment replacing detergent iron phosphates.

Chemical Coaters Assoc Int'l

Booth S5133
**Training Manual — System
 Design for Industrial Finishing
 Applications**



CCAI's System Design for Industrial Finishing Applications is a training manual that provides innovative and updated information on all the essential factors for setting up and running an efficient finishing system.

Cibo nv

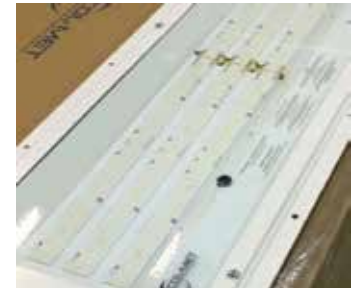
Booth C1705
Unitized



Unitized is the missing link between grinding and high-gloss polishing of stainless steel. The flexible material also adapts perfectly to the shape of the workpiece and allows users to grind away scratches or minor damage from the workpiece.

Col-Met Engineered Finishing Solutions

Booth S5531
LED Lighting



Col-Met's LED lights offer many advantages to fluorescent lamps such as improved durability, a longer life span, lower energy usage, and reduced maintenance costs. Upgrading to LED is also easy without having to change any existing light fixtures.

ElektroPhysik USA Inc

Booth S5641
**SmarTest Mobil App for coating
 thickness testing..**



The SmarTest App by ElektroPhysik and SmartTest Bluetooth Adaptor turns your smartphone or tablet into a coating thickness testing gauge.

Ensitech

Booth N28070
TIG Brush TBE-550



Ensitech's latest innovation, the TIG Brush TBE-550 Stainless Steel Surface Finishing System, uses a unique combination of electricity, heat and chemistry to deliver superior results in weld cleaning, passivation, polishing, marking and etching.

Gema USA Inc

Booth S5356
OptiCenter OC04/05 Powder Center



Gema's OptiCenter® OC04/05 powder center, with its optimized hopper volume of up to 60 liters and usability with up to 30 guns, is designed for a broad range of customers.

Graco Inc

Booth S5352
Graco Endura-Flo Diaphragm Pump



This 4:1 diaphragm pump is the ideal solution for multiple color change and piggable systems. It requires very little solvent to flush, offers consistent start up pressure and surprisingly high pressures and flow rates for a small, compact pump.

Hubbard-Hall Inc

Booth S4940
Emerald Paint-Prep 380 NP



This zirconium conversion coating is formulated for treating steel, zinc and aluminum surfaces in multistage spray systems. Replace traditional iron phosphate with this product and reduce energy costs & reduce contact times by 50%.

Intek Corporation

Booth S5570
OM (Oven Modular) Heaters



Intek Corporation introduces its patented OM (Oven Modular) electric infrared heaters and custom oven systems. Modular heater design allows maximum flexibility in any oven application as well as superior ease of installation.

KLINGSPOR Abrasives Inc

Booth C1625
CMT Quick Change Flap Discs



The KLINGSPOR CMT Flap Disc is a quick-change flap disc that is an efficient, effective, and innovative version of KLINGSPOR's industry-leading flap discs.

Lissmac Corp

Booth S3973
SBM-XS and SMW 123



LISSMAC is proud to present its machines for deburring and finishing.

SCRAPE AND BURR

WITH DUALAST® EDGE TECHNOLOGY

scrapenburr.com

MADE IN USA

INDUSTRIAL SCRAPER

IT'S THE BLADE

A HEAVY-DUTY SCRAPER SPECIALLY DESIGNED FOR CLEANING OPERATIONS IN THE HARSH WORLD OF WELDING AND METAL FABRICATION.

REPLACEABLE BLADES

| | |
|---|--|
| <p>REMOVES WELD SPATTER SLAG/DROSS</p> <p>REAMS WELDING TORCH NOZZLES</p> | <p>DE-BURRS SHARP CORNERS & SAWED EDGES</p> <p>BLADES ARE EASILY SHARPENED</p> |
|---|--|

See us in booth N9084

DUALAST
EDGE TECHNOLOGY

RNB-15
1-1/2" Replacement Blade

RNB-30
3" Replacement Blade

RNB-45
4-1/2" Replacement Blade

Manufactured by Innovative Product Ideas, LLC | Neenah, WI 54956 | Toll Free: 866.895.1531 | www.scrapenburr.com

Finishing

**Magic Rack/
Production Plus Corp**

Booth S5038
Transport Carts



Magic Rack/Production Plus Corp offers transport carts for mobility of racks and parts throughout the plant or paint shop. Designed to specific needs, both light or heavy duty parts up to 600 pounds. For use with powder coating, e-coating, wet spray or submersion.

Midwest Automation

Booth S3552
Nautilus3 (Wet) to Deburr, Finish & Edge Radius



Economically deburr/finish/edge-radius parts fabricated from sheet metal or steel plate. Rugged split frame and 4 post design for demanding applications. Available in 3 and 4 head belt/brush configurations, and 37" and 52" wide models. Made in USA.

Nordson Corp

Booth S5324
Encore HD Mobile Spray System



Using high-density powder, low velocity spray technology, achieve a highly dense phase spray, a more diluted mixture or anything in between. Get greater transfer efficiency, less overspray and better cured finish quality for every conceivable part type.

PEM Inc

Booth S5160
SprayMate



PEM, Inc. introduces its Spray-Mate. The stainless steel cabinet washer can be connected to an existing spray wand unit and all of PEM's manual spray wand units for small batch cleaning.

Praxair Inc

Booth N14049
ProStar Smart Chemicals



Praxair's ProStar Smart Chemicals pickle and passivate stainless steel without hydrofluoric acid and remove rust, paint and coatings.

**Rhodes Systems
International Inc**

Booth S5511
Rhodes Highline



RSI offers its Overhead Conveyor System, the Rhodes Highline for all weight requirements.

**Rosler Metal
Finishing USA LLC**

Booth S3592
Roller Conveyor Shot
Blast Machine



Rosler's RRB Roller Conveyor shot blast systems are perfect for descaling, rust/paint removal, and general cleaning. RRB machines are sized to handle metal sheets, pipes/tubes, I-beams, channels and angles.

**Specialty Metals
Processing Inc**

Booth S5688
Expanded Polishing Services



SMP offers polishing/grinding services on non-ferrous materials directly to fabricators/end users. Materials include most grades of special metals in sheet, plate, and coil form. No order is too small or too large.

**Suhner Industrial
Products Inc**

Booth S5007
Suhner Cordless Grinders



Suhner introduces its line of cordless grinders. Offering a straight grinder, belt grinder, fillet weld grinder, and tube polisher, Suhner's durable cordless tools pack a serious punch.

Vapor Technologies

Booth S5670
VT-3000



Vapor Tech's LTAVD (Low Temperature Arc Vapor Deposition™) technology delivers superior surface performance, appeal, and long-term durability in proven systems built for finishing the best products on the market.

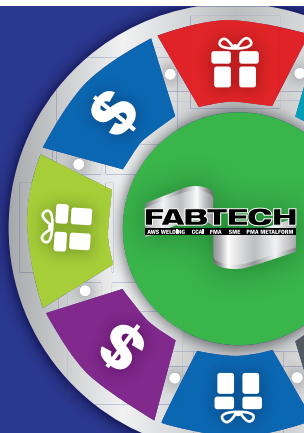
**SPIN TO WIN
Hall C, Booth C1344**

Stop by and spin the wheel for a chance to win cash and prizes!

**November 9-12, 2015
McCormick Place, Chicago**

Hours of Operation:

Monday 11:00 AM – 6:00 PM
Tuesday 10:00 AM – 5:00 PM
Wednesday 10:00 AM – 5:00 PM
Thursday 11:00 AM – 3:00 PM



Gases & Gas Equipment

Chart Inc

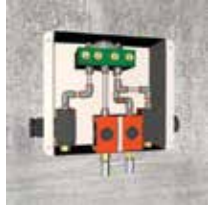
Booth N24061
Perma-Cyl® 5500 VHP



The Perma-Cyl® 5500 VHP MicroBulk Storage System is designed for configuration to any LIN, LAR, or LOX gas application and engineered to supply up to 5000 SCFH at 450 psig delivery pressure.

McDantim Inc

Booth N24047
Trumix® TM2B450



McDantim Inc offers the TM2B450, which provides two different blends of a two-component mixture. The TM2B450 can deliver 450 scfh of both blends at the same time and maintain +/- 10% accuracy.

Ratermann Mfg Inc

Booth N22094
5000L Arctic Fox Cryogenic Tank



The 5000L Arctic Fox Cryogenic Tank comes standard with advanced features. Designed w/ quality & longevity in mind. It can be filled by a standard micro bulk truck or conventional tanker truck. Offers resilient Herose dual thermal relief, top & bottom filling and oversized piping for fast filling.

Hydroforming

Interlaken Technology

Booth S4017
High-Volume Production Hydroforming Press System



Interlaken Technology introduces its four-column hydroforming press system for running high-volume production while reducing cycle time.

FABTECH EDUCATION PROGRAM

North America's largest metal forming, fabricating, welding and finishing event, offers an array of educational programs to enhance your career or business! With 100+ targeted technical, operational, economic and managerial sessions, you'll discover the solutions you need to advance your career and your business. Network with peers, learn from top industry experts, exchange best practices and explore the latest technology and advancements in the industry.

Find session details and registration at fabtechexpo.com/edu.



siegmund

**NEW PROFESSIONAL
EXTREME 750 TABLES!**

Constructed from premium through hardened steel with a Plasma Nitride treatment for a double hardened table that will last a lifetime!

**FABRICATE ACCURATELY
WITH HIGH PRECISION
SIEGMUND WELDING TABLES**

Superior quality tables with an extremely flat and rigid five face fixturing surface.

- Made in Germany
- Stocked in U.S.A.



Visit us at Booth# N26022

StrongHandTools

sales@stronghandtools.com
www.stronghandtools.com



Inspection & Testing

data M Sheet Metal Solutions GmbH

Booth S2341
COPRA® ProfileScan Desktop



The innovative COPRA® ProfileScan Desktop is the ideal device for quality management of rolls formed profiles. By contactless and non-destructive measurement it is particularly cost-effective and able to measure the whole visible cross section.

DeFelsko Corp

Booth S4837
PosiTector SmartLink



The PosiTector SmartLink turns a cell phone into a multi-functional inspection instrument. Wirelessly connect thickness, surface profile and environmental probes to take advantage of the utility of a smart device including microphone and camera.

Fischer Technology Inc

Booth S5667
FISCHERSCOPE® X-RAY XAN® 500



Handheld X-ray fluorescence measuring instrument for fast and non-destructive material analysis and coating thickness measurement.

Fluke Corporation

Booth C520
TiX560 Infrared Camera



The largest 5.7in touchscreen LCD for a 320x240 IR camera, easy target navigation with a 180° rotating lens & LaserSharp® Auto Focus lets a user instantly capture an in-focus image.

Gowin Checking Fixture Manufacturer Co Ltd

Booth S4855
Automatic Welding Jig



Gowin Checking Fixture Manufacturer Co Ltd offers a fixture that is a work-holding or support device used in the manufacturing industry.

Innerspec Technologies

Booth N2072
PowerUT® TG-IL



Innerspec Technologies offers its In-line thickness measurement with Dry-Coupled UT (DCUT) for maximum resolution and accuracy on metallic and non-metallic parts.

Oasis Scientific Inc

Booth S3203
Vividia VA-800 USB Flexible Articulating Borescope



The VA-800 USB digital articulating borescope videoscope has a 31.5-inch long flexible cable, 180° degree articulating camera head, high quality image. It can be used to inspect engines, instruments and equipment, for repairs and maintenance.

Olympus

Booth N22052
Weld Inspection Solutions



Olympus, introduces its phased array ultrasound solution developed to increase the efficiency of weld inspections for use with the OmniScan phased array flaw detector.

Realityworks

Booth C1519
RealCareer® Welding Solutions Weld Defects Kit



Educate welders how to identify and correct common weld defects and discontinuities with the RealCareer® Welding Solutions Weld Defects Kit, a portable set of weld defect models.

Starrett Company

Booth S4714
SR160



Starrett introduces its SR160 surface roughness tester.

Vitronic Machine Vision

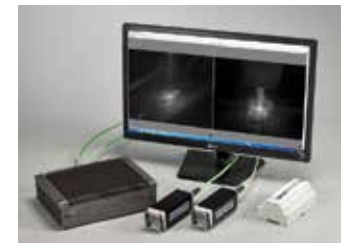
Booth N28022
Weld Seam Inspection System VIRO wsi



The automated, reliable weld seam inspection system VIRO wsi impresses with a new user interface. The software was given a complete overhaul, and its new design is geared towards ensuring intuitiveness and usability.

Xiris Automation Inc

Booth N23022
XVC-1000e Weld Camera



A powerful imaging tool used for remote guidance and process monitoring for open arc processes. Easily integrated into new/existing equipment, with auxiliary lighting, remote motorized lens and weld specific software with full recording capability.

ON-SITE GAS BLENDERS

A WIDE RANGE OF MODELS TO FIT YOUR NEEDS...



- 2 or 3 Component Gas Blends
- 2 Blend Models Available
- Flow Rates from 150 to 4000 scfh
- Wall or Floor Mount Systems
- Custom Models
- No Electricity or Storage Tanks Required



Booth # N24047



888.735.5607 • www.mcdantim.com

Job Shop/Contract Manufacturing

Ohio Laser LLC

Booth S2305
Ohio Laser Adds Trumpf 3030 Fiber Laser Capability



With six Trumpf tube & pipe laser machines, assorted Trumpf flat plate lasers and the new Trumpf 3030 4 KW Fiber Laser, Ohio Laser offers an expanded contract manufacturing capability for cutting parts and fabricating assemblies.

Sharpe Products

Booth N1032
Custom Bending Capabilities & Services



Sharpe Products offers the capabilities to meet tube bending needs. Equipped to bend tube and pipe up to 6" O.D. Sharpe continues to be in the forefront of tube bending technology by utilizing lean and green all-electric CNC benders.

Fiber Optic Tube Laser Cutting Services



Our state-of-the-art 3,000 watt BLM Fiber Optic Tube Laser has unique cutting capabilities and increased production speed versus traditional CO2 tube lasers. This tube laser can handle pipe or tube up to 6" O.D. and 4" square.

Lasers

Amada America Inc

Booth S901
C1 AJ — Punch/
Fiber Laser Combination



The LC 2515 C1 AJ is a punch/fiber laser combination machine equipped with a Multi-Purpose Turret (MPT) and automated material handling to ensure maximum productivity while reducing secondary operations.

ENSIS 3015 AJ — Fiber Laser + Automation



Leveraging a highly innovative resonator, the ENSIS 3015 AJ is a 2kW fiber laser cutting system that provides 4kW cutting capabilities.

Blackbird Robotics North America

Booth N19097
intelliWELD II



The intelliWELD family now includes the intelliWELD II with integrated zoom axis with its variable spot size enabling flexible seam widths. intelliWELD II FT (with F-Theta objective), optimized for overlap welding.

Bystronic Inc

Booth S919
BySprint with
Fiber 6000 Laser Source



The Bystronic BySprint with Fiber 6000 Laser source increases parts output by up to 400%.

Ermaksan Mak. San ve Tic. AS

Booth S2940
FIBERMAK
MOMENTUM GEN-3 (Pro)



High acceleration of 2,5G on Servo Motorized models by Momentum Gen-3 PRO version is available. Productivity increased average 15% per hour by higher acceleration & consequently the speed. Software & automation developed by Ermaksan.

Gravotech Inc

Booth S3216
LS1000XP by Gravograph



Outstanding speeds of 157 inches/second and marking area of 48" x 24" this laser outperforms the rest. The LaserStyle software solution allows cutting of precisely printed shapes with no added expense of an optical recognition device.

Han's Laser / Gromax Enterprises Corp

Booth C120
Laser Marker G20



HAN'S Laser Marker Series Laser engraving/marketing is the process of using lasers to engrave or etch an object. The technique does not involve the use of inks, or tool bits which contact the engraving surfaces and cause mechanical extrusion or stress.

Han's Laser Technology Industry Group Co Ltd

Booth C1118
G3015F-IPG4000
Laser Cutting System



Over 2000 sets of the Fiber Laser cutting system G3015F have been installed. The G3015F-IPG4000 can be extended up to size 5M - 50M, and be equipped with power from 1KW to 6KW.

HK Laser & Systems

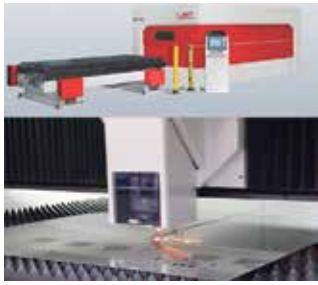
Booth S956
Xcaliber Fiber Laser



HK Laser & Systems introduces its fiber laser cutting system, the Xcaliber, available in 3kw, 4kw, and 6kw models.

JMT USA

Booth S3114

JMT Fiber Laser

JMT's solid state fiber laser cutting system features a sealed Procutter head, Lantek software and an automated material handling system. Pipe cutting models available. System is 30% more cost efficient than CO2.

KKT chillersBooth S2343
vboxX

The Vario-Line comprises eight new chillers that automatically adapt their cooling capacity to the respective application at any given time, making them particularly precise and economic.

Laser Mechanisms IncBooth S3312
Real-Time Direct Penetration Monitoring

Laser Mechanisms' FiberWELD® processing head, through the use of patented inline coherent imaging (ICI) technology, features real-time direct penetration monitoring for precise depth measurement of industrial laser processes.

Lasercoil Technologies LLC

Booth S4584

Dual Head, Coil-Fed Laser Blanking System

Dual head, coil-fed laser cutting system shares workload. Decreases processing time and improves production up to 85%. Handles complex body side outers to simple chevron, scroll cuts. Processes material 0.5 to 3.5mm thick, up to 2m wide coil, any length.

LVD Strippit

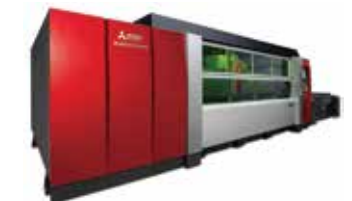
Booth S938

Flexible Automation-Laser (FA-L)

LVD Strippit offers its FA-L, is the latest in laser cutting automation, designed for flexibility and speed.

Mazak Optonics CorpBooth S3101
OPTIPLEX NEXUS 3015 Fiber

The OPTIPLEX NEXUS 3015 Fiber combines cutting-edge laser technology with an economical investment.

MC Machinery Systems IncBooth S1719
eX-F Series Fiber Laser

The Mitsubishi eX-F Series fiber laser combines the best of both worlds: the top notch construction of the popular eX CO2 laser and the power of a fiber resonator. The eX-F is an especially powerful fiber solution for thick-plate processing.

nLIGHT Corp

Booth C1024

1000W Fiber Laser

nLIGHT, a U.S. based provider of industrial laser products, announces its addition to its fiber laser portfolio. With improved welding performance, back reflection immunity and design for service, nLIGHT alta™ is the next generation of fiber lasers.

Preco IncBooth C416
WebProM

Preco, Inc. introduces the WebProM laser system, a high speed laser based galvo with coil feed. Laser options include: CO2, fiber, nanosecond, picosecond and femtosecond technologies.

REA Elektronik IncBooth N4083
JET Fiber Laser

The REA JET Fiber Laser designed for direct marking of metal & plastics. Flexible & reliable, the FL is consumable-free, low-maintenance. The high resolution print provides machine-readable codes & high traceability of products.

Richardson Electronics, Ltd.

Booth S2024

Round Bellows for CO2 Lasers

Richardson Electronics offers its round bellows for state-of-the-art CO2 lasers. The patented design allows for peak performance on high speed lasers. These bellows are suitable for use in laser machines from Bystronic® and Trumpf®.

The RDI GroupBooth S2189
Coil Fed Laser Blanking

RDI's Coil-Fed Laser Blanking System provides manufacturers with an opportunity to substantially increase productivity and reduce costs by combining continuous coil feeding of strip material into a high-speed, extremely accurate laser cutting system.

TRUMPF IncBooth S1701
TruLaser 2030 fiber with LiftMaster Shuttle

TRUMPF's TruLaser 2030 fiber offers flexible and economic 2D laser cutting across a variety of materials and thicknesses and is now available either with the LiftMaster Shuttle for complete lights-out production.

Lasers

Virtek Vision International
Booth S3406
Virtek Iris Spatial Positioning System



The Iris™ Spatial Positioning System guides workers through the assembly process by locating hardware in 3D space, quickly locking onto CAD datum references and employing lasers to project exact placement positions on the work piece.

Lubrication

Kent Corp
Booth N2041
DieTronic ANTIRUST Lubrication System



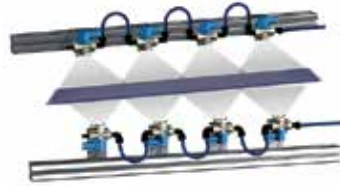
The innovative LCP Antirust machine enables in-line application of protective oil onto the surface of pipes & profiles.

Metalloid Corp
Booth N1035
Microlubrication System for Tube Bending



Mandrel lubrication for tube bending is achieved by lubrication through the mandrel rod via a microlubrication system.

technotrans Group
Booth N3091
spray.xact Lubrication System



A flexible, adaptable solution for a precise, non-contact application of oils and watery solutions on to board or coils. The spray jet uses a high-frequency pulsing valve with a 1-substance nozzle. This eliminates the use of cost-intensive compressed air.

Unist Inc
Booth S4412
Coolube® 2210AL



The Unist Coolube® 2210AL is formulated for use on aluminum, derived from natural vegetable oils and contains no VOC's. It provides exceptional lubricity, helps improve tool life, is nearly odorless and does not cause skin, eye, or throat irritation.

Machining/EDM

DCM Tech Inc
Booth S3508
IG380SD Rotary Surface Grinder



The IG380SD is a 36-inch diameter electro-magnetic chuck with 30 Hp. The grinder features a grinding motor and conversational programming that is easy to use / operator friendly. Safety interlocked and enclosed grinding area. Down feed resolution to .0001 inches. Accommodates multiple types of abrasives.

Maintenance & Repair

Continental Carbonic Products
Booth N13094
IceTech Elite 20 3/4" Dry Ice Blasting Machine



The Elite 20 3/4" dry ice blasting machine is perfect for weld cell cleaning by reducing scrap rates and saving labor costs. The powerful Elite 20 dry ice blasting machine boasts adjustable dry ice consumption and a stainless steel design.

FORMITALY
Booth S4778
Die-Splitter



Formitaly's division Attrezzeria Universal, with its extensive die experience, developed the die-splitter technology. The machine will clutch and turn, open the die and reclose it after maintenance is done.

In.Motion Technology Distribution
Booth N25011
Rotary Milling Disc



In.Motion Technology Distribution offers its Rotary Milling Disc, providing improved productivity and quality of weld preparation and repair operations for Aluminum industrial applications.

Oerlikon Balzers Coating USA Inc
Booth C837
BALINIT DUPLEX



BALINIT DUPLEX offers a ground-breaking combination of nitriding and BALINIT PVD

coatings. Heavy-use forming tools must be able to withstand extreme loads and at the same time be productive and efficient while remaining process reliable for manufacturing.

Material Handling/ Marking

Design Storage & Handling Inc
Booth N1009
Four Directional Electric Sideloader



Design Storage & Handling Inc introduces its Hubtex four-directional electric sideloader-MSU55, series 2240 V2. It boasts the lowest step-in height in the industry and is a very narrow aisle, four-wheel, four-directional sideloader.

Ergotech Inc
Booth S2233
ErgoChief Rotary Work Positioner



The Ergo Chief® motorized bi-directional rotary work positioner from Ergotech can securely position any object of any size or shape up to 400 lbs. for any

work project, and is suitable for welding, assembly, and other industrial applications.

FIPA Inc

Booth C911
FIPALIFT Lifting Technology



FIPALIFT is a lifting solution for the movement of light to heavy loads. The intelligent vacuum technology breaks new ground with material flow.

LA-CO Industries/Markal

Booth N24002
DURA-INK® 5



The DURA-INK® 5 is a permanent ink marker that uses an extended micro tip for precision

marking needs and is ideal to use through drill holes, mounting brackets, or in any hard to reach area.

RIMCO Rotator

Booth N21092
R24, R48 & R80



Rotator Industries now offer stronger, safer, more efficient options for holding and turning steel. Three new models allow for 10T load limit and optional robotics. Rimco Rotators can help lower overheads, produce beams faster and make your factory safer.

SKM Industries Inc

Booth N9108
Super Met-al Mini Keychain Paint Marker



The Super Met-al Mini Keychain Pain Marker offers bright, and fade-resistant markings. Can be used in warehouses,

machine shops, welding, plumbing and with marble/granite fabrication.

Welker Engineered Products

Booth N28054
PCZ Pin Clamp



Welker Engineered Products offers its line of compact pin clamps for positive part location and clamping. Ideal for flanged holes, end effector applications, and material handling.

Other Machinery/Equipment/Parts/Products

Alfra USA LLC

Booth S2179
TMC Switchable Magnetic Tools



Alfra has partnered with Maglogix to develop a family of the world's

most powerful lifting and workholding tools based on newly patented magnetic technology. Lighter, stronger and the best on thin metals of any sold today. Made in Germany By Alfra.

Alro Steel Corporation

Booth S4989
Super Square



Precision milled Super Square offers better utilization of skilled labor, machine time and overall productivity.



JUMP START YOUR CNC PUNCHING

MetaCAM Software, Expert Solution For Automated Punch Programming

Auto-Tool, Auto-Sequence, Auto-Nest Your Way
 With Smart Punching Parameters:

- > Extensive Tool Selection Features
- > Customizable Sequencing Options
- > In Depth features for Forming Tools
- > Special Tool Creation and Recognition
- > Die Checking and Management
- > Tool Load Creation and management



Punch Specific Nesting Features:

- > Automatic Tool Assignment Conflict Resolution
- > Automatically Schedule Nests for Minimal Tool Setup

**MULTIPLE CHALLENGES
 ONE CAD/CAM SOLUTION**

PRODUCTION CONTROL



PRESSBRAKE LASER PLASMA PUNCH WATERJET NESTING



Leading the Industry in Innovative CAD/CAM Software

1465 Terminal Way, Suite #2, Reno, Nevada 89502 | 480 Lively Blvd., Elk Grove Village, IL 60007
 T (775) 826-1717 | F (775) 826-1723 | www.metamotion.com | sales@metamotion.com

Other Machinery/ Equipment/Parts/ Products

Big Ass Solutions

Booth S4179
Black Jack



Black Jack is a 6.5-foot portable fan that produces enough airflow to be felt 120 feet away. Bringing comfort to tight corners and hard-to-reach workstations, Black Jack is a versatile air movement solution for any industrial facility.

Box On Demand

Booth S3404
Compact 1.4
Box Making Machine



The Compact 1.4 is designed for customers needing a scalable, small-footprint box making platform. Multiple-box output, hundreds of box styles, and multiple feed inputs are standard on the platform, which features the latest in high speed cutting heads.

Burghardt + Schmidt GmbH

Booth S2177
EP300 Burr
Height Measuring System



The burr height measuring system offers quick and easy measuring of slitting samples with a maximum length of 250mm (9.85") or 1350mm (53.15") and determination of burr height, edge drop and cut edge quality.

ChemQuest Inc

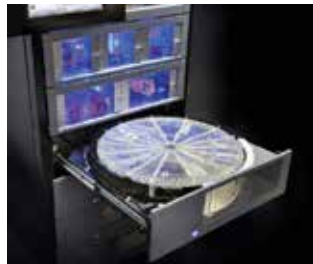
Booth S5333
Finishing Systems/
Eco-Friendly Chemicals



ChemQuest offers washers, ovens, booths, custom fabricated systems & full line of industrial chemicals.

CribMaster

Booth N14097
ProStock Next Generation
Carousel Drawer



CribMaster's engineered ProStock industrial vending solution introduces an innovative, game-changing carousel drawer design.

DESCH Canada Ltd

Booth S4742
Sinox



The DESCH Sinox safety clutch is a spring-actuated clutch, combined with the flexible DESCH Pex coupling.

Donaldson Torit - Donaldson Company Inc

Booth S2980
Downflo® Evolution
(DFE) Dust Collectors



Donaldson Downflo® Evolution (DFE) dust collectors require fewer filters & have a smaller footprint compared to traditional cartridge collectors. It delivers operational excellence with its MaxPulse™ Cleaning system, air flow design, & Ultra-Web® media.

Euroboor USA

Booth C1034
ECO.30 Portable Magnetic
Drilling Machine



Due to its compact size, the ECO.30 is the ideal machine to drill holes in small spaces. The machine is less than one foot high and weighs only 18.5 lbs. With its 8.1 Amp power the ECO.30 pierces gaps between 1/2" and 13/16" very easily and quickly.

GeorgeB Design

Booth N19091
MiG Buddy



The MiG Buddy is a welding gun holster for MiG welding guns. It acts like a third-hand, keeping your MiG gun ready. The universal mount system adapts to any work environment, welding cart, bench, welding table, or directly on the work piece.

GH Induction Group

Booth N9110
TVK-S350: Induction Compact
Vertical Hardening



The GH Induction Group introduces the TVK-S350, the first model in the TVK Series of compact vertical hardening machines offering top-level quality with low CAPEX.

Intercomp

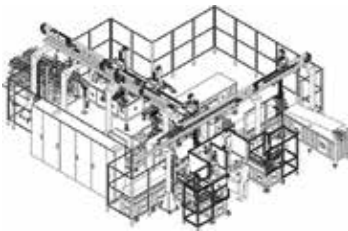
Booth S4435
CS3000 LED Crane Scale



The CS3000 LED Crane Scale is available in capacities ranging from 2,000lb to 100,000lb and comes standard with a large 1.5" (38mm)

five digit LED display bright enough for outdoor use; an ideal solution for overhead load monitoring.

Mille Miglia Engineering srl
 Booth N3088
Automatic Line For Catalytic Converters



Mille Miglia Engineering offers both compact machines for single applications and complete working cells for multiple and more complicated productions.

Patterson Fan Co
 Booth N8111
db - The Quiet Fan



Patterson Fan Co introduces its quiet fan to the industrial market, 40% quieter with 70% more clearance.

Proto-1 Manufacturing
 Booth N5061
RFM-6 / TSM-4.0 Machine



Proto-1 Manufacturing introduces its RFM-6 / TSM-4.0 Machine. The machine can do rotary tube end forming and cutoff with the ability of segmented expansions and reductions to help save cost and increase productivity.

Ruwac
 Booth N22101
WS2320-HD Vacuum with Dust Extraction Swing Arm



Ruwac USA's WS2320 vacuum with an exclusive attached Dust Extraction Swing Arm increases productivity and filter life during the welding process by ensuring that airborne dusts, gases and smoke emitted during the manufacturing process are safely removed.



PROUDLY MANUFACTURING RESISTANCE WELDERS IN THE USA SINCE 2000

Robust, Welded Steel Frame— Rigid, Hard-Bussed Copper Secondary— Compact, Floor-Space

WSI Introduces the ValuePress Pedestal Welder at FABTECH Booth N19090

Replace Your "Weld Gun on a Stand" with a True Pedestal Welder!

Customizable ValuePress Features

- Designed for Spot, Nut, or Stud Welding
- Optional Automatic Fastener Feeding
- Optional Nut and Stud Detection
- Single Phase AC or Mid-Frequency
- Customer Choice of Weld Control
- Force Range of 400-2,200 Pounds
- Easily Integrated with Robot End Effectors
- Operator Friendly, Off-Line Initiation Available
- Pneumatic Components Customer Specified
- Paint Color Customer Specified
- Air and Water Hose Color Customer Specified

Standard ValuePress Features

- Robust, Steel Welded Frame
- Rigid, Hard-Bussed Copper Secondary
- 20" x 32" Compact, Floor-Space Saving Profile
- Aluminum Ram with Fast Follow-Up
- Ram Coupled to Profile Rail and Carriages
- T-Slotted Copper Platens and Optional Arms
- Digital Pressure Switch
- Digital Water Flow Switch
- Parallel Water Manifolds
- Frame Cut-Out for Overhead Lifting
- Fork Pockets for Tow Motors

See the ValuePress Pedestal Welder and learn more about it at FABTECH Booth N19090

Other Machinery/ Equipment/Parts/ Products

Stoelting

Booth S5612
L-3625-SP Lewis Large Series
Ultrasonic Cleaner



The 6,000-watt rated ultrasonic cleaner features silver brazed, zero spaced, 100 percent nickel laminate magnetostrictive transducers, which operate at 20 kHz.

Techniks Inc

Booth C943
MagVISE Magnetic
Workholding Chucks



Techniks Inc offers all sizes and types of magnetic workholding chucks for CNC operations including face milling, edge milling, drilling, boring and turning.

Thermal Care

Booth S1918
NQV Portable Chiller



Portable chiller with variable speed compressor technology creates a virtual variable-size chiller that changes its capacity to match the load. Based upon typical running conditions the incremental cost can be paid back in less than six months.

U-Mark Inc

Booth N6006
M Series Ink Markers



M series markers feature the best permanent ink available and are designed for professional use. M series has four models, all with performance oriented features: ergonomic anti-roll caps, heavy duty tips, industrial design and excellent ink flow.

Vidir Machine Inc

Booth C1012
Sheet Metal Vertical
Lift System (VLS)



The Sheet Metal Vertical Lift System (VLS) is an automated storage and retrieval system for use in an industrial manufacturing setting.

Zerust Corrosion Solutions

Booth S4016
Zerust ActivPak Corrosion
Inhibitor Diffuser



Zerust®/Excor® ActivPak® offers powerful and fast-acting corrosion protection for challenging applications such as overseas shipping and in polluted factories.

Plate & Structural Fabricating

Akyapak

Booth S961
3 ADM Multi-Spindle Beam
Drilling Line



High quality structural steel solution for beams and plates with high speed drilling, tapping, scribing, milling and counter sinking.

Carell Corporation

Booth S3919
Carell Tank Head
Forming Machines



Carell introduces its Dishing Press. Options include: 200, 300, 400 Tons, 13' diameter, 3/4" plate capacity, 1.5 ton & 3.5 ton Auto-Manipulator. In addition, Carell offers its Circular Flanging/Shearing solutions up to 32' diameter, 3/4" thickness, flanging, & joggling.

Ficpe Corporation

Booth S3942
Vanguard Three
Spindle Drilling Line



The Vanguard Three Spindle Drilling Line delivers high tech performance for the price of outdated hydraulic drill lines.

Hougen Manufacturing Inc

Booth S2212
HMD927 Power
Feed Magnetic Drill



The HMD927 power feed magnetic drill is packed with power and torque. The HMD927 has a capacity up to 1-5/8" in diameter & 2" deep. Weighs 43 lbs and is Made in USA.

Lincoln Electric Co

Booth S951
PythonX® II



PythonX II is a computer-controlled plasma cutting system that has revolutionized structural steel fabrication, replacing up to six traditional structural beam operations, including drill lines, band saws, coping machines, angle punches and more.

Voortman Corporation

Booth S3978
Robotic Cutting and Layout
Marking System



The Voortman V808 raises the bar as the industry's most versatile robotic cutting and layout marking system, utilizing both plasma and oxy fuel. It assures a very high accuracy and cutting quality for every possible structural shape.



From **FEEDING** to **FINISHING**

Partnering for performance



LASERCOIL
TECHNOLOGIES LLC



Experience in **Everything** We Do

Over 150 years of combined manufacturing experience with multiple innovations launched along the way — the partnering of the Automatic Feed Company, LaserCoil Technologies and Georg provides coil processing technology depth and breadth that is unparalleled.

From feeding, leveling, laser-blanking, cut-to-length, slitting, and finishing to high-production or space-constrained applications — the partnering of these companies fulfills all your coil processing needs.

Now launching their latest technology, visit FABTECH booth S4584 to learn about LaserCoil's new dual-head laser cutting system. Achieve production speeds that challenge mechanical blanking, eliminate die cost and maintenance, improve quality and boost flexibility.

LEARN MORE AT:

FEEDING2FINISHING.com



Visit **Booth S4584** at FABTECH in Chicago, November 9–12 to learn more

Press Brakes

Bystronic Inc

Booth S919
Bystronic Xpert 40 Press Brake



Introducing the Xpert 40 – Bystronic's compact, ultra high-speed, ergonomic press brake.

Cincinnati Inc

Booth S2799
GoForm

The GoForm 40 ton electric press brake is a precision, mobile, and versatile addition to the CI press brake product line.

EHRT / International Technologies Inc

Booth S2779
O-Frame Servo Electric Press Brakes



International Technologies is bringing CoastOne's next generation O-frame servo electric press brakes to North America. The larger capacity brakes feature 3-6 servos and a unique frame design that creates less vertical deflection and torsion.

Ketec Precision Tooling Inc.

Booth S2042
Press Brake



Ketec's European style Press Break tooling is manufactured under cutting edge CNC production technology with high tensile alloy. Accuracy comes in variance of 0.01mm for the most precise bending performance.

Lazer Safe Pty Ltd

Booth S2033
Sentinel Plus Press Brake Guarding System



Sentinel Plus is an advanced press brake guarding system designed for retrofit applications and is optimized for high speed performance machines. As a camera based system, Sentinel Plus delivers exceptional levels of protection and performance.

Salvagnini America Inc

Booth S1731
B3.ATA Automatic Press Brake



Salvagnini America Inc offers users the ability to form kits on a press brake with a total kit cycle time that is the simple sum of the cycle times of the various parts.

Punching

Trilogy Machinery Inc

Booth S3949
SUNRISE Fully Automatic Processing System



Trilogy Machinery introduces the SUNRISE APS - Automatic Plate Punching and Shearing System.

Resistance Welding

Dengensha America Corp

Booth N18025
Range Of Resistance Welding Value & Support



With the NDZ Projection Welding System and the WS-100, Dengensha offers manufacturers the widest range of projection and spot welders, to weld guns, to feeders and controls with consumables, to hand held controls, to spare parts, and training.

Robotics

American Torch Tip Co Inc

Booth N26030
ATTC LIGHTNING® ROTO360 Robotic MIG Torch



ATTC launches LIGHTNING® ROTO360 robotic 550A Thru-The-Arm MIG torch for Hollow-Wrist robotic welding systems. Rotational reorientation not required, with infinite continuous-axis joint connection. Joint design decreases weld cycle time.

American Weldquip Inc

Booth N22097
ArcSafe QC Solid Mount Robotic System



American Weldquip introduces the ArcSafe™ QC SOLID MOUNT Quick Change robotic system. The ArcSafe system is designed for use on robots with integrated collision software.

Kosmek USA

Booth S4421
Zero Backlash Robotic Tool Changer



Kosmek introduces its Robotic Tool Changer with Zero Backlash. Dual taper-to-taper contact surfaces provide superior rigidity along with 3 micron repeatability for payloads up to 120kg.

OTC DAIHEN Inc

Booth N18007
Robot Monitoring Unit (RMU)



RMU is a robot safety control unit using a functional safety technology incorporating advanced safety features. When a failure is detected, the power is shut off, and the robot will stop operation.

Safety & Environmental

ArcOne

Booth N22030
AirPlus®



The AirPlus® Powered Air System is the third generation development from the our

20-year PAPR program. The AirPlus® combines electronic superiority with timeless simplicity at an affordable price.

Columbus Industries Inc

Booth S5559
CI Micro Shield Mini-Pleated Energy Saving Filter



The CI Micro Shield® Mini-Pleated Energy Saving Filter is an economical choice for extended service, high efficiency air filtration requirements.

Imperial Systems Inc

Booth S3396
CMAXX EvenLock Technology



Imperial Systems Inc offers a system in its dust collection model that ensures 100% even locking of all filters in the machine.

Keller USA Inc

Booth S560
VARIOeco with ProPipePlus



Keller introduces its VARIOeco with ProPipePlus, a flameless dust collection system for metal applications. The ProPipePlus ensures safe, flameless pressure relief for metal dust explosion risks and is designed to eliminate the need for a designated safety zone.

MCR Safety

Booth N21082
Memphis Ninja



The Memphis Ninja series provides total safety solutions for general purpose, cut, and thermal protection.

NEW PRODUCTS

VISIT US AT BOOTH S 2797

HAEUSLER

the forming factory

THE ESTABLISHED GLOBAL LEADER IN METAL FORMING
75+ YEARS OF EXPERIENCE
3 AND 4 ROLL PLATE ROLLING MACHINES
COMPLETE PRODUCTION LINES
CUSTOMIZED MACHINERY FOR UNIQUE APPLICATIONS

HAEUSLER AG Duggingen | Baselstrasse 21 | CH-4202 Duggingen | Switzerland | Phone: +41 61 755 22 22 | Fax: +41 61 755 22 00
www.haeusler.com | info@haeusler.com

Safety & Environmental

Miller Electric Mfg Co

Booth N11037
LPR 100 Half Mask



Expanded options to this low profile reusable respirator include a wrap-around spark guard that protects filters from spatter, combination P100/ Nuisance Level OV Relief filters, and new medium/large size offerings.

Digital Infinity™ Series Welding Helmets



The Digital Infinity™ Series includes a 13.4 square inch viewing area, to provide an unsurpassed view and eliminate tunnel vision.

Movex Inc

Booth C1616
PR Fume Extractor



Advanced technology, materials and design all contribute to the Movex PR weld fume extractor's success. High positional stability, maximum capture efficiency and maneuverability allow the PR to fit virtually any welding application.

Nordfab Ducting

Booth N19087
Nordfab In-line Spark Trap



Nordfab's In-line Spark Trap helps reduce the possibility of fire in cyclones / collectors by decreasing the number of sparks reaching these units through the ductwork.

Rite Hite Machine Guarding

Booth N23006
DEFENDER Cell



The DEFENDER Cell offers complete 4 sided safety enclosure for any type of machinery. Includes Cat 4 interlocked point of operation high speed door and cage fencing.

Schaefer Ventilation Equipment

Booth N28029
Hazardous Location Fans



Schaefer offers the industry leading airflow and durable hazardous location fans, leading airflow and durability, for use in environments that contain flammable and potentially explosive gases, vapors or dusts. Fan components are fabricated from materials that will not produce a spark when struck by a direct impact blow.

TSE Safety Inc

Booth N14086
True Flex Knee Pads



TSE Safety offers a line of products to prevent knee injuries.

VitaFlex LLC

Booth S5669
Soft-stretch Hood for PowderCoaters & SprayPainter



Soft-stretch Hood is a PPE covering the entire head and neck. It blocks airborne particles, powder, sparks, and paint overspray and greatly improves safety, comfort, and job efficiency in Metal Cutting, Welding, Powder Coating, and Spray Painting.

Whiting Corporation

Booth S5089
AccessPoint



AccessPoint is a universal access-control system that utilizes smart card technology to physically prevent unauthorized users from using your high-value or high-risk equipment.

Saws & Cut-off Machines

Behringer Saws Inc

Booth S2731
HBE Series
Horizontal Bandsaws



Behringer Saws, Inc., introduces the HBE Dynamic Series Horizontal Bandsaw. A versatile, compact automatic saw available in four models; 261A, 321A, 411A and 511A with a cutting capacity of 10.2" to 20.0".

Beka-Mak Makina Sanayi Ve Ticaret AS

Booth S2276
BMSY 1515C



The bow is constructed in heavy gauge steel and mounted two chromed and grinding pillars offer a strong rigid sawframe, providing a high degree of accuracy when cutting.

Dake Corporation

Booth S2072
Variable Speed Manual Cold Saw



Dake Super Technics 350 inverter model manual cold saw.



Binks GEMS™
Global Electronic Mix Solutions



Binks DX70 Diaphragm Pump

NEW
for FABTECH
2015



Ransburg RansFlex®
Electrostatic Applicator

More Technologies. Expert Support. Better Solutions.

High production to hand finishing, our brands are the global leaders in innovative finishing solutions.

One Source.

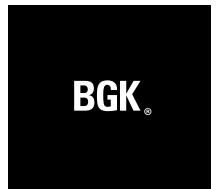
- Atomization
- Automated Systems
- Infrared & Catalytic Curing
- Electrostatic
- Fluid Handling
- Lab & Testing Center
- R&D Resources
- Training



devilbiss.com



ransburg.com



bgk.com



binks.com

See for yourself
FABTECH 2015 Chicago • Booth # S5367

Technologies by



Finishing Brands®

A **CARLISLE** COMPANY

Saws & Cut-off Machines

Emmegi USA Inc

Booth S2995
SATELLITE XT



5 axis machine & cutting center is performing all milling, drilling, threading, cutting and notching on full length aluminum extruded lineals.

HABERLE / Ken Bergman & Assoc LLC

Booth S2359
Compound Cutting Machine



HABERLE Model H 90 offers HSS Saw Blade (14") 350x40mm/compound angel cuts, notching, angle cuts, slitting, for tubes, sections or channels of steel, stainless steel and nonferrous metals. Sawhead tilts 0° - 90°.

Kalamazoo Machine Tool

Booth S2381
DC12A-NC



The DC12A-NC is for high volume production of a variety of materials. The robust construction, quality components and advanced design yield vibration free sawing and extremely long blade life at high production rates.

Kar Metal San Ve Tic LTD STI

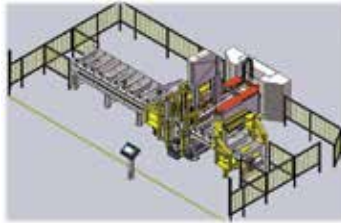
Booth S3543
KMT Karmetal Band Saw Machine



Kar Metal San Ve Tic LTD STI offers manual, semi-auto, auto, bundle cutting, horizontal and double column band saw machines.

Marvel Manufacturing Co

Booth S3907
600BA-PC3.1S



The 600BA-PC3.1S bundle saw provides the user with detailed performance metrics through its PC3.1 control capturing detailed saw utilization and performance measurements. This saw also provides the option of a 48" servo controlled axis.

Scotchman Industries Inc

Booth S1923
GAA-500 90 DT-20



This Automatic Upcut Circular Cold Saw with Vertical Drill gives the saw the ability to drill and tap holes up to 20mm with a single spindle drill, or by adding a multi-spindle drill the user can add multiple holes at one time.

TigerStop LLC

Booth S1979
TigerSaw 2000



TigerSaw 2000 features a revolutionary blade misting system which moves with the blade to lubricate the leading edge, and an air-over-oil drive cylinder to provide saw-stroke control for faster processing and better cut quality.

Software & Machine Controls

Alma CAM USA LLC

Booth S2369
almaCAM 4.0

almaCAM v4.0 brings a user interface and the security and functionality of a database environment. Built in workshop management tools make this a powerful and flexible CAM application.

AMS Controls Inc

Booth S3450
Pathfinder Edge
AMS Controls Inc offers its web-based trim profile design and management application.

ANSYS SpaceClaim

Booth S4587
ANSYS SpaceClaim 2015
ANSYS SpaceClaim is the leading 3D Direct Modeling software solution on the market. It enables anyone to create, edit, or repair geometry without worrying about underlying technology.

ATS Applied Tech Systems LLC

Booth S5078
Inspect Quality Control Software 6.0



Inspect Visual Quality Software for attribute and variable data collection, image driven inspection and web based analysis and reporting. Reduces costs associated with scrap, rework and warranty claims. Effectively used in stamping, assembly, and paint applications.

Autodesk Inc

Booth S506
Autodesk® TruNest



Autodesk® Trunest products facilitate every step of the nesting process for metals, thick plates, or sheets for hand lay-up composites. This includes translation, optimization, and manufacturing the nest on all industry-standard machine tools.

DELTA Computer Systems Inc

Booth S4436
RMC Motion Controllers



Delta Computer Systems, Inc. announces the addition of Redundant Feedback to its RMC75 and RMC150 closed loop Motion Controllers.

FabTrol Systems Inc

Booth S2350
FabTrol Mobile



FabTrol Mobile provides real-time remote access to FabTrol Pro steel fabrication management software. The latest release provides the ability to retrieve drawings and track production progress on any tablet.

FlashCut CNC

Booth S3509
**V5 CAD/CAM/
 CNC Software With Nesting**



FlashCut V5 CAD/CAM/CNC is more versatile than ever providing foreign language support, auto kerf crossing detection, plasma, oxyfuel, waterjet and marker support, shape library, bar code scanning, editable cut charts, and RS485 communication with plasma machines.

**Flow International -
 Advanced Solutions**

Booth C1309
FlowXpert 2015



The FlowXpert Software Suite is a robust 3D CAD/CAM platform designed specifically for waterjet cutting, programmers and operators will notice improved pathing workflows, resulting in faster waterjet programming.

Fujitsu Glovia Inc.

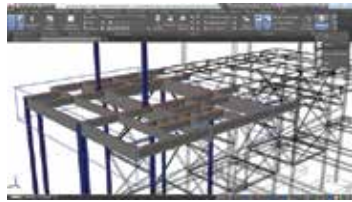
Booth S2143
GLOVIA G2 V3



Discrete manufacturing ERP software company Glovia International, Inc., a Fujitsu Company, has released a version that enhances GLOVIA G2's innovative, highly visual user interface and enables universal use on any device, operating system or browser.

Graitec Inc

Booth S4589
Autodesk Advance Steel 2016



Graitec Inc offers 3D BIM software for steel modeling and detailing.

Jobscope ERP

Booth S1904
Jobscope Configurator

Jobscope Configurator is a rules-based configurator software for configure-to-order product lines.

**KeyedIn Manufacturing
 Software Solutions**

Booth S2186
Cloud Based ERP Software



KeyedIn Manufacturing is a dynamically configurable, Cloud-based ERP software designed specifically for fabricating manufacturers. The software provides the flexibility users need to run a business, not the way software mandates.

LINACUT
 Coil fed fiber laser

GENERATING NEW LASER CUTTING APPLICATIONS

Day long unmanned continuous production
 Scrap reduction, output raise
 Unlimited part length
 Automatic part offloading and scrap ejection

Any sheet metal applications
 O.E.M. - Contract manufacturers - Stamping specialists

WILL BE EXHIBITED AT
 CHICAGO
FABTECH
 Booth S974

DIMECO
 www.dimeco.com contact@dimeco.com

Software & Machine Controls

Logopress3/Accurate Die Design Inc

Booth S4124
Logopress3 NESTING



While first developed within Logopress3 die design software to nest wire EDMed

punches on wire EDM burn blocks, Logopress3 NESTING software is used by others for nesting parts on sheets for waterjet or for laser cutting and for a variety of other uses.

Metalix CAD/CAM Ltd

Booth S2286
cncKad & MBend



Faster AutoNest has tooling view

and support for CAM editing. cncKad V15 includes new tube processing and 3D simulation, ribbons, and warnings of floating scraps. Enhanced MBend V6 also supports native Cincinnati and Amada OPE NC creation.

MetaMation Inc

Booth S2314
MetaNEST



The latest version of MetaNEST, MetaMa-

tion Inc's flag ship nesting software for free shape geometry nesting, has revolutionary algorithms that take advantage of software and hardware platform to deliver the highest material utilization in the shortest time.

MIE Solutions Inc

Booth S2256
MIE RFQ

MIE RFQ is a powerful tool from MIE Solutions that facilitates the RFQ process between buyers and suppliers in a simple and highly efficient manner.

Radan

Booth S1820
Radan 2016



Radan provides applications that are essential to the design and manufacture of sheet metal components and products. The Radan 2016 release will offer new features in all products, including Radan CAD/CAM, Radbend, Radm-ax, Rادتube and Radimport.

Schwarze-Robitec GmbH

Booth N8103
CNC Control System



The CNC control system reduces non-productive times to a minimum. The original sequence of the bending process is broken up and the steps are arranged synchronously. It can be operated intuitively which also contributes towards making work easier.

Shop Data Systems Inc

Booth S2050
SmartContour™



ShopData Systems software has the ability to burn closer tolerance holes with the SmartContour™ kerf adjustment feature. Internal diameters, medium size holes, small holes and lead ins have separate adjustments that allow users to improve the finish of holes and internal cuts.

Shop Floor Automations Inc

Booth S5663
JobPack Advanced Core Scheduler



JobPack Advanced Core Scheduling allows for customized workflow scheduling. It also has

real-time Graphical Scheduling and real-time graphical capacity metrics.

ShopFloorConnect

Booth S4221
Application Program Interface (API)



The ShopFloorConnect web service enables easier sharing of job information with existing ERP and MES Software.

SigmaNEST Systems

Booth S3574
SigmaNEST X1



SigmaNEST X1 offers improved functionality for CNC punch, laser, and plasma machines, and new Dynapack-HD nesting engine, for more efficient multi-sheet nesting tasks, improved best sheet selection, and material yield improvement.

Visi

Booth S1820
VISI 21



Major VISI 21 developments include a tool to manage multiple instances of the same geometry, component revision management, surface modelling tools, tolerance application for drilling, enhanced tool/motion kinematics and updated CAD translators.

Stamping

Dallas Industries Inc

Booth S4208
Zig-Zag Servo Feed with ProfileSelect™



The Dallas Zig-Zag Feed helps achieve up to a 13.5% reduction in material scrap when stamping regular or irregular shapes.

DTC Products Corporation

Booth C536
SlugKeeper Machine



DTC Products SlugKeeper Machine uses a pneumatic-ly-powered

grinder to precisely machine a small angled groove into the sidewall of the die cavity in a stamping die in order to prevent slugs from pulling onto the die surface.

Hutchison Tool Sales Co

Booth S4262
Stripper Mounted Tapping Head



The Stripper Mounted In-die Tapping Head is used in transfer press

applications to eliminate interference of the camshaft driver on the tapping head with the transfer arms on the press.

Irmco Inc

Booth S4274
IRMC0 FLUIDS® 313



IRMC0 FLUIDS® 313 synthetic products provide extreme lubrication

and die protection for forming AHSS and UHSS—while still protecting zinc-coated surfaces of newer materials.

Quintus Technologies LLC

Booth S4789
Flexform Fluid Cell Press QFC
 0.7x1.8-800



Quintus Technologies LLC introduces its press, the

QFC 0.7x1.8-800. The QFC 0.7x1.8-800 offers a low-cost, high quality sheet metal forming for prototyping and production.

Sander Automation Corp

Booth S4476
ZGV 200 / ZHGV 200 High Speed Servo Transfer



Sander Automation introduces the ZGV 200 / ZHGV 200 high speed servo transfer system. Ideal

for high speed presses with stroke rates up to 200 spm and with 2 meter bolsters or less the system maintains full precision and accuracy.

Don't Miss The Special Events Scheduled for FABTECH 2015

Make plans to stop by the keynote presentations, panel discussions, AWS Welding Competitions, and join us for a special FABTECH Industry Night. Find event details at fabtechexpo.com/special-events.

MONDAY, NOVEMBER 9

9:00 – 10:00 AM Keynote Presentation: Running a Winning Organization, Grand Ballroom

12:30 – 1:30 PM Featured Panel Session: What Additive Manufacturing/3-D Printing Means for the Metal Fabrication Industry, FABTECH Theater, Grand Concourse

TUESDAY, NOVEMBER 10

12:30 – 1:30 PM Featured Panel Session: Enterprise Security Risks: Is Your Company Protected? FABTECH Theater, Grand Concourse

5:30 – 7:30 PM FABTECH Industry Night: Lucky Strike, Downtown Chicago, Advance Ticket Price: \$50
 Special Appearance by Jeanette Lee, famous "Black Widow" Professional Pool Player

WEDNESDAY, NOVEMBER 11

7:30 – 10:30 AM Women of FABTECH Breakfast with Tech Tour: Grand Concourse Lobby, Advance Ticket Price: \$15

8:30 – 9:30 AM Keynote Presentation: Innovation in the Future of Work in Advanced Manufacturing, FABTECH Theater, Grand Concourse

12:30 – 1:30 PM Featured Panel Session: State of the Industry Executive Outlook: Advanced Manufacturing, FABTECH Theater, Grand Concourse

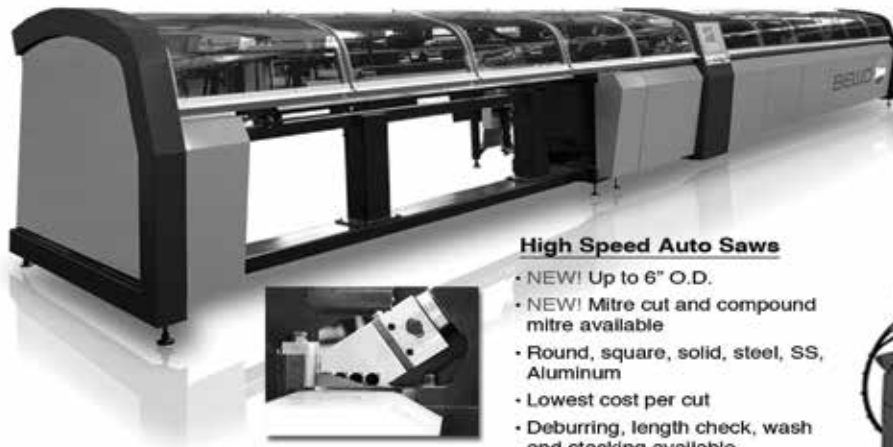
MONDAY, NOVEMBER 9 - WEDNESDAY, NOVEMBER 11

Professional Welding Competition: Competition runs during show hours Nov. 9-10, Winners announced on Nov. 11 at 11:00 AM Hall C1, Both C1844



High Speed Tube Cutting Machines

Cut up to 6 Tubes Simultaneously!

**High Speed Auto Saws**

- NEW! Up to 6" O.D.
- NEW! Mitre cut and compound mitre available
- Round, square, solid, steel, SS, Aluminum
- Lowest cost per cut
- Deburring, length check, wash and stacking available



High Speed Auto Saw
 Live Demo at FABTECH 2015!
 Booth #N2041

**Manual Cold Saws**

- Cut up to 4.25" diameter
- 2 speed for ferrous or non-ferrous
- Unique stock clamp ensures low-burr saw cut
- Mitre cut



Kent
 CORPORATION

9601 York Alpha Drive
 North Royalton, Ohio 44133
 deanc@kenttesgo.com
 440-582-3400

Kent Corporation is the exclusive North American distributor for BEWO Cutting Systems

Visit us at:

FABTECH Chicago
November 9-12
 Booth #N2041

Stamping

Stamtec Inc

Booth S4131
Servo-Press Production System



Stamtec introduces its 176 ton, two point, direct drive press model iS2-176, with variable stroke length via pendulum motion, up to 8.66".

Uelner Precision Tools & Dies

Booth S4218
Bliss 1500 Ton Coil Feed Press



The Bliss 1500 Ton Coil Feed press has a bed size of 206" x 60" with 3 Axis Servo Wayne Trail Transfer and can be customized for new tooling programs. Press speeds now up to 15 SPM.

Tool & Die

Diehl Steel Co Inc

Booth S4307
Diehl Express™

Diehl Steel introduces its response service called Diehl Express, offering same day shipment on tool steel orders. Most orders placed by 12:00 PM EST can now be cut and shipped the same day, including orders using Diehl's Accu-Square process.

MetalRustGuard

Booth S4020
MetalRustGuard



MetalRustGuard offers its self adhesive, protective, rust inhibiting wrap that is non-toxic and effective on all types of metal. Ideal for shipment or storage of metal in various climates.

Pacesetter Systems

Booth S4288
Power Pallet - Push/Pull Die Loading System



The Pacesetter Power Pallet can help decrease die changeover time by making loading and unloading dies a breeze.

Tooling

BESSEY Tools North America

Booth N24032
16 mm Matrix Table Clamps



BESSEY Tools North America introduces its high-quality welding table clamps for 16 mm matrix holes.

Clamptek Enterprise Co. Ltd

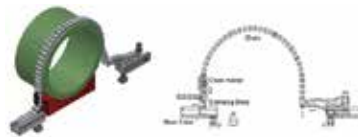
Booth N22100
CPLCU Pneumatic Leverage Clamp



Clamptek Enterprise Co. Ltd offers its CPLCU pneumatic leverage clamp with long lifetime.

Lenzkes Clamping Tools Inc

Booth S4109
Chain Clamp



The Chain Clamp is an easy, fast and safe way to hold round and cylindrical work pieces, such as valve bodies, flanges, pump housings and pistons. Also, the chain links do not have to be taken out when clamping different sized parts.

SICK Inc

Booth S2363
IMB Inductive Sensor



IMB Inductive Sensor offers a more durable solution for harsh environments. IP 69K enclosure rating, extended temperature range, and stainless steel housing ensure a long-lasting solution and reduced downtime.

Tube & Pipe Fabricating or Welding

Aquasol Corp

Booth N14074
I-Purge and I-PurgeX Modular Bladder Systems



The CE approved, USA made and patent-pending I-Purge and I-Purge X enable users to purge with one interchangeable solution. Comprised of two spark-resistant inflatable bladders connected by a high heat harness, both create an air-tight seal.

Beveltools

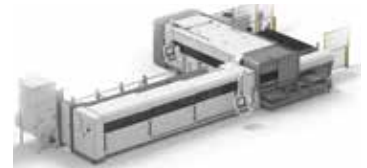
Booth N4094
ALU- Cutter Heads for Aluminum



Beveltools launches a solution for beveling and rounding of aluminum. The same patented technology used for the current cutter heads is now available for aluminum. These heads have wider flutes to prevent loading.

BLM GROUP USA Corp

Booth N2010
LC5



BLM GROUP USA Corp introduces its tube and sheet fabricating machine.

HGG Profiling Equipment BV
Booth S1999
Vessel Cutting Machine



HGG introduces its Vessel Cutting Machine, designed to cut precise beveled holes in pressure vessel tank heads, shells, nozzles and reinforcing pads; as well as hillside holes. Oxyfuel or plasma. Standalone or with SPC Series Machine.

RIDGID
Booth N2068
RIDGID® B-500 Transportable Pipe Beveller



The B-500 produces a consistent, high-quality bevel in less than two minutes without flames or sparks, replacing traditional beveling methods such as grinding.

Sumner Manufacturing Co Inc
Booth N22042
PFAST



The Pipe Fitting Alignment System Technique or PFAST is specifically designed to allow pipe fitters to quickly and easily

tack fit-ups that include 1-inch to 8-inch flanges, fittings, reducers, caps and pup joints.

Thermatool Corp
Booth N2013
HAZControl Technology High Frequency Welders



HAZControl Technology delivers the best combination of power & frequency to produce the needed weld characteristics for the many mechanical transformations to produce the best welded tube possible.

Tri Tool Inc
Booth N24041
301.5 SP Squaring Machine



Tri Tool's Short Perch squaring machine (AC or 18VDC) features Chip Guards for operator safety, patented Auto-Retract micrometer handle, wide size range for .125" to 1.50" tubes, quick saddle clamping, and a compact design for working in tight spaces.

Wauseon Machine & Manufacturing Inc
Booth N2029
1004EL Electric End Forming Machine



The 1004EL Electric End Former, for tubing up to 1" diameter (25.4mm), has been redesigned to achieve an improved cycle rate, and includes

a 4-hit electric turret, a servo flag stop, and a new frame that features a sliding guard and light bar.

Winton Machine Company
Booth N5071
OB23 Orbital Bender



Winton introduces the OB23 Orbital Bender for high volume copper at an affordable price.

Tube & Pipe Producing
Hexagon Metrology Inc
Booth S522
TubeShaper



TubeShaper is the result of 30 years of experience in the tube manufacturing sector. It is a single solution for applications related to tube manufacturing and bending, reverse engineering, tube inspection, and tube gauging.

Mill Masters
Booth N1034
EGR Tube Mill



MillMasters introduces its thinwall welded stainless steel tube mill for flat-oval, round, and rectangular EGR tubes. shapes from 14mm to 90mm; material thickness down to 0.127mm; inward and outward dimples or corrugation, line speeds up to 14 meters per minute.

Nantong Reliantt Co Ltd
Booth C930
Tube Mills/ Pipe Welding Line



Nantong Reliantt Co Ltd offers almost 30 models tube mills/ pipe welding line covering ranges from 3/8" (8mm) up to 10" (273mm) diameter (corresponding square & rectangular tubes) and wall thickness from 0.3mm up to 12.7mm. Also accepting customized machines.

Olimpia 80 S R L
Booth N3094
Universal driven Turk's Head



Olimpia 80 S R L offers its Universal Driven Turk's Head for shaping square and rectangular tubes without changing any single roll in the sizing turk's head stands.

Rafter Equipment Corp
Booth N3087
Rafter 3-Roll HFI Weld Squeeze Box



Rafter Equipment Corp features its 3-Roll HFI Weld Squeeze Box design. The design offers improved strength over traditional scroll chuck style boxes. Additional features include enhanced serviceability and ease of operation.

Waterjet

AKS Cutting Systems Inc

Booth S2714
AKS water-kut X3



The AKS water-kut X3 is a mid-level waterjet production machine specifically designed with an open layout for easy load/unload for fabrication shops. Cutting pressures from 55,000psi to 90,000psi. Optional TCS - Taper Control System.

Alliance Manufacturing Inc

Booth S4857
Parts Washing Systems



Alliance introduces its CB E-Series washer, a compact conveyerized belt system designed for inline or cellular manufacturing applications. Conveyerized cleaning systems can include process zones such as wash, rinse, rust inhibit, drain, ambient blowoff, heated blowoff, and more. Each machine is configured to the customer's needs. Depending on the cleaning application, optional accessories can also be added to the machine.

Jet Edge

Booth S1974
iP60-30 Waterjet Pump



Jet Edge's iP60-30 waterjet intensifier pump produces 0.6 gpm of UHP water at a continuous operating pressure of 55,000 psi.

KMT Waterjet Systems Inc

Booth S2786
STREAMLINE SL-VI Series
Waterjet Cutting Pumps



The STREAMLINE SL-VI Waterjet Cutting Pumps (15-200hp/60,000-90,000psi) are designed with multiple features to deliver efficiency & productivity including the PRO 90,000psi /125hp pump.

OMAX Corp

Booth S2767
Intelli-MAX Software Suite 22



Delivering the highest level of speed and performance, the built-in cutting strategies optimize tool paths for precision cutting. Intelli-MAX easily fits within existing workflows, accepting over 90 different file formats.

Semyx LLC

Booth S3194
The Genesis Series



The GENESIS Waterjet Cutting Series is a unique monoblock design that provides the ideal system for smaller projects & great introduction for first time waterjet users.

TECHNI Waterjet

Booth S1789
Quantum VP
Electric Servo Pump



TECHNI Waterjet™ announces a second line of electric servo pumps (ESPs), designed to address the requirements of today's competitive manufacturing industry. TECHNI is pleased to introduce the Quantum VP 15/52 and VP 20/60.

Welding Consumables

Antra Technologies Co Ltd

Booth N9089
Auto-Darkening Welding
Helmet AH7-780



Antra Technologies offers its AH7-780 helmet with large viewing area. The sensitivity control is digital and optical class is 1/1/1/1.

Bestone Group Inc

Booth N18089
Gasless Flux Cored Wire E71T-GS



E71T-GS is an all-position, single-pass, flux cored welding wire designed to weld carbon steel. The unique quality of this product is that you do not have to use a shielding gas.

COR-MET INC

Booth N26040
QWP Flux Coated Stainless
Steel TIG Rod



Cor-Met Inc. offers a stainless steel TIG wire with a flux coating for welding root passes and eliminates the need for backing or purging. Available grades 308L, 309L, 316L, 2209, 625, 82, 80S-B6, 80S-B8. Plus special request alloys.

Diamond Ground Products Inc

Booth N17079
Piranha-III Tungsten Grinder



Diamond Ground Product's best-selling tungsten electrode grinder has been redesigned and refreshed. The Piranha III now features a sliding dust shield, integrated electrode receptacle, recessed handle, lighter chassis and signature blue powdercoat.

ELCo Enterprises

Booth N26018
PowerBall™ Torch Products
Expanded Product Line



Wire Wizard® has expanded the revolutionary PowerBall™ Torch Products line to cover virtually any arc welding application. Boost the power of a weld cell with products engineered to prevent arc failures, reduce downtime & maximize conductivity.

NEW MODEL PRESS BRAKE LAUNCH

↓ **GO**FORM

NOVEMBER 9-12 | MCCORMICK PLACE, CHICAGO, IL

- Electric powered
- 40 tons
- Compact size
- Easy to move
- No anchoring required
- Low power usage
- Ergonomic
- Accurate
- Multiple tooling types
- 6-axis backgage
- Long stroke
- Air and bottom bend



BAAMCI 

Also at FABTECH: The world's largest 3D Printer, Booth N9000

(513) 367-7100 info@e-ci.com www.e-ci.com

CINCINNATI®

LASERS PRESS BRAKES SHEARS PM PRESSES BAAM

Welding Consumables

Farina (Jinan) Weldtec & Machinery Co Ltd

Booth N17090

Welding Wire AWS A5.18 ER70S-6



AWS A5.18 ER70S-6 is for all-position welding work, stable arc, less spatter, ISO9001:2008, CCS.CE. Features include: stable arc, less spatter, ISO9001 and CCS.CE.

Lincoln Electric Co

Booth N11021

UltraCore® HD Marine

This FCAW-G wire electrode is designed to provide a flat bead shape and high deposition rates in any position using 100% CO₂ shielding gas. UltraCore HD Marine welds exhibit decreased spatter levels and low fume generation rates over previous wires.

Phoenix International Inc

Booth N24037
Type 40HT



The Type 40HT rebaking oven was recently introduced for bulk storage of electrodes that have been exposed to moisture. The 40HT's fully programmable controller can automate the ramp/soak procedure recommended by the electrode manufacturer.

Rhodium

Booth N4094

HydroProtect Enhanced Cutting Wheels



Rhodium introduces the HydroProtect formula, optimizing the cohesion between grit and bond. HydroProtect encapsulates each individual piece of grit offering longer shelf life and enhanced safety with superior cutting performance.

Weiler Corporation

Booth N22025

Weiler Tiger X Flap Disc



The X abrasive flap discs deliver the ultimate combination of aggressive grinding performance and long life for steel and stainless steel metalworking.

Weld Mold Co

Booth N9099
Custom Alloy Capability

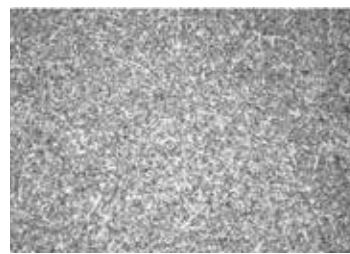


Weld Mold is capable of rapidly developing or modifying specialty electrodes and flux-cored alloys to suit almost any customer requirement and almost any AWS welding specification – providing performance-matched weld solutions.

Wrefs Welding LLC

Booth N28059

WF-PS100 (X100 Grade Pipeline Welding Consumable)



WF-PS100 is an agglomerated flux developed for X100 pipes with two-run technique in high speed. Low flux basicity (1.5BIW) ensures both of the mechanical properties and weldability.

Welding Machines/ Equipment

AGT Robotics

Booth N10082
BeamMaster Weld



The BeamMaster WELD is a Robotic Welding Line specially engineered to answer all the welding needs of structural steel fabricators. BeamMaster WELD features a small footprint, complete robotic automation and integration with dedicated software.

Ajax Tocco Magnethermic Corp

Booth N5079
5/10 kW TOCCOtron AC Induction Weld Pre-Heating System



Designed for portable on-site preheat prior to welding. At 5 kW continuous output, the 5/10kW TOCCOtron AC system satisfies the majority small to medium preheat prior to welding applications and is capable of heating 50 kg of steel to 200°C in 30 minutes.

Bernard

Booth N14037

BTB MIG Guns

The BTB MIG Guns are a rugged and flexible product line that allows users to build their ultimate MIG gun by selecting their desired amperage, handle, neck, power cable and more through a convenient online configurator.



Changzhou Shine Science & Technology Co Ltd

Booth N16083
AS-6122F(D) Welding Helmet



Changzhou Shine Science & Technology Co Ltd introduces its welding helmet with improved shell and larger 4x5 ADF.

CK Worldwide

Booth N22037
Steady-Grip™



With a removable and adjustable pistol grip style handle, the Steady-Grip™ gives the operator smooth, accurate, and ergonomic control of the TIG welding process.

Kistler Machines

Booth N12094
Pipe Rotators of the U-Range (150/500/1000)



The welding devices of the U-Range are fitted particularly to the pipe welder. The main application areas are Shipbuilding, Oil-, Gas- and chemical industry and pipe construction.

Linemaster Switch Corp

Booth N28071
Wireless RF Foot Control



Linemaster's RF Wireless foot control is a unique plug and go system that is compatible with most brand name welding equipment.

Metabo Corp

Booth N24046
Low Profile Angle Grinders



Metabo Flat Head angle grinders are tools for grinding, cutting and finishing in tight confined spaces. The Flat Head grinders can reach into included angles as low as 39°, or narrow spaces as tight as 2-5/8".

FABTECH Bistro

Reserve a seat at the FABTECH Bistro and you will always have a convenient place to eat, meet and network. The Bistro offers assorted menu options including fresh and healthy lunch options, international cuisine and regional favorites — all at a reasonable price. Pre-purchase your individual lunch tickets to avoid the lines.

Find the daily menu, pricing and order tickets at fabtechbistro.com.



Miller Electric Mfg Co

Booth N11037
ArcReach™ Multiprocess Welding System



The ArcReach™ Multiprocess Welding System is designed to reduce downtime, costs and exposure to safety hazards by allowing welding operators to set voltage at the weld joint without the use of control cables.

MK Products Inc

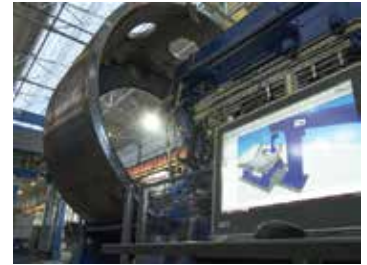
Booth N6004
CobraMig 300



MK Products introduces the CobraMig 300 Aluminum Push-Pull MIG welder with CobraLoc. CobraLoc allows users to separate the feeder from the power supply, giving them portability and full digital control to the weld environment.

Pemamek Oy Ltd

Booth N9104
PEMA WeldControl 300 Create



Pemamek Oy Ltd offers its weld process monitoring solution, robotized welding at one-off lines. This provides offline programming to small and middle-sized work pieces that have a certain repeatability, but that are still one-off products.

GET THE LISSMAC EDGE!

LISSMAC presents 2 new products for deburring and finishing
SEE THEM AT FABTECH!



SBM-XS 300 G1E1

Double sided, uniform deburring of small parts



SMW 123 RB / SMW 123 RT

Versatile and compact - wet process for deburring, edge rounding, and surface finishing

Visit us at:

**Booth S3973
 South Hall**

LISSMAC

METAL PROCESSING



LISSMAC Corporation
 356 Hudson River Road
 Waterford, NY
 Phone +1 518 326 9094
sales@lissmac-corporation.com
www.lissmac-usa.com

Welding Machines/ Equipment

PROTEM USA LLC

Booth N18108
PROTEM HSB



The PROTEM HSB is a PFM (Pipe Facing Machine), range includes 114.3 mm - 1828.8 and mm 4.5" - 72".

PTG Heavy Industries Ltd

Booth N21084
Crawford Swift CNC Friction
Stir Welder



Recent R&D activities at PTG Heavy Industries' UK-based headquarters takes the capabilities of its FSW machine to include the successful jointing of exotic steel and titanium alloys that are suited to the requirements of space and aerospace applications.

PTR-Precision Technologies Inc

Booth N11049
LasVac - Laser Welding in
Vacuum System



PTR's laser welding system produces cleaner welds with little to no spatter and without using cover gas. PTR's laser in vacuum system can even weld up to twice as deep for a given beam power and puts less heat and distortion into the workpiece.

Pyro Shield Inc

Booth C1640
Induction Heat
Convection Ovens



Pyro Shield's introduces its induction heat convection ovens for uniform preheat and stress relief of metals that cannot be heat-treated through induction (i.e. Aluminum, or Stainless Steel). Powered By Miller Electric's Proheat 35 Induction Machine.

Sideros Engineering

Booth S504
SYNCRILIFT - Head and
Tailstock Positioner



The SYNCRILIT offers revolutionary features that include compactness and portability of the head and tailstock thanks to dedicated hydraulic jacks. Syncrolift features two all electric axis: electrical elevation/descent, and electrical 360° left/right rotation.

Southern Stud Weld Inc

Booth N28035
Soyer HesoMatic-9



This mobile stud welding station combines energy source, control and feeding units in one compact housing.

Strong Hand Tools

Booth N26022
GRASSHOPPER Clamp



The GRASSHOPPER Clamp is the safe, efficient way to position small parts for tack welding! Steady small parts such as: bolts, nuts, tabs, and thin metal plates at odd angles with full welding clearance.

SYI Industrial Co Ltd

Booth C1532
F3617 Automatic Tracking
System of Welding



SYI Industrial integrated the automatic tracking device with the optimized welding device, fitting for large structure products. Also, successfully applying to the automatic welding of mining hydraulic support parts and mine loaders' nose.

Timesavers LLC

Booth S1914
Top and Bottom Deburring
Brush Machine



The top and bottom grinder not only deburrs both sides of a part in one pass, but also showcases a new style not seen before.

Tregaskiss

Booth N14037
TOUGH GUN™ CA3 Robotic Air-
Cooled MIG Guns



Featuring a replaceable unicable that offers extended service life to reduce downtime and costs, the CA3 Robotic Air-Cooled MIG Gun is a replacement for the TOUGH GUN G1 Series MIG Gun that maintains TCP with minimal or no robotic programming touch ups.

Walter Surface Technologies

Booth N16106
SURFOX 304



Walter offers its powerful electrochemical MIG & TIG weld cleaning system for stainless steel.

Weil Engineering North America

Booth S2154
LWM & LWC Laser
Welding Machines



LWM laser welding module performs multi-axis welding on stamped parts (injectors/valves). LWC laser welding cell is a configurable welder/cutter. Can have 20" or 40" wide coil-fed laser cutting machine or a multi-axis welding cell w/ laser part marking.

Weldobot Ltd

Booth N22106
SuperMig



Combines plasma and MIG welding for faster, efficient and better process control of thick metal and super alloys welding.

clean air made simple

Learns your processes and trends, then automatically makes system adjustments where most beneficial.

Automatic adjustments save energy, prolong filter life and reduce operational costs.

Constant monitoring of inline sensors to track system performance.

Predictive analytics identify vital maintenance, helping eliminate unplanned downtime.

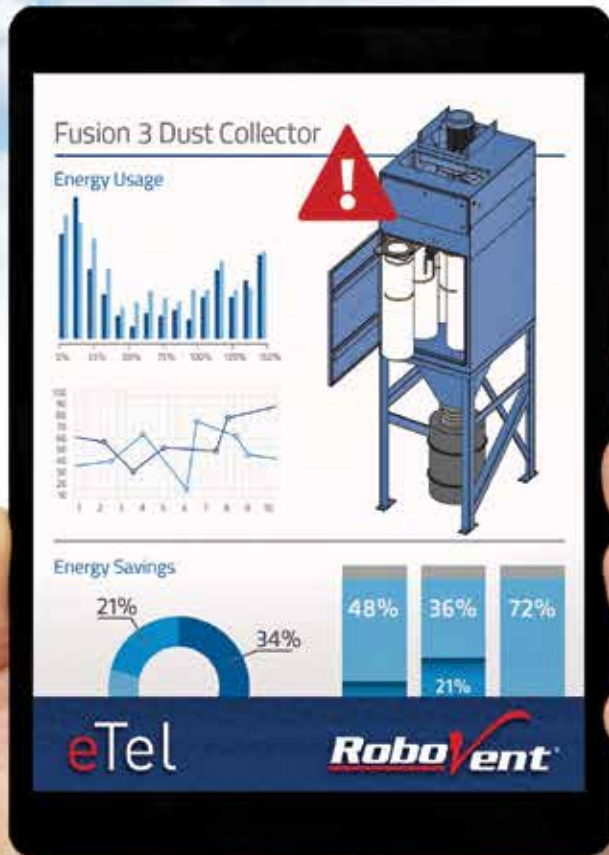
Real-time push notifications and alerts triggered when manual service is required.

Simple dashboard reports to show equipment efficiency and system performance metrics.

And view all of this from the palm of your hand, 24/7 – anywhere on the planet!

Stay focused on the important things — eTel will let you know when it needs your help.

Clean air has never been easier.



eTel
by RoboVent

888.ROBOVENT | ROBOVENT.COM

SEE IT LIVE. Visit RoboVent at FABTECH Chicago, Booth N18061, November 9-12, 2015 for the unveiling of this patent-pending technology.



NORTH AMERICA'S LARGEST METAL FORMING,
FABRICATING, WELDING AND FINISHING EVENT

NOVEMBER 9-12, 2015

McCormick Place, Chicago, IL USA

Fabricators & Manufacturers Association, Int'l.®
833 Featherstone Road
Rockford, IL 61107-6302



Scan code with your mobile device
to watch FABTECH in action!

Save \$50.

Register at fabtechexpo.com

Use Promo Code 

NORTH AMERICA'S LARGEST METAL FORMING, FABRICATING, WELDING AND FINISHING EVENT



**SEE YOU IN
CHICAGO!**