



VICTORINOX
SWISS ARMY

COMPANION FOR LIFE



COMMERCIAL CUTLERY
2013



NEW YORK CITY (USA), 2007

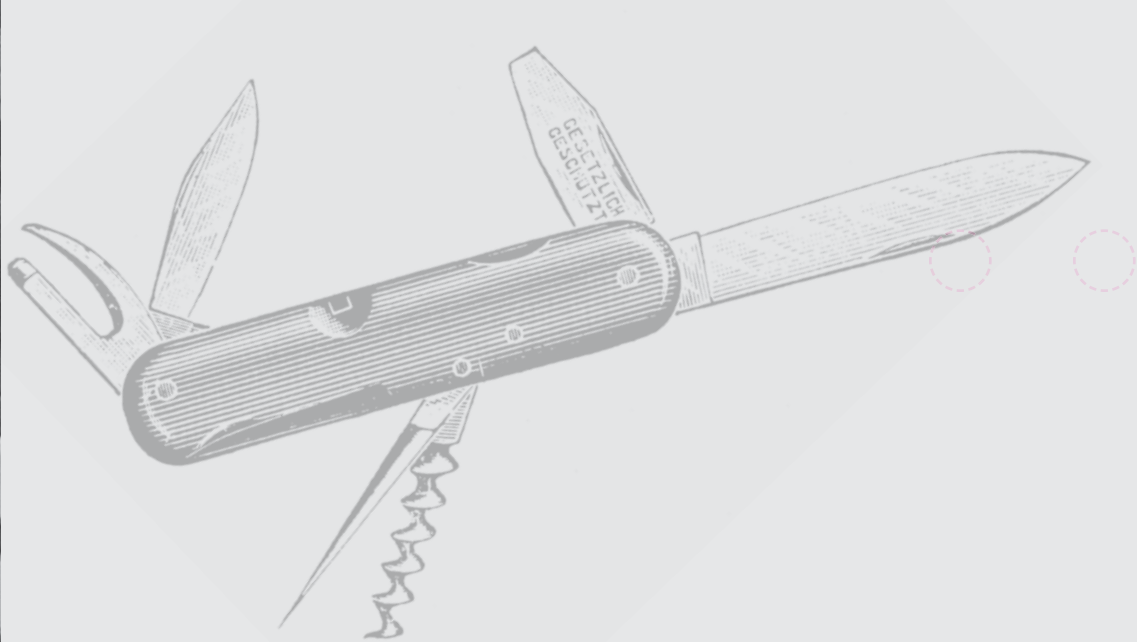
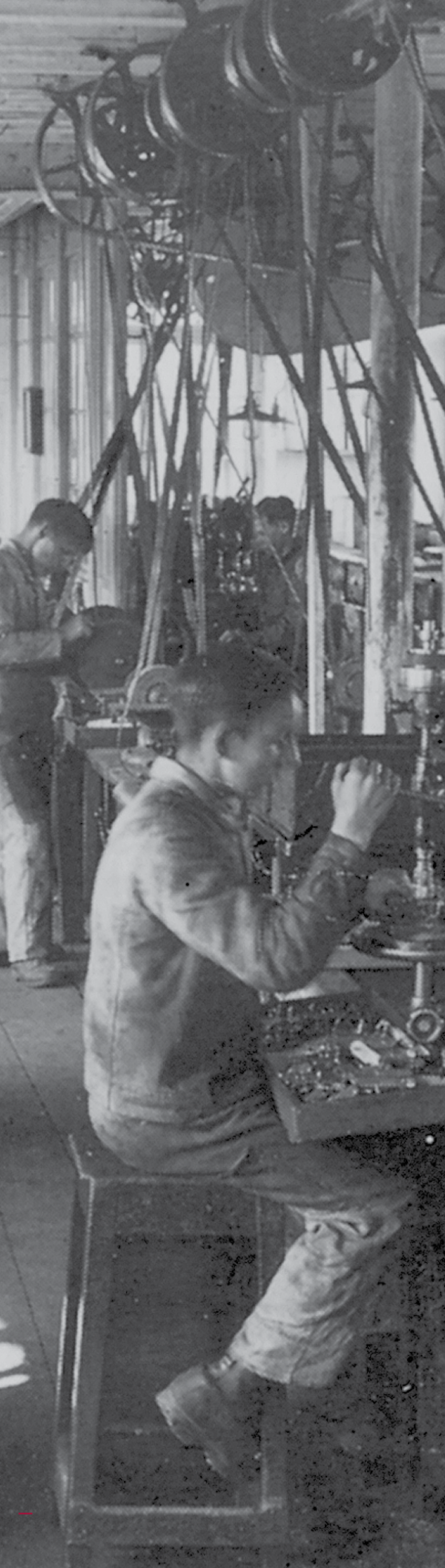
THE GIFT

“You’ll be able to make it with this!” With these words, my father gave me a black box of Victorinox knives for the start of my culinary training. I was 14 years old and wanted to be a chef more than anything in the world. These knives were my companions, day after day, around the globe. Through all of my training, the years in Switzerland, then to the USA starting at Campton Place Hotel in San Francisco, and finally to New York, at Eleven Madison Park Restaurant, I brought my knives with me. They saw me through difficult and successful days. I have achieved a lot with these knives, just like my father wanted.

Daniel Humm, April 2007

Victorinox products are a companion for life. What experiences have you had with Victorinox products? Share your story at victorinox.com





OVER 125 YEARS OF TRADITION AND HERITAGE

Victorinox Swiss Army products have accompanied people through life's adventures since 1884. Precise and elegantly engineered, our company is proud to represent the distinguished characteristics of our country through the manufacturing of knives. They are one of the key symbols of excellent Swiss quality and ingenuity.

Still today, the core values upon which our business and manufacturing is based, are as relevant as they were in 1897 when Karl Elsener invented the Original Swiss Army Knife: Functionality, innovation, iconic design and uncompromising quality. Victorinox Swiss Army creates products which are designed to be true companions for life. They are the ambassadors of our timeless Swiss values – as timeless as the classics you will discover on the following pages.

As time goes on, we focus our efforts on making good products even better; on changes to achieve improvement while maintaining the appeal of our classic designs. In this catalogue you will find the latest products from our range of household and professional knives.

Our products are the result of the dedicated work of 2,000 individuals who are part of the Victorinox Swiss Army family from around the world. It is the culmination of their contributions which make Victorinox Swiss Army products what they are: unique.

Carl Elsener Jr. & Carl Elsener Sr.

www.swissarmy.com

THE VICTORINOX EAGLE CREST



Product is made in Switzerland
by our Master Cutlers.



Non-Victorinox product that meets
our exacting quality standards.

FIBROX®	5
ULTRA GRIP	5
BLACK FIBROX®	5
COLOR CODED FIBROX®	11
PARING KNIVES	15
ROSEWOOD	19
FORGED	25
SPECIALTY KNIVES & TOOLS	29
ACCESSORIES	33
TURNERS	33
HIGH HEAT TURNERS	35
SPATULAS	36
FORKS	36
KNIFE SHARPENERS	37
STEELS / EDGE MAINTENANCE	39
SHEARS	41
CHEF'S UTENSILS & TOOLS	42
KNIFE STORAGE	43
CULINARY SETS, KITS, ROLLS & CASES	45
GIFT SETS	48
BLOCK SETS	51
GLOVES	53
DISPLAYS / COUNTER CARDS	55
SKU GLOSSARY	58



BLACK FIBROX®

Victorinox Swiss Army has been crafting fine cutlery since the late 1800's. Our Fibrox professional line has become the tool of choice for professionals and has consistently received high accolades in industry product testing.



NEW ULTRA GRIP
Introducing a new knife that features a unique handle design to help eliminate hand fatigue.

Victorinox Swiss Army worked closely with a well-known meat processing plant to create this ergonomic handle. Comments from members of the test team included, "I love it!" and "I can feel the stress leave my wrist".



Superflex blades are used exclusively to remove the tender loin fillet during plant processing and are commonly known in the business as a "tender puller knife".

- Fibrox® handle with ergonomic grip for comfort
- Textured Ultra Grip handle for superior slip-resistance
- Ergonomic handle design for improved control and cutting torque

ULTRA GRIP – BONING COLLECTION



5.6603.15X 6" Blade
Ultra Grip handle, curved, semi-stiff blade



5.6613.15X 6" Blade
Ultra Grip handle, curved, flexible blade



5.6613.12X 5" Blade
Ultra Grip handle, curved, flexible blade



5.6663.15X 6" Blade
Ultra Grip handle, curved, super flexible blade

BONING Straight, Wide Blade



40614 5" Stiff Blade



40615 6" Stiff Wide Blade



40612 6" Stiff Extra Wide Blade



41510 7" Stiff Wide Blade



40812 6" Stiff, Wide, Granton Blade

BONING Straight, Narrow Blade



40512 5" Flexible Blade



40518 5" Semi-flexible Blade



40510 5" Stiff Blade



40513 6" Flexible Blade

* Rated best boning knife by leading gourmet consumer magazine.

BONING Straight, Narrow Blade



40519 6" Semi-flexible Blade



40511 6" Stiff Blade

BONING Rabbit / Utility Knife



40811 4" Rabbit/Utility

BONING Curved Blade



40516 5" Flexible Blade



40514 5" Semi-Stiff Blade



40517 6" Flexible Blade



40515 6" Semi-Stiff Blade



40610 6" Stiff Wide Blade



5.6603.15RS 6" Curved Blade, Blunt Tip

BONING Curved Blade



42610 6" Stiff, Wide, Granton Blade

CHEF'S Straight Edge



40552 5" Blade
1¼" blade width at handle



40570 6" Blade
1¼" blade width at handle



40523 7½" Blade
1 ½" blade width at handle



40520 8" Blade
2" blade width at handle

* Rated best Chef by leading gourmet consumer magazine



40524 9" Blade
1½" blade width at handle



40521 10" Blade
2¼" blade width at handle



44521 10" Blade, Blunt Tip
2¼" blade width at handle

CHEF'S Straight Edge



40522 12" Blade
2¼" blade width at handle

CHEF'S Wavy Edge



40556 5" Blade
1¼" blade width at handle



40720 7½" Blade
1½" blade width at handle



40721 10" Sandwich Wavy / Straight Edge
2" blade width at handle

SANTOKU



41529 7" Granton Blade
1½" blade width at handle

BREAD Wavy Edge



40548 7" Blade, Slant Tip
1½" blade width at polypropylene handle



40549 8" Blade, Slant Tip
1½" blade width at handle

BREAD Wavy Edge



40547 10¼" Curved Blade
1¼" blade width at handle

* Rated best bread knife by leading gourmet consumer magazine.



41694 7½" Offset Blade
1½" blade width at handle



40550 9" Offset Blade
1½" blade width at handle



41695 10" Curved Blade
1¼" blade width at handle

SLICING Straight Edge



40652 8" Blade, Churrasco
1½" blade width at handle



40557 9" Blade, Churrasco
1½" blade width at handle



40558 12" Blade, Churrasco
2" blade width at handle



40551 10¼" Curved, Straight Edge, Super Slicer
1¼" blade width at handle

SLICING Straight Edge



40542 10 1/4" Blade
1 1/4" blade width at handle



40543 12" Blade
1 1/4" blade width at handle



40544 14" Blade
1 1/4" blade width at handle



40633 10" Granton Blade
1 1/2" blade width at handle



40643 12" Salmon Slicer, Granton Blade, Flexible
1" blade width at handle



40645 12" Wide, Granton Blade
1 1/2" blade width at handle

* Rated best carving knife by leading gourmet consumer magazine.



40646 14" Wide, Granton Blade
1 1/2" blade width at handle

SLICING Wavy Edge



40640 10" Blade
1 1/4" blade width at handle



40641 12" Blade
1 1/4" blade width at handle



40642 14" Blade
1 1/4" blade width at handle

FLANK KNIFE



41511 7" Stiff Blade
1 1/8" blade width at handle



40534 8" Stiff Blade
1 1/8" blade width at handle

CARVING Straight Edge



40540 10" Semi-flexible Blade
1 1/8" blade width at handle



40541 12" Semi-flexible Blade
1 1/8" blade width at handle

CARVING Wavy Edge



41540 8" Semi-flexible Blade
1 1/8" blade width at handle



40546 10" Semi-flexible Blade
1 1/8" blade width at handle

FILLET / FISHING Straight Blades



40613 8" Flexible Blade



40714 6" Semi-flexible Blade



40715 7" Straight, Flexible Blade



40616 7" Semi-flexible Blade



40710 7" Straight Stiff Blade



40711 8" Semi-flexible Blade

POULTRY Small Handle



41810 3 1/4" Slant Point Vent Boning



41811 3 3/4" Straight Vent Boning



41812 4 1/2" Boning

POULTRY Small Handle



5.5906.08S9 3 1/4" Slant Point, Vent Boning
Orange handle



5.5906.09S9 3 3/4" Straight Vent, Boning
Orange handle



5.5906.11S9 4 1/2" Boning
Orange handle

POULTRY Medium Handle



41820 3" Slant Point Vent Boning



41821 3 3/4" Straight Vent Boning



41822 4 1/2" Boning

POULTRY Chicken Deboning Knife



40713 3 3/4" Narrow Straight Blade

SKINNING



40532 5" Lamb Skinning Blade

SKINNING



40535 5" Beef Skinning Blade



40536 6" Beef Skinning Blade



40639 6" Beef Western Skinning Blade



40730 6" Stiff Narrow Blade

BUTCHER Straight Blade



40635 7" Blade



40533 8" Blade, Granton Blade



42531 8" Butcher Straight Blade



40530 10" Blade



40638 10" Granton Blade

BUTCHER Straight Blade



40531 12" Blade



40636 12" Granton Blade

CIMETER



40539 10" Blade



40634 10" Granton Blade



40630 12" Blade



40632 12" Granton Blade



41534 14" Blade

BREAKING



40537 8" Blade



40538 10" Blade

H.A.A.C.P. COLOR CODED HANDLES

These colors are recognized by the H.A.A.C.P. for the following uses:



Red = Meat
 Blue = Fish
 Green = Produce
 White = Dairy / Cheese
 Yellow = Poultry

CHEF'S



40421 8" Blade
2" blade width at handle



40451 8" Blade
2" blade width at handle



40471 8" Blade
2" blade width at handle



5206720 8" Chef's
2" blade width at handle

CHEF'S



40424 10" Blade
2¼" blade width at handle



40454 10" Blade
2¼" blade width at handle



40474 10" Blade
2¼" blade width at handle



5200725 10" Chef's
2⅞" blade width at handle

BREAD Wavy Edge



40453 10¼" Blade
1¼" blade width at handle



40483 10¼" Blade
1¼" blade width at handle



5293726 10¼" Bread
1¼" blade width at handle

BONING



5600715 6" Stiff Boning, Extra Wide
1 1/4" blade width at handle



5640715 6" Stiff Boning, Narrow

BONING Curved



40420 6" Semi-Stiff Blade



40450 6" Semi-Stiff Blade



40470 6" Semi-Stiff Blade



43517 6" Flexible Blade



5660715 6" Semi Stiff Blade

BUTCHER Straight Blade



40472 10" Straight Blade

CIMETER



40425 10" Blade



40475 10" Blade



5730725 10" Cimeter



Mirrored polish finish on high carbon stainless steel blade

World renowned sharpness, laser tested

NSF seal of quality means knives are made to the highest sanitary standards

Textured handle is lightweight and slip resistant

Patented Fibrox handles are hygienic and dishwasher safe

- Preference of culinary professionals worldwide
- Manufactured in Switzerland
- Exceptional value
- Lifetime warranty



PARING KNIVES

These versatile cutting tools, with their short blades are great for small precision cuts where control is essential. The paring knife is a staple in every kitchen and will quickly become your favorite tool.



PARING Small Handle, Spear Point



40600 3¼" Blade, Straight Edge



40807 3¼" Blade, Straight Edge



40601 3¼" Blade, Straight Edge



40602 3¼" Blade, Wavy Edge



42602 3¼" Blade, Wavy Edge



40603 3¼" Blade, Wavy Edge



42604 4" Blade, Wavy Edge

PARING Small Handle, Sheep's Foot, Straight



40806 3¼" Blade



40604 3¼" Blade



42603 2¼" Blade

PARING Small Handle, Sheep's Foot, Wavy Edge



42807 3¼" Blade



40605 3¼" Blade

PARING Decorating



40606 2¼" Bird's Beak

PARING Large Handle, Spear Point



40508 3¼" Blade, Straight Edge



40509 3¼" Blade, Wavy Edge



40501 4" Blade, Straight Edge



40809 4" Blade, Straight Edge



40502 4" Blade, Straight Edge



42605 4" Blade, Straight Edge

TABLE STEAK KNIVES

Wavy Edge



46789 4½" Blade

(sold in six-pack only)



40505 3¾" Blade



42502 4¼" Blade



40503 4¼" Blade



40504 4¼" Blade



40553 4¼" Blade



42799 5" Blade

(sold as 12-pack only)

SLICE & SERVE

Wavy Edge



40506 4½" Blade

PARING SETS



48042 3-Piece Paring Set

Includes:

- 40600 3¼" Parer, Spear Point
- 40606 2¼" Parer, Bird's Beak
- 40602 3¼" Parer, Wavy Edge, Spear Point



49890 3-Piece Kitchen Set

Includes:

- 40806 3¼" Parer, Sheep's Foot
- 40600 3¼" Parer, Spear Point, Straight
- 40503 4¼" Tomato Knife, Round Tip, Wavy



49765 3-Piece Paring Set

Includes:

- 40807 3¼" Parer, Straight
- 42602 3¼" Parer, Wavy
- 42603 2¼" Parer, Sheep's Foot, Straight



46551 4-Piece Utility Set (Red Handles)

Includes:

- 40502 4" Utility Knife
- 40603 3¼" Parer, Wavy, Spear Point
- 40601 3¼" Parer, Spear Point
- 6" x 9" Cutting Board

PARING DISPLAY PACKS



46654 Paring Display Pack – Black Handles

Two dozen Victorinox paring knives (40508 black), 3¼" blade, straight edge, spear point



46661 Paring Display Pack – White Handles

Two dozen Victorinox paring knives (40807 white), 3¼" blade, straight edge, spear point



46662 Paring Display Pack – Red Handles

Two dozen Victorinox paring knives (40603 red), 3¼" blade, wavy edge, spear point

PARING DISPLAY RACK



49042 3-Piece Paring Knife Display

Contains 24 units (48042)



ROSEWOOD

Traditional and elegant, our Rosewood Collection doesn't get by on good looks alone. The collection features our famously sharp, long-lasting blades in sizes, shapes and configurations to serve all of your cutting needs.



CHEF'S Straight Edge



40029 6" Blade
1 1/4" blade width at handle



40024 7" Blade
1 1/2" blade width at handle



40026 7 1/2" Stiff Blade
1 1/2" blade width at handle



40020 8" Blade
2" blade width at handle



40021 10" Blade
2 1/4" blade width at handle



40022 12" Blade
2 1/4" blade width at handle

CHEF'S Wavy Edge



40025 7" Blade
1 1/2" blade width at handle



40027 7 1/2" Stiff Blade
1 1/2" blade width at handle



40023 10" Sandwich Wavy/Straight Edge
2 1/4" blade width at handle

SANTOKU



41527 7" Granton Blade
1 1/2" blade width at handle

BREAD Wavy Edge



41290 7 1/2" Offset Blade, Rosewood Handle
1 1/2" blade width at handle



40048 7" Blade, Slant Tip
1 1/8" blade width at handle



40049 8" Blade, Slant Tip
1 1/8" blade width at handle



40040 10 1/4" Curved Blade
1 1/4" blade width at handle

SLICING Wavy Edge



40144 10" Blade, Wavy
1 1/4" blade width at handle



40146 12" Blade
1 1/4" blade width at handle



40148 14" Blade
1 1/4" blade width at handle

SLICING



40143 10" Blade, Straight
1¼" blade width at handle



40145 12" Blade, Straight
1¼" blade width at handle



40147 14" Blade, Straight
1¼" blade width at handle



40142 10" Granton Blade
1¼" blade width at handle



40149 10" Granton Blade
1½" blade width at handle



40240 12" Wide, Granton Blade
1½" blade width at handle



40139 12" Granton Blade
1¼" blade width at handle



40141 12" Granton Blade
1" blade width at handle

SLICING



40251 14" Granton Blade
1½" blade width at handle

CARVING



40034 8" Stiff Blade
1½" blade width at handle



40044 10" Semi-flex Blade
1⅛" blade width at handle



40311 7" Fillet Flexible Blade



40117 7" Fillet Blade

CARVING Wavy Edge



40041 10" Blade
1⅛" blade width at handle

PARING



40001 3¼" Blade, Spear Point,
Straight Edge, Small Handle

PARING



40100 3¼" Blade, Spear Point,
Straight Edge, Large Handle



40000 3¼" Blade, Spear Point, Wavy Edge



40007 2½" Birds Beak, Straight Edge,
Light Wood Handle

STEAK



40002 4¾" Blade, Spear Point, Straight Edge



40003 4¾" Blade, Wavy Edge, Spear Point, Wavy Edge



40004 5¼" Blade, Wavy Edge, Blunt Tip

BONING Straight, Narrow



40012 5" Stiff Blade



40014 5" Flexible Blade

BONING Straight, Narrow



40013 6" Stiff Blade



40015 6" Flexible Blade

BONING Curved



40018 5" Flexible Blade



40016 5" Semi-Stiff Blade



40019 6" Flexible Blade



40017 6" Semi-Stiff Blade



40118 6" Wide, Semi-Stiff Blade



40212 6" Wide, Stiff, Granton Blade

BONING Straight, Wide, Stiff

40112 5" Blade

40113 6" Blade

40114 7" Blade
BONING Straight, Extra Wide, Stiff, Heavy

40010 6" Blade
BUTCHER Straight Blade

40135 8" Blade

40138 14" Blade
CIMETER

40131 10" Blade
CIMETER

40030 10" Granton Blade

40133 12" Blade

40232 12" Granton Blade

40134 14" Blade
BREAKING

40039 8" Blade

40130 10" Blade
SKINNING

40230 5" Lamb Skinning Blade

40038 6" Beef Skinning Blade
VICTORINOX KNIFE CONSTRUCTION
THE STAMPED KNIFE
Blade

Stamped out from steel sheets and steel rolls

Spine of the Blade
Rivets

Used for attaching the handle to the knife tang

Edge

The conical grinding process ensures an extremely sharp edge

The Eagle Emblem

Represents Victorinox quality and a lifetime warranty

Rear Hand Protection

The knife is always safely held in the hand

THE FORGED KNIFE
Full Tang Construction

One single piece running all the way into the handle

The Bolster

The center piece between blade and handle

Bolsterless

There is no bolster edge for ease of use and sharpening

Ergonomically Designed

To provide optimum weight, balance and comfort



FORGED

A time-honored craft, forged blades employ handcraftsmanship and produce the strongest and some of the sharpest blades. Forged knives are produced when a steel bar is heated to approximately 2,000° F and set into a mold specifically manufactured for the knife style and primary form.



FORGED 

VICTORINOX PREMIUM FORGED POM Handle
Hot dropped fully forged; bolsterless



7.7303.08 3" Shaping



7.7203.08 3" Parer



7.7203.10 4" Parer



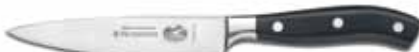
7.7203.12 4½" Steak



7.7203.12W 5" Steak, Wavy Edge



7.7203.15 6" Utility / Sandwich
1" blade width at handle



7.7403.15 6" Wide Utility / Chef's
1¼" blade width at handle



7.7303.15 6" Boning



7.7323.17 7" Santoku, Granton Blade
1¾" blade width at handle



7.7213.20 8" Flexible Fillet



7.7203.20 8" Slicer
1¼" blade width at handle



7.7403.20 8" Chef's
1¾" blade width at handle



7.7403.25 10" Chef's
1¾" blade width at handle



7.7433.21 8" Offset Bread
1½" blade width at handle



7.7433.23 9" Bread
1¼" blade width at handle

VICTORINOX PREMIUM FORGED POM Handle

Hot dropped fully forged; bolsterless



7.7223.26 10" Slicer, Granton Blade



87688 9" Honing Steel

VICTORINOX TRADITIONAL FORGED POM Handle

Hot dropped fully forged; traditional bolster



7.7183 3" Shaping



7.7113.09 3 1/2" Parer, Spear Point, Straight



7.7113.10 4" Utility, Straight



7.7113.15 6" Utility, Straight



41799 5" Utility, Wavy, Spear Tip
Stamped



7.7153.12 5" Steak, Spear Point, Wavy

VICTORINOX TRADITIONAL FORGED POM Handle

Hot dropped fully forged; traditional bolster



7.7153.15 6" Boning, Flexible



7.7123.20 8" Chef's
1 3/4" blade width at handle



7.7223.17 7" Santoku, Granton Blade
1 3/4" blade width at handle



7.7123.25 10" Chef's
1 3/4" blade width at handle



7.7173.21 8" Bread



7.7113.20 8" Slicer
1 1/4" blade width at handle



7.7113.25 10" Slicer
1 1/4" blade width at handle



Ergonomic triple rivet handle design

Three handle sizes for precise functionality

Plastic over molded handles will hold their shape and not crack or separate from the blade

Single piece, full tang construction

Bolsterless edge for use of entire blade and ease of Honing

Forged in Germany and finished in Switzerland to achieve Victorinox precision quality, polish, finish and famous edge

Traditional hot drop forging creates superior elasticity and maximum strength

High carbon no stain steel provides maximum sharpness and edge retention

Ice tempered to create a hardened blade that will sustain its sharpness longer



SPECIALTY KNIVES & TOOLS

Known for versatility, Victorinox offers a wide range of Chef tools for a variety of applications.



SWISS ARMY KNIVES



- 88351 Side Chef, Red**
Implements include:
- One-Hand Serrated Locking Blade
 - Corkscrew
 - Can Opener with Small Screwdriver
 - Bottle Opener with Large Locking Screwdriver
 - Wire Stripper
 - Reamer
 - Key Ring



- 84886 Side Chef, Black**
Implements include:
- One-Hand Serrated Locking Blade
 - Key Ring
 - Tweezers
 - Toothpick
 - Clip



Clip on back



“My Side Chef is with me at all times. Anytime I need to open a box, cut a packing strap or slit a large packing envelope, I use it instead of grabbing a knife reserved for food. It stays sharp, it is easy to clean, and I wear it conveniently on my belt. I would feel lost without it.”

— Chef Wilfred Beriau
CCE, CEC, AAC

FOLDING KNIVES



- 40990 2 1/2" Blade, Alox Handle**
Also used as a bread baker's knife for scoring dough



- 40560 2 1/2" Blade**

OYSTER KNIVES



- 44691 2 1/8" Oyster Knife**

SPECIALTY KNIVES

OYSTER KNIVES



- 44692 2 3/4" Providence Style**
Red SuperGrip handle



- 44693 2 3/4" New Haven Style, Bent Tip**
Red SuperGrip handle



- 44694 3" Boston Style**
Red SuperGrip handle



- 44695 4" Galveston Style**
Red SuperGrip handle



- 44696 4" Boston Style, Regular**
Red SuperGrip handle

CLAM KNIVES



- 286.9006.08 3 1/4" Clam Knife, Narrow**
NEW



- 286.9007.09 3 1/2" Clam Knife, Wide**
NEW

LOBSTER / FISH SPLITTER



- 40028 12 3/4" Blade, Extra Heavy, Rosewood Handle**
3" blade width at handle

CHEESE KNIVES



40191 8" Butter & Cheese Knife, Rosewood Handle



40194 12" Double Handle, Fibrox Handles



40192 12" Double Handle, Rosewood Handles



40195 14" Double Handle, Fibrox Handles



40193 14" Double Handle, Rosewood Handles

UTILITY / VEGETABLE Produce



40101 4" Blade, Polypropylene Handle

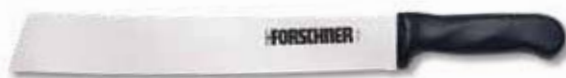


40102 6" Blade, Polypropylene Handle

WATERMELON KNIVES



40190 12" Blade, Wood Handle



40286 12" Blade, Polypropylene Handle

CLEAVERS Rosewood



40093 Household, 1½ lbs., 7" x 3½"

CLEAVERS Fibrox®



40590 Restaurant, 1 lb., 7" x 2½"

CLEAVERS Wood



40091 1 lb., 7" x 3"



40090 Chinese, Curved, 8" x 3"

CLEAVERS Polypropylene



41591 15 oz., 7" x 3"



41589 Chinese Curved, 8" x 3"

PRECISE SLICE



45960 8¼" Heavy Duty Blade, Right-handed, Plastic Handle



45961 8¼" Heavy Duty Blade, Left-handed, Plastic Handle



45963 Right-Hand Replacement Guide



45964 Left-Hand Replacement Guide

BONE SCRAPERS



40693 Square, White Polypropylene

PIZZA TOOLS



41594 4" Pizza Wheel, Polypropylene Handle

SHEATHS



30215 Leather, accepts 6" Blade

30216 Leather, Accepts 8" Blade (not shown)



40993 Paring Pouch with Clip,
Nylon, Accepts 3¼" Blade



ACCESSORIES

As any Chef knows, these are the tools you can't live without.



TURNERS

TURNERS White Propylene



40429 2½" x 2½" Mini Turner



40430 2" x 4" Pancake Turner



40431 2½" x 4" Pancake Turner



40437 3" x 6" Grill Turner



40438 3" x 6" Round Corner, Grill Turner



40439 4" x 8" Grill Turner



40442 3" x 8" Grill Turner



40443 3" x 8" Perforated Turner



40445 4" x 5" Hamburger Turner, Stiff, 3 Sides Beveled

TURNERS White Propylene



40446 5" x 6" Hamburger Turner, Stiff, 3 Sides Beveled

TURNER Slotted, White Propylene



40435 3" x 6" Chef's Slotted Turner

PIE SERVERS White Propylene



40432 2½" x 4" Pie Server



40433 2½" x 4" Pie Server, Wavy Edge



40434 3" x 5" Cake Server

SANDWICH SPREADERS White Propylene



40427 3½" Sandwich Spreader



40428 3½" Sandwich Spreader, Wavy Edge

SCRAPER White Propylene



40448 3" x 6" Dough Scraper

TURNERS

Walnut



40390

2" x 5 ¼" Turner



40404

3" x 5" Turner Square End, Flex



40405

3" x 8" Turner Square End



40298

3" x 7" Turner Square End



40296

3" x 8" Turner



40407

4" x 5" Hamburger Turner, Stiff, 3 Sides Beveled



40408

5" x 6" Hamburger Turner, Stiff, 3 Sides Beveled

TURNERS

Walnut



41092

4" x 8" Turner



40297

3" x 8" Turner

PIE SERVERS

Walnut



41612

3" x 5" Wood Handle



40391

5½" Walnut Handle



40415

3" x 6" Chef's Slotted Fish Turner, Walnut Handle



40403


4" x 9" Chef's Slotted Turner, Jumbo

R.H. FORSCHNER

NEW

HIGH HEAT TURNER COLLECTION

Introducing the R.H. Forschner line of accessories. This new collection features must-have tools and accessories for professionals backed by the strength of the R.H. Forschner brand.

- Self-ventilating, ergonomic handle withstands heat up to 450° F.
- Durable, professional stainless steel blade
- NSF certified 



TURNER

Hight Heat



KT63681T

8" x 3" Turner, Perforated



KT63682

8" x 3" Square Turner



KT63683T

8" x 3" Turner



KT63685T

6" x 3" Turner, Square End

HIGH HEAT TURNERS



TURNER

Hight Heat



KT63687

5" x 4" Hamburger Turner



KT63688

8" x 4" Turner



KT63725

6½" x 3" Turner, Slotted / Fish



KT63731

4" x 3" Turner, Flex



KT63732

5" x 3" Turner, Beveled



KT63330

12" Fork

SPATULAS Polypropylene



40598 4" Spatula



40599 6" Spatula



40690 8" Spatula



40691 6" Offset Spatula / Turner

SPATULAS Rosewood



40394 10" Spatula



40395 12" Spatula

SPATULAS Rosewood, Offset



40397 10" Offset Spatula



40398 12" Offset Spatula

CARVING FORKS Forged



40199 10" Overall Length, Rosewood Handle, Stainless Steel 4½" Tines



40290 11" Overall Length, Rosewood Handle, Stainless Steel 6" Tines



7.7133.18 11" Overall Length, POM Handle, Forged Stainless Steel 6" Tines



87638 10½" Overall Length, Forged Stainless Steel 5" Tines

CARVING FORKS Stamped



40737 10½" Overall Length, Polypropylene Handle, Stainless Steel 4½" Tines

POT FORKS Forged



40198 10" Overall Length, Rosewood Handle, Stainless Steel

POT FORKS Stamped



40596 14" Overall Length, Polypropylene Handle

COOK FORKS Rosewood



40417 12½" Wood Handle



40418 12" Heavy Duty Wood Handle



40419 14" Heavy Duty Wood Handle

COOK FORKS Polypropylene



40460 12" Heavy Duty White Polypropylene Handle



40461 14" Heavy Duty White Polypropylene Handle



40595 12" Overall Length, Full Tang, Polypropylene Handle



40459 12½" White Polypropylene Handle

SHARPENERS Honing Systems, Honing Stones



40997 11½" Multi-Oilstone Honing System – IM313
Holds stone measuring 11½"W x 2½"H x ½"D

Kit includes: 1 reservoir, 1 coarse crystolon, 1 medium crystolon, 1 fine india honing stone and 1 pint of specially formulated pharmacopia grade mineral oil



40998 Crystolon Single Grit, Coarse Silicon Carbide Stone – JM3
11½"W x 2½"H x ½"D

Replacement stone for 40997



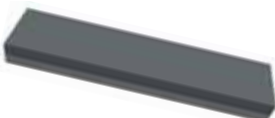
40999 Crystolon Single Grit, Medium Silicon Carbide Stone – JM6
11½"W x 2½"H x ½"D

Replacement stone for 40997



40994 India Single Grit, Fine Aluminum Oxide Stone – IM9
11½"W x 2½"H x ½"D

Replacement stone for 40997



42991 Crystolon Bench Coarse/Fine Silicon Carbide Combination Stone – JUM3
11½"W x 2½"H x ½"D



42990 Crystolon Bench Coarse/Fine Silicon Carbide Combination Stone – JB8
8"W x 2"H x 1"D

41010

11½" 3-Way Honing System

Includes 1 pint of honing oil



41015

Coarse Replacement for 41010

11½"W x 2½"H x ½"D



41016

Medium Replacement for 41010

11½"W x 2½"H x ½"D



41017

Fine Replacement for 41010

11½"W x 2½"H x ½"D



41999

India Bench Coarse/Fine Aluminum Oxide Combination Stone – IB8

8"W x 2"H x 1"D



41998

Economy Bench Quick Cut Coarse/Fine Abrasive Combination Stone – UPB8

8"W x 2"H x 1"D



41996

Specially Formulated Pharmacopia Grade Mineral Oil – XB5

1 Pint



41997

Specially Formulated Pharmacopia Grade Mineral Oil – XB2

1 Quart



49000

Firestorm Ceramic Manual, Two Stage Honing Tool



49002

Handheld Sharpener, Tungsten Carbide Blade



49018

Handheld Sharpener Display

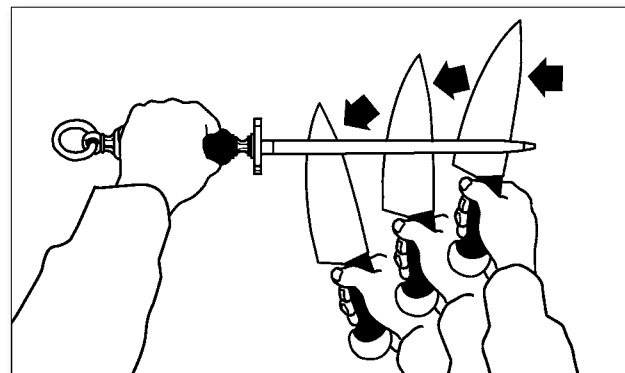
Contains 18 of 49002

8½"H x 13½"W x 8½"D



49003

3Pass Edge Maker System



HOW TO "STEEL" A KNIFE

- Hold the steel firmly in your hand with the guard positioned to stop the blade should it slip.
- Hold the knife in your other hand and place on top part of steel as shown.
- Raise back of blade one-eighth inch.
- Now, moving the blade only, draw it across the steel in an arching curve, pivoted at your wrist. The blade tip should leave the steel about two-thirds of the way down.
- Repeat the same action with the blade on the bottom side of the steel. Always maintain the same pressure and angle on both sides of the steel.
- Repeat five or six times.

PACKER / TRIMMER STEELS



40589

5" Trimmer Blade, Regular Cut



40680

7" Trimmer Blade Regular Cut



41981

7½" Continental Cut

PACKER / PROCESSOR STEELS



40580

10" Regular Cut, Round



40581

10" Smooth Cut, Round



40587

10" Semi-polished Cut, Round



40583

10" Polished Cut, Round



40683

10" Polished Cut, Round

SPECIALTY STEELS



40687

9" Regular Cut, Round



40582

10" Combination Cut



40585

12" Combination Cut



40181

12" Helical Cut, Round



STEELS

BUTCHER / CHEF STEELS Plastic Handle



40584 12" Regular Cut, Round



40586 14" Regular Cut, Round

BUTCHER / CHEF STEELS Wood Handle



40083 10" Regular Cut, Round, Full Tang, Chrome Finish



40084 12" Regular Cut, Round, Chrome Finish



40085 12" Fine Cut, Round, Chrome Finish



40180 14" Fine Cut, Round, Chrome Finish



40089 14" Regular Cut, Round, Chrome Finish

DIAMOND STEELS Diamond, Plastic Handle

Diamond steels will actually remove metal from the knife blade. they can quickly put an edge on a knife that cannot be sharpened with a regular steel.



40688 10" Diamond Oval, Economy Hollow Core



40689 12" Diamond Oval, Economy Hollow Core



40782 12" Diamond Oval, Solid Core



40783 12" Diamond Round, Solid Core

ALL PURPOSE SHEARS Polypropylene Handle



87771 4" Kitchen Shear with Bottle Opener



87770 4" Kitchen Shear with Bottle Opener



87781 9" Paper Shear



40555 3" Stainless Steel Locking Blade



87777 6" ClipPoint



87779 8½" Bent Shear, Stainless Steel

SHEARS



ALL PURPOSE SHEARS Polypropylene Handle



45903 4" Blade, Locking Handle, Hammered Textured
48884 Replacement Spring

KITCHEN SHEARS Polypropylene Handle



45898 3" Stainless Steel Blade,
Rounded safety tip



45896 3" Stainless Steel Blade



CHEF UTENSILS & TOOLS

DECORATING KNIVES



41896 4" Multiple Edge Decorating Knife
Polypropylene Handle



41895 4" Fruit Decorator
Polypropylene Handle

DOUBLE MELON BALLERS



40491 Wood Handle



40897 Polypropylene Handle

PEELERS



40490 2 1/4" Right handed, Wood Handle



40694 2 1/4" Double Edge, Polypropylene Handle



41891 2 1/4" Double Edge, Polypropylene Handle



7.6075 Victorinox Peeler,
Black

PEELERS



43793 Peeler, Black

ZESTERS



40493 Wood Handle



41893 Polypropylene Handle

CHANNEL KNIVES



40492 Wood Handle



40793 Polypropylene Handle

APPLE CORERS



41690 3" Corer, Polypropylene Handle
Barrel diameter: 3/4", 19mm

CAN OPENER Manual



43798 Can Opener, Black

Also available in:
43800 Red

KNIFE STORAGE



TOOL HOLDER



42999 Stainless Steel
23"W x 12"H x 1 1/4"D

SCABBARDS



43992 Double Pouch, Aluminum
Holds 5 or 6 knives up to 12" blade

43991 Double Pouch, Aluminum
Holds 5 or 6 knives up to 10" blade
(not shown)

MAGNETIC KNIFE BARS

Wide magnetic bars ensure a strong grip on all cutlery, including items
with off-center balance points



43993 Small Knife Bar
12"W x 1 5/8"H x 7/8"D



43994 Large Knife Bar
18"W x 1 7/8"H x 7/8"D

KNIFE BLOCKS



41490 10-Slot Hardwood Block
holds 9 knives and honing steel



40494 6-Slot Hardwood Block
Holds 5 knives and honing steel



41499L 9-Slot Hardwood Block
Holds 7 knives, kitchen shear
and honing steel



41501G 17-Slot Bamboo Block
– Premium grade ecologically
friendly bamboo block
– Natural finish to protect from
stains and spatters
– More durable than maple



KNIFE STORAGE

BLADE GUARD

NEW! Introducing our ruby translucent blade guards with side slot openings for easy cleaning.



ITEM #	DESCRIPTION	ITEM #	DESCRIPTION
49900	3½" x 1" x ¼"	49906	14½" x 1" x ¼"
49901	4½" x 1" x ¼"	49907	6½" x 2" x ¼"
49902	6½" x 1" x ¼"	49908	8½" x 2" x ¼"
49903	8½" x 1" x ¼"	49909	10½" x 2" x ¼"
49904	10½" x 1" x ¼"	49910	12½" x 2" x ¼"
49905	12½" x 1" x ¼"	49911	14½" x 2" x ¼"

BLADE SAFE™

Our exclusive BladeSafe features a universal design in four different sizes to meet most knife storage needs. Peggable



47300 BLADESafe
Holds 3" to 4½" blades



47301 BLADESafe
Holds 4" to 6" blades



47302 BLADESafe
Holds 6" to 8" blades



47303 BLADESafe
Holds 8" to 10" blades

EDGE-MAG Magnetic Blade Protector



- Exclusive to Victorinox
- Functional – easy to use – really works
- Universal design – fits most sizes and shapes
- Comes in four sizes – can be cut to fit most blades
- Hygienic – washable/dishwasher safe (low temp)
- Peggable packing makes merchandising easy

ITEM #	DESCRIPTION	QUANTITY
48310	7" Protector	3 per pack
48311	9" Protector	3 per pack
48312	10 ½" Protector	3 per pack
48313	12 ½" Protector	3 per pack
48344	Multi-Pack	1 of each size

Note: Edge-Mag is manufactured with multi-poled magnets that cannot magnetize your knife. Edge-Mag utilizes complex magnetic fields that alternate every ⅛ inch and cannot permanently align the poles in any magnetically receptive object.

CULINARY SETS & KITS



CULINARY ROLLS Rosewood Handles



46047 7-Piece Cutlery Roll
Includes:

- 3 ¼" Paring
- 5" Curved Boning
- 8" Bread
- 10" Meat slicer
- 10" Chef's
- 10" Honing Steel
- Canvas Knife Roll



CULINARY SETS

46035 12-Piece Executive Culinary Set
With Fibrox® handles includes:

- 3 ¼" Parer
- 6" Curved Boning
- 8" Wavy Bread
- 8" Chef's
- 10" Chef's
- 12" Slicer
- 4" Offset Spatula
- 11" Carving fork
- 12" Honing steel
- Peeler
- Melon Baller
- Washable Polyester Roll #44902 (shown empty on page 47)



46050 13-Piece Culinary Set
With Rosewood handles includes:

- 3 ¼" Parer
- 6" Wide Stiff Boning
- 7 ½" Chef's
- 10" Chef's
- 12" Slicer
- 10" Spatula
- 10" Pot Fork
- 14" Steel
- 10" French Whip
- Peeler
- Corkscrew
- Melon Baller
- Washable Polyester Roll #44955 (shown empty on page 47)



CULINARY ROLLS Fibrox® Handles



46149 7-Piece Cutlery Roll
Includes:

- 4" Paring
- 5" Curved Boning
- 8" Carving
- 8" Bread
- 10" Chef's
- 10" Honing Steel
- Canvas Knife Roll



GARNISHING KITS Polypropylene Handles

48997 8-Piece
Includes:

- Vegetable Peeler
- Butter Curler
- Channel Knife
- Melon Baller
- Decorating Knife
- Apple Corer
- Lemon Zester
- Vinyl Case



46550 7-Piece
Includes:

- Vegetable Peeler
- Decorating Knife
- Fruit Decorator
- Channel Knife
- Melon Baller
- Lemon Zester
- Canvas Roll





HARD CASES



46052 24-Piece Set with Rosewood Handles

46553 24-Piece Set with Fibrox Handles (not shown)

Gourmet Sets include:

- | | | |
|-----------------------|-------------------------|--|
| ■ Spatula | ■ Oyster Knife | ■ Double Melon Baller |
| ■ Bread Knife | ■ Honing Steel | ■ Larding & Tying Needles |
| ■ Chef's Knife, Large | ■ Apple Corer | ■ 10 Assorted Icing Funnels |
| ■ Butcher Knife | ■ Potato Peeler | ■ Forged Decorating Knife |
| ■ Lemon Zester | ■ Boning Knife | ■ Stainless Steel Shears |
| ■ Paring Knife | ■ Lemon Peeler | ■ Attache Case for the Professional Chef |
| ■ Chef's Knife, Small | ■ Flexible Fillet Knife | (Items not sold separately) |
| ■ Carving Fork | ■ Kullenschiff Slicer | |



46552 14-Piece Set with Fibrox Handles

46051 14-Piece Set with Rosewood Handles (not shown)

Gourmet Sets include:

- | | |
|-----------------------|--|
| ■ Spatula | ■ Honing Steel |
| ■ Bread Knife | ■ Paring Knife |
| ■ Chef's Knife, Large | ■ Chef's Fork |
| ■ Melon Baller | ■ Carving Knife |
| ■ Lemon Zester | ■ Chef's Knife, Small |
| ■ Lemon Peeler | ■ Attache Case for the Professional Chef |
| ■ Potato Peeler | (Items not sold separately) |
| ■ Boning Knife | |



43960 Universal Victorinox Attache Case

Victorinox exclusive culinary hard case. Designed by the experts for safe knife storage. Multi-purpose, hard grey polypropylene shell with locking feature. Unique top tray system with flexible clips to safely hold a minimum of 10 knives, any shape, style or size. The tray lifts to store additional tools, gloves, books or gadgets, etc. in the base. A wonderful storage system for the working professional or student.



44959 Soft Chef's Executive Case

- 18 – Slots
- 3 Zippered Compartments
- Denier with Shoulder Strap



CULINARY ROLLS & CASES

New and improved culinary cases and rolls sized and designed for your selection of Victorinox knives and accessories. All items are made with durable black polyester, PVC lining keeping them water resistant. Extremely durable with elasticized, double stitched pockets. Use damp sponge for cleaning ease.



44956 Black Polyester Tri-Fold Roll
Holds 8 knives up to 12" blade length. Additional pockets for extra accessories. Shoulder strap and business card holder included.



44902 Black Polyester Hard Tri-Fold Case
Holds 10 knives up to 12" blade length. Additional pockets for extra accessories. Shoulder strap and business card holder included.



44955 Black Polyester Tri-Fold Roll
Holds 12 knives up to 12" blade length. Additional pockets for extra accessories. Shoulder strap and business card holder included.



44953 Black Polyester Executive Knife Case
Holds 12 knives up to 12" blade length. Extra pockets for additional accessories and additional slots for your small garnishing tools. Shoulder strap and business card holder included.



44904 Black Polyester Roll
Holds 13 knives /tools up to 14" blade. Velcro straps. Shoulder strap and business card holder included.





GIFT SETS

STEAK SETS Rosewood Handles



46003 6-Piece Set
Includes:
■ 40003 4¾" Blade, Wavy, Spear Point



46059 6-Piece Set
Includes:
■ 40002 4¾" Blade, Spear Point



46058 6-Piece Set
Includes:
■ 40004 5¼" Blade, Wavy, Round, Blunt Tip

STEAK SETS Polypropylene Handles



47558 6-Piece Set
Includes:
■ 40503 4½" Wavy, Round Blunt Tip



47650 6-Piece Set
Includes:
■ 40505 4½" Blade, Wavy, Spear Point



48792 6-Piece Set
Includes:
■ 42789 4½" Large, Wavy, Spear Tip

STEAK SET POM Handles



46799 6-Piece Stamped Set
Includes:
■ 41799 5" Wavy, Spear Point

CHEF SET Rosewood Handles



46057 3-Piece Set
Includes:
■ 40044 10" Slicer
■ 40020 8" Chef's
■ 40002 4¾" Utility

47057 3-Piece Set (not shown)
Includes:
■ 40034 8" Slicer
■ 40020 8" Chef's
■ 40002 4¾" Utility

CHEF'S SETS Fibrox Handles



46892 3-Piece Set
Includes:
■ 40521 10" Chef's
■ 40534 8" Slicer
■ 40811 4" Parer



47892 3-Piece Set
Includes:
■ 40520 8" Chef's
■ 40534 8" Slicer
■ 40811 4" Parer

GIFT SETS



CHEF'S SET German Forged POM Handles



7.7143.3 3-Piece Chef's Set
Includes:
■ 7.7123.20 8" Chef's
■ 7.7113.20 8" Slicer
■ 7.7113.09 3¼" Parer

CARVING SET Rosewood Handles



47055 2-Piece Set
Includes:
■ 40034 8" Carving
■ 40198 10½" Pot Fork

PARING SET Polypropylene Handles



46652 6-Piece Set
Includes:
■ 4" Tomato
■ 3¼" Parer
■ 3¼" Wavy Parer
■ 3¼" Sheep's Foot Parer
■ 3¼" Sheep's Foot Wavy Parer
■ Peeler

VICTORINOX PREMIUM FORGED POM Handle

Hot dropped fully forged, bolsterless

7.7233.2
2-Piece Santoku Starter Set
Includes:

- 3" Parer
- 7" Santoku, Granton Blade



7.7253.2
2-Piece Starter Set
Includes:

- 3" Parer
- 8" Chef's



7.7243.2
2-Piece Starter Set
Includes:

- Carving Fork
- 8" Slicer



7.7243.3
3-Piece Chef's Set
Includes:

- 3" Parer
- 8" Slicer
- 8" Chef's



* Must be an Authorized Dealer for Forged Cutlery. All gift sets come in peggable box.

RETAIL PACKAGING & STEAK SETS



7.7243.4
4-Piece Steak Set
Includes:

- Four 4½" Steak



7.7203.4W
4-Piece Serrated Steak Set
Includes:

- Four 5" Serrated Steak



7.7243.6
6-Piece Steak Set
Includes:

- Six 5" Steak

VICTORINOX PREMIUM FORGED BLOCK SETS POM Handle

Hot dropped fully forged, bolsterless

7.7143.8
8-Piece Block Set
Includes:

- 3½" Parer
- 6" Boning
- 8" Bread
- 8" Slicer
- 8" Chef
- 10" Steel
- Kitchen Shear
- 9-Slot Block



7.7243.18
7-Piece Block Set
Includes:

- 3" Shaping
- 3" Parer
- 5" Serrated Tomato / Bagel
- 8" Chef's
- 9" Honing Steel
- Kitchen Shear
- 9-Slot Hardwood Block



7.7244.10
10-Piece Block Set
Includes:

- 3" Shaping
- 3" Parer
- 5" Serrated Tomato / Bagel
- 6" Utility
- 8" Chef's
- 8" Slicer
- 9" Bread
- 9" Honing Steel
- Kitchen Shear
- 17-Slot Bamboo Block



7.7243.17
17-Piece Block Set
Includes:

- 3" Parer
- 4½" Steak (8)
- 6" Boning
- 7" Granton Edge Santoku
- 8" Slicer
- 8" Chef's
- 9" Bread
- 9" Honing Steel
- Kitchen Shear
- 17-Slot Bamboo Block



7.7243.8
8-Piece Block Set
Includes:

- 3" Parer
- 6" Boning
- 8" Slicer
- 8" Chef's
- 9" Bread
- 9" Honing Steel
- Kitchen Shear
- 9-Slot Hardwood Block



7.7243.10
10-Piece Block Set
Includes:

- 3" Parer
- 5" Serrated Steak
- 6" Utility / Sandwich
- 6" Wide Utility / Chef's
- 7" Granton Edge Santoku
- 8" Slicer
- 9" Bread
- 9" Honing Steel
- Kitchen Shear
- 17-Slot Bamboo Block



ROSEWOOD HANDLES

46054
7-Piece Block Set

Includes:

- 3¼" Paring
- 6" Boning
- 8" Chef's
- 8" Bread
- 10" Slicer
- 10" Honing steel
- Slant Hardwood Block



40494 Slant block only, 6-slot

46153
11-Piece Block Set

Includes:

- 3¼" Paring
- 6" Boning
- 8" Chef's
- 8" Bread
- 10" Slicer
- 10" Honing steel
- 5 ¼" Steak knives, (4)
- Slant Hardwood Block



41490
Slant block only, 10-slot

FIBROX® HANDLES

48900
7-Piece Block Set

Includes:

- 3¼" Paring
- 4½" Tomato / Bagel
- 5" Mini Chef's / Utility
- 8" Chef's
- 9" Honing steel
- Kitchen Shear
- Slant Hardwood Block



41499L Slant block only, 9-slot

48891
8-Piece Block Set

Includes:

- 4" Paring
- 6" Boning
- 8" Chef's
- 8" Bread
- 10" Slicer
- 10" Honing steel
- Kitchen Shear
- Slant Hardwood Block



41499L Slant block only, 9 slot

ForschSHIELD™

ULTIMATE SHIELD 2



Features and Benefits

- Medium weight 10 gauge, steel reinforced knit construction
- Level 5 cut protection

BULK	PACKAGED	SIZE	WRIST BAND COLOR
83001	86001	X-Small	Gold
83002	86002	Small	Red
83003	86003	Medium	Green
83004	86004	Large	White
83005	86005	X-Large	Black

PERFORMANCE SHIELD 2



Features and Benefits

- Medium weight 10 gauge knit construction
- Level 4 cut protection

BULK	PACKAGED	SIZE	WRIST BAND COLOR
83501	86501	X-Small	Gold
83502	86502	Small	Red
83503	86503	Medium	Green
83504	86504	Large	White
83505	86505	X-Large	Black

PERFORMANCE SHIELD 3



Features and Benefits

- Heavy weight 7 gauge, knit construction
- Level 5 cut protection

BULK	PACKAGED	SIZE	WRIST BAND COLOR
83101	86101	X-Small	Gold
83102	86102	Small	Red
83103	86103	Medium	Green
83104	86104	Large	White
83105	86105	X-Large	Black

PERFORMANCE FIT 1



Features and Benefits

- Light weight 13 gauge knit construction
- Level 4 cut protection

BULK	PACKAGED	SIZE	WRIST BAND COLOR
83402	86402	Small	Red
83403	86403	Medium	Green
83404	86404	Large	White

PERFORMANCE FIT 1 – COLORED GLOVES



BULK	PACKAGED	COLOR
83300.O	86300.O	Orange
83300.G	86300.G	Green
83300.Y	86300.Y	Yellow
83300.P	86300.P	Pink

CHOOSING THE RIGHT GLOVE

	UltimateSHIELD 2	PerformanceFIT 1	PerformanceSHIELD 2	PerformanceSHIELD 3
CUT PROTECTION LEVEL 1 / low to 5 / high	ANSI level 5	ANSI level 4	ANSI level 4	ANSI level 5
DESCRIPTIVE WEIGHT	Medium	Light	Medium	Heavy
THREAD COUNT 13 / thin to 7 / thick	10 guage	13 guage	10 guage	7 guage
MATERIAL CONSTRUCTION	Stainless steel wire and Dyneema (HPPE)	Dyneema (HPPE), Spandex and other materials	Dyneema (HPPE) and industrial polyester	Dyneema (HPPE) and industrial polyester
COMFORT & DEXTERITY	Very good/good	Excellent	Excellent/very good	Excellent/very good
ANTI-MICROBIAL PROTECTION	Yes	Yes	Yes	Yes
APPLICATIONS	– General kitchen prep: chopping, peeling of vegetables, heavy duty meat boning, cutting and trimming – Safe handling of slicer and other food prep processing blades	– General kitchen prep: chopping, peeling of vegetables, medium duty meat cutting and trimming – Safe handling of slicer and other food prep equipment	– General kitchen prep: chopping, peeling of vegetables, medium duty meat cutting and trimming – Safe handling of slicer and other food prep processing blades	– General kitchen prep: chopping, peeling of vegetables, heavy duty meat boning, cutting and trimming – Safe handling of slicer and other food prep processing blades
SIZES	X-Small, Small, Medium, Large, X-Large	Small, Medium, Large – Stretch Fit eliminates the need for X-small and X-Large – Also available in "one size fits most", in orange, pink, green or yellow	X-Small, Small, Medium, Large, X-Large	X-Small, Small, Medium, Large, X-Large



STAINLESS STEEL MESH GLOVES



Stainless steel mesh safety glove provides the ultimate cut and puncture protection. Meets OSHA requirements for meat and poultry processing applications Each stainless steel ring is individually welded for unsurpassed strength. Taper-fit design conforms to the hand, decreasing fatigue while increasing productivity. Nylon cinch strap helps keep glove secure. Patented snap-fastener reversible style changes easily to fit either left or right hand. Custom glove sizes and configurations are available on special request. Sold individually.

Niroflex 2000

The most hygienic metal mesh glove available! Niroflex2000 gloves are 100% stainless steel and have no fabric straps to wear out or deteriorate during cleaning and sanitizing, and are the only gloves on the USDA Meat and Poultry Equipment Review Program's Accepted Product List. Niroflex2000 gloves meet ANSI/NSF/3-A 14159-2-2003, Hygiene Requirements for the Design of Hand Held Tools Used in Meat and Poultry Processing. Niroflex2000's patented wrist fastener is easily adjustable to provide a comfortable, secure fit. The reversible design fits either right or left hand. All gloves include a bar-coded serial number tag for tracking gloves when issued to employees or for charting cleaning schedule. Custom glove sizes and configurations are available on special request. Sold individually.



Saf-T-Gard	Niroflex	Size	Color	Traditional Glove size	Hand Circum.
81501	81701	X-Small	Green	6 – 6.5	152mm
81502	81702	Small	White	7 – 7.5	178mm
81503	81703	Medium	Red	8 – 8.5	203mm
81504	81704	Large	Blue	9 – 9.5	229mm
81505	81705	X-Large	Orange	10 – 10.5	254mm

Repair Service:

Repaired gloves are returned within 2 working days after receipt of a repair order. FOB Northbrook, Illinois (no freight allowance). Repairable gloves are to be sent by prepaid freight to: STG Mesh Repair Dept. RHF, 205 Huehl Road, Northbrook, IL 60062



Extended Cuff Styles Available By Special Order:

Please contact your local Victorinox Swiss Army representative or call 1-800-243-4074 for further information. Gloves comply with USDA and OSHA requirements.

P.O.P DISPLAYS



10000 RHF Cimeter Knife Display

Display board supplied with magnetic bar allows you to design display to fit your needs. Knives not included. Available with lockable sliding doors for ease of access.



10001 Display Cabinet
Hangs or stands
29¼"W x 22¼"H x 18½"D



10007 Lockable Stocking Display Case Base
29¼"W x 22¼"H x 18½"D

PRE-PACKED DISPLAYS



49042 3-Piece Paring Knife Display
Contains 24 units of 48042

PRE-PACKED DISPLAYS



49018 Handheld Sharpener Display
Contains 18 of 49002
8½"H x 13½"W x 8½"D



88351.12 Side Chef Display – Red
Contains 12 units of 88351
10"H x 7"W x 11.5"D
(18"H with Header Card)



7.6075.18 Peeler Display
Contains 18 units of 7.6075
7"W x 10"H x 11½"D
(18"H with header card)



86500 PerformanceSHIELD Glove Rack with Three Peg Wire Rack
13¾"W x 18¾"H x 5"D
(display dimensions with header card)

Pre-packed display contains:
■ (4) 86501 X-Small
■ (8) 86502 Small
■ (12) 86503 Medium
■ (8) 86504 Large
■ (4) 86505 X-Large



86300 PerformanceFIT Glove Rack with Four Peg Wire Rack
Contains 8 of each color
17"W x 18¾"H x 5"D
(display dimensions with header card)



46900 Blade Guard Display
Contains 20 units of each size
21"W x 25"H x 21"D
(display dimensions with header card)

PRE-PACKED DISPLAYS

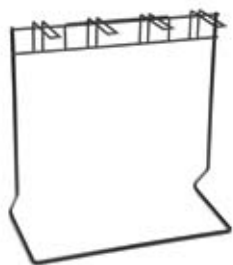


48300 BLADESafe Display
with 12 of each
BladeSafe size
12"W x 8"H x 10"D

- 4½" BladeSafe
- 6" BladeSafe
- 8" BladeSafe
- 10" BladeSafe

10011 Empty Display

EMPTY DISPLAYS



C103 Four Prong Empty Rack
17"W x 17"H x 5"D
(holds 32 clamshells)



12705 Three Prong Empty Glove Display
13¾"W x 18¾"H x 5"D
(holds approx. 24 gloves)

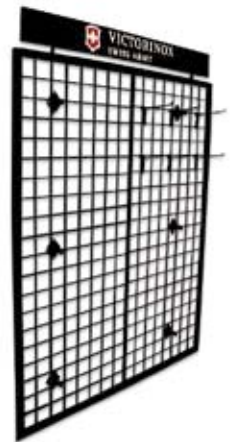
EMPTY DISPLAYS



40900 Empty Blade Guard Display
Holds approx. 240 packages –
20 of each size (12 sizes total)
21"W x 25"H x 21"D

MERCHANDISE FIXTURES

Designed for maximum brand exposure of our line of carded/peggable items. See price list for complete item offering (dimensions below).



10015 Wire Grid Wall Display
48"W x 60"H x 4"D
(ships with 30 hooks)

10016 Replacement Scan Hooks
For Spinner 10013 and
Wall Grid 10015
2-Prong
Product not included



10013 2-Sided Display on Casters
20"W x 60"H x 18"D
(Ships with 30 hooks)

10014 Replacement Hooks
For Spinner 10013
1-Prong
Product not included

COUNTER CARDS



VCS08006
Forged Features & Benefits
Counter Card
7"W x 9"H



VCCS11019
Stamped Features & Benefits
Counter Card
7"W x 9"H

DISPLAY HEADERS



15091 Cut Resistant Glove Header Card
13"W x 6"H



X86300HC Colored Gloves Header Card
17"W x 6"H

SIGNS & BANNERS



VCCF12032 Victorinox Sintra Sign
With silk screened logos and
holes drilled for suspension

Three sizes to choose from:

VCCF12032A
14"W x 7.68"H, 6mm thickness

VCCF12032B
18"W x 9.85"H, 6mm thickness

VCCF12032C
20"W x 10.94"H, 6mm thickness



VMS10041
Victorinox Flag w/ Grommets
30"W x 30"H



VRCS11009 Horizontal Banner
29½"W x 22¼"H x 18½"D

ITEM NUMBER CROSS REFERENCE

The following two pages indicate the North American Item numbers verses the International item numbers. N/A indicates that the item is only available in North America. **All orders placed in North American should utilize the North American item number (left column).**

North American Item Number	International ItemNumber	North American Item Number	International ItemNumber	North American Item Number	International ItemNumber
40990	0.7830.11	40003	5.2030.12	40542	5.4203.25
40560	3.9051	40027	5.2030.19	40543	5.4203.30
40490	5.0109	40023	5.2030.25	40544	5.4203.36
40694	5.0203	40556	5.2033.12	40142	5.4220.25
42603	5.0307	40720	5.2033.19	40139	5.4220.30
40604	5.0401	40721	5.2033.25	40144	5.4230.25
40806	5.0403	40020	5.2060.20	40146	5.4230.30
40605	5.0431	40421	5.2061.20	40148	5.4230.36
42807	5.0437	40451	5.2062.20	40640	5.4233.25
40001	5.0600	40520	5.2063.20	40641	5.4233.30
40601	5.0601	5206720	5.2067.20	40642	5.4233.36
40600	5.0603	40471	5.2068.20	40041	5.4430.25
40807	5.0607	40737	5.2103.15	40546	5.4433.25
40603	5.0631	40199	5.2300.15	40044	5.4500.25
40602	5.0633	40290	5.2300.18	40540	5.4503.25
42602	5.0637	40198	5.2400.15	40541	5.4503.30
40502	5.0701	40549	5.2533.21	40643	5.4623.30
42605	5.0702	40394	5.2600.25	40645	5.4723.30
40501	5.0703	40395	5.2600.31	40646	5.4723.36
40809	5.0707	40598	5.2603.10	43960	5.4903.0
42604	5.0737	40599	5.2603.15	46552	5.4913
40504	5.0831	40690	5.2603.20	46051	5.4914
40553	5.0832	40397	5.2700.25	46553	5.4923
40503	5.0833	40398	5.2700.31	46052	5.4924
42502	5.0837	40691	5.2763.16	40811	5.5103.10
40506	5.0933	40714	5.2803.15	40652	5.5203.20R
49890	5.1113.3	40616	5.2803.18	40557	5.5203.23
46652	5.1113.6	40551	5.2903.26R	40558	5.5203.31
40505	5.1233	40040	5.2930.26	40034	5.5500.20
46789	5.1233.M	40453	5.2932.26	41511	5.5503.18
40004	5.1430	40547	5.2933.26	40534	5.5503.20
40048	5.1630.18	40483	5.2934.26	41810	5.5903.08
40049	5.1630.21	5293726	5.2937.26	41820	5.5903.08M
40548	5.1633.18	40100	5.3000	41811	5.5903.09
40117	5.1800.18	40508	5.3003	41821	5.5903.09M
41540	5.1833.20	40000	5.30303	41812	5.5903.11
40024	5.1900.18	40509	5.3033	41822	5.5903.11M
40025	5.1930.18	40606	5.3103	40612	5.6003.15
40002	5.2000.12	40007	5.3109	40010	5.6006.15
40029	5.2000.15	40492	5.3400	5600715	5.6007.15
40026	5.2000.19	40493	5.3500	40812	5.6023.15
40021	5.2000.25	41690	5.3603.16	40614	5.6103.12
40022	5.2000.31	40710	5.3703.18	40615	5.6103.15
40424	5.2001.25	40711	5.3703.20	41510	5.6103.18
40454	5.2002.25	40613	5.3763.20	40112	5.6106.12
40552	5.2003.12	40311	5.3810.18	40113	5.6106.15
40570	5.2003.15	40715	5.3813.18	40114	5.6106.18
40523	5.2003.19	40028	5.3900.33	40713	5.6203.09
40524	5.2003.22	40093	5.4000.18	40518	5.6203.12
40521	5.2003.25	40590	5.4003.18	40519	5.6203.15
44521	5.2003.25	40141	5.4120.30	40510	5.6403.12
40522	5.2003.31	40143	5.4200.25	40511	5.6403.15
5200725	5.2007.25	40145	5.4200.30	40012	5.6406.12
40474	5.2008.25	40147	5.4200.36	40013	5.6406.15

North American Item Number	International ItemNumber	North American Item Number	International ItemNumber	North American Item Number	International ItemNumber
40512	5.6413.12	40195	6.1203.36	40297	N/A
40513	5.6413.15	40191	6.1320.21	40298	N/A
40014	5.6416.12	41527	6.8520.17	40390	N/A
40015	5.6416.15	41529	6.8523.17	40391	N/A
40118	5.6500.15	43793	7.6073.3	40403	N/A
40610	5.6503.15	40491	7.6160	40404	N/A
40212	5.6520.15	40897	7.6163	40405	N/A
42610	5.6523.15	48884	7.6343.11	40407	N/A
40420	5.6601.15	45903	7.6345	40408	N/A
40450	5.6602.15	43800	7.6857	40415	N/A
40514	5.6603.12	43798	7.6857.3	40417	N/A
40515	5.6603.15	40555	7.6875.3	40418	N/A
40016	5.6606.12	7.7203.08	7.7203.08R	40419	N/A
40017	5.6606.15	7.7203.10	7.7203.10R	40427	N/A
5660715	5.6607.15	7.7203.12	7.7203.12R	40428	N/A
40470	5.6608.15	7.7203.12W	7.7203.12WR	40429	N/A
40516	5.6613.12	7.7203.15	7.7203.15R	40430	N/A
40517	5.6613.15	7.7203.20	7.7203.20R	40431	N/A
40018	5.6616.12	7.7213.20	7.7213.20R	40432	N/A
40019	5.6616.15	7.7223.26	7.7223.26R	40433	N/A
43517	5.6618.15	7.7303.08	7.7303.08R	40434	N/A
40039	5.7200.20	7.7303.15	7.7303.15R	40435	N/A
40130	5.7200.25	7.7323.17	7.7323.17R	40437	N/A
40537	5.7203.20	7.7403.15	7.7403.15R	40438	N/A
40538	5.7203.25	7.7403.20	7.7403.20R	40439	N/A
40131	5.7300.25	7.7403.25	7.7403.25R	40442	N/A
40133	5.7300.31	7.7433.21	7.7433.21R	40443	N/A
40134	5.7300.36	7.7433.23	7.7433.23R	40445	N/A
40425	5.7301.25	49002	7.8715	40446	N/A
40539	5.7303.25	10000	9.7004	40448	N/A
40630	5.7303.31	10001	N/A	40459	N/A
41534	5.7303.36	10004	N/A	40460	N/A
5730725	5.7307.25	10007	N/A	40461	N/A
40475	5.7308.25	10011	N/A	40494	N/A
40030	5.7320.25	10013	N/A	40550	N/A
40232	5.7320.31	10014	N/A	40580	N/A
40634	5.7323.25	10015	N/A	40581	N/A
40632	5.7323.31	10016	N/A	40582	N/A
40135	5.7400.20	12705	N/A	40583	N/A
40138	5.7400.36	15091	N/A	40584	N/A
40635	5.7403.18	30215	N/A	40585	N/A
42531	5.7403.20	30216	N/A	40586	N/A
40530	5.7403.25	40083	N/A	40587	N/A
40531	5.7403.31	40084	N/A	40589	N/A
40472	5.7408.25	40085	N/A	40595	N/A
40533	5.7423.20	40089	N/A	40596	N/A
40638	5.7423.25	40090	N/A	40633	N/A
40636	5.7423.31	40091	N/A	40680	N/A
40730	5.7603.15	40101	N/A	40683	N/A
40639	5.7703.15	40102	N/A	40687	N/A
40038	5.7800.15	40149	N/A	40688	N/A
40535	5.7803.12	40180	N/A	40689	N/A
40536	5.7803.15	40181	N/A	40693	N/A
40230	5.7900.12	40190	N/A	40782	N/A
40532	5.7903.12	40240	N/A	40783	N/A
40192	6.1200.30	40251	N/A	40793	N/A
40193	6.1200.36	40286	N/A	40993	N/A
40194	6.1203.30	40296	N/A	40994	N/A

North American Item Number	International ItemNumber
40997	N/A
40998	N/A
40999	N/A
41010	N/A
41015	N/A
41016	N/A
41017	N/A
41092	N/A
41290	N/A
41490	N/A
41589	N/A
41591	N/A
41594	N/A
41612	N/A
41694	N/A
41695	N/A
41799	N/A
41891	N/A
41893	N/A
41895	N/A
41896	N/A
41981	N/A
41996	N/A
41997	N/A
41998	N/A
41999	N/A
42799	N/A
42990	N/A
42991	N/A
42999	N/A
43991	N/A
43992	N/A
43993	N/A
43994	N/A
44691	N/A
44692	N/A
44693	N/A
44694	N/A
44695	N/A
44696	N/A
44902	N/A
44904	N/A
44953	N/A
44955	N/A
44956	N/A
44959	N/A
45896	N/A
45898	N/A
45899	N/A
45960	N/A
45961	N/A
45963	N/A
45964	N/A
46003	N/A
46035	N/A
46047	N/A
46050	N/A
46054	N/A

North American Item Number	International ItemNumber
46057	N/A
46058	N/A
46059	N/A
46149	N/A
46153	N/A
46550	N/A
46551	N/A
46654	N/A
46661	N/A
46662	N/A
46799	N/A
46892	N/A
47055	N/A
47057	N/A
47300	N/A
47301	N/A
47302	N/A
47303	N/A
47558	N/A
47650	N/A
47892	N/A
48042	N/A
48300	N/A
48310	N/A
48311	N/A
48312	N/A
48313	N/A
48344	N/A
48792	N/A
48891	N/A
48900	N/A
48997	N/A
49000	N/A
49003	N/A
49042	N/A
49765	N/A
49900	N/A
49901	N/A
49902	N/A
49903	N/A
49904	N/A
49905	N/A
49906	N/A
49907	N/A
49908	N/A
49909	N/A
49910	N/A
49911	N/A
46900	N/A
81501	N/A
81502	N/A
81503	N/A
81504	N/A
81505	N/A
81701	N/A
81702	N/A
81703	N/A
81704	N/A

North American Item Number	International ItemNumber
81705	N/A
83001	N/A
83002	N/A
83003	N/A
83004	N/A
83005	N/A
83101	N/A
83102	N/A
83103	N/A
83104	N/A
83105	N/A
83402	N/A
83403	N/A
83404	N/A
83501	N/A
83502	N/A
83503	N/A
83504	N/A
83505	N/A
86300	N/A
86500	N/A
87638	N/A
87688	N/A
87770	N/A
87771	N/A
87777	N/A
87779	N/A
87781	N/A
286.9006.08	N/A
286.9007.09	N/A
41499L	N/A
41501G	N/A
7.6075.18	N/A
7.7143.3	N/A
7.7143.8	N/A
7.7203.4W	N/A
7.7233.2	N/A
7.7243.10	N/A
7.7243.17	N/A
7.7243.18	N/A
7.7243.2	N/A
7.7243.3	N/A
7.7243.4	N/A
7.7243.6	N/A
7.7243.8	N/A
7.7244.10	N/A
7.7253.2	N/A
86300.G	N/A
86300.O	N/A
86300.P	N/A
86300.Y	N/A
C103	N/A
FRS08014	N/A
VCS08006	N/A
VRCS11009	N/A
XVICCHCSV	N/A
49018	N/A
84886	N/A

North American Item Number	International ItemNumber
84886.12	N/A
88351	N/A
88351.12	N/A
KT63681T	N/A
KT63682	N/A
KT63685T	N/A
KT63687	N/A
KT63688	N/A
KT63725	N/A
KT63731	N/A
KT63732	N/A
KT63330	N/A
KT63683T	N/A
103.074	N/A
103.075	N/A
106.036	N/A
5.5906.08S9	SAME
5.5906.09S9	SAME
5.5906.11S9	SAME
5.6603.15X	SAME
5.6613.12X	SAME
5.6613.15X	SAME
5.6663.15X	SAME
5.6603.15.RS	SAME
7.6075	SAME
7.7183	SAME
7.7113.09	SAME
7.7113.10	SAME
7.7113.15	SAME
7.7113.20	SAME
7.7113.25	SAME
7.7123.20	SAME
7.7123.25	SAME
7.7133.18	SAME
7.7153.12	SAME
7.7153.15	SAME
7.7173.21	SAME

USA

VICTORINOX SWISS ARMY, INC.

7 VICTORIA DRIVE PO BOX 1212 MONROE, CT 06468-1212

RETAIL CUSTOMERS, SERVICE/ORDER DEPARTMENT

TEL 800.243.4032 FAX 800.243.4006

PRODUCTS, PRICING AND PACKAGING ARE SUBJECT TO CHANGE
AT THE DISCRETION OF VICTORINOX SWISS ARMY, INC.



VICTORINOX
SWISS ARMY

The Victorinox Cross & Shield, Victorinox® and Swiss Army® are separate trademarks owned and registered by Victorinox AG, Ibach, Switzerland and its related companies.

© Victorinox Swiss Army, Inc. 2013. All Rights Reserved.



VCCF12046