

NEWLAND HALL

WEDDING CEREMONIES & RECEPTIONS



NEWLAND HALL

WEDDING CEREMONIES & RECEPTIONS

The Newland Hall Country Estate is situated 4 miles west of Chelmsford, Essex. It consists of a large picturesque 15th century Tudor Manor House with a moat, beautiful gardens and over 100 acres of grass and woodland with four lakes surrounded by unspoiled countryside. Recently refurbished Newland Hall is a premier wedding venue catering for exclusive wedding ceremonies and receptions.







WHY NEWLAND HALL?

The Newland Hall Country Estate is situated 4 miles west of Chelmsford, Essex. It consists of a large picturesque 15th century Tudor Manor House with a moat, beautiful gardens and over 100 acres of grass and woodland with four lakes surrounded by unspoilt countryside. Long established and recently fully refurbished Newland Hall is the premier wedding venue in Essex, catering for exclusive wedding ceremonies and receptions.

We are not a hotel or golf club that provide weddings as a "bolt-on extra", we specialise in weddings, ensuring you get the best possible level of service, both in the organisation and the running of your special day.

THE HOUSE & SETTING

Newland Hall is a genuine Tudor Manor House, nearly 600 years old and Grade II Listed. It is steeped in history and the land is specifically listed in the Domesday Book of 1086. This makes it very stylish, interesting and full of character, ideal for weddings in Essex.

EXCLUSIVE USE

Unlike other wedding venues we guarantee you will have total exclusive use of the house, gardens and marquee for your wedding. Even our staff and suppliers will use a separate driveway, car park and entrance, ensuring 100% exclusivity.

CUSTOMISATION

With over 19 years experience as a premier wedding venue, we do not expect you to "fit in" to a standard wedding "package". Every wedding is customised to match the specific requirements of our clients. Through detailed discussions and tailoring every aspect, it will enable you to create exactly the right atmosphere for your Wedding Day.

STAFFING

All of our staff are of an extremely high standard and will be in uniform. We plan to make your coordinator your banquet manager on the day, thereby ensuring continuity and a seamless transition between the two roles.

PRICING

Due to the numerous options and various approaches to running a wedding, it is very difficult for us to provide specific pricing information at this stage. Prices may vary dramatically based on various options, including day of the week, time of the year, menus and the number of guests.



WEDDING CEREMONIES

TAKE YOUR MARRIAGE VOWS:

👰 In our beautiful Henry VIII Room, with its original hand carved Tudor beams and delightful views overlooking the beautiful gardens

👰 In our superb permanent marquee.

👰 In our delightful custom built gazebo – perfectly located in the gardens, with an optional canopy in case of inclement weather.

After the ceremony you may wish to enjoy reception drinks and canapés on the lawn whilst listening to a string quartet before receiving your guests for the Wedding Breakfast.

Due to exclusive use, all of the above options will be available to you. There is no requirement for you to commit to any particular location

for the ceremony when you book your wedding with us. You can alter your ceremony plans any time – right up to the last minute!

We will, of course, ensure that contingency arrangements are in place in case of unsuitable weather.

MAYBE YOU WOULD PREFER A CHURCH WEDDING?

Our picturesque Parish Church, St Michael & All Angels is located in Roxwell, only a few minutes away from Newland Hall. The church is always open for visitors, and you are always welcome to organise your own visit to see the church.

So many choices...total flexibility.







WEDDING RECEPTIONS

The beautiful setting at Newland Hall makes it a perfect venue for a wedding reception.

Enjoy your wedding breakfast in the beautiful Tudor Manor House, or our superb traditional marquee located in the moated gardens. As a permanent structure it is fully lined and has a solid carpeted floor, oak faced bar, large dance floor, sound system, washrooms and is heated.

Through extensive and detailed research we have achieved the ultimate wedding reception environment by having both the house, and the superb atmosphere of a traditional marquee with the comfort and high standards of an indoor venue.

Your chosen reception location will be laid-up to a very high standard, using quality furniture, linen and fine bone china crockery. A wide range of high quality menu options are available, along with an excellent selection of wines and fully licensed bar.

*We pride ourselves in
always exceeding our
guests expectations.*



... have used to hold from this
day forward for better for worse for
doe for ye over in sickness and in health
... and should all have
... to give to be
...

Menu



*High on the high table the leaves are out
and all our fingers blossoming with glass.
The tablecloth's a lawn, a linen bedsheet
where we lay our limbs to grass amidst the carnival,
the cavalcade, the mardi gras.*

Poem by Jane Draycott
from 'A Glass Case' co written with Elizabeth James



SAMPLE MENUS

WEDDING BREAKFAST MENU A

Please make one selection from each course

Terrine of Smoked Salmon
Pate Maison with Crackers
Japanese Breaded Prawns with Fresh Fruit



A Selection of Rolls with Butter Curls



Traditional Roast
Supreme of Chicken
Beef Bourguignon
Poached Chicken in Champagne & Tarragon



Selection of Vegetables



Profiteroles with a Hot Chocolate Sauce
Homemade Crumble of your choice served with Custard
Tarte au Citron with Fruit Coulis
Terrine of Summer Fruits with Cream



Fresh Ground Coffee, Tea & After Dinner Mints

WEDDING BREAKFAST MENU B

Please make one selection from each course

Red Onion & Mozzarella Tart
Smoked Chicken & Spinach Salad
Salmon & Coriander Fish Cakes
Terrine of Duck Pate



A Selection of Rolls with Butter Curls



Poached Salmon with White Wine Cream & Dill Sauce
Braised Marinated Lamb Shanks
Guinea Fowl with Button Onions, Lardons & Mushrooms



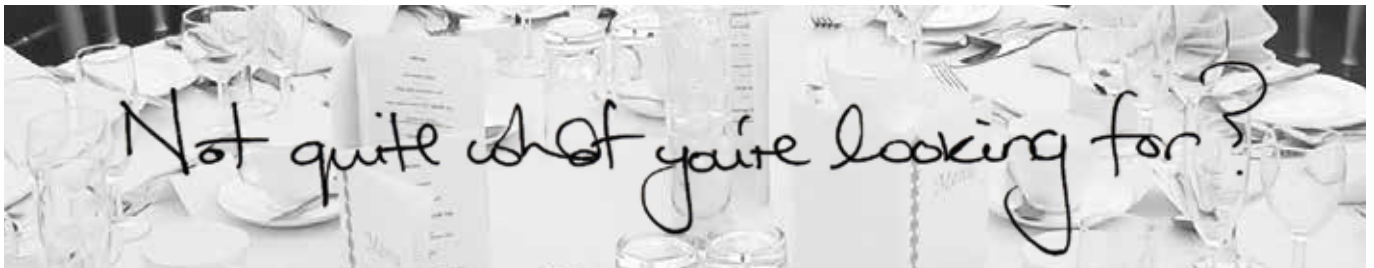
Selection of Vegetables



Passion Fruit Bavorois
Chocolate & Hazelnut Meringue Roulade with Fruit Coulis
Fruits of the Forest Tartlets with Cream
Cheesecake of your choice



Fresh Ground Coffee, Tea & After Dinner Mints



SAMPLE MENUS

WEDDING BREAKFAST MENU C

Please make one selection from each course

Oak Smoked Salmon
Smoked Mackerel Salad
Mignon of Salmon with Tomato, Orange & Basil
Parma Ham & Melon



A Selection of Rolls with Butter Curls



Breast of Duck with Orange Sauce
Chefs Traditional Roast Beef with Yourkshire Puddings
Noisettes of Lamb with a Redcurrant Sauce



Selection of Vegetables



Seasonal Berries with Shortbread Fingers & Cream
Raspberry Roulade with a Champagne Coulis
Chocolate Truffle Torté
Fudge Cake with Chocolate Sauce



Individual Continental Cheese Boards & Biscuits



Fresh Ground Coffee, Tea & After Dinner Mints

EVENING BUFFET

A small sample of the food available for your evening buffet

Smoked Salmon & Cream Cheese on Rye Bread
Marinated Satay Chicken with various Dips
A Selection of Sandwiches
Luxury Meat & Vegetable Puff Pastry Parcels
Oriental Vegetable Spring Rolls
Spinach & Feta Goujons
Savoury Quiches

*"Everything about Newland Hall
was spot on; the food, the location
and the marquee were excellent.
We couldn't have wished for a
better reception"*

Clare & John Farthing

...All Newland Hall weddings are customised to meet Bride & Groom's requirements and the menus listed are samples only. There are many other menu choices available. We are also happy to personalise your menu choice by 'mixing and matching' the courses described.





WINTER WEDDINGS

Newland Hall is an all year round venue...the perfect setting for a winter wedding.

"Thank you so much for providing us with the perfect wedding reception. The whole event was absolutely outstanding. The marquee looked fantastic and the food surpassed all expectations in terms of both quality and quantity..."

Andy & Louise Harper







THE HISTORY

The Manor of 'Newlanda' belonged to King Harold before the Norman conquest, and was the only land-holding in Roxwell specifically listed in the Domesday Book of 1086. It was so named because it was created out of untamed forest on 'newly won land'. The land was held by Eustace, Earl of Boulogne. At the beginning of the 13th century Newland was held by Ralph de la Neweland, and for the next two centuries it remained in the hands of his descendants.

The first reference to Newland Hall (rather than just Newland) was made in 1447. Original records exist for Manor Courts held at Newland Hall from 1448 onwards. There is strong evidence that Newland Hall was one of the places of retirement for the lascivious King Henry VIII.

"We had the best day of our lives thanks to you. We didn't have any worries on the day because we knew it was all sorted. The marquee looked fabulous and the setting was absolutely stunning, with the flowers and trees and lakes beyond..."

Sue & Tim Sampson



HOW TO FIND US

Newland Hall is situated 4 miles west of Chelmsford on the A1060, exactly 1 mile past the Indian restaurant.

Exit M25 at J28, take A12 towards Chelmsford. Exit A12 at Chelmsford (A414). Down slip-road, straight across roundabout.

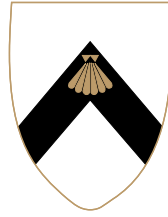
Continue for about 2 miles until you reach 2 roundabouts close together: straight across first, left at second (Bowling).

Continue through approximately 2 or 3 sets of lights until you reach the main junction with traffic lights.

Turn left on A1060, sign-posted Sawbridgeworth. Continue for approximately 4 miles passing the Horse & Groom and The Hare public houses.

Newland Hall is sign-posted one mile past the Indian restaurant on the left. Continue down the drive to the Hall.





WHAT DO OUR BRIDES & GROOMS SAY?

"It was the perfect day and everything went extremely smoothly, largely due to your excellent staff. They combined helpfulness with efficiency and discretion and really could not be faulted in any way."

Gail & Paul Reeve

"You were all so professional and caring which made all the difference, it was not 'just another wedding'..."

Julie & Richard Tomkinson

"I am still receiving thank you cards and phone calls from the guests saying how delightful the setting for the wedding was. I will have no hesitation in recommending your services in the future..."

Martin Cummings

"The service that we received was nothing short of exceptional. We found everybody to be very professional and extremely accommodating..."

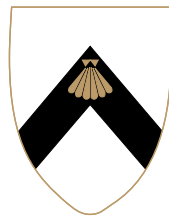
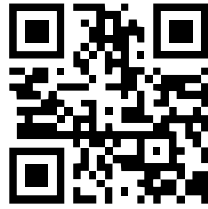
Sarah George

"We couldn't have wished for a more beautiful place, everyone has phoned and said it was the best reception they had ever been to..."

Ann & Charles Dovey

"Thank you and your staff for providing such a professionally organised wedding reception; we all has a fantastic time. We would certainly recommend Newland Hall to anyone..."

Jenny & Peter & Crook



NEWLAND HALL

Roxwell, Chelmsford, Essex CM1 4LH

Tel: 01245 231010

email: info@newlandhall.co.uk

www.newlandhall.co.uk