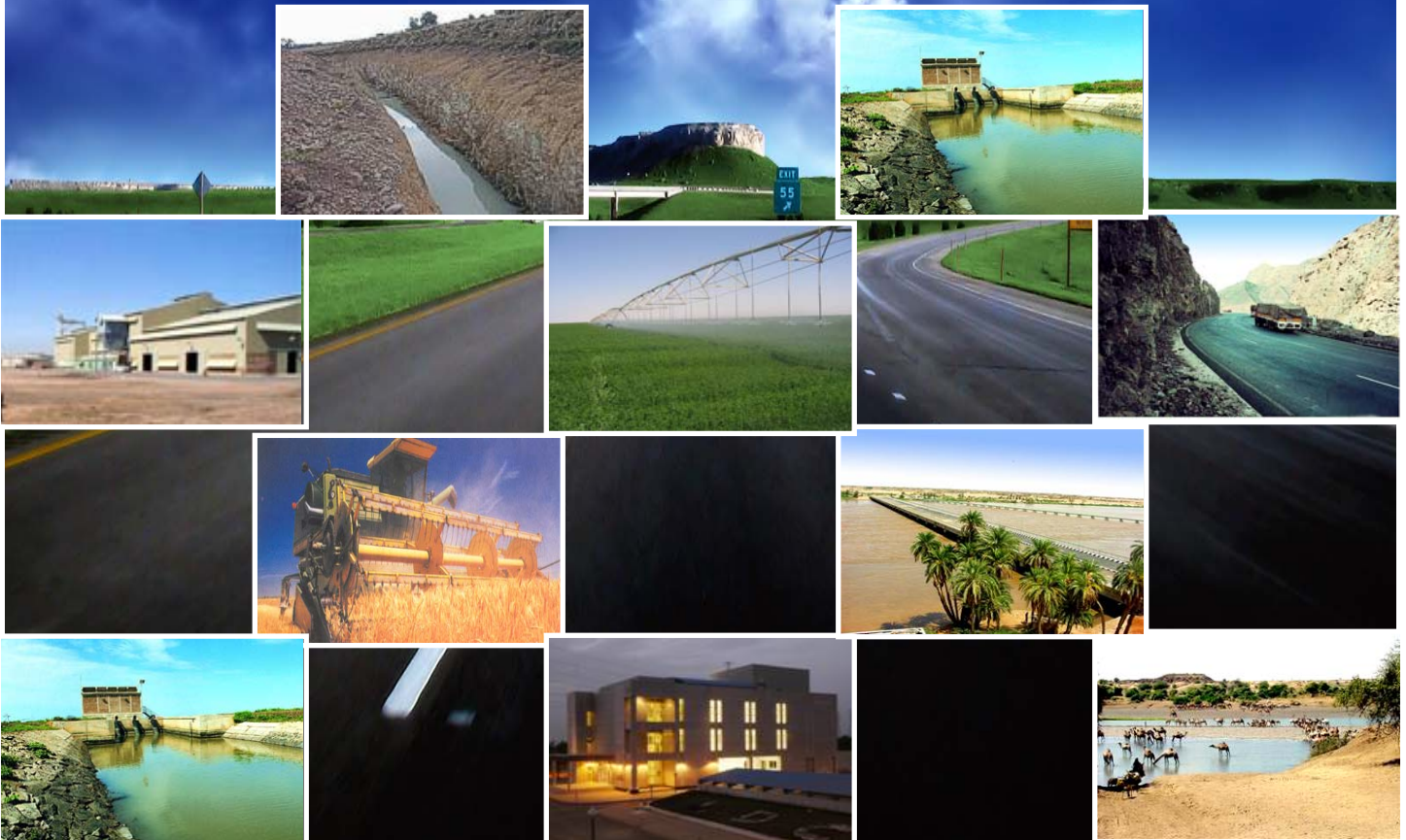


NEWTECH CONSULTING GROUP

TRULY MULTI-DISCIPLINARY



PROFILE

Newtech Consulting Group (Ltd.) was established in 1983 by a group of highly qualified professionals of diversified engineering, industrial and business experience.

The firm, operating as an independent consultant, has established a reputation of high professional competence in the fields of engineering, architecture, industry, agriculture, rural development and environment. With such a wide range of activities, **Newtech** is considered to be the pioneering multi-disciplinary consultancy firm.

MISSION

to provide a variety of high quality service by highly qualified, well-trained and fully loyal professionals working in an attractive environment that is up-to-date with the evolution of technology while expanding locally and globally to achieve sustainable growth of our owners' equity in full compliance with corporate governance and social responsibility.

REGISTRATION

Newtech is registered with the Organizing Council for Consultancy Firms (**OCCF**) and the Government of Southern Sudan (**GOSS**) in addition to most Arab, African, Islamic and International Funding Agencies, Governments and relevant institutions in different countries.

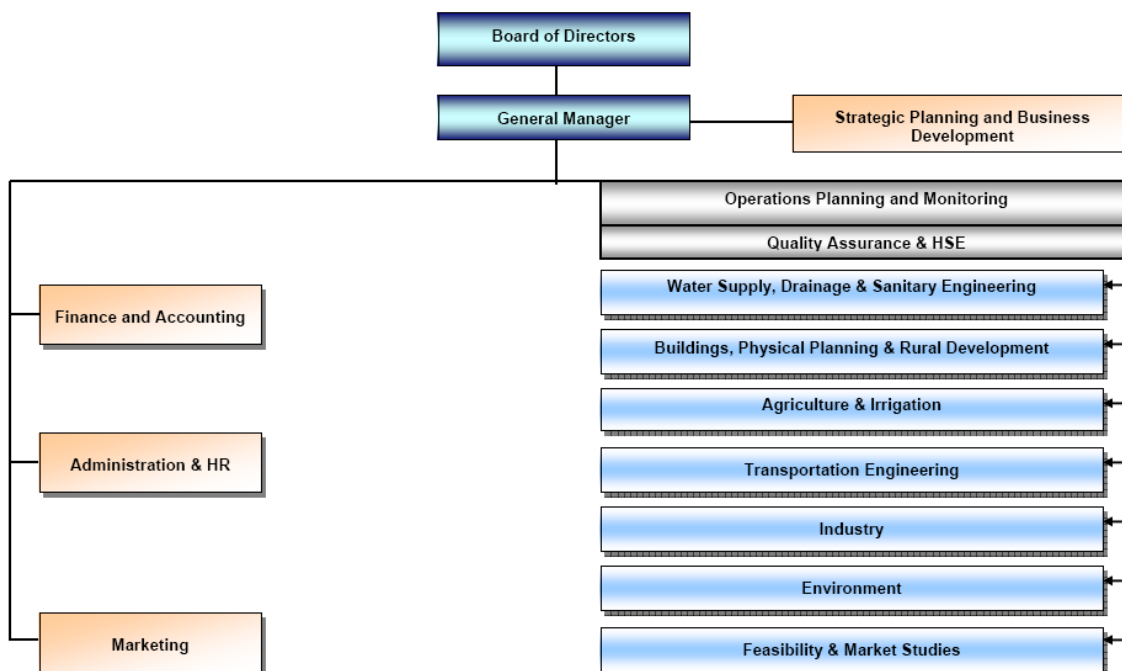
Newtech is also a member of:

- The Sudanese Engineering & Architecture Consultancy Association **SEACA** (Member of **FIDIC**)
- The Federation of African Consultants (**FECA**)
- The Arab Association of Engineering Consultants.
- Federation of Consultants from Islamic Countries (**FCIC**)
- Federation of Arab and African Consultants (**FAAC**)

Newtech is an **ISO 9001:2000** certified company



NEWTECH'S ORGANISATIONAL CHART



GLOBAL ORIENTATION

Newtech has completed and is currently undertaking consultancy assignments in a wide range of projects that best illustrate **Newtech's** special capabilities in integrated and multi-disciplinary consulting services. **Newtech** has been providing such consulting services for a diversified large number of clients, including governmental, private, regional and international organizations. **Newtech** is therefore very familiar with the requirements and procedures of the different local, regional & international funding agencies which financed the different projects undertaken by **Newtech**, including:

- *World Bank*
- *Arab Bank for Economic Development in Africa (BADEA)*
- *IFAD*
- *African Development Bank & Fund*
- *Abu Dhabi Fund*
- *Islamic Development Bank*
- *Kuwaiti Fund*
- *Arab Fund for Economic & Social Development (AFESD)*
- *European Economic Community (EEC)*
- *OPEC Fund*
- *United Nations Industrial Development Programme (UNIDO)*
- *United Nations High Commissioner for Refugees (UNHCR – Sudan)*
- *DANIDA (Denmark)*
- *Arab Authority for Agricultural Investment & Development (AAAID)*

Newtech has undertaken projects in the following countries:



Republic of Sudan



Republic of South Sudan



Republic of Egypt



Tanzania



Republic of Yemen



Republic of Mozambique



The Gambia



Republic of Kenya



Rwanda



Democratic Republic of Congo



Republic of Ghana



Cote D'Ivoire



ASSOCIATIONS AND COLLABORATIONS



Newtech has associated and worked in collaboration with several international and national consultancy firms and institutions including:

- ***Sheladia Associates (USA).***
- ***HTSPE (UK).***
- ***The Louis Berger Group (USA).***
- ***TAMS (USA).***
- ***De Leuw Cather (USA).***
- ***SNC Lavalin, (Canada).***
- ***AACM (Australia).***
- ***Agrar-Und-Hydrotechnik (Germany).***
- ***Dorsche Consult (Germany).***
- ***Norconsult International (Norway) & Norconsult (Kenya).***
- ***Sir Alexander Gibb & Partners (UK)***
- ***Brian Colquhoun & Partners (UK)***
- ***Landell Mills (UK).***
- ***Gibb Africa (Kenya).***
- ***Euroconsult (The Netherlands).***
- ***DHV (The Netherlands).***
- ***HVA International, (The Netherlands).***
- ***Carl Bro International A/S (Denmark).***
- ***Dar Alhandasah – Shair & Partners (Egypt).***
- ***Associated Consulting Engineers - ACE (Lebanon).***
- ***Consolidated Consultants - Engineering & Environment - CCEE (Jordan).***
- ***Tecnica Engenheiros Consultores (Mozambique)***
- ***Dr Ahmed Abdel Warith, Consulting Engineers (Egypt).***
- ***EM Consultants (Tanzania)***
- ***GAMECS (The Gambia)***
- ***Building & Roads Research Institute, University of Khartoum (Sudan).***
- ***Soil Survey Administration, Ministry of Agriculture (Sudan).***
- ***Agricultural Research Corporation (ARC), Ministry of Agriculture (Sudan).***
- ***Sudan National Survey Authority - Aerial Photography Division (Sudan).***
- ***Marine Research Institute, Red Sea University (Sudan)***



LINES OF ACTIVITIES

Newtech provides integrated consultancy services in the following fields:

1. Transport (*Roads & Bridges, Railways; Marine, River & Airports; Pipelines*)
2. Industry (*Agro-industry, Food Processing, Textile, Chemicals and Manufacturing*)
3. Agriculture & Irrigation.
4. Water Supply & Sanitary Engineering
5. Buildings & Physical Planning.
6. Rural Development.
7. Environment.

The scope of services provided in such fields includes:

Project Identification, Feasibility Studies, Design and Preparation of Performance Specifications, Preparation of Tender Documents, Assistance in Tendering, Supervision of Construction and Erection, Project Management, Rehabilitation Studies, Evaluation of Assets, Environmental Impact Assessment, Design & Implementation of Management Systems, Corporate Restructuring, Management Development and Provision of Technical Assistance.

TRANSPORT

Newtech was engaged in planning and engineering of all modes of transportation including air and marine ports, river transport, railway, pipeline, roads and bridges. However, there was naturally much more involvement in the road sector as the demand was much higher for highways as well as rural and feeder roads.

Newtech's work in this field covers different countries with diversified climatic, terrain and geological conditions.

The services provided by **Newtech** for this sector included transport policies & organization, traffic planning, pavement evaluation, detailed engineering design and construction supervision.



INDUSTRY

Newtech has provided integrated consultancy services to the different sectors of the industry: Food & Agro-industry (Poultry, Dairy, Fodder, Kenaf, Sugar, Flour Mills, Edible Oil & Soap, and Beverages), Textile (Spinning and Weaving), Building Materials (Cement, Bricks), Chemical & Plastics (Pharmaceutical, PP/PVC Products), Manufacturing (Sheet metal, Aluminum). The services provided covered all stages of industrial project preparation up to commissioning of processing plants, utilities and related civil works.

In particular, **Newtech** has acquired diversified experience in the preparation and management of turn-key contracts for industrial projects. Other consultancy assignments provided to this sector included Evaluation & Restructuring, Design and Implementation of Management Systems and Administrative Development Studies.



AGRICULTURE & IRRIGATION

Africa and the Middle East have vast agricultural potential and water resources with some of the world's largest permanently irrigated agricultural projects. **Newtech** has therefore, largely benefited from the local and international practices and standards that are highly developed and applied for the different types of irrigation schemes.

Newtech has studied, designed and supervised the construction of new projects and rehabilitation works of major agricultural and irrigation projects that extended for tens of thousands of hectares. The services provided covered different components of these projects, including agronomy, topographic survey, soil investigation and classification, water requirements, irrigation schemes (canals networks, control structures, pumping stations and related electromechanical works).



WATER SUPPLY & SANITARY ENGINEERING

Newtech has developed major water supply projects for rural and urban purposes. Water supply projects undertaken by **Newtech** included the utilization of both underground and surface sources. In addition, **Newtech** has studied and designed major water conveyance systems, conventional and non-conventional treatment systems and major sewerage networks and facilities.

Newtech has also developed different types of sanitation systems including domestic and industrial waste disposal. **Newtech** has successfully utilized appropriate technology in developing sanitation systems for rural and low cost applications.



BUILDINGS & PHYSICAL PLANNING

The scope of services provided by **Newtech** in this area covers the full range of architectural services including physical planning, structural and electromechanical works for buildings. **Newtech** won several architectural prizes and conducted various assignments for residential, industrial, commercial, educational, health and other civil works and auxiliary facilities. Being socially responsible, the firm gives high consideration for the development of low-cost building materials and construction techniques.



RURAL DEVELOPMENT

Newtech provides diversified services in the area of rural development, addressing the integrated nature of requirements in this field. Questions of development, in particular in a rural context, are intricately meshed with their respective social setting. This requires engineering projects to be sensitized towards issues of appropriate techniques, use of local resources, reliance on renewable energies, involvement of beneficiary communities, the role of women in development, sustainability and environmental soundness. **Newtech** has always been able to mobilize experts from different fields and coordinate their professional expertise in order to implement integrated development projects. These projects benefited from latest findings of research work and attempted application of improved techniques in areas of construction, agriculture, community mobilization, etc.



ENVIRONMENT

Environmental Impact Assessment of all major projects is seen by **Newtech** as a necessary requirement to secure the sustainability of development programmes. **Newtech** has carried out EIA for most of the major projects it has undertaken including infrastructure and rural development. The impact to both the physical and sociological environment of major projects, are undertaken and the necessary mitigation and monitoring measures are incorporated in the design. **Newtech** considers the role of Women in Development (WID) as an important component of EIA studies for major projects, as well as other aspects of environment related work undertaken by **Newtech** included Environmental Risk Assessment (ERA) e.g. investigation of contamination related to petroleum products. Newtech has successfully accomplished a vast number of Onshore and offshore Environmental Impact Assessments for a large number of major projects.



Newtech applies high standards of health, safety and environmental considerations in its work and work places. **Newtech** has developed its own HSE Manual for which **Newtech's** staff is trained to observe, ensuring proper HSE methods and measures are incorporated in all aspects of design work undertaken by Newtech.

ADDRESS

Newtech Consulting Group Ltd.

P.O. Box 94, Burri, Khartoum, Sudan – Postal Code 12214

Tel.: +249-183-521771 / 2 / 3 / 4 / 5

Fax: +249155180607 / +249153987824

E-mail: info@newtech-consulting.com

Website: www.newtechconsult.com

NEWTECH'S MANAGEMENT STRUCTURE

