



NiceLabel product line overview

Segments and Editions



Easily start producing professional labels.

DESIGNER EXPRESS
DESIGNER PRO



Manage quality and security of labeling to decrease risks and hidden costs.

LMS PRO
LMS ENTERPRISE
LABEL CLOUD

Desktop
Solutions

PowerForms

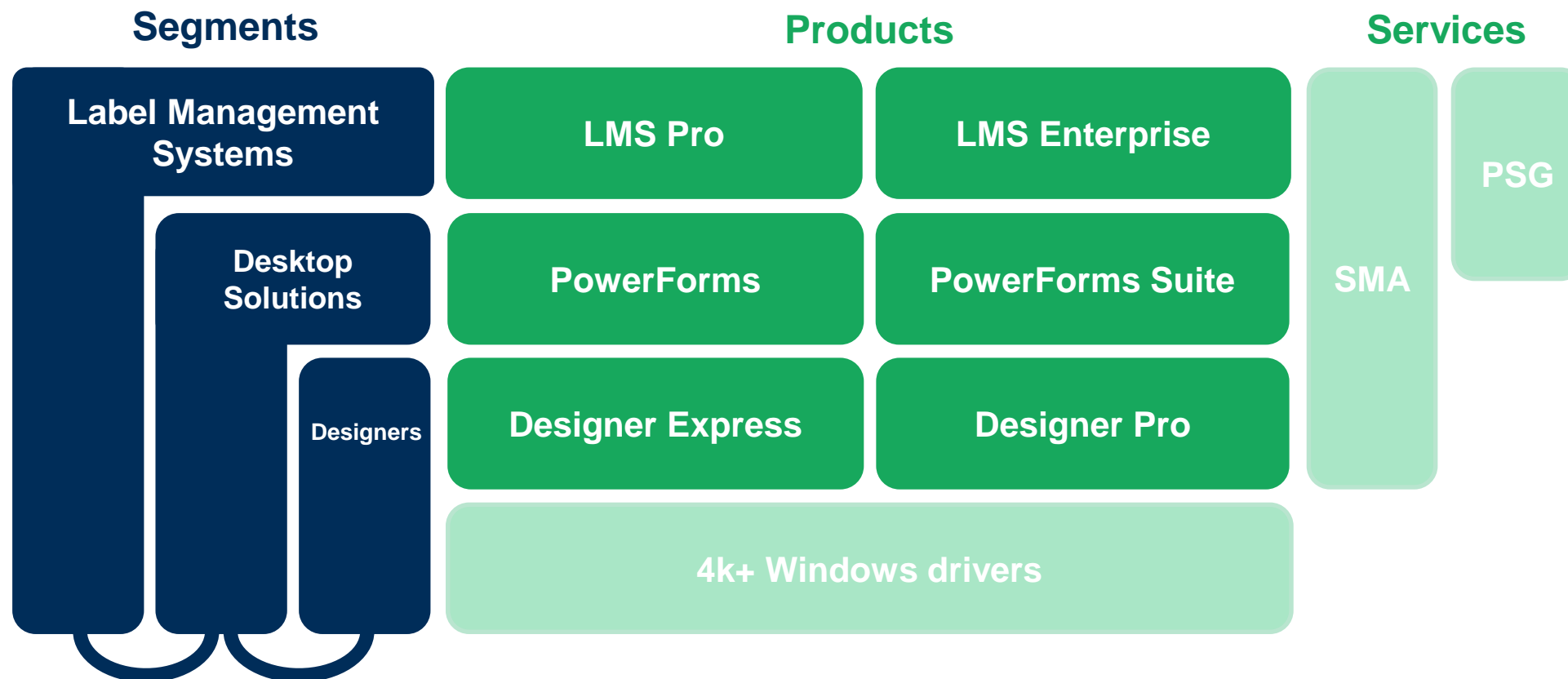
PowerForms Desktop
PowerForms Suite

Not sure what to choose?

Take a minute to answer seven questions about your labeling requirements and we'll recommend you a product that fits your environment and budget.

NL2019 Platform

Widest product range for business of all sizes



NL2019 Platform Products & Feature Progression

	Designer		Desktop solutions		Label management system		
Product Features	Designer Express	Designer Pro	PowerForms	PowerForms Suite	LMS Pro	LMS Enterprise	Label Cloud
Label Designer	✓	✓	✓	✓	✓	✓	✓
Desktop Print Only Utility	✓	✓	✓	✓	✓	✓	✓
Application Builder			✓	✓	✓	✓	✓
Integration System				✓	✓	✓	✓
Web Printing System					✓	✓	✓
Document Management System (DMS)					✓	✓	✓
Quality Management System (QMS)						✓	✓

Designer

NiceLabel 2019 Platform

Segments

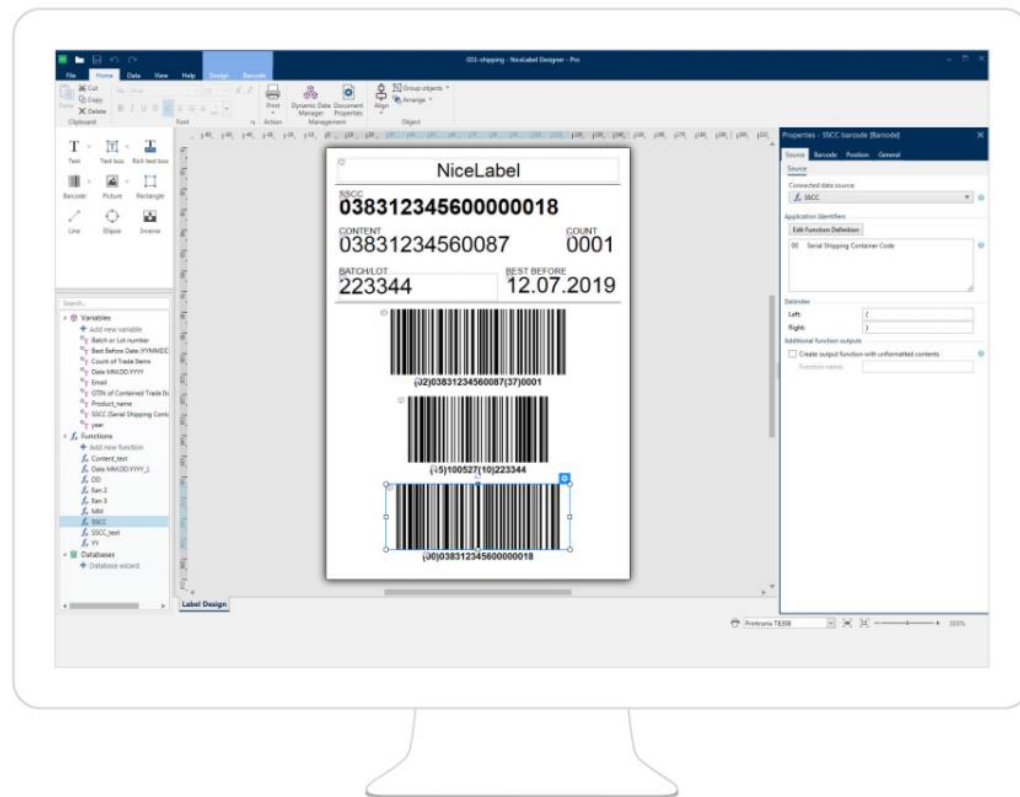
Products

Services

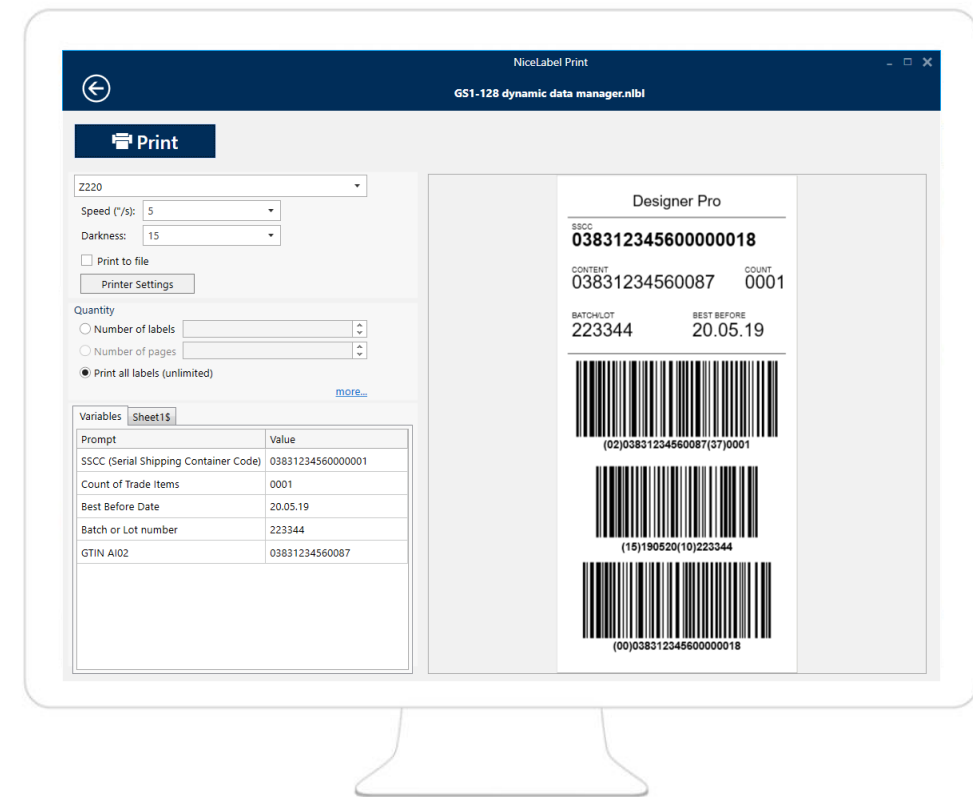


Quickly design and print barcode labels without It help

NiceLabel Designers help you quickly design labels and create an efficient printing process. Quickly produce professional labels without making investments in training and coding.



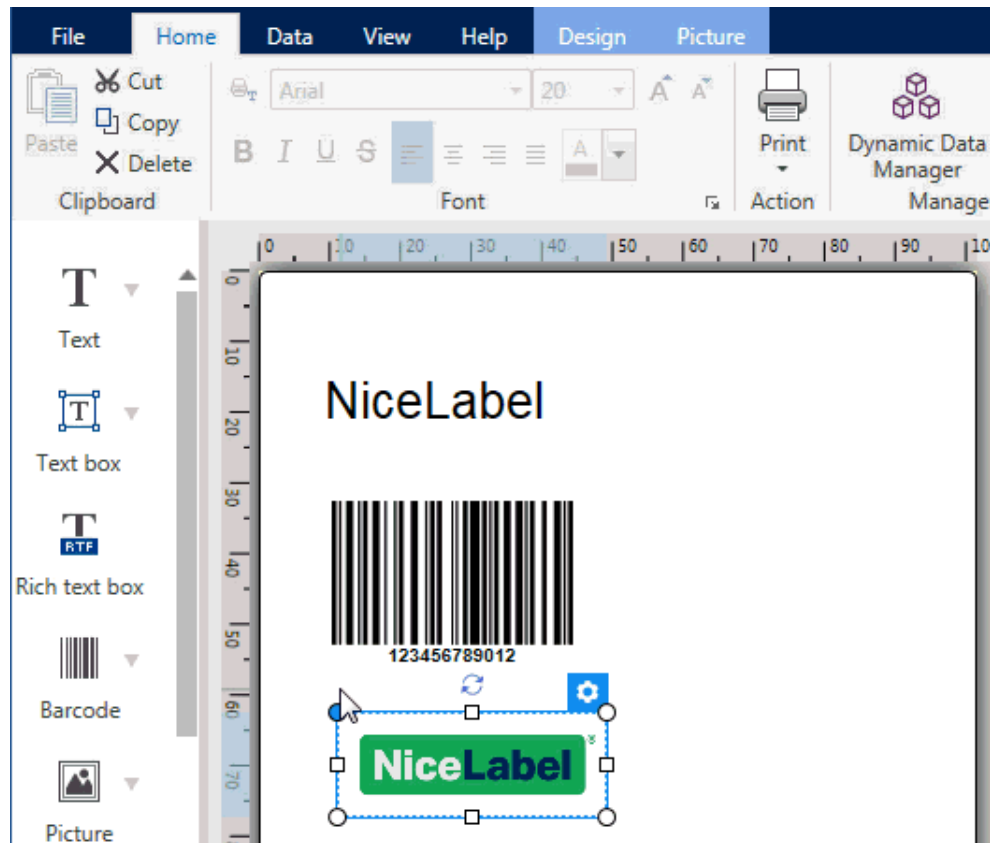
Design interface



Operator printing interface

Label design

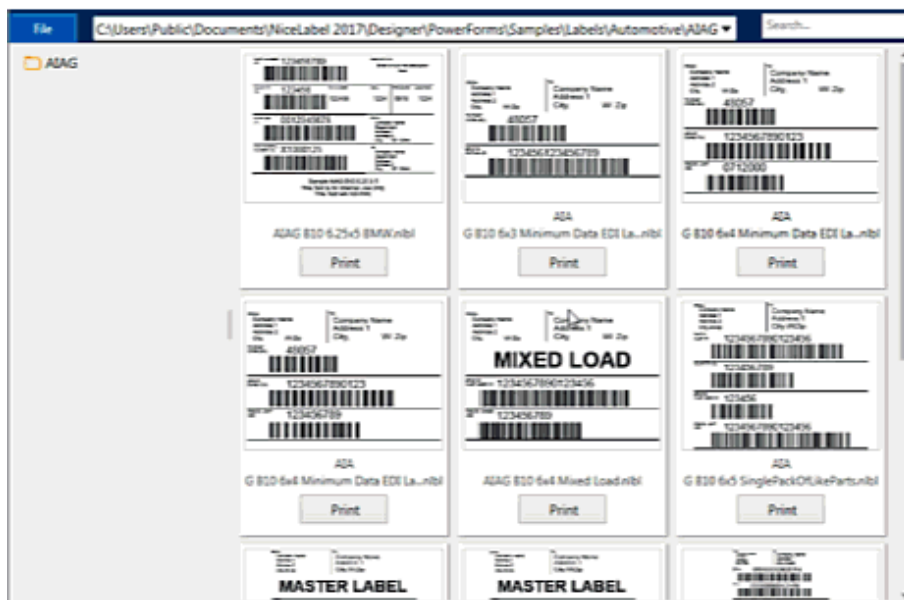
Everything you need to design labels quickly



- **Modern user interface, Familiarity with MS Office – Word**
 - **Quickly design without IT help**
- **Universal, portable label templates**
 - **Design once, print on any hardware**
- **Smart templates with dynamic data**
 - **Less templates to maintain, much improved consistency and agility**

Label Printing

Print accurate labels quickly



Everything you need to print in one form:

- Locked templates prevent errors
- Print preview enables the operator to check all information before printing
- Responsive form layout allows for greater flexibility

Positioning

Who is it for?

Small or medium sized businesses with few users, few label variations or low volume printing requirements

What need does it solve?

Design and print professional labels without IT help

	Designer Express	Designer Pro
Users (seats)	1 user	1 user, 3,5,10 printer seats
Databases or File	External data: <u>MS Excel & Text files.</u>	All capabilities including MS Access, SQL Server and Oracle
Dynamic Data (Variables)	Basic counter / Basic variables / No functions (no concatenation or subsets)	All counters & serialization / All variables / All functions
Dynamic Objects	None	Variable graphics, <u>relative positioning</u> , fit-to-box
Operator Printing Form	<u>All-in-one fixed form</u>	All-in-one <u>adaptable</u> form

Pricing

Product	Number of users / workstations	Number of printers	List price €	1 Year SMA €	3 Year SMA €
Designer Express	1	unlimited	295	59	149
Designer Pro*	1	unlimited	595	119	299
Designer Pro 3**	unlimited	3	895	179	449
Designer Pro 5	unlimited	5	1.395	279	699
Designer Pro 10*	unlimited	10	2.195	439	1.099
Designer Pro 5 Add-On	unlimited	5	1.095	219	549
Hardware Key	Express & Pro 1 user	unlimited	25		

* Call for more users

** The product we recommend in this segment

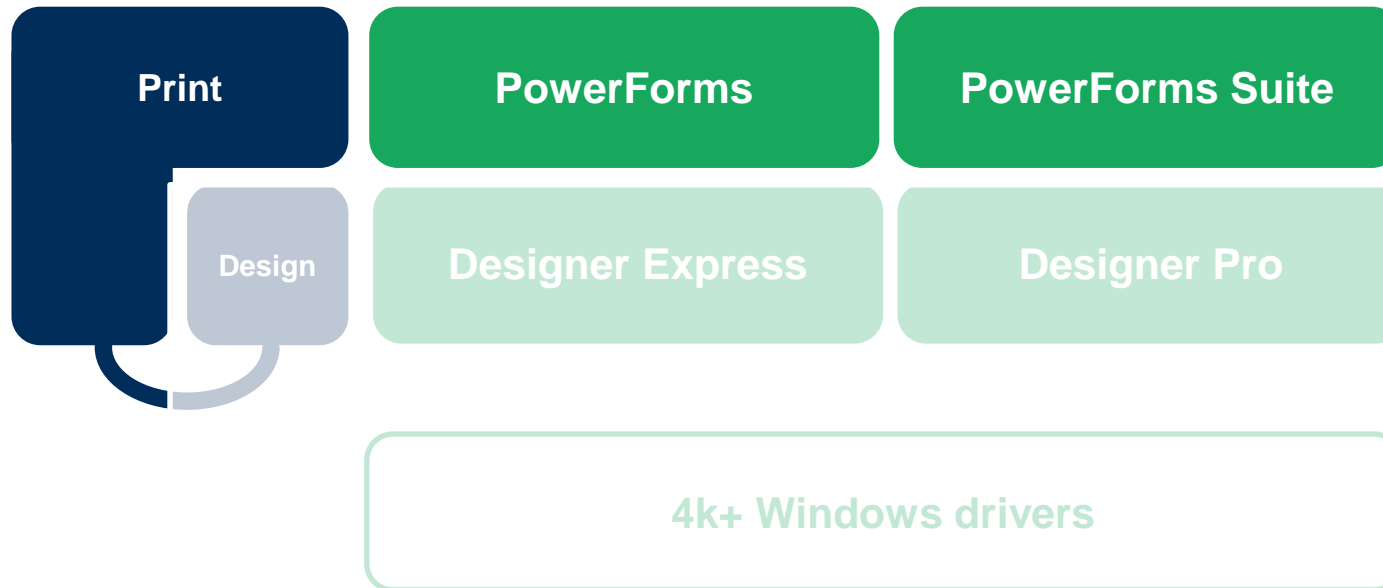
Desktop solutions

NiceLabel 2019 Platform

Segments

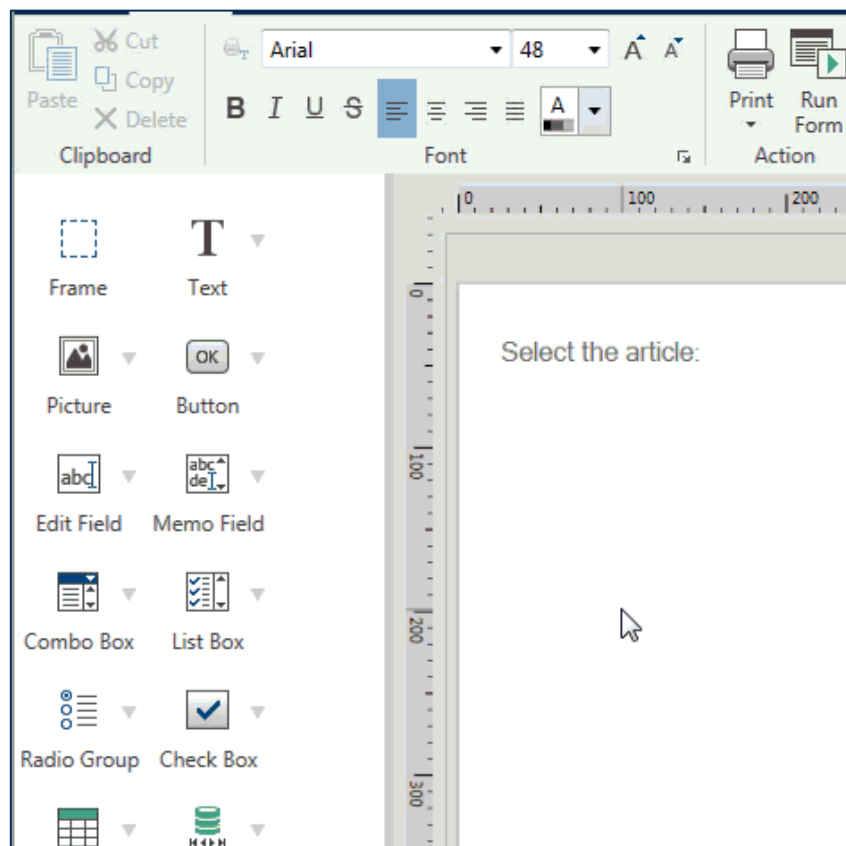
Products

Services



Drag&drop Application builder: Configure. Don't code.

Rapidly create custom printing forms & data management applications



- Manual printing
- Customization without coding
- Simplify the print process for print operators
- Streamline complex printing processes
- Build efficient data management applications

- No need for Visual Studio
- No need for SDKs or APIs

What is a Form application?

The screenshot displays the NiceLabel software interface, divided into two main sections: form design and form printing.

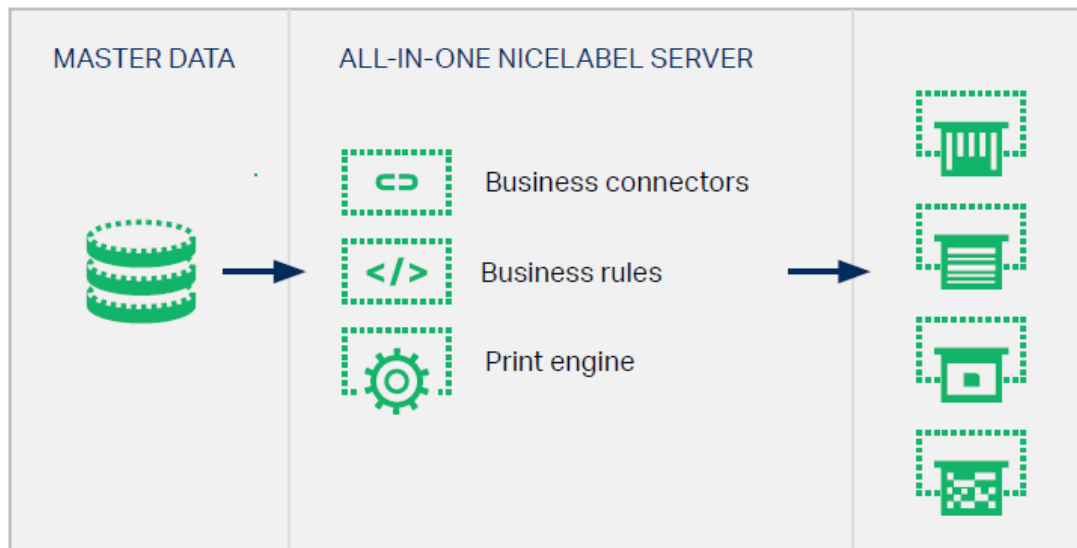
Form Design (Left): The interface shows a design canvas with a menu on the left containing options like Frame, Text, Picture, Button, Edit Field, Memo, Combo Box, List Box, Radio Group, Check Box, Database Table, Database Navigator, Database Search, Label Preview, Initialization, and Printer Settings. The Solution Explorer on the bottom left shows a tree view with 'Labels' and 'Forms' folders. Under 'Forms', 'Label Administration' and 'Printing' are visible. A green arrow points from the 'Label Administration' form in the design view to the 'Label Administration' form in the printing view.

Form Printing (Right): The window title is 'UDI Labeling for Medical Devices'. It features a green header with 'NiceLabel 2017' and two tabs: 'Label Administration' (selected) and 'Label Printing'. The form content includes:

- Scan or enter order number:** A text input field containing '1234'.
- Order Details:** Two greyed-out text boxes containing 'CompuHyper GlobalMed' and 'Duo Pen Needle'.
- Product Image:** An image of two pen needles with the text '50 pcs.' below it.
- Enter LOT:** A text input field containing '32432324'.
- Label Content:** A large white label with a green header 'CompuHyper GlobalMed' and 'Duo Pen Needle'. It includes:
 - GTIN: 00311234567918
 - LOT: 32432324
 - USE BY: 2017-09-29
 - Warnings: SINGLE PATIENT USE ONLY, DO NOT USE IF PACKAGE IS DAMAGED, 45°C UPPER LIMIT OF TEMPERATURE, KEEP DRY.
 - Manufacturer: CompuHyper GlobalMed, 123 Technology Dr, Somewhere, XX 00000. Contact: 800 555 1234 (USA), 555 555 123 (All others), www.chgm.com.
 - EC REP: MedDevFront UK, Somewhereshire, XX12 3XX UK. Website: www.mdf.co.uk.
 - Barcode: (01)00311234567918
 - Barcode: (17)170929(10)32432324
- Navigation:** A 'Label 1 of 50' indicator and a 'Print' button.

Easy Automation Builder

Integrated printing with your existing business systems reduces risks of labeling errors and improves print productivity



Automation empowers you to streamline complex printing processes, eliminate errors and improve print productivity. Integrate printing with existing business systems and hardware devices such as PLCs or weight scales.

- Integration without coding
- Works with all printers
- Data mapping
- Unmatched performance and reliability
- Business rules for maximum flexibility

How does Automation Easy work?



- Existing software creates a new record (saves data in the predefined form)
- Hardware event occurs (weight scale, PLC...)

- NiceLabel Automation captures trigger data and extracts it

- NiceLabel Automation executes the predefined workflow (prints labels, updates a database etc.)

Positioning

Who is it for?

Small or medium sized businesses where:
Operators print labels, accuracy is critical
and productivity is important

What need does it solve?

Streamline printing to control labor costs,
eliminate errors & improve productivity

	PowerForms	PowerForms Suite
Users (seats)	1 user	3,5,10 printer seats
Application builder	<u>PowerForms</u>	<u>PowerForms</u>
Integration	None	Automation Easy & .NET API

Pricing

Product	Number of users / workstations	Number of printers	List price €	1 Year SMA	3 Year SMA
PowerForms	1	unlimited	995	199	499
PowerForms Suite 3*	unlimited	3	1.295	259	649
PowerForms Suite 5	unlimited	5	1.995	399	999
PowerForms Suite 10**	unlimited	10	2.995	599	1.499
PowerForms Suite 5 Add-On	unlimited	5	1.495	299	749
Hardware Key	PowerForms 1 user	unlimited	25		

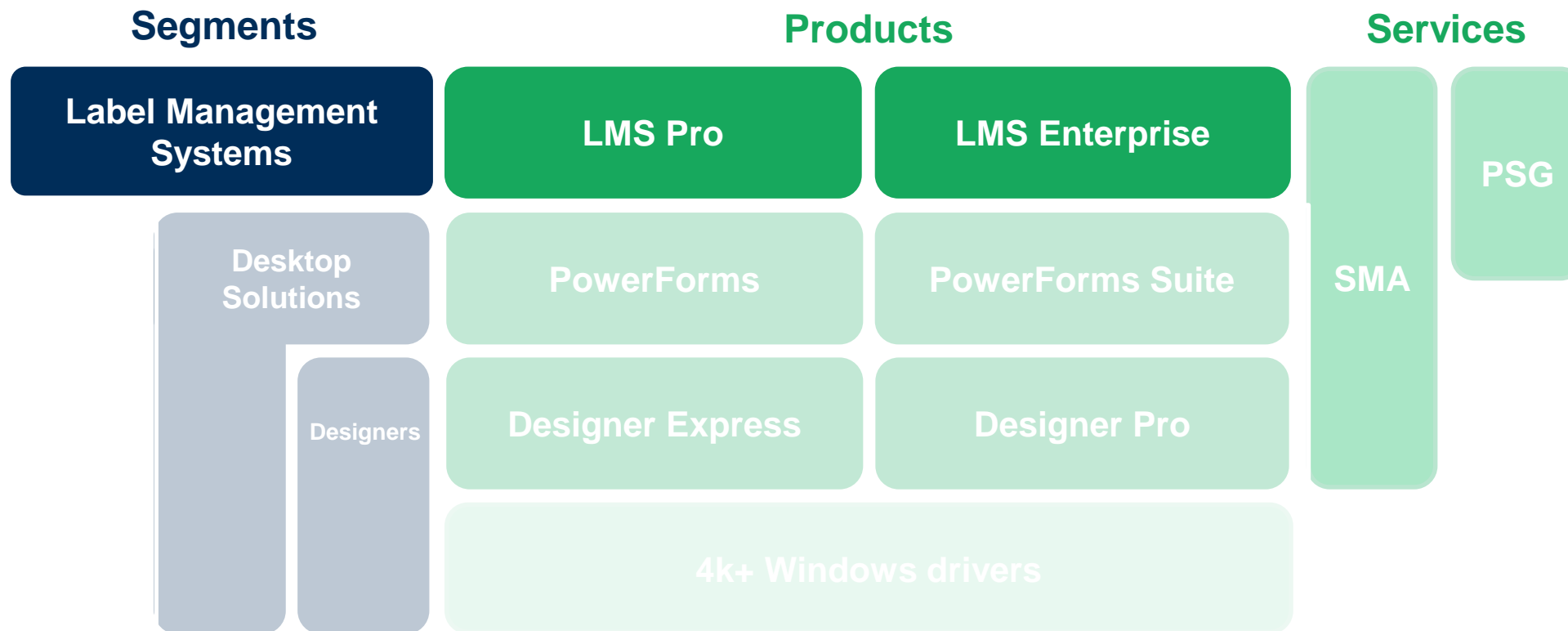
* The product we recommend in this segment

** Call for more users

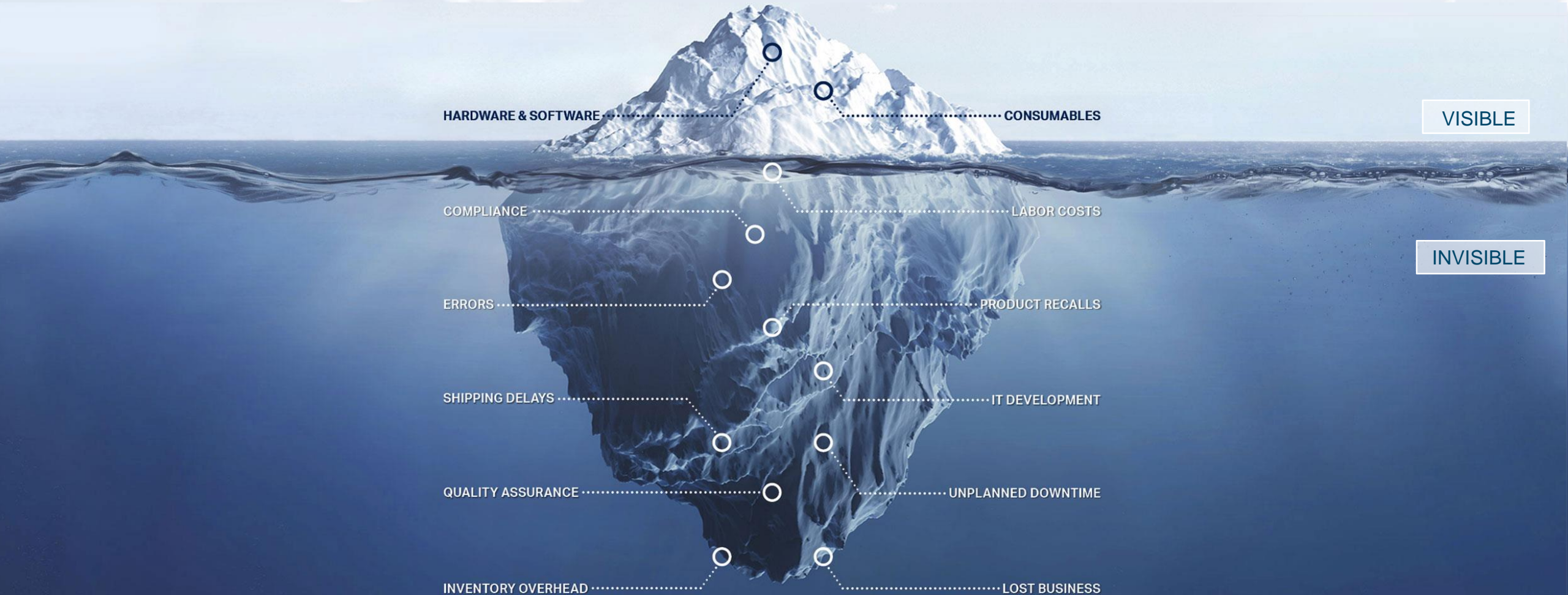
Label Management System

NL2019 Platform

Widest product range for business of all sizes



The hidden costs associated with legacy approaches



VISIBLE

INVISIBLE

It's time to digitally transform labeling

A



Design labels
faster

B



Improve QA
process

C



Boost
efficiency

A) Design labels faster

Reduce IT burden

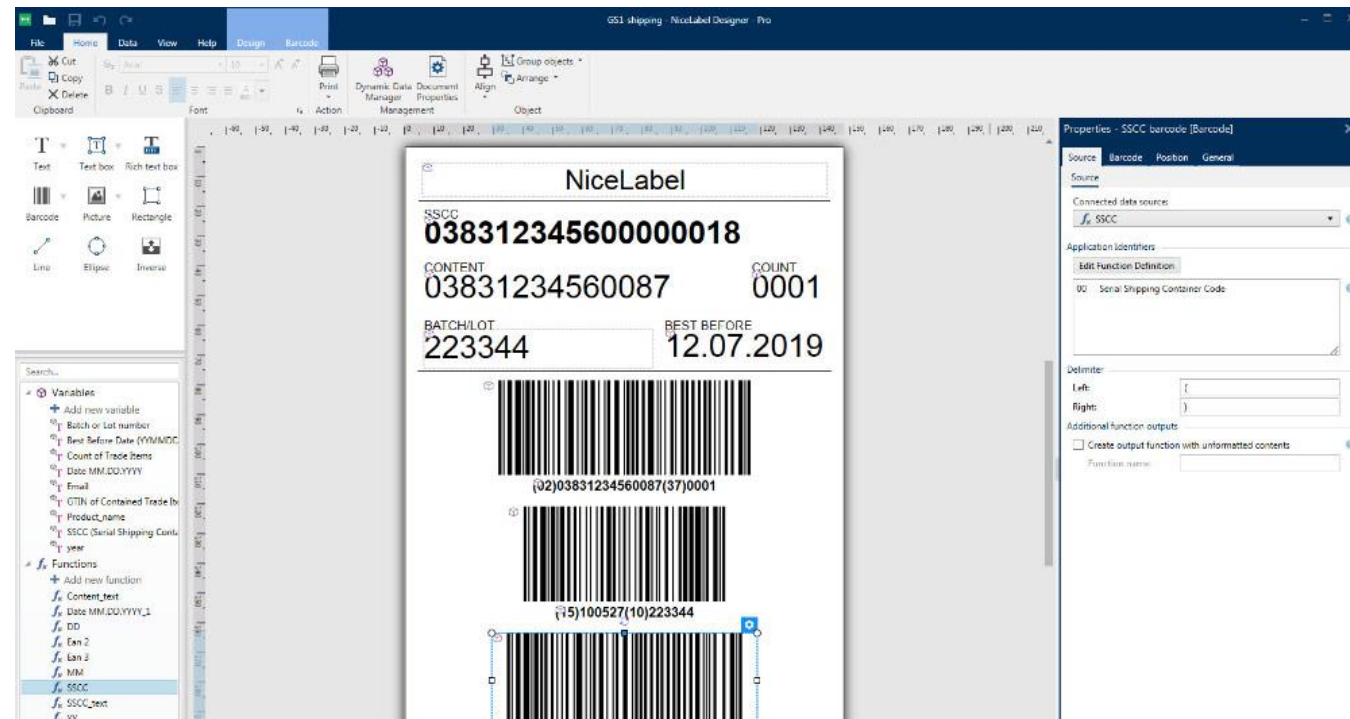
- Empower business users
- Make label changes quickly
- Reduce label variations

“Previously IT required a minimum of 8 weeks and 3K for each change request”

Aloys Prünke

Segment Marketing Manager

KNAUFINSULATION



Easy label designer

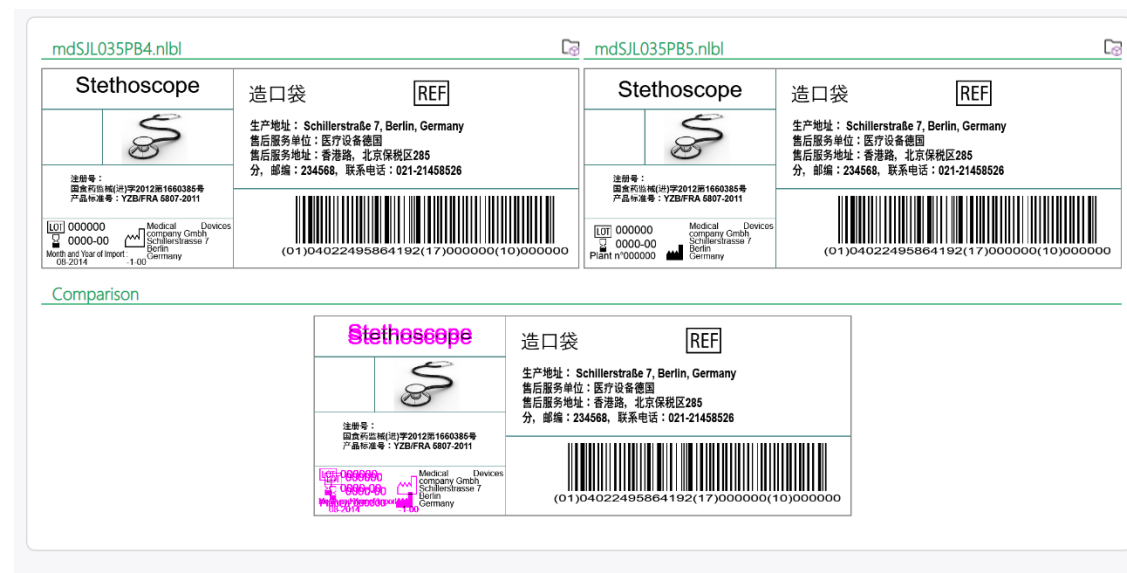
B) Digitalize labeling QA

Reduce risks and QC costs

- Eliminate paper-based processes
- Faster review and approval
- Prevent unauthorised changes

“Go from catching errors to preventing errors”

Dipika Solanki
Quality engineer



Digitalized quality control

C) Boost labeling efficiency

Achieve end-to-end operational improvement

- Improve print speed and productivity
- Eliminate downtime and shipping delays
- Standardize supplier labeling

Manufacturing

“We went from 8 seconds to 300ms to print each label”

Leon McDonnell
Siemens IT



Supplier labeling

“30 minutes to get a new supplier printing correct labels”

Simon Koch
Wuerth IT

What is the NiceLabel Label Management System?




Module	Benefit
Label designer Easy design with a familiar MS Word interface	Reduces IT costs and increases agility
Document management system Controls security, changes, history, devices, etc.	Improves QA process and reduces labor costs
Application builder Rapidly build customized printing and data management applications without coding	Improves productivity and accuracy for manual printing
Web printing system Deploy centralized printing and data management applications across the business	Increases consistency, scalability and operational efficiency for manual printing
Integration system Print from your existing business systems	Improves end-to-end operational efficiency

Document Management System (DMS)




Centralized Document Storage

- Role based access
- Indexing and search
- Version control
- Approval workflows
- Label comparison
- Label reports & digital catalogue
- Print history
- Label promotion and synchronization
- Print queue management




mdSJL035PB4.nlbl


Stethoscope	造口袋 REF
	生产地址：Schillerstraße 7, Berlin, Germany 售后服务单位：医疗设备德国 售后服务地址：香港路，北京保税区285分，邮编：234568，联系电话：021-21458526
注册号： 国食药监械(进)字2012第1660385号 产品标准号：YZB/FRA 5807-2011	 (01)04022495864192(17)000000(10)000000
LOT 000000 0000-00 Month and Year of Import: 08-2014	 Medical company GmbH Schillerstrasse 7 Berlin Germany

mdSJL035PB5.nlbl

Stethoscope	造口袋 REF
	生产地址：Schillerstraße 7, Berlin, Germany 售后服务单位：医疗设备德国 售后服务地址：香港路，北京保税区285分，邮编：234568，联系电话：021-21458526
注册号： 国食药监械(进)字2012第1660385号 产品标准号：YZB/FRA 5807-2011	 (01)04022495864192(17)000000(10)000000
LOT 000000 0000-00 Plant n°000000	 Medical company GmbH Schillerstrasse 7 Berlin Germany

Comparison

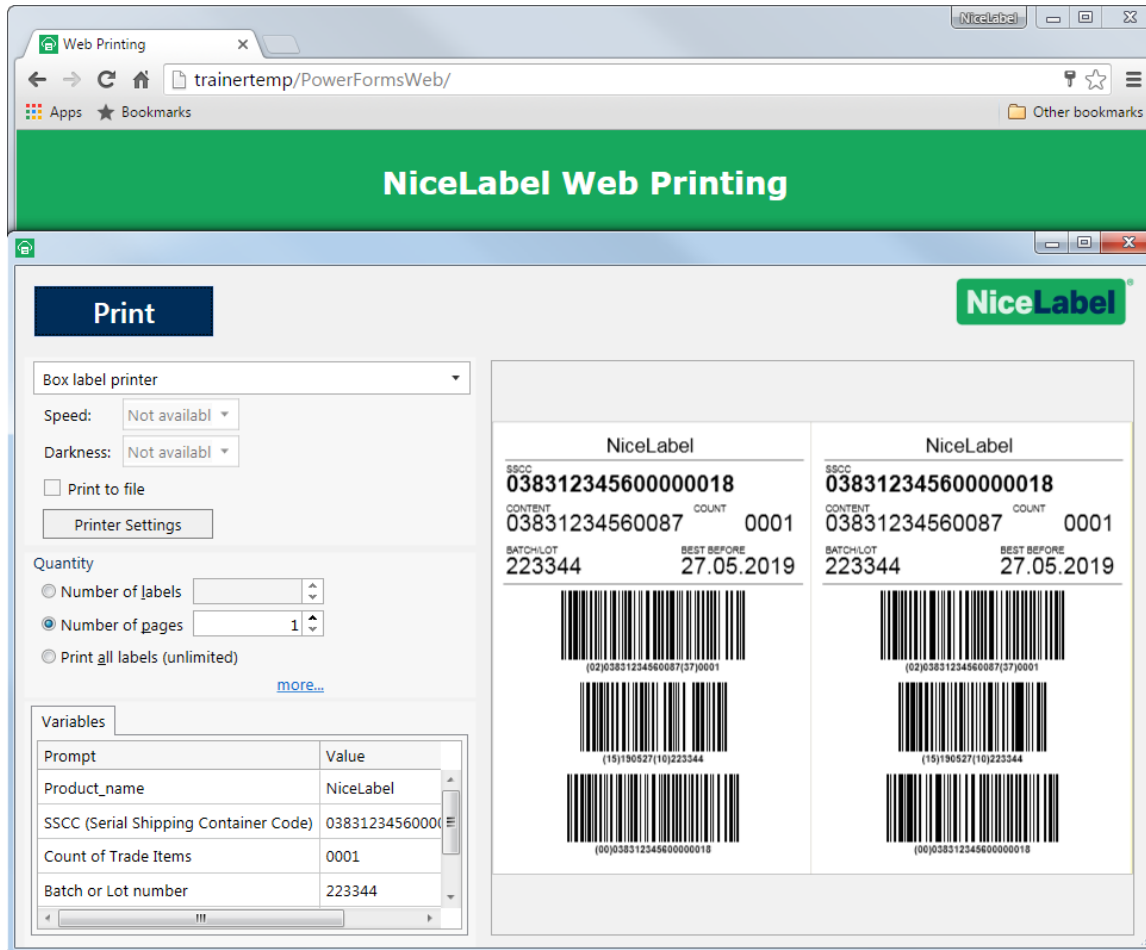
<p style="color: magenta;">Stethoscope</p>  <p>注册号： 国食药监械(进)字2012第1660385号 产品标准号：YZB/FRA 5807-2011</p> <p style="color: magenta;">LOT 000000 0000-00 Month and Year of Import: 08-2014</p> 	<p>造口袋 REF</p> <p>生产地址：Schillerstraße 7, Berlin, Germany 售后服务单位：医疗设备德国 售后服务地址：香港路，北京保税区285分，邮编：234568，联系电话：021-21458526</p>  (01)04022495864192(17)000000(10)000000
-------------------------------------------------------------------------------------------------------------------------------------------------------------------------------------------------------------------------------------------------------------------------------------------------------------------------------------------------------------------------------------------------	---------------------------------------------------------------------------------------------------------------------------------------------------------------------------------------------------------------------------------------------------------------------------------------------------------------------------------



Improves control, visibility, enables label consolidation and efficient collaboration

Web Printing System

Deploy manual printing forms via a browser



- Centralize management and deployment for all manual printing forms
- Deploy consistent labelling instantly without the label design or print only software installed on operator workstations
 - Extend to remote locations
 - Extend to business partners
 - Contract manufacturers
 - Suppliers
 - 3PL

Web Printing System

- **UNIQUE** client-side technology
 - Configurability (PowerForms)
 - Speed
 - Scalability
 - Self serviceable (Add and manage printers easily)
 - Cloud and on premise deployments
 - Offline support

WÜRTH LABEL PRINTING

alexp Sprache: Deutsch

Materialnummer

Vornummer: Abmessung: Aufmachung: Packgröße:

Vornummer	Abm. 1	Abm. 2	Aufmachung	Packgröße	EAN	Text1	Abmessung
0154	030	30	008	1000	404737686976	ASSY 3.0 Schrauben	3,0x30/25

Druckvorschau

Barcode: 4 0 4 7 3 7 6 8 6 9 7 6
 Art 0154 03030
 1000
 WÜRTH
 3,0x30/25
 ASSY 3.0 Schrauben
 Linsenkopf:AW 10
 Vollgewinde
 Stahl, vz.blau pass.(A2K)
 CAW
 Art 0154 03030 930916131
 1000 123123123ddw

Rückverfolgbarkeitsnummer

Kalenderwoche: Lieferantennummer:
 Jahr: Vertriebsplatz:
 Chargennummer: Layout:
 Schmelznummer: Version der LE BPVO:
 Preis: Preiseinheit: Währung:

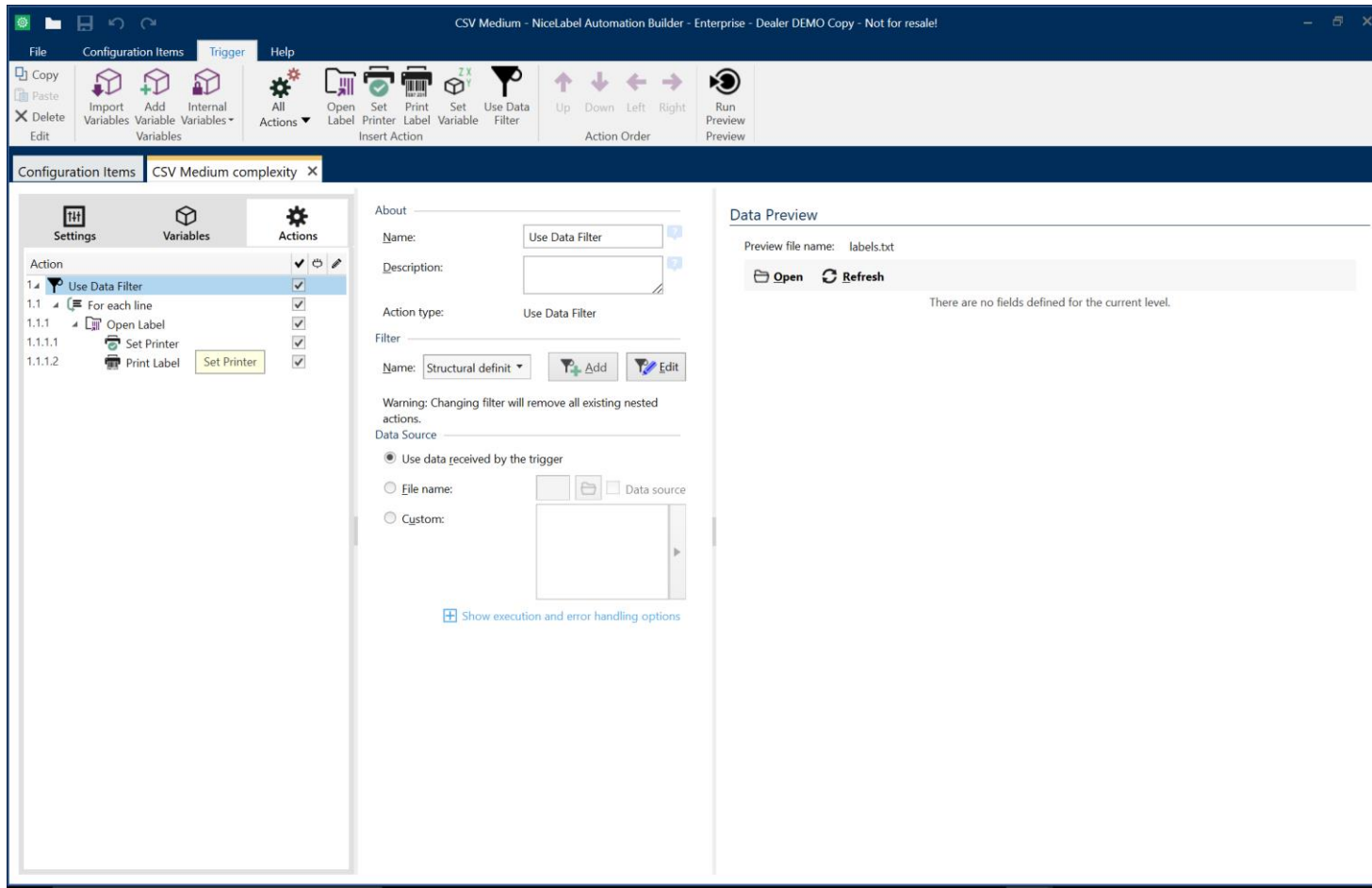
Drucker:

Material: Anzahl Etiketten:

WÜRTH GROUP © 2012-2015 Adolf Würth GmbH & Co. KG Impressum

Integration System

Rapidly integrate labelling with existing business systems



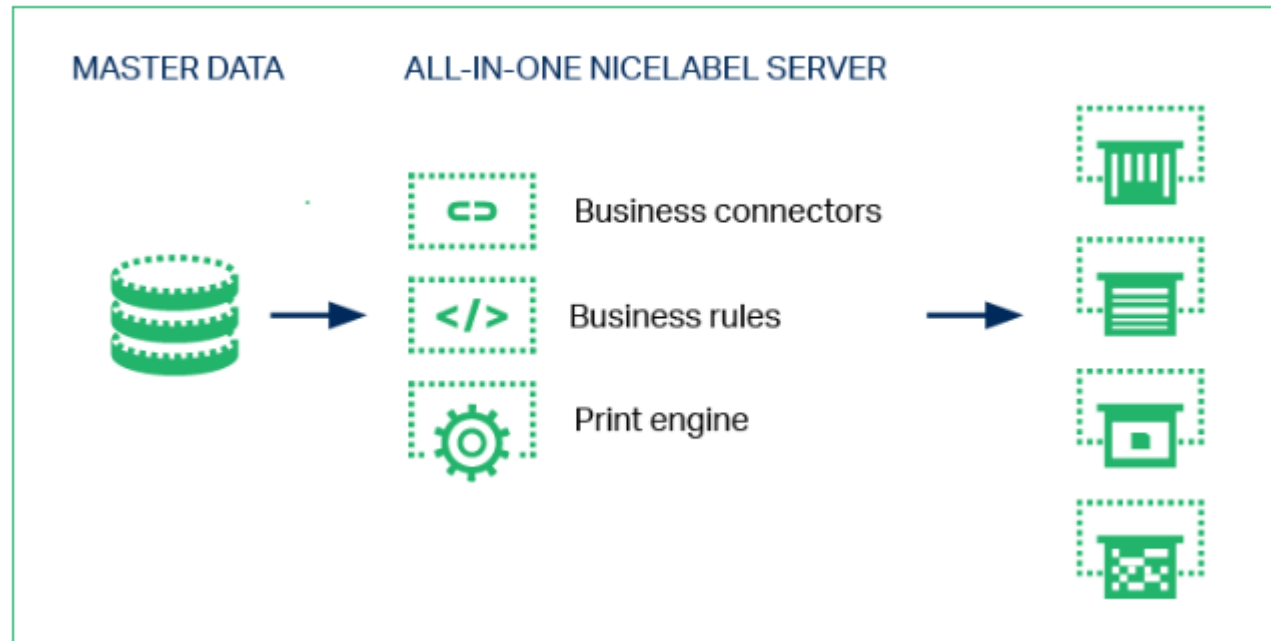
Print from existing business systems

- Includes ABAP package for SAP
- Universal Connectors and Data mapping provide integration without coding for any other business system

Print from iOS or Android devices

Integration System

100% next generation architecture



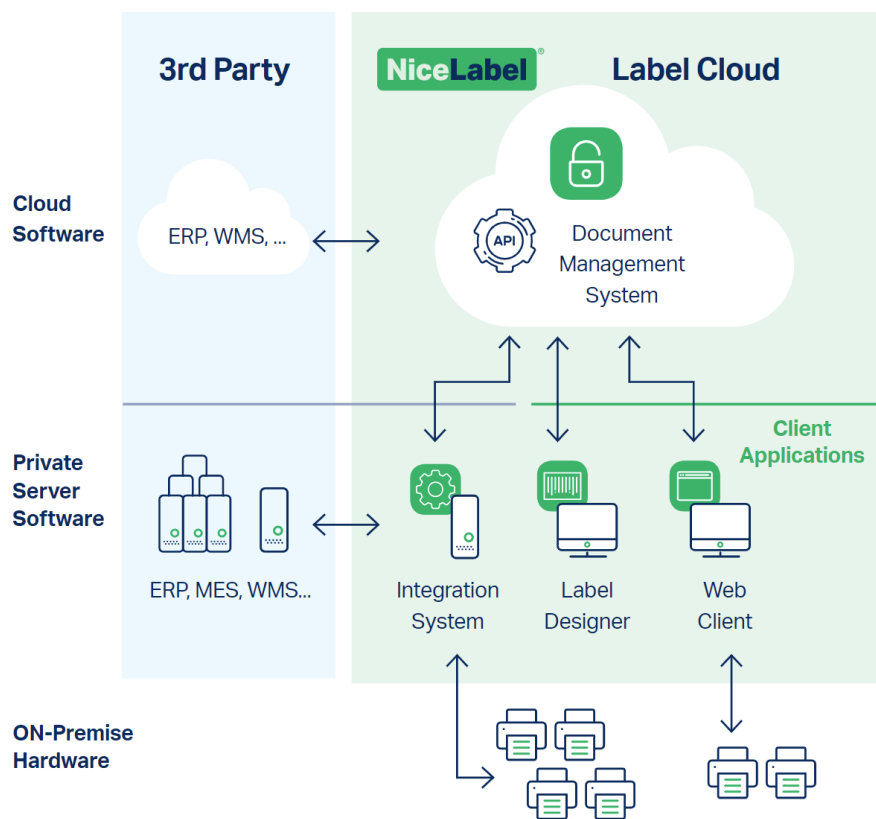
Extensively configurable without coding

- Rapid development
- Easy to support

Architected for reliability & scalability

- Mission critical printing
- Ultra fast performance
- Next generation print engine
- Market proven

Deployment options



Perpetual / On-Premise

LMS Enterprise is an on-premise edition of our label management system that is hosted on your own IT infrastructure.

SaaS / Cloud

Label Cloud is a public cloud edition of our label management system. It is multi-tenant and hosted in the Microsoft Azure cloud. It is our out-of-the-box service that requires no IT infrastructure, installation or IT support.

Positioning

Who is it for?

5 to 5000 users

SME to enterprise with QMS or Regulatory requirements (ISO 9001, EU or FDA GMPs)

What need does it solve?

Manage quality and security of labeling to decrease risks and hidden costs.

	<u>LMS Pro</u>	<u>LMS Enterprise</u>
Document management system	Control Center Pro	Control Center Enterprise
Web printing system	PowerForms Web	PowerForms Web
Integration system	Automation Pro	Automation Enterprise

Pricing

Product	Number of users / workstations	Number of printers	List price €	1 Year SMA €	3 Year SMA €
LMS Pro 5	unlimited	5	3.495	699	1.749
LMS Pro 10	unlimited	10	5.995	1.199	2.999
LMS Pro 20*	unlimited	20	9.995	1.999	4.999
LMS Enterprise 5	unlimited	5	7.495	1.499	3.749
LMS Enterprise 10	unlimited	10	12.995	2.599	6.499
LMS Enterprise 20**	unlimited	20	21.995	4.399	10.999

* Call for more users

** The product we recommend in this segment

Benefits of the Cloud



Quick and easy implementation



Reduction of IT costs



Security and high availability



Lower TCO and pay as you go



Global scalability



Futureproof and up-to-date

Products

Label Cloud Essentials

Entry level Label Management System for up to 20 printers

5-20 printers

35 €/printer/month*

Label Cloud Business

Full featured Label Management System for business of any size

5+ printers

65 €/printer/month*

Label Cloud Unlimited

Deeply customizable Label Management System for large enterprises

100+ printers

Call for price

Features

Editions	Label Cloud Essentials	Label Cloud Business	Label Cloud Unlimited
Document Management System	<ul style="list-style-type: none"> • Full digital DMS • 1GB storage space • 3 months print history 	<ul style="list-style-type: none"> • Full digital DMS • 5GB storage space • 1 year print history • Organizational Users (Active Directory integration) • Change and transport system 	<ul style="list-style-type: none"> • Full digital DMS • 20GB storage space • 5 years print history • Organizational Users (Active Directory integration) • Change and transport system
Label Design and Application Builder	Yes	Yes	Yes
Manual On-demand Web Printing	Yes	Yes	Yes
Integration System	N/A	<ul style="list-style-type: none"> • Yes incl. Cloud trigger • Runs on private infrastructure 	<ul style="list-style-type: none"> • Yes incl. Cloud trigger • Runs on private or hosted infrastructure
Customer Labelling Data Storage	Access & Excel in DMS	5GB cloud SQL database	100GB cloud SQL database
Support	Partner network & email	Priority email and phone during regional office hours (Standard SMA)	24/7/365, 1 hour response time (Platinum SMA)
Payable Options	<ul style="list-style-type: none"> • 1GB cloud SQL database 50 €/month • Extended print history (1 year) 50 €/month • Standard support 5 €/printer/month 	<ul style="list-style-type: none"> • Standard sandbox environment* 150 €/month • Extended print history (5 years) 100 €/month • Platinum support 5 €/printer/month 	<ul style="list-style-type: none"> • Multiple global deployments • Flexible sandbox environment • Hosted integration system • Flexible update schedule

*Standard Sandbox Environment = 5 printers, 1GB storage, 3 months print history

Services and support

Professional services group



We **UNDERSTAND** your challenges, so we can **DELIVER** the right solutions, and **SUPPORT** your business

- You can do it
- We can do it with you
- We can do it for you

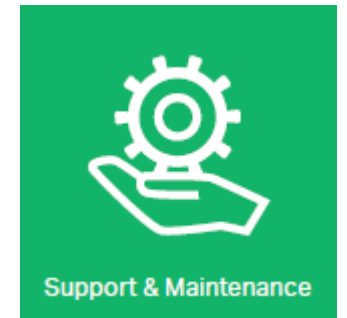
Software Maintenance Agreements (SMA)

Avoid unplanned downtime and assure you have access to NiceLabel experts

The NiceLabel Software Maintenance Agreement (SMA) assures you have access to NiceLabel experts to quickly resolve any issues with your labelling system.

Benefits:

- Direct access to NiceLabel's expert technical support
- Assurance of minimal unplanned downtime
- Assurance of access to the NiceLabel development team (if needed)
- Software updates



Direct access to the experts and the developers

- The NiceLabel technical support teams work closely with the NiceLabel developers to ensure you receive the fastest and best possible support avoiding any unplanned downtime.

Software updates

- We regularly enhance NiceLabel to incorporate new features and fixes. You receive notifications about and access to the latest software updates.