



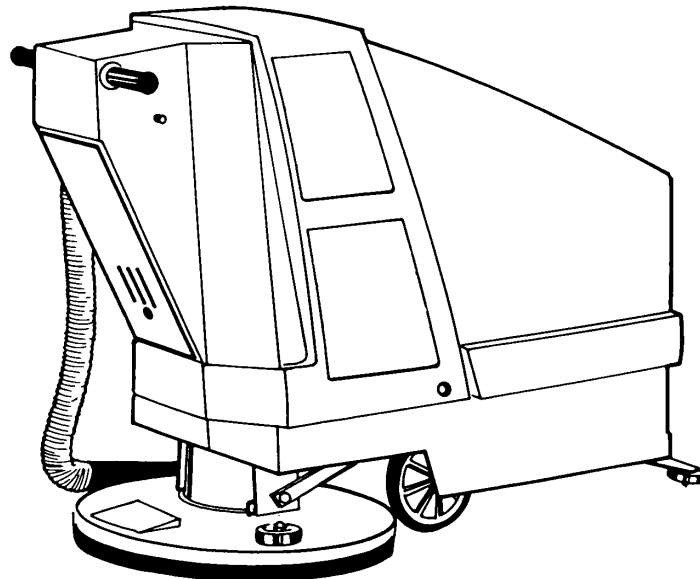
BR-2250/BR-2500

Burnisher

Model No.:

- 608342 – BR-2250
- 608343 – BR-2250 Pac
- 609248 – BR-2250 Can. Pac
- 608340 – BR-2500
- 608341 – BR-2500 Pac
- 609247 – BR-2500 Can. Pac

Operator and Parts Manual



NOBLES
12875 RANSOM STREET
HOLLAND MI 49424 U.S.A.

CUSTOMER SERVICE: 1-800-365-6625
FAX: 1-800-678-4240

608376
Rev. 01 (11-01)

OPERATION

This manual is furnished with each new model. It provides necessary operation and maintenance instructions.

Read this manual completely and understand the machine before operating or servicing it.

When ordering replacement parts use the parts list section in this manual. Before ordering parts or supplies, be sure to have your machine model number and serial number available. Parts and supplies may be ordered by phone or mail from any authorized Service Center or Distributor.

This machine will provide excellent service. However, the best results will be obtained at minimum costs if:

- The machine is operated with reasonable care.
- The machine is maintained regularly - per the machine maintenance instructions provided.
- The machine is maintained with manufacturer supplied or equivalent parts.

MACHINE DATA

Please fill out at time of installation for future reference.

Model No.- _____

Install. Date - _____

Serial No.- _____

© 2001 Tennant Company

Printed in U.S.A.

Nobles is a registered United States trademark of Tennant Company.

Specifications and parts are subject to change without notice.

TABLE OF CONTENTS

| | |
|--------------------------------------|-----------|
| SAFETY PRECAUTIONS | 3 |
| MACHINE COMPONENTS | 4 |
| CONTROL PANEL SYMBOLS | 4 |
| MACHINE SETUP | 5 |
| INSTALLING BATTERIES | 5 |
| INSTALLING PAD | 5 |
| MACHINE OPERATION | 6 |
| PRE-OPERATION | 6 |
| BURNISHING WITH BR-2250 MODEL | 6 |
| BURNISHING WITH BR-2500 MODEL | 6 |
| ADJUSTING PAD PRESSURE | 7 |
| BATTERY LEVEL METER | 8 |
| HOUR METER | 8 |
| CARBON BRUSH INDICATOR LAMP | 8 |
| CHARGING BATTERIES | 9 |
| MACHINE MAINTENANCE | 10 |
| DAILY MAINTENANCE: | 10 |
| WEEKLY MAINTENANCE: | 11 |
| MONTHLY MAINTENANCE: | 11 |
| QUARTERLY MAINTENANCE: | 11 |
| BATTERY MAINTENANCE: | 11 |
| TRANSPORTING MACHINE | 12 |
| STORING MACHINE | 12 |
| RECOMMENDED STOCK ITEMS | 12 |
| SPECIFICATIONS | 12 |
| TROUBLE SHOOTING | 13 |


| | |
|----------------------------------|-----------|
| ELECTRICAL DIAGRAMS | 14 |
| PARTS LIST | 16 |
| FRAME GROUP | 16 |
| DRIVE GROUP | 18 |
| COVER GROUP | 20 |
| COMPONENT PANEL GROUP | 22 |
| INSTRUMENT PANEL GROUP (BR-2250) | 24 |
| INSTRUMENT PANEL & SPEED CONTROL | |
| GROUP (BR-2500) | 26 |
| PAD SHROUD LINKAGE GROUP | 28 |
| PAD DRIVER GROUP | 30 |
| PAD MOTOR BREAKDOWN | 32 |
| DRIVE MOTOR BREAKDOWN | 33 |
| BATTERY GROUP | 34 |


SAFETY PRECAUTIONS

This machine is suited to burnish smooth floor surfaces in an indoor environment and is not constructed for any other use. The pick up of any liquid or hazardous type of dust is prohibited.

Use only recommended burnishing pads and non-flammable floor cleaners and waxes intended for machine application.

The following safety alert symbols are used throughout this manual as indicated in their descriptions.

 **WARNING:** To warn of hazards or unsafe practices which could result in severe personal injury or death.

 **CAUTION:** To warn of hazards or unsafe practices which could result in minor personal injury.

FOR SAFETY: To identify actions which must be followed for safe operation of equipment.


The following information signals potentially dangerous conditions to the operator or equipment:

FOR SAFETY

1. **Do not operate machine:**
 - Unless trained and authorized.
 - Unless operation manual is read and understood.
 - In flammable or explosive areas.
 - Without dust bag in place.
2. **Before starting machine:**
 - Make sure all safety devices are in place and operate properly.
3. **When using machine:**
 - Go slow on inclines and slippery surfaces.
 - Use care when reversing machine.
 - Report machine damage or faulty operation immediately.
4. **Before leaving or servicing machine:**
 - Stop on level surface.
 - Turn off machine.
 - Remove key.


5. When servicing machine:

- Avoid moving parts. Do not wear loose jackets, shirts, or sleeves.
- Block machine tires before jacking machine up.
- Use hoist or jack of adequate capacity to lift machine.
- Disconnect battery connections before working on machine.
- Wear protective gloves when handling batteries or battery cables.
- Avoid contact with battery acid.
- Use manufacturer supplied or approved replacement parts.

 **WARNING:** Batteries emit hydrogen gas. Explosion or fire can result. Keep sparks and open flame away. Keep battery compartment open when charging.

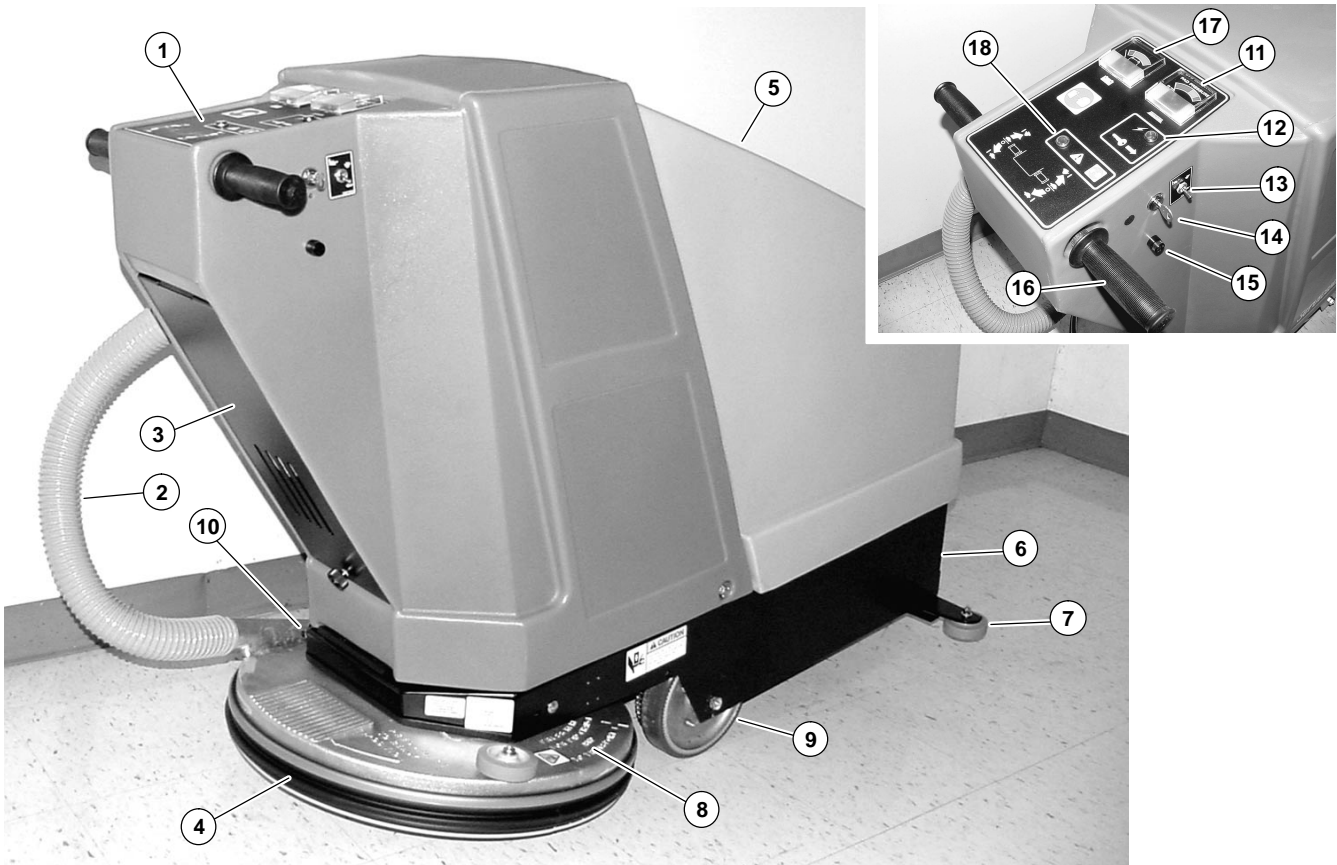
 **WARNING:** Flammable materials or reactive metals can cause explosion or fire. Do not pick up.

 **WARNING:** Moving parts. Turn off power before working on machine.

 **CAUTION:** Pad head must be in full up (pad load) position before making pad pressure adjustment.

OPERATION

MACHINE COMPONENTS



- | | |
|-------------------------|-----------------------------------|
| 1. Control Console | 10. Circuit Breakers |
| 2. Dust Control Hose | 11. Pad Pressure Meter |
| 3. Dust Bag Access Door | 12. Key ON Light |
| 4. Dust Control Skirt | 13. Travel Speed Selection Switch |
| 5. Battery Cover | 14. Key Switch |
| 6. Frame | 15. Fuse Holder |
| 7. Wall Rollers | 16. Control Grips |
| 8. Pad Driver | 17. Battery Level Meter |
| 9. Main Wheels | 18. Carbon Brush Indicator Lamp |

CONTROL PANEL SYMBOLS



Main Power



Pad



Battery
Charge Meter



Fast
Speed



Slow
Speed



Read Manual
Before Operating

MACHINE SETUP

Carefully check carton for signs of damage. Report damages at once to the carrier.

Unpack the machine and check machine for completeness according to the packing list.

INSTALLING BATTERIES

Battery installation must be accomplished after removing the machine from the pallet. Carefully follow the battery installation diagram below.

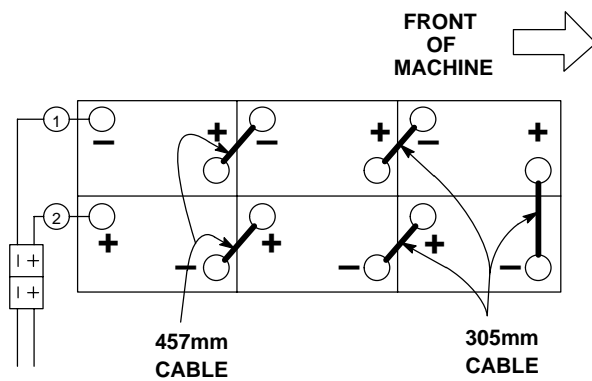


FIG. 1

⚠ WARNING: Batteries emit hydrogen gas. Explosion or fire can result. Keep sparks and open flame away. Keep battery compartment open when charging.

FOR SAFETY: When servicing machine, wear protective gloves when handling batteries or battery cables. Avoid contact with battery acid.

INSTALLING PAD

1. Select a burnishing pad that is designed to operate over 2000 RPM. The pad should be a maximum of 25.4 mm (1 inch) thick, 483 mm (19 inch) in diameter with a standard 89 mm (3.5 inch) center hole.

FOR SAFETY: Before leaving or servicing machine, stop on level surface and turn off machine.

2. Tap the right front side of the pad shroud with your toe. The head will rise to the pad mounting position (Figure 2).

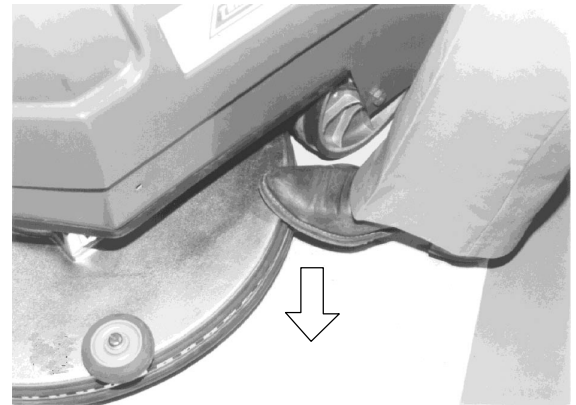


FIG. 2

3. Remove the plastic centerlock from the pad driver by turning it clockwise. Position the pad accurately centered on the pad driver, and screw the centerlock in place counter-clockwise until it is tight (Figure 3).

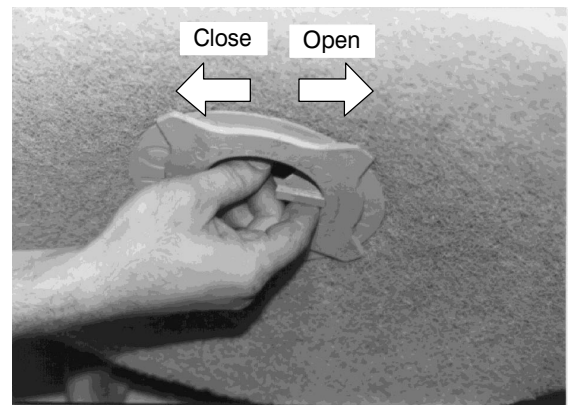


FIG. 3

NOTE: This machine is equipped with a pad centerlock with a left hand thread.

NOTE: Make sure centerlock does not cross thread or floor damage may occur.

ATTENTION: Do not operate machine without a pad and centerlock in place.

OPERATION

MACHINE OPERATION

FOR SAFETY: Do not operate machine unless operator manual is read and understood.

PRE-OPERATION

1. Check battery meter charge level to ensure batteries are fully charged. See CHARGING BATTERIES.
2. Sweep or dust mop the floor to remove debris. Then damp mop or scrub the floor to assure that dirt is not burnished into the finish.
3. Check that a pad is installed.
4. Check that a dust bag is installed.
5. Make sure floor to be burnished is dry.

BURNISHING WITH BR-2250 MODEL

1. Turn key switch to the "ON" position (Figure 4). The key ON light on the panel will light green.



FIG. 4

2. With the control grips released, step down on the rear of the pad shroud until the head locks in the down position (Figure 5).

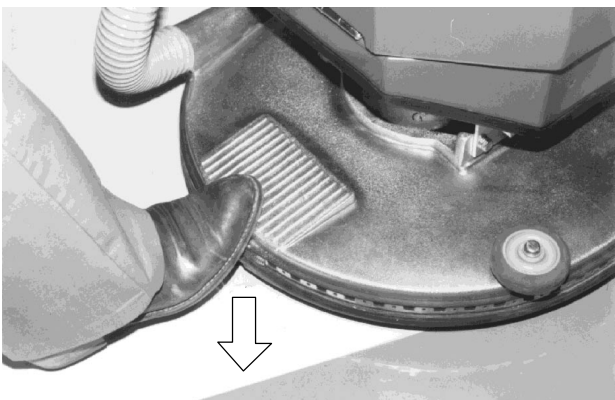


FIG. 5

3. Remove foot from the pad shroud.

4. Twist the control grips forward (Figure 6). The pad motor will start and suction will draw the moving pad to the floor. Immediately push or pull the machine in the desired direction.

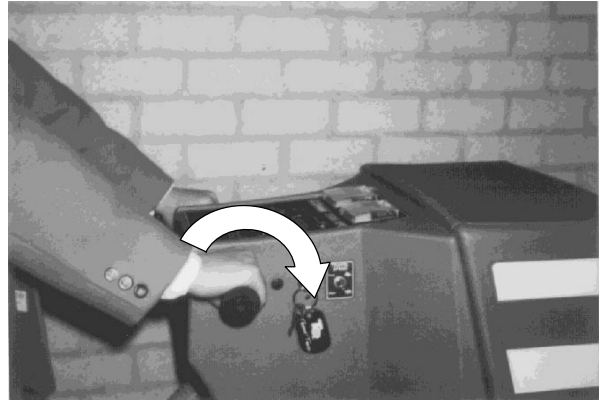


FIG. 6

FOR SAFETY: When using machine, go slow on inclines and slippery surfaces.

ATTENTION: Keep machine moving at all times to prevent floor damage.

5. To stop, release the control grips. The pad will automatically lift from the floor until the grips are activated again.

BURNISHING WITH BR-2500 MODEL

1. Turn the key switch to the "ON" position (Figure 4). The key ON light on the panel will light green.
2. With the control grips released, step down on the rear of the pad shroud until the head locks in the down position (Figure 5).
3. Remove foot from the pad shroud.
4. Select a speed with the travel speed selection switch (Figure 7):
UP position provides both slow and fast forward speeds.
DOWN position provides slow forward speed only.
Use this position for maneuvering in tight areas.

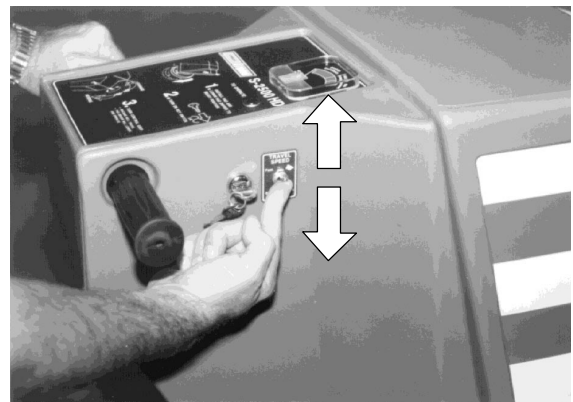


FIG. 7

5. Twist control grips forward until the pad motor starts (Figure 6). The machine will transport forward and suction will draw the moving pad to the floor.
6. To reverse, twist the control grips backward. The pad motor will start and the machine will transport backwards.
7. To stop, release the control grips.

FOR SAFETY: When using machine, go slow on inclines and slippery surfaces.

ATTENTION: Keep machine moving at all times to prevent floor damage.

8. To increase travel speed (mode switch in "UP" position), twist the control grips all the way forward to select the second (high) travel speed.
9. To stop, release the control grips and hold back on the machine until it stops moving. The reverse direction may be used as a stopping brake if desired.

NOTE: The drive circuit is equipped with a circuit breaker located on the lower left rear frame. If the driver system is overloaded during use the breaker will trip. Allow it to cool for a few moments and reset the breaker by pushing on the black button (Figure 8).



FIG. 8

ADJUSTING PAD PRESSURE

⚠ CAUTION: The pad head must be in the full up (pad load) position before making the pad pressure adjustment. **DO NOT ADJUST** in the down position as the head could release and pinch arm or fingers in the mechanism.

1. Your machine has a pad pressure meter located on top of the control console. This meter has one green bar and 2 red bars (Figure 9):

GREEN BAR: The operating zone within which the needle must read.

RED BAR TO THE RIGHT: Indicates too much pressure or pad resistance.

RED BAR TO THE LEFT: Indicates too low pressure or that the battery charge is low.



FIG. 9

2. Operate the machine on the actual floor with the finish and pad you will be using. Notice the needle position on the meter. For most jobs the needle should be in the center of the green bar.
3. If the needle is not in the center of the green bar, raise the pad head into the full up position and locate the pad pressure knob under the rear frame (Figure 10).

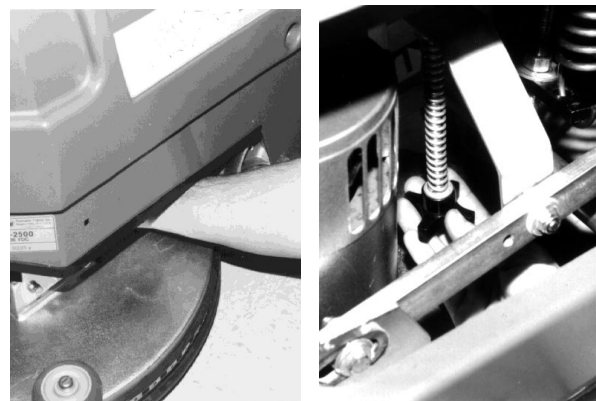


FIG. 10

4. If the needle indicates too much pressure turn the knob counterclockwise and repeat testing until the needle is in the center.
5. If the needle indicates too little pressure turn the knob clockwise and repeat testing until the needle is in the center.

NOTE: Increasing pad pressure will improve shine but it will also reduce battery run time.

ATTENTION: Do not adjust the pressure so the needle runs in the right red bar. This will cause the circuit breaker to trip.

OPERATION

6. If high performance is needed and run time is not a consideration, adjust the pressure so the needle runs in the higher (right side) of the green bar.
7. If long run time is needed, adjust the pressure so the needle runs in the lower (left side) of the green bar.

Once initial pad pressure has been set:

8. If during use the needle moves into the right red bar, it will cause the circuit breaker to trip. Allow the pad motor to cool down and then press the pad motor circuit breaker red reset button.
9. If the needle moves again into the right red bar and the circuit breaker trips, the pad may have become dirty and filled with finish. Turn the pad over to a clean side or replace the pad. Then reset the circuit breaker. To remove/change pads see INSTALLING PAD .

NOTE: The operator should watch the pad meter during operation and change the pad before the circuit breaker trips.

10. If the needle drops into the left red bar, this indicates the battery charge is low and recharging is required. See CHARGING BATTERIES section.

BATTERY LEVEL METER

1. Your machine has a battery level meter located on top of the control console. This meter has one green bar and one red bar (Figure 11).

GREEN BAR: The operating zone within which the needle must read.

RED BAR: Indicates the batteries need to be recharged. See CHARGING BATTERIES section.



FIG. 11

HOUR METER

1. Your machine has an hour meter located inside the battery compartment next to the machine connector (Figure 12).

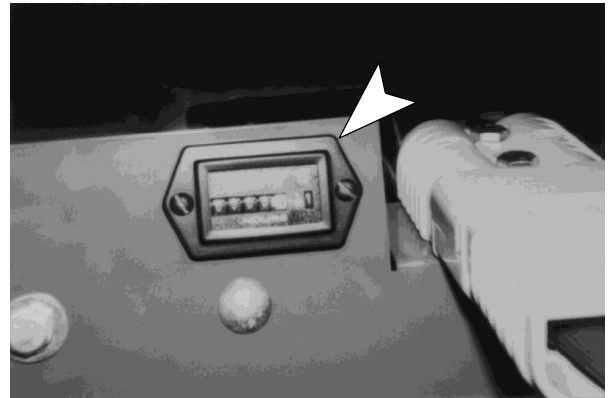


FIG. 12

2. To gain access to this meter remove the battery cover.
3. This meter keeps a running total of the hours of operation of your machine.
4. Use this meter to determine when your machine should to be maintained.

CARBON BRUSH INDICATOR LAMP

1. Your machine has an amber carbon brush indicator lamp which will light when the carbon brushes in the pad drive motor need to be replaced (Figure 13). See QUARTERLY MAINTENANCE section.

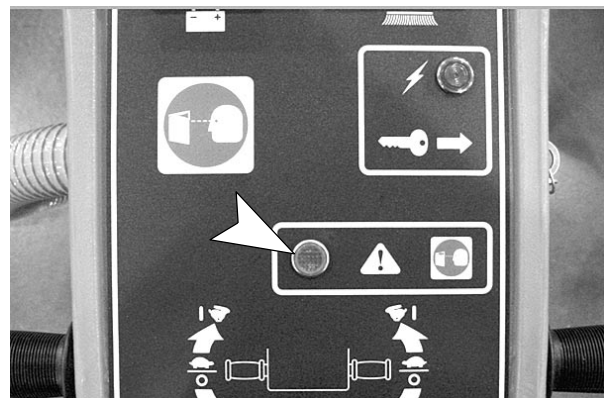


FIG. 13

CHARGING BATTERIES

NOTE: Recharge batteries *ONLY* after a total of 30 minutes of use or more. This will prolong battery life.

The following charging instructions are intended for supplied 36V chargers only. Only use a charger with the following specifications to prevent battery damage.

CHARGER SPECIFICATIONS:

- OUTPUT VOLTAGE - 36 VOLTS
- OUTPUT CURRENT - 25 AMPS MAXIMUM
- AUTOMATIC SHUTOFF CIRCUIT
- FOR DEEP CYCLE BATTERY CHARGING

NOTE: For optimum machine operation, keep batteries charged at all times. Never let batteries set in a discharge condition for lengthy periods.

⚠ WARNING: Batteries emit hydrogen gas. Explosion or fire can result. Keep sparks and open flame away. Keep battery compartment open when charging.

FOR SAFETY: When servicing machine, wear protective gloves when handling batteries or battery cables. Avoid contact with battery acid.

1. Transport machine to a flat, dry surface in a well-ventilated area for charging.
2. Turn off all switches and key.

FOR SAFETY: Before leaving or servicing machine, stop on level surface and turn off machine.

3. Slide the battery cover from the machine (Figure 14).



FIG. 14

4. Before charging batteries, check electrolyte level (A) in each battery cell. Do not charge batteries unless electrolyte is slightly covering battery plates (B). If battery plates (B) are exposed, add just enough distilled water to slightly cover plates, level (A). Never add acid to batteries. DO NOT overfill. Batteries can overflow during charging due to expansion. Replace cell caps before charging (Figure 15).

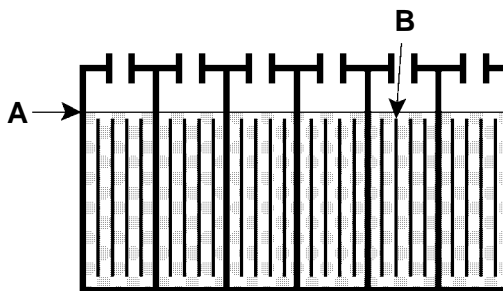


FIG. 15

NOTE: For machines with 305 amp batteries, to gain access to the 2 top rear battery cells, remove the 2 acorn nuts holding the console to the frame (Figure 16). Tip the console back on the hinge to access these cells.

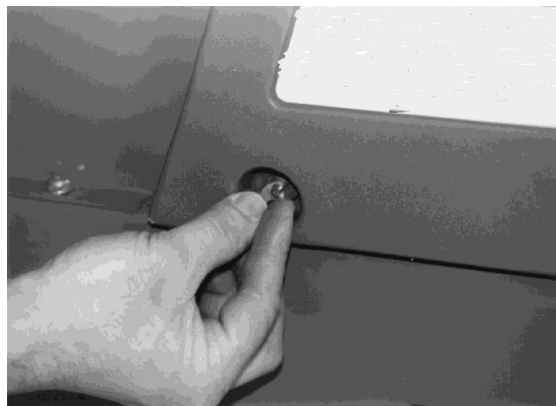


FIG. 16

5. Disconnect the battery plug from the machine (Figure 17). With charger's power supply cord unplugged, connect battery charger into battery plug.

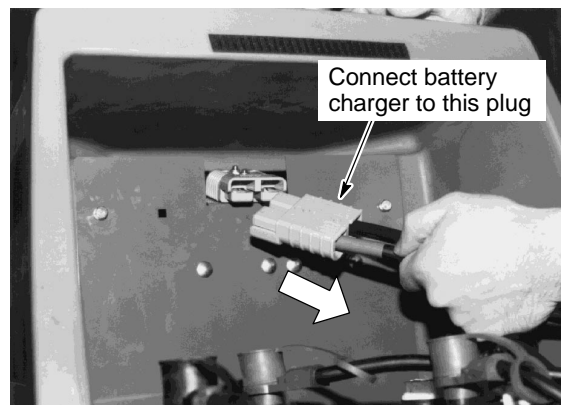


FIG. 17

OPERATION

NOTE: Do not connect the charger into the machine plug, or damage to the machine may occur.

- Then plug charger's power supply cord into a grounded wall outlet (Figure 18).

FOR SAFETY: Do not operate charger unless cord is properly grounded.

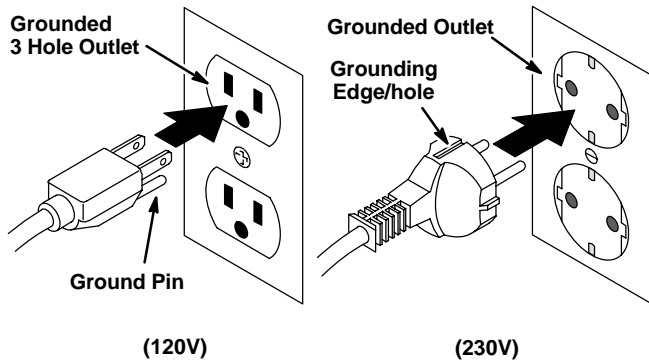


FIG. 18

- Charger will automatically begin charging and automatically shut off when fully charged.
- After charger has turned off, unplug charger from wall outlet first then disconnect charger from machine.
- Recheck battery electrolyte level (A) after charging. Add distilled water to bring level 1cm from bottom of sight tubes (B). Replace cell caps securely and wipe off the top of batteries with a clean cloth (Figure 19).

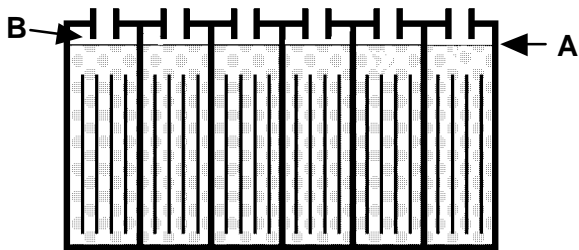


FIG. 19

MACHINE MAINTENANCE

To keep machine in good working condition, simply follow daily, weekly and monthly maintenance procedures.

FOR SAFETY: Before leaving or servicing machine, stop on level surface and turn off machine.

FOR SAFETY: When servicing machine, disconnect battery connections before working on machine.

ATTENTION: Contact an Authorized Service Center for machine repairs. Machine repairs performed by other than an authorized person will void your warranty.

DAILY MAINTENANCE (Every 4 Hours of Use)

- Remove burnishing pad. Clean and replace or install a new pad (Figure 20).

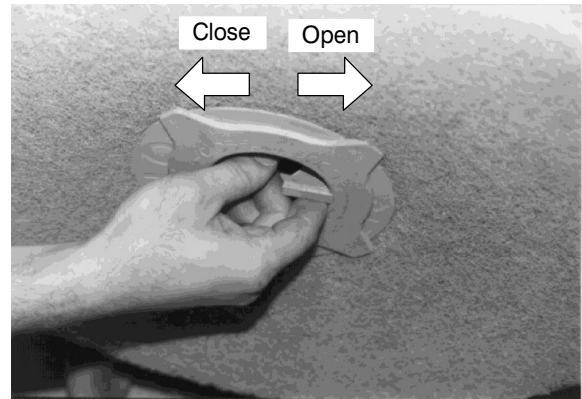


FIG. 20

- Dust bag maintenance: Open the dust bag access door to gain access to the dust bag (Figure 21).

Paper Bag: Grasp the bag to check the contents. Remove and discard the bag if it is full. Install a new bag on the fitting and close the dust bag access door.

Cloth Bag (Option): Remove the bag. Unzip, invert and shake the contents from the bag. Close the zipper and reinstall on the fitting. Close the dust bag access door.

NOTE: If the bag is extremely soiled, launder the bag before reuse.

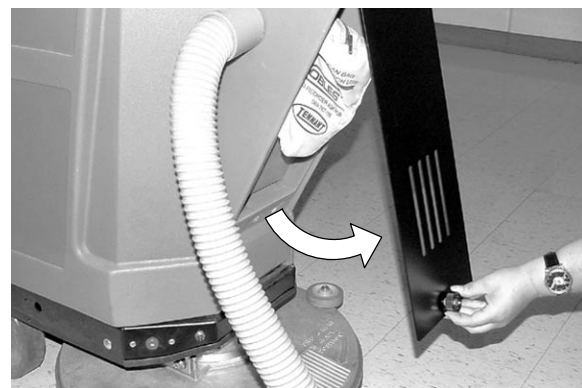


FIG. 21

3. Wipe the entire machine with a damp cloth.
4. Charge the batteries. See CHARGING BATTERIES.

NOTE: Recharge batteries **ONLY** after a total of 30 minutes of use or more. This will prolong battery life.

WEEKLY MAINTENANCE (Every 20 Hours of Use)

1. Inspect the dust control skirt for wear and proper adjustment. The skirt should be adjusted so it just touches the floor in the run position.
To adjust: Loosen the band and push the skirt down. Tighten the band.
2. Check the specific gravity in each battery cell with a hydrometer. All cells should show a reading of at least 1.260 (Figure 22).

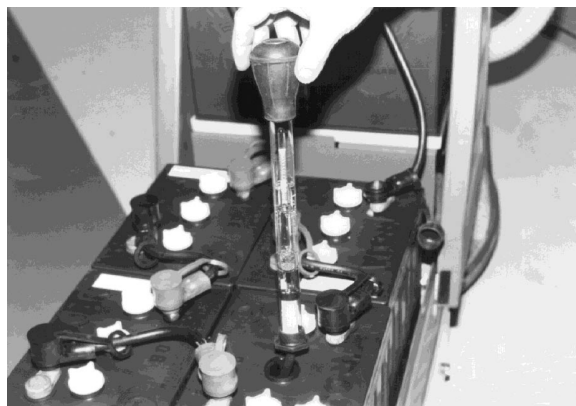


FIG. 22

MONTHLY MAINTENANCE (Every 80 Hours of Use)

1. Check battery cables for tightness or corrosion. Clean and lubricate if necessary.
2. Grease main wheel bearings and swivel and wheel on the caster (Figure 23).

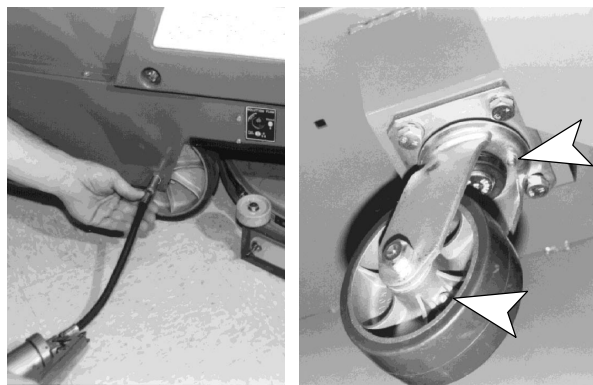


FIG. 23

3. For BR-2500 Model:
Check the lubrication and tension of the drive chain. If maintenance is necessary, ask assistance from your Authorized Service Center.
4. Grease the brass acorn nut on the head stop bracket.

QUARTERLY MAINTENANCE (Every 250 Hours of Use)

It is recommended that these maintenance procedures be performed by technicians from your authorized service center.

1. Inspect carbon brushes in the pad motor. Replace if worn to 10mm or less.
2. Inspect the carbon motor brushes in the traction motor. Replace if worn to 10mm or less.

BATTERY MAINTENANCE

⚠ WARNING: Batteries emit hydrogen gas. Explosion or fire can result. Keep sparks and open flame away. Keep battery compartment open when charging.

FOR SAFETY: When servicing machine, wear protective gloves when handling batteries or battery cables. Avoid contact with battery acid.

1. Always follow proper charging instructions (see CHARGING BATTERIES).
2. Each week **after** charging, check fluid level (A) in each battery cell of all batteries. The level should be 1cm from bottom of sight tubes (B). If needed, add just enough distilled water to raise level 1cm from bottom of sight tubes. **DO NOT** overfill (Figure 24).

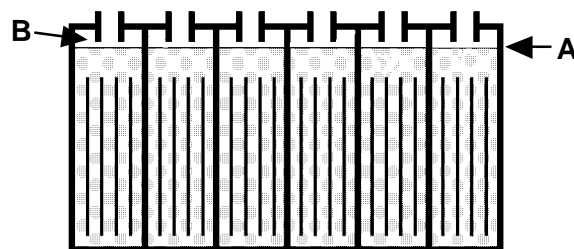


FIG. 24

OPERATION

3. Keep battery tops and terminals clean and dry.
 - a. Mix a strong solution of baking soda and water (Figure 25).



FIG. 25

- b. Brush solution sparingly over battery tops, terminals, and cable connectors.

NOTE: Do not allow baking soda solution to enter battery cells.
- c. Use wire brush to clean terminals and cable connections.
- d. After cleaning, apply a coating of clear battery post protectant to terminals and cable connections.

4. Check for loose or worn cables. Replace if worn.

TRANSPORTING MACHINE

When transporting machine by use of trailer or truck, be certain to follow tie-down procedures below:

1. Load machine using a recommended loading ramp.

NOTE: If lifting machine, you must remove batteries.

FOR SAFETY: When transporting machine, do not lift machine if batteries are installed.

2. Position front of machine up against front of trailer or truck bed.
3. Place blocks behind the main wheels.
4. Place tie-down straps over top of machine and secure straps to floor. It may be necessary to install tie-down brackets to the floor of your trailer or truck.

NOTE: Do not use control grips to secure machine for transporting.

STORING MACHINE

Store machine in a dry area in the upright position.

ATTENTION: Do not expose to rain. Store indoors.

RECOMMENDED STOCK ITEMS

Refer to the Parts List section in this manual for recommended stock items. Stock Items are clearly identified with a bullet preceding the parts description. See example below:

| Ref. | Part No. | Description | Qty. |
|------|----------|-----------------|------|
| 1 | 701103 | ASM., STANDPIPE | 1 |
| 2 | 180613 | ●FLOAT, SHUTOFF | 1 |
| 3 | 230187 | NIPPLE | 1 |
| 4 | 101714 | ●GASKET | 1 |
| 5 | 210240 | NUT, FLANGED | 1 |

SPECIFICATIONS

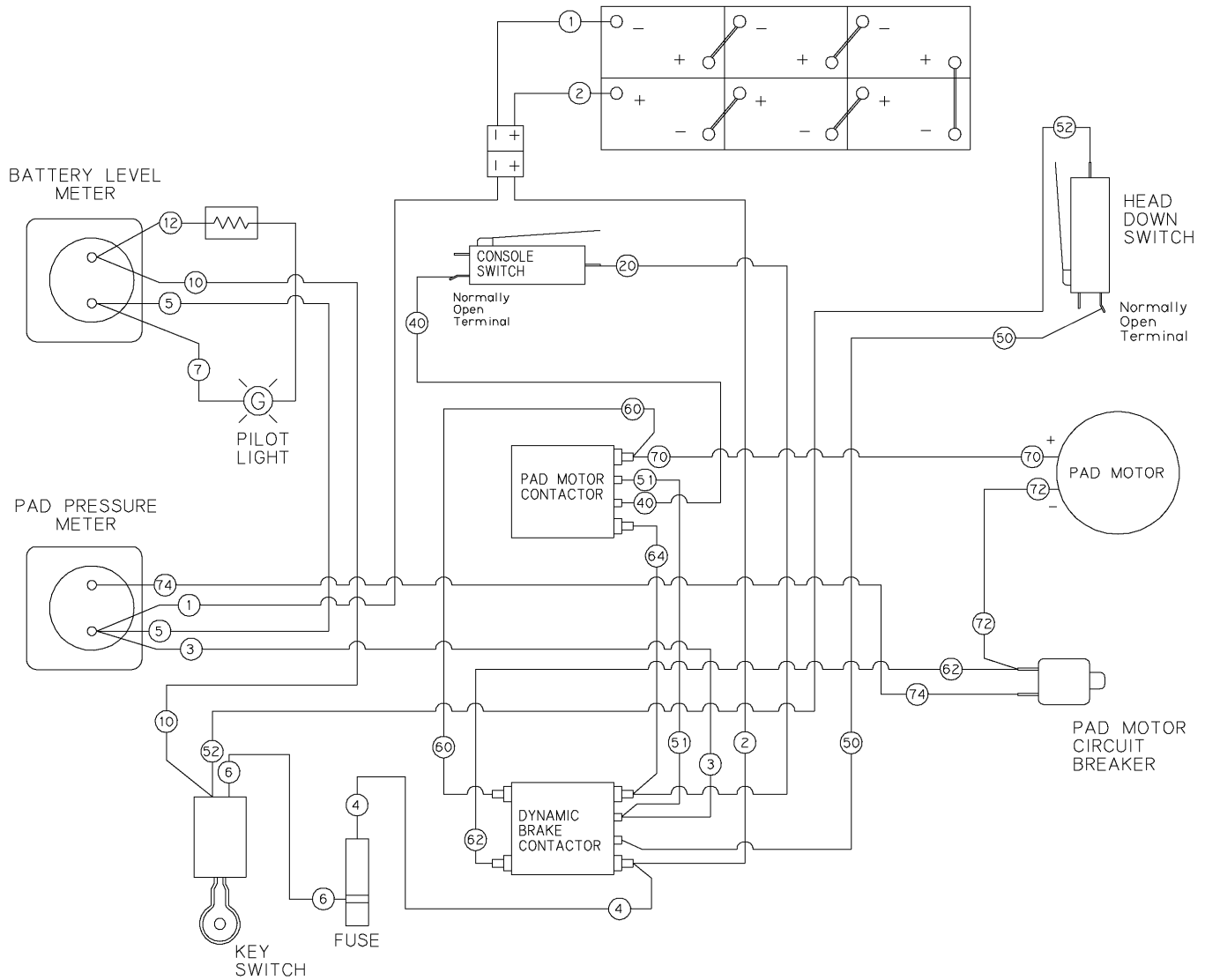
| ITEM | MEASURE |
|------------------------------|--|
| Length | 1350mm (53 in) |
| Width | 550mm (22 in) |
| Height | 1020mm (40 in) |
| Weight: BR-2250 | 104 kg (230 lb) (excluding batteries) |
| Weight: BR-2500 | 118 kg (260 LB) (excluding batteries) |
| Speed: BR-2250 | Push |
| Speed: BR-2500 | 5 k/hr (3 mph) |
| Pad Diameter/Burnishing Path | 483mm (19 in) |
| Pad Motor | 2,24 kW (3hp) |
| Pad Speed | 2,500 rpm |
| Battery Life: BR-2250 | 2,5-3,5 hours |
| Battery Life: BR-2500 | 2-3 hours |
| Decibel Level | 75 dBA |

TROUBLESHOOTING

| PROBLEM | CAUSE | SOLUTION |
|---|--|--|
| Machine does not operate. | Key switch is OFF. | Turn key switch ON. |
| | Battery connector is not plugged into machine connector. | Plug connector into machine. |
| | Batteries discharged. | Charge batteries. |
| | Ignition fuse blown. | Replace fuse. |
| | Loose or corroded battery cables. | Clean and lubricate. |
| | Electrical malfunction. | Contact Authorized Service Center. |
| Machine does not self-propel (BR-2500 ONLY). | Drive circuit breaker tripped. | Reset breaker. |
| | Drive chain broken. | Replace. |
| | Electrical malfunction. | Contact Authorized Service Center. |
| | Wheel bearing frozen. | Contact Authorized Service Center. |
| Pad motor does not operate. | Head not lowered and locked in ready (down) position. | Lower head into ready position. |
| | Pad circuit breaker tripped. | Reset breaker. |
| | Electrical malfunction. | Contact Authorized Service Center. |
| Pad drive motor circuit breaker trips continuously. | Dirty pad. | Replace. |
| | Improper pad for application. | Change to correct pad. |
| | Improper pressure adjustment. | Reduce pressure. |
| | Defective circuit breaker. | Contact Authorized Service Center. |
| | Worn motor brushes. | Contact Authorized Service Center. |
| Pad driver vibrates during use. | Pad off center. | Reposition pad. |
| | Pad out of round or damaged. | Replace with new pad. |
| | Pad driver damaged or out of balance. | Contact Authorized Service Center. |
| Batteries deliver below-normal run time. | Batteries not fully charged. | Charge batteries. |
| | Electrolyte level is low. | Fill to proper level and charge. |
| | Cables are loose or corroded. | Clean and lubricate. |
| | Pad pressure is too heavy. | Reduce pressure. |
| | Improper pad causing too much amp draw. | Change to proper pad. |
| | Charger is defective. | Contact Authorized Service Center. |
| | Battery is defective. | Contact Authorized Service Center. |
| Dust control ineffective. | Filter bag is full or dirty. | Empty, clean or replace. |
| | Skirt not adjusted properly or damaged. | Adjust skirt per instructions. |
| | Pad is worn excessively. | Replace pad. |
| | Dust control hose plugged with debris. | Clean out hose. |
| Transport drive circuit breaker trips during use. | Operator attempting inclines. | Machine not designed for inclines. |
| | Machine travel obstructed. | Remove obstruction. |
| | Operator using directional control as brake. | Do not use directional control as brake. |
| | Drive circuit breaker defective. | Contact Authorized Service Center. |
| | Drive Motor brushes worn. | Contact Authorized Service Center. |

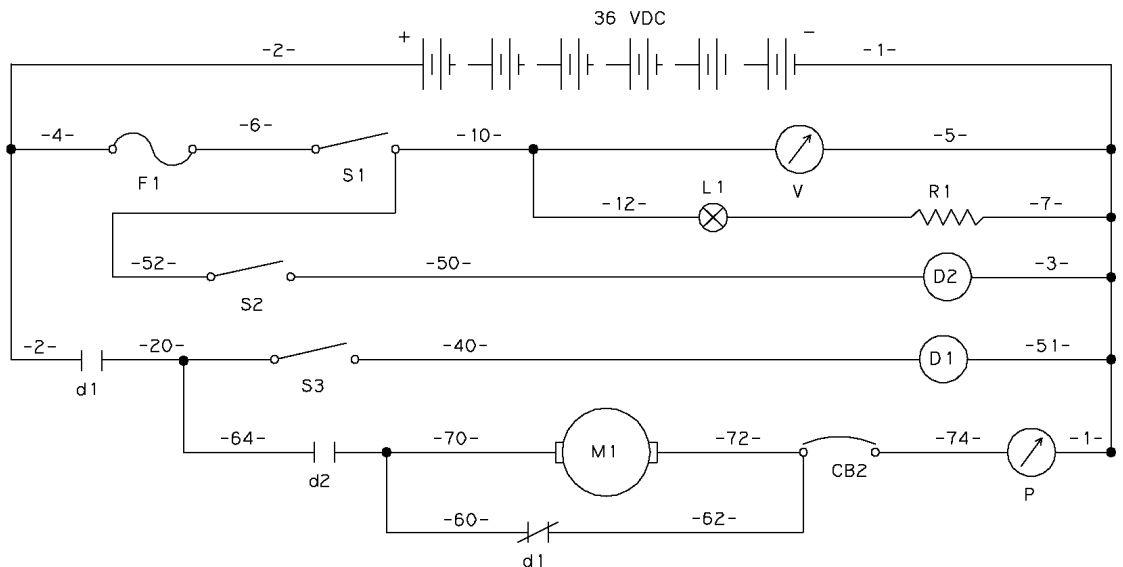
ELECTRICAL DIAGRAM

BR-2250 WIRE DIAGRAM

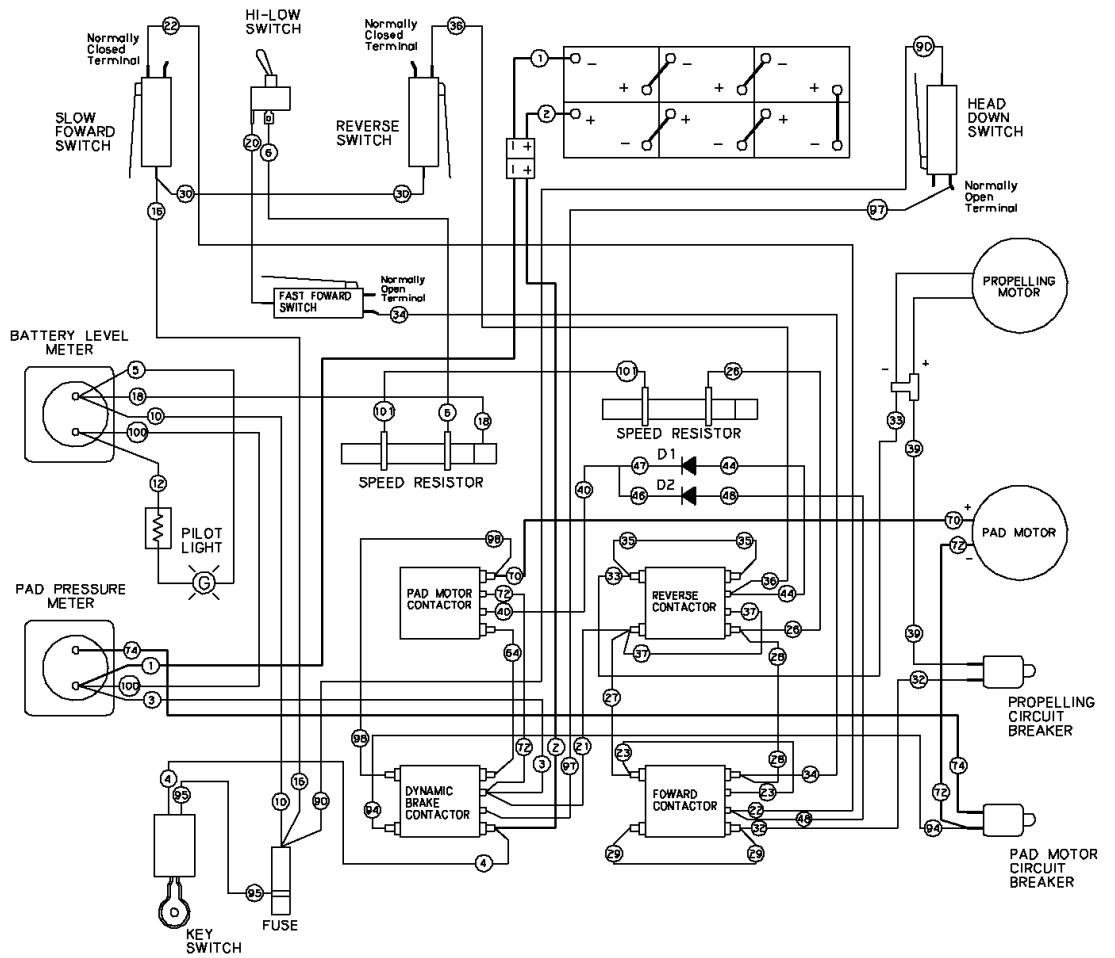


BR-2250 LADDER DIAGRAM

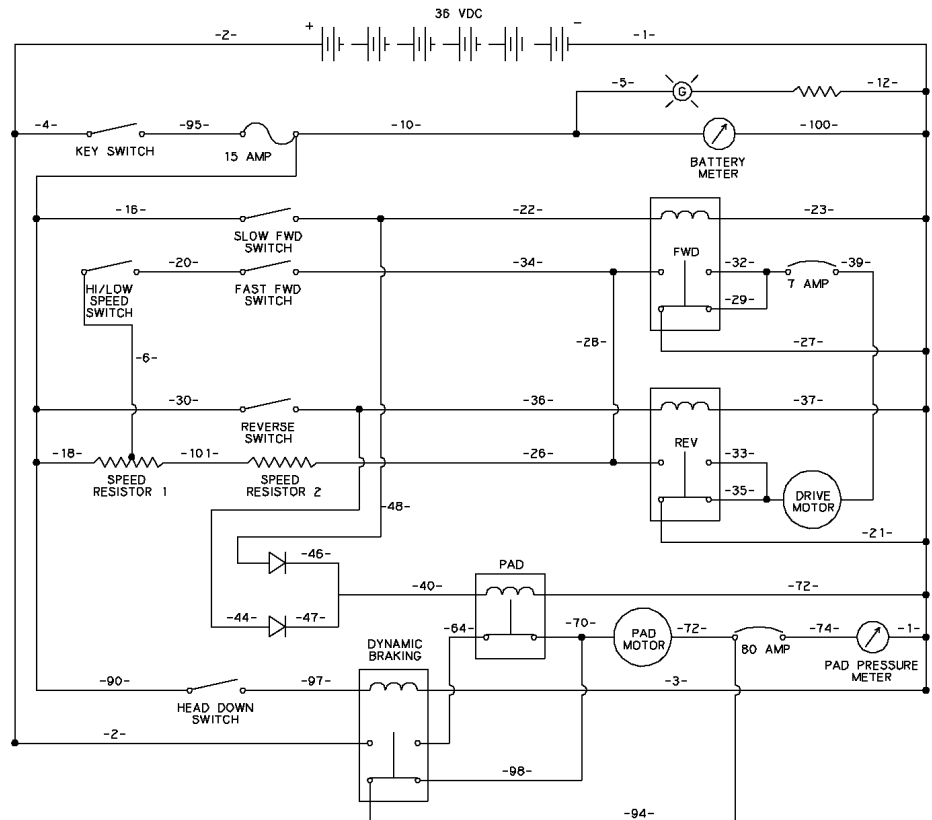
| REF | LEGEND |
|--------|----------------------|
| S1 = | Switch, Key |
| S2 = | Switch, Head down |
| S3 = | Switch, console |
| CB-2 = | Circuit Breaker 15A |
| D1 = | Relay, Brake |
| D2 = | Relay, Main pad |
| d1 = | Contact, brake relay |
| d2 = | Contact, pad relay |
| M1 = | Motor, pad |
| L1 = | Light, pilot |
| P = | Meter, pad press. |
| F1 = | Fuse |
| V = | Volt Meter |



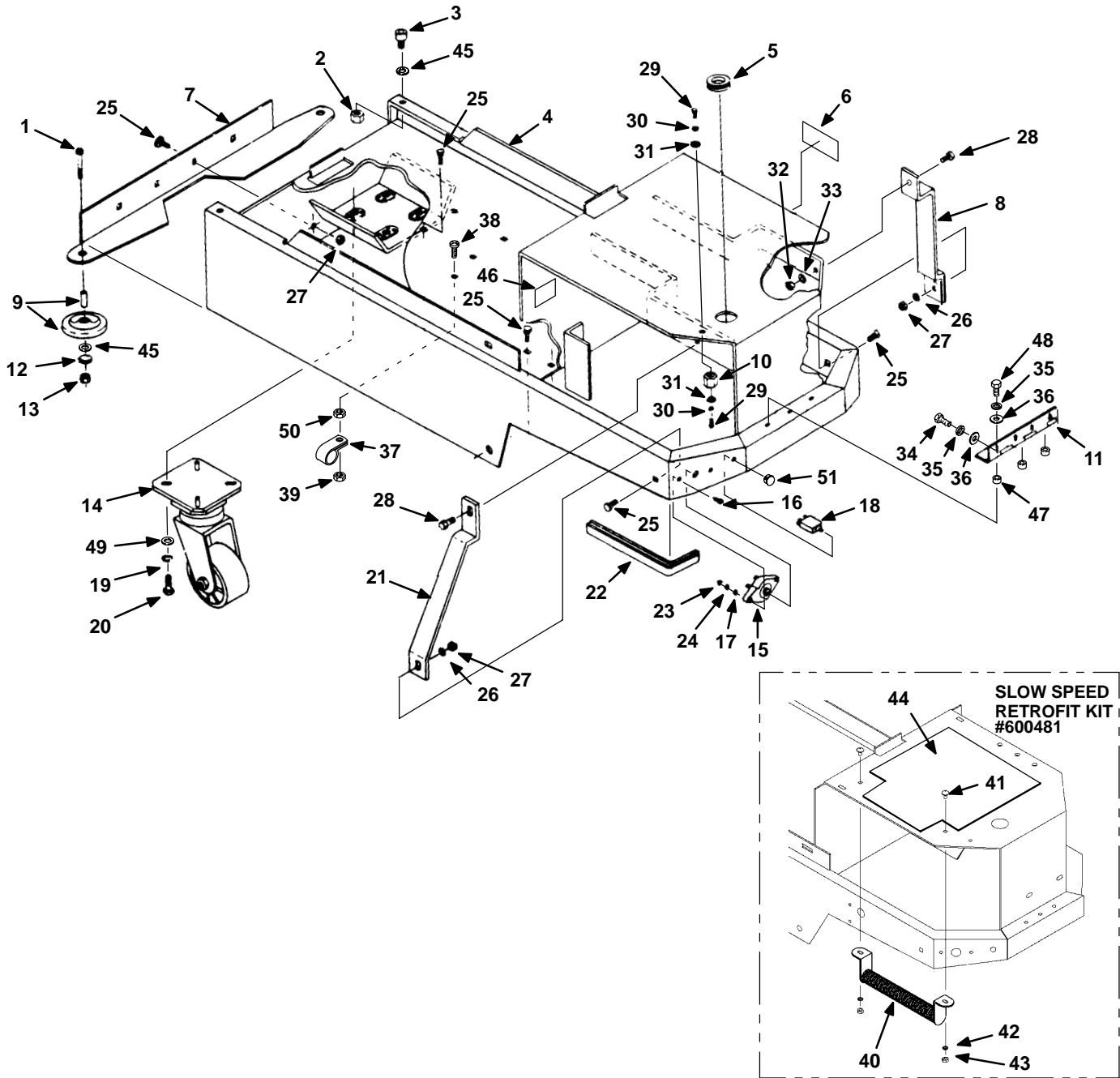
BR-2500 WIRE DIAGRAM



BR-2500 LADDER DIAGRAM



FRAME GROUP



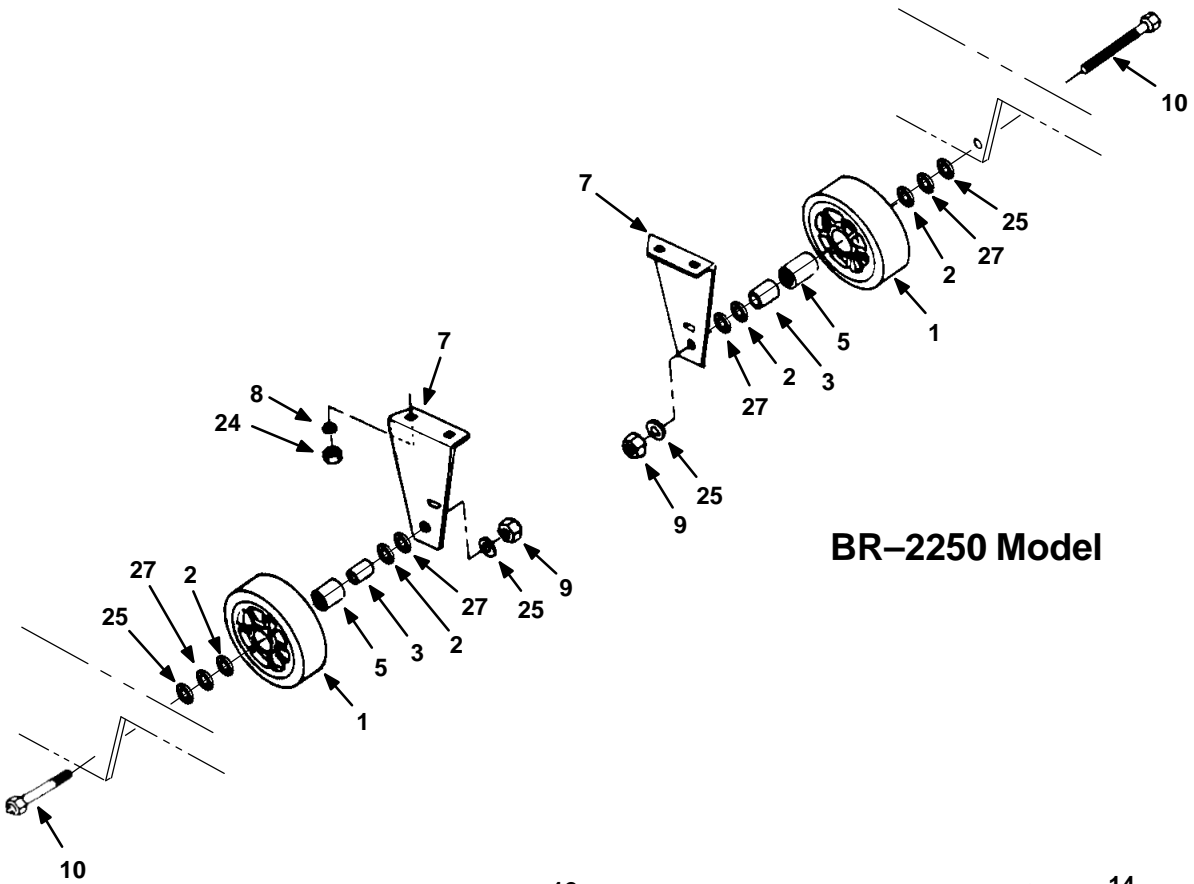
FRAME GROUP

| REF | PART # | DESCRIPTION | QTY. |
|-----|-----------|---|------|
| 1 | 621286000 | SCREW, M8 X 1.25 X 45 HXHDCP | 2 |
| 2 | 200160017 | NUT, M8 LOCK | 2 |
| 3 | 200001486 | SCREW, M8 X 1.25 X 16 SKHDCP | 2 |
| 4 | 069767001 | FRAME WELDT. | 1 |
| 5 | 069762009 | GROMMET | 1 |
| 6 | 602063000 | DECAL, CAUTION, PAD ADJUST. | 1 |
| 7 | 069767102 | BRACKET, WALL ROLLER | 1 |
| 8 | 069767178 | BRACKET, FRAME SUP. (BR-2500) | 1 |
| 9 | 630450 | WHEEL, RUBBER | 2 |
| 10 | 578427 | STANDOFF, TERMINAL | 1 |
| 11 | 069767036 | HINGE, SHROUD | 1 |
| 12 | 140015 | WASHER, 5/16 LOCK | 2 |
| 13 | 200640017 | NUT, M8 HEX | 2 |
| 14 | 069760030 | CASTER | 1 |
| 15 | 130781 | ●BREAKER, CIRCUIT, 80A | 1 |
| 16 | 602168000 | SCREW, #10-32 X 1 PAN HD. | 2 |
| 17 | 069762056 | WASHER, #10 FLAT | 2 |
| 18 | 069767136 | ●BREAKER, CIRCUIT, 7A (BR-2500) | 1 |
| 19 | 200351020 | WASHER, M10.2 LOCK | 4 |
| 20 | 200031541 | SCREW, 10 X 25 HXHDCP | 4 |
| 21 | 069767174 | BRACKET, FRAME SUP. (BR-2500) | 1 |
| 22 | 180014003 | EDGING, 20" | 1 |
| 23 | 575380 | NUT, #10-32 HEX | 2 |
| 24 | 069762005 | WASHER, #10 FLAT | 2 |
| 25 | 069767077 | SCREW, 5/16-18 X 3/4 CARRIAGE (BR-2250) | 8 |
| | 069767077 | SCREW, 5/16-18 X 3/4 CARRIAGE (BR-2500) | 14 |

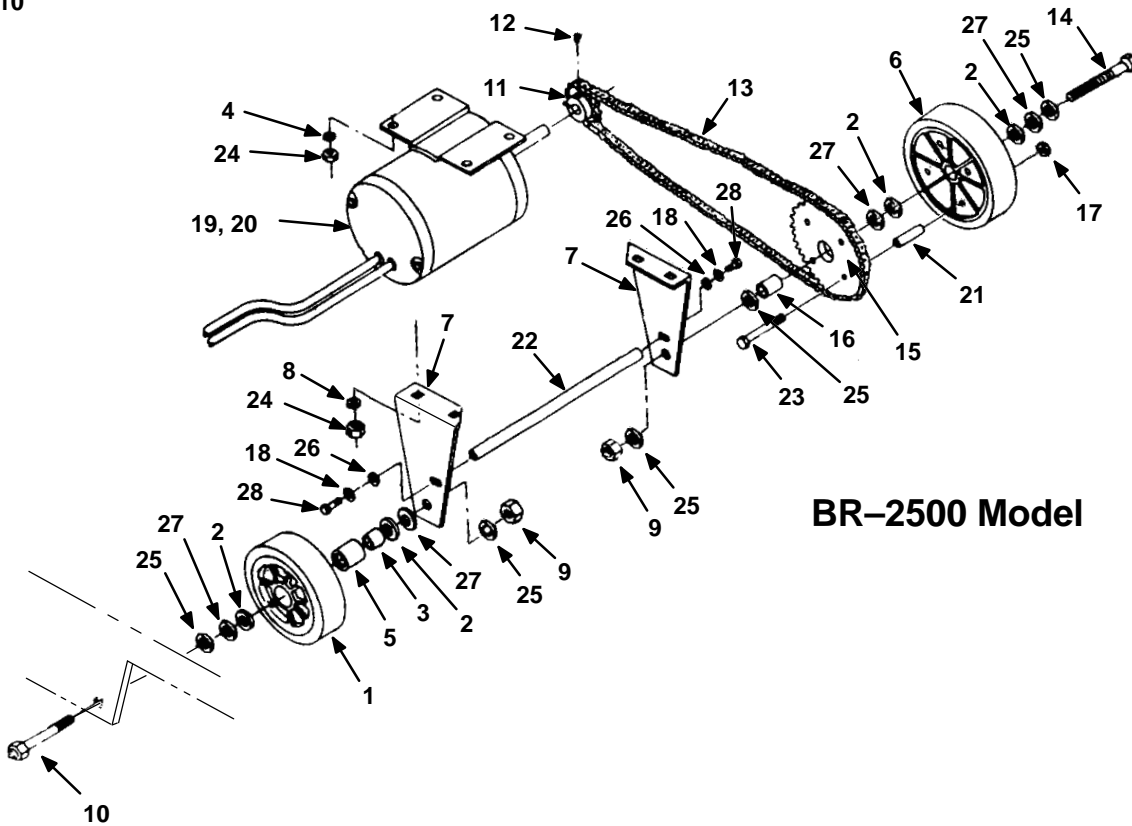
● RECOMMENDED STOCK ITEMS

| REF | PART # | DESCRIPTION | QTY. |
|-----|-----------|--------------------------------------|------|
| 26 | 069760082 | WASHER, 1/4 FLAT (BR-2500) | 2 |
| 27 | 140546 | NUT, 5/16-18 NYLK (BR-2250) | 4 |
| | 140546 | NUT, 5/16-18 NYLK (BR-2500) | 6 |
| 28 | 200607491 | SCREW, M8 X 1.25 X 25 HXHD (BR-2500) | 2 |
| 29 | 069762115 | SCREW, 1/4-20 X 1/2 HXHDCP | 2 |
| 30 | 140016 | WASHER, 1/4 LOCK | 2 |
| 31 | 579210 | WASHER, M6 FLAT | 2 |
| 32 | 200160017 | NUT, M8 LOCK (BR-2500) | 2 |
| 33 | 200303019 | WASHER, M8.4 FLAT (BR-2500) | 2 |
| 34 | 200031433 | SCREW, M6 X 1.0 X 12 HXHDCP | 4 |
| 35 | 140016 | WASHER, 1/4 LOCK | 7 |
| 36 | 140012 | WASHER, 3/16 FLAT | 7 |
| 37 | 140916 | CLAMP (BR-2500) | 1 |
| 38 | 140196 | SCREW, #10-24 X 1 TRSPHL (BR-2500) | 1 |
| 39 | 140552 | NUT, #10-24 LOCK (BR-2500) | 1 |
| 40 | 069764063 | RESISTOR, SLOW SPEED (BR-2500) | 1 |
| 41 | 15858.12 | SCREW, #10-24 X 3/4 FLTPHL (BR-2500) | 2 |
| 42 | 200315016 | WASHER, M5.3 FLAT (BR-2500) | 2 |
| 43 | 140519 | NUT, #10-24 KEP (BR-2500) | 2 |
| 44 | 621052000 | PLATE, BATTERY | 1 |
| 45 | 140027 | WASHER, 5/16 FLAT | 4 |
| 46 | 602202000 | DECAL, HOT CAUTION (BR-2500) | 1 |
| 47 | 019686055 | SPACER | 3 |
| 48 | 200609438 | SCREW, M6 X 20 HXHDCP | 3 |
| 49 | 579144 | WASHER, M10 FLAT | 4 |
| 50 | 140519 | NUT, #10-24 KEP (BR-2500) | 1 |
| 51 | 130280 | PLUG, DOME, 7/16 (BR-2250) | 1 |

DRIVE GROUP



BR-2250 Model



BR-2500 Model

DRIVE GROUP

| REF | PART # | DESCRIPTION | QTY. |
|-----|-----------|-----------------------------|------|
| ▽ 1 | 069767082 | ●WHEEL (BR-2250) | 2 |
| | 069767082 | ●WHEEL (BR-2500) | 1 |
| ▲ 2 | 602171000 | ●WASHER, THRUST | 4 |
| ▲ 3 | 069767004 | ●SPANNER, BUSHING (BR-2250) | 2 |
| | 069767004 | ●SPANNER, BUSHING (BR-2500) | 1 |
| 4 | 14880.5 | WASHER, 5/16 FLAT | 4 |
| ▲ 5 | 602013000 | ●BEARING, WHEEL (BR-2250) | 2 |
| | 602013000 | ●BEARING, WHEEL (BR-2500) | 1 |
| 6 | 069767003 | ●WHEEL (BR-2500) | 1 |
| 7 | 069767002 | BRACKET, WHEEL MOUNT | 2 |
| 8 | 069760082 | WASHER, 1/4 FLAT | 4 |
| ▲ 9 | 069767162 | NUT, 1/2-20 HEX | 2 |
| 10 | 621237000 | AXLE (BR-2250) | 2 |
| | 621237000 | AXLE (BR-2500) | 1 |
| 11 | 069767008 | SPROCKET | 1 |
| 12 | 602011000 | SCREW, SET | 2 |
| 13 | 069767011 | ●CHAIN | 1 |
| 14 | 621238000 | AXLE (BR-2500) | 1 |

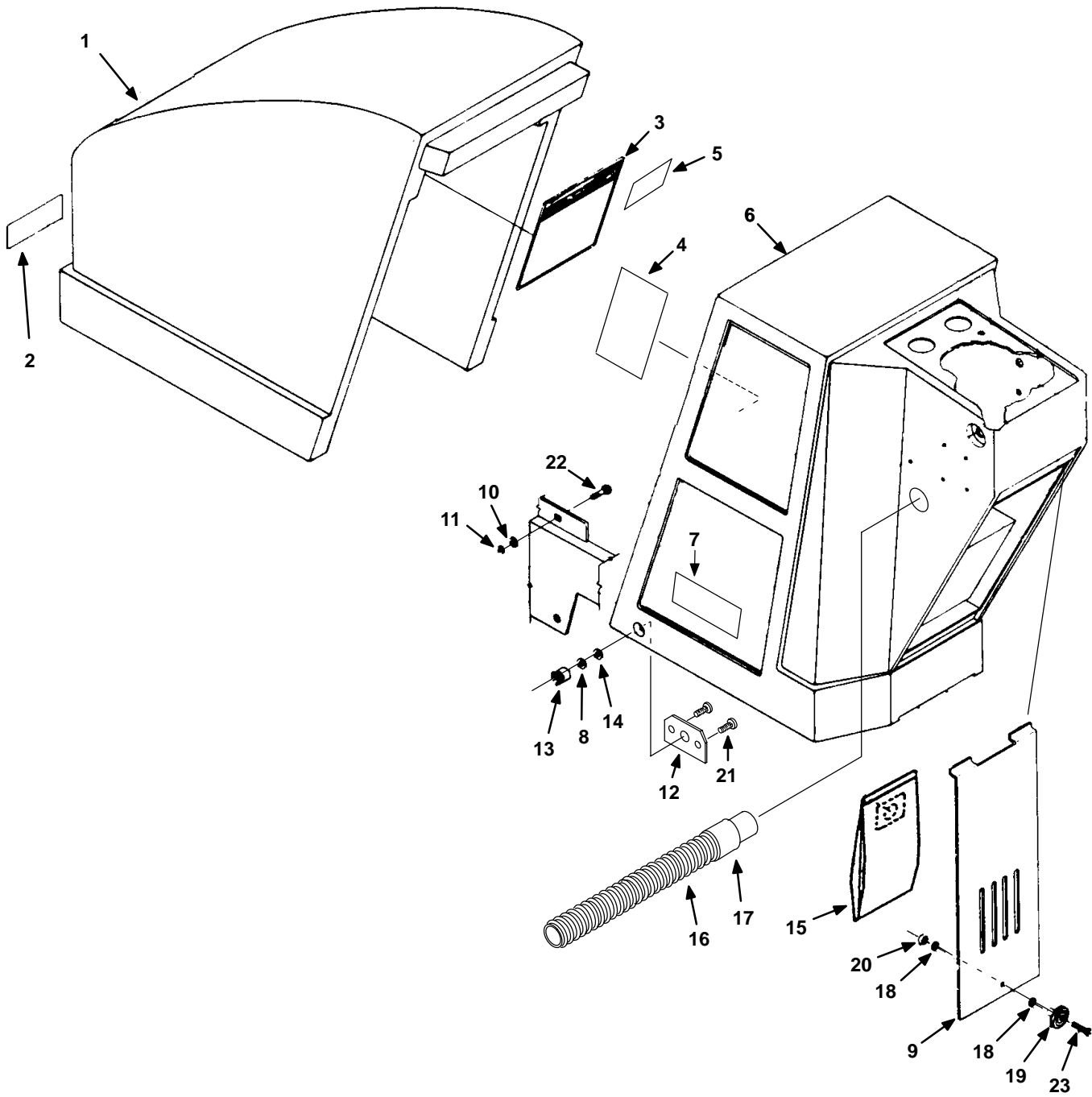
| REF | PART # | DESCRIPTION | QTY. |
|-----|-----------|---|------|
| 15 | 069767007 | SPROCKET | 1 |
| 16 | 069767005 | ●SPACER, WHEEL | 1 |
| 17 | 140501 | NUT, 1/4-20 NYLK | 4 |
| 18 | 140016 | WASHER, 1/4 LOCK | 2 |
| 19 | 069767010 | MOTOR, DRIVE | 1 |
| 20 | 602130000 | ●MOTOR BRUSH (SET/2) | 1 |
| 21 | 069767006 | ●SPACER, SPROCKET MNT. | 4 |
| 22 | 069767161 | SUPPORT, WHEEL MNT. | 1 |
| 23 | 140209 | SCREW, 1/4-20 X 2-1/2 HEX HD. | 4 |
| | 621311000 | SERVICE KIT, WHL SHIMS | 1 |
| 24 | 140546 | NUT, 5/16-18 NYLK (BR-2250) | 4 |
| | 140546 | NUT, 5/16-18 NYLK (BR-2500) | 8 |
| 25 | 069760091 | WASHER, .560 X 1.38 X .100 FLAT (BR-2250) | 4 |
| | 069760091 | WASHER, .560 X 1.38 X .100 FLAT (BR-2500) | 5 |
| 26 | 579210 | WASHER, M6 FLAT | 2 |
| 27 | 069762426 | WASHER, 3/4 X 1-1/4 X .02 FLAT | 4 |
| 28 | 200609438 | SCREW, M6 X 20 HXHDPC | 2 |

▽ ASSEMBLY

▲ INCLUDED IN ASSEMBLY

● RECOMMENDED STOCK ITEMS

COVER GROUP



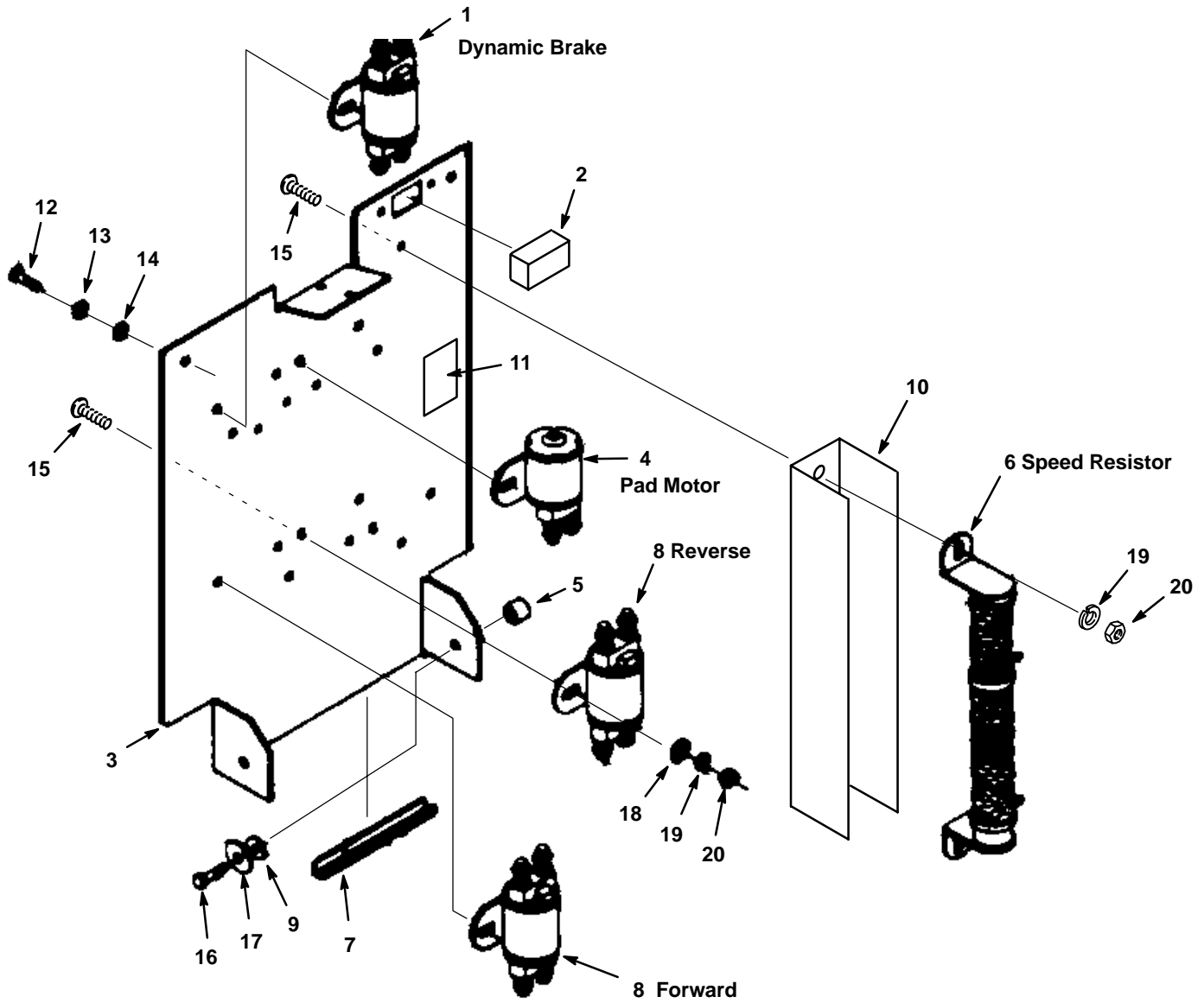
COVER GROUP

| REF | PART # | DESCRIPTION | QTY. |
|-----|-----------|----------------------------------|------|
| 1 | 608374 | HOOD, FRONT, GREEN | 1 |
| 2 | 608186 | DECAL, "NOBLES" | 1 |
| 3 | 069767135 | DECAL, MAINT. | 1 |
| 4 | 604957 | DECAL, BATTERY DIAGRAM (BR-2250) | 1 |
| | 069767119 | DECAL, WIRING (BR-2500) | 1 |
| 5 | 069780017 | DECAL, CAUTION CHARGE | 1 |
| 6 | 608372 | SHROUD, REAR, GREEN | 1 |
| 7 | 608377 | DECAL, "BR-2250" | 2 |
| | 608375 | DECAL, "BR-2500" | 2 |
| 8 | 200370019 | WASHER, M8 LOCK | 2 |
| 9 | 069767179 | DOOR, VAC. COMPART. | 1 |
| 10 | 14880.5 | WASHER, 5/16 FLAT | 2 |

● RECOMMENDED STOCK ITEMS

| REF | PART # | DESCRIPTION | QTY. |
|-----|-----------|--------------------------------|------|
| 11 | 140546 | NUT, 5/16-18 NYLK | 2 |
| 12 | 069767096 | STIFFENER, R. SHROUD | 2 |
| 13 | 602074000 | ●NUT, WING, SHROUD | 2 |
| 14 | 14880.5 | WASHER, 5/16 FLAT | 2 |
| 15 | 611786 | ●BAG, VACUUM, PAPER (10 PCS) | 1 |
| | 069767155 | ●BAG, VACUUM, CLOTH | 1 |
| 16 | 069767187 | ●HOSE, DUST CONTROL | 1 |
| 17 | 069767189 | ●CUFF, DUST CONTROL | 1 |
| 18 | 602139000 | WASHER, M6 FLAT, NYLON | 2 |
| 19 | 578439 | KNOB | 1 |
| 20 | 579028 | NUT, M6 HXLCK | 1 |
| 21 | 200058432 | SCREW, M6 X 1.0 X 10 FLAT HEAD | 4 |
| 22 | 621129000 | SCREW, 5/16-18 X 1.25 CARRIAGE | 2 |
| 23 | 200031441 | SCREW, M6 X 1.0 X 25 HXHDCP | 1 |

COMPONENT PANEL GROUP



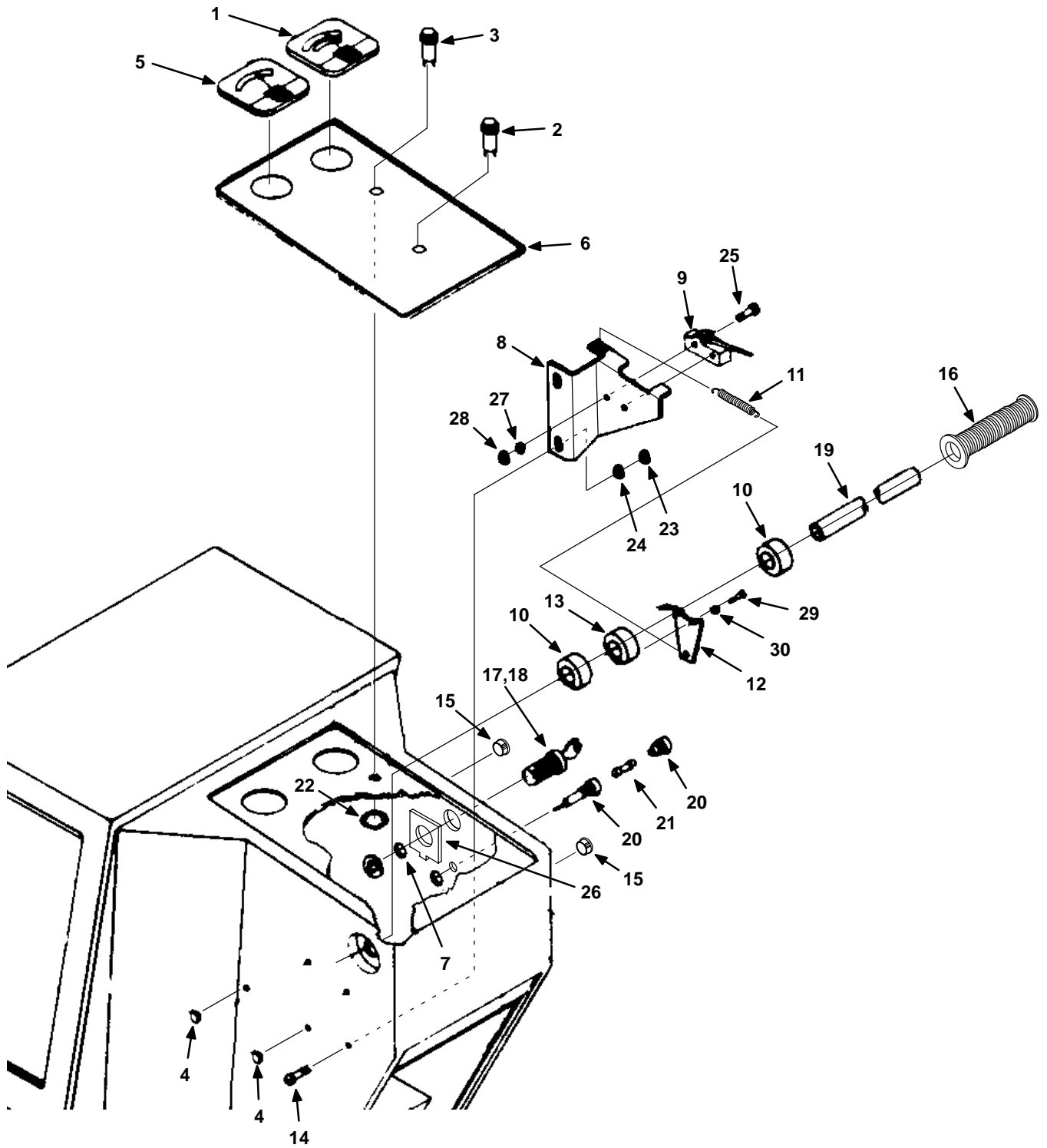
COMPONENT PANEL GROUP

| REF | PART # | DESCRIPTION | QTY. |
|-----|-----------|-------------------------------------|------|
| 1 | 069760440 | ●CONTACTOR, SPDT, 100A | 1 |
| 2 | 621297000 | KIT, HOURMETER, (OPTION) | 1 |
| 3 | 069767033 | PANEL, ELECTRICAL | 1 |
| 4 | 621381000 | ●CONTACTOR, 200A, PAD MOTOR | 1 |
| 5 | 019686055 | SPACER, NYLON | 2 |
| 6 | 069764063 | RESISTOR, SPEED (BR-2500) | 1 |
| 7 | 180014003 | EDGING, 8" | 1 |
| 8 | 069760440 | ●CONTACTOR, SPDT, 100A (BR-2500) | 2 |
| 9 | 630446 | WASHER, .318 NYLON | 2 |
| 10 | 602203000 | HEAT SHIELD (BR-2500) | 1 |
| 11 | 602202000 | DECAL, CAUTION HOT (BR-2500) | 1 |
| 12 | 200031433 | SCREW, M6 X 1.0 X 12 HXHDCP | 2 |

● RECOMMENDED STOCK ITEMS

| REF | PART # | DESCRIPTION | QTY. |
|-----|-----------|---|------|
| 13 | 578728 | WASHER, M6 LOCK | 2 |
| 14 | 579210 | WASHER, M6 FLAT | 2 |
| 15 | 069767164 | SCREW, 1/4-20 X 1/2 CARRIAGE (BR-2250) | 4 |
| | 069767164 | SCREW, 1/4-20 X 1/2 CARRIAGE (BR-2500) | 10 |
| 16 | 200609438 | SCREW, M6 X 20 HXHDCP | 2 |
| 17 | 579210 | WASHER, M6 FLAT | 2 |
| 18 | 200303019 | WASHER, M8.4 FLAT (BR-2250) | 4 |
| | 200303019 | WASHER, M8.4 FLAT (BR-2500) | 8 |
| 19 | 140016 | WASHER, 1/4 LOCK (BR-2250) | 4 |
| | 140016 | WASHER, 1/4 LOCK (BR-2500) | 10 |
| 20 | 14501 | NUT, 1/4-20 HEX (BR-2250) | 4 |
| | 14501 | NUT, 1/4-20 HEX (BR-2500) | 10 |

INSTRUMENT PANEL GROUP (BR-2250)



INSTRUMENT PANEL GROUP (BR-2250)

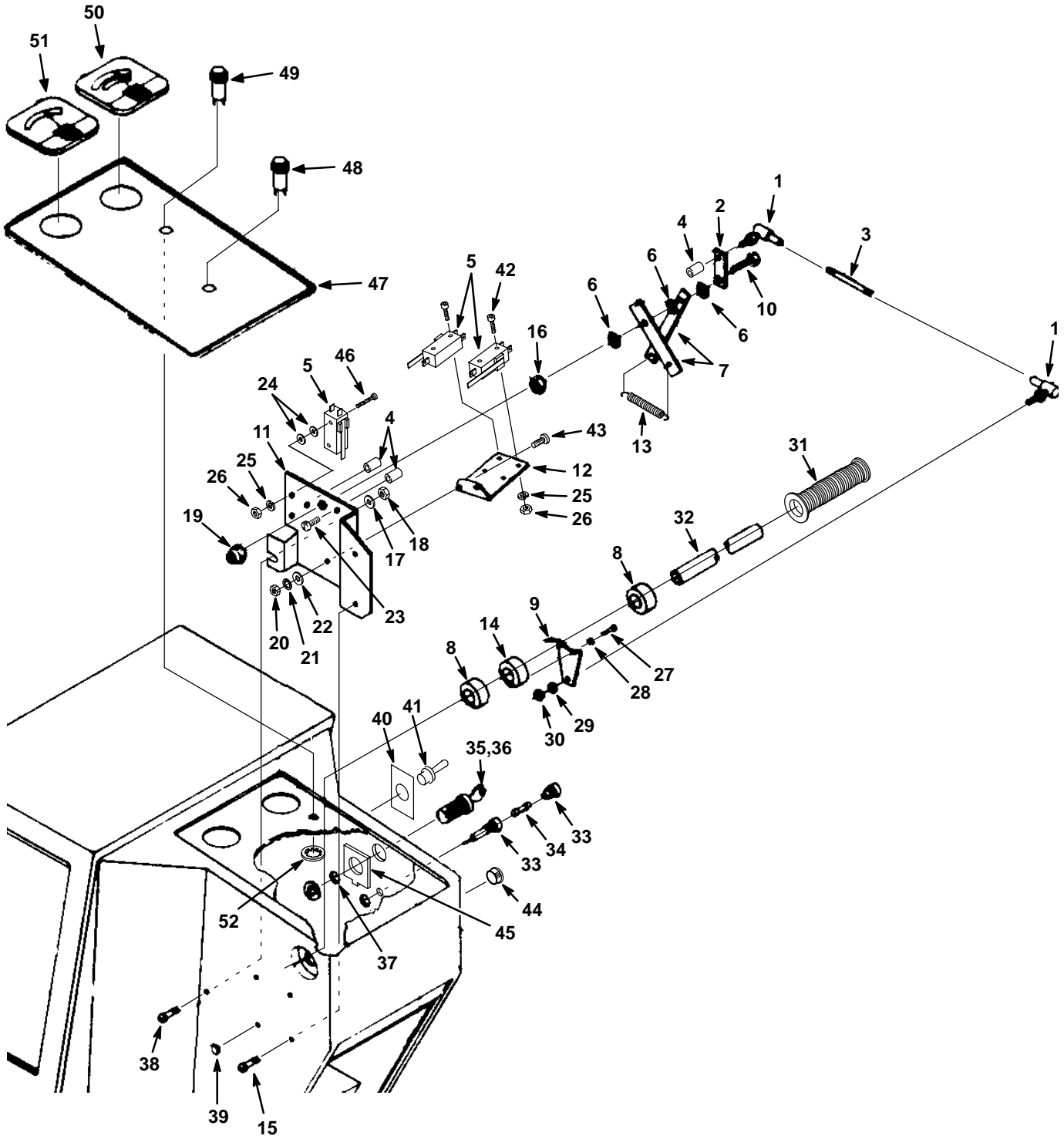
| REF | PART # | DESCRIPTION | QTY. |
|-----|-----------|--------------------------------|------|
| 1 | 602235 | METER, PAD PRESSURE | 1 |
| 2 | 611148000 | LIGHT, PILOT, AMBER | 1 |
| 3 | 626114 | LIGHT, PILOT, GREEN | 1 |
| 4 | 130164 | PLUG, DOME | 3 |
| 5 | 610026 | METER, BATTERY | 1 |
| 6 | 600345 | DECAL, CONSOLE | 1 |
| 7 | 069762306 | WASHER, LOCK | 1 |
| 8 | 069767055 | BRACKET, SWITCH | 1 |
| 9 | 069764009 | ●SWITCH, SNAP | 1 |
| 10 | 630186 | COLLAR, SHAFT | 2 |
| 11 | 069764069 | SPRING | 1 |
| 12 | 069767026 | PLATE | 1 |
| 13 | 069764005 | COLLAR, SWITCH ACTUATOR | 1 |
| 14 | 069764060 | SCREW, 5/16-18 X 3/4 TRUSS HD. | 2 |
| 15 | 069764626 | PLUG, DOME | 2 |

| REF | PART # | DESCRIPTION | QTY. |
|-----|-----------|----------------------------|------|
| 16 | 200823 | GRIP, HANDLE BAR | 2 |
| 17 | 607475 | SWITCH, KEY LOCK | 1 |
| 18 | 607821 | KEY, REPLACEMENT | 1 |
| 19 | 069764062 | BAR, HANDLE | 1 |
| 20 | 578418 | FUSE HOLDER | 1 |
| 21 | 069760639 | ●FUSE, 15A, 32V | 1 |
| 22 | 602140000 | WASHER, RETENTION | 2 |
| 23 | 140546 | NUT, 5/16-18 NYLK | 2 |
| 24 | 140015 | WASHER, 5/16 LOCK | 2 |
| 25 | 069764002 | SCREW, #6-32 X 1 HXHDCP | 2 |
| 26 | 621437000 | BRACKET, KEY SWITCH | 1 |
| 27 | 069764054 | WASHER, #6 LOCK | 2 |
| 28 | 140540 | NUT, #6-32 HEX | 2 |
| 29 | 069764190 | SCREW, M3 X .5 X 16 HXHDCP | 2 |
| 30 | 200351012 | WASHER, M3 LOCK | 2 |

● RECOMMENDED STOCK ITEMS

PARTS LIST

INSTRUMENT PANEL & SPEED CONTROL GROUP (BR-2500)



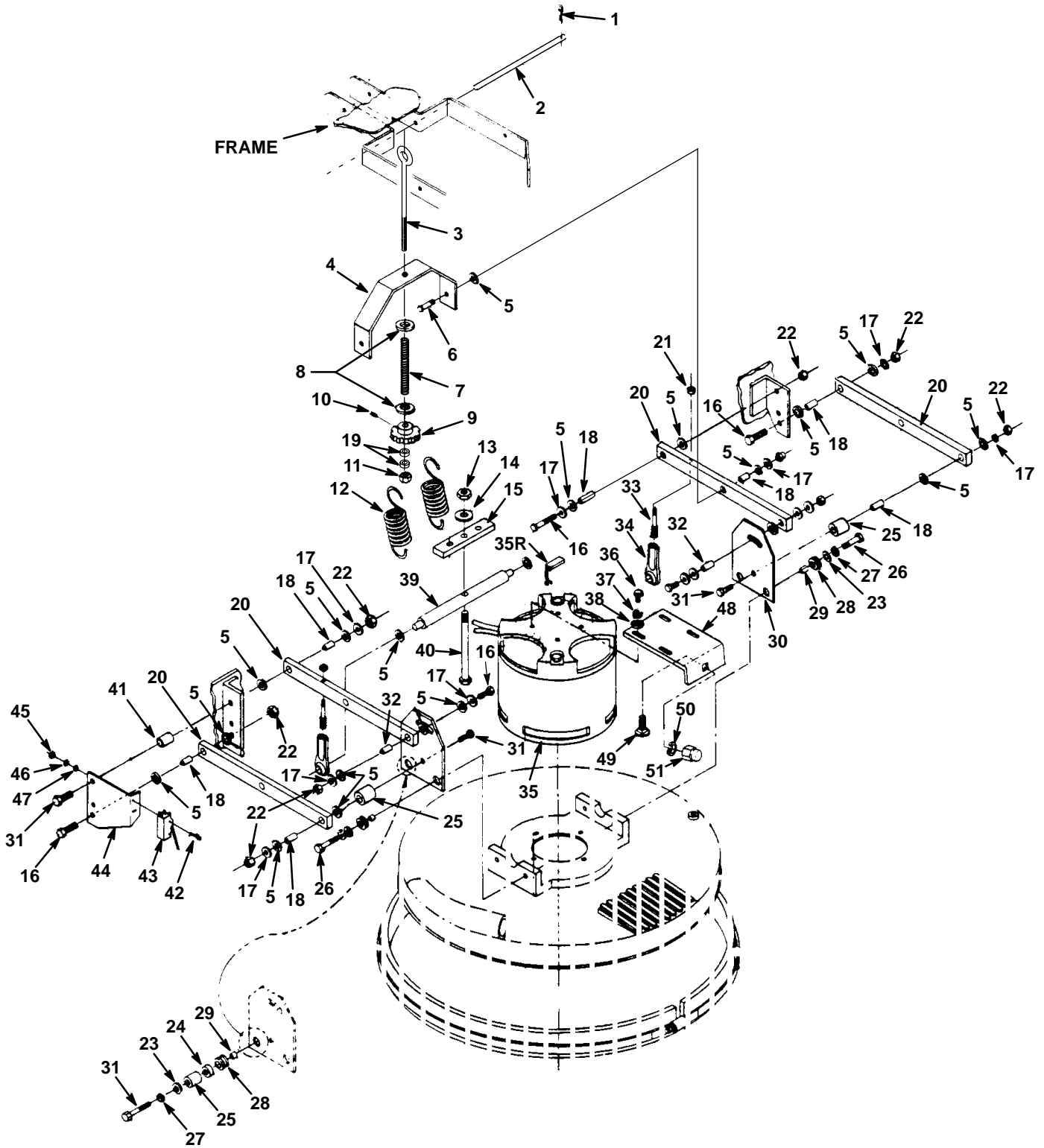
INSTRUMENT PANEL & SPEED CONTROL GROUP (BR-2500)

| REF | PART # | DESCRIPTION | QTY. |
|-----|-----------|--------------------------------|------|
| 1 | 069767070 | BALL JOINT | 2 |
| 2 | 621059000 | STRIP ARM | 1 |
| 3 | 069767058 | ROD, SPEED CTRL. | 1 |
| 4 | 621440000 | SPACER, NYLON | 3 |
| 5 | 069764009 | ●SWITCH, SNAP | 3 |
| 6 | 621439000 | WASHER, .32 NYLON | 3 |
| 7 | 069767066 | LINK, SCISSOR | 2 |
| 8 | 630186 | COLLAR, SHAFT | 2 |
| 9 | 069767026 | PLATE | 1 |
| 10 | 200032496 | SCREW, M8 X 1.25 X 35 HXHDCP | 1 |
| 11 | 621058000 | BRACKET, SPD./DIR. CTRL. | 1 |
| 12 | 069767057 | BRACKET, SWITCH | 1 |
| 13 | 069764069 | SPRING | 1 |
| 14 | 069764005 | COLLAR, SWITCH ACTUATOR | 1 |
| 15 | 069764060 | SCREW, 5/16-18 X 3/4 TRUSS HD. | 2 |
| 16 | 200160017 | NUT, M8 LOCK | 1 |
| 17 | 140015 | WASHER, 5/16 LOCK | 1 |
| 18 | 140546 | NUT, 5/16-18 NYLK | 1 |
| 19 | 200160017 | NUT, M8 LOCK | 1 |
| 20 | 200102014 | NUT, M4 HEX | 2 |
| 21 | 140023 | WASHER, #8 LOCK | 2 |
| 22 | 069760097 | WASHER, #8 FLAT | 2 |
| 23 | 186002085 | SCREW, #10-32 X 3/4 PAN SLOT | 2 |
| 24 | 140026 | WASHER, #6 FLAT | 4 |
| 25 | 069764054 | WASHER, #6 LOCK | 6 |
| 26 | 140540 | NUT, #6-32 HEX | 6 |

● RECOMMENDED STOCK ITEMS

| REF | PART # | DESCRIPTION | QTY. |
|-----|-----------|----------------------------------|------|
| 27 | 069764190 | SCREW, M3 X .5 X 16 HXHDCP | 2 |
| 28 | 200351012 | WASHER, M3 LOCK | 2 |
| 29 | 069762005 | WASHER, #10 FLAT | 1 |
| 30 | 575380 | NUT, #10-32 HEX | 1 |
| 31 | 200823 | GRIP, HANDLE | 2 |
| 32 | 069764062 | BAR, HANDLE | 1 |
| 33 | 578418 | HOLDER, FUSE | 1 |
| 34 | 069760639 | ●FUSE, 15A, 32V | 1 |
| 35 | 607475 | SWITCH, KEY LOCK | 1 |
| 36 | 607821 | KEY, REPLACEMENT | 1 |
| 37 | 069762306 | WASHER, M20 LOCK | 1 |
| 38 | 602234 | SCREW, 5/16-18 X 1 TRUSS HD. | 1 |
| 39 | 130164 | PLUG, BUTTON | 2 |
| 40 | 602212000 | DECAL, SPEED | 1 |
| 41 | 130728 | ●SWITCH, TOGGLE SPEED | 1 |
| 42 | 069764002 | SCREW, #6-32 X 1 HXHDCP | 4 |
| 43 | 579259 | SCREW, M4 X .7 X 12 PANPHL | 2 |
| 44 | 069764626 | PLUG | 1 |
| 45 | 621437000 | BRACKET, KEY SWITCH | 1 |
| 46 | 140830 | SCREW, #6-32 X 1-5/8 PANPHL | 2 |
| 47 | 600346 | DECAL, CONSOLE | 1 |
| 48 | 611148000 | LIGHT, PILOT, AMBER | 1 |
| 49 | 626114 | LIGHT, PILOT, GREEN | 1 |
| 50 | 602235 | METER, PAD PRESSURE | 1 |
| 51 | 610026 | METER, BATTERY | 1 |
| | 602970 | KIT, LOW VOLT INTERRUPT (OPTION) | 1 |
| 52 | 602140000 | WASHER, RETENTION | 2 |

PAD SHROUD LINKAGE GROUP



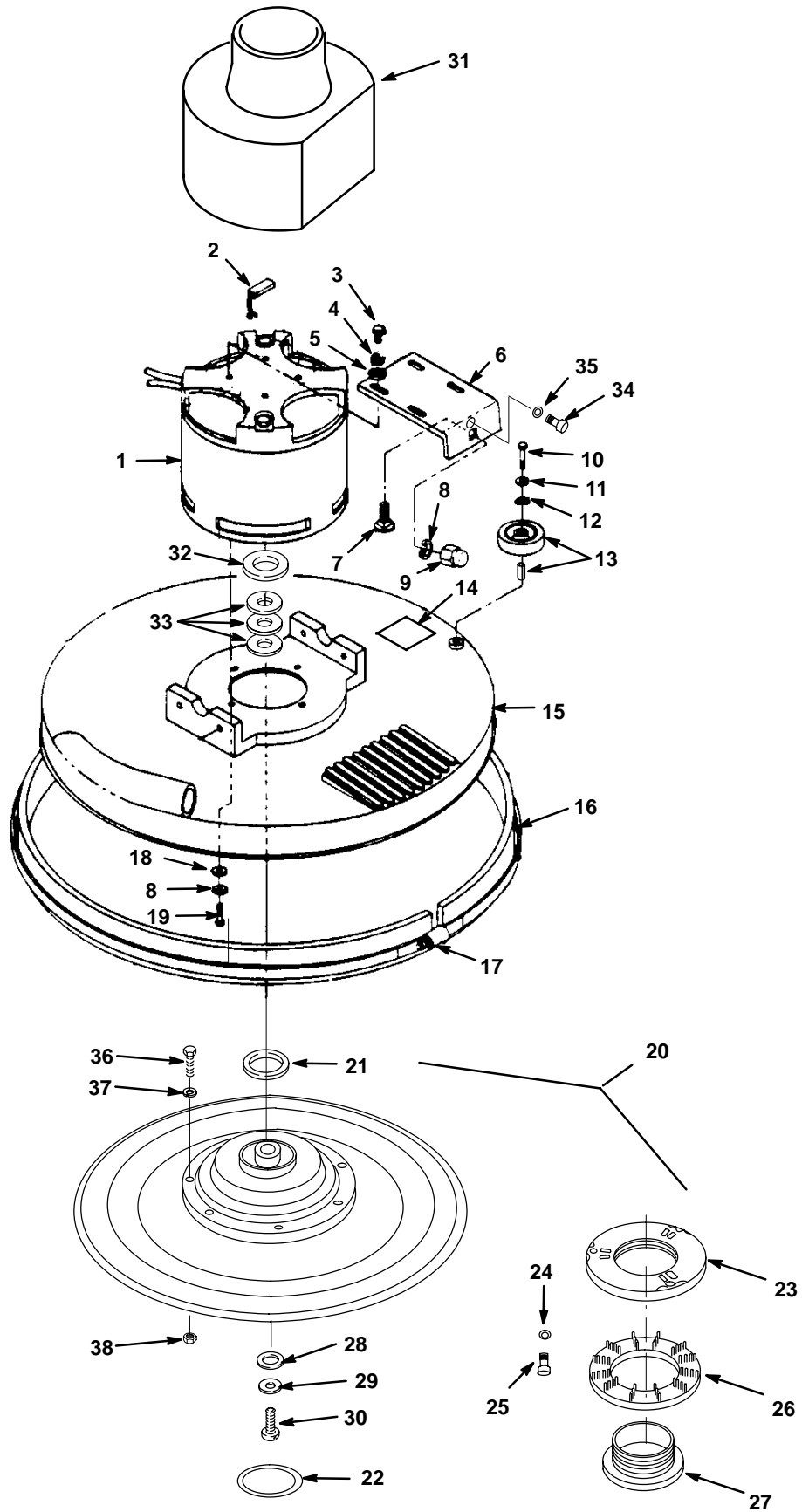
PAD SHROUD LINKAGE GROUP

| REF | PART # | DESCRIPTION | QTY. |
|-----|-----------|---------------------------------|------|
| 1 | 578421 | PIN, COTTER | 2 |
| 2 | 602009000 | PIN, HEADLESS | 1 |
| 3 | 602027000 | SCREW, 3/8-16 X 10 EYEBOLT | 1 |
| 4 | 621178000 | BRACKET, SPRING SUPP. | 1 |
| 5 | 630447 | WASHER, M12.7 NY | 22 |
| 6 | 200031494 | SCREW, M8 X 1.25 X 30 HEX | 2 |
| 7 | 621446 | SPRING, PRESSURE ADJ. | 1 |
| 8 | 579144 | WASHER, M10 FLAT | 2 |
| 9 | 602029000 | ●KNOB, ADJUSTING | 1 |
| 10 | 602046000 | SCREW, 10-24 X 3/8 SET, NYLON | 1 |
| 11 | 140515 | NUT, 3/8-16 NYLCK | 1 |
| 12 | 069767128 | SPRING, EXT. | 2 |
| 13 | 069767162 | NUT, 1/2-20 HEX | 1 |
| 14 | 069760091 | WASHER, .560 X 1.38 X .100 FLAT | 1 |
| 15 | 069767148 | PLATE, SPRING ADJ. | 1 |
| 16 | 200032496 | SCREW, M8 X 1.25 X 35 HXHDCP | 5 |
| 17 | 14880.5 | WASHER, 5/16 FLAT | 11 |
| 18 | 069760417 | SLEEVE, BEARING | 8 |
| 19 | 575524000 | WASHER, .39 X .62 X .26 NYLON | 2 |
| 20 | 069767012 | LINK, SUSPENSION | 4 |
| 21 | 579028 | NUT, M6 HXLCK | 2 |
| 22 | 200160017 | NUT, M8 LOCK | 10 |
| 23 | 14880.5 | WASHER, 5/16 FLAT | 4 |
| 24 | 069764631 | WASHER, M8.4 FLAT | 2 |
| 25 | 069767163 | SPACER, 1.0 X .75 | 4 |
| 26 | 200031494 | SCREW, M8 X 1.25 X 30 HEX | 2 |

| REF | PART # | DESCRIPTION | QTY. |
|-----|-----------|------------------------------|------|
| 27 | 140015 | WASHER, 5/16 LOCK | 4 |
| 28 | 602055000 | GROMMET | 4 |
| 29 | 602056000 | SPACER | 4 |
| 30 | 069767137 | BRACKET | 2 |
| 31 | 200031501 | SCREW, M8 X 1.25 X 50 HEX | 5 |
| 32 | 069767177 | SLEEVE, BEARING | 2 |
| 33 | 069767171 | MOUNTING, ROD END | 2 |
| 34 | 069767091 | ROD END | 2 |
| 35 | 621445 | MOTOR, 36 VDC, 3 HP | 1 |
| 35R | 621478 | ●BRUSHES, MOTOR | 4 |
| 36 | 200609438 | SCREW, M6 X 20 HXHDCP | 4 |
| 37 | 578728 | WASHER, M6 LOCK | 4 |
| 38 | 019680127 | WASHER, FLAT, WHEEL AXLE | 4 |
| 39 | 621177000 | CROSS ARM, HEAD LIFT | 1 |
| 40 | 069767158 | SCREW, 1/2-20 X 6 HXHDCP | 1 |
| 41 | 621207000 | SPACER | 1 |
| 42 | 069764002 | SCREW, #6-32 X 1 HXHDCP | 2 |
| 43 | 069764009 | SWITCH, SNAP, 25A | 1 |
| 44 | 069767056 | BRACKET, SWITCH | 1 |
| 45 | 140540 | NUT, #6-32 HEX | 2 |
| 46 | 069764054 | WASHER, #6 LOCK | 2 |
| 47 | 140026 | WASHER, #6 FLAT | 2 |
| 48 | 621186000 | BRACKET, HEAD STOP | 1 |
| 49 | 602079000 | SCREW, 3/8-16 X 5/8 CARRIAGE | 1 |
| 50 | 140017 | WASHER, 3/8 LOCK | 1 |
| 51 | 602080000 | NUT, 3/8-16 ACORN | 1 |

● RECOMMENDED STOCK ITEMS

PAD DRIVER GROUP



PAD DRIVER GROUP

| REF | PART # | DESCRIPTION | QTY. |
|-----|-----------|-------------------------------|------|
| 1 | 621445 | MOTOR, 36 VDC, 3 HP (120V) | 1 |
| 2 | 621478 | ●MOTOR BRUSH (SET/4) | 4 |
| 3 | 200609438 | SCREW, M6 X 20 HXHDCP | 4 |
| 4 | 578728 | WASHER, M6 LOCK | 4 |
| 5 | 019680127 | WASHER, FLAT, WHEEL AXLE | 4 |
| 6 | 621186000 | BRACKET, HEAD STOP | 1 |
| 7 | 602079000 | SCREW, 3/8-16 X 5/8 CARRIAGE | 1 |
| 8 | 140017 | WASHER, 3/8 LOCK | 5 |
| 9 | 602080000 | NUT, 3/8-16 ACORN | 1 |
| 10 | 603154 | SCREW, M8 X 1.25 X 40 PANPHL | 1 |
| 11 | 069760082 | WASHER, 1/4 FLAT | 1 |
| 12 | 602035000 | WASHER, M12 WAVE | 1 |
| 13 | 630450 | WHEEL, RUBBER | 1 |
| 14 | 578769 | DECAL, MOVING PARTS | 1 |
| 15 | 069767020 | HEAD, DRIVE BLOCK | 1 |
| 16 | 621474 | ●ASSEMBLY, SKIRT | 1 |
| 17 | 602044000 | ●FASTENER, ADJUSTING BAND | 1 |
| | 069767094 | KIT, BAND REPLACEMENT | 1 |
| | 630613 | SKID STRIP, 1.69M (NOT SHOWN) | 1 |
| 18 | 140013 | WASHER, 3/8 FLAT | 4 |

| REF | PART # | DESCRIPTION | QTY. |
|------|-----------|-------------------------------|------|
| 19 | 140201 | SCREW, 3/8-16 X .75 HEX HD | 4 |
| ▽ 20 | 621340000 | ASM., DRIVER, FLEXIBLE DISC | 1 |
| ▲ 21 | 069764512 | RING, WATER CONTAINMENT | 1 |
| ▲ 22 | 572061000 | O-RING, DRIVE BLOCK HUB | 1 |
| ▲ 23 | 621326000 | CENTERLOCK, STATIONARY | 1 |
| ▲ 24 | 069760097 | WASHER, #8 FLAT | 3 |
| ▲ 25 | 186002062 | SCREW, #8-32 X 3/8, SLOTTED | 3 |
| ▲ 26 | 572084000 | RING, PAD LOCK | 1 |
| ▲ 27 | 621327000 | CENTERLOCK, REMOVEABLE | 1 |
| 28 | 069764631 | WASHER, M8.4 FLAT | 1 |
| 29 | 41186 | WASHER, BELLEVILLE | 1 |
| 30 | 140203 | SCREW, 5/16-24 X 1-1/4 HXHDCP | 1 |
| 31 | 611753 | COVER, MOTOR | 1 |
| 32 | 231059 | WASHER, .786 X 1.5 X .3 | 1 |
| 33 | 621471 | SPACER, .75 X 1.12 | 3 |
| 34 | 200070432 | SCREW, STOP | 1 |
| 35 | 140016 | WASHER, 1/4 LOCK | 1 |
| ▲ 36 | 069762115 | SCREW, 1/4-20 X 1/2 HXHDCP | 8 |
| ▲ 37 | 140016 | WASHER, 1/4 LOCK | 8 |
| ▲ 38 | 572083000 | NUT, 1/4-20 WELD | 8 |

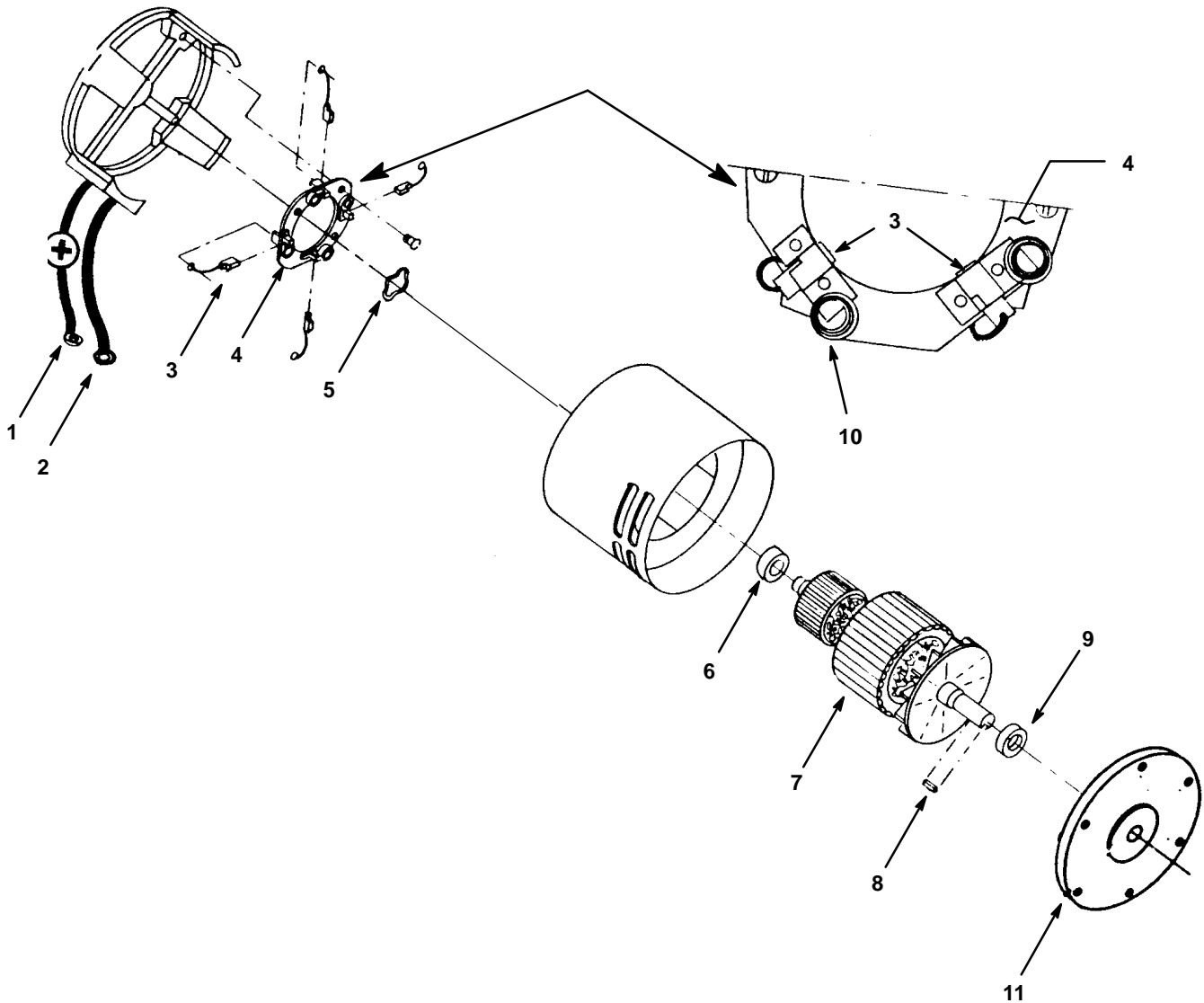
▽ ASSEMBLY

▲ INCLUDED IN ASSEMBLY

● RECOMMENDED STOCK ITEMS

PARTS LIST

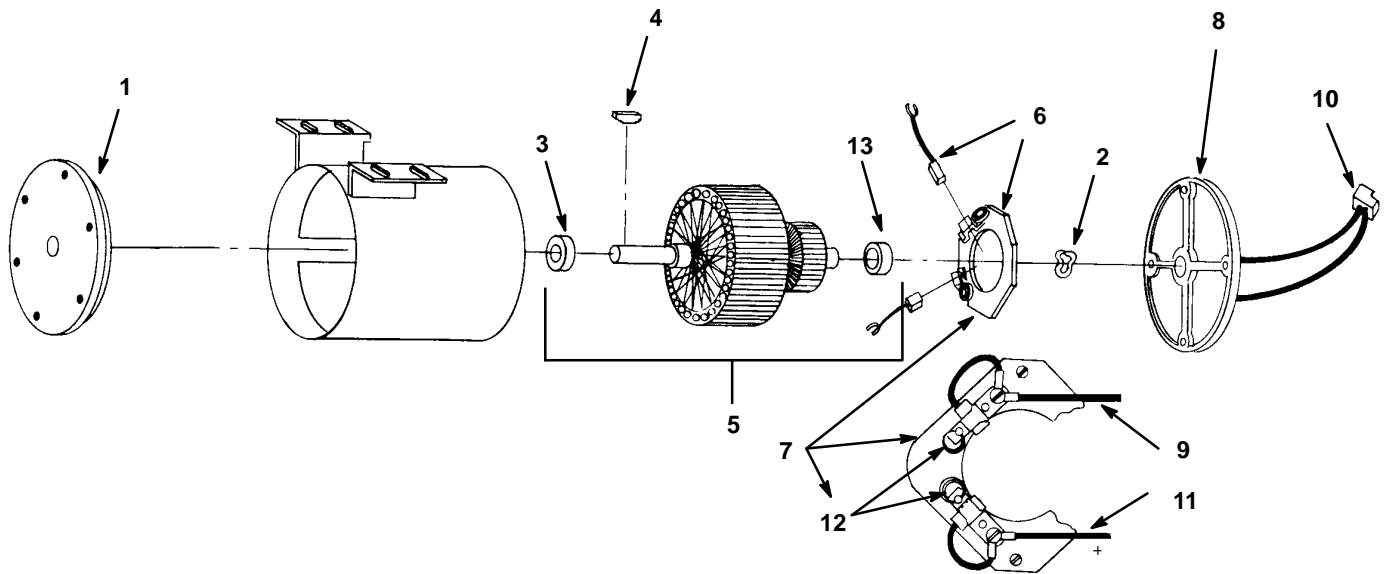
PAD MOTOR BREAKDOWN



| REF | PART # | DESCRIPTION | QTY. |
|-----|-----------|----------------------------|------|
| | 621445 | MOTOR, 36V, 3HP (COMPLETE) | 1 |
| 1 | 621362000 | ASM., LEAD (POSITIVE) | 1 |
| 2 | 621362000 | ASM., LEAD (NEGATIVE) | 1 |
| 3 | 621478 | ASM., BRUSH (SET OF 4) | 4 |
| 4 | 621300000 | ASM., BRUSH BOARD | 1 |
| 5 | 602087000 | WASHER, HELICAL | 1 |

| REF | PART # | DESCRIPTION | QTY. |
|-----|-----------|--------------------------|------|
| 6 | 602088000 | BEARING | 1 |
| 7 | 190313 | ASM., ARMATURE | 1 |
| 8 | 602010000 | KEY, SHAFT | 1 |
| 9 | 140124 | BEARING | 1 |
| 10 | 602131000 | SPRING, BRUSH (SET OF 4) | 4 |
| 11 | 603329 | BRACKET, B.E. | 1 |

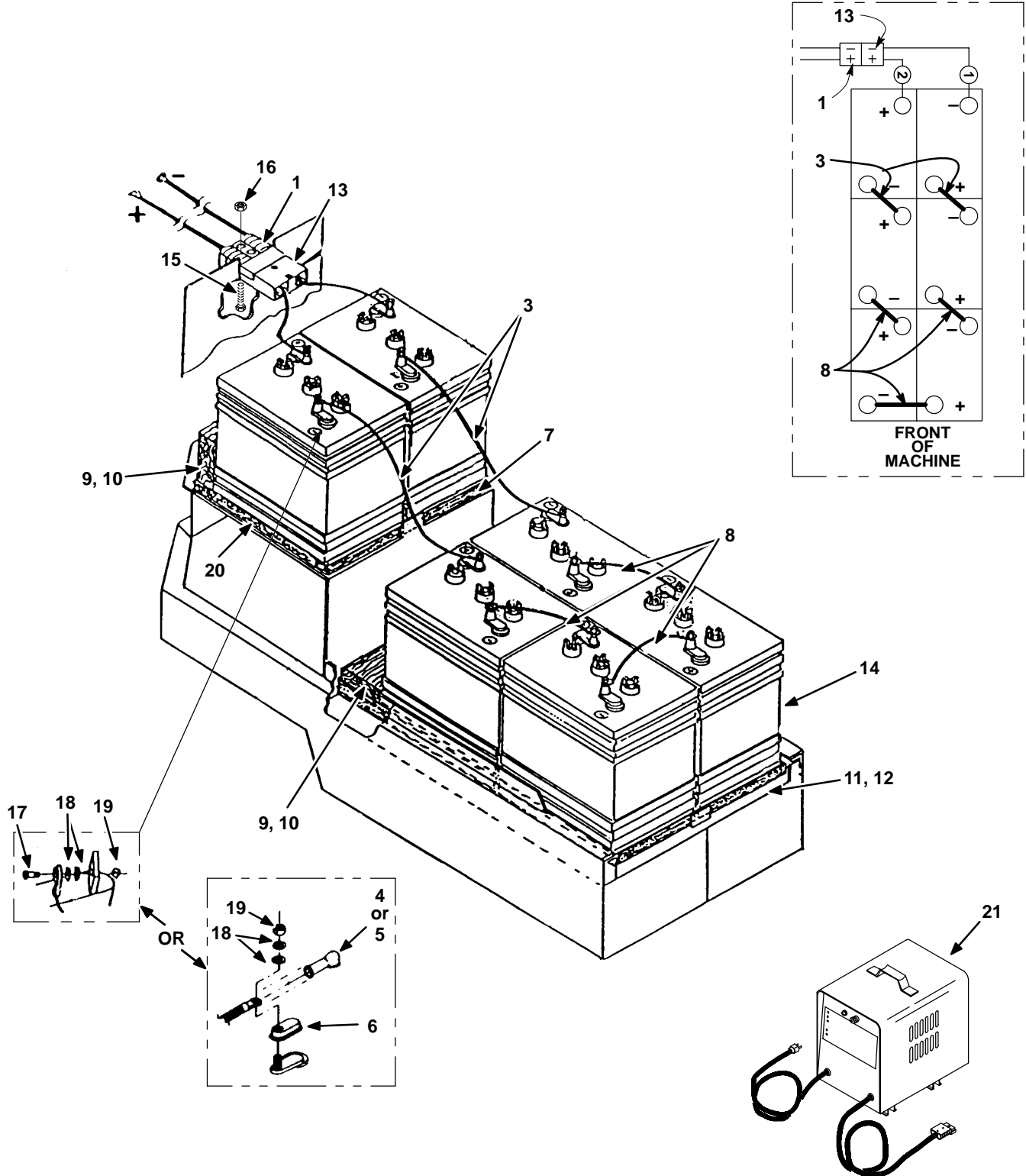
DRIVE MOTOR BREAKDOWN



| REF | PART # | DESCRIPTION | QTY. |
|-----|-----------|--------------------------|------|
| | 069767010 | MOTOR, .15 HP (COMPLETE) | 1 |
| 1 | 602086000 | BRACKET, B.E. | 1 |
| 2 | 602087000 | WASHER, HELICAL | 1 |
| 3 | 602088000 | BEARING | 1 |
| 4 | 069764176 | KEY, WOODRUFF | 1 |
| 5 | 602090000 | ARMATURE | 1 |
| 6 | 602130000 | ASM., BRUSH | 2 |

| REF | PART # | DESCRIPTION | QTY. |
|-----|-----------|--------------------------|------|
| 7 | 602091000 | ASM., BRUSH BOARD | 1 |
| 8 | 602092000 | BRACKET, COMMUTATOR | 1 |
| 9 | 602093000 | ASM., LEAD (NEGATIVE) | 1 |
| 10 | 630456 | CONNECTOR, HOUSING | 1 |
| 11 | 602095000 | ASM., LEAD, (POSITIVE) | 1 |
| 12 | 602131000 | SPRING, BRUSH (SET OF 2) | 2 |
| 13 | 602088000 | BEARING | 1 |

BATTERY GROUP



BATTERY GROUP

| REF | PART # | DESCRIPTION | QTY. |
|------|-----------|---------------------------|------|
| 1 | 069767101 | WIRE HARNESS, BATTERY | 1 |
| ∇ 2 | 469767951 | KIT, BATTERY CABLES | 1 |
| ▲ 3 | 611117000 | CABLE, BATTERY, 457MM | 2 |
| ▲ 4 | 611222 | BOOT, RED | 6 |
| ▲ 5 | 611221 | BOOT, BLACK | 6 |
| ▲ 6 | 45962 | COVER, TERMINAL | 12 |
| 7 | 069767088 | BATTERY TRAY, UPPER | 1 |
| ▲ 8 | 611116000 | CABLE, BATTERY, 305MM | 3 |
| 9 | 630375 | INSERT, BATTERY | 2 |
| 10 | 602032000 | INSERT, BATTERY (BR-2500) | 2 |
| 11 | 602146000 | PLATE, BATTERY SUPPORT | 1 |
| 12 | 069767089 | BATTERY TRAY, LOWER | 1 |
| ▲ 13 | 602015000 | BATTERY CABLE ASSY. | 1 |

∇ ASSEMBLY

▲ INCLUDED IN ASSEMBLY

| REF | PART # | DESCRIPTION | QTY. |
|------|-----------|---|------|
| 14 | 069764222 | BATTERY, 6V. 235 AMP (BR-2250) | 6 |
| | 606991 | BATTERY, 6V. 305 AMP (BR-2500) | 6 |
| | 602240 | BATTERY, 6V. 350 AMP (BR-2500) REQUIRES 602004, 36A CHARGER | 6 |
| 15 | 200031444 | SCREW, M6 X 1.0 X 30 HXHDCP | 2 |
| 16 | 579028 | NUT, M6 HXLCK | 2 |
| ▲ 17 | 140219 | SCREW, 5/16-18 X 1 HXHDCP | 12 |
| ▲ 18 | 140027 | WASHER, 5/16 FLAT | 24 |
| ▲ 19 | 140546 | NUT, 5/16-18 NYLK | 12 |
| 20 | 621052000 | PLATE, BATTERY | 1 |
| 21 | 469764962 | CHARGER, BATTERY, 36V/25A DC, 120V/15A AC (FOR 235 & 305 AMP BATTERIES) | 1 |
| | 602004 | CHARGER, BATTERY, 36V/36A DC, 120V/15A AC (FOR 305 & 350 AMP BATTERIES) | 1 |