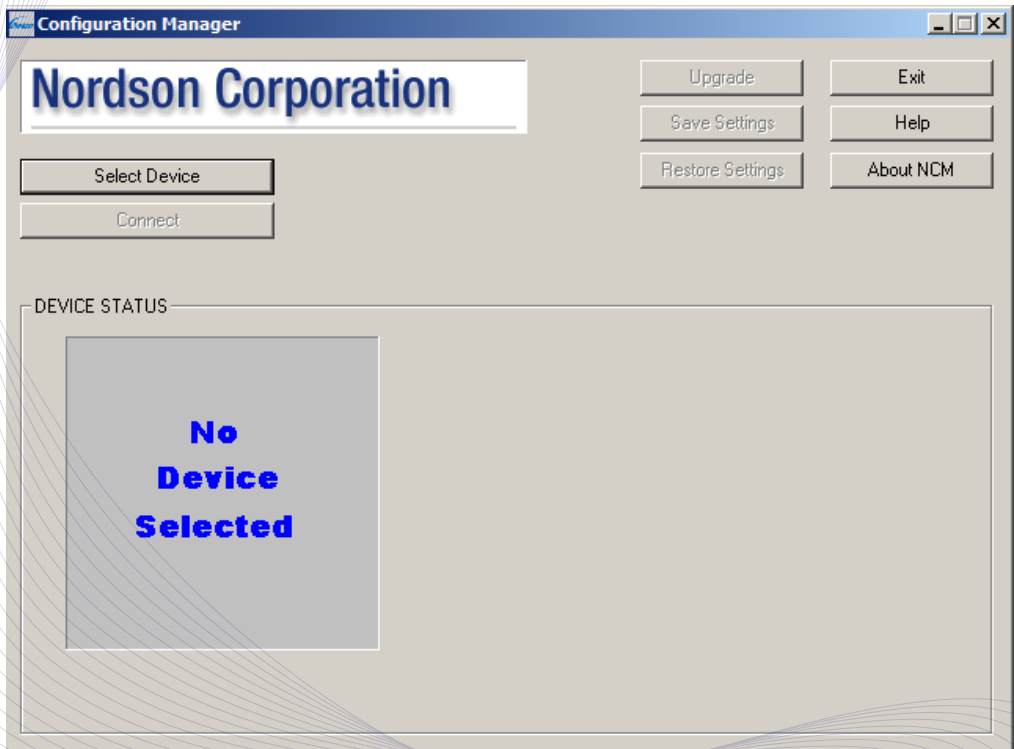


Nordson Configuration Manager

For ProBlue[®], ProBlue Fulfill[®], ProBlue Liberty[®] Melters

User's Guide

P/N 1124493_02



Nordson Corporation welcomes requests for information, comments, and inquiries about its products. General information about Nordson can be found on the Internet using the following address: <http://www.nordson.com>.

Address all correspondence to:

Nordson Corporation
Attn: Customer Service
11475 Lakefield Drive
Duluth, GA 30097

Notice

This is a Nordson Corporation publication which is protected by copyright. Original copyright date 2015. No part of this document may be photocopied, reproduced, or translated to another language without the prior written consent of Nordson Corporation. The information contained in this publication is subject to change without notice.

Trademarks

AccuJet, AeroCharge, Allegro, Apogee, Artiste, Asymtek, Automove, BaitGun, Blue Box, BM-32, BM-58, BM-63, BKG**, Bowtie, Build-A-Part, CanWorks, Century, CF, CleanSleeve, CleanSpray, Color-on-Demand, ColorMax, Connections to Life, Contour, Control Coat, Coolwave, Cross-Cut, CrystalCut, cScan+, Dage, Dispensejet, DispenseMate, DuraBlue, DuraDrum, DuraPail, e.dot e-stylized, Easymelt, Ecodry, Econo-Coat,, EFD, Eliminator, Emerald, Encore, Equatherm, Excel 2000, Fibrijet, Fluidmove, FoamMelt - stylized, FoamMix, Freedom, Fulfill, HDLV, Heli-flow, Horizon, iControl, iDry, iFlow, Isocore, Iso-Flo, iTrax, KISS, Lean Cell, LogiComm, March, Maverick, MEG, Meltex, MicroCoat, MicroMark, Micromedics, Micro-Meter, Microshot, Millennium, MiniBlue, Mini Squirt, NexJet, No-Drip, Nordson, Nordson - stylized, Nordson and Arc, OptiMix, Optimum, Package of Values, Paragon, PermaFlo, PICO, PicoDot, Plasmod, Poly-Check, Polymer Solution Casting, Porous Coat, PowderGrid, Precisecoat, PrintPlus, ProBlue, Prodigy, Pro-Flo, Program-A-Bead, Program-A-Shot, Program-A-Stream, Program-A-Swirl, Pro-Meter, Pulsar, Quantum, RBX, Rhino, Saturn, Saturn with Rings, Scoreguard, Sealant Equipment & Engineering, Inc, SEE and design, See-Flo, Select Charge, Select Coat, Select Cure, Servo-Flo, Shot-A-Matic, Signature - stylized, Slautterback, Smart-Coat, Smart-Gun, SolderPlus, Spectrum, Speed-Coat, StediFlo, Stratablend, SureBead, Sure Coat, TAH, Tip-Seal, TRAK, Tribomatic, Trilogy, TrueBlue, TrueCoat, Ultra, u-TAH, Value Plastics, Vantage, VersaBlue, Versa-Coat, VersaDrum, VersaPail, Versa-Spray, VP Quick-Fit, VP Quick-Fit stylized, VP stylized, When you expect more., X-Plane, Xaloy, Xaloy - stylized, and YesTech are registered trademarks of Nordson Corporation.

Accubar, Active Nozzle, Advanced Plasma Systems, AeroDeck, AeroWash, AltaBlue, AltaSlot, Alta Spray, ATS, Auto-Flo, AutoScan, Avex, Axiom, Best Choice, Blue Series, Bravura, CanPro, Champion, Check Mate, Classic IX, ClassicBlue, Clean Coat, Cobalt, Concert, Conexis, ContourCoat, Control Weave, Controlled Fiberization, CPX, cSelect, Cyclo-Kinetic, DispensLink, Dry Cure, DuraBraid, DuraCoat, DuraPUR, e.dot+, E-Nordson, Easy Clean, EasyOn, EasyPW, Eclipse, EcoBead**, EdgeControl, Equalizer, Equi Bead, FillEasy, Fill Sentry, FlexSeam, Flow Coat, FluxPlus, G-Net, G-Site, Genius, Get Green With Blue, IntelliJet, iON, Iso-Flex, iTrend, Lacquer Cure, Maxima, Measuring the Invisible, Mesa, MicroFin, MicroMax, Mikros, MiniEdge, Minimeter, MiniPUR, Multifill, MultiScan, Myritex, Nano, OmniScan, Optima, OptiStroke, Optix, Partnership+Plus, PatternJet, PCI, PharmaLok, Pinnacle, Powder Pilot, Powder Port, Powercure, ProBlue Liberty, Process Sentry, Pulse Spray, PURBlue, PUREOne, PURJet, Ready Coat, RediCoat, RolVIA, Royal Blue, Select Series, Sensomatic, Shaftshield, SheetAire, Smart, Smartfil, SolidBlue, Spectral, SpeedKing, Spray Works, StediTherm, StrokeControl, Summit, SureFoam, Sure Mix, SureSeal, Swirl Coat, Trade Plus, ThruWave, Trio, TruFlow, Turbo, Ultrasaver, Ultrasmart, Unity, UNITYMotion, Universal, Ultra FoamMix, UltraMax, ValueMate, Versa, VersaPUR, Vista, Web Cure, 2 Rings (design), 781Mini, and 787Mini are trademarks of Nordson Corporation.

Designations and trademarks stated in this document may be brands that, when used by third parties for their own purposes, could lead to violation of the owners' rights.

Windows is a registered trademark of Microsoft Corporation.

Table of Contents

Overview	1
Melters Supported	1
Program Download	1
System Requirements	1
NCM Dialog Box	2
Dialog Box Features	3
Installation	3
Download the NCM	3
Connect the Melter to a PC	6
Operation	7
Intended Use	7
Save Melter Settings	8
Saving Settings	8
Restore Settings	9
Upgrade Melter Firmware	10
Upgrading Firmware	10
CPU Replacement Board Kit Part Numbers	12

Overview

This user's guide describes how to install and use the Nordson Configuration Manager (NCM) communication utility for ProBlue® Adhesive Melters.

Melters Supported

The NCM utility currently supports the following melters:

- ProBlue® Adhesive Melters
- ProBlue® Fulfill® Melters
- ProBlue Liberty™ Melters

Program Download

The NCM program can be downloaded from
<http://emanuals.nordson.com/adhesives/software/BlueSeriesSoftware.html>

System Requirements

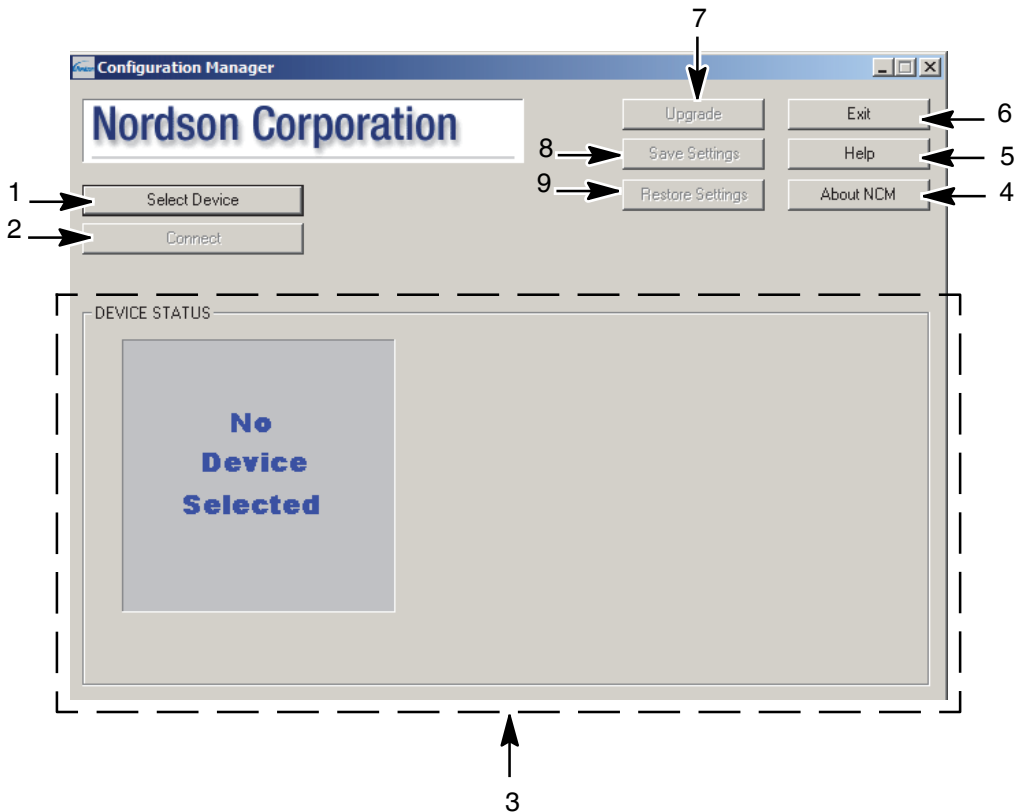
Make sure that the following tools are available:

- Serial cable or USB -to-serial adapter cable. If using a USB-to-serial adapter, Nordson recommends the following kit:
 USB TO SERIAL ADAPTER, DSUB TO USB, Part Number 1124858
- Personal Computer with:
 - Serial port or USB port
 - Windows XP, Windows 7, Windows 8

NCM Dialog Box



Nordson Configuration Manager (NCM) is launched from your Windows desktop using the icon shown to the left.



1. Select Device button
2. Connect button
3. Device Status area

4. About NCM
5. Help
6. Exit

7. Upgrade button
8. Save Settings
9. Restore Settings

Dialog Box Features

Item	Function
Select Device	Allows you to select a device from the given list.
Connect	Allows you to select a communication port (COM 1 - 20) to connect the device to the PC.
DEVICE STATUS	Indicates the communications status.
Exit	Closes the NCM.
Save Settings	Saves melter settings to PC.
Restore Settings	Restores melter settings from PC.
Upgrade	Upgrades or reloads the firmware.

Installation

When you download and install the NCM program, the latest version of the firmware is downloaded in your PC's hard drive.

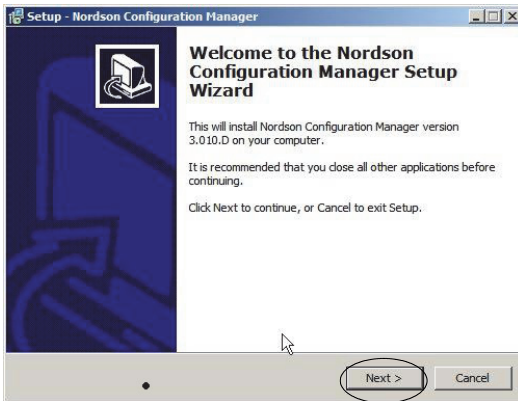
The following section describes how to download the NCM program, connect the melter to a PC, and operate the program.

Download the NCM

1. Go to <http://emanuals.nordson.com/adhesives/software/BlueSeriesSoftware.html>.
2. Click on **NCM_PBlue3010.zip** and download the install file.

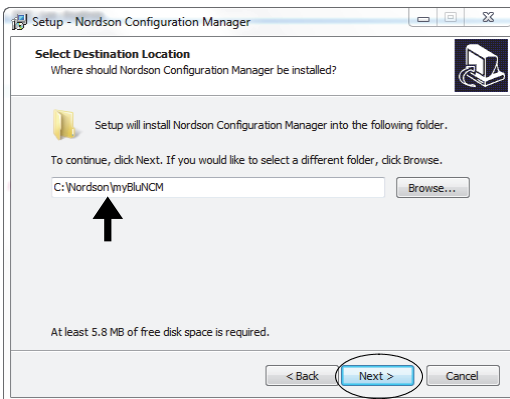
Download the NCM (contd)

3. Navigate to the downloaded file **NCM_PBlue3010.zip**.
4. Extract **NCM_PBlue3010.exe** and run it.
5. In the Install Wizard, accept all the default settings by pressing the Next button.

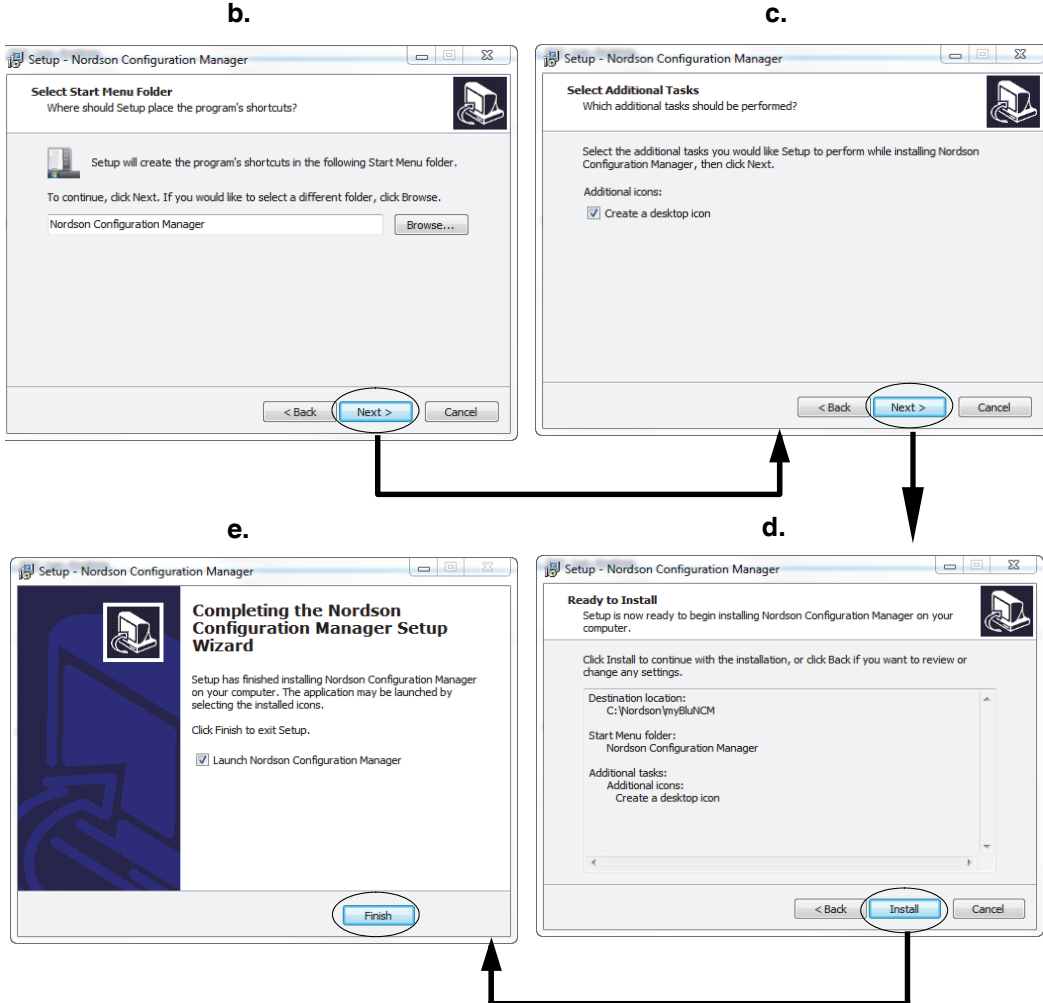


The screens will appear in the following sequence:

a.



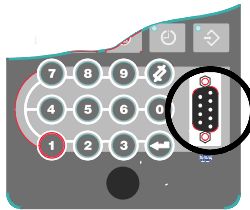
Note the folder location of NCM



6. Press the Install button (screen d) and then the Finish button (screen e) to complete installation.

Connect the Melter to a PC

1. Connect a serial cable between the PC COM port (selected during the program installation routine) and the serial port connection (COM port) on your melter's control panel (see following drawing).



ProBlue serial port

NOTE: If the PC does not have a serial port, a USB-to-serial port adaptor must be used. When installing the USB-to-serial port adaptor, follow the manufacturer's instructions. If given a choice as to which port to associate with the adaptor, select a serial port in the range of 1-20.

2. Make sure that the melter and the PC's monitor are turned on.
3. Locate the NCM folder in your PC hard drive.
4. Double-click the NCM icon to open the program.
The NCM dialog box appears.
5. Go to *Operation* given next.

Operation

The following section describes how to use the NCM functionalities. Refer to the *NCM Dialog Box* and *Dialog Box Features* for the location of the setup buttons.

Intended Use

Use the NCM utility to:

- Copy melter settings from one melter to another*
- Save melter setpoints, parameter settings, and Special Mode settings to the PC*
- Upgrade melter firmware

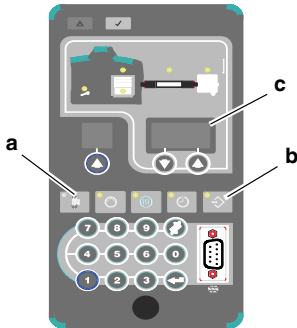
***NOTE:** Save/Restore Melter Settings is only available if the melter is presently running version 3.010 firmware or higher. The Save/Restore buttons are non-functional and grayed out for versions of firmware lower than 3.010.

Save Melter Settings

Saving melter settings copies all current set-point, operating parameter, and special mode settings in use at the melter to your PC. Saved settings can be transferred back to the same melter or to any other compatible Blue Series adhesive melter*.

***NOTE:** Save/Restore Melter Settings is only available if the melter is presently running version 3.010 firmware or higher. The Save/Restore buttons are non-functional and grayed out for versions of firmware lower than 3.010.

Saving Settings



Melter control panel

1. Place the melter into the configuration mode by simultaneously pressing the Standby (a) and Setup (b) keys.
CONf appears on the right display (c).
2. On the PC, navigate to the folder location for NCM and start the NCM program. For the folder location, refer to **a** in step 5 under *Download and Install NCM* (given earlier).
The NCM dialog box appears.
3. Click Select Device button on the NCM dialog box.
The Select Product dialog appears.
4. Select your melter from the list, and then click OK.
The Select COM Port dialog appears.

5. Select the COM port you are using to connect to the melter, and then click OK.
The PC and melter establish communications. The DEVICE STATUS area displays the picture of the selected melter and indicates **CONNECTED***.

***NOTE:** Save/Restore Melter Settings is only available if the melter is presently running version 3.010 firmware or higher. The Save/Restore buttons are non-functional and grayed out for versions of firmware lower than 3.010.

6. Click Save Settings button on the NCM dialog box.
The Save As dialog box appears.

7. Type a file name and directory location to identify the group of settings you are saving, and then click Save.

The Save Settings progress bar indicates the status of the save. When the save is complete, the melter automatically returns to the scan mode.

***NOTE:** If you are using the NCM to save multiple variations of melter settings, use a file naming convention that will allow you to easily associate each settings file (.nc2 extension) with its related process or end-use.

8. Click OK.

Restore Settings

1. Follow steps 1 through 5 of *Save Settings*.
2. Click Restore Settings. The Open dialog box appears.
3. Select the settings file (.nc2 extension) that you want to restore, and then click Open.

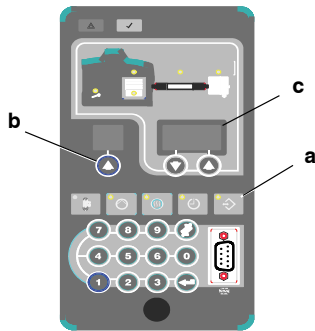
The Restore Settings progress bar indicates the status of the restore. When restore is complete, the melter automatically resets itself and restarts in scan mode with the new settings in use.

Upgrade Melter Firmware

Use the NCM utility to upgrade your melter to a newer version of firmware or reload the current version of the firmware.

During the upgrade process, all melter setpoints, parameter settings, and Special Mode settings are maintained and automatically reapplied once the upgrade process completes.

Upgrading Firmware



Melter control panel

1. Turn off the melter power.
2. Press and hold the Setup (a) and the left display Scroll (b) keys, and turn the melter back on. Hold the keys until **UPLOAD** appears in the right display (c).
3. Double-click the NCM icon.
The NCM dialog box appears.
4. Click Select Device.
The Select Product dialog appears.
5. Select your melter from the list, and then click OK.
The Select COM Port dialog appears.
6. Select the COM port you are using to connect to the melter (range of 1-20), and then click OK.
The PC and melter establish communications. The DEVICE STATUS area displays the picture of the selected melter and indicates **CONNECTED**.
7. Click Upgrade.
The Select Upgrade dialog appears.

8. In the *Available Upgrades* list, select the firmware version you want to upload to the melter, and then click OK.

The upgrade warning message appears.

9. Click OK.

CAUTION! Once the upgrade progress bar appears on the NCM dialog box, **do not** interrupt the upgrade process for any reason. Interrupting the upgrade can corrupt the melter's firmware and may require replacement of the CPU board, refer to *CPU Replacement Board Kit Part Numbers* given later.

The UPGRADE IN PROGRESS dialog appears. The upgrade can take as long as 6 minutes.

NOTE: If you are upgrading from a firmware version lower than 3.010 to 3.010 or higher, the melter control panel's display may change from **UP LOAd** to a back-and-forth animated sequence. The following figure is a screen shot of the back-and-forth animated sequence on the melter control panel's display:



The status of each step as it progresses is displayed on the NCM dialog box.

NOTE: You may notice slight pauses from time to time during the back and forth sequence. This is normal and to be expected as storage and upgrading is concurrently happening during this time.

Upgrading Firmware *(contd.)*

10. When the upgrade is complete, **SUCCESS** appears on the NCM dialog box and the melter restarts.

NOTE: Melter settings are automatically migrated during the firmware upgrade process. When the melter restarts, the migrated settings will be in use.

NOTE: In the unlikely event that the upgrade is not successful as indicated by the appearance of **SUCCESS** on the NCM dialog box, repeat the firmware upgrade procedure.

Any repeated attempts to perform the firmware upgrade procedure after a failed attempt may skip step 2 where **UPLOAD** appears on the melter control panel's display. If repeating the firmware upgrade procedure is not successful, replace the CPU board or verify your communication connection between the melter and the PC that is running NCM.

11. Click OK. The communications link between the melter and the PC is terminated.
12. Click Exit to terminate the NCM application.

CPU Replacement Board Kit Part Numbers

Refer to this table for the CPU replacement board part numbers.

Part Number	Description
1123450	SERVICE KIT, CPU, LIBERTY
1101718	KIT, SERVICE, FULFILL, CPU
1028325	KIT, SERVICE, CPU BOARD



Issued 02/2016

Nordson and the Nordson logo are registered trademarks of Nordson Corporation.

NORDSON CORPORATION • DULUTH, GEORGIA • USA
www.nordson.com