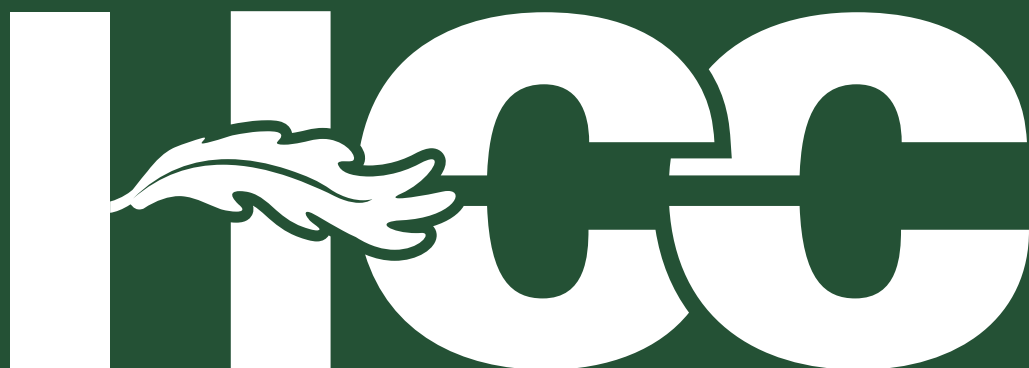


NORTH CAROLINA  
CAREER  
& COLLEGE  
PROMISE  
2020-2021 CATALOG



HAYWOOD COMMUNITY COLLEGE

# NORTH CAROLINA CAREER & COLLEGE PROMISE

2020-2021 CATALOG

## YOU ARE HERE

### COLLEGE TRANSFER PATHWAYS

ASSOCIATE  
IN **ARTS** pg 3

ASSOCIATE  
IN **SCIENCE** pg 4

ASSOCIATE  
DEGREE  
**NURSING** pg 5

ASSOCIATE  
IN **ENGINEERING** pg 6

### ENROLLMENT SUCCESS

#### 2018-2019 CCP Data:

Average GPA= 3.236

% of courses passed= 93.8% total

% of courses passed –traditional 96.1%

% of courses passed Web assisted- 95.8%

% of courses passed Online- 88%

### HAVE QUESTIONS?

High School Programs Coordinator

Jessica Honeycutt- [jhoneycutt@haywood.edu](mailto:jhoneycutt@haywood.edu) | 828.565.4119

### CAREER TECHNICAL EDUCATION PATHWAYS

ACCOUNTING & FINANCE pg 8

AUTOMOTIVE  
SYSTEMS TECHNOLOGY pg 8

BUSINESS ADMINISTRATION pg 8

COLLISION REPAIR AND  
REFINISHING TECHNOLOGY pg 8

COMPUTER INTEGRATED  
MACHINING pg 8

CRIMINAL JUSTICE  
TECHNOLOGY pg 9

EARLY CHILDHOOD  
PRESCHOOL pg 9

ELECTRICAL SYSTEMS  
TECHNOLOGY pg 9

ELECTRONICS ENGINEERING  
TECHNOLOGY pg 9

FOREST MANAGEMENT  
TECHNOLOGY pg 10

INFORMATION TECHNOLOGY pg 10

MEDICAL OFFICE  
ADMINISTRATION pg 10

WELDING TECHNOLOGY pg 10

The Career and College Promise program allows eligible high school students to earn college credit, tuition-free. Students who meet academic eligibility requirements are able to enroll in college classes through career technical education or college transfer pathways. Courses in these dual credit programs are taught on the high school campuses, at Haywood Community College (HCC), and online. Career and College Promise students have the opportunity to meet two graduation requirements, both in high school and college, simultaneously, allowing them to save time and money.

## COLLEGE TRANSFER PATHWAYS

The College Transfer Pathways are designed for high school juniors and seniors who wish to take courses toward a college transfer degree and/or a baccalaureate degree. It also gives students the opportunity to experience the rigor and independence of college life.

Students who remain enrolled at Haywood Community College to earn an associate degree receive the benefits of low-cost tuition, small class sizes with dedicated faculty, and excellent student support services.

Upon completion of a College Transfer Pathway, the student may complete his/her college transfer degrees at Haywood Community College. Or, the student may apply for admission and receive credit for general education courses at all North Carolina public universities or a participating independent college or university.

## ELIGIBILITY REQUIREMENTS

A high school student must meet the following criteria:

- Be a high school junior or senior;
- Have a unweighted GPA of 2.8 (“B”) on high school courses; or
- Demonstrate college readiness on an assessment or placement test (see below).

Maintaining eligibility:

- Continue to make progress toward high school graduation, and
- Maintain a 2.0 GPA in college coursework after completing two courses.

c. A student who falls below a 2.0 GPA after completing two college courses will be subject to the college’s policy for satisfactory academic progress.

Students may enroll in one college transfer pathway and may only enroll in courses that are part of that pathway. Students in a college transfer pathway may also enroll in one Career and College Promise Career Technical Pathway.

\*\*Qualifying Freshmen and Sophomores may take courses in the College Transfer Pathway starting Summer 2020. Please contact HS Programs Coordinator for Eligibility Requirements.

### College Readiness Approved Benchmarks on Approved Assessments

Test	PSAT and PSAT/NMSQT (2015 and Future)	SAT (March 2016 and Future)	Pre-ACT and ACT	NC DAP (NCCCS CUT SCORE)	RISE Placement Test
English	26 or a composite score of 460 for Evidenced-Based Reading and Writing	480 composite score for Evidenced-Based Reading and Writing	18	Composite score of 151 or higher	75 or higher on Tier 1 & Tier 2 (See RISE Placement Guide)
Reading	26 or a composite score of 460 for Evidenced-Based Reading and Writing		22		
Mathematics	24.5 or 510	530	22	7 on each assessment for DMA 010 thru 060	75 or higher on Tier 1 & Tier 2 & Tier 3 (See RISE Placement Guide)

**IMPORTANT INFORMATION FOR ALL PROGRAMS:**

- CCP course grades and credit will become part of student's college transcript.
- CCP students pay no tuition, but they are responsible for required course texts and materials.
- CCP students are responsible for providing their own transportation to HCC.
- CCP students are HCC students and must follow all HCC student policies.

## Career & College Promise College Transfer Pathway Leading to the Associate in Arts (P1012C)

The CCP College Transfer Pathway Leading to the Associate in Arts is designed for high school juniors and seniors who wish to begin study toward the Associate in Arts degree and a baccalaureate degree in a non-STEM major. The general education requirement includes study in courses selected from the Universal General Education Transfer Component (UGETC) of the Comprehensive Articulation Agreement.

### English Composition: 6 semester hours | Credit Hours

ENG 111	Writing & Inquiry	3
*ENG 112	Writing and Research in the disciplines	3

### Math: 3-4 semester hours

MAT 143	Quantitative Literacy	3
MAT 152	Statistical Methods I	4
MAT 171	Precalculus Algebra	4

### Humanities/Fine Arts/Communication: 9 semester hours from at least two different disciplines

ART 111	Art Appreciation	3
ART 114	Art History Survey I	3
ART 115	Art History Survey II	3
COM 120	Intro to Interpersonal Comm	3
	OR	
COM 231	Public Speaking	3
*ENG 231	American Literature I	3
*ENG 232	American Literature II	3
*ENG 241	British Literature I	3
*ENG 242	British Literature II	3
MUS 110	Music Appreciation	3
MUS 112	Introduction to Jazz	3
*PHI 215	Philosophical Issues	3
*PHI 240	Introduction to Ethics	3

### Natural Sciences: 4 semester hours

BIO 111	General Biology I	4
CHM 151	General Chemistry I	4
GEL 111	Geology	4
PHY 110	Conceptual Physics	3
	and	
PHY 110A	Conceptual Physics Lab	1

### Academic Transition: 1 semester hour

ACA 122	College Transfer Success	1
---------	--------------------------	---

**Total Semester Hours Credit in Pathway: 32-41**

### Social/Behavioral Sciences: 9 semester hours from at least two different disciplines

ECO 251	Principles of Microeconomics	3
ECO 252	Principles of Macroeconomics	3
HIS 111	World Civilizations I	3
HIS 112	World Civilizations II	3
HIS 131	American History I	3
HIS 132	American History II	3
POL 120	American Government	3
PSY 150	General Psychology	3
SOC 210	Introduction to Sociology	3

### Foreign Language: 6 semester hours (Optional)

SPA 111	Elementary Spanish I	3
*SPA 112	Elementary Spanish II	3

High school students in the CCP College Transfer Pathway Leading to the Associate in Arts must complete the entire pathway before taking additional courses in the Associate in Arts degree, with the exception of mathematics courses beyond MAT 171 in the Associate in Arts.



## Career & College Promise College Transfer Pathway Leading to the Associate in Science (P1042C)

The CCP College Transfer Pathway Leading to the Associate in Science is designed for high school juniors and seniors who wish to begin study toward the Associate in Science degree and a baccalaureate degree in a STEM or technical major. The general education requirement includes study in courses selected from the Universal General Education Transfer Component (UGETC) of the Comprehensive Articulation Agreement.

### English Composition: 6 semester hours | Credit Hours

ENG 111	Writing & Inquiry	3
*ENG 112	Writing and Research in the disciplines	3

### Math: 8 semester hours

MAT 171	Precalculus Algebra	4
*MAT 172	Precalculus Trigonometry	4
*MAT 271	Calculus I	4
*MAT 272	Calculus II	4

### Humanities/Fine Arts/Communication: 6 semester hours from at least two different disciplines

ART 111	Art Appreciation	3
ART 114	Art History Survey I	3
ART 115	Art History Survey II	3
COM 120	Intro to Interpersonal Comm	3
COM 231	Public Speaking	3
*ENG 231	American Literature I	3
*ENG 232	American Literature II	3
*ENG 241	British Literature I	3
*ENG 242	British Literature II	3
MUS 110	Music Appreciation	3
MUS 112	Introduction to Jazz	3
*PHI 215	Philosophical Issues	3
*PHI 240	Introduction to Ethics	3

### Natural Sciences: 8 semester hours

#### (select one sequence)

BIO 111	General Biology I	4
*BIO 112	General Biology II	4
	OR	
CHM 151	General Chemistry I	4
*CHM 152	General Chemistry II	4
	OR	
PHY 151	College Physics I	4
*PHY 152	College Physics II	4
	OR	
*PHY 251	General Physics I	4
*PHY 252	General Physics II	4

### Social/Behavioral Sciences: 6 semester hours from at least two different disciplines

ECO 251	Principles of Microeconomics	3
ECO 252	Principles of Macroeconomics	3
HIS 111	World Civilizations I	3
HIS 112	World Civilizations II	3
HIS 131	American History I	3
HIS 132	American History II	3
POL 120	American Government	3
PSY 150	General Psychology	3
SOC 210	Introduction to Sociology	3

### Academic Transition: 1 semester hour

ACA 122	College Transfer Success	1
---------	--------------------------	---

Total Semester Hours Credit in Pathway: 35-43

### Foreign Language: 6 semester hours (Optional)

SPA 111	Elementary Spanish I	3
*SPA 112	Elementary Spanish II	3

High school students in the CCP College Transfer Pathway Leading to the Associate in Science must complete the entire pathway before taking additional courses in the Associate in Science degree, with the exception of mathematics courses beyond MAT 271.

\* = indicates courses with pre-requisite

## Career & College Promise Associate Degree Nursing (ADN) Pathway (P1032C)

The Career and College Promise (CCP) ADN Pathway is designed for high school juniors and seniors who wish to begin their educational studies toward the Associate in Nursing degree and a Baccalaureate degree in Nursing. The Pathway is based on Block 1 of the Uniform Articulation Agreement between the University of North Carolina's Registered Nurse to Bachelor of Science in Nursing programs and the North Carolina Community College Associate Degree Nursing Programs which was approved by the State Board of Community Colleges and the UNC Board of Governors in February 2015.

### Social/Behavioral Sciences: 6 semester hours (required)

PSY 150	General Psychology	3
*PSY 241	Developmental Psychology	3

### Natural Sciences: 8 semester hours

BIO 168	Anatomy and Physiology I	4
*BIO 169	Anatomy and Physiology II	4

### Academic Transition: 1 semester hour (required)

ACA 122	College Transfer Success	1
---------	--------------------------	---

Total Semester Hours Credit in Pathway: 24

### GENERAL EDUCATION: (23 semester hours)

These courses are contained in Block 1 of the Five Block Degree Plan located within the RN to BSN Articulation Agreement.

High school students in the CCP Associate Degree Nursing Pathway to the Associate in General Education Nursing (A1030N) program must complete the entire pathway before taking additional courses in the Associate in General Education Nursing (A1030N) program.

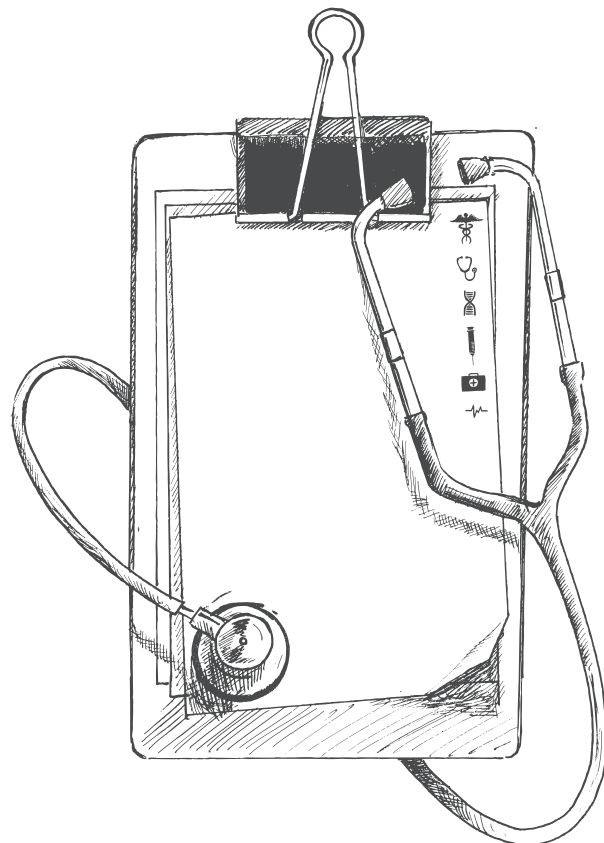
### English Composition: 6 semester hours

ENG 111	Writing & Inquiry (required)	3
*ENG 112	Writing/Research	3

### Humanities/Fine Arts: 3 semester hours

ART 111	Art Appreciation	3
ART 114	Art History Survey I	3
ART 115	Art History Survey II	3
MUS 110	Music Appreciation	3
MUS 112	Introduction to Jazz	3
*PHI 215	Philosophical Issues	3
*PHI 240	Introduction to Ethics	3
HUM 115	Critical Thinking	3

\* = indicates courses with pre-requisite



## Career and College Promise College Transfer Pathway Leading to the Associate in Engineering (P1052C)

The College Transfer Pathway (CCP) leading to the Associate in Engineering is designed for high school juniors and seniors who wish to begin study toward the Associate in Engineering degree and a baccalaureate degree in a STEM or technical major.

### GENERAL EDUCATION: (28 semester hours)

The general education requirement includes study in courses selected from the Universal General Education Transfer Component (UGETC).

#### English Composition: 6 semester hours (required)

ENG 111	Writing & Inquiry	3
*ENG 112	Writing/Research in the Disciplines	3

#### Humanities/Fine Arts and Communications: 3 semester hours

ART 111	Art Appreciation	3
ART 114	Art History Survey I	3
ART 115	Art History Survey II	3
COM 231	Public Speaking	3
*ENG 231	American Literature I	3
*ENG 232	American Literature II	3
*ENG 241	British Literature I	3
*ENG 242	British Literature II	3
MUS 110	Music Appreciation	3
MUS 112	Introduction to Jazz	3
*PHI 215	Philosophical Issues	3
*PHI 240	Introduction to Ethics	3

#### Social/Behavioral Sciences: 3 semester hours (required)

ECO 251	Principles of Microeconomics	3
---------	------------------------------	---

#### Mathematics: 8 semester hours (required)

Calculus I is the lowest level math course that will be accepted by the engineering programs for transfer as a math credit. Students who are not calculus-ready will need to take additional math courses.\*

*MAT 271	Calculus I	4
*MAT 272	Calculus II	4

#### Natural Sciences: 8 semester hours

CHM 151	General Chemistry I	4
*PHY 251	General Physics I	4
*PHY 252	General Physics II	4

#### Other Required Courses: 6 semester hours

##### Academic Transition: 1 semester hour (required)

ACA 122	College Transfer Success	1
---------	--------------------------	---

##### Engineering: 5 semester hours (required)

EGR 150	Introduction to Engineering	2
DFT 170	Engineering Graphics	3

##### \*Prerequisite General Education: 0-8 semester hours

MAT 171	Pre-Calculus Algebra	
---------	----------------------	--

Students who do not place directly into MAT 271 must complete MAT 171 and MAT 172 prior to enrolling in MAT 271 Calculus I.

##### Foreign Language: 6 semester hours (Optional)

SPA 111	Elementary Spanish I	3
*SPA 112	Elementary Spanish II	3

High school students in the CCP College Transfer Pathway Leading to the Associate in Engineering must complete the entire pathway before taking additional courses in the Associate in Engineering degree with the following exception: Students may take additional math courses beyond MAT 272 that are required for the Associate in Engineering degree.

#### Total Semester Hours Credit in Pathway: 34-50

\* = indicates courses with pre-requisite

# CAREER TECHNICAL EDUCATION PATHWAYS

The Career and College Promise Career Technical Education (CTE) Pathway leads to a certificate or diploma aligned with a high school Career Cluster. Upon completion of a CTE Pathway, students will have earned substan-

## ELIGIBILITY REQUIREMENTS

To be eligible for enrollment, a high school student must:

- (A) Be a high school junior or senior; and
- (B) Have an unweighted GPA of 2.8 on high school courses; or
- (C) Demonstrate college readiness in English, reading and mathematics by meeting benchmarks on diagnostic assessment tests which have been approved by the State Board of Community Colleges.
- (D) Juniors or seniors who do not meet the eligibility requirements in 1D SBCCC 6 400.11(n)(1)(A) – (C) shall have the recommendation of the high school principal or the high school principal’s designee and the college’s chief student development administrator or the college’s chief academic officer. A recommendation is only allowed for entry into Career and College Promise Career and Technical Education Pathway that does not include Universal General Education Transfer Component (UGETC) courses.

OR

(1) Colleges may enroll eligible high school Freshmen and Sophomores only in industrial technologies (program code 50xxx), engineering technologies (program code 40xxx), agriculture and natural resources (program code 15xxx), and transportation (program code 60xxx), construction (program code 35xxx), and business technologies (program code 25xxx) certificate and diploma programs.

(2) Freshmen and Sophomores may not enroll in Career and Technical Education Pathways that include Universal General Education Transfer Component (UGETC) courses.

(3) To be eligible for enrollment, a high school student must be a high school Freshman or Sophomore. A Freshman or Sophomore must:

- (A) Have passed Math I with a grade of “C” or better;
- (B) Test college ready in mathematics as determined by the assessment given by the North Carolina Department of Public Instruction;
- (C) Test college ready in English and reading as determined by the assessment given by the North Carolina Department of Public Instruction;
- (D) Have received information outlining program requirements for completion of the certificate or diploma; and

(E) Have the recommendation of the high school principal or the principal’s designee and the college’s chief student development administrator or the college’s chief academic officer; or

(F) Demonstrate college readiness in English, reading and mathematics by meeting benchmarks on diagnostic assessment tests which have been approved by the State Board of Community Colleges and have the recommendation of the high school principal or the high school principal’s designee and the college’s chief student development administrator or the college’s chief academic officer.

## MAINTAINING ELIGIBILITY:

A high school student must meet the following criteria:

- a. Continue to make progress toward high school graduation, and maintain a 2.0 GPA in college coursework after completing two courses.
- b. A student who falls below a 2.0 GPA after completing two college courses will be subject to the college’s policy for satisfactory academic progress.

Students may enroll in up to two career technical education pathways at a time and may only enroll in courses that are part of those pathways. Eligible students may also enroll in a college transfer pathway and career technical pathway at the same time.





**Accounting & Finance -Income Tax Preparation CCP (C25800CP)**

Fall Semester 1		Credit Hours
ACC 120	Principles of Financial Accounting	4
ACC 129	Individual Income Taxes	3
CIS 110	Introduction to Computers	3
Spring Semester 1		Credit Hours
*ACC 130	Business Income Taxes	3
CTS 130	Spreadsheet	3
<b>TOTAL Credit Hours</b>		<b>16</b>

**Certificate in Automotive Systems Technology CCP (C60160CP)**

Fall Semester 1		Credit Hours
TRN 110	Introduction to Transport Technology	2
TRN 120	Basic Transportation Electricity	5
Spring Semester 1		Credit Hours
AUT 151	Brake Systems	3
AUT 181	Engine Performance I	3
<b>TOTAL Credit Hours</b>		<b>13</b>

**Certificate in Automotive Systems Technology - Intermediate CCP (C60160IM)**

Fall Semester 1		Credit Hours
TRN 120	Basic Transportation Electricity	5
TRN 140	Transportation Climate Control	2
TRN 140A	Transportation Climate Control Lab	2
TRN 180	Basic Welding for Transportation	3
Spring Semester 1		Credit Hours
AUT 181	Engine Performance I	3
AUT 281	Advanced Engine Performance	3
<b>TOTAL Credit Hours</b>		<b>18</b>

\* = indicates courses with pre-requisite

**Certificate in Business Administration - Business Basics CCP (C25120CB)**

Fall Semester 1		Credit Hours
BUS 110	Introduction to Business	3
ACC 120	Principles of Financial Accounting	3
Spring Semester 2		Credit Hours
BUS 137	Principles of Management	3
MKT 120	Principles of Marketing	3
<b>TOTAL Credit Hours</b>		<b>12</b>

**Certificate in Business Administration - Marketing CCP (C25120CM)**

Fall Semester 1		Credit Hours
MKT 223	Customer Service	3
ETR 220	Innovation and Creativity	3
Spring Semester 2		Credit Hours
MKT 120	Principles of Marketing	3
MKT 232	Social Media Marketing	3
<b>TOTAL Credit Hours</b>		<b>12</b>

**Certificate in Collision Repair and Refinishing - CCP (C60130CP)**

Fall Semester 1		Credit Hours
AUB 111	Painting and Refinishing I	4
WLD 110	Cutting Processes	2
Spring Semester 1		Credit Hours
AUB 121	Non-Structural Damage I	3
AUB 131	Structural Damage I	4
<b>TOTAL Credit Hours</b>		<b>13</b>

**Certificate in Computer - Integrated Machining Technology CCP (C50210CP)**

Fall Semester 1		Credit Hours
MAC 111	Machining Technology I	6
Spring Semester 1		Credit Hours
MAC 112	Machining Technology II	6
<b>TOTAL Credit Hours</b>		<b>12</b>

### Certificate in Criminal Justice

#### Technology I & II CCP (C55180II)

Fall Semester 1		Credit Hours
CJC 111	Introduction to Criminal Justice	3
CJC 112	Criminology	3
Spring Semester 1		Credit Hours
CJC 113	Juvenile Justice	3
CJC 131	Criminal Law	3
<b>TOTAL Credit Hours</b>		<b>12</b>

### Certificate in Criminal Justice

#### Technology III & IV CCP (C55180IV)

Fall Semester 1		Credit Hours
CJC 111	Introduction to Criminal Justice	3
CJC 121	Law Enforcement Operations	3
CJC 141	Corrections	3
Spring Semester 1		Credit Hours
CJC 113	Juvenile Justice	3
CJC 212	Ethics and Community Relations	3
CJC 231	Constitutional Law	3
<b>TOTAL Credit Hours</b>		<b>18</b>

### Certificate in Early Childhood Preschool CCP (C55860CP)

Fall Semester 1		Credit Hours
EDU 119	Introduction to Early Childhood Education	4
EDU 131	Child, Family, and Community	3
EDU 146	Child Guidance	3
Spring Semester 1		Credit Hours
EDU 145	Child Development II	3
EDU 153	Health, Safety, and Nutrition	3
<b>TOTAL Credit Hours</b>		<b>16</b>

### Certificate in Electrical Systems Technology

#### CCP (C35130CP)

Fall Semester 1		Credit Hours
ELC 113	Residential Wiring	4
Spring Semester 1		Credit Hours
ELC 114	Commercial Wiring	4
Fall Semester 2		Credit Hours
ELC 131	Circuit Analysis	4
ELC 131A	Circuit Analysis Lab	1
<b>TOTAL Credit Hours</b>		<b>13</b>

### Certificate in Electronics Engineering

#### Technology CCP (C40200CP)

Fall Semester 1		Credit Hours
ELC 131	Circuit Analysis	4
ELC 131A	Circuit Analysis Lab	1
Spring Semester 1		Credit Hours
ELN 131	Analog Electronics I	4
Fall Semester 2		Credit Hours
ELN 133	Digital Electronics	4
<b>TOTAL Credit Hours</b>		<b>13</b>



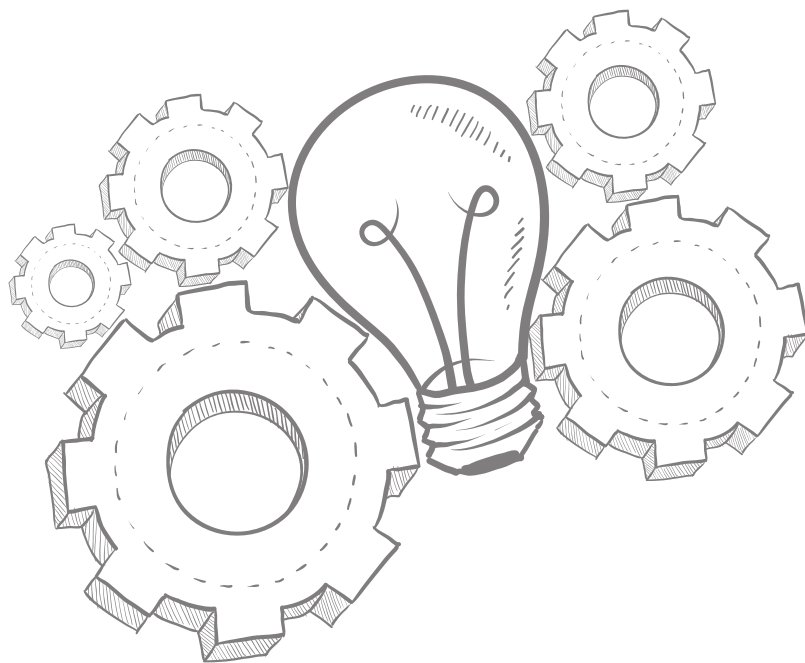
## Certificate in Forest Management Technology

### CCP (C15200CP)

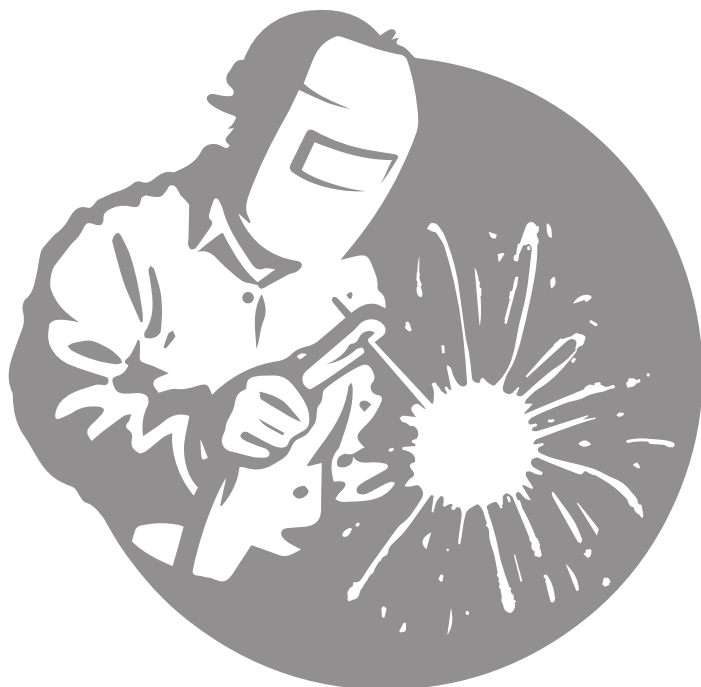
Fall Semester 1		Credit Hours
FOR 121	Dendrology	4
FOR 171	Introduction to Forest Resources	3
FOR 215	Introduction to GIS/GPS	3
FWL 142	Wildlife Management	3
Spring Semester 1		Credit Hours
FOR 131	Forest Measurements	3
<b>TOTAL Credit Hours</b>		<b>16</b>

## Certificate in Information Technology - Cyber Security CCP (C25590CP)

Fall Semester 1		Credit Hours
CCT 110	Intro to Cyber Security	3
SEC 110	Security Concepts	3
Spring Semester 1		Credit Hours
CTI 120	Network and Foundation	3
NOS 120	Linux/UNIX Single User	3
SEC 160	Security Administration	3
<b>TOTAL Credit Hours</b>		<b>15</b>



\* = indicates courses with pre-requisite



## Certificate in Medical Office Administration CCP (C25310CM)

Fall Semester 1		Credit Hours
MED 121	Medical Terminology I	3
OST 149	Medical Legal Issues	3
Spring Semester 1		Credit Hours
*MED 122	Medical Terminology II	3
OST 148	Medical Coding, Billing & Insurance	3
<b>TOTAL Credit Hours</b>		<b>12</b>

## Certificate Welding Technology - Basic CCP (C50420B)

Fall Semester 1		Credit Hours
BPR 111	Print Reading	2
WLD 110	Cutting Processes	2
WLD 115	SMAW (Stick) Plate	5
WLD 121	GMAW (MIG) FCAW/Plate	4
<b>TOTAL Credit Hours</b>		<b>13</b>

## CURRICULUM

### Arts, Sciences, & Natural Resources and Transitional Studies

**HCC-ASNR@haywood.edu**

Associate in Arts  
Associate in Engineering  
Associate in General Education Nursing  
Associate in Science  
Fish & Wildlife Management Technology  
Forest Management Technology

### Business and Industry

**HCC-BUSIND@haywood.edu**

Accounting & Finance  
Automotive Systems Technology  
Business Administration  
Collision Repair & Refinishing Technology  
Computer-Integrated Machining Technology  
Electrical Systems Technology  
Electronics Engineering Technology  
Industrial Systems Technology  
Information Technology  
Professional Crafts-Clay  
Professional Crafts-Fiber  
Professional Crafts-Jewelry  
Professional Crafts-Wood  
Small Business Center  
Welding Technology

### Health and Human Services

**HCC-HHS@haywood.edu**

Cosmetology  
Criminal Justice Technology  
Early Childhood Education  
Medical Assisting  
Medical Office Administration  
Nursing  
RN Completer Program

## CONTINUING EDUCATION

### Workforce Continuing Education

**HCC-WCE@haywood.edu**

Allied Health  
Corporate & Community Education  
Creative Arts  
Emergency Services  
Fire  
Human Resource Development  
Industry and Customized Training  
Online Learning & Computer Training  
Pharmacy Technician  
Public Safety  
Special Interests

## SKILLS & HIGH SCHOOL

### College and Career Readiness

**HCC-CCR@haywood.edu**

Adult Basic Skills  
Adult High School  
Basic Skills Plus  
Career College  
ESL (English as a Second Language)  
High School Equivalency (Formerly GED)  
Learning Support Services

### High School Programs

**HCC-CCP@haywood.edu**

Career & College Promise  
Haywood Early College



**haywood.edu**  
**828.627.4500**

Haywood Community College is accredited by the Southern Association of Colleges and Schools Commission on Colleges to award certificate, diploma, and associate's degrees.

HCC is an equal opportunity institution and does not discriminate on the basis of race, religion, ethnicity, national origin, gender, gender identity, sex, age, disability, genetic information and veteran status.