

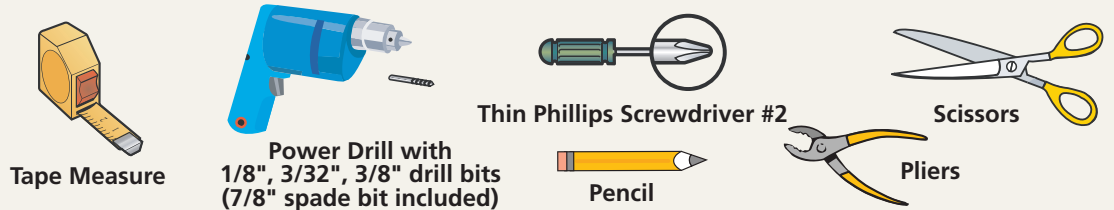


NOTE TO THE INSTALLER:

This Owner's Guide and Installation Manual is the property of the homeowner. Please leave it with the homeowner upon completion of the installation.



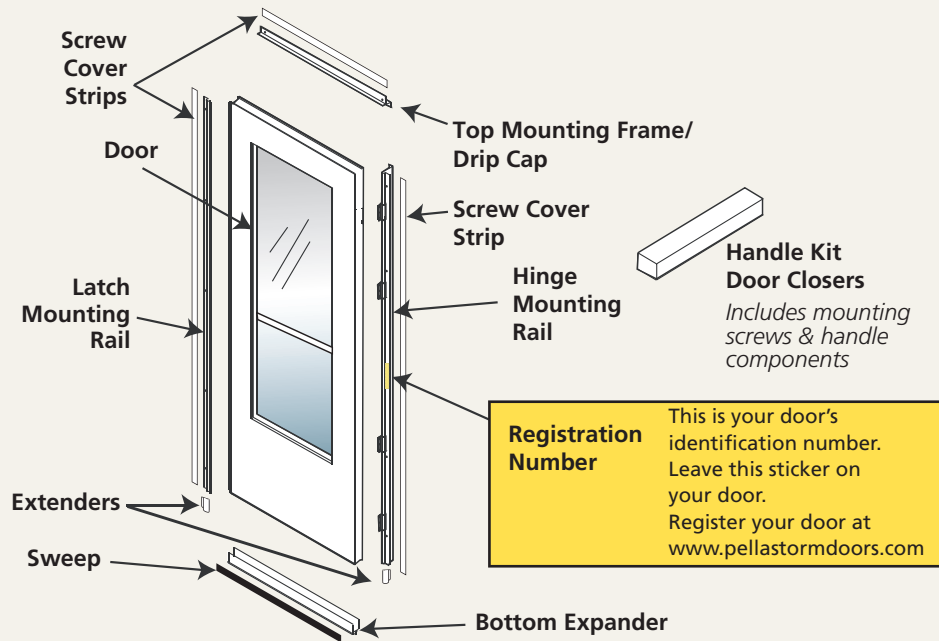
Recommended Tools



For safety reasons, the assistance of a second person is recommended when handling the door.

Storm Door Components

NOTE: Actual door styles may vary from illustrations, however, the installation steps will be the same.



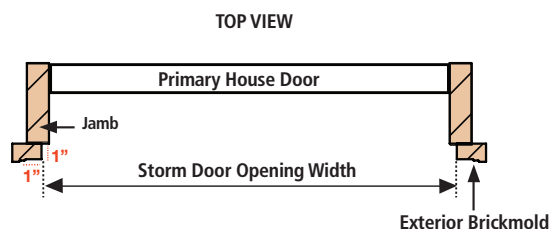
Registration Number
This is your door's identification number. Leave this sticker on your door. Register your door at www.pellastormdoors.com

Before you begin

Make sure brickmold is in good condition and securely fastened before beginning installation. It is highly recommended that additional fasteners be used to reinforce brickmold.

Shimming may be required to fit the existing opening (shims not included). Measure the width of the opening in three locations. Using the smallest measurement, refer to the chart below and shim as needed.

1" wide x 1" deep mounting surface is required.

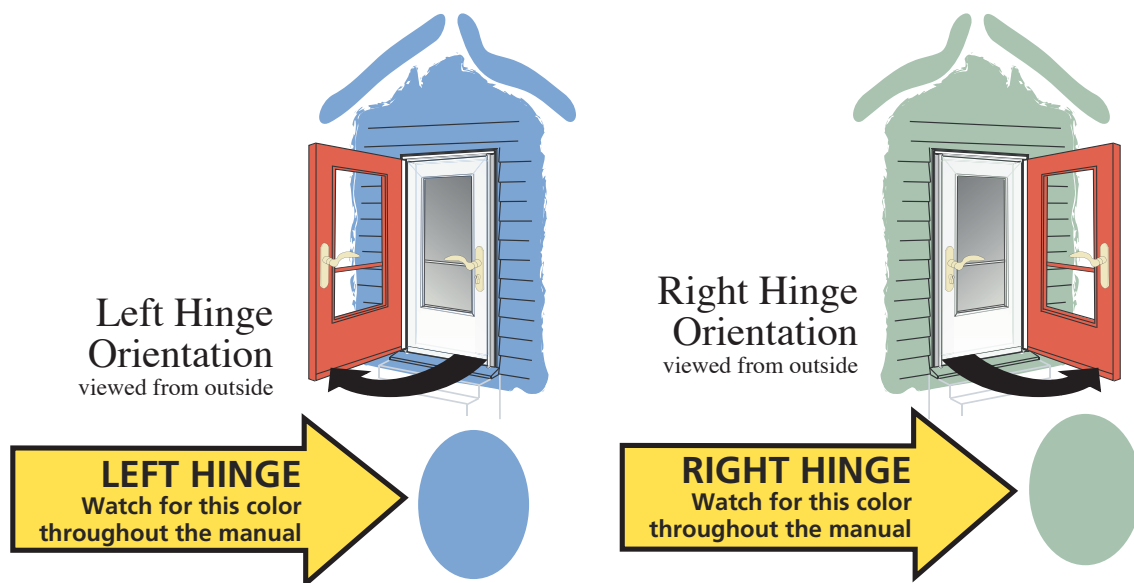


Nominal Door Sizes	Opening Width (no shim required)	Opening Width (shim required)	Shim to this Opening Width	Max Height
30 x 81"	29 7/8 to 30"	30 1/16 to 30 3/8"	29 7/8 to 30"	80" to 81"
32 x 81"	31 7/8 to 32"	32 1/16 to 32 3/8"	31 7/8 to 32"	
34 x 81"	33 7/8 to 34"	34 1/16 to 34 3/8"	33 7/8 to 34"	
36 x 81"	35 7/8 to 36"	36 1/16 to 36 3/8"	35 7/8 to 36"	

START

Your Installation

1 Determine if you want a Left Hinge or Right Hinge Door



These instructions depict a Right Hinge installation unless otherwise noted.

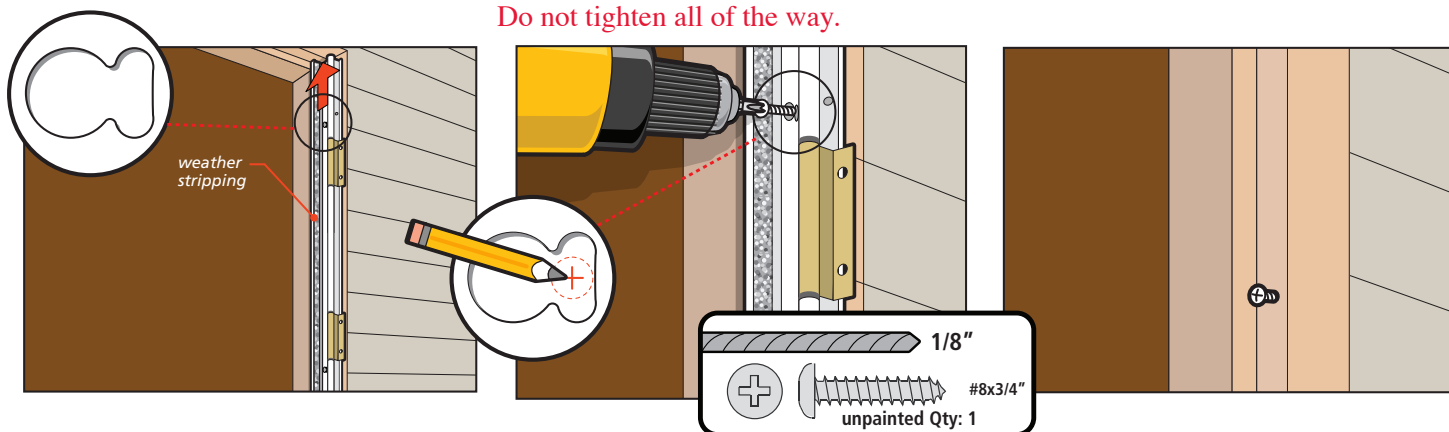
2 Set Placeholder Screw for Hinge Rail

2A Place the hinge rail tight against the side door frame that the storm door is to be hinged and slide to the top.

2B Use FIRST hole from the top only. Mark hole with pencil and remove hinge rail. Pre-drill and attach a screw from the Inside Jamb Screws package.

Do not tighten all of the way.

2C Leave 1/16" to 1/8" of screw exposed.



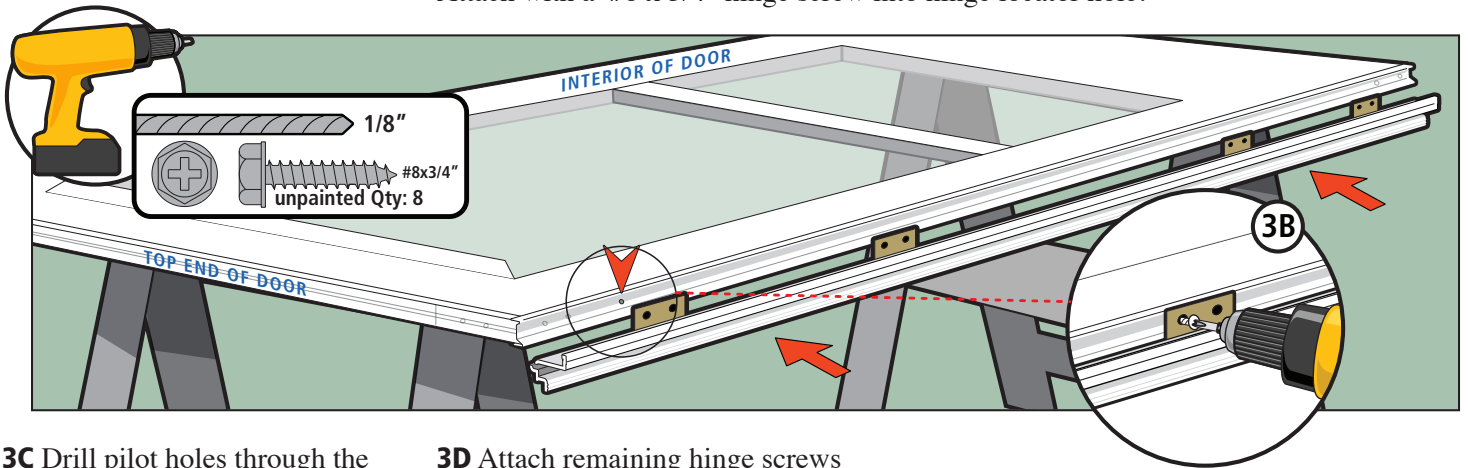
3 Attach Hinge Rail to Storm Door

3A Place interior side up.

3B Remove second screw from top of door and discard. Use this hole as your hinge locator hole and place hinge rail as shown. ▼

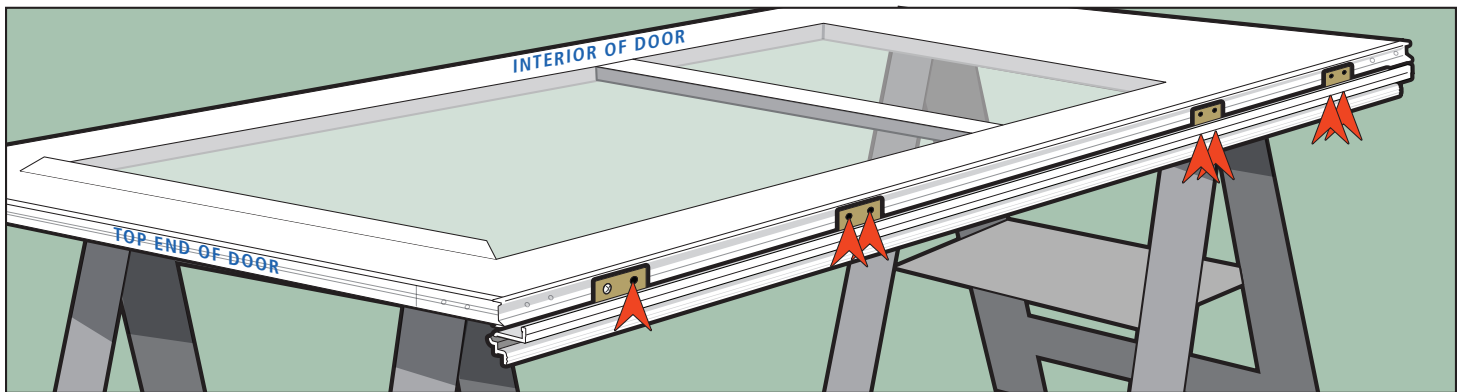
Note: The hinge rail will overlap the top of the door by 1/16"–1/8".

Attach with a #8 x 3/4" hinge screw into hinge locator hole.

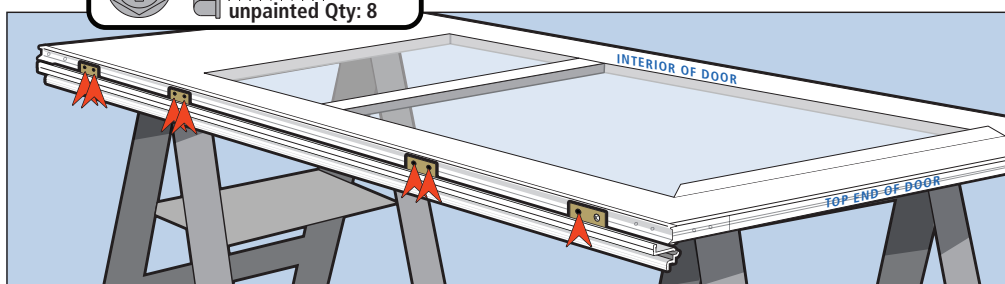
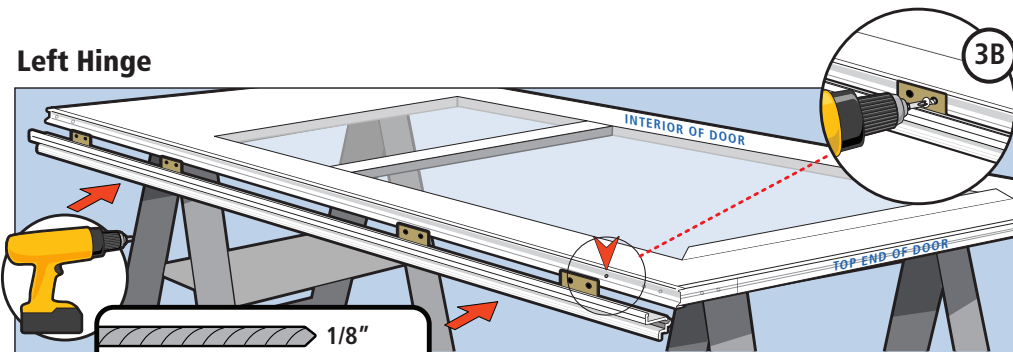


3C Drill pilot holes through the remaining holes in the hinges.

3D Attach remaining hinge screws starting from the bottom. ▼

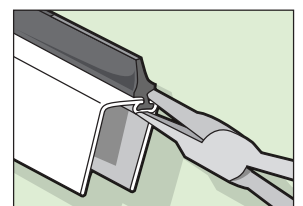
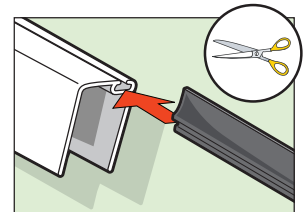


Left Hinge



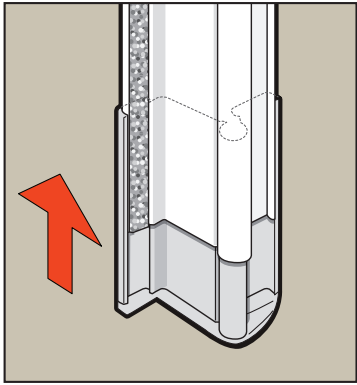
4 Install Sweep in Expander

4A Install sweep. To aid in installation, soapy water or liquid soap can be applied to the channel of the expander. Allow the sweep to return to normal size. Trim the sweep to length and crimp both ends of the channel with a pliers.

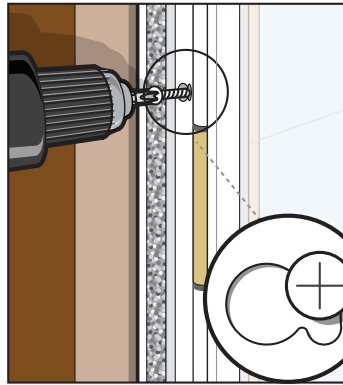


5 Attach Storm Door to Door Frame

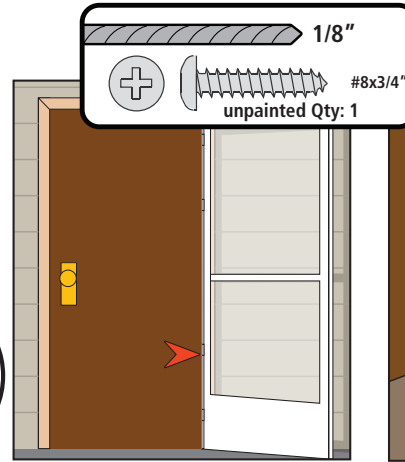
5A Slide rail extender into the bottom of the hinge rail.



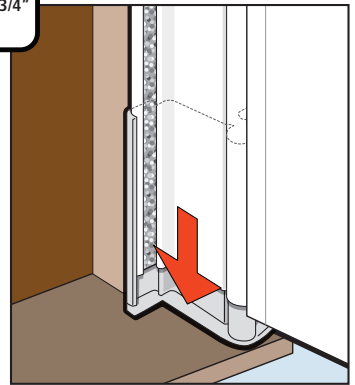
5B Hang storm door onto door frame using the placeholder screw. *The door will settle approximately 1/16".* Tighten screw while pushing top of hinge rail tight against the door frame.



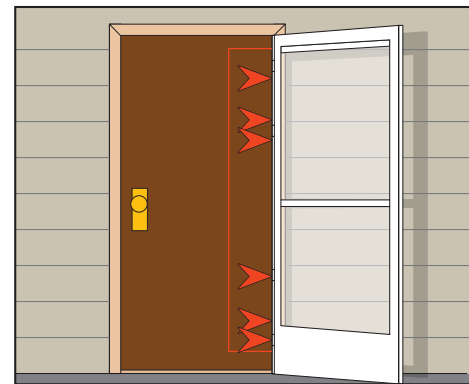
5C At the second round hole from the bottom, pre-drill a hole and install an inside jamb screw.



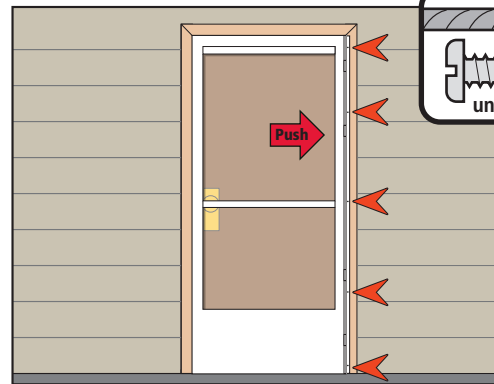
5D Slide rail extender into sill. Loosen inside jamb screw as needed.



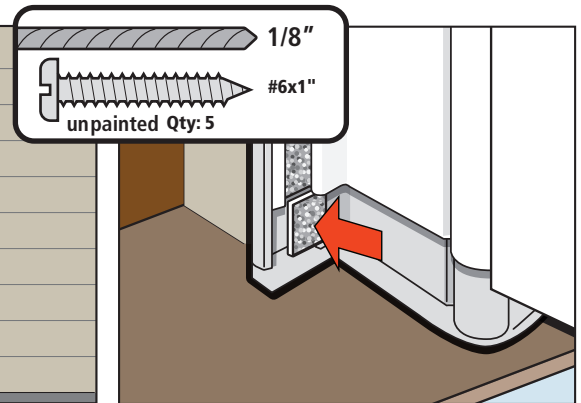
5E Pre-drill and install inside jamb screws through the inner side of the hinge rail in all 6 remaining locations. *Do not over tighten screws.*



5F Close the door and push it tight against door frame. Pre-drill holes and install mounting frame screws on the outer side of hinge rail. *Do not over tighten screws.*

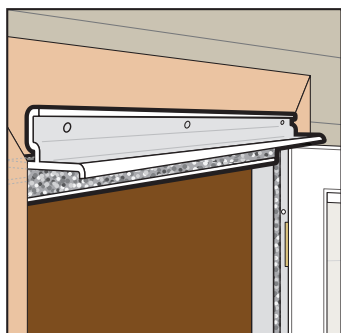


5G Cut rail extender weatherstripping to length, peel adhesive backing, and install.

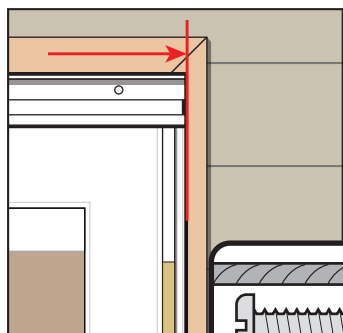


6 Install the Drip Cap

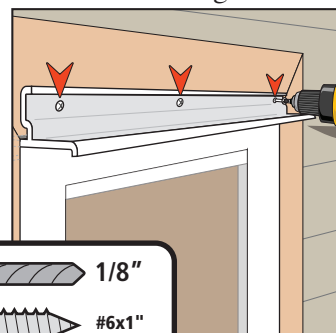
6A Place the drip cap on the door frame above the storm door.



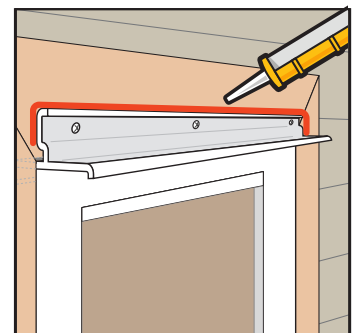
6B Close door to verify consistent clearance. Align drip cap to end of hinge rail.



6C Pre-drill holes and install mounting frame screws starting with the screw hole closest to the hinge rail.

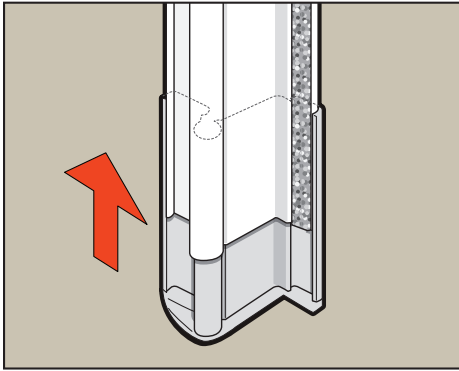


6D Caulk if desired.

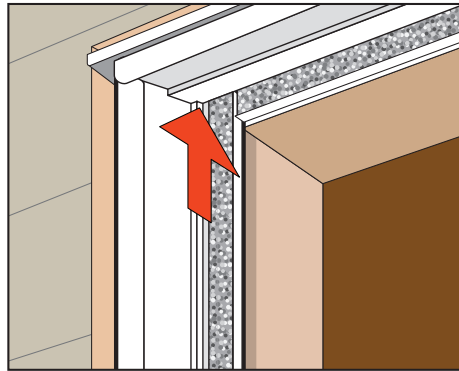


7 Install Latch Rail

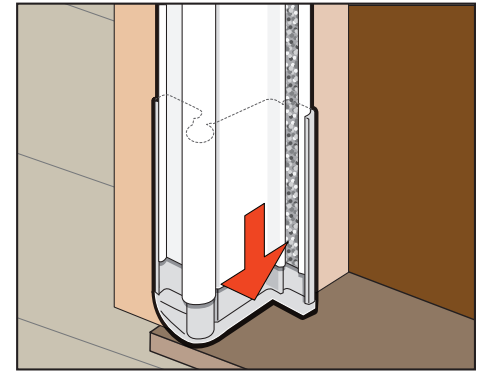
7A Slide rail extender into the bottom of latch rail.



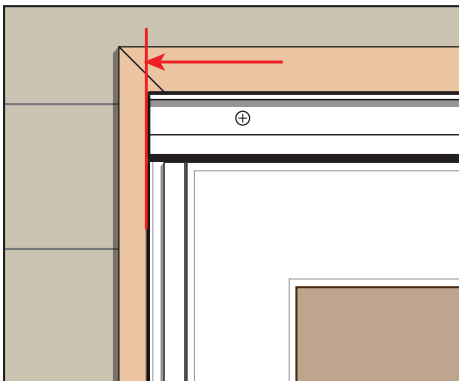
7B Place latch rail tight against the drip cap.



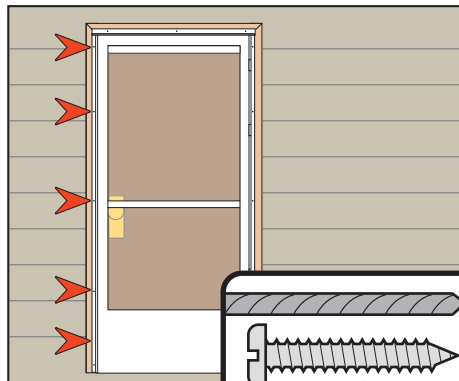
7C Slide rail extender to sill.



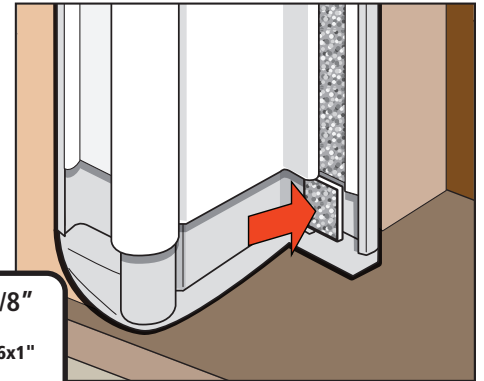
7D Align the edge of the drip cap with the outside edge of the latch rail. Verify the door closes freely without hitting the latch rail.



7E Starting at the top hole, pre-drill and fasten the latch rail with a #6x1" mounting frame screw. Ensure there is a consistent reveal between the door and latch rail. Continuing down the latch rail, pre-drill and install one mounting frame screw at a time, keeping a consistent reveal.



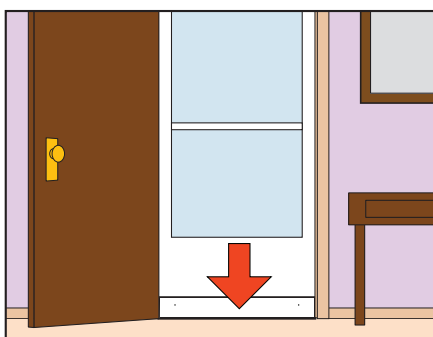
7F Cut rail extender weather stripping to length, peel adhesive backing and install.



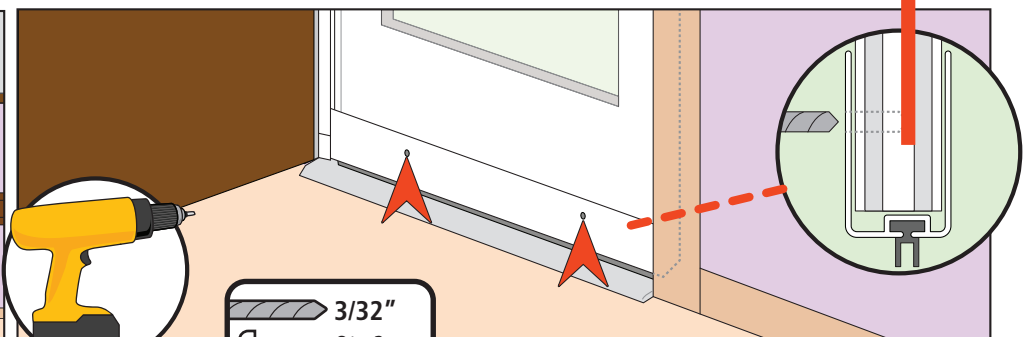
8 Install the Handle Set Follow the instructions in handle kit.

9 Adjust Expander

9A Adjust the expander until the sweep lightly touches the threshold.

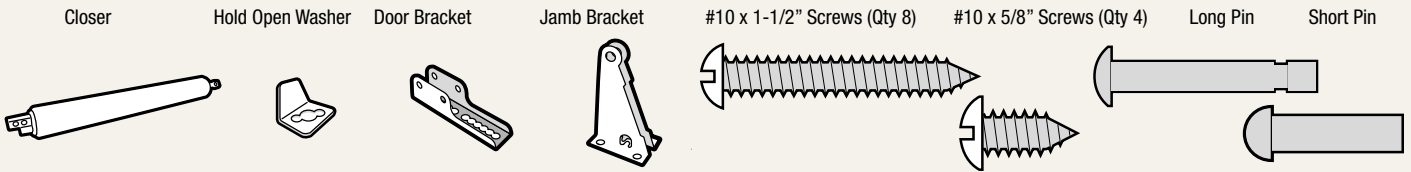


9B From the interior, drill two 3/32" pilot holes through the holes in the expander. DO NOT drill all the way through the door. Secure with screws.



10 Install Closers

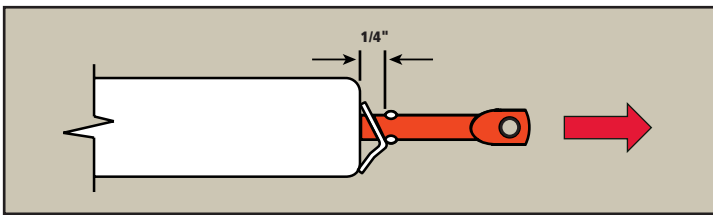
Closer Parts



10A Insert Hold Open Washer onto the Closer Rod.

Use a thin screw driver to pull out the Closer Rod 1/4" and slide the Hold Open Washer against the end of the Closer to hold the Rod in place.

Repeat for the other Closer.



10B From the top of the opening on the hinge side, measure down 2 1/4" and make a horizontal mark on the door jamb.

Measure up 1" from the **top** of the bottom expander and make a horizontal mark on the door jamb.

Center the Jamb Brackets on these marks 3/8" away from the inside face of the storm door. Mark the 4 screw holes in each Jamb Bracket and drill 1/8" pilot holes.

Secure each Jamb Bracket with 4 #10 x 1 1/2" Phillips Pan Head Screws.

Secure the Closers to the Jamb Brackets by inserting a Short Pin through the Jamb Brackets and Closer Rods.

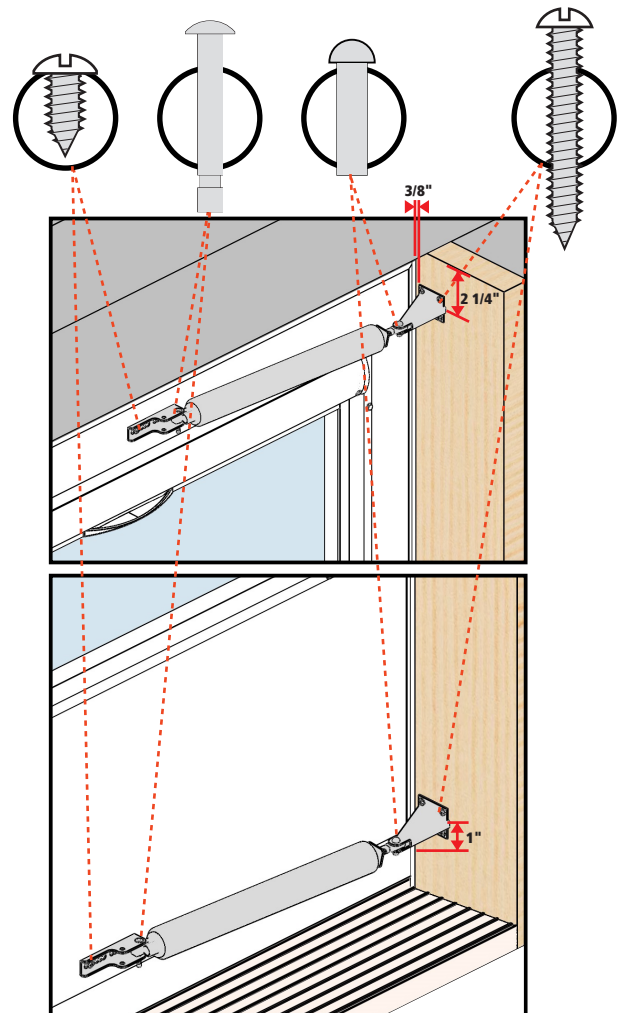
Attach the Door Brackets to the other end of the Closers by inserting a Long Pin through the Door Bracket and the hole at the end of the Closer.

Close and latch the door.

Level the closers. Mark a hole on the door through the center of each of the Door Bracket slots.

Drill 2 pilot holes per door bracket in the door. **Caution: DO NOT DRILL ALL THE WAY THROUGH THE DOOR.**

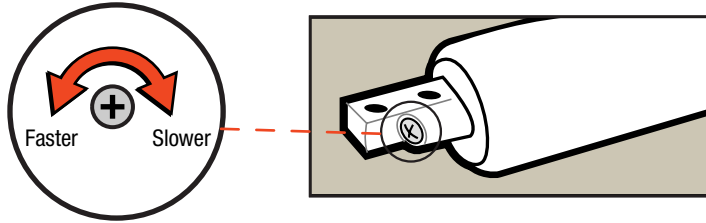
Secure each door bracket to the door using 2 #10 x 5/8" Phillips Pan Head Screws.



10 Install Closers Continued

10C Using a Phillips screw driver, turn the adjusting screw at the end of the Closer to adjust the closing speed.

It may be necessary to unhook one of the closers from your door and adjust them one at a time.

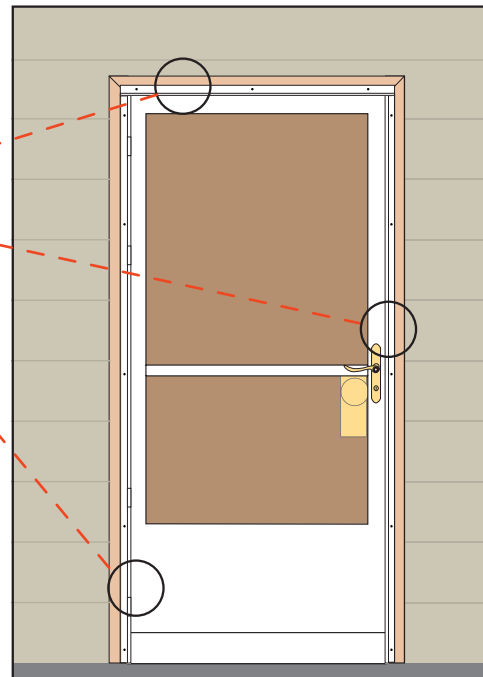


11 Finishing Touches

11A Snap screw cover strips into place by anchoring the outer side first. Start at the top end and slide finger down strip while pressing. Trim to fit as needed.

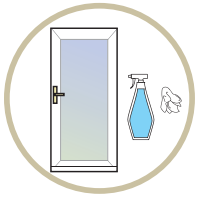


Note: *Straight leg (marked red) towards outside of rail*



11B Rolscreen doors only: Remove foam shipping blocks.

Care and Maintenance

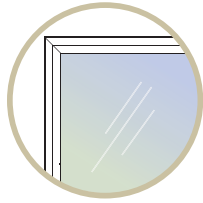


Door Cleaning

Use a soft cloth with any household grease-cutting cleaner to clean the door.

PLEASE NOTE: Thin marks on the painted surfaces of the door can be removed using turpentine and lightly rubbing with a clean cloth.

IMPORTANT: DO NOT use brass polish or steel wool on the bottom expander. Use a household grease-cutting cleaner or a mild soap and water solution.



Glass Cleaning

Routine Cleaning: Use any household glass cleaner.

Troubleshooting Guide

For questions not listed here, call one of our customer service representatives toll-free at 866-225-6899 or visit www.pellastormdoors.com

Common Questions	Probable Causes	Suggested Solutions
Door does not open or close properly	Entryway framing is out or square/plumb or frame is warped	1. Verify the entryway framing and shim as necessary. [see page 2]
	Closer(s) out of position or adjustment	1. Remove the adjustment screw from the closer(s), cycle the door a few times, then replace the screw. 2. Adjust the position of the closer door bracket until the door operates properly.
	Bottom Expander is out of position	1. Verify the expander is centered on the door—adjust if necessary. 2. Verify the expander is not too low—adjust as necessary.
	Hinges are binding	1. Verify mounting frame screws are not over tightened—back off screws slightly. 2. Verify entryway framing is not twisted or warped—shim or modify as necessary. 3. Verify hinge mounting frame is not twisted or bent —replace if necessary.
Handle does not latch properly	Latch not hitting trim plate	1. Adjust the trim plate until the latch catches. [see separate hardware instruction]
	Closer is out of position	1. See "Closer(s) out of position" in the "Door does not open or close properly" question above.
Water between the storm door and entry door	Bottom Sweep is making a tight seal against the door sill	1. Open the storm door and notch up to 1/2" off the ends of the black vinyl sweep.

Pella® Storm Doors Limited Warranty

Congratulations on choosing a Pella storm door to protect and beautify your home. This superior quality door has been designed to give you years of trouble-free service, and you are protected by this limited warranty:

Pella warrants to the ORIGINAL HOMEOWNER PURCHASER of this storm door that it will, without charge to the purchaser, provide parts or exchange, at its option, any door determined to be defective in material or workmanship for 20 years after the purchase date. The purchaser will be responsible for transportation charges. Should the door be determined to be defective in material or workmanship AFTER 20 years from the purchase date, the original purchaser may buy one new Pella storm door at 50% of the then-current manufacturer's suggested list price for as long as the original purchaser owns the home on which the door was installed. The purchase must be made directly from the factory, and all transportation charges are the responsibility of the purchaser.

Should the door be determined to be defective and the purchaser incurs a reinstallation cost within three years of the purchase date, he or she may be reimbursed for these costs up to a maximum of \$25.00, upon furnishing a copy of the invoice for the reinstallation costs.

As a condition of this warranty, it is required that the door be used for residential use only in an owner-occupied home, that it be installed properly as an operating door according to manufacturer's instructions, and that it not be altered in any way. For multi-unit housing applications, ask your dealer for a copy of the appropriate warranty or phone Pella's Customer Service Department at the phone number listed below. This warranty is not transferable.

To make a claim under this warranty, you should:

- Call our Customer Service Department at 866-225-6899 or write to Pella Warranty Service; 2333 Eastbrook Drive; Brookings, SD 57006 USA.
- Furnish original or a copy of the sales receipt or other documents showing the original purchase date and that you are the original purchaser of this door. Exchange is limited to supplying a replacement door of comparable size, style, and color and does not include cost of removal or installation except as noted.

The warranty on the latch set and air closer is one year, and any labor charges are not covered. This warranty excludes all damage to glass and screen. This warranty does not cover problems caused by improper storage, handling, installation, use, modification, or maintenance, by Acts of God or by accidents, including accidental glass breakage. It does not apply to normal wear or discoloration of finish; finish problems caused by mechanical damage or abrasion; normal effects of sun and weather, including acid rain, salt spray, or other corrosive elements; damage caused by severe wind; or damage caused by customer abuse or neglect. Oil-Rubbed Bronze is a living finish that will develop its own unique patina with use and is not covered under the Lifetime Finish Guarantee. Bright Brass, Antique Brass, Brushed Brass and Satin Nickel hardware is guaranteed not to tarnish and carries a lifetime finish warranty for as long as the purchaser owns their home.

THIS WARRANTY EXCLUDES ALL INCIDENTAL AND CONSEQUENTIAL DAMAGES. Nothing in this document shall give rise to or extend the period of any warranties implied under state or provincial law, and no implied warranty shall extend beyond the periods covered by this written warranty. Neither Pella Corporation nor any seller of Pella products will be responsible for incidental or consequential damages which may result from a product defect or malfunction. Some states do not allow the exclusion or limitation of incidental or consequential damages, so the above limitation or exclusion may not apply to you. This warranty gives you specific legal rights, and you may have additional rights which vary from state to state. Effective 7/2006.

© Pella Corporation