

November Newsletter 2015

ASHRAE Atlanta Chapter



President's Message	2
Chapter Calendar	3
History	4-5
ASHRAE Learning Institute	6-7
Sponsors	8
Membership Promotion (MP)	9
Student Activities	10
2015 Red & Green Scene	11
Scholarship Program	12
ASHRAE Publications	13
How to Join ASHRAE	14
Websites Reference List	15
2015-2016 Chapter Officers	16
Industry Opportunities	17
Social Media Networking	18

UPCOMING IMPORTANT DATES

Red & Green Scene Holiday Event.....December 3, 2015



November 2015

Thanks for everyone who came out to our lunch meeting earlier in November. We had a packed house for a great speaker and great food. As a reminder, we won't be having a chapter meeting in December but look forward to seeing you at the next meeting on January 12, 2016.

As a reminder, we are co-hosting an event on December 3rd with AIA and USGBC, Red and Green Scene. This will be our holiday get together and I look forward to seeing lots of people at this event. It should be a great time with our industry friends.

I hope everyone has a safe and fun holiday season. Remember, during this time of the year, it's a great opportunity to reflect on 2015 and to look forward to having an even better 2016.

Don't forget, we still have chapter sponsorship opportunities available. Go to <http://www.ashraeatlanta.org/sponsorships> to get more information.



John Pruitt

Atlanta Chapter President 2015-2016

president@ashraeatlanta.org

www.ashraeatlanta.org

Chapter Calendar



2015

December

Dec 3, 2015 - Red & Green Scene Holiday Event

2016

January

Jan 12, 2016 - Chapter Meeting

Jan 23-27, 2016 - Winter Conference, Orlando, FL

February

Feb 9, 2016 – Chapter Meeting

March

Mar 8, 2016 – Chapter Meeting

April

Apr 12, 2016 – Chapter Meeting



Balzer Theater At Herren's

Historical buildings are a standing record of how our built environment was created—a record of lessons learned and the development of foundational principles. They shed light on a city's history and planning and design. In this series, I'll be writing about a few of Atlanta's many historical buildings to highlight Atlanta's celebrated past and the evolution of the built environment.

This month's feature is on a once-famous restaurant that has recently been renovated into a state-of-the-art theater. Balzer Theater at Herren's is located at 84 Luckie St in the heart of the Fairlie-Poplar District of Downtown Atlanta, and is owned and operated by Theatrical Outfit, a 39-year old Atlanta-based nonprofit theater group.

Originally known as Herren's Restaurant, it was the place for Atlantans to indulge in their famous cinnamon rolls. Herren's was opened in 1934 by prizefighter Charlie 'Red' Herren. Red later sold the place to the Guido Negri family, who kept the restaurant open until 1987. The restaurant became famous for reasons other than the meat-and-three and their delicious cinnamon rolls. In 1962, the Negri family was the first to voluntarily desegregate and open their doors to black customers. It was the kick-off location for the "Save the Fox" campaign that began in the mid-1970's. Herren's also housed Atlanta's very first lobster tank.

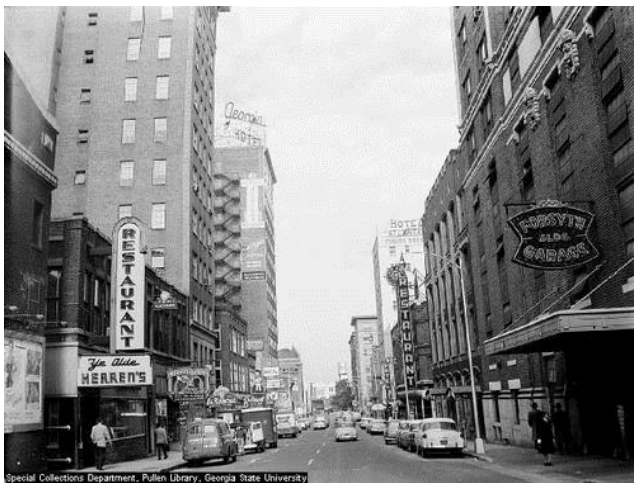


Photo 1: Luckie Street in 1956 with Herren's on the Left

After closing their doors, the building remained vacant for nearly 17 years until 2004 when Theatrical Outfit discovered the location. Previously located at various facilities around Atlanta, Theatrical Outfit was looking for a permanent place to call home. After considering several other locations, the group settled on Herren's due to its cultural legacy and historical significance.



Photo 2: Luckie Street in 2011, featuring Balzer Theater at Herren's

Balzer Theater at Herren's was renovated to employ many sustainable qualities and energy-efficient practices. A major donor challenged the design team and requested the project pursue LEED certification. Although original discussions leaned towards sustainable and energy efficient designs, the donor's challenge helped validate the environmental responsibility of rehabilitating a historical existing structure.

The theater highlights significant energy-efficient practices to improve occupant comfort while still maintaining low energy consumption. The building envelope features a white roof with additional insulation. Packaged rooftop units provide heating and cooling with seasonal energy-efficiency

History *Cont.*

ratings ranging from 11.9 to 16.6. The units are equipped with enthalpy-based economizers with barometric relief. The theater itself utilizes demand control ventilation to provide increased quantities of outdoor air during their theater events.



Photo 3: Theater Performance Space
Credit: Gabriel Benzur Photography, 2005

The north-facing storefront is a mix of historical and modern windows. The first floor windows utilize high-performance glazing and provide daylight for the entire first floor lobby that is connected to the main floor of the theater. The second floor windows were renovated with modern operable windows that are larger than the previous one. The windows increase daylight to the second floor administration offices while providing natural ventilation during seasonally appropriate times of the year.



Photo 4: Front Exterior of the Theater
Credit: Gabriel Benzur Photography, 2005

The theater also boasts another first for Atlanta. A 5,250-gallon rainwater collection tank was installed to collect roof rainwater and provide water to toilets. This was the first permitted and installed rainwater collection system intended for non-potable toilet use in Atlanta. Altogether, the Balzer Theater is 27% more efficient than ASHRAE Standard 90.1-1999's energy-efficiency standards.

The theater received LEED silver certification under LEED New Construction v2.1, earning 37 points. Urban Land Institute awarded the theater with the Project of Excellence award for

its adaptive reuse of a historical structure in an urban setting. More information about Theatrical Outfit and their performances at Balzer Theater can be found at <http://www.theatricaloutfit.org/>.

Noelle Sagan

Chapter Historian, Atlanta Chapter
nesagan@workingbuildings.com

This Atlanta Chapter Newsletter goes by email only to all Atlanta Chapter ASHRAE members along with all other ASHRAE members in our area and anyone else who asks. If you need a change in our email list, please notify our Chapter Secretary at secretary@ashraeatlanta.org

ASHRAE Learning Institute

Seminars & Courses at ASHRAE's Winter Conference in Orlando, FL



2 WAYS TO REGISTER

Internet: www.ashrae.org/orlandocourses

Phone: Call 1-800-527-4723 (US and Canada) or 404-636-8400 (worldwide)

Full-Day Professional Development Seminars

\$485/\$395 ASHRAE Member -- Earn 6 PDHs/AIA LUs or .6 CEUs

Commercial Building Energy Audits

Saturday, January 23, 2016 – 8:00 a.m. to 3:00 p.m.

Energy Modeling Best Practices and Applications

Tuesday, January 26, 2016 – 9:00 a.m. to 4:00 p.m.

Commissioning Process in New & Existing Buildings

Saturday, January 23, 2016 – 8:00 a.m. to 3:00 p.m.

Operations & Maintenance of High-Performance Buildings

Tuesday, January 26, 2016 – 9:00 a.m. to 4:00 p.m.

Designing HVAC Systems to Control Noise & Vibrations

Saturday, January 23, 2016 – 8:00 a.m. to 3:00 p.m.

Half-Day Short Courses

\$159/\$119 ASHRAE Member -- Earn 3 PDHs/AIA LUs or .3 CEUs

Laboratory Design: The Basics and Beyond

Sunday, January 24, 2016 – 3:30 p.m. to 6:30 p.m.

Advoiding IAQ Problems

Monday, January 25, 2016 – 2:45 p.m. to 5:45 p.m.

Troubleshooting Humidity Control Problems

Sunday, January 24, 2016 – 3:30 p.m. to 6:30 p.m.

Commissioning Process & ASHRAE Standard 202

Monday, January 25, 2016 – 2:45 p.m. to 5:45 p.m.

Understanding & Designing Dedicated Outdoor Air Systems

Sunday, January 24, 2016 – 3:30 p.m. to 6:30 p.m.

Complying with Standard 90.1-2013: HVAC/Mechanical

Monday, January 25, 2016 – 2:45 p.m. to 5:45 p.m.

Variable Refrigerant Flow System Design & Applications **NEW!**

Sunday, January 24, 2016 – 3:30 p.m. to 6:30 p.m.

Evaluation and Control of Legionella in Building Water Systems **NEW!**

Monday, January 25, 2016 – 2:45 p.m. to 5:45 p.m.

Air-to-Air Energy Recovery Applications: Best Practices

Monday, January 25, 2016 – 8:30 a.m. to 11:30 a.m.

Exceeding Standard 90.1-2013 to Meet LEED Requirements

Monday, January 26, 2016 – 9:00 a.m. to 12:00 p.m.

Applications of Standard 62.1-2013

Monday, January 25, 2016 – 8:30 a.m. to 11:30 a.m.

IT Equipment Design Evolution & Data Center Operation Optimization

Monday, January 26, 2016 – 9:00 a.m. to 12:00 p.m.

Building Demand Response & the Coming Smart Grid

Monday, January 25, 2016 – 8:30 a.m. to 11:30 a.m.

Designing High-Performance Healthcare HVAC

Monday, January 26, 2016 – 1:00 p.m. to 4:00 p.m.

Energy Management Best Practices

Monday, January 25, 2016 – 8:30 a.m. to 11:30 a.m.



ASHRAE HVAC Design Training

2 Courses, 5 Days of Intense Instruction

Atlanta • Halifax • Hong Kong • Houston

Kuala Lumpur • Miami • Minneapolis • Vancouver

HVAC Design: Level I – Essentials - Registration is \$1,264 (\$1,009 ASHRAE Member)

Gain practical skills and knowledge in designing and maintaining HVAC systems that can be put to immediate use. The training provides real-world examples of HVAC systems, including calculations of heating and cooling loads, ventilation and diffuser selection using the newly renovated ASHRAE Headquarters building as a living lab.

HVAC Design: Level II – Applications - Registration is \$854 (\$699 ASHRAE Member)

HVAC Design: Level II — Applications provides instruction on HVAC system design for experienced HVAC designers and those who complete the HVAC Design: Level I – Essentials training. The training provides information that allows practicing engineers and designers an opportunity to expand their exposure to HVAC systems design procedures for a better understanding of system options to save energy.

Visit www.ashrae.org/hvactraining to register.

ASHRAE Winter Conference

January 23–27, 2016

2016 ASHRAE Winter Conference
Jan. 23–27 | Orlando Hilton | Orlando, Fla.

*New Technical Program Tracks, Networking,
World's Largest HVAC&R Marketplace*

2016 AHR Expo
Jan. 25–27 | Orange Co.
Conv. Center | Orlando, Fla.

Venues are strategically located next to each other for easy access.

Sponsors

Who are the 2015-2016 ASHRAE Sponsors?



Diamond Level:



Platinum Level:



Let's thank these companies for their donations. If you would like to be a sponsor for the 2015-2016 calendar year, please click on the link for more information or contact Brian Justice (below is the email) <http://www.ashraeatlanta.org/event-850135>.

Brian Justice

Chapter Board of Governors, Atlanta Chapter

justicebrian@charter.net

This Atlanta Chapter Newsletter goes by email only to all Atlanta Chapter ASHRAE members along with all other ASHRAE members in our area and anyone else who asks. If you need a change in our email list, please notify our Chapter Secretary at secretary@ashraeatlanta.org



Member Promotion (MP)

November 2015

Dust off your heating equipment since winter started early this year. Well I hope that you are getting the most out of your benefits to take your career to the next level.

Let's extend a warm welcome to the following new members:

Joshua Julius	Alexandra Noelle Edinger
Matt McTier	Raj Shah
Mark Buckner	Jean Eduard Roux
Ashley R Staples	Scott Baker
Nicholas James Searle	Marek Zgliczynski

Career Tip!

This is a good time to think about your future and our benefits are ready to get you to the next level. Now, take advantage of benefits such as networking, technical meetings, books, social activities, golf outing, etc...

- Need help to tackle a difficult project? Then check this link:
<https://www.ashraexchange.org/forum.php?s=9d7bd3261c091332a077ea4b186b6852>
- Check out the latest Government affairs towards the HVAC industry.
<https://www.ashrae.org/government-affairs/grassroots-government-activities>

Sincerely,

Pedro Pacheco

MP Chair, Atlanta Chapter

membership@ashraeatlanta.org



ASHRAE Student UGA Branch

November 2015

The UGA Student ASHRAE Branch had a meeting on November 12th. Dr. Kristen Cetin (UGA Faculty) presented her work on the smart grid & smart buildings. Great turn out! Keep up the good work.



Irvin Sierra

Student Activities Chair, Atlanta Chapter

Irvin.sierra@lennoxind.com

This Atlanta Chapter Newsletter goes by email only to all Atlanta Chapter ASHRAE members along with all other ASHRAE members in our area and anyone else who asks. If you need a change in our email list, please notify our Chapter Secretary at secretary@ashraeatlanta.org



Red & Green Scene Holiday Party

December 3, 2015

RED & GREEN SCENE!

DECEMBER 3, 2015
 200 Peachtree | Six to Ten PM
 ATLANTA, GEORGIA

This is an elegant, festive holiday event and many get into the spirit of the season. Use this as an opportunity to get swanky and chic! In our new venue, 200 Peachtree provides an elegance of a bygone era so use this as a chance to dress to impress!

Enjoy the Laura Coyle Jazz Band!

Register Today!
www.redandgreenscene.com

Thank you to our generous sponsors!

Diamond Level Sponsor



Hosted By



Gold Level Sponsors



Media Sponsor

Interiors

Silver Level Sponsors





Scholarships Available – Apply Today!

Through its scholarships, ASHRAE seeks to motivate students and prospective students worldwide to pursue an engineering or technology career in the HVAC&R field. The Society's Scholarship Program also serves the public interest by aiding in the education of men and women to become qualified to practice as engineers in HVAC&R. ASHRAE has 28 scholarships available for the 2015-16 school year, for high school seniors entering college through senior undergraduate engineering students and engineering technology students. ASHRAE is seeking your assistance in making student members aware of this financial assistance.

- * 8 regional/chapter and university-specific scholarships — \$3,000 to \$5,000 each. Now accepting applications!
- * 12 undergraduate engineering scholarships — \$3,000 to \$10,000 each. Now accepting applications!
- * 4 high school senior scholarships — \$3,000 each
- * 4 engineering technology scholarships — \$5,000 each

Qualified students are encouraged to apply online:

www.ashrae.org/scholarships

Annual Application Deadlines:

December 1st for Undergraduate Engineering, Regional and University-specific Scholarships

May 1st for Engineering Technology and High School Senior Scholarships

Scholarships are awarded for the academic year following the application deadline beginning with the fall semester. For a list of available scholarships, complete eligibility requirements, and an application, visit www.ashrae.org/scholarships



Are you missing out?

Don't miss out on the latest ASHRAE publications! For more information, visit the Resources and Publications page: www.ashrae.org/resources--publications

ASHRAE JOURNAL



Most college science buildings consume a lot of energy. But, the Davis Building at the University of Findlay has a site EUI of only 64

kBtu/ft², which is significantly lower than most similar buildings that include labs with many fume hoods. This issue also features articles about when adding more fan power can be a good thing, the future of residential construction and a side-by-side comparison of VAV vs. radiant.

[Learn More >](#)

HPB MAGAZINE



Learn how the Federal Center South Building 1202 fosters a culture of collaboration, while the Haywood

Community College Creative Arts Building welcomes artists with open, daylit spaces that maximize passive strategies to reduce energy use. The SIERR Building at McKinstry Station demonstrates that even a nearly condemned building can be transformed into a high performing, energy-efficient office.

[Learn More >](#)

PUBLICATIONS CATALOG



[Interactive Catalog](#)

[Downloadable Catalog \(PDF\)](#)

ASHRAE TERMINOLOGY



Explore this new free resource, a comprehensive online glossary of more than 3700 terms related to the

built environment, with a focus on HVAC&R terms. Learn more at www.ashrae.org/ASHRAETerms



How Do I Join ASHRAE?

1. Visit <http://www.ashraeatlanta.org/> to start the process
2. Click "Membership" on the horizontal menu bar
3. On the pull down menu, click "Join"
4. Enter your email address in the box "Verify your E-mail status"
5. A prospective member will then be directed to enter his or her email information. As a new member, your address will not be recognized, and you will be invited to "Register Now".
6. After you complete registration, you will be directed to the Individual Information page where you can finally select "Join ASHRAE"!



Convenient and Useful ASHRAE Links

Again this year, our use of the Internet to further embrace our goal of Modeling a Sustainable World will be continued. Please use the web sites listed below:

1. RSVP and prepay for each event through the Atlanta ASHRAE <http://www.ashraeatlanta.org/>. For events where meals are served, you must at least RSVP to ensure that there will be a meal for you. We encourage you to prepay, as this will speed your way through the check-in process.
2. Pay your Chapter dues of \$40 per year directly to the chapter: <http://www.ashraeatlanta.org/Membership>. These dues are in addition to your Society dues and help fund the Chapter's programs and outreach.
3. Donate to ASHRAE Research Promotion. We have a fundraising goal of \$44,000 this year, so please do what you can to help fund ASHRAE research. Donate here: <http://www.ashraeatlanta.org/Default.aspx?pageId=748082>
4. Join the "ASHRAE Atlanta Chapter" group on LinkedIn at <http://www.linkedin.com/>.
5. Access the Product Directory online at the Atlanta ASHRAE website. Please note that this feature is in the process of being updated.



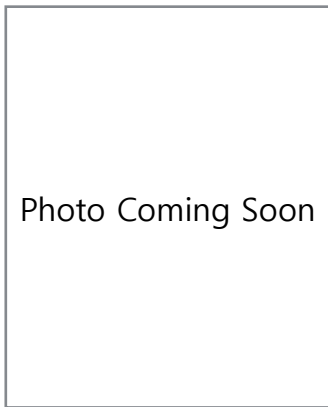
2015–2016 Chapter Officers



Nick Kassanis – Treasurer

treasurer@ashraeatlanta.org

Nick is currently a Commissioning Authority and Energy Modeling Consultant at Sustainable Investment Group (SIG). He is the project manager for Commissioning, Retro-Commissioning and ASHRAE Level I&II Energy Audit projects all over the country in addition to heading up the Energy Modeling department. Nick is a graduate of Georgia Institute of Technology with a Bachelor of Science in Mechanical Engineering. He has been volunteering with ASHRAE since graduation, making his way through the Student Activities and Research Promotion chair positions.



Megan Tosh – Secretary

secretary@ashraeatlanta.org

Bio to follow



Browse Job Postings on Our Site

Did you know employers can post job opportunities on the Atlanta Chapter website for **FREE**?

As the professional society that serves as the major connection through all parts of the HVAC industry, it is important to the Atlanta ASHRAE Chapter to keep all members employed. Likewise, we are happy to assist employers in posting their job



Go to the following page on our site to browse the posted employment opportunities:
<http://ashraeatlanta.org/JobOpportunities>

A few of the most recent job postings:

- Assistant Manager of Standards - Codes
- Product Manager, Commercial Products @ Mitsubishi Cooling & Heating
- Energy Modeler
- Project Specialist — Commercial
- UGA — FMD is Hiring Engineers



Irvin Sierra, our Communications Chair invites you to connect with the ASHRAE Atlanta Chapter on networking social media

(Let's Connect)



www.linkedin.com/groups/ASHRAE-Atlanta-Chapter-2186496

www.facebook.com/ASHRAEAtlanta