

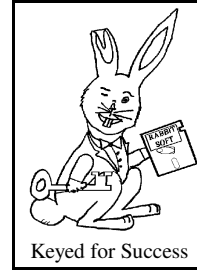
Rabbitsoft Presents



Keyed for Success!

Now you can master faster with

FasterMaster



Rabbitsoft

43853 Tranquility Ct.
Lancaster, CA. 93535-6115
(661)752-LOCK (5625)

Harvey Arkawy, A.A.

**Copyright © 2009 Rabbitsoft
All Rights Reserved.**

No part of this document may be copied or reproduced in any form or by any means without the prior written consent of Rabbitsoft.

Rabbitsoft has made every effort to ensure the accuracy of this document. However, Rabbitsoft makes no warranties with respect to this documentation and disclaims any implied warranties of merchantability or fitness for a particular purpose. The information in this document is subject to change without notice. Rabbitsoft assumes no responsibility for any errors that may appear in this document.

From time to time changes, upgrades or improvements may occur in the program. Such changes, upgrades or improvements may or may not be compatible with previous versions.

READ THE DOCUMENTATION!

Copy Protection

The FasterMaster program disk is not copy-protected. This does not mean that you can make unlimited copies of it. The FasterMaster program is protected by the copyright laws that pertain to computer software. It is illegal to make copies of the contents of the disk, except for your own backup, without written permission from Rabbitsoft. In particular, it is illegal to give a copy to another person or install it on more than one computer.

Trademarks

Windows is a registered trademark of Microsoft Corporation.

Table of Contents

Introduction	4
Acknowledgments	6
Installation	7
Update Users	7
Running the Program	8
The Main Menu	8
Generate a New System.	8
New Customer	9
Existing Customer	10
Reprint an Existing System	19
List Change Data	23
About	24
Comprehending the Standard Master keying Printout	25

were waiting for the user to assist him/her in producing a master key system incomparable with any other program.

Now, the DOS version of Ultimate Master 2000 has been replaced with Windows based **FasterMaster**. Now master keying can be made even easier for those locksmiths who, for one reason or another don't have the time to sit down and lay out a system, large or small. Once a system has been generated it can be displayed on the computer screen or printed. The locksmith can then identify which keys to cut, which cylinders to load, and how to load them, chamber by chamber. Then, by giving this information to the shop person, the service technician can cut keys by code and load the cylinders without the need of figuring out how. The program shows how to do it. Standard progression master keying includes; a list of all change keys, both usable and uncuttable, and a page or pages of pinning charts. Rotating constants includes; a page or pages of masters/sub-masters plus that of Standard master keying.

right corner of the page is also a second level master key. It passes the top row of all the change keys on the page, the AA 1, AA17, AA33, AA49, AA 5, AA21, AA37, AA53, AA 9, etc. The AAYZ 2 key passes all the second rows across the page, the AA 2, AA18, AA34, AA50, AA 6, AA22, AA38, AA54, AA, etc. On the bottom of the page is the AA PAGE MASTER KEY. This key will pass all sixty-four change keys on the page.

For every four pages (256 change keys, 64 change keys per page) for those locks that use a four cut matrix like Schlage, five pages (625 change keys, 125 change keys per page) for those locks that use a five cut matrix like Kwikset, and three pages (81 change keys, 27 change keys per page) there will be an additional page of first, second and third level master keys. These keys pass up through the pages. It will be identified with a 'W' after the page number. The AW 1 key passes the AA 1, AB 1, AC 1 and AD 1 and in Kwikset the AE 1 key. The AWX 1 key passes sixteen (twenty-five) change keys, AA 1 through AA 4, AB 1 through AB 4, AC 1 through AC 4 and AD 1 through AD 4 and in Kwikset the AE 1 through AE 5 and those numbered 5 in the previously mentioned groups. The AWYZ 2 key will pass all change keys on the second row of all four (five) rows on all four (five) pages before it. For every sixteen (25) pages of sixty-four (125) change keys there will be four (5) additional pages of various levels of master keys, all working up through the pages plus the last page of axis keys working up all previous pages. Each page of axis keys is identified with letters to help indicate what pages the keys are for, i.e. BWXY 3 key will work all keys in the B section (pages five through eight) pages BA through BD, column three. The characters XY 3 indicate the column, the B character indicates the B segment and the W indicating all B pages (BA, BB, BC and BD). Can you determine what keys the CWZ 16 key will pass? If you said those keys on pages CA through CD, last row of change keys numbered 16, 32, 48 and 64 you would have been right. Now if you have any problems with the information above DO NOT CONTINUE until you fully understand how the key ID helps locate what pages they are used on because after the twenty-five pages of change and axis keys, for a six pin system the change key ID goes to AAA through DDD. After sixty-four pages of change keys there will be an additional sixteen pages of axis keys with their identification like AVA This page of keys works all AAA, ABA, ACA, ADA pages. If the identification was BVW, this page of keys works all BAA through BDD pages, and if the identification was UAB, this page of keys works all AAB, BAB, CAB and DAB page of keys. Yes, it can be confusing, but the understanding of how it lays out is only as important as you need to make it.

Installation:

Place the CD-Rom into the drive and close the door. The Autostart should run the setup program. If not, then either press the "Windows" or the Start button. Then click on My Computer. Find the drive that contains the FasterMaster CD-Rom. Place the mouse cursor on it and then click the right mouse button. When the new window opens, click on Explore. When the Explore window opens, double click on Setup.

Note: Neither the setup program nor FasterMaster makes any changes to the registry. Therefore, FasterMaster will not be listed in the "Add or Remove Programs" folder. To remove the program, just delete it and every reference to it including any icons.

Update Users:

Please Note: FasterMaster is not compatible with any version of Ultimate Master. In order to maintain your existing software, FasterMaster is installed into a different folder.

About:

The About box tells you all that you need to know about the program and Rabbitsoft.

Quit:

Good bye.

Chow.

Au revoir.

Goed tot ziens

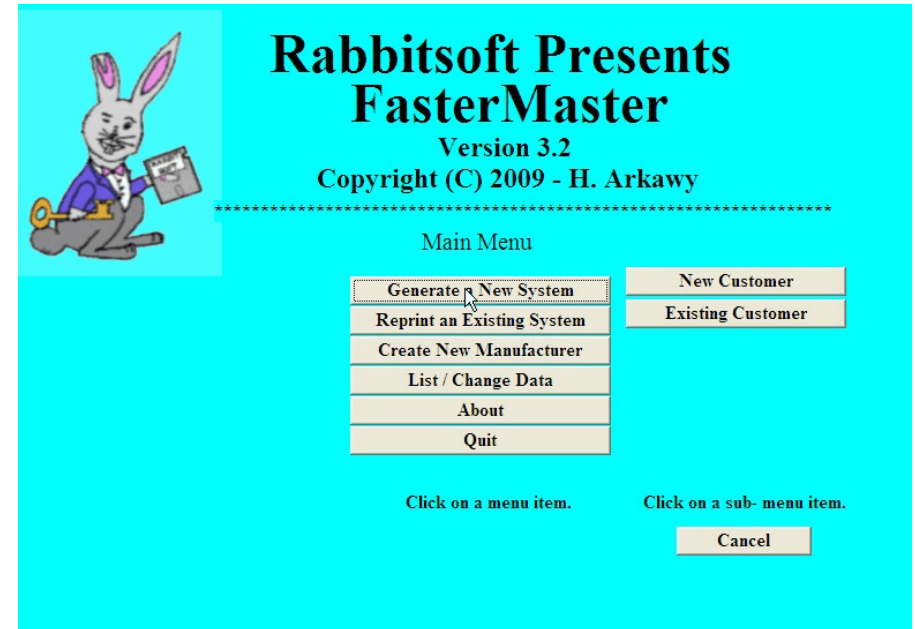
Auf Wiedersehen

Arrivederci

Adiós

Hasta la vista, Baby.

Get the message?



To create a system for a new customer, click on the “New Customer” button. Then fill in the blanks.

Customer's Data
Customer No. 1

Customer's Name:

Point of Contact:

Address 1:

Address 2:

Address 3:

Address 4:

Postal code:

Telephone:

Fax Number:

Manufacturer's Data

Manufacturer's Name:

Minimum Chambers for this Mfg.:

Maximum Chambers for the Mfg.:

Shallowest Cut:

Deepest Cut:

Maximum Adjacent Cut:

Step Increment:

Interchangeable Core:

Control Factor:

Stack Total:

Control Chambers:

1 2 3 4 5 6 7
Chambers

The Control Factor must be between 1 and 30. Yes 30. Room for growth. The Stack Total must be between 6 and 30. Yes 30 for the same reason. The Control Chambers is for you to indicate which chamber is for the control sleeve. There must be at least one chamber for use by the control sleeve. When done, click the OK button and the information will be added to the manufacturer's file.

You will next be present with the Manufacturer's Listing. To view the entire file, click on the down arrow as you did for the Customer's listing.

Manufacturer's Listing

To view the entire list, click on the down arrow. To choose an item, click on it. Then click OK.

Chose the Manufacturer that this system will use by highlighting it and then clicking the "OK" button.

Manufacturer's Listing

Schlage
 Schlage
 Best/Falcon/Arrow Interchangeable Core
 Corbin/Russwin System 70 Removeable Core
 Kwikset 1-6 Step 1
 Corbin 1-10
 Kwikset 1-7 Step 1
 Master Padlock
 Weslock

Choose the system by clicking on it and then the OK button.

Master Key System for My Customer
Manufacturer = Schlage

Standard Master Keying Rotating Constants

How Many Chambers?

What is the Master Key? * <-Create a Random Master.

What is the Control Key?

What is the Order of Progression?

Chambers

	1	2	3	4	5	6	7
1	7	0	7	2	6	9	
2	5	2	9	4	8	1	
3	3	4	1	6	0	3	
4	-	6	3	8	2	5	

The Change Key Matrix =

Do you want a quick pinning chart?

Do you want all the pinning charts?

OK Cancel

The master key system window will open showing the system that was chosen. You will notice that all fields have been deactivated except for the “Do you want a quick pinning chart?” and “Do you want the pinning charts?” check boxes. There can not be any changes made to this master key system as this is a “Reprint an Existing System” function. Click the OK button to continue to the preview window.

The second input is for you to choose the quantity of chambers.

How Many Chambers?

To view all the choices, use the scroll button and then highlight the number for the quantity of chambers.

What is the Master Key?

* <-Create a Random Master.

The third input is for you to enter the master key. The program will not permit you to enter a number that is outside of the M.A.C.S or less than the shallowest or deepest cuts. If you can't make up your mind, click on the star and the program will create a master key for you.

What is the Master Key?

Information

The Number you entered exceeds the Maximum Adjacent Cuts for this Manufacturer.

OK

If the system is either removeable or interchangeable core, the input field as well as the prompt for the control key will not be greyed out and you will be prompted for the control key. The control key *can not* be the same as the master.

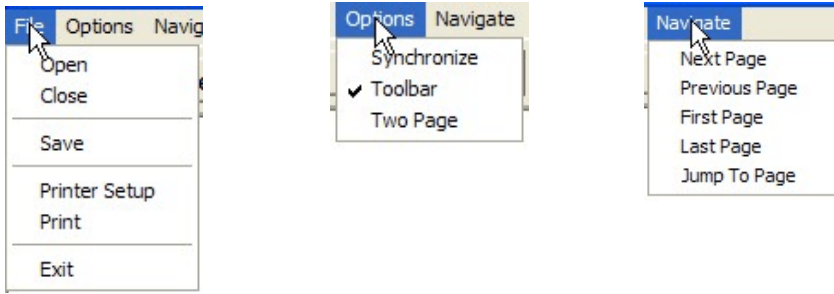
The next input is for the Order of Progression.

What is the Order of Progression?

This box requires different information based upon the type of system.

Standard Master Keying : The inputs permitted are the numbers 1 through 7 and the letter “C”. The numbers represent the Order of Progression. If you are creating a five pin system, the program will not permit you to enter a “6” or a “7.” If you enter 5 4 3 2 1, progression will be from the right to the

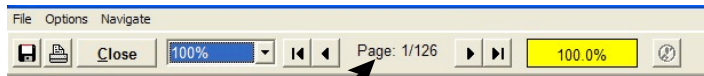
The top row contains three options: File, Options and Navigate.



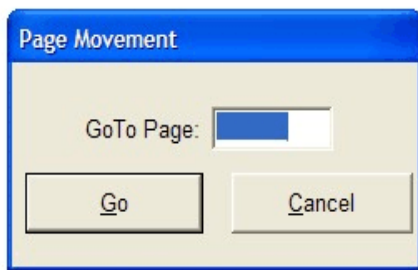
It is suggested that you *not* use the Open or Save options to store your data but to print the data to a PDF printer. The reason is that in order to get to the preview window, you *must* re-run a previous system. The Close is used to close the active page if the Two Page option is active.

In the Options menu, there are three items: Synchronize, Toolbar and Two Page. If you are viewing two pages, the Synchronize will scroll both pages when using the slide bar. In Two Page viewing, you can open a previously saved file and compare the two, side by side.

The Navigate menu is self explanatory. It isn't needed if the Toolbar is active.



If you double click here ————— You will be presented with a box to permit you to go to a specific page.

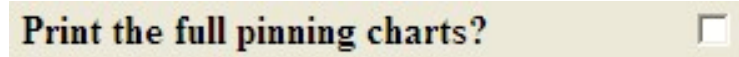


```
Schlage 6 Pin Master key system for:
My Customer
The Great Grand Master key = 260795
Order of Progression = 6 5 4 3 2 1

Matrix
  4 8 2 9 1 7
  6 0 4 1 3 9
  8 2 6 3 5 1
  0 4 8 5 7 3
```

	4	8	2	9	1	7			
MP=	2	MP=	2	MP=	2	MP=	8	MP=	2
BP=	2	BP=	6	BP=	0	BP=	7	BP=	1
	6	0	4	1	3	9			
MP=	4	MP=	6	MP=	4	MP=	6	MP=	4
BP=	2	BP=	0	BP=	0	BP=	1	BP=	3
	8	2	6	3	5	1			
MP=	6	MP=	4	MP=	6	MP=	4	MP=	4
BP=	2	BP=	2	BP=	0	BP=	3	BP=	5
	0	4	8	5	7	3			
MP=	2	MP=	2	MP=	8	MP=	2	MP=	2
BP=	0	BP=	4	BP=	0	BP=	5	BP=	7

A quick pinning chart.



The next input is again a check box. If you want the program to generate the complete Pinning Charts then click inside the box or the description to place a check mark in the box.

To the right of the check boxes is the Change key Matrix.

The Change Key Matrix =

Chambers						
1	2	3	4	5	6	7
3	0	7	2	6	9	
5	2	9	4	8	1	
7	4	1	6	0	3	
9	6	3	8	2	5	

Print the change keys?
 Print the quick pinning chart?
 Print the full pinning charts?

You can change the matrix by using the mouse pointer.

Rabbitsoft Software License Agreement

This document is a legal agreement between you, the Licensee and Rabbitsoft. By using this program, you are agreeing to become bound by the terms of this agreement. If you do not agree to the terms of this agreement, promptly return the disk package and the other items that are part of this product in their original package, with your payment receipt to your point of purchase for a refund.

In consideration of payment of the License Fee, which is a part of the price evidenced by the receipt, Rabbitsoft grants to the Licensee a nonexclusive right, without the right to sub-license, to use this copy of this Rabbitsoft Software on a single Computer. Rabbitsoft reserves all rights not expressly granted, and retains title and ownership of the Software, including all subsequent copies in any media. This Software and the accompanying written materials are copyrighted. You may copy the Software solely for backup purposes; all other copying of the Software or the written materials is expressly forbidden.

As the only warranty under this Agreement, and in the absence of accident, abuse or misapplication, Rabbitsoft warrants, to the original Licensee only, that the disk on which the Software is recorded is free from defects in materials and workmanship under normal use and service for a period of ninety (90) days from the date of purchase as evidenced by a copy of the payment receipt. Rabbitsoft's only obligation under this Agreement is, at Rabbitsoft's option, to either (a) return payment as evidenced by a copy of the Receipt or (b) replace the disk that does not meet Rabbitsoft's limited warranty and which is returned to Rabbitsoft with a copy of the receipt. THIS WARRANTY GIVES YOU LIMITED, SPECIFIC LEGAL RIGHTS. YOU MAY HAVE OTHER RIGHTS, WHICH VARY FROM STATE TO STATE.

The Software and accompanying written materials are provided "AS IS" without warranty of any kind including the implied warranties of merchantability and fitness for a particular purpose, even if Rabbitsoft has been advised of that purpose. Rabbitsoft specifically does not warrant that the operation of the Software will be liable for any direct, indirect, consequential or incidental damages arising out of the use of or inability to use such product even if Rabbitsoft has been advised of the possibility of such damages. Some States do not allow the exclusion or limitation of liability for consequential or incidental damages, so the above limitation may not apply.

Introduction

In 1978, not too many locksmiths were using computers in their business' to keep track of anything let alone the design and development of master key systems. In those days the Radio Shack® TRS-80® seemed to be the most popular machine. Then the Apple][® series made a substantial showing in sales. Some locksmiths saw the forest through the trees and purchased their first computer in hopes of using it to improve their business. Such is the case with the author of **Ultimate Master 2000**. With the prodding and pushing of employees to expand the horizon of the business, he reluctantly invested in a computer system that was to become the envy of many (not all) locksmiths who knew him. The computer virtually eliminated the need for a bookkeeper as *all* business records including inventory, and California payroll was maintained by the computer. After being shown a printout of a master key system generated by an IBM® mainframe using punch cards, the author decided to attempt to write his own program to replicate the wonderful system he had seen. Because the computer that he was using only had 64k bytes of RAM a program was written that just generated Schlage® systems. That program became the basis for other manufacturers systems. The author then started marketing the printouts to other locksmiths within his area. The Schlage® program was eventually made available for market and some sold. Many locksmiths requested that the program be written for the IBM-PC® and the Apple Macintosh® but those requests only cost money as it is necessary to purchase those computers in order to write software for them.

In 1987, the author purchased his first IBM® compatible and proceeded to rewrite the program. All of his associates made recommendations as to what the program should do and how it should look and feel. Their comments were most helpful in creating a master key program that was user friendly and performed as advertised. It became a success locally and some locksmiths even returned their other master keying programs written by others realizing **ULTIMATE MASTER** assisted them in creating the types of master key systems they needed to provide a better service to their customers.

With each comment and request came a more useful program. Then in early 1991, the decision to do a total rewrite of the program was made. The use of a mouse, menus that can be returned to by pressing the *Escape* key without having to start over, regenerating a customer's master key system without the need to reenter the data and being able to display each page of the master key system on screen without the *need* of printing it. All these things and more

Acknowledgments

Rabbitsoft would like to express our deepest gratitude to the support team at SCT Associates, Inc. of Oak Lawn, Illinois whose gracious and unending support helped in the completion of this project. We would like to specifically thank Steve Tyrakowski who provided us with Ace Reports at a special “Holiday” price, which permitted us to include its functionality to our work. Thank you gentlemen all for your support!

The more important, the more time needed.

The uncuttable or unusable keys, those keys flagged with a '*', are those keys that have adjacent cuts too far apart to be cut because the slope of the deeper cut eliminates too much of the root of the shallower cut, and/or with some removable core, the change key is not compatible with the control key; a 0 in the control key with a 9 in the change key in the same cell is not compatible as in FALCON and BEST which do not use a number one master pin.

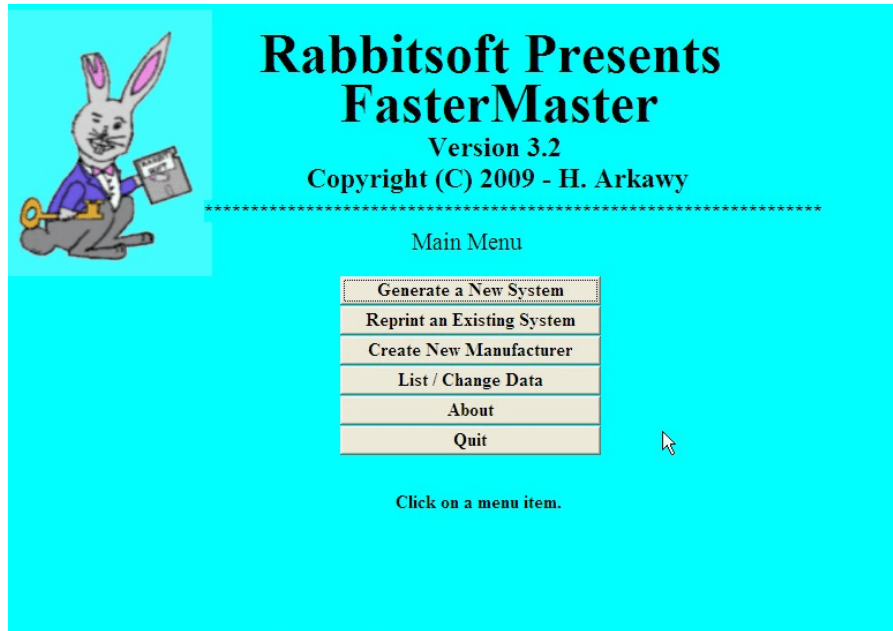
If you have any questions about the system or how any of the keys fit into it, call or write to:

Harvey Arkawy
Rabbitsoft
43853 Tranquility Ct.
Lancaster, CA. 93535-6115
(661)752-LOCK (5625)
Mon.-Sun. 10:00am-8:00pm Pacific Time.

Running the Program

The Main Menu

The **Main Menu** looks like this:



Generate a New System.

Click on the “Generate a New System” button. You will be presented with two choices: “New Customer” and “Existing Customer” as shown on the next page.

Comprehending the Standard Master keying Printout.

What the standard progression printout means will be discussed in this section...so if you have not as yet run a printout, run one now. Run Schlage, five pin, using 1 1 1 1 1 as the master key, 5 4 3 2 1 as the order of progression, and needing *All* change key, and change keys only. When the printer is finished printing, remove the printout from the printer.

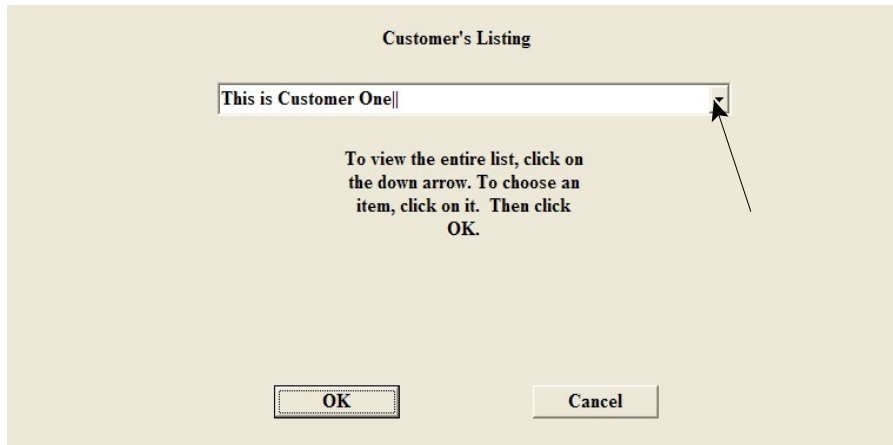
Now you will see on the printout the layout of the system. The top row shows...

AAXY 1 33311 AAXY 2 33511 AAXY 3 33711 AAXY 4 *33911

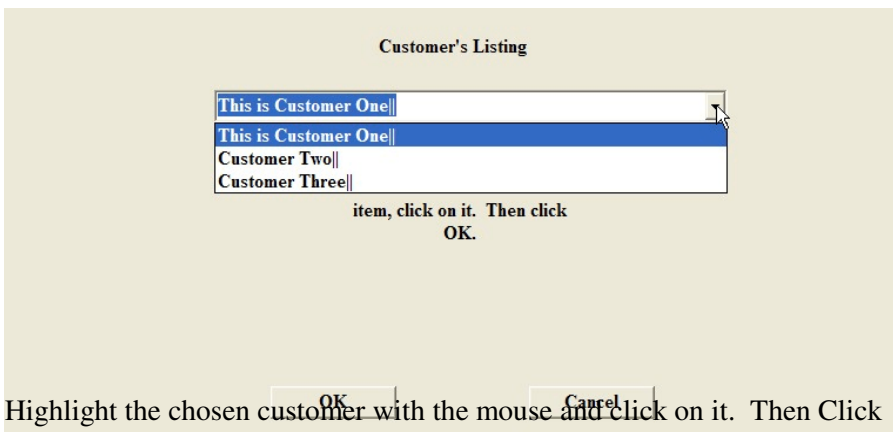
AAXY 1 is a second level master key. It will pass all change keys below it from AA 1 to AA16. AAXY 2 is a second level master key. It will pass all change keys below it from AA17 to AA32. AAXY 3 is a second level master key. It will pass all change keys below it from AA33 to AA48. AAXY 4 is also a second level master keys and like the others would pass the change keys below it except that it is uncuttable. There is a 9 depth next to a 1. AAX 1 is a first level master key. It will pass the four change keys just below it (AA 1 to AA 4). AAX 2 passes AA 5 to AA 8, AAX 3 passes AA 9 to AA12, etc. down and across the page. At the bottom of the page are additional first level master keys. They are AAY 1 through AAY16. AAY 1 key passes the top key of each of the four groups directly above it, the AA 1, AA 5, AA 9 and the AA13 keys. AAY 2 passes AA 2, AA 6, AA and AA14. Can you determine which group of change keys the AAY12 key passes? It will pass the AA36, AA40, AA44 and AA48 change keys. Did you guess right? If you did, the rest of the system is just as easy, if not then re-read this page, until you can see how these keys fit into the system. Now going one step further, the AAZ 1 key is a first level master key. It passes the four change keys directly to its left. The AA1, AA17, AA33 and the AA49. The AAZ 2 key works the same way, to its left, as do all the AAZ keys do, down the page. The next second level master key to discuss is the AAXZ 1 key. You will find it under the page number directly to the right of the AAZ 1 key. This key will pass the sixteen change keys to its left. The AA 1 to AA 4, AA17 to AA20, AA33 to AA36 and AA49 to AA52. The AAXZ 2 key works just like the AAXZ 1 key does, the sixteen change keys to its left, so on down the page. The AAYZ 1 key which is in the bottom

The only two fields that must contain data is the “Customer’s Name” and the “Point of Contact.” The other fields may be left blank. To cancel, click on the “Cancel” button and you will be returned to the Main Menu. To clear all fields and start over, click on the “Clear All” button. When all information is complete, click on the “OK” button to update the Customer file.

To create a new system for an existing customer, click on the “Existing Customer.” The following window will open and provide you with the listing of your current customers.



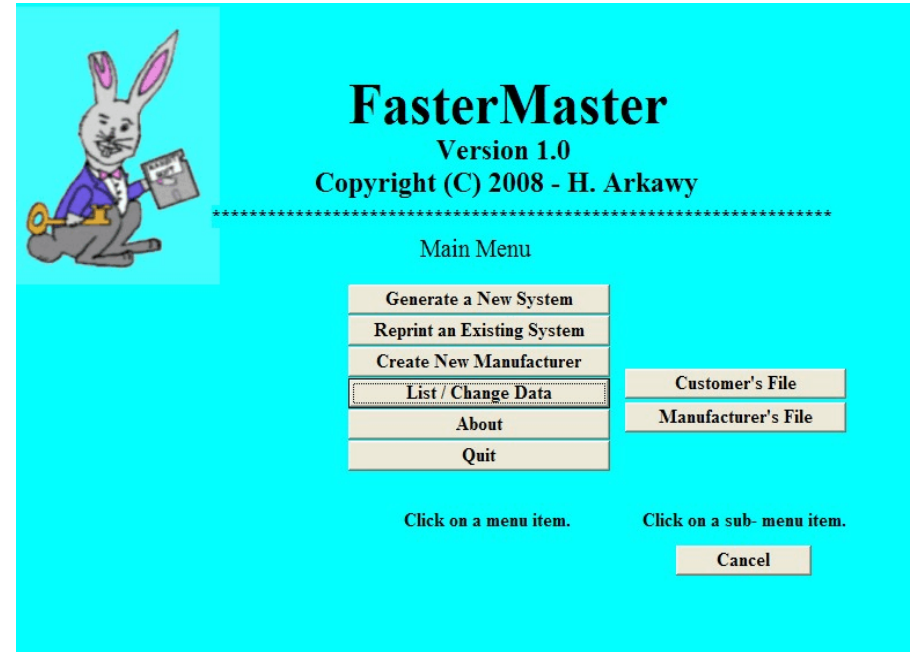
To view the entire list, click on the arrow.



Highlight the chosen customer with the mouse and click on it. Then Click the “OK” button.

List Change Data:

This choice will permit you to modify a customer or manufacturer. After clicking on this button, you will be presented with two additional choices.



Make your choice by clicking on the appropriate button.

The list box for customers or manufacturers will be presented for you to choose. When your choice is entered and the OK button has been clicked upon, the customer or manufacturer entry window will be displayed with the data fields filled in. You may make any changes needed and when finished, press the OK button. The file will be updated.

PLEASE NOTE: While in the List/Change mode, if you press the “Clear All” button, all fields will be cleared with the exception of the Name field. The program will insert the word “Delete.” If you click OK at this time, the program will inform you that you are about to delete this record. If you accept this action, the customer or manufacturer will be deleted. In the case that it is a customer that is being deleted, all master key systems for this customer will also be deleted.

The next window is for you to enter the specifics for your master key system.

Standard Master Keying

The top two lines remind you for whom the system is for, as well as the manufacturer that you have chosen.

Rotating Constants

The default system is “Standard Master Keying.” By clicking on the “Rotating Constants” button, the program will generate a Rotating Constant system. It will also provide a box for you to enter the Starting Character for the system identification.

Create a New Manufacturer:

One of the benefits of FasterMaster over some of the other master keying programs is the ability to create a new manufacturer. To create a new manufacturer, click on the “Create New Manufacturer” button. The following window will open.

The Manufacturer’s Name field is a maximum of 40 characters. The Minimum Chambers for this Mfg. field has a minimum of 3. The Maximum Chambers for the Mfg. field has a maximum of 7. The Shallowest Cut field has a minimum of 0 and a maximum of 1. The Deepest Cut field has a minimum of 5 and a maximum of 10. The Maximum Adjacent Cut (M.A.C.S) must be between 3 and 9. There are a few manufacturer’s locks that do not have a M.A.C.S., such as the Best A2, A3 and A4 systems. In those situations, you may enter a zero (0) and the program will ignore the M.A.C.S. The Step Increment must be between 1 and 4. If this manufacturer is interchangeable/removeable core, then click on the check box to reveal additional fields.

left (the “1” progresses first.) If you change the “4” to a “C” so that chamber 2 will always match the master, the program will automatically change the order to 4 C 3 2 1.

Rotating Constants: The inputs permitted are the letters “M”, “S”, “C” and “R”. They stand for “M”aster, “S”ubmaster, “C”onstant and “R”otate. There **must** be at least three chambers with an “R”. If not, the program will notify you of your error. Also, if you have at least one “S” there **must be** at least one “M”. How can you have submasters when there aren’t any masters?

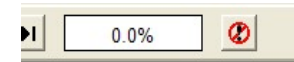
Print the change keys?

The next option’s input is a check box. If you do not want to print the change keys, then simply click inside the box or the description to remove the check mark. Without the check mark, there will be no change keys printed. **Please note:** *If all three check boxes are empty when you click the OK button, the program will replace the check in this box and wait for you to click the OK button again.*

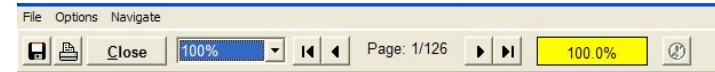
Do you want a quick pinning chart?

The next option’s input is also a check box. You may click inside the box or the description to place a check mark in the box. This option will create a grid of the change key matrix and place the pinning for all of the possible change key cuts. A sample is on the next page.

You may notice that while the pages are being generated the icon to the right of the page completion box has a red circle around the exclamation point (!).



By clicking this button, you can stop the program from continuing to generate pages. Some reports could generate well over 2000 pages if pinning charts is checked. When all pages are generated the red circle will gray and the box to the left will go yellow and indicate that it the program is 100.0% finished.

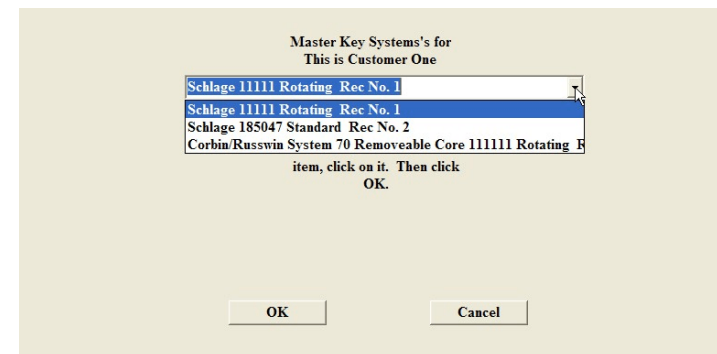


You may print the report to any printer that is attached to your computer including printers that are attached to a network.

Once again, it is suggested that you print it to a PDF file first, that way you can password protect the file and then write it to CD and store it with your customer’s records.

Reprint an Existing System:

To reprint a master key system that has already been generated, click on the “Reprint and Existing System” button. The program will display the same window that was displayed for Generate a New System using an existing customer. Once the customer has been chosen, a similar window will display showing the master key systems for that customer.



Let's say that you want to modify the first chamber's matrix from 3,5,7,9 to 7,9,5,3. First place the mouse cursor on the 7.

Chambers

	1	2	3	4	5	6	7
The Change Key Matrix =	3	0	7	2	6	9	
Print the change keys? <input checked="" type="checkbox"/>	5	2	9	4	8	1	
Print the quick pinning chart? <input type="checkbox"/>	7	4	1	6	0	3	
Print the full pinning charts? <input type="checkbox"/>	9	6	3	8	2	5	

Hold down the left mouse button and drag the 7 so that it rests on top of the 3.

Chambers

	1	2	3	4	5	6	7
The Change Key Matrix =	7	0	7	2	6	9	
Print the change keys? <input checked="" type="checkbox"/>	9	2	9	4	8	1	
Print the quick pinning chart? <input type="checkbox"/>	3	4	1	6	0	3	
Print the full pinning charts? <input type="checkbox"/>	5	6	3	8	2	5	

Then release the mouse button. The two numbers will change positions. Repeat the process until the matrix has been changed to 7,9,5,3.

Chambers

	1	2	3	4	5	6	7
The Change Key Matrix =	7	0	7	2	6	9	
Print the change keys? <input checked="" type="checkbox"/>	9	2	9	4	8	1	
Print the quick pinning chart? <input type="checkbox"/>	3	4	1	6	0	3	
Print the full pinning charts? <input type="checkbox"/>	5	6	3	8	2	5	

To eliminate a cut, click on the cut and press the '-' (minus/dash) key.

Chambers

	1	2	3	4	5	6	7
The Change Key Matrix =	7	0	7	2	6	9	
Print the change keys? <input checked="" type="checkbox"/>	5	2	9	4	8	1	
Print the quick pinning chart? <input type="checkbox"/>	-	4	1	6	0	3	
Print the full pinning charts? <input type="checkbox"/>	-	6	3	8	2	5	

The cut will be replaced with the minus/dash and placed at the bottom of the list.

Changes can be made at any time prior to clicking on the "OK" button. Once you click on the "OK" button, the program will take you to the preview window.

The screenshot shows the 'Ace Viewer' application window. The title bar includes 'File Options Navigate'. The interface features a toolbar with icons for file operations and a 'Close' button. The main content area displays the following text:

```

Schlage 6 Pin Master key system for:
My Customer

The Great Grand Master key = 185047

Order of Progression = 6 5 4 3 2 1

Matrix
7 0 7 2 6 9
5 2 9 4 8 1
3 4 1 6 0 3
- 6 3 8 2 5
  
```

The upper part of the window contains important functions.