

NSU's Dr. Kiran C. Patel College of Osteopathic Medicine

D.O. PROGRAM



NOVA SOUTHEASTERN
UNIVERSITY

NSU
Florida

Health Professions Division | Students Entering 2021

Now Accepting Applications

nova.edu



NSU Doctor of Osteopathic
Medicine students help
people throughout the world
with their skills.



THE NSU EDGE

- low student-to-faculty ratio
- advanced patient simulation technology
- extensive resources
- clinical experience
- opportunities to aid urban and rural underserved populations
- interprofessional service-learning
- faculty and staff members who care about your success
- commitment to developing students of academic and clinical distinction
- track record for cultivating patient-focused leaders

TABLE OF CONTENTS

Message from the Dean	2
Osteopathic Medicine Overview	4
Course of Study	6
NSU-KPCOM Fast Facts	7
Curriculum Outline	8
Admissions Requirements	13
Application Procedures	14
Transfer Students	17
Tuition and Fees	18
Foreign Coursework	21
Tampa Bay, Florida	24
Message from the HPD Chancellor	26
Health Professions Division Fast Facts	27
Campus Maps	28
HPD Degree Programs	32
NSU Recognitions	36

MESSAGE FROM THE DEAN



Are you ready to pursue a career in one of the fastest-growing health professions disciplines in the country today?

Doctors of osteopathic medicine (D.O.s) are educated to consider the health of the whole person and use their minds, senses, and hands to help diagnose and treat their patients. Because of this, the profession's popularity continues to increase. One fourth of all current students studying medicine are enrolled in osteopathic medicine programs. While today's D.O.s remain on the cutting-edge of research and technology, they are equally as committed to being compassionate healers who listen carefully to their patients. Instead of just treating specific symptoms or illnesses, they regard the body as an integrated whole and focus on preventive care to maximize the health of each patient they treat.

As a student at NSU's Dr. Kiran C. Patel College of Osteopathic Medicine (KPCOM), you will have an opportunity to integrate the study of health and disease, combining scientific knowledge and humanism at the university's Fort Lauderdale/Davie Campus, or at our additional site at the Tampa Bay Regional Campus. You will also be able to participate in clinical settings within the first month of your inaugural semester, allowing you to gain immediate access to the real world of medicine.

While breakthrough advances in medical technology present more effective solutions than ever before, new threats to public health and diverse populations continue to emerge. The college's curriculum addresses the clinical aspects and pathophysiology of diseases and disorders of each system. Emphasis also is placed on learning the principles and practice of osteopathic medicine, including manipulation and a holistic approach to the patient.

Because the medical care model of today is significantly different than it was years ago, health care providers from different disciplines are frequently required to work collaboratively to effectively treat a patient. As a result, NSU's KPCOM endorses and emphasizes an interprofessional model of patient care delivery by a health care team integrated across the various disciplines.

As we explore the next chapter of medical education here at NSU's KPCOM, we are committed to pursuing a pathway that provides our students with the most comprehensive, cutting-edge, and compassionate learning experience possible.

A handwritten signature in blue ink that reads "Elaine M. Wallace D.O." The signature is fluid and cursive.

Elaine M. Wallace, D.O., M.S.⁴
Dean, Dr. Kiran C. Patel College of
Osteopathic Medicine



“As a student at NSU-KPCOM, you will have an opportunity to integrate the study of health and disease, combining scientific knowledge and humanism.”

—Elaine M. Wallace

OSTEOPATHIC MEDICINE OVERVIEW

DR. KIRAN C. PATEL COLLEGE OF OSTEOPATHIC MEDICINE PROGRAMS

- Doctor of Osteopathic Medicine
- Master of Public Health
- Master of Science in Biomedical Informatics
- Master of Science in Disaster and Emergency Management
- Master of Science in Medical Education
- Master of Science in Nutrition
- Bachelor of Science in Public Health
- Bachelor of Science in Human Nutrition
- Graduate Certificate in Emergency Medicine
- Graduate Certificate in Functional Nutrition and Herbal Therapy
- Graduate Certificate in Health Education
- Graduate Certificate in Health Professions Preparation
- Graduate Certificate in Medical Informatics
- Graduate Certificate in Public Health
- Graduate Certificate in Public Health Informatics
- Graduate Certificate in Social Medicine

For the osteopathic physician, a patient is much more than a presenting symptom. Each person is a complete human being to be evaluated with consideration of his or her entire background. The osteopathic medical model is comprehensive and holistic and demands that its practitioners possess both humanitarian and intellectual qualities. It encourages a broad educational background in both the sciences and the humanities.

Two types of physicians are licensed to practice medicine in all 50 states—the Doctor of Osteopathic Medicine (D.O.) and the Doctor of Medicine (M.D.). While both types of physicians are trained in all aspects of patient care, D.O.s emphasize a distinctly holistic approach to medicine.

Osteopathic medicine recognizes the relationship between physical structure (musculoskeletal) and organic function.

Osteopathic principles teach physicians to view the human body as an interdependent unit rather than an assortment of separate parts and systems. An osteopathic medical education

- emphasizes producing excellent, compassionate physicians who are lifelong learners able to practice in any specialty
- produces a higher percentage of physicians who practice primarily in rural and urban underserved areas

All medical, surgical, and obstetrical specialties are represented within the profession, and NSU's program includes rotations in these specialties. Experiences serving a variety of populations (listed below) make the program unique.

- rural
- medically underserved
- international
- urban
- minority
- indigent
- geriatric

A dynamic career awaits committed individuals.

PURPOSE OF NSU-KPCOM

NSU-KPCOM provides learner-centered education, both nationally and internationally, for osteopathic medical students, postgraduate trainees, physicians, and other professionals.

Through its interprofessional programs, the college prepares competent and compassionate lifelong learners; supports research, scholarly activity, and community service; and advocates for the health and welfare of diverse populations, including the medically underserved.



PROVISIONAL ACCEPTANCE

Students are provisionally admitted to a degree-seeking program based on a review of unofficial transcripts or other specific program admission requirements. However, this admission includes a condition that final and official transcripts, documents, and requirements must be received within 90 calendar days from matriculation. If these final and official transcripts, documents, and/or requirements are not received by that time, the student will not be allowed to continue class attendance. Financial aid will not be disbursed to a provisional/conditional student until he or she has been fully admitted as a regular student (all admissions requirements have been approved by the college/program admissions office). Students who have an unpaid balance 30 days from the start of the term will be assessed a \$100 late fee.

COURSE OF STUDY

NSU's Doctor of Osteopathic Medicine (D.O.) is a professional degree that requires four years of professional study.

Our innovative curriculum is

- designed to train physicians with an emphasis on producing excellent, compassionate physicians who are lifelong learners.
- based on successful academic models that are carefully developed and integrated
- built to provide robust academic and clinical training that prepares students for the real world of medicine

Did You Know?

A dynamic faculty of nearly 150 full-time and 1,200 adjunct professors deliver pacesetter curricula.

NSU program graduates leave with an enhanced competitive status as highly desired candidates for postdoctoral residencies. For further information about graduate placement and first-time pass rates for the COMLEX exam scores, please visit our website at osteopathic.nova.edu/do/residency-board-scores.html.

A notable aspect of our program is a three-month clinical rotation at a rural setting where many residents have little access to health care. Students learn to treat various cultural and ethnic groups whose lifestyles and attitudes toward health care may differ from those seen in more traditional training sites.

The college receives more than 7,000 completed AACOMAS applications a year, from which only 380 students are chosen for both campuses. Once accepted, students are given the option to choose their desired campus location until all available seats have been filled. Students have varied backgrounds, and while many enter the college directly from an undergraduate program, others come from graduate programs or successful careers.

The Committee on Admissions recommends applicants to the dean on the basis of demonstrated academic excellence, leadership, compassion, and commitment to the principles of the osteopathic medical profession.

OSTEOPATHIC MEDICINE PROGRAM PURPOSE

NSU's Doctor of Osteopathic Medicine Program is dedicated to student-centered osteopathic medical education to produce exemplary osteopathic physicians known for competent and compassionate care.

NSU-KPCOM FAST FACTS

- The college ranks as the 10th-largest in terms of total enrollment among the 35 accredited colleges of osteopathic medicine in the United States.
- The student body is approximately 53 percent male and 47 percent female, and ranges in age from 20 to 47.
- Ethnic minority groups represent 46 percent of the student body.
- Fifty percent of students are Florida residents.
- Accepted applicants have an average GPA of 3.6 and MCAT scores of 504.
- In 2016, NSU-KPCOM submitted 33 grant proposals and received \$9.9 million in research funding and \$15.1 million in teaching/training support.
- The college is home to five prestigious centers and institutes. They are the
 - Area Health Education Centers
 - Institute for Disaster and Emergency Preparedness
 - Florida Coastal Geriatric Resources, Education, and Training Center
 - Lifelong Learning Institute
 - Institute for Neuro-Immune Medicine

Did You Know?

In 2017, the Patel Family Foundation pledged a \$200-million commitment to the university. This transformational gift by Drs. Kiran C. and Pallavi Patel includes a facilities expansion and student scholarships. The commitment has further fueled NSU-KPCOM's leadership and efforts in global medical outreach and service to the world's underserved populations. In honor of this gift, the college was renamed the Dr. Kiran C. Patel College of Osteopathic Medicine.



CURRICULUM OUTLINE

ACADEMIC YEAR 2020–2021

First Year

FALL BLOCKS 1 AND 2 COURSES

Medical Biochemistry

Gross Anatomy

Medical Histology

Medical Physiology

Medical Microbiology

Physical Diagnosis I

Osteopathic Principles and Practice I

Health Care Provider BLS and First Aid

WINTER BLOCK 3 COURSES

Fundamentals of Pathology

Fundamentals of Pharmacology

Basics of Nutrition

Foundations of Research

WINTER BLOCK 4 COURSES

Principles of Radiology

Medical Immunology

Integumentary System

Hematopoietic and Lymphoreticular System

Medical Procedures I

WINTER BLOCK 5A COURSES

Respiratory System

FULL WINTER SEMESTER COURSES

Physical Diagnosis II

Student Wellness

Osteopathic Principles and Practice II

SUMMER BLOCK 5B COURSES

Cardiovascular System

Tobacco Use and Dependence

Medical Procedures II

SUMMER BLOCK 6A COURSE

Gastrointestinal System

BETWEEN BLOCK 6A AND 6B COURSES

Preclinical Medical Science Review

FULL SUMMER SEMESTER COURSES

Osteopathic Principles and Practice III

Interdisciplinary Education and Professionalism I

Second Year

FALL BLOCK 6B COURSES

Endocrine System

Medical Procedures III

FALL BLOCK 7 COURSES

Renal/Urinary System

Human Sexuality

Women's Health System

Medical Procedures IV

FALL BLOCK 8 COURSES

Medical Neuroanatomy

Nervous System

Medical Procedures V

FULL FALL SEMESTER COURSES

Principles of Clinical Medicine I

Osteopathic Principles and Practice IV

Interdisciplinary Education and Professionalism II

WINTER BLOCK 9 COURSES

Musculoskeletal System

Rheumatology System

Psychiatry and Behavioral Medicine System

Business of Medicine

Medical Procedures VI

WINTER BLOCK 10 COURSES

Pediatrics System

Emergency Medicine

Geriatrics System

Medical Procedures VII

FULL WINTER SEMESTER COURSES

Osteopathic Principles and Practice V

Principles of Clinical Medicine II

Medical Spanish (spans M1 and M2 years)

Community Service (spans M1 and M2 years)

Interdisciplinary Education and Professionalism III

Research Practicum

SUMMER COURSES

ACLS

PALS

Preclinical Academic Review

FELLOWSHIPS

Predoctoral Osteopathic Principles and Practice Fellowship

Predoctoral Research Fellowship

DR. KIRAN C. PATEL ↑

College of Osteopathic Medicine



CURRICULUM OUTLINE, *continued*

Third Year

CORE CLINICAL ROTATIONS

Pediatrics—Ambulatory	General Surgery I
Pediatrics—Hospital	General Surgery II
Obstetrics and Gynecology	Internal Medicine I
Psychiatry	Internal Medicine II
Family Medicine I	Rural Medicine I
Family Medicine II	Rural Medicine II

Fourth Year

CORE CLINICAL ROTATIONS

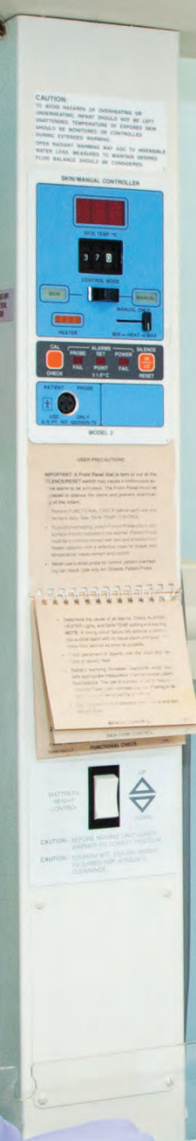
Emergency Medicine
Geriatrics Selective

SELECTIVE CLINICAL ROTATIONS

Internal Medicine Selective	Rural Medicine Selective
-----------------------------	--------------------------

ELECTIVE CLINICAL ROTATIONS

Allergy and Immunology	Obstetrics and Gynecology
Anesthesiology	Osteopathic Manipulative Medicine
Pediatric Anesthesiology	Ophthalmology
Critical Care Medicine	Orthopedic Surgery
Pain Medicine	Otolaryngology
Colon and Rectal Surgery	Pathology
Dermatology	Pediatrics
Emergency Medicine	Adolescent Medicine
Pediatric Emergency Medicine	Neonatal/Perinatal Medicine
Family Medicine	Pediatric Critical Care Pediatric Subspecialty
Sports Medicine	Physical Medicine and Rehabilitation
Geriatrics	Plastic Surgery
Internal Medicine	Preventive Medicine
Cardiovascular Medicine	Psychiatry
Endocrinology	Public Health
Gastroenterology	Radiation Oncology
Hematology and Oncology	Radiology
Infectious Disease	Rural/International Medicine
Nephrology	Surgery—General
Pulmonary Disease	Surgery—Hand
Rheumatology	Surgery—Pediatric
Medical Genetics	Surgery—Vascular
Neurosurgery	Surgery—Thoracic
Neurology	Surgical Critical Care
Nuclear Medicine	Urology



ADMISSIONS REQUIREMENTS

Applicants for admission to NSU's first-year class must meet the requirements listed below prior to matriculation.

1. have a bachelor's degree from a regionally accredited college or university (A minimum of 90 semester hours of coursework from a regionally accredited institution may be considered for admission.)
2. have successfully completed the following with a grade of 2.0 or higher:
 - 8 semester hours of biological science (includes biology, embryology, genetics, microbiology, physiology, and related subjects)
 - 8 semester hours of general chemistry with laboratory
 - 8 semester hours of organic chemistry with laboratory
 - 8 semester hours of physics
 - 3 semester hours of biochemistry
 - 6 semester hours of English/humanities (must include 3 semester hours of English)

These are the minimum academic requirements for admission. Students are strongly encouraged to take complementary higher science courses, such as immunology, physiology, behavioral sciences, and humanities.

3. have a minimum cumulative and science GPA of 3.0
4. have taken the Medical College Admission Test (MCAT) and have scores no more than three years from the date the AACOMAS application is submitted

Applications for the MCAT may be obtained online at aamc.org, from the college's preprofessional adviser's office, by calling (319) 337-1357, or by writing directly to

Medical College Admission Test Program Office

2255 North Dubuque Road
P.O. Box 4056
Iowa City, IA 52243-4056

This examination evaluates the applicant's knowledge of biology, general chemistry, organic chemistry, biochemistry, reading comprehension, social sciences, and quantitative reasoning. Only the best set of test scores will be considered. Any MCAT that is not a first attempt, taken in January or later within the same year of matriculation, may not be considered for admission in that academic year.

TIPS

It is strongly recommended that the examination be taken in the spring of the junior year, so that, if applicants feel that the test scores are unsatisfactory, they may retake the examination in the fall of the senior year.

Any variations of the admissions requirements must be approved by the dean.

APPLICATION PROCEDURES

STEPS SUMMARY

1. Apply to the American Association of Colleges of Osteopathic Medicine Application Service (AACOMAS).
2. Send supporting documents to AACOMAS.
 - completed AACOMAS application
 - all official transcripts
 - official MCAT scores
 - letters of recommendation
3. Complete NSU application and submit a nonrefundable, \$50 application fee.
4. Participate in a personal interview, if offered.

PRIMARY APPLICATION PROCESS

NSU-KPCOM participates in the American Association of Colleges of Osteopathic Medicine Application Service, which provides an interactive, web-based application that can be accessed through aacom.org, for the receipt and processing of all applications. AACOMAS takes no part in the selection of students.

✓ TIPS

The AACOMAS application process may take four to six weeks. Plan accordingly.

1. **Submit an application** through AACOMAS online.
2. **Submit the following materials** to AACOMAS no later than January 15. (All supporting documents must be submitted to AACOMAS electronically.)
 - a completed AACOMAS application
 - an official transcript from the registrars of all colleges and universities attended (mailed directly to AACOMAS by the college or university)
 - official MCAT scores (must be no more than three years prior to the date of the AACOMAS application submission)
 - a letter of recommendation from the preprofessional committee, or if such a committee does not exist, three letters of evaluation—two from science professors and one from a nonscience professor (If the applicant has been out of school for at least two years, and professors are no longer available, the applicant should contact a KPCOM admissions counselor.)
 - a letter of recommendation from a physician

Did You Know?

Letters of reference submitted via outside services may not be accepted, or could delay the application review. For questions, call (301) 968-4190.

SECONDARY APPLICATION PROCESS

NSU requires the completion of a secondary application. Upon receipt of the AACOMAS application, NSU-KPCOM will forward an online, secondary application to the applicant.

Submit the following materials to NSU no later than March 1:

- a completed secondary application
- a nonrefundable application fee of \$50

Did You Know?

NSU-KPCOM receives more than 7,000 completed AACOMAS applications per year and more than 5,000 secondary applications per year.

INTERVIEW PROCESS AND SELECTION FACTORS

A personal interview is a part of the admissions process. However, being interviewed is not a guarantee of admission. Upon completion of the applicant's file, a review will be made to determine if the candidate will be granted an interview. Not all applicants will be granted an interview, and only those applicants whose files are complete will be considered. The Office of Admissions will notify selected candidates for interviews.

The Committee on Admissions recommends applicants to the dean based on

- demonstrated academic excellence
- leadership
- compassion
- commitment to the osteopathic medical profession

NOTICE OF ACCEPTANCE

Notice of acceptance will be on a rolling or periodic schedule. Once accepted, and depending on the timing of an offer, students will be given the option to attend one of two campuses until all available seats are filled. Instructions for this process will come with the offer of admission.

Early completion of the application process is in the best interest of the applicant, because of the limited number of spaces available in each class.

After acceptance, final and official documents and requirements must be sent to

Nova Southeastern University

Enrollment Processing Services

Dr. Kiran C. Patel College of Osteopathic Medicine Admissions

3301 College Avenue, P.O. Box 299000

Fort Lauderdale, FL 33329-9905

Transcripts can be sent electronically from the originating college/university to electronictranscripts@nova.edu.



TRANSFER STUDENTS

Students seeking admittance to NSU-KPCOM after attending another institution, may transfer credits from medical schools and colleges accredited by the Commission on Osteopathic College Accreditation (COCA) of the American Osteopathic Association or by the Liaison Committee on Medical Education (LCME).

- Transfers from a medical school accredited by the COCA or the LCME shall require that, at minimum, the last two years of instruction be completed within NSU-KPCOM.
- Transfers from an LCME-accredited medical school must complete NSU's requirement for osteopathic principles and practice prior to graduation.
- Transfer credits will only be given if the student is in good academic standing at, and eligible for readmission to, the previously attended COCA- or LCME-accredited medical school.
- Credit is only given for completed courses with grades of 70 percent (2.0) or greater that fulfill NSU-KPCOM's graduation requirements.

To transfer to NSU-KPCOM, students must

1. complete a formal application to the NSU-KPCOM Office of Admissions
2. satisfy all admissions requirements, including submission of
 - official transcripts of all college work (including the medical school the student is currently transferring from)
 - MCAT scores
 - National Board scores, if taken
 - letters of evaluation
3. be in good standing at the transferring institution, as documented by a letter from the dean's office of the transferring institution
4. provide one letter of recommendation from a faculty member of the transferring osteopathic institution
5. provide a written statement outlining reasons for the request to transfer

All application documents must be submitted to

Nova Southeastern University

Enrollment Processing Services

Dr. Kiran C. Patel College of Osteopathic Medicine Admissions

3301 College Avenue, P.O. Box 299000

Fort Lauderdale, FL 33329-9905

Transcripts can be sent electronically from the originating college/university to electronictranscripts@nova.edu.

Transfer decisions are made by the dean. No transfer applicant will be accepted without an interview. The decision will be based on factors that include, but are not limited to, submission of all required documents and information, academic record, interview, circumstances leading to the transfer request, available space, and admissions standards.

TUITION AND FEES

Tuition for 2021–2022 will be posted at osteopathic.nova.edu. All tuition and fees are subject to change by the board of trustees without notice.

GENERAL FEES

NSU Student Services Fee	\$500 per semester
HPD General Access Fee	\$145 annually
Registration Fee	\$30 per semester

CLINICAL CORE ROTATION FEES

M1 Year	\$1,000
M2 Year	\$1,000
M3 Year	\$1,000
M4 Year	\$1,000

MANDATED REVIEW COURSE FEES

M1 Year	\$563.25
M2 Year	\$564
M3 Year	\$522

M4 FEES

Commencement	\$175
Degree Application	\$100

ACCEPTANCE FEE \$1,250

This fee is required to reserve the accepted applicant's place in the entering first-year class. This advance payment will be deducted from the tuition payment due on registration day, but is nonrefundable in the event of a withdrawal.

Acceptance Date	Payment Deadline
Prior to November 15	December 14
Between November 15 and January 14	30 days from acceptance
Between January 15 and May 14	14 days from acceptance
On or after May 15	Immediately upon acceptance

DEPOSIT \$750

This advance payment will be deducted from the tuition payment, but is nonrefundable in the event of a withdrawal.

Acceptance Date	Payment Deadline
Prior to March 2	March 15
Between March 2 and May 14	14 days from acceptance
On or after May 15	Immediately upon acceptance

IN-STATE TUITION

Eligible students must request in-state tuition on the application. For tuition purposes, a student's Florida residency status (in-state or out-of-state) will be determined based on initial matriculation and will remain the same throughout the entire enrollment of the student at NSU. Accordingly, tuition will not be adjusted as a result of any change in status after initial enrollment registration.

The first semester's tuition and fees, less the \$2,000 previously paid (acceptance fee and deposit), are due upon receipt of the NSU invoice. Students will be billed for each subsequent semester.

FINANCIAL OBLIGATIONS

Students will not be admitted until their financial obligations have been met. The financial ability of applicants to complete their training at the college is important, because of the limited number of positions available in each class. Applicants should have specific plans for financing four years of professional education. This should include tuition, living expenses, books, equipment, and miscellaneous expenses.

Each student is required to carry adequate personal medical and hospital insurance. Students may avail themselves of the hospitalization insurance plan obtainable through the university.





FOREIGN COURSEWORK

Coursework taken at foreign institutions must be evaluated for U.S. institution equivalence by an approved National Association of Credential Evaluation Services (NACES) organization, such as one of the services listed below.

World Education Services, Inc.

Bowling Green Station
P.O. Box 5087
New York, NY 10274-5087
(212) 966-6311 • *wes.org*

**Josef Silny & Associates, Inc.,
International Education Consultants**

7101 SW 102 Avenue
Miami, FL 33173
(305) 273-1616 • (305) 273-1338 fax
info@jsilny.org • jsilny.org

Educational Credential Evaluators, Inc.

P.O. Box 514070
Milwaukee, WI 53203-3470
(414) 289-3400 • *ece.org*

It is the applicant's responsibility to have this coursework evaluated. An official course-by-course evaluation with a cumulative grade point average must be sent directly from the evaluation service to NSU's Enrollment Processing Services.

Nova Southeastern University

Enrollment Processing Services
Dr. Kiran C. Patel College of Osteopathic Medicine Admissions
3301 College Avenue, P.O. Box 299000
Fort Lauderdale, FL 33329-9905

STUDENT HOUSING

Numerous apartments, condominiums, and other rental facilities are located near campus. Information concerning housing may be obtained by contacting

Nova Southeastern University

Office of Residential Life and Housing
3301 College Avenue
Fort Lauderdale, FL 33314-7796

(954) 262-7052

ACCREDITATIONS

Nova Southeastern University's Dr. Kiran C. Patel College of Osteopathic Medicine has been granted accreditation by the Commission on Osteopathic College Accreditation of the American Osteopathic Association, www.osteopathic.org. This body is recognized by the U.S. Department of Education as the accrediting agency for colleges educating osteopathic physicians and surgeons.

NSU's Master of Public Health Program is accredited by the Council on Education for Public Health, www.ceph.org.

Nova Southeastern University is accredited by the Southern Association of Colleges and Schools Commission on Colleges to award associate's, baccalaureate, master's, educational specialist, doctorate, and professional degrees. Contact the Commission on Colleges at 1866 Southern Lane, Decatur, Georgia 30033-4097 or call 404-679-4500 for questions about the accreditation of Nova Southeastern University.



NONDISCRIMINATION

Consistent with all federal and state laws, rules, regulations, and/or local ordinances (e.g., Title VII, Title VI, Title III, Title II, Rehab Act, ADA, Title IX, and the Florida Civil Rights Act), it is the policy of Nova Southeastern University's Dr. Kiran C. Patel College of Osteopathic Medicine (KPCOM) not to engage in any discrimination or harassment against any persons because of race, color, religion or creed, sex, pregnancy status, national or ethnic origin, nondisqualifying disability, age, ancestry, marital status, sexual orientation, gender, gender identity, military service, veteran status, or political beliefs or affiliations, and to comply with all federal and state nondiscrimination, equal opportunity, and affirmative action laws, orders, and regulations. Any such acts are unacceptable and strictly prohibited by the university.

In addition, the law prohibits retaliation against an individual for opposing any practices forbidden under this policy, for bringing a complaint of discrimination or harassment, for assisting someone with such a complaint, for attempting to stop such discrimination or harassment, or for participating in any manner in any investigation or resolution of a complaint of discrimination or harassment. This nondiscrimination policy applies to admissions; enrollment; scholarships; loan programs; athletics; employment; and access to, participation in, and treatment in all university centers, programs, and activities. NSU-KPCOM admits students of any race, color, religion or creed, sex, pregnancy status, national or ethnic origin, nondisqualifying disability, age, ancestry, marital status, sexual orientation, gender, gender identity, military service, veteran status, or political beliefs or affiliations, to all the rights, privileges, programs, and activities generally accorded or made available to students at NSU, and does not discriminate in the administration of its educational policies, admission policies, scholarship and loan programs, and athletic and other school-administered programs.



TAMPA BAY, FLORIDA



Welcome to Tampa Bay

Situated along Florida's Gulf Coast, this region boasts an enviable quality of life with year-round sunshine, a unique cultural heritage, and a diverse business climate. For individuals and companies alike, the Tampa Bay area offers accessibility, affordability, and opportunity.



NSU Tampa Bay Regional Campus

Since 1999, Nova Southeastern University (NSU) has been offering world-class educational programs in the Tampa Bay Area. From nursing to education to health care sciences, NSU has been providing students with an edge, so when they graduate, they are not only ready to enter the workplace, they are prepared to be the leaders of tomorrow.

Now, thanks to the generosity of the Drs. Kiran C. and Pallavi Patel Family Foundation, those efforts are being taken to the next level.

In 2017, the foundation provided NSU with philanthropic gifts and financial commitments totaling approximately \$225 million. This included a \$150-million real estate and facility investment that resulted in the university's new Tampa Bay Regional Campus location in Clearwater, Florida. This more than 300,000-square-foot, state-of-the-art facility will continue to be the home of the university's existing educational programs, but will also include an additional site for the university's Dr. Kiran C. Patel College of Osteopathic Medicine.

One of the Largest Metropolitan Statistical Areas in the Southeastern U.S.



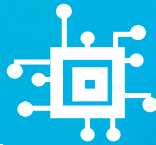
DIVERSE AND EXPANDING BUSINESS MIX



Financial Services



Bioscience



Technology



International Trade

2.7 million people



Average Temperature

73°

Fahrenheit

ATTRACTIONS



Tampa Museum of Art



Curtis Hixon
Downtown Waterfront Park



PRO SPORTS TEAMS



NFL
Tampa Bay
Buccaneers

MLB
Tampa Bay
Rays



NHL
Tampa Bay
Lightning

ACTIVITIES



MESSAGE FROM THE HPD CHANCELLOR



The past few years have been incredibly productive for the Nova Southeastern University (NSU) Health Professions Division (HPD), and more achievements are on the way.

At NSU, we are always looking toward the future. The HPD now offers more than 60 degree and certificate programs through its 8 colleges at the university's campuses in Fort Lauderdale/Davie, Fort Myers, Jacksonville, Miami, Miramar, Orlando, Palm Beach, Tampa Bay, and Puerto Rico.

In terms of our academic structure, we are always looking to enhance the educational experience for our students. This is accomplished by implementing the most cutting-edge technology, as well as through our various, and sometimes subtle, curricular revisions.

In August 2019, we celebrated a milestone in the university's history with the official opening of the 311,000-square-foot NSU Tampa Bay Regional Campus located in Clearwater, Florida. It is one of the most highly advanced instructive sites in the United States. The new campus, which offers the most progressive pedagogy and technology possible, also features distinctive design aspects to provide students with the optimal educational experience.

The Tampa Bay Regional Campus houses an additional site for NSU's Dr. Kiran C. Patel College of Osteopathic Medicine, which is the original school of the university's Health Professions Division. However, the Dr. Pallavi Patel College of Health Care Sciences and the Ron and Kathy Assaf College of Nursing are also represented there. These colleges stand alongside each other, not as separate programs or separate schools, but as collaborative and collegial health education entities.


In keeping with NSU's progressive trend, the Martin and Gail Press HPD Library at the Fort Lauderdale/Davie Campus was revamped, replacing written texts with a digital workspace. This allows students to immediately access a wealth of databases and has almost tripled the amount of information that was previously available to them.

Thanks to the commitment of so many dedicated and talented people, the HPD's future is brighter than ever.

A handwritten signature in blue ink, reading "Frederick R. Lippman". The signature is fluid and cursive, with a small mark above the 'i' in "Lippman".

Frederick R. Lippman, R.Ph., Ed.D.
HPD Chancellor, Special Projects

HEALTH PROFESSIONS DIVISION FAST FACTS



8,000+
STUDENTS

1 OF ONLY 3
UNIVERSITIES IN THE U.S.
WITH MEDICAL SCHOOLS
OFFERING BOTH
D.O. and M.D. DEGREES



8 COLLEGES

DR. KIRAN C. PATEL COLLEGE OF OSTEOPATHIC MEDICINE
COLLEGE OF PHARMACY
COLLEGE OF OPTOMETRY
DR. PALLAVI PATEL COLLEGE OF HEALTH CARE SCIENCES
COLLEGE OF MEDICAL SCIENCES
COLLEGE OF DENTAL MEDICINE
RON AND KATHY ASSAF COLLEGE OF NURSING
DR. KIRAN C. PATEL COLLEGE OF ALLOPATHIC MEDICINE

\$70-MILLION
HEADQUARTERS COMPLEX IN
FORT LAUDERDALE/DAVIE FLORIDA



**NEW
TAMPA BAY
REGIONAL
CAMPUS**

**SPECIAL
LEARNING
OPTIONS**

- » Regional Campuses
- » Online
- » Dual Degrees

NSU's Health Professions Division (HPD), with a student body of more than 8,000, is home to eight colleges. Located on the Fort Lauderdale/Davie Campus, it occupies a \$70-million complex, covering 21 acres. HPD includes eight buildings totaling more than 900,000 square feet of space for classrooms, laboratories, offices, the Martin and Gail Press Health Professions Division Library, an outpatient health center, and a pharmaceutical care center. Several of the HPD programs are also located at our regional campuses, extending our programs and resources to various communities. They offer you the ability to complete a degree at a location that may be more convenient to your home.



NSU Fort Lauderdale/Davie Campus

HEALTH PROFESSION DIVISION COMPLEX AND CENTER FOR COLLABORATIVE RESEARCH (see next page for location on campus)



1 TERRY ADMINISTRATION BUILDING

First Floor

- Admissions
- Student Financial Aid
- One-Stop Shop
- HPD Cafeteria

Second Floor

- Dr. Pallavi Patel College of Health Care Sciences
 - Audiology Department
 - Health Sciences Department
 - Occupational Therapy Department
 - Physical Therapy Department
 - Physician Assistant Department

Third Floor

- College of Medical Sciences
- College of Pharmacy

Fourth Floor

- Dr. Kiran C. Patel College of Osteopathic Medicine
- College of Optometry

Fifth Floor

- HPD Administration
- Dr. Kiran C. Patel College of Allopathic Medicine
- Public Health Program
- Ron and Kathy Assaf College of Nursing
- Area Health Education Center

2 ASSEMBLY BUILDING

- Finkelstein Auditorium (125 seats)
- Jonas Auditorium (125 seats)
- Melnick Auditorium (125 seats)
- Resnick Auditorium (125 seats)
- Terry Auditorium (125 seats)
- Auditoria A, B, and C (125 seats each)
- Robert A. Steele Auditorium (500 seats)
- Hull Auditorium (250 seats)
- Seminar Rooms

3 LIBRARY/LABORATORY BUILDING

First Floor

- ACORN SEED
- Medication Therapy Management

- “Harvey” Cardiac Patient Simulation Room
- Martin and Gail Press Health Professions Division Library
- Student Computer Laboratory
- Patient Simulation Center

Second Floor

- Occupational Therapy Laboratories
- Optometry Laboratories
- Physical Therapy Laboratory
- Student Lounge
- FOMA Osteopathic Manipulative Medicine Laboratory

Third Floor

- Basic Science Laboratories
- Gross Anatomy Laboratories
- Microscopy Laboratory
- Research Laboratories
- Moran Pharmacy Practice Laboratory
- Pharmacokinetics Laboratory
- Pharmaceuticals Laboratory

4 PHARMACY AND PHARMACEUTICAL CARE CENTER

5 SANFORD L. ZIFF HEALTH CARE CENTER

First Floor

- Audiology
- Family Medicine
- Geriatric Medicine
- Internal Medicine
- Pediatrics
- Pediatric Physical Therapy
- Student Medical Center

Second Floor

- Optometry Clinics
- Optometry Dispensary

Third Floor

- Business Offices
- Employee Wellness Center
- OB-GYN
- Osteopathic Medicine Treatment Center

6 DENTAL MEDICINE BUILDING

First Floor

- Dental Urgent Care Clinic
- Radiology Clinic
- Student Dental Clinic
- Clinic Support Laboratory
- Predoctoral and Postgrad. Oral Surgery

Second Floor

- Faculty Practice
- Simulation Lab



- Postgraduate Endodontics
- Postgraduate Orthodontics
- Postgraduate Periodontics
- Postgraduate Prosthodontics

Third Floor

- Postgraduate Operative Dentistry Clinic
- Research Laboratories

- Seminar Rooms
- Central Sterilization Area
- Administrative Offices
- Faculty Offices
- Student Dental Supply Depot

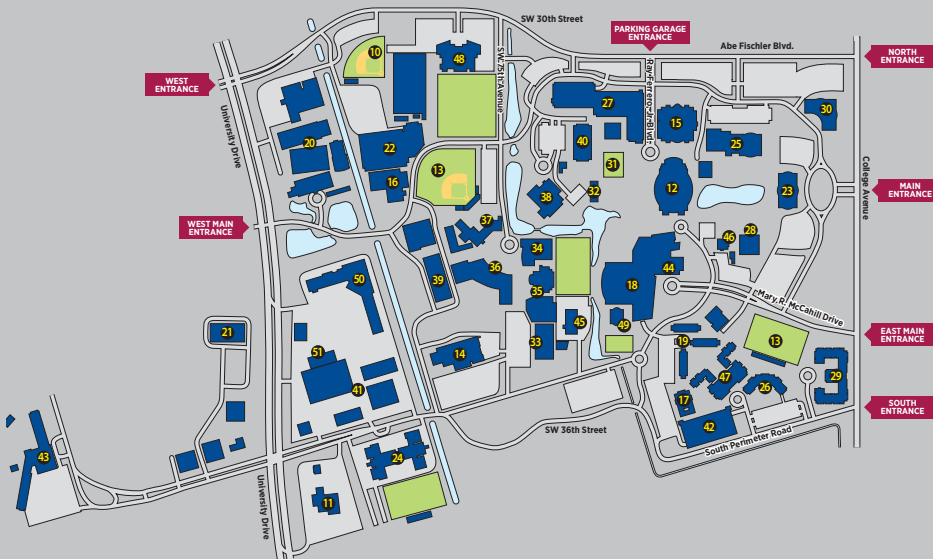
7 PARKING GARAGE

8 HPD ASSEMBLY BUILDING

- Auditorium
- Computer Science Laboratory
- Research Laboratories
- Seminar Rooms
- Physical Assessment Laboratory
- Compliance Office

9 CENTER FOR COLLABORATIVE RESEARCH

NSU FORT LAUDERDALE/DAVIE CAMPUS



A.D. Griffin Sports Complex with Lighted Softball Fields10

Administrative Services Building 11

Alvin Sherman Library, Research, and Information Technology Center 12

Athletics Fields 13

Campus Support Building 14

Carl DeSantis Building 15

Center for Collaborative Research 16

Cultural Living Center 17

Don Taft University Center 18

Farquhar, Founders, and Vettel Apartments 19

Health Professions Division Complex 20

HPD Annex 21

HPD and Health Care Center Parking Garage 22

Horvitz Administration Building 23

Jim & Jan Moran Family Center Village 24

Leo Goodwin Sr. Building 25

Leo Goodwin Sr. Hall 26

Library and Student Main Parking Garage 27

Mailman-Hollywood Building 28

Mako Hall 29

Maltz Building 30

Medicinal and Healing Garden 31

NSU Bookstore 32

NSU University School Aquatics Center 33

NSU University School—AutoNation Center for the Arts 34

NSU University School—Noël P. Brown Sports Center 35

NSU University School—Lower School 36

NSU University School—Middle School (Dauer Building) 37

NSU University School—Upper School (Sonken Building) 38

NSU University School—West Parking Garage 39

Parker Building 40

Plantation General Hospital Complex (future site) . . 41

Residence Hall Parking Garage 42

Rolling Hills Apartments 43

Rosenthal Student Center 44

Shark Athletics Building 45

Student Affairs Building 46

The Commons Hall 47

The Doctors Hospital Miami Dolphins Training Facility 48

University Center Rec Plex Pool 49

University Park Plaza 50

Westside Regional Medical Center ER 51



GET THE NSU EDGE.

NSU trains health practitioners in a multidisciplinary setting, with an emphasis on medically underserved areas. Because of this, our students go on to excel as highly qualified physicians and health care professionals who

- ✦ understand how the medical disciplines can and must work together
- ✦ share a vision to transform the future of health care and provide easier access to high-quality services for patients
- ✦ experience life-changing service working domestically and internationally with people in need
- ✦ graduate with exposure to varied cultures and the unique concerns that each present
- ✦ carry with them an unparalleled, real-world education that serves to enrich us all

With value-based education, accelerated tracks to graduation, access to a vast network of industry partners, and a chance to explore personal passions, near and far, our graduates will always have an edge.

“Global service is a passion we love and look forward to every year.”

—Kelly Graham, NSU class of 2019



NSU'S HEALTH PROFESSIONS DIVISION

Dr. Kiran C. Patel College of Osteopathic Medicine

- Doctor of Philosophy in Family Therapy (Ph.D.)
- Doctor of Marriage and Family Therapy (D.M.F.T.)
- Doctor of Osteopathic Medicine (D.O.)
- Master of Public Health (M.P.H.)
- Master of Science in Biomedical Informatics (M.S.)
- Master of Science in Disaster and Emergency Management (M.S.)
- Master of Science in Family Therapy (M.S.)
- Master of Science in Medical Education (M.S.)
- Master of Science in Nutrition (M.S.)
- Bachelor of Science in Human Development and Family Studies (B.S.)
- Bachelor of Science in Human Nutrition (B.S.)
- Bachelor of Science in Public Health (B.S.)
- Bachelor of Science in Health and Wellness Coaching (B.S.)
- Graduate Certificate in Emergency Medicine
- Graduate Certificate in Family Studies
- Graduate Certificate in Functional Nutrition and Herbal Therapy
- Graduate Certificate in Health Education
- Graduate Certificate in Health Professions Preparation
- Graduate Certificate in Medical Informatics
- Graduate Certificate in Public Health
- Graduate Certificate in Public Health Informatics
- Graduate Certificate in Social Medicine
- Graduate Certificate in Solution-Focused Coaching

College of Pharmacy

- Master of Science in Pharmaceutical Sciences (M.S.)
 - * Concentration in Drug Development (Pharmaceutics)
 - * Concentration in Molecular Medicine and Pharmacogenomics
 - * Concentration in Social and Administrative Pharmacy
- Doctor of Pharmacy (Pharm.D.)
- Doctor of Philosophy in Pharmaceutical Sciences (Ph.D.)
 - * Concentration in Drug Development (Pharmaceutics)
 - * Concentration in Molecular Medicine and Pharmacogenomics
 - * Concentration in Social and Administrative Pharmacy

College of Optometry

- Doctor of Optometry (O.D.)
- Master of Science in Clinical Vision Research (M.S.)
- Bachelor of Science in Vision Science (B.S.)
- Graduate Certificate in Clinical Vision Research

Dr. Pallavi Patel College of Health Care Sciences

- Bachelor of Science—Cardiovascular Sonography (B.S.)
- Bachelor of Science in Exercise and Sport Science (B.S.)
- Bachelor of Health Science (B.H.Sc.)
- Bachelor of Science—Medical Sonography (B.S.)
- Bachelor of Science in Respiratory Therapy (B.S.)
- Bachelor of Science in Speech-Language and Communication Disorders (B.S.)
- Master of Science in Anesthesia (M.S.)
- Master of Health Science (M.H.Sc.)
- Master of Occupational Therapy (M.O.T.)
- Master of Medical Science in Physician Assistant (M.M.S.)

DEGREE PROGRAMS

- Master of Science in Speech-Language Pathology (M.S.)
- Master of Science in Sports Science (M.S.)
- Doctor of Audiology (Au.D.)
- Doctor of Health Science (D.H.Sc.)
- Doctor of Philosophy in Health Science (Ph.D.)
- Entry-Level Doctor of Occupational Therapy (O.T.D.)
- Doctor of Occupational Therapy (Dr.O.T.)
- Doctor of Philosophy in Occupational Therapy (Ph.D.)
- Doctor of Physical Therapy (D.P.T.)
 - * Professional Doctor of Physical Therapy (D.P.T.)
 - * Postprofessional Doctor of Physical Therapy: Transition (D.P.T.)
- Doctor of Philosophy in Physical Therapy (Ph.D.)
- Doctor of Speech-Language Pathology (SLP.D.)
- Certificate in Audiologist Assistant
- Graduate Certificate in Clinical Research Associate
- Graduate Certificate in Clinical Trial Manager

College of Dental Medicine

- Doctor of Dental Medicine (D.M.D.)
- Master of Science in Dentistry (M.S.)
- Postgraduate Certificate in Advanced Education in General Dentistry
- Postgraduate Certificate in Endodontics
- Postgraduate Certificate in Operative Dentistry
- Postgraduate Certificate in Oral and Maxillofacial Surgery
- Postgraduate Certificate in Orthodontics and Dentofacial Orthopedics
- Postgraduate Certificate in Pediatric Dentistry
- Postgraduate Certificate in Periodontics
- Postgraduate Certificate in Prosthodontics
- Postgraduate Certificate in Special Needs Dentistry
- Craniofacial Research Fellowship Program

Ron and Kathy Assaf College of Nursing

- Bachelor of Science in Nursing (B.S.N.)
- Master of Science in Nursing (M.S.N.)
 - * Traditional Concentrations
 - Executive Nurse Leadership
 - Nursing Education
 - Nursing Informatics
 - * Nurse Practitioner Concentrations (Advanced Practice Registered Nurse)
 - Adult-Gerontology Acute Care Nurse Practitioner
 - Family Nurse Practitioner
 - Psychiatric-Mental Health Nurse Practitioner
- Postgraduate Certificates
 - * Adult-Gerontology Acute Care Nurse Practitioner
 - * Family Nurse Practitioner
 - * Psychiatric-Mental Health Nurse Practitioner
- Doctor of Nursing Practice (D.N.P.)
- Doctor of Philosophy in Nursing (Ph.D.)

Dr. Kiran C. Patel College of Allopathic Medicine

- Master of Biomedical Sciences (M.B.S.)
- Doctor of Medicine (M.D.)



HEALTH
PROFESSIONS
DIVISION

NOVA
SOUTHEASTERN
UNIVERSITY

NSU'S HEALTH PROFESSIONS DIVISION DEGREE PROGRAMS

Dual Degrees

- Bachelor of Science—Cardiovascular Sonography (B.S.) and Master of Health Science (M.H.Sc.)
- Bachelor of Science—Medical Sonography (B.S.) and Master of Health Science (M.H.Sc.)
- Master of Health Science (M.H.Sc.)/Doctor of Health Science (D.H.Sc.)
- Master of Health Science (M.H.Sc.)/Doctor of Philosophy in Health Science (Ph.D.)
- Master of Health Science (M.H.Sc.)/Doctor of Philosophy in Health Science (Ph.D.)
- Master of Science in Nursing (M.S.N.)/Doctor of Nursing Practice (D.N.P.)

Concurrent Degrees

- Doctor of Osteopathic Medicine (D.O.)/Master of Science in Medical Education (M.S.)
- Doctor of Osteopathic Medicine (D.O.)/Master of Public Health (M.P.H.)
- Doctor of Osteopathic Medicine (D.O.)/Master of Science in Biomedical Informatics (M.S.)
- Doctor of Osteopathic Medicine (D.O.)/Master of Science in Disaster and Emergency Management (M.S.)
- Doctor of Osteopathic Medicine (D.O.)/Master of Science in Nutrition (M.S.)
- Doctor of Pharmacy (Pharm.D.)/Master of Business Administration (M.B.A.)
- Doctor of Pharmacy (Pharm.D.)/Master of Public Health (M.P.H.)
- Doctor of Pharmacy (Pharm.D.)/Master of Science in Biomedical Informatics (M.S.)
- Doctor of Optometry (O.D.)/Master of Public Health (M.P.H.)
- Doctor of Audiology (Au.D.)/Master of Business Administration (M.B.A.)
- Master of Medical Science (M.M.S.)/Master of Public Health (M.P.H.)
- Doctor of Dental Medicine (D.M.D.)/Master of Public Health (M.P.H.)
- Doctor of Dental Medicine (D.M.D.)/Master of Business Administration (M.B.A.)



NOTEWORTHY RECOGNITIONS



- **Forbes magazine ranked NSU as one of America's Top Colleges in 2019.**
Forbes favors variables like low student debt, alumni salary, graduation rate, and student satisfaction. NSU ranked in the top 15 percent of 4,300 institutes of higher education.
- **U.S. News & World Report ranked NSU as one of the top performers in social mobility for 2020.**
- According to the National Center for Educational Statistics Integrated Postsecondary Education Data System (IPEDS), in terms of all national, four-year, private, nonprofit institutions, NSU ranks
 - ♦ **first in doctoral degrees awarded to all minorities**
 - ♦ **first in doctoral degrees awarded to Hispanic students**
 - ♦ **second in doctoral degrees awarded to black or African American students**
- **U.S. News & World Report listed several of NSU's programs among their top 100 graduate schools in the country.** Two programs from the Shepard Broad College of Law—health law and legal writing—ranked among the best for 2020, along with three NSU HPD programs—audiology, occupational therapy, and pharmacy.

RECOGNITIONS

NOVA SOUTHEASTERN
UNIVERSITY

NSU
Florida



\$5-BILLION+
ECONOMIC
IMPACT FOR
FLORIDA
BY 2025

1 OF ONLY 9 U.S. UNIVERSITIES THAT
“COULD CHALLENGE THE ELITE” BY 2030

CLASSIFIED AS A
UNIVERSITY WITH
“HIGH RESEARCH
ACTIVITY” BY THE CARNEGIE
FOUNDATION FOR THE
ADVANCEMENT OF TEACHING



150+
ACADEMIC
PROGRAMS

- BACHELOR'S
- MASTER'S
- SPECIALIST
- DOCTORAL
- PROFESSIONAL
- CERTIFICATE

1 OF ONLY 50
UNIVERSITIES NATIONWIDE
TO ALSO BE AWARDED
CARNEGIE'S COMMUNITY
ENGAGEMENT
CLASSIFICATION

2ND LARGEST,
PRIVATE, NONPROFIT
UNIVERSITY
IN THE SOUTHEAST

235 FUNDED RESEARCH PROJECTS
AT NSU ADDRESSING

- AUTISM SPECTRUM DISORDERS
- CANCER THERAPIES
- CARDIOVASCULAR DISEASE
- CHRONIC FATIGUE SYNDROME
- CORAL REEF PRESERVATION
- OPIOID AND SUBSTANCE ABUSE
- AND MUCH MORE

Nova Southeastern University—synonymous with dynamic innovation and intellectual challenge—is the second-largest, private, nonprofit university in the Southeast. Situated on a beautiful, 314-acre campus in Fort Lauderdale, Florida, the university is experiencing a sustained period of academic growth, fiscal strength, and commitment to the challenges of the 21st century. In this environment of expansion and stability, the university is capitalizing on its strengths in such areas as academic innovation, comprehensive clinical training, and flexible educational delivery systems.

The university awards certificates and bachelor's, master's, educational specialist, and doctoral degrees, all in a wide range of fields, including the health professions, law, business, marine sciences, psychology, social sciences, computer and information sciences, and education. For more information, please visit nova.edu.

This brochure is for information purposes only and does not represent a contract. Information contained herein is subject to change at any time by administrative decision on the direction of the board of trustees. Updated information can be found on our website (osteopathic.nova.edu).

NSU

Florida

Dr. Kiran C. Patel College
of Osteopathic Medicine
**NOVA SOUTHEASTERN
UNIVERSITY**

OSTEOPATHIC MEDICINE PROGRAM

Office of Admissions

(954) 262-1101

877-640-0218

3200 South University Drive

Fort Lauderdale, FL

33328-2018

nova.edu

