

# Edge AI in Smart Manufacturing: Defect Detection and Beyond

Trista Chen, Chief Scientist of Machine Learning of Inventec

Wei-Chao Chen, Co-founder of Skywatch & Head of Inventec AI Center

{chen.trista, chen.wei-chao} @ inventec.com

創新

Innovation

品質

Quality

虛心

Open Mind

力行

Execution

# Speaker Bio



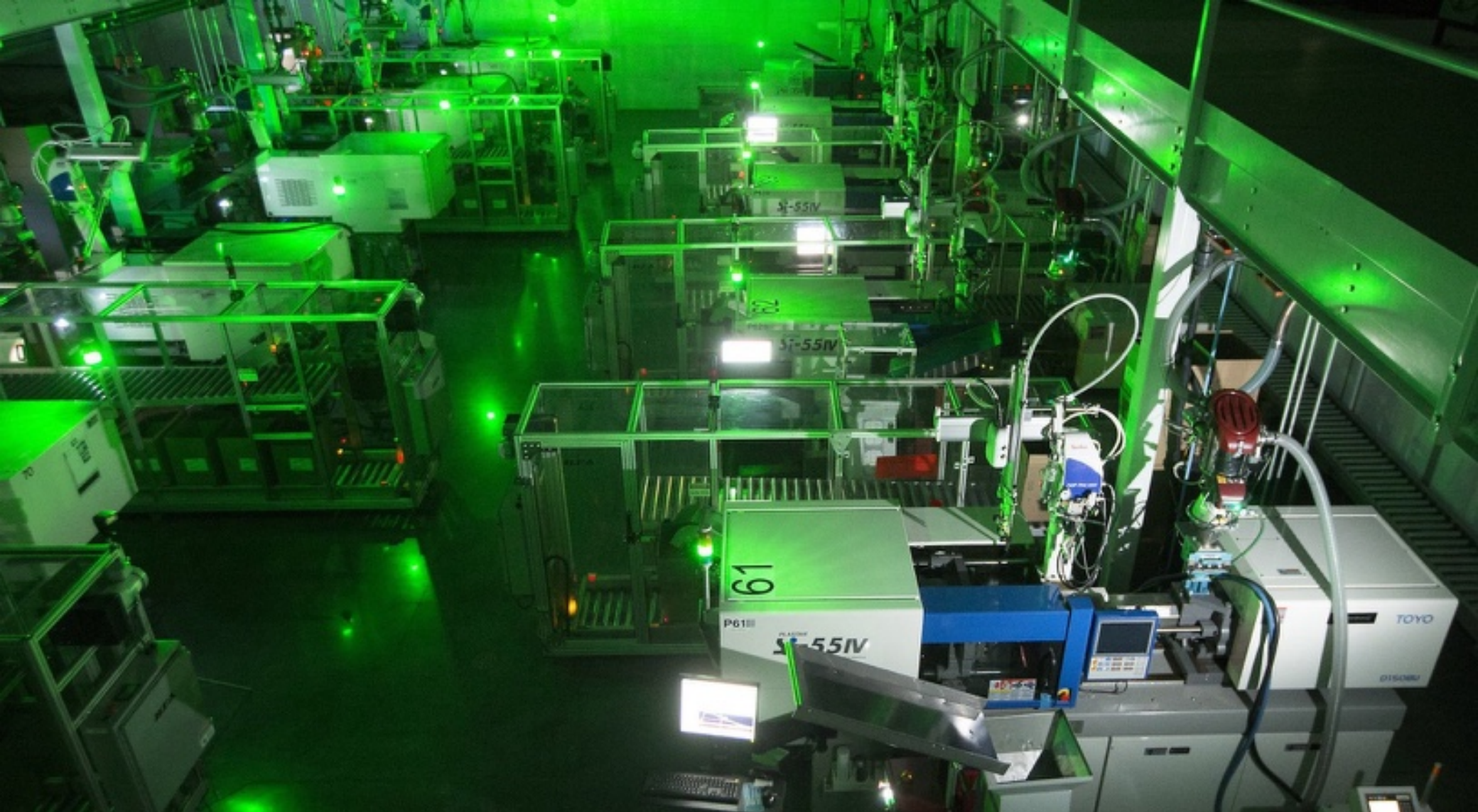
## Trista Chen

- Chief Scientist in Machine Learning, Inventec Inc.
  - Serial Entrepreneur at the Bay Area
  - Staff Research Scientist, Intel Corp.
  - Video Architect, NVIDIA Corp.
  
  - Ph.D., CMU ECE
- 



## Wei-Chao Chen

- Head of AI Center & Chief AI Advisor, Inventec Inc.
- Co-Founder & CEO, Skywatch Inc.
- Senior Research Scientist, Nokia Palo Alto
- Graphics Architect, NVIDIA Corp.
  
- Ph.D., UNC Chapel-Hill CS



# Smart Manufacturing

<https://medium.com/@kenmacken/who-turned-off-all-the-lights-470dc797fd0f>

**Inventec**





# Lights-Out Factory

<https://medium.com/@kenmacken/who-turned-off-all-the-lights-470dc797fd0f>

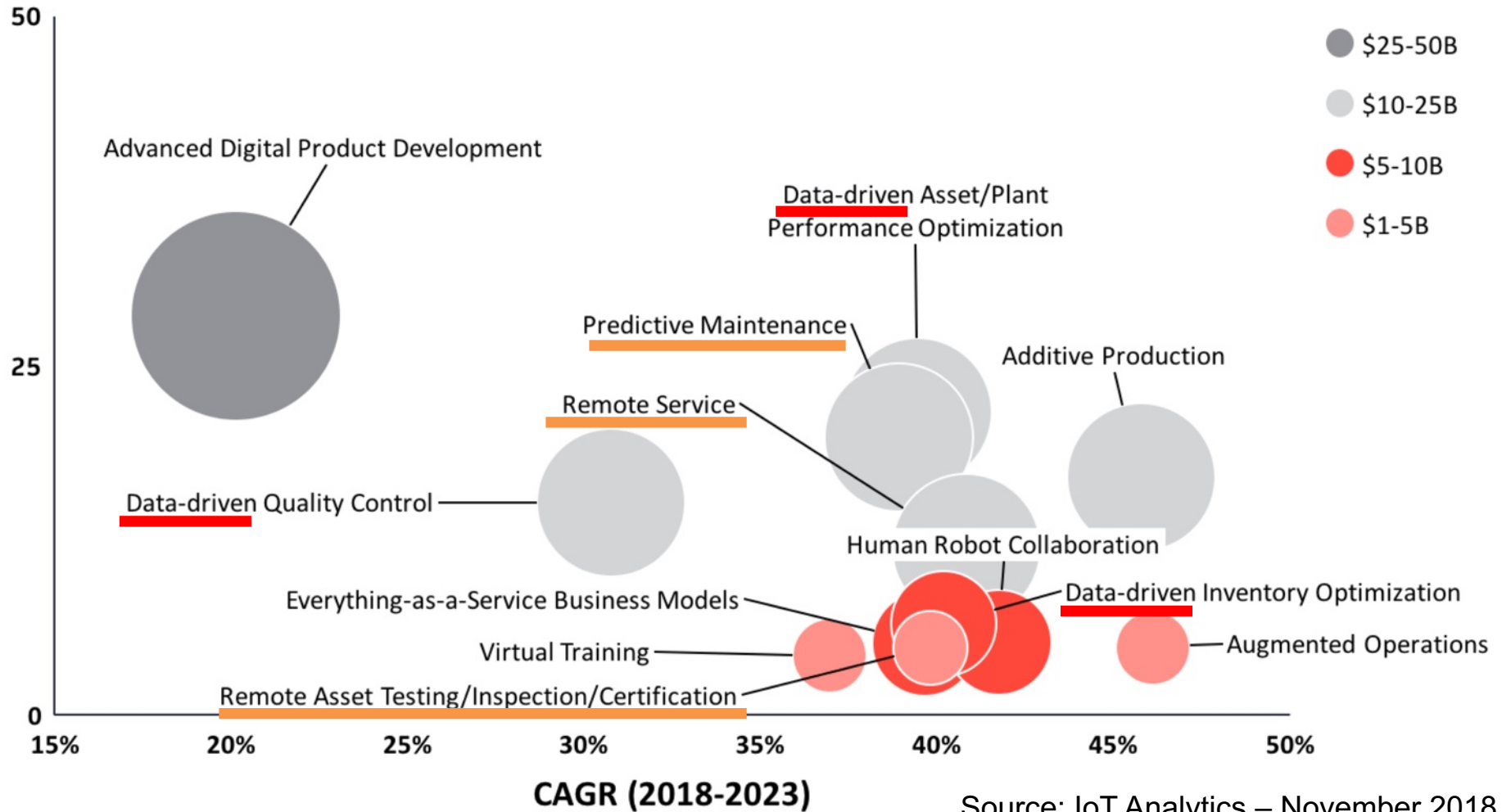
**Inventec**





# Top 12 Industry 4.0 (I4.0) use cases

2023 Market Size (\$B)



Source: IoT Analytics – November 2018

Manufacturing stores more data than any other sector  
– an estimated two exabytes ( $2 \cdot 10^{18}$  bytes) in 2010.

Source: McKinsey & Company, *"Is manufacturing 'cool' again?"* 2013



# About Inventec

- Public company (Since 1975; Taipei, Taiwan)
- Tier 1 electronics manufacturer
- Annual revenue USD \$16B+ (2018)
- Factories in Taiwan, Shanghai and Chongqing



Personal Computers  
Laptops



Enterprise Computers  
Servers



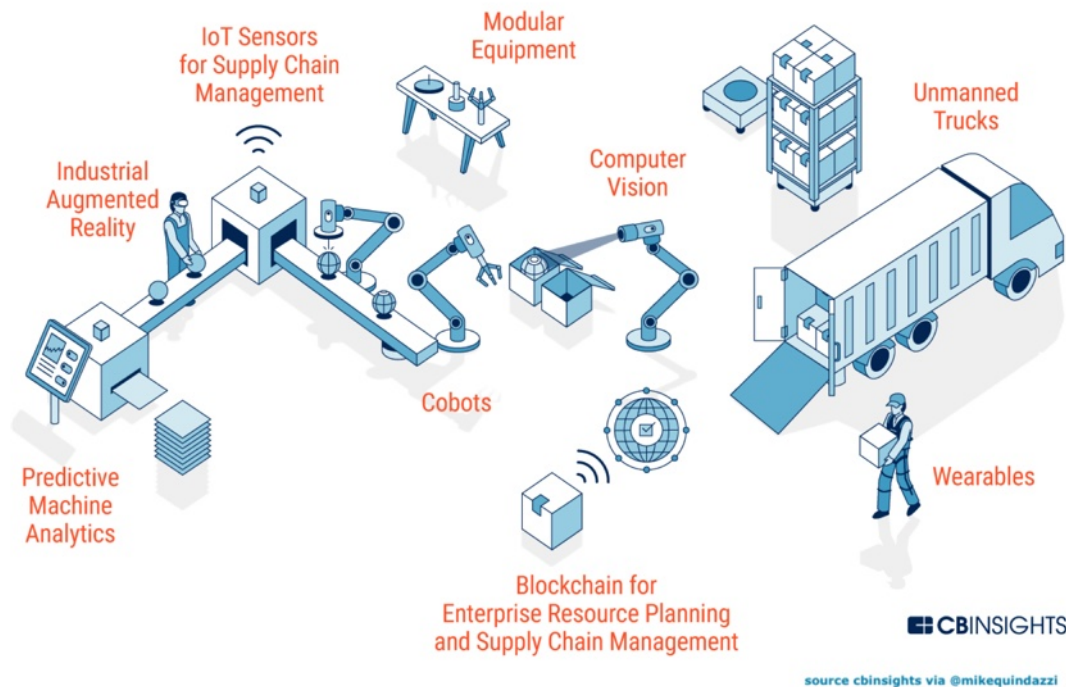
Solar Energy



Smart Devices  
Medical Devices

# AI for Smart Manufacturing

## FACTORY OF THE FUTURE



- Process Automation
  - Automatic optical inspection
  - Production scheduling
  - Automatic testing
- Predictive Analysis
  - Order forecast
  - Production / yield prediction
  - Predictive maintenance



# Inventec AI Center

## Smart Manufacturing

- Automatic optical inspection
- Order forecast
- Production scheduling
- Test automation

...

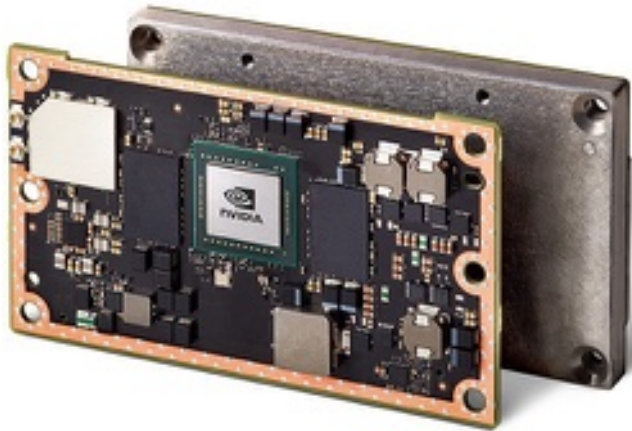
## Future Product

- AIOT / Smart City applications
- Medical devices
- Robotics
- Computation Platform

....

# Why Edge AI?

- Privacy
- Reliability
- Network Efficiency

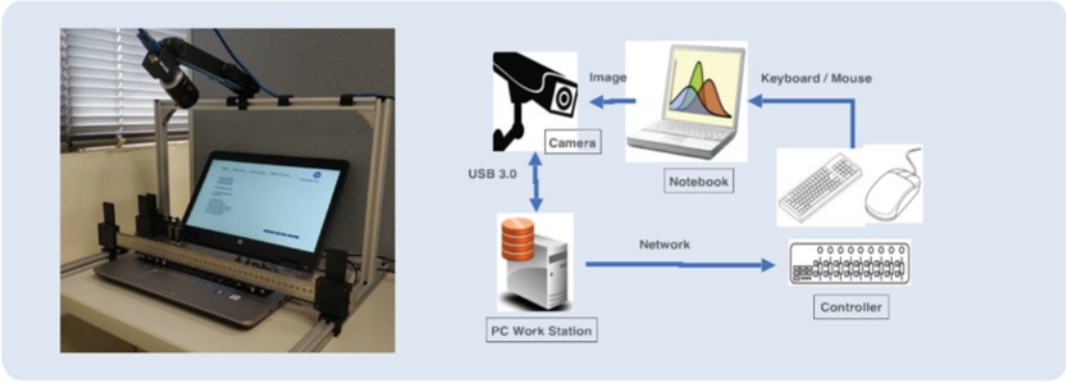


## JETSON TX2 MODULE

- NVIDIA Pascal™ Architecture GPU
- 2 Denver 64-bit CPUs + Quad-Core A57 Complex
- 8GB L128 bit DDR4 Memory
- 32GB eMMC 5.1 Flash Storage
- Connectivity to 802.11ac Wi-Fi and Bluetooth-Enabled Devices
- 10/100/1000BASE-T Ethernet



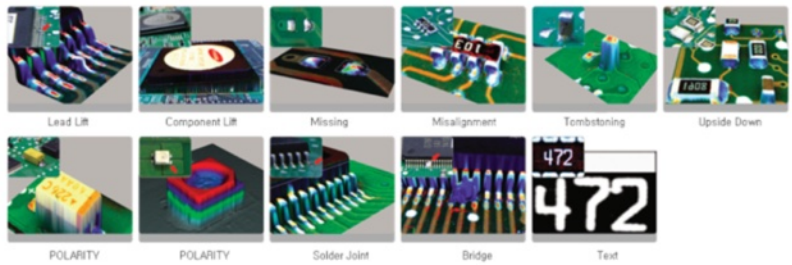
# Laptop Testing Robot



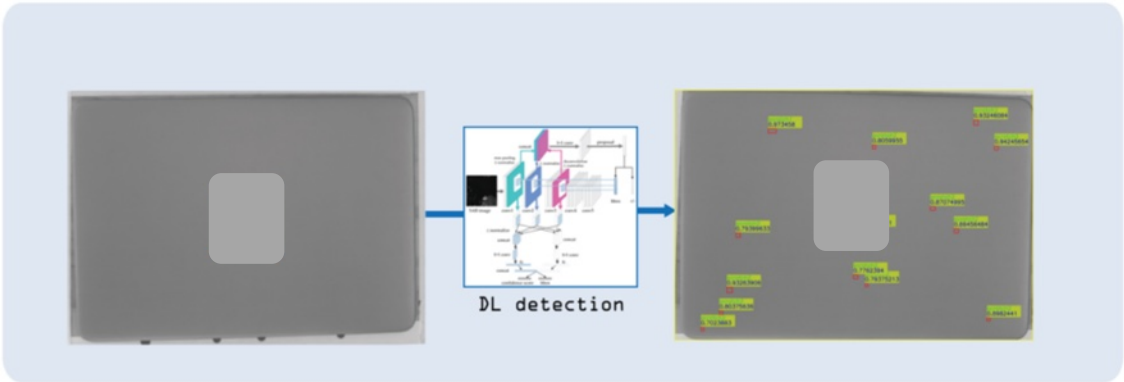
**AOI Machine**

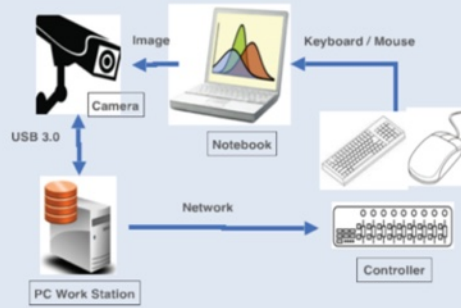
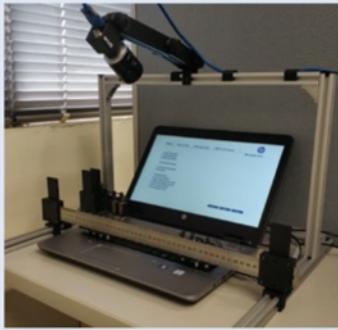
**AOI Re-inspection**

# AOI Re-inspection for SMT lines and PCBs

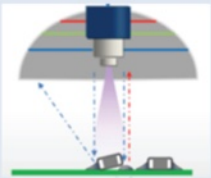


# Laptop Surface AOI





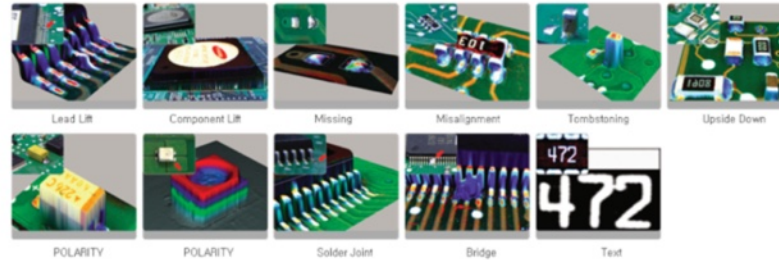
## Laptop Testing Robot



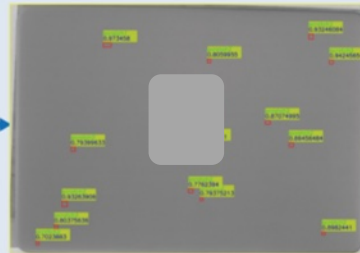
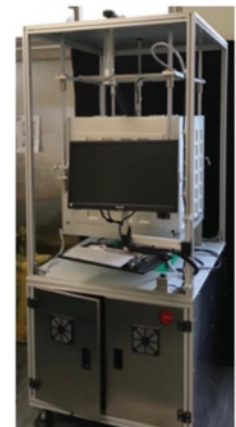
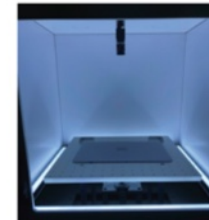
## AOI Re-inspection

AOI Machine

## AOI Re-inspection for SMT lines and PCBs



## Laptop Surface AOI



# 1. Laptop Testing Robot

## Background

- Millions of laptops manufactured every month
  - Similar basic design, many different configurations
  - Production tests are *mostly* automatic





# 1. Laptop Testing Robot

## Background

- Product approval is labor intensive
  - Takes weeks to certify for mass production
  - ~1M test assets
  - Hundreds of people running the tests



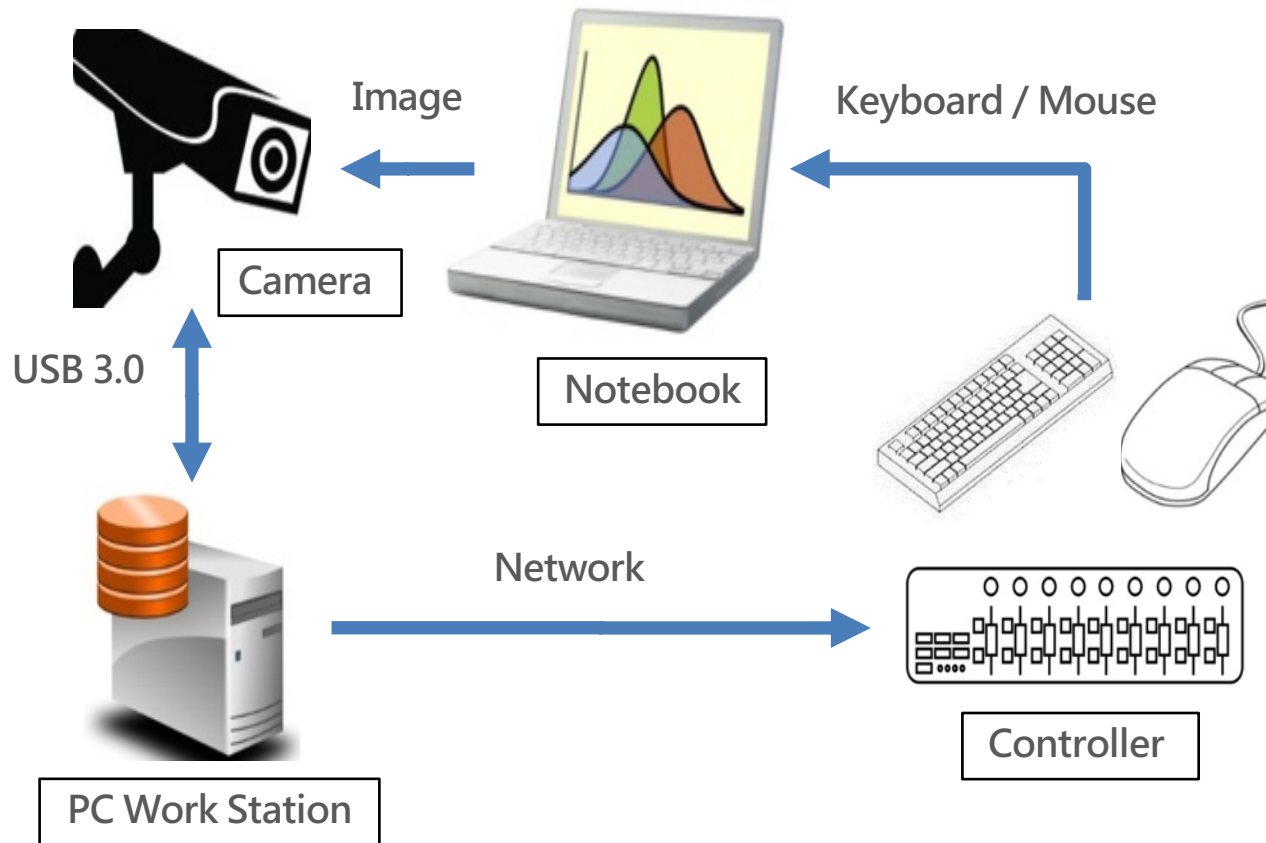


# 1. Laptop Testing Robot

Motivation (least -> most important)

- Labor cost and management
- Time-to-market
  - Regression tests take weeks / months to complete
- Increase confidence
  - The management confidence level about manual testing is only around 70%.

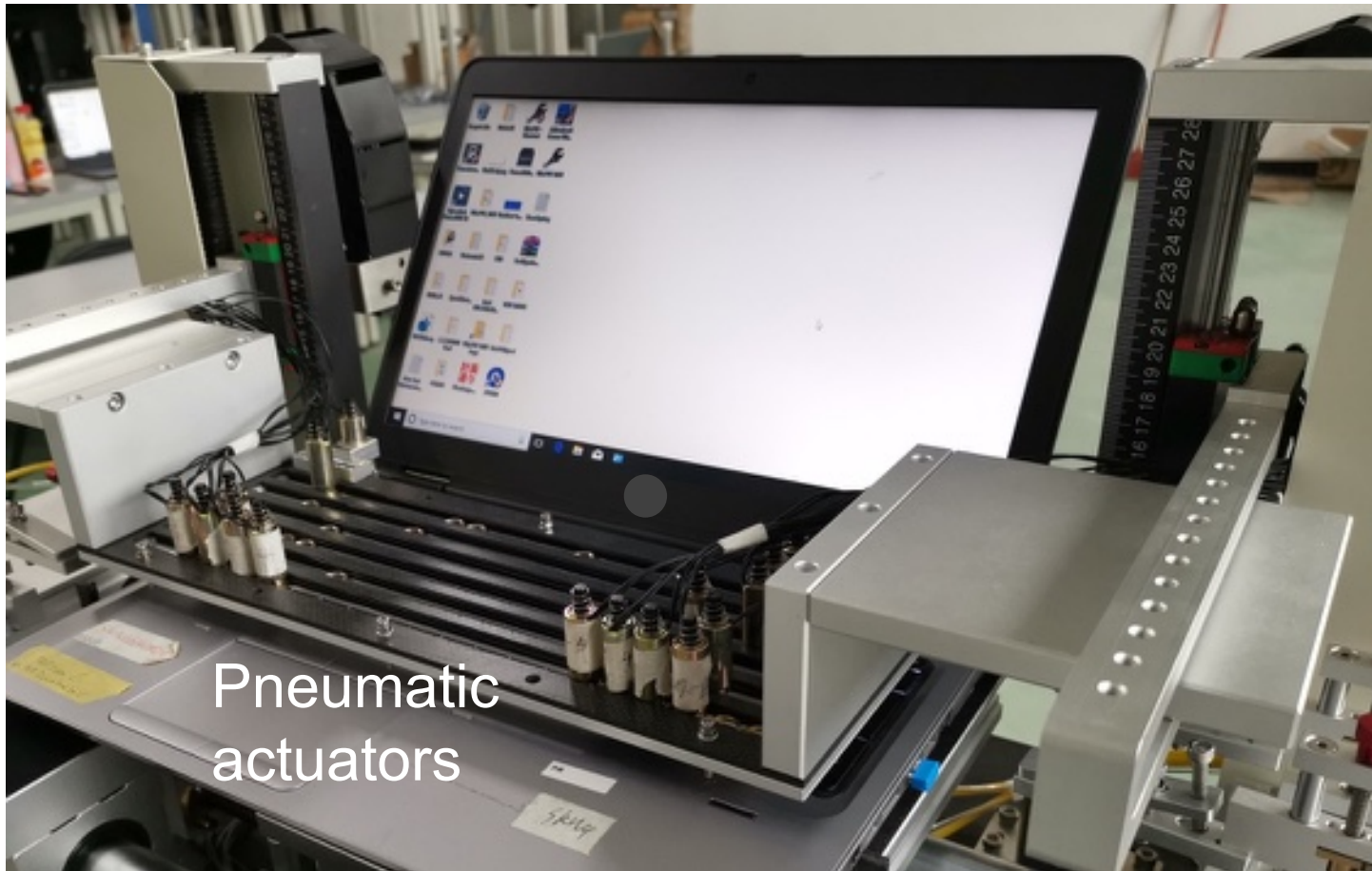
# 1. Laptop Testing Robot



By: Jimmy Ou, Wei-Chao Chen, et al. of Skywatch  
Collaboration with Joseph Shi, Jack Hung & Inventec QA Engineers

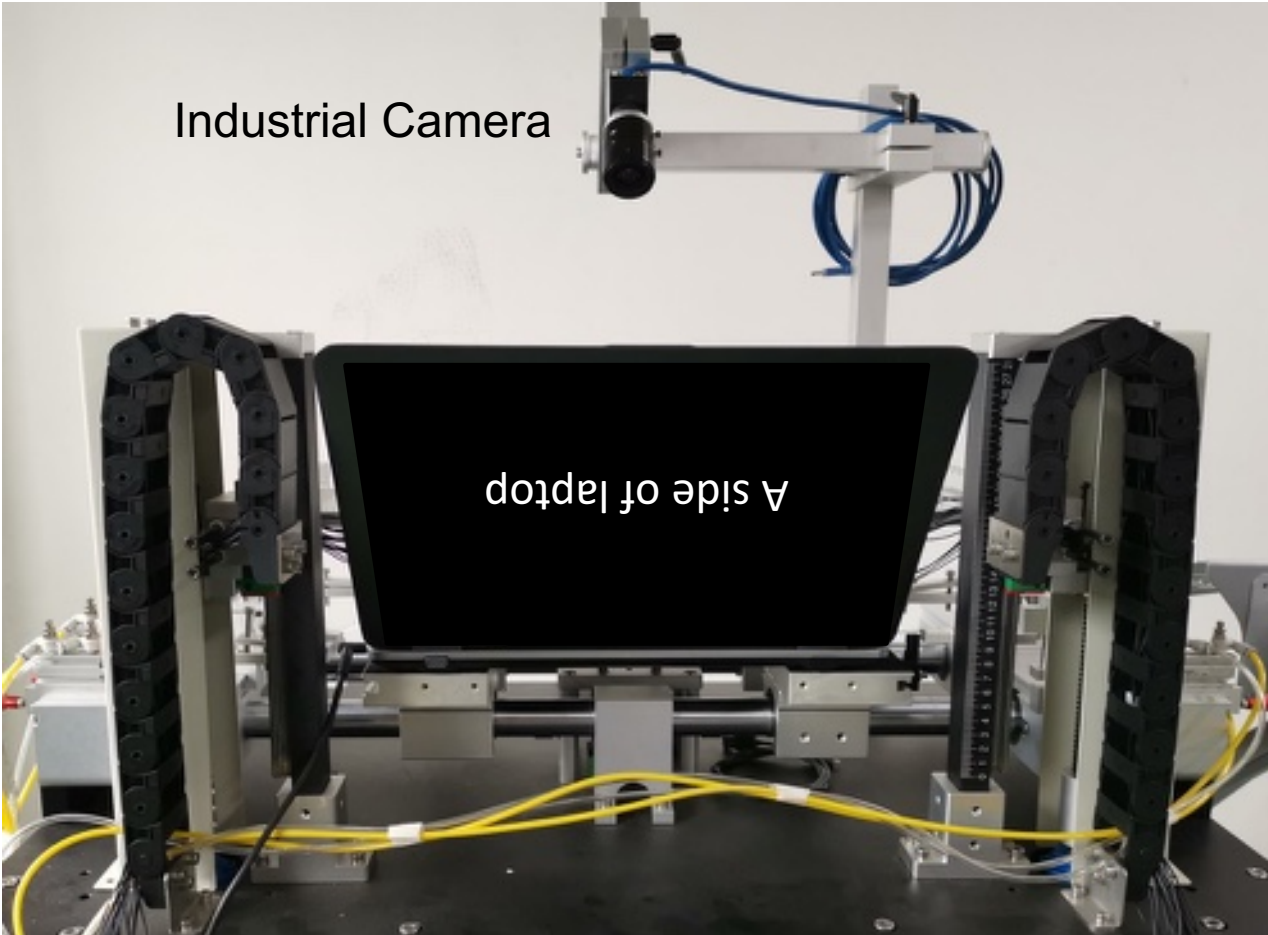
# 1. Laptop Testing Robot

Mechanical / electrical keyboard and mouse



# 1. Laptop Testing Robot

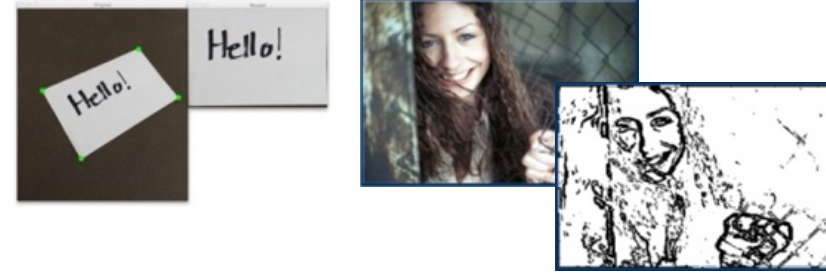
Camera with computer vision capability

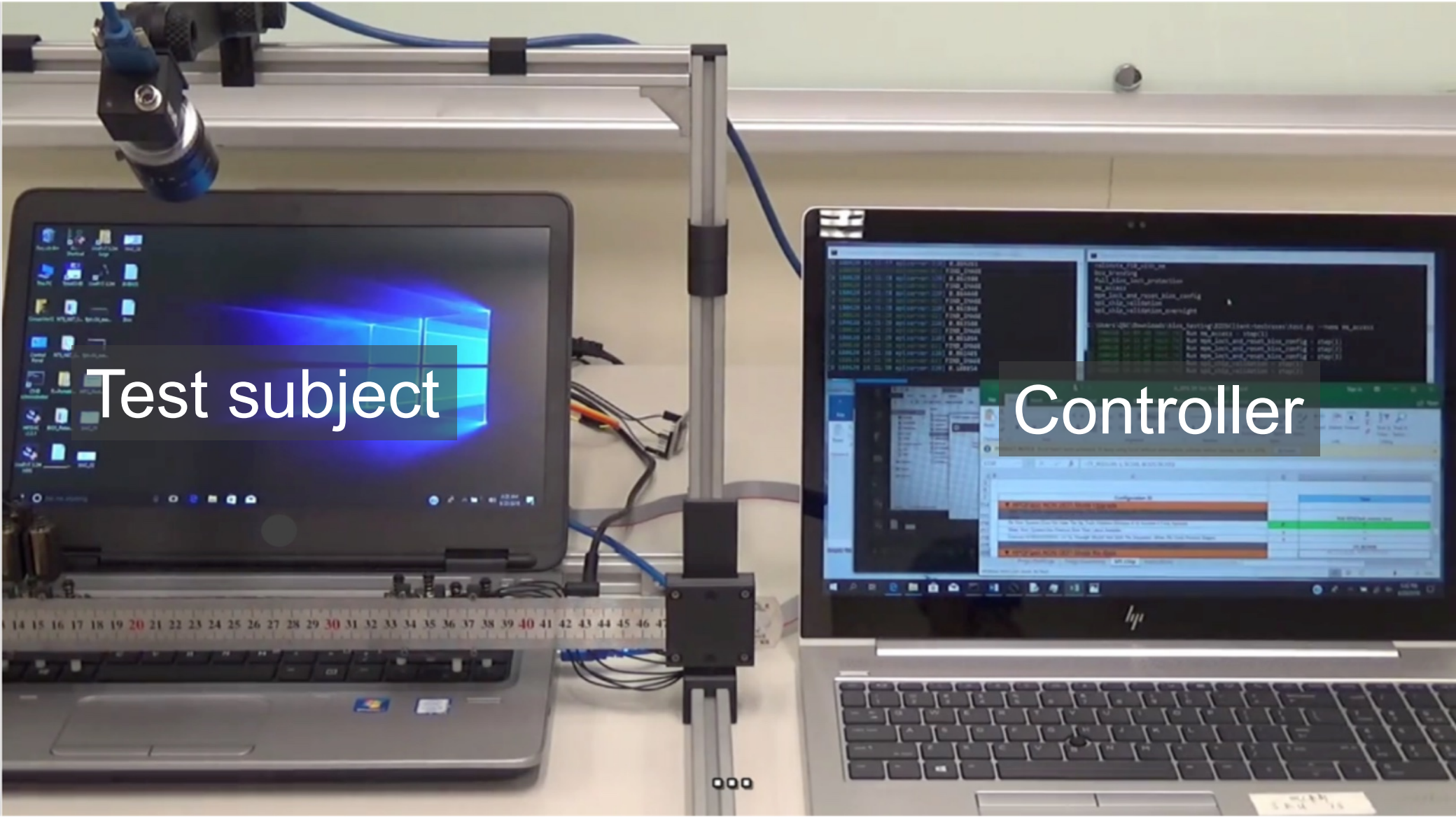




# 1. Laptop Testing Robot

- Computer Vision (OpenCV)
  - Perspective correction
  - Edge detection & denoising
  - Template matching
  
- Tesseract OCR
  - LSTM-based NN OCR engine





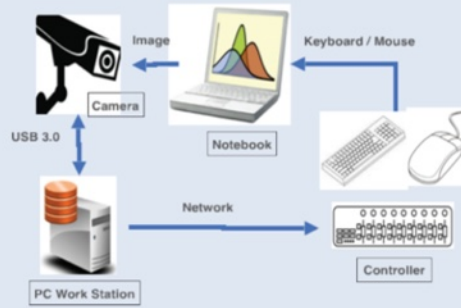
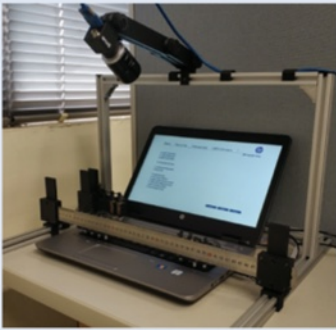
Test subject

Controller

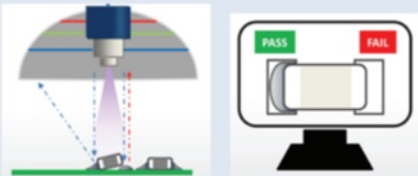
# 1. Laptop Testing Robot

## Future Opportunities

- Automatic testing script generation
  - from human-readable to machine-readable test cases
  - Close-loop verification is hard
- Scheduling optimization
  - Reshuffle test levels and orders to speed up process
- Monkey testing?



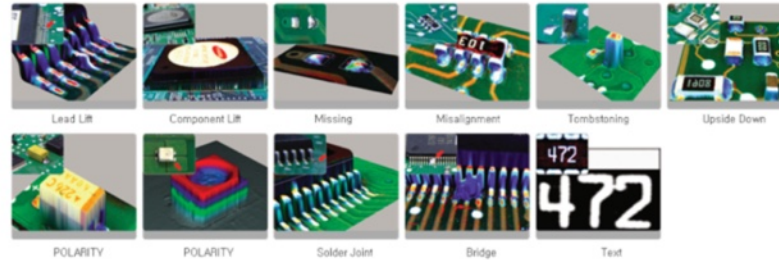
## Laptop Testing Robot



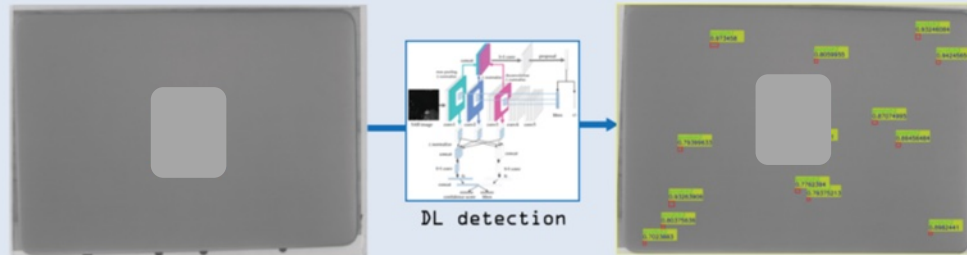
AOI Machine

## AOI Re-inspection

## AOI Re-inspection for SMT lines and PCBs



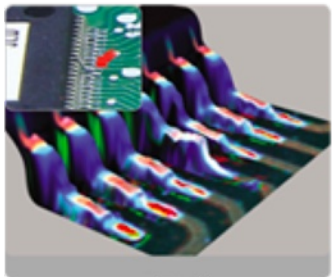
## Laptop Surface AOI





# 2: AOI Re-inspection

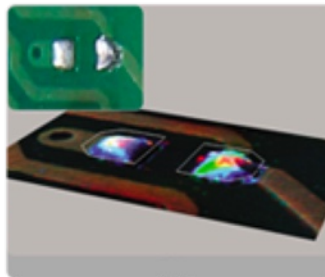
## Common SMT defects



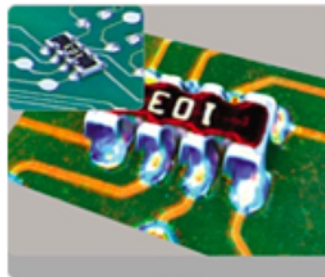
Lead Lift



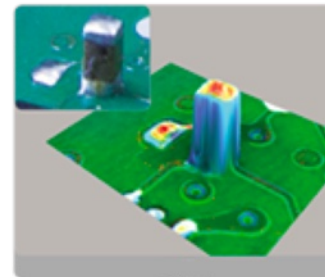
Component Lift



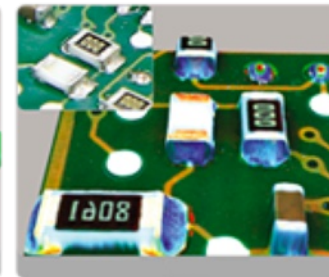
Missing



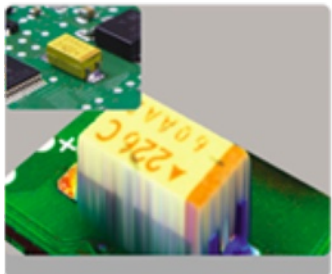
Misalignment



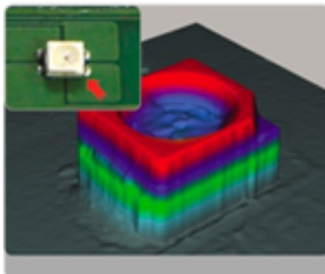
Tombstoning



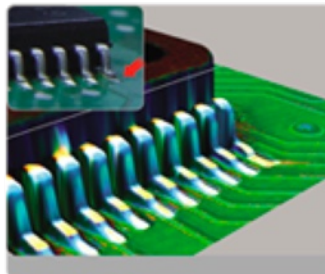
Upside Down



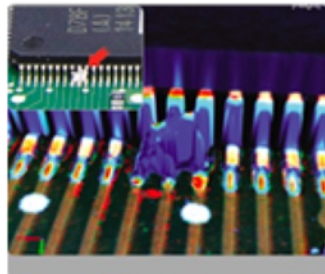
POLARITY



POLARITY



Solder Joint

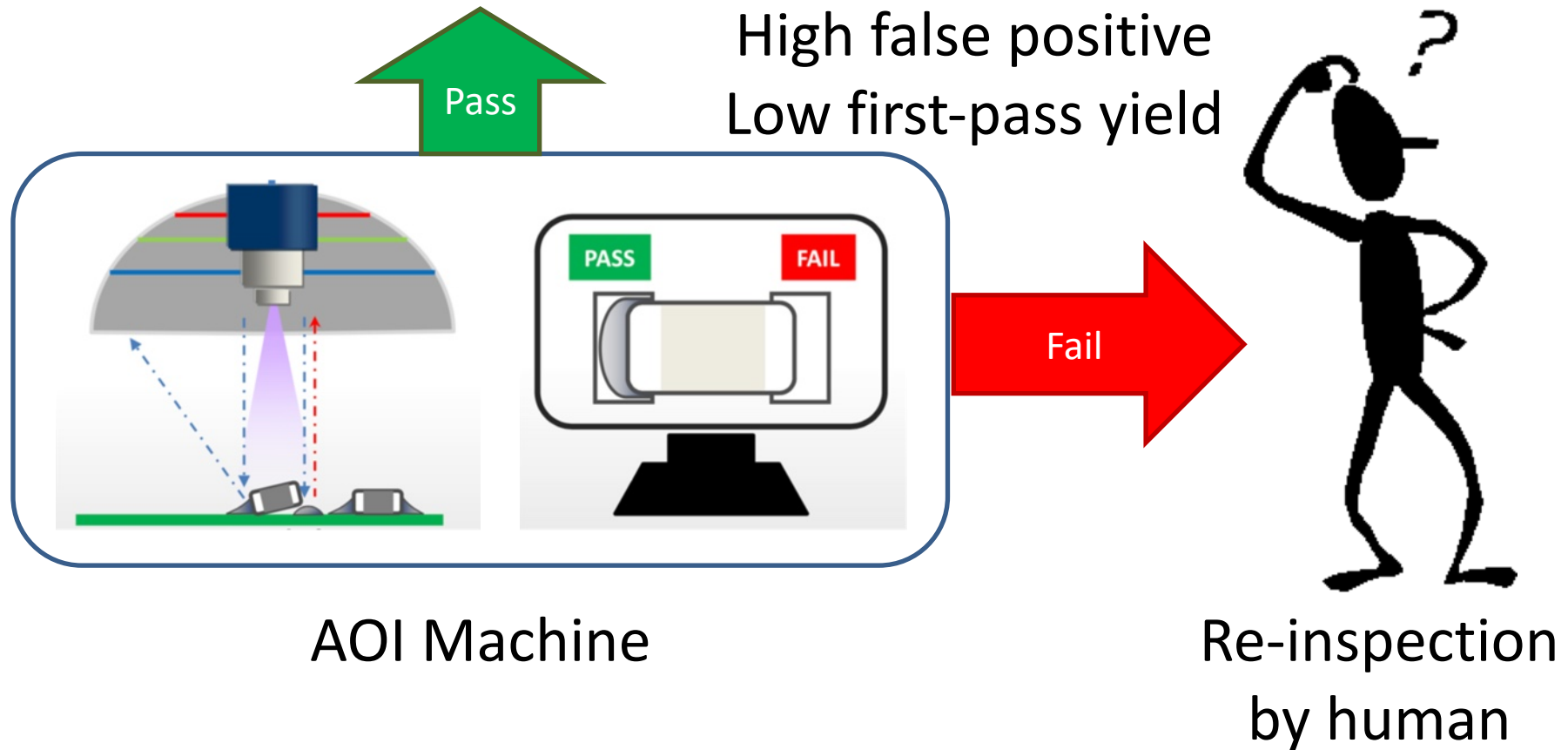


Bridge

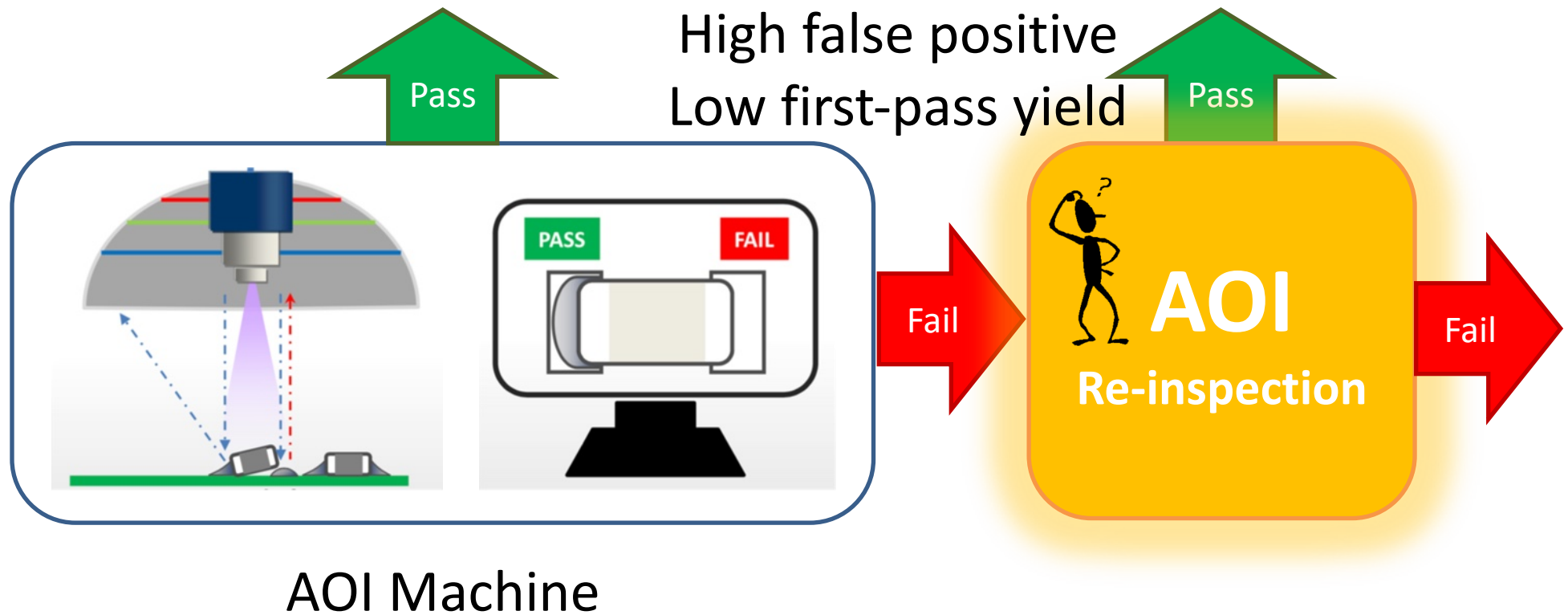


Text

## 2: AOI Re-inspection

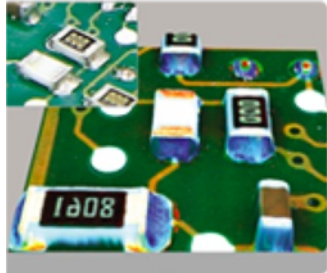


## 2: AOI Re-inspection

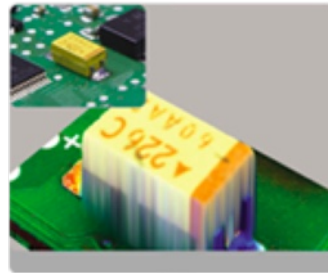


By: 許正翰, 呂明峻, 張文于 of NTU & advised by Wei-Chao Chen of Skywatch & NTU & Trista Chen of Inventec  
Data & domain knowledge provided by Jessie Huang, Peter Chu @ TAO, among others

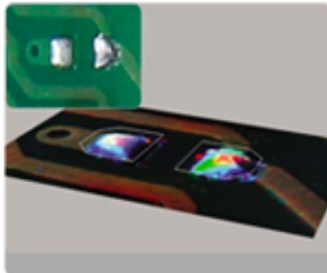
# 2: AOI Re-inspection



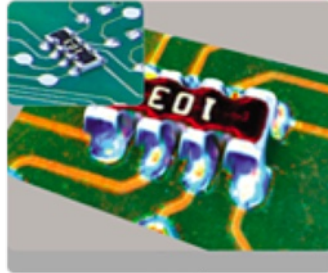
Upside Down



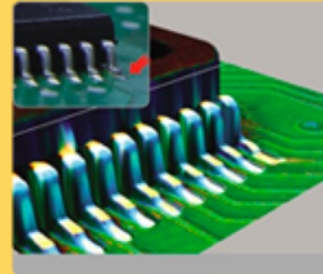
POLARITY



Missing



Misalignment



Solder Joint



Lead Lift

Deep Learning  
defects w/ intuitive descriptions

Traditional  
Computer Vision  
defects w/ well-defined rules



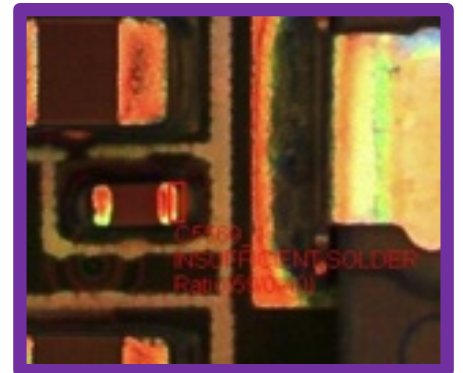
# 2: AOI Re-inspection

## 0. Excess Solder (true)

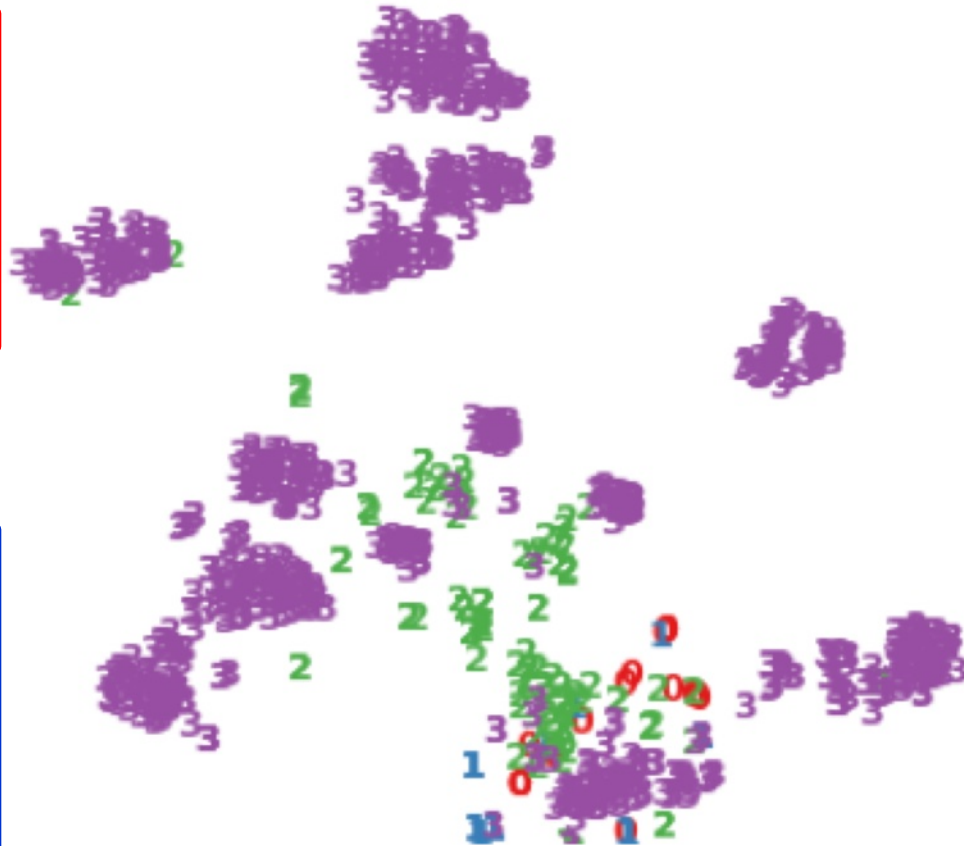


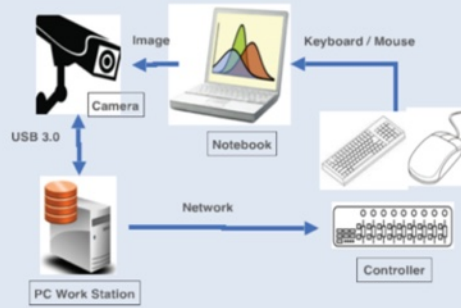
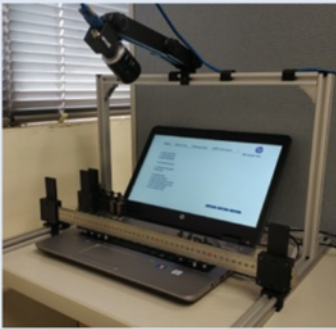
1. Excess Solder  
(false positive → pass )

## 2. Insuff. Solder (true)

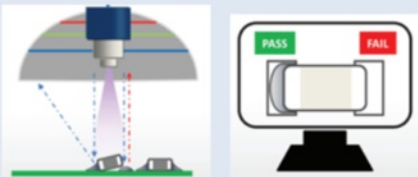


2. Insuff. Solder  
(false positive → pass)





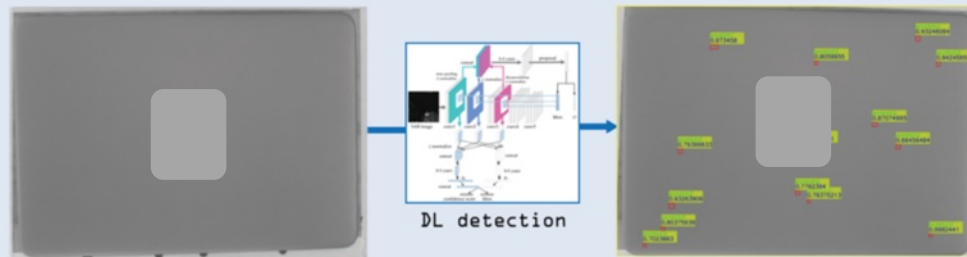
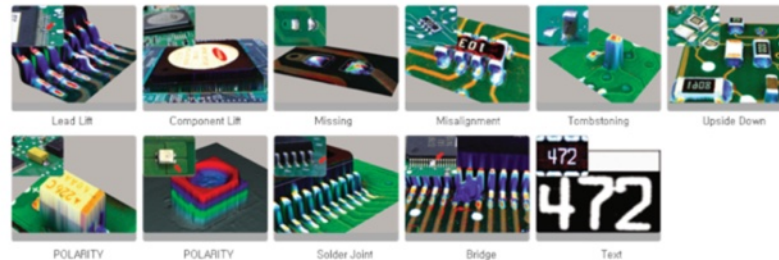
## Laptop Testing Robot



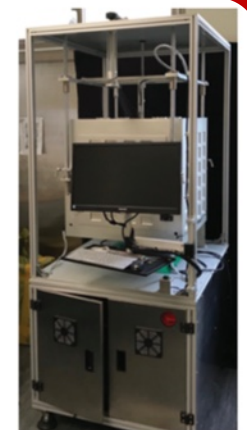
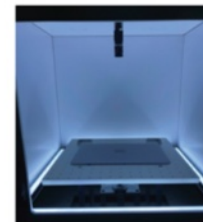
AOI Machine

## AOI Re-inspection

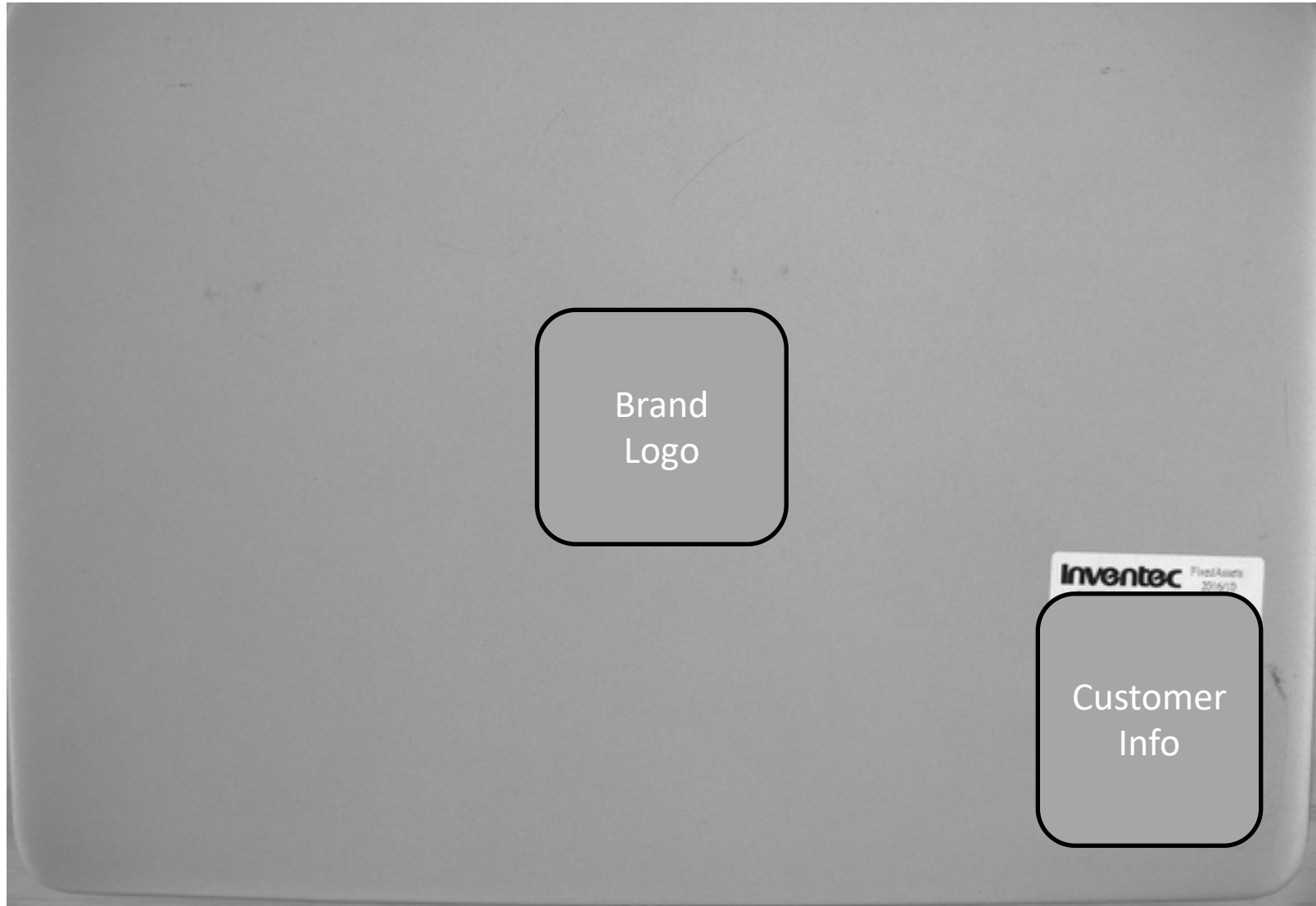
## AOI Re-inspection for SMT lines and PCBs



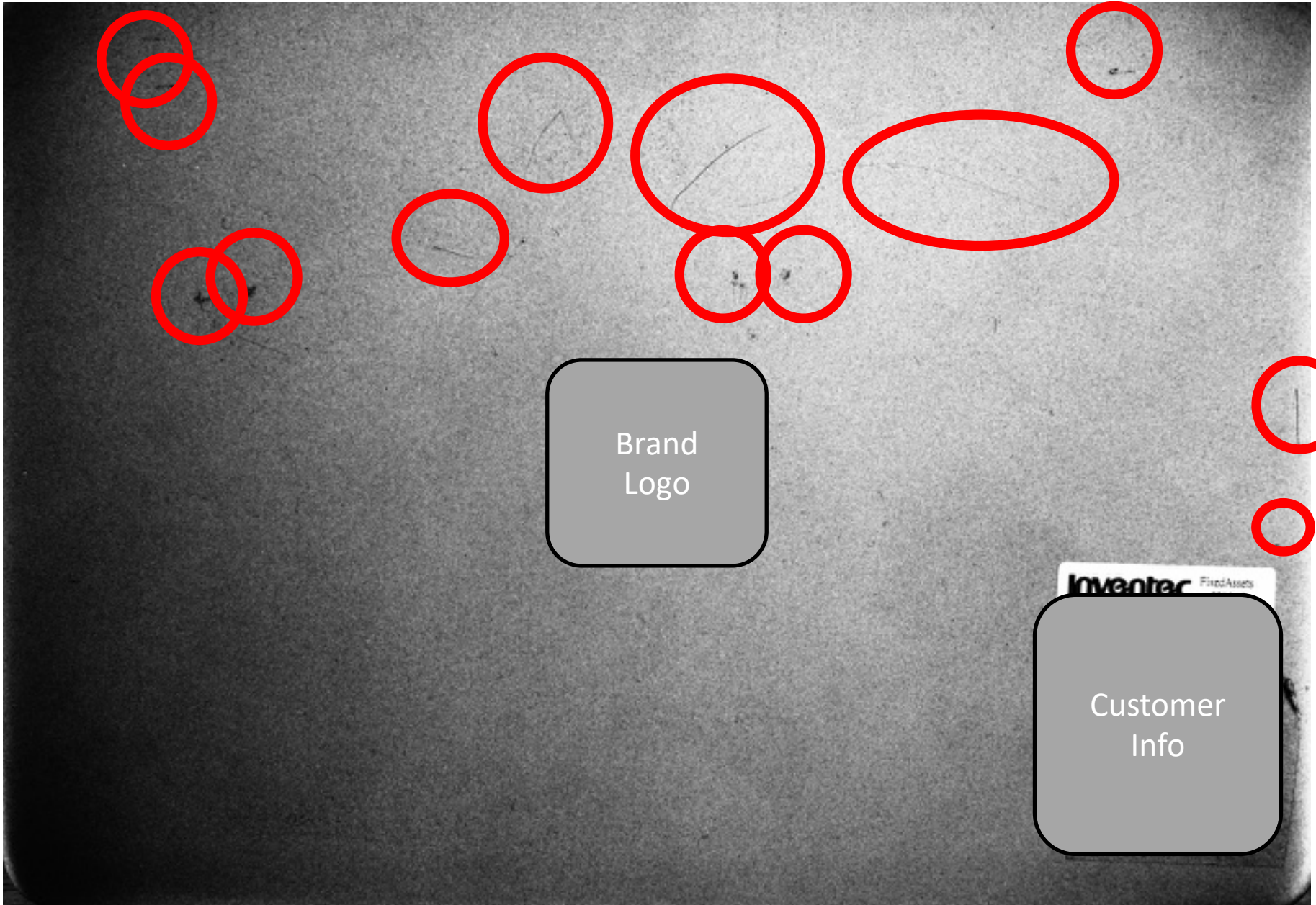
## Laptop Surface AOI



### 3. Laptop Surface AOI





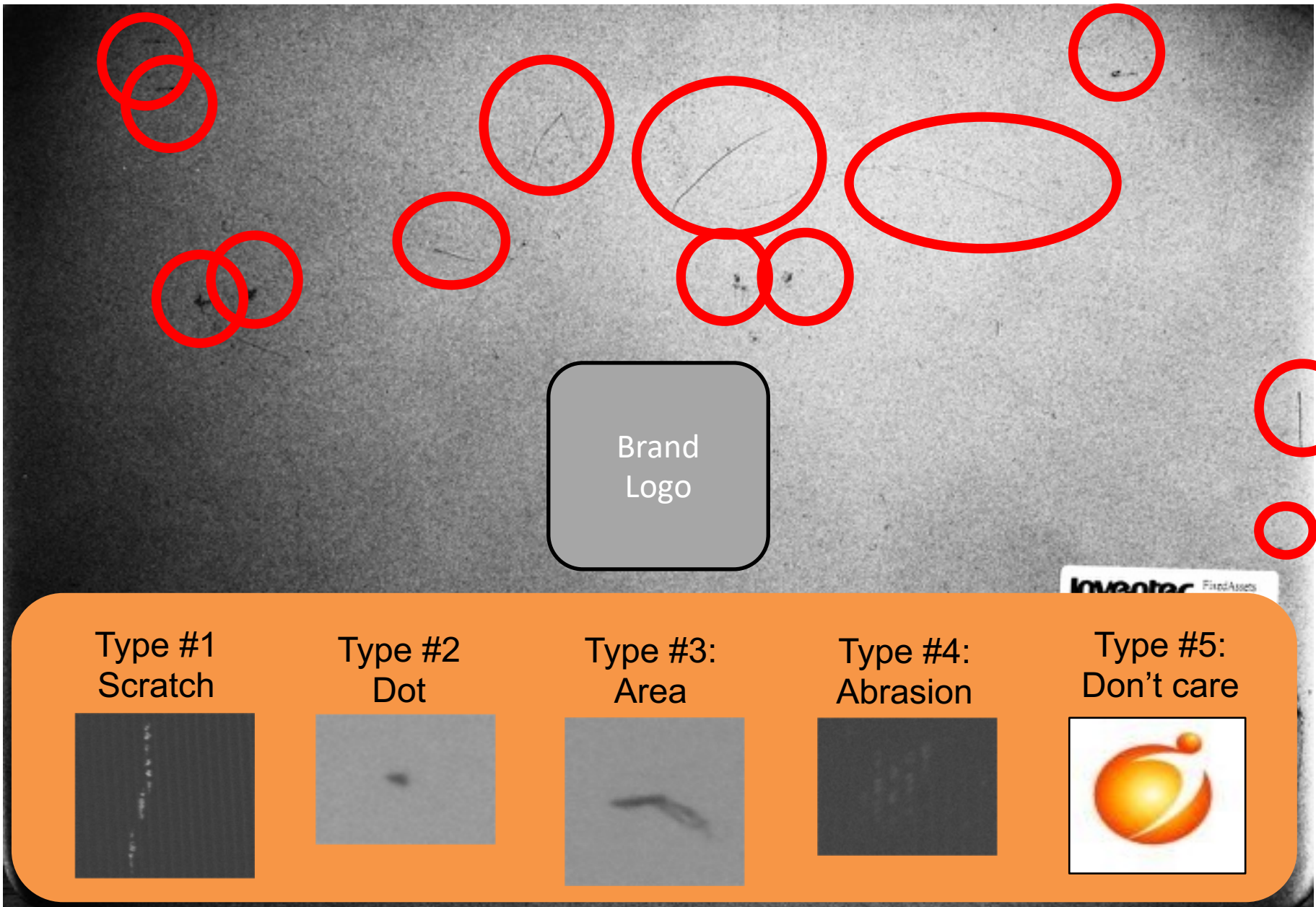


Brand  
Logo

Customer  
Info

Inventec Fixed Assets



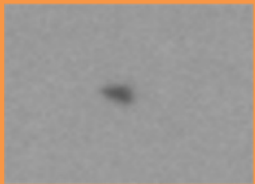


Brand  
Logo

Type #1  
Scratch



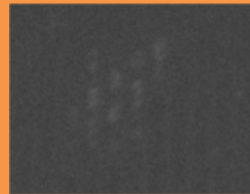
Type #2  
Dot



Type #3:  
Area



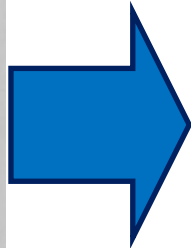
Type #4:  
Abrasion



Type #5:  
Don't care



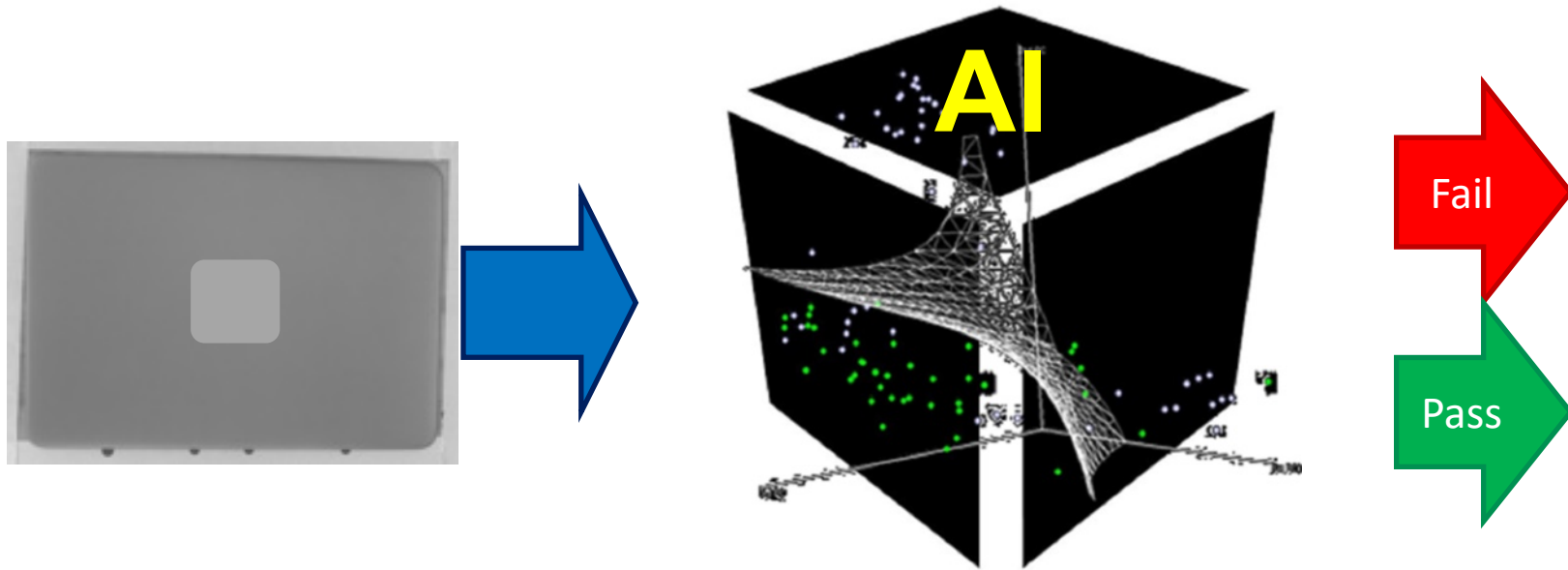
### 3. Laptop Surface AOI



Defect type	Class A spec	Class B spec
Scratch	Length: 12mm Acceptable: 2 lines	Length: 20mm, Acceptable: 2 line
Dent	0.5 mm <sup>2</sup> < size < 0.7mm <sup>2</sup> Acceptable: 2 points	0.5 mm <sup>2</sup> < size < 1mm <sup>2</sup> Acceptable: 3 points
...		

Human readable rules

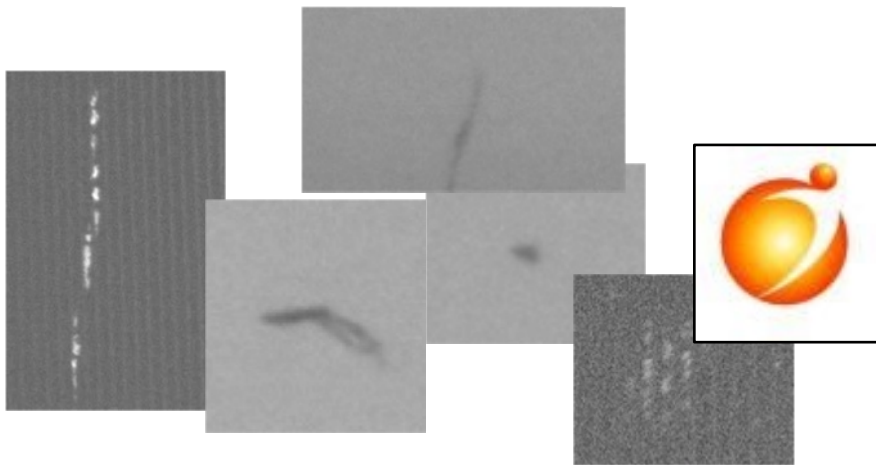
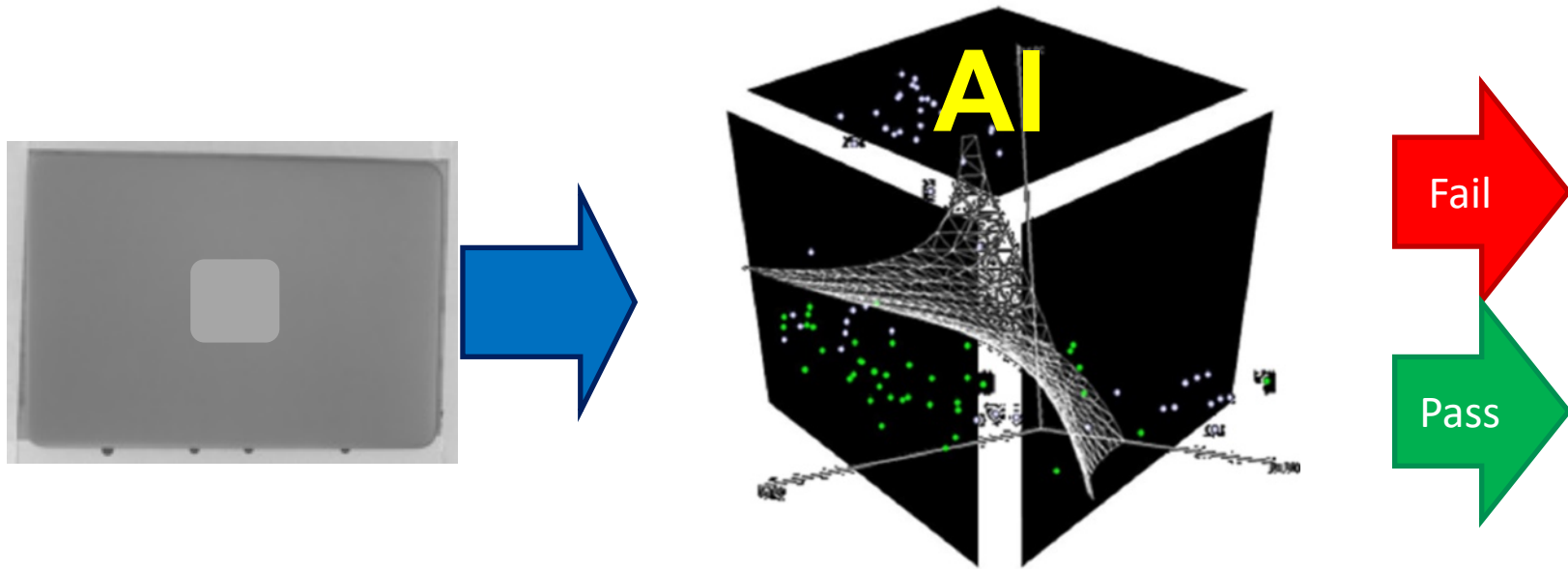
### 3. Laptop Surface AOI



Defect type	Class A spec	Class B spec
Scratch	Length: 12mm Acceptable: 2 lines	Length: 20mm, Acceptable: 2 line
Dent	$0.5 \text{ mm}^2 < \text{size} < 0.7 \text{ mm}^2$ Acceptable: 2 points	$0.5 \text{ mm}^2 < \text{size} < 1 \text{ mm}^2$ Acceptable: 3 points
...		

Human readable rules

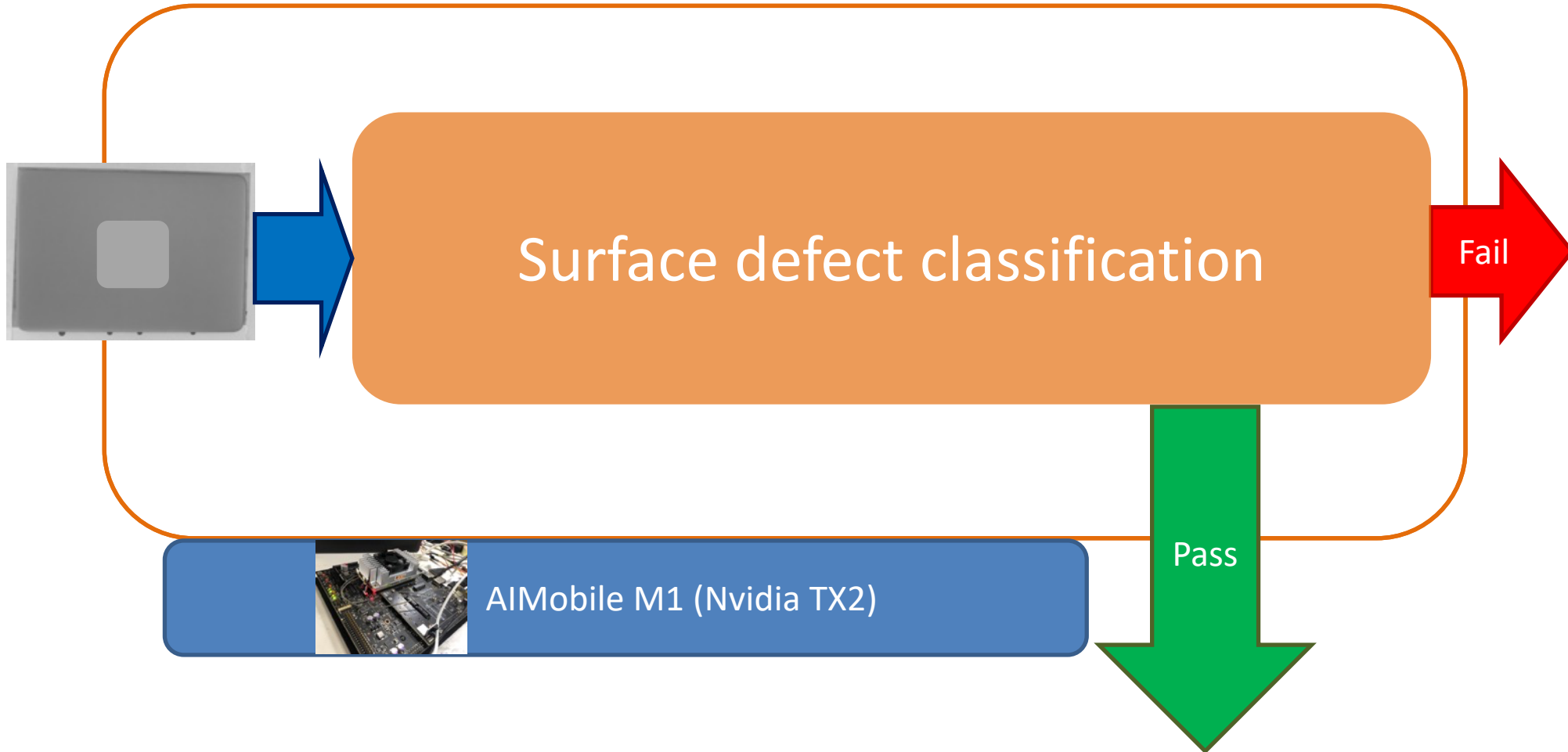
# 3. Laptop Surface AOI



Training data

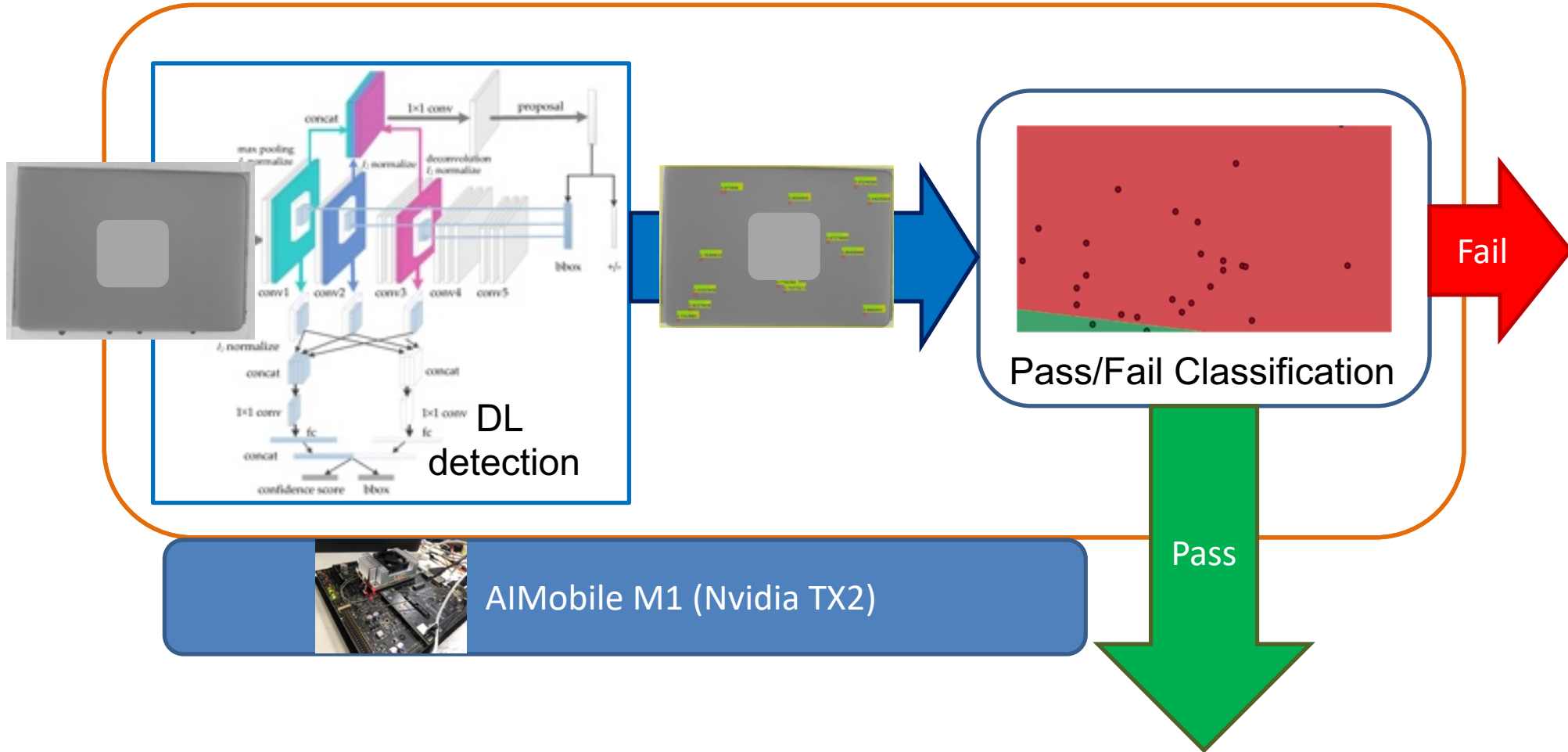


# 3. Laptop Surface AOI

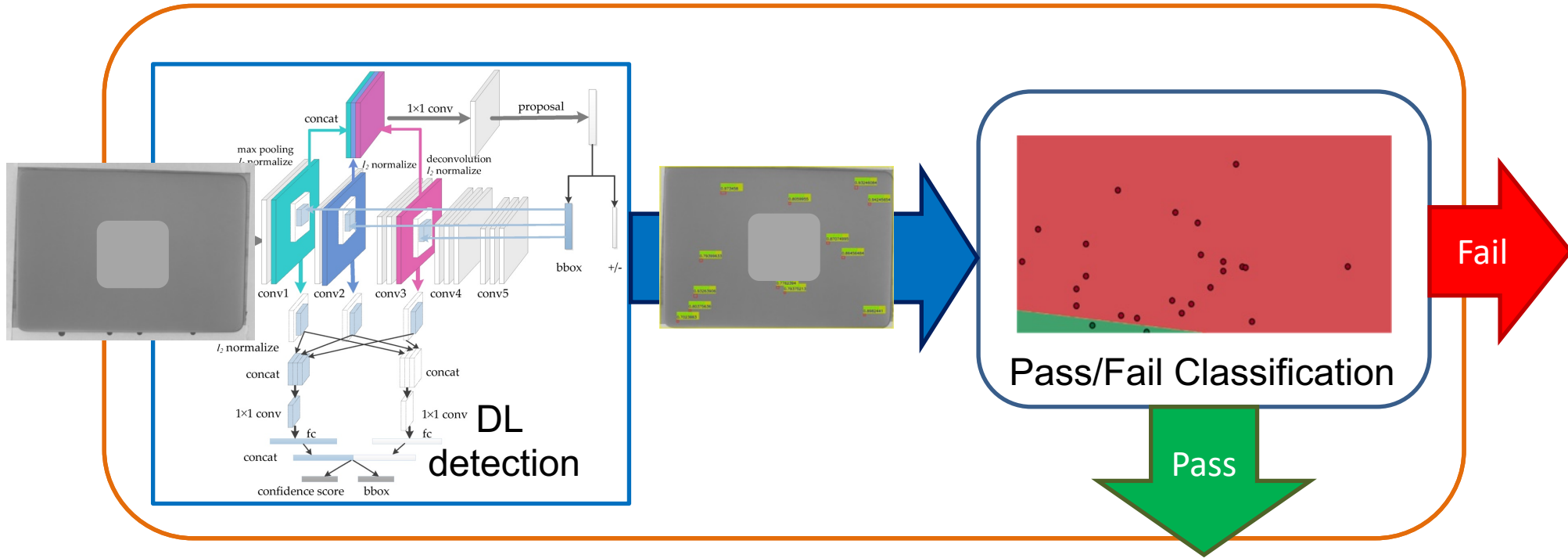


By: Benson Lin of Skywatch, Trista Chen and Irene Chen of Inventec, Wei-Chao Chen of Skywatch & Inventec  
In collaboration with Steven Wang, Sing-Wang Chen, Alfa Shih & Tim Zhang et al @ ICC  
Machine manufactured by Jerry Tseng @ Leh-Yeh; Edge machine provided by Mark Lu @ AIMobile

# 3. Laptop Surface AOI



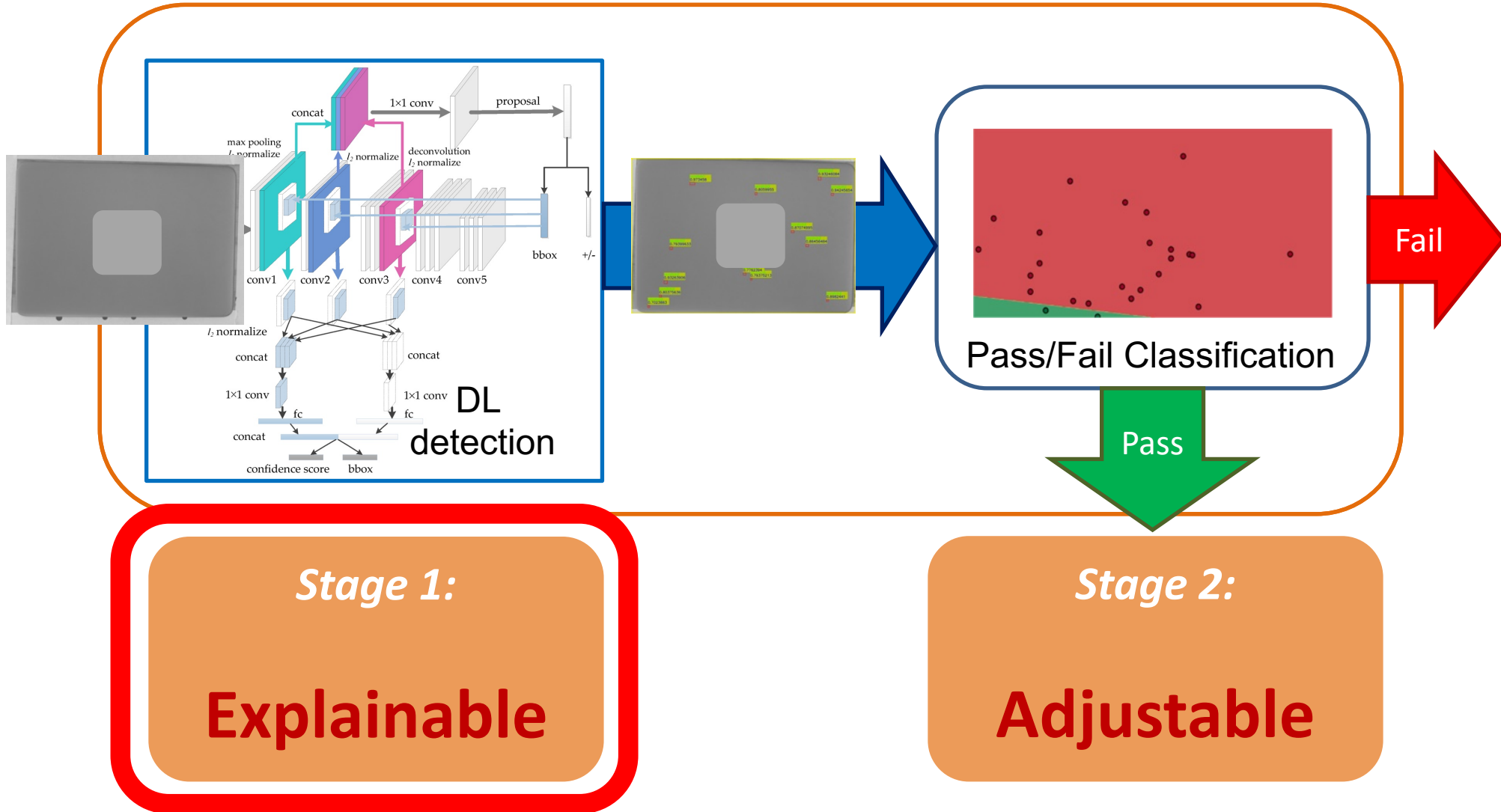
# 3. Laptop Surface AOI



*Stage 1:*  
**Explainable**

*Stage 2:*  
**Adjustable**

# 3. Laptop Surface AOI

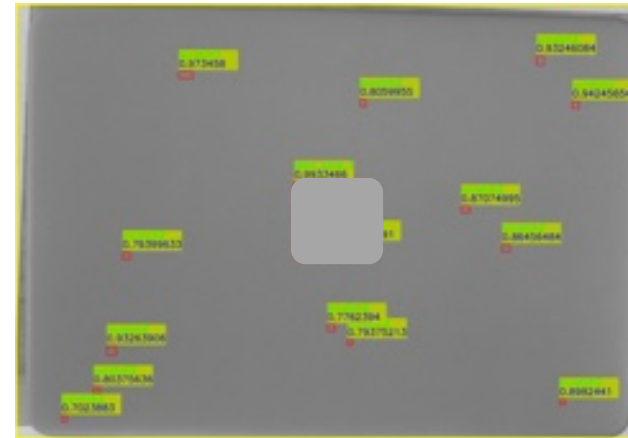




# 3. Laptop Surface AOI – Explainable

Why did it **pass**/**fail**?

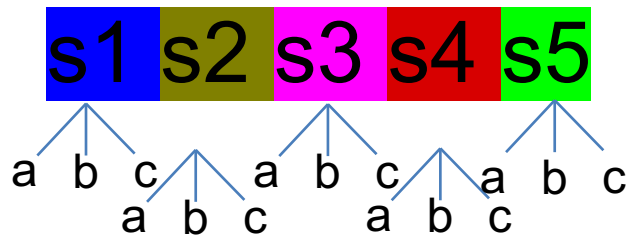
- Defect type
- Defect count
- Defect size



Defect type	Class A spec	Class B spec
Scratch	Length: 12mm Acceptable: 2 lines	Length: 20mm, Acceptable: 2 lines
Dent	0.5 mm <sup>2</sup> < size < 0.7mm <sup>2</sup> Acceptable: 2 points	0.5 mm <sup>2</sup> < size < 1mm <sup>2</sup> Acceptable: 3 points
...		

# Defect class cluster analysis

Defect types:



15 classes ?

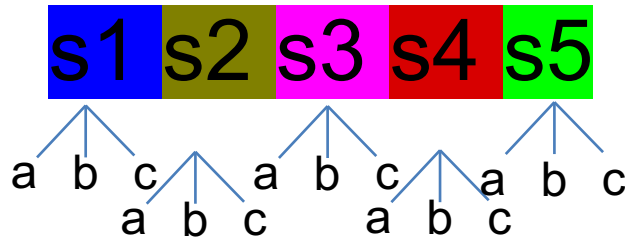
5 classes ?



Stage-1 multi-class detector

# Defect class cluster analysis

Defect types:



~~15 classes~~

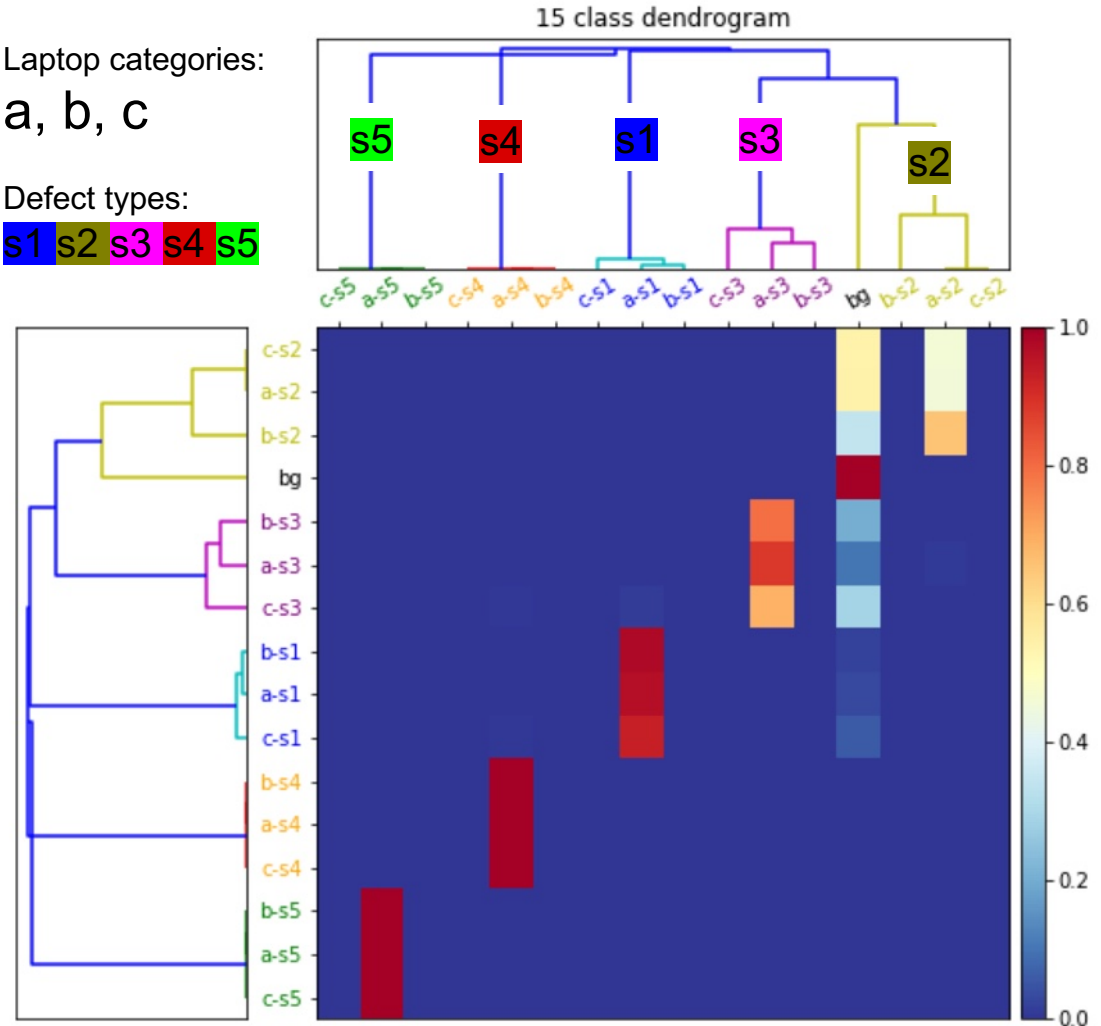
5 classes

Output

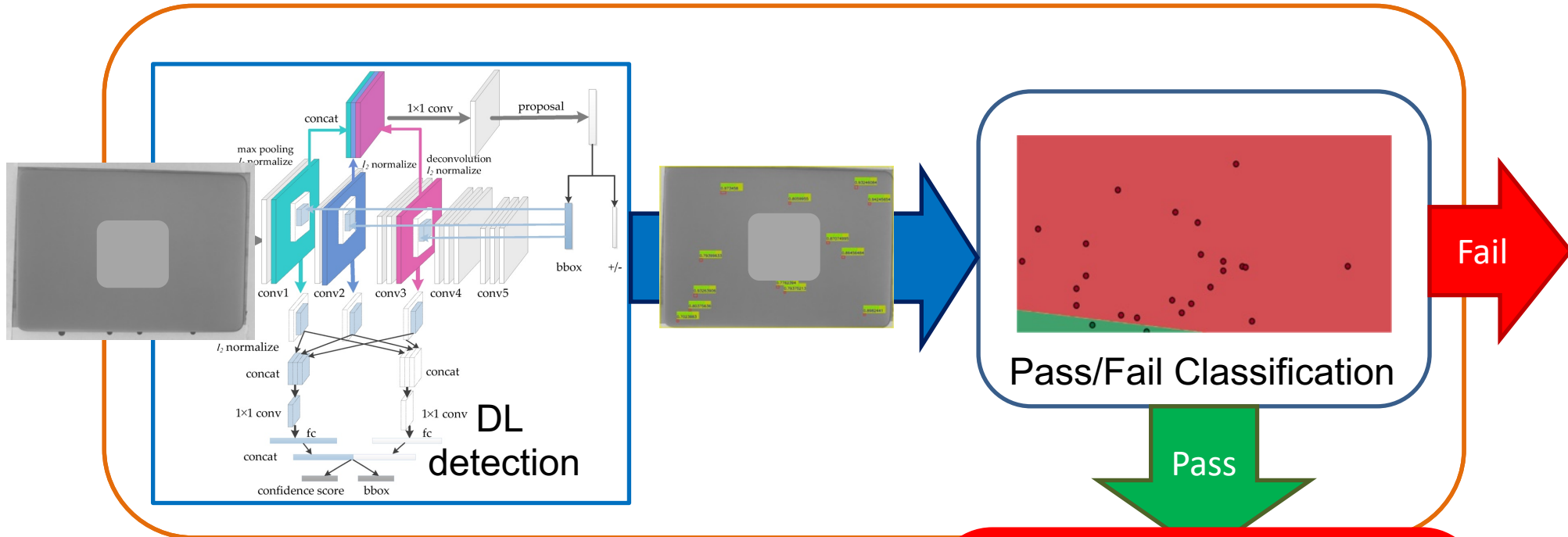
Laptop categories:  
a, b, c

Defect types:  
s1 s2 s3 s4 s5

Input



# 3. Laptop Surface AOI

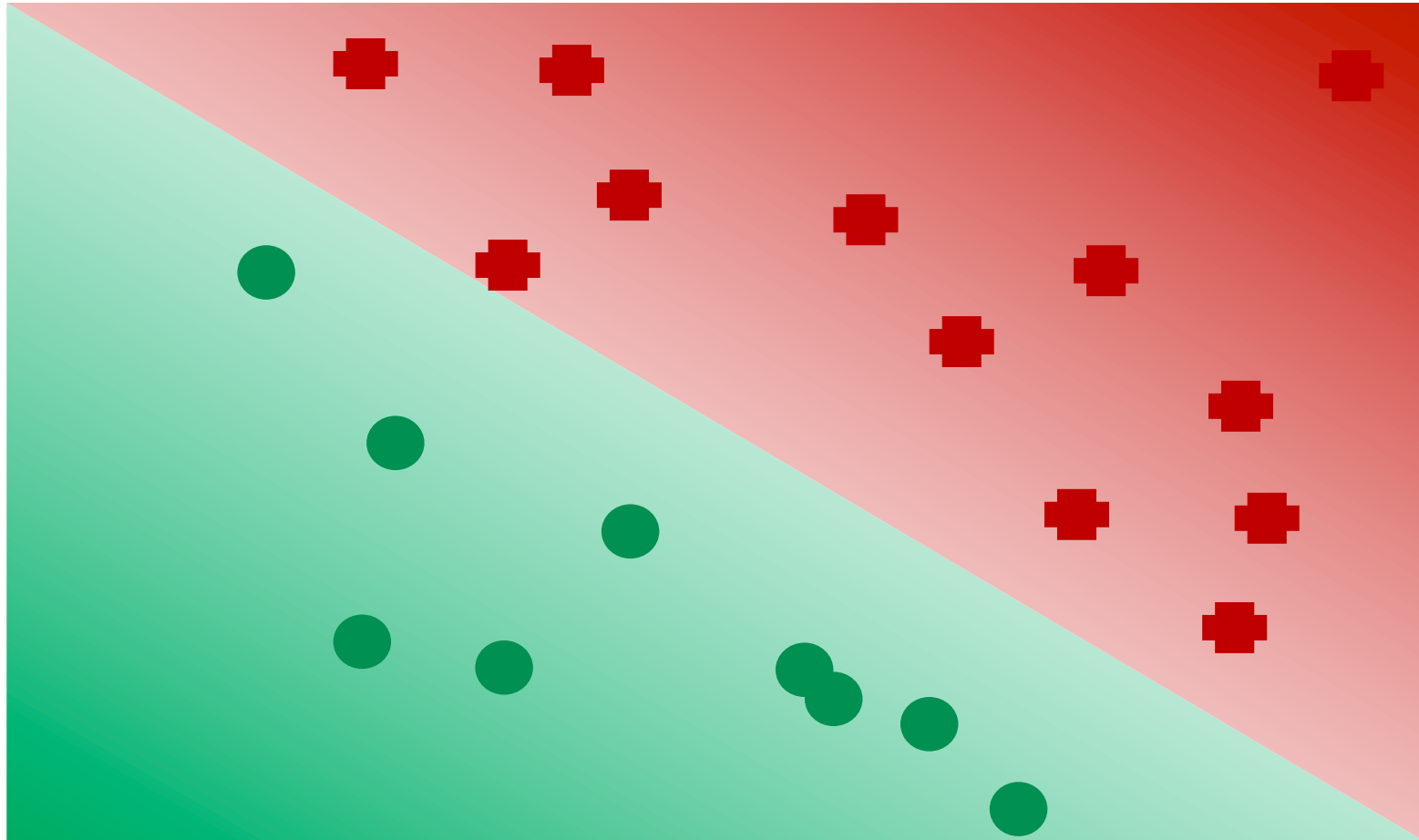
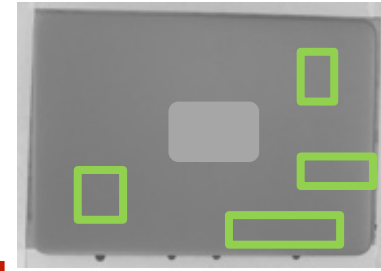


*Stage 1:*  
**Explainable**

*Stage 2:*  
**Adjustable**



# 3. Laptop Surface AOI – Adjustable

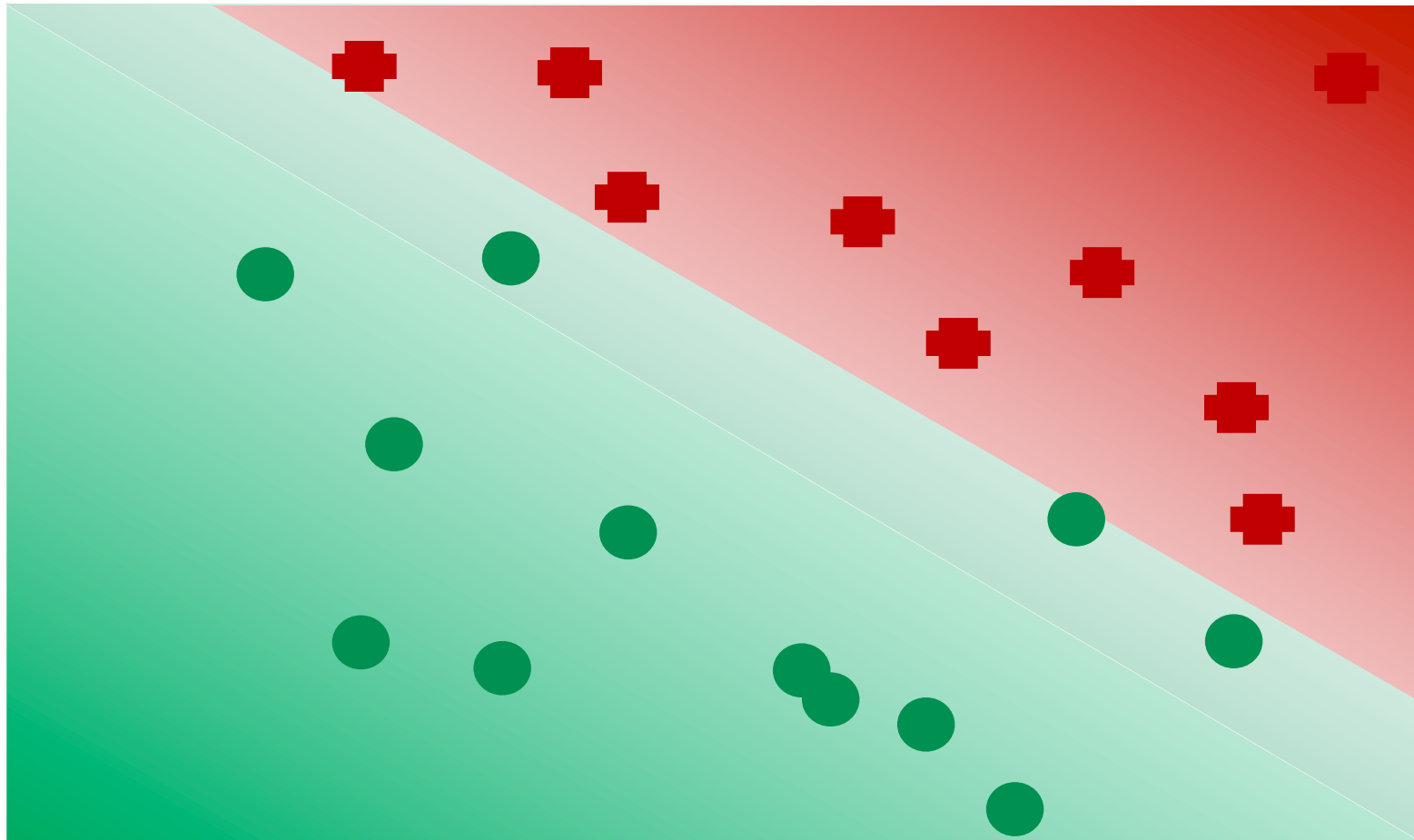
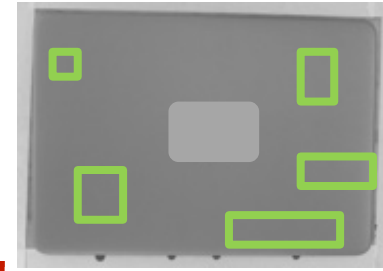


Class A

2 lines 2 dots

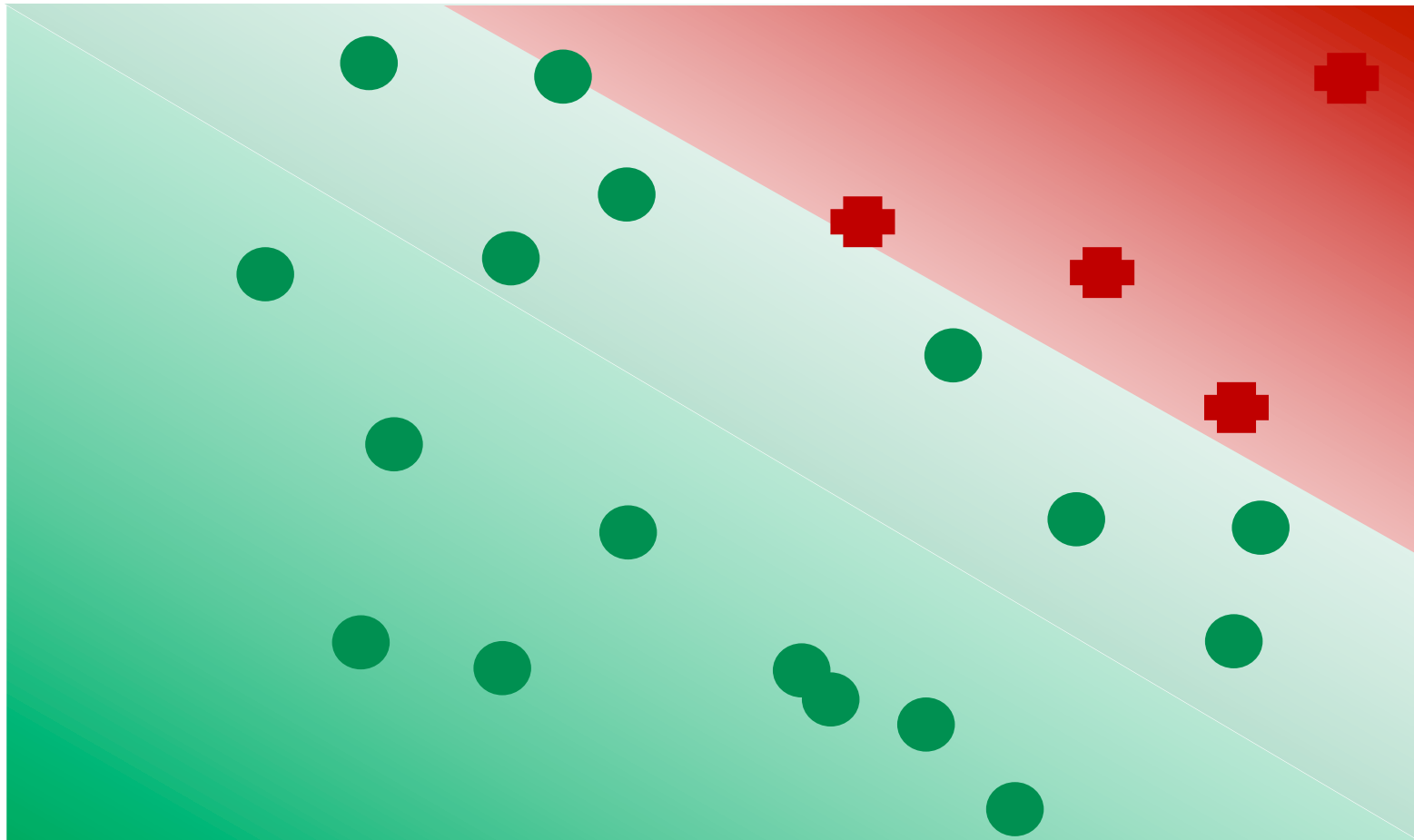
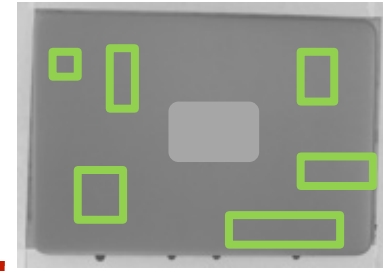
**Inventec**

# 3. Laptop Surface AOI – Adjustable



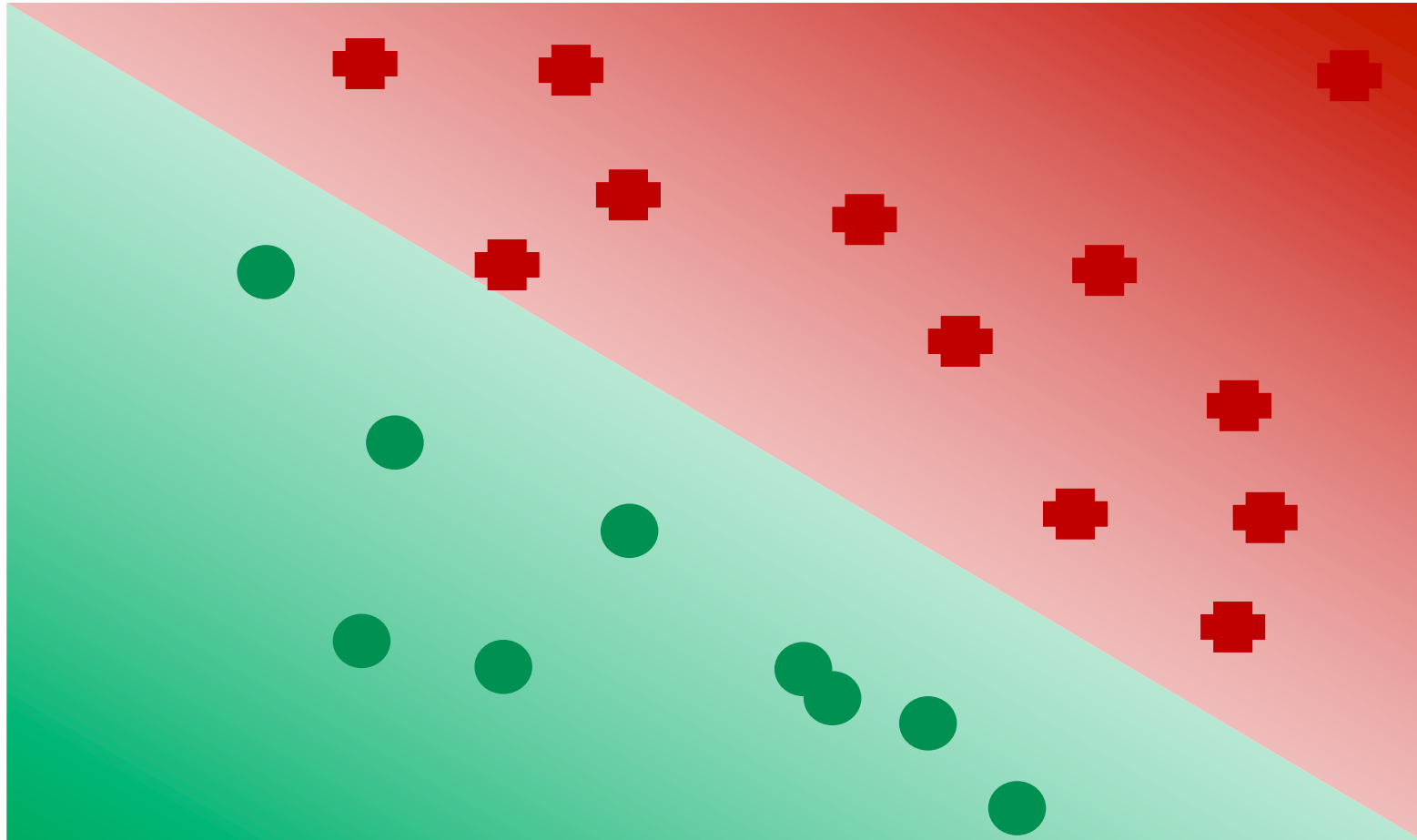
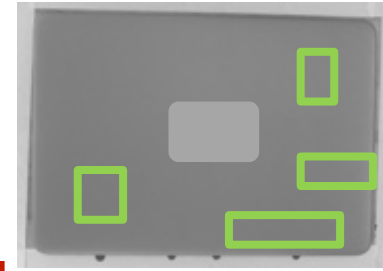
Class B

# 3. Laptop Surface AOI – Adjustable



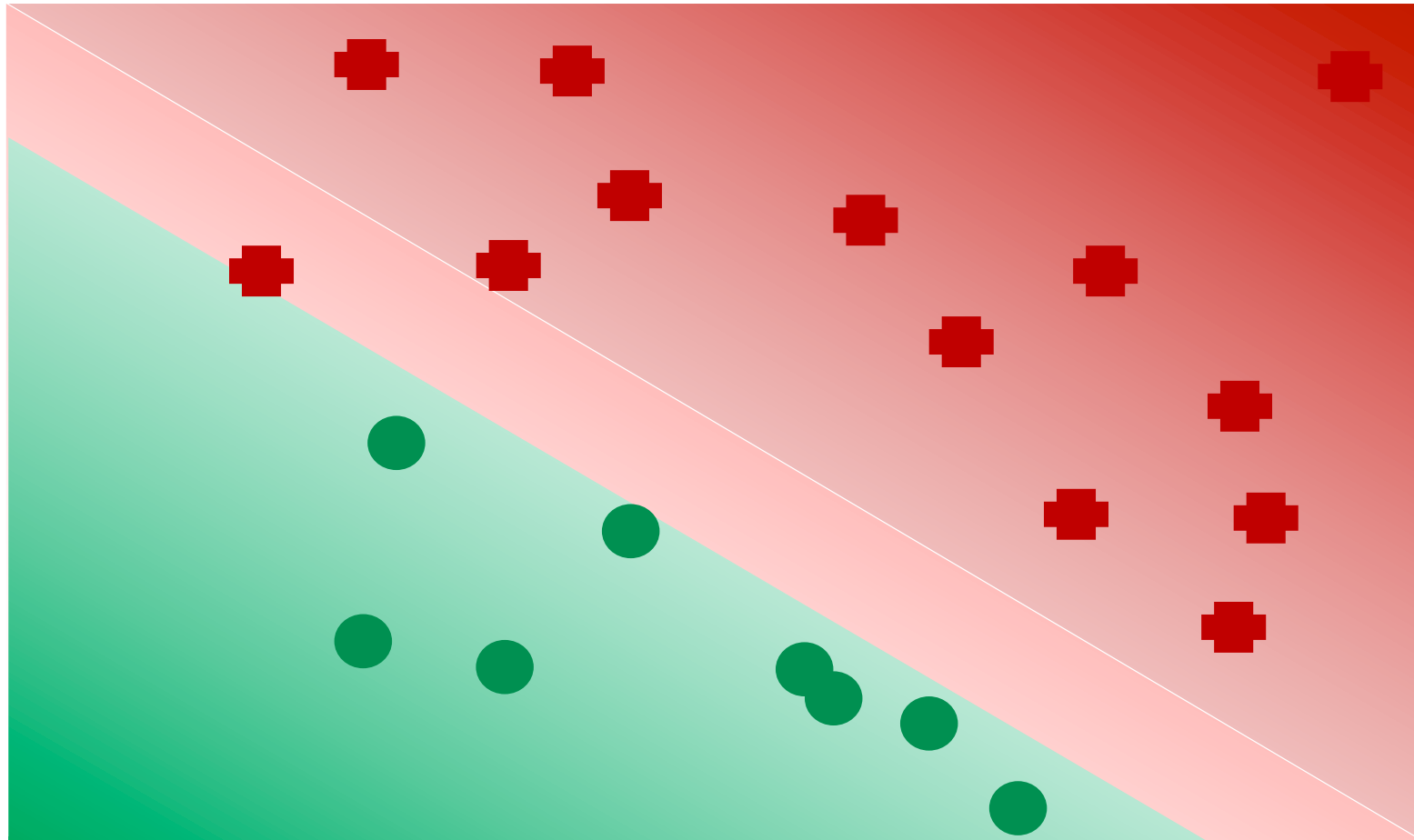
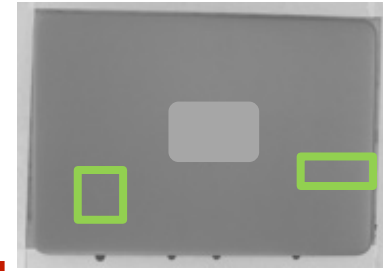
Class C

# 3. Laptop Surface AOI – Adjustable



Class A

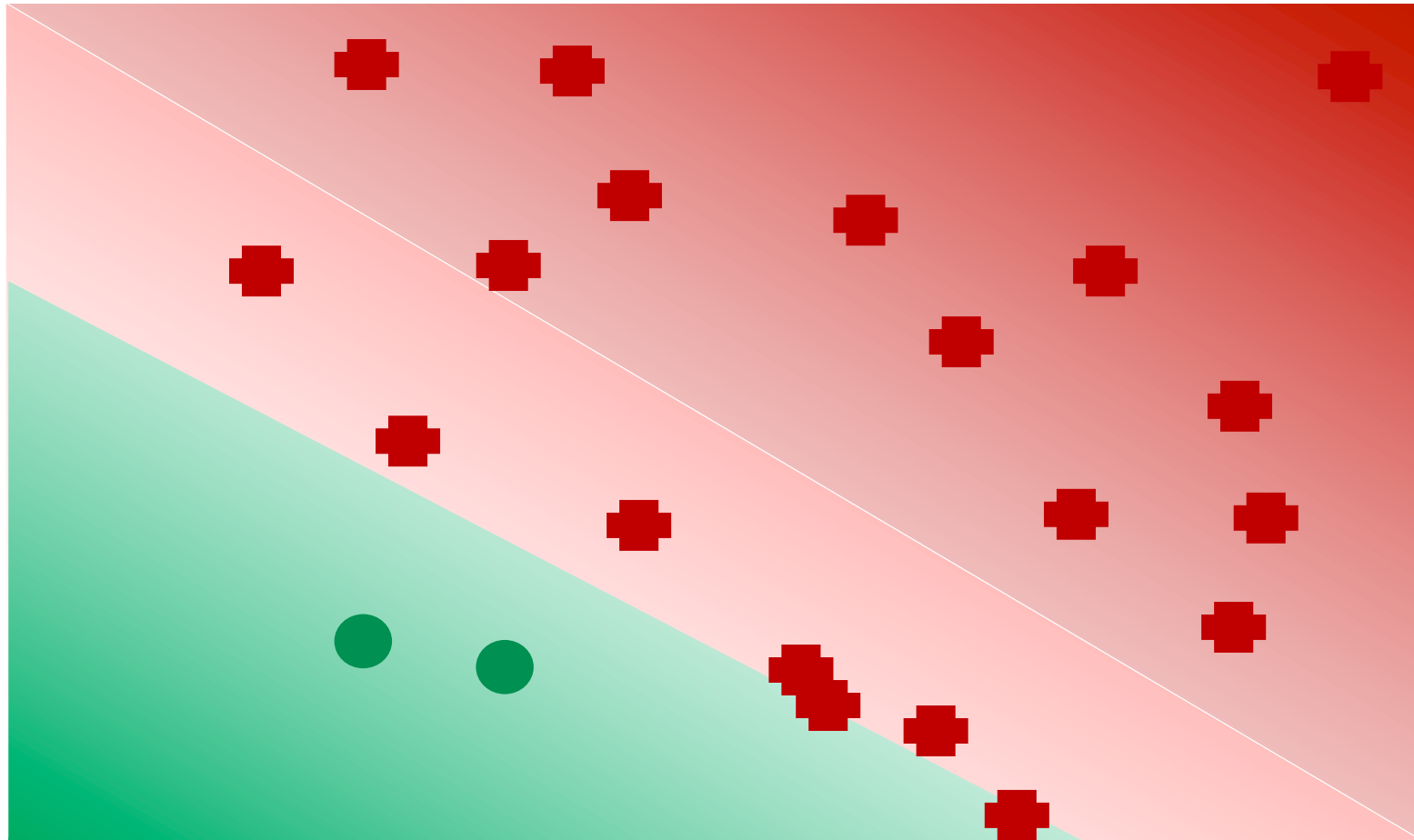
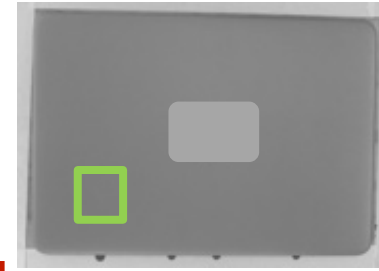
# 3. Laptop Surface AOI – Adjustable



Class A+

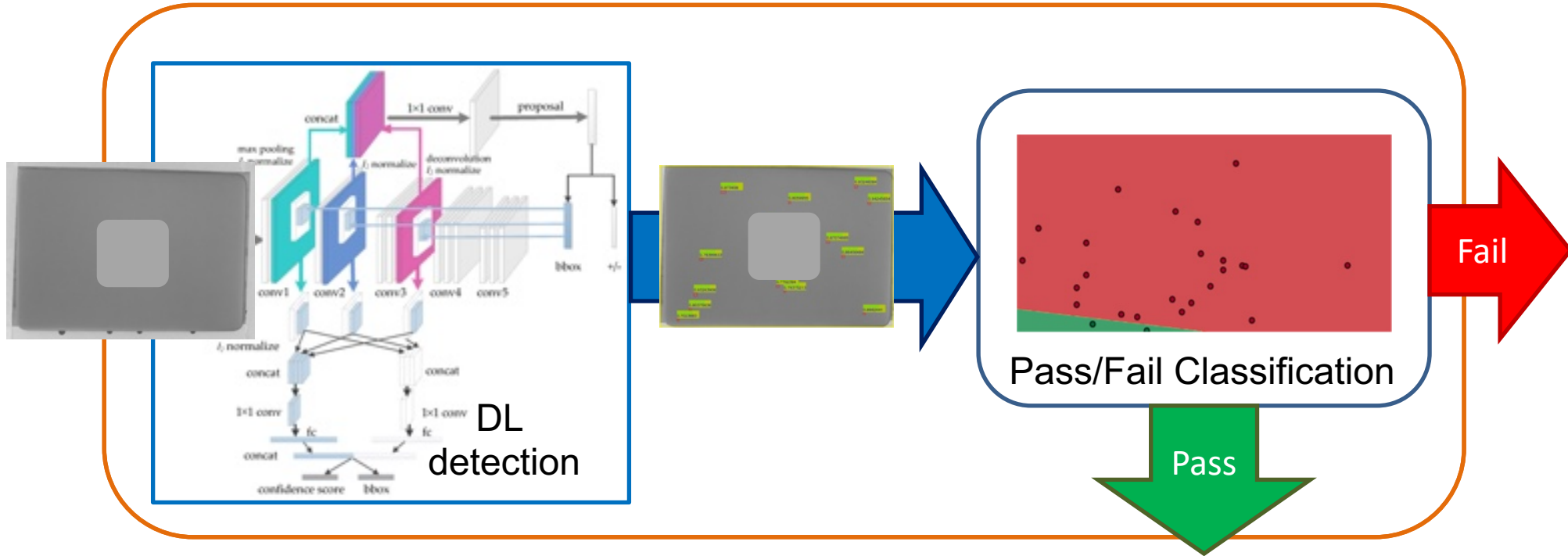


# 3. Laptop Surface AOI – Adjustable



Class A++

# 3. Laptop Surface AOI



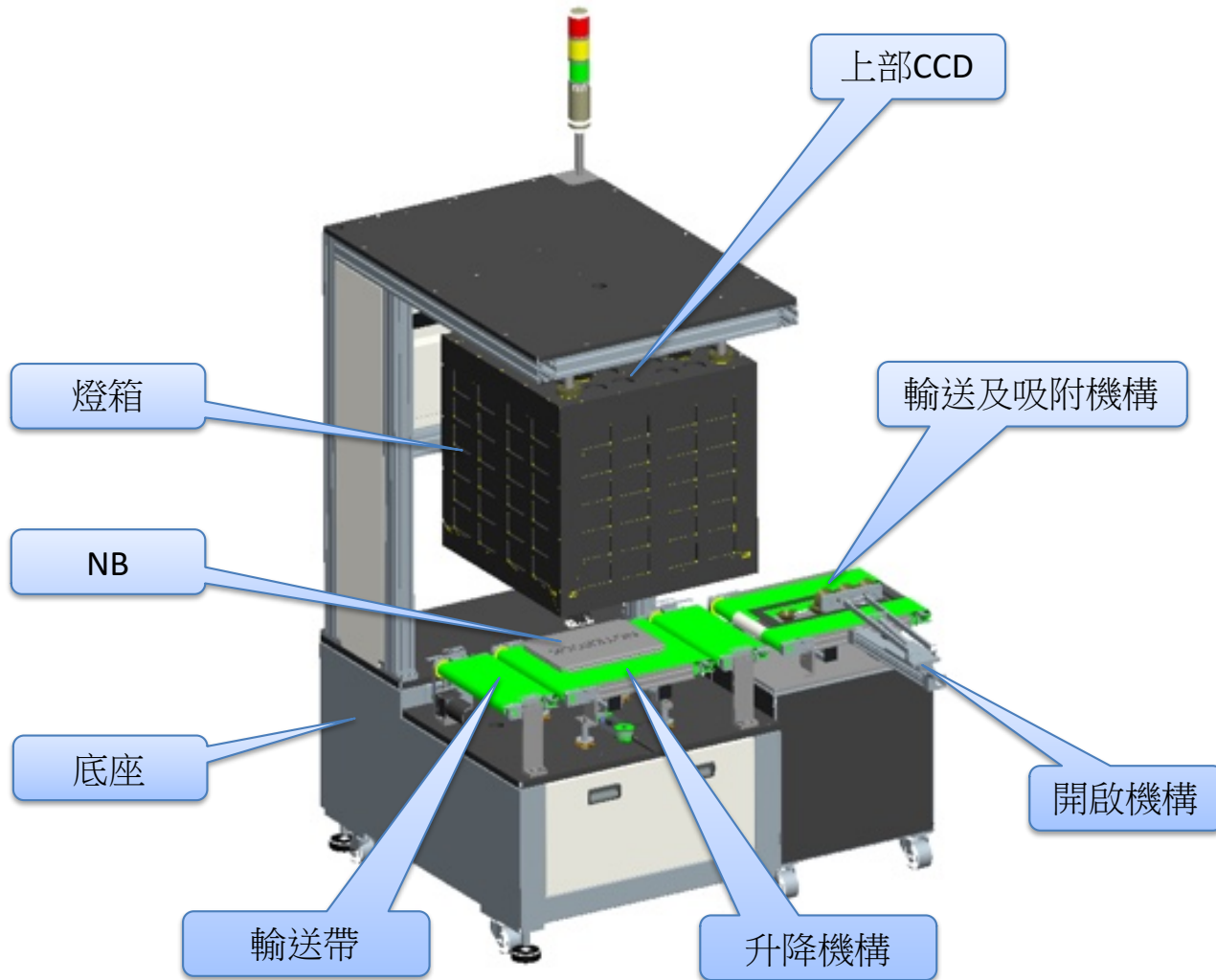
*Stage 1:*

**Explainable**

*Stage 2:*

**Adjustable**

# 3. Laptop Surface AOI – Factory Prototype

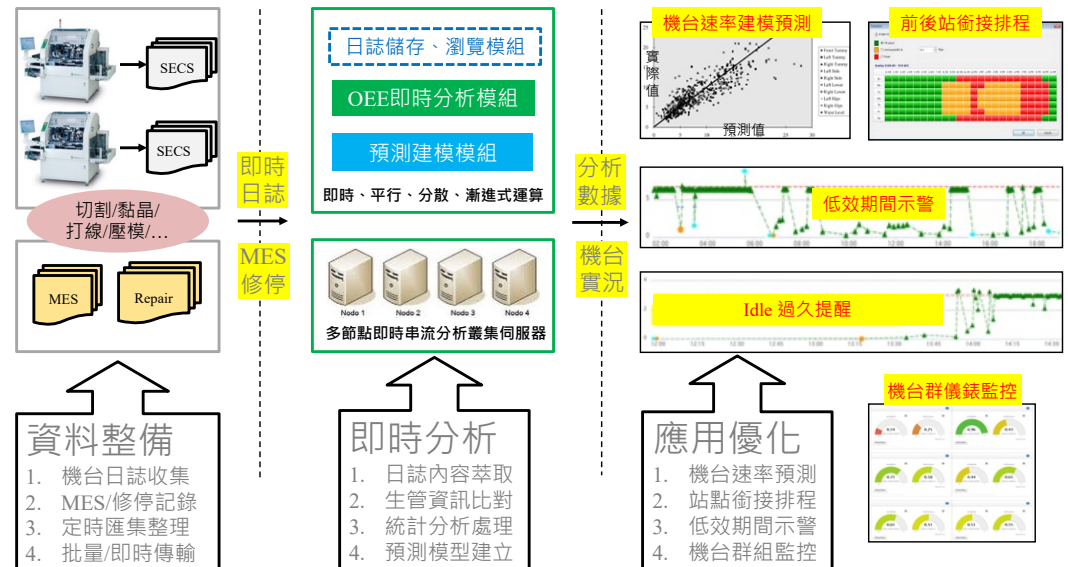


# Benefits of AI for Manufacturing

- The Obvious
  - Accuracy
  - Labor Saving ROI



- The Big Scope
  - Consistency
  - Trustable digital record
  - Industry 4.0



Source: Taiwan's Institute for Information Industry (III) 2017

# Benefits of AI for Manufacturing – I4.0

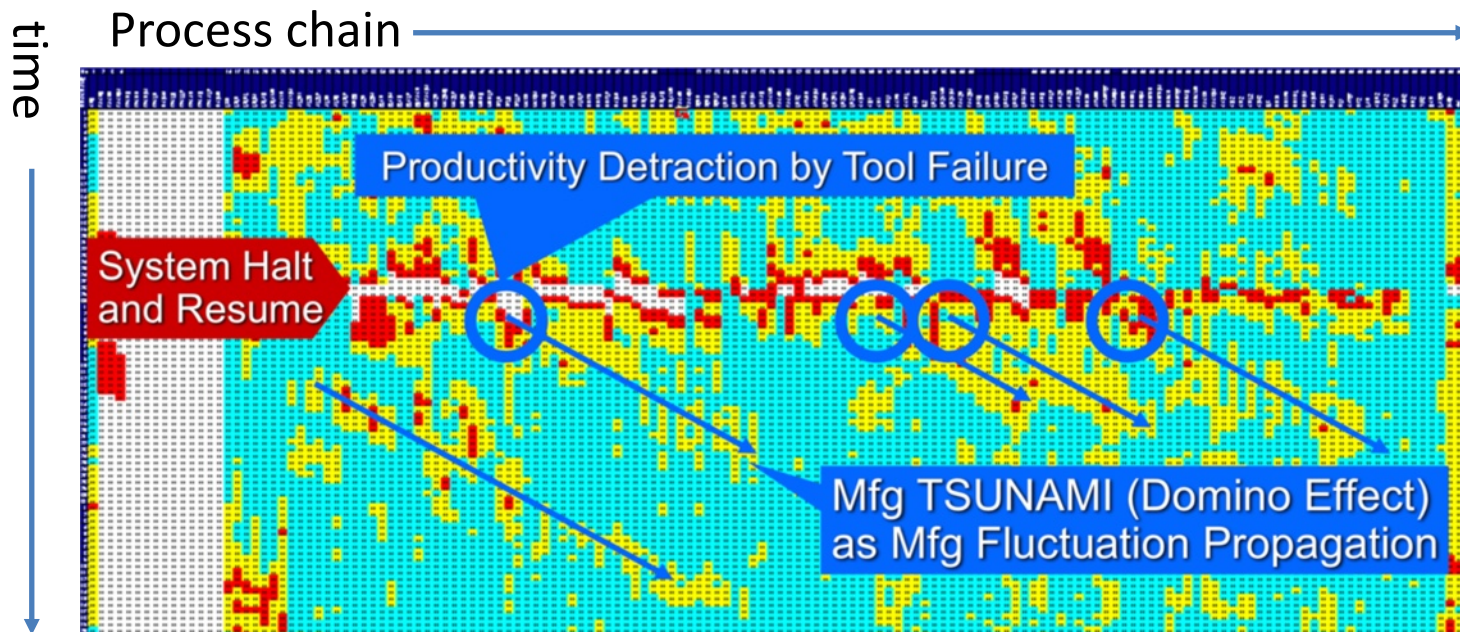
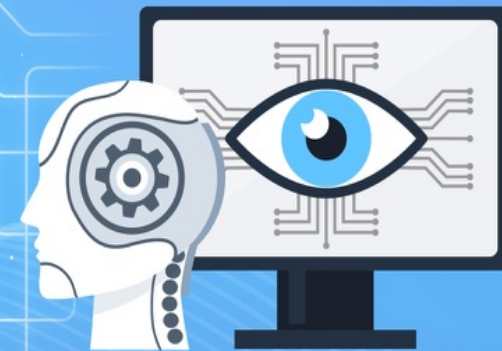


Image source: Hitachi "Factories of the Future", NEXT 2019

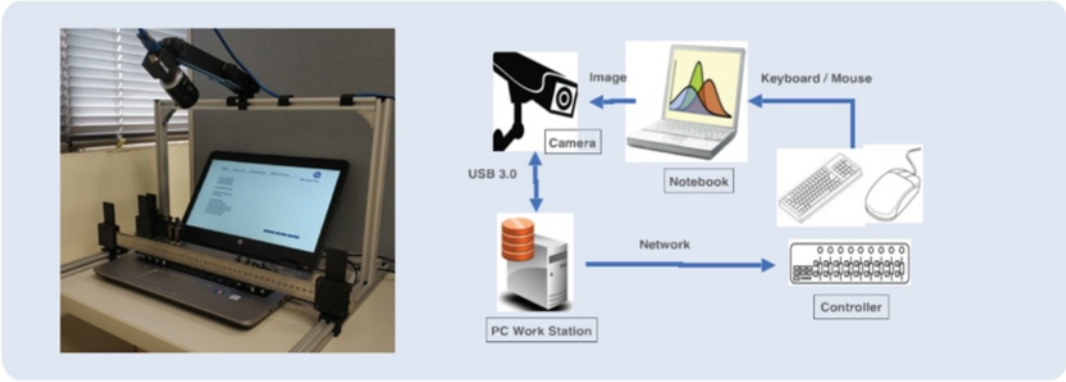


# Unexpected Bonus: to do well while building your AI engine

*We're on a mission to connect **60,000 residential disabled** in Taiwan to join AI work by providing high-quality data fuels to your AI engines.*



# Laptop Testing Robot

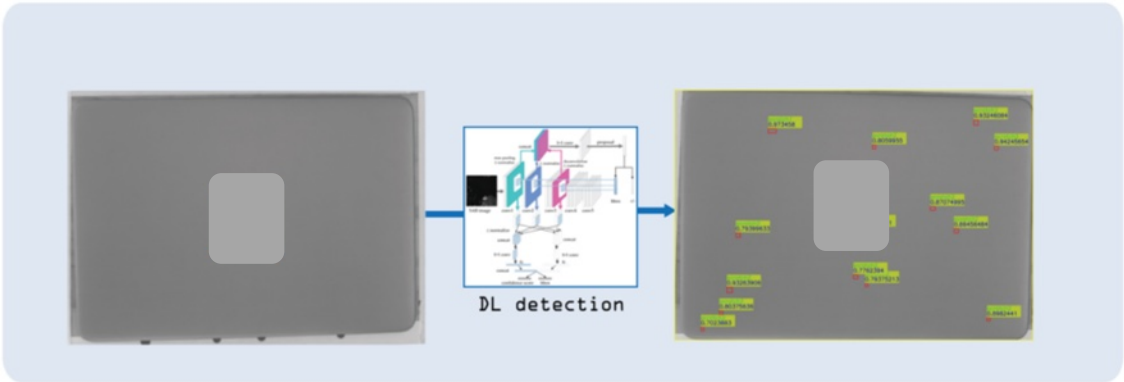
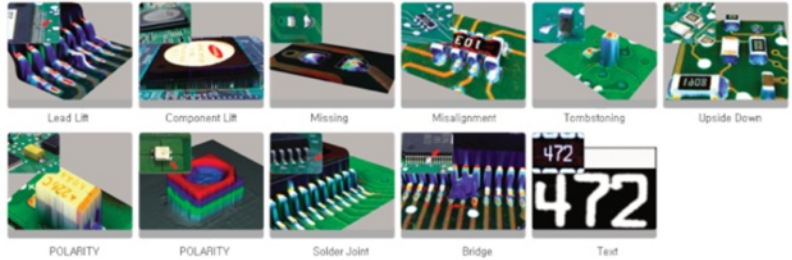


## AOI Re-inspection

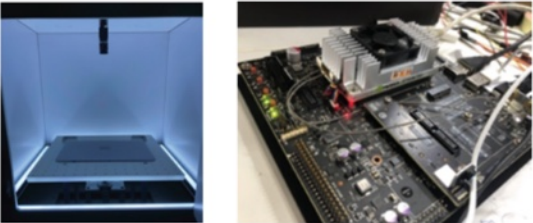
AOI Machine

# AOI Re-inspection

for SMT lines and PCBs



# Laptop Surface AOI







# Smart Manufacturing

GTC 2019

**Inventec**

# Edge AI in Smart Manufacturing: Defect Detection and Beyond

Trista Chen, Chief Scientist of Machine Learning of Inventec

Wei-Chao Chen, Co-founder of Skywatch & Head of Inventec AI Center

{chen.trista, chen.wei-chao} @ inventec.com

創新

Innovation

品質

Quality

虛心

Open Mind

力行

Execution