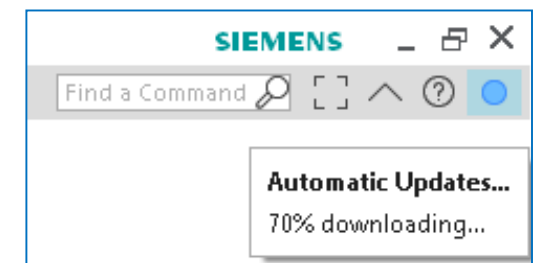
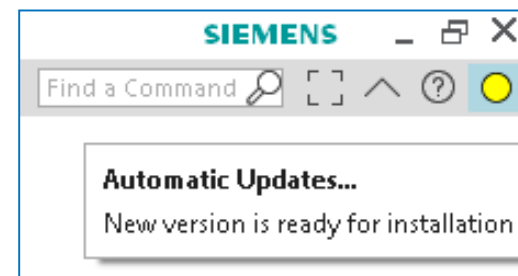
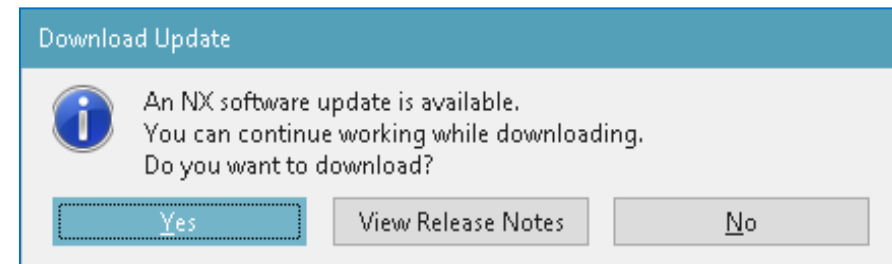
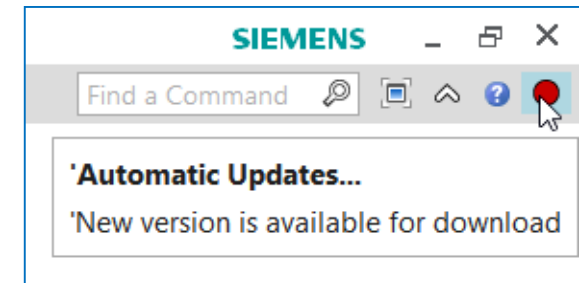
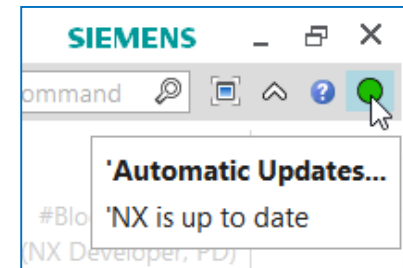
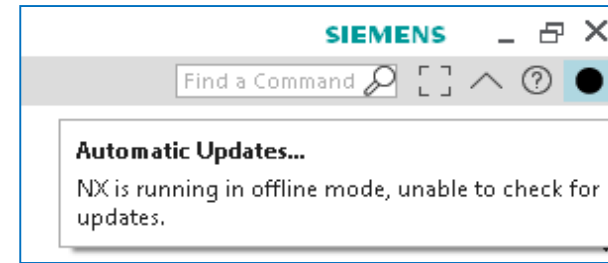
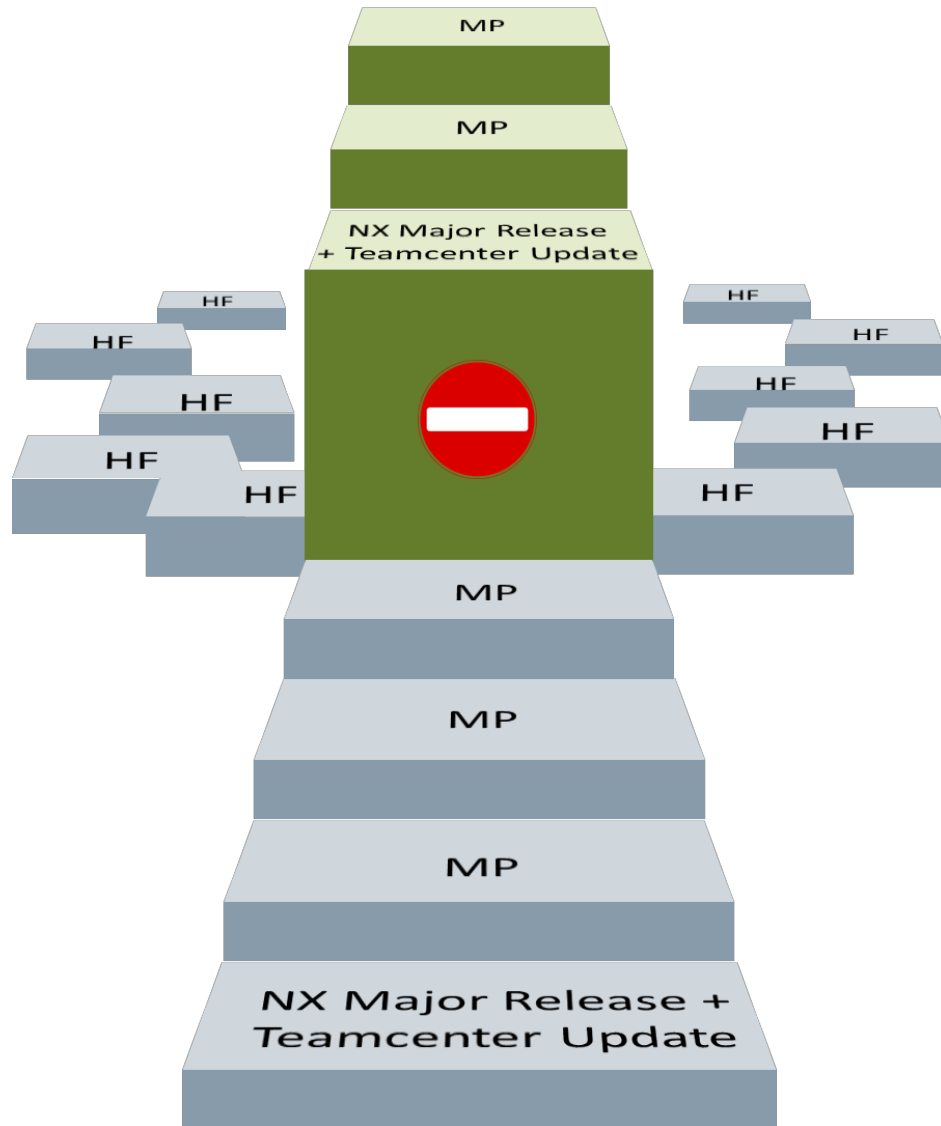


# NX Continuous Release

Presented by David Chiu



# Historical deployment steps



Perceived high cost of deployment makes some customers reluctant to take the next step resulting in end users using older software

Potential deployment barriers include:

- Need for pre-deployment activities
- Perception based on history
- Teamcenter Upgrade requirements
- Packaging and installation logistics
- Training costs
- Maintaining compatibility with partners and suppliers

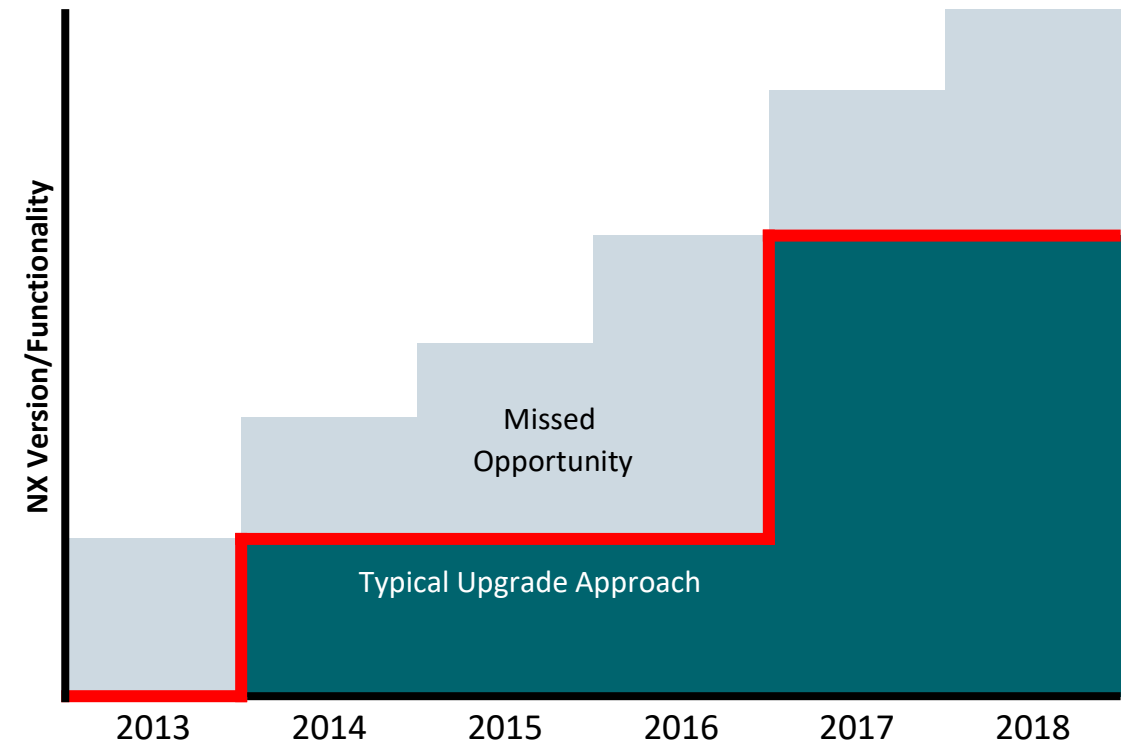
# The impact of delayed deployment

On average companies take 3 years to deploy new NX releases which means...

1. You risk being incompatible with suppliers and customers
2. Your team feels that is behind the rest of the industry
3. You risk falling behind your **competitors**

And most importantly

4. You are not benefitting from 1000's customer driven enhancements and PR fixes



# January 2019

# NX Continuous Release

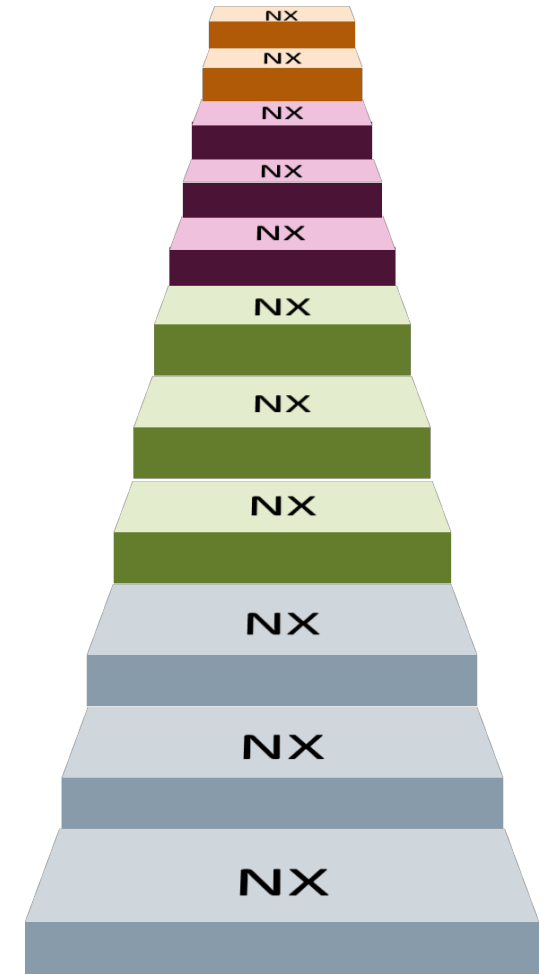


# Deployment steps going forward

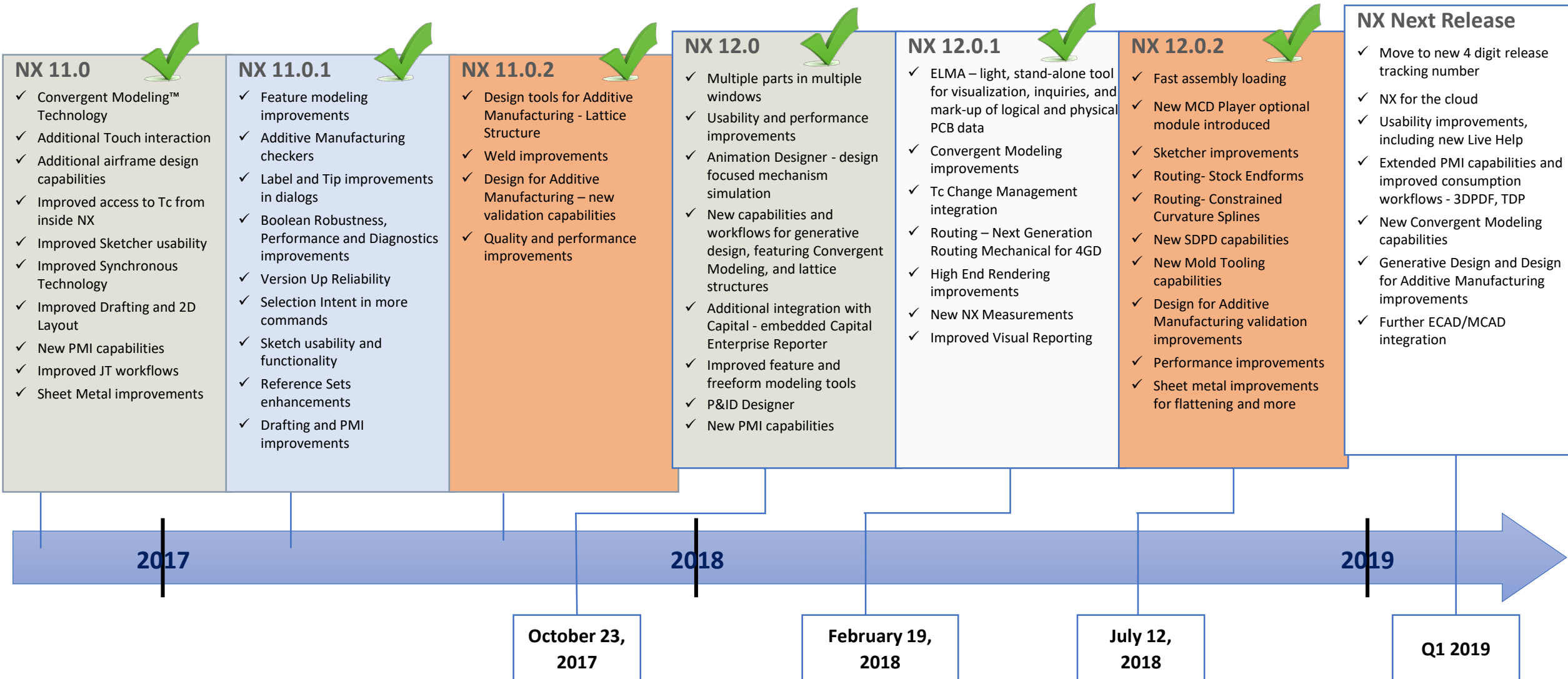


## Continuous Release:

- Regular **easy steps**
- Same **low effort** for an enhancement release as a maintenance release
- **No distinction** between types of releases
- **No Teamcenter upgrade** necessary for supported Teamcenter versions when upgrading NX
- Deploying productivity enhancements up to six times faster



# NX release roadmap



# NX release roadmap

## NX 12.0.2



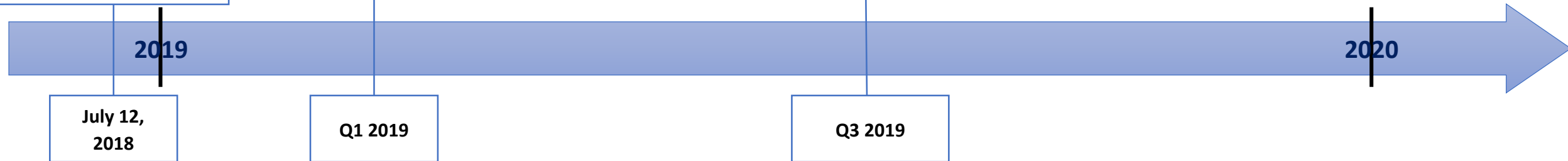
- ✓ Fast assembly loading
- ✓ New MCD Player optional module introduced
- ✓ Sketcher improvements
- ✓ Routing- Stock Endforms
- ✓ Routing- Constrained Curvature Splines
- ✓ New SDPD capabilities
- ✓ New Mold Tooling capabilities
- ✓ Design for Additive Manufacturing validation improvements
- ✓ Performance improvements
- ✓ Sheet metal improvements for flattening and more

## NX 1847

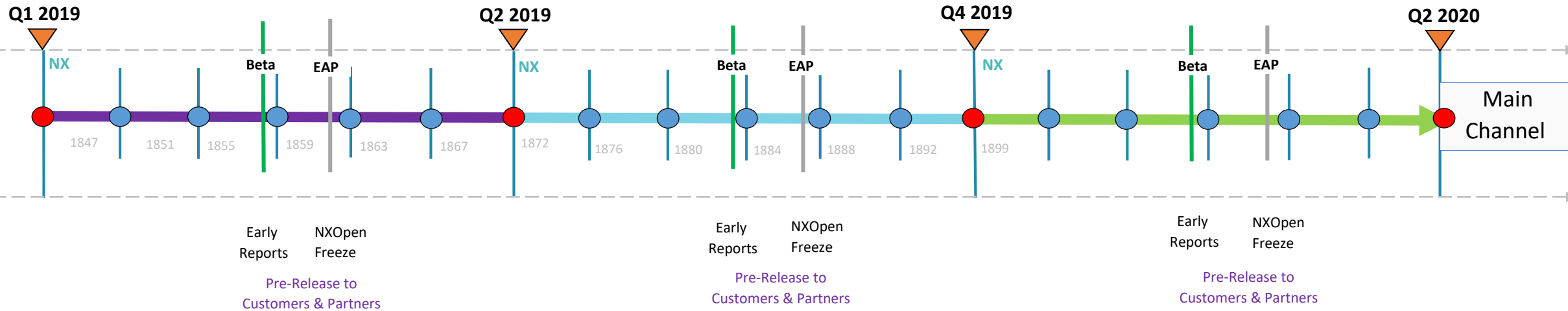
- ✓ NX Continuous Release Strategy
- ✓ Move to new 4 digit release tracking number
- ✓ Every NX release is customer deployment ready
- ✓ Enables improved PR responsiveness
- ✓ Enables faster ER delivery
- ✓ Enables response to global IT security threats
- ✓ De-emphasis release number
- ✓ Extended PMI capabilities and improved consumption workflows - 3DPDF, TDP
- ✓ Further ECAD/MCAD integration

## NX 1872

- ✓ Improved performance for JT loading
- ✓ Further ECAD/MCAD integration
- ✓ Enables on-line deployment alternatives



# Continuous release update model



- Only 1 active main channel to be supported in Continuous Releases
- Functional enhancement releases every ~6 months (New functionality, enhancements, fixes) ●
- Update releases every month (fixes) ●
- Beta and EAP events prior to every functional enhancement release
- Early reports, NXOpen API freeze and Pre-Release can be accessed around Beta and EAP time frame
- Removed focus from versioning, each new release is purely “NX”



# Upgrading – settings and configurations

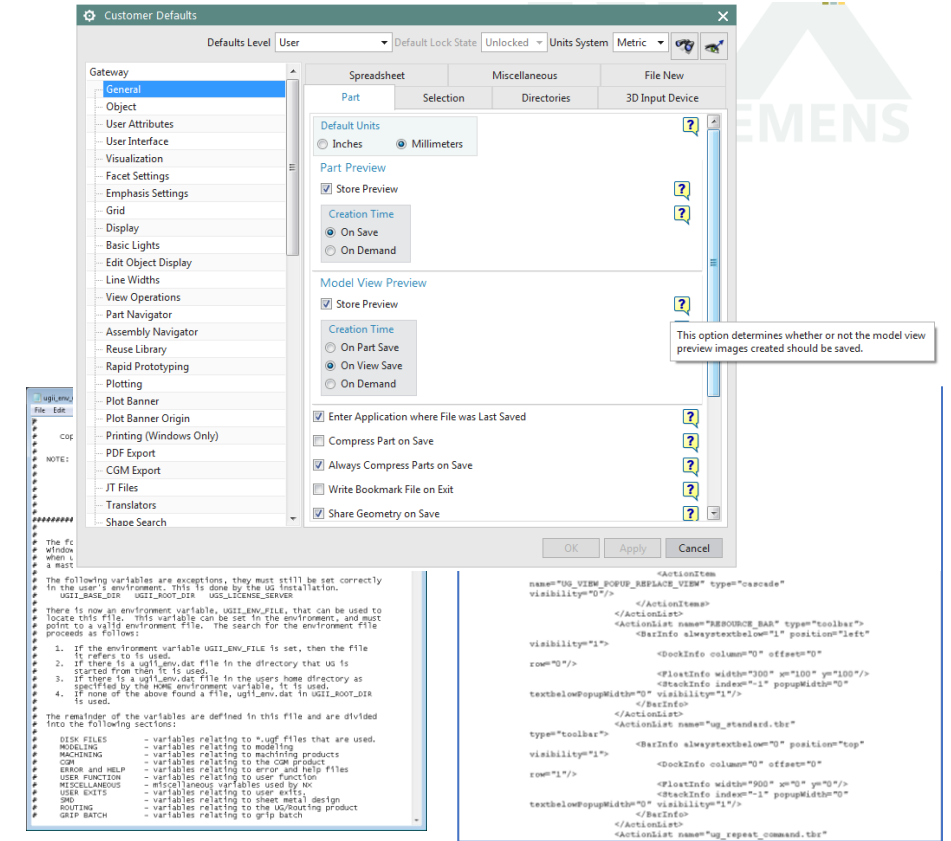
## What is Changing?

User Specific (Toolbar customization, Column order, etc.)

- Introduce file based registry
- Carry forward user specific configurations after successful NX update

Application Specific (Customer Defaults, Menu Buttons)

- Publishing what's changes configuration & customization specific reports in advance for every NX update
- Tools to carry forward group and site level configurations as part of the install process
- Ability to generate what's changed reports by comparing out-of-the-box NX configurations against customers NX configurations



Early Reports on What's Changed

Early Reports on What's Changed



Continuous Release

# Upgrading settings and configurations

## What's changed – customer defaults

> Home > Doc Center > NX > NX 1847 > What's Changed > Customer Defaults

**Disclaimer:** This is a preview version of What's Changed Report and the exact value may be different when this version is released.

### Customer Defaults What's Changed Reports

Comparing NX 1847 and:

[Compare](#)

| New Customer Defaults | Removed Customer Defaults | Modified Customer Defaults | New Drafting Standards | Removed Drafting Standards | Modified Drafting Standards |
|-----------------------|---------------------------|----------------------------|------------------------|----------------------------|-----------------------------|
|-----------------------|---------------------------|----------------------------|------------------------|----------------------------|-----------------------------|

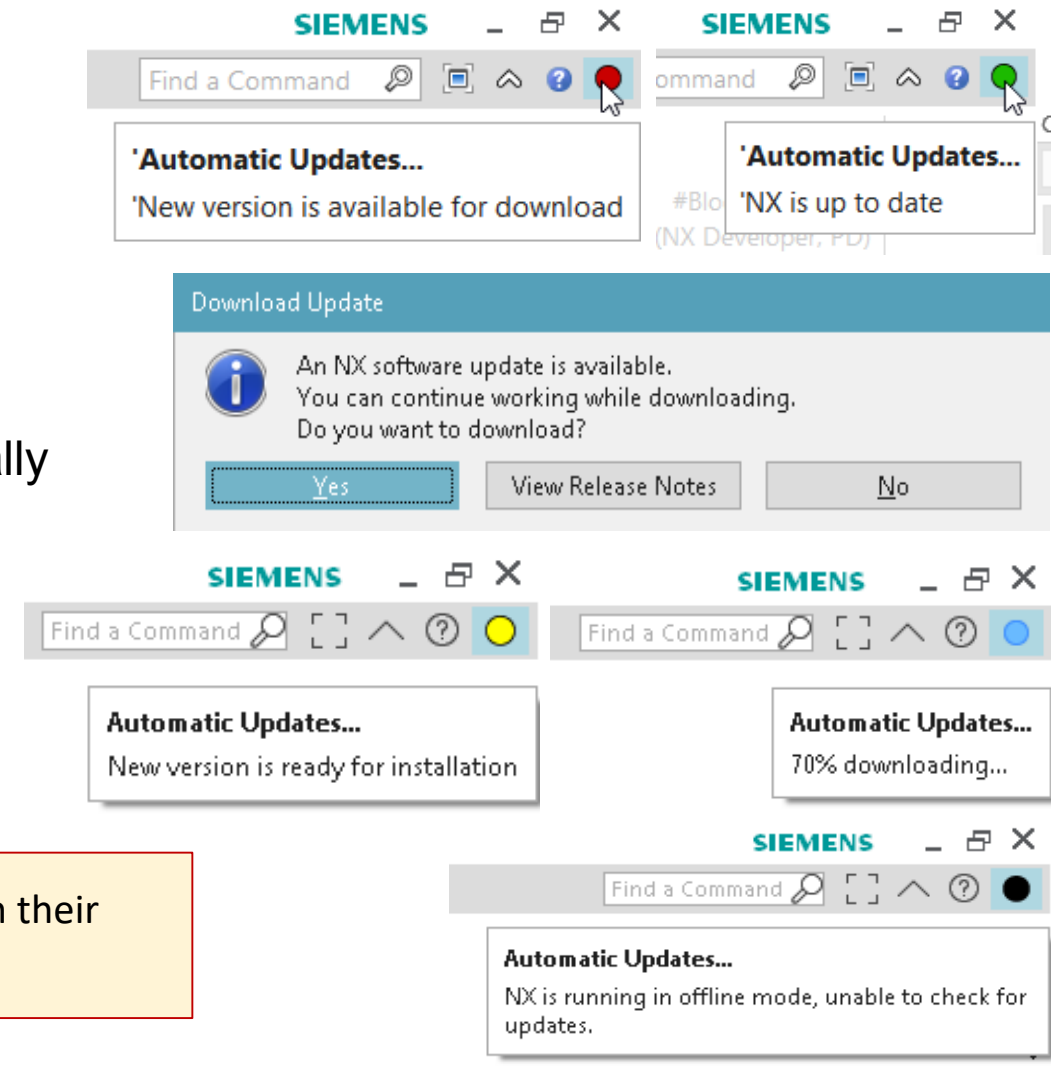
| S.No. | Application                          | Category             | Sub-Category         | Tab                  | Group                     | Preference Title                       | Preference Name                  | Preference Value               | Description  |
|-------|--------------------------------------|----------------------|----------------------|----------------------|---------------------------|--|----------------------------------|--------------------------------|--|
|       | <input type="text" value="Gateway"/> | <input type="text"/> | <input type="text"/> | <input type="text"/> | <input type="text"/>      | <input type="text"/>                   | <input type="text"/>             | <input type="text"/>           | <input type="text"/>   |
| 113   | Gateway                              | Reuse Library        | -                    | CADENAS Library      | Native NX                 | Library Directory                      | KRU_CADENAS_LIB_NATIVE           | \$LOCALAPPDATA\CADENAS Library | This field specifies the location of the CADENAS library and its cache data in native NX.  |
| 114   | Gateway                              | Parameter Library    | -                    | Locations            | Default Parameter Library | Enable                                 | UG_NxParameterLibraryEnable      | Yes                            | This option determines whether parameters in the Default Parameter Library will be shown in the list on parameter dialog boxes.                                  |
| 115   | Gateway                              | Parameter Library    | -                    | Locations            | -                         | Site and User Parameter Library Format | UG_ParameterLibrarySetUp         | Single Parameter Library File  | This option specifies if the Site and User Parameter Libraries are defined by a directory containing parameter library files or a single parameter library file. |
| 116   | Gateway                              | Part Navigator       | -                    | All                  | -                         | Feature Check Box Action               | UG_PartNav_FeatureCheckBoxAction | Hide                           | This option determines if the action performed by the feature node check box in the Part Navigator is suppress or hide.  |

# NX continuous release - installation and updates automatic update workflow overview

## Capabilities:

- Clients that are active and on main channel will receive automatic updates (MSI Full Install Only)
- Ability to enable/disable notification and automatic updates
- Visual indicator to notify user
- Authentication mechanism using web-key when user actually clicks on notification UI to download the available update
- Parallel processes that will run along with NX session to validate and inform user when NX update is posted and is available for download and install
- Option to receive notifications only but manual updates


**Note:** Automatic update is not mandatory, customers can still continue with their traditional process of manually downloading & installing NX using GTAC.

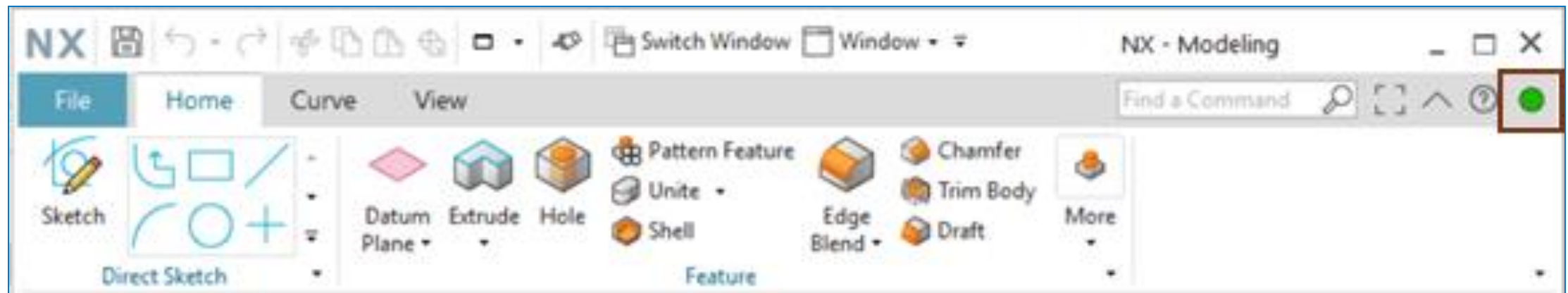


# NX 1847 continuous release (1/2)

All new features, enhancements, and quality improvements in NX are now delivered in a continuous fashion.







The following features are introduced to support the new process:

- The update notification icon  is available on the ribbon of the NX interface.
- The status of the NX installation and the availability of software updates.
- The color of the icon indicates the status of the NX installation and the availability of software updates.



# 1847 continuous release (2/2)

You can point the cursor to the notification icon to know more about actions required from the user.

| This color  | Indicates   |
|---|---|
| Green    | The NX software that is installed on the workstation is up to date.   |
| Red      | One of the following: <ul style="list-style-type: none"> <li>○ A software update is available and not yet downloaded on the workstation.</li> <li>○ An important software update will be available soon.</li> </ul>   |
| Blue     | An update is downloading.   |
| Yellow   | A software update is downloaded but not installed on the workstation.   |
| Grey     | One of the following: <ul style="list-style-type: none"> <li>○ The software update notifications are disabled. You can use the Software Update customer defaults to enable the notifications.</li> <li>○ The NX software is not installed using a .msi file.</li> <li>○ The NX software is not part of the main channel.</li> </ul> |
| Black  | The NX software cannot connect to the update server.  |

- You can download an update by clicking the notification icon. NX checks the user authentication before downloading the updates.
- By default, the automatic notifications and downloads are disabled. An NX administrator can use the customer defaults to change the default behavior for NX users.