

OAKWATER RANCH/ROCKING ARROW

37th Annual Charolais Bull Sale

April 14, 2020

1:00 p.m. CDT

Valentine Livestock

Valentine, NE





Oakwater Ranch

Greetings from Oakwater Ranch,

Welcome to our 37th Annual Charolais Bull Sale. The advantages of heterosis in a cattle operation is well documented. Research from Dr. David Lalman, Oklahoma State University shows that heterosis increases production 20-25% per cow. We encourage you to take advantage of heterosis by using an Oakwater bull and believe that you will be rewarded financially with added performance in your calf crop without any additional input.

We have included the Terminal Sire Index EPD generated by the Charolais Association. TSI is a combination evaluation number of individual bull differences. The TSI represents a dollar index per terminal progeny produced for a bull in the AICA database, ranking them for profit potential. This dollar index is to be interpreted much like a single trait EPD. For example, if Sire A's index is \$191.66 and Sire B's index is \$200.00, then we would expect Sire B's offspring to average \$8.34 more net return (\$200.00 minus \$191.66) than Sire A's offspring. We believe this EPD will be a beneficial tool in your selection process.

The past couple years have proven to be challenging times in the cattle industry. The industry has experienced record numbers of cattle, devastating challenges from Mother Nature, a soft cattle market coupled with increasing input costs. For those who have survived these challenges the future looks very promising. It appears the beef cow population is on the decline and the trend appears to be continuing. Mother Nature has provided us with a much friendlier winter to date and we hope that continues throughout the spring and summer. I just read an article in the February issue of Drovers titled Booming Trade Ahead. The points in the article address the new pacts with Japan and China, and that these agreements could be a game changer for beef over the next few years. I am encouraged by the outlook for the future and believe that there are signals for significant improvement.

We are looking forward to seeing you at the bull sale. Oakwater Ranch has focused on providing a consistent, uniform group of bulls that are realized by selecting for balanced traits.

As always, we welcome any questions that you may have. If we can be of any assistance in your selection process, please feel free to ask us. The bulls are at the ranch and you are always welcome to come take a look ahead of the sale. As in the past, the sale will be online at www.CattleUSA.com if you cannot attend. We will also have a couple of phones available for you to call in a bid if you wish, or you can leave a bid with any of us, as we always carry bids for customers who can't make it sale day.

On behalf of Oakwater Ranch
Dean Churchill

Oakwater Ranch | Rocking Arrow

Offers You...

- ✓ **67 Stout Yearling Bulls**
- ✓ **Uniformity**
- ✓ **Easy fleshing cattle**
- ✓ **Performance cattle with eye appeal**
- ✓ **Carcass and maternal traits**
- ✓ **Over 60 years of combined experience in the Charolais industry**
- ✓ **Dedicated customer service**
- ✓ **Performance and ultrasound data on bulls**
- ✓ **All bulls will pass a rigorous semen test**
- ✓ **These genetics produced some of the top commercial calves last fall**

Oakwater Ranch Bulls Average EPDs

BW	WW	YW	M	TM
-0.5	34	59	14	31
CWT	REA	FAT	MRB	TSI
17	0.63	0.006	0.17	208.38

AICA Non-Parent Animals Average EPDs

BW	WW	YW	M	TM
0.3	31	57	10	25
CWT	REA	FAT	MRB	TSI
20	0.69	0.008	0.10	203.29

THE OAKWATER ADVANTAGE

Oakwater Ranch/Rocking Arrow

37TH ANNUAL

BULL SALE

Tuesday ♦ 1:00 p.m. CST

APRIL 14, 2020

Valentine Livestock Auction

VALENTINE, NEBRASKA

SALE DAY PHONE: 402/376-3611

TERMS & CONDITIONS

AUCTIONEER:

Jim Birdwell 580/695-2352

SPECIAL REPRESENTATIVES:

Scott Dirk, *Tri State Livestock News*..... 605/380-6024

Chris Buetler, *Midwest Messenger*..... 402/380-8244

Jason Hanson..... 402/649-0500

Terms and Conditions: The terms of the sale are cash or check payable to Oakwater Ranch unless satisfactory credit arrangements have been made prior to the sale. The right of property shall not pass until settlement is made. All settlements must be made with the clerks of the sale before any cattle will be released.

Internet Broadcast: This sale will be broadcast live via the internet through Cattle USA. Go to www.cattleusa.com to learn how the internet auction works. We suggest you do this in advance.

Phone and Mail Bids: Bidders unable to attend may send or phone their bids to the ring men, auctioneer or Oakwater Ranch. If you are unable to attend the bull sale and would like us to purchase bulls for you, we will do so with 100% satisfaction guarantee. Buyers unable to attend the sale may also participate on line at www.cattleusa.com.

Registration Papers: All bulls, except as noted in this catalog are registered with the American International Charolais Association.

Delivery policy: Bulls whose destination is within 250 miles of Valentine, NE will be delivered at no cost. Bulls that need to be delivered to a point more than 250 miles from Valentine will be delivered at a prorated basis to a central point. We will do everything in our power to keep this cost to our customers as reasonable as possible and will guarantee this cost not to exceed \$250 per bull. If there are any questions or concerns with the delivery procedure, please feel free to contact us prior to the sale. **If you bring your trailer sale day and haul your own - we'll deduct \$50 per bull.**

Bull Care: The bulls started the gain test on Nov. 5, 2019. The performance test was a 118 day period with ADG and adjusted Yearling Weight determined at that time. Ultrasound data was collected on Feb. 18, 2020 for all bulls. This information is in the catalog. All bulls will pass a semen and fertility test and scrotal measurements will be available sale day.

Lunch: Lunch available at 11:30 a.m.

Motel Accommodations:

Econo Lodge (402)376-3131

(Ask for Oakwater Ranch room rate)

Breeding Guarantee: All bulls sell backed by the Oakwater Ranch Guarantee. They are guaranteed throughout the first breeding season against injury or death. If a replacement bull is not available, credit will be issued at the next annual sale. All claims for replacements need to be made by Sept. 1 of the current year. No guarantee is given that semen collected from these bulls will successfully freeze.

Bids: Each bull on which there are two or more bids will be sold to the highest bidder.

Disputes: In case of disputes, bidding will be reopened between the parties involved. If no further bid is made, the buyer will be the person from whom the auctioneer accepted the last bid. The auctioneer's decision in such matters is final.

Announcements: Errors discovered in the catalog will be corrected by announcements from the auction stand at sale time, and such corrections will take precedence over the printed matter in the catalog.

Accidents & Liabilities: All persons attend the sale at their own risk, and the seller and sales management assume no liability, legal or otherwise, for any accidents occurring in, on or around the premises.

Health: All bulls have passed a breeding soundness exam and semen test conducted by Cherry County Vet Clinic of Valentine, NE. A veterinarian will be available sale day to provide health papers as needed.

Handling: Each bull will be at the purchaser's risk as soon as sold, but every precaution will be taken by the seller to give all animals the best of care until delivery.

Oakwater Ranch



HEADQUARTERS:
3362 Hunt Rd.
Mansfield, MO 65704
David Pattridge - Owner

Dean Churchill
Director of
Commercial Marketing
402/376-6386
deanchurch1@gmail.com

Butch Alsup
Production Manager
417/926-8416

Reference
Sire



A FF ABOUTTIME Y07

Calved 6/18/11 Polled

M804390

SCHURRTOP HCR RANCHER
COOLEY ROYCE 1107 T39
MS COOLEY S DUKE 1107 N60
SRC KENTAKE S02 ET
DC GRONA 146T
SRC CLASSIC 019 R

{ SCHURRTOP EASE 8953 PLD
SCHURRTOP ML 6056 1184 P
WCR SIR DUKE 17J ET P
MS CCR TRADIT 1107 K6 P ET
M6 GRID MAKER 104 P ET
LC MS EXPEDITER 9419 ET
LT SILVER VALUE 2122P
DMD MS CLASSIC H05P

EPDs	BW	WW	YRL	Milk	TM	SCTL	TSI
	4.1 (.82)	44 (.69)	89 (.62)	11 (.32)	33	0.7 (.52)	242.44
CARCASS	CWT	REA	FAT	MARB	BW	WW	YW
	35 (.31)	.94 (.30)	.007 (.27)	.53 (.25)	78	NA	NA

- ▶ FF About Time Y07 is an out cross Herd Sire for our breeding program.
- ▶ A very complete, long sided, deep ribbed bull that is very correct and structurally sound.
- ▶ About Times EPDs rank him in the top 1% for Marbling, top 2% for TSI, top 4% for CW, top 5% for YW, top 8% for REA and top 15% for WW.
- ▶ There are six sons in the sale.

1

OW ABOUTTIME 9129 PLD

POLLED

Calved 2/19/19 Tattoo 9129 M923448

Act. BW	83
Adj. 205	687
Ratio	113
Adj. 365	1119
Ratio	104
ADG	3.31

FF ABOUT TIME Y07

OW DESIGN S519
OW MISS DESIGN S519-W153 PLD
OW MS SANDCREEK 5080

BW	WW	YW	MILK	MATL	CW	REA	FAT	MARB	TSI
0.7	40	72	14	34	25	0.70	-0.004	0.39	222.70
Ultrasound Data			Adj. REA	Ratio	Adj. %IMF	Ratio	Ratio	Rib Fat	
			12.91	100	3.24	134	0.17		

- ▶ Ranks in the top 1% for Marbling, and has a 134 ratio for %IMF, top 9% for TSI and top 20% for WW.

2

OW ABOUTTIME 9130 PLD

POLLED

Calved 2/19/19 Tattoo 9130 M923449

Act. BW	88
Adj. 205	641
Ratio	106
Adj. 365	1115
Ratio	103
ADG	4.00

FF ABOUT TIME Y07

OW IMPRESSIVE U502 PLD ET
OW MISS IMPRESSIVE 2099 PLD
OW MISS MAXIMIZER U 233 PLD

BW	WW	YW	MILK	MATL	CW	REA	FAT	MARB	TSI
2.8	39	73	11	30	21	0.60	0.015	0.41	221.89
Ultrasound Data			Adj. REA	Ratio	Adj. %IMF	Ratio	Ratio	Rib Fat	
			12.31	96	3.15	131	0.26		

- ▶ Another high marbling, About Time son that ratioed 131 for %IMF and top 10% for TSI.



OW Abouttime 9500...Lot 3

Oakwater Ranch

3

OW ABOUTTIME 9500 P/S

SCURRED

Calved 2/15/19 Tattoo 9500 EM923780

Act. BW	88
Adj. 205	705
Ratio	ET
Adj. 365	1279
Ratio	ET
ADG	4.79

FF ABOUT TIME Y07

OW DESIGN S519
OW MISS DESIGN S519-W87 PLD
OW MISS SHOWCUP S501 PLD ET

BW	WW	YW	MILK	MATL	CW	REA	FAT	MARB	TSI
3.1	38	72	14	33	33	0.86	0.000	0.34	221.55
Ultrasound Data			Adj. REA	Ratio	Adj. %IMF	Ratio	Ratio	Rib Fat	
			13.76	ET	2.39	ET	0.19		

- ▶ Lots 3 - 6 represent an opportunity to purchase four ET, About Time sons out of W87 - an exceptional Design S519 daughter.

4

OW ABOUTTIME 9501 PLD ET

POLLED

Calved 2/17/19 Tattoo 9501 EM923781

Act. BW	90
Adj. 205	ET
Ratio	656
Adj. 365	1150
Ratio	ET
ADG	4.41

FF ABOUT TIME Y07

OW DESIGN S519
OW MISS DESIGN S519-W87 PLD
OW MISS SHOWCUP S501 PLD ET

BW	WW	YW	MILK	MATL	CW	REA	FAT	MARB	TSI
3.1	38	72	14	33	33	0.86	0.000	0.34	221.55
Ultrasound Data			Adj. REA	Ratio	Adj. %IMF	Ratio	Ratio	Rib Fat	
			13.59	ET	2.22	ET	0.19		

- ▶ Here is a great opportunity to purchase full brothers that will produce a great set of calves.



OW Miss Design S519-W87 Pld...dam of Lots 3 - 6

The Oakwater Advantage



OW Abouttime 9502 Pld ET...Lot 5



OW ABOUTTIME 9502 PLD ET **POLLED**

Calved 2/11/19	Tattoo 9502	EM923782	Act. BW	89
			Adj. 205	656
			Ratio	ET
			Adj. 365	1165
			Ratio	ET
			ADG	4.25

FF ABOUT TIME Y07

OW DESIGN S519
OW MISS DESIGN S519-W87 PLD
OW MISS SHOWCUP S501 PLD ET

BW	WW	YW	MILK	MATL	CW	REA	FAT	MARB	TSI
3.1	39	73	14	33	31	0.90	-0.004	0.39	224.02
Ultrasound			Adj. REA	Ratio	Adj. %IMF	Ratio	Ratio	Ratio	Rib Fat
Data			13.60	ET	3.15	ET	ET	0.15	

▶ These bulls provide performance and carcass traits.



OW Shinetime 9131 Pld...Lot 7



OW SHINETIME 9131 PLD **POLLED**

Calved 2/19/19	Tattoo 9131	M923450	Act. BW	91
			Adj. 205	681
			Ratio	112
			Adj. 365	1171
			Ratio	109
			ADG	4.23

OW SHINE TIME 6187 PLD

OW DIVIDEND X97 PLD
OW MISS DIVIDEND 3016 PLD
OW MS PRIME CUT 5102 PLD

BW	WW	YW	MILK	MATL	CW	REA	FAT	MARB	TSI
0.5	27	57	20	33	22	0.68	0.003	0.14	205.50
Ultrasound			Adj. REA	Ratio	Adj. %IMF	Ratio	Ratio	Ratio	Rib Fat
Data			13.51	105	2.29	95	0.15		

▶ A very complete individual the has good performance stats and ratioed 105 for REA.



OW ABOUTTIME 9503 PLD ET **POLLED**

Calved 2/5/19	Tattoo 9503	EM923783	Act. BW	88
			Adj. 205	641
			Ratio	ET
			Adj. 365	1150
			Ratio	ET
			ADG	4.44

FF ABOUT TIME Y07

OW DESIGN S519
OW MISS DESIGN S519-W87 PLD
OW MISS SHOWCUP S501 PLD ET

BW	WW	YW	MILK	MATL	CW	REA	FAT	MARB	TSI
3.1	37	71	14	33	35	0.83	0.004	0.30	219.09
Ultrasound			Adj. REA	Ratio	Adj. %IMF	Ratio	Ratio	Ratio	Rib Fat
Data			13.02	ET	2.40	ET	ET	0.25	



OW SHINETIME 9152 PLD **POLLED**

Calved 2/25/19	Tattoo 9152	M923503	Act. BW	73
			Adj. 205	676
			Ratio	111
			Adj. 365	1185
			Ratio	110
			ADG	4.21

OW SHINE TIME 6187 PLD

OW KEYSTONE 2057 PLD
OW MISS KEYSTONE 5078 PLD
OW MISS SANDCREEK 3513 PLD ET

BW	WW	YW	MILK	MATL	CW	REA	FAT	MARB	TSI
-2.0	33	63	10	27	17	0.64	0.004	0.34	216.75
Ultrasound			Adj. REA	Ratio	Adj. %IMF	Ratio	Ratio	Ratio	Rib Fat
Data			13.00	101	3.23	134	0.21		

▶ Definitely a bull that will grab your attention sale day. He ranks in the top 1% of the breed for Marbling, top 15% for BW and ratios well above average for performance and carcass traits.

Reference Sire

B OW SHINETIME 6187 PLD

Calved 2/18/16 Polled M875149

FF ABOUT TIME Y07

COOLEY ROYCE

DC GRONA 146T

WCR SIR PRIME CUT 3114 P

OW MISS PRIME CUT S 157

RAC MS PROGRESS 6050F PLD

- SCHURRTOP HCR RANCHER
- MS COOLEY S DUKE
- SRC KENTAKE 502 ET
- SRC CLASSIE 019R
- WCR PRIME CUT 764
- WCR MISS SKYLIT 6003 ET P
- DOUBLE-H PLD PROGRESS ET
- RAC LADY TOM 1107

EPDs	BW	WW	YRL	Milk	TM	SCTL	TSI
	0.9 (.66)	29 (.41)	61 (.38)	12 (.17)	27	0.8 (.34)	214.66

CARCASS	CWT	REA	FAT	MARB	BW	WW	YW
	23 (.19)	.85 (.19)	0.003 (.17)	.30 (.14)	87	657	1172

- ▶ Shine Time 6187 offers a balance of solid performance and carcass traits combined with calving ease
- ▶ His EPDs rank him in the top 5% for Marbling, top 20% for REA, top 25% for CW and top 35% for TSI.
- ▶ Three sons sell in the offering.



OW Shinetime 9152 Pld...Lot 8

Reference
Sire

C OW MYTIME 6075 PLD
Calved 1/25/16 Polled M874413

FF ABOUT TIME Y07
COOLEY ROYCE
DC GRONA 146T
DC-OW MAXIMIZER 385 PLD
OW MISS MAXIMIZER X21 PLD
OW MISS DESIGN U 086 PLD

SCHURRTOP HCR RANCHER
MS COOLEY S DUKE
SRC KENTAKE 502 ET
SRC CLASSIE 019R
FC MAGIC WIND 0105 P
DC MISS JOSEY 0215 PLD
OW DESIGN S519
RAC WHITNEY 8095 PLD

EPDs	BW	WW	YRL	Milk	TM	SCTL	TSI
	-1.9 (.68)	18 (.42)	45 (.39)	17 (.16)	26	0.1 (.35)	199.91

CARCASS	CWT	REA	FAT	MARB	BW	WW	YW
	18 (.20)	.45 (.20)	.027 (.17)	.31 (.12)	88	677	1157

- ▶ My Time is an About Time son out of a very productive Maximizer daughter.
- ▶ His EPDs rank him in the top 5% for Marbling and top 15% for BW.
- ▶ Seven sons sell as Lots 10 - 16.



OW Mytime 9141 Pld...Lot 11

9 OW SHINETIME 9254 **DEHORND**

Calved 3/23/19	Tattoo 9254	M923799	Act. BW	83
			Adj. 205	700
			Ratio	115
			Adj. 365	1159
			Ratio	107
			ADG	3.87

OW SHINE TIME 6187 PLD

OW DIVIDEND X97 PLD

OW MISS DIVIDEND 2232 PLD

OW MS SANDCREEK 5080

BW	WW	YW	MILK	MATL	CW	REA	FAT	MARB	TSI
0.3	36	67	15	33	19	0.64	0.005	0.23	215.22
			Adj. REA	Ratio	Adj. %IMF	Ratio	Rib Fat		
			12.16	95	2.70	112	0.17		

- ▶ He has a big spread from birth to weaning and ratioed 112 for Marling,

10 OW MYTIME 9135 PLD **POLLED**

Calved 2/19/19	Tattoo 9135	M923452	Act. BW	80
			Adj. 205	626
			Ratio	103
			Adj. 365	1096
			Ratio	102
			ADG	3.86

OW MY TIME 6075 PLD

OW NETWORK X120 PLD

OW MISS NETWORK 5123 PLD

OW MISS DESIGN S519-W115 PLD

BW	WW	YW	MILK	MATL	CW	REA	FAT	MARB	TSI
-0.3	32	62	13	29	16	0.34	0.012	0.23	210.40
			Adj. REA	Ratio	Adj. %IMF	Ratio	Rib Fat		
			10.81	84	2.80	116	0.19		

- ▶ An 80 pound birth weight to go along with solid performance EPDs.



This top bull from the 2018 sale is a maternal brother to Lot 9.

11 OW MYTIME 9141 PLD **POLLED**

Calved 2/21/19	Tattoo 9141	M923475	Act. BW	81
			Adj. 205	696
			Ratio	115
			Adj. 365	1234
			Ratio	114
			ADG	4.13

OW MY TIME 6075 PLD

MC-OW SANDCREEK 375

OW MISS SANDCREEK U 105

OW MISS ABSOLUTE S 070 PLD

BW	WW	YW	MILK	MATL	CW	REA	FAT	MARB	TSI
-1.3	35	70	13	30	22	0.98	0.009	0.23	222.90
			Adj. REA	Ratio	Adj. %IMF	Ratio	Rib Fat		
			15.64	122	2.55	106	0.15		

- ▶ Lots of performance in this long sided bull that has a great group of performance and carcass statistics. He ranks in the top 4% for REA, top 6% for Marbling and top 9% for TSI.

12 OW MYTIME 9164 PLD **POLLED**

Calved 2/27/19	Tattoo 9164	M923506	Act. BW	69
			Adj. 205	633
			Ratio	104
			Adj. 365	1076
			Ratio	100
			ADG	3.93

OW MY TIME 6075 PLD

WCR SIR PRIME CUT 3114 P

OW MISS PRIME CUT W21 PLD

OW MISS FLASH T148 PLD

BW	WW	YW	MILK	MATL	CW	REA	FAT	MARB	TSI
-3.3	19	37	11	21	10	0.57	0.029	0.11	187.68
			Adj. REA	Ratio	Adj. %IMF	Ratio	Rib Fat		
			13.03	101	2.13	88	0.28		

- ▶ A birth weight of 69 pounds with a BW EPD that ranks in the top 5% of the breed.

13 OW MYTIME 9175 PLD **POLLED**

Calved 2/28/19	Tattoo 9175	M923688	Act. BW	70
			Adj. 205	664
			Ratio	109
			Adj. 365	1133
			Ratio	105
			ADG	4.16

OW MY TIME 6075 PLD

OW DIVIDEND X97 PLD

OW MISS DIVIDEND 5225 PLD

OW MISS SANDMAN 2086 PLD

BW	WW	YW	MILK	MATL	CW	REA	FAT	MARB	TSI
-3.3	26	53	18	31	16	0.56	0.025	0.18	204.41
			Adj. REA	Ratio	Adj. %IMF	Ratio	Rib Fat		
			12.64	98	2.39	99	0.25		

- ▶ A Birth Weight EPD that ranks in the top 5% and Marbling EPD in the top 15%.



This top bull from the 2017 sale is a maternal brother to Lot 17

14 OW MYTIME 9226 PLD **POLLED**
 Calved 3/11/19 Tattoo 9226 M923775

Act. BW	77
Adj. 205	612
Ratio	101
Adj. 365	1062
Ratio	98
ADG	4.13

OW ABOUT TIMEX 7050 PLD
 OW FLASH T198 PLD
 OW MISS FLASH 3175 PLD
 OW MISS PAUL U 063

BW	WW	YW	MILK	MATL	CW	REA	FAT	MARB	TSI
-1.1	21	41	17	27	11	0.35	0.025	0.20	190.37
			Adj. REA	Ratio	Adj. %IMF	Ratio	Rib Fat		
			12.19	95	2.64	110	0.27		

▶ A low birth weight and a Marbling ratio of 110.

15 OW MYTIME 9242 PLD **POLLED**
 Calved 3/19/19 Tattoo 9242 M923793

Act. BW	82
Adj. 205	655
Ratio	108
Adj. 365	1029
Ratio	95
ADG	3.53

OW MY TIME 6075 PLD
 DC-OW SANDCREEK 375
 OW MISS SANDCREEK 4005 PLD
 OW MISS DESIGN U518 PLD ET

BW	WW	YW	MILK	MATL	CW	REA	FAT	MARB	TSI
-3.2	20	36	14	23	5	0.53	0.009	0.16	188.60
			Adj. REA	Ratio	Adj. %IMF	Ratio	Rib Fat		
			13.11	102	1.99	83	0.17		

▶ A negative 3.2 BW EPD and a ribeye ratio of 102.

16 OW MYTIME 9262 PLD **POLLED**
 Calved 3/27/19 Tattoo 9262 M923803

Act. BW	79
Adj. 205	634
Ratio	104
Adj. 365	1084
Ratio	101
ADG	3.93

OW MY TIME 6075 PLD
 OW IMPRESSIVE U502 PLD ET
 OW MISS IMPRESSIVE 4011 PLD
 OW MISS BULLSEYE U247 PLD

BW	WW	YW	MILK	MATL	CW	REA	FAT	MARB	TSI
-0.3	29	55	10	25	13	0.37	0.022	0.26	202.84
			Adj. REA	Ratio	Adj. %IMF	Ratio	Rib Fat		
			11.82	92	2.41	100	0.19		

▶ Solid performance with a 79 pound birth weight.



OW Timex 9144 P/S...Lot 17

17 OW TIMEX 9144 P/S **SCURRED**
 Calved 2/21/19 Tattoo 9144 M923476

Act. BW	89
Adj. 205	752
Ratio	124
Adj. 365	1384
Ratio	128
ADG	4.44

OW ABOUT TIMEX 7050 PLD
 OW DESIGN S519
 OW MISS DESIGN S519-Y89 PLD
 RLL MS PERFECT MAC B205

BW	WW	YW	MILK	MATL	CW	REA	FAT	MARB	TSI
2.4	51	95	17	42	42	0.83	-0.001	0.21	238.48
			Adj. REA	Ratio	Adj. %IMF	Ratio	Rib Fat		
			13.84	108	2.30	95	0.13		

▶ Long sided individual with impressive EPDs. He ranks in the top 1% for CW, YW and TSI and top 2% for WW. He has an adjusted 205 day weight of 752 pounds.

Reference Sire

D OW ABOUTTIMEX 7050 PLD
 Calved 1/23/17 Polled **M890327**

FF ABOUT TIME Y07
 COOLEY ROYCE
 DC GRONA 146T
 MC-OW SANDCREEK 375
 OW MISS SANDCREEK U 105
 OW MISS ABSOLUTE S 070 PLD

{ SCHURRTOP HCR RANCHER
 MS COOLEY S DUKE
 SRC KENTAKE 502 ET
 SRC CLASSIE 019R
 HOO DOO SANDCREEK 9008
 MC HANA 904
 DA MR ABSOLUTE 217P
 EATONS WHITNEY 2882

EPDs	BW	WW	YRL	Milk	TM	SCTL	TSI
	4.4 (.58)	48 (.33)	97 (.31)	12 (.16)	35	0.7 (PE)	245.92

CARCASS	CWT	REA	FAT	MARB	BW	WW	YW
	30 (.16)	.95 (.17)	0.003 (.15)	.37 (.12)	97	609	1297

▶ The first progeny out of this About Time son and a Sandcreek sired dam.
 ▶ Timex's EPDS rank in the top 6% for WW and top 7% for REA and CW.



20

OWTIMEX 9198 PLD

POLLED

Calved 3/5/19 Tattoo 9198 M923703

Act. BW	85
Adj. 205	678
Ratio	112
Adj. 365	1137
Ratio	105
ADG	3.97

OW ABOUT TIMEX 7050 PLD

DC-OW MAXIMIZER 385 PLD

OW MISS MAXIMIZER W58 PLD

OW MISS PAUL T069 PLD

BW	WW	YW	MILK	MATL	CW	REA	FAT	MARB	TSI
0.7	43	76	11	33	22	0.74	0.014	0.17	220.38
Ultrasound			Adj. REA	Ratio	Adj. %IMF	Ratio	Rib Fat		
Data			12.81	100	2.31	96	0.25		

► Nice spread from Birth Weight to Weaning Weight EPDs and he ranks in the top 8% for WW.

18

OWTIMEX 9183 PLD

POLLED

Calved 3/1/19 Tattoo 9183 M923692

Act. BW	110
Adj. 205	637
Ratio	105
Adj. 365	1056
Ratio	98
ADG	4.06

OW ABOUT TIMEX 7050 PLD

WCR SIR PAUL 4377 ET P

OW MISS PAUL 2234

EATONS MISS BONNY 2719

BW	WW	YW	MILK	MATL	CW	REA	FAT	MARB	TSI
7.4	38	74	12	31	15	0.60	0.000	0.25	216.21
Ultrasound			Adj. REA	Ratio	Adj. %IMF	Ratio	Rib Fat		
Data			11.85	92	2.74	114	0.23		

► A Marbling ratio of 114 and an EPD in the top 4% of the breed.

21

OWTIMEX 9207 P/S

SCURRED

Calved 3/6/19 Tattoo 9207 M923765

Act. BW	82
Adj. 205	608
Ratio	100
Adj. 365	1104
Ratio	102
ADG	4.15

OW ABOUT TIMEX 7050 PLD

OW TRADITION 3066

OW MISS TRADITION X57 PLD

EATONS MISS DEVON 2783

BW	WW	YW	MILK	MATL	CW	REA	FAT	MARB	TSI
3.4	42	83	7	28	24	0.76	0.010	0.16	227.15
Ultrasound			Adj. REA	Ratio	Adj. %IMF	Ratio	Rib Fat		
Data			12.62	98	2.13	88	0.19		

► EPDs that rank in the top 5% for YW and TSI and top 15% for WW.

19

OWTIMEX 9190 PLD

POLLED

Calved 3/2/19 Tattoo 9190 M923873

Act. BW	91
Adj. 205	699
Ratio	115
Adj. 365	1281
Ratio	119
ADG	4.64

OW ABOUT TIMEX 7050 PLD

OW KEYSTONE 2057 PLD

OW MISS KEYSTONE 2057 PLD

OW MISS FLASH 3142

BW	WW	YW	MILK	MATL	CW	REA	FAT	MARB	TSI
3.9	47	90	15	39	27	1.02	0.007	0.29	237.04
Ultrasound			Adj. REA	Ratio	Adj. %IMF	Ratio	Rib Fat		
Data			15.47	120	2.69	112	0.21		

► One of largest ribeyes in the sale and an adjusted 205 day weight of 699 pounds. His EPDs rank in the top 2% for Marbling, top 3% for REA and top 7% for WW and YW.

22

NON PAPERED PURBRED

Calved 3/28/19 Tattoo 9268

Act. BW	97
Adj. 205	639
Ratio	105
Adj. 365	1112
Ratio	103
ADG	4.27

OW ABOUT TIMEX 7050 PLD

PUREBRED COW

BW	WW	YW	MILK	MATL	CW	REA	FAT	MARB	TSI
Ultrasound									
Data			Adj. REA	Ratio	Adj. %IMF	Ratio	Rib Fat		
Data			12.00	NA	1.91	NA	0.21		

► Here's a non-papered son of Timex and a purebred Charolais female.



OW Timex 9190 Pld...Lot 19

23

OWTIMEX 9269 PLD

POLLED

Calved 3/28/19 Tattoo 9269 M923825

Act. BW	94
Adj. 205	702
Ratio	116
Adj. 365	1240
Ratio	115
ADG	3.92

OW ABOUT TIMEX 7050 PLD

DC-OW MAXIMIZER 385 PLD

OW MISS MAXIMIZER 4041 PLD

OW MISS PAUL 2234

BW	WW	YW	MILK	MATL	CW	REA	FAT	MARB	TSI
2.5	46	88	10	33	23	0.99	0.007	0.22	234.57
Ultrasound			Adj. REA	Ratio	Adj. %IMF	Ratio	Rib Fat		
Data			15.03	117	2.41	100	0.19		

► Over 700 pounds of weaning weight. His EPDs rank in the top 2% for TSI, top 3% for YW and REA, top 5% for WW and top 7% for Marbling.

24 **OWTIMEX 9270 PLD** **POLLED**
 Calved 3/28/19 Tattoo 9270 M923826

Act. BW	75
Adj. 205	622
Ratio	102
Adj. 365	1080
Ratio	100
ADG	4.14

OW ABOUT TIMEX 7050 PLD
 DC-OW MAXIMIZER 385 PLD
 OW MISS MAXIMIZER W13 PLD
 OW MISS DESIGN S515 PLD ET

BW	WW	YW	MILK	MATL	CW	REA	FAT	MARB	TSI
-2.8	37	67	11	30	17	0.88	0.008	0.29	221.75
Ultrasound			Adj. REA	Ratio	Adj. %IMF	Ratio	Rib Fat		
Data			14.03	109	2.54	105	0.17		

▶ An individual with low birth and good performance EPDs and his carcass ratios for REA and Marbling are will above average.

25 **OWTIMEX 9280** **DEHORND**
 Calved 4/12/19 Tattoo 9280 M923867

Act. BW	78
Adj. 205	668
Ratio	110
Adj. 365	1186
Ratio	110
ADG	4.36

OW ABOUT TIMEX 7050 PLD
 OW FLASH T198 PLD
 OW MISS FLASH 3142
 OW MISS PAUL W111

BW	WW	YW	MILK	MATL	CW	REA	FAT	MARB	TSI
2.2	40	77	17	37	22	0.81	0.004	0.23	224.20
Ultrasound			Adj. REA	Ratio	Adj. %IMF	Ratio	Rib Fat		
Data			11.90	NA	2.49	NA	0.28		

▶ Low birth weight, good weaning data in a desirable combination.

26 **OW COLOSSUS 5133-9068 PLD** **POLLED**
 Calved 2/7/19 Tattoo 9068 M923359

Act. BW	75
Adj. 205	620
Ratio	102
Adj. 365	1004
Ratio	93
ADG	3.55

OW COLOSSUS 5133 PLD
 OW TRADITION 3066
 OW MISS TRADITION X96
 RAR LADY BOWIE 1140 PLD

BW	WW	YW	MILK	MATL	CW	REA	FAT	MARB	TSI
0.5	38	66	12	31	23	0.64	0.005	-0.06	205.48
Ultrasound			Adj. REA	Ratio	Adj. %IMF	Ratio	Rib Fat		
Data			12.35	96	2.02	84	0.15		

▶ Growth EPDs that rank in the top 30% for YW and top 25% for WW.

27 **OW COLOSSUS 5133-9133 PLD** **POLLED**
 Calved 2/19/19 Tattoo 9133 M923451

Act. BW	82
Adj. 205	649
Ratio	107
Adj. 365	1065
Ratio	99
ADG	4.00

OW COLOSSUS 5133 PLD
 OW ZEROX Y33 PLD
 OW MISS ZEROX 5282 PLD
 OW MISS BULLSEYE U255 PLD

BW	WW	YW	MILK	MATL	CW	REA	FAT	MARB	TSI
1.3	41	70	11	31	18	0.57	-0.001	0.05	210.21
Ultrasound			Adj. REA	Ratio	Adj. %IMF	Ratio	Rib Fat		
Data			12.41	97	1.84	76	0.09		

▶ EPDs ranking him in the top 15% for WW, top 20% for YW and top 35% for TSI.

28 **OW COLOSSUS 5133-9146 P/S** **SCURRED**
 Calved 2/23/19 Tattoo 9146 M923478

Act. BW	87
Adj. 205	703
Ratio	116
Adj. 365	1170
Ratio	108
ADG	3.79

OW COLOSSUS 5133 PLD
 DC-OW SANDCREEK 375
 OW MISS SANDCREEK Y48 PLD
 OW MISS DESIGN W63 PLD

BW	WW	YW	MILK	MATL	CW	REA	FAT	MARB	TSI
-0.4	42	68	11	32	21	0.68	-0.006	0.02	209.38
Ultrasound			Adj. REA	Ratio	Adj. %IMF	Ratio	Rib Fat		
Data			13.07	102	1.89	78	0.15		

▶ An adjusted 205 day weight of 703 pounds along with good growth EPDs.

29 **OW COLOSSUS 5133-9182 PLD** **POLLED**
 Calved 3/1/19 Tattoo 9182 M923691

Act. BW	96
Adj. 205	612
Ratio	101
Adj. 365	1140
Ratio	106
ADG	4.63

OW COLOSSUS 5133 PLD
 OW EXPEDITER T062 PLD
 OW MISS EXPEDITER W120 PLD
 OW VOLUMPTOUS 3038 ET

BW	WW	YW	MILK	MATL	CW	REA	FAT	MARB	TSI
4.5	36	72	17	35	25	0.57	-0.016	-0.01	210.78
Ultrasound			Adj. REA	Ratio	Adj. %IMF	Ratio	Rib Fat		
Data			12.25	95	2.22	92	0.08		

▶ A Colossus son out of an Expediter female.



E **OW COLOSSUS 5133 PLD**
 Calved 2/12/15 Polled **M856691**

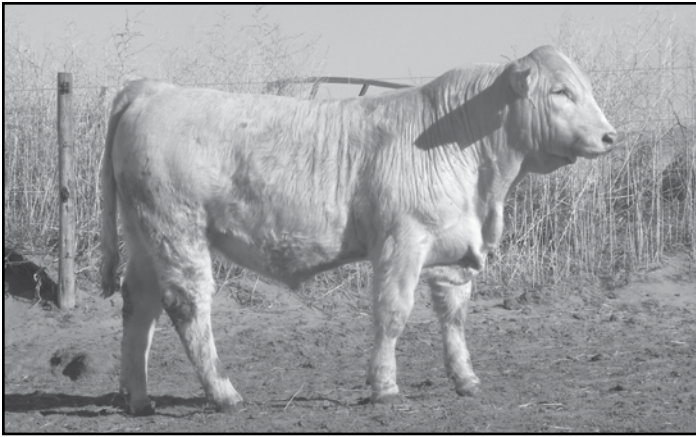
SCR SUPER CHARLIE 0767 PD
 RC-OW COLOSSUS 0361 P
 RC CHARLOTTE 0018
 DA NEW DESIGN 104 P ET
 OW MISS DESIGN U510 PLD ET
 OW LITTLE LACY

SCR CHARLIE 5702
 SC SUPER LADY 6744 PLD
 RC WALLSTREET 9617
 RC CHARLOTTE 9805
 BALDRIDGE FASTTRACK 82F
 SCF MISS BONNIE MAC
 HPF MAC 7105 PLD ET
 GS LACY 2201 P ET

EPDs	BW	WW	YRL	Milk	TM	SCTL	TSI
	1.6 (.32)	43 (.37)	79 (.36)	17 (.21)	38	0.8 (.32)	215.96

CARCASS	CWT	REA	FAT	MARB	BW	WW	YW
	32 (.20)	.71 (.21)	-0.01 (.15)	-0.09 (.13)	87	772	1343

▶ A sire that provides length and performance to his progeny.
 ▶ His EPDs rank in the top 5% for CW, top 15% for WW and YW, top 25% for TSI.
 ▶ There are eight sons in the offering.



OW Colossus 5133-9185 Pld...Lot 30

30 OW COLOSSUS 5133-9185 PLD **POLLED**
 Calved 3/2/19 Tattoo 9185 M923693

Act. BW	87
Adj. 205	646
Ratio	106
Adj. 365	1129
Ratio	105
ADG	3.87

OW COLOSSUS 5133 PLD
 OW KEYSTONE 2057 PLD
 OW MISS KEYSTONE 5258 PLD
 OW MISS DIVIDEND 3123

BW	WW	YW	MILK	MATL	CW	REA	FAT	MARB	TSI
1.5	38	70	18	37	20	0.49	0.004	0.04	211.08
Ultrasound			Adj. REA	Ratio	Adj. %IMF	Ratio	Rib Fat		
Data			11.97	93	1.97	82	0.11		

▶ A long sided, smooth made individual that will add weight to his calves.

31 OW COLOSSUS 5133-9208 PLD **POLLED**
 Calved 3/7/19 Tattoo 9208 M923767

Act. BW	79
Adj. 205	639
Ratio	105
Adj. 365	1037
Ratio	96
ADG	3.90

OW COLOSSUS 5133 PLD
 OW FLASH T198 PLD
 OW MISS FLASH 2092 PLD
 OW MISS SHOWCUP S518 PLD ET

BW	WW	YW	MILK	MATL	CW	REA	FAT	MARB	TSI
0.8	32	54	15	31	16	0.44	-0.001	-0.05	193.57
Ultrasound			Adj. REA	Ratio	Adj. %IMF	Ratio	Rib Fat		
Data			11.34	88	1.79	74	0.13		

▶ Low birth weight and solid performance.

32 OW COLOSSUS 5133-9209 PLD **POLLED**
 Calved 3/7/19 Tattoo 9209 M923768

Act. BW	78
Adj. 205	655
Ratio	108
Adj. 365	1117
Ratio	104
ADG	4.17

OW COLOSSUS 5133 PLD
 OW EXPDITER T062 PLD
 OW MISS EXPDITER W137 PLD
 EATONS SABRA 1533

BW	WW	YW	MILK	MATL	CW	REA	FAT	MARB	TSI
1.1	34	65	17	34	26	0.72	-0.006	0.00	207.68
Ultrasound			Adj. REA	Ratio	Adj. %IMF	Ratio	Rib Fat		
Data			13.84	108	2.13	88	0.13		

▶ A bull that ratioed 108 for both WW and REA.



OW Colossus 5133-9230 Pld...Lot 33

33 OW COLOSSUS 5133-9230 PLD **POLLED**
 Calved 3/13/19 Tattoo 9230 M923776

Act. BW	69
Adj. 205	686
Ratio	113
Adj. 365	1230
Ratio	114
ADG	4.57

OW COLOSSUS 5133 PLD
 OW FLASH T198 PLD
 OW MISS FLASH Y130 PLD
 DA BONNIE MAC 210 P ET

BW	WW	YW	MILK	MATL	CW	REA	FAT	MARB	TSI
-0.8	41	75	16	36	26	0.91	0.004	0.00	218.56
Ultrasound			Adj. REA	Ratio	Adj. %IMF	Ratio	Rib Fat		
Data			15.22	118	2.29	95	0.17		

▶ Big ribeye here - his EPDs rank in the top 8% for REA and top 25% for BW, WW and TSI.



F DC-OW MAXIMIZER 385 PLD
 Calved 3/17/03 Polled **M675875**

- | | | |
|-------------------------|---------------------------|--------------------------|
| FC MAGIC WIND 0105 P | LT WYOMING WIND 4020 PLD | { SCHURRTOP 5627 |
| FUNKS MS HI MAGIC 704 P | | { LT CHAP'S LADY 2170 P |
| | | { RIKLI'S HI MAGIC 102 |
| | | { ACF MISS CONTENDER 736 |
| | SCV JOE MONTANA | { WCR SIR FAB MAC 809 |
| DC MISS JOSEY 0215 PLD | | { SCV JUGS AGTORA |
| | | { SCV MONTANA SENTINEL |
| | PD MISS SENTINEL 5323 PLD | { SCR MISS LEGEND 1126 |

EPDs	BW	WW	YRL	Milk	TM	SCTL	TSI
	-7.1 (.85)	25 (.78)	31 (.79)	8 (.64)	21	1.2 (.71)	181.23

CARCASS	CWT	REA	FAT	MARB	BW	WW	YW
	0 (.34)	.61 (.33)	.032 (.29)	.11 (.26)	80	639	1289

- ▶ Maximizer 385 is a Birth Weight Trait Leader and ranks in the top 1% for BW EPD.
- ▶ A proven calving ease sire with performance.
- ▶ There are six sons in the offering.

34

OW MAXIMIZER 9006 PLD

POLLED

Calved 1/5/19	Tattoo 9006	M922549	Act. BW	65
			Adj. 205	635
			Ratio	105
			Adj. 365	1041
			Ratio	97
			ADG	3.52

DC-OW MAXIMIZER 385PLD

WCR SIR PRIME CUT 3114 P

OW MISS PRIME CUT 7013 PLD

OW MISS IMPRESSIVE 5099 PLD

BW	WW	YW	MILK	MATL	CW	REA	FAT	MARB	TSI
-5.6	23	34	10	21	-2	0.31	0.033	0.10	182.59
Ultrasound			Adj. REA	Ratio	Adj. %IMF	Ratio	Ratio	Ratio	Rib Fat
Data			11.28	88	2.12	88	0.3		

▶ A 65 pound birth weight and ranks in the top 1% for BW EPD.



This top bull from the 2017 sale is a maternal brother to Lot 32

35

OW MAXIMIZER 9011 PLD

POLLED

Calved 1/6/19	Tattoo 9011	M922552	Act. BW	73
			Adj. 205	639
			Ratio	105
			Adj. 365	1050
			Ratio	97
			ADG	3.22

DC-OW MAXIMIZER 385PLD

OW DESIGN S519

OW MISS DESIGN S519-7001 PLD

OW MISS EXPEDITER T062-Y120 PD

BW	WW	YW	MILK	MATL	CW	REA	FAT	MARB	TSI
-3.2	26	39	13	26	2	0.66	0.001	0.07	187.77
Ultrasound			Adj. REA	Ratio	Adj. %IMF	Ratio	Ratio	Ratio	Rib Fat
Data			13.50	105	2.17	90	0.15		

▶ A well patterned, smooth made bull that ratioed 105 for REA.

37

OW MAXIMIZER 9023 PLD

POLLED

Calved 1/13/19	Tattoo 9023	M922610	Act. BW	71
			Adj. 205	664
			Ratio	109
			Adj. 365	1163
			Ratio	108
			ADG	4.26

DC-OW MAXIMIZER 385PLD

OW MAXIMIZER S013 4253 PLD

OW MISS MAXIMIZER 4253-7170 PD

OW MISS SILVER X222 PLD

BW	WW	YW	MILK	MATL	CW	REA	FAT	MARB	TSI
-3.2	35	60	10	28	13	0.75	0.025	0.14	209.04
Ultrasound			Adj. REA	Ratio	Adj. %IMF	Ratio	Ratio	Ratio	Rib Fat
Data			14.19	110	2.36	98	0.19		

▶ Ratioed 109 for WW and 110 for REA.

36

OW MAXIMIZER 9017 PLD

POLLED

Calved 1/9/19	Tattoo 9017	M922606	Act. BW	79
			Adj. 205	610
			Ratio	100
			Adj. 365	1029
			Ratio	95
			ADG	3.79

DC-OW MAXIMIZER 385PLD

DA NEW DESIGN 104 P ET

OW MISS DESIGN 7037 PLD

OW MISS DIVIDEND 5225 PLD

BW	WW	YW	MILK	MATL	CW	REA	FAT	MARB	TSI
-2.8	29	43	10	25	1	0.60	0.010	0.08	189.81
Ultrasound			Adj. REA	Ratio	Adj. %IMF	Ratio	Ratio	Ratio	Rib Fat
Data			12.64	98	2.16	90	0.15		

▶ Maximizer son out of a Design female - both parents offer calving ease.

38

OW MAXIMIZER 9083 PLD

POLLED

Calved 2/9/19	Tattoo 9083	M923363	Act. BW	85
			Adj. 205	668
			Ratio	110
			Adj. 365	1122
			Ratio	104
			ADG	3.87

DC-OW MAXIMIZER 385PLD

RC-OW COLOSSUS 0361 P

OW MISS COLOSSUS 3519 PLD ET

GS DAISY 9017 PLD ET

BW	WW	YW	MILK	MATL	CW	REA	FAT	MARB	TSI
-1.6	34	50	15	32	13	0.78	0.013	0.08	194.67
Ultrasound			Adj. REA	Ratio	Adj. %IMF	Ratio	Ratio	Ratio	Rib Fat
Data			14.17	110	2.29	95	0.15		

▶ A negative birth EPD to go along with a ratio of 110 for WW and REA.

Reference Sire



OW Miss Design S519-W87 Pld

G OW MAX FORCE 3044 PLD

Calved 1/14/13 Polled M827223

- FC MAGIC WIND 0105 P
- DC-OW MAXIMIZER 385 PLD
- DC MISS JOSEY 0215 PLD
- OW DESIGN S519
- OW MISS DESIGN S519-W87 PLD
- OW MISS SHOWCUP S501 PLD ET
- LT WYOMING WIND 4020 PLD
- FUNKS MS HI MAGIC 704P
- SCV JOE MONTANA
- PD MISS SENTINEL 5323 PLD
- DA NEW DESIGN 104 P ET
- JWK MAVIS F209 ET
- DS ALI SHOWCUP PLD 825 ET
- EATONS LEB0 1506

EPDs	BW	WW	YRL	Milk	TM	SCTL	TSI
	1.1 (.75)	40 (.59)	70 (.59)	15 (.23)	35	2.7 (.51)	214.42
CARCASS	CWT	REA	FAT	MARB	BW	WW	YW
	30 (.28)	.92 (.27)	.013 (.24)	.15 (.20)	76	739	1301

▶ Max Force has impressive numbers. He ranks in the top 1% for Scrotal Circumference, top 8% for CW, top 9% for REA, top 20% for WW, top 25% for YW and Milk and top 30% for Marbling and TSI.



OW Maximizer 9097 Pld...Lot 39

39 OW MAXIMIZER 9097 PLD **POLLED**
 Calved 2/12/19 Tattoo 9097 M923392

Act. BW	91
Adj. 205	725
Ratio	119
Adj. 365	1315
Ratio	122
ADG	4.42

DC-OW MAXIMIZER 385PLD
 RC-OW COLOSSUS 0361 P
 OW MISS COLOSSUS 3507 PLD ET
 GS DAISY 9017 PLD ET

BW	WW	YW	MILK	MATL	CW	REA	FAT	MARB	TSI
0.1	41	69	14	34	22	0.78	0.016	0.03	209.53
Ultrasound			Adj. REA	Ratio	Adj. %IMF	Ratio	Rib Fat		
Data			14.32	111	1.97	82	0.19		

▶ Long sided son of Maximizer whose 205 day weight is 725 pounds.

40 OW MAX FORCE 9100 PLD **POLLED**
 Calved 2/13/19 Tattoo 9100 M923393

Act. BW	85
Adj. 205	616
Ratio	101
Adj. 365	1144
Ratio	106
ADG	4.66

OW MAX FORCE 3044 PLD
 MC-OW SANDCREEK 375
 OW MISS SANDCREEK S 058 PLD
 RAC KALLA 1063 PLD ET

BW	WW	YW	MILK	MATL	CW	REA	FAT	MARB	TSI
-0.4	36	63	10	28	18	0.56	0.005	0.15	208.53
Ultrasound			Adj. REA	Ratio	Adj. %IMF	Ratio	Rib Fat		
Data			12.23	95	2.64	110	0.15		

▶ His marbling ratio is 110 to accompany solid performance.



OW Max Force 9224...Lot 41

41 OW MAX FORCE 9224 PLD **POLLED**
 Calved 3/10/19 Tattoo 9224 M923774

Act. BW	66
Adj. 205	667
Ratio	110
Adj. 365	1120
Ratio	104
ADG	4.06

OW MAX FORCE 7034 PLD
 DA NEW DESIGN 104 P ET
 OW MISS DESIGN Y99 PLD
 OW MISS SANDCREEK S 058 PLD

BW	WW	YW	MILK	MATL	CW	REA	FAT	MARB	TSI
-4.4	36	57	11	28	14	0.69	-0.004	0.14	206.63
Ultrasound			Adj. REA	Ratio	Adj. %IMF	Ratio	Rib Fat		
Data			14.38	112	2.77	115	0.21		

▶ WW ratio of 110, REA ratio 112 and Marbling ratio 115 with a 66 pound birth weight.

Reference Sire



H OW MESSENGER 7229 PLD

Calved 2/26/17 Polled M891226

OW MAXIMIZER S013
 OW MAXIMIZER S013-4253 PLD
 OW MISS IMPRESSIVE U523 PLD ET
 OW DIVIDEND X97 PLD
 OW MISS DIVIDEND 2232 PLD
 OW MS SANDCREEK 5080

DC-OW MAXIMIZER 385 PLD
 EATONS GENA 1559
 JWK IMPRESSIVE D040 ET
 SCF MISS BONNIE MAC
 RC-OW COLOSSUS 0361
 OW MS SHOWCUP 5010 PLD ET
 MC-OW SANDCREEK 375
 RAR LADY STOLI 2045 PLD

EPDs	BW	WW	YRL	Milk	TM	SCTL	TSI
	-0.8 (.52)	40 (.32)	72 (.31)	15 (.15)	36	1.4 (.PE)	215.66
CARCASS	CWT	REA	FAT	MARB	BW	WW	YW
	29 (.14)	.69 (.15)	.028 (.13)	.15 (.06)	87	715	1272

▶ Messenger has EPDs that rank him in the top 20% for WW, top 25% for YW and TSI and top 30% for Marbling and BW.
 ▶ His pedigree goes back to Maximizer and the Bonnie Mac cow on the top side mated with Sandcreek and the Showcup 5010 cow on the maternal side.

42

OW MESSENGER 9234 PLD

POLLED

Calved 3/17/19	Tattoo 9234	M923779	Act. BW	89
			Adj. 205	658
			Ratio	108
			Adj. 365	1157
			Ratio	107
			ADG	4.33

OW MESSENGER 7229 PLD

OW IMPRESSIVE U502 PLD ET

OW MISS IMPRESSIVE 4006 PLD

OW MS PRIME CUT 5102 PLD

BW	WW	YW	MILK	MATL	CW	REA	FAT	MARB	TSI
-0.4	35	65	15	32	22	0.47	0.024	0.20	210.50
Ultrasound			Adj. REA	Ratio	Adj. %IMF	Ratio	Rib Fat		
Data			11.98	93	3.00	125	0.21		

▶ A Messenger son that ratioed 125 for %IMF and 108 for WW.

44

OW MESSENGER 9261

DEHORND

Calved 3/27/19	Tattoo 9261	M923802	Act. BW	80
			Adj. 205	656
			Ratio	108
			Adj. 365	1130
			Ratio	105
			ADG	3.88

OW MESSENGER 7229 PLD

DC-OW MAXIMIZER 385 PLD

OW MISS MAXIMIZER 4033 PLD

OW MISS DIVIDEND 2200 PLD

BW	WW	YW	MILK	MATL	CW	REA	FAT	MARB	TSI
-2.1	38	65	16	35	21	0.79	0.025	0.16	212.45
Ultrasound			Adj. REA	Ratio	Adj. %IMF	Ratio	Rib Fat		
Data			13.92	108	2.85	118	0.23		

▶ His carcass data shows ratios of 118 for %IMF, 108 for REA and 108 for WW.



OW Messenger 9244 ..Lot 43

45

OW MAXIMIZER 2077-9050

DEHORND

Calved 2/4/19	Tattoo 9050	M923183	Act. BW	69
			Adj. 205	646
			Ratio	106
			Adj. 365	1049
			Ratio	97
			ADG	3.60

OW MAXIMIZER S013-2077 PLD

OW NETWORK X120 PLD

OW MISS NETWORK 6103 PLD

OW MISS SANDCREEK 2093 PLD

BW	WW	YW	MILK	MATL	CW	REA	FAT	MARB	TSI
-3.8	28	51	11	25	7	0.66	0.013	0.15	202.35
Ultrasound			Adj. REA	Ratio	Adj. %IMF	Ratio	Rib Fat		
Data			13.90	108	2.16	90	0.21		

▶ Birth weight of 69 pounds along with a WW ratio of 106 and REA ratio of 108.

46

OW MAXIMIZER 2077-9065 PLD

POLLED

Calved 2/7/19	Tattoo 9065	M923357	Act. BW	80
			Adj. 205	622
			Ratio	102
			Adj. 365	1057
			Ratio	98
			ADG	3.98

OW MAXIMIZER S013-2077 PLD

FF ABOUT TIME Y07

OW MISS ABOUT TIME 6225 PLD

OW MISS MAXIMIZER T077 PLD

BW	WW	YW	MILK	MATL	CW	REA	FAT	MARB	TSI
-0.6	31	55	11	26	12	0.57	0.012	0.18	203.37
Ultrasound			Adj. REA	Ratio	Adj. %IMF	Ratio	Rib Fat		
Data			12.55	98	2.22	92	0.19		

▶ A moderate framed son of 2077 with solid numbers.

43

OW MESSENGER 9244

DEHORND

Calved 3/20/19	Tattoo 9244	M923794	Act. BW	91
			Adj. 205	678
			Ratio	112
			Adj. 365	1256
			Ratio	116
			ADG	4.75

OW MESSENGER 7229 PLD

OW DIVIDEND X97 PLD

OW MISS DIVIDEND 3077 PLD

OW MISS NOVIO X37 PLD

BW	WW	YW	MILK	MATL	CW	REA	FAT	MARB	TSI
1.7	40	78	17	37	30	0.83	0.017	0.08	220.64
Ultrasound			Adj. REA	Ratio	Adj. %IMF	Ratio	Rib Fat		
Data			13.92	108	1.95	81	0.17		

▶ His EPDs rank in the top 15% for CW and TSI, top 20% for REA, top 9% for YW and top 15% for WW.



I OW MAXIMIZER S013-2077 PLD

Calved 1/29/12 Polled M812922

- DC-OW MAXIMIZER 385 PLD
- OW MAXIMIZER S013
- EATONS GENA 1559
- RC-OW COLOSSUS 0361 P
- 9W MISS COLOSSUS W148 PLD
- OW MISS PAUL S 164 PLD
- FC MAGIC WIND 0105P
- DC MISS JOSEY 0215 PLD
- LT POLLED VALUE 9089
- EATONS GENA 9681
- SCR SUPER CHARLIE 767 PLD
- RC CHRLOTTE 0018
- WCR SIR PAUL 4377 ET P
- OW MISS USA 1001 P

EPDs	BW	WW	YRL	Milk	TM	SCTL	TSI
	-4.6 (.79)	26 (.62)	47 (.60)	8 (.24)	21	0.9 (.50)	198.09
CARCASS	CWT	REA	FAT	MARB	BW	WW	YW
	8 (.27)	.40 (.26)	.017 (.23)	.18 (.20)	78	777	1375

- ▶ 2077 is a bull we have been using to service first calf heifers.
- ▶ His sons are moderately framed with good thickness and eye appeal.
- ▶ 2077 has EPDs that rank him in the top 3% for BW, top 5% for CE and top 25% for Marbling.
- ▶ This sale features nine sons of Maximizer 2077.

47 OW MAXIMIZER 2077-9106 DEHORND
 Calved 2/14/19 Tattoo 9106 M923395

Act. BW	87
Adj. 205	616
Ratio	101
Adj. 365	1120
Ratio	104
ADG	4.36

OW MAXIMIZER S013-2077 PLD
 MC-OW SANDCREEK 375
 OW MISS SANDCREEK X139
 OW MISS COLOSSUS U 091

BW	WW	YW	MILK	MATL	CW	REA	FAT	MARB	TSI
-2.4	26	47	12	25	3	0.47	0.005	0.17	197.51
Ultrasound			Adj. REA	Ratio	Adj. %IMF	Ratio	Rib Fat		
Data			12.74	99	2.43	101	0.17		

► Maximizer 2077 son out of a Sandcreek female.

48 OW MAXIMIZER 2077-9145 PLD POLLED
 Calved 2/22/19 Tattoo 9145 M923477

Act. BW	65
Adj. 205	623
Ratio	103
Adj. 365	1073
Ratio	99
ADG	3.86

OW MAXIMIZER S013-2077 PLD
 OW ZEROX Y33 PLD
 OW MISS ZEROX 5096 PLD
 OW MISS DESIGN T210 PLD

BW	WW	YW	MILK	MATL	CW	REA	FAT	MARB	TSI
-3.7	33	57	7	23	12	0.50	0.011	0.16	206.40
Ultrasound			Adj. REA	Ratio	Adj. %IMF	Ratio	Rib Fat		
Data			12.26	95	2.41	100	0.23		

► Low birth weight and above average weaning weight.

49 OW MAXIMIZER 2077-9166 PLD POLLED
 Calved 2/27/19 Tattoo 9166 M923683

Act. BW	67
Adj. 205	628
Ratio	103
Adj. 365	1100
Ratio	102
ADG	4.37

OW MAXIMIZER S013-2077 PLD
 FF ABOUT TIME Y07
 OW MISS ABOUT TIME 6217 PLD
 OW MISS SHOWCUP S508 PLD ET

BW	WW	YW	MILK	MATL	CW	REA	FAT	MARB	TSI
-2.1	31	60	8	24	15	0.65	0.010	0.19	211.04
Ultrasound			Adj. REA	Ratio	Adj. %IMF	Ratio	Rib Fat		
Data			12.93	101	2.25	93	0.22		

► Moderate framed son of 2077 that has a 67 pound birth weight.

50 OW MAXIMIZER 2077-9180 DEHORND
 Calved 3/1/19 Tattoo 9180 M923689

Act. BW	107
Adj. 205	638
Ratio	105
Adj. 365	1107
Ratio	103
ADG	4.06

OW MAXIMIZER S013-2077 PLD
 OW DIVIDEND X97 PLD
 OW MISS DIVIDEND 4105 PLD
 OW MISS SANDCREEK X52 PLD

BW	WW	YW	MILK	MATL	CW	REA	FAT	MARB	TSI
2.5	32	57	14	30	9	0.48	0.013	0.16	200.94
Ultrasound			Adj. REA	Ratio	Adj. %IMF	Ratio	Rib Fat		
Data			12.25	95	2.40	100	0.23		

► A bull that ratioed 105 for WW and 100 for Marbling.

51 OW MAXIMIZER 2077-9186 PLD POLLED
 Calved 3/2/19 Tattoo 9186 M923694

Act. BW	65
Adj. 205	659
Ratio	108
Adj. 365	1177
Ratio	109
ADG	4.62

OW MAXIMIZER S013-2077 PLD
 DA NEW DESIGN 104P ET
 OW MISS DESIGN X24 PLD
 OW MISS SANDCREEK U 210

BW	WW	YW	MILK	MATL	CW	REA	FAT	MARB	TSI
-6.7	36	71	12	30	22	0.42	0.012	0.09	221.23
Ultrasound			Adj. REA	Ratio	Adj. %IMF	Ratio	Rib Fat		
Data			11.57	90	1.93	80	0.27		

► This bull's EPDs rank in the top 1% for BW, top 20% for YW, top 30% for WW and top 15% for TSI.

52 OW MAXIMIZER 2077-9263 P/S SCURRED
 Calved 3/27/19 Tattoo 9263 M923804

Act. BW	82
Adj. 205	656
Ratio	108
Adj. 365	1106
Ratio	103
ADG	3.91

OW MAXIMIZER S013-2077 PLD
 OW-SCH TITAN Y14 PLD
 OW MISS TITAN 4202 PLD
 OW MISS SIGNATURE 1050ET

BW	WW	YW	MILK	MATL	CW	REA	FAT	MARB	TSI
-2.2	33	56	12	29	12	0.56	0.009	0.12	202.84
Ultrasound			Adj. REA	Ratio	Adj. %IMF	Ratio	Rib Fat		
Data			13.12	102	2.01	83	0.15		

► Ratios of 108 for WW and 102 for REA.

53 OW MAXIMIZER 2077-9272 PLD POLLED
 Calved 4/1/19 Tattoo 9272 M923827

Act. BW	85
Adj. 205	701
Ratio	115
Adj. 365	1279
Ratio	119
ADG	4.71

OW MAXIMIZER S013-2077 PLD
 OW-SCH TITAN Y14 PLD
 OW MISS TITAN 4209 PLD
 OW MISS SHOW CUP 4132 ET

BW	WW	YW	MILK	MATL	CW	REA	FAT	MARB	TSI
-1.7	40	71	10	30	21	0.90	0.011	0.13	218.53
Ultrasound			Adj. REA	Ratio	Adj. %IMF	Ratio	Rib Fat		
Data			15.19	118	2.05	85	0.17		

► A very complete bull with an adjusted 205 day weight over 700 pounds and an REA ratio of 118.



OW Maximizer 2077-9272 Pld...Lot 53

Reference

Sire
J

OW KEYSTONE 2057 PLD

Calved 1/22/12 Polled M812911

JWK IMPRESSIVE D040 ET
 OW IMPRESSIVE U502 PLD ET
 JWK VOLUPTUOUS E200 ET
 DC-OW MAXIMIZER 385 PLD
 OW MISS MAXIMIZER W13 PLD
 OW MISS DESIGN S515 PLD ET
 WCR SIR FA MAC 2244
 HBR LADY LIZ 721P
 VCR SIR DUKE 914 PLD
 LEMMON ACTRESS X140
 FC MAGIC WIND 0105P
 DC MISS JOSEY 0215 PLD
 DA NEW DESIGN 104 P ET
 JWK MAVIS F209 ET

EPDs	BW	WW	YRL	Milk	TM	SCTL	TSI
	-3.5 (.78)	26 (.57)	34 (.57)	14 (.25)	27	1.6 (.47)	186.15

CARCASS	CWT	REA	FAT	MARB	BW	WW	YW
	5 (.27)	.37 (.26)	.010 (.24)	.32 (.20)	88	735	1241

- ▶ Keystone is an Impressive U502 son out of a Maximizer female that is producing moderate framed, thick made sons.
- ▶ Keystone ranks in the top 4% for Marbling, top 5% for Scrotal Circumference and top 6% for BW.

Feed efficiency is a significant profit driver. One pound of dry matter conversion can amount to more than \$40 with today's feed cost. More energy is needed by an animal to put on fat versus muscle, thus resulting in inferior feed conversion.



OW Keystone 9148 Pld...Lot 54

54

OW KEYSTONE 9148 PLD

POLLED

Calved 2/23/19 Tattoo 9148 M923479

OW KEYSTONE 2057 PLD

OW SANDMAN W150 PLD

OW MISS SANDMAN 2038

OW MISS TRADITION X96

BW	WW	YW	MILK	MATL	CW	REA	FAT	MARB	TSI
1.9	35	52	13	30	11	0.67	0.015	0.20	195.33
Ultrasound Data		Adj. REA	Ratio	Adj. %IMF	Ratio	Ratio	Rib Fat		
		13.27	103	2.64	110	0.21			

- ▶ A Keystone son that has lots to offer. His ratios are 112 for WW, 110 for %IMF, 103 for REA, along with EPDs in the top 10% for Marbling and top 35% for WW.

55

OW KEYSTONE 9205 PLD

POLLED

Calved 3/6/19 Tattoo 9205 M923764

Act. BW	73
Adj. 205	629
Ratio	104
Adj. 365	1034
Ratio	96
ADG	3.71

OW KEYSTONE 2057 PLD

MC-OW SANDCREEK 375

OW MISS SANDCREEK 2093 PLD

OW MISS MAXIMIZER S013-X148 PL

BW	WW	YW	MILK	MATL	CW	REA	FAT	MARB	TSI
-4.9	23	36	13	25	4	0.28	0.005	0.28	189.73
Ultrasound Data		Adj. REA	Ratio	Adj. %IMF	Ratio	Rib Fat			
		11.02	86	2.78	115	0.15			

- ▶ His EPDs rank in the top 2% for Marbling and BW.

56

OW KEYSTONE 9265 PLD

POLLED

Calved 3/27/19 Tattoo 9265 M923822

Act. BW	82
Adj. 205	639
Ratio	105
Adj. 365	1079
Ratio	100
ADG	3.90

OW KEYSTONE 2057 PLD

OW DIVIDEND X97 PLD

OW MISS DIVIDEND 2198 PLD

RAR LADY STOLI 395 PLD

BW	WW	YW	MILK	MATL	CW	REA	FAT	MARB	TSI
-1.8	26	41	12	25	6	0.40	0.013	0.24	189.50
Ultrasound Data		Adj. REA	Ratio	Adj. %IMF	Ratio	Rib Fat			
		12.12	94	2.84	118	0.21			

- ▶ This Keystone son ratioed 118 for Marbling and 105 for WW.

57

OW KEYSTONE 9267 PLD

POLLED

Calved 3/28/19 Tattoo 9267 M923824

Act. BW	73
Adj. 205	728
Ratio	120
Adj. 365	1192
Ratio	111
ADG	4.20

OW KEYSTONE 2057 PLD

DC-OW MAXIMIZER 385 PLD

OW MISS MAXIMIZER 3006 PLD

OW MISS DUKE Y2 PLD

BW	WW	YW	MILK	MATL	CW	REA	FAT	MARB	TSI
-3.8	39	58	14	33	13	0.68	0.018	0.19	206.43
Ultrasound Data		Adj. REA	Ratio	Adj. %IMF	Ratio	Rib Fat			
		14.43	112	2.37	98	0.25			

- ▶ An adjusted WW of 728 pounds that ratioed 120. His EPDs rank in the top 4% for BW, top 15% for Marbling and top 20% for WW.

Reference

Sire
K

OW KEYSTONE 5064 PLD

Calved 1/22/15 Polled M856102

OW KEYSTONE 2057 PLD

OW IMPRESSIVE U502 PLD ET

OW KEYSTONE 2057 PLD

OW MISS MAXIMIZER W13 PLD

OW NETWORK 3113 PLD

OW MISS NETWORK 3113 PLD

OW MISS NOVIO X108 PLD

JWK IMPRESSIVE D040 ET
 JWK VOLUPTUOUS E200 ET
 DC-OW MAXIMIZER 385 PLD
 OW MISS DESIGN 5515 PLD ET
 WCR SIR PAUL 4377 ET P
 OW MISS MAXIMIZER 5S 092 PLD
 ABC EL NOVIO
 OW MS DESIGN 5521 PLD ET

EPDs	BW	WW	YRL	Milk	TM	SCTL	TSI
	-5.0 (.68)	20 (.42)	27 (.38)	17 (.14)	27	1.9 (.28)	180.60
CARCASS	CWT	REA	FAT	MARB	BW	WW	YW
	1 (.16)	.38 (.19)	-0.008 (.17)	.25 (.13)	79	743	1221

- ▶ We are using this Keystone son on heifers.
- ▶ His EPDS rank in the top 1% for Scrotal Circumference, top 3% for BW and top 10% for Marbling.

58

OW KEystone 5064-9030 PLD **POLLED**

Calved 1/26/19	Tattoo 9030	M923124	Act. BW	73
			Adj. 205	674
			Ratio	111
			Adj. 365	1122
			Ratio	104
			ADG	3.96

OW KEystone 5064 PLD

OW DESIGN S519

OW MISS DESIGN S519-7018 PLD

OW MISS SANDCREEK X42

BW	WW	YW	MILK	MATL	CW	REA	FAT	MARB	TSI
-2.8	29	46	20	34	7	0.33	-0.012	0.27	196.80
Ultrasound			Adj. REA	Ratio	Adj. %IMF	Ratio	Rib Fat		
Data			11.38	89	3.23	134	0.17		

► This 5064 son ratioed 134 for Marbling and 111 for WW.

60

OW NETFLIX 9149 PLD **POLLED**

Calved 2/23/19	Tattoo 9149	M923480	Act. BW	86
			Adj. 205	667
			Ratio	110
			Adj. 365	1121
			Ratio	104
			ADG	3.89

OW NETFLIX 7085 PLD

MC-OW SANDCREEK 375

OW MISS SANDCREEK Y31

OW MISS EXPEDITER W137 PLD

BW	WW	YW	MILK	MATL	CW	REA	FAT	MARB	TSI
-0.6	28	53	16	31	18	0.61	0.001	0.17	201.22
Ultrasound			Adj. REA	Ratio	Adj. %IMF	Ratio	Rib Fat		
Data			12.67	99	2.66	110	0.19		

► This bull has ratios of 110 for both WW and Marbling.

59

OW KEystone 5064-9033 PLD **POLLED**

Calved 1/27/19	Tattoo 9033	M923126	Act. BW	70
			Adj. 205	673
			Ratio	111
			Adj. 365	1068
			Ratio	99
			ADG	3.22

OW KEystone 5064 PLD

OW ZEROX Y33 PLD

OW MISS ZEROX 7129 PLD

OW MISS JACOB U 088 PLD

BW	WW	YW	MILK	MATL	CW	REA	FAT	MARB	TSI
-1.5	37	54	12	31	7	0.27	-0.013	0.27	200.64
Ultrasound			Adj. REA	Ratio	Adj. %IMF	Ratio	Rib Fat		
Data			10.69	83	2.94	122	0.11		

► Low birth weight with a WW ratio of 111 and Marbling ratio of 122.

61

OW NETFLIX 9157 PLD **POLLED**

Calved 2/25/19	Tattoo 9157	M923504	Act. BW	96
			Adj. 205	670
			Ratio	110
			Adj. 365	1129
			Ratio	105
			ADG	4.24

OW NETFLIX 7085 PLD

DC-OW MAXIMIZER 385 PLD

OW MISS MAXIMIZER 3503 PLD ET

EATONS LEBO 1506

BW	WW	YW	MILK	MATL	CW	REA	FAT	MARB	TSI
2.4	36	61	15	33	22	0.67	0.009	0.14	203.93
Ultrasound			Adj. REA	Ratio	Adj. %IMF	Ratio	Rib Fat		
Data			12.70	99	2.37	98	0.17		

► A bull with EPDs in the top 30% for WW and Marbling.

Reference Sire

L OW NETFLIX 7085 PLD

Calved 2/2/17 Polled M890991

WCR SIR PAUL 9803 ET P
 WCR SIR PAUL 4377 ET P
 OW NETWORK X120 PLD
 OW MISS MAXIMIZER S 092 PLD
 DA NEW DESIGN 104 P ET
 OW MISS DESIGN U505 PLD ET
 OW LITTLE LACY

{ WCR MISS SUPREME 452
 DC-OW MAXIMIZER 385 PLD
 RAR LADY FLASH 2019 PLD
 BALDRIDGE FASTTRACK 82F
 SCF MISS BONNIE MAC
 HPF MAC 7105 PLD ET
 GS LACY 2201 P ET

EPDs	BW	WW	YRL	Milk	TM	SCTL	TSI
	0.6 (.55)	30 (.42)	59 (.31)	16 (.16)	31	1.4 (.PE)	205.93

CARCASS	CWT	REA	FAT	MARB	BW	WW	YW
	25 (.16)	.61 (.17)	0.005 (.15)	.13 (.12)	84	659	1249

► A Network son out of a Design daughter.
 ► Netflix is producing offspring that have thickness and muscle shape.

62

OW NETFLIX 9231 PLD **POLLED**

Calved 3/16/19	Tattoo 9231	M923777	Act. BW	86
			Adj. 205	635
			Ratio	105
			Adj. 365	1109
			Ratio	103
			ADG	4.34

OW NETFLIX 7085 PLD

DC-OW MAXIMIZER 385 PLD

OW MISS MAXIMIZER Y96 PLD

OW MISS PAUL T153 PLD

BW	WW	YW	MILK	MATL	CW	REA	FAT	MARB	TSI
0.3	35	63	13	31	17	0.46	0.009	0.08	205.43
Ultrasound			Adj. REA	Ratio	Adj. %IMF	Ratio	Rib Fat		
Data			11.56	90	2.21	92	0.23		

► Solid set of numbers for this Netflix son out of a Maximizer daughter.

63

OW NETFLIX 9247 PLD **POLLED**

Calved 3/21/19	Tattoo 9247	M923796	Act. BW	79
			Adj. 205	699
			Ratio	115
			Adj. 365	1104
			Ratio	102
			ADG	3.57

OW NETFLIX 7085 PLD

OW DIVIDEND X97 PLD

OW MISS DIVIDEND 4089 PLD

OW MISS MAXIMIZER X5 PLD

BW	WW	YW	MILK	MATL	CW	REA	FAT	MARB	TSI
-1.4	33	58	21	37	18	0.63	0.009	0.05	203.66
Ultrasound			Adj. REA	Ratio	Adj. %IMF	Ratio	Rib Fat		
Data			12.73	99	1.81	75	0.17		

► Birth weight of 79 pounds and nearly 700 pounds of weaning weight.



Oakwater Ranch

**OW NETFLIX 9252 P/S****SCURRED**

Calved 3/22/19 Tattoo 9252 M923798

Act. BW	88
Adj. 205	605
Ratio	100
Adj. 365	1029
Ratio	95
ADG	3.83

OW NETFLIX 7085 PLD

MC-OW SANDCREEK 375

OW MISS SANDCREEK 3032 PLD

OW MISS DESIGN W51 PLD

BW	WW	YW	MILK	MATL	CW	REA	FAT	MARB	TSI
-2.1	27	50	13	27	12	0.39	0.003	0.07	196.06
Ultrasound			Adj. REA	Ratio	Adj. %IMF	Ratio	Rib Fat		
Data			10.95	85	1.92	80	0.17		

▶ Top 15% of the breed for BW EPD on this Netflix son out of a Sandcreek female.

**OW DESIGN S519-9115****DEHORND**

Calved 2/15/19 Tattoo 9115 M923444

Act. BW	97
Adj. 205	612
Ratio	101
Adj. 365	1090
Ratio	101
ADG	3.97

OW DESIGN S519

MC-OW SANDCREEK 375

OW MISS SANDCREEK Y50

OW MISS NOVIO W156 PLD

BW	WW	YW	MILK	MATL	CW	REA	FAT	MARB	TSI
1.1	31	55	16	32	10	0.48	-0.023	0.19	203.45
Ultrasound			Adj. REA	Ratio	Adj. %IMF	Ratio	Rib Fat		
Data			12.76	99	2.57	107	0.13		

▶ A moderate framed, thick made son of Design S519.

**OW NEW DESIGN 9009 PLD****POLLED**

Calved 1/5/19 Tattoo 9009 M922551

Act. BW	77
Adj. 205	619
Ratio	102
Adj. 365	1123
Ratio	104
ADG	4.25

DA NEW DESIGN 104 P ET

FF ABOUT TIM Y07

OW MISS ABOUT TIME 7033 PLD

OW MISS MAXIMIZER Y43 PLD

BW	WW	YW	MILK	MATL	CW	REA	FAT	MARB	TSI
0.2	38	67	7	26	16	0.54	-0.004	0.27	214.88
Ultrasound			Adj. REA	Ratio	Adj. %IMF	Ratio	Rib Fat		
Data			11.78	92	3.16	131	0.17		

▶ A New Design 104 son whose EPDs rank in the top 3% for Marbling, top 25% for WW and TSI and top 30% for YW.

**OW MAX FORCE 7034-9187 PLD****POLLED**

Calved 3/2/19 Tattoo 9187 M923695

Act. BW	84
Adj. 205	610
Ratio	100
Adj. 365	986
Ratio	91
ADG	3.32

OW MAX FORCE 7034 PLD

OW DIVIDEND X97 PLD

OW MISS DIVIDEND 2120 PLD

OW MS MAXIMIZER 5083 PLD

BW	WW	YW	MILK	MATL	CW	REA	FAT	MARB	TSI
-0.3	29	44	16	31	11	0.55	0.005	0.11	188.43
Ultrasound			Adj. REA	Ratio	Adj. %IMF	Ratio	Rib Fat		
Data			12.17	95	2.41	100	0.19		

▶ The only son of Max Force 7034 in the offering.

Watch your bulls during the breeding season

by Clay Wright, The Samuel Roberts Noble Foundation

Ok, you've spent \$50 on your bull's breeding soundness examination, and he's good to go. Or, maybe he's already out earning his keep in your spring calving herd. Many things can go wrong during a 60-90 day breeding season, however, so now is not the time to let him go unsupervised.

It is good management to observe him regularly to make sure he's still willing and able to do his job. I recommend watching him in action during breeding season. Obvious physical problems that may have arisen since turn-out can be detected and addressed, such as lameness or injury.

Another simple thing to do is record the number of cows and dates he services them. Then find those cows in 18 to 23 days to make sure they are not coming back in heat. That, of course, would indicate he may have become infertile and you could address it in a timely manner.

Social ranking or dominance in multi-sire herds is a key concept. Dominant bull(s) will breed more cows compared to less-dominant bulls, especially when older and younger bulls are used together. In a five-year study, the dominant bull of a four bull group sired 70.4% of the calves in the first year. The remaining three bulls, a 4-year-old, a 3-year-old and a 2-year-old, sired 16.7%, 7.4% and 5.5% of the calves, respectively. Dominance changed over time, but the dominant bull always sired the most calves.

Using bulls that are roughly the same size and age can minimize dominance. Also, because dominant bulls work harder, they lose condition quicker. Rotating these bulls out of the herd for a week or two of rest and added nutrition is one way to deal with this situation, and it gives the less-dominant bulls more chance to do their share. Another approach is to start the breeding season with older bulls and replace them with the younger bulls later.

Rotation can also be used simply to maximize the use of a bull battery made up entirely of young bulls. According to Dr. Selk at Oklahoma State University, "rotating them at a minimum of two weeks will allow for optimum reproductive performance and not allow young bulls to become too fatigued or lose condition too rapidly. If pasture and management capabilities allow, rotating young bulls once per week should slightly improve reproductive performance..."

Bulls need managed and provided for all during the year, but especially during the breeding season. It's too important to just turn them out and forget about them. Your next calf crop may be at stake.

Keep it real

In the pasture

Lower birth weight
■ MORE LIVE CALVES

Increased weaning weight
■ MORE POUNDS AT WEANING

In the feedlot

Higher yearling weight
■ MORE POUNDS, EFFICIENTLY

At harvest

Increased carcass weight
■ MORE POUNDS AT HARVEST

Larger ribeye
■ BETTER YIELD GRADES

More marbling
■ HIGHER QUALITY GRADES

Commercial cattlemen trust registered seedstock breeders to make documented genetic improvements that provide them the opportunity to succeed.

From 2004-2014, the 2015 AICA National Cattle Evaluation Genetic Trend illustrates Charolais seedstock breeders are doing their job!

The trend shows dramatic improvements in every trait of economic importance.

2004-2014 NCE Charolais Genetic Trends

	BW	WW	YW	CE	CW	REA	Marb
2004	0.8	19.1	33.7	1.6	11.4	.18	.01
2018	0.3	30.6	56.1	5.3	19.9	.69	.10

**More pounds.
More profits.
Charolais keep it real.**



AMERICAN-INTERNATIONAL CHAROLAIS ASSOCIATION

11700 NW Plaza Circle ■ Kansas City, Missouri 64153 ■ 816.464.5977

Fax: 816.464.5759 ■ www.CHAROLAISUSA.com

Notes



Thanks for Coming!

Oakwater Ranch



39735 Rocking Arrow Rd.
Valentine, NE 69201
Dean Churchill 402/376-6386



ADDRESS SERVICE REQUESTED

THE OAKWATER ADVANTAGE

OAKWATER RANCH/ROCKING ARROW

37th Annual Charolais Bull Sale

April 14, 2020

1:00 p.m. CDT

Valentine Livestock

Valentine, NE