

# OASIS

Water Management



*"Every Micro Climate needs a Micro Manager"*

## ***“Every Micro Climate Needs a Micro Manager”***

For over 25-years, Rain Master is and has been dedicated to providing state of the art water management solutions thru the use of a wide range of central control systems and communications technologies. Rain Master was first to introduce an Internet based, wireless, "Smart" ET/Weather Based irrigation controller with two way communication and "Smart Alerts™". With hundreds of installations across the US, water savings have been reported in excess of 25% using ET/Weather Based controllers. Irrigation central control systems, controllers and handheld remotes exceed irrigation industry quality and performance standards.



**OASIS** is the next generation of Central Irrigation Water Management; featuring Windows® drop down menus, **V**isual **P**ositioning, graphical presentation, and mapping. **VP** mapping tools provide an easy way to locate and program infield controllers (DX2), weather stations or other devices using "zoom" features. Highlight any DX2 controller and launch programming screens, view alerts, or use the integrated note pad.

Realizing that the true successes of any product are the people who support it, Rain Master prides itself in having the highest quality sales and technical support personnel in the irrigation industry. With over 200 years of combined irrigation and water management experience, Rain Master customers' are assured the highest level of straightforward cost effective solutions, service and support.

The **OASIS** Central Control System provides the same consistency and "backwards compatibility" with previous releases of DX2 hardware, as well as being committed to providing the latest in software and communication technologies. By offering the widest selection of options, there isn't any communication obstacle that Rain Master cannot overcome.

For more information, contact Rain Master at 800-777-1477 or [www.rainmaster.com](http://www.rainmaster.com)



# Tools To Help You

*"Intelligent Water Conservation through SMART Control"*

The **OASIS** Central Control System offers a variety of optional advanced modules that address a variety of water management solutions.

## EVAPOTRANSPIRATION (ET) WATER MANAGEMENT

- Basic and advanced (ET) capability as standard features
- Utilizes water budget scheduling method
- Provides complete water use accountability
- Irrigation schedules based on plant requirements
- Generates water usage projections
- Optimizes scheduling efficiency
- Simple graphical user interface
- Site specific map interface

## ADVANCED IRRIGATION MANAGEMENT (AIM) MODULE

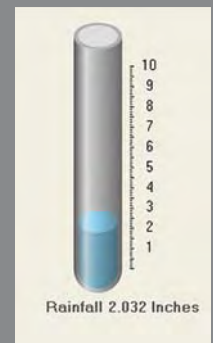
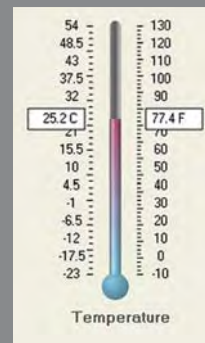
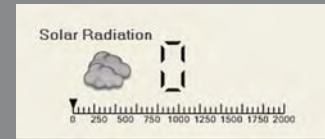
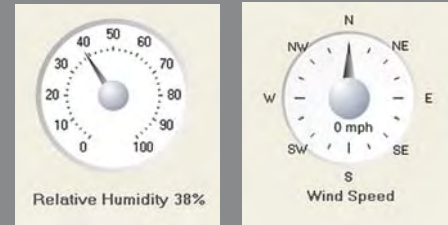
- Optional Module
- Optimizes system performance
- Daily automatic scheduling
- Extensive system flow management
- Comprehensive pump station management
- Global programming functions
- Simple graphical user interface
- Create, save and print irrigation schedules

## EVOLUTION DX2 WEATHER STATION (WSII)

- Accurately measures, wind, rain, temperature, solar radiation and relative humidity, and computes EvapoTranspiration (ET) to .01 inch
- Compatible with Evolution DX2 irrigation controllers
- Weather computer scans sensors and recalculates weather changes every second
- Solid state design promotes very low maintenance
- Non-volatile memory retains configuration and weather data across power outages
- Diagnostic port and computer LED's for troubleshooting and configuration
- Plug & play – factory programmed site specific configuration simplifies installation

# Maximize Your Water Savings...

## OASIS Features On-Screen



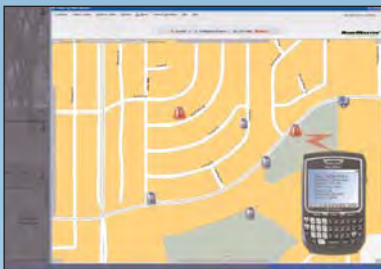
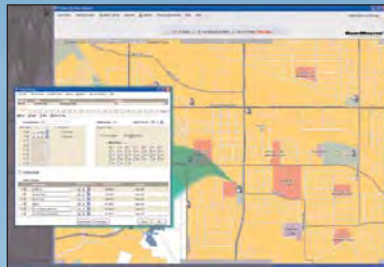
(OASIS Central only)



# Intuitive Operations

## *The simplicity and ease of use within the OASIS Water Management System*

- The main screen allows the user to easily navigate to any function with drop down menus
- Simple **VP** interactive operation allows easy access to any DX2 field irrigation controller, as if you were standing in front of the actual unit



- Alarm and fault conditions (illustrated by a red triangle) are automatically generated on the main screen to notify the operator of any condition which may require operator attention
- A single screen allows easy entry of all controller program information; start times, runtimes, water days, etc. A highly efficient "global" programming feature is also available
- Comprehensive diagnostic maintenance tools allow users to manually turn on any station while monitoring the station flow and electrical current of each station in real-time
- Numerous report permutations and graphics are available. Easily export accumulated operational data to Microsoft® Excel to maximize water management capabilities
- In addition, **OASIS** Central Control has been designed to effortlessly integrate with AutoCAD®

## OASIS Wireless Weather Station

- Accurately measures wind, rain, temperature, solar radiation, relative humidity and computes EvapoTranspiration (ET to .01 inch)
- Weather computer scans sensors and recalculates weather changes every second
- Non volatile memory retains configuration and weather data should loss of power occur
- Real-Time display and storage of weather data
- Wireless technology
- Solar powered - one full week of power without sunlight
- Plug & Play factory configured for your site
- Diagnostic port and weather computer LEDs for system troubleshooting
- Easy installation



# Comprehensive Monitoring Maintenance Features

## Evolution DX2™



### “Smart” Field Irrigation Controllers

The **Evolution DX2** field controller, whether used as a stand alone controller or in conjunction with the **OASIS** Central Control System, is the most advanced, easy to use controller on the market. Its "Automatic Intelligence" takes corrective action, should any system problem arise. Thus, the water management professional is equipped with the ultimate flexibility in "smart" irrigation central control and the water management tools for any size irrigation project.

#### Versatile Programming

- Operation of 12 conventional programs and/or individual station control
- Up to 8 start-times per program or continuous cycle mode with programmable soak time
- 14 day, 31 day, skip by day watering schedules
- Select one of two master valves, and/or a pump, on a per program basis, either normally opened or normally closed master valve control
- Multi-Lingual Interface is designed to operate in two languages
- Programmable station runtimes from 1 second to 24 hours
- Inter-station delay from 0 to 255 seconds

#### Water Rotation Tools

- Water budget from 0 to 999% in 1% increments
- Programmable water window
- Programmable monthly water usage total which terminates over-budget irrigation
- Omit by date exclusion feature
- Programmable rain off feature

#### Reliable Modular Design

- Modular short circuit proof outputs available from 6-48 stations, in 6 station increments
- Upgrade for central control at any time
- Indefinite retention of programs as well as time and date during all power failures
- Optional heavy duty lightning and surge protection available

#### Integrated Flow Monitoring

- Precise monitoring of high/low station, main-line, and unscheduled limits
- Dynamic limit adjustment for multi-station operation
- Auto learn flow function with direct GPM read-out in display
- Intelligent alarm notification, station condemnation, and program advancement

#### Integrated Electrical Current Monitoring

- Built-in electrical current meter with amperage usage displayed
- Continuous electrical monitoring of station solenoids, master valves and pumps
- Auto learn function with adjustable high and low limits
- Dynamic limit adjustment for multi-station operation
- Intelligent alarm notification, station condemnation, and program advancement

#### Intelligent Single Point of Connection Operation

- Share a single flow meter and master valve/pump across multiple controllers
- Flow limits are intelligently and dynamically updated as stations transition, providing full protection for main line, station, and unscheduled flow
- Read flow at master irrigation controller

#### Manual Diagnostic Features

- Multi-station operation with instantaneous flow/current displayed
- System station check
- Irrigation controller has built-in self test
- Diagnostic LEDs for all outputs
- Rain Master remote control ready

#### Multi-Mode Reliable Communications

- Bi-directional (two-way) communications ensure integrity
- Hardwire, UHF point to point radio, trunk radio, cellular, UHF store and forward radio, telephone, repeater operation and Ethernet

#### Field or Central Programming

- Full support for controller programming in the field or at central control computer, utilizing comparison management tools
- Two-levels of password access activated by the user, protects against unauthorized modifications

***"The Rain Master Advantage..."***  
***Our People...***  
***Our Products...***  
***Our Service...***



Find out why Rain Master is the leading provider of Central Irrigation Control Systems in the industry today. Ask your local sales representative for an **OASIS** Central Control presentation and see for yourself!

***"Visionary solutions to water management thru technology."***



3910-B Royal Avenue  
Simi Valley, CA 93063  
Voice: 805.527.4498  
Fax: 805.527.2813



[www.rainmaster.com](http://www.rainmaster.com)

