

# Océ | User manual

Océ Windows Printer Driver

---

*User manual*



# Océ-Technologies B.V.

© 2008 Océ

All rights reserved. No part of this work may be reproduced, copied, adapted, or transmitted in any form or by any means without written permission from Océ.

Océ makes no representation or warranties with respect to the contents hereof and specifically disclaims any implied warranties of merchantability or fitness for any particular purpose.

Further, Océ reserves the right to revise this publication and to make changes from time to time in the content hereof without obligation to notify any person of such revision or changes.

---

## Trademarks

Océ, Océ Windows Printer Driver are registered trademarks of Océ-Technologies B.V.

Adobe®, Acrobat®, Distiller®, Illustrator®, Photoshop® and Reader® are registered trademarks of Adobe® Systems Incorporated.

Citrix® MetaFrame™ and Presentation Server™ are registered trademarks of Citrix Systems, Inc.

Microsoft®, Windows®, Windows 2000®, Windows XP®, Windows Server 2003®, Windows® Vista™, and Microsoft Office PowerPoint® are either registered trademarks or trademarks of Microsoft® Corporation in the United States and/or other countries.

Novell™ is a registered trademark of Novell, Inc., in the United States and other countries.

Products in this publication are referred to by their general trade names. In most, if not all cases, these designations are claimed as trademarks or registered trademarks of their respective companies.



---

# Table of Contents

**Chapter 1**

<b>Introduction</b> .....	<b>9</b>
Océ Windows Printer Driver concept .....	10
What is an Océ Windows Driver? .....	10
Workflow to print using an Océ Windows Driver .....	11
Check your compatibility .....	12
Océ Windows Printer Driver 1.16 compatibility topics .....	12
Check your Océ 9x00 printer version .....	14
Check your Océ TDS printer version .....	16
Meet the configuration requirements .....	18
Configuration requirements for Windows printer drivers .....	18
Get to know the Océ Windows Printer Driver .....	19
Access the Océ Windows driver .....	19
Structure of the Océ Windows Printer Driver .....	20
Device configuration .....	22
Printing Preferences in WPD .....	23

**Chapter 2**

<b>Installation and upgrade</b> .....	<b>25</b>
Installation - Introduction .....	26
Install WPD - Before you begin .....	27
Define the correct installation method .....	28
Install Océ Windows Printer Driver using the setup method .....	29
Install WPD after a web download .....	29
Install Océ WPD from the Océ Drivers Pack CD .....	31
Install Océ Windows Printer Driver using Add a printer method .....	32
Install Océ WPD using the 'Add (a) printer' method .....	32
Configure printer information (administrator only) .....	33
Define the device settings .....	33
Connect to the printer .....	35
'Back-channel configuration' .....	36
'Advanced accounting' checkbox .....	38
'Feed definition' / 'Number of feeds' .....	39
Configure the 'External finishers' .....	40
'Folder' options .....	41
Uninstall .....	42
Uninstall the Océ Windows Printer Driver .....	42
Upgrade .....	45
Upgrade the driver .....	45

**Chapter 3**

**Océ Windows Printer Driver Settings . . . . . 47**

- Principles and preferences. . . . . 48
  - Océ Ticket / 'Printer default' . . . . . 48
  - Set the 'User Preferences'. . . . . 49
  - 'Templates' . . . . . 51
  - 'Advanced accounting'. . . . . 53
- Retrieved information . . . . . 55
  - Retrieve the 'Printer information'. . . . . 55
- Select the page and media features . . . . . 56
  - Page orientation . . . . . 57
  - Page size. . . . . 59
  - 'Page size list filter' . . . . . 61
  - Saving custom sizes . . . . . 62
  - 'Media source' and 'Media type' . . . . . 63
- Get the correct image rendering . . . . . 65
  - Define the colors . . . . . 65
  - 'Color feel' (Océ TCS500, Océ TCS300 and Océ ColorWave 600 systems) . . . . . 67
  - Adjust quality according to print content . . . . . 68
  - Dithering Matrix (only on the print controller) . . . . . 71
- Define the layout / transformation settings. . . . . 72
  - 'Scale' . . . . . 72
  - 'Image size correction'. . . . . 73
  - 'Printable area'. . . . . 74
  - 'Rotation' . . . . . 75
  - 'Mirror' . . . . . 77
  - 'Alignment' . . . . . 78
  - 'Shift' . . . . . 79
- Cut the output. . . . . 80
  - Select the cut size method . . . . . 80
  - 'Strips' . . . . . 81
- Set the final options . . . . . 82
  - Collate . . . . . 82
  - 'To inbox' / 'To waiting jobs'. . . . . 83
  - 'Stamping' . . . . . 84
  - Stamping (for Océ 9700 and Océ 9800 printers) . . . . . 87
  - Select the output destination. . . . . 88
  - Define the folding settings. . . . . 91
  - Advanced folding options . . . . . 93

**Chapter 4**

**How to. . . . . 95**

- Change the location of the spool directory . . . . . 96
- How to optimize the print performance for landscape drawings . . . . . 98

---

Print using an Océ Windows Printer Driver within AutoCAD . . . . .	100
How to print landscape long drawings on Océ 9x00 printers. . . . .	102
Set optimal printer configuration for Océ 9x00 printers . . . . .	103
<b>Chapter 5</b>	
<b>Troubleshooting . . . . .</b>	<b>105</b>
Solve installation problems . . . . .	106
Installation problems - Introduction . . . . .	106
Back-channel restriction due to a firewall presence . . . . .	107
Advanced accounting problems . . . . .	108
Why is the folder not available? . . . . .	109
Get optimizations for AutoCAD-based applications (AutoCAD 2000i and higher) . . . . .	110
Get AutoCAD optimizations under Windows Vista . . . . .	112
Improve output quality . . . . .	113
Achieve optimal output quality . . . . .	113
Vectors printing on the Océ TDS400 . . . . .	113
Image quality according to an Océ TDS printer version. . . . .	114
Get a correct layout or rotation of the drawing on an Océ TDS/TCS printer . . . . .	115
Large-format printing . . . . .	116
Cut synchro . . . . .	117
Set the 'Processing on the computer' (raster only) mode . . . . .	118
Manage the number of copies. . . . .	119
Manage the number of copies under Windows 2000/XP . . . . .	119
Manage the number of copies with AutoCAD . . . . .	120
Manage clipping . . . . .	121
Define the settings to manage clipping . . . . .	121
Overcome limitations in applications . . . . .	122
Océ Windows Drivers and AutoCAD 2000 . . . . .	122
Printing problems with VectorWorks . . . . .	123
Long outputs in Microsoft PowerPoint. . . . .	124

---





# Chapter 1

## Introduction

*We recommend that you visit our web site (<http://www.oce.com> - International Corporate Website) regularly and consult the 'Drivers, Downloads and Support' section in order to download the most up-to-date version of the driver.*



# Océ Windows Printer Driver concept

## What is an Océ Windows Driver?

### Definition

The Océ Windows drivers can be used from any Windows application to print to your Océ printer. They translate the data into graphics languages and enable your printer to generate monochrome and color outputs.

### Océ Windows Printer Driver

The Océ Windows Printer Driver (WPD) translates the data into HP-GL/2 (graphics language designed by Hewlett-Packard). It includes the Océ Ticket (specific Océ Job Ticket or RCF (Remote Control Format) header), a set of information sent to the printer on how, when and where to print the job.

---

## Workflow to print using an Océ Windows Driver

### Purpose

This procedure describes the recommended steps to follow to print using an Océ Windows Driver.

### Before you begin

Make sure that you previously installed the driver and defined the default 'Device settings'.



**Note:** Check that the printer units are the same in the application and in the driver *Units on page 49*.

### How to print a drawing

1. Create the document in your application.
2. Select **File - Page Setup** or **File - Print Setup** to:
  - Select your printer.
  - Define the document format for the selected printer by defining the 'Page size'. In the 'Page size' list you can select a standard 'Page size', or select a 'Custom size' previously registered (see '*Page size*' on page 59).

3. Display the application preview if the function is available.



**Note:** *The preview only takes into account the settings available in the application. It does not display the driver transformation settings ('Mirror', 'Rotation', 'Alignment', 'Shift'...).*


4. Select **File - Print** to:
  - send directly the document for printing.
  - open 'Properties' to access the printer settings.  
Then you can modify the driver settings, attach a user identification to the output using the accounting option, define the number of copies, set the layout and image quality before printing.

# Check your compatibility

## Océ Windows Printer Driver 1.16 compatibility topics

### Operating System compatibility

Océ Windows Printer Driver 1.16 is compatible with the following operating systems and environments:

<ul style="list-style-type: none"><li>■ Windows Vista (32-bit, 64-bit)</li><li>■ Windows XP (32-bit, 64-bit)</li><li>■ Windows XP (32-bit, 64-bit)</li><li>■ Windows Terminal Server</li><li>■ Windows 2000</li></ul>	<ul style="list-style-type: none"><li>■ Novell (NDPS-iPrint)</li><li>■ Citrix Metaframe 3.x and Presentation Server 4.x</li></ul> <p> <b>Note:</b> <i>The 'Home' editions are not supported.</i></p>
---	---

### Printer compatibility

Océ Windows Printer Driver 1.16 is compatible with the following Océ printers:

- Océ ColorWave 600
- Océ TCS500
- Océ TCS400
- Océ TCS300
- Océ TDS860
- Océ TDS800 1.3.3 and higher
- Océ TDS700
- Océ TDS600 3.2.3 and higher
- Océ TDS450
- Océ TDS400 1.4.3 and higher
- Océ TDS320
- Océ TDS300
- Océ 9800 (EPC1.6.1 and higher, MTX1.6.1 and higher)
- Océ 9700 (EPC1.6.1 and higher, MTX1.6.1 and higher)
- Océ 9400-II (LVI\_1.2.3 and higher, EPC-M2\_1.03 and higher)
- Océ 9300 (LVI\_1.2.3 and higher, EPC-M2\_1.03 and higher)



**Note:** *To retrieve your Océ 9x00 or Océ TDS printer version, see [Check your Océ 9x00 printer version on page 14](#) or [Check your Océ TDS printer version on page 16](#).*

## Application compatibility

Océ Windows drivers are designed to be compatible with all the Windows applications.



**Note:** *Specific optimizations for AutoCAD-based applications are available in the Océ WPD driver [Get optimizations for AutoCAD-based applications \(AutoCAD 2000i and higher\)](#) on page 110.*

## 'Advanced accounting'

This option is only compatible with:

- Océ ColorWave 600
- Océ TCS500 1.0 and higher
- Océ TCS400 2.2 and higher
- Océ TCS300 1.0 and higher
- Océ TDS860 1.x and higher
- Océ TDS800 2.1 and higher
- Océ TDS700 1.x and higher
- Océ TDS600 4.1 and higher
- Océ TDS450 1.x and higher
- Océ TDS400 2.1 and higher

## Check your Océ 9x00 printer version

### Introduction

To make sure that you are installing the Windows driver compliant with your Océ 9x00 printer version, you can check your printer controller version number.

### When to do

Check your printer version before the installation or the update of your Windows driver.

### Check your Océ 9700 / 9800 controller firmware version

1. From your Océ 9700/9800 printer control panel, press 'Machine',
2. Select 'Print Settings' and validate,
3. Three pages with controller settings are printed. Check the Controller firmware version number, indicated in the first line of the first page.

### Result

If the controller firmware version number is higher than 1.6.1, install and use the Océ WPD driver.

If the controller firmware version number is prior to 1.6, contact your Océ representative.

### Check your Océ 9300 / 9400-II controller firmware version

1. From your Océ 9300/9400-II printer control panel, press 'Program' to enter the main menu,
2. Select 'Configuration',
3. Select 'Utilities',
4. Select 'Dump config',
5. Three pages with controller settings are printed. Check the Controller firmware version number indicated in the first line of the first page,
6. Press 'Program' to leave the main menu.



**Note:** *The dump configuration cannot be performed while a file is being processed.*

### Result

If the controller firmware number is higher than LVI\_1.2.3 or EPC-M2\_1.0.3, install and use the Océ WPD driver.

If the controller firmware number is prior to LVI\_1.2.2 or EPC-M2\_1.0.2, contact your Océ representative.

## Check your Océ TDS printer version

### Introduction

To make sure that you are installing the Windows driver compliant with your Océ TDS400, Océ TDS600 or Océ TDS800 printer version, you can check your printer controller version number.



**Note:** Use Océ WPD with all versions of Océ TDS860, Océ TDS450 and Océ TDS3x0 systems.

### When to do

Check your printer version before the installation or the update of your Windows driver.

### Check your Océ TDS version

1. From your Océ TDS Controller, access the Océ System Control Panel.
2. From the System menu, select 'Print settings'. It launches the Dump-config print.
3. On the printout, on the 'Control-parameters (22-1)' section, check the 'Release number controller'.

### Result

According to the 'Release number controller', find out your Océ TDS version and the driver to install in the tables below:



[2] Océ TDSx00 printers versions

<b>If</b>	<b>Then</b>
The 'Release number controller' is below 6.1	your Océ TDS400 version is 1.4.1 or below. your Océ TDS600 version is 3.2 or below. your Océ TDS800 version is 1.3 or below. <b>Contact your Océ representative.</b>
The 'Release number controller' is 6.1.x or higher	your Océ TDS400 version is 1.4.3 or higher. your Océ TDS600 version is 3.2.3 or higher. your Océ TDS800 version is 1.3.3 or higher. <b>You can install and use the Océ WPD driver.</b>

# Meet the configuration requirements

## Configuration requirements for Windows printer drivers

### Processor

See the Microsoft minimum requirements for your Windows operating systems.

### Disk space

- 30 MB for the complete installation of several instances of WPD for the wide format printers.
- Windows can require several GB for the spooler while printing. Settle the spooler on a non-system disk with several GB of free space ([Change the location of the spool directory on page 96](#)).

### RAM

See the Microsoft minimum requirements for your Windows operating system.

### Advanced accounting

- Internet Explorer 6.0 or higher.



**Note:** *You may have to check the 'Bypass proxy server for local addresses' in the Internet Options (LAN settings).*

# Get to know the Océ Windows Printer Driver

## Access the Océ Windows driver

### Introduction

You can access the Océ Windows driver:

- from your application.
- from your desktop.

### Access from the application

1. Open your application.
2. Open a document.
3. Select **File - Print** or **File - Page Setup** .
4. Choose the printer.
5. Click 'Properties'.

### Access from your desktop

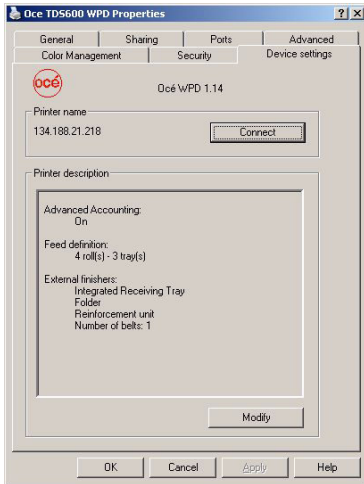
1. Select:
  - **Start - Settings - Printers** (Windows 2000)
  - **Start - Settings - Printers and Faxes** (Windows XP/Server 2003)
  - **Control Panel - Hardware and Sound - Printer** (Windows Vista)
2. Right-click on the printer.
3. Select 'Printing Preferences...!'.

# Structure of the Océ Windows Printer Driver

## Introduction

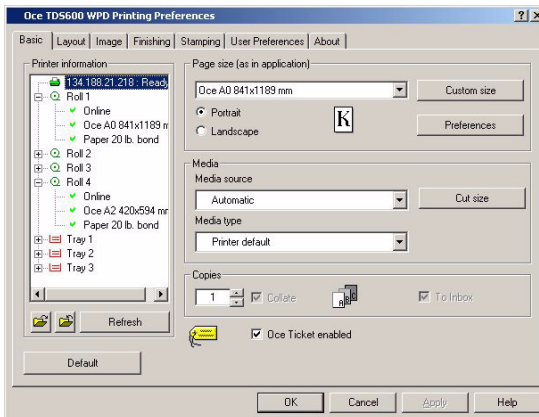
The Océ Windows Printer Driver can be divided into two parts:

- the Device Settings



[1] Device settings

- the Printing preferences



[2] Printing preferences

### Device settings

- to be defined to complete the installation with the printer configuration.
- only accessible in Power User/Administrator mode.
- can be accessed from **Start - Settings - Printers** or **Start - Settings - Printers and Faxes**, by right-clicking on the printer and selecting 'Properties'.

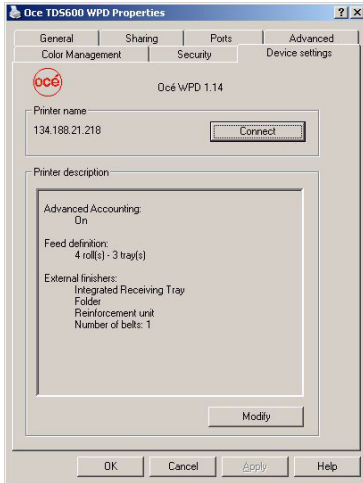
### Printing preferences

- to be defined per document.
- accessible either to all users (from the application) or in Power user mode (from the desktop).

For more details, refer to the Access section ([see 'Access the Océ Windows driver' on page 19](#)).

# Device configuration

## Illustration



[3] device settings

## Device settings

This page allows to see and modify your printer configuration:

- 'Printer name' (host-name of the printer)
- 'Advanced accounting' activation
- 'Number of feeds'
- 'External finishers'

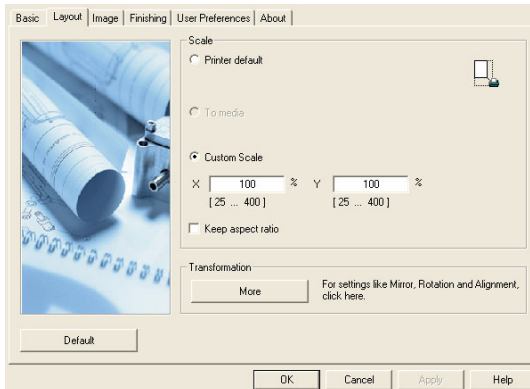
---

# Printing Preferences in WPD

## Introduction

There are 5 to 7 tabs available, according to the printer model selected.

## Illustration



[4] Printing preferences

## 'Basic' tab

This page allows you to define general settings such as:

- 'Page size (as in application)'
- 'Media source' and 'Media type'
- Number of copies
- 'Cut size'
- 'Custom size'
- 'Printer information'
- 'Preferences'

## 'Layout' tab

This page allows you to select layout settings such as:

- Scaling
- Mirroring
- 'Rotation'
- 'Alignment'
- 'Shift'

### 'Image' tab

This page allows you to define image settings such as:

- 'Color'
- 'Color settings'
- 'Color feel'
- 'Print-file resolution'
- 'Print contains'/'Print optimization'
- 'Quality'
- 'Data Processing'

### 'Finishing' tab

This page allows you to define the finishing options (only for printers including finishing options).

### 'Stamping' tab

This page allows you to define the 'Stamping' settings (according to your rights) such as:

- 'Stamp selection'
- 'Stamp definition'
- 'Stamp position'
- 'Stamp text'

### 'User Preferences' tab

This page allows you to define settings such as:

- 'Units'
- 'Language'
- 'Back-channel configuration'
- 'Templates'
- 'Accounting'

### 'About' tab

This page gives information about the driver version. This can be useful information to give to your Helpdesk service technician in case of troubleshooting.



# **Chapter 2**

## **Installation and upgrade**



## Installation - Introduction

### Introduction

The installation of the WPD driver requires installation files that you can get either from the Drivers Pack CD or from the 'Support and Downloads' section of the International Corporate Website.

### Definition

The method used to install the driver depends on:

- Your network architecture.
- Where you got the installation files.

### Attributes

This chapter guides you through the installation of the WPD software on a workstation. Once you have successfully installed the driver, see the configuration chapter for a full explanation of how to use the options and dialog boxes.



**Note:** *To get the installation process on a Print server, on Terminal Server, on Citrix MetaFrame server or on Presentation Server, consult the Connectivity Manual delivered on a CD with your printer.*

---

## Install WPD - Before you begin



**Note:** *For performance reasons, we recommend you to use the LPR Port instead of the default Standard TCP/IP Port.*

*Contact your local network administrator and consult the Connectivity Manual delivered on a CD with your printer.*

### Enable the LPR port

For Windows 2000/XP/Server 2003 platforms:

- Select 'Add or Remove Programs - Add/Remove Windows Components - Other Network File and Print Services'.
- Install, if needed, the Print Services for Unix and enable this component.

For Windows Vista platforms:

- Select 'Programs and Features - Turn Windows features on or off - Print Services'.
- Enable the LPR Port Monitor.

### Océ TDS version and Windows driver compatibility

To make sure that you have selected the driver according to your printer version, follow the correct procedure (see '[Check your Océ TDS printer version](#)' on page 16). Then check in the compatibility table which is the correct driver to install (see '[Océ Windows Printer Driver 1.16 compatibility topics](#)' on page 12).

### Caution concerning the printer names

If you are installing the Océ WPD driver on a Windows 2000/XP/Server 2003/Vista platform:

- The printer name may include up to a maximum of 220 characters.
- Do not use special characters ('!', ',', '/').

## Define the correct installation method

### Definition

According to your network architecture, you can use different methods to install the Océ Windows Printer Driver on a **user workstation**. Océ recommends you use:

- the 'Add (a) printer' method in a Client/Server configuration
- the 'Setup' method when the workstation is directly connected to the printer (peer to peer).



**Note:** *Contact your local network administrator to know your network configuration and to get information about the printer to address.*

### Client /Server configuration: use the 'Add (a) printer' method

In a Client/Server configuration, you connect the workstation to the print server. Océ recommends to:

- Use the 'Add Printer Wizard' (see [Install Océ WPD using the 'Add \(a\) printer' method on page 32](#)) to install a 'Network printer'. As the wizard installs elements coming from the print server, make sure that the latest version of the driver is installed on the print server (contact your local system administrator).
- If you need to uninstall the printer, 'Delete' it (see [Manual uninstall after a standard Windows 'Add Printer Wizard' installation on page 43](#)).

### Peer to peer configuration: use the 'Setup' method

When the workstation is directly connected to the printer (through a network for example), Océ recommends to:

- Use the 'Setup' method, from the Océ Drivers Pack CD (see ['Install Océ WPD from the Océ Drivers Pack CD' on page 31](#)), or from the setup.exe file downloaded from the web (see ['Install WPD after a web download' on page 29](#)).
- If you need to uninstall the printer, remove it using the 'Add/Remove Programs' (see [Automatic uninstall after a setup.exe installation on page 42](#)).

---

# Install Océ Windows Printer Driver using the setup method

## Install WPD after a web download

### Before you begin

Before installing Océ WPD for an Océ TDS printer, check your TDS version (see [‘Check your Océ TDS printer version’ on page 16](#)) and the compatibility table (see [‘Océ Windows Printer Driver 1.16 compatibility topics’ on page 12](#)).



**Note:** *You need the System Administrator rights on your computer to install the driver under a Windows 2000/XP/Server 2003 or Vista platform.*

### Get the installation files

1. Go to the International Corporate Website, select your country.
2. From the 'Support and Downloads' section, go to 'Downloads'.
3. Select 'Printer drivers'.
4. Select the driver to install and click 'Go'.
5. Follow the download and retrieval instructions.
6. Once the zipped.exe file is downloaded on your local directory, double-click on it and unzip the content (by default in: **C:\WPD**).
7. Log on as the system administrator of your computer, and go to the directory where you extracted the installation files.

### Install the Océ WPD driver



**Attention:** Always install the driver with the same method on a same workstation. Use either the 'Setup' method or the 'Add (a) printer' method. If not, we cannot guarantee the driver's correct behavior.

- 
1. Launch the installation (double-click on setup.exe).
  2. Choose the setup language and click 'OK' to launch the installation wizard.
  3. Click 'Next'.
  4. Read the license agreement and click 'Yes'.
  5. The setup searches for previous versions of the driver already installed:
    - If a driver is already installed from a print server (Client/Server configuration) the installation cannot be performed. The process is stopped.
-

- If a former version of the driver is installed, you can upgrade the driver and existing printers [Upgrade the driver on page 45](#), and install a new one.
- If no version is detected, follow the procedure to install a new printer.

6. Enter the controller hostname or IP address in order to connect to the print system and click 'Next'. The back-channel process is launched to reach the printer controller and retrieve the printer model and the printer information.



**Note:** *To install the driver for an Océ TDS300 or an Océ 9x00 system, select the model from the list. Choose the option 'Select the model from the list' and enter the output port associated with your printer (contact your Local System Administrator to get it).*



**Note:** *When you select the printer model from the list, there is no back-channel performed during the installation.*

7. When detected, the printer model is displayed. Define the appropriate port and click 'Next'.
8. Type a name for the new printer (see [Caution concerning the printer names on page 27](#)).
9. Indicate whether you want to use the printer as the default one and whether you want to print a test page, and click 'Next'.
10. The driver installation and configuration are performed. Once the driver is installed, click 'Finish'.

The 'Device settings' window is displayed, so you can modify and lock the 'Printer options'(see ['Define the device settings' on page 33](#)).

## Result

Open:

- **Start - Settings - Printers** (Windows 2000)
  - **Start - Settings - Printers and Faxes** (Windows XP/Server 2003)
  - **Control Panel - Hardware and Sound - Printer** (Windows Vista)
- to check for the presence of your new printer in the list.

## Install Océ WPD from the Océ Drivers Pack CD

### Before you begin

Before installing Océ WPD for an Océ TDS printer, check your TDS version (see [‘Check your Océ TDS printer version’ on page 16](#)) and the compatibility table (see [‘Océ Windows Printer Driver 1.16 compatibility topics’ on page 12](#)).



**Attention:** Always install the driver with the same method on a same workstation. Use either the 'Setup' method or the 'Add (a) printer' method. If not, we cannot guarantee the driver's correct behavior.

---

### Install Océ WPD from the CD

1. Log on as the System Administrator of your computer.
2. Insert the Océ Driver CD-ROM in the CD drive.  
The installation menu appears.
3. Click on 'Install Products' and select your printer.
4. Choose 'Windows Printer Driver'.
5. Click 'Install'.
6. Follow the installation procedure (see [Install the Océ WPD driver on page 29](#)).

### Result

Open:

- **Start - Settings - Printers** (Windows 2000)
  - **Start - Settings - Printers and Faxes** (Windows XP/Server 2003)
  - **Control Panel - Hardware and Sound - Printer** (Windows Vista)
- to check for the presence of your new printer in the list.

# Install Océ Windows Printer Driver using Add a printer method

## Install Océ WPD using the 'Add (a) printer' method

### Introduction

If you are in a Client/Server network configuration, Océ recommends to install the Océ WPD driver on the user workstation using the 'Add (a) printer' method. In this case, the version of the driver installed on the workstation is the same as the one on the print server.



**Attention:** Always install the driver with the same method on a same workstation. Use either the 'Setup' method or the 'Add (a) printer' method. If not, we cannot guarantee the driver's correct behavior.

---



**Note:** *The 'Add Printer Wizard' is slightly different from one Windows Operating System version to another, but the global procedure remains the same. The procedure below describes an installation via the 'Add Printer Wizard' under Windows XP.*

### Install Océ WPD using the 'Add Printer Wizard'

1. Open the **Start - Settings - Printers and Faxes** window.
2. Double-click 'Add (a) printer' to launch the installation wizard.
3. Click 'Next'.
4. Choose to set up a 'Network printer' and click 'Next'.
5. Select 'Connect to this printer...' and either:
  - enter the name of the printer, provided by your local network administrator.
  - or click 'Next' to browse for the print server and select the printer queue.
6. Click 'Next'.
7. Indicate whether you want to use the printer as the default one and click 'Next'.
8. Click Finish.

### Result

Open:

- **Start - Settings - Printers** (Windows 2000)
  - **Start - Settings - Printers and Faxes** (Windows XP/Server 2003)
  - **Control Panel - Hardware and Sound - Printer** (Windows Vista)
- to check for the presence of your new printer in the list.
-



---

# Configure printer information (administrator only)

## Define the device settings

### Introduction

The 'Device settings' are available when you right-click on the printer and select 'Properties'.

The 'Device settings' window also appears once you finish a driver installation. You can then connect to the printer in order to configure its settings.

### Definition

As an administrator, these settings allow you to retrieve and define information about a given printer.

### 'Printer name'

This feature allows you to connect to a given printer (see '[Connect to the printer](#)' on [page 35](#)) and retrieve information about it ('Rolls', 'Media type', 'Page size'). 'Number of feeds', 'External finishers' and 'Advanced accounting' are also retrieved but can be modified manually.



**Note:** *Once a correct 'Printer name' is entered, the automatic update of the 'Printer information' in the 'Basic' page is performed, by default, every time a user opens the 'Printing Preferences...'*.

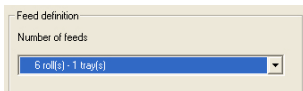
### 'Printer Description'

The 'Printer Description' window displays the settings defined for a printer:

- 'Printer model' (defined during the installation)
- 'Advanced accounting'(see *'Advanced accounting' checkbox* on page 38)
- 'Feed definition'(see *'Feed definition' / 'Number of feeds'* on page 39)
- 'External finishers'(see *'Configure the 'External finishers'* on page 40)

Click 'Modify' to change these 'Printer options' or to define the 'Back-channel configuration'(see *'Back-channel configuration'* on page 36).

### Illustration



[5] Number of feeds

---

# Connect to the printer

## Purpose

This procedure allows the administrator to retrieve and define the printer configuration ('Back-channel configuration', 'Printer options', 'External finishers', 'Advanced accounting').

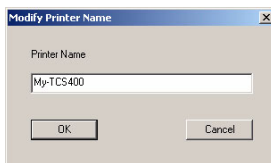


**Note:** *As long as you do not enter a printer name, the 'Back-channel configuration' remains unavailable.*

## Before you begin

Access to the printers list and open the 'Properties' window of your printer.

## Illustration



## Configure printer information

1. From the 'Device settings' tab, select 'Connect'
2. Enter the printer name (host-name or IP address of your printer).
3. Click 'OK'. The name of your printer is displayed.



**Note:** *If you cannot connect the printer, you will be warned with an error message. You are then able to use the driver but not to retrieve nor refresh any printer information in the 'Basic' page (such as 'Rolls', 'Trays', 'Media type', printer status, etc.).*

## Result

If allowed in the 'Back-channel configuration', the connection is performed every time the driver is opened.

Upon successful connection, the printer and media statuses will be refreshed and displayed in the driver interface ('Basic' page).

## 'Back-channel configuration'

### Introduction

The back-channel function allows the driver to gather information from the print controller in order to display it in the driver.

An automatic back-channel is performed when the 'Windows Printer Driver' is connected to a printer.

Once connected, the print system information ('Advanced accounting', 'Feed definition', 'External finishers') is automatically collected from the controller and displayed in the 'Device settings' window ('Printer Description').

If the default 'Back-channel configuration' is kept (automatic update allowed), the same retrieved information is displayed in the driver when opened by a user (in the 'Basic'/'Printer information' and 'Finishing' sections).



**Note:** *The 'Printer name' must be defined in the 'Device settings' tab (administrators only) and the back-channel function must be enabled in order to make the 'Printer information' available.*

### Printer compatibility

The back-channel function is available for all the :

- Océ TCS systems
- Océ TDS systems (except Océ TDS3x0 models).
- Océ ColorWave 600 printers

### 'Back-channel configuration' in the 'Device settings' (administrator only)

By default the back-channel is allowed in both administrator and user sides. If needed, the administrator can disable the back-channel for the users, from the 'Device settings' window. Nothing is then displayed in the 'Printer information' ('Basic' tab), and the settings defined in the 'Printer options' are locked and propagated to the users.

### Modify the 'Printer options'

An icon representing a printer is displayed in front of the option when the information is retrieved from the controller (via back-channel).

The administrator can uncheck a retrieved option or select another one.

Then, if he locks the modified 'Printer options', these ones are propagated to the users and replace the retrieved information.

### **'Refresh' the 'Printer information' ('Basic' tab)**

The user can click the 'Refresh' button to reload and display the printer status and the printer media status and availability.

The 'Refresh' function is available:

- for all printers supporting back-channel.
- when the back-channel connection has been performed and achieved.
- when the automatic back-channel is enabled (not disabled in the 'Device settings' or in the 'User Preferences').

### **'Back-channel configuration' in the 'User Preferences'**

If allowed by the administrator, a user can disable the back-channel function in the 'User Preferences'.

Then, the 'Printer information' ('Basic' tab) is no longer available.

## 'Advanced accounting' checkbox

### Definition

The 'Advanced accounting' option is available from the 'Device settings' page when Océ Account Logic is active on the print controller. The accounting information is retrieved from the controller, via the back-channel.



**Note:** *This setting is not available for the Océ TDS3x0 and Océ 9x00 printers.*



**Note:** *For the Océ ColorWave 600 systems, the accounting is automatically enabled: no 'Advanced accounting' checkbox displays.*

### Status

If 'Advanced accounting' is checked, it indicates that Océ Account Logic is active on the print controller. The user must fill in the advanced accounting fields to be able to print.

If the 'Advanced accounting' checkbox is grayed and unavailable, that means either:

- Océ Account Logic is not installed on the print controller, or
- the controller version does not enable the activation of the 'Advanced accounting' option.

The administrator can enable or disable the 'Advanced accounting' option from the 'Printer options' window, by clicking 'Modify'.

If the administrator disables the 'Advanced accounting' (and locks the 'Printer options') whereas it is required by the printer controller, all the print files sent by the users are sent 'To inbox' ((see '[To inbox](#)' / '[To waiting jobs](#)' on page 83)).

## 'Feed definition' / 'Number of feeds'

### Definition

This setting is available from the 'Device settings' page.

### 'Feed definition'

This setting is used to indicate the number of rolls/trays available on the printer. This information is automatically retrieved (via the back-channel) and displayed when you click on 'Connect' (from the 'Printer name' section).

To change the accessible number of feeds, click on 'Modify', select the 'Number of feeds' you want to set for the printer, and click OK.

## Configure the 'External finishers'

### Definition

In the 'Printer options' section of the 'Device settings' page, you can activate and configure the 'External finishers' installed for your printer.



**Note:** *The availability of the finishers and their options depends on your printer capabilities.*

To activate a finisher (available for the printer), click 'Modify' and select the finisher amongst the following possibilities:

- 'Copy Delivery Tray'(see '[Copy Delivery Tray](#)' on page 88)
- 'External Output'[External Output](#)' on page 89
- 'Integrated Receiving Tray'(see '[Integrated Receiving Tray](#)' on page 88)
- 'Lower Output Tray'(see '[Lower Output Tray](#)' on page 89)
- 'Top Delivery Tray'[Top Delivery Tray](#)' on page 89
- 'Two-tray stacker'(see '[Two-tray stacker](#)' on page 89)
- 'Folder' ('Reinforcement unit', number of 'Belts'...) (see '[Folder](#)' on page 90)

Click 'OK'. The declared finisher can then be selected in the 'Finishing' tab of the driver.



## 'Folder' options

### Definition

When the administrator selects a folder in the 'Printer options' window, he may activate the associated folder options:



**Note:** *For the Océ TCS400, TCS500 and Océ ColorWave 600 printers, the 'Folder' options are not available in the 'Device settings' page. Please configure the 'Folder' options directly on the folder device. For more information, refer to the printer documentation.*

### 'Reinforcement unit'

Check this option if the reinforcement unit is available on your printer.

### 'Belts'

You can select the number of belts available on your printer (1 or 2 for Océ TDS8x0, Océ 9700 and Océ 9800, 1 for Océ TDS600 and Océ TDS700).

### 'Punching unit'

Check this option if the punching unit is available on your printer.

# Uninstall

## Uninstall the Océ Windows Printer Driver

### Introduction

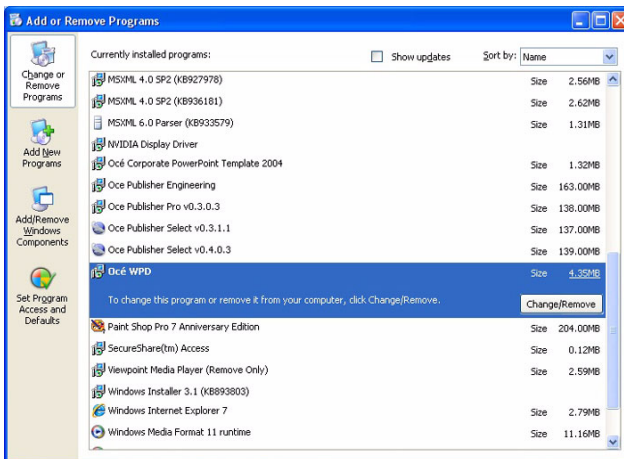
Select and follow the uninstallation procedure corresponding to the method you applied for the installation.

### Before you begin

- Make sure the printer is not in use.
- Close all Windows applications.
- If you are in a Client/Server configuration, start uninstalling first the driver on the Clients and then on the Server.

### Automatic uninstall after a setup.exe installation

1. Log on as the System Administrator of your computer.
2. Open **Start - Settings - Control Panel**.
3. Select the 'Add/Remove Programs' utility.  
Under Windows Vista, select **Programs - Programs and Features**.
4. Select one instance of 'Océ WPD'



5. Click 'Add/Remove' or 'Change/Remove'.  
Under Windows Vista, select 'Uninstall/Change'.
6. Click 'Next'.
7. Select the printer to uninstall.
8. Click 'Next'.
9. Click 'Finish'.



**Note:** *If you have installed several printers with WPD, you must repeat the process until all 'Océ WPD' instances have been removed from the list.*

10. Restart Windows if requested.



**Note:** *The setup may have to restart the explorer and/or the spooler during the upgrade, in order to avoid rebooting the computer. If it happens, take care of the warning message or you may lose the ongoing print jobs.*

### Manual uninstall after a standard Windows 'Add Printer Wizard' installation

1. Access the Océ Windows Printer Driver list ('Printers and Faxes' window).
2. Right-click on the printer and select 'Delete'.



**Note:** *The System Administrator can now remove the printer driver from the list of the network shared printers (see [Remove the printer driver from the Print Server Properties](#)).*

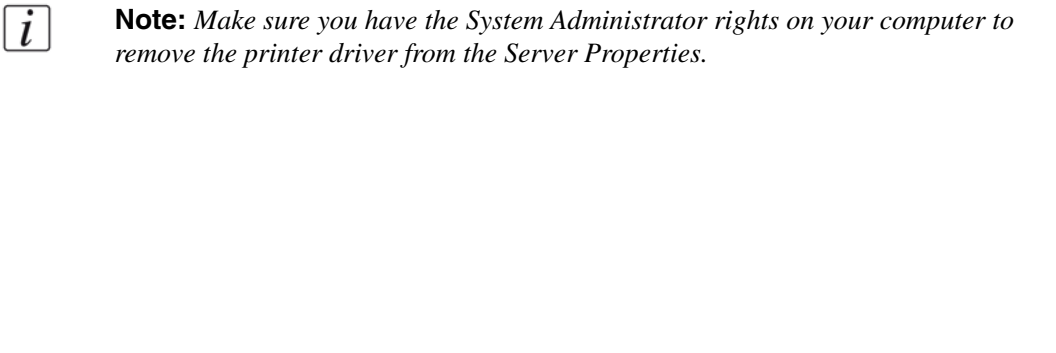
### Manual uninstall after a 'Point and Print' installation from a network shared printer



**Note:** *Make sure that WPD is not associated with the default printer (if possible). Make sure that no document is present in the print queue.*

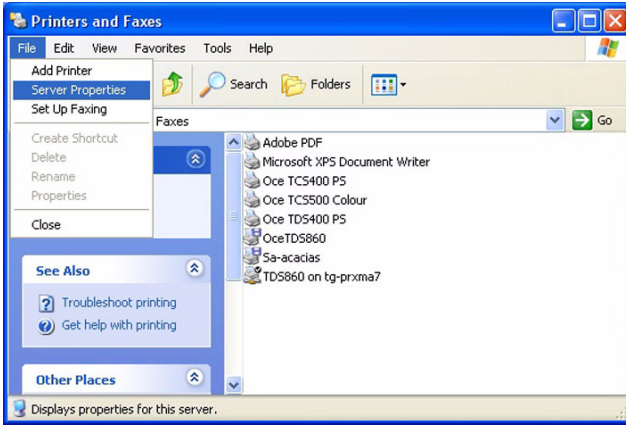
1. Access the Océ Windows Printer Driver list ('Printers and Faxes' window).
2. Right-click on the printer and select 'Delete'.
3. Remove the printer driver from the list of the network shared printers (see [Remove the printer driver from the Print Server Properties](#)).

### Remove the printer driver from the Print Server Properties

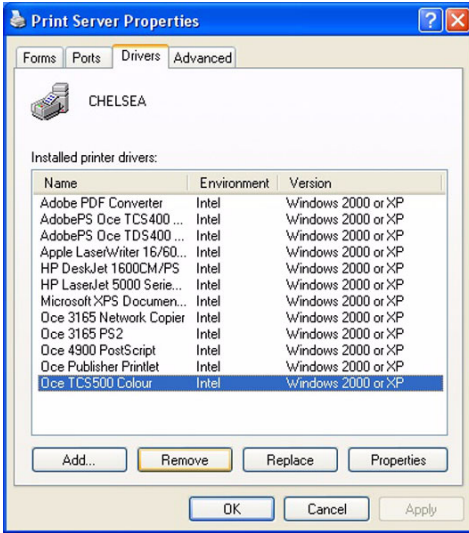
1. From **Start - Settings - Printers and Faxes**, select **File - Server Properties**. Under Windows Vista, if you did not enable the Menu Bar, right-click in the 'Printers and Faxes' window in order to select the 'Server Properties...'.  




**Note:** *Make sure you have the System Administrator rights on your computer to remove the printer driver from the Server Properties.*



2. Go to the 'Drivers' tab.
3. Select the Océ Windows Driver you want to delete.



4. Click 'Remove'.



**Note:** Remove also the additional driver (if present).  
If you do so under Windows Vista, click 'Delete' to validate each step.

5. It is recommended to reboot the workstation, particularly if a new driver installation is to be done.

---

# Upgrade

## Upgrade the driver

### Upgrade all printers using the Océ Windows Printer Driver

1. Launch the installation (double-click on setup.exe).
2. Read the license agreement and click 'Yes'.
3. The list of all printers using the Océ Windows Printer Driver installed on your computer is displayed.
4. Select 'Upgrade printers using Océ Windows Printer Driver'.
5. Click 'Finish'.



**Note:** *The setup may have to restart the explorer and/or the spooler during the upgrade, in order to avoid rebooting the computer. If it happens, take care of the warning message or you may lose the ongoing print jobs.*

### Install a new printer and upgrade printers using Océ Windows Printer Driver

1. Launch the installation (double-click on setup.exe).
2. Read the license agreement and click 'Yes'.
3. The list of all printers using the Océ Windows Printer Driver installed on your computer is displayed.
4. Select 'Install a new printer and upgrade printers using Océ Windows Printer Driver'.
5. Type a name for the new printer (see [Caution concerning the printer names on page 27](#)).
6. Indicate whether you want to use the printer as the default one and whether you want to print a test page, and click 'Next'.
7. Since you are installing the driver on a workstation, do not share the printer and do not activate the support for an additional driver. Click 'Next'.
8. The driver installation and configuration are performed. Once the driver is installed, click 'Finish'.

If needed, you can modify and lock the 'Printer options' displayed in the 'Device settings' window (see [‘Define the device settings’ on page 33](#)).

## Result

The new printer is installed and all printers are upgraded.



# **Chapter 3**

## **Océ Windows Printer Driver Settings**



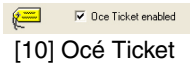
# Principles and preferences

## Océ Ticket / 'Printer default'

### Definition

The Océ Ticket and 'Printer default' concepts are deeply involved in the way files are sent to the printer and printed out.

### Illustration



### Océ Ticket

The Océ Ticket is a set of information sent to the printer on how, when and where to print the job, it gives access to the advanced printers features.

### Printer settings

Some options described in this manual may be not available on every Océ printing system series.

For instance, the 'Accounting', 'Media type', 'Collate', 'Shift' options are not available on the Océ 9300 printers.

### 'Printer default'

When you select 'Printer default' for a print option ('Media type', 'Rotation', 'Alignment'... for example), no information about this option is sent to the printer. The value currently set for this option on the print system controller is applied.



---

# Set the 'User Preferences'

## Introduction

This page allows you to set user settings such as:

## Units

This setting is available from the 'User Preferences' page.

It allows you to change, whenever needed, the units used in the driver interface ('Custom size', 'Shift...').



**Note:** *When you switch from one unit to another, all settings expressed in 'millimeter'/'inch' are reset to their default values (except the 'Custom size').*

## Language definition

Use this box to select the language used in the driver.



**Note:** *By default, the language is the one used during the installation. In case of an upgrade, it is the same as the one used in the previous version. You can change it at any moment.*

## 'Back-channel configuration' in the 'User Preferences'

If allowed by the administrator, a user can disable the back-channel function in the 'User Preferences'.

Then, the 'Printer information' ('Basic' tab) is no longer available.

## Templates

From the 'Templates' window, you are able to:

- save a template
- delete a template
- apply a template
- import or export a template.

To create and use the templates, follow the procedures described next ([see "Templates" on page 51](#)).



**Note:** *All the settings defined in the 'Basic', 'Layout', 'Image' and 'Finishing' tabs can be stored in templates.*

### 'Accounting'

Use this section to enter accounting information that will be sent with every print. According to your printing system options and configuration, the accounting method can be either basic or advanced.

If the basic 'Accounting' option is installed, the accounting information is limited to a User Name, a 'User ID', and an 'Account ID'.

The default user name is your login and cannot be modified.

- 'User ID':

Enter the 'User ID'. The text area allows up to 256 characters.

The 'User ID' is automatically filled in from the previous job. You can change it if required.

- 'Account ID':

Enter the 'Account ID'. The text area allows up to 256 characters.

The 'Account ID' is automatically filled in from the previous job. You can change it if required.

If Account Logic is activated on the print controller and if the 'Advanced accounting' option is checked in the 'Device settings' page, you can use the 'Advanced accounting' settings (see '[Advanced accounting](#)' on page 53).

---

# 'Templates'

## Introduction

The templates are available when clicking the 'Templates' button in the 'User Preferences' page.

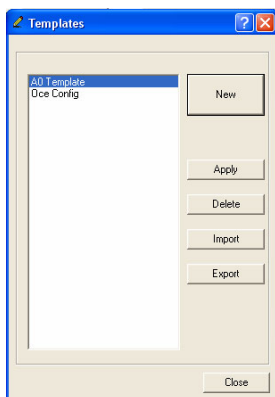
## Purpose

This feature allows you to save and store the driver settings in different templates in order to be reused or shared.

All the parameters available in the driver are stored in the templates, except:

- the 'Custom size' (in the 'Page size' list).
- the accounting information.

## Illustration



[11] 'Templates'

## Create a template

1. Define the settings.
2. Click the 'Templates' button in the 'User Preferences' page.
3. Click the 'New' button.
4. Name the template and click 'OK'.

## Apply templates

1. Click the 'Templates' button in the 'User Preferences' page.
2. Select the template from the list.
3. Click 'Apply'. The settings predefined for the selected template are enabled.



**Note:** *You can also import or export 'Templates' from this window to enable configuration sharing between users or when you install a new version of the driver after uninstalling the previous one.*

### Import / Export templates

1. Click the 'Templates' button in the 'User Preferences' page.
2. Click the 'Import' or 'Export' button.
3. Browse to locate the file to import/export.
4. Click 'Open' to import or 'Save' to export.



**Note:** *When you import a template not compatible with the current printer (i.e.: a template created in an Océ TDS600 with finishing capability exported to an Océ TCS400 without finishing), a warning is displayed to confirm the import. If you confirm, the driver will do its best to solve the possible conflicts.*



**Note:** *Custom sizes are not saved in the templates.*

### Delete a template

1. Click the 'Templates' button in the 'User Preferences' page.
2. Select the template.
3. Click 'Delete'.

## 'Advanced accounting'

### Introduction

This window is available by clicking the 'Accounting' button on the 'User Preferences' page.

It is only displayed if Account Logic is activated on the print controller and if the 'Advanced accounting' option is checked in the 'Device settings' page.



**Note:** *This replaces the basic accounting window.*

### Accounting fields

Displays in a tree classification the accounting fields. You can expand/collapse the list. There are three categories:

- mandatory fields: a red icon is displayed next to the field.
- optional fields: a green icon is displayed next to the field.



**Note:** *When a field value is not defined, the icon is a question mark. As soon as the value is defined, the icon is a check mark.*



**Note:** *The Account Logic administrator can define a field with the information 'Clear field after submission'. In this case, the user must define the field value at print time only. The value for this field cannot be saved in the printer driver. For more information, refer to the Account Logic documentation.*

### Values

Displays the values for the selected accounting field.

Depending on the accounting field, you can select a value among a given list or you can type directly the value.

Click Apply to validate the entered values.

### 'Accounting status'

Displays the status of the accounting information.

- Green light: all mandatory fields are defined.
- Red light: some of the mandatory fields are not defined. You can recognize them easily by the red question mark icon next to the field.

## 'Advanced accounting'

---



**Note:** *You can close the advanced accounting window even with red light but you will not be able to print.*

When you print, if the light is red, the advanced accounting window reopens automatically to let you fill in the missing mandatory fields.

## 'Accounting storage'

Optional.

Displays the path where you store the accounting information. Optimizes performances for the use of advanced accounting.

Click 'Browse' to modify the path.

## 'Refresh'

Click this button to retrieve updated accounting information from the print controller.

## 'Apply'

Click this button to save the entered values, one by one.

# Retrieved information

## Retrieve the 'Printer information'

### Introduction

This section gathers the printer information retrieved from the print system or defined by the administrator.



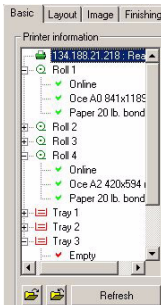
**Note:** *The printer information is not available if the security level of the Security Pack is set to 'High' on the printer controller.*

### Definition

The 'Printer name' must be defined in the 'Device settings' tab (by administrators only) and the back-channel function must be enabled (see [“Back-channel configuration” on page 36](#)) in order to collect the 'Printer information'.

The 'Printer information' displays the information retrieved from the print system -and locked by the administrator in the 'Device settings' page (see [‘Define the device settings’ on page 33](#)).

### Illustration



### 'Refresh'

Use this button to retrieve or refresh the printer information ('roll', trays, 'Media type', loaded media, printer status Ready/Off-line/Error). This information is displayed on the left. You can use the two icons next to the 'Refresh' button to expand or collapse the details of printer information.

## Select the page and media features



**Note:** *In the Océ WPD driver, it is important to notice the difference between 'Page' and 'Media'.*

*'Page' is the page as you see it in your application whereas 'Media' is the material on which the page is printed.*



## Page orientation

### Definition

This feature is used to select the page orientation. It defines the orientation of the data generation within the page.

### Page orientation

- 'Portrait' (default)
- 'Landscape'

### Define the page orientation


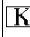




To avoid clipping, the page orientation in the driver must be the same as the one defined in application. If orientation in the driver is changed, only the page orientation will change. No graphic objects will be rotated.



**Note:** *To avoid clipping, some applications (e.g. Microsoft Word) ignore the orientation defined in the printer driver and always force application-defined orientation. The document in this application can contain pages with different orientations. All pages will be printed with correct orientation due to the specific behavior of the application.*

### 'Short edge first' impact on the page orientation

The icon displayed on the 'Page size (as in application)' section reflects the exact graphical data orientation in the page (combination of the page orientation and 'Short edge first' option when manually set or automatically applied; see ['Short edge first' on page 75](#)).

Orientation	'Short edge first'	Icon
Portrait	-	 [13] Portrait
Landscape	No	 [14] Landscape
	Yes	 [15] 270°
	Yes + 'ERICSSON' folding	 [16] 90°
	Yes + 'Add extra 180° to the short edge first'	 [17] 90°
	Yes + 'ERICSSON' folding + 'Add extra 180° to the short edge first'	 [18] 270°



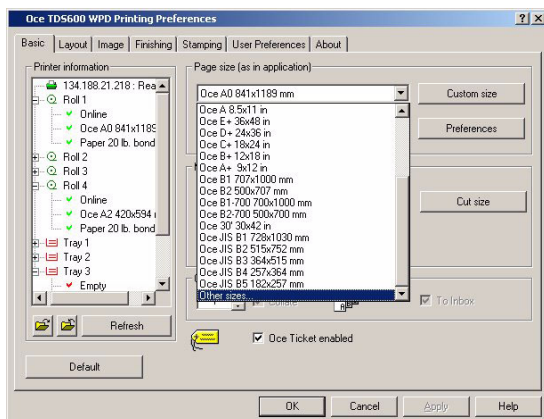
**Note:** Find the description of the 'Short edge first' and 'Add extra 180° to the short edge first' options in the 'Rotation' section (see ['Rotation' on page 75](#)).

# Page size

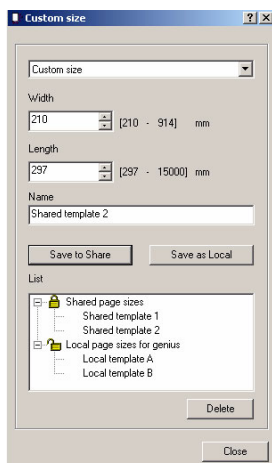
## Introduction

You can select a standard page format for your print file, or define a custom one.

## Illustration



[19] Page size



[20] Custom size

### Page size

This feature is used to select the format of your page (as in application) among the list of predefined sizes (in the 'Page size' list).

- 'Other sizes...'

When you select this option, the 'Preferences' window is displayed where you can select the types of page sizes to display in 'Page size (as in application)'.

### Custom size

According to your profile, you can create, save and modify a custom size in order to share it or to use it locally only. Once saved, custom sizes are stored in the 'Page size' list so they may be reused.

Follow the procedures below (see '[Saving custom sizes](#)' on page 62) to define and share custom sizes.



**Note:** *After you create and save a new custom size in the WPD driver optimized for AutoCAD, the custom page size is displayed in the AutoCAD 'Paper size' list, both in 'Portrait' ('Portrait') and 'Landscape' ('Landscape') orientations (except if the width exceeds the printer threshold: in this case, only the 'Portrait' orientation is available).*

# 'Page size list filter'

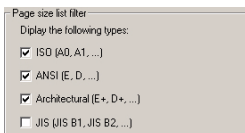
## Introduction

This feature is available by clicking the 'Preferences' button in the 'Basic' page.

## Definition

From this list, you can select the types of page sizes you want to be displayed in the 'Page size (as in application)' list of the 'Basic' tab.

## Illustration



[21] Page size list filter

- ISO
- ANSI
- ARCH
- JIS



**Note:** *JIS is available for Océ TCS/TDS and Océ ColorWave 600 systems only.*

## Saving custom sizes

### Introduction

According to your profile, you can save a custom size in order to share it (in the case of a shared driver on a print server for instance) or to use it locally only.



**Note:** *Custom sizes are always saved in 'Portrait' orientation ('Width' inferior to 'Length'). To use them in 'Landscape' orientation, check the 'Landscape' option in the 'Basic' page.*



**Note:** *You need specific rights to be able to share a custom size (for instance, administrator or power-user profile). The 'Save to share' button is available only if you are logged on with a proper profile.*

### 'Save to share'

1. Logged on a station with the proper profile (administrator, power-user...), click 'Save to share' to save the custom size defined.

This custom size is visible for every user logged on this station.

In case of a shared driver on a print server for instance, all shared custom sizes are shared with all the connected clients.

2. The new defined custom size is displayed as a shared page size in the 'Custom size' list (only its creator can modify or delete it) and in the connected users 'Custom size' list (locked).



**Note:** *A custom size can be saved even if the driver is not shared yet. It will be shared as soon as the driver is shared.*

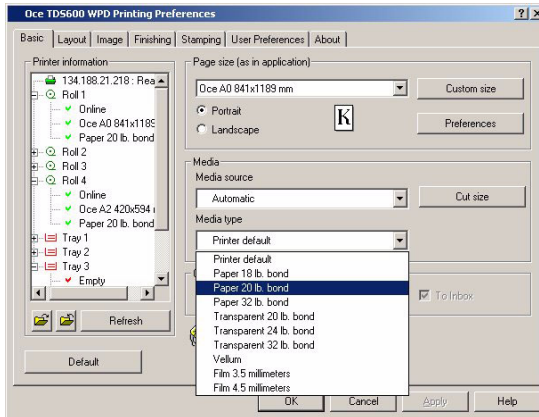
### 'Save as local'

1. Logged on with an administrator or a user profile, click 'Save as local' to save the name and size values you entered, for a personal and local use only.
2. The new defined custom size is displayed as a local page size in the 'Custom size' list. It is attached to this user profile, to this printer, to this workstation only. To change or delete it, you must be logged on with the same user profile.

# 'Media source' and 'Media type'

## Introduction

You can access these lists from the 'Basic' page.



[22] Media type

## Definition

The Media section is available from the Basic page. Use this section to select your media source and type.

In the Océ WPD driver, it is important to notice the difference between 'Page' and 'Media'.

'Page' is the page as you see it in your application whereas 'Media' is the material on which the page is printed.

## 'Media source'

According to your printer model, select to print your file on either:

- 'Automatic': to enable automatic selection of the correct media source according to the size of the output.
- A printer's specific roll or tray (e.g.: 'Roll 1').
- 'Manual feed': to use cut sheets.
- A roll of a particular size (e.g.: A0 'roll').



**Note:** The 'Media type' is not available if the 'Media source' is set to one of the printer's specific roll or tray.

## 'Media type'

Use this list to select your media type.



**Note:** When you select a specific 'roll'/tray', 'Media type' is not selectable because the available media on the selected 'roll'/tray' is used. You can view on the left side of the 'Basic' page which 'Media type' is available on which 'Media source' (e.g: Paper 20 lb. bond on 'Roll 1').



**Note:** The Océ ColorWave 600 printer proposes the 'Use any media type' setting. If you select it, the media type used is the one that best fits with your document size.



**Note:** According to the media type selected, some output destinations are not available.



---

# Get the correct image rendering

## Define the colors

### Definition

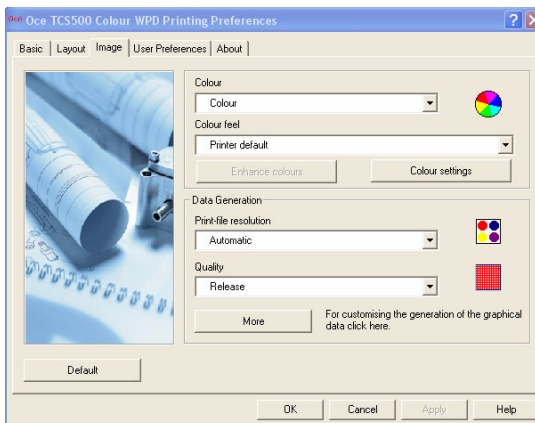
The color modes and settings are available from the 'Image' tab.

### Color

This feature allows to select a color mode to generate the data:

- 'Color'
- Monochrome ('Grayscale')
- 'True black and white vector': this is a monochrome mode, where all non-white vectors are printed in black. This mode must be used if the document contains pale-shade vectors. Indeed, when handled in grayscale, pale colors are not correctly visible on white paper.

### Illustration



[23] Color

### Color settings

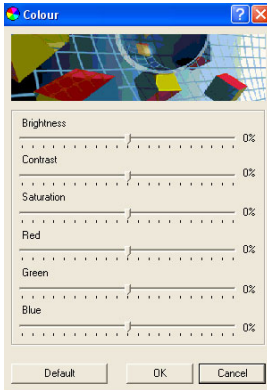
This feature allows to define brightness and contrast for the image. For color printers, the color mode also enables to set saturation, red, green and blue values.

## Define the colors

---

	Color	Grayscale	Vector true B&W
<b>Brightness</b>	selectable	selectable	not applicable
<b>Contrast</b>	selectable	selectable	not applicable
<b>Saturation</b>	selectable	not applicable	not applicable
<b>Red, Green, Blue</b>	selectable	not applicable	not applicable

## Illustration



[24] Color settings

## 'Color feel'

Improve the color rendering of your output with the 'Color feel' definition (see [‘Color feel’ \(Océ TCS500, Océ TCS300 and Océ ColorWave 600 systems\)](#) on page 67).

According to your printer model, you can apply advanced color settings, use predefined combinations of color settings, or simulate other printers.

## 'Color feel' (Océ TCS500, Océ TCS300 and Océ ColorWave 600 systems)

### Introduction

The 'Color feel' settings are available for the Océ TCS500 v1.2 and higher, the Océ TCS300 v1.0 and higher and the Océ ColorWave 600.

It allows you to improve the color rendering of the output, according to the content of your printing file.

These color management settings can be defined on the Océ Settings Editor or the Océ Express WebTools in order to be applied to every print files ('Printer default'). If you set them in the printer driver, they overrule the settings defined on the controller.



**Note:** *The 'Color feel' settings are available only when the Color mode is set to 'Color'.*



**Note:** *For the Océ TCS printers, find a detailed description of the Océ color management in the Océ TCS Settings Editor documentation provided with the printer.*

*For the Océ ColorWave 600 printers, find a detailed description of the Océ color management in the Océ ColorWave 600 Express WebTools documentation provided with the printer.*

### 'Color feel' settings

The 'Color feel' settings allow you to improve the color rendering of the output, according to the content of your printing file.

You can select:

- the 'Color feel' basic settings, to select predefined combinations of settings
- the 'Enhanced colors', that are color advanced settings, to define the 'Enhanced colors: rendering intent' and the 'Enhanced colors: RGB input data' (only if you select the 'Océ enhanced colors')
- the 'Color settings', to define one by one all the color settings ([Color settings on page 65](#))

---

## Adjust quality according to print content

### Definition

You can adjust the output quality according to the print content. This adjustment can be done by defining several values (according to the printer options):

- resolution
- print quality
- print optimization
- poster mode
- data processing

### Print-file resolution

This feature allows you to assign a print-file resolution among several possible values according to the printer model:

	Océ TCSx00/ Océ ColorWave 600	Océ TDS700/ Océ TDS3x0/ Océ TDS4x0	Océ TDS600/ Océ TDS8x0	Océ 9300	Océ 9700/ Océ 9800
<b>200 dpi</b>	No	No	No	No	Yes
<b>300 dpi</b>	Yes	Yes	Yes	Yes	No
<b>400 dpi</b>	No	No	Yes	No	Yes
<b>600 dpi</b>	Yes	Yes	No	No	No
<b>Automatic</b>	Yes (Default value)	No	No	No	No

### 'Print contains' (Océ TCS400 only)

This setting is available from the Océ WPD driver and also from the print controller (Océ Settings Editor). It allows you to select the most appropriate setting to get the best print quality according to the type of output. Three values are available:

- 'Text':  
Print process optimized for detailed information, such as sharp lines and text. Intended for prints to be viewed from nearby.
- 'Area fill':  
Recommended for plots with large area fills and graphic arts applications.

- 'Printer default':  
Settings set by default on the printer are applied.

### 'Print optimization' (Océ TDS)

This setting is available from the Océ WPD driver and also from the print controller (Océ Settings Editor). It allows you to select the most appropriate setting to get the best print quality according to the type of output. Four values are available:

- 'Standard':  
No special optimization.
- 'Poster':  
Recommended for large plots and graphic arts applications.
- 'Lines/Text':  
Print process optimized for detailed information, such as sharp lines and text.
- 'Printer default':  
Settings set by default on the printer are applied.

### 'Print quality'



**Note:** *According to printers, the names of the 'Print quality' modes can differ.*

Quality is only available for color printers. You can select among four quality modes:

- 'Check' / 'Economy': this mode is optimized for fast prints. This is the lowest quality level used to check the overall look and feel of the output.
- 'Release' / 'Production': this mode is optimized for both text and gray areas.
- 'Presentation': this mode is optimized for high-resolution printing.
- 'Printer default': this mode uses the default value set on the printer (controller).

### Océ Print Assistant (Océ ColorWave 600 only)

The Océ ColorWave 600 printer driver proposes the 'Océ Print Assistant' as a print quality mode.

The 'Océ Print Assistant' selects the best print setting for each document, based on the graphical content (for a detailed information, see the Océ Express WebTools documentation).

### 'Poster mode' (Océ 9300)

Set the 'Poster mode' to 'On' to improve the darkness of large areas of black (recommended for large outputs and graphic arts applications).

If you select the 'Off' value, the printer applies no special optimization.

## 'Data Processing'

Click on 'More' to define the 'Data Processing' settings. This feature allows you to select the type of data generated. Two choices are available:

- 'Best Performance (recommended)' (HP-GL/2 data): Recommended. All rasterization process is done in the printer (output file size rather small). This is the most optimal process.
- 'Processing on the computer' (pure HP RTL data): Rasterization process is done on the PC (bigger output file size). This process is recommended if you experience difficulties in getting the correct output.

## Dithering Matrix (only on the print controller)

### Impact of 'Dithering Matrix' on the image quality

For the Océ TDS400 (before v1.4), Océ TDS600 (before v3.2) and Océ TDS800 (before v1.3) only, 'Dithering Matrix' is taken into account along with Print mode settings in order to optimize the print quality of the output. It has a strong visual impact on vectors with light colors. Two values can be selected, either 'Cloud' or 'Clustered'.

On the new versions of the Océ TDS controller, the 'Dithering Matrix' is no longer available as a separate setting but is now embedded in the 'Print optimization' values.

This explains why you can get different visual results when you print the same job with the same driver settings, but using the former or the new version of the controller.

# Define the layout / transformation settings

## 'Scale'

### Introduction

'Scale' is accessible from the 'Layout' page.

### Definition

Use this setting to scale your document.

### 'Printer default'

Scaling value by default applied on the printer (controller).

### 'To media'



**Note:** For Océ ColorWave 600 systems, 'To media' is only available from the 1.1 version of the printer controller.

Used to scale the document to fit a required format as specified in the 'Media source' on the 'Basic' page.

If 'Media source' is set to A0, the document will be scaled to A0.



**Note:** Scale to Media is not available when 'Media source' is set to 'Automatic' or 'Manual feed' because scaling derives from the format of document as indicated in the 'Media source'. So, if the 'Media source' is set to 'Automatic' or 'Manual feed', there is no specified format values. The document is therefore scaled to its own size, 01:01 AM, which means in fact that there is no scaling applied.

### Custom Scale

Allows you to enter your own scaling values as a percentage.

You can keep aspect ratio, i.e. X scale is equal to Y scale. In this case, if you check the 'Keep aspect ratio' box, you can only enter the X value and the Y value is modified accordingly.

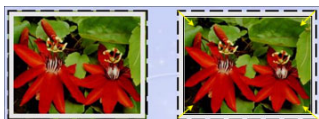


## 'Image size correction'

### Definition

Checking this option means that the page size includes margins.

### Illustration



[25] Image size correction

### Attributes

As a printer sets physical device margins, a standard size image (A0, A1...) cannot be entirely printed on an equivalent media size. In order to prevent clipping, the 'Image size correction' option indicates the physical margins size to the application, so the application can decide to scale down or crop the image.



**Note:** *If you disable this option, the image is printed in the required size (without scaling), but be aware that it may be clipped or printed on a larger media size.*

## 'Printable area'

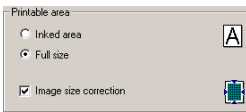
### Introduction

From this section, you can select the printable area.



**Note:** *When a stamp is applied to a document, the 'Printable area' is automatically set to 'Full size'. The 'Printable area' values appear in gray: you cannot change them. If you have sufficient rights, choose either to print the 'Inked area' or to apply a stamp.*

### Illustration



### 'Inked area'

Check this option if you want to print only the area where you defined graphical objects.

This option allows you to save paper since blank spaces around the document are not printed.

### 'Full size'

Check this option if you want to print the complete document as shown in the application.

This option allows you to keep the formatting of the document when printing, as in the application. Blank spaces around the document are respected.

## 'Rotation'

### Introduction

'Rotation' is accessible from the 'Layout' page, by clicking the 'More' button.

### Definition

Use this list to select the rotation value to apply to your document.

### 'Printer default'

Rotation value applied on the printer (controller).

### 0°/90°/180°/270°

Rotates the document counter clockwise in the selected value.

### 'Media saving'

Data orientation can be automatically modified according to the drawing surface, for a minimum use of paper.



**Note:** For Océ ColorWave 600 systems, 'Media saving' is only available from the 1.1 version of the printer controller.

### 'Productive' (for Black & White printers only)

Optimizes the productivity. Data orientation can be automatically modified to ensure the fastest printout delivery.

### 'Short edge first'

Rotates the graphical objects in order to obtain the short edge of the page printed first. Use this setting to rotate 270° counterclockwise all landscape pages (Exception: if an 'ERICSSON' fold is requested, the data is rotated 90° counterclockwise). When this setting is selected, all landscape pages are rotated. If you need to reverse the orientation of the graphical data on the printout (e.g. when folding on Océ TCS printers), check the 'Add extra 180° to the short edge first' option on the 'Data Generation' window (available from the 'Image' tab / 'More' button).



**Note:** *The icon displayed on the 'Basic' page integrates the effects of the 'Short edge first' (automatic or not) on the data orientation (see (see 'Page orientation' on page 57)).*

## Automatic



**Note:** *The Automatic 'Short edge first' is not available for the Océ 9x00 printers.*

In order to avoid clipping and optimize performance, the driver can perform an automatic 'Short edge first' rotation, in the following context:

- the landscape drawing is wider than 36 inches (or 42 inches for the Océ ColorWave 600 printer), and
- the rotation is set to 'Printer default' or 'Media saving' or 'Productive'.

When performed, the graphical data is rotated: 270° angle, except when folding is set to 'ERICSSON' (90°) or when 'Add extra 180° to the short edge first' is selected.

This automatic behavior is disabled when a rotation is set ('0°/'90°/'180°/'270°). In case of a multipage document, each page is analyzed by the driver. The rotation is performed only when needed.



**Note:** *Since it is impossible to set a landscape format wider than the printer width threshold in WPD optimized for AutoCAD, the automatic 'Short edge first' functionality is not applicable when using WPD with AutoCAD.*

---

# 'Mirror'

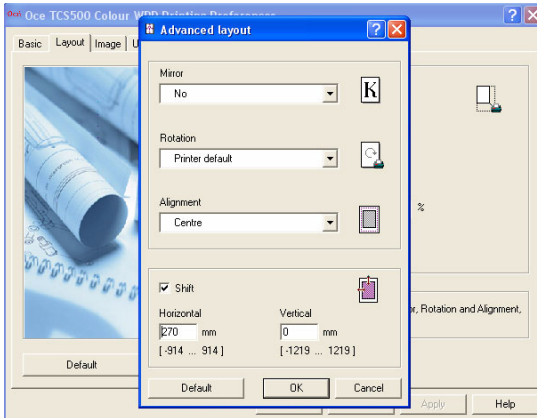
## Introduction

'Mirror' is accessible from the 'Layout' page, by clicking the 'More' button.

## Definition

Use this setting to mirror the output, using one of the three available values.

## Illustration



[27] Transformation window

## 'No'

The output is not mirrored and remains in its original state.

## 'Horizontal'

Allows the output to be mirrored with respect to the paper feed axis.

## 'Printer default'

Applies the value set on the printer (controller).

## 'Alignment'

### Introduction

'Alignment' is accessible from the 'Layout' page, by clicking the 'More' button.

### Definition

Use this list to select the position of the printed document on your media.

### Attributes

This setting depends on the 'Cut size' method you selected.



**Note:** *The 'Top', 'Bottom' and 'Center' alignment values are not relevant if the 'Cut size' is 'Synchro'. Indeed, with the 'Synchro' cut method, the output is cut just after the last line of your document.*

# 'Shift'

## Introduction

'Shift' is accessible from the 'Layout' page, by clicking the 'More' button.

## Definition

Use this setting to shift the position of the image on the page. 'Shift' is applied once the alignment is done.

Two shifts are available:

## 'Horizontal'

If you need to modify the position of a drawing in the paper, you can shift the image horizontally. Enter the value in the field:

- Negative value moves the image to the left,
- Positive value moves the image to the right.

The printout size will not change.

## 'Vertical'

If you need to modify the position of a drawing in the paper, you can shift the image vertically. Enter the value in the field:

- Negative value moves the image to the top,
- Positive value moves the image to the bottom.

The printout size will not change.

# Cut the output

## Select the cut size method

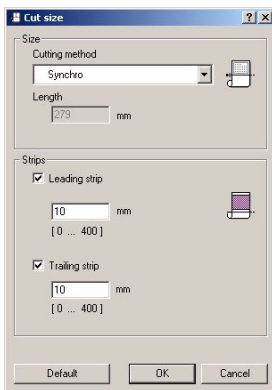
### Introduction

This feature is available when clicking the 'Cut size' button in the 'Basic' page.

### Definition

Indicates how the device will cut the paper after printing. This setting is available only if the print is made on a 'roll'. Therefore, it is not accessible when media source is 'Tray' or 'Manual feed'.

### Illustration



[28] Cut size

### Methods

- 'Standard': Print is cut according to the media source selected in the 'Basic' page.
- 'Synchro': Print is cut according to the size of the image. There is a minimum cut length which varies according to the printer model.
- 'Custom': Allows you to define your own cut size by entering the 'Length' value required.
- 'Printer default': Print is cut according to the default cut setting applied on the printer (controller).



## 'Strips'

### Definition

Use this setting to make corrections on the length of the print. The adjustment of the 'Leading strip' and 'Trailing strip' changes the output format.

### 'Leading strip'

You can adjust the length of the output by adding a strip at the top of the printout (from 0 mm to 400 mm).

The 'Leading strip' is declared in the units selected in the 'Preferences' window (see [Units on page 49](#)).



**Note:** *This is done after the scale or rotation transformation.*

### 'Trailing strip'

You can adjust the length of the output by adding a strip at the bottom of the printout (from 0 mm to 400 mm).

The 'Trailing strip' is declared in the units selected in the 'Preferences' window (see [Units on page 49](#)).



**Note:** *This is done after the scale or rotation transformation.*

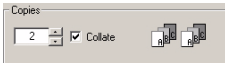
# Set the final options

## Collate

### Definition

Use this option to collate the multiple copies of your job. This setting is selectable only if the number of copies is greater than 1.

### Illustration

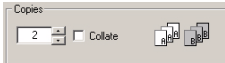


[29] Collate - checked

### Checked

Copies are sorted by set: 1234, 1234, 1234, 1234.

### Illustration



[30] Collate - unchecked

### Unchecked

Copies are sorted by page: 1111, 2222, 3333, 4444.

## 'To inbox' / 'To waiting jobs'

### Definition

The 'To inbox' option is available from the 'Basic' page. Check it to send the print file to an inbox instead of directly to a printer.

Unchecked by default, the option availability and behavior depend on the setting defined on the print controller (see the **Jobs management / Print jobs** setting in the **System** menu of the 'Océ Settings Editor').



**Note:** *This option is not available for the Océ TDS3x0, Océ TCS300, Océ 9x00 and Océ ColorWave 600 printers.*



**Note:** *'To inbox' and 'To waiting jobs' are the same option. Naming depends on the printer.*

### Checked

When you enable this option, the job is not printed automatically but sent to the printer's inbox. You can print the job later on, by selecting it directly from the printer's inbox.

# 'Stamping'

## Introduction

According to your rights, you can define, compose and apply a stamp to your printout, inside or outside the border of the document, when printing to your Océ TDS or TCS printer.

Open the 'Stamping' page to set:

- the 'Stamp selection' (administrator and user if allowed).
- the 'Stamp definition' (administrator only).



**Note:** *The 'Stamping' page not available for the Océ 9x00 printers (see [Stamping \(for Océ 9700 and Océ 9800 printers\)](#) on page 87).*



**Note:** *The Océ ColorWave 600 printers do not support this functionality.*



**Note:** *Windows Vista users, whatever their profile, must define the stamp before opening any application.*

## 'Stamping' features

- You can apply only 1 stamp to a document.
- The same stamp is applied to all pages of a printout (not only to the first page).
- 'Stamp selection' and 'Stamp definition' settings are stored in the templates.
- A stamp is never scaled.
- The 'Stamp position' is determined relatively to the graphical data (e.g. 'Top left - inside border'). If the document is rotated (e.g. 'Rotation' set to '90°'), the stamp follows the rotation to stay on top of the graphical data (except in case of a 'Short edge first' rotation, automatic or not).



**Note:** *The icon displays the result of the 'Stamp selection' and the 'Stamp definition', to illustrate whether a stamp is active or not and where it will be positioned.*



**Note:** *When a stamp is applied to a document, the 'Printable area' is automatically set to 'Full size'. The 'Printable area' values appear in gray: you cannot change them. If you have sufficient rights, choose either to print the 'Inked area' or to apply a stamp.*

## 'Stamp definition'

Only an administrator can set the stamp settings and the stamping strategy. Once defined, the stamping is propagated to the clients (in case of sharing) or to the users.

**Stamping strategy:** A stamp can be 'Optional' or 'Mandatory for all users'.  
When the administrator sets:

- 'No stamp': 'Stamp selection' is locked to 'None'. All the fields are grayed and the icon displays the 'No stamp' symbol. The 'Stamping' page becomes unavailable for the users.
- 'Mandatory for all users': 'Stamp selection' is locked to 'On all pages'. The stamp defined by the administrator will be applied on all pages submitted through the driver. The users can see the stamp settings but cannot change them.
- 'Optional': the administrator allows the users to decide whether they apply the stamp or not. The users can see the stamp settings but cannot change them.

**'Stamp position':** The administrator selects the stamp position, on top or at the bottom of the page, inside or outside the image border ('outside the border' option puts the stamp in the margin).

The stamp position is illustrated by the icon.



**Note:** *When you position a stamp 'outside the border', the page size is enlarged to include an additional margin. This added margin may change the orientation of the page and may influence the media selection.*

**'Stamp text':** The stamp consists of a free combination of free text (limited to 256 characters) and predefined variables. The resulting stamp text is a single line.

**Font:** The administrator selects the font name ('Arial', 'MS Gothic', 'Simsun', Gulim) and the font size (from 10 to 18 pts).




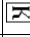
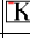
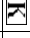





**Note:** *'Arial' is used for Latin characters, 'MS Gothic' for Japanese characters, 'Simsun' for Chinese characters, and Gulim for Korean characters.*



**Note:** *The stamp color is black (RGB(0,0,0)).*

### Rotation impact on the stamp position

Orientation	Rotation	Stamp position
Portrait	-	
	'90°'	
	'180°'	
	'270°'	
Landscape	-	
	'Short edge first' (automatic or not)	
	'Short edge first' + 'ERICSSON' folding	
	'Short edge first' + 'Add extra 180° to the short edge first'	
	'Short edge first'+ 'ERICSSON' folding + 'Add extra 180° to the short edge first'	

---

## Stamping (for Océ 9700 and Océ 9800 printers)

### Introduction

When you print with the Océ 9700 or Océ 9800 printer, you can define if a printer specific stamp must be added to your drawing (name, date...). The 'Stamping' box must be checked to apply and manage the stamping.

The 'Stamping' button is available from the 'Image' tab.

### Stamping settings

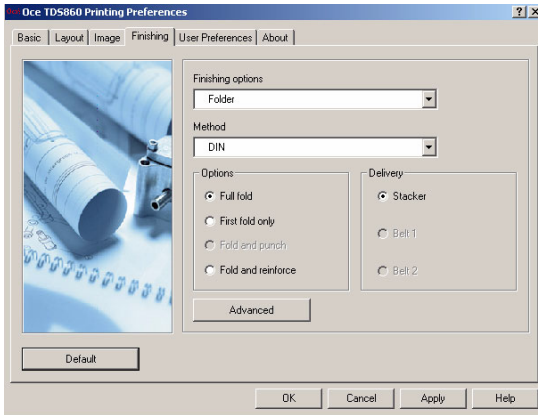
[7] Stamping settings

Setting	Description
'Stamp number'	Enter the index number of the stamp registered on the controller of the printer. The range of the value is 1 to 50.
'Stamp position'	Defines the position of the stamp within the physical page. It can be bottom, middle, top or printer default.
'Font size'	Defines the stamp font size. The associated options are small, large or printer default.
'Grayscale'	Adjusts grayscale of the stamp itself. The applied grayscale can be black, gray, dark gray, light gray or printer default.

## Select the output destination

### Introduction

You can select the output destination from the 'Finishing' page, only accessible for printers with folding option.



[40] Finishing page

### Definition

From the 'Finishing options', according to your printer model and options, you can select between several output destinations:

- 'Integrated Receiving Tray'
- 'Copy Delivery Tray'
- 'Two-tray stacker'
- 'Lower Output Tray'
- 'Top Delivery Tray'
- 'External Output'
- 'Folder'

### 'Integrated Receiving Tray'

The standard integrated tray receives up to 100 sheets.

This setting is the only output destination available when 'Copy Delivery Tray' and 'Folder' are not selected in the 'Device settings' page.

### 'Copy Delivery Tray'

This wheeled delivery tray with blower unit receives up to 150 sheets.



'Copy Delivery Tray' can be selected only if activated in the 'Device settings' page (see '[Define the device settings](#)' on page 33).

'Copy Delivery Tray' and 'Folder' can be associated.

### 'Two-tray stacker'

This high capacity stacking system coming with two trays receives up to 1500 sheets.

'Two-tray stacker' can be selected only if activated in the 'Device settings' page (see '[Define the device settings](#)' on page 33).

### 'Lower Output Tray'

The 'Lower Output Tray' can be used to deliver (long) printed files.

'Lower Output Tray' can be selected only if activated in the 'Device settings' page (see '[Define the device settings](#)' on page 33).

'Lower Output Tray' can be associated with 'Copy Delivery Tray'. It cannot be associated with 'Folder'.

### 'Top Delivery Tray'

The 'Top Delivery Tray' is an upper output.

The 'Top Delivery Tray' is automatically available in the driver.



**Note:** *Some Media types prevent you from selecting the 'Top Delivery Tray' as a finisher (e.g. Paper Uncoated 120-160g, Transparent 75-100g,...).*

### 'External Output'

The 'External Output' is a lower output. You can install an optional 'Receiving rack' at the back of the printer to receive your printed output.

The 'External Output' is automatically available in the printer driver.

The 'External Output' can be connected to a 'Folder'. To activate the folding, select 'Folder' in the 'Finishing options'.

### 'Folder'

'Folder' can be selected only if activated in the 'Device settings' page (see '*Define the device settings*' on page 33).

When you check this option, all folder settings are enabled.



**Note:** *For printers equipped with the Es-Te Folder, please configure the folding settings directly on the folder device.  
For more information, refer to the printer documentation.*

---

# Define the folding settings

## Introduction

The folder settings are accessible from the 'Finishing' page, which is only available for printers with finishing capability.

## Definition

All the folding settings can be defined if:

- Folder is previously selected in the 'Device settings' page(see '[Define the device settings](#)' on page 33).
- Folder is selected in the 'Finishing options' of the 'Finishing' tab.



**Note:** *For printers equipped with the Es-Te Folder, please configure the folding settings directly on the folder device.*

*For more information, refer to the printer documentation.*

## 'Method'

Select the folding method among the four available:

- 'DIN'
- 'ERICSSON'
- 'AFNOR'
- 'Printer default'



**Note:** *When set to 'Printer default', all folder settings are set to default values.*

## 'Portrait fold'

Check this option to force your output to be folded in the portrait orientation. This is useful if the file contains a title block (legend) that requires portrait folding method.

## 'Options'

Select the folding options. The available values depend on the folding method you selected.

## Define the folding settings

---

- 'Full fold': the printout is folded in both directions according to the selected folding method.
- 'First fold only': the printout is folded in one direction only, then exits from the folder unit. This option is useful for long plots.
- 'Fold and reinforce': the printout is folded and an additional edge is added for a reinforcing strip to be attached to the folded copy. The edge width is set at your printer front panel.
- 'Fold and punch': the output is folded and a binding edge is added for punching.



**Note:** *'Fold and punch' setting is available for the Océ TDS8x0, Océ 9700 and Océ 9800 printers only.*

## 'Delivery'

Select the deposit where the output is delivered:

- 'Stacker'
- 'Belt'



**Note:** *This setting is available according to the selected folding options.*

# Advanced folding options

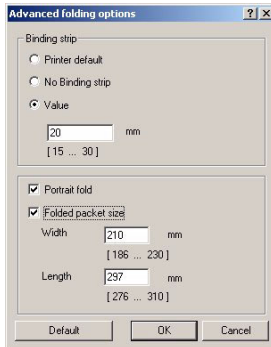
## Introduction

These options are available from the 'Finishing' page, clicking the 'Advanced' button.



**Note:** Please configure the Océ TCS500 and Océ ColorWave 600 advanced folding options directly on the folder device.

For more information, refer to the printer documentation.



[41] Advanced folding options

## Definition

The 'Binding strip' is an additional strip set to punch holes or to create tabs on a folded printout.

You can select:

- 'Printer default' to apply the value set on the printer controller.
- 'No binding strip' to remove the strip (and bypass the value set on the controller).
- A value included in a given range.

## 'Folded packet size' definition

You can define the dimensions of the folded drawing:

- 'Width': from 186 mm (7.3') to 230 mm (9').
- 'Length': from 276 mm (10.9') to 310 mm (12.3').



**Note:** If an out-of-range value is entered, the software keeps the limit value.



# Chapter 4

## How to



## Change the location of the spool directory

### Question

How can I change the location of the spool directory?

### Answer

By default the Spool directory is located in: **C:\Windows\System32\Printers**. This location is within the System partition which is sometimes rather full.

You thus have the possibility to move the spool directory to another location (in order to place it on a larger partition, for instance).

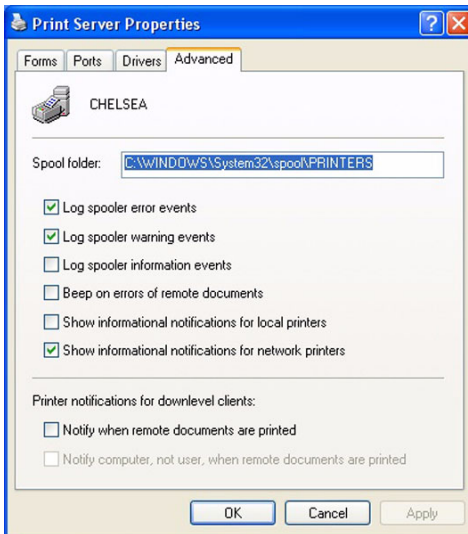
You can define the new path to the spool folder:



**Note:** *Make sure you are logged with the Administrator rights on the workstation (and on the server in case of client/server configuration).*

### Change the location of the spool folder under Windows 2000/XP/Server 2003

1. Open the Printers and Faxes window (from **Start/Settings**).
2. Click on **File/Server Properties** to open the 'Server Properties'
3. In the 'Print Server Properties' window, select the 'Advanced' tab:



[42] Print Server Properties: Spool location

4. Define a new path to the spool folder.



## Change the location of spool folder under Windows Vista

1. Open the Control Panel (**Start/Control Panel**)
2. In 'Hardware and Sound' select 'Printer'.
3. On the left-hand tree menu, right click on 'Printers' and select 'Server Properties...'
4. In the 'Print Server Properties' window, select the 'Advanced' tab
5. Define a new path to the spool folder.

# How to optimize the print performance for landscape drawings

## Introduction

In order to optimize the global performance of the system, a drawing can be rotated before being printed. The rotation can be automatically performed or manually set in the 'Advanced layout' window.

## Optimize the printing of a long landscape drawing

To optimize the printing of a landscape drawing, perform the rotation in the application and set the 'Page size' orientation to 'Portrait' in Océ Windows Printer Driver.

If the rotation cannot be set in the application, in case of a drawing wider than 36 inches (up to 42 inches, according to your printer capability), the Océ Windows Printer Driver (v 1.13 and higher) performs an automatic 'Short edge first' rotation. To enable this automatic behavior, make sure that the 'Rotation' option is set to 'Printer default' (default value), 'Media saving' or 'Productive' (see '[Rotation](#)' on [page 75](#)).



**Note:** *You can also optimize print performance on Océ 9x00 printers (see '[How to print landscape long drawings on Océ 9x00 printers](#)' on [page 102](#)).*

## 'Media saving'

The Océ printing technology analyzes the drawing surface. If possible, it automatically modifies the data orientation for a minimum use of paper surface (in square meters).

## 'Productive'

The printing technology analyzes the drawing surface and the available media. If possible, it automatically modifies the data orientation to ensure the fastest printout delivery and a minimum use of paper (in linear meters).

## Automatic rotation behavior

In Océ Windows Printer Driver (v 1.13 and higher), an automatic rotation is applied when the drawing width is > 36 inches (up to 42 inches, according to your printer capability).

As a user, you can configure the WPD driver to force a 90° clockwise rotation each time the width of a drawing is greater than the length: set the 'Rotation' to 'Short edge first' (in '**Layout**'\'**More**'\'**Rotation**').



**Note:** *If needed, activate 'Add extra 180° to the short edge first'*(see [“Short edge first” on page 75](#)).

## Print using an Océ Windows Printer Driver within AutoCAD

### Before you begin

To print in the AutoCAD application using an Océ Windows system driver, you need to previously install the printer driver as described in the section 2: Installation.



**Note:** *Specific optimizations for AutoCAD-based applications (AutoCAD 2000i and higher) are available in the Océ WPD driver, starting with version 1.7.*

### Required tools

A version of the AutoCAD application.  
An Océ Windows Printer Driver.

### Define the Océ Windows system driver as an AutoCAD plotter driver

1. Open the AutoCAD application.
2. From **File - Plotter Manager**, double click on 'Add-A-Plotter Wizard'.
3. Click 'Next' on the 'Introduction' window.
4. Select 'System Printer' and click 'Next'.
5. Choose the Océ printer associated with the Windows system driver, and click 'Next' twice.
6. Enter the plotter name and click 'Next'.  
Then you can adjust the plotter settings.

### Adjust the plotter settings

1. Click on 'Edit Plotter Configuration...' to access the driver properties.
2. On the 'Device and document settings' tab, click on the 'Custom properties' button to display the Windows system driver custom settings.



**Note:** *The 'Configuration parameters' window may display, adjust the settings according to your actual printer configuration, and validate.*

3. Define the custom settings and click 'OK' twice.
4. Click on 'Finish'.



**Note:** *Your Océ plotter is now installed, as you can see in the 'Plotters' window of the Autodesk Manager (note that the plotter name has a .pc3 extension ).*



**Note:** *You can also modify the settings before printing from your AutoCAD application in the **File - Plot** menu. Select your Océ plotter (.pc3) and click 'Properties'.*



**Attention:** The plotter (.pc3 file) you created using the Autodesk Plotter Manager is specific to one version of the Océ Windows Driver. Some functions may appear or change from one version to another. After an upgrade of the driver, check that the complete plotter configuration is restored from the .pc3 file. Adjust the settings if necessary.

---

## Print in AutoCAD



**Note:** *When printing on a system driver, always print using the plotter configuration file (.pc3) in which the AutoCAD plotter settings are stored*

1. Open the **File - Plot** window.
2. On the 'Plot device' tab, select your Océ plotter (.pc3) in the list.
3. Adjust the settings if needed.



**Note:** *You can easily set the orientation of the printout by choosing the size with the right 'Portrait' ('Portrait') or 'Landscape' ('Landscape') orientation directly in the 'Paper size' list ('Landscape' orientation is available only when the 'Page size' width fits within the printer width threshold).*

4. Click on 'Plot'.



**Note:** *You may get an error message (see [Get optimizations for AutoCAD-based applications \(AutoCAD 2000i and higher\)](#) on page 110).*

## How to print landscape long drawings on Océ 9x00 printers

### Print landscape long drawings with Océ Windows Printer Driver (version 1.13 and higher) on 9x00 printers.

1. From the application, open your file.
2. Select **File - Print** or the printer.
3. Select the Océ WPD driver and open the properties.
4. On the 'Layout' page, click on 'More' to open the 'Advanced layout' window.
5. In 'Rotation' select 'Short edge first'.
6. Click 'OK' to save your settings.
7. Print the file.



**Note:** *The 'Short edge first' is automatically performed by the driver (WPD 1.13 and higher) for the Océ TDS/TCS systems (see ["Short edge first"](#) on page 75). To enable this automatic behavior, make sure that you do not set a specific 'Rotation' angle.*



**Note:** *In previous Océ Windows Printer Driver versions, select the 'Rotated landscape' orientation (in the 'Basic' page) to set the short edge first rotation.*

# Set optimal printer configuration for Océ 9x00 printers

## Introduction

When using Océ Windows Printer Driver with an Océ 9x00 printer, the rasterization is performed by the controller. In order to get an optimal rendering, it is recommended to set the rendering method to 'Cloud' on the printer control panel.



**Note:** *Refer to your printer documentation to get the detailed procedure to set the rendering setting.*

## Océ 9300 printer: set the 'Cloud' rendering mode

1. From your Océ 9300 printer control panel, press 'Program' to enter the main menu,
2. Open the 'Quality' menu.
3. In Rendering, select 'Cloud'.

## Océ 9700 and Océ 9800 printers: check the rendering mode

1. From your Océ 9700/9800 printer control panel, press 'Machine',
2. Select 'Print settings' and validate,
3. Three pages with controller settings are printed. Check the rendering mode at the bottom of the third page.
4. If the rendering mode is not set to 'Cloud', contact your Océ Service representative.



**Note:** *If thin lines of a drawing are printed out too thick, print it in raster mode only by setting the 'Data Processing' function to 'Processing on the computer'(see 'Data Processing' on page 70).*





# Chapter 5

## Troubleshooting



# Solve installation problems

## Installation problems - Introduction

### Definition

We recommend you define the correct installation method, according to your network architecture (see [Define the correct installation method on page 28](#)).



**Attention:** Always install the driver with the same method on a same workstation. Use either the 'Setup' method or the 'Add (a) printer' method. If not, we cannot guarantee the driver's correct behavior.



**Note:** *You can have several printers and you do not know how the drivers were installed. In this case, we advise you to uninstall all the printer drivers before you add new ones.*

### Attributes

We recommend to use:

- the 'Add (a) printer' method in a Client/Server configuration on a user workstation
- the 'Setup' method when the workstation is directly connected to the printer (peer to peer)

## Back-channel restriction due to a firewall presence

### Question

How to get back-channel information after an installation on a network protected with a firewall?

### Answer

Open the TCP/IP port number 65200 on the firewall to allow the back-channel process.

## Advanced accounting problems

### Question

Why can't I connect to the printer and get the advanced accounting information?

### Answer

1. Make sure you are using the compatible version of Internet Explorer: IE 6.0 or higher.
2. If yes, open the Internet Explorer and go to the Internet Options in the Tools menu.
3. Select Connections/LAN settings.
4. Check the 'Bypass proxy server for local addresses' option.

## Why is the folder not available?

### Question

Why cannot I select the folder in the Océ WPD driver?

### Answer

When a folder is added to an Océ printer, you can select it in the 'Finishing' tab of the Océ WPD driver.

If the folder is not available in the 'Finishing' tab, make sure that:

1. the folder is actually connected and switched on
2. the folder is enabled on the printer controller
3. the folder is declared in the printer Properties ('Device settings'/'External finishers'; see [Define the device settings on page 33](#))
4. the media type selected is a media that can be folded.  
For example, the folding capability is automatically disabled:
  - with some specific media types ('Film', 'Vellum', 'Polyester', 'Translucent', 'Tracing paper', 'Photo paper'...)
  - when the weight of the selected media is too high.

## Get optimizations for AutoCAD-based applications (AutoCAD 2000i and higher)

### Purpose

The following warning message can display when plotting a file from AutoCAD. It means that the optimizations for AutoCAD were not correctly installed during the driver setup or the driver upgrade.

### Warning message during upgrade

Warning: 'The printer driver needs to update or copy an optimized dll for AutoCAD. You don't have the user rights for this action, please contact your System Administrator.'

### Pre-requisites to get the correct optimizations for AutoCAD 2000i and higher

Make sure you have the System Administrator rights on your computer to install:

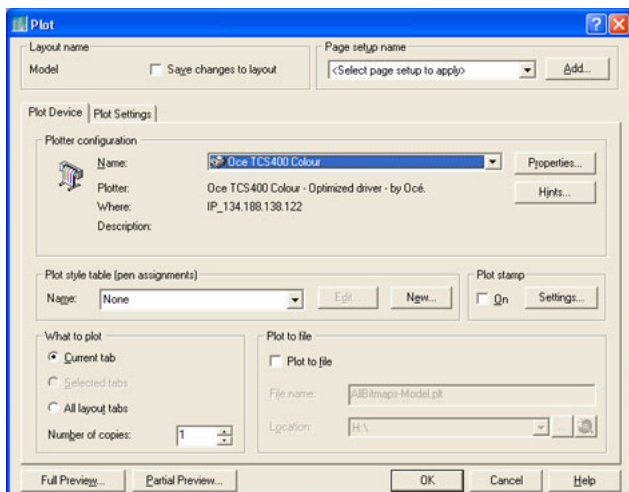
- the WPD driver optimizations,
- the WPD driver upgrade.



**Note:** See also [Get AutoCAD optimizations under Windows Vista on page 112](#).

### Check

1. Launch your AutoCAD application.
2. Select **File - Plot**.
3. Select the printer that uses the Océ WPD driver.  
The application automatically loads and launches the needed file.
4. Check that the mention 'Optimized driver - by Océ' is displayed.



[43] AutoCAD optimizations

## Get AutoCAD optimizations under Windows Vista

### Question

I am an administrator on my Windows Vista workstation. But when I plot under AutoCAD, I get the following warning message: 'The printer driver needs to update or copy an optimized dll for AutoCAD. You don't have the user rights for this action, please contact your System Administrator.'

This happens when AutoCAD is installed on a workstation AFTER the Océ Windows Printer Driver, or when WPD is installed on a client workstation running AutoCAD.

The printer driver needs to update the optimised dll for AutoCAD. To allow this action, the system needs the writing rights in the `\AutoCAD\Drv` repository.

### Answer

Under Windows Vista, administrators are considered as standard users unless the system prompts them to elevate their rights (except if you enabled the 'Administrator account' in the `\Local Policies\Security Options`).

The Océ Windows Printer Driver cannot prompt users to change their rights. Thus, when the driver tries to copy the up-to-date optimized dll for AutoCAD (which acts as a plugin), Windows Vista refuses. A warning message pops up, as for a standard user profile.



**Note:** *Before you begin, make sure the AutoCAD application is closed.*

1. On the workstation, open the following folder:
  - For Windows x32 platforms: **Windows - System32 - Spool - drivers - w32x86 - 3**
  - For Windows x64 platforms: **Windows - System32 - Spool - drivers - x64 - 3**
2. Make a right click on the executable file "oecdip.exe" and select 'Run as administrator'.
3. Click 'Allow' to confirm the action.  
The executable file copies the optimized dll for AutoCAD in the correct repository.
4. In **Programs Files - AutoCAD - Drv**, check the presence of the optimized dll "oecdix.hdi".  
If so, the update applies to all the AutoCAD versions installed on the workstation.



**Note:** *You can also use this procedure with the other Windows platforms, if the optimized dll for AutoCAD does not update correctly.*



---

# Improve output quality

## Achieve optimal output quality

### Vectors printing on the Océ TDS400

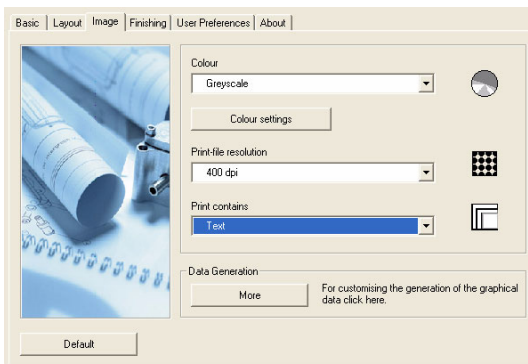
#### Question

Why are some vectors printed in bad quality on the Océ TDS400 printer, especially when those vectors appear as light color vectors in the application?

#### Answer

Solution:

1. Check your Océ TDSx00 printer version (see '[Check your Océ TDS printer version on page 16](#)') to make sure that the controller version is compatible (TDS400 1.4.3 or higher, TDS600 3.2.3 or higher, TDS800 1.3.3 or higher).
2. Open the 'Image' tab in the Océ WPD driver, or the Océ Settings Editor on the controller.
3. Set the 'Print optimization' to 'Lines/Text'.



[44] Lines/Text

## Image quality according to an Océ TDS printer version

### Question

Why is the image quality different between an Océ TDS400 (before 1.4.3) and an Océ TDS400 (1.4.3 and higher) or between an Océ TDS600 (before 3.2.3) and an Océ TDS600 (3.2.3 and higher) or between an Océ TDS800 (before 1.3.3) and an Océ TDS800 (1.3.3 and higher)?

### Answer

- Dithering matrix algorithm has changed from one controller version to another in order to improve the overall image quality.
- The dithering parameters 'Clustered' and 'Cloud' were accessible on the controller only through the Océ Settings Editor. In the new controller versions, the dithering matrix is no longer accessible but is directly embedded in the 'Print optimization' parameters.

Tips to get the closer image quality as on your previous Océ TDS version:

<b>If</b>	<b>Then</b>
You selected the 'Clustered' setting in the previous controller version	Set the 'Print optimization' to 'Standard' or 'Poster' in the new version.
You selected the 'Cloud' setting in the previous controller version	Set the 'Print optimization' to 'Lines/Text' in the new version.

# Get a correct layout or rotation of the drawing on an Océ TDS/TCS printer

## Question

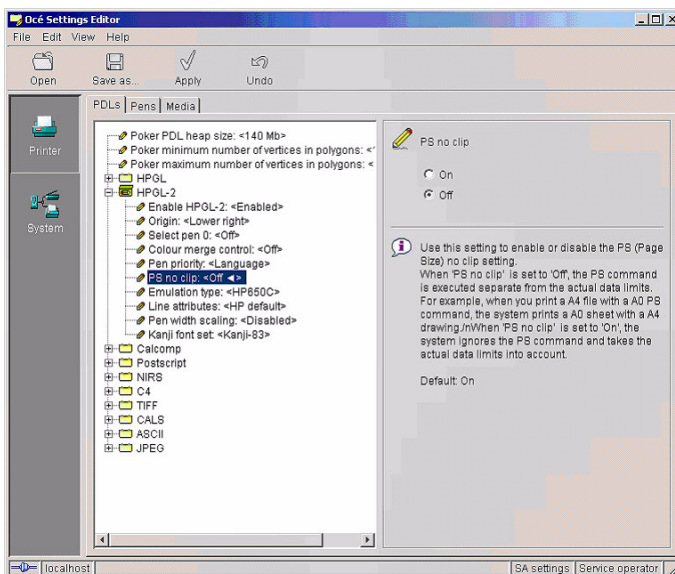
I have applied a drawing rotation but why was the rotation not applied / the drawing not printed on my Océ TDS/TCS printer?

Why is the layout of my drawing not correct (position of the drawing on the page, margins)?

## Answer

On the printer controller, within the 'Océ Settings Editor', set the 'PS no clip' setting to 'Off'.

1. Open the 'Océ Settings Editor'.



[45] Océ Settings Editor

2. From the 'View' menu, set 'SA Settings'.
3. In the 'PDLs' tab, open the HPGL-2 tree.
4. Select 'PS no clip' and check 'Off' on the right part of the window.



**Note:** Be aware that for the Océ TCS/TDS printers, an automatic rotation is applied when the drawing width is > 36 inches (see ['Rotation' on page 75](#)).

# Large-format printing

## Question

Why does large-format printing of PDF files from Acrobat Reader result in unexpected problems using the HP-GL/2 Driver (error message, missing data, ...)?



**Note:** *This issue may occur in other software applications such as Adobe Illustrator and PhotoShop when using the Océ Windows Printer Driver ('Data Processing' set to 'Best Performance (recommended)').*

## Answer

As the problem happens because the page size in pixels is too big for the application print engine, the solution consists in reducing the page number of pixels. As the physical page size cannot be reduced, change the document resolution:

1. Select a lower 'Print-file resolution' in the 'Image' tab,
2. or use the Océ PostScript driver.

## On the printer side

Check and adjust if necessary the Heap Size (using **Settings Editor\System Administrator settings\Printer\PDLs\Poker PDL heap size**).

## On Windows side

- Disable the EMF file generation (in the Printer Properties, go to the Advanced tab and uncheck the box 'Enable Advanced printing features').
- Check the available size for spooling and change the location of the spooler if needed ([Change the location of the spool directory on page 96](#)).  
In a Client/Server configuration, check the available size for spooling on the client workstation AND on the server.

## Cut synchro

### Question

When I selected 'Synchro' in the 'Cut size' method in WPD, why is a white area printed anyway at the end of the print?

### Answer

There are 2 possible reasons:

- The drawing size is smaller than the minimal cut length. You cannot change it because there is a minimum cut length which varies according to the printer model.
- 'PS no clip' is set to 'Off' in the controller and the printer cuts according to the page size (as in application) you selected in the driver. You can select between the 2 solutions below:

1. Set 'PS no clip' to 'On' in the Océ Settings Editor or,
2. Redefine your 'Page size (as in application)' in the Océ WPD 'Basic' page.

## Set the 'Processing on the computer' (raster only) mode

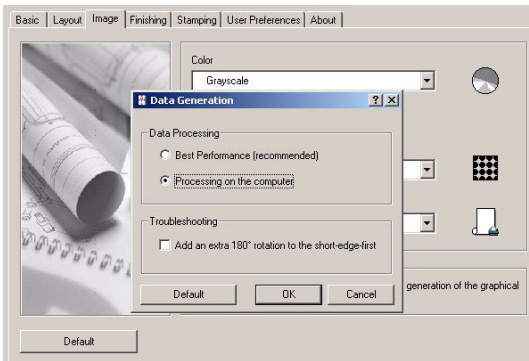
### Question

Lines are missing on the output when using mixed mode and when autorotation is set on the controller.

### Answer

Print the file in 'Processing on the computer' (Raster only) mode:

1. Open the **Start - Settings - Printers** window.
2. Right click on the printer you use to open the 'Properties'.
3. Click on 'Preferences'.
4. Select 'Image' tab.
5. Click the 'More' button.
6. Check the 'Processing on the computer' radio button.



[46] 'Processing on the computer' mode



**Note:** 'Processing on the computer' mode resolution is limited to 300 dpi.



**Note:** You can also set the 'Rotation' to 'Short edge first' in the driver (for Océ Windows Printer Driver version 1.13 and higher), or 'Page size' to 'Rotated landscape' (previous Océ Windows Printer Driver versions).

# Manage the number of copies

## Manage the number of copies under Windows 2000/XP

### Question

In Microsoft PowerPoint, Microsoft Excel and Corel applications under Windows 2000/XP, why is the number of copies set in the driver not taken into account?

### Answer

Set the number of copies from the application:

1. Open the **File - Print** window.
2. Enter the number of copies in the appropriate field.

## Manage the number of copies with AutoCAD

### Question

With Océ WPD for Windows operating systems, why is the number of copies set in the driver not taken into account in the AutoCAD 2000 and higher.

### Answer

Set the number of copies directly from the application. This value overwrites the value set in the driver.

1. Open the **File - Plot** window.
2. In the 'Plot device' tab, set the number of copies.



---

# Manage clipping

## Define the settings to manage clipping

### Question

The drawing is lightly clipped on the borders. How to check the proper settings?

### Answer

In case of clipping, check that you are using the default driver configuration, and add edges if needed.

1. In case of left or right clipping, set the following settings:
  - From the 'Layout' tab click 'More' to open the 'Advanced layout' and set the 'Alignment' to 'Center'.
  - Check that the 'Shift' function is not activated.
2. In case of top or bottom clipping, add a 'Leading strip' and a 'Trailing strip' from the 'Basic' / 'Cut size' window.



**Note:** *If needed, you can also check the 'Printable area' and the 'Image size correction' settings from the 'Basic' / 'Preferences' window. They can allow the application to scale slightly the image ((see "Printable area" on page 74) and (see "Image size correction" on page 73)).*

# Overcome limitations in applications

## Océ Windows Drivers and AutoCAD 2000

### Question

Why do errors occur when printing in AutoCAD 2000?

### Answer

Check your AutoCAD version has been updated with the AutoCAD Plotting Update Patch.

1. Check the AutoCAD version (see procedure below).
2. If the version has not been updated, get the AutoCAD Plotting Update Patch from the Autodesk Product Support website <http://support.autodesk.com>.
3. Install the patch.

### Checking whether your AutoCAD 2000 version has been updated

1. In AutoCAD, enter the line command '\_vernum' in the command window.
2. Validate. If the result is 'VERNUM = "T.1.08"' or higher, the patch has been installed.

```
Command: _vernum  
[VERNUM = "T.1.09" (read only)  
[47] AutoCAD 2000
```

## Printing problems with VectorWorks

### Question

Why do I get no print or line missing when printing a document >A0 in VectorWorks using the Océ WPD driver?

### Answer

This is due to a resolution limitation in the application.

Set the resolution to 300 dpi in the Océ WPD driver (see '[Print-file resolution](#)' on [page 68](#)).

## Long outputs in Microsoft PowerPoint

### Question

From Microsoft PowerPoint, I want to print a document on a 42'x60' page size. When I enable the 'Fit to paper' setting within the application, why is my output clipped?

### Answer

This situation can occur when you select a large page size and you set the 'Print-file resolution' to 600dpi.

Indeed, when you set a 600dpi resolution, Microsoft PowerPoint cannot print documents longer than 54-56 inches. As a result, the output is clipped.

Several workarounds can solve this issue:

1. Scale down your document.
2. Set the resolution of your document to 300dpi.
3. Define a 'Custom size' of 42'x54'.



**Note:** *Other applications can have the same limitation.*

# Index

## A

Accounting	53
Account ID	49
Accounting status	53
Accounting storage	53
Advanced accounting	33, 53
User ID	49
Advanced accounting	33, 38, 53
Accounting status	53
Accounting storage	53
Refresh	53
Advanced folding	93
Advanced layout	
Alignment	78
Mirror	77
Rotation	75
Shift	79
Alignment	78
AutoCAD	
PC3	100

## B

Back-channel	36, 49
Belts	41
Binding strip	93

## C

collate	82
Color	65
Color feel	65, 67
Color settings	65, 67
Enhanced colors	67
Color feel	67
Copy Delivery Tray	40
Custom size	59, 62
Cut size	80
Custom	80
Standard	80
Synchro	80

## D

Data Generation	
Data Processing	68
Data Processing	
Best Performance	68
Processing on the computer	68
Device settings	33
Advanced accounting	38
Back-channel	36
Connect	35
dithering matrix	71

## E

External finishers	33, 40
External Output	40

## F

Feed definition	39
Finishing	40
Copy Delivery Tray	88
External Output	88
Folder	88
Integrated Receiving Tray	88
Lower Output Tray	88
Top Delivery Tray	88
Two-tray stacker	88
Folded packet size	93
Folder	40, 41, 88, 91
First fold only	91
Fold and punch	91
Fold and reinforce	91
Full fold	91
Portrait fold	91

## I

Image size correction	73
Inbox	83

## L

Landscape	57, 62
-----------	--------

## Index

---

Language ..... 49  
Layout  
    Scale ..... 72  
Leading strip ..... 81  
Lower output tray ..... 40

## M

Media saving ..... 75  
Media source ..... 63  
Media type ..... 63  
Mirror ..... 77

## N

Number of feeds ..... 39

## O

Océ enhanced colors ..... 67  
Océ Ticket ..... 48

## P

Page orientation ..... 57  
Page size ..... 59  
Page size list filter ..... 61  
Portrait ..... 57  
Poster mode ..... 68  
Preferences  
    Image size correction ..... 73  
    Page size list filter ..... 61  
    Printable area ..... 74  
Print contains ..... 68  
Print optimization ..... 68  
Printable area ..... 74  
    Full size ..... 74  
    Inked area ..... 74  
Printer default ..... 48  
Printer description ..... 33  
Printer information ..... 33, 55  
    Refresh ..... 55  
Printer options ..... 33  
Productive ..... 75  
Punching unit ..... 41

## Q

Quality ..... 68

## R

Reinforcement unit ..... 41  
Resolution ..... 68  
Rotation ..... 75

## S

Save as local ..... 62  
Save to share ..... 62  
Scale ..... 72  
    Percentage ..... 72  
    Scale to media ..... 72  
Shift ..... 79  
Short edge first ..... 57, 75  
    Add extra 180° to the short edge first ..... 75  
Stamping ..... 84, 87  
Strips ..... 81

## T

Templates ..... 49, 51  
To inbox ..... 83  
Top Delivery Tray ..... 40  
Trailing strip ..... 81  
Two-tray stacker ..... 40

## U

Uninstall ..... 42  
Units ..... 49  
Upgrade ..... 45  
User Preferences ..... 49  
User preferences  
    Back-channel ..... 36