



October 26, 2020

USED EQUIPMENT



Biglerville, PA
800-345-3546

Bellevue, OH/Peru, IN
800-848-8460

Sikeston, MO
573-475-9496



SPRAYERS



\$180,000

2015 AGCO Rogator 1300B, 1367 hours, AGCO Power T4 8.4L 370 hp diesel engine, 1300 gal. SS tank, 120 ft booms with SS boom lines, 20 in. nozzle spacing, 7-section shutoff valve, Raven Viper Pro, Phoenix 300 guidance, parallel swathing, foam marker, A/C, AM/FM radio, air ride seat, fenders, 380/90R46 tires (50% remains). Motivated seller. SN: AGCA1300LFNSL1015 (Dansville, NY) **BROKERED**



\$105,000

2015 GVM 400HC Mako, 626 hours, Cummins 4.5L 130 hp diesel engine, Allison auto. trans., 400 gal. poly tank, 60/80 ft booms with poly boom lines, 20 in. nozzle spacing, triple body nozzles, 5-section shutoff valve, Raven SCS460, Greentronics, rear floodlight kit with 4 LED lights, A/C, AM/FM radio, air ride seat, front and rear fenders, 320/85R24 liquid filled front tires (70% remains), 380/85R24 rear tires (60% remains). SN: MK-16400HC1003 (Cowelsville, NY) **BROKERED**



\$109,000

2017 GVM 440 Mako, 370 hours, Cummins QSB4.5L 130 hp diesel engine, Allison auto. trans., 400 gal. poly tank, 60/80 ft booms with SS boom lines, 20 in. on center nozzle spacing, triple body nozzles, 5-section shutoff valve, Raven 460, Envisio Pro, Norac height control, extended axle kit, parallel swathing, air ride seat, A/C, AM/FM radio, 380/85R24 tires (80% remains), front tires are liquid filled. SN: MK-174401007 (MO) **No. U1440**



\$65,000

2009 GVM 9275 Prowler, 4406 hours, Cummins QSB6.7L 275 hp diesel engine, Funk 10-speed powershift trans., 1600 gal. SS tank, 70/90 ft booms with SS boom lines, 15 in. nozzle spacing, 5-section shutoff valve, triple body nozzles, Ag Leader 1200, parallel swathing, A/C, AM/FM radio, air ride seat, 380/90R46 Goodyear tires. SN: RC-099909T1064 (Winchester, VA) **BROKERED**



\$95,000

2011 GVM 9275 Prowler, 3994 hours, Cummins QSB6.7L 275 hp diesel engine, Funk 10-speed powershift trans., 1450 gal. SS tank, 70/90 ft booms with SS boom lines, 15 in. nozzle spacing, 5-section shutoff valve, triple body nozzles, Raven Viper Pro, parallel swathing, AutoSteer, A/C, AM/FM radio, air ride seat, 380/90R46 Trelleborg tires (30% remains), includes set of floater tires not pictured. SN: RC-119909T1083 (Winchester, VA) **BROKERED**

SPRAYERS



\$10,500

2005 Hardi Navigator 1100, 540 PTO pump, 1100 gal., 80 ft booms with plastic boom lines, single nozzle body, 20 in. nozzle spacing, 4-section shutoff valve, foam marker, chemical inductor, manual adjustable axles, 12.2-42 Titan tires (35% remains).

SN: 12391 (OH) **No. U1441**



\$55,000

2009 International 7300, 3115 hours, 22,444 miles, Maxxforce 300 hp diesel engine, 4-wheel drive, Allison 3500 6-speed trans., 850 gal. SS tank, 50 ft booms with SS boom lines, 15 in. nozzle spacing, 3-section shutoff valve, 5-way body nozzles, Raven Envisio Pro, A/C, AM/FM radio, CD player, air ride seat, 380/85R34 tires, 90 in. centers (20% remains), includes (4) 385/65R22.5.

VIN: 1HTWBAAN59J159160 (PA) **No. U1443**

Spray Rig SN: SR-09850TK1005



\$33,950

2008 International DT 7400, 69,400 miles, MaxxForce 300 hp diesel engine, Eaton Fuller 10-speed trans., 1400 gal. SS tank, 55 ft booms with SS boom lines, 60 in. nozzle spacing, 3-section shutoff valve, single body nozzles, Raven, SS chemical eductor, foam marker, A/C, AM/FM radio, air ride seat, fenders, includes front 385/65R Bridgestone (40% remains) and rear 700/50 Alliance tires (40% remains).

SN: 1HTWDAARX8J041245 (Cranbury, NJ) **BROKERED**



\$30,000

1994 Loral Easy Rider, 3069 hours, 20,844 miles, International 300 hp diesel engine, Allison trans., 1800 gal. SS tank, 55/85 ft Benson booms with SS boom lines, 60 in. nozzle spacing, 3-section shutoff valve, Raven 460, SS chemical eductor, A/C, AM/FM radio, air ride seat, (4) floater tires (20% remains).

(Dickerson, MD) **BROKERED**



\$10,000

2015 Ag-Chem AirMax 180, 60 ft booms, electric roll tarp, Raven control nodes. Removed from a 2015 1300B Rogator, came off of unit in working condition.

(PA) **No. U1436A**



\$125,000

2014 AGCO RG1300 RoGator, 1892 hours, AGCO 8.4L 330 hp turbo diesel engine, 4WS, painted 409 SS New Leader L4000G4, Raven Viper Pro, Phoenix 300 GPS, parallel swathing, air ride seat, A/C, beacon lights, fenders, electric roll tarp, Michelin 380/90R46 tires (front 45%, rear 35% remains).

SN: AGCA1300VENS1017 (PA) **No. U1445**

SPREADERS



\$110,000

2015 AGCO TG7300 TerraGator, 2100 hours, AGCO 330 hp diesel engine, CVT auto. trans., painted 409 SS New Leader L4000G4 14 ft spreader, Viper Pro, AgCommand controller, Slingshot ready, A/C, premium leather air ride seat, 1000/50R25NHS front tire, 1000/50R25 rear tires (70% remains). Engine rebuilt 6/18 by AGCO under warranty, has 500 hours on it.

SN: AGCA7300LFNSN1005 (MO) **No. U1379**



\$8,000

2015 GVM 5' Fusion Insert, 5 ft fusion insert, fits in GVM Double Duty 8, 9.5 and 11 ton spreader boxes

SN: 130779 (PA) **No. U1431**



\$155,000

2019 GVM 7300 Hydra Spread, 5000 miles, Cummins B6.7 250 HP engine, Allison trans., 4WD, 409 SS 8 ton GVM Double Duty spreader, Shur-Lok Roll Tarp, Viper 4+ with guidance software, RGL600 light bar, A/C, AM/FM radio with Weather Band, Front Axle, (2) 385/65R22.5 Goodyear tires, (2) rear 600/60-30.5 floater tires.

(Biglerville, PA) **No. U1444**



\$50,000

2010 GVM 9275 Prowler, 5099 hours, Cummins QSB6.7L 275 hp diesel engine, auto. Funk 10-speed powershift trans., 9.5 ton GVM Double Duty spreader body, Raven Viper 4, A/C, AM/FM radio, air ride seat, manual roll tarp, includes 650/75R32 front (10% remains) and 800/65R32 rear (60% remains) Goodyear floater tires. **Frame sandblasted and painted, Winter 2019.**

SN: RC-101149T1194 (Piedmont, MO) **BROKERED**



\$150,000

2013 GVM E325 Prowler, 1738 hours, Cummins QSL 8.9 hp turbo diesel engine, ZF 6-speed trans., 409 SS painted GVM Double Duty 11 ton spreader with a 5 ft fusion insert, Viper Pro, SmarTrax 3D autosteer, A/C, AM/FM radio, air ride seat, 380/90R46 Row crop tires (90% remains).

SN: CS-13325XI1012 (OH) **No. U1409**



\$175,000

2015 GVM E325 Prowler, 2700 hours, Cummins QSL9 325 hp diesel engine, 1010 ft-lb torque, auto. ZF WG 210 6-speed powershift trans., 120 in. axles, variable coil spring suspension, 409 SS painted GVM Double Duty 11 ton spreader, Viper Pro, parallel swathing, A/C, AM/FM radio, air ride seat, 380/755R42 tires (40% remains), and Firestone flotation tires, 650 front and 800 rear. Rebuilt engine by Cummins in August 2018. **Frame sandblasted and painted in February 2019.**

SN: CS-15325XI1034 (PA) **No. U1358**



\$225,000

2017 GVM E330AA Prowler, 1287 hours, Cummins QSL9 330 hp turbo diesel engine, Funk DF250 powershift 11-speed trans., Dromos adjustable axles rated for 30,000 lb 108-120 in., 304 SS GVM Double Duty 11 ton spreader with 5 ft fusion insert, Raven Viper 4+, RGL 600 Light Bar, SmarTrax Auto Steer, 480/95R50 row crop tires, tires shown not included. Remainder of 5-year engine/trans./axle warranty included, began April 2017.

Frame sandblasted, painted, and reconditioned by GVM June 2020.

SN: CS-17330AA1016 (OH) **No. U1420**



\$265,000

2017.5 GVM E330AA Prowler, 733 hours, Cummins QSL9 330 hp turbo diesel engine, Funk DF250 powershift 11-speed trans., Dromos adjustable axles rated for 30,000 lb, 304 SS GVM Double Duty 11 ton spreader, Viper 4, SmarTrax, 600S Receiver, A/C, air ride seat, front fenders, 380/90R46 tires (90% remains). Includes remainder of 5-year engine/trans./axle warranty, began on 11/30/17.

SN: CS-17330AA1020 (MO) **No. U1365**



\$190,000

2017.5 GVM E330AA Prowler, 2268 hours, Cummins QSL8.9 330 hp turbo diesel engine, Funk DF250 powershift 11-speed trans., Dromos adjustable axles rated for 30,000 lb. 108-120 in., 304 SS New Leader L4000G4 11 ton spreader, Raven Viper 4+, SmarTrax, RGL 600 Light Bar, air ride seat, A/C, AM/FM radio, 380/90R46 Michelin tires (60% remains), includes set of floater tires. Includes remainder of 5-year engine/trans./axle warranty, began on 12/21/17.

SN: CS-17330AA1024 (PA) **No. U1442**



\$8,500

1988 International 2554 Spreader, DT466 210 hp diesel engine, Spicer 5-speed, 2-speed rear manual trans., air ride seat, 11 ft New Leader L2020GT spreader, New Leader Mark 4 controller, Firestone front tires (50% remains), and Michelin rear tires (50% remains).

SN: 1HTZLDBR9KH66783 (VT) **BROKERED**



\$28,000

1996 International Spreader, DT466 turbo diesel engine, Roadranger manual 10-speed trans., 304 SS New Leader L2020GT-12 spreader, brand new InCommand 800 with 6500 GPS receiver, front 48/25.00 tires (40% remains), rear 66/43.00/25 right (50% remains) left (30% remains).

SN: 1HTGBAAN6SH204074 (OH) **No. U1427**



\$95,000

2015 Miller Condor GC75, 833 hours, New Leader L3030G4 spreader with 4 in. sideboards, Viper Pro, SmarTrax, RGL 600 Light Bar, front wheel assist, row crop tires (40% remains). **Farmer owned**

(PA) **No. U1302**

SPREADERS



\$65,000

2011 RBR Vector 300, 4300 hours, Cummins 8.3L diesel engine, Allison auto. 4-speed trans., AxleTech axles rated @ 29,000 lb, painted 409 SS 11-ton New Leader L4000G4 spreader body, Raven Viper Pro, Auto Steer, John Deere cab, 380/90R46 front BKT (60% remains) and 380/90R46 rear Michelin tires (35% remains).

(MO) **No. U1435**



\$165,000

2017 RBR Vector 300, 2958 hours, Cummins QSB 8.3 300 hp diesel engine, Allison 6-speed auto. trans., New Leader L4000G4 spreader body, Viper Pro, A/C, air ride seat, 380/90R46 tires (50% remains). Also includes (4) Firestone 650/65R38 floater tires.

SN: M1700598 (PA) **No. U1422**

TENDERS



\$15,000

2001 International 4900, 481,187 hours, International DT-466 diesel engine, Eaton manual trans., MP hydraulic transfer pump, Parker PTO, 1000, 500, 65 gal. poly tanks, (2) 100 gal. SS pods.

SN: 1HTSDAAN51H402034 (Winchester, VA) **BROKERED**

MISCELLANEOUS



\$10,000

2010 Dalton Ag DLQHD35, 15 row side dress rig with 1200 gal. poly tank, 37.5 ft booms, 30 in. nozzle spacing, 3-sections, Y-drops, John Deere rate controller for 2630 screen. Raven rate controller and display still available. Coulters and shanks available for injecting nitrogen.

SN: 11607 (Trappe, MD)

BROKERED



\$5,000

2006 GVM Spray Rig Only, 400 gal. SS tank, 50 ft booms, poly boom lines with rubber hose, 3-section shutoff valve, single body nozzles, SS eductor.

(NY) **BROKERED**



\$5,000

2010 4660 Spracoupe Perkins Diesel Engine 1104D, 874 hours, 4 cylinder, 4.4L (269 in.³), 125 hp (93 kW) at 2200 rpm. Engine includes: alternator, starter injection pump, turbo charger, and primary fuel filter and housing.

(PA)



\$5,000

AxleTech Front Axle, complete 99 in. front axle.

SN: 00054

(Landisburg, PA)

BROKERED



AxleTech Rear Axle,
complete 99 in. rear axle.
SN: 00054
(Landisburg, PA) **BROKERED**

\$3,000



(2) Goodyear Row Crop Tires, 380/90R46, white, with 1 in. offset. **Brand new!**
(PA)

\$4,125



Alliance Turf tires,
(4) Alliance turf tires. Will fit any Prowler. 850/50-30.5.
(Sikeston, MO) **BROKERED**

\$6,000



(4) Firestone Row Crop Tires and Rims, 380/90R46, white, with 1 in. offset.
(PA)

\$8,000



Goodyear Tires,
(2) 650/75R32 (5% remains),
(2) 800/65R38 (15% remains),
white rims.
(PA)
No. U1421

\$3,174.60



Goodyear Ultra Sprayer Tire, (1) new Goodyear Ultra Sprayer tire with 1 in. offset wheel. 380/90R46.
(Sikeston, MO) **BROKERED**

\$1,300



(2) Rims 12x46 in., heavy bead gray, W46-03500P15. Brand new!
(PA)

Call for Price



October 26, 2020

STOCK EQUIPMENT



Biglerville, PA
800-345-3546

Bellevue, OH/Peru, IN
800-848-8460

Sikeston, MO
573-475-9496



SPRAYERS



\$165,000

2012 GVM E325 Prowler, 35 demo hours, Cummins QSL9 325 hp diesel engine, 1010 ft-lb torque, ZF WG210 powershift 6-speed trans., 114 in. axles, variable coil spring suspension, barely used, 1800 gal. SS tank, 70/90 ft booms, 20 in. on-center nozzle spacing, 10-section shutoff valve, triple body nozzles, Viper Pro, AutoBoom, AccuBoom, Phoenix 200 receiver, SmarTrax 3D, Raven UltraGlide, chemical eductor, foam marker, camera on spray rig, 2 in. front fill.

SN: CS-12325XI1011 (PA)



\$295,000

2015 GVM E325 Prowler, 4 demo hours, Cummins QSL9, 325 hp diesel engine, ZF WG210 powershift 6-speed trans., 114 in. axles, variable coil spring suspension, 1800 gal. SS tank, combo ready, A/C, AM/FM radio, air ride seat, chemical eductor, fenders, 380/90R46 Trelleborg tires.

SN: CS-15325XI1039 (PA)

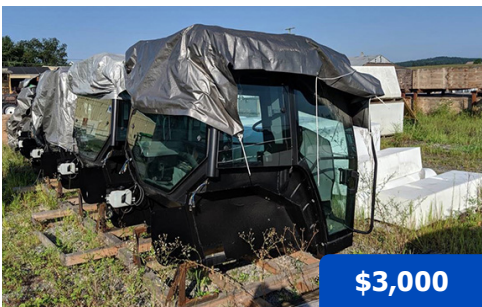


\$295,000

2014 GVM E370 Prowler, 393 demo hours, Cummins QSL9 370 hp diesel engine, 1800 gal. SS tank, 4 chemical induction tanks, 60/90 ft booms, dual, low, and high volume boom lines for suspension fertilizer, high volume Ace pump, Viper Pro, Phoenix 200 receiver, SmarTrax 3D, UltraGlide, 380/90R46 tires. Includes 5-year warranty, began May 15, 2017.

SN: CS-14114XI1031 (PA)

MISCELLANEOUS



\$3,000

Crenlo Genesis Cab, Brand new cabs made for 1996-2014 GVM Prowlers. Will fit all Rowcats, 1149/9909T and 9275 Prowlers. Can also fit New Holland Genesis series tractors with modifications.

(PA)



\$1,500

New Holland Chopper Cab, Brand new cab purchased for Multi-Purpose Utility Vehicle cab. Never used, built to fit New Holland Chopper.

(PA)

MISC.

PART NUMBER	DESCRIPTION	QUANTITY	PRICE
W38-13300	Rim 38 x 12 11/16 in. offset (front)	2	\$566.00
W-619060R	Rim W14 x 16.1	2	\$73.00
42-01160 (PA)	Assy., Dash Panel Electronic 2004	3	\$1,327.00