

INSIDE THIS ISSUE:**OCTOBER LUNCHEON 2****MEMBERS' NEWS 3****ACTIVITIES:****Book Clubs 4****Coffee Groups 4****Genealogy 6****Food/Wine 5 -6****Singles 6****Outings 6****RMSG 10****GAMES AND SPORTS****Bridge 7****Bunco 7****Hand & Foot 7****Mah-jongg 7****Gaming Unplugged 8****Pinochle 8****Golf/Snowshoeing 8****Hiking/Skiing 8****Business Referrals 12-13****Bulletin Board 13****Club Information 14****OCTOBER Calendar 15**

OASIS

The monthly newsletter of the Newcomers' Club of Salt Lake City, Inc.

VOLUME 57 NO 5

OCTOBER 2015



RMSG 25th ANNIVERSARY CELEBRATION

**WHEN:** Tuesday, October 20, 2015**WHERE:** The Olde Meeting House
4120 South Highland Drive**TIME:** 11:30am Social 12:00 Noon Lunch**COST:** \$25.00 per person, includes tax & gratuity**WINE:** Available as usual

MENU: HARVEST SALAD: Mixed Greens, Feta Cheese, Apples, Red Grapes & Candied Almonds with Maple Dijon Dressing
ENTREE: Chicken Cordon Bleu with Rice Pilaf with Medley of Vegetables
DESSERT: Lace cookie Cup served with Vanilla Ice Cream topped with Hot Fudge
 Menu includes Dinner Roll, Butter, Coffee & Tea.
 Citrus Water



ONE AND DONE REAL SALT LAKE GAME WEDNESDAY

OCTOBER 14, 2015 7:30PM

\$50.00 per person, 20 seats available

Includes: VIP Buffet, Entrance & Seats

Send Check made out to Newcomers to:

Jan Meigs, 9571 Hidden Point Dr, Sandy
Utah 84070

*Hurry, make your reservations now,
only 20 seats.*

**Mission Statement**

The Newcomers' Club of Salt Lake City, Inc. is an organization that promotes, extends and supports civic, social, patriotic, and charitable endeavors in the community.

Membership Protection

Soliciting business at Newcomers' Club functions is prohibited. Members' names, street or email addresses or phone numbers may not be used or furnished to any business organization, charitable or civic, for any purpose other than Club business.



Em's Restaurant

Em's, 271 North Center Street, Salt Lake City



The home of Em's Restaurant is located in the meticulously renovated hundred –year-old Center Street Market Building, cleverly situated in the heart of Salt Lake City 's historic Marmalade Hill. It is here where Chef/Owner Emily Gassmann continues her family legacy of a local neighborhood bistro.

The fare at Em's is simple elegance. All items are prepared fresh by hand from only the finest local and organic ingredients.

Em's is rated #51 of 1124 restaurants in Salt Lake City . Maximum 60 people.

USE FORM BELOW TO MAKE YOUR RESERVATIONS

DATE: Tuesday, October 13, 2015
PLACE: Em's Restaurant
 271 North Center Street, Salt Lake City
TIME: Social: 11:30am
 Lunch: 12:00 noon
COST: \$23.00 (Includes tax and gratuity)

MENU:

SALAD: House salad with balsamic vinaigrette and Parmesan cheese
ENTRÉE #1: Sausage and Butternut Squash Risotto
ENTRÉE #2: Chicken Kebabs over Rice
DESSERT: Brownie with Vanilla Ice Cream
WINE: Red and White, \$7.00 per glass, cash bar
INCLUDED: Coffee and Lemonade

**RSVP and payment must be received by
 Friday, October 9, 2015**

GUEST SPEAKER

Cindy Lund is on the board of FRIENDS of Great Salt Lake and the owner of Visit the Great Salt Lake (Visit GSL.com). She has been to just about every place a person can go on, in, around and above the lake. She will discuss the best places and ways to experience our inland sea while taking a virtual tour around the lake. She will have handouts and a drawing for prizes.

Directions: State Street, north to North Temple, left at North Temple, right at Main Street, left at Center Street. Proceed to 271 North Center Street. Parking on both sides of the street and in back of Em's.

Reservations—October Luncheon—\$23.00 per person

Please fill in the requested information and mail with your check payable to **Newcomers' Club to Barbara Sund, 1717 East 6550 South, Salt Lake City, UT 84121.** Phone 801-272-6601.

Reservations with payment must be received by Friday, October 9, 2015

No refunds will be given for cancellations made within seven days of the Luncheon.



Name _____	Phone # _____	Member New Member Guest (Please circle one)	Entrée # _____
Name _____	Phone # _____	Member New Member Guest (Please circle one)	Entrée # _____
Name _____	Phone # _____	Member New Member Guest (Please circle one)	Entrée # _____

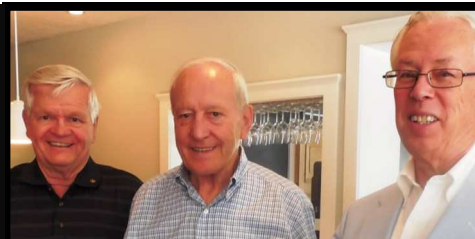
MEMBER NEWS

Late in August, Winifred (Win) Bornman's sister Marjorie called from Calgary, Canada, to notify Newcomers' Club members that Win passed away peacefully either the night of August 22 or early in the morning on August 23 at St. Joseph's Villa. Win grew up in Paisley, Scotland. In her youth, she was a champion tennis player. She taught chemistry to returning veterans of World War II before going to Geneva, Switzerland, to teach chemistry to American students. She enjoyed being on the golf course and talking about the British Open, especially when it was played at her home golf course, St. Andrews in Scotland. She has been a member of Newcomers' Club since 1999 when she and her husband moved to Salt Lake City from Tennessee.

Kathryn Miller, Socail Secretary
385-237-9205
klesliemiller34@gmail.com



September
2015
Luncheon
Provisions
Guest
Speaker
Jeff
Zimmerman



Month for Shaken Baby Syndrome

During the month of November, a hand knitted or crocheted, purple hat is sent home with every new born baby, as well as information to educated parents about the effects of a shaken baby.

The Newcomers' Club Ladies are once again handcrafting hats for this important, month long event. Last year they were able to donate approximately 100 hats and hope to increase the donation for this year. If you would like to help, please contact either Gail Senteney or Debbie Reeves.

Get to Know Our Advertisers

They are locally owned businesses interested in providing you with quality, friendly service. Please consider them when you have a problem to solve or a repair to be done.

Help Us Please

We may occasionally need to send an important and possibly urgent notice to our membership. The quickest way to do this is by email. If you haven't given us your email address, please send it to Debbie Reeves. If you wish to be contacted this way only for important and urgent matters, we promise to honor that request. Your email will not show in the Club

October Activities



Gail Senteney - Activities Chair 801-256-0530

News items for this section should be submitted to: gsen10e@gmail.com

BOOK DISCUSSION GROUPS

DAYTIME BOOK GROUP

This group meets the fourth TUESDAY at 10:00am.

WHEN: Tuesday, October 27, 2015 at 10:00am
READING: *The Rent Collector* by Cameron Wright
REVIEWER: Susan Rommey
HOSTESS: Susan Rommey
WHERE: 1453 Uintah Circle, SLC
RSVP: Susan @ 801-583-1560



Jo Ann Albro 801-280-8977
jaalb2@aol.com

NUMBER 1 LADIES BOOK CLUB

This group meets the fourth WEDNESDAY at 7:00pm

WHEN: Wednesday, October 28, 2015 at 7:00pm
READING: *Home* by Toni Morrison
REVIEWER: Polly Hough
HOSTESS: Jody Andes
WHERE: 2059 Crystal Ave, SLC
RSVP: Jody @ 801-484-6598 or andesjody@gmail.com



Trish Mead 801-819-5225
trishrmead@gmail.com

COFFEE GROUPS

COFFEE KLATCH

Every MONDAY morning at 9:30am come in, sit down and have a cup of coffee. Join new and old friends for a morning treat and good conversation. We meet at **Einstein Brothers Bagels** at 7176 S. Union Park Avenue (1300 East) near Wal-Mart and In & Out Burger. Call for more information.

Barbara Cochran 801-273-7621
bjcochran0204@hotmail.com

COFFEE WANDERERS

This friendly woman's group meets every Wednesday from 9:30 -11:00am. We meet at a different coffee shop each week. Please come and enjoy a cup of coffee. Not only will you experience new places, but you will learn your way around Salt Lake City. Ann and Barbara are just a call or an email away.

October 7 - 7 Cups, 4670 S Holladay Blvd at corner of 2300 E and 4800 S
October 14 - Ruth's Creekside, 4170 Emigration Canyon Road SLC (www.ruthscreekside.com)
October 21 - Sunset Coffee Company, 7978 S 1300 E, Sandy
October 28 - Brunch at Chris Twite's home, 755 Sunrise Ave, SLC in the Avenues.
RSVP to Chris, 801-363-3605 to let her know what you are bringing.

Ann Charat 801-808-2043
acharat@comcast.net
Barbara Huppe 801-272-2784
bhuppe@mac.com

STITCH AND GAB

STITCH & GAB is an eclectic, fun group which meets the fourth Tuesday of each month from 1:00 – 3:00pm. We meet at different homes each month to share ideas, do some crafting and gab, gab, gab. Call Debbie for information.

WHEN: Tuesday, October 27, 2015 at 1:00pm
HOSTESS: Nancy Cygan
WHERE: 1655 East, SLC
PHONE: 630-346-6089



Debbie Reeves 801-573-5352
reevesdk@comcast.net

FOOD AND WINE GROUPS

GOURMET You don't have to be a **GOURMET** cook to enjoy this group!

But if you enjoy exploring new recipes, eating GREAT meals and meeting new friends, Gourmet is the group for you! In Gourmet, groups of people come together once a month – usually on the first Saturday - to share a good meal. As a participant of, Gourmet you can expect to be a host home (for 8 or more people) at least one time from September through June. Each month hosts get together to plan a meal. The host prepares the entrée and individuals attending the dinner bring a menu item and their own beverage. Why don't you give us a try? Contact Jody for more details.

WHEN: Saturday, October 3, 2015 at 6:30

RESERVATIONS: By September 19, 2015 to Jody

Why not give this group a try as we begin our new season with a **Hearty Appetizer Fun Fest**.

Jody and Bill Andes
801-484-6598
andesjody@gmail.com

SATURDAY NITE LIVE Once a month - usually the second Saturday - a fun group of Newcomers' gathers to enjoy a potluck meal together in a member's home. The host simply cleans house (or not!), provides dishes and utensils, opens the door, and the party begins!

WHEN: Saturday, October 10, 2015

TIME: 6:30pm

HOST: Betty Vaughn & Sophia Palmer

WHERE: Three Fountains East Clubhouse
982 Eastgate Rd

RSVP: Betty @ 801-943-5196

LIMIT: 30

Elaine Currey - 801-268-8632
budelaine@yahoo.com
Glenda Brookfield- 801-205-8452
jetomoma@gmail.com

**BRING THE WINE OF YOUR CHOICE
OR BEVERAGE OF CHOICE
THIS IS NOT A TASTING, BRING YOUR OWN**

Please call Betty @ 801-943-5196 to choose your contribution to the dinner.
Singles may choose to pair up for their contribution. Please remember to
bring what you plan to drink. Be sure your dish serves 8 - 10 people.

SMILING GRAPES

Enjoy an evening of tasting your favorite wines and hors d'oeuvres. Meet new members and make new friends. A single person may bring either an appetizer or a bottle of wine. Couples bring both.

WHEN: Friday, October 16, 2015 at 7:00pm

HOST: Pete & Carol Harmon

WHERE: 1017 Douglas Street, SLC

RSVP: Pete & Carol, 801-883-9886 or pfharmon@comcast.net
AFTER October 1, 2015

WINE REQUESTED: Domestic

LIMIT: 30

NO CALLS BEFORE OCTOBER 1, 2015

Kathie & Hugh Zumbro 801-262-7739
hzumbro@comcast.net



Members should bring enough food to share and allow wine to be consumed and still be able to drive home safely.

CONNECTIONS

Connections is an activity for those who are single. We meet monthly for breakfast/brunch, lunch or dinner. The venue, day and time are selected by the host. Participants are encouraged to invite their friends and we welcome new, single members.

Ardy Winn
801-254-9189
Catwin10@comcast.net

WHEN: October 23, 2015 at 1:00pm
WHERE: Epic Casual Dining, 707E Fort Union Blvd
HOSTESS: Nancy Anderson
RSVP: Nancy @ 801-364-6228
Call by Wednesday, October 21, 2015



OUTING WITH MARILYN AND BETTY

SUNDANCE RESORT

Join us on our LAST outing. We are doing our annual trip to Sundance. We will ride the chairlift to the top of the mountain and then do our usual hike. The view is breathtaking with all of the fall foliage. If you can't hike you can sit and enjoy the view. The chairlift opens at noon. We will have lunch about 2:00pm at Sundance. On the way home we will drive the Alpine Loop. The colors should be spectacular! Bring your friends and join us!

Marilyn Heiner 801-266-1222
Betty Allen 801-566-7722

WHEN: WEDNESDAY, October 14, 2015
WHERE: Sundance Resort
CARPOOL: 10:30am - Meet at south end of Macy's at Southtowne Mall, 106th S and State Street
COST: Chairlift, \$9:00 senior or \$12:00 adult
RSVP: Marilyn, 801-266-1222, or Betty, 801-566-7722



NOTICE: After 15 years for Marilyn and 5 years for Betty, they are retiring as of November 1, 2015. It has been a great experience and we thank everyone for your support. We would really like someone to take over this fun activity. Please call us or Gail Senteney 801-256-0530 if you are interested in helping with this event.

GENEALOGY

Meeting at the Family History Library is by arrangement with Ruth. Learn how to do your own genealogical research, enhance some research you may have already started, or find out how to use the vast genealogical resources available to the public. There are no fees.

Ruth Stone 801-299-1561
rjustynas@msn.com



October Games & Sports



Jan Meigs - Games and Sports Chair

News items for this section should be submitted to Jan Meigs 702-219-7221
ejmeigs@yahoo.com

BRIDGE

MARATHON BRIDGE

The Marathon Bridge season begins in September and ends in May. We use party bridge rotation and scoring – it is not duplicate – but you do need to be at least an advanced beginner to be comfortable. Men are welcome in this group. Bridge is played on the second Thursday of each month at 10:00 am. All games will be played at Golden Corral on 7200 S and 700 E. It costs \$14.00 per month for lunch and prizes. The group is set for now; however, we always need subs. Contact us if you would like to play. It is a fun group.

Vicky or Charles Wiseman
 801-299-0941
wisewoman@q.com

BRIDGE FOR FUN!

For singles and couples - men and women - this group is for members who play bridge just for the fun of it – all levels of players are welcome! We meet on the **third Wednesday of each month** in member's homes Everyone is welcome. Please don't hesitate to call to get in on a FUN night of Bridge.

WHEN: October 21, 2015 at 6:00pm

WHERE: Annie & Rich Brown's, 10351S Silver Mine Rd, So Jordan (801-253-5010)

Please bring appetizers. Drinks and dessert are provided by hosting members

Eating and socializing begin at 6:00pm with bridge beginning at 6:30pm

Annie Brown
 Tel: 801-253-5010
rsbjbhomeom



BUDDY BRIDGE

ATTENTION BRIDGE PLAYERS!! The flight lists were mailed out in August. Please send your scores to Yvonne Blydenstein at 8769 Snow Mt. Ct., Sandy, 84093. We have several ladies groups and a couples group. There is room for all. Entry fee is \$10.00 for the year. Contact either Carol or Yvonne to join us.

Yvonne Blydenstein 801-942-3454
off2glf@aol.com
 Carol McCormick 801-251-0411

BUNCO

Bunco is a game that requires little skill. Fun is the goal. We meet **the second Friday of the month at 11:30am** at a member's home. Our hostess provides a light lunch and dessert. We are looking for members and would love to have new players join us, no experience necessary, we will teach you the game and share the fun! Call us now and join us the second Friday in October. For info contact coordinators.

Nancy Barber 801 904-3881
nickbarber@comcast.net
 Becky Bock
jamabema@aol.com

Monday Bunco will be played on **the 4th Monday of every month.**

A hosting member will provide a light lunch after which the game and good times begin. Please call April for the current month's location. The group is full at this time but if you would like to be on the substitute list, please let April or Chris know.

April Clissold 801-277-1670
 E-Mail: pinkweek@gmail.com
 Chris Twite 801-363-3605

HAND AND FOOT

We are looking for new coordinators and hosts for the "Hand and Foot" card game. The group has historically met on the 3rd Saturday of the month at 7:00pm. Ed & Betty Green have been coordinators for several years and would like to step down. As they take a break we want to thank them for their leadership and job well done!! If you would be interested in coordinating "Hand or Foot" or have dreamed of starting a new game/activity please contact Jan Meigs at ejmeigs@yahoo.com or 702-219-7221.

MAH-JONGG

Good company, lunch and fun are what happens when this group meets Wednesdays at 11:30am at our NEW WEEKLY LOCATION, IHOP Restaurant, 4550 Highland Drive. We play until approximately 3:00pm. This is a mind provoking game which originated in China. We would love to introduce you to the game. New to the club and beginning players are welcome. For more info, call Jeanie.

Jeanie Petersen 801-944-1204
k.h.petersen@comcast.net

PINOCHLE

SATURDAY EVENING PINOCHLE

Everyone is invited to play the **second Saturday** of each month at **7:00pm**. We play with 4-5-6 at a table, depending on how many sign up. Each person is asked to bring an appetizer to share, and we take turns hosting. Call the Wednesday before for details.

Pat Hopkins - 801-571-1916
Dodi Cavaness - 801-255-1839

LADIES' AFTERNOON PINOCHLE

Pinochle begins now at 12:00noon when the hostess will serve a light dessert. Please note the time change! The group plays the fourth Thursday of each month and is open to newcomers. If you are interested in playing, please give Shirley or Sharon a call.

Shirley Zidek - 801-569-1035
Sharon Grant - 801-942-6767

GAMING UNPLUGGED

Many of us grew up playing games with families and friends. If you would like to gather once a month with like-minded people to learn, socialize, and keep your brain sharp, this is the group for you. This activity features a different board, card or brain game each month hosted in members' homes at **7:00pm on the second Friday of the month**.

WHEN: Friday, October 9, 2015 at 7:00pm
HOST: Nancy Cygan
GAME: Rummy Royal
RSVP: Nancy, 630-346-6089 or ncygan@sbcglobal.net
Please no calls or e-mails before October 1, 2015

Nancy Cygan 630-346-6089
ncygan@sbcglobal.net

HIKING

FRIDAY

Our meeting time is 9:00am. Come hike with us and enjoy the colorful fall leaves and cooler temperatures. Everyone is welcome. Hikes are easy to moderate and generally take about four hours to complete. A trail is selected for each week's hike and notification by email is sent mid-week. Hikers meet at a pre-determined location and carpool to trail head. If you want to get on the email distribution list for notification send an email to Sophia.

Sophia Palmer
Cell - 801-554-2506
sophiapalmer@comcast.net

RMSG CASUAL HIKING/WALKING

This group hikes on Fridays when weather allows. We will decide which trail as the weather indicates. Lou will send out notices a day or two before. All are welcome. If you are interested but not on the list, please contact new coordinator, Louis DeVries.

Louis & Ellen DeVries
801-553-8304
eldevries13@yahoo.co

GOLF

RMSG 9-HOLE GOLF

RMSG Golf is back! The RMSG golf group is a mixed group of men and women and all skill levels. We welcome new members. Please contact Ken for information. We start at 10:00am on Thursdays and play Glendale, Forest Dale and Glenmoor golf courses.

Ken Lessey
801-942-1160
Ken.lessey@gmail.com

NEWCOMERS' LADIES 9-HOLE GOLF

Please join us for the Fall cooler temperatures and play friendly, no stress golf while making new friends. We play Thursday mornings at different courses. Please call Jean each week for the location and a reservation.

Jean Davis 801-631-7116
jeandavisslc@gmail.com

KUED Membership Drive 11/28-12/6

Volunteer your time and be on T.V! Need Newcomers to volunteer to answer phones and take pledges (donations) at the KUED Television Station for one evening during their Annual Membership Drive. For details, see page 9.

Community Resources



Tony Milner
Executive
Director,
Family Promise

Family Promise was one of the year end charitable giving grants from Newcomers. Tony Milner is the Executive Director, one of the speakers at the June luncheon. The group has an interfaith (non-proselytizing) mission to help homeless families achieve housing stability. The unique shelter model mobilizes faith communities to take turns opening their doors to shelter, feed, and offer loving support to homeless families. Congregations commit their facilities, volunteers, and provisions on a rotating basis. In 2014, Family Promise served a total of 91 families. They also assisted 3 families into Transitional Housing. Family Promise is more than just shelter; it provides a supportive environment for change.

Lea Cotter, Community Resources
Tel: 801-930-9740 cotterbt@comcast.net



Newcomer docents are dedicated to enhancing the arts experience at the Utah Museum of Fine Arts. The museum Docent Program began in 1976, with seven beginning volunteers and the program now has approximately 120 active volunteers, including Newcomers- Jody Andes, Lynda Fletcher, Brigitte Kirk, Edwina Rosenbusch, Loren Triolo, Barbara Young and Kathie Zumbro. Docents train for nine months, two days a week. The docents are trained for the different exhibits and the art history of the displays.

These dedicated volunteers have providing tours to 4th graders from Salt Lake Schools as their primary focus. They also give special tours such as Memory tours and Art tours for book lovers.

The current exhibit is the British landscapes, which runs through December 13, 2015 and includes internationally acclaimed artists. I'm sure that the Newcomer docents would be happy to fill you in about happenings at UMFA.



Hiking Group @ White Pine Trail



Let's get started



Join us for a hike this fall, on Fridays, as the weather cools off.

Contact Sophia - 801-554-2506

Or

Louis & Ellen DeVries - 801-553-8304

We have lots of fun, chatter and lunch.

Great exercise



RMSG Casual Hiking Group



KUED Membership Drive 11/28-12/6

Volunteers are needed to answer phones and take pledges (donations) at the KUED Television Station for one evening during the Annual KUED Membership Drive. KUED is a public, non-profit television station. It receives all of its funding from contributions from large corporations and viewers like you and me who want to watch free quality programming.

A night of volunteering usually works like this: Arrive around 5 pm at KUED TV station, begin training and tour of station; depending on the timing, eat before or after the NewsHour break – dinner is provided by KUED; the evening can end as early as 8:30 pm or as late as 11 pm depending on the programming. If you would like to volunteer your time please email Sophia Palmer at sophiapalmer@comcast.net or call 801-554-2506.

Retired Members Social Group (RMSG)

SUNDAY BRUNCH

WHEN: Sunday, October 4, 2015 @ 10:00am
WHERE: Golden Corral, 655 East Fort Union Blvd, Midvale
RSVP: Rosemary Yuhasz @ 801-262-2687

RMSG Tuesday luncheon and RMSG Supper Club combined for the RMSG 25th Anniversary Celebration

TUESDAY LUNCHEON

WHEN: Tuesday, October 20, 2015
WHERE: The Olde Meeting House
TIME: Social: 11:30am Lunch: 12:00noon
WINE: Available as usual
MENU: SALAD: Harvest salad with mixed Greens, feta cheese, apples, red grapes, candied almonds.
ENTRÉE: Chicken Cordon Bleu with Rice Pilaf, served with Medley of Vegetables.
DESSERT: Lace Cookie Cup with Vanilla Ice Cream topped with Hot Fudge
COST: \$25.00
RSVP: Make checks payable to RMSG and Mail to:
Edwina Rosenbusch, 885 Three Fountains Dr,
Salt Lake City Utah 84107

ROMEOS* SATURDAY BREAKFAST

Retired Old Men Eating Out

WHEN: Saturday, October 17, 2015 @ 9:30am
WHERE: Amber Restaurant, 217 E 3300 S
(East of Century 16 Theaters)
INFO: Call Tom Rosenbusch @ 801-262-2345 or
email rosenbusch4@msn.com

RMSG held its annual summer picnic at Millcreek Terrace-Charles Stillman area up Millcreek Canyon. A great time was had by all and the weather was perfect



RMSG Officers and Contacts

Chair: Gordon Berggren 801-583-7648
gordonwb@xmission.com
Treasurer: Bob Heiner 801-266-1222
Email, RMSG News & Events:
Tom Rosenbusch rosenbusch4@msn.com
Luncheons: Phyllis McGuirk 801-261-0587
Lunch Wine: Mike Elnicky 801-571-5686
Supper Club: Betty Green 801-254-9022
Edwina Rosenbusch 801-262-2345
Day Away: Marilyn Heiner 801-266-1222
Betty Allen 801-566-7722
Casual Hiking: Louis DeVries 801-553-8304
eldevries13@yahoo.com
Sunday Brunch: Rosemary Yuhasz 801-262-2687
ROMEOS: Tom Rosenbusch 801-262-2345
Historian: Tom & Edwina Rosenbusch
801-262-2345
RMSG Liaison: Luana Chapman 801-277-5511
laserlu1926@gmail.com
Pictures: Jack McGuirk 801-261-0587
Member News: Warren Gilmour 801-641-6538
wargil97@gmail.com

October Birthdays

October 2 Arline Otto
October 9 Jerry Pawl
October 15 Arlene Edsall
October 19 Bill Andes
October 20 Jack McGuirk
October 22 Nanita Wittman
October 23 Bette Knoch



THE RMSG 25TH ANNIVERSARY JOIN US FOR THE CELEBRATION

A luncheon Celebration
October 20, 2015

Old Meeting House—Holladay, UT

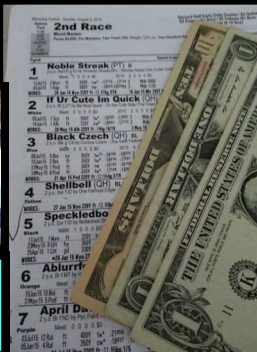
**All Newcomers and guests
are invited and welcome**

SEE OTHER PAGES IN THE OASIS FOR
INFORMATION ABOUT ACTIVITIES AND
EVENTS THAT ARE HAPPENING IN OCTOBER.

Visit our website:
newcomersclubsaltlakecity.org



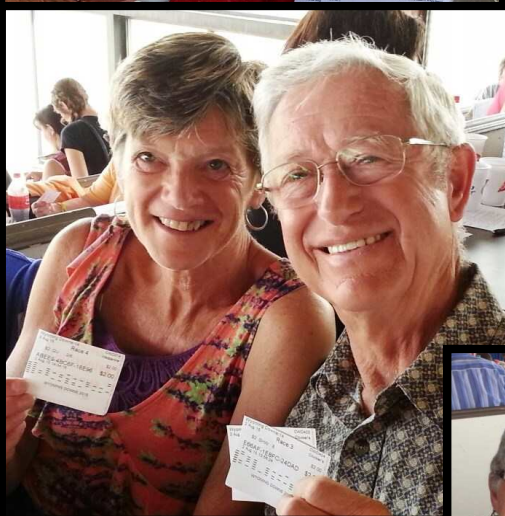
Fun at the
Races



Serious Business, Choosing the Winners



Fay Andrews
Biggest Winner
\$53.00



Thanks Jan, A wonderful day at the races!

To see pictures in color, opt to have your Oasis delivered by email.
 Notify Debbie Reeves that you would like your Oasis via email—reevesdk@comcast.net.
 Newsletters in color may also be found on the website newcomersclubsaltlakecity.org



801-201-3705

Recommended by:
Carol Beckwith

Eddie & Lili Carrillo

House Cleaning Carpet Cleaning
8 Power Washing Window Cleaning
Professional Buildings

Licensed #12619
Bonded, Insured

Holly Lane Hair & Nails

Wendy Anderson
801-278-6444

4743 South Holly Lane
Holladay, Utah 84117



MEN AND WOMEN
RECOMMENDED BY SOPHIA PALMER



Kathleen "KK" Chaplin
REALTOR®

801.671.8186

801.307.9400 (Office) 801.307.9401 (Fax)

Kathleen.Chaplin@UtahHomes.com



Owned And Operated By NRT LLC



WEST VALLEY QUALITY PAINTING

Commercial • Residential • Industrial
Interior - Exterior

Prep. No. 1 Priority
No.2 Quality Finish
Licensed & Insured

Albert
President
Home: 801.508.1880
Cell: 801.518.8265

MARY KAY®

MARILYN SILCOX

Independent Beauty Consultant

1198 Norwalk Rd.
Taylorsville, UT 84123
801-550-7185

msilcox@marykay.com
www.marykay.com/msilcox

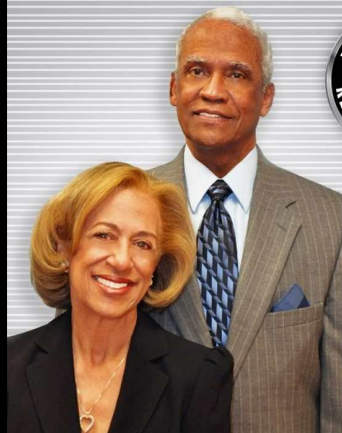


Bob's Remodeling
and "HANDYMAN SERVICE"
Electrical - Plumbing - Carpentry

1989 Falcon Hurst Circle
Sandy, UT 84092
Fax (801) 553-8792

Robert Bell - Owner
(801) 571-9993
(800) 704-9993

*Gephardt
Approved*



Karen & Cecil
TM
CECIL

(801) 518-7155

(801) 450-6704

Fax: (888) 247-9532

teamkc@karenandcecil.net

karenandcecil.net

equity
Real Estate

Cindee
STONE GROUP

Sr. Vice President of Mortgage Lending

Direct: 801-381-FUND (3863)

Fax: 801-303-9269

cindee@cindeestone.com

guaranteed **Rate**

NMLS# 273280

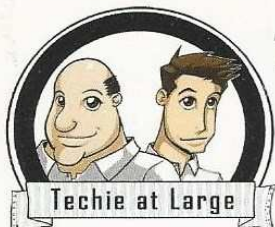


Advertise in the Oasis. Here are the details:

Business card is just a **business card**. \$20/mo; six month contract receives **seventh month** free.

¼ page ad: 3"x4" is \$40/mo; six month contract receives seventh month free.

½ page ad: 8"x5" is \$80/mo; six month contract receives seventh month free.



Techie at Large

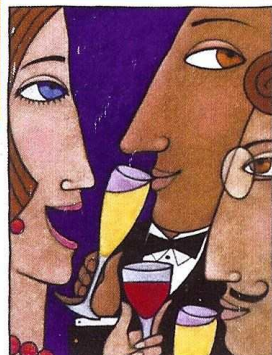
Wayne Peterson
Chief Technologist

801-268-0878 - office
801-209-1099 - cell

wayne@techieatlarge.com

Recommended by:
Gail Senteney
Lea Cotter

www.techieatlarge.com



Les Amis du Vin Utah

Friends of Wine in Utah

Maxim Holloway
board member
max.holloway@ladv-utah.org
801-918-7556

kw UTAH REALTORS
KELLERWILLIAMS

SEAN ERICKSON

Realtor

801-694-3264

seanerickson@kw.com

seanerickson.kwrealty.com

6965 Union Park Center #160
Midvale UT 84047



**COTTONWOOD
PRESBYTERIAN**

1580 East Vine Street (6100 S)
Salt Lake City, Utah 84121
tel: 801.278.4619
fax: 801.278.8801
www.cottonwoodpres.org

TOM ABBOTT
Pastor

home: 801.255.2185
tomabbott@cottonwoodpres.org

Sunday Services

8:30 a.m.

11:00 a.m.

Sunday School

9:30 a.m.

Newcomers' Club of
Salt Lake City is
grateful to the
Session for the use of
the church meeting
hall to hold our
monthly board
meetings.

THE ADOPT-A-NATIVE-ELDER PROGRAM PRESENTS



WEAVING CEREMONIAL BLANKETS

THE 26th ANNUAL NAVAJO RUG SHOW AND SALE
November 6-8, 2015 - Snow Park Lodge, Deer Valley - Park City, Utah

November 6, SPECIAL EVENT, 6pm-10pm

FRIDAY:

- Preview and sale of traditional hand-woven Navajo rugs, jewelry and crafts
- Hors d'oeuvres will be served
- Entertainment, 7:00 pm - 8:00 pm
- Live auction, 8:00 pm - 9:00 pm

ADMISSION: Adults: \$30, Children: \$10, under age 12

November 7 - 8, 10am-6pm

SATURDAY:

- Sale of rugs, jewelry and crafts
- 10:00 am - Navajo children's princess pageant
- 1:00 pm - Weaving demonstration
- 3:00 pm - Native American Grandma Idol
- 4:00 pm - Native American Grandpa Idol

ADMISSION: \$5 or canned food donation

SUNDAY:

- Sale of rugs, jewelry and crafts
- 10:00 am - Veterans ceremony
- 1:00 pm - Weaving demonstration
- 3:30 pm - Closing pow wow
- 6:00 pm - Show closes



ADOPT-A-NATIVE-ELDER
P.O. Box 3401, Park City
Utah 84060 - (435) 649-0535

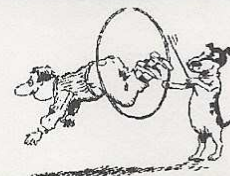
Utah Division of
Arts & Museums

This project is supported by a grant from the Utah
Arts Council, with funding from the State of Utah.

Pendleton Shavels
courtesy of Native
American Trading
Post, Salt Lake
City, Utah

www.anelder.org | www.facebook.com/adoptanativeelder

Just Leave
Everything
To Me



ONE CALL PRINTING & PROMOTIONAL ITEMS

801-699-8727

For All of Your Promotional Needs

www.justleaveeverythingtome.com

SWINYER-WOSETH DERMATOLOGY
GENERAL, SURGICAL AND COSMETIC DERMATOLOGY



DOUGLAS M. WOSETH, M.D., FAAD
LEONARD J. SWINYER, M.D., FAAD
ANGELA K. BRIMHALL, D.O., M.S.

LAURIE ELLIS, DCNP • MICHAEL R. SWINYER, P.A.-C.

1548 EAST 4500 SOUTH #202
SALT LAKE CITY, UTAH 84117

PHONE 801-266-8841 • FAX 801-266-0449

E-mail: doctor@lswinyer.com • Website: www.dwoseth.com

OFFICE HOURS BY APPOINTMENT

Membership Information

Newcomers to the Salt Lake area are eligible for membership in the Club at any time. A prospective member may attend as a guest to any three social functions, such as luncheons, parties, sports, games, etc. Membership in the Newcomers' Club is required for attendance at other functions after these three initial guest visits. The Newcomers' membership/fiscal year begins on June 1 and ends May 31 of the following year. Dues are currently \$30 payable by June 1 of the current membership year. Renewal notices are sent out in March.

If membership renewals are not received by June 1, a member is considered to be non-current. Only current members appear in the annual directory, receive monthly newsletters, and are allowed to participate in Newcomers' activities. A late fee of \$10 will be assessed to those who turn in their renewal fees late.

Dues for new members who join in March, April, or May are \$40, which pays through May 31 of the following year.

Prospective members may call the NEWCOMERS' INFORMATION LINE at 801-261-5656 and leave a message or visit us at newcomersclubsaltlakecity.org.

New membership checks are payable to Newcomers' Club and are to be sent to Gertrud Carpenter, 48 W 300 S #1105N, SLC, UT 84101

Renewal checks are payable to Newcomers' Club and are to be sent to: Debbie Reeves, 2551 E. Alta Canyon Dr., Sandy, UT, 84093.

Newsletter Information

Submissions: Please submit to appropriate group/activity chairperson. General interest items may be submitted to the Executive Board for approval. The Executive Board meets the last Tuesday of the month. Newsletters are mailed between the 10th-15th of the month for the subsequent month. Deadlines for all submissions are noted on the newsletter monthly calendar. Please contact the chairperson responsible for a particular event for more details.

Missed newsletter/change of address: Call Debbie Reeves 801-573-5352 or reevesdk@comcast.net

Advertising Inquiries: Pete Harmon, @ 801-833-9886 or pfharmon@comcast.net
Rates may be found on our website.

2015-2016 Executive Committee

Hank Merrill - President

801-572-1072 merriha@comcast.net

Karen Jurgens - First Vice President

801-571-5636 karen.jurgens@comcast.net

Don Bonnema - Second Vice President

801-261-1101 bonnema@sisna.com

Pete Harmon - Secretary

801-883-9886 pfharmon@comcast.net

Becky Bock - Treasurer

402-708-6612 jamabema@aol.com

2015-2016 General Board

Activities

Gail Senteney 801-256-0530 gsen10e@gmail.com

Advertising/Marketing

Pete Harmon 801-883-9886 pfharmon@comcast.net

Community Resources

Lea Cotter 801-930-9740 cotterbt@comcast.net

Directory

Carol Cook 801-414-8426 savvychef@aol.com

Games and Sports

Jan Meigs 702-219-7221 ejmeigs@yahoo.com

Greeter

Sharon Agan 760-419-2123 sandyagan@aol.com

Historian

Sophia Palmer 801-268-2126 sophiapalmer@comcast.net

Hospitality

Linda Hamlin 781-962-4285 linda.hamlin47@gmail.com

InterWeb Coordinator

Carol Beckwith 801-571-1415 cctravel2@ymail.com

Mailing

Christel Sysak 801-943-0316 christelsysak@gmail.com

Membership Database & Renewals

Debbie Reeves 801-573-5352 reevesdk@comcast.net

Membership/Mentor & New Members

Gertrud Carpenter 801-596-7801 paulandgertrud@gmail.com

Newsletter Editor

Carol Beckwith 801-571-1415 cctravel2@ymail.com

Parliamentarian

Julie Codell 801-572-5592 juliacodell@gmail.com

Past President

Alan Fletcher 801-268-9123 fletch9@hotmail.com

Reservations

Barbara Sund 801-915-8443 barb.sund71@gmail.com

RMSG Liaison

Luana Chapman 801-277-5511 laserlu1926@gmail.com

Social Secretary

Kathryn Miller 385-237-9205 lesliemiller34@gmail.com

**The Board meets on the first Tuesday of the month at Cottonwood Presbyterian Church, 1580 E. Vine Street (6100 S.) at 10:00 a.m.
Members are welcome to attend.**

Happy Halloween OCTOBER 2015

Sunday	Monday	Tuesday	Wednesday	Thursday	Friday	Saturday
				1 RMSG 9-Hole Golf Ladies 9-Hole Golf	2 Hiking	3 Gourmet
4 RMSG Sunday Brunch	5 Coffee Klatch	6 	7 Coffee Wanderers	8 RMSG 9-Hole Golf Ladies 9-Hole Golf Marathon Bridge	9 Hiking Gaming Unplugged Bunco	10 Sat. Nite Live Pinochle
11 	12 Coffee Klatch Columbus Day	13 Luncheon	14 Coffee Wanderers Mah-Jongg Outing with Marilyn & Betty	15 RMSG 9-Hole Golf Ladies 9-Hole Golf	16 Hiking Smiling Grapes	17 Romeos
18 	19 Coffee Klatch Oasis Notice Out For November	20 RMSG 25th Anniversary Luncheon	21 Coffee Wanderers Mah-Jongg Bridge for Fun	22 RMSG 9-Hole Golf Ladies 9-Hole Golf Ladies Pinochle	23 Hiking Connections	24
25 	26 Coffee Klatch Bunco	27 Stitch and Gab Daytime Book Club	28 Coffee Wanderers Mah-Jongg #1 Ladies Book Club	29 RMSG 9-Hole Golf Ladies 9-Hole Golf	30 Hiking	31

Please be aware that you must sign up in advance for activities. If you must cancel please be sure to inform your host as there is usually a waiting list of people to take your place.



ADDRESS SERVICE REQUESTED

PRSR STD
U.S. Postage
PAID
SALT LAKE CITY, UT
PERMIT NO. 1704

11050 Trailwood Cove
Sandy Utah 84092

Information Line (801) 261-5656
newcomersclubsaltlakecity.org

WILLOW CREEK PET • CENTER



801-942-0777

WWW.WILLOWCREEKPET.COM

- **Emergency Service 24 Hours a Day, 365 Days a Year**
- **AAHA Certified Veterinary Hospital**
- **Full Service Grooming**
- **Certified Boarding**
- **Award Winning Dog Training**



Pet Taxi- Pick Up & Drop off for all services. Also available for emergency pick-ups during business hours.



NEW CLIENT SPECIAL

RECEIVE ONE FREE HEALTH EXAM FOR YOUR PET ON YOUR FIRST VISIT

****Please present coupon at time of visit to receive discount. Limit one per client. Excludes puppy and kitten program visits. Not to be combined with any other offers.****

NOT VALID ON SUNDAY'S OR FOR EMERGENCIES. (NEWCOMERS)

GephardtApproved.com

