



# OEM Scan Engines and Devices

Deliver industry-leading features,  
durability and reliability

For full detailed specification, please refer to the Data Sheet on [zebra.com/oem](https://zebra.com/oem)

# Contents



## OEM Scan Engines

Industry-leading barcode scanning at any range



## Fixed Mount Scanners

High-volume, hands-free scanning



## Decoders

Save space and power while reducing costs with flexible decoder choices for any OEM product



## RFID



## Contact

Contact our team of specialists

## Icon Key

### Industry sectors



1D



Mobile



2D



Drone



Indoor



Healthcare



Outdoor



Gaming / Lottery



Fixed



Kiosk / Cabinets / Vending



RFID

### Scan Engine Illumination & Aiming icons



1D Linear Device



Red Illumination  
Red LED Aimer



White Illumination  
No Aimer



Red Illumination  
Red Laser Aimer



White Illumination  
Red LED Aimer



White Illumination  
Red Laser Aimer



White Illumination  
Green LED Aimer



Red Illumination  
Red Laser Aimer



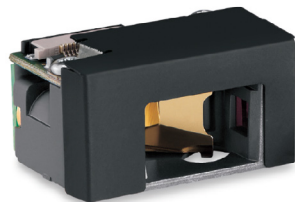
White Illumination  
Green Laser Aimer

# OEM Scan Engines

Industry-leading barcode scanning at any range



# OEM Scan Engines

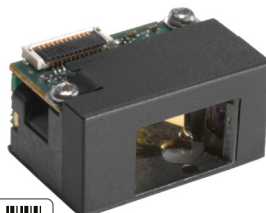


## SE950

**Miniature scan engine with optimum quality, reliability and durability**

- Ideal for enterprise and consumer use
- 1-piece scan engine
- Serial host interface
- Standard range scanning distance

[FIND OUT MORE](#)



## SE960-HP / SE965-HP

**The largest feature set in one of the smallest engines available**

- Ideal for enterprise and consumer use
- Undecoded engine or 1-piece scan engine with on-board decoder
- Serial host interface
- Mid-range scanning distance
- Adaptive scanning
- Programmable scan angle

[FIND OUT MORE](#)



## SE655

**Brings affordable 1D linear scanning to a wide variety of products**

- Ideal for consumer use
- 1-piece scan engine with on-board decoder
- Serial host interface
- Standard range scanning distance
- Low profile ideal for space-constrained products

[FIND OUT MORE](#)

### Scanning distances:

Near Range Scanning = up to 12 in. / 30.5 cm on 100% UPC | Standard Range = up to 24 in. / 61 cm on 100% UPC | Mid-Range = up to 36 in. / 91.4 cm on 100% UPC  
Advanced Range = up to 50 ft / 15.2 m on low density barcodes | Extended Range = over 50 ft / 15.2 m on low density barcodes | High Density = close range on high density barcodes

# OEM Scan Engines



## SE2100

An affordable tiny turnkey combination imager engine and illumination system

- Ideal for consumer use
- Hardware decoder separate from scan engine or scan engine with software decoder running on host device
- MIPI host interface
- OCR and image capture
- Near range scanning distance
- Low profile ideal for space-constrained products
- Resolution: 640x480 sensor

[FIND OUT MORE](#)



## SE2707

Decoded scan engine in an easy-to-integrate, cost-effective form factor

- Ideal for enterprise and consumer use
- 1-piece scan engine with on-board decoder
- Serial or USB host interface
- OCR and image capture
- Near range scanning distance
- Resolution: 640x400 sensor

[FIND OUT MORE](#)



## SE4100 / SE4107

The ultra-miniature and cost-effective 2D imaging engine

- Ideal for enterprise and consumer use
- Decoded/Undecoded:
  - *SE4100: Hardware decoder separate from scan engine or scan engine with software decoder running on host device*
  - *SE4107: 1-piece scan engine with on-board decoder*
- Host interface:
  - *SE4100: Parallel or MIPI host interface*
  - *SE4107: Serial or USB host interface*
- OCR and image capture
- Standard range scanning distance
- Low profile ideal for space-constrained products
- Resolution: 1280x960 sensor

[FIND OUT MORE](#)



## SE4700

Undecoded engine in an easy-to-integrate, cost-effective form factor

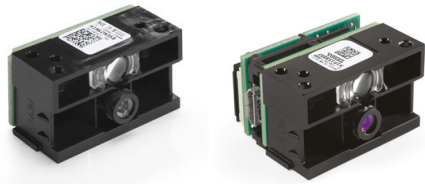
- Ideal for enterprise and consumer use
- Scan engine with software decoder running on host device
- Parallel or MIPI host interface
- OCR and image capture
- Near range scanning distance
- Low profile ideal for space-constrained products
- Resolution: 640x400 sensor

[FIND OUT MORE](#)

### Scanning distances:

Near Range Scanning = up to 12 in. / 30.5 cm on 100% UPC | Standard Range = up to 24 in. / 61 cm on 100% UPC | Mid-Range = up to 36 in. / 91.4 cm on 100% UPC  
Advanced Range = up to 50 ft / 15.2 m on low density barcodes | Extended Range = over 50 ft / 15.2 m on low density barcodes | High Density = close range on high density barcodes

# OEM Scan Engines



## SE3300 / SE3307

High-quality performance in an affordable package

- Ideal for enterprise and consumer use
- Decoded/Undecoded:
  - **SE3300:** Hardware decoder separate from scan engine or scan engine with software decoder running on host device
  - **SE3307:** 1-piece scan engine with on-board decoder
- Host interface:
  - **SE3300:** Parallel host interface
  - **SE3307:** Serial or USB host interface
- OCR, document and image capture
- Standard range and high density scanning distance
- Models: SR, HD, WA
- Resolution: 752x480 sensor

[FIND OUT MORE](#)



## SE4710

A miniature high-performance imager for mobile devices

- Ideal for enterprise and consumer use
- Hardware decoder separate from scan engine or scan engine with software decoder running on host device
- Parallel or MIPI host interface
- OCR, document and image capture
- Standard range scanning distance
- Low profile ideal for space-constrained products
- Resolution: 1280x800 sensor

[FIND OUT MORE](#)



## SE4760

Ideal for integration into mid-tier mobile devices

- Ideal for enterprise and consumer use
- Scan engine with software decoder running on host device
- MIPI host interface
- OCR, document and image capture
- Standard range scanning distance
- Low profile ideal for space-constrained products
- Resolution: 768x480 sensor

[FIND OUT MORE](#)



## SE4720 / SE4770

The ultimate in flexibility with a small design that fits anywhere

- Ideal for enterprise use
- Hardware decoder separate from scan engine or scan engine with software decoder running on host device
- Parallel or MIPI host interface
- OCR, document and image capture
- Standard range scanning distance
- Aimer:
  - **SE4720:** LED aimer
  - **SE4770:** Laser aimer
- Low profile ideal for space-constrained products
- Resolution: 1280x800

[FIND OUT MORE](#)

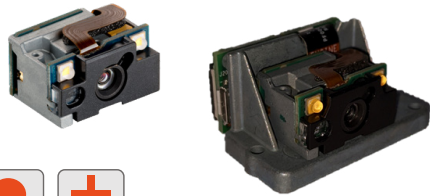
### Scanning distances:

Near Range Scanning = up to 12 in. / 30.5 cm on 100% UPC | Standard Range = up to 24 in. / 61 cm on 100% UPC | Mid-Range = up to 36 in. / 91.4 cm on 100% UPC  
Advanced Range = up to 50 ft / 15.2 m on low density barcodes | Extended Range = over 50 ft / 15.2 m on low density barcodes | High Density = close range on high density barcodes

# OEM Scan Engines

IntelliFocus™

Instant, intelligent  
barcode capture,  
near and far



## SE4750 / SE4757

Resets the bar for imagers, with unparalleled performance on many types of data

- Ideal for enterprise use
- Decoded/Undecoded:
  - **SE4750:** Hardware decoder separate from scan engine or scan engine with software decoder running on host device
  - **SE4757:** 1-piece scan engine with on-board decoder
- Host interface:
  - **SE4750:** Parallel or MIPI host interface
  - **SE4757:** Serial or USB host interface
- OCR, document and image capture, direct part marking
- Standard range, mid-range and high density scanning distance
- Models:
  - **SE4750:** SR, MR, DP
  - **SR4757:** SR
- Resolution: 1280x960

[FIND OUT MORE](#)



## SE4850

Extended range imaging engine with brighter laser aimer

- Ideal for enterprise use in specialized applications such as drones and robots
- Hardware decoder separate from scan engine or scan engine with software decoder running on host device
- MIPI host interface
- OCR, document and image capture
- Extended range scanning distance
- IntelliFocus technology
- Dual imaging systems
- Resolution: Dual 1280x800 sensors

[FIND OUT MORE](#)



## SE55

Large working range in a small package

- Ideal for enterprise use in specialized applications such as drones and robots
- Hardware decoder separate from scan engine or scan engine with software decoder running on host device
- MIPI host interface
- OCR, document and image capture
- Advanced range scanning distance
- IntelliFocus technology
- Highly visible, green laser aiming pattern that spans multiple feet at distance
- Low profile ideal for space-constrained products
- Resolution: 2688x1520 4MP sensor

[FIND OUT MORE](#)

### Scanning distances:

Near Range Scanning = up to 12 in. / 30.5 cm on 100% UPC | Standard Range = up to 24 in. / 61 cm on 100% UPC | Mid-Range = up to 36 in. / 91.4 cm on 100% UPC  
Advanced Range = up to 50 ft / 15.2 m on low density barcodes | Extended Range = over 50 ft / 15.2 m on low density barcodes | High Density = close range on high density barcodes

# Fixed Mount Scanners

High-volume, hands-free scanning





# Fixed Mount Scanners



## MS954

Ideal for designs with space constraints, such as kiosks and clinical diagnostic equipment

- Integrated or standalone solution
- Serial host interface
- Standard range scanning distance

[FIND OUT MORE](#)

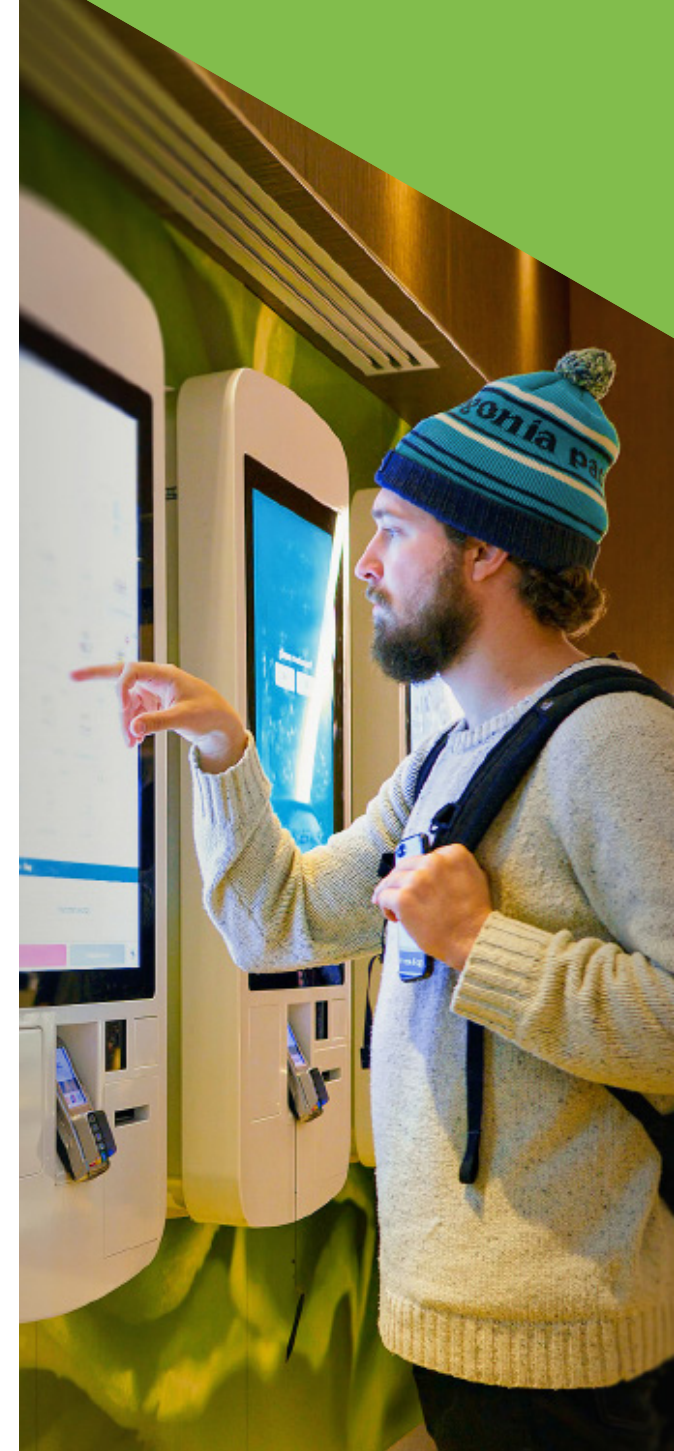


## DS457

Fast and accurate scanning in a tiny footprint that fits in the most space-constrained areas

- Integrated or standalone solution
- Serial or USB host interface
- OCR, document and image capture, direct part marking
- Standard range and high density scanning distance
- Models: SR, HD, DL, DP
- IP54
- Integrated beeper
- Trigger button

[FIND OUT MORE](#)



### Scanning distances:

Near Range Scanning = up to 12 in. / 30.5 cm on 100% UPC | Standard Range = up to 24 in. / 61 cm on 100% UPC | Mid-Range = up to 36 in. / 91.4 cm on 100% UPC  
Advanced Range = up to 50 ft / 15.2 m on low density barcodes | Extended Range = over 50 ft / 15.2 m on low density barcodes | High Density = close range on high density barcodes

# Fixed Mount Scanners



## MS4717

**Easy to integrate into a wide variety of enclosures from multiple sides**

- Ideal for integrated solutions
- USB interface
- OCR, document and image capture
- Standard range scanning distance
- Models: SR, DL
- Easy to mount: five mounting options with flat front for flush installation
- IP54
- Integrated beeper and user feedback LED

[FIND OUT MORE](#)

## MS4717 Cone / Window

**MS4717 performance with cone mount for contact scanning at the exit window**

- Ideal for integrated solutions
- USB interface
- OCR, document and image capture
- Standard range including contact scanning distance
- Models: SR, DL
- EVA compliant mounting points for universal compatibility
- IP54
- Integrated beeper and user feedback LED

[FIND OUT MORE](#)



### Scanning distances:

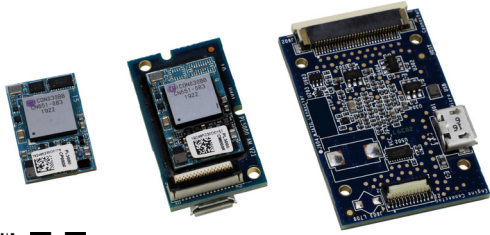
Near Range Scanning = up to 12 in. / 30.5 cm on 100% UPC | Standard Range = up to 24 in. / 61 cm on 100% UPC | Mid-Range = up to 36 in. / 91.4 cm on 100% UPC  
Advanced Range = up to 50 ft / 15.2 m on low density barcodes | Extended Range = over 50 ft / 15.2 m on low density barcodes | High Density = close range on high density barcodes

# Decoders

Save space and power while reducing costs with flexible decoder choices for any OEM product



# Decoders



## PL5000

**A model that will fit in every product design**

- Hardware decoder for use with scan engine
- OCR, document and image capture, direct part marking
- Dimensions:
  - *PL5000-A: PCB 30x16x8mm*
  - *PL5000-B: PCB 39x26x6mm*
  - *PL5000-C: BGA chip 19x12x3mm*
- Interface:
  - *PL5000-A: MIPI or parallel engine interface; Serial or USB host interface*
  - *PL5000-B: Parallel engine interface; Serial or USB host interface*
  - *PL5000-C: MIPI or parallel engine interface; Serial or USB host interface*

[FIND OUT MORE](#)



## SDL

**(Software Decode Library)**

**Save space and power while reducing costs with software decode**

- Software decoder for use with scan engine
- OCR, document and image capture, direct part marking
- Support for Android and Linux

[FIND OUT MORE](#)



## SDC

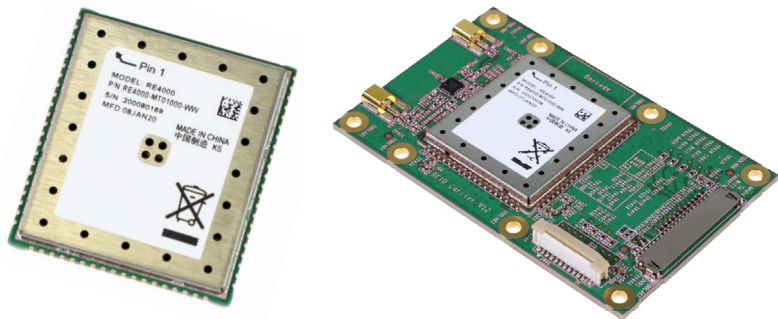
**(Software Decode for Cameras)**

**Empower off-the-shelf cameras with quality 1D and 2D scanning**

- Software decoder for use with camera
- Support for Android and Linux
- Cloud-based software licensing

[FIND OUT MORE](#)

# RFID



## RE40

Zebra's first RFID module designed to be embedded into third-party OEM equipment

- Use in fixed and mobile devices
- For enterprise and consumer use
- EPC global UHF gen 2
- SMT module or PCB mounted carrier board with dual antenna ports
- Worldwide compliance
- Dimensions:
  - *SMT module:* 27x30x3mm
  - *PCB:* 69x43x10mm

[FIND OUT MORE](#)





## Why Zebra for OEM?

With Zebra's comprehensive and proven OEM portfolio, you can:

- Deliver leading-edge technologies that increase customer loyalty
- Speed up your time to market
- Improve your profit margins
- Take time and cost out of your product development cycles
- Build your brand

From component scan engine technology that easily integrates into your design, to private labelled wireless and mobile computing solutions with your specifications and brand logo, our OEM portfolio delivers solutions your customers can count on, while reducing your costs and time-to-market.

## Contact

Be powered with Zebra OEM inside.  
Visit [www.zebra.com/oem](http://www.zebra.com/oem) or access our global contact directory at [www.zebra.com/contact](http://www.zebra.com/contact)

For full detailed specification, please refer to the Data Sheet on [zebra.com/oem](http://zebra.com/oem)