



Sustainable workplaces

A simple switch in office lighting

asimpleswitch.com

PHILIPS
sense and simplicity



“Energy costs offer plenty of scope for us to make savings. This is why we switched from T8 fluorescent lamps to Philips MASTER TL-D Eco lamps in our building. By doing this we immediately saved 10% on our energy costs and also reduced environmental pollution by cutting 25 tonnes of CO₂ emissions. One simple change makes this possible!”

Robert Strixner, Building Services Management Director, Hypovereinsbank, Standort Arabellapark, Munich, Germany





Lighting a sustainable office

Good lighting not only enables people to see, it also affects how people feel. But getting what you need to enrich office life doesn't have to mean taking from others. Philips Office Lighting provides sustainable lighting solutions that reduce energy costs, improve well-being and care for our planet. We're passionate about lighting that doesn't deplete our planet's precious resources unnecessarily.



Corum, Montpellier, France

Switch on energy savings

Approximately 40% of all the electricity used in buildings comes from lighting, making it one of the most attractive ways to save energy. So we've developed a complete range of solutions that is socially responsible, technologically advanced and pleasing to the eye. Smart and efficient lighting that helps you to sustain your company and the environment.

Lighting for a healthier workplace

Good lighting clearly contributes to the way people feel. When people feel better, they work better. And comfortable lighting that supports our natural rhythms and is suited to the task at hand increases our overall sense of well-being.

Philips Dynamic Lighting solutions bring the benefits of natural daylight indoors with subtle, changing patterns of light that keep us in tune with the world outside the office walls. Solutions that energise bodies, rejuvenate minds and ensure everyone gives their best.

Show your company in a new light

Lighting doesn't just illuminate. It can fundamentally change what we see and first impressions count. Bright or soft. Sophisticated or playful. Always responsible. Lighting can help to define your company's image and identity. Our lighting solutions are designed to inspire, uplift and make a statement. Creating maximum impact with minimum costs to you and the environment.



It's time to switch

With concerns about climate change and the effect that CO₂ emissions are having on our planet, it's natural to want to save energy. But with more and more legislation being implemented concerning the use of office lighting, you need to make the green switch fast. Philips can help you get a head start, updating you on European environmental legislation.

Energy using Products Directive

The EU has set a target to reduce total energy consumption by 20% before 2020. In order to reach this target a number of legislative directives have been developed. One of them is the Energy using Product Directive to reduce the environmental impact of energy-using products. Measures have been put in place to determine the minimal energy efficiency requirements of lighting, which automatically means that some products will be phased out according to the timetable below.

Future-proof lighting

Philips is prepared for the change over. Our office lighting solutions provide a complete range of alternatives, all of which comply with the latest legislation. What's more, we're making sure you stay well ahead by equipping all of our luminaires with the highly efficient HF electronic gear .

A move that goes well beyond the legislation, which doesn't require that until 2017. You can see the benefits now by saving up to 25% on energy costs with normal HF gear, up to 75% on energy costs with HF gear and controls.

Timetable for discontinuation of inefficient lamps

Every year per September	2009	2010	2011	2012	2013	2014	2015	2016	2017	
Frosted Incandescent lamps					Not permitted					
Clear Incandescent lamps 100W					Not permitted					
Clear Incandescent lamps 75W	Permitted				Not permitted					
Clear Incandescent lamps 60W	Permitted				Not permitted					
Clear Incandescent lamps 15W, 25W, 40W		Permitted			Not permitted					
Every year per April	2009	2010	2011	2012	2013	2014	2015	2016	2017	
TL-D standard lamps (/33, /54)	Permitted				Not permitted					
T12 lamps		Permitted			Not permitted					
Mercury vapour lamps			Permitted					Not permitted		
Fluorescent conventional gear (EM)				Permitted					Not permitted	

For more information, visit www.philips.co.uk/lighting



Be energy efficient

The Energy Performance of Building Directive (EPBD) is part of the EU framework to combat climate change by reducing energy consumption and increasing energy efficiency. Buildings have been targeted because they account for about 60% of all energy consumed in the EU. Each member state is responsible for setting its own energy efficiency targets and implementing the legislation to achieve its goals.

To comply with the directive, office buildings of more than 1,000 m² must calculate their energy consumption and performance in order to rate their building's energy efficiency. The appropriate label will be rated from low to high, as with the Energy Efficiency Label.

As the directive is still evolving, regulations will be even stricter in the future. And with the likelihood that your building's rating will also have to be on display for everyone visiting the office, improving your classification now is more important than ever.

One of the most attractive ways to conserve energy is by changing your office lighting. Not only does it account for around 40% of your electricity bills, it also requires less investment and hassle than other energy saving choices you could make. Improving your lighting is a cost effective way to help you realise energy savings of up to 80%. And research* shows that energy efficient buildings are a more attractive proposition for tenants and investors, receiving 6-9% higher rents and 16% higher selling prices. All of which results in a more valuable office building that's easier to rent or sell.

* Doing well by doing good? Green office buildings", University of Berkeley and University of Maastricht, April 2008

Lamp replacement is a simple switch solution

In the rest of this brochure we'll show you how you can achieve even more significant savings through more substantial renovations.

GLS



save
80%

MASTER LEDbulb Glow



Halogen, 220V



save
85%

MASTER LEDspot



Halogen, 12V



save
85%

MASTER LEDspot, 12V



TL-D



save
10%

MASTER TL-D Eco



TL5



save
10%

MASTER TL5 Eco



Office overview

\ 01 . Facade

\ 02 . Parking

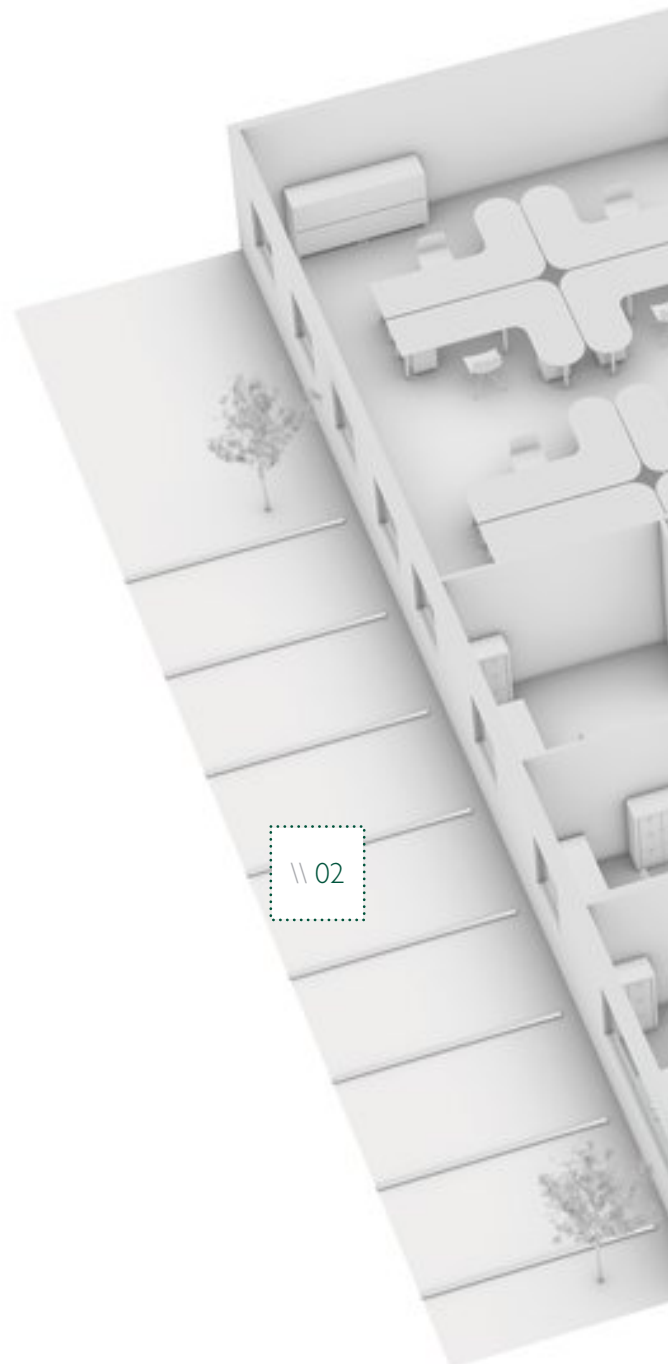
\ 03 . Reception

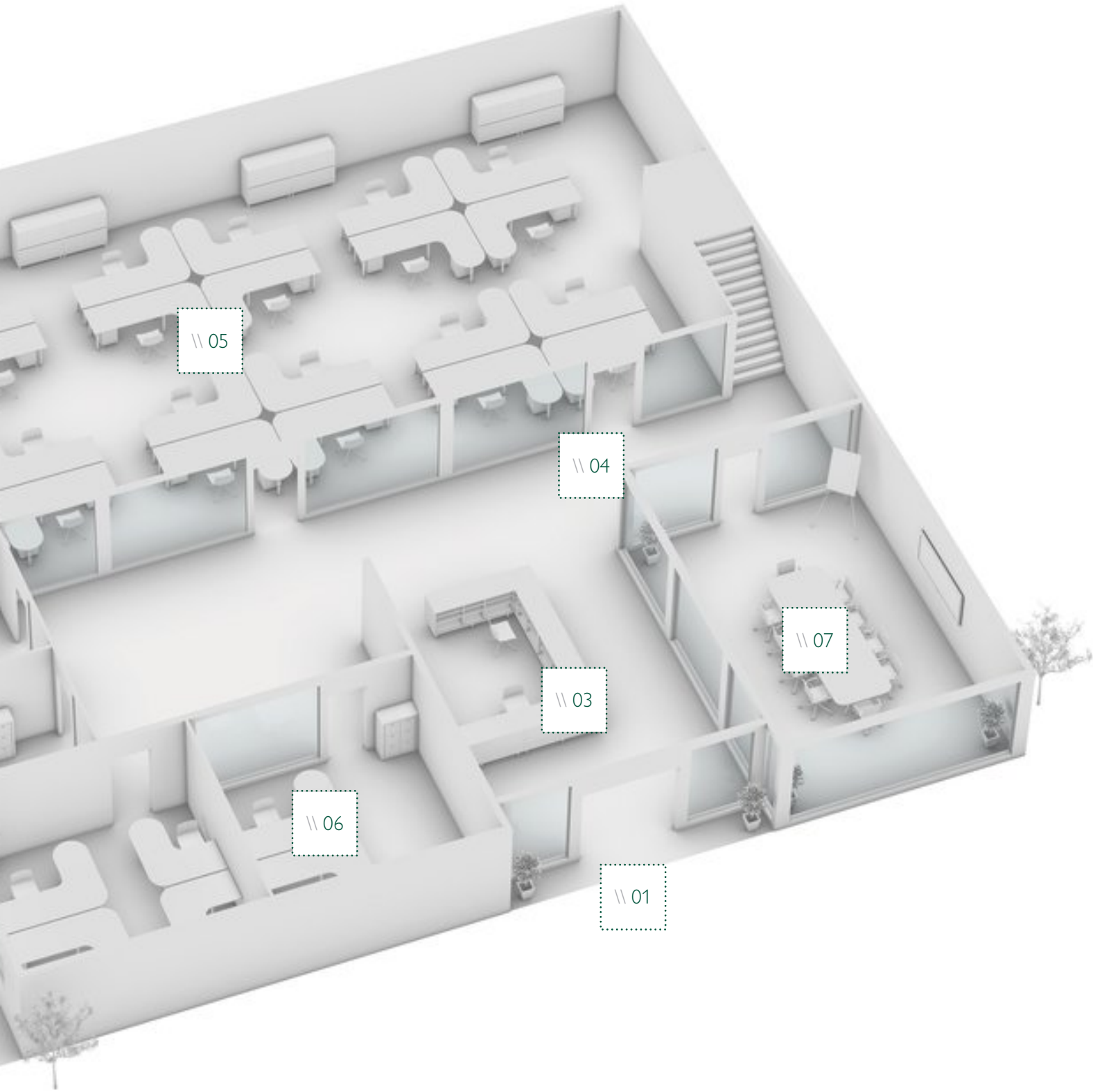
\ 04 . Corridors and circulation areas

\ 05 . Open plan office

\ 06 . Cell office

\ 07 . Meeting room





05

04

07

03

06

01

\\01 . Facade

First impressions count. That's why the facade of your office is so important. Premises that are distinctive, memorable and eye-catching can create the foundation for a strong identity that will help to differentiate you in a competitive market. Lighting is an excellent way to support your corporate image. For example, you can use an illuminated sign, logo or a particular colour to draw attention to your office. You can also highlight attractive architectural features for added impact. New lighting technologies allow you to create dynamic effects with colours and movement with minimal light spillage. So your office stands out for all the right reasons. www.philips.com/officelighting

Taihsin Bank Tower, Taipei, Taiwan



\\ 01 . ColorReach Powercore/ eW Reach Powercore

- Illuminate facades up to 240m high with tuneable white or colour-changing light
- Precise beam with no light spillage
- Easy installation, zero maintenance



\\ 02 . eWBlast Powercore / ColorBlast Powercore

- Energy-efficient and cost-effective versus traditional light sources
- High intensity white and colour-changing light
- Easy installation, easy maintenance



\\ 03 . Ledline²

- Enhance architecture with grazing light effects
- Wide range of colours, beams and forms
- Easy installation, zero maintenance



\\ 04 . ColorGraze Powercore/
eW Graze Powercore

- Enhance architecture with grazing effects in high-quality white or colour-changing light.
 - Precise beam with no light spillage
 - Easy installation, zero maintenance
-



\\ 05 . Affinium LED string

- Long-lasting and uniform signage light creates a good impression
 - Up to 50% energy saving compared to neon
 - Flexible for complex forms and structures
-

\\02 . Parking

The car park is often the first aspect of your office that visitors and employees see. The right lighting will make it feel welcoming and safe, with good visibility and no pockets of shade. Using energy-efficient light sources for outdoor parking that only requires illumination after dark, as well as indoor areas that are illuminated 24 hours a day will make a big difference to your energy bills.

www.philips.com/officelighting



Bern Parkhaus, Maastricht, the Netherlands

save
up to
70%



\\ 01 . Mini Iridium LED

- LED technology for highly energy-efficient lighting
- Lower maintenance costs
- Long lifetime

save
up to
50%



\\ 02 . Mini Iridium / Mini Koffer² / Mini Modena

- Built for the highly energy-efficient Cosmopolis system
- Beauty and efficiency with a wide variety of designs

save
up to
70%



\\ 03 . CitySpirit LED

- LED technology for highly energy-efficient lighting
- Integrates perfectly into urban architecture
- Provides excellent lighting performance



	Reference situation Marbella HPL	New solution, example Iridium Cosmo 140
Surface (m ²)	1,000	1,000
Burning hours (p/y)	4,000	4,000
Used W/m ²	1	0,43
kWh/year	4,000	1720
Energy saving		57%
CO ₂ reduction (kg) over lifetime (15 yr.)		14,364.00
Energy cost saving over lifetime (15 yr.)		£3,420.00

A typical example based on the most common scenario (energy price £0,10 Kw/h)



\\ 04 . MASTER TL-D Xtreme

- Extra long and reliable lifetime
- Fit and forget: less hassle and lower maintenance costs

03 . Reception

If you want your office to impress, the reception is the place to start. Visitors will make decisions about your company based on their initial reaction. It goes without saying that the atmosphere should be welcoming, but it should also reflect the way you do business. Lighting can help you set the mood perfectly from fun and funky to cool and corporate, enhancing the expectations of clients and customers. It also creates the right welcome for staff. www.philips.com/officelighting

Michael Graves, UK



01 . DayWave

- Unique, ultra-slim design with soft lines
- Enhances well-being by following the rhythm of daylight
- Uniform light distribution due to breakthrough optic design

save
up to
50%



02 . LuxSpace Micro*

- Highly energy-efficient, sustainable solution
- LED technology for consistent light output
- Fit and forget, easy installation, long lifetime
- 125mm cut out

save
up to
50%



03 . LuxSpace Mini

- Highly energy-efficient, sustainable solution
- LED technology for consistent light output
- Fit and forget, easy installation, long lifetime
- 150mm cut out

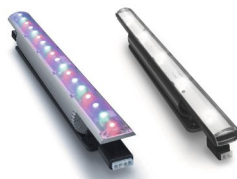


save
up to
.....
80%



\\ 04 . UnicOne

- A stylish choice with decorative appeal
- Complete design range for visual harmony
- Energy-saving luminaire is fully electronic



\\ 05 . Cove Lighting

- Light alcoves, accent areas and confined spaces
- Colour-changing, tunable white or fixed white light
- Low profile, flexible mounting and positioning

save
up to
.....
85%



\\ 06 . MASTER LEDspot

- 100% retrofit design
- Attractive warm or cool white light
- Plug & play installation
- Low energy and maintenance costs

\\04 . Corridors and circulation areas

Office corridors, stairways and other transition areas often have little or no natural daylight. Illuminating the ceilings and walls can make these spaces safer and more pleasant, and help to guide staff and visitors to their destination. And because energy costs are of paramount importance we also have presence detection solutions that switch off lighting when it's not needed, so you can switch on the savings. www.philips.com/officelighting

save
up to
.....
50%



\\ 01 . LuxSpace Micro*

- Highly energy-efficient, sustainable solution
- LED technology for consistent light output
- Fit and forget, easy installation, long lifetime
- 125mm cut out

save
up to
.....
50%



\\ 02 . LuxSpace Mini

- Highly energy-efficient, sustainable solution
- LED technology for consistent light output
- Fit and forget, easy installation, long lifetime
- 150mm cut out

save
up to
.....
50%



\\ 03 . LuxSpace Compact*

- Highly energy-efficient, sustainable solution
- LED technology for consistent light output
- Fit and forget, easy installation, long lifetime
- 198mm cut out



	Reference situation Fugato Compact FBS261 1xPL-C/4P/26W/840 HF C	New solution, example LuxSpace, OccuSwitch
Surface (m ²)	200	200
Burning hours (p/y)	4,000	4,000
Used W/m ²	6,0	3,0
kWh/year	4,800	2,408
Energy saving		50%
CO ₂ reduction (kg) over lifetime (15 yr.)		15,069.60
Energy cost saving over lifetime (15 yr.)		£3,588.00

A typical example based on the most common scenario (energy price £0,10 Kw/h)



\\ 04 . SpotLED³

- 80% energy savings compared to halogen spots
- A wide range of designs
- Dimmable



\\ 05 . UnicOne

- Enhances interior architecture
- Highly efficient beam reduces the number of fixtures
- Complete design range for visual harmony



\\ 06 . OccuSwitch

- Save 30% energy with automatic switch off when no one is around
- Versatile and reliable, works with any luminaire or lamp
- Easy and quick installation

\\05 . Open plan office

Great leaps in mobility and connectivity have transformed the way we work. Open plan offices are now far more dynamic and ergonomic environments. However, many have not been adapted to take full advantage, with entire spaces being illuminated instead of just those areas where light is required. Philips can help you respond to the changing dynamics of the open plan office with highly efficient solutions that create a comfortable, ambient light. With presence detection and daylight regulation switching lights on and off for you, you can switch on even more savings. www.philips.com/officelighting

save
up to
.....
55%



\\ 01 . OccuPlus

- Save up to 55% energy with occupancy control and daylight regulation
- Versatile and reliable, works with any luminaire or lamp
- Easy and quick installation

save
up to
.....
30%



\\ 02 . OccuSwitch

- Save 30% energy with automatic switch off when no one is around
- Versatile and reliable, works with any luminaire or lamp
- Screen off areas where activation is not required

save
up to
.....
10%



\\ 03 . MASTER TL5 Eco

- Most energy efficient, one year payback time
- Simple lamp switch solution, no disruption
- No compromise on light quality



	Reference situation IndolightTBS330, MASTER Super 80 TL-D 58W/840, conventional ballast, L1 optic	New solution, example SmartformTBS460, MASTER TL5 Eco, HF ballast, C8-VH optic, Actilume
Surface (m ²)	400	400
Burning hours (p/y)	3,000	3,000
Used W/m ²	15,4	4,8
kWh/year	18,480	5,783.4
Energy saving		69%
CO ₂ reduction (kg) over lifetime (15 yr.)		79,988.58
Energy cost saving over lifetime (15 yr.)		£19,045.00

A typical example based on the most common scenario (energy price £0,10 Kw/h)



04 . MASTER LEDbulb Glow

- 100% retrofit design
- Attractive warm or cool white light
- Plug & play installation
- Low energy and maintenance costs

\\ Reference project

Client

Audi

Project

Open plan office

Location

Neckarsulm, Germany

Light sources / Luminaires

Flatlight luminaires with MASTER TL5,

Fugato with PL-C and MASTERColour

CDM-T lamps, LightMaster Modular

More info

www.philips.com/officelighting





Audi, Neckarsulm, Germany

Audi has been writing automotive history for over 100 years. Many of their hallmark innovations have been developed and now roll off the assembly line at their location in Neckarsulm. As a global player, Audi is continuously optimising environmental factors such as energy, waste balances, soil conservation, water pollution and noise emissions. In 2008 they decided to renovate and re-organise a three-storey office building with the latest technology and modern features to give staff the very best working conditions.

How did they do it?

1,650 recessed luminaires in the offices, conference rooms and corridors were replaced with Philips Flatlight luminaires and Fugato downlights, including accent illumination for “green plant islands”. The system is managed by a LightMaster Modular (LMM) lighting control system that turns lights on and off according to time of day, daylight conditions and people presence. The modern and efficient lighting concept now provides high-quality lighting at a lower cost with a better eco-balance.

	Reference situation Recessed luminaires with TL-D lamps on EM gear	New solution, example Flatlight luminaires with MASTER TL5 on HF gear, Fugato downlight PL-C and MASTERColour CDM-T lamps, LightMaster modular
kW/year	177,905	74,560
Energy saving		58%
CO ₂ reduction (kg) over lifetime (15 yr.)		930,000
Energy cost saving over lifetime (15 yr.)		£155,017

\\ Reference project

Client

reggs

Project

Design studio

Location

Amsterdam, The Netherlands

Light sources / Luminaires

216 MASTER LEDbulb, 7W

More info

www.philips.com/officelighting





reggs, Amsterdam, The Netherlands

reggs is a design agency in Amsterdam that has a passion for people, business, innovation and the planet. The company had already integrated many energy-efficient solutions into their open plan, multi-functional office space such as energy-saving floor heating, water filtering and extra insulation for roof and glass. It goes without saying they wanted the lighting in their office to be energy-efficient too.

How did they do it?

The studio lighting was replaced with Philips MASTER LEDbulb. It has the well-known shape of an incandescent bulb, but due to the LED technology it is extremely energy-efficient. The clean white light reflects the creative personality of the company and demonstrates that sustainability, aesthetics and functionality can go hand in hand.

CO₂ reduction (kg) over lifetime (15 yr.)

1,155,000

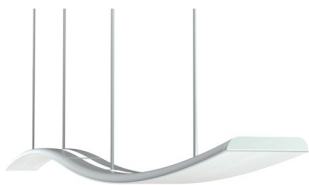
Energy cost saving over lifetime (15 yr.)

£27,500



\\06 . Cell office

Cell offices, internal rooms and work pods can bring welcome peace and privacy from the open plan office. But they often lack the natural daylight that controls our biorhythms and mood and creates a sense of wellbeing. Our research has shown that the right lighting dynamics can have the same positive effect as natural daylight. So we've designed dynamic solutions that help people stay connected with the world beyond the office walls, boosting vitality and improving concentration and performance. www.philips.com/officelighting



\\ 01 . DayWave

- Unique, ultra-slim design with soft lines
- Enhances well-being by following the rhythm of daylight
- Uniform light distribution due to breakthrough optic design

save
up to
.....
55%



\\ 02 . OccuPlus

- Save up to 55% energy with occupancy control and daylight regulation
- Versatile and reliable, works with any luminaire or lamp
- Easy and quick installation

save
up to
.....
30%



\\ 03 . OccuSwitch

- Save 30% energy with automatic switch off when no one is around
- Versatile and reliable, works with any luminaire or lamp
- Screen off areas where activation is not required



Dynamic Lighting

Dynamic Lighting is an advanced solution that brings the dynamics of daylight into the working environment. It creates a stimulating, 'natural' lighting ambience and allows individuals to control the lighting according to their personal preference. A subtle palette of light that enhances people's sense of well-being, improving concentration, motivation and performance.

Feel good, work better

Dynamic Lighting allows individuals to control the lighting according to their personal preference and the task in hand, creates the right conditions to bring out the best in everyone.

Make the switch in your office and you can benefit from all the advantages of Dynamic Lighting without increasing energy costs.

	Reference situation TBS330, TL-D 58W/840, conventional ballast, L1 optic	New solution, example SmartformTBS471 3 TL5 49W 865/827/865, HFD, AC-MLO optic, OccuSwitch
Surface (m ²)	40	40
Burning hours (p/y)	3,000	3,000
Used W/m ²	13,7	13,0
kWh/year	1,644	1,560
Energy saving		5%

A typical example based on the most common scenario (energy price £0,12 Kw/h)



\\ 04 . MASTER TL5 ActiViva

- Energises employees, improves concentration and alertness
- Optimises working conditions and performance
- Proven by scientific research



\\ 05 . ToBeTouched

- Easy to use and programme light settings
- Stylish design with a glow ring that lights up on approach
- Easy installation



\\ Reference project

Client

Rijksgedebouwendienst (Dutch Ministry of Housing and Construction)

Project

Westraven

Location

Utrecht, The Netherlands

Light sources / Luminaires

Recessed Dynamic Lighting luminaires with manual override in offices, MASTER TL5

ActiViva

More info

www.philips.com/officelighting



Westraven, Utrecht, The Netherlands

The Westraven Tower is a 23-storey office block occupied by Rijkswaterstaat, part of the Dutch Ministry of Transport, Public Works and Water Management. Although innovative when constructed in 1974, the Tower no longer met the latest standards in worker care and energy efficiency. Climate control was particularly poor and there was also a lack of natural daylight. A comprehensive programme of renovation was undertaken to address these issues.

How did they do it?

The inefficient static lighting was replaced with 5,000 Philips Dynamic Lighting luminaires fitted with MASTER TL5 ActiViva lamps. Dynamic Lighting brings the every-changing character of natural daylight into the office with seamless changes in brightness and warmth.

What was the result?

The new solution creates a stimulating ambience that has energised workers, improving their sense of well-being and enhancing performance.

“We carried out a trial with Philips in which the colour temperature and intensity of artificial lighting in my office was altered during the day to approximate natural light rhythms. It was definitely an improvement on the previous ‘static’ lighting I had.”

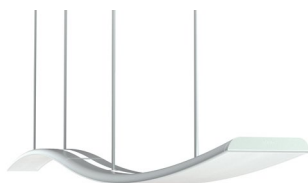
Rob Bootsman, Project director, Rijkswaterstaat, Utrecht, The Netherlands



\\07 . Meeting room

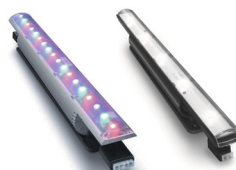
Functional and effective lighting is essential for productive meetings. By using extremely energy-efficient light sources and luminaires you can provide the right illumination in your office meeting rooms at a much lower cost. It's also possible to install flexible lighting solutions that you can adapt for specific activities, making your valuable meeting spaces even more versatile. www.philips.com/officelighting

Arup, Amsterdam, the Netherlands



\\ 01 . DayWave

- Unique, ultra-slim design with soft lines
- Enhances well-being by following the rhythm of daylight
- Uniform light distribution due to breakthrough optic design



\\ 02 . Cove lighting

- Light alcoves, accent areas and confined spaces
- Colour-changing, tunable white or fixed white light
- Low profile, flexible mounting and positioning

save
up to
.....
50%



\\ 03 . LuxSpace Micro*

- Highly energy-efficient, sustainable solution
- LED technology for consistent light output
- Fit and forget, easy installation, long lifetime
- 125mm cut out



	Reference situation 24 Zadora downlights QB5570 1xMASTERLine ES 45W 60D lamps	New solution, example LuxSpace and OccuPlus
Surface (m ²)	50	50
Burning hours (p/y)	1,500	1,500
Used W/m ²	27.8	12.1
kWh/year	2,085	904.5
Energy saving		57%
CO ₂ reduction (kg) over lifetime (15 yr.)		7,437.15
Energy cost saving over lifetime (15 yr.)		£1,771

A typical example based on the most common scenario (energy price £0,10 Kw/h)



\\ 04 . LuxSpace Mini

- Highly energy-efficient, sustainable solution
- LED technology for consistent light output
- Fit and forget, easy installation, long lifetime
- 150mm cut out



\\ 05 . OccuPlus

- Save up to 55% energy with occupancy control and daylight regulation
- Versatile and reliable, works with any luminaire or lamp
- Easy and quick installation



\\ 06 . ToBeTouched

- Easy to use and programme light settings
- Stylish design with a glow ring that lights up on approach
- Easy installation

\\ Reference project

Client

Arup

Project

Arup office

Location

Amsterdam, the Netherlands

Light sources / Luminaires

DayWave luminaire

More info

www.philips.com/officelighting





Arup, Amsterdam, The Netherlands

Arup is a global firm of designers, planners and business consultants providing a diverse range of professional services to clients around the world. The creative force behind many of the world's most innovative and sustainable designs, the company needed a lighting solution for their meeting room that would reflect their contemporary thinking on office lighting design.

How did they do it?

Philips DayWave was chosen for its inspirational design, sensual curves and dynamic ambience. The suspended design creates undulating waves of floating light with visual dynamics that are in tune with the body's natural rhythm.

What was the result?

A solution that enhances well-being as it relaxes, energises and inspires throughout the day and one that is also in harmony with Arup's ethos on lighting.



Now's the time to make the switch to lighting that saves energy and has a positive effect on the environment. Philips can help you meet your energy-efficient ambitions and create flexible, comfortable office lighting solutions designed to make people's working day more enjoyable and productive while saving energy. See how your office and employees can benefit from this new generation of lighting solutions, make the switch today.

Find out more at: www.philips.com/officelighting
or call on 0845 601 1283 or by email at
lighting.uk@philips.com





©2009 Koninklijke Philips Electronics N.V.

All rights reserved. Reproduction in whole or in part is prohibited without the prior written consent of the copyright owner. The information presented in this document does not form part of any quotation or contract, is believed to be accurate and reliable and may be changed without notice. No liability will be accepted by the publisher for any consequence of its use. Publication thereof does not convey nor imply any license under patent- or other industrial or intellectual property rights.

Date of release: September 2009 / 3222 635 67817
Printed in The Netherlands