



FAP

Faculty Associates Program

The Official Handbook 2016-2017
Office of Residential Life



Table of Contents

Places of Interest on the South 40	Page 2
Residential College Information	Page 3
Faculty Associate Program Vision & Overview	Page 4
Faculty Goals & Guidelines	Pages 5-6
Residential College Model	Page 7
Members of the Residential Colleges	Page 8
Guide to Residential Colleges	Page 9
2016-2017 Faculty Associates	Page 10
Faculty Associate Best Practices and Tips & Tricks	Pages 11-12
Line of Communication	Page 13
Commonly Used Acronyms & Calendar of Events	Page 14
Programming Ideas & Quotes	Page 15

Places of Interest on the South 40

Residential Life Center (RLC)

This is the central office that maintains and oversees the daily operations of all residential buildings on the Washington University campus.

Location: First floor of South Forty House, across from the clock tower

Phone: 935-5050

Website: <http://reslife.wustl.edu>

Cornerstone

The Center for Advanced Learning is home to educational and disability services for students.

Location: Lower level of Gregg House

Phone: 935-5970

Website: <http://cornerstone.wustl.edu>

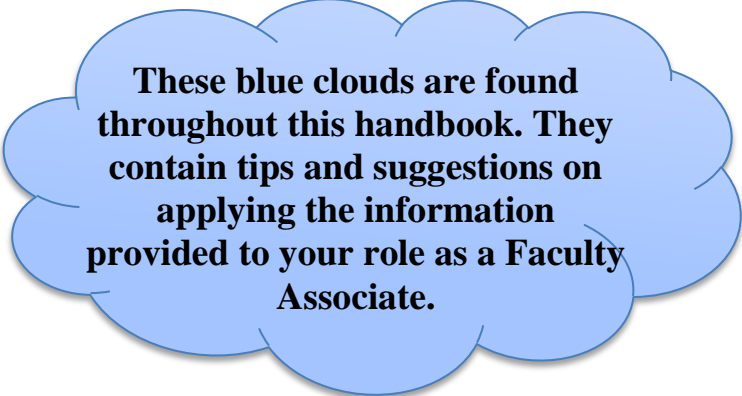
Police Department (WUPD)

University Police Officers are available 24 hours a day to respond to any emergency or to request police services.

Location: Lower level of Lien House

Phone: 935-5555

Website: <http://wupd.wustl.edu>



These blue clouds are found throughout this handbook. They contain tips and suggestions on applying the information provided to your role as a Faculty Associate.

Ursa's

A unique space for students to socialize, relax, watch TV, or play video & board games. Ursa's Fireside is a space often used for programs or meetings. Every weekend, Ursa's Nite Life, a student run programming group, uses Stageside to show sports and movies, and invites students to put on concerts and other programs.

Location: Lower level of Lien House

Website: <http://ursas.wustl.edu>

Residential Community Information

<u>Residential Community/College Names</u>	<u>Residential Community/College Director (RCD)</u>	<u>Phone</u>
Eliot Thomas Eliot & Eliot B	John Rios riosj@wustl.edu	935-3113
HIG Hitzeman, Hurd & Myers	Christian Sandoval csandov@wustl.edu	935-3111
JKL Rutledge, Dauten & Shanedling	E'Quain Rhodes equainrhodes@wustl.edu	935-3112
Lee/Beaumont (Lee/Beau) Lee & Beaumont	Laura Sandoval laura.sandoval@wustl.edu	935-4123
Liggett/Koenig (L/K) Liggett & Koenig	Kayla Kromer kaylakromer@wustl.edu	935-8913
Park/Mudd Park & Mudd	Trish Gomez tgomez@wustl.edu	935-8295
Robert S. Brookings (Brookings) Lien & Gregg	Ally Schipma aschipma@wustl.edu	935-7422
USoFo Umrath & South Forty House	Dominique Crosby Dominique.crosby@wustl.edu	935-3792
Wayman Crow Dardick & Nemerov	Shanai Sloan shanai.sloan@wustl.edu	935-7409
William Greenleaf Eliot (WGE) Danforth, Shepley, Wheeler	Raven Robinson raven.robinson@wustl.edu	935-9605
Apartments South Greenway, University Drive, Millbrook	Brittany Bynum bbynum@wustl.edu	935-3205
The Village Village East, Lopata House, House 11	Chance Rimmel chance.rimmel@wustl.edu	935-4264
Apartments North 520 Kingsland, Washington Avenue, University Terrace, The Lofts, Rosedale	Amanda Heubach amandaheubach@wustl.edu	935-0100

Program Overview

The Faculty Associate/Fellows Program emerged in response to the realization that there was a growing gap between faculty members and undergraduate students at Washington University. In addition, many faculty members wished to extend their interaction with students outside the academic realm. Today, many campuses across the nation have well-developed faculty/student interaction programs (e.g. Stanford, Georgetown, UCLA, Elon, etc.).

The Faculty Associate/Fellows Program, sponsored by the Office of Residential Life, is designed to provide opportunities for significant faculty-student interaction outside of the classroom setting. Faculty Associates (FAs) are faculty members who agree to work with Resident Advisors (RAs) and a floor of first-year students or an upperclass community during the academic year.

Working as a team, FAs and their RAs plan activities with residents designed to create a sense of community and engagement. These activities offer an opportunity for the residents to develop a significant relationship with a member of the faculty, thus making the faculty member an active member of the residential community. The program helps to integrate FAs into the residential community by allowing them to share particular interests, both academic and extracurricular, with the residents.

Faculty Fellows (FFs) are faculty members, and often, their families, who agree to live in Residential Colleges during the academic year. Fellows work with RAs, Residential College Directors (RCDs), and other FAs to put on programs for the entire Residential College. These programs engage students in an enjoyable and intellectually stimulating atmosphere, where students can feel at ease discussing their views on various topics with faculty members.

The faculty members involved in the Faculty Associates/Fellows Program are volunteers. By participating in the program, both faculty and students gain a better understanding of the rich lives we lead outside of the classroom. In turn, faculty help improve the undergraduate experience of their students, while students increase the number of quality interactions with faculty outside of academics.



Goals & Guidelines

Faculty Fellow Goals

- ❖ Maintain a high level of visibility and familiarity to residents and staff within the residential community
- ❖ Provide undergraduate residents with role models and/or mentors
- ❖ Encourage residents' use of faculty as informal resources for information, referral, or mentorship
- ❖ Increase the understanding of faculty roles and student life outside of the classroom
- ❖ Invite faculty colleagues to participate in residential community events and programs

Faculty Fellow Suggested Guidelines

- ❖ Meet regularly with the Residential College Director (RCD) to discuss the current budget, programming, and well-being of the residential community
- ❖ Check in with residential community FAs mid-semester
- ❖ Attend 1 staff meeting per month
- ❖ Lead a FYRP discussion during Bear Beginnings, if available
- ❖ Attend all or part of move-in day
- ❖ Attend the first floor meeting/convocation (bring your family!)
- ❖ Plan, program, and host 1 program a month in your residential community
 - We encourage co-programming with RAs, other FAs, and other FFs

Faculty Associate Goals

- ❖ Provide undergraduate residents with role models and/or mentors
- ❖ Increase the number of interactions students have with faculty outside of the classroom
- ❖ Increase the understanding of faculty roles and student life outside of the classroom
- ❖ Nurture the desire for learning outside of the classroom
- ❖ Meet the needs of those faculty who want more informal contact with undergraduates

Faculty Associate Suggested Guidelines

- ❖ Lead a FYRP discussion during Bear Beginnings, if available
- ❖ Attend all or part of move-in day
- ❖ Attend the first floor meeting/convocation (bring your family!)
- ❖ Plan, program, and host 2-3 programs per semester with your RAs
 - We encourage co-programming with RAs, other FAs, and other FFs

Resident Advisor Guidelines

- ❖ Serve as a facilitator between faculty and student interactions
- ❖ Advertise faculty programming as if it were your own program
- ❖ Assist faculty in the planning, programming, and hosting of their programming
- ❖ Maintain regular communication with FA

Resident Advisor Responsibilities/Requirements

- ❖ At least 1 RA from the community attend the full length of FF or FA-hosted programs
- ❖ Include faculty on all event-related communication to the residential community (weekly newsletters, program announcements, building-wide events, etc.)

The Residential College Model

Washington University adapted the Residential College model to promote living environments that foster student learning while encouraging students' personal growth and development. Each Residential College comprises two or three separate houses that form a single community. Each Residential College has a Residential College Director who works in close association with a live-in Faculty Fellow (currently in William Greenleaf Eliot, Wayman Crow, Robert S. Brookings, Park/Mudd, Umrath/South Forty House, Thomas Eliot/Eliot B, and Liggett/Koenig Colleges), Resident Advisors, College Council representatives, Washington University Student Associates, and the housekeeping staff.

Goals for the Residential College Program

- ❖ Promote a strong sense of community among students living in the college
- ❖ Develop residential communities that promote students' learning and personal development
- ❖ Foster meaningful interactions between students and faculty outside of the formal classroom setting
- ❖ Encourage traditions, customs, and rituals that are unique to each college

Meals, Parking & Access to Buildings

Meals

Each Faculty Associate is provided \$50 for the semester to eat with residents in residence hall dining facilities. We believe that meals are a perfect time to interact with residents on a more informal level.

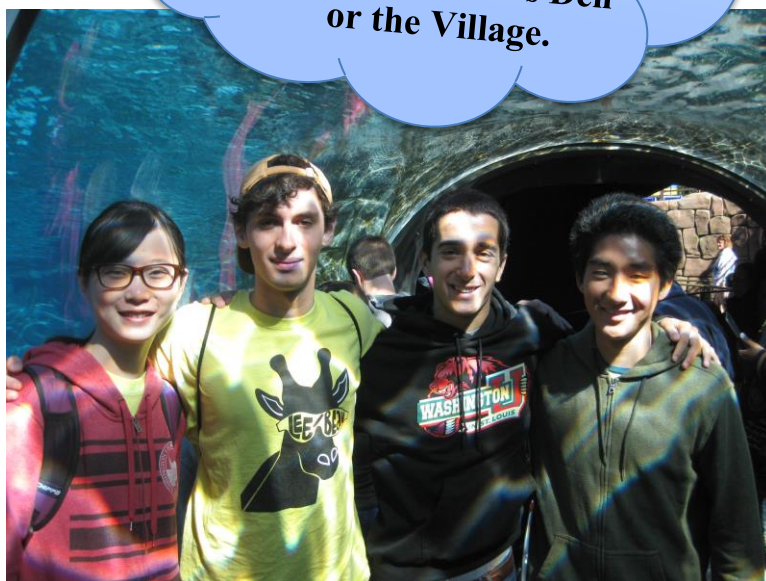
Parking

Faculty Associates can park in both of the South 40 garages with their faculty parking permits. If you do not have a parking permit, please talk to the RCD of your Residential College who will arrange a temporary pass.

Entrance to Buildings

Faculty Associates are also granted access to the building that they are paired with. The magnetic strip on the back of your ID will be activated so you can enter the building.

During the first few weeks of school, work with the RAs to plan a floor dinner or weekend brunch in Bear's Den or the Village.



Members of the Residential College

Residential Community/College Director (RCD)

This full-time professional supervises the Resident Advisors in their particular Residential College. In addition to supervising the RAs, the RCDs advise college council, chair Residential Life committees, respond to crisis situations, serve on university committees, conduct minor judicial cases, and work on other special projects as assigned.

Resident Advisor (RA)

This undergraduate student lives on a residential floor, assists residents with transition issues, provides programming, enforces policy, mediates conflict, and serves as a resource. They will serve as your primary contact with the floor and are a great resource to find out what kind of activities students would like to do.

Graduate Fellow (GF)

This graduate student is responsible for helping to enhance the academic environment of his/her respective Residential College through program development and implementation.

College Council

The College Council is a group of students that represents the Residential College in the Congress of the South Forty, our Residence Hall Association. This group often plans programs and outings for the entire Residential College.

Washington University Student Associates (WUSA)

These upperclass student leaders assist incoming first-year students during orientation and help them during their first year transition to Washington University. They also serve as mentors through the year. WUSAs, along with the RAs, can help you with programming and connecting to the floor.

Student Technology Consultant (STC)

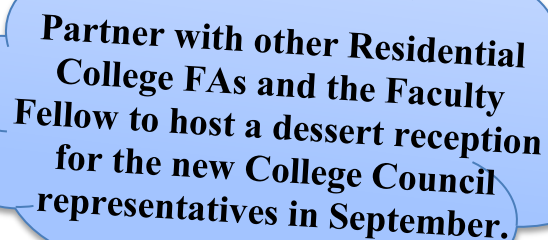
This undergraduate staff member lives in a Residential College, manages the computer clusters in the college, and is available to answer residents' questions concerning computer labs, Ethernet connections, and technology in general.

Housekeepers and Mechanics

Housekeepers clean the common areas and bathrooms of the Residential Colleges. Mechanics maintain and repair the Residential Colleges.

Residential Peer Mentors (RPM)

These upperclass students provide academic support for first-year students in chemistry, calculus, physics, and writing.



Partner with other Residential College FAs and the Faculty Fellow to host a dessert reception for the new College Council representatives in September.

A Guide to South 40 Residential Colleges

William Greenleaf Eliot (WGE)

Danforth, Shepley, Wheeler

- ❖ Houses about 190 first-year students (Danforth) and about 260 upperclass students (Wheeler & Shepley)
- ❖ Faculty Fellow – Jeffery Matthews

Wayman Crow (WayCrow)

Dardick & Nemerov

- ❖ Houses about 175 first-year students (Dardick) and 140 upperclass students (Nemerov)
- ❖ Faculty Fellows – Dedric and Ebony Carter

HIG

Hitzeman, Hurd, Myers

- ❖ Houses about 130 first-year students (Hurd) and 220 upperclass students (Myers & Hitzeman)

Lee/Beaumont (LeeBeau)

- ❖ Houses about 270 first-year students

Roberts S. Brookings (Brookings)

Lien & Gregg

- ❖ Houses about 170 first-year students (Lien) and 160 upperclass students (Gregg)
- ❖ Faculty Fellows – Deanna Barch and Todd Braver

Liggett/Koenig (LK)

- ❖ Houses about 270 first-year (Koenig) and 100 upperclass students (Liggett)
- ❖ Faculty Fellow – Scott Baker

Park/Mudd

- ❖ Houses about 190 first-year (Park) and 140 upperclass students (Mudd)
- ❖ Faculty Fellow – Dennis Barbour

Umrath/South Forty House (USoFo)

- ❖ Houses about 285 first-year students (Umrath) and about 220 upperclass students (South Forty House)
- ❖ Faculty Fellow – Kit Wellmon

JKL

Shanedling, Dauten, Rutledge

- ❖ Houses about 90 first-year students (Rutledge) and 180 upperclass students (Shanedling & Dauten)

Eliot

Thomas Eliot & Eliot B

- ❖ Houses about 160 first-year students (Eliot) and about 140 upperclass students (Eliot B)
- ❖ Faculty Fellow – Shanti Parikh



2016-2017 Faculty Associates

William Greenleaf Eliot Residential College

Danforth, Shepley, Wheeler
Danforth 1 & 2: Billy Acree
Danforth 3: Zawadi Lemayian
Danforth 4: Stan Braude
Wheeler: Carolyn Herman
Shepley : Yoon Groves
Faculty Fellow: Jeffery Matthews

Wayman Crow Residential College

Dardick & Nemerov
Dardick 1: Allan Larson
Dardick 2: Li zou & Guy Genin
Dardick 3: Charlie Kirth
Dardick 4: Simone Pflieger
Faculty Fellow: Ebony & Dedric Carter

HIG Residential College

Hitzeman, Hurd, Myers
Hitzeman: Paige LaRose
Meyers: Younasse Tarbouni
Hurd: Megan Daschbach
Hurd: Cassidy Thompson

Liggett/Koenig Residential College

Liggett & Koenig
Koenig 1: Michelle Repice
Koenig 2: Mairin Hynes
Koenig 3: Glenn MacDonald
Koenig 4: Stephen Liang
Liggett: April Bednarski
Faculty Fellow: Scott Baker

Lee/Beaumont Residential College

Lee & Beaumont
Lee 0 & 1: Terri Taylor
Lee 2: Mitch Kundel
Lee 3: Craig Smith
Beaumont 1: Ron Laue
Beaumont 2: Rebecca Clouser
Beaumont 3: Kasey Grady

Brookings Residential College

Lien & Gregg
Lien 1: Monika Weiss
Lien 2: Erik Strobl
Lien 3: Trevor Sangrey & Anika Walke
Faculty Fellows: Deanna Barch & Todd Braver

Park/Mudd Residential College

Park & Mudd
Park 1: Ke Nie
Park 2: Barbara O'Brien
Park 3: Durai Sundaramoorthi
Park 4: Judi McLean Parks
Mudd: Gabriela Szteinberg
Faculty Fellow: Dennis Barbour

USoFo Residential College

Umrath & South FortyHouse
Umrath 1: Anne Margaret Baxley
Umrath 2: Pech Colatat & Chara Rydzak
Umrath 3: Jeff Zacks & Rob Morgan
Umrath 4: Noah Cahan & Michael O'Bryan
South Forty House: Annelise Brody
Faculty Fellow: Kit Wellman

JKL Residential College

Shanedling, Dauten, Rutledge
Dauten: Deanna Benjamin
Dauten: Margaret Tucker
Rutledge: Grace Waitman
Shanedling: Douglas Flowe

Thomas Eliot Residential College

Thomas Eliot & Eliot B
Eliot 0: Kathy Kniepmann
Eliot 1: Steve Malter
Eliot 2: Iva Youkilis
Eliot 3: Jeffrey McCune
Faculty Fellow: Shanti Parikh

On-Campus Apartments

Millbrook: Emily Boyd

2016-2017 Faculty Associate Best Practices

Below are some guidelines for maximizing your experience as a Faculty Associate. The personalities of you, the building, the RA, and the residents will all play a role in determining what will be most beneficial in developing a positive faculty/student experience. You are encouraged to develop your own style and come up with more ideas on your own with the help of your RCD, RA, and the residents.

FIRST FLOOR MEETING and CONVOCATION

The first floor meeting for first-year students will be held on **Thursday, August 25th** before Convocation in the Athletic Complex at 7:30pm. Work with your RAs and RCD to determine the best time to arrive on the floor. After introducing yourself, stick around with the rest of the rescollege to learn cheers and march over to Convocation with students, RAs, WUSAs, FF, and RCD.

RESCOLLEGE DINNER

Every residential college will have a FREE dinner in college hall during the first weeks of the semester. This is a great time to have more meaningful conversations with your students after the first floor meeting, and before everyone's schedules become filled with activities and classes. And who doesn't love free food?!

PROGRAMMING

1. On page 14, you will find a calendar of major events on and around campus that we find are the most popular with our students. Many events are free, but you may also use your budget to subsidize ticketed events, or for a small meal before or after the event.
2. Create your own program! Is there something in the community you already participate in? Will you be attending a festival or event students would not typically have access to? Invite them! **Use your own interests and activities to engage with students.**
3. Your RAs, WUSAs and rescollege will also have programming throughout the year. This does not serve as a replacement for your own programs, but can be an easy way to see many students at one time.

COMMUNICATION

Expect communication from your RAs at least once a month. Your RAs may also send weekly emails to the floor that you may ask to be included on. These emails will keep you up to date with floor and campus events. While your RAs will be your first line of communication, touch base regularly with the RCD and FF as well.

Tips & Tricks

Share the Personal as Well as the Professional Side of Your Life

Your family is invited to all residential life events. We understand that the FA role often requires evening and weekend commitments, so we invite your families to become a part of your reslife family – this includes pets as well!

Be a Resource

Students can often be overloaded with academic advice throughout the day, so how can you best serve as a faculty resource? Share your story. Just as we aim to know students by name and story, they are also trying to get to know you. Every student is in a state of exploration, especially our first years. You never know who might be inspired by your previous non-profit work or gap years before graduate school!

Quality Over Quantity

An enjoyable discussion with three interested students may, in the long run, be more valuable to you and the students than having a large turnout for an event where your contact is superficial. Vary the types of activities you do in order to reach different types of residents. A small group dinner and movie viewing at your home will appeal to some residents while a large floor trip to the St. Louis Zoo or Eckert's Farm will appeal to others.

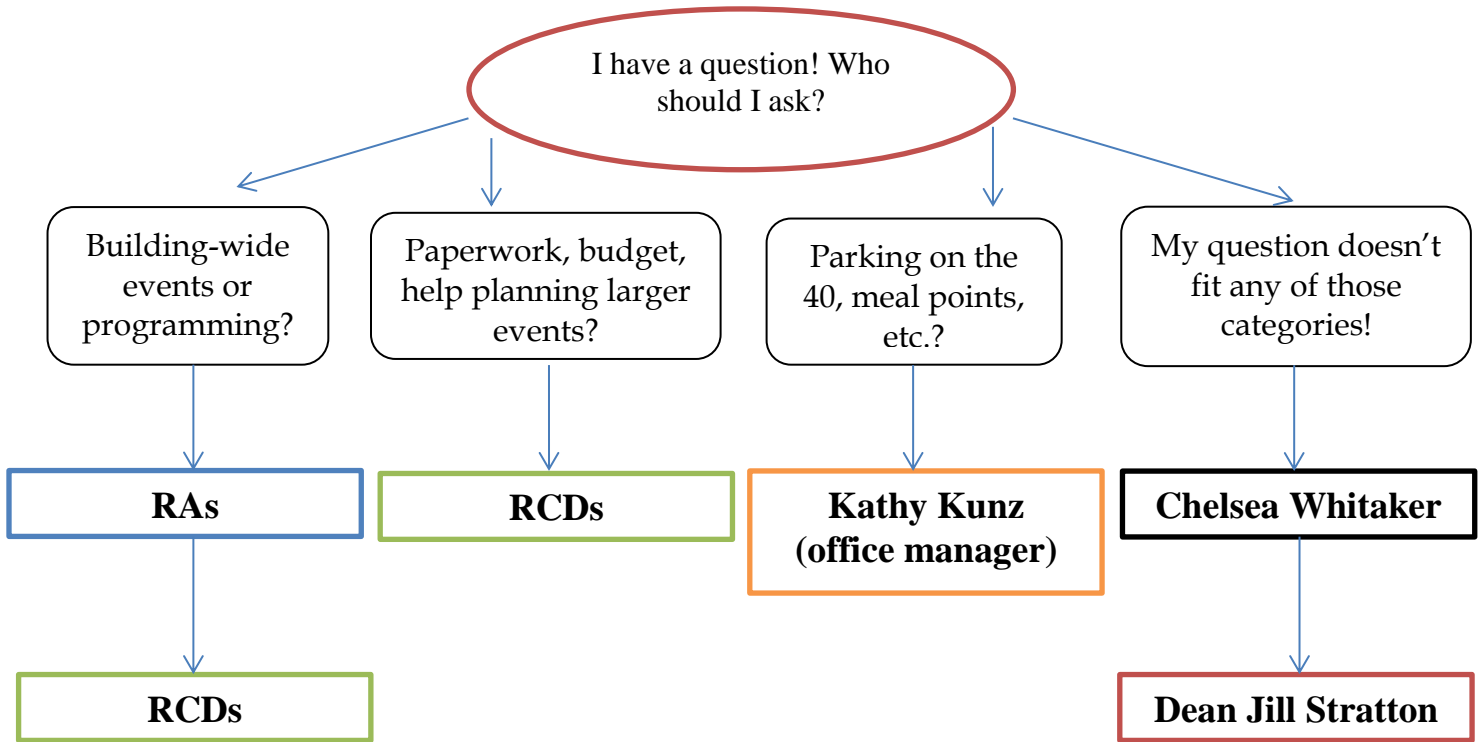
Be Patient

If one approach to making contact with the floor is not working, try another. Successful Faculty Associates are, among other things, persistent. Use the RA and/or RCD as a resource for ideas of how to engage students.

“Nothing has to be a big production; faculty and students are quite busy people. Activities that are relatively short and simple work best.”
–**Tabea Linhard & Guillermo Rosas, Brookings Faculty Fellows '11-'14.**

“Use the RAs for advice. Get to know the students through attending floor meetings and things they will be at any way and figure out once you get to know the students a little better what kind of programming would be most effective. Get them off campus! Use dogs, babies, and food. Everybody loves dogs, babies, and food!” –**Dean Jen Smith, Danforth 3 '11-'12 FA**

Line of Communication



Faculty Program Team

Dean Jill Stratton

Associate Dean of Undergraduate Residential Learning

jstratto@wustl.edu

Chelsea Whitaker

Faculty Initiatives Advisor

cdwhitaker@wustl.edu

Trish Gomez

Faculty Initiatives Liaison

tgomez@wustl.edu

Kathy Kunz

Office Manager

kkunz@wustl.edu

Commonly Used Acronyms & Calendar of Events

Acronym	Description
AAA	Asian American Association
ABS	Association of Black Students
AC	Athletic Complex
ALAS	Association of Latin American Students
ArtSci	College of Arts and Sciences
Ashoka	Indian Student Association
BD	Bear's Den
B-School	Olin School of Business
Co-RA	Co-Resident Advisor
CS40	Congress of the South 40
CSC	Catholic Student Center
EST	Emergency Support Team
FYRP	First Year Reading Program
JSU	Jewish Student Union
KWUR	WashU Radio Station
NSA	North Side Student Association
RA	Resident Advisor
RCD	Residential Community/College Director
ResCollege	Residential College
RLC	Residential Life Center
SAC	Student Admissions Committee
SHS	Student Health Services
SU	Student Union (student government)
UNL	Ursa's Nite Life
WILD	Walk-In Lay Down (campus wide concert each semester)
WUSA	Washington University Student Associate
X	Justin X. Carroll Residence Hall Honorary



Fall Semester 2016	
8/25	First-Year Students Move In
8/26	First Year Reading Program
8/27	Returning Students Move In
9/2	First Friday
9/9	First Floor Dinner
9/9	Kemper Art Museum Fall Exhibition Opens
9/16	Balloon Glow
9/19	Symphony on the 40
9/26	Brittany Packnett FYRP Lecture
10/9	Presidential Debate
10/17-18	Fall Break
10/28-30	Parent/Family Weekend
11/4-5	Diwali
11/12	Dance Marathon
11/24-27	Thanksgiving Break
12/5-16	Reading Week & Finals
12/13	Moonlight Breakfast

Spring Semester 2017	
1/13-15	Return from Break
2/3-4	Black Anthology
2/10-11	Lunar New Year Festival
3/31-4/1	Carnaval
4/5	Mx. Wash U
4/8-9	Relay for Life
4/21-23	Thurtene Carnival/Alumni Weekend
5/1-10	Reading Week & Finals

Program Ideas & Quotes

- ❖ Picnic with Balloon Glow
- ❖ Meet St. Louis Experience
- ❖ Sunday Night Dinners
- ❖ Apple or Pumpkin Picking at Eckert's Farm
- ❖ Time Management 101 Workshop
- ❖ Tuesday Teas @ 3pm in the DUC
- ❖ Movie Night
- ❖ Debate Viewing Party
- ❖ Super Bowl Viewing Party
- ❖ Cooking Class in Bear's Den
- ❖ Pumpkin Carving
- ❖ Trivia Night
- ❖ Ice Skating in Forest Park
- ❖ How to Survive College Panel
- ❖ Dinner and Current Affairs or Movie Discussion
- ❖ City Museum
- ❖ Float/Raft trip
- ❖ Cookie Decorating
- ❖ Study Break on the Floor with pets and/or family
- ❖ Museum Trips – the History Museum, SLAM, or Kemper
- ❖ See a show at a local theater directed by a PAD professor
- ❖ Trip to the Zoo
- ❖ Botanical Gardens Trip

“First year students are transitioning to a new lifestyle in school and are away from home for the first time. This can be a jarring experience and I think they are looking for qualities of home like a community. I wanted to help plan events that promote the closeness one might have left and I got involved to provide that and promote it. Showing the human side of faculty is important.” – Deanna Benjamin, Dauten FA

“It is amazing to watch the development of the freshmen over the course of their first year. The breadth of student interests and involvement outside the classroom is really remarkable- they are leading not only exceedingly full but surprisingly diverse lives.” – Dean Jen Smith,





Thank You...

...to all the Resident Advisors who contributed pictures for this handbook.

...to all of the Faculty Associates who provided quotations and suggestions for this handbook.

...to the late Dean McLeod for his incredible support of the Faculty Engagement Program.

... to Provost Holden Thorp for his continued support of the Faculty Associate & Fellow Program.

...to all the Faculty Associates & Fellows for their dedication to this program and for all the time and effort they put into enriching the experiences of our students.