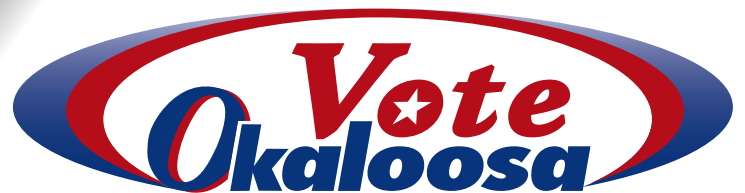


# OKALOOSA COUNTY SAMPLE BALLOT

## PRIMARY ELECTION AUGUST 30, 2016



Paul Lux, Okaloosa County Supervisor of Elections

***Your Vote Counts!***

# 3 Easy Ways to



## EARLY VOTING

**Early Voting for the August 30, 2016, Primary Election will be held:  
Saturday, August 20th - Saturday, August 27th**

**Early Voting Hours - 10am-6pm ALL Days at the following locations:**

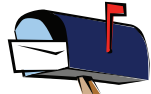
**Election Headquarters**  
302 Wilson St N Ste 102  
Crestview, FL 32536

**Okaloosa County  
Administration Building**  
1250 Eglin Pkwy  
Shalimar, FL 32579

**Crestview Public Library**  
1445 Commerce Dr  
Crestview, FL 32539

**Niceville City Hall**  
208 N Partin Dr  
Niceville, FL 32578

**Destin Community Center**  
101 Stahlman Ave  
Destin, FL 32541



## VOTE BY MAIL

**Move your polling place to your living room.** Request your ballot by contacting the Supervisor of Elections Office via telephone, email, mail, in person or by visiting our website. Vote by Mail ballots must be received by the Supervisor of Elections office by 7pm on Election Day in order to be counted. The deadline to request a Vote by Mail ballot be mailed to you is Wednesday, August 24, 2016.



## PRECINCT VOTING

**Polls are open 7am - 7pm on Election Day!  
August 30, 2016, Primary Election**

Be sure to bring a current and valid photo ID for precinct and early voting! If the photo ID does not contain your signature, an additional ID that includes your signature shall be required. Approved forms of photo ID are:

- Florida Driver's License
- Florida ID Card issued by the Department of Highway Safety & Motor Vehicles
- Military ID
- Current U.S. Passport
- Debit/Credit Cards
- Student ID
- Retirement Center ID
- Neighborhood Association ID
- Public Assistance ID
- FL Concealed Carry License
- Veteran Health ID Card
- Federal, State, County, or Local Government Employee ID Card

Dear Okaloosa County Voters,

We have prepared this Sample Ballot booklet to help guide you through the races you will be voting on in the August 30th Primary and to update you with any changes in law since the last time you voted.

This year there are only four (4) Universal Primary Contests—State Representative District 3, Sheriff, Property Appraiser, and Superintendent of Schools. These races are open to all voters regardless of party affiliation. There is no run-off for these races either, so whoever receives the highest number of votes will win on August 30th. There are also two (2) School Board races this year. We elect our School Board "at-large," so all voters vote for all members regardless of the district in which you live.

While there is a ballot style for every voter—Republican, Democrat, Libertarian, or minor/no party—not everyone will see all the races presented in this booklet. There are many closed primary races, a municipal election in Mary Esther, three (3) State legislative races that split some precincts, and several political party offices, so please make careful note of those. One (1) Constitutional Amendment will also appear on everyone's ballot.

Some important things to remember:

- **Have you moved recently?** Let us know before election day!
- **Did you bring a photo/signature ID?** You must present valid ID!
- **Do you need assistance voting?** Bring a friend or let Patriot Poll Workers assist you!

If you still have questions after looking this over, please visit our website at [www.govote-okaloosa.com](http://www.govote-okaloosa.com), call us, or feel free to e-mail me at [plux@co.okaloosa.fl.us](mailto:plux@co.okaloosa.fl.us) any time. It is my honor and privilege to serve you.

Sincerely,

**Election Headquarters**  
302 Wilson Street N., Ste 102  
Crestview, Florida 32536  
Phone: 850-689-5600  
Fax: 850-689-5644

**Branch Location**  
1250 Eglin Pkwy, Ste 103  
Shalimar, FL 32579  
Phone: 850-651-7272

  
Find Us on Facebook  
[facebook.com/OkaloosaCountySupervisorOfElections](https://www.facebook.com/OkaloosaCountySupervisorOfElections)  
Find Election Information on our website.  
[www.GoVote-Okaloosa.com](http://www.GoVote-Okaloosa.com)

## FLORIDA IS A CLOSED PRIMARY STATE



Florida is a closed primary state. Typically, only the two major parties (Republican and Democratic) have primaries, which are nominating elections, and you have to be registered as a member of the party in whose primary you wish to vote.

Pursuant to a change in election law, registered minor parties are eligible to have primaries also. In fact, there is a Libertarian primary this year. However, all registered voters, regardless of party, vote in a primary on the nonpartisan races, such as School Board members, Judges, and referenda. The only exception to the closed primary is for a Universal Primary Contest.

## UNIVERSAL PRIMARY CONTESTS

You always get to vote on who holds office. By State Constitutional amendment in 1998, Florida created the Universal Primary Contest. If only people from one political party sign up to run for any particular office, then every voter gets a chance to vote in that race to decide who the winner will be - regardless of the voter's political party.

## PROVISIONAL BALLOTS

In order to ensure that no eligible voter is turned away, the law provides a method of voting for a person whose eligibility may be questioned at the polls. If no final determination can be made at the time of voting, or if the voter disagrees with a determination of eligibility, he or she may vote a provisional ballot. This ballot is secured in an envelope and the Canvassing Board will determine whether it is to be counted after research is completed by the elections office.

In addition, the voter has until 5 p.m. on the second day after the election to provide any further evidence he or she may have to prove his or her eligibility. All provisional voters are given written notice of free access to information on the disposition of his or her own provisional ballot.

**Please note: A voter who fails to bring photo and signature ID when voting is required by law to vote a provisional ballot. However, no further proof of eligibility is required by the voter. The voter's signature will be compared to the signature on file and counted if it matches. Voting by affirmation for lack of ID has been repealed.**

## SIGNATURE UPDATE

Has your signature changed from

A stylized, cursive signature that reads "John Hancock".

to this?

A simplified, cursive signature that appears to be "John".

If so, please update your signature at either of our offices. Any voter who needs to update his or her signature must do so before the August 15, 2016, Canvassing Board meeting.

**REPUBLICAN Ballot for Precincts 1-52**  
**This composite ballot is for Republican voters county-wide.**

**SAMPLE**

**Official Republican Ballot**  
**August 30, 2016 Primary Election**  
**Okaloosa County, Florida**

**SAMPLE**

- **Instructions: To vote, fill in the oval completely (●) next to your choice. Use only the marking device provided or a blue or black pen.**
- **If you make a mistake, ask for a new ballot. Do not cross out or your vote may not count.**

United States Senator (Vote for 1)	Sheriff Universal Primary Contest (Vote for 1)	Nonpartisan Offices	
<input type="radio"/> Carlos Beruff REP <input type="radio"/> Ernie Rivera REP <input type="radio"/> Marco Rubio REP <input type="radio"/> Dwight Mark Anthony Young REP	<input type="radio"/> Larry Ashley REP <input type="radio"/> Brian Cokonougher REP	<b>School Board District 2</b> (Vote for 1) <input type="radio"/> Dewey E. Destin <input type="radio"/> Mark Williams	
	<b>Property Appraiser Universal Primary Contest</b> (Vote for 1) <input type="radio"/> Mack Busbee REP <input type="radio"/> Janet Fugate REP <input type="radio"/> John Holguin REP	<b>School Board District 4</b> (Vote for 1) <input type="radio"/> Tim Bryant <input type="radio"/> Charles Cawthon	
<b>Representative in Congress District 1</b> (Vote for 1) <input type="radio"/> Rebekah Johansen Bydlak REP <input type="radio"/> Cris Dosev REP <input type="radio"/> Greg Evers REP <input type="radio"/> Gary Fairchild REP <input type="radio"/> Brian Frazier REP <input type="radio"/> Matt Gaetz REP <input type="radio"/> Mark Wichern REP <input type="radio"/> James Zumwalt REP	<b>Superintendent of Schools Universal Primary Contest</b> (Vote for 1) <input type="radio"/> Mary Beth Jackson REP <input type="radio"/> Marline Van Dyke REP	<b>No. 4 Constitutional Amendment Article VII, Sections 3 and 4 Article XII, Section 34</b> <b>Solar Devices or Renewable Energy Source Devices; Exemption From Certain Taxation and Assessment</b> Proposing an amendment to the State Constitution to authorize the Legislature, by general law, to exempt from ad valorem taxation the assessed value of solar or renewable energy source devices subject to tangible personal property tax, and to authorize the Legislature, by general law, to prohibit consideration of such devices in assessing the value of real property for ad valorem taxation purposes. This amendment takes effect January 1, 2018, and expires on December 31, 2037.	
<b>(A) State Senator District 1 race will appear here. Only voters in District 1 will have this race.</b>	<input type="radio"/> Thomas Gerald Cannon Jr REP <input type="radio"/> Graham Fountain REP <input type="radio"/> James Walker REP	<b>Party Offices</b> <b>State Committeeman</b> (Vote for 1) <input type="radio"/> Steve Czonstka REP <input type="radio"/> Benjamin J. Iannucci III REP <input type="radio"/> Ernest J. Sordelet Jr REP	
<b>(B) State Representative District 3 race will appear here. Only voters in District 3 will have this race.</b>	<b>State Committeewoman</b> (Vote for 1) <input type="radio"/> Sandra Atkinson REP <input type="radio"/> Grace Ruud-Papadopoulos REP	<input type="radio"/> Yes <input type="radio"/> No	
<b>(C) State Representative District 4 race will appear here. Only voters in District 4 will have this race.</b>			

**(D) Mary Esther City Council race will appear here. Only voters in Precinct 21 will have this race.**

**REPUBLICAN Ballot for Precincts 1-52**  
**This composite ballot is for Republican voters county-wide.**

**SAMPLE**

**Official Republican Ballot**  
**August 30, 2016 Primary Election**  
**Okaloosa County, Florida**

**SAMPLE**

**(A) State Senator  
District 1  
(Vote for 1)**

**Only voters in the following precincts will have this race: part of 3, part of 4, part of 10, part of 17, part of 29, all of 34, part of 38, part of 42, part of 45, and all of 47.**

- Doug Broxson REP
- Mike Hill REP

**(B) State Representative  
District 3  
Universal Primary Contest  
(Vote for 1)**

**Only voters in the following precincts will have this race: all of 1, 2, part of 3, part of 4, all of 5, 6, part of 7, part of 8, part of 13, and all of 51.**

- J.Huston Walters REP
- Jayer Williamson REP

**OR**

**(C) State Representative  
District 4  
(Vote for 1)**

**Only voters in the following precincts will have this race: part of 3, part of 4, part of 7, part of 8, all of 9-12, part of 13, all of 14-50, and all of 52.**

- Laurie Bartlett REP
- Wayne R. Harris REP
- Armand Izzo REP
- Mel Ponder REP
- Jonathan Michael Tallman REP

**(D) Mary Esther City Council  
City of Mary Esther  
(Vote for up to 2)**

**Only voters in Precinct 21 will have this race.**

- Charlotte M. McKamy
- King Molder
- Timothy Panzer
- Victor O. Udechukwu

**DEMOCRATIC Ballot for Precincts 1-52**  
**This composite ballot is for Democratic voters county-wide.**

**SAMPLE**

**Official Democratic Ballot**  
**August 30, 2016 Primary Election**  
**Okaloosa County, Florida**

**SAMPLE**

- **Instructions: To vote, fill in the oval completely (●) next to your choice. Use only the marking device provided or a blue or black pen.**
- **If you make a mistake, ask for a new ballot. Do not cross out or your vote may not count.**

<b>United States Senator</b> (Vote for 1)	<b>Nonpartisan Offices</b>	<b>A</b> <b>State Representative District 3</b> <b>Universal Primary Contest</b> (Vote for 1)
<input type="radio"/> Roque "Rocky" De La Fuente DEM	<b>School Board District 2</b> (Vote for 1)	<input type="radio"/> J. Huston Walters REP
<input type="radio"/> Alan Grayson DEM	<input type="radio"/> Dewey E. Destin	<input type="radio"/> Jayer Williamson REP
<input type="radio"/> Pam Keith DEM	<input type="radio"/> Mark Williams	
<input type="radio"/> Reginald Luster DEM	<b>School Board District 4</b> (Vote for 1)	<b>B</b> <b>Precinct Committeewoman Precinct 10</b> (Vote for up to 2)
<input type="radio"/> Patrick Murphy DEM	<input type="radio"/> Tim Bryant	<input type="radio"/> Brittany Nicole Bryson DEM
<b>A</b> <b>State Representative District 3 race will appear here. Only voters in Precincts 1, 2, part of 3, part of 4, all of 5, 6, part of 7, part of 8, part of 13, and all of 51 will have this race.</b>	<input type="radio"/> Charles Cawthon	<input type="radio"/> Carol A. "Cay" Burton DEM
	<b>D</b> <b>Mary Esther City Council race will appear here. Only voters in Precinct 21 will have this race.</b>	<input type="radio"/> Naomi Lauretta Hardison DEM
<b>Sheriff Universal Primary Contest</b> (Vote for 1)		<b>C</b> <b>Precinct Committeeman Precinct 40</b> (Vote for 1)
<input type="radio"/> Larry Ashley REP	<input type="radio"/> John C. Holt DEM	
<input type="radio"/> Brian Cokonougher REP	<b>No. 4 Constitutional Amendment Article VII, Sections 3 and 4 Article XII, Section 34</b>	<input type="radio"/> Robert A. Howes DEM
<b>Property Appraiser Universal Primary Contest</b> (Vote for 1)	<b>Solar Devices or Renewable Energy Source Devices; Exemption From Certain Taxation and Assessment</b>	<b>C</b> <b>Precinct Committeewoman Precinct 40</b> (Vote for 1)
<input type="radio"/> Mack Busbee REP	Proposing an amendment to the State Constitution to authorize the Legislature, by general law, to exempt from ad valorem taxation the assessed value of solar or renewable energy source devices subject to tangible personal property tax, and to authorize the Legislature, by general law, to prohibit consideration of such devices in assessing the value of real property for ad valorem taxation purposes. This amendment takes effect January 1, 2018, and expires on December 31, 2037.	<input type="radio"/> Ellen M. Holt DEM
<input type="radio"/> Janet Fugate REP		<input type="radio"/> Jocelyn Howes DEM
<input type="radio"/> John Holguin REP		<b>D</b> <b>Mary Esther City Council City of Mary Esther</b> (Vote for up to 2)
<b>Superintendent of Schools Universal Primary Contest</b> (Vote for 1)		<input type="radio"/> Charlotte M. McKamy
<input type="radio"/> Mary Beth Jackson REP		<input type="radio"/> King Molder
<input type="radio"/> Marline Van Dyke REP		<input type="radio"/> Timothy Panzer
<b>Party Offices</b>		<input type="radio"/> Victor O. Udechukwu
<b>B</b> <b>Precinct Committeewoman Precinct 10 race will appear here only for voters in Precinct 10.</b>	<input type="radio"/> Yes	
	<input type="radio"/> No	
<b>C</b> <b>Precinct Committeeman and Committeewoman Precinct 40 will appear here only for voters in Precinct 40.</b>		

# LIBERTARIAN Ballot for Precincts 1-52

**This composite ballot is for Libertarian voters county-wide**

SAMPLE

**Official Libertarian Ballot  
August 30, 2016 Primary Election  
Okaloosa County, Florida**

SAMPLE

- **Instructions: To vote, fill in the oval completely (●) next to your choice. Use only the marking device provided or a blue or black pen.**
- **If you make a mistake, ask for a new ballot. Do not cross out or your vote may not count.**

<p><b>United States Senator</b> (Vote for 1)</p> <p><input type="radio"/> Augustus Invictus      LPF</p> <p><input type="radio"/> Paul Stanton              LPF</p>	<p><b>School Board District 4</b> (Vote for 1)</p> <p><input type="radio"/> Tim Bryant</p> <p><input type="radio"/> Charles Cawthon</p>	
<p><b>State Representative District 3</b> <b>Universal Primary Contest</b> (Vote for 1)</p> <p style="color: red; font-weight: bold;">State Representative District 3 race will appear <i>only</i> in Precincts 1, 2, part of 3, part of 4, all of 5, 6, part of 7, part of 8, part of 13, and all of 51.</p> <p><input type="radio"/> J. Huston Walters      REP</p> <p><input type="radio"/> Jayer Williamson      REP</p>	<p><b>Mary Esther City Council</b> <b>City of Mary Esther</b> (Vote for up to 2)</p> <p style="color: red; font-weight: bold;">Mary Esther City Council race will appear <i>only</i> in Precinct 21.</p> <p><input type="radio"/> Charlotte M. McKamy</p> <p><input type="radio"/> King Molder</p> <p><input type="radio"/> Timothy Panzer</p> <p><input type="radio"/> Victor O. Udechukwu</p>	
<p><b>Sheriff</b> <b>Universal Primary Contest</b> (Vote for 1)</p> <p><input type="radio"/> Larry Ashley              REP</p> <p><input type="radio"/> Brian Cokonougher      REP</p>	<p><b>No. 4</b> <b>Constitutional Amendment</b> <b>Article VII, Sections 3 and 4</b> <b>Article XII, Section 34</b></p>	
<p><b>Property Appraiser</b> <b>Universal Primary Contest</b> (Vote for 1)</p> <p><input type="radio"/> Mack Busbee              REP</p> <p><input type="radio"/> Janet Fugate              REP</p> <p><input type="radio"/> John Holguin              REP</p>	<p><b>Solar Devices or Renewable Energy Source Devices; Exemption From Certain Taxation and Assessment</b></p> <p>Proposing an amendment to the State Constitution to authorize the Legislature, by general law, to exempt from ad valorem taxation the assessed value of solar or renewable energy source devices subject to tangible personal property tax, and to authorize the Legislature, by general law, to prohibit consideration of such devices in assessing the value of real property for ad valorem taxation purposes. This amendment takes effect January 1, 2018, and expires on December 31, 2037.</p>	
<p><b>Superintendent of Schools</b> <b>Universal Primary Contest</b> (Vote for 1)</p> <p><input type="radio"/> Mary Beth Jackson      REP</p> <p><input type="radio"/> Marline Van Dyke      REP</p>	<p><input type="radio"/> Yes</p> <p><input type="radio"/> No</p>	
<p><b>Nonpartisan Offices</b></p>		
<p><b>School Board District 2</b> (Vote for 1)</p> <p><input type="radio"/> Dewey E. Destin</p> <p><input type="radio"/> Mark Williams</p>		

**NONPARTISAN Ballot for Precincts 1-52**  
**This composite ballot is for voters with no party**  
**or minor party affiliation county-wide.**

**SAMPLE**

**Official Nonpartisan Ballot**  
**August 30, 2016 Primary Election**  
**Okaloosa County, Florida**

**SAMPLE**

- **Instructions: To vote, fill in the oval completely (●) next to your choice. Use only the marking device provided or a blue or black pen.**
- **If you make a mistake, ask for a new ballot. Do not cross out or your vote may not count.**

<b>State Representative District 3 Universal Primary Contest (Vote for 1)</b>	<b>School Board District 4 (Vote for 1)</b>
<p><b>State Representative District 3 race will appear <i>only</i> in Precincts 1, 2, part of 3, part of 4, all of 5, 6, part of 7, part of 8, part of 13, and all of 51.</b></p>	<input type="radio"/> Tim Bryant <input type="radio"/> Charles Cawthon
<input type="radio"/> J. Huston Walters      REP <input type="radio"/> Jayer Williamson      REP	<b>Mary Esther City Council City of Mary Esther (Vote for up to 2)</b>
	<p><b>Mary Esther City Council race will appear <i>only</i> in Precinct 21.</b></p> <input type="radio"/> Charlotte M. McKamy <input type="radio"/> King Molder <input type="radio"/> Timothy Panzer <input type="radio"/> Victor O. Udechukwu
<b>Sheriff Universal Primary Contest (Vote for 1)</b>	<b>No. 4 Constitutional Amendment Article VII, Sections 3 and 4 Article XII, Section 34</b>
<input type="radio"/> Larry Ashley      REP <input type="radio"/> Brian Cokonougher      REP	<p><b>Solar Devices or Renewable Energy Source Devices; Exemption From Certain Taxation and Assessment</b></p> <p>Proposing an amendment to the State Constitution to authorize the Legislature, by general law, to exempt from ad valorem taxation the assessed value of solar or renewable energy source devices subject to tangible personal property tax, and to authorize the Legislature, by general law, to prohibit consideration of such devices in assessing the value of real property for ad valorem taxation purposes. This amendment takes effect January 1, 2018, and expires on December 31, 2037.</p>
<b>Property Appraiser Universal Primary Contest (Vote for 1)</b>	<input type="radio"/> Yes <input type="radio"/> No
<input type="radio"/> Mack Busbee      REP <input type="radio"/> Janet Fugate      REP <input type="radio"/> John Holguin      REP	
<b>Superintendent of Schools Universal Primary Contest (Vote for 1)</b>	
<input type="radio"/> Mary Beth Jackson      REP <input type="radio"/> Marline Van Dyke      REP	
<b>Nonpartisan Offices</b>	
<b>School Board District 2 (Vote for 1)</b>	
<input type="radio"/> Dewey E. Destin <input type="radio"/> Mark Williams	



## HOW TO MARK A PAPER BALLOT (OPTICAL SCAN)



## OTHER IMPORTANT VOTING INFORMATION

### IDENTIFICATION

Voter Information cards are not a valid form of identification when voting. Be sure to bring a current and valid photo ID for precinct and early voting. If the photo ID does not contain your signature, an additional ID that includes your signature shall be required. If you do not bring any ID, you will be allowed to vote; however, you will be asked to vote a provisional ballot.

Approved forms of photo ID are:

- Florida Driver's License
- Florida ID Card issued by the Department of Highway Safety & Motor Vehicles
- Military ID
- Current U.S. Passport
- Debit/Credit Cards
- Student ID
- Retirement Center ID
- Neighborhood Association ID
- Public Assistance ID
- FL Concealed Carry License
- Veteran Health ID Card
- Federal, State, County, or Local Government Employee ID Card

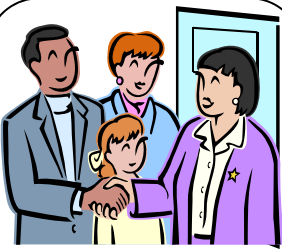
### ADDRESS CHANGE

If you have moved recently and have a new address other than the one in the poll register, you will be asked to see the Clerk to determine if you are in the correct precinct. It is a third-degree felony to vote in a precinct other than which you live. If you would like to verify your address with our office before Election Day, just call, email us, or use our online Voter Lookup Tool.

### NEED ASSISTANCE AT THE POLLS?

Need assistance to vote? You can bring a friend or family member, but our Patriot Poll Workers are well trained and qualified to assist you. All polling places are accessible to voters with special needs. AutoMARK ballot marking devices are available for voters with disabilities to vote secretly and independently.

## WHAT TO EXPECT AT THE POLLS



### THE BAILIFF

I'm a special deputy who will greet you at the door and provide assistance when needed. I'll remind you to silence your cell phone and to have your ID ready!



### THE GREETER

I'm especially helpful to first-time voters, giving ballot demonstrations and answering most questions. I even have special ballots for the kids, too!



### EVID INSPECTOR

I have the poll register with your name in it. I'll ask for your ID and check your signature before giving you a Voting Pass. I should never tell you that you can't vote!



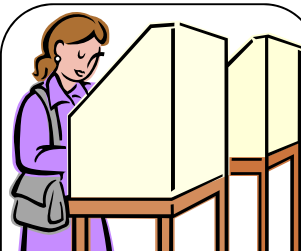
### BALLOT INSPECTOR

I take your Voting Pass and give you your ballot in a secrecy folder. Then I'll point your way to the voting booth to mark your ballot.



### THE AUTOMARK

The law requires that each precinct have a voting machine for voters with special needs. It helps voters who have visual or other impairments to vote independently.



### VOTE!

Vote your secret ballot in the booth provided. **If you make a mistake, please ask for a new ballot!** All done? Put your ballot in the folder and head for the Ballot Box.



### BALLOT BOX INSPECTOR

I stand near the Ballot Box to assist voters should a problem arise. If one does, I can always call the Clerk!



### NEED ASSISTANCE?

If you have any special needs that will make your voting experience easier and faster, just ask! There are plenty of friendly poll workers waiting to help!



### THE CLERK

I'm in charge of the precinct. If you have any questions or need extra assistance, I'll be happy to help. There's no problem I can't solve!



### SOLICITATION

Equally popular and unpopular, the law prohibits any form of solicitation within 100 feet of your polling place.



### THANK YOU!

After you slide your ballot into the Ballot Box, you're finished! Don't leave without your "I Voted" sticker and wear it proudly!

# OKALOOSA COUNTY POLLING PLACES

<b>PCT #</b>	<b>PCT NAME</b>	<b>POLLING PLACE</b>
1	Baker	Baker Area Recreation Assn. Bldg., 5503 Hwy 4, Baker
2	Blackman	Blackman Community Center, 7590 Hwy 189 N, Blackman
3	Milligan	Milligan Assembly of God Church, 5408 Hwy 4, Milligan
4	Holt	First Baptist Church of Holt, 532 Hwy 90 W, Holt
5	Laurel Hill	First Baptist Church of Laurel Hill, 3972 2nd Ave, Laurel Hill
6	Garden City	Auburn Pentecostal Church, 6144 Hwy 85 N, Crestview
7	Dorcas	Dorcas Baptist Church, Education Bldg, 5880 McCallum Rd, Dorcas
8	Honey Creek	Emmanuel Baptist Church, 3252 James Lee Blvd E, Crestview
<b>9*</b>	<b>Yellow River</b>	<b>New Beginnings Church, 412 James Lee Blvd W, Crestview</b>
10	West Wright	The Covenant Community Church, 1007 Gospel Rd, Ft Walton Beach
11	East CV	Lifepoint Church, 400 Ferdon Blvd S, Crestview
12	West CV	Carver Hill School, 461 School Ave W, Crestview
13	North CV	Woodlawn Baptist Church, 824 Ferdon Blvd N, Crestview
14	West NV	St. Jude's Episcopal Church, 200 Partin Dr N, Niceville
15	Valparaiso	First Baptist Church of Valparaiso, 444 Valparaiso Pkwy, Valparaiso
<b>16**</b>	<b>Shalimar</b>	<b>Okaloosa County Administration Building, 1250 Eglin Pkwy, Shalimar</b>
17	Central Wright	Wright Baptist Church, 795 Beal Pkwy NW, Ft Walton Beach
<b>18†</b>	<b>Ocean City</b>	<b>Beachside Community Church, 200 Racetrack Rd NW, Ft Walton Beach</b>
19	East FWB	Beulah First Baptist Church, 109 McGriff St, Ft Walton Beach
20	West Destin	Destin Community Center, 101 Stahlman Ave, Destin
21	Mary Esther	First Baptist Church, 28 North St, Mary Esther
22	S. Central FWB	St. Mary Catholic Church Parish Life Center, 110 St. Mary Ave SW, Ft Walton Beach
23	Eglin	West Gate Chapel, Eglin Blvd - Bldg 2574, Eglin AFB
24	West FWB	Knights of Columbus, 205 Carol Ave NW, Ft Walton Beach
25	N Central NV	Holy Name of Jesus Catholic Church, 1200 Valparaiso Blvd, Niceville
26	Seminole	Christ Our Redeemer Catholic Church, 1028 White Point Rd, Niceville
27	Cinco Bayou	Cinco Bayou Town Hall, 10 Yacht Club Dr, Ft Walton Beach
28	Garniers	Cinco Bayou Town Hall, 10 Yacht Club Dr, Ft Walton Beach
29	Golf Course	Trinity United Methodist Church, 403 Racetrack Rd NW, Ft Walton Beach
30	Okaloosa Island	Elks Lodge, 1335 Miracle Strip Pkwy, Ft Walton Beach
31	Longwood	Bob Hope Village Welcome Center, 92 Sunset Ln, Shalimar
32	Ferry Park	The Church of Christ, 232 Hollywood Blvd SE, Ft Walton Beach
33	Rocky Bayou	First Presbyterian Church, 1800 John Sims Pkwy, Niceville
34	Florosa	St. Peter Catholic Church, 100 Francis St, Mary Esther
35	North Destin	Destin United Methodist Church, 200 Beach Dr, Destin
36	South NV	Holy Name of Jesus Catholic Church, 1200 Valparaiso Blvd, Niceville
<b>37††</b>	<b>Lake Lorraine</b>	<b>Okaloosa County Administration Building, 1250 Eglin Pkwy, Shalimar</b>
38	North Gate	Salvation Army Chapel, 425 Mary Esther Cut-Off, Ft Walton Beach
39	E Wright	Sons of Italy Bldg, 808 South Dr, Ft Walton Beach
40	South Bluewater	Christ Our Redeemer Catholic Church, 1028 White Point Rd, Niceville
41	N Central FWB	St. Mary Catholic Church Parish Life Center, 110 St. Mary Ave SW, Ft Walton Beach
42	New Heights	Abundant Life Church, 233 Hill Ave N, Ft Walton Beach
43	S Central NV	Holy Name of Jesus Catholic Church, 1200 Valparaiso Blvd, Niceville
44	Central Destin	Destin United Methodist Church, 200 Beach Dr, Destin
45	South CV	Foxwood Country Club, 4927 Antioch Rd, Crestview
46	North Bluewater	Bluewater Community Church, 4580 Range Rd, Niceville
47	Wynnehaven Bch	St. Peter Catholic Church, 100 Francis St, Mary Esther
48	Westwood	The Meridian at Westwood, 1001 Mar Walt Dr NW, Ft Walton Beach
49	East Destin	Destin City Hall Annex, 4100 Indian Bayou Trl, Destin
50	South Destin	Destin City Hall Annex, 4100 Indian Bayou Trl, Destin
51	Airport Rd	Airport Road Church of Christ, 2845 Airport Rd, Crestview
52	Live Oak	Live Oak Baptist Church, 4565 Live Oak Church Rd, Crestview

**POLLS OPEN FROM 7 AM TO 7 PM**

\* 9 Replaces Charles Walthall Building, Crestview  
 \*\* 16 Co-located with Precinct 37 at Okaloosa County Administration Building, Shalimar  
 † 18 Replaces Westminster Presbyterian Church, Fort Walton Beach  
 †† 37 Co-located with Precinct 16 at Okaloosa County Administration Building, Shalimar

Paul Lux  
Okaloosa County Supervisor of Elections  
302 Wilson Street N., Suite 102  
Crestview, FL 32536-3440



**Saturday, August 20th - Saturday, August 27th**

**Early Voting Hours:  
10am - 6pm ALL DAYS**

**See page 2 for Early Voting Locations**

**BEAT THE RUSH, VOTE EARLY!**

# **SAMPLE BALLOT**

## **Primary Election**

### **August 30, 2016**

