

Oksut Project Progress Presentation

13 November 2018
Kayseri



Centerra Gold Vision and Values







2015 Feasibility Highlights

Mine Type	Open Pit, Heap Leach
Avg. LOM Annual Production	110koz Au
Avg. LOM AISC ⁽¹⁾ (US\$/oz)	\$490
Reserve Mine Life	8 years
Development Capex (US\$MM)	\$221
LOM Sustaining Capital ⁽¹⁾ (US\$MM)	\$10
P&P Reserves ⁽²⁾ (Moz)	1.2
Au grade (g/t) ⁽²⁾	1.3
Life of Mine Strip Ratio (w:o)	2:1
First Gold Pour ⁽³⁾	Q1-2020



Catalyst Schedule

✓	EIA approval received in November 2015
✓	Forestry Permit & GSM License received July 2016
✓	Pastureland Permit received January 2018
✓	Investment Incentive Certificate received February 2018
✓	Construction commenced late-March 2018
✓	Bought back Stratex and Teck royalties
✓	US\$150MM low-cost +5-year financing in-place

Installing Road Barriers



(1) Non-GAAP measure see "Non-GAAP Measures" in the MD&A and news release of August 1, 2018.
 (2) Refer to February 8, 2018 news release and Technical Report on Öksüt Gold Project dated September 3, 2015.
 (3) Forward-looking Information refer to News Release October 31, 2018.

- **4th November 2015** EIA Approval
 - **6th June 2016** ESIA Approval
 - **14th July 2016** Forestry Permit
 - **11th August 2016** Operation Permit
 - **12th January 2018** Pastureland Permit
 - **25th March 2018** Main Access Road/Haul Roads Starts
 - **25th April 2018** Heap Leach Pad and site infrastructure Starts
-
- **June 2019** Commence Stripping Over Burden
 - **July 2019** Start Stocking Piling Ore
 - **January 2020** Commence Crushing Ore/Stacking on Heap Leach
 - **February 2020** Commence Irrigation of Heap Leach
 - **February 2020** First Gold Pour

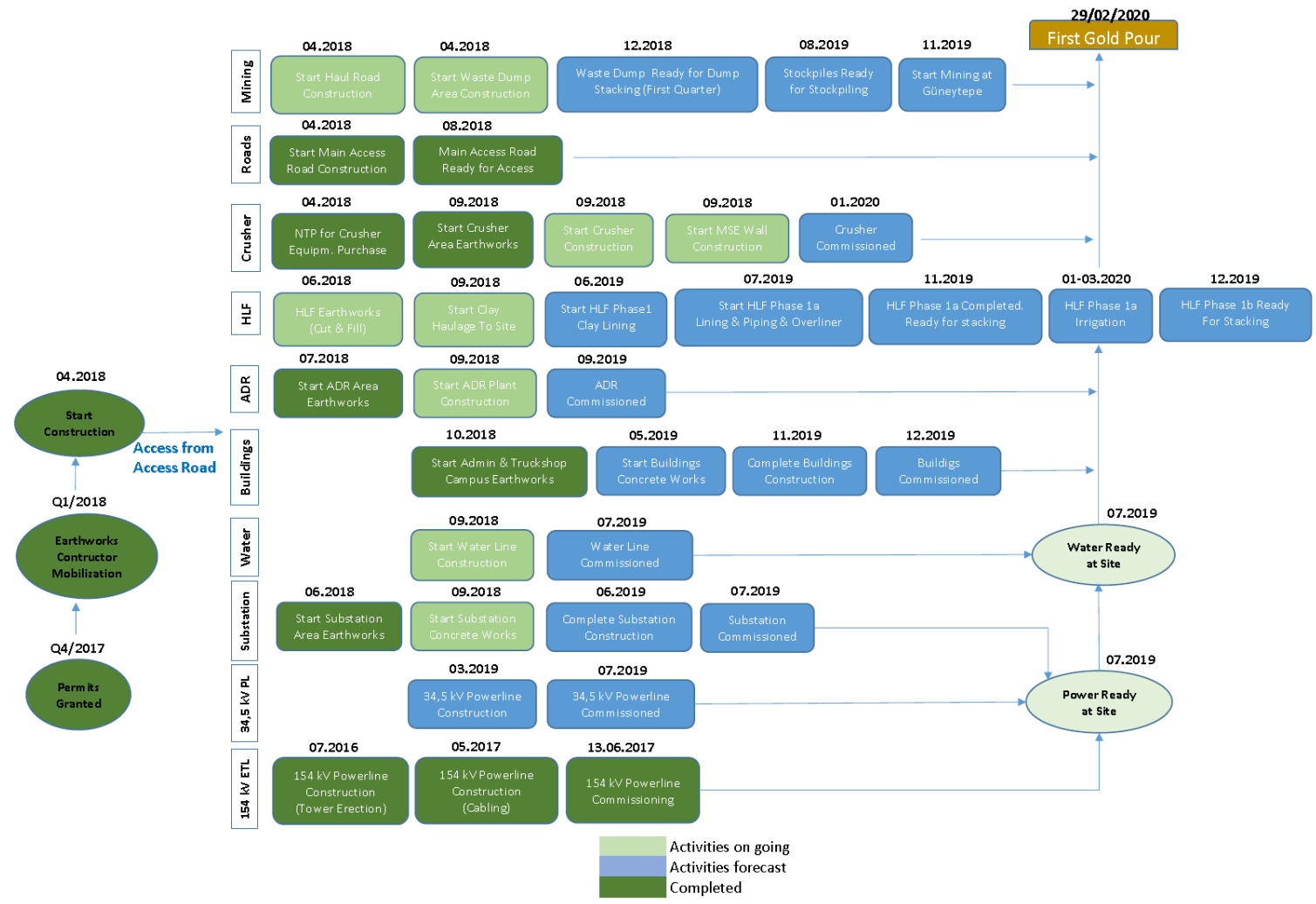
***As of end of October 2018; 905,170 man/hour LTI free from 2015*



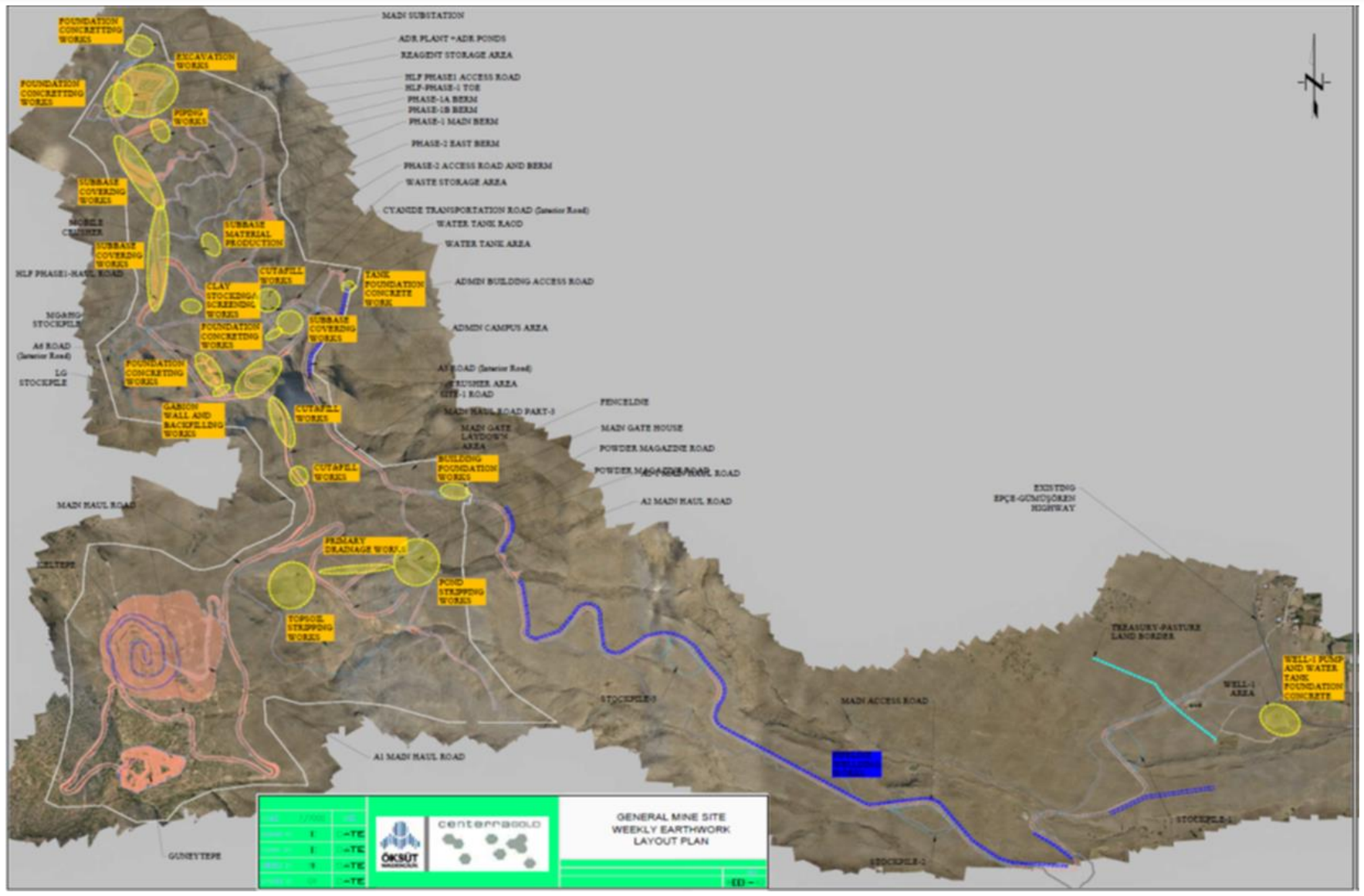
Project Construction



Key Project Milestones



Current Work Locations



Achieved:

- Completed Electrical Power Line from Supply Sub-Station to Mine Site Sub-Station
- Completed all 3rd Party Inspections. Energized 3 times over a 4 day period. All hand over documentation completed between OMAS and TIEAS.
- Design and Engineering is now at 97.4% Completed
- Completed MAR / Site Road 1 to Sub-Base Level July 30 2018
- Started 5 Main Contractors Early. Substation, ADR Plant, Crusher Package, Administration Buildings, Well Areas/Pipe Line (GES, CH Engineering, Birikim, Dorce, ACD)
- Started Weld Jointing of Steel Pipe Line Well 1 to Process Water Tank (10.4Klm)
- Completed Boundary Fencing of Pasture Land Area.
- Developed New Schedule for April 2018 Construction Commencement.
- Re-Base Line of Schedule August 2018 to Reflect Contractors Early Start
- Completed Clay Screening for Hep Leach Phase 1A, 1B, 1C. (130,000m³) Excavated and Stock Piled 72,000m³ at Site.
- Heap Leach Haul Road Will be Completed October 20 2018 (Drilled, Blasted, Excavated and Hauled 320,000m³)
- All Major Equipment Items for ADR Plant and the Crushing Circuit are now all in Turkey 29/10/18

Civil Construction Progress Week 43					
Description	Contractor	Status	Completion %	Comments	
Powerline (154Kva)	BTE	Completed	100%		
HLF Earthworks Phase 1A	CIFTAY	Ongoing	62%		
Lining	YESTI	Not Started	0%		
Main Access Road (Sub-Base Level)	CIFTAY	Completed	100%		
Haul Roads	CIFTAY	Ongoing	38%		
Earthworks Site Facilities	CIFTAY	Ongoing	100%		
Ponds (Process)(Bulk earth works)	CIFTAY	Ongoing	40%		
Main Sub-Station (Civil Work)	GES	Ongoing	75%		
ADR	CH	Ongoing	32%		
Main Pump Station	ACD	Ongoing	62%	Tank Construction Started	
Well No1 Construction	ACD	Ongoing	68%	No Progress Waiting for Steel	
Fresh Water Pipe Line (HDPE)	ACD	Ongoing	99%	Back filling ongoing	
Raw Water Tank Civils Admin Area	ACD	Ongoing	40%		
North WRD Pond Construction	CIFTAY	Started	12%	Stripping Topsoil	
HLF MPEI	Golder	Ongoing	58%		
Site Buildings	DORCE	Ongoing	18%		
Raw Water Pipe Line	ACD	Ongoing	55%		
Site Drainage Work (Temporary)	CIFTAY	Ongoing	96%		
Waste Dump Construction (P1)	CIFTAY	Ongoing	66%		
Boundary Fence Line	ACE	Ongoing	58%	Pasture land only completed	
Site Wide Electrical	TBA	Not Started	0%		
Crusher Retaining Wall (Gabion Baskets)	CIFTAY	Ongoing	100%		
Primary Crusher Foundations	BIRIKIM	Ongoing	75%		
Secondary Crusher Foundations	BIRIKIM	Ongoing	78%		
Stacker (Steel Work)	BIRIKIM	Ongoing	78%		
Crusher Civil Work Overall	BIRIKIM	Ongoing	72%		
HDPE Pipe Work Heap Leach	YESTI	Started	35%		
Laboratory	DORCE	Ongoing	15%	Slab Poured	
Heap Leach Haul Road	CIFTAY	Ongoing	97%	To be Completed October 30	
Administration Building (Offices)	DORCE	Ongoing	12%		
Dining Room	DORCE	Ongoing	8%		

- Concrete for Construction: 33,000m³
- Total Rebar Quantity for Construction: 535,000Kg
- Total Drainage Rock to be Crushed: 300,000m³
- Total Quantity of clay liner Required: 235,000m³
- Total Quantity Crushed Sub-Base Material: 145,000m³
- Total Quantity Crushed Road Top Coarse: 35,000m³
- Total Tonnage of Steel for the Project: 1788 Ton
- PLS Pond Capacity: 70843m³
- Emergency Pond Capacity: 26325m³
- PLS Over Flow Pond Capacity: 83880m³



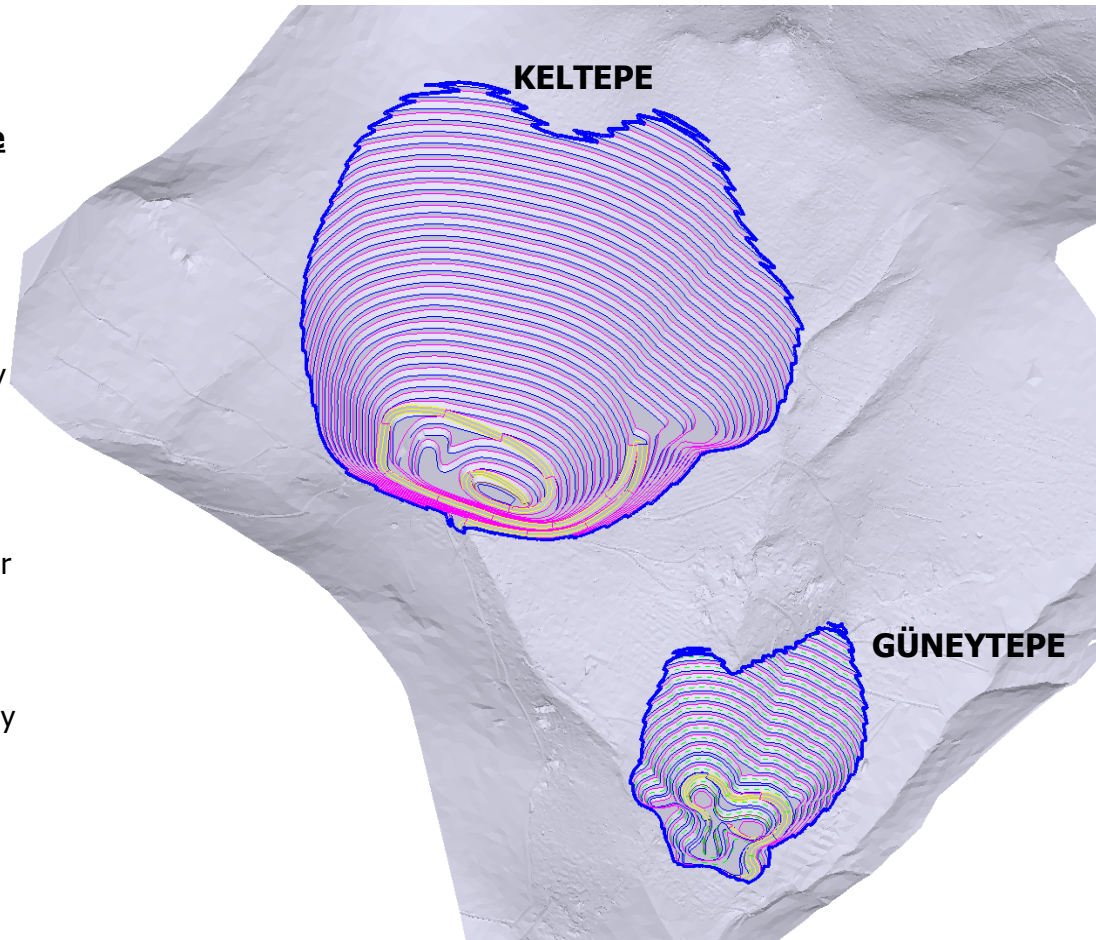
Mining



Mine Engineering, Mine Geology, and other Mining Departments work as a team to provide professionalism and technical excellence.

The Mine Department will be striving to combine the most modern technology available in geology, mine engineering, mine supervision, and production to provide OMAS the safest, most efficient, and economical operation possible.

- OMAS mine engineers and supervisors ensure **Health, Safety, and Environment policies are first priority** in the mine area.
- Mine plans and designs are prepared by OMAS Engineering.
- Drilling & Blasting, Loading and Hauling is done by Contractor.
- OMAS and Contractor's engineers and the mine supervisors will meet on a regular basis to discuss weekly and daily plans and make arrangements for efficient implementation.
- Mining activities are directed by OMAS Mine Engineering to ensure compliance with all company policies and government regulations.



Contractor

Manpower		
No	Position	Quantity
1	Mine Manager	1
2	Site Chief (Deputy Mine Manager)	1
3	HSE Chief (A Class)	1
4	Mechanical Engineer	1
5	Finance & Admin Chief	1
6	Mining Engineer	4
7	Blasting Engineer	1
8	Surveyor	2
9	HSE Expert (c)	2
10	Environment Expert	1
11	Doctor	1
12	Medical Staff	1
13	Mechanical Registry	1
14	Warehouseman	3
15	Accountant	1
16	Hr Responsible	1
17	Procurement Responsible	1
18	Camp Responsible	1
19	Site Foreman	2
20	Mechanical Foreman	2
21	Blaster (certificated)	2
22	Blasting Crew	4
23	Drill Rig Operator	9
24	Excavator Operator	21
25	Truck Driver	105
26	Loader Operator	12
27	Dozer operator	7
28	Grayder Operator	5
29	Water Truck Driver	5
30	Fuel Truck Driver	5
31	Compactor Operator	2
32	Mine Worker	8
33	Maintenance	6
35	Workshop	14
36	Service Driver	4
37	Others	5
TOTAL		240

Mining Fleet		
No	Equipment Type	Quantity
1	Excavator, CAT 374 (5 m3)	5
2	Excavator, CAT 349 (3 m3)	1
3	Excavator, CAT 330 – Rock Breaker	2
4	Wheel Loader, CAT 980 (4 m3)	3
5	Drill rig – ATLAS COPCO	4
6	Haul Truck , MERCEDES 3340	40
7	Dozer, CAT D8	3
8	Grader, CAT 140H & CAT 14H	2
9	Compactor	1
10	Water truck	3
11	Fuel truck	2
12	Maintenance lube truck	2
13	Truck for blasting crew	1
14	Personnel carrier	4
15	Light Vehicle (4X4)	7
16	Light Vehicle	3
17	Low bed - Semi trailer	1
18	Lifting, MANITOU MT1030	1
19	Lighting tower	8



RESERVE AND RESOURCES

The following table shows Öksüt's estimated **gold** reserves and resources at December 31, 2017:

	TONNES (000s)	GRADE Grams/tonne	CONTAINED GOLD OUNCES (000s)
Proven	--	--	--
Probable	28,163	1.3	1,187
Total reserves	28,163	1.3	1,187
Measured resources	2,837	0.5	44
Indicated resources	8,027	0.5	132
Total measured and indicated resources	10,864	0.5	176
Inferred resources	4,932	0.7	108



Finance





PRE-PRODUCTION EXPENDITURES*

Item	Total (\$M)
<u>Direct Costs</u>	
Mining, including HLP Construction	51.2
Utilities	16.5
Infrastructure	22.0
Processing including Crushing and ADR	27.9
Water Handling	8.3
Working Capital	10.2
Total Direct Costs	136.1
<u>Indirect Costs</u>	
Owner's Costs	17.6
Permitting/Land Acquisition	8.2
Construction/Project Management	33.8
Contingency (15%)	25.1
Total Indirect Costs	84.7
<u>Total Pre-production Expenditures</u>	220.8

A closure cost of \$27M has been estimated and included in the total capital cost.

OPERATING COST SUMMARY*

Area	Unit	Value
Processing	\$/t processed	5.17
General & Administrative	\$/t processed	2.50
Mining ¹	\$/t mined	2.34
Royalties	\$/t processed	1.36
Refining	\$/t processed	0.11

¹ Mining includes ore re-handling costs and \$30M of capitalized stripping.

* Based on Technical Report NI 43-101 – September 3, 2015

2018 Capital Spending



2018 Production Guidance	Units	Kumtor	Mount Milligan ⁽¹⁾	Centerra
Gold				
Total Gold Payable Production ⁽²⁾	(Koz)	490 – 510	175 – 195	665 – 705
Copper				
Total Copper Payable Production ⁽³⁾	(Mlb)	–	40 – 47	40 – 47
2018 All-in Sustaining Unit Costs⁽⁵⁾		Kumtor	Mount Milligan⁽¹⁾	Centerra⁽¹⁾
Ounces sold forecast		490,000 – 510,000	175,000 – 195,000	665,000-705,000
All-in sustaining costs on a by-product basis^{(2), (5)}		\$700 – \$750	\$825 – \$875	\$782 – \$829
Revenue-based tax ⁽⁴⁾ and taxes ⁽⁴⁾		174 – 181	17 – 18	131 – 139
All-in sustaining costs on a by-product basis including taxes ^{(1), (4), (5)}		\$874 – \$931	\$842 – \$893	\$913 – \$968
Gold - All-in sustaining costs on a co-product basis (\$/ounce) ^{(1),(5)}		\$700 – \$750	\$820 – \$914	\$786 – \$833
Copper - All-in sustaining costs on a co-product basis (\$/pound) ^{(1),(5)}		–	\$1.91 – \$2.24	\$1.91 – \$2.24

Capital Expenditures	2018 Sustaining Capital ⁽⁵⁾ (\$ millions)	2018 Growth Capital ⁽⁵⁾ (\$ millions)
Kumtor Mine	41	17
Mount Milligan Mine	52	-
Öksüt Project	-	62
Kemess Underground Project	-	33
Greenstone Gold Property	-	11
Other (Thompson Creek mine, Endako mine (75%), Langeloth facility and Corporate)	1	-
Consolidated Total	\$94	\$123

1) Mount Milligan payable production and ounces sold are on a 100% basis (the Mount Milligan Streaming Arrangement entitles Royal Gold to 35% and 18.75% of gold and copper sales, respectively and Royal Gold will pay \$435 per ounce of gold delivered and 15% of the spot price per metric tonne of copper delivered). The copper sales are based on a copper price assumption of \$2.70 per pound sold for Centerra's 81.25% share of copper production and the remaining 18.75% of copper revenue at \$0.41 per pound (15% of spot price, assuming spot at \$2.70 per pound), representing the Mount Milligan Streaming Arrangement. Payable production for copper and gold reflects estimated metallurgical losses resulting from handling of the concentrate and payable metal deductions, subject to metal content, levied by smelters.

2) Gold production assumes 76% recovery at Kumtor and 61% recovery at Mount Milligan.

3) Copper production assumes 79% recovery for copper at Mount Milligan.

4) Includes revenue-based tax at Kumtor and the British Columbia mineral tax at Mount Milligan based on a forecast gold price assumption of \$1,200 per ounce sold

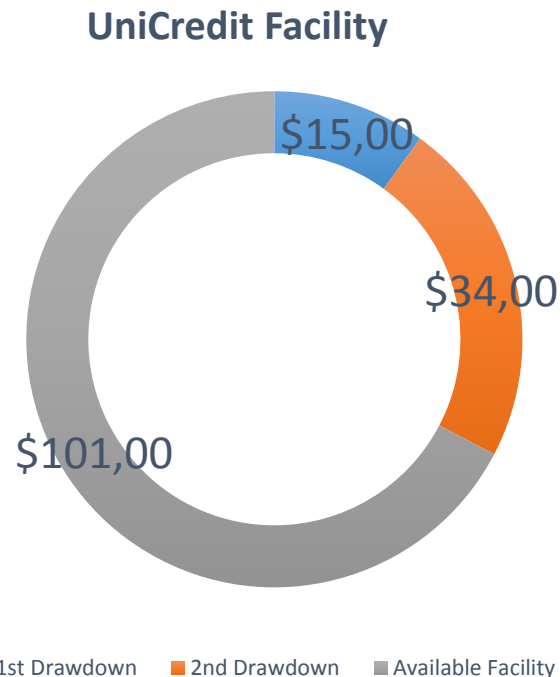
5) Non-GAAP measures and are discussed under "Non-GAAP Measures" in the MD&A and News Release dated October 31, 2018



Nine months ended September 30,	Kumtor	Mount Milligan	Turkey	All other	Consolidated
(\$ millions) <i>(Unaudited)</i>					
2018					
Capitalized stripping –cash	77.6	-	-	-	77.6
Sustaining capital - cash	31.8	32.1	-	-	63.9
Growth capital - cash	13.8	-	-	-	13.8
Gatsuurt project development capital cash	-	-	-	-	-
Greenstone Gold Property pre-development capital cash	-	-	-	7.6	7.6
Kemess Property pre-development capital cash	-	-	-	17.0	17.0
Oksüt project development capital - cash	-	-	28.7	-	28.7
Molybdenum business capital - cash	-	-	-	0.8	0.8
Adjustment for changes in accruals and other non-cash items included in additions to PP&E	(4.0)	(6.8)	(9.2)	-	(20.0)
Greenstone Gold Property translation adjustment	-	-	-	(0.5)	(0.5)
Total - Additions to PP&E ⁽¹⁾	119.3	25.3	19.5	24.9	188.9

OMAS Cash Position, September 30, 2018

- **UniCredit Facility Utilization of \$49M**
 - **\$15M 1st Drawdown at Q2,**
 - **\$34M 2nd Drawdown at Q3.**
- **During the three and nine months ended September 30, 2018, the Company spent \$14.0 million and \$29.7 million respectively, mainly on development activities and associated fees as explained above.**



IIC CERTIFICATE UPDATE

Total Application (Million)	Contribution Rate	Reduced Rate Tax Base	CIT Advantage	USD
200 ₺	50%	555.55 ₺	100 ₺	\$ 20
Updated Application	Contribution Rate	Reduced Rate Tax Base	CIT Advantage	Total Advantage
400 ₺	50%	1,111.11 ₺	200 ₺	\$ 40

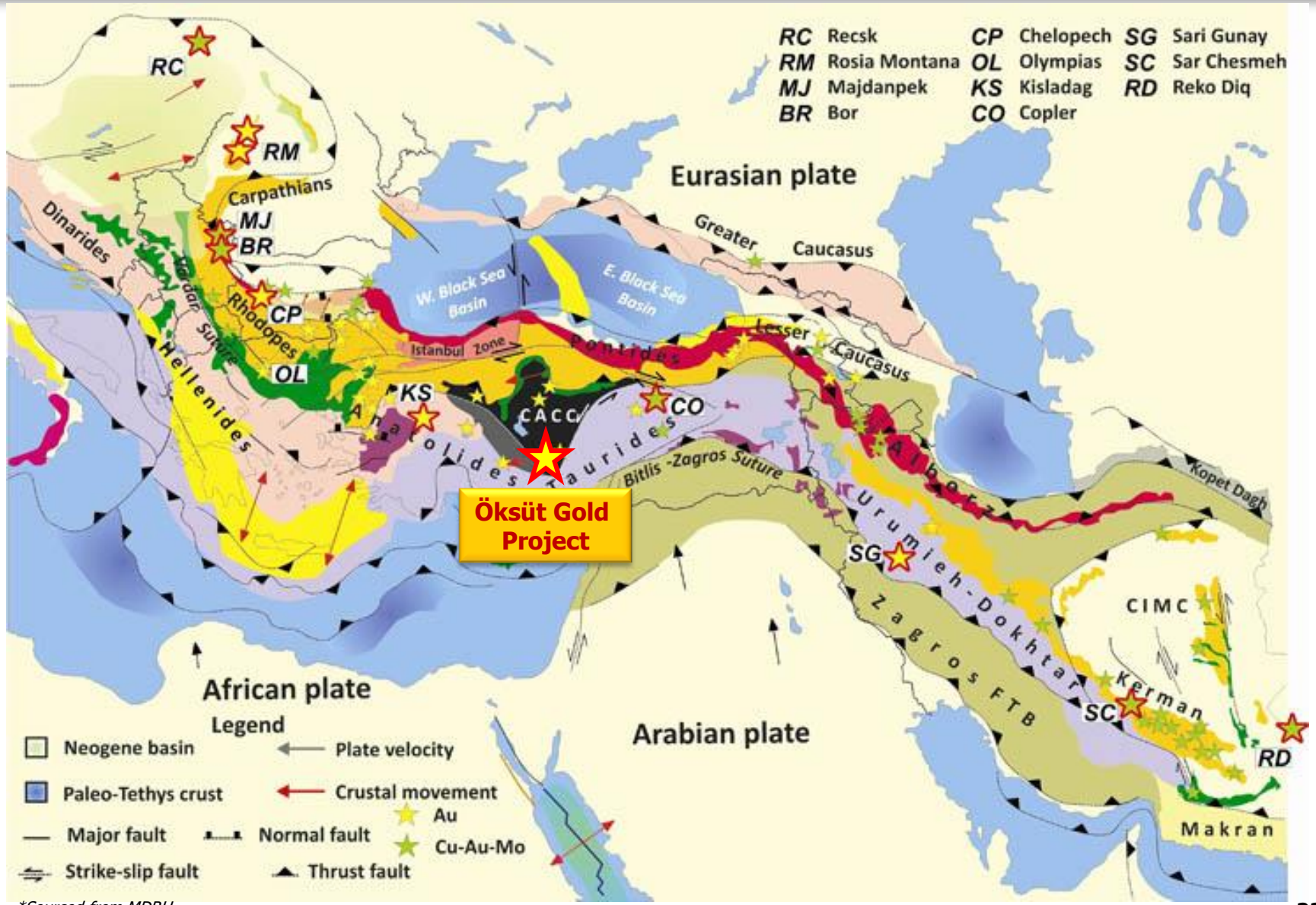




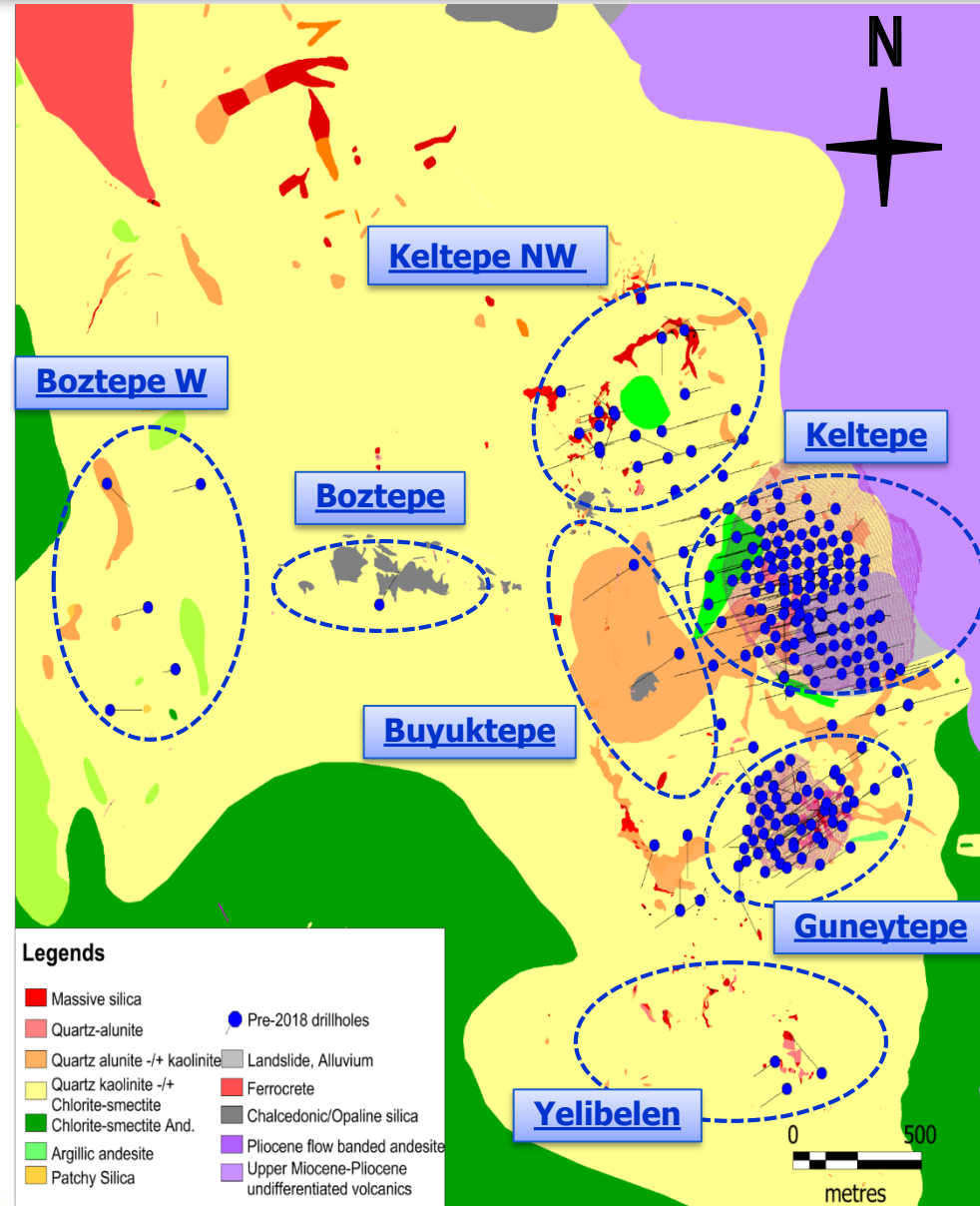
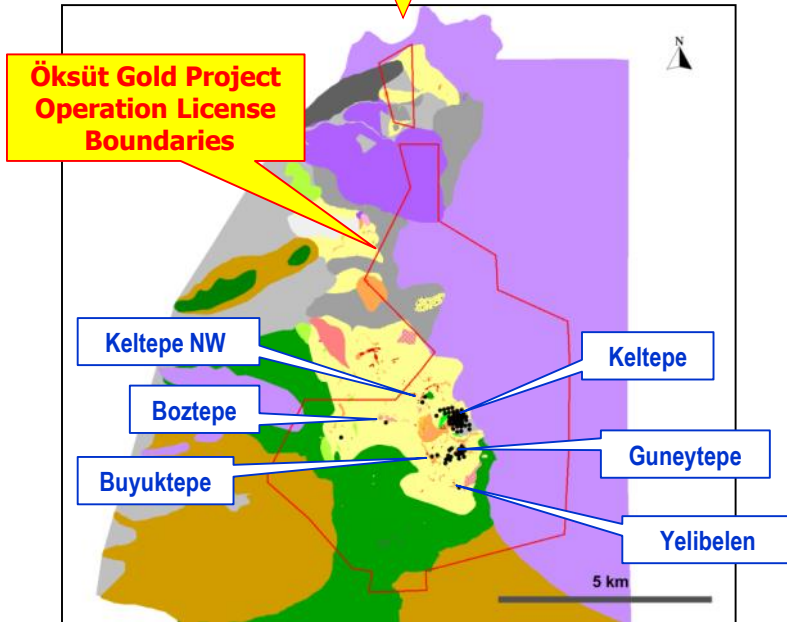
Exploration

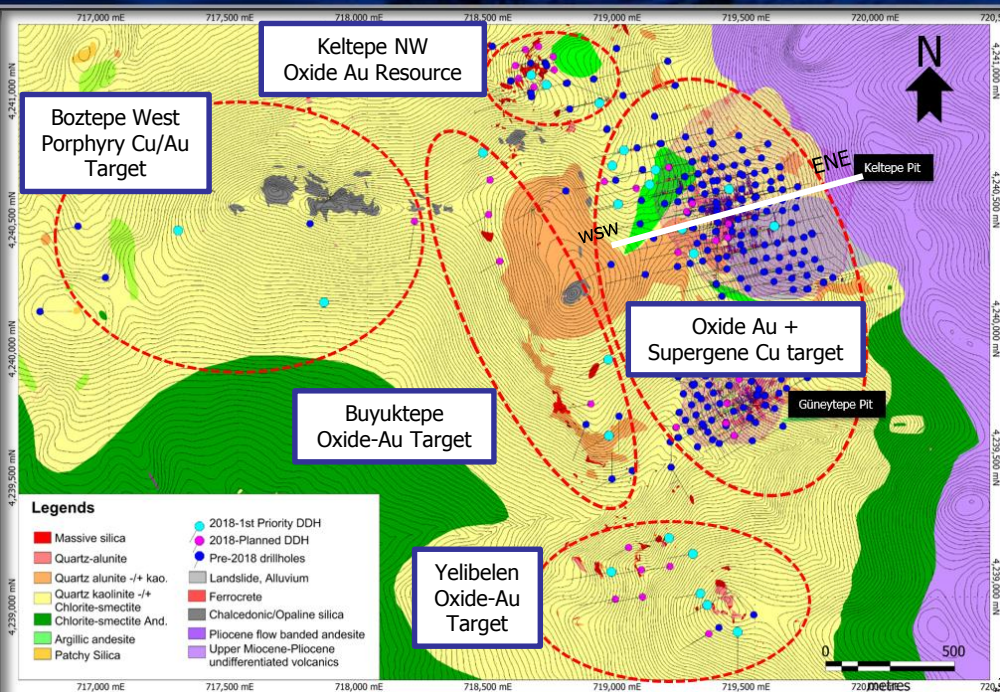


Tethyan Metallogenic Belt



*Sourced from MDRU





Major target zones have been identified so far;

- Oxide Au mineralization including;
 - ✓ Keltepe NW,
 - ✓ Keltepe resource expansion,
 - ✓ Buyuktepe mineralization potential; testing geochem and geophysical anomalies,
 - ✓ Yelibelen mineralization; geological, geophysical and geochem targets.
- Supergene Cu mineralization;
- Conceptual porphyry style Cu/Au mineralization;

Some of the significant oxide gold – supergene Cu intervals;

Keltepe (Testing for resource expansion/conversion/upgrade; oxide Au)

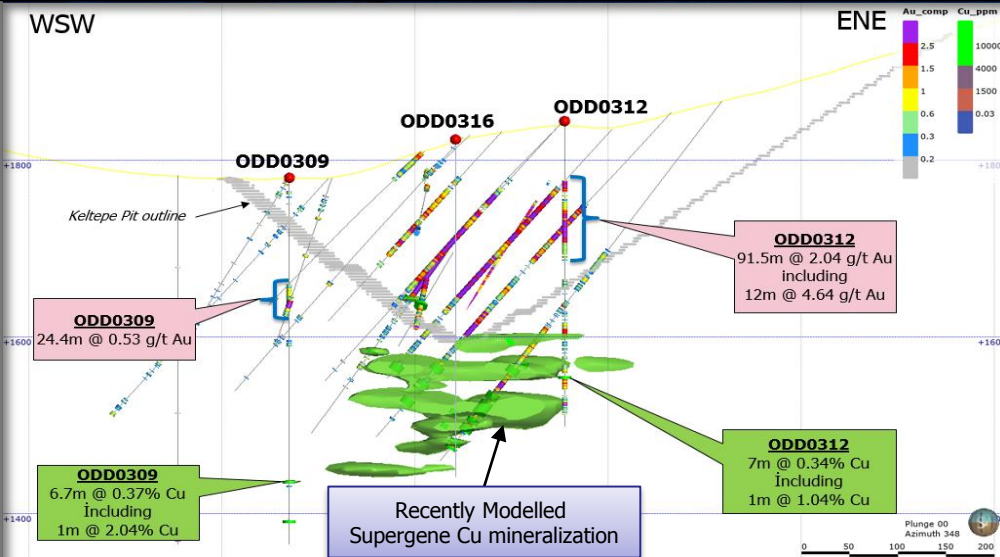
- ODD0308: 48.8 metres @ 0.44 g/t Au from 66 metres;
- ODD0311A: 180.4 metres @ 0.88 g/t Au from 25.3 metres; including 25.5m @ 1.17 g/t Au;
- ODD0313: 162.1 metres @ 1.65 g/t Au from 71.5 metres; including 57.8m @ 2.86 g/t Au;
- ODD0316 : 193.2 metres @ 2.2 g/t Au from 16.6 metres; including 86m @ 3.27 g/t Au;

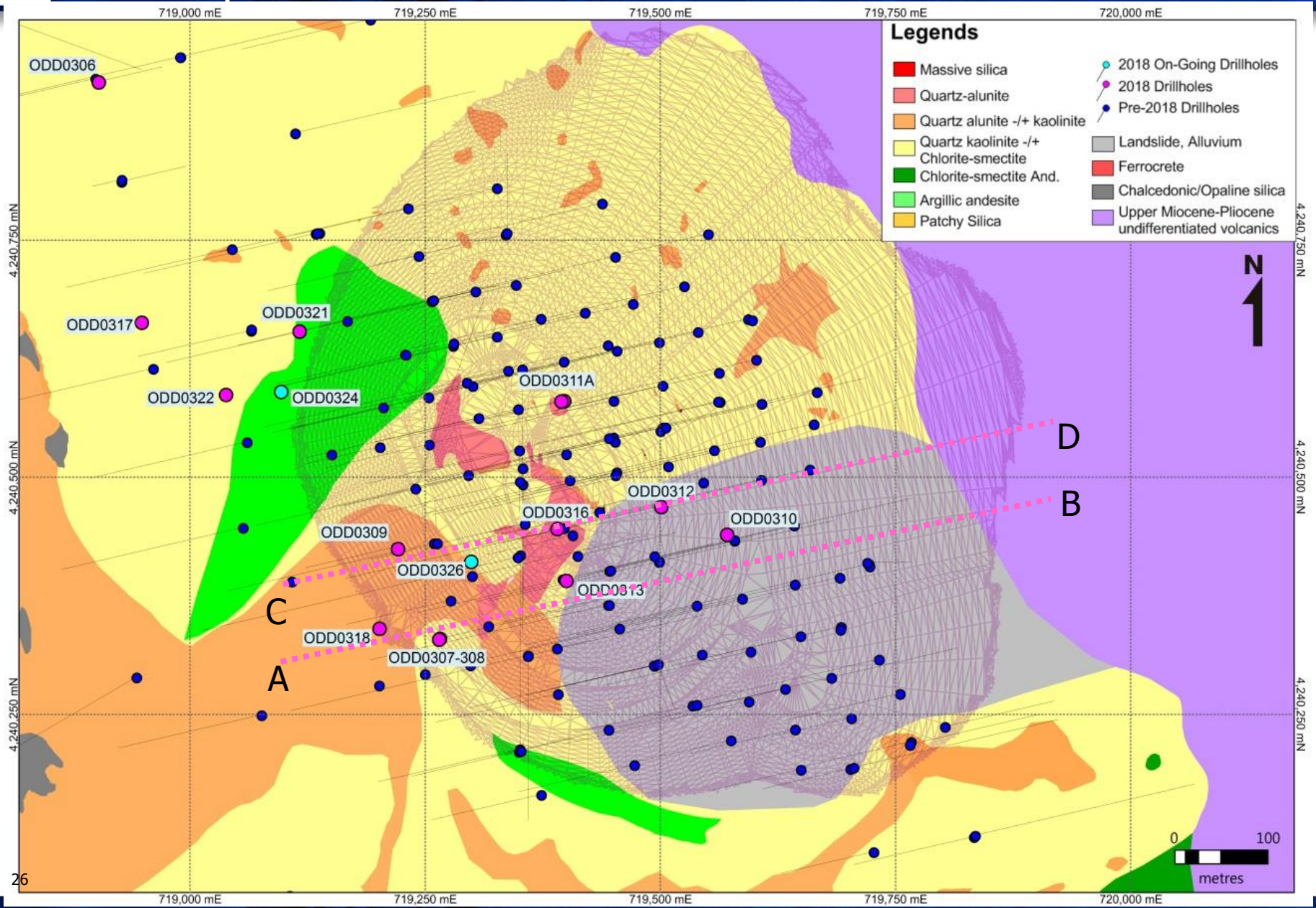
Keltepe (Testing supergene Cu mineralization at depth)

- ODD0311A: 5 metres @ 1.49% Cu and 0.38 g/t Au from 343.8m;
- ODD0313: 16.9metres @ 0.77%Cu and 1.72g/t Au from 219.9 metres;
including 2.4 metres @ 3.05% Cu and 3.52 g/t Au;
- ODD0316 : 51.3metres @ 1.15%Cu and 1.67g/tAu from 209.8m; including 4.3m @ 8.89%Cu and 2.3g/tAu.

Keltepe NW (Exploration, testing oxide gold)

- ODD0304A: 25.9 metres @ 0.41 g/t Au from 76.5 metres.

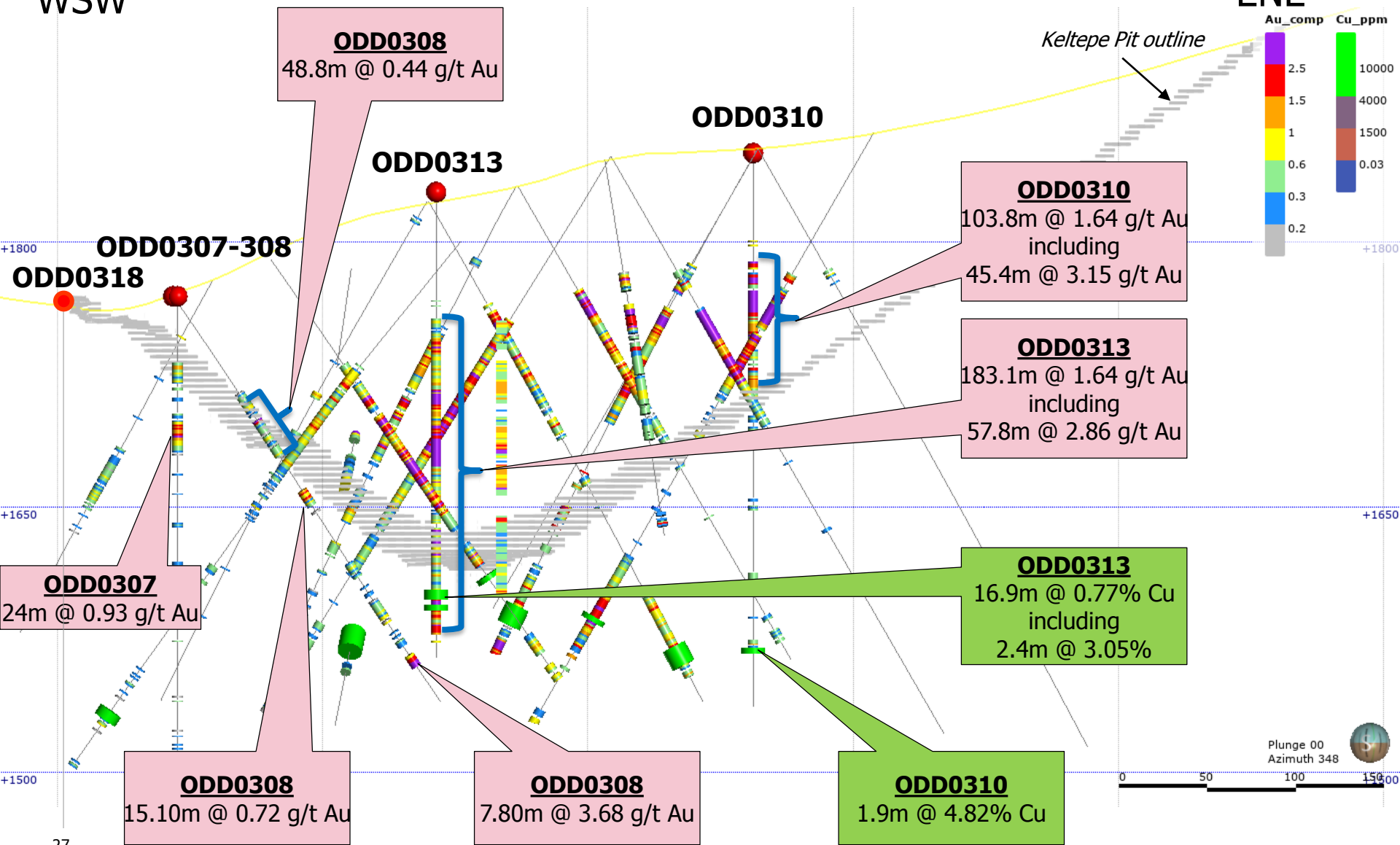


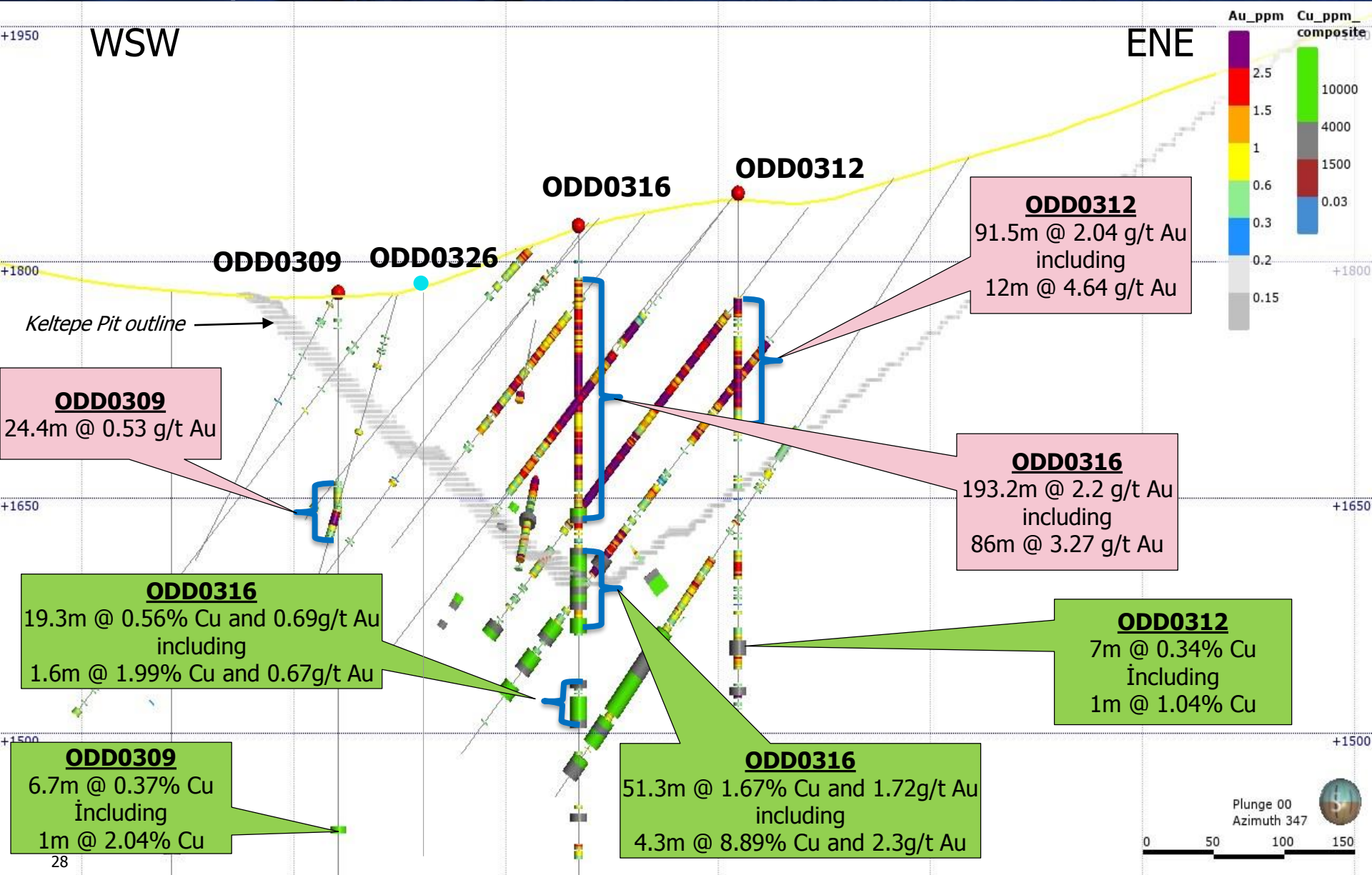




WSW

ENE







OHS & Sustainability

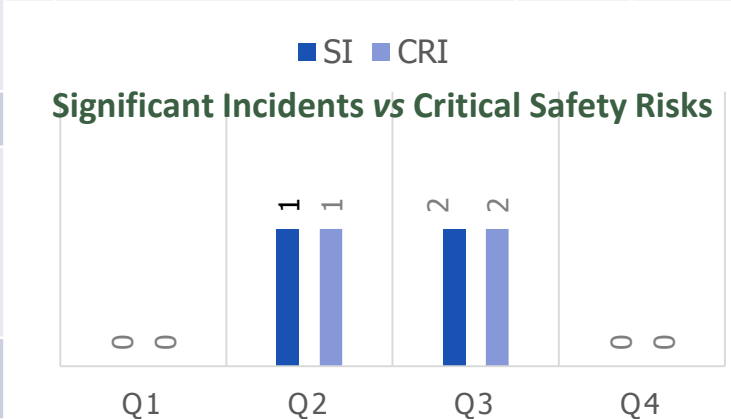


Lag Indicators

Total Reportable Injury Frequency Rate (TRIFR)		
Target	YTD	Status
<1,5	0	
Severity Rate		
Target	YTD	Status
8.0	0	

Critical Risks (CR's) (Highest to Lowest Occurrence)

Critical Risk Categories		QTD	YTD
1	Mobile Equipment (Heavy & Light Vehicle)	2	3
2	Release of Energy	0	0
3	Cranes and Lifting	0	0
4	Working at Heights	0	0
5	Exposure to Chemicals	0	0



Preventative Activities

	YTD	Y/E TARGET
#Safety Meetings	2217	1697
#Inspections	609	150
#Training Hours	15902	4284
#Near Miss Reports	5	x
#Hazards Identified	259	157
Work Safe – Home Safe attendance	320	300

Key Projects & Initiatives

Implementation	Status
Safety Leadership Initiative	
Reduction of Mobile Equipment Incidents	

Significant Incidents (SI)

	# Incidents	ICAM Completion	Management Review
QTD #	1	1	1
YTD #	2	2	2

Compliance Audits

	# Findings	% Complete	Status
QTD #	35	75	20
YTD #	48	85	20

KEY

Audits, Risk Management & AIP Objectives	0-33% Implemented	33-66% Implemented	>66% Implemented
Initiatives & Projects	Major Issues (deliverables compromised)	Minor Issues (recoverable)	On Track or Approved

Total of Incident					
To date			This Reporting Period		
0			0		
Date Raised	Registration Number	Location	Incident Summary	Corrective Action	Close out Date
-	-	-	-	-	-

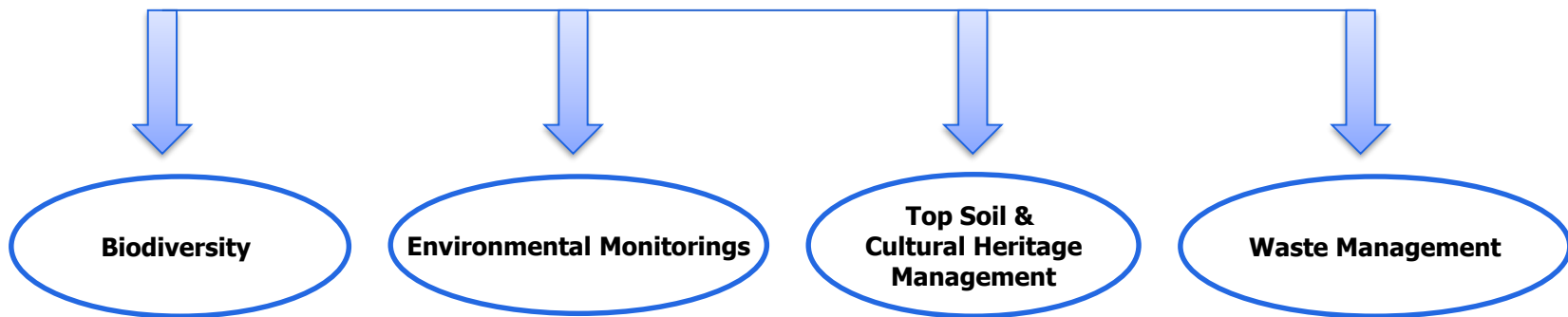
* No reportable incident YTD

Compliance Audits			
Type	# Findings	% Complete	Sratus
Regulatory	0	%100	↑
Internal Audit	0	%100	↑
CN Code	N/A	N/A	N/A

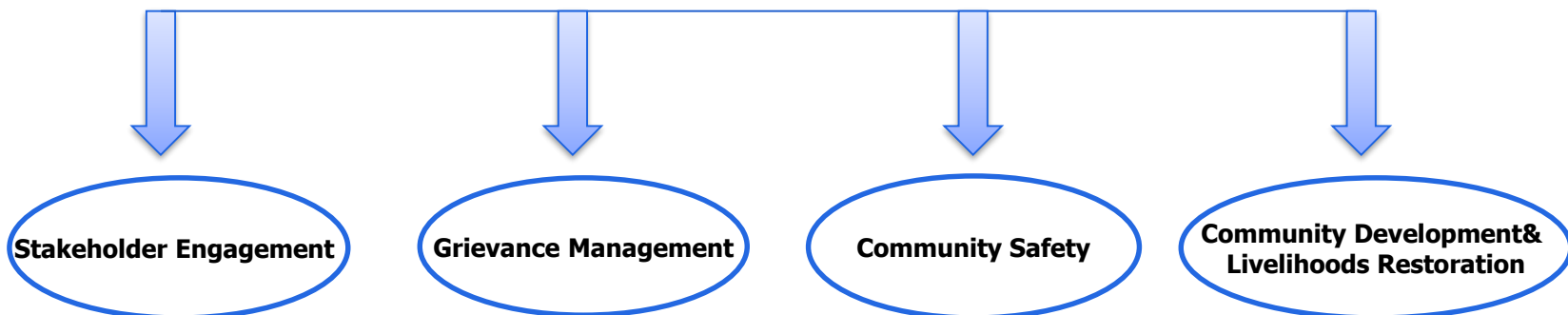
Projects & Initiatives	
Title	Status
Biodiversity Management Plan	Active
ESIA and Management Plans	Active

Stakeholder Engagement								
# Community Meetings		# Local Officials Visit				# Total		
MTD	YTD	MTD	YTD			MTD	YTD	
24	291	8	86			32	377	
Grievance Resolution								
# Grievance		% resolved within the targeted timeframe				# of unresolved Grievances (cumulative)		
MTD	YTD	MTD	YTD			MTD	YTD	
0	18	0	18			0	0	
CSR/Community Projects			Donations			Livelihoods Restoration		
Approved Budget (2018)	MTD	YTD	Approved Budget	MTD	YTD	Approved Budget	MTD	YTD
225K	8.829,79	9.339,79	25K	11.848,79	11.848,79	250K	1.656,24	2.124,24

Environmental Management System



Social Management System



Pre-Construction Biodiversity Studies

- Protection of flora conservation areas,
- Pre-construction flora and fauna surveys for mine access road route and mine site by Erciyes University,
- Bird Deterrent installation to construction sites during mid april to mid may,
- Translocation of species to nursery, and protected areas in mine fence line,



Environmental Monitoring

- Working with Golder Turkey,
- Dust, noise, and vibration measurements as per the EIA and ESIA commitments were started,
- Water monitoring and sampling from the determined surface water resources ongoing,
- Observation wells drilling for ground water monitoring are ongoing.



Top Soil Management

- Top Soil Management Plan,
- Top Soil Removal Permit Form,
- Stripped Top Soil Register,
- Trainings for construction team,
- Daily calculation of stripped top soil,
- Top Soil storage area protection,

BİTKİSEL TOPRAK KALDIRMA İZİN FORMU TOPSOIL REMOVAL PERMIT FORM		
Form No:	Tarih/Date:	
<p>Doldurmadan Önce Dikkat Edilmesi Gereken Hususlar / Please ensure all the conditions below prior to fill the form:</p> <p>*Tasarrufların alınması gerektiren işler ve onaylar olmadan ve bu form doldurulup Çevre ve Sağlık Birimleri Bölümü tarafından onaylanmadan çalışma sahalarında bitkisel toprak kaldırma işlemi yapılmayacaktır. / Ensure no topsoil is removed before receiving all official permits and approval from E&S Department</p> <p>*Yalnız Bu İzin ile Belirtilen İşlerin Yapılmasına Onay Verilmiştir / This permit only applies for the work which is defined below</p>		
<p>Bölüm-1/Section-1 TALEP/REQUEST (Talebi yapan ÖMAS Bölümü veya Alt İşveren (yüklenici) tarafından doldurulacaktır/ To be filled by the requester ÖMAS Department or Contractor)</p> <p>Talep eden Bölüm/Alt İşveren (yüklenici) / Requesting Department/Contractor:</p> <p>Sorumlu Personel Adı-Soyadı-Uyvanı / Name-Surname-Title of the responsible employee:</p> <p>Bitkisel Toprak Kaldırma Nedeni ve Yöntemi / Reason for the removal-Method to be used:</p> <p>Kaldırılacak Toprak Miktarı (m³) / Quantity of the topsoil to be removed (m³):</p> <p>Yer (Koordinat Belirtilir) / Location(Coordinates):</p> <p>Talep Edilen İşin Başlangıç ve Bitiş Süresi (Saat/Gün/Ay/Yıl olarak belirtiniz) / Start date, finish date and duration of the work (State as Hour/Day/Month/Year)</p> <p>Başlangıç Tarihi/Starting Date:</p> <p>Bitiş Tarihi/Finishing Date:</p> <p>Kaldırılacak Bitkisel Toprakın Nasil ve Nerede Depolanacağı (Koordinat Belirtilir) / Describe where and how the topsoil will be stored (Coordinates):</p>		
<p>Bölüm-2/Section-2 SAHA DENETİMİ / FIELD INSPECTION (ÖMAS ÇHI Bölümü personeli tarafından doldurulacaktır / To be filled by ÖMAS E&S Department personnel)</p> <p>Personelin Adı-Soyadı-Uyvanı / Name-Surname-Title of the Personnel:</p> <p>Bitki Türü ve Sayısı / Quantity and type of the flora:</p> <p>Hayvan Türü ve Sayısı / Quantity and type of the fauna:</p> <p>Endemik Türler / Endemic Species:</p> <p>Toprak Depolama Alanı Uygunluğu ve İşaretlenmesi / Suitability of the topsoil storage area-Labeling:</p> <p>Toprak Kaldırma sırasında oluşan çevresel etkiler (Tox, Gürültü vb) / Environmental impacts (Dust, Noise etc.) during removal of topsoil:</p> <p>Bölüm-3/Section-3 Onay/Approval (ÖMAS ÇHI Müdürü / Valisi tarafından onaylanacaktır / To be approved by E&S Manager / or his alternate)</p> <p>Ek Önlemler ve Rehabilitasyon / Additional precautions and Rehabilitation:</p>		
Adı-Soyadı-Uyvanı/Name-Surname-Title:	Tarih/Date:	
Doküman No / Document No ÖMAS-ES-ENV-FOR-003	Rev. Tar. ve No / Rev. Date-No 11.07.2017 - 001	Geçerlilik Tar. / Date Effective 01.08.2016
Bölüm / Department Environmental and Social (E&S)	Hazırlayan / Author E&S	Onaylayan / Approved By E&S

Cultural Heritage Protection

- Cultural Heritage Management Plan,
- Chance Find Observation Form,
- Trainings to all project employees,
- Communication with relevant authorities, muhtars, gendarmerie, museums

RASTLANTISAL BULUNTU FORMU CHANCE FIND OBSERVATION FORM																				
Form No:	Tarih / Date:																			
<p>Bölüm-1/Section-1 Arkeolojik Buluntu Konum Bilgileri / Location Of The Archeological Finding (ÖMAS veya Alt yüklenici tarafından doldurulacaktır / filled by ÖMAS Department or Contractor who detected)</p> <p>ÖMAS Bölüm - Alt yüklenici / ÖMAS Department- Contractor:</p> <p>Sorumlu Personel Adı / Soyadı / Uyvanı / Name-Surname-Title of the responsible employee:</p> <p>Koordinat/Coordinates:</p> <p>Rakım/Altitude:</p> <p>Bulunduğu Alanın Tanımı / Description of the Area:</p>																				
<p>Bölüm-2/ Section-2 Arkeolojik Buluntu ile İlgili Bilgiler / Information About The Finding (ÖMAS ÇHI Bölümü tarafından doldurulacaktır/ to be filled by ÖMAS E&S Department personnel)</p> <p>Personelin Adı/Soyadı/Uyvanı / Name-Surname-Title of the Personnel:</p> <table border="1"> <tr> <td>Arkeolojik Parçalar / Archaeological Pieces</td> <td><input type="checkbox"/></td> <td>Çömlek Parçaları / Pot Pieces</td> <td><input type="checkbox"/></td> <td>Heykel vs. Sculpture etc.</td> <td><input type="checkbox"/></td> </tr> <tr> <td>Metal Bulgular / Metal Finding</td> <td><input type="checkbox"/></td> <td>İnsan / Hayvan Kemigi / Human/Animal Bones</td> <td><input type="checkbox"/></td> <td></td> <td><input type="checkbox"/></td> </tr> <tr> <td>Terakota Bulguları (Düğü, kök başı, süzgeçniçkeni) Terza veya metal nesneler Terra cotta Finding</td> <td><input type="checkbox"/></td> <td>Cam Bulguları / Glass Finding</td> <td><input type="checkbox"/></td> <td>Tanımlanmamış Undefined</td> <td><input type="checkbox"/></td> </tr> </table> <p>Bulutunun Hasar Görüp Görmediğine Dair Bilgi / Information On Any Damage On The Finding / Fotoğrafları ekleyiniz / Attach Photos:</p> <p>Geçici Önlemler / Temporary Precautions:</p> <p>Fotoğraflar ve Teknik Çizim (Ekleyiniz) / Photos and Technical Draft (Attach):</p>			Arkeolojik Parçalar / Archaeological Pieces	<input type="checkbox"/>	Çömlek Parçaları / Pot Pieces	<input type="checkbox"/>	Heykel vs. Sculpture etc.	<input type="checkbox"/>	Metal Bulgular / Metal Finding	<input type="checkbox"/>	İnsan / Hayvan Kemigi / Human/Animal Bones	<input type="checkbox"/>		<input type="checkbox"/>	Terakota Bulguları (Düğü, kök başı, süzgeçniçkeni) Terza veya metal nesneler Terra cotta Finding	<input type="checkbox"/>	Cam Bulguları / Glass Finding	<input type="checkbox"/>	Tanımlanmamış Undefined	<input type="checkbox"/>
Arkeolojik Parçalar / Archaeological Pieces	<input type="checkbox"/>	Çömlek Parçaları / Pot Pieces	<input type="checkbox"/>	Heykel vs. Sculpture etc.	<input type="checkbox"/>															
Metal Bulgular / Metal Finding	<input type="checkbox"/>	İnsan / Hayvan Kemigi / Human/Animal Bones	<input type="checkbox"/>		<input type="checkbox"/>															
Terakota Bulguları (Düğü, kök başı, süzgeçniçkeni) Terza veya metal nesneler Terra cotta Finding	<input type="checkbox"/>	Cam Bulguları / Glass Finding	<input type="checkbox"/>	Tanımlanmamış Undefined	<input type="checkbox"/>															
<p>Bölüm-3/Section-3 Onay/Approval (ÖMAS ÇHI Müdürü / Valisi tarafından onaylanacaktır / Approval will be signed by E&S Department Manager/Alternate)</p> <p>Adı-Soyadı-Uyvanı/Name-Surname-Title:</p> <p>Tarih/Date:</p>																				
Doküman No / Document No ÖMAS-ES-ENV-FOR-004	Rev. Tar. ve No / Rev. Date-No 11.07.2017 - 001	Geçerlilik Tar. / Date Effective 15.08.2016																		
Bölüm / Department Environmental and Social (E&S)	Hazırlayan / Author E&S	Onaylayan / Approved By E&S																		


Waste Management

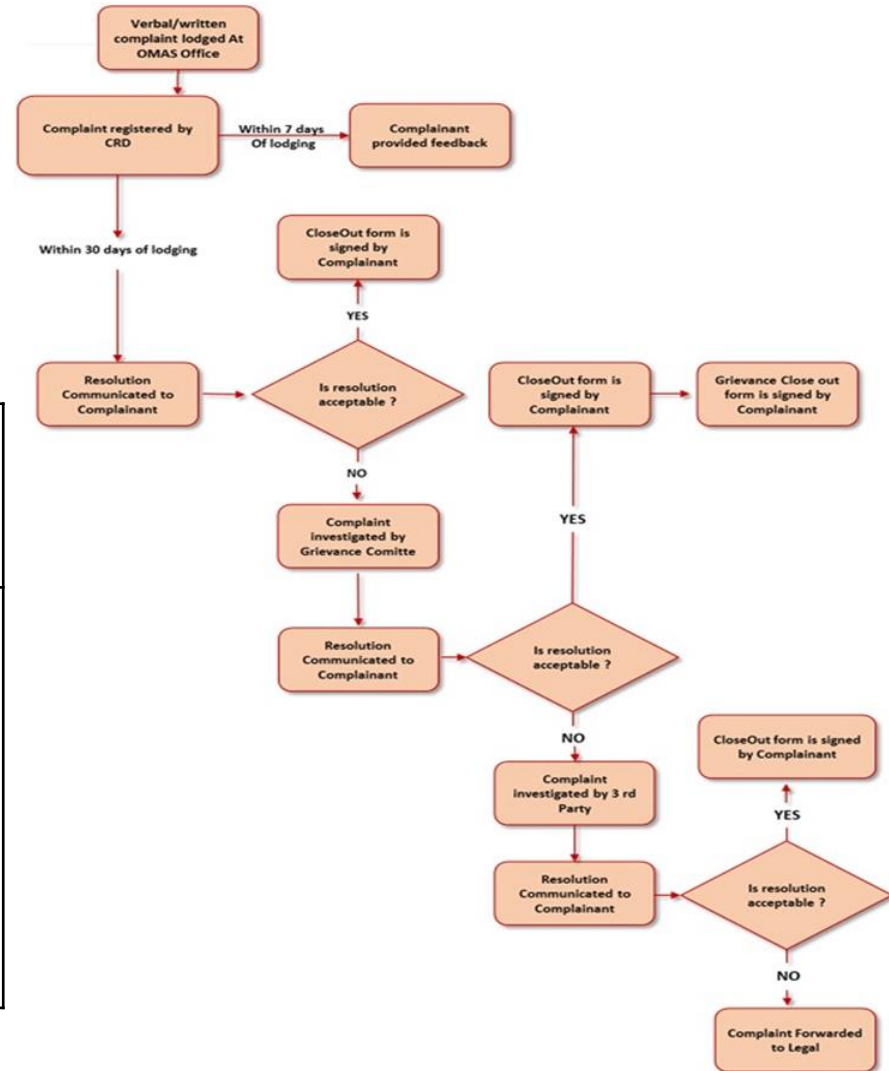
- Non Mineral Waste Management Plan is in place,
- Communication with the contractors about the waste management requirements,
- Waste transportation and disposal contracts of contractors are being followed,
- Communication with the local authorities for the waste management facilities,
- Trainings to all employees are ongoing.



Grievance Management

- Grievance Procedure,
- Grievance record and resolution forms,
- Trainings to all employees,
- Meetings for each communities,
- Feedback form usage for site personnel,
- Monthly grievance register.

 <p>GERİ BİLDİRİM, ŞİKAYET VE İSTEK KAYIT FORMU FEEDBACK, COMPLAINT& REQUEST FORM</p>	<p style="text-align: right;"><i>No 0001</i></p> <p>KAYDEDEN ADI& SOYADI RECORDER NAME& SURNAME</p> <p>ŞİRKETİ- GÖREVİ COMPANY- DESIGNATION</p>
<p>BAŞVURU SAHİBİNİN ADI&SOYADI APPLICANT'S NAME&SURNAME</p>	<p>GERİ BİLDİRİMİN, ŞİKAYETİN& İSTEĞİN TANIMI DEFINE FEEDBACK / COMPLAINT / REQUEST</p>
<p>TELEFON NUMARASI PHONE NUMBER</p>	
<p>TARİH/DATE ADRES/ADDRESS</p>	<p>NOT: Bu evrağı Halkla İlişkiler bölümüne teslim ediniz/ This form must be return to CR Department.</p>



Community Safety

- Community Health, Safety and Security Management Plan,
- Community Safety Action Register,
- Construction awareness meetings for the nearby communities,
- Traffic awareness and road safety meetings for women, men and children,
- Controlled community and animal passages along the mine access road,
- Information sessions for machinery mobilisation and blasting activities,
- Vibration, dust, and noise measurements.



Livelihoods Restoration

- Livelihoods Restoration Plan,
- Regular consultation sessions with pastureland users,
- Mine fence line design changes to reduce the pastureland usage,
- Animal crossing points designing along the by-pass and mine access road routes,
- Questionnaire study for project affected animal breeders,
- An alternative grazing land provided at Erciyes Mountain for the sheepfarmers,
- Access road planning and permitting process completed around the fence line,
- An alternative passage provided to Epçe animal breeders,
- Delaying fence construction till the 2018 summer grazing season around water sources access route,
- Alternative water sources development has started by working with the shepherds.

CSR Projects

- Community Development Plan,
- Budget allocation and project selection criteria definitions,
- Village committee meetings to explain the CDP completed,
- Submitting the projects to OMAS Social Investment Committee, and approval process will be in place in June,
- Implementation of the projects with the partners will start in July.



Control of EIA and ESIA Commitments

OMAS has prepared environmental and social commitment registers for both EIA and ESIA;

OMAS GOLD MINE PROJECT ENVIRONMENTAL & SOCIAL COMMITMENTS
Environmental Social Impact Assessment

Subject	Commitment Details	Timeline	Related Section	Internal Document	External Document	Actions / Status
Road Safety	Given that the roads will only be used for project traffic (which will be very limited) it is not considered that the roads will cause significant hindrance to access. Speed limits and signs will be used to alert drivers to specific commonly used crossing points. Local residents will be given road safety awareness training.	Construction, operation, closure	ESIA Chapter 5, Section 5.8.2, page 16 EIA Chapter 5, Section 5.7.2, page 5-42	Stakeholder Engagement Plan Transport Management Plan Community Health, Safety and Security Management Plan	EBRD PR4, PR 10 IFC PS1, PS4 Highway Traffic Regulation	-Road safety trainings will be given to the communities including children and women. -Traffic signs and lines will be in place upon completion of the road construction. -Trainings were completed in Marc, 2018.
Transportation	A shuttle bus system will transport staff between the mine and residential areas for each shift (there will be three shifts per 24 hour period). The shuttle buses will be rented from a local services company. Personal vehicles will not be permitted on the mine site.	Operation	ESIA Chapter 5, Section 5.15.1, page 31	Transport Management Plan Community Health, Safety and Security Management Plan	EBRD PR4, PR 10 IFC PS1, PS4 Highway Traffic Regulation	-Shuttle bus and driver standards identified in Transport Management Plan. -The system will be implemented during operation for OMAS. -City will provide shuttles from local area for the construction phase.

Environmental and Social Action Plan

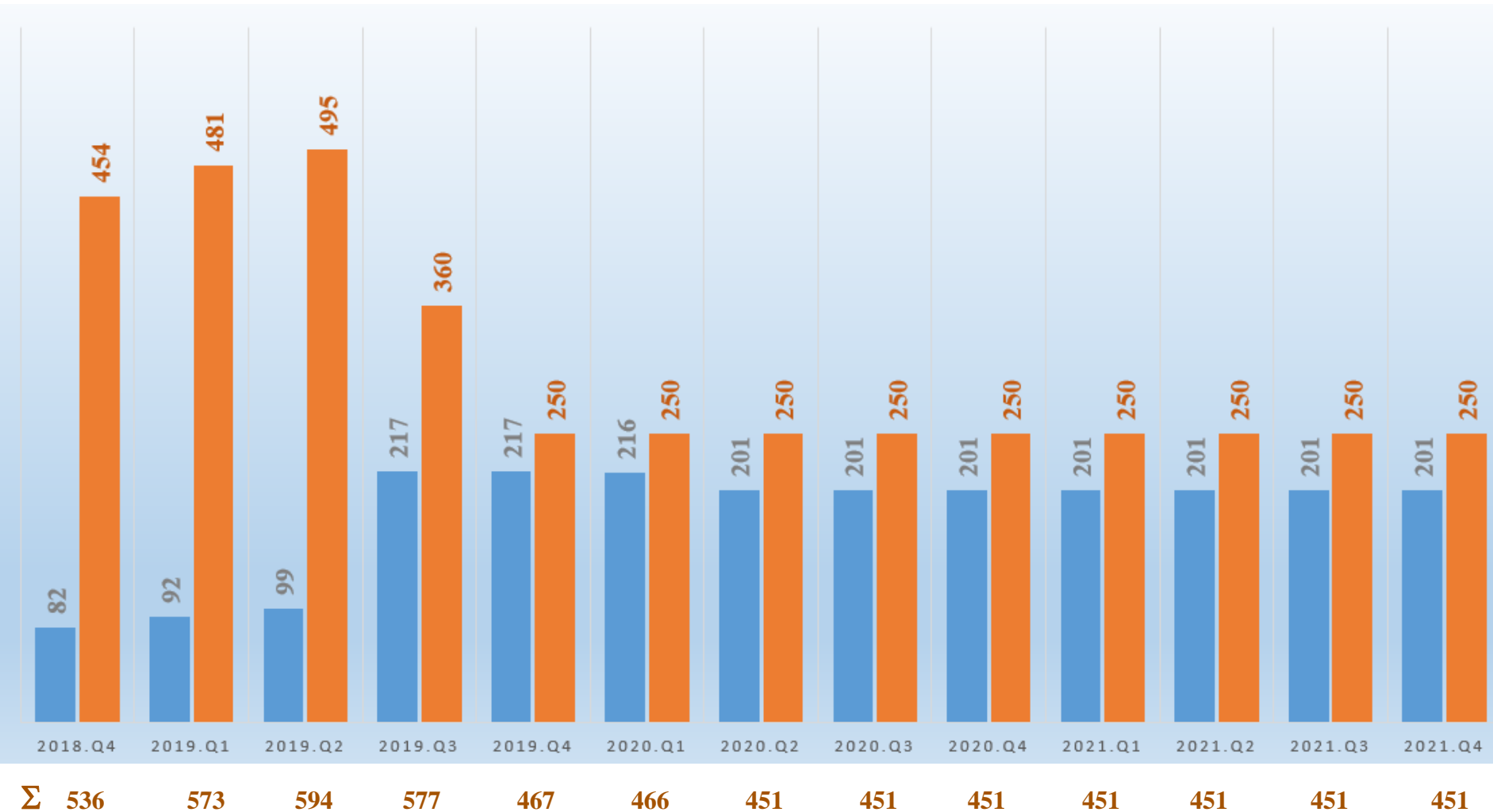
Updating the ESAP regularly;

No.	Action	Environmental & Social Risks (Liability/Benefits)	Requirements (Legislative, EBRD PR, IFC PS, Best Practice)	Resources	Timetable	Completion Indicator	Status
PR1 Assessment and Management of Environmental and Social Risks and Impacts							
1.1	Submit an environmental and social ² report to the Lenders ² on the environmental and social performance of the Project and the status of the implementation of this ESAP. This report may be compiled by the Company or by an independent environmental and social consultant approved or appointed by the Lenders.	Lender reporting requirement	EBRD PR 1 IFC PS1	Company ³ resources	During construction: Environmental and social report and ESAP progress update to the Lenders every six months for the duration of construction phase. During operation: Annual environmental and social report and ESAP progress update to the Lenders within 60 days of Company yearend for the duration of Lenders financing of the Project.	Environmental and social reports (template to be provided by the EBRD) and ESAP progress updates received. Reports and progress against this ESAP satisfactory to the Lenders.	Pending (Will start along with the construction)



HR & Training



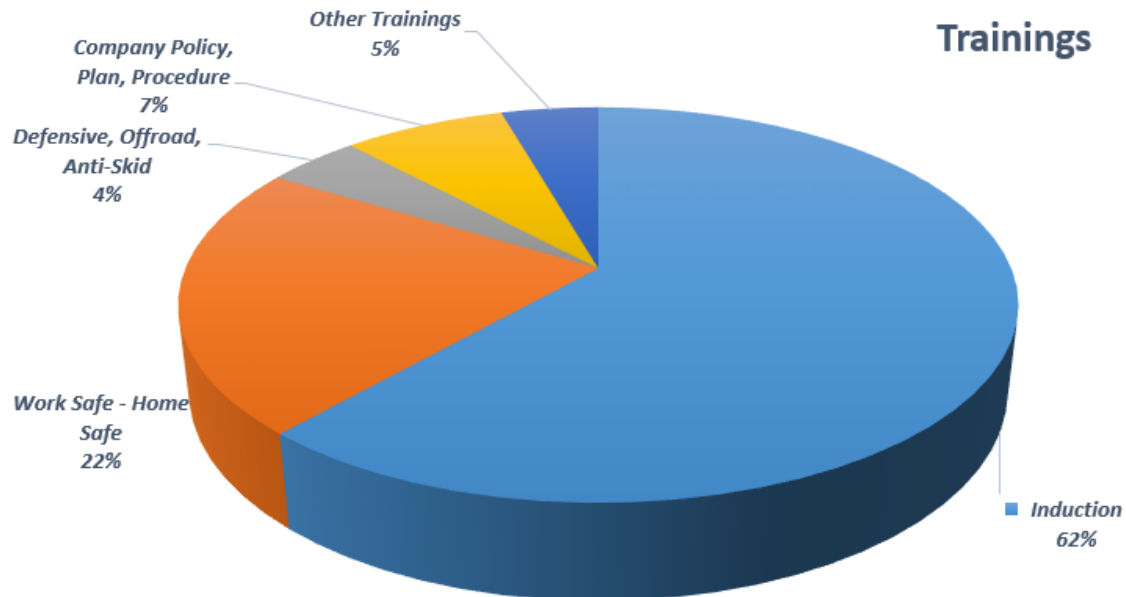


Manpower (Demographical & Skilled Base) as of November 5th, 2018

	OMAS			CFTY			BRKM			ACD			Others			Total
	Öksüt Madencilik			Çiftay			Birikim			ACD						
	Skilled	Semi-Skilled	UnSkilled	Skilled	Semi-Skilled	UnSkilled	Skilled	Semi-Skilled	UnSkilled	Skilled	Semi-Skilled	UnSkilled	Skilled	Semi-Skilled	UnSkilled	
Epçe	-	-	-	11	-	7	-	-	-	1	1	7	4	-	5	36
Zile	-	-	-	8	-	6	-	-	-	-	-	-	3	6	-	23
Öksüt	-	2	-	1	-	-	-	-	-	-	-	-	2	15	-	20
Yukarı Develi	-	-	1	5	-	4	-	-	-	-	-	-	3	7	2	22
Tombak	-	-	-	2	-	1	-	-	-	-	-	-	1	-	-	4
Gömedi	-	-	-	1	-	1	-	-	-	-	-	-	1	-	-	3
Gazi	-	-	-	-	-	1	-	-	-	-	-	-	1	1	-	3
Sarıca	-	-	-	1	-	-	-	-	-	-	-	-	1	1	-	3
Develi Town Center	11	-	8	94	2	10	4	-	5	6	-	4	26	4	17	191
Yazırbaşı	-	-	1	-	-	1	-	-	1	-	-	-	-	-	-	3
Yahyalı	-	-	-	33	-	1	2	-	1	1	-	1	-	-	1	40
Kayseri	5	-	-	26	-	-	-	-	-	7	-	1	9	1	-	49
Other Cities	43	-	-	58	2	-	49	1	-	32	-	-	69	4	-	258
Other Countries	2	-	-	-	-	-	-	-	-	-	-	-	1	-	-	3
Total	61	2	11	240	4	32	55	1	7	47	1	13	121	39	25	659
	74			276			63			61			185			

	Local	Others	Total	Local Percentage
Skilled	270	254	524	52%
Semi-Skilled	40	7	47	85%
Unskilled	88	0	88	100%
Total	398	261	659	60%

Trng Name	Training Man-Hour				
	2015	2016	2017	2018	Total
Induction	1,450	228	1,215	7,788	10,681
Work Safe - Home Safe	-	702	624	2,520	3,846
Defensive, Offroad, Anti-Skid	284	-	-	468	752
Company Policy, Plan, Procedure	21	41	1,042	192	1,296
Other Trainings	473	206	73	25	777
Total	2,228	1,177	2,954	10,993	17,352





THANK YOU!

Questions?
Issues!

