



# Middle School Program Planning Guide 2022-2023



Olathe Public Schools USD #233  
[www.olatheschools.org](http://www.olatheschools.org)

## Student Guiding Principles

### Honesty

Truthfulness to oneself and others in both words and actions



### Respect

Treating others as you wish to be treated

### Responsibility

Doing what you're supposed to do when it needs to be done, even when no one is watching

### Trustworthiness

Exhibiting dependable behaviors

Students Prepared for *Their* Future

## Parent/Patron Guiding Principles

### Positive Role Models

Setting a good example in words and actions



### Effective Communicators

Actively listening, seeking to understand and proactively interacting with children and other adults

### Respect For All

Treating all others as you wish to be treated

### Advocates For Education

Demonstrating the importance of learning and encouraging academic and personal excellence

### Active Involvement

Making children a priority by being informed and participating in all aspects of the lives of our children

Students Prepared for *Their* Future



## Staff/Board Guiding Principles

- Children First
- Respect for All
- Teamwork
- Excellence & Quality
- Commitment to Individual Needs



Students Prepared for *Their* Future

Olathe Public Schools is a partnership of staff, students, parents, and the community.

## Our Vision

Students prepared for *their* future!

## Our Mission

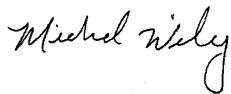
To provide a safe, positive environment where all students acquire knowledge and skills to be productive citizens.

Students Prepared for *Their* Future

# Welcome to Middle School!

We share your excitement as you begin the planning process for middle school. This Program Planning Guide has been developed to provide information for you and your parents to process together, discussing the required classes as well as the elective classes. You will note that middle school offers many opportunities to “explore” new areas of study. Depending on individual need and levels of development, you will have an opportunity to strengthen skills through advanced levels of course work as well as to take part in a wide range of academic support programs.

Middle level learning opportunities are exciting, enjoyable, and challenging. Administrators, counselors and teachers at each of the middle schools are available and ready to help you make the best choices for your next academic school year. We're excited about the many possibilities that are ahead for you and we look forward to helping you experience the very best that middle level education has to offer.



Mike Wiley  
California Trail  
13775 W. 133rd • Olathe  
780-7220



Rick Sola  
Chisholm Trail  
16700 W. 159th • Olathe  
780-7240



Dr. Rod Smith  
Frontier Trail  
15300 W. 143th • Olathe  
780-7210



Elizabeth Holland  
Indian Trail  
1440 E. 151st • Olathe  
780-7230



Dr. Rachelle Waters  
Mission Trail  
1001 N. Persimmon Dr. • Olathe  
780-7260



Justin Howe  
Oregon Trail  
1800 W. Dennis • Olathe  
780-7250



Dr. Julie Veatch  
Pioneer Trail  
15100 W. 127th • Olathe  
780-7270



Jenna Jones  
Prairie Trail  
21600 W. 107th • Olathe  
780-7280



J.J. Libal  
Santa Fe Trail  
1100 N. Ridgeview • Olathe  
780-7290



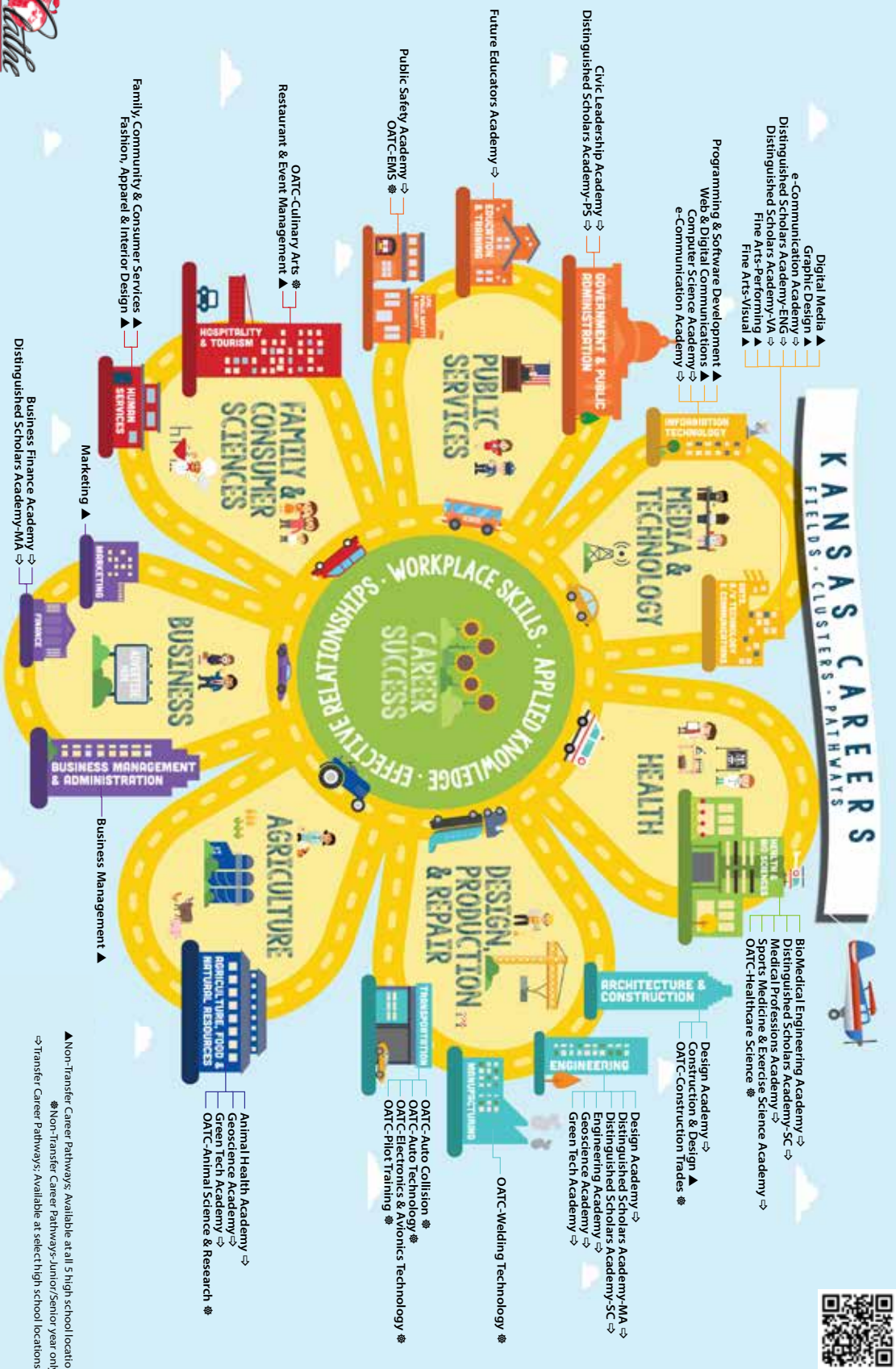
Heath Sigg  
Summit Trail  
22201 W 118th • Olathe  
780-7200



OLATHE PUBLIC SCHOOLS USD 233







▲Non-Transfer Career Pathways: Available at all 5 high school locations  
 \*Non-Transfer Career Pathways-Junior/Senior year only  
 ⇨Transfer Career Pathways: Available at select high school locations

Revised 7/12/2021



**The Middle School Day** Students attend seven 50-minute classes daily from 7:50 a.m. to 3:10 p.m., with an Academic Extension period for 30 minutes each day. The Academic Extension period is used for getting support/assistance from a teacher, small “targeted skill” group instruction, student clubs, homework, make-up work, pep assemblies and more. Students attending Santa Fe Trail will have a different schedule due to their participation as a Kansas Redesign School. Families should consult the Santa Fe Trail website or staff for further information.

**Teaming** Students are taught by a team of teachers who coordinate instruction and routines to address student needs. Teams are by grade level.

**Middle School Credits** Students earn one credit for each year-long class they earn passing grades in both semesters. For passing a semester-long class, they earn .5 credit. Only 6th graders are offered quarter-long elective courses, for which they may earn .25 credit per quarter.

## Required Courses: What do I enroll in?

Sixth graders must take 5.5 - 6 credits of required classes, and 7th and 8th graders 5 - 5.5 credits of required classes.

Required classes include:

**\*Four Core Subjects** Every student takes a “core” curriculum of four year-long classes in language arts, math, science, and social studies. Of these core subjects, math is differentiated by a general and advanced level at each grade. Students will be placed in math based on the following district criteria: 1) district and state assessment results, 2) MAP scores, 3) current course performance.

**\*Reading** In addition to their core subjects, students take a required reading class every year. Most take a semester-long Literacy course at each grade level for students reading at grade level and higher. Some students reading below grade level are placed in a year-long reading class to focus on improving their skills. Students’ prior performance on reading and writing tasks is considered when determining their reading class placement.

**\*Physical Education and Health** Health is integrated into students’ physical education classes. Sixth graders take a year-long Physical Education/Health class, while 7th and 8th graders take P.E./Health one semester of each school year. Students selected for the dance team or cheerleading squad during 7th and/or 8th grades substitute a year-long Cheerleading/Health class or Dance Team/Health class for their semester-long P.E./Health class.

**\*Academic Support Classes** Teachers, parents, and students may decide that students would benefit from academic support or enrichment beyond the required courses.

- Students with special education I.E.P.s—Individual Education Plans—may take a period of a Resource class, as specified in the student’s I.E.P.
- Other students who need additional academic or organizational support may be directed to a specialized academic support class.
- Students learning English may take ELL—English Language Learner—classes.  
To access these classes, contact a middle school counselor.

**Elective Courses** After required courses are scheduled, sixth graders have up to 1.5 periods remaining in which to enroll in elective courses. Seventh and eighth graders have up to 2 class periods remaining for electives. Students request elective courses as well as elective course alternates, to be used if first-choice courses conflict or are unavailable. Seventh and eighth graders share most elective courses. Elective courses successfully completed typically may not be repeated; exceptions may include Communications/Multi-Media, Theatre, Vocal and Instrumental music depending on building availability.

# Overview of Middle School Courses Grades 6-8

## Grade 6

### CORE (Required)

Language Arts 6  
Literacy 6 (.5)  
Math 6 or Math 6 Plus  
Science 6  
Social Studies 6

### Physical Education/Health (Required)

Physical Education/Health (1.0)

### Academic Support

ELL  
Guided Study  
Math 180  
QUEST (gifted)  
Reading 6 (.5 to 1.0)  
Resource

### Elective Courses

Band 6 (1.0)  
Choir (.5 or 1.0)  
Communications/Multi-Media 6 (.25)  
Computer 6 (.25)  
Exploring Art (.25)  
Flight & Space (.25)  
Focus On FACS (.25)  
French 6 (.25)  
Leadership Today 6 (.25)  
Orchestra 6 (1.0)  
Spanish 6 (.25)  
Theatre 6 (.25)

## Grade 7

### CORE (Required)

Language Arts 7  
Literacy 7 (.5)  
Math 7 or Math 7 Plus  
Science 7  
Social Studies 7

### Physical Education/Health (Required)

Physical Education/Health (.5)  
Cheerleading/Health (1.0)  
Dance Team/Health (1.0)

### Academic Support

ELL  
Guided Study  
Math 180  
QUEST (gifted)  
Reading 7 (.5 to 1.0)  
Resource

### Elective Courses

Art I (.5)  
Art II (.5)  
Automation and Robotics (.5)  
Band 7 (1.0)  
Career and Life Planning (.5)  
Choir - Tenor/Bass (1.0)  
Choir - Treble (1.0)  
Choir Ensemble (1.0)  
Communications/Multi-Media (.5)  
Computer I (.5)  
Computer II (.5)  
Design & Modeling (.5)  
Focus on French (.5)  
Focus on Spanish (.5)  
Innovations in Computer Coding and App  
Creating (.5)  
Introduction to Apparel Production (.5)  
Introduction to Culinary I (.5)  
Introduction to Culinary II (.5)  
Introduction to Fashion, Apparel & Interior  
Design (FAID) (.5)  
Jazz Band (.5)  
Leadership Concepts (.5)  
Orchestra 7 (1.0)  
Spanish for Heritage Speakers (.5)  
Stagecraft (.5)  
Theatre I (.5)  
Theatre II (.5)

## Grade 8

### CORE (Required)

Language Arts 8  
Literacy 8 (.5)  
Math 8 or Algebra I  
Science 8  
Social Studies 8

### Physical Education/Health (Required)

Physical Education/Health (.5)  
Cheerleading/Health (1.0)  
Dance Team/Health (1.0)

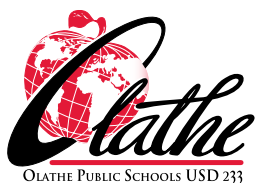
### Academic Support

ELL  
Guided Study  
Math 180  
QUEST (gifted)  
Reading 8 (.5 to 1.0)  
Resource

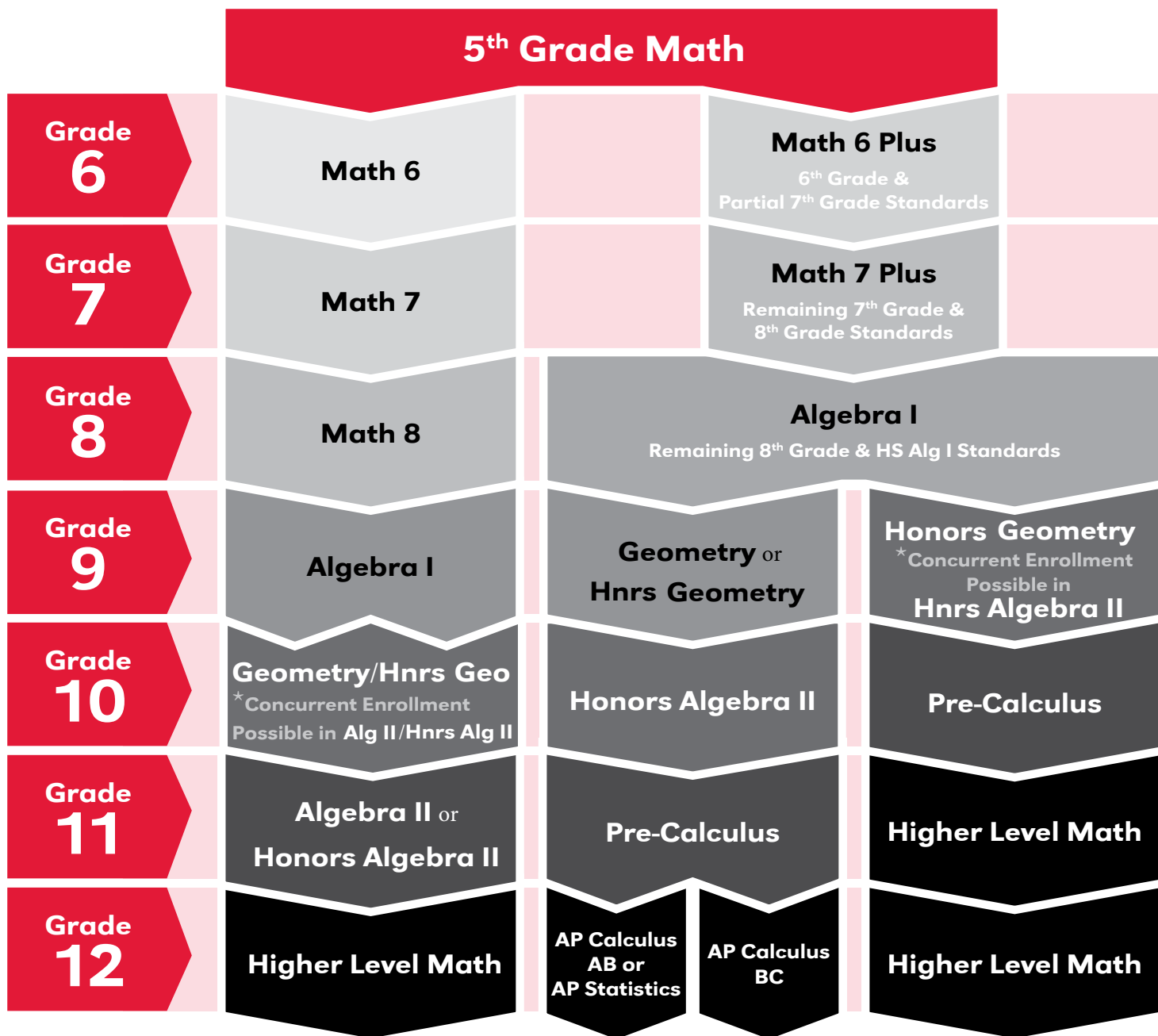
### Elective Courses

AIM 8 (1.0)  
Art I (.5)  
Art II (.5)  
Art III (.5)  
Automation and Robotics (.5)  
Band 8 (1.0)  
Career and Life Planning (.5)  
Choir - Tenor/Bass (1.0)  
Choir - Treble (1.0)  
Choir Ensemble (1.0)  
Communications/Multi-Media (.5 or 1.0)  
Computer I (.5)  
Computer II (.5)  
Design & Modeling (.5)  
Focus on French (.5)  
Focus on Spanish (.5)  
French I (1.0)  
Innovations in Computer Coding and App  
Creating (.5)  
Introduction to Apparel Production (.5)  
Introduction to Culinary I (.5)  
Introduction to Culinary II (.5)  
Introduction to Fashion, Apparel & Interior  
Design (FAID) (.5)  
Introduction to Materials & Processes (.5)  
Jazz Band (.5)  
Leadership Concepts (.5)  
Leadership Exploration (.5)  
Orchestra 8 (1.0)  
Spanish I (1.0)  
Spanish for Heritage Speakers (.5)  
Stagecraft (.5)  
Theatre I (.5)  
Theatre II (.5)  
Yearbook (.5-1.0)

**Electives are offered based on student request and building staffing. Not all electives may be offered in every building.**



# Secondary Math Course Sequence



## Higher Level Math Courses Offered For College Credit:

- College Algebra (Year-Long course)
- Pre-Calculus (Year-Long course)
- AP Calculus (AB/BC) (Year-Long course)
- AP Statistics (Year-Long course)  
*(AP Statistics may be taken concurrently during Senior Year)*

## Higher Level Math Courses Not Offered For College Credit:

- Linear Algebra (Semester Course)
- Multivariable Calculus (Semester Course)

Students in the non-accelerated pathway have all options and opportunities available to them in high school and college. Being on a regular math pathway does not limit a student and being on an accelerated math pathway does not provide an advantage for 21st century academies or college admission.



## Middle School Courses that lead to High School Career Pathways or 21st Century Academies

Students often wonder what courses they can take in middle school in order to be prepared for a high school career pathway or 21st century academy. The best preparation for participation in these courses at the high school level is to learn as much as possible in ALL classes while in middle school and learn study skills that will facilitate success in all future areas. If searching for electives, the list below can be used as a guide. If you do not see a pathway or 21st century academy that you are interested in listed below, don't worry. Although there is not a middle school elective class with a direct link to that area, all middle school electives will help prepare for eventual participation. Undecided students are encouraged to try a world language or a fine arts elective which prepares for all high school options.

### Aviation Electronics Pathway

Automation & Robotics  
Computers 6  
Computer I & II  
Design & Modeling  
Flight & Space  
Innovations in Computer Coding and App Creating  
Introduction to Materials & Processes

### BioMedical Engineering Academy

Automation & Robotics  
Computer 6  
Computer I & II  
Design & Modeling  
Introduction to Materials and Processes

### Business Finance Pathway

Math 6,7,8

### Civic Leadership Academy

Leadership Today 6  
Leadership Concepts  
Leadership Exploration

### Computer Science Academy

Computer 6  
Computer I & II  
Innovations in Computer Coding and App Creating

### Construction & Design Pathway

Design & Modeling  
Introduction to Fashion, Apparel & Interior Design (FAID)  
Introduction to Materials & Processes

### Design Academy

Art I & II & III  
Automation & Robotics  
Design & Modeling  
Exploring Art  
Introduction to Fashion, Apparel & Interior Design (FAID)  
Introduction to Materials & Processes

### Digital Media Pathway

Art I & II & III  
Communications/Multi-Media 6  
Computers 6  
Communications/Multi-Media  
Computer I & II  
Yearbook

### e-Communication Academy

Communication/Multi-Media 6  
Communications/Multi-Media  
Computer 6  
Computer I & II

### Energy Pathway

Computer 6  
Computer I & II  
Design & Modeling  
Flight & Space  
Introduction to Materials & Processes

### Engineering Academy & Engineering & Applied Mathematics Pathway

Automation & Robotics  
Design & Modeling  
Flight & Space  
Introduction to Materials and Processes

### Family, Community & Consumer Services Pathway

Career and Life Planning  
Focus on FACS

### Fashion, Apparel, Interior Design (F.A.I.D.) Pathway

Art I & II & III  
Focus on FACS  
Introduction to Apparel Production  
Introduction to Fashion, Apparel, & Interior Design (FAID)

### Future Educators Academy & Government & Public Administration Pathway

Career and Life Planning

### Green Tech Academy

Automation & Robotics  
Design & Modeling  
Flight & Space  
Introduction to Materials & Processes

### Manufacturing & Production Pathway & Mobile Equipment Maintenance

Design & Modeling  
Introduction to Materials & Processes

### Program & Software Development Pathway

Computer 6  
Computer I & II  
Innovations in Computer Coding and App Creating

### Public Safety Academy

Focus on Spanish  
Spanish 6  
Spanish I

### Restaurant & Event Management Pathway

Focus on FACS  
Introduction to Culinary I & II

### Teaching/Training

Career and Life Planning  
Focus on FACS

### Visual Arts—FAID—Fashion, Apparel, Interior Design Pathway

Focus on FACS  
Introduction to Apparel Production  
Introduction to Fashion, Apparel, & Interior Design (FAID)

### Graphic Design Pathway AND Web & Digital Communications Pathway

Art I & II & III  
Communication/Multi-Media 6  
Communications/Multi-Media  
Computer 6  
Computer I & II

### For science-based academies (Animal Health, Geoscience, Medical Professions, and Sports Medicine & Exercise Science) not listed above,

students are advised to focus on their core classes, especially math and science classes. Additionally, having experience with technology and computer programming is recommended.

### Distinguished Scholars should excel in one or more of the following areas:

English 6,7,8  
Exploring Art 6, Stagecraft 7,8, Art I, II, III  
Math 6,7,8  
Science 6,7,8  
Social Studies 6,7,8



## CORE

### Language Arts 6 LA 000 A/B

Grade Level: 6  
Two Semesters - 1.0 credit

This course is the beginning of the secondary language arts program. It includes the study of literature and relevant informational text. Effective reading, writing, speaking and listening, and language skills are developed through reading and analyzing complex text. Students will produce argumentative, informational/explanatory, and narrative writing for a variety of purposes. This writing will be grounded in claims and supported with evidence from the text.

### Math 6 MA 000 A/B

Grade Level: 6  
Two Semesters - 1.0 credit

This course focuses on mathematical practices and four critical areas of content: 1) connecting fractions to ratio and rate along with solving problems; 2) completing understanding of division of fractions and extending the notion of number to the system of rational numbers, which includes negative numbers; 3) writing, interpreting, and using expressions and equations; and 4) developing understanding of statistical thinking. This course stresses the depth and rigor for future math course success.

### Math 6 Plus MA 006 A/B

Grade Level: 6  
Two Semesters - 1.0 credit

This course combines all of the Kansas College and Career Standards for Mathematics for Grade 6 and some Grade 7 standards into one course. The standards are bundled by units from decimal computation to algebraic skills such as equations and expressions. The mathematical practices are applied to proportional reasoning, operations with rational numbers, linear equations, and real-world applications. **Enrollment Note: Students will be placed in this course based on the following district criteria: 1) district and state assessment results, 2) MAP scores, 3) current course performance.**

### Science 6 SC 000 A/B

Grade Level: 6  
Two Semesters - 1.0 credit

This course will introduce students to basic chemistry, along with an exploration of earth-space concepts and human body systems. Conducted in a laboratory setting, this course emphasizes investigative science and activity-based learning.

### Social Studies 6 SS 000 A/B

Grade Level: 6  
Two Semesters - 1.0 credit

Social Studies 6 focuses on an exploration of the ancient civilizations of the world and the civilizations of Middle America through the lens of history, geography, economics, religion, and government.

## Academic Support

### Literacy 6 LA 120

Grade Level: 6  
One Semester - 0.5 credit

This course is designed to support the work of the 6th grade subject areas by using the literacies of the different disciplines and incorporating them into the areas of reading, writing, and speaking and listening. Students will demonstrate their knowledge of the different literacies through different methods including writing, projects, discussions, and presentations. This work in this course is focused on close reading and high levels of critical thinking. **Enrollment Note: Students are placed in a Reading course each year based upon district criteria.**

### Math 180 MA 026 MA 026 A/B

Grade Level: 6, 7, 8  
One or Two Semesters - 0.5-1.0 credit

This course offers intensive instruction to improve basic math skills in terms of concept development, application, and fluency based on individual student needs. **Enrollment Note: Students are placed into this class based on district criteria.**

### Reading 6 WW 349 WW 349 A/B

Grade Level: 6  
One or Two Semesters - 0.5-1.0 credit

This course offers intensive instruction to improve basic reading skills in terms of comprehension, vocabulary, and fluency based on individual student needs. Students will also choose reading material based on interest and reading level. **Enrollment Note: Students are placed into this class based on district criteria.**

## Physical Education & Health

### Physical Education/Health PE 010 A/B

Grade Level: 6  
Two Semesters - 1.0 credit

The goal of Physical Education/Health is to develop physically and healthy individuals who have the knowledge, skills and confidence to enjoy a lifetime of healthful physical activity and engage in healthful behaviors.

# Grade 6 Courses - Electives

<b>Band 6</b>	PA 000 A/B	<b>Focus on FACS 6</b>	HE 000
<p>Grade Level: 6 Two Semesters - 1.0 credit</p> <p>Students may have had prior band experience in 5th grade or start as beginners. <b>Enrollment Note: Throughout the year, attendance is required at performances and rehearsals, which may be scheduled before/after school, in the evening and on weekends. Regular at-home practice will be required as a graded assignment. Students must provide their own instrument. A uniform purchase may be required. Financial assistance is available to those who qualify.</b></p>		<p>Grade Level: 6 One Quarter - 0.25 credit</p> <p>This course introduces students to basic cooking &amp; nutrition, basic sewing, and personal/family relationships. Additionally, students will learn child care while learning to be a good friend and family member along with related career opportunities.</p>	
<b>Choir</b>	PA 100 A/B	<b>French 6</b>	FL 000
<p>Grade Level: 6 One or Two Semesters - 0.5-1.0 credit</p> <p>Students will discover the joy of singing while building relationships that last a lifetime. Singers will build confidence and skills that prepare them for future success. <b>Enrollment Note: Throughout the year, attendance is required at performances and rehearsals, which may be scheduled before/after school, in the evening, and on weekends. Home practice may be required as a graded assignment. A uniform purchase may be required. Financial assistance is available to those who qualify.</b></p>		<p>Grade Level: 6 One Quarter - 0.25 credit</p> <p>This course introduces students to the French language and culture around the world. Students learn vocabulary and phrases related to daily life and personal interests.</p>	
<b>Communications/Multi-Media 6</b>	LA 135	<b>Leadership Today 6</b>	YA 295
<p>Grade Level: 6 One Quarter - 0.25 credit</p> <p>This course will expose students to increased speech, interpersonal communications, media, and introductory journalism skills. Writing skills will also be addressed.</p>		<p>Grade Level: 6 One Quarter - 0.25 credit</p> <p>This course examines past and present leaders in a variety of fields. Students are introduced to leadership skills and concepts.</p>	
<b>Computer 6</b>	CP 000	<b>Orchestra 6</b>	PA 060 A/B
<p>Grade Level: 6 One Quarter - 0.25 credit</p> <p>Impress your friends and family with the newest and most exciting technologies! This course introduces students to the basic areas of technology through the use of fun projects and activities such as: Web 2.0 tools, Paint, email, internet, Microsoft Word, Excel, PowerPoint, Publisher, and typing skills. This is a great class that prepares students for future computer courses.</p>		<p>Grade Level: 6 Two Semesters - 1.0 credit</p> <p>Students may have had prior orchestra experience in 5th grade or start as beginners. <b>Enrollment Note: Attendance is required at all rehearsals and performances. Regular at-home practice will be required as a graded assignment. Students on violin, viola, and cello must furnish their own instrument. A uniform purchase may be required. Financial assistance is available to those who qualify.</b></p>	
<b>Exploring Art</b>	AR 000	<b>Spanish 6</b>	FL 010
<p>Grade Level: 6 One Quarter - 0.25 credit</p> <p>Students will explore a variety of 2-D and 3-D media. Basic techniques and an overview of artistic materials will be stressed. The emphasis will be on developing the student's creativity and imagination.</p>		<p>Grade Level: 6 One Quarter - 0.25 credit</p> <p>This course introduces students to the Spanish language and the Hispanic culture around the world. Students learn vocabulary and phrases related to daily life and personal interests.</p>	
<b>Flight &amp; Space</b>	IT 020	<b>Theatre 6</b>	PA 150M
<p>Grade Level: 6 One Quarter - 0.25 credit</p> <p>The exciting world of aerospace comes alive through the Flight and Space class. Students become engineers as they design, prototype, and test models to learn about the science of flight and what it takes to travel and live in space. Students will solve real-world aviation and space challenges.</p>		<p>Grade Level: 6 One Quarter - 0.25 credit</p> <p>Enter the thrilling and interactive world of theatre. This class will help build self-confidence and creative expression through introductory acting techniques, dramatic movement and vocal work.</p>	

# Grade 7 Courses - Required

## CORE

### Language Arts 7

LA 010 A/B

Grade Level: 7  
Two Semesters - 1.0 credit

This course includes the study of literature and relevant informational text. Effective reading, writing, speaking and listening, and language skills are developed through reading and analyzing complex text. Students will produce argumentative, informational/explanatory, and narrative writing for a variety of purposes. This writing will be grounded in claims and supported with evidence from the text.

### Math 7

MA 010 A/B

Grade Level: 7  
Two Semesters - 1.0 credit

This course emphasizes mathematical practices applied to the following critical areas: developing understanding and application of proportional relationships, operations with rational numbers, working with expressions and linear equations, solving problems involving scale drawings and geometric constructions, as well as working with 2D and 3D shapes to solve problems involving area, surface area, and volume.

### Math 7 Plus

MA 017 A/B

Grade Level: 7  
Two Semesters - 1.0 credit  
Prerequisite: Math 6 Plus

This course combines the remainder of the Kansas College and Career Standards for Mathematics for Grade 7 and the majority of the Grade 8 Standards into one course. The standards are bundled by units from real number computation to algebraic skills such as equations and functions. The mathematical practices are applied to the real number system, equations, statistic and probability, geometry, and real-world applications.

### Science 7

SC 010 A/B

Grade Level: 7  
Two Semesters - 1.0 credit

This course will explore life processes and environmental studies. Conducted in a laboratory setting, this course emphasizes investigative science and activity-based learning.

### Social Studies 7

SS 010 A/B

Grade Level: 7  
Two Semesters - 1.0 credit

This course includes a semester of geography that examines the world, and a semester of Kansas history and government.

## Academic Support

### Literacy 7

LA 121

Grade Level: 7  
One Semester - 0.5 credit

This course is designed to support the work of the 7th grade subject areas by using the literacies of the different disciplines and incorporating them into the areas of reading, writing, and speaking and listening. Students will demonstrate their knowledge of the different literacies through different methods including writing, projects, discussions, and presentations. This work in this course is focused on close reading and high levels of critical thinking. **Enrollment Note: Students are placed in a Reading course each year based upon district criteria.**

### Math 180

MA 027  
MA 027 A/B

Grade Level: 6, 7, 8  
One or Two Semesters - 0.5-1.0 credit

This course offers intensive instruction to improve basic math skills in terms of concept development, application, and fluency based on individual student needs. **Enrollment Note: Students are placed into this class based on district criteria.**

### Reading 7

WW 350  
WW 350 A/B

Grade Level: 7  
One or Two Semesters - 0.5-1.0 credit

This course offers intensive instruction to improve basic reading skills in terms of comprehension, vocabulary, and fluency based on individual student needs. Students will also choose reading material based on interest and reading level. **Enrollment Note: Students are placed into this class based on district criteria.**

## Physical Education & Health

### Cheerleading/Health

PE 140 A/B

Grade Level: 7, 8  
Two Semesters - 1.0 credit

Admission to this course is by audition only. Grades and citizenship must be in compliance with the Kansas State High School Activities Association. The class emphasizes cheerleading skills and technique, conditioning, leadership, and squad unity. This course satisfies the physical education requirement. The health curriculum will also be delivered to students enrolled in this course.

### Dance Team/Health

PE 150 A/B

Grade Level: 7, 8  
Two Semesters - 1.0 credit

Admission to this course is by audition only. Grades and citizenship must be in compliance with the Kansas State High School Activities Association in order to audition. The class includes choreographing and learning routines, performing at various functions, and attending extra rehearsals. This course satisfies the physical education requirement. The health curriculum will also be delivered to students enrolled in this course.

### Physical Education/Health

PE 110

Grade Level: 7  
One Semester - 0.5 credit

The goal of Physical Education/Health is to develop physically and healthy individuals who have the knowledge, skills and confidence to enjoy a lifetime of healthful physical activity and engage in healthful behaviors.

# Grade 7 Courses - Electives

## Art I

AR 110M

Grade Level: 7, 8  
One Semester - 0.5 credit

This introductory art course is designed to provide seventh and eighth grade students an opportunity to experience drawing, painting, printmaking, ceramics, and sculpture. The Elements of Art, artists, and art history will provide a framework for this experience.

## Art II

AR 120

Grade Level: 7, 8  
One Semester - 0.5 credit  
Prerequisite: Art I

This course is designed for both seventh and eighth grade students who will be building on what they learned in Art 1. There will be an emphasis on the Elements of Art and Principles of Design while creating a variety of 2-D and 3-D projects.

## Automation & Robotics

IT 395

Grade Level: 7, 8  
One Semester - 0.5 credit

Students learn about the history and impact of automation and robotics as they explore mechanical systems, energy transfer, machine automation, and computer control systems. Using the VEX Robotics® platform, students apply what they know to design and program traffic lights, robotic arms, and more.

## Band 7

PA 020 A/B

Grade Level: 7  
Two Semesters - 1.0 credit  
Prerequisite: Band 6 or permission by instructor

This course is open to all 7th grade band students and focuses on the continued development of instrument and performance techniques. **Enrollment Note: Throughout the year, attendance is required at performances and rehearsals, which may be scheduled before/after school, in the evening and on weekends. Regular at-home practice will be required as a graded assignment. Students must provide their own instrument. A uniform purchase may be required. and financial assistance is available for those who qualify.**

## Career and Life Planning

BU 140

Grade Level: 7, 8  
One Semester - 0.5 credit

This class develops knowledge and skills and explores attitudes needed for success in school and the workplace. Students explore topics relating to identifying their own interests, career possibilities, pre-employment skills, workplace skills, and educational goals. This class will have guest speakers. Students in this class are introduced to the career clusters and Olathe's High School Pathway and Academy options.

## Choir Ensemble

PA 145 A/B

Grade Level: 7, 8  
Two Semesters - 1.0 credit

This advanced choral experience focuses on progressive ensemble skills, vocal techniques, and music literacy skills. Independent singing, vocal technique, and sight singing skills will be developed. **Enrollment Note: An audition may be required for this course. Throughout the year, attendance is required at performances and rehearsals which may be scheduled before/after school, in the evening, and on weekends. Home practice may be required as a graded assignment. A uniform purchase may be required. and financial assistance is available for those who qualify.**

## Choir - Tenor/Bass

PA 120 A/B

Grade Level: 7, 8  
Two Semesters - 1.0 credit

This class focuses on intermediate to advanced study of vocal technique, sight singing, and ensemble performance practices. **Enrollment Note: An audition may be required for this course. Throughout the year, attendance is required at performances and rehearsals which may be scheduled before/after school, in the evening, and on weekends. Home practice may be required as a graded assignment. A uniform purchase may be required. Financial assistance is available for those who qualify.**

## Choir - Treble

PA 140 A/B

Grade Level: 7, 8  
Two Semesters - 1.0 credit

This class focuses on advanced study of vocal technique, sight singing, and ensemble performance practices. **Guided Enrollment Note: Throughout the year, attendance is required at performance and rehearsals, which may be scheduled before/after school, in the evening, and on weekends. Home practice may be required as a graded assignment. A uniform purchase may be required but financial assistance is available for those who qualify.**

## Communications/Multi-Media

LA 140

Grade Level: 7, 8  
One Semester - 0.5 credit

The focus of this course is improving communication skills through oral and written language. Students will study journalism, write articles, and produce the school newspaper.

## Computer I

CP 400M

Grade Level: 7, 8  
One Semester - 0.5 credit

This is a project-based course which helps prepare students to use technology and provides further experiences with word processing, spreadsheets, presentations and graphical applications. Course content is updated frequently to reflect new technologies.

# Grade 7 Courses - Electives

13

## Computer II

CP 410M

Grade Level: 7, 8  
One Semester - 0.5 credit  
Prerequisite: Computer I

This course is designed to help students build on what they learned in Computer I. This class expands students' knowledge of computer software. Course content is updated frequently to reflect new technologies.

## Design & Modeling

IT 391

Grade Level: 7, 8  
One Semester - 0.5 credit

Students discover the design process and develop an understanding of the influence of creativity and innovation in their lives. They are then challenged and empowered to use and apply what they've learned throughout the class to design a product with a real-world impact.

## Focus on French

FL 100

Grade Level: 7, 8  
One Semester - 0.5 credit

Students explore French countries, focusing on their cultural differences, holidays, and customs. Students interact with vocabulary and phrases related to daily life and personal interests.

## Focus on Spanish

FL 110

Grade Level: 7, 8  
One Semester - 0.5 credit

Students explore Spanish-speaking countries, focusing on their cultural differences, holidays, and customs. Students interact with vocabulary and phrases related to daily life and personal interests.

## Innovations in Computer Coding and App Creating

CP 120

Grade Level: 7, 8  
One Semester - 0.5 credit

This course will allow students to discover computer science concepts and skills by creating projects and developing mobile apps. Students will learn about programming by blending hardware design and software development. Students will customize their experience by choosing a problem that interests them.

## Introduction to Apparel Production

HE 160

Grade Level: 7, 8  
One Semester - 0.5 credit

This introductory level course gives students an opportunity to learn the basics of sewing and proper machine use. Students will learn safe use of a sewing machine and specific equipment, textile selection, and basic construction techniques. Through hands-on projects and presentations students will learn how to create designs for home and personal use.

**Enrollment Note: Students will furnish their own supplies for individual projects.**

## Introduction to Culinary I

HE 130

Grade Level: 7, 8  
One Semester - 0.5 credit

This course will introduce students to skills and knowledge in the areas of kitchen and meal management. Safety, sanitation, lab management, and nutrition are emphasized in each unit. Cooking lab experiences will include baking, preparing protein, fresh produce, and international foods.

## Introduction to Culinary II

HE 140

Grade Level: 7, 8  
One Semester - 0.5 credit

Students will learn proper cooking and preparation techniques, scientific principles relating to recipes, and the role each plays in a healthy diet. Basics of kitchen management and safety are integral to each preparation lab. Healthy food choices are emphasized in each unit.

## Introduction to Fashion, Apparel & Interior Design (FAID)

HE 170

Grade Level: 7, 8  
One Semester - 0.5 credit

This introductory level course gives students an opportunity to learn the basics of the design industry with special focus on fashion, interiors and apparel. Through hands-on projects and presentations, students will learn about the basics of color, fashion history, design principles, textile selection, fashion basics, entrepreneurship and careers in design fields. **Enrollment Note: Students will furnish their own supplies for individual projects.**

## Jazz Band

PA 050

Grade Level: 7, 8  
One Semester - 0.5 credit  
Prerequisite: Band 6 or permission by instructor

Concurrent enrollment in Band 7/8 or Orchestra 7/8 is required. This course provides students with strong fundamental skills covered in the concert band classes, with an introduction to various jazz styles, solo improvisation, and performance opportunities. **Enrollment Note: Throughout the year, attendance is required at performances and rehearsals, which may be scheduled before/after school, in the evening and on weekends. Regular at-home practice will be required as a graded assignment. Students must provide their own instrument. A uniform purchase may be required. Financial assistance is available for those who qualify.**

## Leadership Concepts

YA 300

Grade Level: 7, 8  
One Semester - 0.5 credit

This class introduces students to the various types of leaders and models of leadership. Students will participate in team building activities and develop their knowledge of leadership skills and concepts. Students will research and propose solutions to building-level issues.



# Grade 7 Courses - Electives

## Orchestra 7

PA 070 A/B

Grade Level: 7

Two Semesters - 1.0 credit

Prerequisite: Orchestra 6 or permission by instructor

This course is open to all students who play violin, viola, cello and string bass. Students should be starting their third year of instruction.

**Enrollment Note: Attendance is required at all rehearsals and performances. Regular at-home practice will be required as a graded assignment. Students on violin, viola, and cello must furnish their own instrument. A uniform purchase may be required. Financial assistance is available for those who qualify.**

## Spanish for Heritage Speakers

FL 120

Grade Level: 7, 8

One Semester - 0.5 credit

This course is designed specifically for students who have already gained speaking and listening proficiency in Spanish in a home or other community setting or in a previous school setting outside of the United States. Students will strengthen their reading and writing skills in Spanish through study and discussion of language structure, cultural and current events, and academic language. This class is conducted entirely in Spanish. Students may be asked to complete a language assessment to determine proper placement in this course. **Enrollment Note: Students may take this course in both 7th and 8th grade if desired. This course may not be offered at all middle schools.**

## Stagecraft

PA 180

Grade Level: 7, 8

One Semester - 0.5 credit

Students will take a look behind the scenes in this technical theatre course. Students get hands-on experience with design, scenic painting, costumes, makeup, prop construction, and other aspects of production work.

## Theatre I

PA 160

Grade Level: 7, 8

One Semester - 0.5 credit

Explore the multi-faceted world of theatre in this introductory class. Students will cultivate self-expression and confidence through a collaborative look at movement, acting techniques, and performance. Students will also improve their creative thinking and analytical skills through scriptwriting and interpretation.

## Theatre II

PA 190

Grade Level: 7, 8

One Semester - 0.5 credit

Prerequisite: Theatre I

This class is an in-depth course that builds upon the skills and techniques learned in Theatre I. This class will challenge students' leadership and creativity as they collaborate in theatre projects such as scene work, playwriting, play production, script analysis, and character development.

## CORE

### Algebra I

MA 520 A/B

Grade Level: 8  
Two Semesters - 1.0 credit  
Prerequisite: Math 7 Plus

Students engage in methods for analyzing, solving, and using quadratic functions. Students experience mathematics as a coherent, useful, and logical subject that makes use of problem solving skills. Students will analyze and explain the process of solving an equation as well as write, interpret, and translate between various forms of linear equations and inequalities.

### Language Arts 8

LA 110 A/B

Grade Level: 8  
Two Semesters - 1.0 credit

This course includes the study of literature and relevant informational text. Effective reading, writing, speaking and listening, and language skills are developed through reading and analyzing complex text. Students will produce argumentative, informational/explanatory, and narrative writing for a variety of purposes.

### Math 8

MA 110 A/B

Grade Level: 8  
Two Semesters - 1.0 credit

Students continue to build an algebra foundation from earlier grades. This course embeds the mathematical practices throughout learning. Instruction will focus on an in-depth study of expressions and equations leading to linear equations. The concept of a function will be formalized to prepare students for Algebra 1. The course ends with geometric concepts of angles, distance, similarity, scatter plots, congruence and applying the Pythagorean Theorem.

### Science 8

SC 110 A/B

Grade Level: 8  
Two Semesters - 1.0 credit

This course explores the science of the dynamic earth and the universe, along with an integration of basic chemistry. Conducted in a laboratory setting, this course emphasizes investigative science and activity-based learning.

### Social Studies 8

SS 110 A/B

Grade Level: 8  
Two Semesters - 1.0 credit

This course focuses on American history from the end of the American Revolution to 1900.

## Academic Support

### Literacy 8

LA 122

Grade Level: 8  
One Semester - 0.5 credit

This course is designed to support the work of the 8th grade subject areas by using the literacies of the different disciplines and incorporating them into the areas of reading, writing, and speaking and listening. Students will demonstrate their knowledge of the different literacies through different methods including writing, projects, discussions, and presentations. The work in this course is focused on close reading and high levels of critical thinking. **Enrollment Note: Students are placed in a Reading course each year based upon district criteria.**

### Math 180

MA 028  
MA 028 A/B

Grade Level: 6, 7, 8  
One or Two Semesters - 0.5-1.0 credit

This course offers intensive instruction to improve basic math skills in terms of concept development, application, and fluency based on individual student needs. **Enrollment Note: Students are placed into this class based on district criteria.**

### Reading 8

WW 351  
WW 351 A/B

Grade Level: 7  
One or Two Semesters - 0.5-1.0 credit

This course offers intensive instruction to improve basic reading skills in terms of comprehension, vocabulary, and fluency based on individual student needs. Students will also choose reading material based on interest and reading level. **Enrollment Note: Students are placed into this class based on district criteria.**

## Physical Education & Health

### Cheerleading/Health

PE 140 A/B

Grade Level: 7, 8  
Two Semesters - 1.0 credit

Admission to this course is by audition only. Grades and citizenship must be in compliance with the Kansas State High School Activities Association. The class emphasizes cheerleading skills and technique, conditioning, leadership, and squad unity. This course satisfies the physical education requirement. The health curriculum will also be delivered to students enrolled in this course.

### Dance Team/Health

PE 150 A/B

Grade Level: 7, 8  
Two Semesters - 1.0 credit

Admission to this course is by audition only. Grades and citizenship must be in compliance with the Kansas State High School Activities Association in order to audition. The class includes choreographing and learning routines, performing at various functions, and attending extra rehearsals. This course satisfies the physical education requirement. The health curriculum will also be delivered to students enrolled in this course.

### Physical Education/Health

PE 120 M

Grade Level: 8  
One Semester - 0.5 credit

The goal of Physical Education/Health is to develop physically and healthy individuals who have the knowledge, skills and confidence to enjoy a lifetime of healthful physical activity and engage in healthful behaviors.

# Grade 8 Courses - Electives

<b>AIM 8</b>	WW 441 A/B	<b>Career and Life Planning</b>	BU 140
<p>Grade Level: 8 Two Semesters - 1.0 credit</p> <p>This course is an elective class for students who are college-bound. Students learn college and career readiness skills to enhance academic success. Students will set goals, learn about time management and note-taking skills, create a four-year high school academic plan and work effectively in collaborative groups while learning about future college and career options. <b>Enrollment Note: Students are placed into this class based on district criteria. This course may not be offered at all middle schools.</b></p>	<p>Grade Level: 7, 8 One Semester - 0.5 credit</p> <p>This class develops knowledge and skills and explores attitudes needed for success in school and the workplace. Students explore topics relating to identifying their own interests, career possibilities, pre-employment skills, workplace skills, and educational goals. This class will have guest speakers. Students in this class are introduced to the career clusters and Olathe's High School Pathway and Academy options.</p>		
<b>Art I</b>	AR 110M	<b>Choir Ensemble</b>	PA 145 A/B
<p>Grade Level: 7, 8 One Semester - 0.5 credit</p> <p>This introductory art course is designed to provide seventh and eighth grade students an opportunity to experience drawing, painting, printmaking, ceramics, and sculpture. The elements of art, artists, and art history will provide a framework for this experience.</p>	<p>Grade Level: 7, 8 Two Semesters - 1.0 credit</p> <p>This advanced choral experience focuses on progressive ensemble skills, vocal techniques, and music literacy skills. Independent singing, vocal technique, and sight singing skills will be developed. <b>Enrollment Note: An audition may be required for this course. Throughout the year, attendance is required at performances and rehearsals which may be scheduled before/after school, in the evening, and on weekends. Home practice may be required as a graded assignment. A uniform purchase may be required. Financial assistance is available for those who qualify.</b></p>		
<b>Art II</b>	AR 120	<b>Choir - Tenor/Bass</b>	PA 120 A/B
<p>Grade Level: 7, 8 One Semester - 0.5 credit Prerequisite: Art I</p> <p>This course will be an emphasis on the elements of art and principles of design while creating a variety of 2-D and 3-D projects.</p>	<p>Grade Level: 7, 8 Two Semesters - 1.0 credit</p> <p>This class focuses on intermediate to advanced study of vocal technique, sight singing, and ensemble performance practices. <b>Enrollment Note: An audition may be required for this course. Throughout the year, attendance is required at performances and rehearsals which may be scheduled before/after school, in the evening, and on weekends. Home practice may be required, and financial assistance is available for those who qualify.</b></p>		
<b>Art III</b>	AR 130	<b>Choir - Treble</b>	PA 140 A/B
<p>Grade Level: 8 One Semester - 0.5 credit Prerequisite: Art II</p> <p>This advanced class offers an in-depth examination of the creative process. Eighth grade students who would like to take an additional art class may enroll in this class again with instructor permission.</p>	<p>Grade Level: 7, 8 Two Semesters - 1.0 credit</p> <p>This class focuses on advanced study of vocal technique, sight singing, and ensemble performance practices. <b>Guided Enrollment Note: Throughout the year, attendance is required at performance and rehearsals, which may be scheduled before/after school, in the evening, and on weekends. Home practice may be required as a graded assignment. A uniform purchase may be required but financial assistance is available for those who qualify.</b></p>		
<b>Automation &amp; Robotics</b>	IT 395	<b>Communications/Multi-Media</b>	LA 140
<p>Grade Level: 7, 8 One Semester - 0.5 credit</p> <p>Students learn about the history and impact of automation and robotics as they explore mechanical systems, energy transfer, machine automation, and computer control systems. Using the VEX Robotics® platform, students apply what they know to design and program traffic lights, robotic arms, and more.</p>	<p>Grade Level: 7, 8 One or Two Semesters - 0.5-1.0 credit</p> <p>The focus of this course is improving communication skills through oral and written language. Students will study journalism, write articles, and produce the school newspaper.</p>		
<b>Band 8</b>	PA 030 A/B		LA 140 A/B
<p>Grade Level: 8 Two Semesters - 1.0 credit Prerequisite: Band 7 or permission by instructor</p> <p>This course is open to all 8th grade band students and focuses on the advanced study of instrument and performance techniques. <b>Enrollment Note: Throughout the year, attendance is required at performances and rehearsals, which may be scheduled before/after school, in the evening and on weekends. Regular at-home practice will be required as a graded assignment. Students must provide their own instrument. A uniform purchase may be required. Financial assistance is available for those who qualify.</b></p>			

# Grade 8 Courses - Electives

17

## Computer I

CP 400M

Grade Level: 7, 8  
One Semester - 0.5 credit

This is a project-based course which helps prepare students to use technology and provides further experiences with word processing, spreadsheets, presentations and graphical applications. Course content is updated frequently to reflect new technologies.

## Computer II

CP 410M

Grade Level: 7, 8  
One Semester - 0.5 credit  
Prerequisite: Computer I

This course is designed to help students build on what they learned in Computer I. This class expands students' knowledge of computer software. Course content is updated frequently to reflect new technologies.

## Design & Modeling

IT 391

Grade Level: 7, 8  
One Semester - 0.5 credit

Students discover the design process and develop an understanding of the influence of creativity and innovation in their lives. They are then challenged and empowered to use and apply what they've learned throughout the class to design a product with a real-world impact.

## Focus on French

FL 100

Grade Level: 7, 8  
One Semester - 0.5 credit

Students explore French countries, focusing on their cultural differences, holidays, and customs. Students interact with vocabulary and phrases related to daily life and personal interests.

## Focus on Spanish

FL 110

Grade Level: 7, 8  
One Semester - 0.5 credit

Students explore Spanish-speaking countries, focusing on their cultural differences, holidays, and customs. Students interact with vocabulary and phrases related to daily life and personal interests.

## French I

FL 410M A/B

Grade Level: 8  
Two Semesters - 1.0 credit

This class is designed for students who have had little or no experience learning French. Students learn about the French culture and learn to communicate in the context of ordinary, daily situations. In order to promote language proficiency, much of this class is taught in French. Students who complete this course continue to French II. **Enrollment Note: Students must take French 1 in 8th grade if they plan to enroll in AP French their senior year in high school.**

## Innovations in Computer Coding and App Creating

CP 120

Grade Level: 7, 8  
One Semester - 0.5 credit

This course will allow students to discover computer science concepts and skills by creating projects and developing mobile apps. Students will learn about programming by blending hardware design and software development. Students will customize their experience by choosing a problem that interests them.

## Introduction to Apparel Production

HE 160

Grade Level: 7, 8  
One Semester - 0.5 credit

This introductory level course gives students an opportunity to learn the basics of sewing and proper machine use. Students will learn safe use of a sewing machine and specific equipment, textile selection, and basic construction techniques. Through hands-on projects and presentations students will learn how to create designs for home and personal use. **Enrollment Note: Students will furnish their own supplies for individual projects.**

## Introduction to Culinary I

HE 130

Grade Level: 7, 8  
One Semester - 0.5 credit

This course will introduce students to skills and knowledge in the areas of kitchen and meal management. Safety, sanitation, lab management, and nutrition are emphasized in each unit. Cooking lab experiences will include baking, preparing protein, fresh produce, and international foods.

## Introduction to Culinary II

HE 140

Grade Level: 7, 8  
One Semester - 0.5 credit

Students will learn proper cooking and preparation techniques, scientific principles relating to recipes, and the role each plays in a healthy diet. Basics of kitchen management and safety are integral to each preparation lab. Healthy food choices are emphasized in each unit.

## Introduction to Fashion, Apparel & Interior Design (FAID)

HE 170

Grade Level: 7, 8  
One Semester - 0.5 credit

This introductory level course gives students an opportunity to learn the basics of the design industry with special focus on fashion, interiors and apparel. Through hands-on projects and presentations students will learn about the basics of color, fashion history, design principles, textile selection, fashion basics, entrepreneurship and careers in design fields. **Enrollment Note: Students will furnish their own supplies for individual projects.**

# Grade 8 Courses - Electives

## Introduction to Materials & Processes

IT 210

Grade Level: 8  
One Semester - 0.5 credit

This course is designed for students with an interest in woods, metals, plastics, and related technologies. After an introduction involving drafting, machine and shop safety, students fabricate projects using basic drawings and equipment.

## Jazz Band

PA 050

Grade Level: 7, 8  
One Semester - 0.5 credit  
Prerequisite: Band 6 or permission by instructor

Concurrent enrollment in Band 7/8 or Orchestra 7/8 is required. This course provides students with strong fundamental skills covered in the concert band classes, with an introduction to various jazz styles, solo improvisation, and performance opportunities. **Enrollment Note: Throughout the year, attendance is required at performances and rehearsals, which may be scheduled before/after school, in the evening and on weekends. Regular at-home practice will be required as a graded assignment. Students must provide their own instrument. A uniform purchase may be required. Financial assistance is available for those who qualify.**

## Leadership Concepts

YA 300

Grade Level: 7, 8  
One Semester - 0.5 credit

This class introduces students to the various types of leaders and models of leadership. Students will participate in team building activities and develop their knowledge of leadership skills and concepts. Students will research and propose solutions to building-level issues.

## Leadership Explorations

YA 306

Grade Level: 8  
One Semester - 0.5 credit

Students will assess and define their personal leadership style. Students participate in team building activities and further develop their own leadership skills. Students research and present a social advocacy project.

## Orchestra 8

PA 080 A/B

Grade Level: 8  
Two Semesters - 1.0 credit  
Prerequisite: Orchestra 7 or permission by instructor

This course is open to all students who play violin, viola, cello and string bass. Students should be starting their fourth year of instruction. **Enrollment Note: Attendance is required at all rehearsals and performances. Regular at-home practice will be required as a graded assignment. Students on violin, viola, and cello must furnish their own instrument. A uniform purchase may be required. Financial assistance is available for those who qualify.**

## Spanish I

FL 610M A/B

Grade Level: 8  
Two Semesters - 1.0 credit

This class is designed for students who have had little or no experience learning Spanish. Students learn about the Hispanic culture and to communicate in the context of ordinary, daily situations. In order to promote language proficiency, much of this class is taught in Spanish. Students who complete this course continue to Spanish II. **Enrollment Note: Students must take Spanish 1 in 8th grade if they plan to enroll in AP Spanish their senior year in high school.**

## Spanish for Heritage Speakers

FL 120

Grade Level: 7, 8  
One Semester - 0.5 credit

This course is designed specifically for students who have already gained speaking and listening proficiency in Spanish in a home or other community setting or in a previous school setting outside of the United States. Students will strengthen their reading and writing skills in Spanish through study and discussion of language structure, cultural and current events, and academic language. This class is conducted entirely in Spanish. Students may be asked to complete a language assessment to determine proper placement in this course. **Enrollment Note: Students may take this course in both 7th and 8th grade if desired. This course may not be offered at all middle schools.**

## Stagecraft

PA 180

Grade Level: 7, 8  
One Semester - 0.5 credit

Students will take a look behind the scenes in this technical theatre course. Students get hands-on experience with design, scenic painting, costumes, makeup, prop construction, and other aspects of production work.

## Theatre I

PA 160

Grade Level: 7, 8  
One Semester - 0.5 credit

Explore the multi-faceted world of theatre in this introductory class. Students will cultivate self-expression and confidence through a collaborative look at movement, acting techniques, and performance. Students will also improve their creative thinking and analytical skills through scriptwriting and interpretation.

## Theatre II

PA 190

Grade Level: 7, 8  
One Semester - 0.5 credit  
Prerequisite: Theatre I

This class is an in-depth course that builds upon the skills and techniques learned in Theatre I. This class will challenge students' leadership and creativity as they collaborate in theatre projects such as scene work, playwriting, play production, script analysis, and character development.

## Yearbook

LA 240  
LA 240 A/B

Grade Level: 8  
One or Two Semesters - 0.5-1.0 credit

This course exposes students to increased communications, media, and introductory journalism skills, including producing the school yearbook.



**Front cover artwork by: Payton Butler, Sophomore  
Graphic Design I, Olathe East**

# Grades 6 - 8



CALIFORNIA TRAIL



CHISHOLM TRAIL



FRONTIER TRAIL



INDIAN TRAIL



MISSION TRAIL



OREGON TRAIL



PIONEER TRAIL



PRAIRIE TRAIL



SANTA FE TRAIL



SUMMIT TRAIL



## Notification Statement of Non-discrimination

The Olathe Public Schools prohibit discrimination on the basis of race, color, ethnicity, national origin, sex, disability, age, religion, sexual orientation, or gender identity in the admission or access to, or treatment or employment in, its programs and employment, and provides equal access to the Boy Scouts and other designated youth groups to its facilities as required by: Title VI and Title VII of the Civil Rights Act of 1964; Title IX of the Education Amendments of 1972, the Age Discrimination Act of 1975, the Americans with Disabilities Act, the Individuals with Disabilities Education Act, Section 504 of the Rehabilitation Act of 1973, the Equal Access Act of 1984, and other relevant state and federal laws as amended. Inquiries regarding compliance, reports of specific complaints, or alleged discrimination may be directed to Olathe Public School's Compliance Coordinator, John Hutchison, Deputy Superintendent, or to Chris Pittman, Staff Counsel, 14160 S. Black Bob Road, Olathe, KS 66063-2000, phone 913-780-7000. Interested persons, including those with impaired vision or hearing, can also obtain information as to the existence and location of services, activities and facilities that are accessible to and usable by disabled persons by contacting Dr. Jim McMullen, Assistant Superintendent of Operations, 14160 S. Black Bob Road, Olathe, KS 66063-2000, phone 913-780-7000. (08/21)