

# OLSON MASK PATTERN

Created by: Clayton Skousen & Rose Hedges

VERSION 2 || 04/11/20

## Materials Needed

Edited for

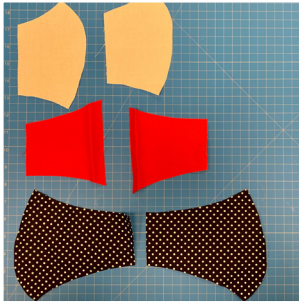


YANKTON MEDICAL CLINIC®, P.C.

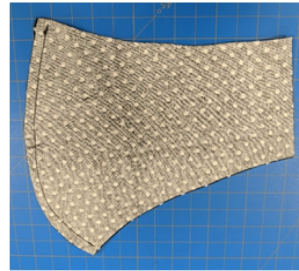


- Cotton Weave Fabric (~½ yard is enough to make 2-3 masks)
- All-Purpose Thread
- 1/4" braided elastic- 10 inches total
- Scissors

- **When printing the mask pattern, be sure auto-fit is not selected. Print at actual size.**
- **Print at 100% for size large.**
- **Print at 90% for size medium.**



1. Using the patterns, cut one of each shape. You will need six (6) total pieces.



2. Sew face 1 and face 2 together along side 3.



3. Sew mouth 1 and mouth 2 together along side 3.



4. On mouth 1 and mouth 2 sew fold side 5 over  $\frac{1}{4}$  inch and sew down.



5. On cheek 1 and cheek 2 fold side 6 over  $\frac{1}{4}$  inch and sew down.

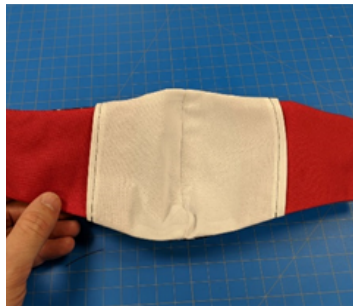


6. Match cheek 1 and mouth 1 at the dotted line (7). Sew a 1-inch tack at side 1 and side 2 where the two pieces overlap.

7. Repeat Step 6 for cheek 2 and mouth 2.



8. With the fronts of the fabric facing each other, sew along the entire perimeter of the mask.



9. Use one of the slits between the mouth and the cheek to turn the mask right-side out.



10. Add 5 inches of 1/4 inch elastic to each side. Sew the ends of the elastic together by overlapping slightly and using a zig zag stitch. Then fold the fabric on the end of the mask over the elastic and sew down.



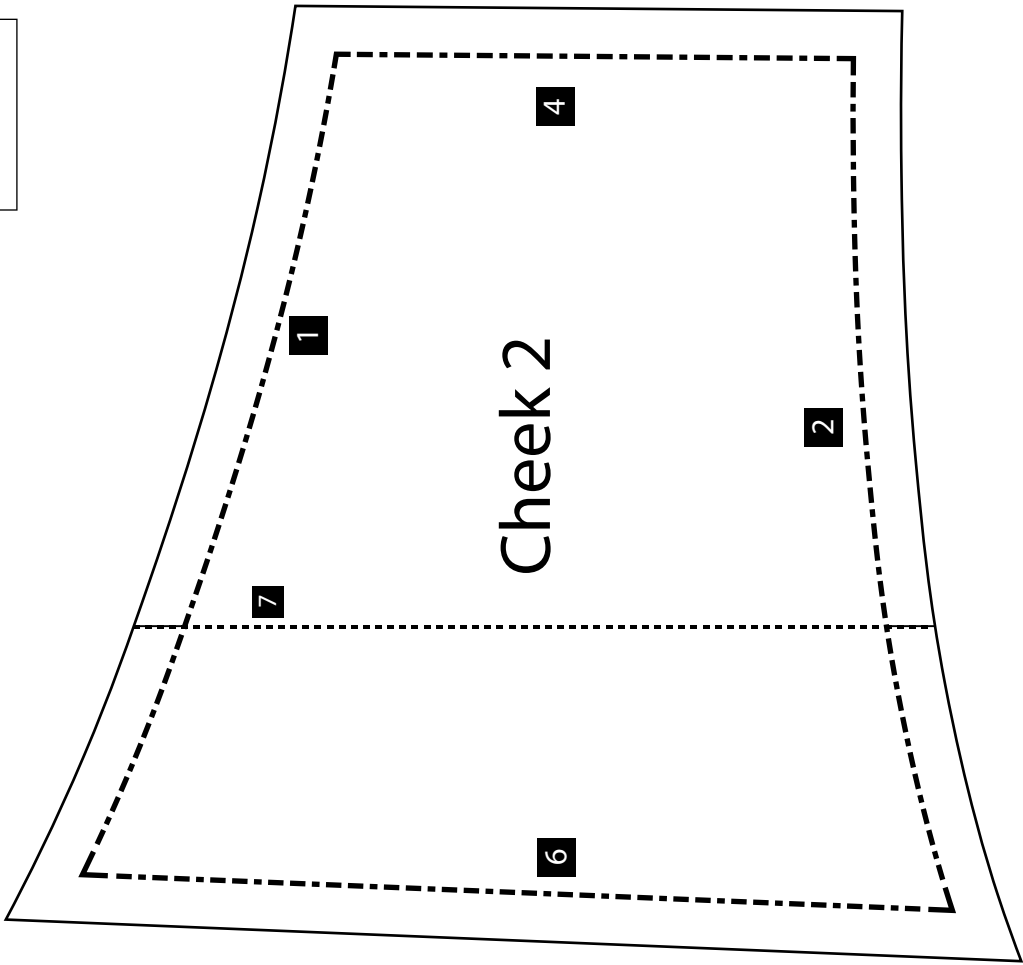
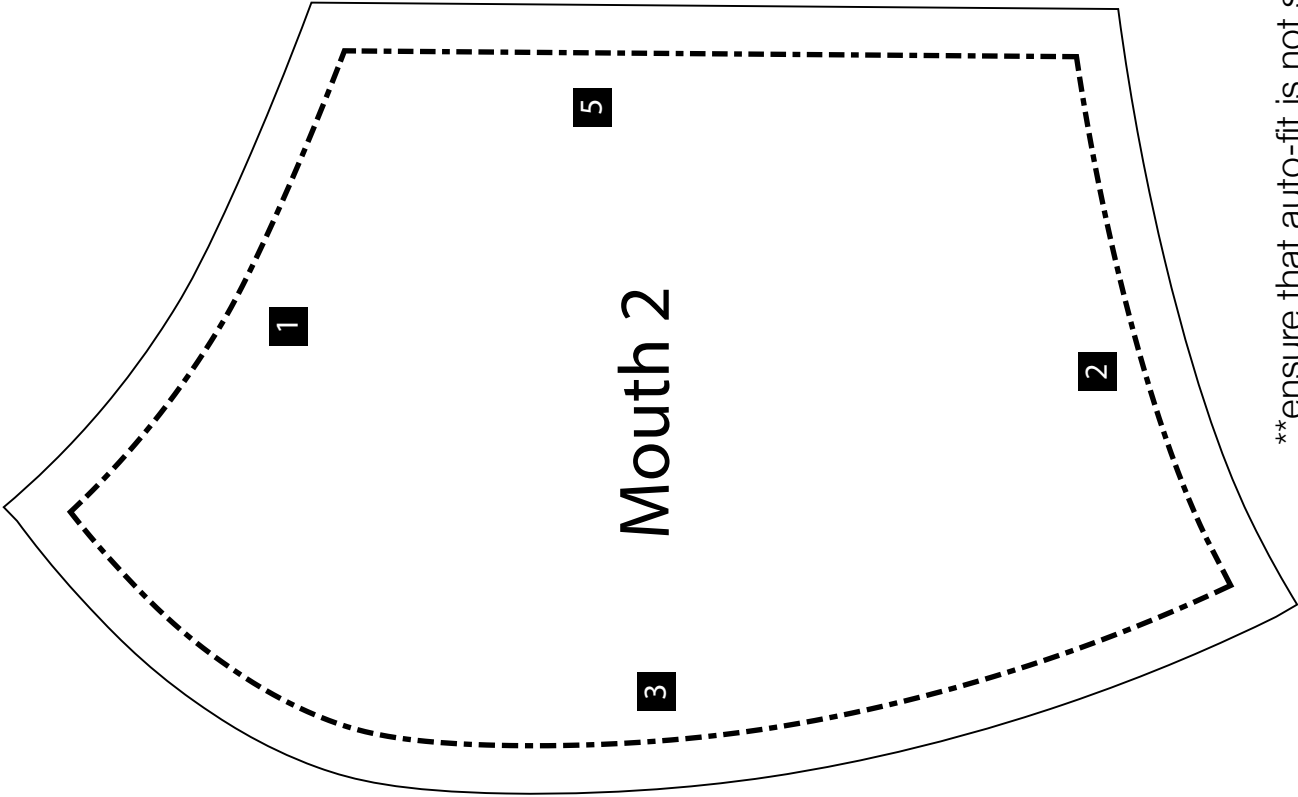
11. Using a permanent marker, mark the inside of the mask with the size.

12. Completed masks can be dropped off at any of our locations during business hours. Collection boxes are located in the entryway.

Pattern | MOUTH & CHEEK

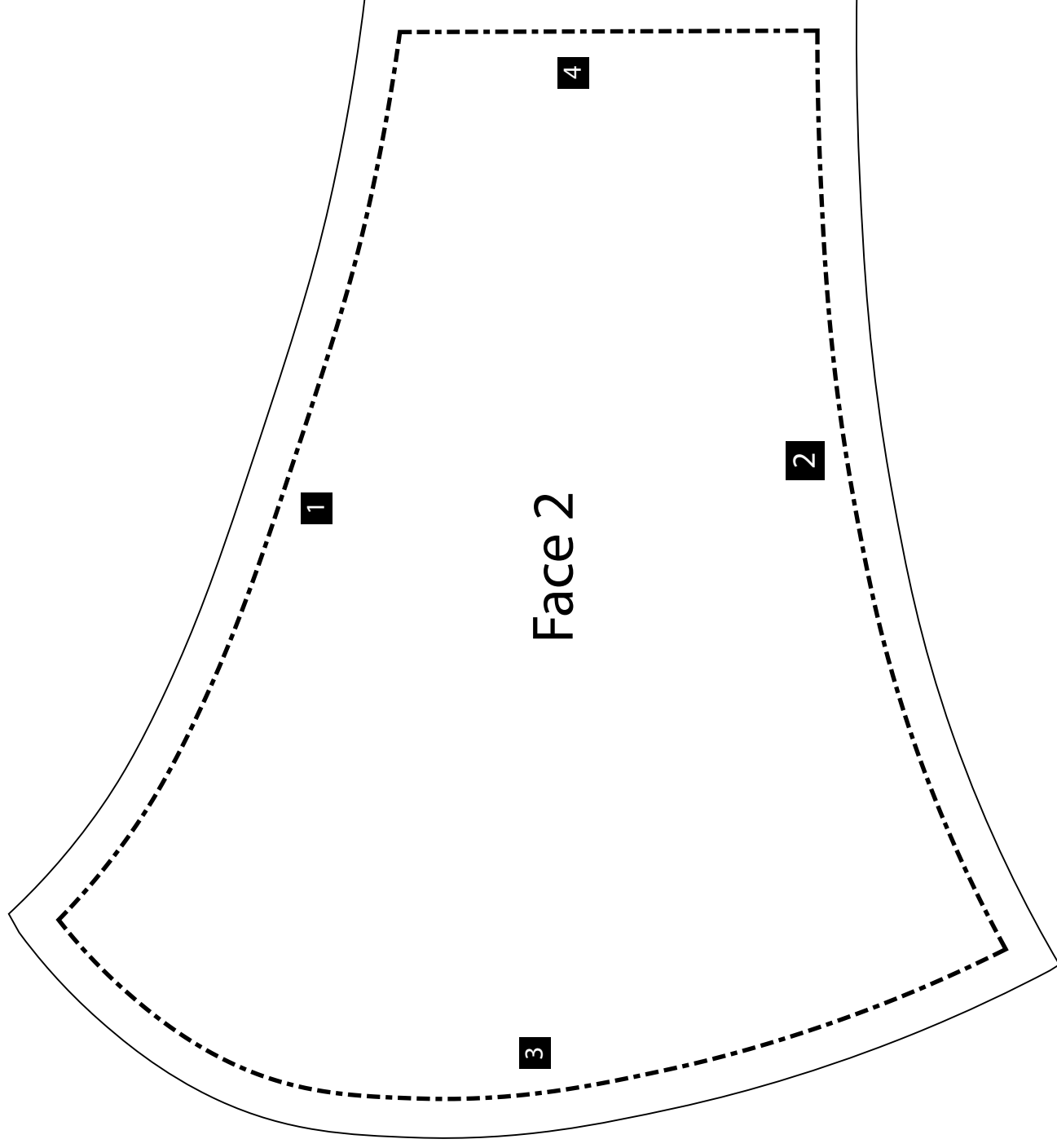
Size Large- Print at 100%  
Size Medium - Print at 90%

1" x 1"  
Test Square



\*\*ensure that auto-fit is not selected when printing to ensure pattern measurements are not altered

Size Large- Print at 100%  
Size Medium - Print at 90%



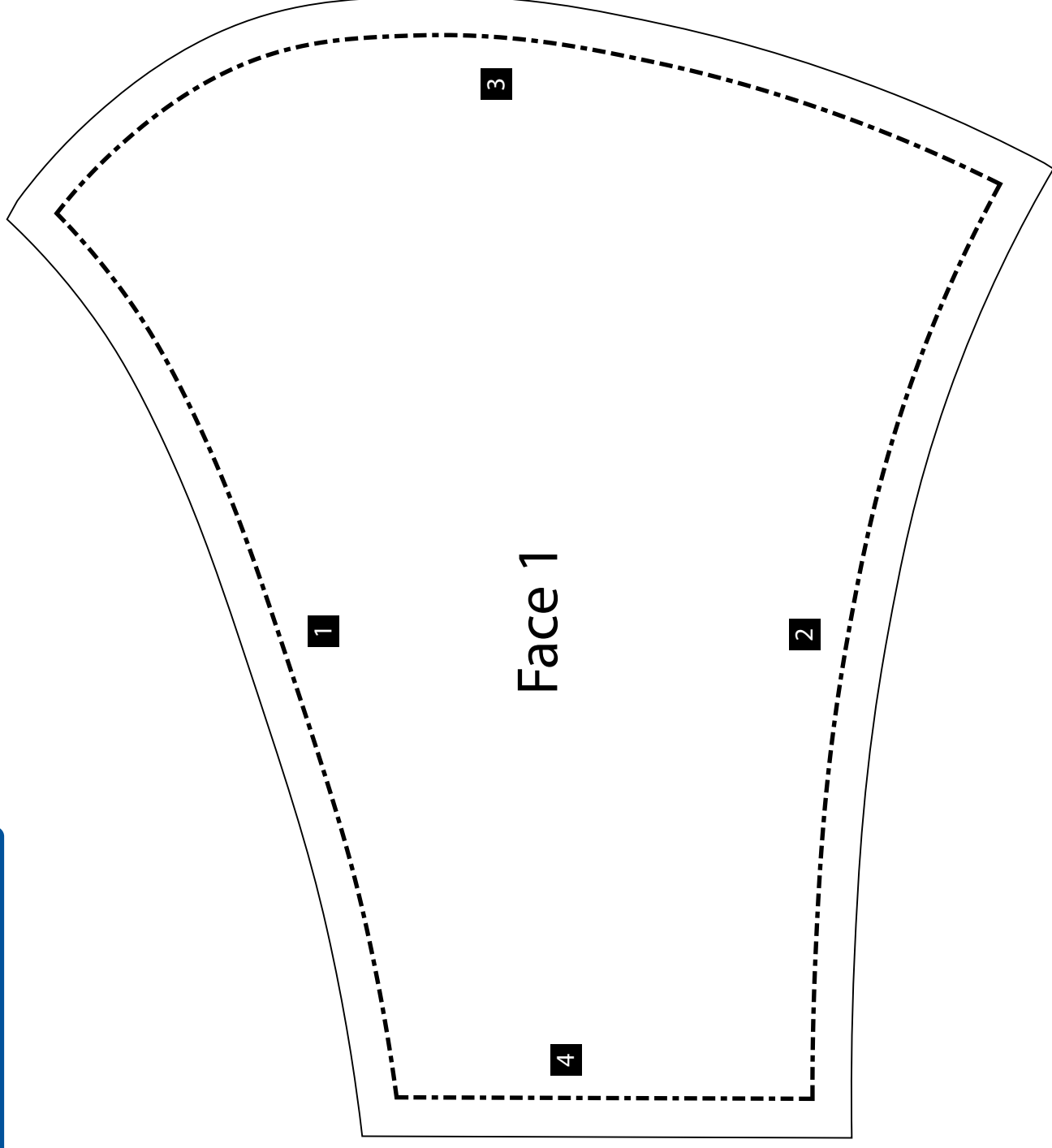
1" x 1"

Test Square

\*\*ensure that auto-fit is not selected when printing to ensure pattern measurements are not altered

1" x 1"

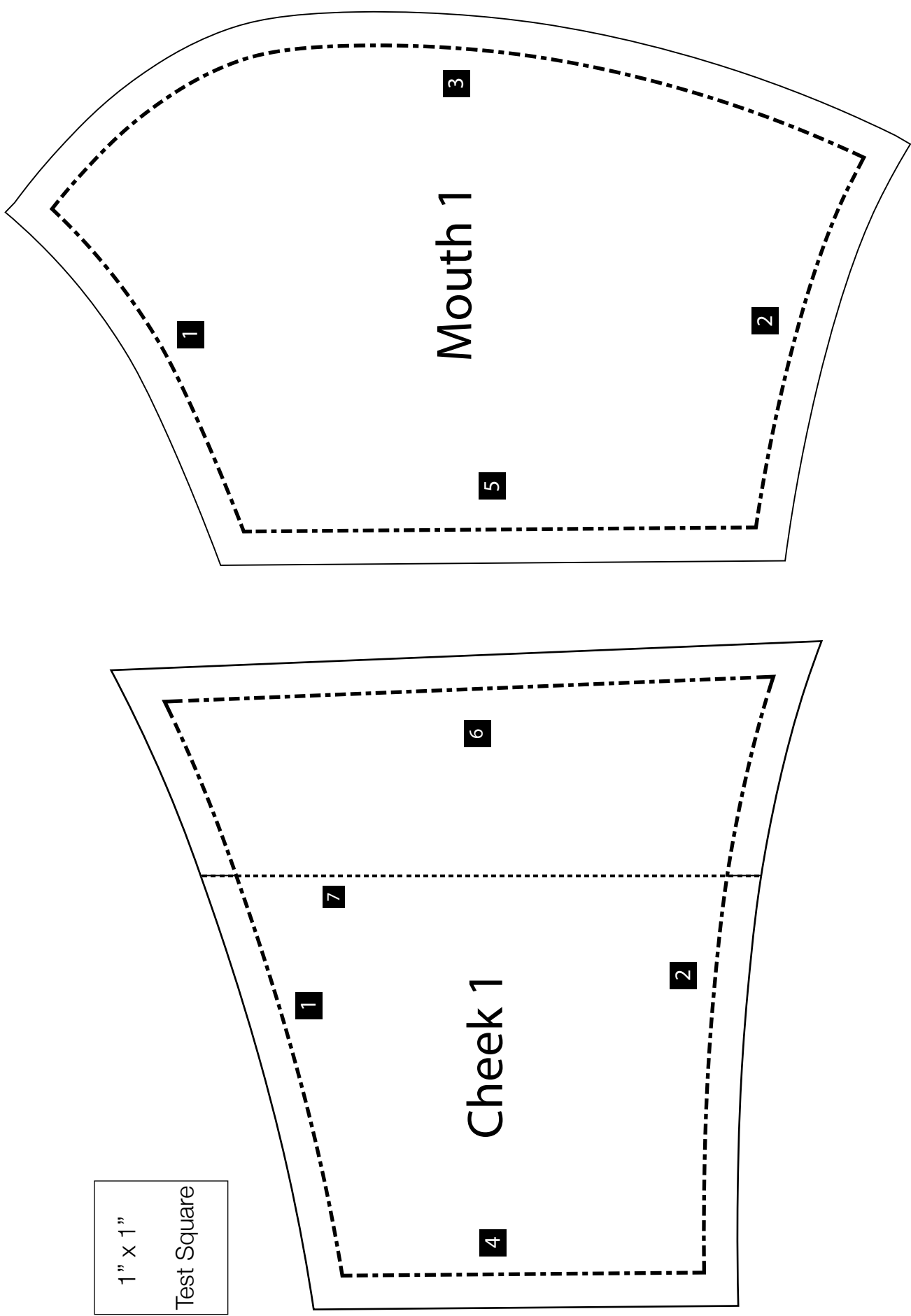
Test Square



\*\*ensure that auto-fit is not selected when printing to ensure pattern measurements are not altered

Pattern | MOUTH & CHEEK

Size Large- Print at 100%  
Size Medium - Print at 90%



\*\*ensure that auto-fit is not selected when printing to ensure pattern measurements are not altered