



# ON THE WATERFRONT

## A GUIDE TO WATERSIDE FILM LOCATIONS



British Waterways  
Filming Enquiries  
Willow Grange  
Church Road  
Watford WD17 4QA  
Tel: 01923 201120  
Fax: 01923 201300  
Website: [www.britishwaterways.co.uk/filming](http://www.britishwaterways.co.uk/filming)  
E-mail: [filming@britishwaterways.co.uk](mailto:filming@britishwaterways.co.uk)

CONTENTS

“This brochure is an excellent example of how location owners can unlock the potential of their sites and develop relationships with the filming industry. Britain’s waterways offer a fantastic national and international resource of locations, and few single organisations can offer as much variety as British Waterways. The British Film Commission is pleased to be working alongside British Waterways to open up its waterside sites to a much wider audience.”



Steve Norris  
British Film Commissioner



**FAR FROM THE MADDING CROWD**

Rural Landscapes | Rugged Countryside | Mountain Backdrops

2



**LOCK, STOCK & TWO SMOKING BARRELS**

Urban Decay | Dereliction | Hidden Corners

4



**WISH YOU WERE HERE...?**

Beauty Spots | Tourist Attractions | Days Out

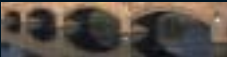
6



**THE FULL MONTY**

Industrial Scenes | Factories | Smoke

8



**DAMBUSTERS**

Aqueducts | Reservoirs | Locks & Bridges

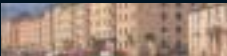
10



**HOWARD’S WAY**

Docks | Marinas | Boats

12



**NEIGHBOURS**

Homes | Town Centres | Suburbs

14



**ONE FOOT IN THE PAST**

Curious Structures | Buildings | Heritage

16



**AUF WIEDERSEHEN PET!**

Work in Progress | Holes | Demolition

18



**THE WORLD IS NOT ENOUGH...**

Further information

20

Front Cover: Bowling Basin, near Dumbarton.  
Forth & Clyde Canal

# LIGHTS...CAMERA...ACTION!

## Introduction

Water offers the perfect setting for any number of atmospheric film locations. From gritty urban scenes to rural idylls, British Waterways' 2,000 miles of canals, lochs, rivers, docks and lakes will have something to suit the needs of every production company.

Our vast network across England, Wales and Scotland has already played host to an abundance of famous film and television productions such as *The World is Not Enough*, *The Bill*, *Big Brother*, *Martin Chuzzlewit*, *Hollyoaks*, *Clarissa & the Countryman* and *Taggart*. Our experience and local knowledge, combined with an enormous range of locations, means that we are able to offer a unique, professional and efficient service.

We hope that this brochure will give you a feel for the rich diversity of waterside locations that can be found across Britain. If you wish to find out more, have a look on our website, or contact one of the film liaison officers listed at the back of this brochure to discuss your particular requirements.





# FAR FROM THE MADDING CROWD

Rural Landscapes | Rugged Countryside | Mountain Backdrops



1



2

- 1. Dochgarroch, near Inverness – Caledonian Canal
- 2. Near Stoke-on-Trent – Caldon Canal
- 3. Overlooking River Dee Valley, near Llangollen – Llangollen Canal
- 4. Napton – Oxford & Grand Union Canal
- 5. Brynderwen Lock, near Newton, Powys – Montgomery Canal
- 6. Dyfnant Bridge, near Crickhowell, Powys – Monmouthshire & Brecon Canal
- 7. Killington Lake, near Sedbergh – Lancaster Canal
- 8. View of Ben Nevis, near Fort William – Caledonian Canal



3



4



5



6



7



8



# LOCK, STOCK & TWO SMOKING BARRELS

Urban Decay | Dereliction | Hidden Corners



- 1. Westbourne Green, West London – Grand Union Canal, Paddington Branch
- 2. Weston Point Docks, near Runcorn – River Weaver Navigation
- 3. Middleport Pottery, near Burslem – Trent & Mersey Canal
- 4. Stratford, East London – Bow Back Rivers
- 5. Albert Street Cutting, near Bridgwater – Bridgwater & Taunton Canal
- 6. Stratford, East London – Bow Back Rivers





# WISH YOU WERE HERE..?

Beauty Spots | Tourist Attractions | Days Out



1



2



3



4



5



6



7

1. Camden Lock, London – Regent's Canal
2. Standedge Tunnel, Marsden near Rochdale – Huddersfield Narrow Canal
3. Little Venice, London – Regent's Canal
4. Falkirk Wheel, near Edinburgh – Forth & Clyde and Union Canals
5. Foxton locks, near Market Harborough – Grand Union Canal
6. Newark waterfront, near Nottingham – River Trent Navigation
7. Bancroft Basin, Stratford-upon-Avon – Stratford-upon-Avon Canal & River Avon



# THE FULL MONTY

Industrial Scenes | Factories | Smoke



- 1. Marton with West Burton power station backdrop, near Doncaster – River Trent
- 2. Marton with West Burton power station backdrop, near Doncaster – River Trent
- 3. Gloucester Docks, Gloucester – Gloucester & Sharpness Canal
- 4. Goole Docks – Aire & Calder Navigation
- 5. St Pancras Lock, London – Regent's Canal
- 6. Goole Docks – Aire & Calder Navigation





# DAMBUSTERS

Aqueducts | Reservoirs | Locks & Bridges



1. Pontcysyllte Aqueduct, near Llangollen – Llangollen Canal

2. Horse Bridge, Cheshire – River Weaver

3. Iron Trunk Aqueduct, near Milton Keynes – Grand Union Canal

4. Pontcysyllte Aqueduct, near Llangollen – Llangollen Canal

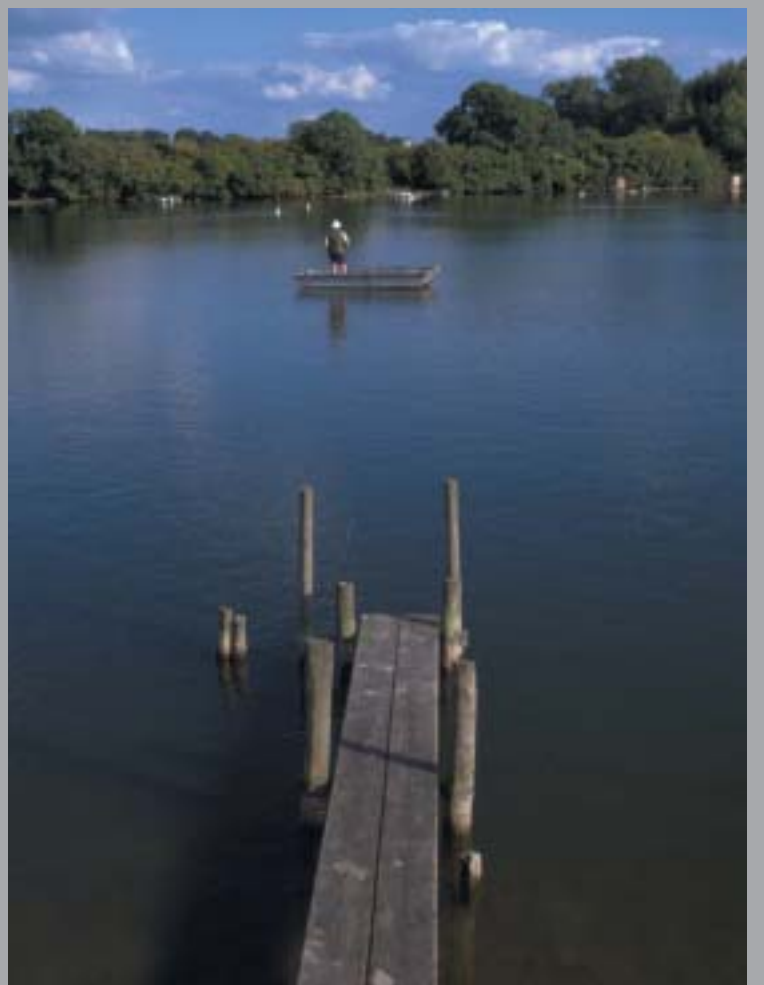
5. Wooton Wawen, near Henley-in-Arden – Stratford Canal

6. Tring Reservoirs, Hertfordshire – Grand Union Canal

7. Stanley Ferry, near Wakefield – Aire & Calder Navigation

8. Bingley Five Rise Locks, near Bradford – Leeds & Liverpool Canal

9. Delph Locks, near Birmingham – Stourbridge Canal





# HOWARD'S WAY

Docks | Marinas | Boats



1. Poplar Dock Marina, London – Docklands
2. Iver, near Slough – Grand Union Canal, Slough Arm
3. Hull Marina – River Hull
4. Harbourmaster's Pavillion, London – Limehouse Cut
5. Bowling Basin, near Dumbarton – Forth & Clyde Canal
6. Glasson Basin, near Lancaster – Lancaster Canal
7. Millwall Outer Dock, London – Docklands
8. Bowling Basin, near Dumbarton – Forth & Clyde Canal





# NEIGHBOURS

Homes | Town Centres | Suburbs



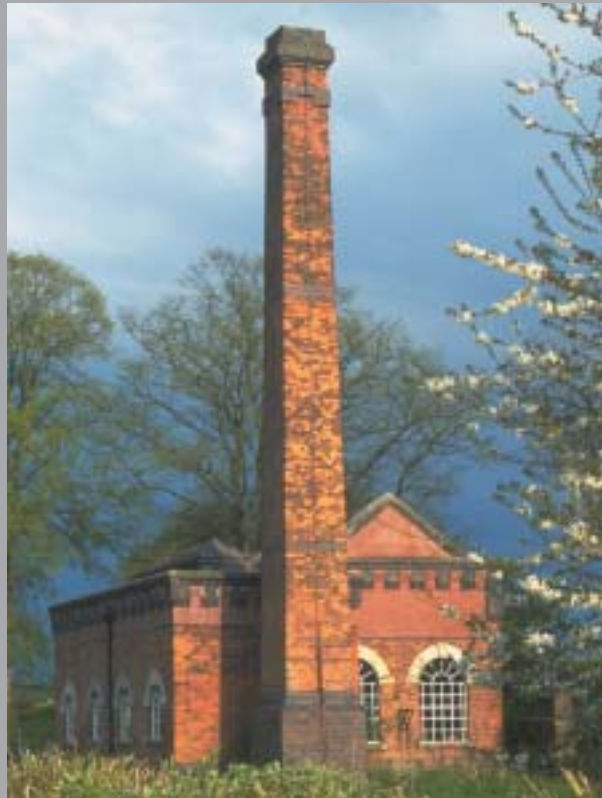
- 1. Speirs Wharf, Glasgow – Forth & Clyde Canal
- 2. Peel's Wharf, Fazeley – Birmingham & Fazeley Canal
- 3. Brindley Place, Birmingham City Centre – Birmingham Canal Navigations
- 4. The Wharf House, Fazeley Junction – Coventry Canal
- 5. International Convention Centre, Birmingham City Centre – Birmingham Canal Navigations
- 6. Merry Hill, near Dudley – Birmingham & Black Country Canal





# ONE FOOT IN THE PAST

Curious Structures | Buildings | Heritage



1. Anderton Boat Lift, Northwich – River Weaver and Trent & Mersey Canal
2. Braunston Pumphouse, Braunston – Grand Union Canal
3. Ellesmere Port, Liverpool – River Mersey
4. Anderton Boat Lift, Northwich – River Weaver and Trent & Mersey Canal
5. Snake Bridge, Congleton – Macclesfield Canal

6. Paddle gear, near Taunton – Bridgwater & Taunton Canal
7. Bratch Toll office, near Wolverhampton – Staffordshire & Worcester Canal
8. Drayton Park Manor, near Fazeley – Birmingham & Fazeley Canal
9. Old Tower, Severn Estuary – Gloucester & Sharpness Canal
10. Barrel-roofed cottage, Lowsonford – Stratford-upon-Avon Canal





# AUF WIEDERSEHEN PET!

Work in Progress | Holes | Demolition



1



2

- 1. Ashby Canal northern section, Leicestershire
- 2. Ashby Canal northern section, Leicestershire
- 3. Apsley Marina, near Hempstead – Grand Union Canal
- 4. Near Manchester - Rochdale Canal
- 5. Near Manchester – Rochdale Canal
- 6. Standedge Tunnel, near Rochdale – Huddersfield Narrow Canal



3



4



5



6



# THE WORLD IS NOT ENOUGH...

We hope that this brochure has given you a glimpse into what we can offer. To find out more about any of the locations featured here, or if you need help in finding a particular type of location, please contact us on the number below. If you have a specific location in mind, you may like to get in touch with our local contact for that area, who will be able to assist you in more detail. You can find local contact details on the enclosed information sheet.

British Waterways  
Filming Enquiries  
Willow Grange  
Church Road  
WATFORD WD17 4QA  
Tel: 01923 201120  
Fax: 01923 201300  
Website: [www.britishwaterways.co.uk/filming](http://www.britishwaterways.co.uk/filming)  
E-mail: [filming@britishwaterways.co.uk](mailto:filming@britishwaterways.co.uk)

**Enigma Code Breaker Productions**  
*Thank you so much for all your valuable assistance with our feature film. It has all been a tremendous success and the initial rushes look amazing. Without your help of course this would not have been achievable, and we are very grateful for all the time and help you gave us.*

**Emma Brody 20th Century Fox Productions**  
*We would like to thank you very much for allowing us to film at Little Venice. It was most kind of you to allow us to film in a potentially sensitive area, and are fully aware that it would not have been possible to make this film without your help and that of your dedicated staff. Our producers have seen the rushes and they are extremely pleased with the footage shot there.*

**Randall & Hopkirk (Deceased) Ghost Productions Ltd**  
*A big thank you for all your help and input into the filming of "Randall & Hopkirk (Deceased)". It was a pleasure to work with you, and we hope to work with you again on future projects.*

**The Jury Granada Television Ltd**  
*Now that filming is almost complete, I can finally find time to write and thank you properly for all your kind help in allowing us to film on the towpath of the Lee Navigation for "The Jury". The location worked very well for us, and everybody is delighted with the film footage we have shot on this production.*

**Young Adam Young Adam Productions Limited**  
*I had to write a short note to say how impressed I have been with British Waterways during the filming of Young Adam. Even with our schedule changing almost daily you have still managed to stay ahead of the game. I hope I can find an excuse to come back and film on the canal soon as it has been a very pleasurable experience.*