

# HILTI

Hilti HIT-HY 200  
System

**One giant leap.**

**Hilti. Outperform. Outlast.**



## **A small step for contractors. And a giant leap forward for your next job.**

Now you can install anchor rod and post-installed rebar connections with more confidence. Inadequately cleaning holes during installation can reduce the performance of conventional chemical anchor systems significantly. Hilti Safe Set™ Technology eliminates this factor almost entirely – in both cracked or uncracked concrete and with anchor rods or post-installed rebar.

**Hilti proudly presents the HIT-HY 200 System.**



**2009 IBC®  
Compliant Anchor**

\* Approval pending.

## **Introducing Safe Set™ Technology**

Safe Set™ Technology is the term used to indicate that an adhesive anchor is approved for installation using Hilti's innovative non-cleaning or self-cleaning systems.

Hilti's non-cleaning installation solution includes the use of HIT-Z Anchor Rods. Using this method, dust can be left in the anchor hole without impacting holding values.

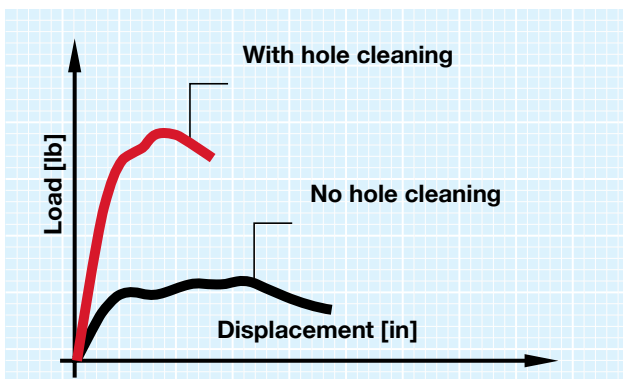
Self-cleaning installation is as simple as it sounds. The installer uses a Hilti Hollow Drill Bit to drill the anchor hole with a VC 20/40 Vacuum Cleaner attachment. Using this method, the dust is sucked out of the hole during the drilling process, thereby eliminating the need for further cleaning.

Both the self-cleaning and non-cleaning installation methods will be included in the ICC-ES approval for HIT-HY 200.

## No cleaning required. Set anchors and rebar reliably.

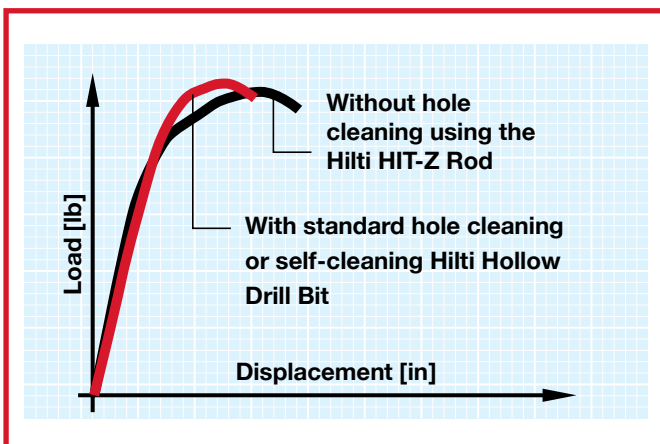
It's no secret that adhesive anchors encounter varying jobsite conditions. Hilti injection technology (HIT) is featured in our lineup of quality products to combat this issue. With Hilti Safe Set™ Technology, which includes either Hollow Drill Bits with the VC 20/40 Vacuum Cleaner or HIT-Z Anchor Rods, we are taking another giant leap forward by removing a step of the installation process entirely.

### Potential effects of no hole cleaning



When a threaded rod or rebar is set with conventional injection adhesive, the load it's capable of taking may be very low if the hole is inadequately cleaned after drilling. The Hilti Safe Set™ system eliminates a cleaning step while still providing excellent load values.

### Hilti HIT-HY 200 Injectible Adhesive with Safe Set™ Technology



The new Safe Set™ System featuring HIT-HY 200 allows a fastening point to take high loads, as though the hole were cleaned using traditional installation methods.

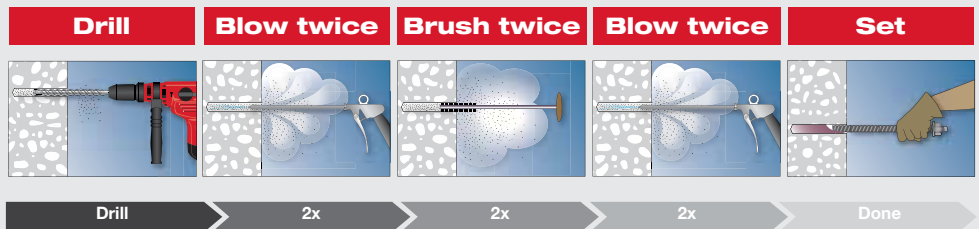


**There are three ways to install HIT-HY 200.** Once in a blue moon, something comes along with the power to change the way you work.

## The traditional method.

### Blow and brush

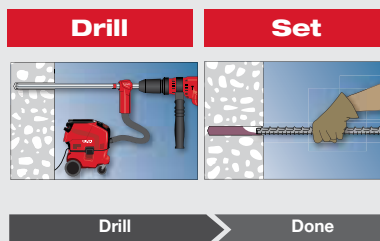
One option is to continue using your current hole cleaning method while substituting HIT-HY 200 in place of your current adhesive product for superior performance.



## Holes that clean themselves.

### Hollow Drill Bits

Hilti TE-CD and TE-YD Hollow Drill Bits, in conjunction with HIT-HY 200, make subsequent hole cleaning completely unnecessary. Dust is removed by the Hilti VC 20/40 Vacuum System while drilling is in progress for faster drilling and a virtually dustless working environment.

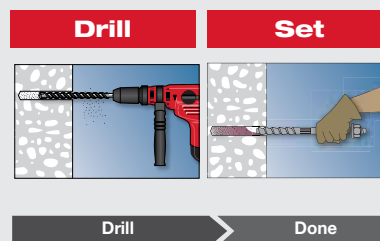


Hilti Safe Set™ Technology  
Up to 60% faster!

## No cleaning required.

### HIT-Z Anchor Rods

The new Hilti HIT-Z Rod works as a torque-controlled bonded anchor. Because of their unique shape, HIT-Z Anchor Rods, used in hammer-drilled holes in dry or water-saturated concrete above 41°F (5°C), are not affected by uncleaned holes. The benefits are clear: fewer steps and more productivity in anchoring applications.



Hilti Safe Set™ Technology  
Up to 60% faster!

# 1

## Identify your application



Rebar



Anchoring

### Applications

- Post-installed rebar connections for concrete slab, column or wall extensions
- Heavy-duty anchoring in cracked or uncracked concrete, e.g. for steel beams, columns, manufacturing equipment or ledger angles
- Facade installation, steel and metal construction, installation of railings and safety barriers

# 2

## Choose your working time

### Technical Data HIT-HY 200 Adhesive Anchor

#### Gel / Full Cure Time Table (Approximate)

HIT-HY 200-A "Accelerated" Working Time				HIT-HY 200-R "Regular" Working Time			
Base Material Temp		t <sub>gel</sub>	t <sub>cure</sub>	Base Material Temp		t <sub>gel</sub>	t <sub>cure</sub>
°F	°C			°F	°C		
14	-10	90 min	7 hrs	14	-10	180 min	20 hrs
23	-5	90 min	7 hrs	23	-5	180 min	20 hrs
32	0	50 min	4 hrs	32	0	90 min	7 hrs
50	10	15 min	1 hr	50	10	40 min	2 hrs
68	20	7 min	30 min	68	20	15 min	1 hr
86	30	4 min	30 min	86	30	9 min	1 hr

### Regular and accelerated

- Hilti HIT-HY 200 Adhesive is available in two versions with the same load performance: HIT-HY 200-R for regular working times and HIT-HY 200-A for accelerated working times
- Colder climates and shallow embedment depths may be more suited to HIT-HY 200-A with accelerated working time
- Warmer climates and deeper embedment depths may be more suited to HIT-HY 200-R with regular working time
- Choose either working time and maintain the benefits of a fast curing adhesive

# 3

## Choose your installation method



Safe Set™ Technology



Traditional method

No hole cleaning with the HIT-Z Anchor Rod or self-cleaning with the Hilti Hollow Drill Bit and VC 20/40 Vacuum Cleaner

### What does Safe Set™ mean?

Hilti Safe Set™ Technology eliminates the most load-affecting and time-consuming step in the installation process: cleaning the hole before injection of the adhesive. The system improves productivity because the drill hole doesn't have to be manually cleaned before installing the adhesive.

## Ordering information

### HIT-HY 200 Adhesive Anchors

Order Description*	Contents	Item No. Single
<b>HIT-HY 200-A 330ml master carton</b>	Includes (25) HIT-HY 200-A 11.1oz (330ml) foil packs and a red cassette for the HDM and HDE 500-A18 dispensers	3499473
<b>HIT-HY 200-R 330ml master carton</b>	Includes (25) HIT-HY 200-R 11.1oz (330ml) foil packs and a red cassette for the HDM and HDE 500-A18 dispensers	3499474
<b>HIT-HY 200-A 500ml master carton</b>	Includes (20) HIT-HY 200-A 16.9oz (500ml) foil packs and a red cassette for the HDM and HDE 500-A18 dispensers	3499475
<b>HIT-HY 200-R 500ml master carton</b>	Includes (20) HIT-HY 200-R 16.9oz (500ml) foil packs and a red cassette for the HDM and HDE 500-A18 dispensers	3499476

### Hilti Hollow Drill Bits

Order Description*	Working Length	Item No. Single	Item No. 4 pack
<b>TE-CD Hollow Drill Bit 1/2"-13"</b>	8 in	02018941	03497391
<b>TE-CD Hollow Drill Bit 3/4"-14"</b>	9-1/2 in	02018947	03497394
<b>TE-YD Hollow Drill Bit 7/8"-24"</b>	15-1/2 in	02018961	03497388
<b>TE-YD Hollow Drill Bit 1 1/8"-24"</b>	15-1/2 in	02018965	03497390

### Hilti HIT-Z Anchor Rods

Order Description*	Bit Dia. (in.)	Min. Embed. (in.)	Qty	Item No. HIT-Z Carbon Steel	Qty	Item No. HIT-Z-R SS 316
<b>HIT-Z Rod 3/8" x 5 1/8"</b>	7/16"	2-3/8"	40	02018441	40	02018452
<b>HIT-Z Rod 1/2" x 6 1/2"</b>	9/16"	2-3/4"	20	02018444	20	02018455
<b>HIT-Z Rod 5/8" x 8"</b>	3/4"	3-3/4"	12	02018447	12	02018458
<b>HIT-Z Rod 3/4" x 8 1/2"</b>	7/8"	4"	6	02018449	6	02018460

\*Please see the 2013 full-line catalog for additional sizes / quantities.

## Combo and save

### HIT-HY 200 Combos

Order Description	Contents	Item No. Single
<b>HIT-HY 200-R TE-YD Starter Package</b>	Includes TE 70-ATC, VC 40-U, (40) HIT-HY 200-R 16.9oz (500ml) foil packs, HDE 500-A18, (1) C 4/36 Li-Ion charger, (2) B 18/1.6 Li-Ion, HIT-CR 500, (1) TE-YD 3/4"-24", (1) TE-YD 7/8"-24", (1) TE-YD 1"-24", (1) TE-YD 1-1/8" x 24" and a small tool bag	3497231
<b>HIT-HY 200-A TE-YD Starter Package</b>	Includes TE 70-ATC, VC 40-U, (40) HIT-HY 200-A 16.9oz (500ml) foil packs, HDE 500-A18, (1) C 4/36 Li-Ion charger, (2) B 18/1.6 Li-Ion, HIT-CR 500, (1) TE-YD 3/4"-24", (1) TE-YD 7/8"-24", (1) TE-YD 1"-24", (1) TE-YD 1-1/8" x 24" and a small tool bag	3497232
<b>HIT-HY 200-R TE-CD Starter Package</b>	Includes TE 30-C AVR, VC 40-U, (40) HIT-HY 200-R 16.9oz (500ml) foil packs, HDE 500-A18, (1) C 4/36 Li-Ion charger, (2) B 18/1.6 Li-Ion, HIT-CR 500, (1) TE-CD 1/2"-13", (1) TE-CD 9/16"-14", (1) TE-CD 5/8"-14", (1) TE-CD 3/4"-14" and a small tool bag	3497373
<b>HIT-HY 200-A TE-CD Starter Package</b>	Includes TE 30-C AVR, VC 40-U, (40) HIT-HY 200-A 16.9oz (500ml) foil packs, HDE 500-A18, (1) C 4/36 Li-Ion charger, (2) B 18/1.6 Li-Ion, HIT-CR 500, (1) TE-CD 1/2"-13", (1) TE-CD 9/16"-14", (1) TE-CD 5/8"-14", (1) TE-CD 3/4"-14" and a small tool bag	3497374
<b>HIT-HY 200-A 500ml (5) master cartons and vacuum</b>	Includes (100) HIT-HY 200-A 16.9oz (500ml) foil packs and a VC 40-U Vacuum	3499396
<b>HIT-HY 200-A 500ml (10) master cartons and vacuum</b>	Includes (200) HIT-HY 200-A 16.9oz (500ml) foil packs and a VC 40-U Vacuum	3499397
<b>HIT-HY 200-R 500ml (5) master cartons and vacuum</b>	Includes (100) HIT-HY 200-R 16.9oz (500ml) foil packs and a VC 40-U Vacuum	3499398
<b>HIT-HY 200-R 500ml (10) master cartons and vacuum</b>	Includes (200) HIT HY 200-R 16.9oz (500ml) foil packs and a VC 40-U Vacuum	3499399

**Hilti. Outperform. Outlast.**