



online heifer sale

Monday, March 7 through Wednesday, March 9, 2016
www.holsteinplaza.com | Auction closes at 4:00 p.m. (EST)



photos © Han Hopman



Sourcing Genetics for the World



AMS Genetics can source embryos to fit your individual requirements.
If you want production or shine in the show ring AMS Genetics is your starting point!

EXAMPLES OF DONOR COWS THAT AMS GENETICS IS WORKING WITH



Ms Apples Akeeva *RC
GTPI+1985 PTAT+2.91
*RC Atwood direct from APPLE



Golden-Oaks Mcc Charlina
GTPI+2302 PTAT+3.89
Top 10 PTAT Heifer in the U.S.



Ladys-Manor Kboy Shalva
GTPI+2608 +694NM\$ +3.10T
Backed by the Ruby D Shawn family



Cache-Valley Lheros 2331 EX-96
All-American and All-Canadian
Undeafated in 2015

AMS Genetics has 30 years experience in the sourcing and exportation of Holstein embryos to the world. Although many things changed over the 30 years, one thing is still constant, our commitment to our clients to provide great service and to locate and obtain the genetics that they need. If you are looking to purchase embryos to introduce new genetics into your A.I. company or your herd, AMS Genetics will be your partner in sourcing the U.S. genetic base and handling the exportation. We can adapt our selection to emphasis your selection criteria, so we focus on the genetics that will do the best job for your goals.

Services:

- Sourcing and locating embryo donors
- Herd visitation selection tours
- Contracting of donors
- Complete coordination of: embryo recovery, health certification and documentation, inland assembly and international shipment insurance
- Housing and management assistance for cattle housed in the United States
- Sire sourcing/selection for A.I. companies worldwide
- Commercial dairymen sire sourcing and selection



CONTACT INFO

AMS Genetics International LLC
Mail address: PO Box 12 | Fairplay, MD 21733-0012 USA
Office Phone: +001 240-329-0169
Steve Mower Cell: +001 240-520-5906
Email: steve.mower@amsgenetics.com

www.amsgenetics.com



www.holsteinplaza.com

ONLINE HEIFER SALE | MARCH 7-9, 2016

HOW DOES THE SALE WORK:

This is a traditional English auction, which starts low and allows bidders to place progressively higher bids. Each lot closes at staggering times (every 3 minutes) starting at 4:00 p.m. (EST) on Wednesday, March 9, and the highest bidder then wins the lot.

There are two ways of bidding - either directly through the internet (www.holsteinplaza.com) or by contacting one of the sale staff members listed. All bids are made in U.S. dollars.

When you place a bid, you enter the maximum amount you're willing to pay for the lot. The other bidders and the sale organization will not be able to see your maximum bid. Through this Proxy bidding system, the Holstein Plaza auction system will increase your bid to the next lowest price when another user bids on the same item. The proxy bidding process continues until your maximum bid amount is reached or the auction ends. Every bidder is bound to his bid. The sale is using the popcorn bid system/5-minute rule. Until that moment bids will be accepted.

All lots sell with reasonable starting bid. The bid increments will be as follows: < \$10,000 - \$250; \$10,000-\$20,000 - \$500; \$20,000-\$50,000 - \$1,000; \$50,000-\$100,000 - \$2,000 and > \$100,000 - \$5,000

Please refer to the terms and conditions in the back of your sale catalog for complete details.

sale managed by:



THE BUYING STOP FOR DAIRYMEN AROUND THE WORLD

P.O. Box 12, Fairplay, Maryland 21733-0012 USA

Ph. 240-329-0169 | Fax 240-469-4231

info@holsteinplaza.com | www.holsteinplaza.com

SALES STAFF:

HOLSTEIN PLAZA

Jennifer Dingbaum +1 320-250-2412

jennifer.dingbaum@holsteinplaza.com

Steve Mower +1 240-520-5906

steve.mower@amsgenetics.com

Hendrik Albada +1 240-520-1566

hendrik.albada@holsteinplaza.com

Amanda Hauck +1 570-765-0536

amanda.hauck@amsgenetics.com

Ray LeBlanc +1 802-249-2155

Nick Raggi +1 443-762-8338

Bill Rauen +1 563-607-0694

Austin Yoder +1 478-244-9063

AUSTRALIA

Declan Patten 011 61499 949 292

EUROPE

Jan de Vries +31 (0)6 26250502

jandevries@diamond-genetics.nl

Arjan van der Vlis +31 (0)6 43985150

arjan@eurogenes.nl

Alison Maddrell +44 77 48960267

alison@diamondgenetics.co.uk



MANAGEMENT/TRANSPORT:

All auction sales will be handled through AMS Genetics International. AMS will also assist as needed in transport coordination. Transport is the cost of the buyer and will not be allowed until payment has been made. For foreign buyers, AMS Genetics can assist with housing and management of purchases.

HOUSING CONTACT: Steve Mower 240-520-5906



L-MAPLES HVEZDA CALLI-RED EX-92-3YR
DAM OF LOT 1



ROLL-N-VIEW CAMILLA-RED
LOT 1



L-MAPLES HVEZDA CALLI-RED EX-92
DAM OF LOT 1

LOT 1

ROLL-N-VIEW CAMILLA-RED

Holstein Plaza Contacts:

Steve Mower +1 240-520-5906
Jennifer Dingbaum +1 320-250-2412
Hendrik Albada +1 240-520-1566
Amanda Hauck +1 570-765-0536

Scientific B Defiant-ET *RC

141123484 100%RHA-NA *TV *TL *TY
PTA +379M -17F +2P 92%R 12/15
PTA -2.4PL 3.12SCS -2.6DPR 6.3%DCE
PTA +3.46T +2.41UDC +2.31FLC 88R 12/15
GTPI +1712G

L-Maples Hvezda Calli-Red

71254967 Excellent-92 EEEEE @ 3-03
3-02 2x 138d 16520 3.4 561 3.1 504 inc.
2-00 2x 349d 26110 3.4 875 3.5 916

USA 3130799834 Born: 7-September-2015
ONLY RED Defiant x Calli

Regancrest S Braxton-ET

61898423 *TR *TV *TL *TY *TD
PTA +1050M -11F +3P 99R 12/15
PTA +2.57T +1.07UDC +1.48FLC 99R
GTPI +1463G

Scientific Gold Dior Rae-ET

138328405 Excellent-92 EEEEE DOM
2-02 2x 365d 31900 4.7 1484 3.7 1172

Orbe-View S Strm Hvezda *RC

52760801 *TV *TL *TY *TD
PTA -96M -15F +3P 99%R 12/15
PTA +1.90T +.84UDC +1.85FLC
GTPI +1570G

L-Maples Advent Cait-Red

13859709 Excellent-91 2E EEEEE
2-03 2x 305d 21070 3.4 719 3.0 637
4-06 2x 305d 25520 3.0 774 3.0 775
• 4x Top 5 finisher at World Dairy Expo
• Gr Champ, Midwest Summer R&W 2012
• Res Gr Champ, WI Dist. 5 Holstein 2012

CALLI!

- Unanimous AA R&W Jr 3-Yr-Old 2015
- Nominated All-American Jr 3-Yr-Old 2015
- Nominated All-Canadian Jr 3-Yr-Old 2015
- Nominated All-Canadian R&W Jr 3-Yr-Old
- Unanimous All-American Jr 2-Yr-Old 2014
- 1st Jr 3-Yr-Old, Royal R&W Show 2015
- Int & Grand Champion, Royal R&W 2015
- Grand & Supreme Champ, E Fall Nat'l 2015
- Res Grand Champ, MD State Fair B&W 2015
- 1st Jr 2-Yr-Old, International R&W Show 2014
- 1st Jr 2-Yr-Old All-American R&W Show '14
- Res Gr Champ, Premier Nat'l Jr Show 2014
- Res Jr All-American R&W Spring Yrlg 2013
- Nom All-American R&W Spring Yrlg 2013
- All-American R&W Spring Calf 2012

3rd thru 4th Dams

L-Maples R Candy-Red EX-91 EX-MS 3E
6-09 2x 305d 26410 3.5 916 3.3 882
Life: 1525d 122110 3.5 4299 3.4 4129
Elmoak Magnum Candine-Red
VG-86 VG-MS
2-04 2x 305d 21780 3.7 803 3.4 732



EASTVIEW LHEROS LANI-ET EX-94
3RD DAM LOT 2

LOT 2

EASTVIEW GOLDUST CALLIE-ET

840 3131676897

Born: 12-September-2015

Holstein Plaza Contacts:

Steve Mower +1 240-520-5906
Jennifer Dingbaum +1 320-250-2412
Hendrik Albada +1 240-520-1566
Amanda Hauck +1 570-765-0536

USA	Milk	Fat	Prot	SCS	DPR	PL	FLC	UDC	PTAT	DCE	NM	GTPI
12/15	+336	+16	+2	2.85	-2.2	+0.9	+3.11	+2.90	+3.92	6.8%	+129	+2029

Sonnek Golddust-ET

70984352 *TV *TL *TY *TD
PTA -193M +2F -14P 79%R 12/15
PTA +1.2PL 2.78SCS -.7DPR
PTA +3.23T +3.25UDC +2.01FLC 79%R
GTPI +1945G

Eastview Bryer-ET

7229620 Born: September 9, 2013
• Due April 2016, looks great!
• Potential 6th generation Excellent!

Mr Chasity Gold Chip-ET

140145553 *TR *TV *TL *TY *TD
PTA -237M +2F -22P 99%R 12/15
PTA +2.46T +2.48UDC +2.24FLC
GTPI +1904G

Sonnek Damion Charlie-ET

138545776 Excellent-94 EEEEE 2E
Life: 1804 121730 4.1 4961 3.7 4481

Canyon-Breeze At Airlift-ET

6897620 *TV *TL *TY *TD
PTA +801M +21F +2P 97%R 12/15
PTA +3.53T +1.74UDC +3.98FLC
GTPI +1991G

Eastview Clark Chloe-ET

70317804 Excellent-90 EX-MS @ 3-08
2-00 2x 365d 23520 3.7 863 3.2 764
3-05 2x 305d 25330 4.0 1003 3.1 791

3rd thru 8th Dams

Eastview Lheros Lani-ET

EX-94 3E EEEEE
4-09 2x 354d 24210 4.0 962 667 31 543
Life: 119810 3.9 4679 3.2 3835

- 1st Aged Cow VA Spr. & Sum. Show '13
- 2nd Aged MD State Fair '12 & '13

Rilara Drhm Teddy Dallas-ET EX-90

2-03 2x 365d 31920 3.3 1064 3.2 1024

Rilara B-S Raven Teddy-ET

EX-91 EX-MS
3-03 2x 365d 26550 2.8 739 2.8 755
• 1st Jr. 3-Yr-Old Eastern Nat'l '93

Rilara Mars Las Raven EX-90 EX-MS 2E

8-05 2x 365d 23960 3.4 820 2.8 681
Life: 162220 3.3 5396 2.9 4692

- Full sister to:

Rilara Mars Las Ravena EX-91

- Dam of Briarpatch-R Misty VG-85

Rilara Haven Charming Las-TW

VG-87 GMD DOM
6-10 2x 365d 30490 3.4 1029
Life: 164400 3.4 5651

Rag Apple Locust-Grove Charm-ET

VG-86 VG-MS GMD DOM
5-02 2x 365d 26320 3.6 948



WHITE-G-D SUPERSIRE CARLEE
DAM OF LOT 3



GAF-FINE OBSERV CARLESHA VG-86-2YR
2ND DAM OF LOT 3

LOT 3

MS WHISPER-O DOZER CAYLA-ET

USA 73947800

Born: 7-November-2015

Holstein Plaza Contacts:

Steve Mower +1 240-520-5906
Jennifer Dingbaum +1 320-250-2412
Hendrik Albada +1 240-520-1566
Amanda Hauck +1 570-765-0536

USA	Milk	Fat	Prot	SCS	DPR	PL	FLC	UDC	PTAT	NM	GTPI
12/15	+1729	+60	+53	2.58	+1.8	+8.5	+1.01	+1.99	+1.90	+830	+2656

Mr Shot Dozer 1491-ET

72128280 *TV *TL *TY *TD
PTA +1464M +48F +48P 78%R 12/15
PTA +9.6PL 2.55SCS +2.9DPR
PTA +1.54T +1.82UDC +1.34FLC 78%R
GTPI +2618G

White-G-D Supersire Carlee

70454557 Born: July 9, 2013
GTPI+2476 +1830M +93F +59P +1.64T
2-05 2x 31d 2477 4.3 106 3.2 79 inc.
• Fresh and looks great!
• Currently milking 95 lbs/day, .3 SCC!

Butz-Butler Shotgun-ET

70476870 *TV *TL *TY *TD
PTA +1779M +47F +43P 96%R 12/15
PTA +1.17T +1.23UDC +1.54FLC
GTPI +2360G

Miss OCD Robst Delicious-ET

3006989479 VG-87 VG-MS DOM
2-05 2x 305d 25780 3.5 908 3.3 841

Seagull-Bay Supersire-ET

69981349 *TV *TL *TY *TD
PTA +2359M +110F +71P 99R 12/15
PTA +1.60T +.68UDC +.55FLC
GTPI +2719G

Gaf-Fine Observ Carlesha

65943592 Very Good-86-2YR VG-MS
GTPI+2226 +488M +33F +28P +1.58T
2-05 2x 365d 28690 4.0 1156 3.6 1029
• Maternal sister to Cosworth @ Intermizoo

3rd thru 9th Dams

Larcrest Chessa-ET
EX-90 EVEE DOM
2-08 2x 365d 25150 4.5 1126 3.9 977

Larcrest Crimson-ET
EX-93 2E GMD DOM
5-02 2x 365d 46390 5.3 2448 3.7 1708
Life: 135610 5.0 6727 3.8 5180

Larcrest Cosmopolitan VG-87 GMD DOM
2-04 2x 365d 30930 4.1 1261 3.6 1119

Larcrest Oside Champagne-TW
EX-90 GMD DOM
2-03 2x 365d 29110 4.5 1322 3.7 1077
• 17 sons in A.I. worldwide

Larcrest Juror Chanel
EX-93 3E GMD DOM
9-00 2x 365d 48460 4.0 1943 3.4 1648
Life: 2899d 245420 4.3 10482 3.6 8866

Larcrest Lindy Chandra VG-85
2-05 2x 365d 20896 4.8 993 3.8 803

Larcrest Inspiration Carly VG-87
3-05 2x 305d 21800 4.5 973 3.3 802



PINE-TREE DIEHARD SHARLA VG-88 VG-MS GMD
2ND DAM LOT 4

LOT 4

PINE-TREE 5488 SUPE 6821

840 3132116673

Born: 12-August-2015

Holstein Plaza Contacts:

Steve Mower +1 240-520-5906
Jennifer Dingbaum +1 320-250-2412
Hendrik Albada +1 240-520-1566
Amanda Hauck +1 570-765-0536

USA	Milk	Fat	Prot	SCS	DPR	PL	FLC	UDC	PTAT	DCE	NM	GTPI
12/15	+1836	+83	+62	2.76	+1.8	+6.9	+1.39	+1.26	+1.43	6.3%	+843	+2639

Cogent Supershot

NL 755898903 *TV *TL *TY *TD
PTA +2122M +75F +68P 78%R 12/15
PTA +872NM\$ +7.8PL 2.80SCS +3.4DPR
PTA +1.11T +.74UDC +.77FLC 76%R
GTPI +2683G

Pine-Tree 4233 Mogu 5488-ET

71859066 Very Good-85 VG-MS DOM
GTPI+2461 +1497M +68F +44P +2.11T
1-11 3x 184d 14680 4.3 630 3.4 497 inc.

Seagull-Bay Supersire-ET

69981349 *TV *TL *TY *TD
PTA +2359M +110F +71P 99%R 12/15
PTA +1.60T +.68UDC +.55FLC
GTPI +2719G

Rose Super Shot

DE 53674539 Very Good-88-2YR

Mountfield SSI Dcy Mogul-ET

3006972816 *TR *TV *TL *TY *TD
PTA +1439M +90F +43P 99%R 12/15
PTA +2.57T +2.62UDC +2.64FLC
GTPI +2540G

Pine-Tree Diehard Sharla-ET

66882385 Very Good-88 VVVEV GMD
2-02 3x 305d 33330 3.4 1130 3.1 1042
• Several sons in AI

3rd thru 9th Dams

Pine-Tree Mint Sharla-ET DOM

• Several sons in AI
Pine-Tree Outside Mint-ET VG-87 DOM
4-02 3x 365d 33710 4.2 1407 3.1 1059
Wesswood-HC Rudy Missy-ET
EX-92 3E DOM
4-11 3x 365d 40880 4.1 1665 3.2 1308
Life: 1262d 119610 4.1 4885 3.2 3804
Wesswood Elton Mimi EX-90 GMD DOM
3-05 2x 365d 35380 3.3 1160 3.2 1121
Wesswood Mandingo Ivy VG-87 VEEVV
6-05 2x 365d 36330 3.6 1305 3.0 1087
Life: 1835d 144060 3.4 4933 3.1 4412
Wesswood Astro Matt Esther
VG-87 GMD DOM
6-08 2x 365d 31860 3.5 1125 3.1 982
Life: 1847d 140110 3.6 5029 3.2 4424
Wesswood Bell Claudette
VG-87 GMD DOM
9-10 2x 365d 38810 3.6 1383 2.9 1140
Life: 3634d 280980 3.6 9997 3.1 8625



SAVAGE-LEIGH LEONA EX-96 EEEEE
DAM OF LOT 5

SAVAGE-LEIGH GOLDEN GIRL VG-88-2YR
MATERNAL SISTER TO LOT 5

LOT 5

SAVAGE-LEIGH LYSI-ET

840 3123796949

Born: 8-December-2015

Holstein Plaza Contacts:

Steve Mower +1 240-520-5906
Jennifer Dingbaum +1 320-250-2412
Hendrik Albada +1 240-520-1566
Amanda Hauck +1 570-765-0536

Walnutlawn Solomon

11775998C *TR *TV *TL *TY *TD
PTA +96M +21F +10P 78%R 12/15
PTA +174NM\$ -1.1PL 2.91SCS
PTA +3.60T +2.85UDC +2.03FLC
GTPI +2094G

Savage-Leigh Leona-ET

61604187 Excellent-96 EEEEE 2E GMD
5-05 2x 365d 42050 4.3 1796 3.2 1343
Life: 2244d 208360 4.1 8644 3.4 7052
• 6x All-American Nominee
• Nom All-American 125,000 lb Cow 2015
• Nom All-American 125,000 lb Cow 2014
• Nom All-American 125,000 lb Cow 2013
• Res All-American 125,000 lb Cow 2012
• Grand Champion, Eastern Fall Nat'l 2012
• Res Senior Champ, Eastern Fall Nat'l 2011
• Nom All-American & All-Canadian 2010
• 6th Jr 3-Yr Old, Int'l Holstein Show 2008
• HHM All-American Jr 2-Yr Old 2007

Val-Bisson Doorman

107281711C *TV *TL *TY *TD
PTA -49M +27F +21P 93%R 12/15
PTA +3.26T +2.23UDC +1.96FLC
GTPI +2262G

Misty-Springs Lavanguard Sue

9979603C Very Good-89-CAN 3*
4-03 2x 365d 30124 4.6 1380 3.2 968

Canyon-Breeze Allen-ET

17129288 *TV
PTA -814M -14F -14P 99%R 12/15
PTA +1.26T +.39UDC +1.12FLC
GTPI +1377G

Savage-Leigh Licorice-ET

60317090 Excellent-92 GMD DOM
4-02 2x 365d 51220 4.3 2179 3.3 1693
Life: 1018d 113740 4.4 4968 3.4 3858
• Nominated All-American 2006
• HHM All-American 5-Yr Old Cow 2006
• Nom All-American Produce 2011 & 2012

Maternal sisters to Lot 5

Savage-Leigh Golden Girl-ET VG-88-2YR

- Reserve Jr All-American Milking Yrlg 2014
- Nom All-American Milking Fall Yrlg 2014
- 2nd Milking Fall Yearling, WDE 2014

Savage-Leigh Gold Lala

- HM Junior Champ, Eastern Fall Nat'l 2015
- 5th Winter Calf, International Holstein 2015
- 3rd Winter Calf, International Jr Holstein 2015

3rd thru 8th Dams

Savage-Leigh Bellwood Linda

EX-92 2E GMD DOM
2-10 2x 365d 40240 5.8 2349 3.4 1358
Life: 1312d 126760 5.2 6576 3.2 4076
• Nom All-American Jr. 3-Year-Old 1999
• Nom Global Cow of the Year 2005

Savage-Leigh Star Linda-ET VG-87 GMD

2-02 2x 365d 30890 4.0 1236 3.1 952
Savage-Leigh Glenview Linda
EX-90 EVVE GMD DOM
6-08 2x 365d 41820 4.6 1936 3.0 1247
Life: 1892d 150300 4.4 6636 3.2 4813

Savage-Leigh Lindas Chairman GP-84

5-10 2x 365d 30620 3.8 1167 3.3 1013
Life: 1972d 121550 3.9 4718 3.3 4013

Savage-Leigh Creek Lydia VG-88

4-11 2x 344d 16390 4.2 685 3.1 511

Savage-Leigh Kate Linda VG-85

6-01 2x 305d 19940 4.0 793



**CALBRETT SUPERSIRE BARB *RC VG-86-2YR VG-MS
DAM LOT 6**

**RAINYRIDGE TALENT BARBARA *RC EX-95
3RD DAM LOT 6**

LOT 6

MS DG-TM DOZER BRISTOL

USA 3128162357

Born: 18-August-2015

Holstein Plaza Contacts:

Steve Mower +1 240-520-5906
Jennifer Dingbaum +1 320-250-2412
Hendrik Albada +1 240-520-1566
Amanda Hauck +1 570-765-0536

USA	Milk	Fat	Prot	SCS	DPR	PL	FLC	UDC	PTAT	DCE	NM	GTPI
12/15	+891	+51	+39	2.62	+2.8	+8.0	+1.51	+2.02	+2.02	6.7%	+729	+2562

Mr Shot Dozer 1491-ET

72128280 *TV *TL *TY *TD
PTA +1464M +48F +48P 78%R 12/15
PTA +9.6PL 2.55SCS +2.9DPR
PTA +1.54T +1.82UDC +1.34FLC 78%R
GTPI +2618G

Calbrett Supersire Barb-ET *RC

CAN 11658906 Very Good-86-2YR VG-MS
GTPI+2556 1640M +71F +54P +2.36T
2-04 2x 137d 12285 4.8 595 3.0 369 RIP
• #1 GTPI Red Carrier Cow in the Breed
• Dam of #1 GTPI Olympian son in the Breed
• Dam of #2 Red Carrier Female in the Breed
• Dam of only *RC bull >+2500G & >3 PTAT
• Sons at Semex, Select, Cogent & St. Jacobs
• Top Seller 2013 Cormdale Sale \$265,000

Butz-Butler Shotglass-ET

70476870 *TV *TL *TY *TD
PTA +1779M +47F +43P 96%R 12/15
PTA +1.17T +1.23UDC +1.54FLC
GTPI +2360G

Miss OCD Robst Delicious-ET

3006989479 VG-87 VG-MS DOM
2-05 2x 305d 25780 3.5 908 3.3 841

Seagull-Bay Supersire-ET

69981349 *TV *TL *TY *TD
PTA +2359M +110F +71P 99R 12/15
PTA +1.60T +.68UDC +.55FLC
GTPI +2719G

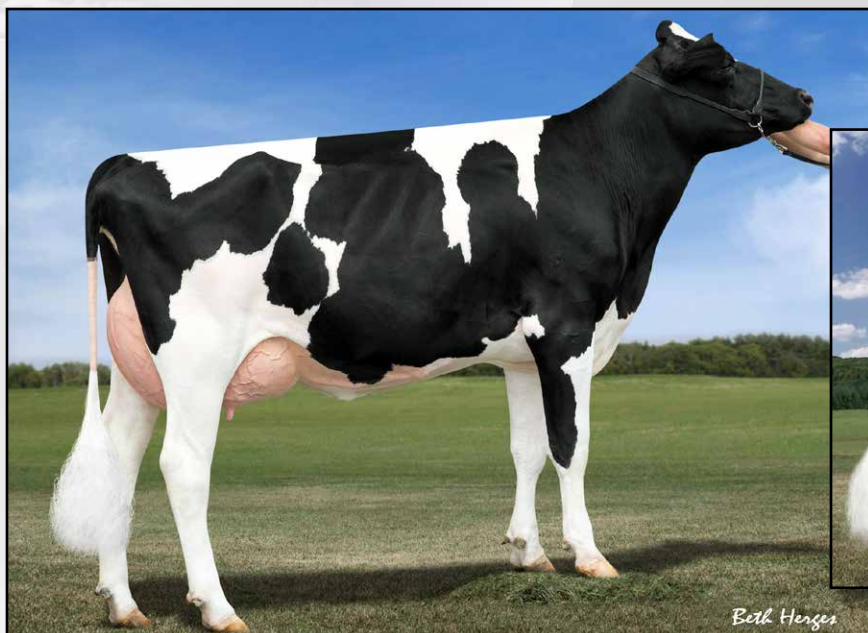
Rainyridge Super Beth-ET

CAN 11060180 Very Good-86-2YR-CAN
2-03 2x 365d 23739 3.7 877 3.5 822
4-06 2x Proj. 28739 3.9 1116 3.5 1014
• Sons in AI

3rd thru 6th Dams

Rainyridge Talent Barbara *RC

EX-95 EEEEE 8*
3-04 2x 365d 34465 3.6 1257 3.3 1133
• HHM All-American Aged Cow 2011
• Unanimous All-American 5-Yr-Old Cow 2010
• Unanimous All-Canadian 5-Yr-Old Cow 2010
• Nom All-American Jr 3-Yr-Old Cow 2008
• Nom All-Canadian Jr 3-Yr-Old Cow 2008
RF Outside Breeze-ET EX-95 EEEEE 2E 2*
8-00 3x 365d 37970 3.9 1484 3.4 1298
Life: 1896d 165379 4.6 7560 3.6 5793
• Gr Champ, Southern Nat'l Spring Show 2011
• 1st 5-Yr-Old, Manitoba Spring 2008
Rayverley Briana Milan-ET EX-CAN 2E 6*
6-03 2x 365d 27075 3.4 928 3.2 862
Rainyridge Tony Beauty EX-CAN 5E 9*
Life: (8 Lacs) 199869 3.3 6592 3.2 6455
• All-Canadian Mature Cow '92, '93, '95, '99
• All-American Aged Cow '92, '95, '99
• Supreme Champion WDE '95, '99
• Res Gr Champion, Royal '95, '99
• All-American People's Choice Winner '99
• HI Cow of the Year 1999
• Grand Champ, Royal Winter Fair 1993
• Nom. All-Canadian Mature Cow 1991
• HM All-Canadian 4-Yr-Old Cow 1989



LARCREST MS CHANDA VG-85
2ND DAM LOT 7



LARCREST CRIMSON EX-93 2E GMD DOM
4TH DAM OF LOT 7

LOT 7

ENDCO SILVER CARRY 341

USA 3133371119

Born: 13-December-2015

Holstein Plaza Contacts:

Steve Mower +1 240-520-5906
Jennifer Dingbaum +1 320-250-2412
Hendrik Albada +1 240-520-1566
Amanda Hauck +1 570-765-0536

USA	Milk	Fat	Prot	SCS	DPR	PL	FLC	UDC	PTAT	DCE	NM	GTPI
12/15	+2010	+90	+63	2.90	+0.9	+5.2	+1.75	+0.99	+1.61	5.7%	+778	+2587

Seagull-Bay Silver-ET

72254526 *TV *TL *TY *TD
PTA +1715M +102F +57P 78%R 12/15
PTA +4.6PL 2.88SCS -1.00DPR
PTA +2.57T +2.05UDC +2.47FLC 78%R
GTPI +2630G

Peak Charm-ET

3013060745 Born: October 3, 2013
GTPI+2592 +2024M +64F +62P +1.50T
• Fresh and looks great!
• Dam of the #5 POLLED bull in the World!
• Rubicon daughter sold for \$122,000

Mountfield SSI Dcy Mogul

3006972816 *TR *TV *TL *TY *TD
PTA +1439M +90F +43P 99%R 12/15
PTA +2.57T +2.62UDC +2.64FLC
GTPI +2540G

Seagull-Bay Snow Darling

70640273 Very Good-86 DOM
2-02 2x 365d 35620 3.5 1257 3.0 1077

Pine-Tree altaOak-ET

69169951 *TV *TL *TY *TD
PTA +1668M +51F +52P 96%R 12/15
PTA +1.67T +1.41UDC +1.21FLC
GTPI +2465G

Larcrest Ms Chanda-ET

57187380 Very Good-85-2YR
2-05 2x 305d 22680 4.1 925 3.2 732
• Sire: Roylane Socra Robust

3rd thru 9th Dams

Larcrest Chenoa-ETS

VG-87 VVVVV DOM
2-04 2x 365d 35930 4.1 1487 3.5 1259
• Several sons in AI, including Vekis Chevrolet
Larcrest Crimson-ET EX-93 2E GMD DOM
5-02 2x 365d 46390 5.3 2448 3.7 1708
Life: 135610 5.0 6727 3.8 5180

Larcrest Cosmopolitan VG-87 GMD DOM

2-04 2x 365d 30930 4.1 1261 3.6 1119
Larcrest Oside Champagne-TW
EX-90 GMD DOM
2-03 2x 365d 29110 4.5 1322 3.7 1077
• 17 sons in A.I. worldwide

Larcrest Juror Chanel

EX-93 3E GMD DOM
9-00 2x 365d 48460 4.0 1943 3.4 1648
Life: 2899d 245420 4.3 10482 3.6 8866

Larcrest Lindy Chandra VG-85

2-05 2x 365d 20896 4.8 993 3.8 803
Larcrest Inspiration Carly VG-87
3-05 2x 305d 21800 4.5 973 3.3 802



OCD SUPERSIRE EMBARK VG-87-2YR
LOT 8

LOT 8

OCD SUPERSIRE EMBARK VG-87-2YR

Holstein Plaza Contacts:

Steve Mower +1 240-520-5906
Jennifer Dingbaum +1 320-250-2412
Hendrik Albada +1 240-520-1566
Amanda Hauck +1 570-765-0536

USA 3010975399 Very Good-87 +V+VV DOM at 2-08 Born: 23-December-2012
2-00 3x 312d 27312 3.9 1060 3.1 844 Fresh 1/10/16 and milking 110 lbs/day

USA	Milk	Fat	Prot	SCS	DPR	PL	FLC	UDC	PTAT	SCE	NM	GTPI
12/15	+1692	+75	+51	2.80	+1.2	+6.7	+0.53	+0.35	+1.02	6.8%	+746	+2464

Seagull-Bay Supersire

69981349 *TV *TL *TY *TD
PTA +2359M +110F +71P 99%R 12/15
PTA +7.0PL 2.92SCS +0.9DPR 3.8%DCE
PTA +.68T +.55UDC +1.60FLC 98%R
GTPI +2719G

OCD Freddie Everlast-ET

3008315284 Very Good-85 VG-MS

Roylane Socra Robust-ET

64966739 *TR *TV *TL *TD
PTA +946M +71F +42P 99%R 12/15
PTA +.85T +.75UDC +1.20FLC 99%R
GTPI +2491G

Ammon-Peachey Shauna

66228178 Excellent-91 GMD DOM
2-01 3x 340d 32765 4.1 1336 3.0 999

Badger-Bluff Fanny Freddie-ET

60996956 99%RHA-NA *TV *TL
PTA +831M +30F +26P 99%R 12/15
PTA +.40T +.56UDC +1.57FLC
GTPI +2233G

OCD Planet Embassy

3008315284 Very Good-85
3-01 3x 365d 37350 3.1 1164 3.0 1133

3rd thru 10th Dams

Kings-Ransom PMR Embassy-ET EX-91

4-00 3x 305d 35500 4.3 1532 3.3 1159
Life: 1115d 107060 4.2 4481 3.3 3515

BDG Genetics Add Elda-ET

VG-85 GMD DOM
6-00 3x 365 43640 3.2 1396 2.8 1236
Life: 1694d 164760 3.2 5241 3.0 4864

Shadycrest-H Rick Econo-ET VG-87 DOM

2-05 365 28150 4.0 1118 3.4 963

Shadycrest Roebuck Ellie VG-85 DOM

3-08 365 47220 3.6 1677 3.3 1548

Life: 193090 3.2 6203 3.2 6123

Shadycrest Elton Loretta VG-85 DOM

2-01 360 25510 3.7 955 3.5 891

Shadycrest Lorna Cleitus

VG-85 GMD DOM
5-01 365 38150 5.2 1992 3.8 1435

Life: 110560 4.8 5271 3.6 4031

Shadycrest Laura Walkway Mark VG-85

3-11 365 22810 4.4 1005 3.5 794

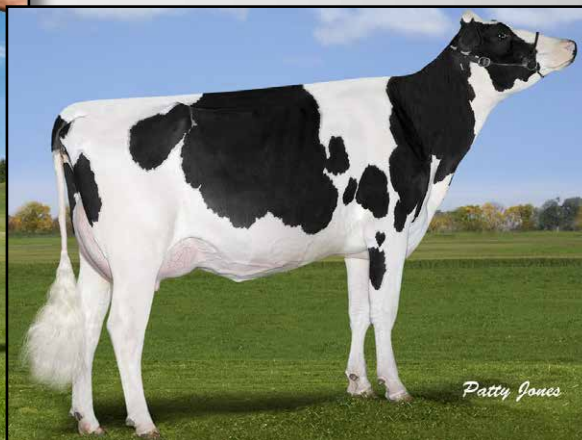
Shadycrest Mowry-C Fleetridge

VG-87 DOM

Life: 133650 4.1 5417 3.1 2812



SNOWBIZ SYMPATICO SHYLA *RC
DAM OF LOT 9



GEN-I-BEQ SNOWMAN SPRING *RC VG-85-2YR
2ND DAM OF LOT 9

LOT 9

DG TM DELTA SOPHIE-ET *RC

840 3128162380

Born: 1-June-2015

Holstein Plaza Contacts:

Steve Mower +1 240-520-5906
Jennifer Dingbaum +1 320-250-2412
Hendrik Albada +1 240-520-1566
Amanda Hauck +1 570-765-0536

USA	Milk	Fat	Prot	SCS	DPR	PL	FLC	UDC	PTAT	DCE	NM	GTPI
12/15	+1536	+83	+42	2.86	+1.3	+5.9	+1.68	+1.30	+1.86	5.9%	+727	+2517

Mr Mogul Delta 1427

72128216 *TV *TL *TY *TD
PTA +1615M +89F +53P 78R 12/15
PTA +8.1PL 2.83SCS +1.6DPR 5.6%DCE
PTA +2.10T +1.87UDC +1.50FLC 78R 12/15
GTPI +2712G

Snowbiz Sympatico Shyla-ET *RC

CAN 108502579 Born: May 16, 2013
GTPI+2333 +1304M +63F +31P +2.05T
• Due June 2016
• Dam of the #1 & #2 *RC heifers in Europe!

Mountfield SSI Dcy Mogul

3006972816 *TR *TV *TL *TY *TD
PTA +1439M +90F +43P 99%R 12/15
PTA +2.57T +2.62UDC +2.64FLC
GTPI +2540G

Miss OCD Robst Delicious-ET

3006989479 VG-87 VG-MS DOM
2-05 2x 305d 25780 3.5 908 3.3 841

Dymenthalm S Sympatico-ET

CAN 11004723 *RC *TV *TL *TY
PTA +1773M +73F +45P 96%R 12/15
PTA +1.85T +1.42UDC +1.22FLC
GTPI +2371G

Gen-I-Beq Snowman Spring-ET *RC *BY

CAN 106807371 Very Good-85-2YR-CAN
2-01 2x 365d 28735 3.3 952 3.1 906
Dam of:
200HO10143 Snowbiz Stonewall-Red

3rd thru 12th Dams

Gen-I-Beq Bolton Secretly *RC

VG-87-CAN 3*
2-01 2x 365d 30474 4.4 1327 3.4 1043

• 1 Superior Lactation

Gen-I-Beq Goldwyn Secret

VG-87-CAN 11*
5-05 2x 365d 30573 4.5 1389 3.4 1038

Gen-I-Beq Durham Sherry VG-87-CAN 8*

5-02 2x 365d 40036 3.9 1574 3.2 1268

Glen Drummond Splendor

VG-86-2YR-CAN 38*
4-10 2x 314d 26510 4.2 1124 3.2 840

Glen Drummond Aero Flower

VG-88-CAN 18*
2-03 2x 326d 25622 4.0 1032 3.4 882

Glen Drummond Shower EX-CAN 14*

4-10 2x 365d 28583 4.8 1380 3.6 1016

Glen Drummond S C Jo Beth

EX-2E-CAN 7*
Life (6 Lacs): 141637 4.2 5994 3.2 3593

• Grand Champion Brant-Wentworth 1984

Glen Drummond Matt Beth VG-85 4*

11-10 2x 365d 25038 3.7 935

Glen Drummond Marquis Beth VG-CAN

Life (5 Lacs): 105953 4.1 4295

Ferglynn Rag Apple Bertha VG-CAN 3*



RAINYRIDGE TALENT BARBARA EX-95 EEEEE
2ND DAM OF LOT 10

EK-STJ BRILLIANT-RED EX-90 EX-MS
DAM OF LOT 10

LOT 10

SHEDD C ADD BRITTLE-RED *PO

USA 143610711

Born: September 2, 2015

Holstein Plaza Contacts:

Steve Mower +1 240-520-5906
Jennifer Dingbaum +1 320-250-2412
Hendrik Albada +1 240-520-1566
Amanda Hauck +1 570-765-0536

Mr Ansly Addiction-P-Red-ET

72128091 100%RHA-NA *TV *TL *TY
PTA -1253M +4F -6P 78%R 12/15
PTA +300NM\$ +4.5PL 2.64SCS
PTA +2.15T +2.59UDC +.82FLC
GTPI +2084G

EK-STJ Brilliant-Red-ET

71311492 Excellent-90 EX-MS
2-02 2x 305d 20240 3.5 705 3.3 661

Tiger-Lily Ladd P-Red-ET

69405976 100%RHA-NA *TV *TL *TY
PTA -1370M -9F -9P 98%R 12/15
PTA +1.98T +1.98UDC +.67FLC
GTPI +1964G

Ms Apples Ainsley-ET *RC

69822262 Excellent-90 EX-MS
2-04 2x 277d 19050 4.5 855 3.4 641

Damartini Attitude-Red-ET

66770680 100%RHA-NA *TV *TL
PTA -836M -56F -28P 99%R 12/15
PTA +.94T +.95UDC +.37FLC
GTPI +1459G

Rainyridge Talent Barbara *RC

7543170C Excellent-95 EEEEE 9*
2-05 2x 298d 24720 4.1 1023 3.2 789
3-04 2x 365d 34465 3.6 1257 3.3 1133
5-00 2x 365d 33548 3.9 1301 3.1 1035

BARBARA!

- HHM All-American Aged Cow 2011
- Res Grand, NY Int'l Spring Show 2011
- Unanimous All-American 5-Yr-Old 2010
- Unanimous All-Canadian 5-Yr-Old 2010
- Nom All-American Best 3 Females 2010
- Nom All-American Jr 3-Yr-Old 2008
- Nom All-Canadian Jr 3-Yr-Old 2008

3rd thru 5th Dams

- RF Outside Breeze-ET EX-95 EEEEE 2E 2***
8-00 3x 365d 37970 3.9 1484 3.4 1298
Life: 1896d 165379 4.6 7560 3.6 5793
- Gr Champ, Southern Nat'l Spring Show 2011
 - 1st 5-Yr-Old, Manitoba Spring 2008
- Rayverley Briana Milan-ET EX-CAN 2E 6***
6-03 2x 365d 27075 3.4 928 3.2 862
- Rainyridge Tony Beauty EX-CAN 5E 9***
Life: (8 Lacs) 199869 3.3 6592 3.2 6455
- All-Canadian Mature Cow '92, '93, '95, '99
 - All-American Aged Cow '92, '95, '99
 - Supreme Champion WDE '95, '99
 - Res Gr Champion, Royal '95, '99
 - All-American People's Choice Winner '99
 - HI Cow of the Year 1999
 - Grand Champ, Royal Winter Fair 1993
 - Nom. All-Canadian Mature Cow 1991
 - HM All-Canadian 4-Yr-Old Cow 1989

EARLY Spark backed by the COOKIECUTTERS!



COOKIECUTTER MOM HALO VG-88 DOM
3RD DAM OF LOT 11



COOKIECUTTER HANDLOUIS
DAM OF LOT 11



COOKIECUTTER MOGUL HANDY VG-87
2ND DAM OF LOT 11

LOT 11

ENDCO SPARK HAND 349

USA 3135087059

Born: 29-December-2015

Holstein Plaza Contacts:

Steve Mower +1 240-520-5906
Jennifer Dingbaum +1 320-250-2412
Hendrik Albada +1 240-520-1566
Amanda Hauck +1 570-765-0536

USA	Milk	Fat	Prot	SCS	DPR	PL	FLC	UDC	PTAT	DCE	NM	GTPI
12/15	+1120	+68	+40	2.73	+3.2	+6.9	+1.12	+1.96	+2.03	4.8%	+750	+2597

Webb-Vue Spark 2060-ET

72850448 *TV *TL *TY *TD
PTA +2226M +72F +61P 78%R 12/15
PTA +791NM\$ +6.6PL 2.73SCS +0.6DPR
PTA +2.25T +1.59UDC +.97FLC 78%R
GTPI +2622G

Cookiecutter Handlouis-ET

3014260293 Born: March 9, 2014
GTPI+2585 +363M +76F +26P +2.60T
• #1 GTPI St-Louis daughter Worldwide!
• Due May 14, 2016

Seagull-Bay Supersire-ET

69981349 *TV *TL *TY *TD
PTA +2359M +110F +71P 99R 12/15
PTA +1.60T +.68UDC +.55FLC
GTPI +2719G

Webb-Vue Gabor Mycala-ET

69334873 Very Good-87 GMD DOM
2-02 3x 351d 33670 4.8 1602 3.0 1026

Mr Numero Uno St-Louis-ET

3008897845 *TV *TL *TY *TD
PTA -45M +47F +13P 79%R 12/15
PTA +2.21T +2.12UDC +1.26FLC
GTPI +2431G

Cookiecutter Mogul Handy-ET

3014260293 Excellent-90-3YR
2-05 3x 313d 27790 4.5 1254 3.4 938
• One of the highest scored Mogul daughters!
• Supershot son at Accelerated Genetics

3rd thru 11th Dams

Cookiecutter MOM Halo-ET VG-88 DOM
2-00 3x 365d 35280 5.2 1819 3.5 1237

• Dam of the former #1 GTPI sire in the breed

Cookiecutter Shthollerwood EX-91 DOM
2-04 2x 365d 30410 4.8 1462 3.6 1088

Cookiecutter Gld Holler-ET
VG-88 EX-MS DOM
2-03 3x 365d 40730 3.5 1410 3.1 1249

Ms Knags-Rnsm Champ Haley-ET
EX-90 GMD DOM
3-11 2x 365d 43690 3.7 1653 3.1 1357

Regancrest-JDV Hanna-ET EX-90 EEVVE
4-05 2x 365d 45110 4.3 1922 3.2 1449

Long-Haven Rudolph Dee-ET
EX-90 2E GMD DOM
5-04 2x 365d 34650 3.8 1332 3.3 1154

Life: 2306d 166900 4.3 7099 3.5 5884

Regancrest Elton Disrael-ET
VG-88 GMD DOM
2-04 2x 365d 33617 4.5 1499 3.5 1169

Snow-N Denises Dellia EX-95 GMD DOM
7-06 2x 365d 35610 4.0 1431 3.1 1103

Life: 2558d 180240 3.9 7108 3.4 6065

• Gr Ch & Best Udder Spring Nat/WI 1991
• Global Cow of Year 2005

Snow-N Dorys Denise
EX-90 2E GMD DOM
5-09 2x 365d 33350 3.8 1256 2.9 975

Life: 1604d 114010 3.6 4153 3.0 3432



MISS BEAUTY BOMBSHELL EX-92
2ND DAM OF LOT 12



MS ABSOLUTE BLAZE *RC
DAM OF LOT 12



ROLL N VIEW JT BRILLIANT-RED
SELLS AS LOT 12

LOT 12

ROLL N VIEW JT BRILLIANT-RED

USA 3130799863

Born: 19-October-2015

Holstein Plaza Contacts:

Steve Mower +1 240-520-5906
Jennifer Dingbaum +1 320-250-2412
Hendrik Albada +1 240-520-1566
Amanda Hauck +1 570-765-0536

Fradon Jet-Red-ET

7825836C 100%RHA-NA *TL
PTA -372M -47F -17P 99%R 12/15
PTA +0.0PL 3.10SCS +0.0DPR 11.1%DCE
PTA +.28T +.00UDC -.69FLC 99R 12/15
GTPI +1295G

Ms Absolute Blaze-ET *RC

72776361 Born: September 16, 2013
• Fresh & looks like an easy VG!

Full sister to Blaze

Ms Absolute Bliss VG-88-2YR

- HM All-Canadian Milking Yearling 2015
- Nom All-American Milking Yearling 2015
- 1st Milking Yrlg. La Supreme Quebec 2015

Ladino Park Talent-IMP-ET *RC

AUS 930377 100%RHA-NA *RC *TV *TL
PTA -565M -44F -9P 99R 12/15
PTA +1.08T +1.25UDC +.27FLC 99R
GTPI +1368G

Fradon R Mark Jodie-Red

8237577C Excellent-91 2E
Life: 1895d 134999 4.0 5366 3.1 4243

Apples Absolute-Red-ET

139358472 *CV *TL *TY *TD
PTA -1634M +4F -14P 99%R 12/15
PTA +2.85T +2.85UDC +2.25FLC
GTPI +1546G

Miss Beauty Bombshell-ET

69507883 Excellent-92 EEEEE @ 3-06
2-02 2x 305d 17250 4.6 794 3.5 598
3-03 2x 305d 21430 3.2 694 3.5 760
• Nom All-Ontario Spring Calf 2011
• 1st Spring Yrlg. NY Spring Int'l Show 2012

3rd thru 10th Dams

Ms Exels Dundee Beauty EX-95 3E EEEEE

8-09 2x 365d 36180 4.3 1556 3.0 1089
Life: 1887d 141530 4.6 6537 3.3 4663

- Nom All-Canadian Mature Cow 2013
- All-American Aged Cow 2011
- Res All-Canadian Mature Cow 2011
- 1st Mature Cow Royal 2011
- HM All-American 5-Yr-Old 2010
- Sr & Grand Champ Mid-E Nat'l 2010
- Res Grand Champ NY Spring Show 2010
- 1st 6-Yr-Old WDE 2011
- 2nd 4-Yr-Old WDE 2009
- Res Int Champ West Spring Nat'l 2008

Woodfield Integrity Belinda EX-93 2E

5-09 3x 272d 30210 3.9 1187 2.9 867

Woodfield Jed Belinda-ET

GP-81-2YR-CAN

3-03 2x 361d 20055 4.5 908 3.5 692

Woodfield Raider Beulah VG-88

4-00 2x 36d 24595 4.4 1089 3.4 829

Woodfield Warden Betty VG-87 2*

4-03 2x 310d 21475 4.0 849 3.5 747

Dutchglen Haven Bonnie VG-85

4-04 2x 306d 16061 4.1 655

Dutchglen Johanna VG-85

Dutchglen Lady VG-85



MORSAN LADD AFTER FOOLS RED P GP-83-2YR
DAM LOT 13



STONEDEN FOOLS GOLD RED VG-88-3YR 5*
3RD DAM LOT 13

LOT 13

COMFORT RUBICON RUBY RED *PO

Holstein Plaza Contacts:

Steve Mower +1 240-520-5906
Jennifer Dingbaum +1 320-250-2412
Hendrik Albada +1 240-520-1566
Amanda Hauck +1 570-765-0536

CAN 12251360 Born: 31-October-2015 *VRC *PO
#1 Dominant RED Polled female born in 2015!

USA	Milk	Fat	Prot	SCS	DPR	PL	FLC	UDC	PTAT	DCE	NM	GTPI
12/15	+825	+48	+28	2.80	+0.3	+4.6	+1.86	+1.77	+2.21	6.5%	+510	+235

EDG Rubicon-ET

72128125 *TV *TL *TY *TD
PTA +1594M +100F +55P 78%R 12/15
PTA +6.8PL 3.00SCS +0.8DPR
PTA +1.94T +1.43UDC +1.94FLC 78%R
GTPI +2670G

Morsan Ladd After Fools Red P

11556486C Good Plus-83-2YR
2-06 3x Proj. 19742 4.5 886 3.3 655

Mountfield SSI Dcy Mogul

3006972816 *TR *TV *TL *TY *TD
PTA +1439M +90F +43P 99%R 12/15
PTA +2.57T +2.62UDC +2.64FLC
GTPI +2540G

Sandy-Valley Robust Ruby-ET

69998487 Very Good-87
2-04 2x 305d 29450 3.2 950 3.1 916

Tiger-Lily Ladd P-Red-ET

69405976 100%RHA-NA *TV *TL *TY
PTA -1370M -9F -9P 98%R 12/15
PTA +1.98T +1.98UDC +.67FLC
GTPI +1964G

Morsan After Fools Gold Red

11197513C Very Good-85-3YR
2-02 3x 365d 28373 4.0 1142 3.1 884
• Sired by: Mr Atlees Sht Aftershock

3rd thru 7th Dams

Stoneden Fools Gold Red VG-88-3YR 5*
2-04 3x 365d 38949 3.6 1407 3.0 1177
4-03 3x 365d 50748 3.8 1942 2.9 1462
• Already 8 EX & VG daughters in Canada!
• 1st Int. Calf Tri-Couty 2007
Marktwain Lee Diana
VG-85-3YR 2*
3-06 2x 365d 19385 3.8 730 3.0 589
Marktwain Charles Dixie
EX-90-CAN
5-06 2x 365d 23289 4.0 924 3. 710
Life (8 Lacs): 157069 4.1 6385 3.1 4934
Marktwain Yolanda-Red
VG-86-3YR-CAN
10-00 2x 365d 24914 3.7 922 2.8 699
Life (9 Lacs): 190120 3.9 7335 3.1 5853
Marktwain TT Yvonne VG-86-3YR-CAN
2-02 2x 315d 1540 4.2 650 3.2 500



**CALBRETT SUPERSIRE BARB *RC VG-86-2YR VG-MS
DAM LOT 14**

**RAINYRIDGE TALENT BARBARA *RC EX-95
3RD DAM LOT 14**

LOT 14

MS DG-TM SILVER BLIZZARD-ET

USA 3128162346

Born: 18-November-2015

Holstein Plaza Contacts:

Steve Mower +1 240-520-5906
Jennifer Dingbaum +1 320-250-2412
Hendrik Albada +1 240-520-1566
Amanda Hauck +1 570-765-0536

USA	Milk	Fat	Prot	SCS	DPR	PL	FLC	UDC	PTAT	DCE	NM	GTPI
12/15	+1949	+63	+52	2.98	+0.5	+5.6	+1.83	+2.63	+2.82	5.7%	+681	+2564

Seagull-Bay Silver-ET

72254526 *TV *TL *TY *TD
PTA +1715M +102F +57P 78%R 12/15
PTA +4.6PL 2.88SCS -1.00DPR
PTA +2.57T +2.05UDC +2.47FLC 78%R
GTPI +2630G

Calbrett Supersire Barb-ET *RC

CAN 11658906 Very Good-86-2YR VG-MS
GTPI+2556 1640M +71F +54P +2.36T
2-04 2x 137d 12285 4.8 595 3.0 369 RIP
• #1 GTPI Red Carrier Cow in the Breed
• Dam of #1 GTPI Olympian son in the Breed
• Dam of #2 Red Carrier Female in the Breed
• Dam of only *RC bull >+2500G & >3 PTAT
• Sons at Semex, Select, Cogent & St. Jacobs
• Top Seller 2013 Cormdale Sale \$265,0000

Mountfield SSI Dcy Mogul

3006972816 *TR *TV *TL *TY *TD
PTA +1439M +90F +43P 99%R 12/15
PTA +2.57T +2.62UDC +2.64FLC
GTPI +2540G

Seagull-Bay Snow Darling

70640273 Very Good-86 DOM
2-02 2x 365d 35620 3.5 1257 3.0 1077

Seagull-Bay Supersire-ET

69981349 *TV *TL *TY *TD
PTA +2359M +110F +71P 99R 12/15
PTA +1.60T +.68UDC +.55FLC
GTPI +2719G

Rainyridge Super Beth-ET

CAN 11060180 Very Good-86-2YR-CAN
2-03 2x 365d 23739 3.7 877 3.5 822
4-06 2x Proj. 28739 3.9 1116 3.5 1014
• Sons in AI

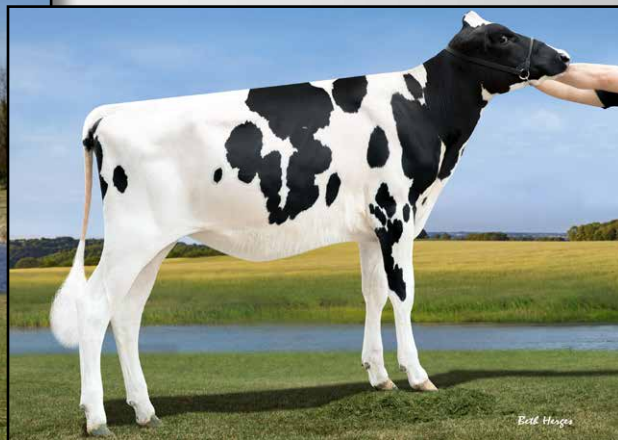
3rd thru 6th Dams

Rainyridge Talent Barbara *RC

EX-95 EEEEE 8*
3-04 2x 365d 34465 3.6 1257 3.3 1133
• HHM All-American Aged Cow 2011
• Unanimous All-American 5-Yr-Old Cow 2010
• Unanimous All-Canadian 5-Yr-Old Cow 2010
• Nom All-American Jr 3-Yr-Old Cow 2008
• Nom All-Canadian Jr 3-Yr-Old Cow 2008
RF Outside Breeze-ET EX-95 EEEEE 2E 2*
8-00 3x 365d 37970 3.9 1484 3.4 1298
Life: 1896d 165379 4.6 7560 3.6 5793
• Gr Champ, Southern Nat'l Spring Show 2011
• 1st 5-Yr-Old, Manitoba Spring 2008
Rayverley Briana Milan-ET EX-CAN 2E 6*
6-03 2x 365d 27075 3.4 928 3.2 862
Rainyridge Tony Beauty EX-CAN 5E 9*
Life: (8 Lacs) 199869 3.3 6592 3.2 6455
• All-Canadian Mature Cow '92, '93, '95, '99
• All-American Aged Cow '92, '95, '99
• Supreme Champion WDE '95, '99
• Res Gr Champion, Royal '95, '99
• All-American People's Choice Winner '99
• HI Cow of the Year 1999
• Grand Champ, Royal Winter Fair 1993
• Nom. All-Canadian Mature Cow 1991
• HM All-Canadian 4-Yr-Old Cow 1989



BENNER FORK JANARDAN-ET VG-87-2YR
2ND DAM LOT 15



MS TRAMILDA DLTA JASMINE-ET
LOT 15

LOT 15

MS TRAMILDA DLTA JASMINE-ET

Holstein Plaza Contacts:

Steve Mower +1 240-520-5906
Jennifer Dingbaum +1 320-250-2412
Hendrik Albada +1 240-520-1566
Amanda Hauck +1 570-765-0536

USA 3128648902

Born: 19-January-2015

Flush History: flushed to Sexed Modesty with 8 #1 embryos

USA	Milk	Fat	Prot	SCS	DPR	PL	FLC	UDC	PTAT	DCE	NM	GTPI
12/15	+1181	+74	+36	2.78	+1.1	+5.4	+1.36	+1.94	+2.00	6.6%	+660	+2477

Mr Mogul Delta 1427

72128216 *TV *TL *TY *TD
PTA +1615M +89F +53P 78R 12/15
PTA +8.1PL 2.83SCS +1.6DPR 5.6%DCE
PTA +2.10T +1.87UDC +1.50FLC 78R 12/15
GTPI +2712G

T-Gen-AC Denzel Janardy-ET

72641519 Very Good-85 VG-MS @ 2-08
GTPI+2346 +918M +75F +38P +1.97T
• #2 GTPI Denzel daughter in the breed!

Mountfield SSI Dcy Mogul

3006972816 *TR *TV *TL *TY *TD
PTA +1439M +90F +43P 99%R 12/15
PTA +2.57T +2.62UDC +2.64FLC
GTPI +2540G

Miss OCD Robst Delicious-ET

3006989479 VG-87 VG-MS DOM
2-05 2x 305d 25780 3.5 908 3.3 841

Ronelee Shottbolt Denzel-ET

69716523 *TY *TL *TY *TD
PTA +1123M +29F +19P 84%R 12/15
PTA +1.86T +1.48UDC +1.38FLC
GTPI +2213G

Benner Fork Janardan-ET

11271465C Very Good-87 VG-MS @ 2-10
2-05 2x 365d 32440 4.2 1377 3.5 1142
• Sold for \$150,000 in Genomic Power Sale

3rd thru 10th Dams

Benner Planet Jakova GP-83-2YR-CAN 2*
4-05 2x 365d 41455 4.6 1892 3.5 1446

• 1 Superior Lactation

Benner Goldwyn Jamarco VG-87-CAN 9*
2-02 2x 365d 35075 4.7 1651 3.5 1226

• 1 Superior Lactation

Benner Outside Joyce VG-85-2YR-CAN 10*
2-08 2x 365d 35547 4.1 1446 3.4 1195

• 1 EX & 9 VG daughters

• Sons at Semex, Generations & Alta

Benner Aeroline Jemima VG-86-CAN 13*
6-01 2x 365d 47800 4.9 2366 3.3 1594

Life: (3 Lacs) 193901 4.5 8662 3.5 6722

• 2 Superior Lactations

Benner Luke Jean VG-86 23*
2-02 2x 365d 41482 3.7 1550 3.4 1391

• 1 EX & 13 VG daughters

• 1 Superior Lactation

Benner Grand Julia VG-87 2*
2-03 2x 365d 29312 4.4 130 3.3 961

Benner Blackstar Janet VG-89 11*
5-04 2x 365d 42760 4.3 1821 3.3 1398

• 3 Superior Lactations

Caroldale Warden Josey VG-88-CAN 8*
9-04 2x 365d 31773 3.9 1241 3.7 1182

• 1 Superior Lactation



STONE-RAIL MOGUL SPARKLE VG-85 VG-MS
DAM OF LOT 16

STONE-RAIL MOGUL SPARKLE VG-85 VG-MS
DAM OF LOT 16

LOT 16

MD-MAPLE-LAWN SPARKLER-ET

840 3127381712

Born: 16-June-2015

Holstein Plaza Contacts:

Steve Mower +1 240-520-5906
Jennifer Dingbaum +1 320-250-2412
Hendrik Albada +1 240-520-1566
Amanda Hauck +1 570-765-0536

USA	Milk	Fat	Prot	SCS	DPR	PL	FLC	UDC	PTAT	DCE	NM	GTPI
12/15	+1427	+60	+34	2.68	+1.2	+7.4	+1.01	+2.58	+2.06	6.5%	+704	+2508

Mr Coin Draco 15006

301574853 *TV *TL *TY *TD
PTA +1522M +64F +51P 78R 12/15
PTA +8.2PL 2.72SCS +1.9DPR 6.0%DCE
PTA +1.92T +1.81UDC -.03FLC 76R 12/15
GTPI +2606G

Stone-Rail Mogul Sparkle-ET

72123317 Very Good-85 VG-MS @ 3-00
GTPI+2403 +1309M +58F +31P +2.03T
• Sons at Accelerated and Cogent

Farnear-TBR-BH Cashcoin-ET

70354884 *TV *TL *TY *TD
PTA +647M +36F +23P 92%R 12/15
PTA +1.31T +1.93UDC -.07FLC
GTPI +2246G

Miss OCD Robst Delicious-ET

3006989479 VG-87 VG-MS DOM
2-05 2x 305d 25780 3.5 908 3.3 841

Mountfield SSI Dcy Mogul-ET

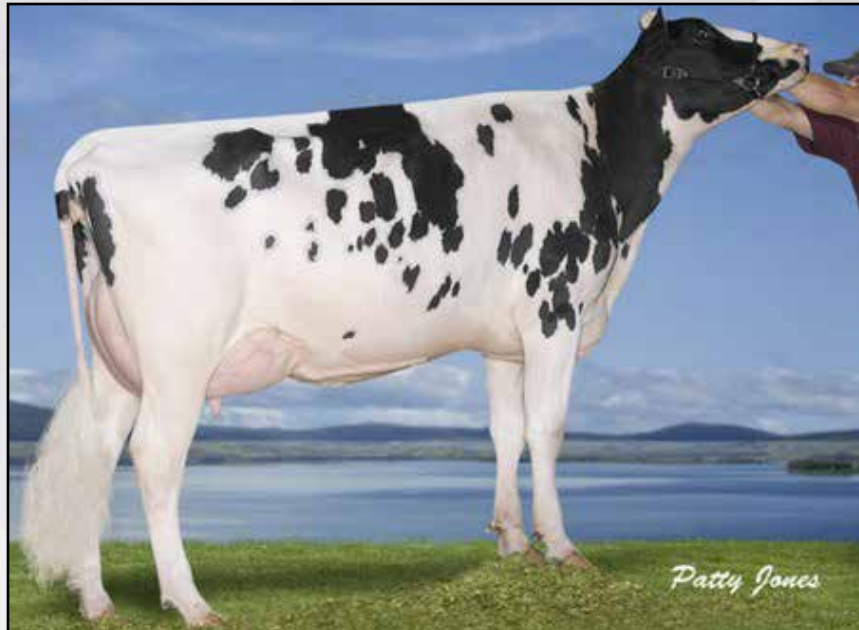
3006972816 *TR *TV *TL *TY *TD
PTA +1439M +90F +43P 99%R 12/15
PTA +2.57T +2.62UDC +2.64FLC
GTPI +2540G

Pine-Tree Planet Suele-ET

66882483 Very Good-85-2YR VG-MS
2-00 3x 365d 27350 3.5 965 3.3 903
• Son at Accelerated

3rd thru 5th Dams

Pine-Tree Bret 1401 VG-88 EX-MS
4-08 3x 305d 34100 3.3 1133 3.0 1034
Pine-Tree Lynch 361 VG-86
4-11 3x 365d 42560 3.2 1366 3.3 1417
Life: 1769 162610 3.4 5573 3.4 5527
Pine-Tree Stardom 873 VG-85
6-00 2x 365d 31910 3.9 1259 3.2 1031



MISTY-SPRINGS SHOTTLE SATIN VG-86
4TH DAM LOT 4

LOT 17

RAGGI RUBICON NATALIE *RC

840 143618634

Born: 13-November-2015

Holstein Plaza Contacts:

Steve Mower +1 240-520-5906
Jennifer Dingbaum +1 320-250-2412
Hendrik Albada +1 240-520-1566
Amanda Hauck +1 570-765-0536

USA	Milk	Fat	Prot	SCS	DPR	PL	FLC	UDC	PTAT	DCE	NM	GTPI
12/15	+1236	+59	+40	2.89	+1.7	+6.8	+1.22	+1.39	+1.54	5.7%	+670	+2436

EDG Rubicon-ET

72128125 *TV *TL *TY *TD
PTA +1594M +100F +55P 78%R 12/15
PTA +6.8PL 3.00SCS +0.8DPR
PTA +1.94T +1.43UDC +1.94FLC 78%R
GTPI +2670G

Pesce Ducati Napoli-ET *RC

3014258894 Good Plus-81 @ 2-1
• Will be re-scored

Mountfield SSI Dcy Mogul

3006972816 *TR *TV *TL *TY *TD
PTA +1439M +90F +43P 99%R 12/15
PTA +2.57T +2.62UDC +2.64FLC
GTPI +2540G

Sandy-Valley Robust Ruby-ET

69998487 Very Good-87
2-04 2x 305d 29450 3.2 950 3.1 916

Woodlawn Ducati-Red-ET

69974458 *TV *TL *TY
PTA +137M -11F +12P 79%R 12/15
PTA 1.02T +1.68UDC +1.43FLC
GTPI +2015G

Lookout-Pesce Nola-ET

3010408611 Good Plus-83
2-06 2x 341d 2667 4.3 1153 3.4 843
• Sired by: Marbri Facebook

3rd thru 13th Dams

Misty Springs MOM Seraphy VG-87-CAN
2-05 2x 317d 21743 5.2 1139 3.9 844

Misty-Springs Shottle Satin VG-86-CAN
1-10 2x 360d 28763 4.5 1292 3.3 948

Willsona Freelance Sizzle VG-86-CAN
2-02 2x 335d 25490 3.9 1003 3.1 789

Gen-I-Beq Convincer Silver VG-88-CAN
3-11 2x 330d 26338 3.7 974 3.0 778

Glen Drummond Splendor
VG-86-2YR-CAN 38*

4-10 2x 314d 26510 4.2 1124 3.2 840

Glen Drummond Aero Flower
VG-88-CAN 18*

2-03 2x 326d 25622 4.0 1032 3.4 882

Glen Drummond Shower EX-CAN 14*

4-10 2x 365d 28583 4.8 1380 3.6 1016

Glen Drummond S C Jo Beth
EX-2E-CAN 7*

Life (6 Lacs): 141637 4.2 5994 3.2 3593

• Grand Champion Brant-Wentworth 1984

Glen Drummond Matt Beth VG-85 4*

11-10 2x 365d 25038 3.7 935

Life (5 Lacs): 105953 4.1 4295

Glen Drummond Marquis Beth VG-CAN

Life (8 Lacs): 112688 4.2 4766

Ferglynn Rag Apple Bertha VG-CAN 3*



SAVAGE-LEIGH GOLD LONA EX-92-3YR
DAM OF 18

SAVAGE-LEIGH LEONA EX-96 EEEEE
SISTER TO DAM OF LOT 18

LOT 18

SAVAGE-LEIGH DOORMAN LIN-ET

840 3123796944

Born: 14-September-2015

Holstein Plaza Contacts:

Steve Mower +1 240-520-5906
Jennifer Dingbaum +1 320-250-2412
Hendrik Albada +1 240-520-1566
Amanda Hauck +1 570-765-0536

Val-Bisson Doorman

CAN 107281711 *TV *TL *TY *TD
PTA -49M +27F +21P 93%R 12/15
PTA +378NM\$ +3.0PL 2.58SCS
PTA +3.26T +2.23UDC +1.96FLC
GTPI +2262G

Savage-Leigh Gold Lona-ET

3004778739 Excellent-92-3YR EEVEE
3-06 2x 365d 34290 3.8 1304 3.1 1065
5-03 2x 365d 38710 4.0 1540 3.3 1263
• Res Senior Champ, Eastern Fall Nat'l 2013
• Int Champion, Eastern Fall Nat'l 2012
• 1st Sr 2-Year-Old, Eastern Fall Nat'l 2011

Maternal sister to Gold Lona

Savage-Leigh Leona-ET EX-96 2E GMD
5-05 2x 365d 42050 4.3 1796 3.2 1343
• Nom All-American 125,000 lb Cow 2015
• Nom All-American 125,000 lb Cow 2014
• Nom All-American 125,000 lb Cow 2013
• Res All-American 125,000 lb Cow 2012
• Res Senior Champ, Eastern Fall Nat'l 2011
• Nom All-American & All-Canadian 2010
• HHM All-American Jr 2-Yr Old 2007

De-Su 521 Bookem-ET

66636657 *TR *TV *TYL *TY *TD
PTA +1347M +29F +50P 99%R 12/15
PTA +1.66T +1.12UDC +1.15FLC
GTPI +2341G

Val-Bisson Shottle Imelda

CAN 106173432 Very Good-89-CAN 4*
4-03 2x 365d 40505 3.8 1550 3.6 1455

Braedale Goldwyn

CAN 10705608 *TV *TL *TY
PTA -371M +13F +1P 99%R 12/15
PTA +1.81T +1.51UDC +1.53FLC
GTPI +1882G

Savage-Leigh Licorice-ET

60317090 Excellent-92 GMD DOM
4-02 2x 365d 51220 4.3 2179 3.3 1693
Life: 1018d 113740 4.4 4968 3.4 3858
• Nominated All-American 2006
• HHM All-American 5-Yr Old Cow 2006
• Nom All-American Produce 2011 & 2012

Maternal sister to Lot 18

Savage-Leigh Alex Lacey VG-87-2YR
• Jr. All-American Winter Yearling 2014
• All-American Winter Yearling 2014
• 1st Winter Yearling WDE 2014

3rd thru 8th Dams

Savage-Leigh Bellwood Linda

EX-92 2E GMD DOM
2-10 2x 365d 40240 5.8 2349 3.4 1358
Life: 1312d 126760 5.2 6576 3.2 4076
• Nom All-American Jr. 3-Year-Old 1999
• Nom Global Cow of the Year 2005

Savage-Leigh Star Linda-ET

VG-87 GMD

2-02 2x 365d 30890 4.0 1236 3.1 952

Savage-Leigh Glenview Linda

EX-90 EVVE GMD DOM

6-08 2x 365d 41820 4.6 1936 3.0 1247

Life: 1892d 150300 4.4 6636 3.2 4813

Savage-Leigh Lindas Chairman

GP-84

5-10 2x 365d 30620 3.8 1167 3.3 1013

Life: 1972d 121550 3.9 4718 3.3 4013

Savage-Leigh Creek Lydia

VG-88

4-11 2x 344d 16390 4.2 685 3.1 511

Savage-Leigh Kate Linda

VG-85

6-01 2x 305d 19940 4.0 793



TERMS AND CONDITIONS

GENERAL:

1. These terms are valid for all agreements made through this sale.
2. The organization of the sale is done by Holstein Plaza, part of and a trade name of AMS Genetics International LLC which will be referred to as the "Auction Company". Auction Company includes its agents, employees, officers, members and directors.
3. The party, which offers animals in this sale will be named after this as the "seller" and the party who buys through this sale and gets the sale item assigned, will be hereinafter identified as the "buyer".
4. The Auction Company is only acting as and will only act as an intermediary of an agreement between seller and buyer.
5. Days means business days and excludes weekends, but does not exclude holidays.

HOW DOES THE SALE WORK:

1. This is a traditional English auction, which starts low and allows bidders to place progressively higher bids.
2. Each lot closes at staggering times at the times designated for the auction on the website or circular applicable to this auction and the highest bidder then wins the lot.
3. All lots sell with reasonable starting bid.
4. When you place a bid, you agree to pay for the item if you're the winning bidder.
5. There are two ways of bidding - either directly through the internet (www.holsteinplaza.com) or by contacting one of the sale staff members listed.
6. All bids are made in U.S. dollars.
7. When you place a bid, you enter the maximum amount you're willing to pay for the lot. The other bidders and the seller will not be able to see your maximum bid. Through this Proxy bidding system, the Holstein Plaza auction system will increase your bid to the next lowest price when another user bids on the same item. The proxy bidding process continues until your maximum bid amount is reached or the auction ends. Every bidder is bound to his bid.
8. The sale is using the popcorn bid system/5-minute rule. Until that moment bids will be accepted.
9. On disputes, which may arise during the sale, the Auction Company decides such disputes. The sale shall be governed by the rules of Maryland Law, excluding its choice of law provisions. Buyer and Seller consent to personal jurisdiction and exclusive jurisdiction in the courts of the State of Maryland located in Washington County, Maryland.
10. The Auction Company will coordinate the paperwork and transfers.

PAYMENT:

1. Full payment for purchase is due to the Auction Company within 10 business days of the sale, no exceptions. The ownership stays with the seller until the complete payment of the invoiced amount has been received.
2. Sale invoices will be sent via e-mail or fax following the conclusion of the sale.
3. All live animals must be picked up or arrangements made with 20 days from the date of sale; this is the responsibility of the buyer. No cattle will be released to buyer until payment has been made. After 20 days, seller is entitled to \$5.00 per day board and a monthly interest fee of 1%.
4. Upon purchase the buyer takes over all risks after 10 days from the sale. The calf must be paid for on or within 10 days after the buyer received the invoice. Regardless of whether buyer makes timely payment, buyer is responsible for all risks after 10 days from the sale and should buy appropriate insurance.
5. The payment should be made as mentioned on the invoice.
6. Claims need to be made in writing to the seller within eight days after delivery to the buyer with a copy to the Auction Company.

EXCLUDING LIABILITY:

1. The Auction Company cannot be held responsible for errors on the internet site, sale catalog or in the advertisements.
2. The Auction Company cannot be held responsible for visual or non-visual representations regardless the size or nature of such defect of the animals sold.
3. The Auction Company does not take and will not have any responsibility for damage to persons or property, which may arise or have arisen because of or connected to the sale.
4. The cow indexes mentioned therein have been calculated or con-

verted by the herdbook in the country the donor cow is housed in accordance with the current methods. All official pedigrees of sale animals can be requested.

5. The Auction Company for the sale can never be held responsible for the bull and embryo contracts supplied with the sale items. The responsibility of the contract is entirely that of the organization supplying the contract, usually the seller.
6. The Auction Company can never be held responsible in case the embryos cannot be exported no matter what reason.
7. Any special terms must be communicated to the Auction Company in a reasonable manner to enable bidders to be notified, so that bidder notifications can occur prior the start of the auction.

TERMS FOR FIRST CHOICES:

1. First choice is the selection of resulting offspring from listed pregnancies mentioned on the catalog page. Terms are as follows: 25% down within 10 days of sale; balance on possession when youngest choice reaches four months of age. Seller will provide 9K genomic testing of all resulting calves prior to selection, at buyer's request. All sales are final including purchase of first choice females; successful bidder/buyer is responsible for first and second payment.
2. Seller to pay all necessary registry and other applicable fees to obtain registry certificate
3. Seller entitled to \$5.00 per day board after 4 months, based on age of youngest calf born in the group from which the selection is made.
4. Should a female chosen from the respective flush fail to meet breeding guarantees, or should for any reason a female not result from a respective flush, the following steps will be taken to fulfill the purchase agreement:
 - i. Seller will offer choice of remaining ETs from the respective flush
 - ii. If, and only if, the above cannot be resolved, a full refund will be made on all payments. Disappointing genomic test results will not be accepted as a reason to cancel the purchase.
5. If a full refund is to be made pursuant to paragraph 4, Auction Company will refund, and only be responsible to refund, any commission received; any claim for the remainder of the purchase price paid by the buyer is solely a direct claim against the seller only. If Auction Company is still holding proceeds from the buyer, and there is any dispute in returning the funds to seller, Auction Company may interplead such funds and deduct any attorney's fees and expenses for the cost of such interpleader action.

WARRANTIES:

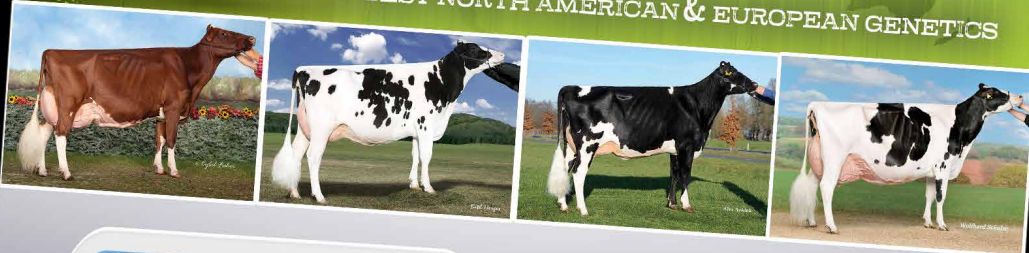
1. Each seller warrants clear title to the animal or lot, and the right to sell same.
2. To the best of the seller's knowledge, each animal is sound and healthy in every respect. Every precaution will be taken to represent the physical condition of each lot exactly as it is known. Heifers that have never calved are in no way guaranteed as to the condition of their udders following calving.
3. Breeding Warranty: The seller guarantees all animals to be breeders, but not beyond the purchase price, with the following understanding:
 4. Females--Any female when sold that has freshened within 90 days prior to the date of the sale is, by that fact, considered a breeder. Should any other female when fresh over 90 days fail to become pregnant within four months of sale date, or if less than eighteen months old when sold, fails to become pregnant by the time she reaches the age of 21 months, after having been bred to a bull known to be a breeder and after having been examined or treated by a licensed veterinarian, the matter shall be reported in writing to the seller within three months of the stated limit. The seller shall then have the privilege of four months' time in which to prove the animal a breeder by service to a registered Holstein bull before refunding the purchase price or making other settlement satisfactory to the buyer.
 5. Females bred when sold and pronounced in calf are presumed to be pregnant but pregnancy is not guaranteed. The seller makes no warranty that pregnant cows or heifers will deliver calves or that they will carry calves full term. If, after the sale embryos or oocytes are recovered from a female or an attempt is made to superovulate her, this negates the breeding warranty unless there is a separate written agreement between buyer and seller.

24/7 SHOPEMBRYO.COM

Now Open!



YOUR SOURCE FOR THE BEST NORTH AMERICAN & EUROPEAN GENETICS



Lorem ipsum dolor sit amet, consectetur adipiscing elit, sed do eiusmod tempor incididunt ut labore et dolore magna aliqua.



Lorem ipsum dolor sit amet, consectetur adipiscing elit, sed do eiusmod tempor incididunt ut labore et dolore magna aliqua.



Lorem ipsum dolor sit amet, consectetur adipiscing elit, sed do eiusmod tempor incididunt ut labore et dolore magna aliqua.



Lorem ipsum dolor sit amet, consectetur adipiscing elit, sed do eiusmod tempor incididunt ut labore et dolore magna aliqua.

NOW OPEN YOUR 24-HOUR EMBRYO WEBSHOP
SHOPEMBRYO.COM



