



Online Resource Guide **SW FLORIDA**

**Hertz**

# Welcome to the **Online Resource Guide**

---

Our interactive guide contains direct links to many internet sites. These sites provide helpful details on communities, demographics, transportation, education, healthcare, shopping and recreation.

At any time you can click on the “Table of Contents” link at the bottom of each page to return and view another section.

Some of the websites included may be “unavailable” during certain times of the day. This is most likely due to periodic updates.

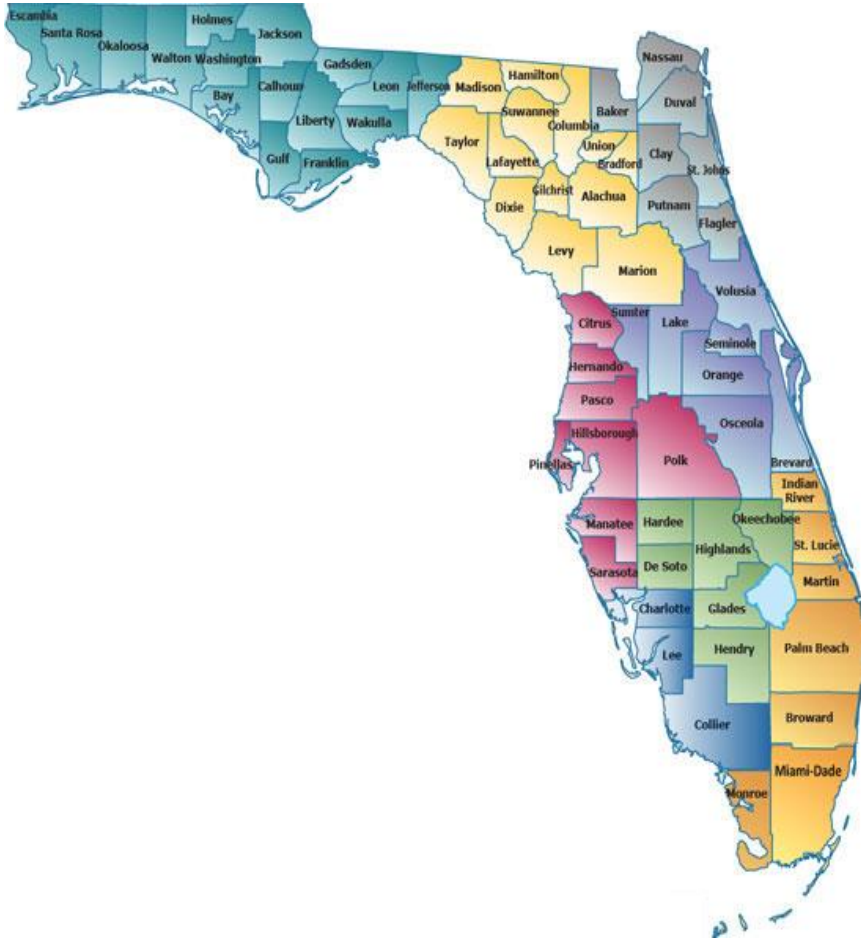
# Table of Contents

- [The State of Florida](#)
- [Ft. Myers](#)
- [Lee County](#)
  - *Highlighted communities:* [Bonita Springs](#), [Cape Coral](#), [Estero](#), [Ft. Myers Beach](#), [Iona](#), [Sanibel](#)
  - [Lee County Municipalities](#)
- [Collier County](#)
  - *Highlighted communities:* [Marco Island](#), [Naples](#), [Pelican Bay](#), [Vineyards](#)
  - [Collier County Municipalities](#)
- [Area Transportation](#)
- [Commuting](#)
- [Employment Resources for Spouse/Partner](#)
- [Major Area Employers](#)
- [Public School Data](#)
- [Private / Independent Schools](#)

- [Colleges & Universities](#)
- [Education Resources](#)
- [Child / Elder Care Resources](#)
- [Healthcare / Major Medical Facilities](#)
- [Climate](#)
- [Arts & Culture](#)
- [Area Attractions](#)
- [Community](#)
- [Sports & Recreation](#)
- [Health & Fitness](#)
- [Shopping / Malls](#)
- [Cost of Living](#)
- [Housing Information](#)
- [Terms of Use](#)



# Florida



- Population: 19,893,297
- 3<sup>rd</sup> Largest U.S. State (by population)
- 67 Counties
- Land Area: 53,927 Square Miles
- State Capitol: Tallahassee

Additional Information *Links:*

[State of Florida](#)

[Florida Census Data](#)

[Florida Chamber of Commerce](#)

[Florida Department of Taxation](#)

[Florida Department of Education](#)

[Drivers License & Vehicle Registration](#)

[Southwest Florida Travel Guide](#)

[Florida Voter Information](#)

[Florida Tourism](#)

# Fort Myers

Fort Myers is the county seat of Lee County, located on the Caloosahatchee Intracoastal Waterway. Known as the City of Palms, Fort Myers has been recognized for its good schools, excellent healthcare, affordable housing which, along with the ideal climate, are all factors that have attributed to the recent growth of the area.

Population: 68,190

Median Household Income: \$35,348

Median Home Value: \$164,000

Ft. Myers Public Schools: 50 public schools, serving 30,920 students

Additional Information *Links:*

[Fort Myers Homepage](#)

[Census Information](#)

[Fort Myers Regional Partnership](#)

[Greater Fort Myers Chamber of Commerce](#)

[Discover Fort Myers and Sanibel](#)

[Public Library](#)



# Lee County

Lee County has been recognized as one of the "Best Places to Live" by Money Magazine. There are over 50 miles of beaches, diverse housing options and the area's reasonable cost of living combine to make the county an idyllic place to live, work, and play.

- Population: 653,485
- Median Household Income: \$47,439
- Median Home Value: \$188,599
- Lee County Public Schools: 118 public schools, serving 81,967 students

Additional Information *Links:*

[Lee County Homepage](#)

[Census Information](#)

[Lee County Chamber of Commerce](#)

[Lee County Public Schools](#)

[Public Library System](#)

[Lee County Profile](#)





# Lee County Community Profiles



## **BONITA SPRINGS**

Approx. 7 mile drive to where Hertz Headquarters will be located

[Bonita Springs Website](#)

[Census Information](#)

[Bonita Springs Chamber of Commerce](#)

[Bonita Springs Public Schools](#)

[Bonita Springs Library](#)

## **CAPE CORAL**

Approx. 20 mile drive to where Hertz Headquarters will be located

[Cape Coral Website](#)

[Census Information](#)

[Cape Coral Chamber of Commerce](#)

[Cape Coral Public Schools](#)

[Cape Coral Library](#)

# Lee County Community Profiles



## ESTERO

*The Hertz Headquarters will be located in Estero*

[Estero Website](#)

[Census Information](#)

[Estero Chamber of Commerce](#)

[Estero Public High School](#)

[Pinewoods Elementary School](#)

[South County Regional Library](#)

## FORT MYERS BEACH

Approx. 29 mile drive to where Hertz Headquarters will be located

[Fort Myers Beach Website](#)

[Census Information](#)

[Greater Fort Myers Chamber of Commerce](#)

[Fort Myers Public Schools](#)

[Fort Myers Beach Public Library](#)



# Lee County Community Profiles



## IONA

Approx. 15 mile drive to where Hertz Headquarters will be located

[Iona City Guide](#)

[Census Information](#)

[Public & Private Schools near Iona](#)

[Public Library - Sanibel Public Library](#)



## SANIBEL

Approx. 24 mile drive to where Hertz Headquarters will be located

[Sanibel Website](#)

[Census Information](#)

[Sanibel Captiva Chamber of Commerce](#)

[Sanibel Public School](#)

[Sanibel Public Library](#)

# Lee County Municipalities & Communities

Additional Information *Links:*

[Alva](#)

[Bokeelia](#)

[\*\*Bonita Springs \\*\*\*](#)

[Buckingham](#)

[Burnt Store Marina](#)

[\*\*Cape Coral \\*\*\*](#)

[Captiva](#)

[Charleston Park](#)

[Cypress Lake](#)

[\*\*Estero\*\*](#)

[\*\*Fort Myers \\*\*\*](#)

[\*\*Fort Myers Beach \\*\*\*](#)

[Fort Myers Shores](#)

[Gateway](#)

[Harlem Heights](#)

[Iona](#)

[Lehigh Acres](#)

[Lochmoor Waterway Estates](#)

[Matlacha](#)

[Matlacha Isles](#)

[Matlacha Shores](#)

[McGregor](#)

[North Fort Myers](#)

[Olga](#)

[Page Park](#)

[Palmona Park](#)

[Pine Island Center](#)

[Pine Manor](#)

[Pineland](#)

[Punta Rassa](#)

[Saint James City](#)

[San Carlos Park](#)

[\*\*Sanibel \\*\*\*](#)

[Suncoast Estates](#)

[Three Oaks](#)

[Tice](#)

[Villas](#)

[Whiskey Creek](#)



# Collier County

Collier County is the largest county in Florida. Collier offers a wide variety of housing options, excellent schools, state of the art health care and an exceptional quality of life... which has made it one of the fastest developing areas in the US.

Population: 348,777

Median Household Income: \$58,106

Median Home Value: \$317,200

Collier County Public Schools: 68 public schools, serving 42,919 students

Additional Information *Links:*

[Collier County Website](#)

[Census Information](#)

[Everglades Area Chamber of Commerce](#)

[The Greater Naples Chamber of Commerce](#)

[Collier County Public Schools](#)

[Paradise Coast Convention and Visitor's Bureau](#)

[Collier County Library Locations](#)

[County Profile](#)



# Collier County Community Profiles



## MARCO ISLAND CITY

Approx. 39 mile drive to where Hertz Headquarters will be located

[Marco Island Website](#)

[Census Information](#)

[Marco Island Area Chamber of Commerce](#)

[Collier County Public Schools](#)

[Marco Island Schools](#)



## NAPLES

Approx. 19.5 mile drive to where Hertz Headquarters will be located

[Naples Website](#)

[Census Information](#)

[The Greater Naples Chamber of Commerce](#)

[Collier County Public Schools](#)

[Naples Schools](#)



# Collier County Community Profiles



## PELICAN BAY

Approx. 13.5 mile drive to where Hertz Headquarters will be located

[Pelican Bay Website](#)

[Pelican Bay City Data](#)

[Collier County Public Schools](#)



## VINEYARDS

Approx. 21 mile drive to where Hertz Headquarters will be located

[Vineyards Website](#) (Naples community)

[Vineyards City Data](#)

[Collier County Public Schools](#)

[Vineyards Schools](#)



# Collier County Municipalities & Communities

Additional Information *Links:*

## Unincorporated Communities

[Ave Maria](#)

[Chokoloskee](#)

[East Naples](#)

[Golden Gate](#)

[Goodland](#)

[Immokalee](#)

[Lely Resort](#)

[Lely](#)

[Naples Manor](#)

[Naples Park](#)

[Ochopee](#)

[Orangetree](#)

[Pelican Bay](#)

[Pine Ridge](#)

[Plantation Island](#)

[Vineyards](#)

## Incorporated Municipalities

[Everglades City](#)

[Marco Island](#)

[Naples](#)





# Area Transportation

Quick *Links*:

[Southwest Florida International Airport](#) (RSW / KRSW)

[Charlotte County Airport](#) (PGD / KPGD)

[Naples Municipal Airport](#) (APF / KAPF)

[Florida Department of Transportation](#)

[Florida Commuter Services](#)

[Florida Traffic Information](#)

[Collier Area Transit – CAT](#)

[Lee Tran Bus Services](#)

[Greyhound](#)

[Amtrak](#)



# Commuting



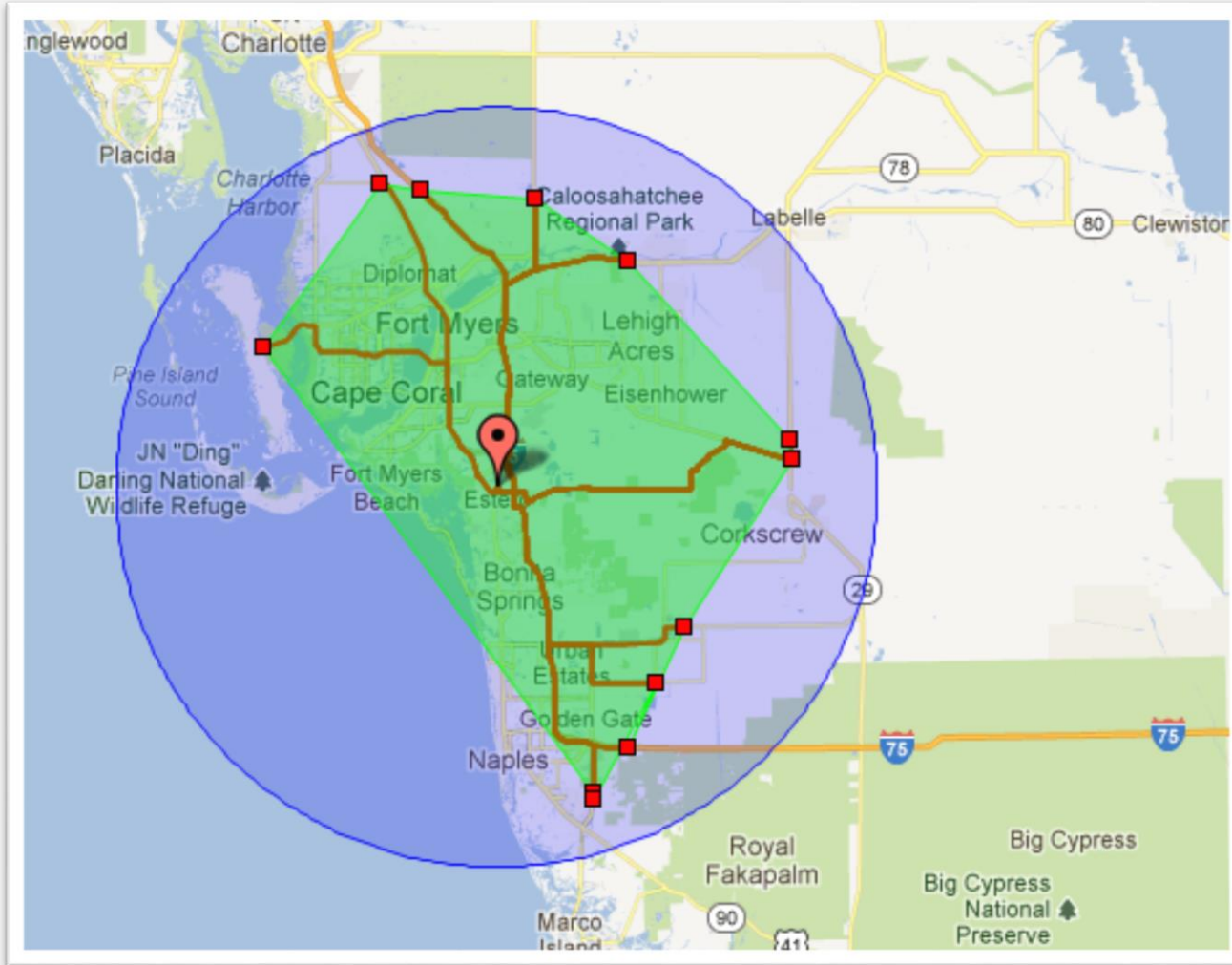
30 miles

20 miles

15 miles



# Commuting



The **blue** circle illustrates a 30 mile radius from Estero

The **green** area indicates points that are within a 30 mile drive from Estero

# Employment Resources for Spouse/Partner

Quick *Links*:

[Florida – People First](#)

[Florida Employment Guide](#)

[Florida Job Search Resources](#)

[Florida Department of Education](#)

[Florida Healthcare Opportunities](#)

[Florida Job Fairs & Career Events](#)

[Florida Nurse Practitioner Network](#)

[Florida Teacher Education and Licensure](#)

[Jobbing.com](#)

[Florida Jobs.com](#)

[Top USA Jobs.com](#)

[Career Builder.com](#)

[South Florida Jobs.net](#)





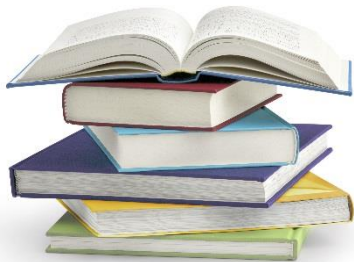
# Major Area Employers Partial Listing

Company	Number of Employees & Industry
<a href="#"><u>Lee Memorial Health System</u></a>	9,500 - Non-profit hospital/healthcare system
<a href="#"><u>Lee County School District</u></a>	9,270 - Public schools
<a href="#"><u>Publix Supermarkets</u></a>	4,215 - Grocery Store
<a href="#"><u>Wal-Mart</u></a>	3,618 - General merchandise, retail
<a href="#"><u>Collier County Public Schools</u></a>	3,350 - Public schools
<a href="#"><u>NCH Healthcare System</u></a>	2,080 - Health Care
<a href="#"><u>US Sugar Corp</u></a>	1,800 – Sugar, Citrus
<a href="#"><u>Employee Professionals</u></a>	1,700 - Staffing / Human Resources
<a href="#"><u>Ritz-Carlton Hotel</u></a>	1,150 – Hospitality
<a href="#"><u>Gartner</u></a>	6,600- IT Firm

Company	Number of Employees & Industry
<a href="#"><u>Chico's</u></a>	1,120 – HQ, women's apparel
<a href="#"><u>Target</u></a>	1,100- General merchandise, retail
<a href="#"><u>Peace River Regional Medical Center</u></a>	1,067 - Healthcare
<a href="#"><u>Charlotte Regional Medical Center</u></a>	984 - Healthcare
<a href="#"><u>Marriott</u></a>	943 - Hospitality
<a href="#"><u>Winn-Dixie Supermarkets</u></a>	918 - Grocery Store
<a href="#"><u>Hope HealthCare Services</u></a>	880 - Healthcare
<a href="#"><u>Fawcett Memorial Hospital</u></a>	865 - Healthcare
<a href="#"><u>Comcast</u></a>	705 – Telecommunication
<a href="#"><u>Arthrex</u></a>	3,400 - Medical Device Company

# Public School Data Partial Listing

Districts	<a href="#">Lee County</a>	<a href="#">Collier County</a>
Number of Schools	118	68
Number of Students	81,967	42,919
Number of Classroom Teachers	4,967	2,777
Student/Teacher Ratio	16.50:1	15.45:1

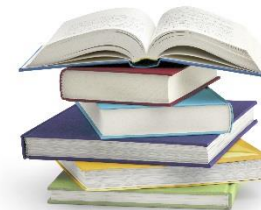


Additional Information *LINKS*:  
[National Center for Educational Statistics](#)  
[Florida Department of Education](#)

\* Data is as of 2013, for up to date information, please visit relevant websites.

# Public Schools

## Partial Listing – Neighborhood High Schools

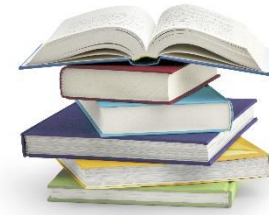


PUBLIC HIGH SCHOOL	City	Enrollment	Graduation Rate	Student Teacher Ratio	SAT Composite Score
<b>LEE COUNTY</b>					
<a href="#"><u>Fort Myers High School</u></a>	Fort Myers	1,837	94.53%	20.4:1	1603
<a href="#"><u>South Fort Myers High School</u></a>	Fort Myers	1,802	80.99%	21.1:1	1353
<a href="#"><u>Cypress Lake High School</u></a>	Fort Myers	1,536	82.15%	22.1:1	1482
<a href="#"><u>Riverdale High School</u></a>	Fort Myers	1,825	86.81%	20.0:1	1485
<a href="#"><u>Dunbar High School</u></a> (Magnet School)	Fort Myers	960	75.14%	14.9:1	1284
<a href="#"><u>East Lee County High School</u></a>	Lehigh Acres	1,698	72.63%	20.1:1	1250
<a href="#"><u>Lehigh Senior High School</u></a>	Lehigh Acres	1,645	81.56%	18.5:1	1401
<a href="#"><u>Estero High School</u></a>	Estero	1,549	85.34%	21.6:1	1446
<a href="#"><u>Mariner High School</u></a>	Cape Coral	1,453	88.74%	18.3:1	1405
<a href="#"><u>Cape Coral High School</u></a> (Magnet School)	Cape Coral	1,519	84.15%	19.6:1	1477
<a href="#"><u>Ida S. Baker High School</u></a>	Cape Coral	1,740	91.22%	20.5:1	1407

\* Data is as of 2013, for up to date information, please visit relevant websites.

# Public Schools

## Partial Listing – Neighborhood High Schools



PUBLIC HIGH SCHOOL	City	Enrollment	Graduation Rate	Student Teacher Ratio	SAT Composite Score
<b>COLLIER COUNTY</b>					
<a href="#"><u>Barron Collier High School</u></a>	Naples	1,805	91.34%	20.6:1	1552
<a href="#"><u>Naples High School</u></a>	Naples	1,596	88.58%	19.7:1	1522
<a href="#"><u>Lely High School</u></a>	Naples	1,483	83.62%	19.5:1	1424
<a href="#"><u>Gulf Coast High School</u></a>	Naples	1,942	94.21%	21.5:1	1512
<a href="#"><u>Palmetto Ridge High School</u></a>	Naples	1,883	84.13%	19.4:1	1435
<a href="#"><u>Immokalee High School</u></a>	Immokalee	1,381	79.76%	18.0:1	1185
<a href="#"><u>Golden Gate High School</u></a>	Naples	1452	72.89%	18.0:1	1305

### Additional Information *LINKS*:

For data specific to individual schools or school districts :

<http://www.GreatSchools.org/>, [National Center for Education Statistics](#) or [SchoolDigger.com](#)

Publications: [US News Education Report](#)

\* Data is as of 2013, for up to date information, please visit relevant websites.

# Public Schools

## Partial Listing – Middle Schools



MIDDLE SCHOOL	City	Grades	Enrollment	Student Teacher Ratio	FL Comprehensive Test FCAT (reading / math / science)
<b>LEE COUNTY</b>					
<a href="#"><u>Cypress Lake Middle School</u></a>	Fort Myers	6-8	726	17.6:1	318 / 322 / 305
<a href="#"><u>Fort Myers Middle Academy</u></a>	Fort Myers	6-8	615	16.3:1	296 / 306 / 283
<a href="#"><u>Paul Laurence Dunbar Middle School</u></a>	Fort Myers	6-8	810	16.5:1	320 / 332 / 313
<a href="#"><u>Three Oaks Middle School</u></a>	Fort Myers	6-8	825	19.7:1	306 / 316 / 302
<a href="#"><u>Bonita Springs Middle School</u></a>	Bonita Springs	6-8	634	15.9:1	294 / 298 / 285
<a href="#"><u>Caloosa Middle School</u></a>	Cape Coral	6-8	900	18.0:1	319 / 323 / 298
<a href="#"><u>Diplomat Middle School</u></a>	Cape Coral	6-8	841	17.2:1	312 / 315 / 296
<a href="#"><u>Gulf Middle School</u></a>	Cape Coral	6-8	820	20.2:1	324 / 328 / 319
<a href="#"><u>Trafalgar Middle School</u></a>	Cape Coral	6-8	843	16.5:1	315 / 315 / 301

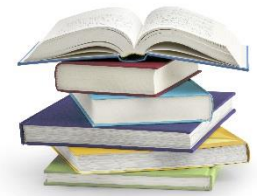
FCAT Middle School State Average: 307 / 296 / 254

\* Data is as of 2013, for up to date information, please visit relevant websites.



# Public Schools

## Partial Listing – Middle Schools



MMIDDLE SCHOOL	City	Grades	Enrollment	Student Teacher Ratio	FL Comprehensive Test FCAT (reading / math / science)
<b>COLLIER COUNTY</b>					
<a href="#"><u>Corkscrew Middle School</u></a>	Naples	6-8	738	18.0:1	310 / 314 / 298
<a href="#"><u>East Naples Middle School</u></a>	Naples	6-8	1052	18.0:1	306 / 316 / 285
<a href="#"><u>Golden Gate Middle School</u></a>	Naples	6-8	911	16.9:1	285 / 296 / 254
<a href="#"><u>Gulfview Middle School</u></a>	Naples	6-8	657	17.5:1	324 / 331 / 306
<a href="#"><u>Manatee Middle School</u></a>	Naples	4-8	716	17.9:1	272 / 283 / 242
<a href="#"><u>Oakridge Middle School</u></a>	Naples	6-8	1071	17.6:1	322 / 330 / 319
<a href="#"><u>Pine Ridge Middle School</u></a>	Naples	6-8	1002	18.2:1	323 / 335 / 312
<a href="#"><u>Marco Island Charter Middle School</u></a>	Marco Island	6-8	359	14.9:1	321 / 333 / 312

**Additional Information LINKS:**

For data specific to individual schools or school districts : <http://www.GreatSchools.org/> , [National Center for Education Statistics](#) or [SchoolDigger.com](#)

\* Data is as of 2013, for up to date information, please visit relevant websites.

# Public Schools

## Partial Listing – Elementary Schools



ELEMENTARY SCHOOL	City	Grades	Enrollment	Student Teacher Ratio	FL Comprehensive Test FCAT (reading / math / science)
<b>LEE COUNTY</b>					
<a href="#"><u>Allen Park Elementary</u></a>	Fort Myers	PK-5	928	15.1:1	337 / 353 / 315
<a href="#"><u>BayShore Elementary</u></a>	Fort Myers	PK-5	587	16.3:1	314 / 282 / 300
<a href="#"><u>Colonial Elementary</u></a>	Fort Myers	PK-5	763	14.4:1	304 / 317 / 278
<a href="#"><u>Gateway Elementary</u></a>	Fort Myers	KG-5	678	15.2:1	307 / 317 / 299
<a href="#"><u>Franklin Park Magnet School</u></a>	Fort Myers	PK-5	484	15.6:1	293 / 301 / 302
<a href="#"><u>Fort Myers Beach Elementary</u></a>	Fort Myers Beach	KG-5	121	12.9:1	337 / 341 / 322
<a href="#"><u>Alva Elementary</u></a>	Alva	PK-5	380	15.0:1	313 / 315 / 288
<a href="#"><u>Bonita Springs Elementary</u></a>	Bonita Springs	PK-5	437	12.6:1	300 / 316 / 297
<a href="#"><u>Caloosa Elementary</u></a>	Cape Coral	PK-5	924	15.3:1	331 / 344 / 316
<a href="#"><u>Cape Elementary</u></a>	Cape Coral	PK-5	727	14.2:1	324 / 334 / 318
<a href="#"><u>Diplomat Elementary</u></a>	Cape Coral	PK-5	894	15.7:1	327 / 343 / 310
<a href="#"><u>Gulf Elementary</u></a>	Cape Coral	KG-5	1,155	15.6:1	326 / 341 / 313

FCAT Elementary School State Average: 307 / 316 / 295

\* Data is as of 2013, for up to date information, please visit relevant websites.

# Public Schools

## Partial Listing – Elementary Schools



ELEMENTARY SCHOOL	City	Grades	Enrollment	Student Teacher Ratio	FL Comprehensive Test FCAT (reading / math / science)
<b>COLLIER COUNTY</b>					
<a href="#">Avalon Elementary</a>	Naples	PK-5	521	14.30:1	287 / 304 / 275
<a href="#">Big Cypress Elementary</a>	Naples	KG-5	920	14.38:1	318 / 332 / 316
<a href="#">Golden Gate Elementary</a>	Naples	PK-5	824	14.22:1	287 / 292 / 261
<a href="#">Lake Park Elementary</a>	Naples	KG-5	548	12.22:1	331 / 343 / 325
<a href="#">Laurel Oak Elementary</a>	Naples	KG-5	857	15.04:1	325 / 345 / 320
<a href="#">Lely Elementary</a>	Naples	PK-5	667	13.9:1	296 / 303 / 293
<a href="#">Manatee Elementary</a>	Naples	PK-5	622	13.25:1	282 / 291 / 265
<a href="#">Pelican Marsh Elementary</a>	Naples	PK-5	752	13.93:1	347 / 368 / 347
<a href="#">Tommie Barfield Elementary</a>	Marco Island	PK-5	650	13.68:1	330 / 346 / 320

Additional Information *LINKS*:

For data specific to individual schools or school districts : <http://www.GreatSchools.org/> , [National Center for Education Statistics](#) or [SchoolDigger.com](#)

\* Data is as of 2013, for up to date information, please visit relevant websites.

# Private / Independent Schools

## Partial Listing



Private Schools	Religious Affiliation	City	Grades	Enrollment	Pupil-Teacher Ratio
<a href="#">Bishop Verot Catholic High School</a>	Catholic	Fort Myers	9-12	706	17.2:1
<a href="#">Canterbury School</a>	Nonsectarian	Fort Myers	PK-12	632	8:1
<a href="#">Evangelical Christian School</a>	Christian	Fort. Myers	PK-12	1,002	15.4:1
<a href="#">Southwest Florida Christian Academy</a>	Baptist	Fort Myers	KG-12	539	14.9:1
<a href="#">St Francis Xavier School</a>	Catholic	Fort Myers	PK-8	575	19.4:1
<a href="#">Noonan Elementary Academy</a>	Christian	Fort Myers	PK-8	112	9.3:1
<a href="#">Christ Lutheran School</a>	Lutheran	Cape Coral	PK-5	113	6.4:1
<a href="#">Providence Christian School</a>	Presbyterian	Cape Coral	PK-8	111	9.5:1
<a href="#">Rhodora J Donahue Academy</a>	Catholic	Ave Maria	KG-12	196	13.7:1
<a href="#">First Baptist Academy</a>	Baptist	Naples	PK-12	515	11.5:1
<a href="#">Naples Christian Academy</a>	Christian	Naples	PK-8	188	10.3:1
<a href="#">Seacrest Country Day School</a>	Nonsectarian	Naples	PK-12	589	9.6:1
<a href="#">St Ann School</a>	Catholic	Naples	PK-8	326	11.4:1
<a href="#">The Community School of Naples</a>	Nonsectarian	Naples	PK-12	745	8.6:1
<a href="#">The Village School</a>	Methodist	Naples	PK-8	529	12.1:1

Additional Information *LINKS:* [Private School Review](#) [National Center for Education Statistics](#)

\* Data is as of 2013, for up to date information, please visit relevant websites.

# Colleges & Universities

## Partial Listing



COLLEGE or UNIVERSITY	PROGRAM
<a href="#"><u>Edison State College</u></a>	Offers two-year associate's degrees and four-year bachelor's degrees. The main campus is in Fort Myers, branch locations in Charlotte and Collier Counties.
<a href="#"><u>Florida Gulf Coast University</u></a>	A public research university , part of the12-campus State University System of Florida. Offers associate's, bachelor's, master's and doctoral degrees. Locations in Naples, Cape Coral, Punta Gorda
<a href="#"><u>Hodges University</u></a>	Formerly International College - private university located in Naples and Fort Myers offering 12 associate, 12 bachelor's, and 8 master's degree programs
<a href="#"><u>Keiser University</u></a>	Located in Fort Myers, offers associate's, bachelor's and master's degree programs. The main campus is in Fort Lauderdale, additional campuses in Daytona Beach, Jacksonville, Lakeland, Melbourne, Miami, Orlando, Pembroke Pines, Port St. Lucie, Sarasota, Tallahassee, Tampa, and West Palm Beach.
<a href="#"><u>Rasmussen College</u></a>	Private college with 24 campuses located in Fort Myers, Florida, Minnesota, North Dakota, Wisconsin, Illinois, Kansas . Offers over 80 programs in Health Sciences, Business, Justice Studies, Education, Nursing, and Technology and Design.
<a href="#"><u>Wolford College</u></a>	Naples - Offers a 28 month curriculum leading to a Master's Degree in Nurse Anesthesia with a full scope of nurse anesthesia practice.
<a href="#"><u>Southwest Florida College</u></a>	4 yr. private institution with campuses in Fort Myers, Tampa, Port Charlotte and Online. Offers associate's, bachelor's, master's degree programs
<a href="#"><u>Argosy University</u></a>	4 yr. private institution located in Sarasota (and Tampa), offering bachelor degrees, masters degrees, certificates/post-master's certificates, doctor's degrees

Additional Information LINK: [State of Florida Colleges and Universities](#)

\* Data is as of 2013, for up to date information, please visit relevant websites.

# Education Resources

[Florida Autism Center](#)

[Florida Education Directory](#)

[Florida Education Association](#)

[Florida Colleges & Universities](#)

[Florida Department of Education](#)

[Florida Charter Schools by District](#)

[Florida Home Schooling Information](#)

[Florida Student Scholarship & Grant Programs](#)

[Florida Education Resources – College Planning](#)

[National Association of Private, Catholic & Independent Schools](#)





# Child / Elder Care Resources

## Child Care

[Florida Licensed Child Care Providers](#)

[Child Care Resource & Referral Network](#)

[Department of Children and Family Services](#)

[Florida Developmental Disabilities Resources](#)

[Florida Child Care Resource & Referral Network](#)

[Florida Children's Medical Services – Special Needs](#)

## Elder Care

[Area Agency on Aging – Florida Resources](#)

[AARP – American Assn of Retired Persons](#)

[Florida Department of Elder Affairs](#)

[Florida Elder Resource.com](#)

[Parent Your Parents](#)



# Healthcare / Major Medical Facilities

## Partial Listing

FACILITY	LOCATION	SPECIALTY
<a href="#"><u>Bonita Community Health Center</u></a>	Bonita Springs	Medical and surgical facility, Partnership with Lee Memorial Healthcare Systems and NCH Healthcare
<a href="#"><u>Cape Coral Hospital</u></a>	Cape Coral	A 291 bed facility, short-term, acute care facility
<a href="#"><u>Gulf Coast Hospital</u></a>	Fort Myers	349 bed, Acute care facility
<a href="#"><u>HealthPark Care and Rehabilitation Center</u></a>	Fort Myers	112 beds nursing home with rehabilitative and sub-acute services
<a href="#"><u>HealthPark Medical Center</u></a>	Fort Myers	368 bed, acute care facility
<a href="#"><u>Lee Memorial Hospital</u></a>	Fort Myers	355 bed, acute care facility and a Level II Trauma Center
<a href="#"><u>The Rehabilitation Hospital</u></a>	Fort Myers	60 bed comprehensive inpatient rehabilitation facility
<a href="#"><u>Riverwalk Professional Center</u></a>	Fort Myers	A combination lab and outpatient rehabilitation facility
<a href="#"><u>St. Cloud Hospital</u></a>	Fort Myers	Acute care hospitals
<a href="#"><u>Hendry Regional Medical Center</u></a>	Clewiston	25 bed critical access hospital with 24-hour physician coverage
<a href="#"><u>Charlotte Regional Medical Center</u></a>	Punta Gorda	208 bed, short-term acute care, primary stroke center
<a href="#"><u>Englewood Community Hospital</u></a>	Englewood	100 bed, short-term acute care
<a href="#"><u>Fawcett Memorial Hospital</u></a>	Port Charlotte	238 bed, acute care facility
<a href="#"><u>Peace River Regional Medical Center</u></a>	Port Charlotte	Charlotte Regional 208 bed facility, Peace River Regional Medical Center has 254 beds
<a href="#"><u>NCH Healthcare System</u></a>	Naples	Total of 681 beds, a not-for-profit, multi-facility healthcare system
<a href="#"><u>Physicians Regional Medical Center</u></a>	Naples	Collier Boulevard 100 bed acute care facility, Pine Ridge campus is a 101-bed acute care facility

# Climate and Demographics

The weather is one of the areas greatest assets. Fort Myers has a sub-tropical climate with an average year-round temperature of 74°. This wonderful weather allows residents plenty of time to enjoy outdoor activities, the beaches and lush tropical landscape.

There are typically more than 266 days of sunshine each year and an annual rainfall of 52 inches. The rainy season is usually from June to September.



Average Temperatures		
Season	High Temperature	Low Temperature
Winter (Jan-Mar)	74-80°	53-58°
Spring (Apr-Jun)	85-91°	62-73°
Summer (Jul-Sep)	91-90°	75-74°
Fall (Oct-Dec)	76-86°	69-51°

Source: citydata.com

# Arts & Culture Partial Listing

## Cultural Park Theatre

Cape Coral

## Gulf Coast Symphony

Fort Myers

## Von Liebig Art Center

Naples

## Florida Repertory Theatre

Fort Myers

## BIG Arts Center – Sanibel

Theater, Art, Ballet, Opera

## Southwest Florida Symphony

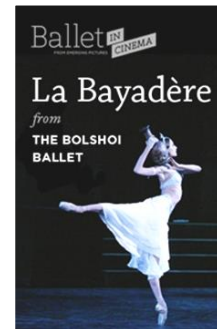
Fort Myers

## Lee County Alliance for the Arts

Fort Myers

## The Sidney & Berne Davis Art Center

Fort Myers





# Area Attractions Partial Listing



[Naples Zoo](#)

[Germain Arena](#)

[Fishermen's Village](#)

[Everglades National Park](#)

[Edison & Ford Winter Estates](#)

[Bailey-Matthews Shell Museum](#)

[Golisano Children's' Museum of Naples](#)

[Butterfly Estates](#)

[Sun Splash Family Water Park](#)

[Babcock Wilderness Adventures](#)

[Boston Red Sox - Spring Training](#)

[Minnesota Twins - Spring Training](#)

[Naples/Fort Myers Greyhound Track](#)

[Imaginarium Hands-on Museum & Aquarium](#)

# Area Attractions Partial Listing



[SWFL Visitor Guide](#)

[365 things to do in SWFL](#)

[Southwest Florida Directory](#)

[Naples, Marco Island Everglades Florida's](#)

[Paradise Coast](#)

[US Family Guide](#)

[See & Do – the beaches of Ft Myers & Sanibel](#)

[SWFL Travel Guide](#)





## Local News and Events:

<http://www.news-press.com/>  
<http://www.news-press.com/life/>  
<http://www.naplesnews.com/>  
<http://www.leefamilynews.net/>

## Community Involvement

[Junior League](#)  
[Elks Club](#)  
[Lions Club](#)  
[American Legion](#)

Learn more about your neighborhood from a social network perspective: <https://nextdoor.com/>

**Hertz in the Neighborhood (HITN)** - Some of the activities we participate in are locale Happy hours and Community Volunteering such as [Habitat for Humanity](#) building events.

# Sports & Recreation



## Beaches

[Southwest Florida Beach Information](#)  
[Florida Beaches](#)

## Biking

[Biking Florida & Lee County Trails](#)

## Boating

[Southwest Florida Boaters Guide](#)

## Camping

[Campgrounds & RV Parks](#)

## Fishing

[Florida Fishing Guide](#)  
[Southwest Florida Fishing & Licensing](#)

## Golf

[Florida Course Directory](#)  
[Lee County Golf Courses](#)  
[Collier County Golf Courses](#)

## Hiking Trails

[Area Trail Information](#)

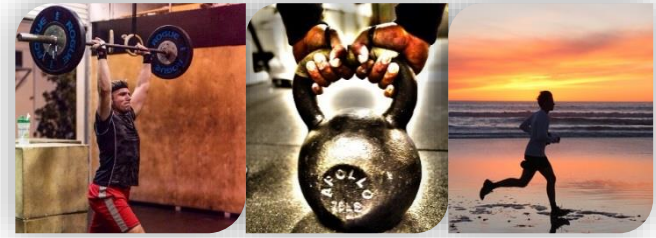
## Horseback Riding

[Florida Equestrian Information](#)

## State Parks

[Lee County Parks & Recreation](#)  
[Florida State Parks](#)

# Health & Fitness Centers



## LA Fitness

- Fort Myers, Bonita Springs, & North Naples



## Around The Clock Fitness

- Cape Coral & Fort Myers



## Anytime Fitness

- Cape Coral, Fort Myers, Estero, Naples



## Planet Fitness

- Cape Coral, Fort Myers, Naples

[CrossFit Estero](#) (Estero/South Fort Myers)

[CrossFit Lawless](#) (Estero)

[CrossFit Fireball](#) (Bonita Springs)

[CrossFit 239](#) (Fort Myers)

[CrossFit Fort Myers](#) (Fort Myers)

[CrossFit Cape Coral](#) (Cape Coral)

[CrossFit Blaze](#) (Naples)

[CrossFit Redline](#) (Naples)

[North Naples CrossFit](#) (North Naples)

[Ionic CrossFit](#) (Bonita Springs)

# Major Shopping Malls



[Coconut Point](#) – Estero

[Edison Mall](#) – Fort Myers

[Miromar Outlets](#) – Estero

[Tanger Outlets](#) – Fort Myers

[Port Charlotte Town Center](#)

[Bell Tower Shops](#) – Fort Myers

[Coastland Center Mall](#) – Naples

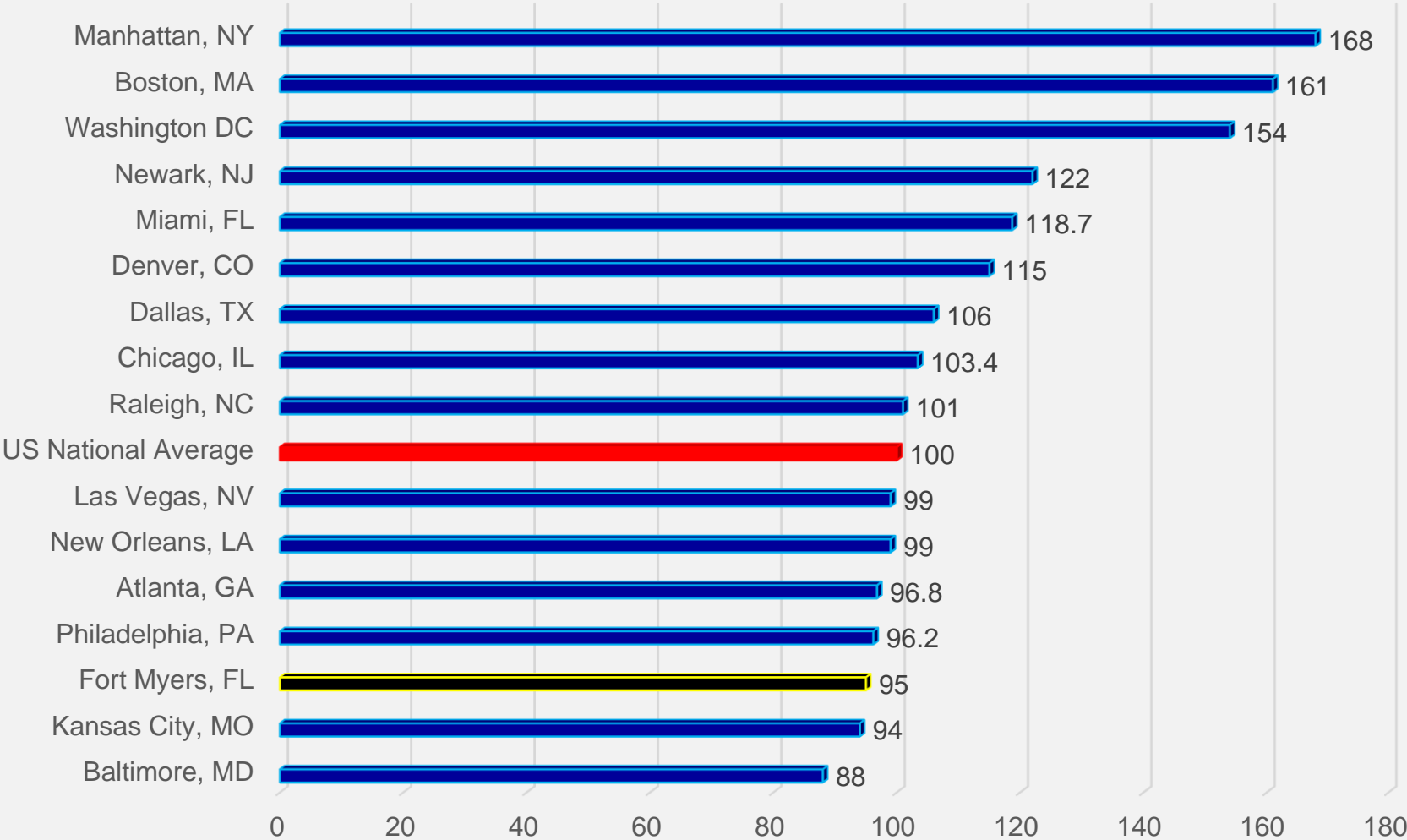
[Gulf Coast Town Center](#) – Fort Myers

[Marco Town Center Mall](#) – Marco Island

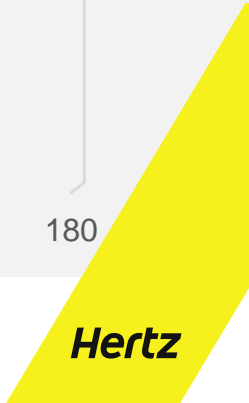
[Mall Seeker.com](#)

# Cost of Living Comparison

This is a multi-city comparison of the average price of consumer goods and services purchased by households.



Data Source: [Sperlings](#)



# Housing Information

This area is very seasonal and there are a significant amount of rentals by owner or through a property management company, so you will find many individual options, in addition to traditional options, using the links below:

[www.apartments.com](http://www.apartments.com)

[www.rentalhouses.com](http://www.rentalhouses.com)

[www.forrent.com](http://www.forrent.com)

[www.rent.com](http://www.rent.com)

[www.apartmentfinder.com](http://www.apartmentfinder.com)

<http://fortmyers.craigslist.org/search/apa>

[www.Zillow.com](http://www.Zillow.com)

[www.trulia.com](http://www.trulia.com)





# Terms of Use

---

The information contained on this Resource has been compiled from various sources and third parties. Such third parties are not affiliated with Hertz and Hertz does not sponsor or endorse such third parties or make any independent verification or guarantee the accuracy of the information being provided by them. You should use this information in conjunction with the information you independently gather prior to deciding whether to relocate. **The links on these pages have been checked for age appropriateness, currency and accuracy. However since web sites are constantly changing we cannot be held responsible for any changes that may have occurred after these pages were linked to our disk.**

Neither Hertz or its agents or contractors can be held liable for any consequences of your personal decision to relocate to a particular community or school district. Your use of this disk is subject to the terms of use.