



ONLINE TIMED AUCTION

**AUCTION ON BEHALF OF TRINITY INDUSTRIES
OVER (100) ITEMS INCL. LARGE CAPACITY FABRICATING & MATERIAL
HANDLING EQUIP. IN (6) STATES: AR, MS, AL, GA, NC & TN**



**P&H
88 T. CAP.
X 77'
SPAN
DOUBLE
LEG
GANTRY
CRANE**



**VERSON
500 T. CAP X
16' HYDRAULIC
PRESSBRAKE**



**TINIUS OLSON
120,000-LB.
CAP. TENSILE
TESTER**

**BIDS START CLOSING
THURSDAY, JUNE 4 AT 10:00 A.M.**



JBI 20'W. X 96'L. PAINT SPRAY BOOTH

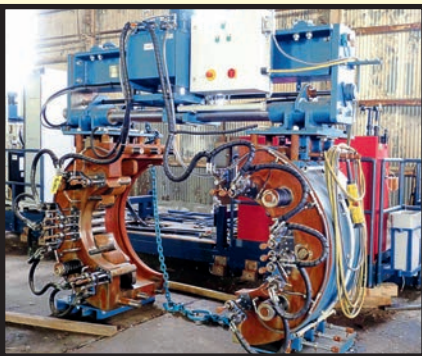
2000



JBI 14'W. X 18'H. GAS FIRED PAINT BAKE OVEN



**POTAIN 11,022-LB. CAP.
TOWER CRANE**



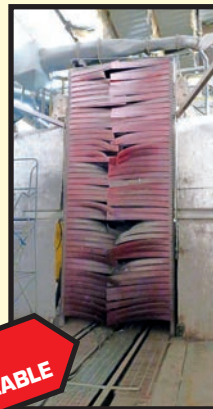
ROSOMA WIND TOWER CLAMP

INSPECTION:

By Appointment Only

ONLINE BIDDING:
YOU MUST REGISTER IN
ADVANCE FOR ONLINE
BIDDING AT THIS AUCTION.
Go to www.pmi-auction.com
and click on *BidSpotter.com* on
our calendar page for this
auction sale.

**6
AVAILABLE**



**MARINE TRAVELIFT 80,000-LB. CAP.
MOBILE GANTRY CRANE**

18% BUYER'S PREMIUM WILL APPLY

Read Partial Terms and Conditions on Back Page of Brochure

Sale Conducted By:

PLANT & MACHINERY INC.
AUCTIONEERS • APPRAISERS • LIQUIDATORS • REAL ESTATE

Ron Moore, TX Lic. #7314
HOUSTON • DALLAS • ST. LOUIS

Headquarters:
1304 Langham Creek Drive, Suite 454
Houston, Texas 77084

PHONE: (713) 691-4401

FAX: (713) 672-7905

**E-MAIL: pmi@pmi-auction.com
WEBSITE: www.pmi-auction.com**

LOCATION A TRINITY INDUSTRIES

1401 N Decatur St., Montgomery, AL 36104

INSPECTION: By Appointment Only –
Contact: Jimmy Clopton (256) 225-6886

**BIDS START CLOSING THURSDAY,
JUNE 4 AT 10:00 A.M.**

**ONLINE BIDDING: YOU MUST REGISTER IN ADVANCE FOR ONLINE BIDDING
AT THIS AUCTION. Go to www.pmi-auction.com and click on BidSpotter.com
on our calendar page for this auction sale.**



WHEELABRATOR PASS-THRU BLAST MACHINE



JBI 20'W. X 96'L. PAINT SPRAY BOOTH

6
AVAILABLE

2000

SHOT BLASTING & PAINTING SYSTEMS

CAB SYSTEMS RAILCAR BLAST FACILITY, approx. 5,000-lb. blast pot w/sand hopper, air receiver tank, Copeland refrigerated air dryer, dbl. end design, approx. 80'L. x 18'W., (2) fixed blast mezzanines, waterfall type dust collector, fluorescent lighting, recirculating grit system.

WHEELABRATOR PASS-THRU VERTICAL SHOT BLAST MACHINE, (8) 20 HP wheels, recirculating abrasive system, approx. 60" x 144" opening size, suitable for monorail or rail use.

WHEELABRATOR PASS-THRU SHOT BLAST, (9) 22" 20 HP belt driven blast wheels, approx. 60" x 14' ht. openings.

JBI GAS FIRED PAINT BAKE OVEN, approx. 14'W. x 18'H. x 96'L. roll-up end doors, galvanized panel construction, gas fired, 96'L. of oven.

JBI PAINT SPRAY BOOTH, new 2000, pwr. roll-up doors, updraft booth, 20'W. x 96'L. booth size, explosion proof lighting, (6) man entry doors, S/N 30129A.

FABRICATING EQUIPMENT

VERSON 500 T. CAP. MDL. H500-12 HYDRAULIC PRESSBRAKE, 16' overall length of bed and ram, 12" stroke, 10" shut ht., 24"W. permanently flanged bed, S/N 13585.

CINCINNATI 300 T. CAP. SERIES 12 MECHANICAL PRESSBRAKE, 16' overall, 14'-6" dist. btwn. columns, S/N N.A.

CINCINNATI MDL. HSX12375 HYDRAULIC SHEAR, 3/8" x 12', CNC backgauge, S/N 51496.

CUSTOM BUILT APPROX. 250 T. CAP. HYDRAULIC PUNCH, 4-post, 18" x 12" dist. btwn. posts, unitized hyd. system.

WHITNEY MDL. 845F ANGLEMATIC CNC ANGLE PROCESSOR, Westinghouse Producer CNC control, infeed conveyor system.

PULLMAX MDL. Z-91 PLATE BEVELING MACHINE.

LOT OF WELDING BEAMS, assorted.



JBI
14'W. X 18'H.
GAS FIRED
PAINT BAKE
OVEN



VERSON
500 T. CAP. X
16' HYDRAULIC
PRESSBRAKE



CINCINNATI
3/8" X 12'
HYDRAULIC
SHEAR



CUSTOM
250 T. CAP.
HYDRAULIC
PUNCH

LOCATION A TRINITY INDUSTRIES

1401 N Decatur St., Montgomery, AL 36104

INSPECTION: By Appointment Only – Contact: Jimmy Clopton
(256) 225-6886

**BIDS START CLOSING THURSDAY,
JUNE 4 AT 10:00 A.M.**

**ONLINE BIDDING: YOU MUST REGISTER IN ADVANCE FOR ONLINE BIDDING
AT THIS AUCTION. Go to www.pmi-auction.com and click on BidSpotter.com
on our calendar page for this auction sale.**



CAB SYSTEMS RAILCAR BLAST FACILITY



(1 OF 10) ABELL-HOWE 1 T. WALL MOUNTED JIB CRANES

**10
AVAILABLE**



25' W. SINGLE LEG
GANTRY CRANE



BABIN CIRCLE-MATIC
24" BOLT CIRCLE DRILL



FOSDICK 6' X 17" TRACK TYPE
RADIAL ARM DRILL

PRESSES

VERSON 1,500 T. CAP. MDL. 1500-HD3-180-196-4T COLUMN STYLE HYDRAULIC PRESS, 154" x 122" btwn. housings, 60" stroke, 84" daylight, 500 T. cap. ejector cushion, 30" cushion stroke, top-mounted hydraulics, T-slotted ram and bolster, S/N 23332 (Disassembled).

BEATTY SLAB FRAME STRAIGHT SIDE MECHANICAL PRESS, air clutch, approx. 60" x 60" bed and ram.

CLEARING MDL. SG-2500-160 500 T. CAP. DOUBLE CRANK GAP PRESS, 42" x 160" bed size, assorted bed and ram spacers, S/N N.A.

MACHINE TOOLS

BULLARD VERTICAL TURRET LATHE, 42" spiral drive, 4-jaw chuck, side head, D.R.O., S/N 19906.

HANCHETT 36" VERTICAL ROTARY SURFACE GRINDER.

CINCINNATI 24" HEAVY DUTY PLAIN MECHANICAL SHAPER.

FOSDICK 6' X 17" TRACK TYPE RADIAL ARM DRILL.

FOSDICK 6' X 13" TRACK TYPE RADIAL ARM DRILL.

(2) BABIN CIRCLE-MATIC 24" BOLT CIRCLE DRILLS, 15" 3-jaw chuck, 10 HP, 6" stroke.

MATERIAL HANDLING EQUIPMENT

(10) ABELL-HOWE 1 T. CAP. WALL MOUNTED JIB CRANES, Shaw Box wire rope hoist; **CUSTOM BUILT 5 T. CAP. GANTRY CRANE**, sgl. leg, dbl. girder, 13' ht. under rail (currently disassembled); **(6) UNDERHUNG WIRE ROPE HOISTS**, 15 T. cap., pwr. trolley; **ASSORTED CRANE PARTS**: trolleys w/wire rope hoists and assorted end trucks; **(4) TEAR DROP PALLET RACK SECTIONS**, 48"D. x 11'H. x 3-tier, w/wire shelving; **GANTRY CRANE**, approx. 25'W., sgl. leg, 15' ht. under hook, pendant control; **DIXON 1,000-LB. CAP. MDL. USA-60A FORKLIFT MAN BASKET**, crane lugs; **GALBREATH SELF-DUMPING HOPPER**, 3 cu. yd. cap.

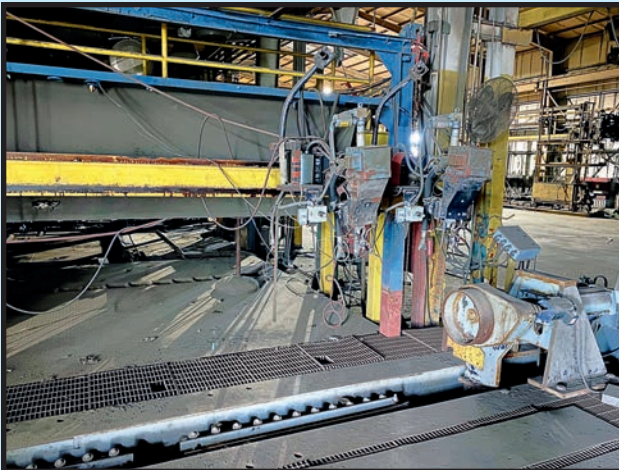
**DON'T MISS
THIS SALE!**



BERTSCH 1-1/2" X 10' MECHANICAL PLATE ROLL



DEUMA MDL. MBLR10 I.D. BOOM WELDING SYSTEM



TANK WELDING LINE



PANDJIRIS 10 T. CAP. POWER AND IDLER TANK TURNING ROLL SET

**LOCATION B
TRINITY INDUSTRIES
1549 Vance Street,
Rocky Mount, NC 27801**

Inspection: By Appointment Only –
Contact: David Bowers (252) 883-0130

**BIDS START
CLOSING
THURSDAY,
JUNE 4 AT
10:00 A.M.**

TANK FABRICATING EQUIPMENT

BERTSCH MECHANICAL PLATE ROLL, 20" dia. top roll, approx. 1-1/2' x 10'L. cap., S/N N.A.

DEUMA MDL. MBLR10 I.D. BOOM WELDING SYSTEM, 25' of travel, rack and pinion drive, Lincoln NA-S3 control, Lincoln Lincolnweld NA-4 wire feeder, S/N 4664.

CUSTOM 3-RAM HYDRAULIC RE-ROUNDING CLAMPS, approx. 6', 10' and 11' cap.

TANK TURNING ROLL AND ROLL ADVANCEMENT LINE, consisting of: (7) adj. hyd. tank turning rolls, (3) pwr'd. tank advancing roll sets, (25) sets of idler rolls, entire line is approx. 75'L., 4' adj. dist. btwn. tank turning rolls, hyd. operation, hyd. control.

ADJUSTABLE TANK TURNING WELDING LINE, 60'L., carriage consisting of: Lincoln NA-35 control, Lincoln Lincolnweld NA-4 wire feeder, adj. is by rack and pinion and pulley system, swiveling feature, 7'-25' ht. under welding point w/8' add'l. vert. travel.

TANK WELDING LINE, hyd. headstock and tailstock, dual traveling welding heads w/Lincoln Electric Mdl TC3 controls, approx. 25' carriage travel, adj. rail by way of chain hoist, 4' min./8' max. dia., (2) slag chip conveyors, Miller Deltaweld 451 pwr. source, S/N KD356589.

POWER AND IDLER TANK TURNING ROLL SET, approx. 15 T. cap.

PANDJIRIS APPROX. 10 T. CAP. POWER AND IDLER TANK TURNING ROLL SET, rail mtd.

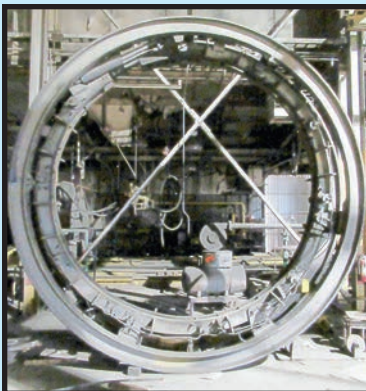
**(1 OF 3) CUSTOM
3-RAM HYDRAULIC
RE-ROUNDING CLAMPS**

**DON'T
MISS
THIS
SALE!**

**ADJUSTABLE TANK
TURNING WELDING LINE**



**ONLINE BIDDING:
YOU MUST REGISTER
IN ADVANCE FOR
ONLINE BIDDING
AT THIS AUCTION.
Go to www.pmi-auction.com
and click on
BidSpotter.com
on our calendar page
for this auction sale.**



LOCATION B

INSPECTION: By Appointment Only –
Contact: David Bowers (252) 883-0130

TRINITY INDUSTRIES

1549 Vance Street,
Rocky Mount, NC 27801

**ONLINE BIDDING: YOU MUST REGISTER
IN ADVANCE FOR ONLINE BIDDING
AT THIS AUCTION. Go to
www.pmi-auction.com and click on
BidSpotter.com on our calendar page
for this auction sale.**

**BIDS START CLOSING
THURSDAY, JUNE 4 AT 10:00 A.M.**



PANDJIRIS MDL. 96E8-42 SEAM WELDER



MARINE TRAVELIFT 80,000-LB. CAP.
MOBILE GANTRY CRANE



POTAIN 11,022-LB. CAP. TOWER CRANE

FABRICATING EQUIPMENT

PANDJIRIS MDL. 96E8-42 SEAM WELDER, 10'L., Pandjiris control, Lincoln Electric DC Lincolnweld NA-3N solid state auto. wire feeder, Miller Mdl. SRH-333 power source, S/N 12680E00.

DOALL MDL. C-916-M HORIZONTAL BANDSAW, new 1998, 158" band length, 9" rd. cap., 16" rect. cap., S/N S27-98919.

CINCINNATI 10' MECHANICAL SHEAR, .106"–.177" material thickness range, S/N 12503.

HYDRAULIC PUNCH PRESS, Allen Bradley controls, approx. 8'W. bed.

LOT OF WELDING MACHINES: (2) Hobart Mdl. Excel-Arc 60450V–(1) w/2010 wire feeder and (1) SureWeld Mdl. DRH555A.

LOT CONSISTING OF: adj. headstock and tailstock vertically and can be positioned in/out, set of approx. 15' fit-up rolls, hyd. pwr. source.

SHOT BLASTING EQUIPMENT

BLAST ROOM, 24' x 75', rail served, dust collection system, (6) cartridges.

WHEELABRATOR PLATE BLASTING MACHINE, remfg. by Blastec in 2005, (4) 24" wheels, 30 HP ea. wheel, 3,191 H.O.M.

MOBILE GANTRY CRANE

MARINE TRAVELIFT 80,000-LB. CAP. MDL. 40AMG, Chalmers Mdl. G-226 engine, 4-1/2" stroke, 226 cu. in., (4) 20,000-lb. cap. spreader bars, S/N 983467.

TOWER CRANE

POTAIN 11,022-LB. CAP. MDL. MC85A2C, new 1999, 98'-42" fully extendable reach, 5,511-lb. cap., S/N 82906.

MATERIAL HANDLING EQUIPMENT

MULTI-SECTION PLATE HANDLING SYSTEM, rubber wheel motor driven advancement mechanism w/change ribbon section, (5) ttl. sections, approx. 60' ttl. length on system, pwr. by rubber wheels and chain drive.

PLANT SUPPORT EQUIPMENT

SULLAIR MDL. 25-150 ROTARY SCREW AIR COMPRESSOR, 25 HP motor, 9,254 H.O.M., S/N 003-81325, w/General Pneumatics Mdl. TK1500A air dryer, air receiving tank, valves and hose.

WATER TOWER, approx. 24'H. x 18' dia., galvanized steel construction.
SELCO CARDBOARD BALER.



WHEELABRATOR
PLATE BLASTING MACHINE



24' X 75' BLAST ROOM



SULLAIR 25 HP ROTARY SCREW
AIR COMPRESSOR

LOCATION C TRINITY INDUSTRIES

1001 Rainer Road, West Memphis, AR 72301

INSPECTION: By Appointment Only –
Contact: Rich Bartchy (469) 516-2994

**BIDS START CLOSING THURSDAY,
JUNE 4 AT 10:00 A.M.**

**ONLINE BIDDING: YOU MUST REGISTER IN ADVANCE FOR ONLINE BIDDING
AT THIS AUCTION. Go to www.pmi-auction.com and click on BidSpotter.com
on our calendar page for this auction sale.**



**P&H 88 T. CAP. X 77' SPAN DOUBLE LEG GANTRY CRANE
(SHOWN PRIOR TO DISASSEMBLY)**



P&H 88 T. CAP. DOUBLE LEG GANTRY CRANE BRIDGE SECTION



GAFFEY 30 T. CAP. DOUBLE LEG GANTRY CRANE UPRIGHTS

GANTRY CRANES

P&H 88 T. X APPROX. 77' SPAN DOUBLE LEG GANTRY CRANE, top running, sgl. girder, approx. 35' ht. under bridge, S/N CJG-36619 (Disassembled).

GAFFEY 30 T. X 66' SPAN DOUBLE LEG GANTRY CRANE, approx. 25' ht. under bridge, Detroit 30 T. hoist and trolley, S/N 146686 (Disassembled).

BRIDGE CRANE & MATERIAL HANDLING EQUIPMENT

GAFFEY 25 T. X APPROX. 62' SPAN OVERHEAD BRIDGE CRANE, top running, dbl. girder, Shaw Box hoist and trolley, dbl. end drive, S/N 97-4097-02.

(2) SELF-DUMPING HOPPERS.

WIND TOWER MATERIAL HANDLING SYSTEM

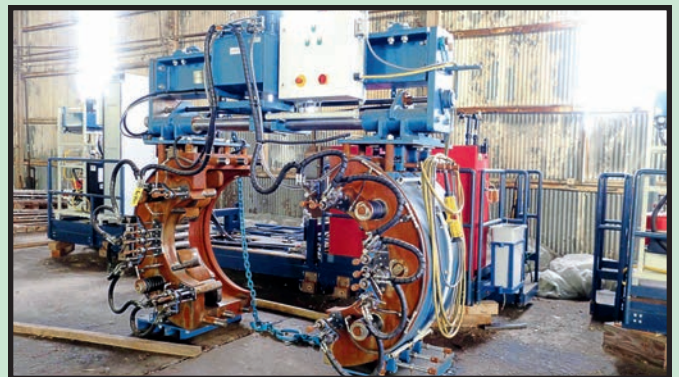
ROFSA AUTOMATIC WIND TOWER TRANSPORT SYSTEM, 120,000 weight cap.; **ROSOMA WIND TOWER CLAMP.**

SHOT BLAST SYSTEM

WHEELABRATOR CONVEYORIZED PASS-THRU SHOT BLAST SYSTEM, (4) 25 HP belt driven wheels, recirculating abrasive system, Webb Mdl. 348 overhead chain conveyor, dust collector.

FORGING PRESS

CUSTOM 3-RAM HYDRAULIC FORGING PRESS, unknown manufacturer, sliding die arrangement, 150 HP hyd. drive systems.



ROSOMA WIND TOWER CLAMP



**WHEELABRATOR
CONVEYORIZED
PASS-THRU
SHOT BLAST
SYSTEM**



**CUSTOM 3-RAM
HYDRAULIC
FORGING PRESS**



MPM 48" CUT-TO-LENGTH LINE



PAXON 60"W. SLITTING LINE

LOCATION D
TRINITY INDUSTRIES
 2235 County Road 2202,
 Kosciusko, Mississippi 39090

INSPECTION: By Appointment Only –
 Contact: Mac Burrell (907) 443-0617

FABRICATING EQUIPMENT

MPM 48" CUT-TO-LENGTH LINE, consisting of: peeler tbl., pinch roll entry unit, air operated pinch roll, 48" hyd. shear, Yoder 48" 7-roll straightener w/entry guide rolls.

PAXON 60"W. SLITTING LINE, approx. 6" arbor dia., entry pinch roll, flip-up threading tbl., separator stand and rewinder w/overhead separator arm, 100 HP rewinder dual scrap rewinders, approx. 50 HP slitter arbor drive, central control stand, skid mtd., 60"W. pay-off reel, approx. 40,000-lb. cap. hyd. expansion, hyd. hold-down snubber, hyd. rotation drive, slide base, UMI coil car, 40,000-lb. cap. elec. lift and travel, 12' travel track, S/N CLC810.

STEELWELD 160 T. CAP. MDL. H3-1/2-10 PRESSBRAKE, 13' overall length of bed and ram, 10'-6" dist. btwn. housings, 12" bed width, 18" throat depth, foot pedal control, 12' x 3/16 cap., 10' x 1/4" cap., S/N M2040.

RHODES-CINCINNATI 225 T. CAP. SERIES 9X14 MECHANICAL PRESSBRAKE, 16' overall, 14'-6" dist. btwn. housings, permanently flanged bed, 24"W., removeable ram angles, air clutch, Link Press control system, S/N 76/16078.

UNITIZED HYDRAULIC POWER SUPPLY, reservoir base, 10 HP motor, directional valve gauges and controls.

**BIDS START CLOSING THURSDAY,
 JUNE 4 AT 10:00 A.M.**

PRESSES

JOHNSON 200 T. CAP. MDL. G2-200-72-30 DOUBLE CRANK GAP PRESS, 8" stroke, 26" shut ht., 6" adj., 30" x 72" bed, 26" x 66" ram, 30 SPM, air clutch, dbl. geared, link break monitor, pwr. slide adj., S/N 68069.

VERSON 100 T. CAP. MDL. 100-B2-72 STRAIGHT SIDE SLAB FRAME PRESS, 8" stroke, 24" shut ht., 5" adj., 30-60 SPM, 14"W. windows, S/N 24962.

BLISS 75 T. CAP. MDL. C-75 OBI PUNCH PRESS, 3-1/2" stroke, 5" adj., 18-1/2" shut ht., control pedestal, 10 T. cap. bed cushion, air clutch and brake, variable spds. to 55 SPM, S/N HP47025.

MISC. MACHINES

AMADA STRUCTURAL BANDSAW, mitre capability, swivel base, 2" blade size, dbl. column design, hyd. semi-automatic operation, H.D. pwr. infeed conveyor, Mdl. W600, S/N H60024, 220 v., 6' outfeed roller conveyor.

CINCINNATI BICKFORD 6' X 15" RADIAL ARM DRILL, S/N 2E-56.

CALLANAN MDL. 8X12 PLASTIC WELDER, Mdl. 20SB pwr. supply, 2 kW, S/N 930709P.

MATERIAL HANDLING EQUIPMENT

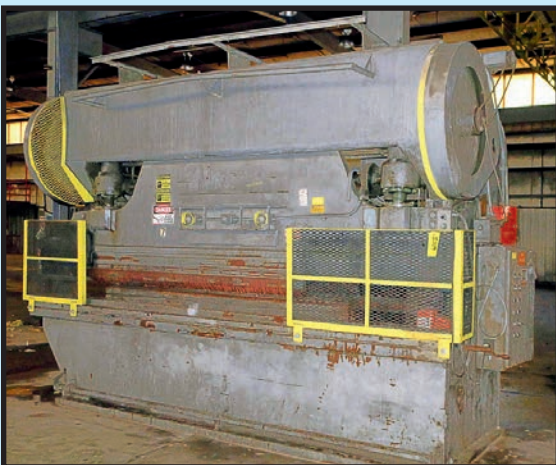
EAVES 17,500-LB. CAP. MDL. E-175 FORKLIFT, 17,500-lbs. @ 24" L.C., Cummins diesel engine, 156" max. lift ht., 80"L. forks, pneu. tires, S/N CE120520019908.



JOHNSON 200 T. CAP. DOUBLE CRANK GAP PRESS



BLISS 75 T. CAP. OBI PUNCH PRESS



STEELWELD 160 T. CAP. X 13' PRESSBRAKE



EAVES 17,500-LB. CAP. DIESEL FORKLIFT

**DON'T MISS
 THIS SALE!**

ONLINE BIDDING: YOU MUST REGISTER IN ADVANCE FOR ONLINE BIDDING AT THIS AUCTION.
 Go to www.pmi-auction.com and click on BidSpotter.com on our calendar page for this auction sale.

**LOCATION E
TRINITY
INDUSTRIES**

811 West Avenue,
Cedartown, GA 30125

INSPECTION:

By Appointment Only –
Contact: Albert Rodney
(470) 232-6125

**BIDS START
CLOSING
THURSDAY,
JUNE 4
AT 10:00 A.M.**

**DON'T MISS
THIS SALE!**



**HPM 400 T. CAP. HYDRAULIC
STRAIGHT SIDE PRESS**



**VERSON 250 T. CAP. STRAIGHT SIDE
HYDRAULIC PRESS**



**HPM 150 T. CAP. STRAIGHT SIDE
HYDRAULIC PRESS**



YODER APPROX. 20,000-LB. CAP. CRADLE FEEDER

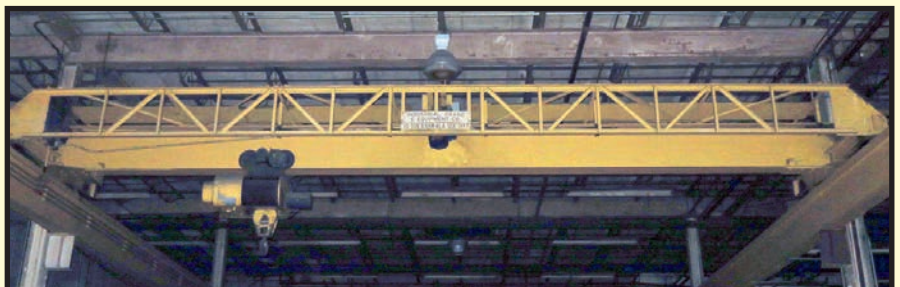


CUSTOM 2 T. X APPROX. 24' SPAN OVERHEAD BRIDGE CRANE SYSTEM



**QUINCY 60 HP
RECIPROCATING
AIR
COMPRESSOR**

**INDUSTRIAL CRANE AND EQUIPMENT 10 T. X APPROX.
36' SPAN OVERHEAD BRIDGE CRANE**



**STRAIGHT SIDE PRESSES
& SUPPORT EQUIPMENT**

HPM 400 T. CAP. HYDRAULIC STRAIGHT SIDE PRESS, approx. 48' R-L x 60" F-B broadside, 36" stroke, S/N 49-2.

VERSON 250 T. CAP. MDL. 250-HD1-36T STRAIGHT SIDE HYDRAULIC PRESS, 36" x 36" bolster size, 16" stroke, 19" shut ht., Mdl. MP14-8 hyd. cushion, 7.7 T. cap., S/N 12179.

HPM 150 T. CAP. STRAIGHT SIDE HYDRAULIC PRESS, 36" stroke, 36" x 36" bed size, S/N N.A.

YODER APPROX. 20,000-LB. CAP. CRADLE FEEDER, air operation, infeed pinch roll, 5-roll straightener (disassembled).

FABRICATING EQUIPMENT

NIAGARA INITIAL PINCH BENDING ROLL, adapted motor drive, 3" roll dia., 40" roll length, 5 HP brake motor drive.

MILLER MDL. MPS-20 SPOT WELDER, sgl. phase, 20 KVA @ 50% duty cycle, 6" throat, S/N JF883929.

LOT CONSISTING OF: assorted 12" roller conveyor and shear blades, 90 deg. pwr. turn-around.

MATERIAL HANDLING

INDUSTRIAL CRANE & EQUIPMENT 10 T. X APPROX. 36' SPAN OVERHEAD BRIDGE CRANE, top running, sgl. girder, underhung hoist, approx. 15' under hook, S/N 117.

CUSTOM BUILT 2 T. X APPROX. 24' SPAN OVERHEAD BRIDGE CRANE SYSTEM, underhung design, 12' under hook, (2) 1 T. wire rope hoists, 2,000-lb. vacuum lift, approx. 24' runway length.

CUSTOM BUILT ELECTRIC TRANSPORT CART, approx. 8'W. x 16'L., 3-rail design.

PLANT SUPPORT EQUIPMENT

QUINCY RECIPROCATING AIR COMPRESSOR, 60 HP motor, 2-stage, skid mtd.



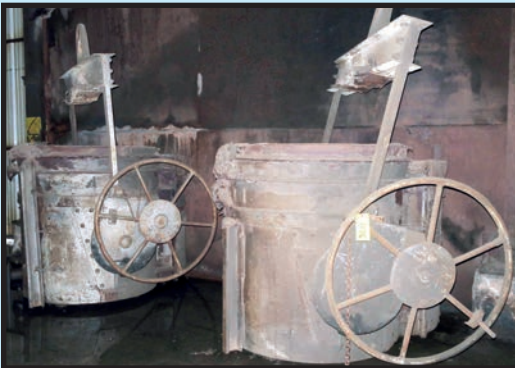
CARRIER APPROX. 60'L. INCLINED VIBRATORY PAN CONVEYOR

LOCATION F
TRINITY INDUSTRIES
 2412 Eulaton Road,
 Anniston, AL 36201
INSPECTION: By Appointment Only –
 Contact: Jimmy Clopton (256) 225-6886



CUSTOM 1/2 T. CAP. FREE STANDING
 PEDESTAL JIB CRANE

MATERIAL HANDLING EQUIPMENT
 CARRIER INCLINED VIBRATORY PAN CONVEYOR, approx. 60'L. x 48"W. x 14"D.
 (2) LOTS OF GEARED BULL LADLES, approx. 5 T. cap.
 (14) SELF-DUMPING HOPPERS.
 (2) FREE STANDING PEDESTAL JIB CRANES, approx. 1/2 T. cap.
 GORBEL PORTABLE JIB CRANE, 1/2 T. cap., Coffing 1/2 T. elec. chain hoist, pendant control.
VACUUM PUMP
 NASH WATER RING VACUUM PUMP, size CL-2002, 100 HP motor, skid mtd., S/N 90D0083.
TESTING EQUIPMENT
 TINIUS OLSON TENSILE TESTER, 120,000-lb. cap.
PLANT SUPPORT EQUIPMENT
 DRY-AIRE REFRIGERATED AIR DRYER; HUSQVARNA MDL. UTH2148 GARDEN TRACTOR, 21 HP motor, 36" deck.



APPROX. 5 T. CAP. GEARED BULL LADLES



NASH SIZE CL-2002 100 HP
 WATER RING VACUUM PUMP



TINIUS OLSON 120,000-LB. CAP.
 TENSILE TESTER



GALBREATH SELF-DUMPING HOPPERS



DRY-AIRE REFRIGERATED AIR DRYER



HUSQVARNA MDL. UTH2148 21 HP
 GARDEN TRACTOR

**ONLINE BIDDING: YOU MUST REGISTER IN ADVANCE FOR
 ONLINE BIDDING AT THIS AUCTION.**
 Go to www.pmi-auction.com and click on BidSpotter.com
 on our calendar page for this auction sale.

BIDS START CLOSING THURS. JUNE 4 AT 10:00 A.M.



MODERN WELDING CO. INC. WATER TANK



MIETHER 150 HP WOOD HOG

ONLINE BIDDING:
YOU MUST REGISTER IN ADVANCE FOR ONLINE BIDDING AT THIS AUCTION.
 Go to www.pmi-auction.com and click on BidSpotter.com on our calendar page for this auction sale.



NASH 40 HP PUMP



INGERSOLL RAND RECIPROCATING AIR COMPRESSOR AND DRYER SYSTEM

LOCATION G TRINITY INDUSTRIES
200 Dynatex Road, Sunbright, Tennessee 37872
INSPECTION: By Appointment Only – Contact: Brenda Kittrell (423) 404-3057

TANKS

MODERN WELDING CO. INC., WATER TANK, new 1986, 3,450 gal. cap., 3,800-lb. weight cap., Job No. 4558, Trinity No. DP962.
WOODTEC MIXING TANK, 160 PSI MAWP, 15 PSI vacuum, 8,300-lb. cap., 240 PSI, 1/2" thk., 1/2" shell, National Board No. 39, Trinity No. DP958, S/N 8645.
MODERN WELDING CO. INC. TANK, new 1986, 10,000 gal. cap., 10,000-lb. cap., Job No. 4556, Customer No. 86-2582-107, Trinity No. DP960.
MODERN WELDING CO. INC. TANK, new 1986, 10,000 gal. cap., 10,000-lb. cap., Job No. 4556, Customer No. 86-2582-107, Trinity No. DP959.
MODERN WELDING CO. INC. WATER TANK, new 1986, 4,220 gal. cap., 7,000-lb. cap., Job No. 4557, Customer No. 86-2582-107, Trinity No. DP957.
WOODTEC TREATING CYLINDER, new 1986, 160 PSI MAWP, 15 PSI vacuum, 240 PSI, 1/2" thk., .563" shell, 24,700-lb. cap., 350 deg. F. max. temp., National Board No. 38, Customer No. 107, Trinity No. DP4227, S/N 8644.

WOOD HOG
MIETHER, 150 HP motor, Toshiba Mdl. B1508FLF4BM, 460 v., chain driven conveyor belt, exhaust fan.

PUMPS
WOM, Baldor 50 HP motor, Trinity No. HT82; **NASH**, Baldor 40 HP motor, Trinity No. C0236.

AIR COMPRESSION EQUIPMENT
INGERSOLL RAND MDL. 2475N7.5V RECIPROCATING AIR COMPRESSOR AND DRYER SYSTEM, new 2012, 7-1/2 HP motor, 175 PSI max. pressure, 80 gal. tank, General Pneumatics Mdl. HT25 dryer, S/N 00LHT4539, S/N CBV106935.

TRUCK SCALE
TOLEDO 4,500-LB. CAP. MDL. 2691, Trinity No. DP834, S/N 3285.

PLANT SUPPORT EQUIPMENT
DIESEL FUEL TANK, approx. 12'L. x 4' dia., pump w/GPI elec. fuel meter, Trinity No. FAC2042; **FROEDGE MDL. PW-407 WINCH**, new 1987, S/N 047.



TOLEDO 4,500-LB. CAP. TRUCK SCALE



CUSTOM DIESEL FUEL TANK



ONLINE TIMED AUCTION

**AUCTION ON BEHALF OF TRINITY INDUSTRIES
OVER (100) ITEMS INCL. LARGE CAPACITY FABRICATING & MATERIAL
HANDLING EQUIP. IN (6) STATES: AR, MS, AL, GA, NC & TN**

BIDS START CLOSING THURSDAY, JUNE 4 AT 10:00 A.M.

GO TO OUR WEBSITE CALENDAR AT WWW.PMI-AUCTION.COM FOR THE LINK TO THE BIDSPOTTER CATALOG.

COVID-19: We will make reasonable efforts to limit health risks, and appreciate your cooperation. Masks are required.

TERMS & CONDITIONS OF ON-LINE AUCTION SALE

ALL BIDS ARE MADE AND RECEIVED UNDER THE TERMS HEREINAFTER SET FORTH TO WHICH TERMS BIDDERS AGREE BY MAKING THEIR BID AT THE SALE. THESE TERMS CANNOT BE ALTERED EXCEPT BY THE AUCTIONEER. NO EMPLOYEE HAS AUTHORITY TO MODIFY SAME. THE OWNER AND/OR AUCTIONEER RESERVE THE RIGHT TO ADD TO OR MODIFY THE TERMS OF THE SALES.

An 18% Buyer's Premium will apply.

This auction may require a credit or debit card 100% refundable deposit. Your credit/debit card added through the Bidspotter.com fully secure and PCI compliant registration process will be assessed a 100% refundable \$3000 (US Bidder) or a \$10,000 (Foreign Bidder) deposit in order to be approved to bid online within this auction. If you are unsuccessful in the auction, your card will be refunded of your deposit within **24 hours** post auction.

Plant & Machinery, Inc. **DOES NOT** take credit cards for auction invoice payments. All payments must be made by Cash, Cashier's Check, Wire Transfer or Company Check with Bank Letter of Guarantee to Plant & Machinery, Inc. (PMI). Here is an example of what your letter should be: **[Mr. "Customer Name" representing "Company Name" is a customer of this bank. This bank will guarantee unqualified payment to Plant & Machinery, Inc. on the account listed herein up to the amount of \$ _____. This letter is good until July 6, 2020.**

By registering, the Bidder hereby expressly authorizes PMI to charge the Credit Card if the Bidder fails to pay any invoice within forty eight (48) hours after each invoice is issued to Bidder.

All bidders are required to give full name, company name, address, phone, fax, email address, and bank information when registering. All bidders must register before bidding.

All bids must be paid in full within two business days after the bids have closed. The Auctioneer shall determine the bidding increments. Some items may be auctioned with reserve.

All purchases must be removed within two weeks after the bids have closed or within the timeframe posted on the sale web page. No lot can, on any account, be removed prior to PMI having been paid in full. Removal shall be at the expense, risk and liability of the Purchaser. Purchases will be delivered only on presentation of paid bill. Auctioneer shall not be responsible for goods not removed within the aforesaid time.

Riggers, movers, electricians or buyer performing work at the Auction Sites must provide Auctioneer with evidence of insurance.

The insurance coverage must be at a level acceptable to Auctioneer and to the Seller.

All checks for deposits and balances due shall be payable to the order of PLANT & MACHINERY, INC. unless instructed otherwise. All bills must be paid to the Houston headquarters offices of the Auctioneer at 1304 Langham Creek Drive, Suite 454, Houston, TX, 77084 or by wire transfer directly to the bank specified in the wire transfer instructions provided for this on-line auction. The full purchase price on all lots sold to the same buyer must be paid within the time fixed and before removal of any of the goods.

THE AUCTIONEER SHALL NOT BE RESPONSIBLE FOR THE CORRECT DESCRIPTION, GENUINENESS, AUTHENTICITY OF, OR DEFECT IN ANY LOT, AND MAKES NO WARRANTY IN CONNECTION THEREWITH. NO SALE SHALL BE SET ASIDE NOR ALLOWANCE MADE ON ACCOUNT OF ANY INCORRECTNESS, ERROR IN CATALOGING, OR ANY IMPERFECTION NOT NOTED. NO DEDUCTION ALLOWED ON DAMAGED ARTICLES, ALL ARTICLES BEING EXPOSED FOR PUBLIC EXHIBITION, AND SOLD "AS IS" AND WITHOUT RECOURSE. ARTICLES ARE NOT WARRANTED AS MERCHANTABLE OR FIT FOR ANY PARTICULAR PURPOSE, AND NO CLAIM MAY BE MADE BY PURCHASER RELATING TO THE CONDITION OR USE OF ARTICLES PURCHASED, OR FOR PROXIMATE OR CONSEQUENTIAL DAMAGES ARISING THEREFROM.

Articles purchased may not incorporate approved activating mechanisms, operating safety devices or safety guards, as required by OSHA or otherwise. It is Purchaser's responsibility that articles purchased be so equipped and safeguarded to meet OSHA and any other requirements before placing such articles into operation.

Purchaser agrees to indemnify and hold Auctioneer harmless from and against all claims and liabilities relating to the condition or use of the articles purchased or failure of user to follow instructions, warnings or recommendations of the manufacturer, or to comply with federal, state and local laws applicable to such articles, including OSHA requirements, or for proximate or consequential damages, costs or legal expenses arising therefrom.

No claims will be allowed after removal of goods from premises.

Auctioneer shall not, in any event, be liable for non-delivery or any other matter or thing, to any Purchaser of any lot other than for the return to the Purchaser of the deposit or sum paid on said lot, should the Purchaser be entitled thereto.

In default of payment of bills in full within the time therein specified, the Auctioneer in addition to all other remedies allowed by law, may retain all monies received as deposit or otherwise, as liquidated damages. Lots not paid for and removed within the time allowed herein may be resold at public or private sale without further notice, and any deficiency, together with all expenses and charges of re-sale, will be charged to the defaulting Purchaser.

Persons attending during exhibition, sale or removal of goods assume all risks of damage of or loss to person and property and specifically release the Auctioneer from liability therefor. Neither the Auctioneer nor his principal shall be liable by reason of defect in or condition of the premises on which the sale is held.

The Auctioneer reserves the right to withdraw from sale any of the property listed or to sell at this sale property not listed, and also reserves the right to group one or more lots into one or more selling lots or to subdivide into two or more selling lots. Whenever the best interest of a Seller will be served, the Auctioneer reserves the right to sell all the property listed, in bulk.

Where items are sold by estimated weight, count or measure, the Auctioneer will be billed for and required to pay for the estimated weight, count or measure. If, upon delivery, any shortage exists, the Purchaser will receive a refund at the rate of purchase. If there be an excess, the Purchaser will be required to pay for such excess, at the rate of purchase.

The Auctioneer reserves the right to reject any and all bids, alter the order of sale, and accept bids made on behalf of the Seller. All bids are visible to the auctioneer. Auctioneer is not responsible for internet lags, delays, blackouts or disconnects.

The record of sale kept by the Auctioneer will be taken as final in the event of any dispute.

The Auctioneer is acting as agent only and is not responsible for the acts of its principals. Purchaser or its representative will independently inspect the goods bid upon by the Purchaser, and acknowledges to the Seller that Purchaser is acquiring all goods "AS IS, WITH ALL FAULTS" and "WITH REMOVAL AT PURCHASERS' RISK AND EXPENSE" and agrees to protect, indemnify and hold harmless the Seller from any and all claims, demands, causes of actions, liabilities and judgments relating to the conditions or use of the goods.

Seller, if not the same as the Auctioneer, shall have the rights, protections and benefits afforded to the Auctioneer as set forth herein.

Although all information has been obtained from sources deemed reliable, the auctioneer and seller make no warranty or guarantee, expressed or implied, as to the accuracy of the information herein contained, or contained in our catalog. It is for this reason that buyers should avail themselves of the opportunity to make inspection prior to the auction. Although it is not likely, auction sales are subject to cancellation or postponement. Kindly contact auctioneer prior to attendance.

ANY ADDITIONAL PROVISIONS OR AMENDMENTS TO THE ABOVE LISTED TERMS WILL BE POSTED TO THE ON-LINE SALE WEB PAGE BY THE AUCTIONEER PRIOR TO THE START OF BIDDING.