

Operation Iraqi Freedom USMC Maintenance Concept Of Operations



Maj M.P. Danhires
CSSB-12, 1st FSSG

Tomorrows Combat Service Support Organization, Today

Operational Framework

- ◆ Conduct expeditionary CSS operations in GS of the MAGTF
- ◆ CSS forces are task organized to conduct multi-functional CSS operations in DS or GS of designated forces
- ◆ Maneuver DS CSS of I MEF maneuver elements
- ◆ Sustain high tempo combat operations across a rapidly expanding I MEF battle space.

Concept of Support (DS/GS)

- ◆ Direct Support **USMC** Organizations
 - Division/Wing Organic Maintenance Units
 - FSSG Mobile DS CSS Units supporting the GCE
 - CSSG – 11 (HQ colocated with Division Main)
 - ◆ CSSB-10 (direct support of separate battalions: LAV, AAV, Tanks, 11th Marines,...)
 - ◆ CSSC-111 (DS of RCT-1)
 - ◆ CSSC-115 (DS of RCT-5)
 - ◆ CSSC-117 (DS of RCT-7)
 - CSSB – 22 (DS of TF Tarawa)



Concept of Support (DS/GS)

◆ General Support Organizations

- FSSG GS Battalions and Maintenance Collection Points
 - CSSB-12 (Operated TAA Coyote, SA Basilone, SA Anderson, SA Chesty, SA Geiger)
 - CSSB-18 (Operated SA Viper, SA Anderson, and & TAA Coyote)

◆ Direct Support Plan

- Maximize mobile maintenance support teams
- Conduct rapid field repairs, selective interchange and/or evacuate to General Support maintenance collection point
- Division of Labor and Repair Cycle Time

◆ Marine Logistics Command

- 4th Echelon
- Limited Depot Function



Major Challenges

- ◆ Motor Transportation
 - Acquiring lift for Intermediate Maintenance Resources
 - Prioritizing use of Material Handling Equipment

- ◆ Distribution of Table of Equipment (T/E)
 - Initial Distribution
 - Redistribution

- ◆ Recovery Assets and Areas of Responsibility
 - Amphibious Assault Vehicle and M88 Tank Retrievers
 - LVS Wreckers



Class IX (Repair Parts)

- ◆ Class IX and SecReps Blocks
 - Initial blocks were adequately stocked
 - Heavy parts draw in the Tactical Assembly Areas (Kuwait)
 - Minimal replenishments from Sources of Supply

- ◆ Parts visibility
 - Iridium Satellite phones to pass data
 - Garrison processes were not transferable to OIF
 - No in-transit visibility, 2 - 45 days transit time in theater based on availability of lift and priority.

- ◆ Selective Interchange and Cannibalization.



Lessons Learned

- ◆ Forward Position SecReps
- ◆ Contract Logistics Support requires in-depth scrutinization
- ◆ Multifunction Maintenance Organizations with Supply integration expedited solutions
- ◆ Recovery Assets, including HETS, are Force Multipliers
- ◆ Fuel and Electric repair is low cost, forward capability that can salvage critical SecReps
- ◆ Rolling Contact Teams are enablers



Questions

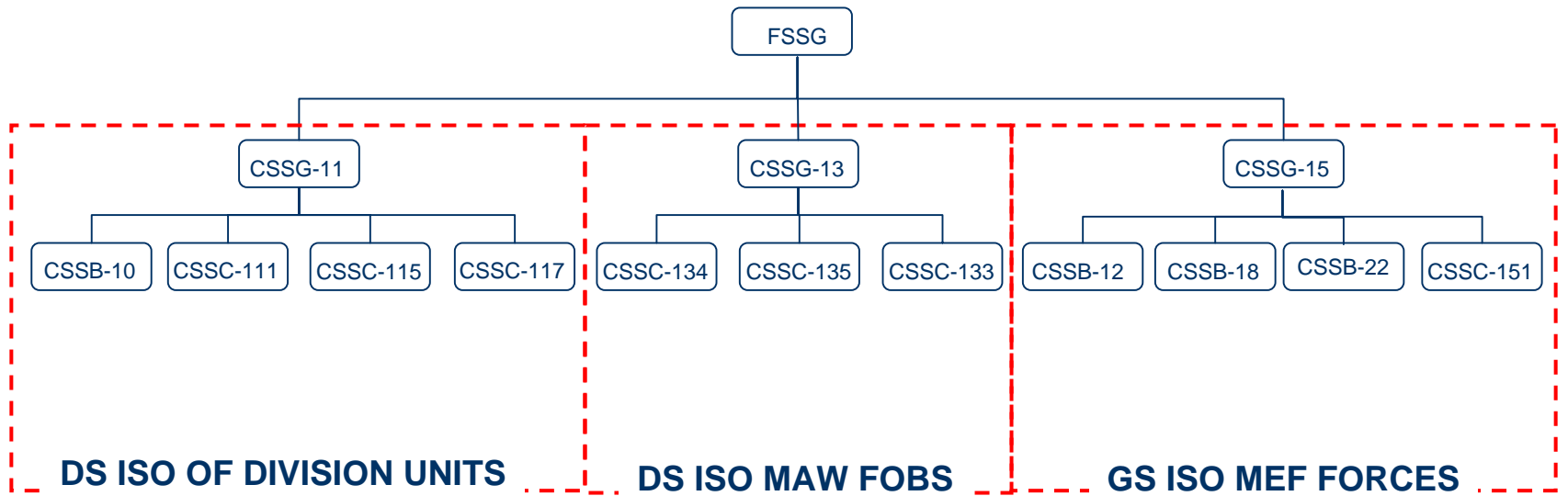


Key Characteristics of the Expeditionary Template

- 🪖 Forward Focused- *Extends the Reach of IMA Support*
- 🪖 Enables the MAGTF's Operational Momentum by providing light, but capable support forward
- 🪖 Complimented by Class IX (Consumables and Repairables) Stock Positioning
- 🪖 Enhances the rapid deployment of forces
- 🪖 Provides for an institutional consolidation of the Supply and Maintenance effort to enhance MEF readiness

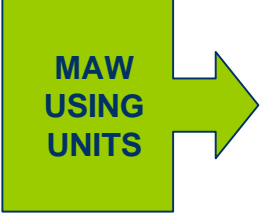
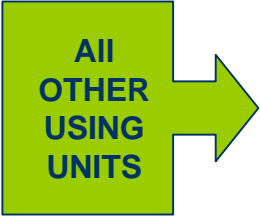
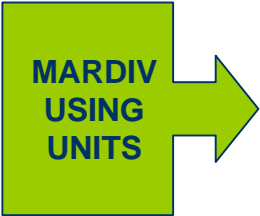


1st FSSG Organizational Structure During OIF

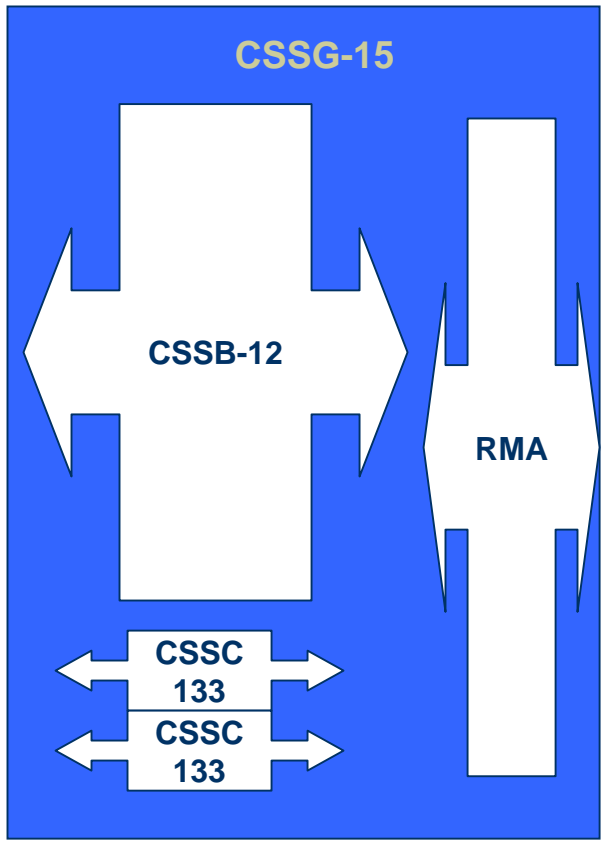
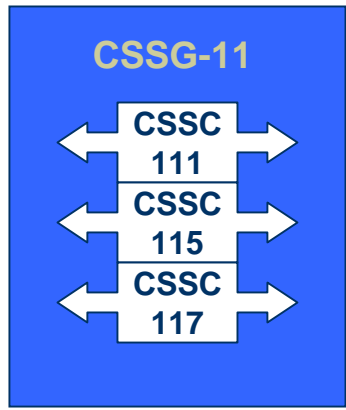


1st FSSG Concept of Maintenance Flow

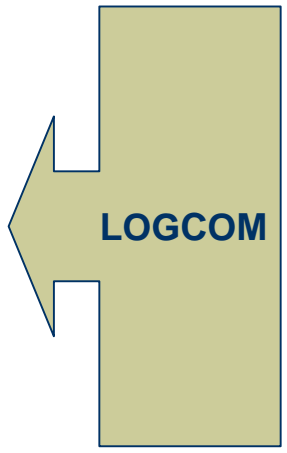
ORGANIZATIONAL MAINTENANCE



INTERMEDIATE MAINTENANCE



DEPOT MAINTENANCE



1st FSSG Concept of Maintenance Support

- ◆ 1st FSSG has created a Direct Support Group (CSSG-11) and a General Support Group (CSSG-15)
- ◆ CSSG-11 (formerly TSB) conducts DS CSS ops ISO of Division and provides maintenance support (3rd Ech) via their subordinate CSSC's
- ◆ CSSB-10 (formerly CSSG-1) conducts DS CSS ops ISO 7th Marines and all units in 29 Palms
- ◆ CSSG-15 (formerly Supply Bn) conducts GS CSS ops ISO the MEF and provides maintenance support (3rd/4th Ech) via its subordinate units; CSSB-12, CSSC-133, CSSC-134, and the Repairables Maintenance Activity
- ◆ Most 4th Ech will be phased out as part of LEI/ROM

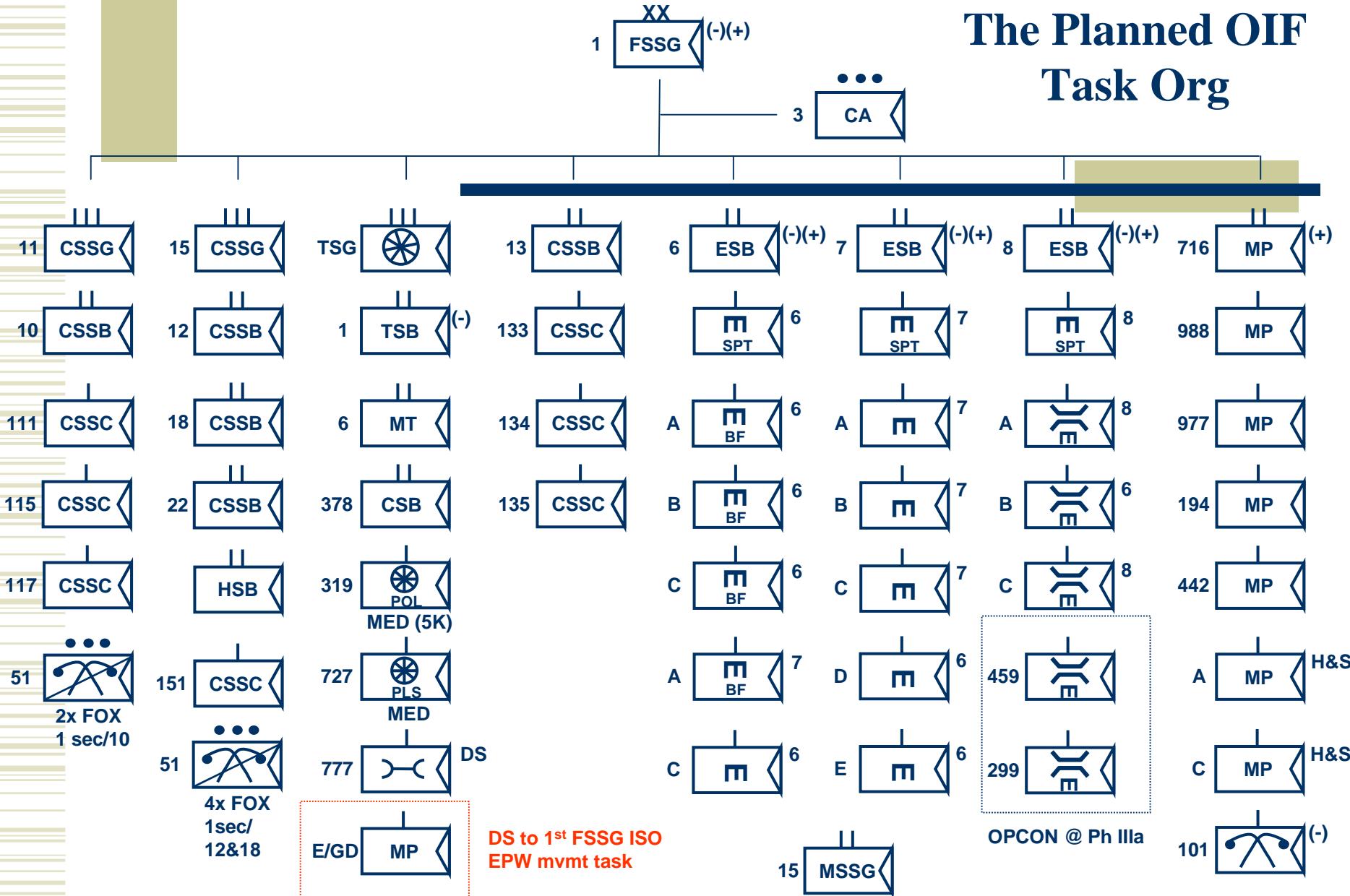


1st FSSG Concept of Maintenance Support (cont.)

- ◆ CSSB-12 provides GS CSS ISO the MEF and provides maintenance support (3rd Ech) via its (4) subordinate CSSC's and its Support Company.
- ◆ CSSC-133 (Formerly IMA Det, Miramar) and CSSC-134 (formerly CSSD-16, Yuma) continue to provide maintenance support (3rd Ech) to the respective 3rd MAW units
- ◆ The RMA is a unit comprised of the SecRep repair capabilities of Maint Bn, the Reparables Issue Point (RIP), and CLS Management for maintenance (i.e. GSM migration to Raytheon Contract)
- ◆ The RMA is focused on the repair, management, and distribution of SecReps IOT best support the MEF



The Planned OIF Task Org



OIF driven changes

