

Oracle® Business Intelligence Applications

Release Notes

11g Release 1 (11.1.1.9)

E53678-06

June 2015

Copyright © 2014, 2015, Oracle and/or its affiliates. All rights reserved.

This software and related documentation are provided under a license agreement containing restrictions on use and disclosure and are protected by intellectual property laws. Except as expressly permitted in your license agreement or allowed by law, you may not use, copy, reproduce, translate, broadcast, modify, license, transmit, distribute, exhibit, perform, publish, or display any part, in any form, or by any means. Reverse engineering, disassembly, or decompilation of this software, unless required by law for interoperability, is prohibited.

The information contained herein is subject to change without notice and is not warranted to be error-free. If you find any errors, please report them to us in writing.

If this is software or related documentation that is delivered to the U.S. Government or anyone licensing it on behalf of the U.S. Government, then the following notice is applicable:

U.S. GOVERNMENT END USERS: Oracle programs, including any operating system, integrated software, any programs installed on the hardware, and/or documentation, delivered to U.S. Government end users are "commercial computer software" pursuant to the applicable Federal Acquisition Regulation and agency-specific supplemental regulations. As such, use, duplication, disclosure, modification, and adaptation of the programs, including any operating system, integrated software, any programs installed on the hardware, and/or documentation, shall be subject to license terms and license restrictions applicable to the programs. No other rights are granted to the U.S. Government.

This software or hardware is developed for general use in a variety of information management applications. It is not developed or intended for use in any inherently dangerous applications, including applications that may create a risk of personal injury. If you use this software or hardware in dangerous applications, then you shall be responsible to take all appropriate fail-safe, backup, redundancy, and other measures to ensure its safe use. Oracle Corporation and its affiliates disclaim any liability for any damages caused by use of this software or hardware in dangerous applications.

Oracle and Java are registered trademarks of Oracle and/or its affiliates. Other names may be trademarks of their respective owners.

Intel and Intel Xeon are trademarks or registered trademarks of Intel Corporation. All SPARC trademarks are used under license and are trademarks or registered trademarks of SPARC International, Inc. AMD, Opteron, the AMD logo, and the AMD Opteron logo are trademarks or registered trademarks of Advanced Micro Devices. UNIX is a registered trademark of The Open Group.

This software or hardware and documentation may provide access to or information about content, products, and services from third parties. Oracle Corporation and its affiliates are not responsible for and expressly disclaim all warranties of any kind with respect to third-party content, products, and services unless otherwise set forth in an applicable agreement between you and Oracle. Oracle Corporation and its affiliates will not be responsible for any loss, costs, or damages incurred due to your access to or use of third-party content, products, or services, except as set forth in an applicable agreement between you and Oracle.

Contents

Preface	v
Audience	v
Documentation Accessibility	v
Related Documentation	v
Conventions.....	v
1 Release Notes	
About These Release Notes	1-1
Obtaining Patches from My Oracle Support	1-1
Oracle Business Intelligence Applications Issues and Workarounds Identified Since the Previous Revision	1-2
Issues and Workarounds for Installation, Upgrade, and Documentation	1-2
Installation.....	1-2
Upgrade	1-3
Documentation Corrections.....	1-9
General Issues and Workarounds	1-10
RCU Fails to Import BIACOMP Data for Version 11.1.1.9.1	1-11
TABS in Sourcing Dashboard Do Not Show Report or Graph.....	1-12
ETL Fails If lead_name Length Exceeds 100 Characters.....	1-12
Data Store Corruption Issue for On-premises Customers Extracting From Fusion Application Sources.....	1-15
NLS Regional Settings Not Save After Logout/Login	1-20
Market Basket Analysis Facts and Dimensions Not Supported.....	1-20
Ignore Non-Fusion Applications FSM Tasks	1-20
Human Resources E-Business Suite Payroll Patches for Payroll Analytics.....	1-21
Load Plan Schedules Missing After Regeneration	1-21
Insufficient Memory During Load Plan Execution	1-21
Deploying Multiple Instances of the Same Source	1-22
SILOS_SIL_NEGOTIATIONLINEFACT - Error Creating Indexes With Duplicate Keys ...	1-22
Non-supported Attributes and Metrics	1-22
Cloud Data Source System: W_PURCH_VARIANCE_XACT_F Is Not Loaded	1-26
Integrating Financial Analytics with Oracle Essbase for E-Business Suite	1-26

Configuring UCM Download for Cloud Data Source Systems.....	1-26
Soft Deletes Not Working With PeopleSoft PSFT91.....	1-26
Correction to Column Precision Value	
W_PURCH_CHANGE_ORDER_F_DEL.DATASOURCE_NUM_ID	1-26
ODI Map Trimming out Trailing Space from Column Data	1-27
Task	
'SDE_PSFT_90_ADAPTOR_SDE_PSFT_PERSISTEDSTAGE_TALENTMGMT_PROFIL	
EITEMS' Fails During ETL.....	1-27
Deployment of the ODI Repository on Non-Oracle Databases is Not Supported	1-28
Data Extraction Error 'XXXDFFBIVO of type View Definition is not found'	1-28
Invalid Filter in SDE_ORA_EmployeeExpenseCreditCardFact_Primary mapping for E-	
Business Suite Source Systems.....	1-28
Enable Data Security for Peoplesoft Data Source	1-30
BI Metadata Repository Issue in Fusion Applications for Security View	1-31
Error During ATG Schema Upgrade	1-32
Missing Soft Delete on Workforce Object	1-33
Duplicate Record for Balancing Segments when Parent and Child are the Same in	
PSTREELEAF.....	1-33
Headcount Movement Detailed Report Displays Error	1-37
Issues and Workarounds for Oracle GoldenGate	1-37

Preface

Oracle Business Intelligence Applications is comprehensive suite of prebuilt solutions that deliver pervasive intelligence across an organization, empowering users at all levels — from front line operational users to senior management — with the key information they need to maximize effectiveness. Intuitive and role-based, these solutions transform and integrate data from a range of enterprise sources and corporate data warehouses into actionable insight that enables more effective actions, decisions, and processes.

Oracle BI Applications is built on Oracle Business Intelligence Suite Enterprise Edition (Oracle BI EE), a comprehensive set of enterprise business intelligence tools and infrastructure, including a scalable and efficient query and analysis server, an ad-hoc query and analysis tool, interactive dashboards, proactive intelligence and alerts, and an enterprise reporting engine.

Audience

This document is intended for administrators of Oracle BI Applications.

Documentation Accessibility

For information about Oracle's commitment to accessibility, visit the Oracle Accessibility Program website at <http://www.oracle.com/pls/topic/lookup?ctx=acc&id=docacc>.

Access to Oracle Support

Oracle customers that have purchased support have access to electronic support through My Oracle Support. For information, visit <http://www.oracle.com/pls/topic/lookup?ctx=acc&id=info> or visit <http://www.oracle.com/pls/topic/lookup?ctx=acc&id=trs> if you are hearing impaired.

Related Documentation

See the Oracle Business Intelligence Applications documentation library at http://docs.oracle.com/cd/E53672_01/index.htm for a list of related Oracle Business Intelligence Applications documents.

Conventions

These text conventions are used in this document.

Convention	Meaning
boldface	Boldface type indicates graphical user interface elements associated with an action, or terms defined in text or the glossary.
<i>italic</i>	Italic type indicates book titles, emphasis, or placeholder variables for which you supply particular values.
monospace	Monospace type indicates commands within a paragraph, URLs, code in examples, text that appears on the screen, or text that you enter.

Release Notes

These release notes describe known issues and workarounds for Oracle Business Intelligence Applications Release 11.1.1.9.1 and 11.1.1.9.2, and contain the following sections:

- [About These Release Notes](#)
- [Issues and Workarounds for Installation_ Upgrade_ and Documentation](#)
- [General Issues and Workarounds](#)
- [Issues and Workarounds for Oracle GoldenGate](#)

Note:

Earlier Oracle BI Applications 11g releases were only for Oracle Fusion Applications source systems. For information about known issues and workarounds in these earlier Oracle BI Applications 11g releases, refer to the Oracle Business Intelligence Applications chapter in *Oracle Fusion Middleware Release Notes*, for the release of Oracle Fusion Middleware in use at your company. You can locate the appropriate Oracle Fusion Middleware documentation library from the Oracle Documentation page at this URL:

<http://www.oracle.com/technetwork/indexes/documentation/index.html>

About These Release Notes

These release notes are updated periodically as new information becomes available.

To ensure that you are reading the latest version of the release notes, check the Oracle Business Intelligence Applications Documentation set. The most current version of *Oracle Business Intelligence Applications Release Notes* is available:

- On the Oracle Technology Network at:

<http://www.oracle.com/technetwork/middleware/bi-foundation/documentation/bi-apps-098545.html>

(to register for a free account on the Oracle Technology Network, go to:

<http://www.oracle.com/technetwork/index.html>)

Obtaining Patches from My Oracle Support

Periodically, Oracle Business Intelligence Applications patches are released.

To see the patches that are available, go to My Oracle Support (formerly Oracle MetaLink) using the following URL:

<http://support.oracle.com>

For additional information about obtaining patches, see 'Downloading and Applying Required Patches' in [Oracle Fusion Middleware Infrastructure Release Notes](#).

Oracle Business Intelligence Applications Issues and Workarounds Identified Since the Previous Revision

These issues and workarounds related to Oracle Business Intelligence that have been identified since the previous revision of the Release Notes.

- [Upgrading from Oracle BI Applications V11.1.1.8.1 PB6](#)
- [Upgrading from Oracle BI Applications V11.1.1.9.1](#)
- [New Parameters Introduced in 9.1](#)
- [Precision Value Incorrectly Set when Upgrading from Oracle BI Application 11.1.1.8.1 PB6 to 11.1.1.9.2](#)
- [Upgrade Load Plan Correction for PeopleSoft HCM 8.1 to 9.2](#)
- [Upgrade Load Plan 'Upgrade BIApps 111181 to 111191 PSFT 91 HCM' unable to load W_TLNT_PRFL_ACHVMNT_FS](#)
- [Upgrade Load Plan for PeopleSoft Version 9.1 HCM is Unable to Upgrade Data in Column cost_center_wid](#)
- [Reset History Tracking Step for Oracle Business Analytics Warehouse Tables](#)
- [Upgrade error due to incorrect datastore name in ETL_LOAD_DATE](#)
- [BUYER_WID Not Resolved In W_RQSTN_LINE_COST_F with Fusion Applications Data Sources](#)

Issues and Workarounds for Installation, Upgrade, and Documentation

These issues and workarounds are for specific areas, such as installation, upgrade, security, and documentation.

Installation

This issue involves installing Oracle Business Intelligence Applications.

Prerequisite Check of Operating System Certification for Windows 2012 is Failing

This issue applies to operating system certification.

While installing BIAPPS 11.1.1.9.1 and 11.1.1.9.2 on Windows 2012 platforms, in the Prerequisite Checks page, you may see an error of Checking Operating system certification.

Workaround

Click **Continue** to resume the installation.

Upgrade

These issues involve upgrading Oracle Business Intelligence Applications.

Note: For OBIA version 11.1.1.8.1, you can upgrade from OBIA version 11.1.1.8.1 PB6 only. When you upgrade from 11.1.1.8.1 PB6, you need to move directly to 11.1.1.9.2 and not 11.1.1.9.1. If you are on OBIA version 11.1.1.9.1, then you can upgrade to version 11.1.1.9.2.

Upgrading from Oracle BI Applications V11.1.1.8.1 PB6

For information about upgrading from Oracle BI Applications V11.1.1.8.1 PB6, refer to Oracle BI Applications Upgrade Guide (Doc ID 2002382.1) on My Oracle Support (support.oracle.com).

Upgrading from Oracle BI Applications V11.1.1.9.1

For information about upgrading from Oracle BI Applications V11.1.1.9.1, refer to Oracle BI Applications: Upgrading to 11.1.1.9.2 from 11.1.1.9.1 (Doc ID 2016413.1) on My Oracle Support (support.oracle.com).

New Parameters Introduced in 9.1

OMBOOKING_ENABLED

A new parameter is introduced into BI Applications Configuration Manager in Release 9.1 called OMBOOKING_ENABLED. This parameter is related to the subject area of Sales Booking Lines Fact and is an advanced feature of Oracle Business Intelligence Applications. It can powerfully analyze the changing history of every sales order by any dimension. However, its ETL is complex and require significant experience to implement. Consequently, the ETL is disabled by default.

Note: Make sure you clearly understand the benefit vs. involvement before you enable it. You can enable it by setting the value of this parameter to **Y** before running Upgrade Load Plan.

OMCUSTSTATHIST_ENABLED

A new parameter is introduced into BI Applications Configuration Manager in Release 9.1 called OMCUSTSTATHIST_ENABLED. This parameter is related to the subject area of Customer Status History Fact & is an advanced feature of Oracle Business Intelligence Applications. It can powerfully analyze every customer's life cycle, that is, acquisition, activity, and attrition, across all sales orders. However, its ETL is complex and require significant experience to implement. Consequently, the ETL is disabled by default.

Note: Make sure you clearly understand the benefit vs.involvement before you enable it. You can enable it by setting the value of this parameter to **Y** before running Upgrade Load Plan.

Precision Value Incorrectly Set when Upgrading from Oracle BI Application 11.1.1.8.1 PB6 to 11.1.1.9.2

After upgrading from 11.1.1.8.1 PB6 to 11.1.1.9.2, the data warehouse schema has an issue because the precision value is set incorrectly during the schema upgrade.

Workaround

Execute this statement in the data warehouse (DW schema) before running the Incremental Load Plan for Procurement and Spend Analytics.

```
ALTER TABLE w_purch_change_order_f_del MODIFY (DATASOURCE_NUM_ID  
NUMBER (10,0));
```

Upgrade Load Plan Correction for PeopleSoft HCM 8.1 to 9.2

The ODI '11.1.1.9.1P' PeopleSoft Upgrade Load Plans contain steps that cause a partial refresh of W_TLB_ENTRY_STATUS_DS, which is not required.

Workaround

Before you execute any of the 11.1.1.9.1P PeopleSoft Upgrade Load Plans, perform the following workaround:

1. In ODI Designer, navigate to BI Apps Project > Load Plans and Scenarios > Predefined Load Plans > Upgrade, and open the load plan that is appropriate to your Peoplesoft version:
 - Upgrade BIApps 111181 to 111191 PSFT 90 HCM
 - Upgrade BIApps 111181 to 111191 PSFT 91 HCM
 - Upgrade BIApps 111181 to 111191 PSFT 92 HCM
2. Navigate to the UPGRADE_FACTS > Is HCM Enabled > HCM > SDE > Time and Labor > TLSTATUS_DIM node, and clear the check box for this node.
3. Navigate to the UPGRADE_FACTS > Is HCM Enabled > HCM > SIL > Time and Labor > TLSTATUS_DIM node, and clear the check box for this node.
4. Save the load plan and start the ETL.

Upgrade Load Plan 'Upgrade BIApps 111181 to 111191 PSFT 91 HCM' unable to load W_TLNT_PRFL_ACHVMNT_FS

This issue applies to PeopleSoft V9.1 data sources.

When you execute the Upgrade Load Plan 'Upgrade BIApps 111181 to 111191 PSFT 91 HCM', the data for W_TLNT_PRFL_ACHVMNT_FS is not loaded due to a variable refresh issue.

Workaround

Before you execute the Upgrade Load Plan **Upgrade BIApps 111181 to 111191 PSFT 91 HCM**, perform the workaround.

1. In ODI Designer, navigate to BI Apps Project > Load Plans and Scenarios > Predefined Load Plans > Upgrade, and open the **Upgrade BIApps 111181 to 111191 PSFT 91 HCM** Load Plan.

2. Navigate to the PSFT_91_HCM > UPGRADE_FACTS > Is HCM Enabled > 'When Value = Y' > HCM > SDE > TLNTMGMT_FG Step.
3. In the Variables List for **TLNTMGMT_FG Step**, select the refresh checkbox for the variable named **HR_PSFT_TLNT_CONTENT_TYPES_FILTER**.
4. Save the Load plan and start the ETL.

Upgrade Load Plan for PeopleSoft Version 9.1 HCM is Unable to Upgrade Data in Column **cost_center_wid**

The Upgrade Load Plans for Upgrade BIApps 111181 to 111191 PSFT 91 HCM are unable to upgrade data in column **cost_center_wid** column in the Absence and Accrual Fact.

Workaround

Before you execute the Upgrade Load Plan 'Upgrade BIApps 111181 to 111191 PSFT 91 HCM', perform this workaround.

1. In ODI Designer, navigate to BI Apps Project > Upgrade > PLP_111181_to_111191_Upgrade > PLP_AbsenceEventFact_UPG.
2. Navigate to the interface **PLP_AbsenceEventFact_UPG.W_Absence_Event_F**.
3. Display the **Flow** tab and change the value for **OBI_SQL_OVERRIDE** in IKM property to:

```
UPDATE QUALIFY(W_ABSENCE_EVENT_F) ABS_F SET
ABS_F.cost_center_wid=(select WRKFC_F.cost_center_wid from
QUALIFY(W_WRKFC_EVT_F) WRKFC_F
WHERE WRKFC_F.ASSIGNMENT_ID=ABS_F.ASSIGNMENT_ID AND
WRKFC_F.DATASOURCE_NUM_ID=ABS_F.DATASOURCE_NUM_ID
And (WRKFC_F.MAX_SEQ_IND=1)
And (ABS_F.ABSENCE_DT >=WRKFC_F.EFFECTIVE_FROM_DT AND
ABS_F.ABSENCE_DT <
WRKFC_F.EFFECTIVE_TO_DT)) WHERE (ABS_F.cost_center_wid =0) and
ABS_F.ASSIGNMENT_ID in
(select WRKFC_F.ASSIGNMENT_ID from QUALIFY(W_WRKFC_EVT_F)
WRKFC_F WHERE
WRKFC_F.ASSIGNMENT_ID=ABS_F.ASSIGNMENT_ID AND
WRKFC_F.DATASOURCE_NUM_ID=ABS_F.DATASOURCE_NUM_ID
And (WRKFC_F.MAX_SEQ_IND=1)
And (ABS_F.ABSENCE_DT >=WRKFC_F.EFFECTIVE_FROM_DT AND
ABS_F.ABSENCE_DT <
WRKFC_F.EFFECTIVE_TO_DT))
```

4. Save the interface, then regenerate the scenario.
5. Navigate to BI Apps Project - Upgrade > PLP_111181_to_111191_Upgrade > PLP_AccrualTransactionFact_UPG.
6. Navigate to the interface **PLP_AccrualTransactionFact_UPG.W_Accrual_Xact_F**.
7. Display the **Flow** tab and change the value for **OBI_SQL_OVERRIDE** in IKM property to:

```
UPDATE QUALIFY(W_ACCRUAL_XACT_F) ACR SET
ACR.cost_center_wid=(select WFC.cost_center_wid from
QUALIFY(W_WRKFC_EVT_F) WFC WHERE
WFC.ASSIGNMENT_ID = ACR.ASSIGNMENT_ID AND
WFC.DATASOURCE_NUM_ID=ACR.DATASOURCE_NUM_ID
```

```

And (ACR.TRANSACTION_DT >= WFC.EFFECTIVE_FROM_DT AND
ACR.TRANSACTION_DT <
WFC.EFFECTIVE_TO_DT)
And (WFC.MAX_SEQ_IND=1)) WHERE
(ACR.cost_center_wid =0) and ACR.ASSIGNMENT_ID in
(select WFC.ASSIGNMENT_ID from QUALIFY(W_WRKFC_EVT_F) WFC WHERE
WFC.ASSIGNMENT_ID = ACR.ASSIGNMENT_ID AND
WFC.DATASOURCE_NUM_ID=ACR.DATASOURCE_NUM_ID
And (ACR.TRANSACTION_DT >= WFC.EFFECTIVE_FROM_DT AND
ACR.TRANSACTION_DT <
WFC.EFFECTIVE_TO_DT)
And (WFC.MAX_SEQ_IND=1))

```

8. Save the interface, then regenerate the scenario.

Reset History Tracking Step for Oracle Business Analytics Warehouse Tables

This issue applies to Oracle Business Analytics Warehouse tables.

The Upgrade Load Plan BIApps 111181 to 111191 for HCM PSFT and EBS is unable to refresh (truncate and reload) the following tables due missing step for Oracle Business Analytics Warehouse tables W_WRKFC_EVT_AGE_F, W_WRKFC_EVT_POW_F, W_WRKFC_EVT_MERGE_F, W_WRKFC_EVT_MONTH_F, and W_WRKFC_EVT_POW_F.

Workaround

Before you execute the Upgrade Load Plan, truncate the warehouse tables.

1. In ODI Designer, navigate to Load Plan Definition > Reset History Tracking Table.
2. Right click **Add Step** with the following information:

```

Step Type: Run Scenario
Step Location: Add a Child Step to Selection
Scenario name: RESET_W_ETL_LOAD_DATES
Step Name: Reset - HCM Warehouse
version: -1

```

3. Select the new step and navigate to **Scenario Variables** section under the **Property Inspector**, edit the following variables and set the **Value** column without any extra spaces:

- BIAPPS.DDL_TABLE_LIST

For the following EBS upgrade Load plans:

- Upgrade BIApps 111181 to 111191 EBS 11510
- Upgrade BIApps 111181 to 111191 EBS 120
- Upgrade BIApps 111181 to 111191 EBS 1211
- Upgrade BIApps 111181 to 111191 EBS 1212
- Upgrade BIApps 111181 to 111191 EBS 1213
- Upgrade BIApps 111181 to 111191 EBS 122

Set BIAPPS.DDL_TABLE_LIST to:

```

W_WRKFC_EVT_AGE_F,W_WKFC_EVT_POW_F,W_WRKFC_EVT_MERGE_F,W_WRKFC_
EVT_MONTH_F,W_R
CRTMNT_APPL_A,W_RCRTMNT_HIRE_A,W_RCRTMNT_RQSTN_A_TMP2,W_RCRTMNT
_RQSTN_A

```

For the following PSFT upgrade Load plans:

- Upgrade BIApps 111181 to 111191 PSFT 90 HCM
- Upgrade BIApps 111181 to 111191 PSFT 91 HCM
- Upgrade BIApps 111181 to 111191 PSFT 92 HCM

Set BIAPPS.DDL_TABLE_LIST to:

```
W_TLNT_PROFILE_TYPE_D_TL,W_WRKFC_EVT_AGE_F,W_WKFC_EVT_POW_F,W_W
RKFC_EVT_MERGE_
F,W_WRKFC_EVT_MONTH_F,W_TLNT_PRFL_ACHVMNT_F,W_TLNT_PRFL_RQRMNT_
F,W_RCRTMNT_APP
L_A,W_RCRTMNT_HIRE_A,W_RCRTMNT_RQSTN_A_TMP2,W_RCRTMNT_RQSTN_A
```

- BIAPPS.DATASOURCE_NUM_ID

Set to 999, or if the value of WH_DATASOURCE_NUM_ID is different to 999, then use the value of WH_DATASOURCE_NUM_ID.

4. Save the load plan, and run the ETL.

Upgrade error due to incorrect datastore name in ETL_LOAD_DATE

This issue applies to incorrect datastore name during upgrade.

In Oracle BI Applications Release 8.1, the override task PLP_RecruitmentRequisitionAggregate_Load.W_RCRTMNT_RQSTN_A Update uses the incorrect datastore name W_WRKFC_EVT_AGE_F. The correct name is W_RCRTMNT_RQSTN_A. The load tracking step in W_ETL_LOAD_DATES use the incorrect datastore name. This affects upgrade for Oracle BI Applications 11.1.1.8.1 PB6 to 11.1.1.9.2. Before any Upgrade BIApps 111181 to 111191 load plan is executed, apply the workaround.

Workaround

1. Run the following command on the data warehouse schema:

```
UPDATE W_ETL_LOAD_DATES
SET TARGET_TABLE_NAME = 'W_RCRTMNT_RQSTN_A'
WHERE PACKAGE_NAME =
'PLP_PLP_RECRUITMENTREQUISITIONAGGREGATE_LOAD'
AND TARGET_TABLE_NAME <> 'W_RCRTMNT_RQSTN_A';
COMMIT;
```

BUYER_WID Not Resolved In W_RQSTN_LINE_COST_F with Fusion Applications Data Sources

In Oracle BI Applications Release 11.1.1.9.2, the SDE_FUSION_RequisitionLinesCostFact_UPG mapping does not populate the CREATED_ON_DT column.

As a result, for Fusion Applications data sources, W_RQSTN_LINE_COST_F.BUYER_WID is set to 0 after executing SIL_RequisitionLinesCostFact_UPG, which affects the data upgrade for BUYER_WID. To populate BUYER_WID correctly, perform the workaround.

Workaround

1. In ODI Studio, display the **Designer** tab.

2. Navigate to Upgrade > 'SDE_FUSION_V1_11.1.1.8.1_to_11.1.1.9.1_Upgrade' > SDE_FUSION_RequisitionLinesCostFact_UPG > Interfaces, and open the following interface:

```
SDE_FUSION_RequisitionLinesCostFact_UPG.W_RQSTN_LINE_COST_FS
_SQ_FSCMTOPMODELAM_PRCPORPUBLIC
```

3. Display the **Quick Edit** tab and expand **Mappings** section.
4. In 'Mappings' section at the bottom, add a column using+ green icon, as follows:

```
(1) Target Column Name: REQUISITIONDISTRIBUTIONCREATIONDATE
(2) Data Type: TIMESTAMP
(3) Length: 50
(4) Scale: 50
(5) Mapping Expression : A.RequisitionDistributionCreationDate
(6) Execute On : Staging Area
(7) Insert: keep it checked
(8) Update: keep it checked
```

5. Save the Interface.
6. In the same Interfaces folder, open the following interface:

```
SDE_FUSION_RequisitionLinesCostFact_UPG.W_RQSTN_LINE_COST_FS
```

7. In 'Mappings' section at the bottom, locate CREATED_ON_DT(which will be grayed out, because it is not mapped), and update as follows:

```
- Change Mapping Expression value of CREATED_ON_DT to
SQ_FSCMTOPMODELAM_PRCPORPUBLIC.RequisitionDistributionCreationDate
<New mapping Expression of CREATED_ON_DT>
SQ_FSCMTOPMODELAM_PRCPORPUBLIC.RequisitionDistributionCreationDate
- Execute On: Staging Area
- Insert : keep it checked
- Update : keep it checked
```

8. Save the Interface.
9. Navigate to SDE_FUSION_V1_11.1.1.8.1_to_11.1.1.9.1_Upgrade > SDE_FUSION_RequisitionLinesCostFact_UPG > Packages > SDE_FUSION_RequisitionLinesCostFact_UPG > Scenarios, locate the following scenario, and regenerate the scenario using the right click menu to make the changes that you made take effect:

```
SDE_FUSION_V1_11_1_1_8_1_TO_11_1_1_9_1_UPGRADE_SDE_FUSION_REQUISIT
IONLINESCOSTFACT_UPG
```

10. If necessary, correct your data as follows:
 - If you upgraded your existing Release 8.1 Oracle Business Analytics Warehouse to Release 9.2 before applying the Workaround steps above, then you must correct the data in Oracle Business Analytics Warehouse. To do so:
 - a. Run the following UPDATE SQL in Oracle Business Analytics Warehouse:

```
update W_ETL_LOAD_DATES set committed=0
where TARGET_TABLE_NAME IN ('W_EXPENSE_CC_FS', '
W_RQSTN_LINE_COST_F');
COMMIT;
```

- b. Run the next incremental load as usual.

This will populate only the W_RQSTN_LINE_COST_FS and W_RQSTN_LINE_COST_F tables in full load mode, while keeping other tables' records.

- If you did not upgrade your existing Release 8.1 Oracle Business Analytics Warehouse to Release 9.2 before applying the Workaround steps above, then no further updates are required.

Incremental ETL Fails Due to Buyer VO for Oracle Business Intelligence Applications

This issue applies to source versions Fusion 9 and 10.

When you upgrade from BI Apps 11.1.1.9.1 to 11.1.1.9.2, the incremental ETL fails with the following error:

```
ODI-1217: Session SDE_FUSION_V1_ADAPTOR_SDE_FUSION_EMPLOYEEEDIMENSION (2489501)
fails with return code 8000.
ODI-1226: Step Run SDE_FUSION_EmployeeDimension.W_EMPLOYEE_DS fails after 1
attempt(s). ODI-1240: Flow Run SDE_FUSION_EmployeeDimension.W_EMPLOYEE_DS fails
while performing a Loading operation. This flow loads target table
W_EMPLOYEE_DS.
ODI-1227: Task SrcSet0 (Loading) fails on the source ORACLE_BI connection
fusion.
Caused By: java.sql.SQLException: PreparedStatement execute failed
java.io.IOException: execute query failed[nQSError: 43113] Message returned
from OBIS.
[nQSError: 43119] Query Failed:
[nQSError: 77031] Error occurs while calling remote service ADFService11G.
Details: ADFException-3001: ViewObject
"FscmTopModelAM.PrcPoPublicViewAM.PoAgentPVO" not found.
```

This issue arises because OBIA uses a new VO in 11.1.1.9.2 release called FscmTopModelAM.PrcPoPublicViewAM.PoAgentPVO. There is an existing AllBuyerPVO shared by OTBI and OBIA now. However, the changes made for OTBI cause a duplicates issue in the ETL run.

Workaround

In place of BUYER VO – FscmTopModelAM.PrcPoPublicViewAM.AllBuyerPVO a new VO – FscmTopModelAM.PrcPoPublicViewAM.PoAgentPVO is used in OBIA for SDE_FUSION_EmployeeDimension from 11.1.1.9.2 onward.

During ETL update, FscmTopModelAM.PrcPoPublicViewAM.AllBuyerPVO has been replaced with new VO – FscmTopModelAM.PrcPoPublicViewAM.PoAgentPVO in SDE_FUSION_EmployeeDimension.W_EMPLOYEE_DS_SQ_EMPLOYEEES of SDE_FUSION_EmployeeDimension.

As this is a new VO used from BI Apps 11.1.1.9.2, you need to apply the FA 9.2 PB1 Patch (having FUSIONAPPS_PT.INTERPNXT_LINUX.X64_141205.1123.S)

Documentation Corrections

This information provides corrections and additions for documentation and Help for Oracle Business Intelligence Applications.

General Documentation Issues

This applies to Oracle Business Intelligence Applications guides.

- For Oracle BI Applications guides that are not included in the Release 11.1.1.9 documentation library, refer to the guides in the Release 11.1.1.8.1 documentation library at http://docs.oracle.com/cd/E51479_01/index.htm.

Errors in Oracle Business Intelligence Applications Configuration Guide

This issue applies to documentation errors in the Oracle Business Intelligence Applications Configuration guide.

- In Section B.2.118 How to Configure Scorecard Target Before Running ETL, the file name `file_purch_scorecard_target.csv` should be `file_purch_target_fs.csv`.
- Ignore Chapter 6 *Deploying the ODI Repository for Non-Oracle Source Databases*. Deployment of the ODI Repository for Non-Oracle Databases is not supported.

Additions to Oracle Business Intelligence Applications ETL Guide

Following has been added to the Oracle Business Intelligence Applications ETL guide:

- Addition to Chapter 1 ETL Overview, Section 'About Multi-Source Environments'.

Note: Applies to Business Intelligence Applications Consumer, version 11.1.1.7.1 and later.

If you are implementing multiple instances of the same source, you can find additional information about how to do this in 'Multi-Instance Source Support in BI Applications 11.1.1.x.1' (Support Note Doc ID 1633996.1) on My Oracle Support.

General Issues and Workarounds

Review these general issues and workarounds for Oracle BI Applications.

- [RCU Fails to Import BIACOMP Data for Version 11.1.1.9.1](#)
- [TABS in Sourcing Dashboard Do Not Show Report or Graph](#)
- [ETL Fails If lead_name Length Exceeds 100 Characters](#)
- [Data Store Corruption Issue for On-premises Customers Extracting From Fusion Application Sources](#)
- [NLS Regional Settings Not Save After Logout/Login](#)
- [Market Basket Analysis Facts and Dimensions Not Supported](#)
- [Ignore Non-Fusion Applications FSM Tasks](#)
- [Human Resources E-Business Suite Payroll Patches for Payroll Analytics](#)
- [Load Plan Schedules Missing After Regeneration](#)
- [Insufficient Memory During Load Plan Execution](#)

- [Deploying Multiple Instances of the Same Source](#)
- [SILOS_SIL_NEGOTIATIONLINEFACT - Error Creating Indexes With Duplicate Keys](#)
- [Non-supported Attributes and Metrics](#)
- [Cloud Data Source System: W_PURCH_VARIANCE_XACT_F Is Not Loaded](#)
- [Integrating Financial Analytics with Oracle Essbase for E-Business Suite](#)
- [Configuring UCM Download for Cloud Data Source Systems](#)
- [Soft Deletes Not Working With PeopleSoft PSFT91](#)
- [Correction to Column Precision Value W_PURCH_CHANGE_ORDER_F_DEL.DATASOURCE_NUM_ID](#)
- [ODI Map Trimming out Trailing Space from Column Data](#)
- [Task 'SDE_PSFT_90_ADAPTOR_SDE_PSFT_PERSISTEDSTAGE_TALENTMGMT_PRO_FILEITEMS' Fails During ETL](#)
- [Deployment of the ODI Repository on Non-Oracle Databases is Not Supported](#)
- [Data Extraction Error 'XXXDFFBIVO of type View Definition is not found'](#)
- [Invalid Filter in SDE_ORA_EmployeeExpenseCreditCardFact_Primary mapping for E-Business Suite Source Systems](#)
- [Enable Data Security for Peoplesoft Data Source](#)
- [BI Metadata Repository Issue in Fusion Applications for Security View](#)
- [Error During ATG Schema Upgrade](#)
- [Prerequisite Check of Operating System Certification for Windows 2012 is Failing](#)
- [Missing Soft Delete on Workforce Object](#)
- [Duplicate Record for Balancing Segments when Parent and Child are the Same in PSTREELEAF](#)
- [Headcount Movement Detailed Report Displays Error](#)

RCU Fails to Import BIACOMP Data for Version 11.1.1.9.1

This issue applies to users who are on Oracle BI Applications version 11.1.1.9.1.

The RCU import of the `obia_comp.dmp` (BIACOMP schema) file fails to import successfully due to a lack of database privileges assigned to the BIACOMP user. The database import log contains errors similar to these:

```
ORA-39083: Object type TABLE:"BIA_BIACOMP"."FND_PROFILE_LEVELS"
failed to create with error:
ORA-01950: no privileges on tablespace 'BIA_BIACOMP'
ORA-39112: Dependent object type
INDEX:"BIA_BIACOMP"."FND_PROFILE_LEVELS_U3" skipped, base object type
TABLE:"BIA_BIACOMP"."FND_PROFILE_LEVELS" creation failed
```

Workaround

1. Open the file `RCU_HOME/rcu/integration/biapps/sql/biapps_create_user.sql`.
2. Replace line `CREATE USER &&1 identified by &&2 default tablespace &&3 temporary tablespace &&4;` with `CREATE USER &&1 identified by &&2 default tablespace &&3 temporary tablespace &&4 quota unlimited on &&3;`

TABS in Sourcing Dashboard Do Not Show Report or Graph

Workaround

1. Login to the environment with Administrator user.
2. Browse the catalog to the Sourcing folder:
`/Shared/Procurement/Analytic Library/`
3. Find the Sourcing folder and click the **More** hyperlink below the Sourcing Folder and select **Permissions**.
4. Select the two check boxes **Apply permissions to Sub-folders** and **Apply permissions to item within folder** below the Permissions dialog box and click **OK**.

The logged in user should have at least one of these assigned roles to be able to access the content of the sourcing dashboard and reports in Release 9:

- BI Administrator Role
- Procurement Executive Analysis Duty
- Procurement Managerial Analysis Duty
- Procurement and Spend Executive for EBS
- Procurement and Spend Executive for PSFT
- Purchasing Buyer for EBS
- Purchasing Buyer for PSFT

ETL Fails If lead_name Length Exceeds 100 Characters

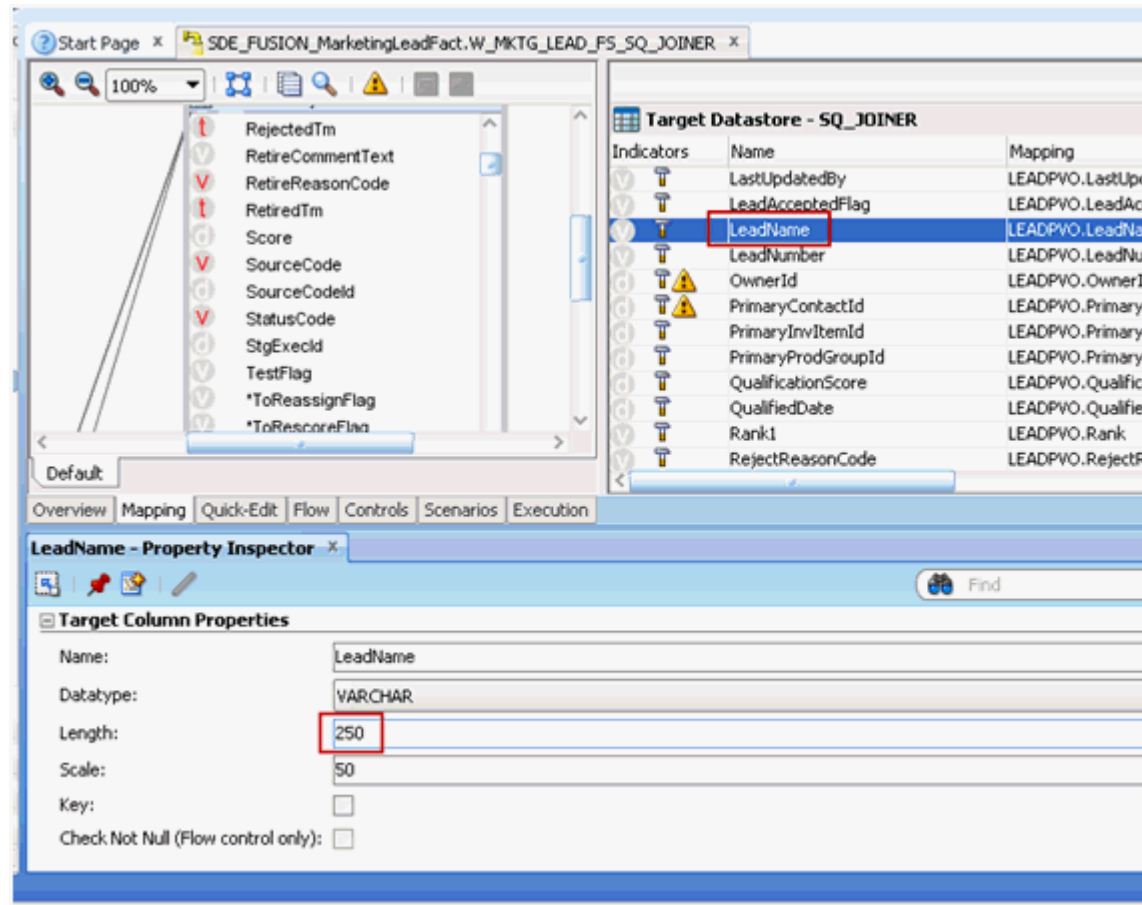
This issue applies to ETL failure.

If any lead is created with longer than a 100-character lead name, then the ETL fails.

Workaround

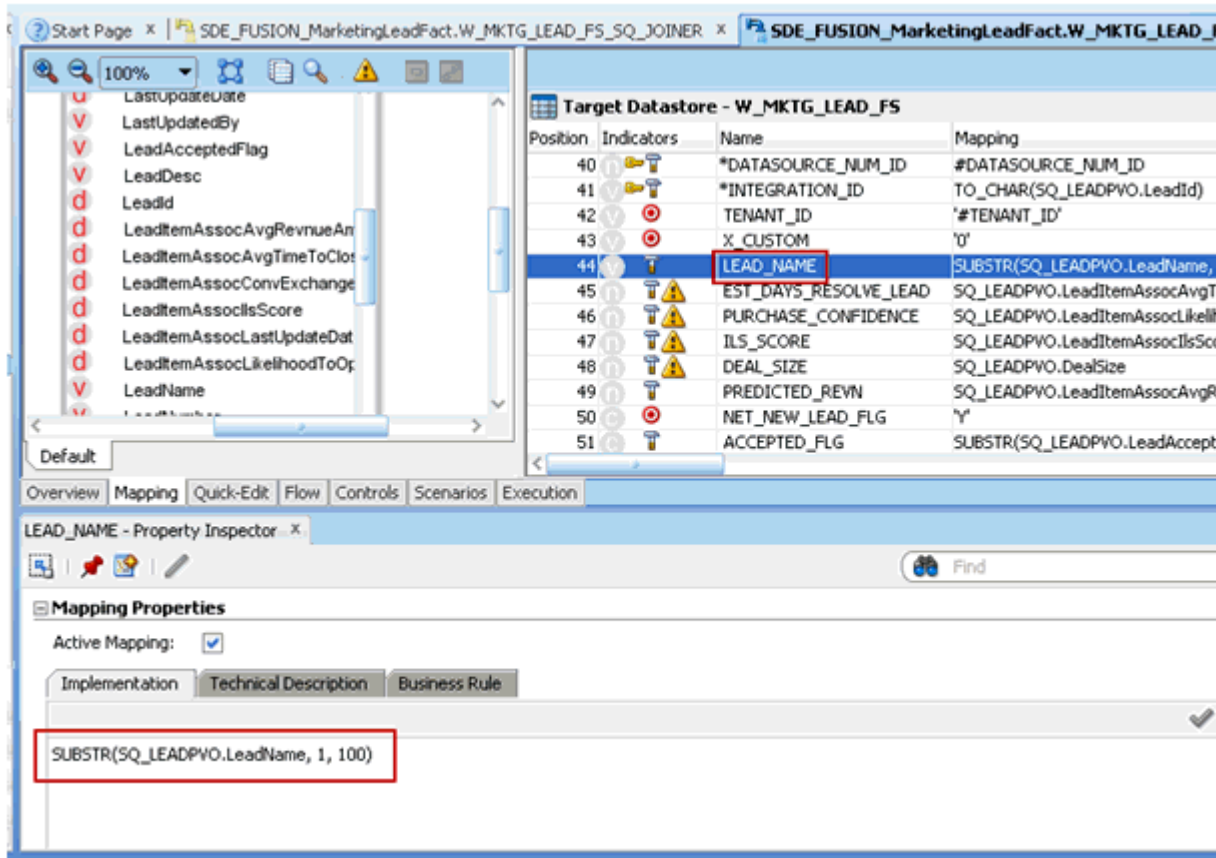
1. Connect to ODI Client.
2. Navigate to BI Apps Project, Mappings > `SDE_FUSION_V1_Adaptor > SDE_FUSION_MarketingLeadFact`.
3. Open `SDE_FUSION_MarketingLeadFact.W_MKTG_LEAD_FS_SQ_JOINER`.
Select **Interfaces**, then **Mapping** tab.

4. From **Target Datastore - SQ_JOINER** on right side window, highlight **LeadName**.
5. From **Property Inspector** on bottom window, change Length to 250 under Target Column Properties.

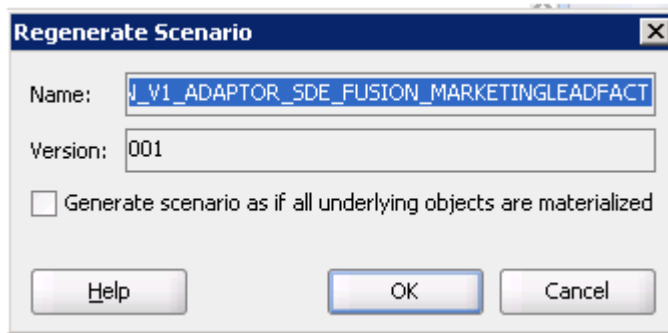


6. Save the change.
7. Next, open `SDE_FUSION_MarketingLeadFact.W_MKTG_LEAD_FS`.
Select **Interfaces**, then **Mapping** tab.
8. From **Target Datastore - W_MKTG_LEAD_FS** on right side window, highlight **LEAD_NAME**.
9. From **Property Inspector** on bottom window, change the Implementation value under Mapping Properties.

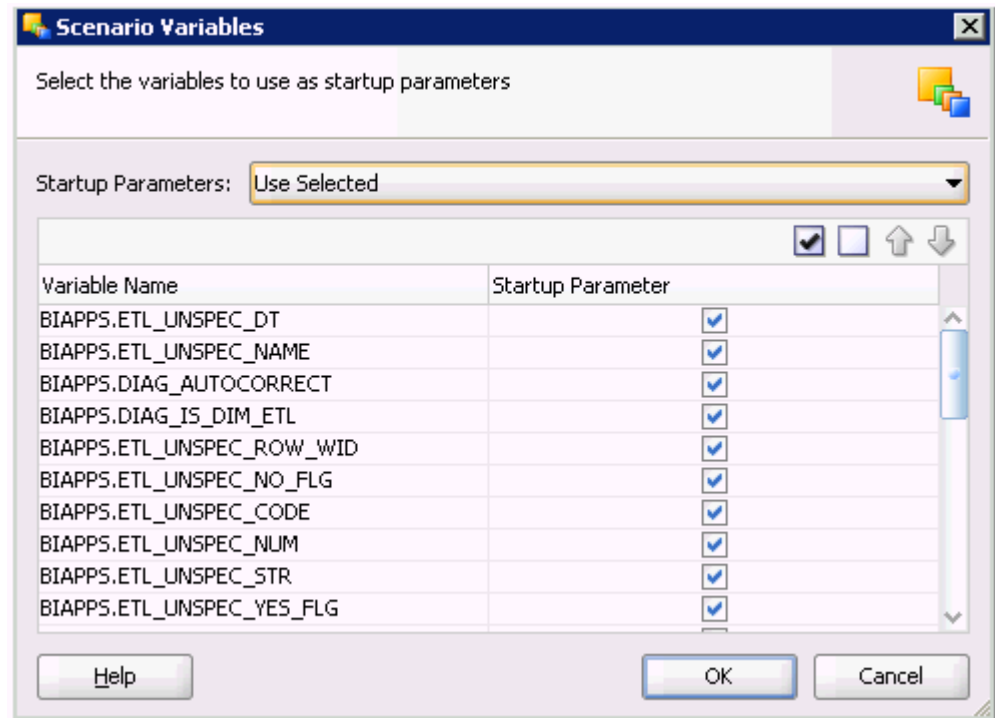
The old value is `SQ_LEADPVO.LeadName`. Change to `SUBSTR(SQ_LEADPVO.LeadName, 1, 100)`.



10. Save the changes.
11. Navigate to SDE_FUSION_MarketingLeadFact, Packages, SDE_FUSION_MarketingLeadFact, Scenarios, SDE_FUSION_V1_ADAPTOR_SDE_FUSION_MARKETINGLEADFACT Version 001, then right-click Regenerate.
12. Click OK.



13. In the **Scenario Variables** dialog, select the check marks for the BIAPPS . ETL Startup Parameters.



14. Click OK.

Data Store Corruption Issue for On-premises Customers Extracting From Fusion Application Sources

There is a known data store ID corruption issue for on-premises customers who are on Release 8.1 and have run BI Extender, then apply a Patch Bundle.

This issue is happening because the patch bundle also has out of the box data stores and mappings applicable to Cloud, which are getting corrupted because of the data store ID mismatch. Additionally, there is another issue where the Patch Bundle is overwriting the LP Component containing the BI Extender related Mappings.

So, the workaround is to disable all the Cloud data source mappings/scenarios in the Load Plan component and then add/enable the BI Extender related steps that were removed/overwritten by the Patch bundle into the Load Plan component, respectively, before generating the load plan.

You need to perform the workaround if you see a similar error after applying the patch bundle:

```
ODI-ERROR: Failed while extracting source tables from interface:
SDE_FUSION_BalancingSegmentDimension_Tree
```

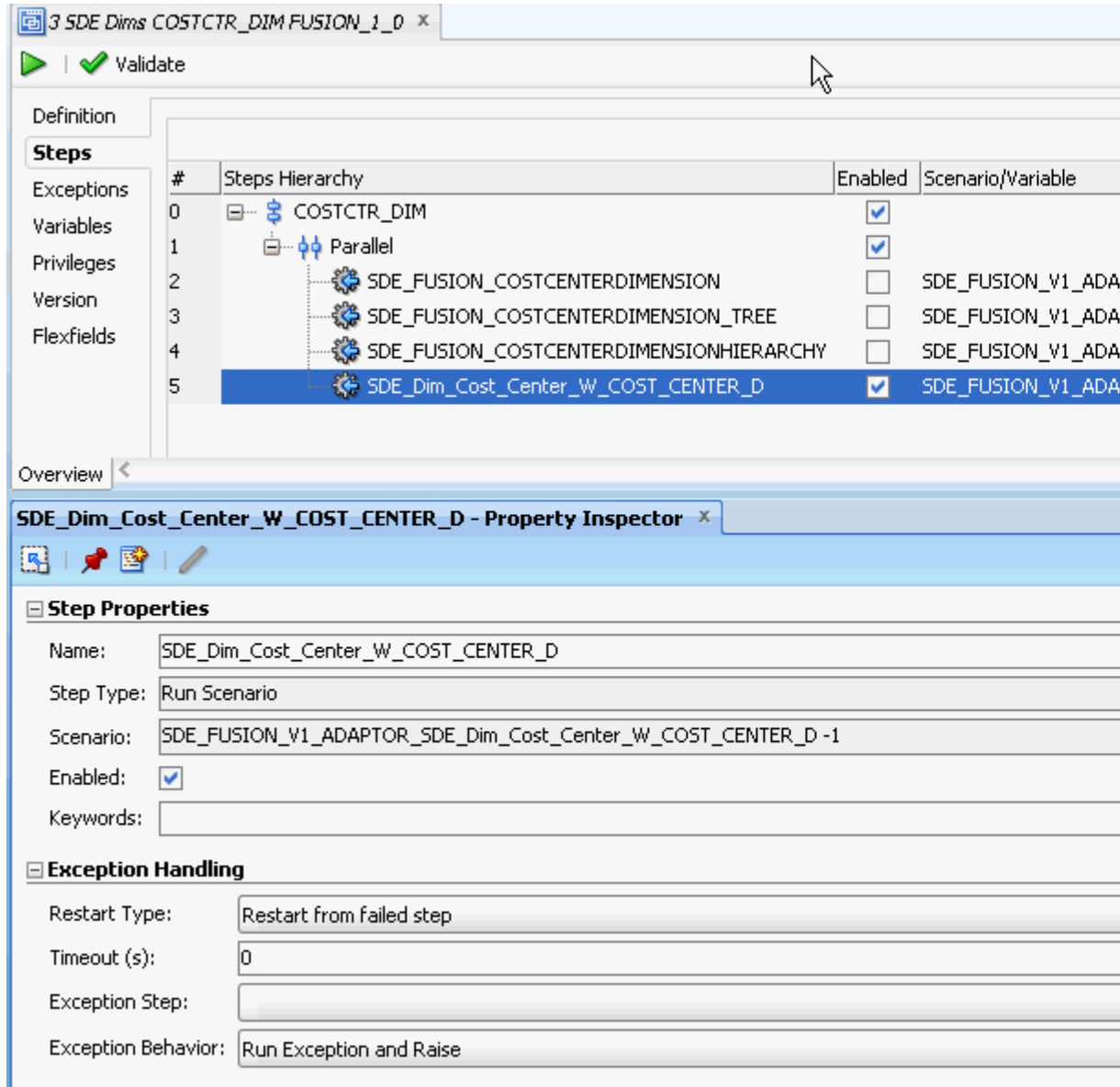
Workaround

1. Open Load Plan FUSION_1_0 under BIAPPS Load Plan, Load Plan Dev Components, then SDE.
2. Open LP Component step 3 SDE Dims COSTCTR_DIM FUSION_1_0 and disable 3 child steps under the parallel step SDE_FUSION_COSTCENTERDIMENSION, SDE_FUSION_COSTCENTERDIMENSION_TREE and

SDE_FUSION_COSTCENTERDIMENSIONHIERARCHY, and then save the Load Plan Component.

3. Check to see if parallel step(s) SDE_Dim_Cost_Center_W_COST_CENTER_D and SDE_Dim_Cost_Center_W_COST_CENTER_DH relating to BI Extender are available in LP Component step 3 SDE Dims COSTCTR_DIM FUSION_1_0.

If not add and enable the same.



4. Open LP Component step 3 SDE Dims BALSEG_DIM FUSION_1_0 and disable 3 child steps under the parallel step SDE_FUSION_BALANCINGSEGMENTDIMENSION, SDE_FUSION_BALANCINGSEGMENTDIMENSION_TREE and SDE_FUSION_BALANCINGSEGMENTDIMENSIONHIERARCHY and save Load Plan Component.
5. Check to see if parallel steps SDE_Dim_Balancing_Segment_W_BALANCING_SEGMENT_D and

SDE_Dim_Balancing_Segment_W_BALANCING_SEGMENT_DH relating to BI Extender are available in Load Plan Component step 3 SDE Dims BALSEG_DIM FUSION_1_0.

If not add and enable them. See the previous figure.

6. Open LP Component step 3 SDE Dims NAT_ACCT_DIM FUSION_1_0 and disable 3 child steps under the parallel step SDE_FUSION_NATURALACCOUNTDIMENSION, SDE_FUSION_NATURALACCOUNTDIMENSION_TREE and SDE_FUSION_NATURALACCOUNTDIMENSIONHIERARCHY and then save the Load Plan Component.

7. Check to see if parallel step(s) SDE_Dim_Natural_Account_Segment_W_NATURAL_ACCOUNT_D and SDE_Dim_Natural_Account_Segment_W_NATURAL_ACCOUNT_DH relating to BI Extender are available in Load Plan Component step 3 SDE Dims NAT_ACCT_DIM FUSION_1_0.

If not add and enable them. See the previous figure.

8. Open LP Component step 3 SDE Dims GLSEG_DIM FUSION_1_0 and enable the parallel step (which starts with SDE_FUSION...) and disable all the child steps under the parallel step and save the Load Plan Component.

3 SDE Dims GLSEG_DIM FUSION_1_0 x

Validate

Definition

Steps

Exceptions

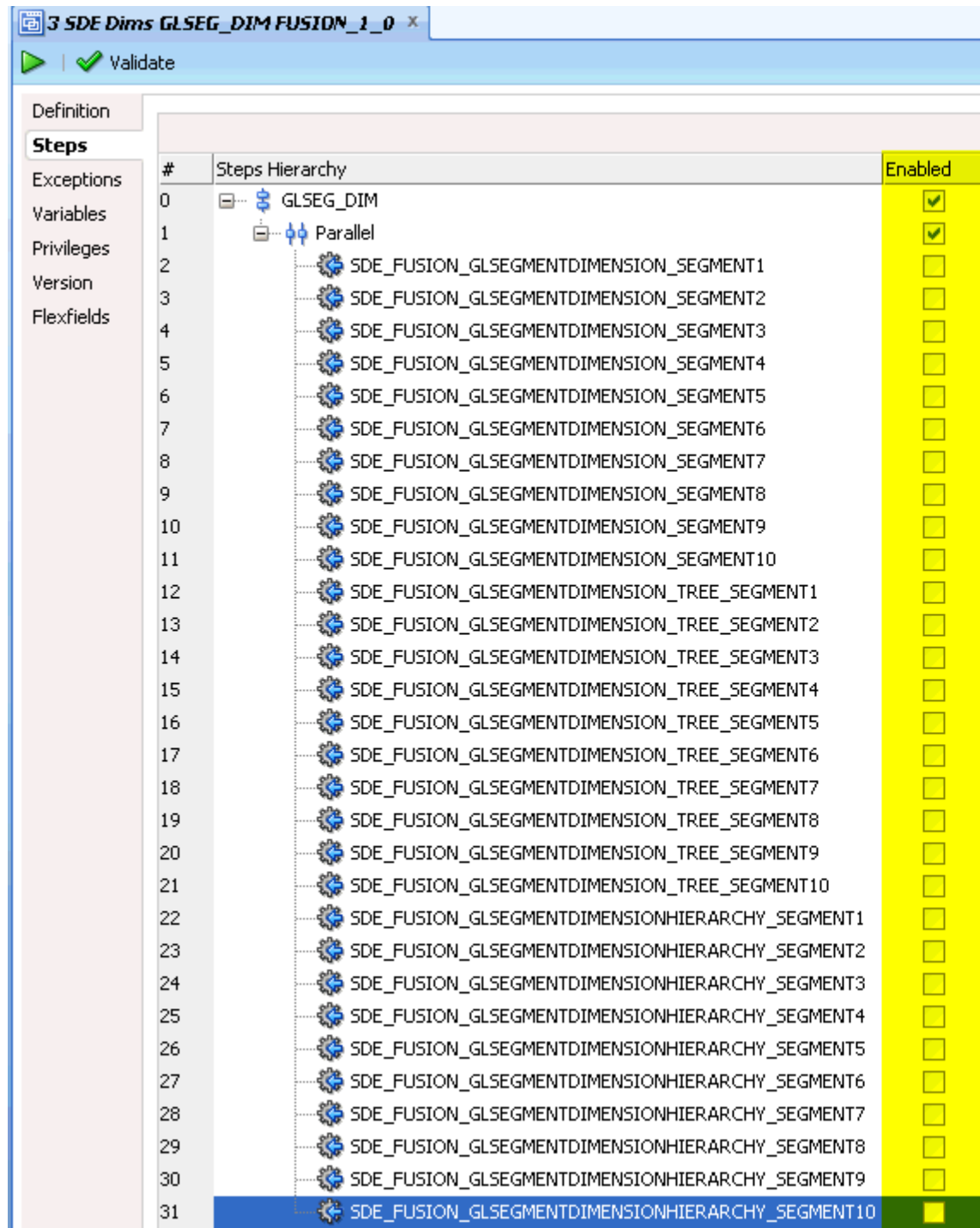
Variables

Privileges

Version

Flexfields

#	Steps Hierarchy	Enabled	Scenario
0	GLSEG_DIM	<input checked="" type="checkbox"/>	
1	Parallel	<input type="checkbox"/>	
2	SDE_FUSION_GLSEGMENTDIMENSION_SEGMENT1	<input checked="" type="checkbox"/>	SDE_FU
3	SDE_FUSION_GLSEGMENTDIMENSION_SEGMENT2	<input checked="" type="checkbox"/>	SDE_FU
4	SDE_FUSION_GLSEGMENTDIMENSION_SEGMENT3	<input checked="" type="checkbox"/>	SDE_FU
5	SDE_FUSION_GLSEGMENTDIMENSION_SEGMENT4	<input checked="" type="checkbox"/>	SDE_FU
6	SDE_FUSION_GLSEGMENTDIMENSION_SEGMENT5	<input checked="" type="checkbox"/>	SDE_FU
7	SDE_FUSION_GLSEGMENTDIMENSION_SEGMENT6	<input checked="" type="checkbox"/>	SDE_FU
8	SDE_FUSION_GLSEGMENTDIMENSION_SEGMENT7	<input checked="" type="checkbox"/>	SDE_FU
9	SDE_FUSION_GLSEGMENTDIMENSION_SEGMENT8	<input checked="" type="checkbox"/>	SDE_FU
10	SDE_FUSION_GLSEGMENTDIMENSION_SEGMENT9	<input checked="" type="checkbox"/>	SDE_FU
11	SDE_FUSION_GLSEGMENTDIMENSION_SEGMENT10	<input checked="" type="checkbox"/>	SDE_FU
12	SDE_FUSION_GLSEGMENTDIMENSION_TREE_SEGMENT1	<input checked="" type="checkbox"/>	SDE_FU
13	SDE_FUSION_GLSEGMENTDIMENSION_TREE_SEGMENT2	<input checked="" type="checkbox"/>	SDE_FU
14	SDE_FUSION_GLSEGMENTDIMENSION_TREE_SEGMENT3	<input checked="" type="checkbox"/>	SDE_FU
15	SDE_FUSION_GLSEGMENTDIMENSION_TREE_SEGMENT4	<input checked="" type="checkbox"/>	SDE_FU
16	SDE_FUSION_GLSEGMENTDIMENSION_TREE_SEGMENT5	<input checked="" type="checkbox"/>	SDE_FU
17	SDE_FUSION_GLSEGMENTDIMENSION_TREE_SEGMENT6	<input checked="" type="checkbox"/>	SDE_FU
18	SDE_FUSION_GLSEGMENTDIMENSION_TREE_SEGMENT7	<input checked="" type="checkbox"/>	SDE_FU
19	SDE_FUSION_GLSEGMENTDIMENSION_TREE_SEGMENT8	<input checked="" type="checkbox"/>	SDE_FU
20	SDE_FUSION_GLSEGMENTDIMENSION_TREE_SEGMENT9	<input checked="" type="checkbox"/>	SDE_FU
21	SDE_FUSION_GLSEGMENTDIMENSION_TREE_SEGMENT10	<input checked="" type="checkbox"/>	SDE_FU
22	SDE_FUSION_GLSEGMENTDIMENSIONHIERARCHY_SEGMENT1	<input checked="" type="checkbox"/>	SDE_FU
23	SDE_FUSION_GLSEGMENTDIMENSIONHIERARCHY_SEGMENT2	<input checked="" type="checkbox"/>	SDE_FU
24	SDE_FUSION_GLSEGMENTDIMENSIONHIERARCHY_SEGMENT3	<input checked="" type="checkbox"/>	SDE_FU
25	SDE_FUSION_GLSEGMENTDIMENSIONHIERARCHY_SEGMENT4	<input checked="" type="checkbox"/>	SDE_FU
26	SDE_FUSION_GLSEGMENTDIMENSIONHIERARCHY_SEGMENTS5	<input checked="" type="checkbox"/>	SDE_FU
27	SDE_FUSION_GLSEGMENTDIMENSIONHIERARCHY_SEGMENT6	<input checked="" type="checkbox"/>	SDE_FU
28	SDE_FUSION_GLSEGMENTDIMENSIONHIERARCHY_SEGMENT7	<input checked="" type="checkbox"/>	SDE_FU
29	SDE_FUSION_GLSEGMENTDIMENSIONHIERARCHY_SEGMENT8	<input checked="" type="checkbox"/>	SDE_FU
30	SDE_FUSION_GLSEGMENTDIMENSIONHIERARCHY_SEGMENT9	<input checked="" type="checkbox"/>	SDE_FU
31	SDE_FUSION_GLSEGMENTDIMENSIONHIERARCHY_SEGMENT10	<input checked="" type="checkbox"/>	SDE_FU



- Finally, add all the GL Segment related BI Extender mapping steps into 3 SDE Dims GLSEG_DIM FUSION_1_0, similar to what is being done in steps 3, 5, and 7.

Note: Number of segments to Add depends on how many non-qualified segments you have enabled and extended in Fusion Financials.

For example, if you have enabled GL Segment1 and GL Segment2, then you will need to add 4 new steps (2 for dimensions and 2 for Hierarchy) as shown below:

```
SDE_Dim_GL_Segment1_W_GL_SEGMENT_D  
SDE_Dim_GL_Segment1_W_GL_SEGMENT_DH  
SDE_Dim_GL_Segment2_W_GL_SEGMENT_D  
SDE_Dim_GL_Segment2_W_GL_SEGMENT_DH
```

10. After applying the above changes to the Load Plan, regenerate the Load Plan before executing the same.

NLS Regional Settings Not Save After Logout/Login

This issue applies to customers who want to use Oracle BI Applications Configuration Manager and FSM in non-English languages.

The changes in task Preferences > Regional or Preferences > Language are not saved properly after you log out the application and log in again.

Workaround

After logging in, if the preference settings (for example, UI language, number format, date format, time format, time-zone) are not set to the values as required, then users can go to task Preferences > Regional or Preferences > Language, change the preferences as required and save, and then continue to use other tasks without logging out.

Market Basket Analysis Facts and Dimensions Not Supported

Due to performance issues, Market Basket analysis related facts and dimensions are not supported.

List of logical facts not supported:

- - Fact - CRM - Next Order Same Account
- - Fact - CRM - Next Order Same Contact
- - Fact - CRM - Order Item Same
- - Fact - CRM - Product Affinity

List of logical dimensions not supported:

- - Dim - Market Basket Product
- - Dim - Next Product Purchased

Workaround

There is no workaround for this issue.

Ignore Non-Fusion Applications FSM Tasks

In FSM, the Configure Enterprise List task might be erroneously displayed in non-Fusion Applications Implementation Projects, and should be ignored in that context.

Human Resources E-Business Suite Payroll Patches for Payroll Analytics

This issue applies to Human Resources Analytics Payroll Subject Area for E-Business Suite.

If you are implementing Human Resources Analytics Payroll Subject Area for E-Business Suite, then it is mandatory to follow the E-Business Suite Payroll patching policy mentioned in My Oracle Support Note 295406.1 *Mandatory Family Pack / Rollup Patch (RUP) levels for Oracle Payroll*.

Load Plan Schedules Missing After Regeneration

This issue applies to load plan regeneration.

After Load Plan is regenerated in Oracle BI Applications Configuration Manager, the Load Plan schedule is missing.

Workaround

Before regenerating a Load Plan, remove all existing schedules and recreate them after regeneration is complete.

Insufficient Memory During Load Plan Execution

This issue applies to load plan execution.

If you are generate a Load Plan with many fact groups and the Load Plan generation 'hangs' while reporting the status 'In Progress', then increase the memory.

Workaround

1. Restart BI Server and try to generate the Load Plan again.

If you get the same issue, performs Steps 2 and 3 below.

2. Increase BI Server memory settings to 3GB (-Xmx3072m) in <MWHome>/user_projects/domains/bifoundation_domain/bin/setBIAppsDomainEnv.sh.
3. Restart BI Server from Administration Console.

For example:

```
if [ "${SVR_GRP}" = "obi" ] ; then
  # BIA Managed Server : set max heap to 2GB
  if [ "${JAVA_VENDOR}" = "Sun" ] ; then
    SERVER_MEM_ARGS="-Xms512m -Xmx3072m -XX:MaxPermSize=1024m"
    export SERVER_MEM_ARGS
  fi
  if [ "${JAVA_VENDOR}" = "Oracle" ] ; then
    SERVER_MEM_ARGS="-Xms512m -Xmx3072m -XX:MaxPermSize=1024m"
    export SERVER_MEM_ARGS
  fi
fi
```

4. Regenerate and re-execute the Load Plan.

Deploying Multiple Instances of the Same Source

Applies to Business Intelligence Applications Consumer, version 11.1.1.7.1 and later.

If you are implementing multiple instances of the same source, then you can find additional information about how to do this in 'Multi-Instance Source Support in BI Applications 11.1.1.x.1' (Support Note Doc ID 1633996.1) on My Oracle Support.

SILOS_SIL_NEGOTIATIONLINEFACT - Error Creating Indexes With Duplicate Keys

This issue applies to Procurement and Spend Analytics with Fusion Applications OLTP Source V11.1.9.2.

Issue: SILOS_SIL_NEGOTIATIONLINEFACT-Error creating indexes with duplicate keys found.

Workaround

1. In ODI Studio, navigate to the SDE adaptor and open the folder **SDE_FUSION_NegLineFact**, and open the main interface **SDE_FUSION_NegLineFact.W_NEG_LINES_FS**.
2. Navigate to **Quick Edit**, expand the **Filters** section, and add a new filter as the follows:

```
TO_CHAR(COALESCE(SQ_NEG_LINE.LineNumber,0)) <> '0'
```

Mark the filter executed on Staging.

3. Save the interface and regenerate the scenario.

Note: If the EAT has already been executed, run the following command to remove the duplicate records:

```
delete from w_neg_lines_f where neg_line_num = 0 and created_on_dt  
is null
```

Non-supported Attributes and Metrics

Full DW Refresh is enforced on the Valuation Fact-Group (VALUATION_FG) on these ETL Adapters.

E-Business Suite:

```
SDE_ORA11510_Adaptor  
SDE_ORAR12_Adaptor  
SDE_ORAR1211_Adaptor  
SDE_ORAR1212_Adaptor  
SDE_ORAR1213_Adaptor  
SDE_ORAR122_Adaptor
```

JDE:

```
SDE_JDEE1_90_Adaptor  
SDE_JDEE1_91_Adaptor
```

Peoplesoft:

SDE_PSFT_90_Adaptor
 SDE_PSFT_91_Adaptor
 SDE_PSFT_92_Adaptor

Consequently, history on underlying DW tables is not available on these ETL Adapters:

W_CST_ONHAND_DAILY_F
 W_CST_ONHAND_ACC_DAILY_F
 W_CST_INTRANSIT_DAILY_F
 W_CST_INTRAN_ACC_DAILY_F

Consequently, the following Presentation Metrics are not supported on above listed ETL Adapters:

"Costing - Inventory Valuation"..Fact - Costing - Inventory Valuation".Accounted Onhand Quantity Year Ago"
 "Costing - Inventory Valuation"..Fact - Costing - Inventory Valuation".Accounted Onhand Amount Year Ago"
 "Costing - Inventory Valuation"..Fact - Costing - Inventory Valuation".Costed Onhand Quantity Year Ago"
 "Costing - Inventory Valuation"..Fact - Costing - Inventory Valuation".Costed Onhand Amount Year Ago"
 "Costing - Inventory Valuation"..Fact - Costing - Inventory Valuation".Accounted In transit Quantity Year Ago"
 "Costing - Inventory Valuation"..Fact - Costing - Inventory Valuation".Accounted In transit Amount Year Ago"
 "Costing - Inventory Valuation"..Fact - Costing - Inventory Valuation".Costed In transit Quantity Year Ago"
 "Costing - Inventory Valuation"..Fact - Costing - Inventory Valuation".Costed In transit Amount Year Ago"
 "Costing - Inventory Valuation"..Fact - Costing - Inventory Valuation".Total Inventory Value Costed Year Ago"
 "Costing - Inventory Valuation"..Fact - Costing - Inventory Valuation".Total Inventory Value Accounted Year Ago"
 "Costing - Inventory Valuation"..Fact - Costing - Inventory Valuation".Chg % Total Value Accounted Year Ago"
 "Costing - Inventory Valuation"..Fact - Costing - Inventory Valuation".Chg % Total Value Costed Year Ago"
 "Costing - Inventory Valuation"..Fact - Costing - Inventory Valuation".Chg Total Inventory Accounted Value Month Ago"
 "Costing - Inventory Valuation"..Fact - Costing - Inventory Valuation".Chg Total Inventory Costed Value Month Ago"
 "Costing - Inventory Valuation"..Fact - Costing - Inventory Valuation".Total Inventory Quantity Costed Year Ago"
 "Costing - Inventory Valuation"..Fact - Costing - Inventory Valuation".Total Inventory Quantity Accounted Year Ago"
 "Costing - Inventory Valuation"..Fact - Costing - Inventory Valuation".Chg % Total Quantity Costed Year Ago"
 "Costing - Inventory Valuation"..Fact - Costing - Inventory Valuation".Chg % Total Quantity Accounted Year Ago"

On Peoplesoft data source the following Dimension Attributes are not supported

"Lot".Best By Date"
 "Lot".color"
 "Lot".Length"
 "Lot".Length UOM"
 "Lot".Thickness"
 "Lot".Thickness UOM"
 "Lot".Volume"
 "Lot".colume UOM"
 "Lot".Width"
 "Lot".Width UOM"

"Movement Type"."Transaction Action Code"
 "Movement Type"."Transaction Action Description"

On Peoplesoft data sources, the following Metrics are not supported:

BMM: "Core"."Fact - Supply Chain - Inventory Transaction"."Material Quantity"
 BMM: "Core"."Fact - Supply Chain - Inventory Transaction"."Material Amount"
 BMM: "Core"."Fact - Supply Chain - Inventory Transaction"."Total Material Amount Last 365 Days"
 Presentation: "Inventory - Transactions".. "Fact - Inventory Transactions"."Material Quantity"
 Presentation: "Costing - Item Cost".. "Fact - Costing - Item Cost"."Profit In Inventory"
 Presentation: "Costing - Item Cost".. "Fact - Costing - Item Cost"."Percentage of Profit In Inventory"
 BMM: "Core"."Fact - Supply Chain - Inventory Balance"."In Transit Quantity"
 BMM: "Core"."Fact - Supply Chain - Inventory Balance"."Receiving Quantity"
 BMM: "Core"."Fact - Supply Chain - Inventory Balance"."Allocated Quantity"
 BMM: "Core"."Fact - Supply Chain - Inventory Balance"."Un Allocated Quantity"
 BMM: "Core"."Fact - Supply Chain - Inventory Balance"." # of Products Requiring Reorder"
 BMM: "Core"."Fact - Supply Chain - Inventory Balance"."Value Only Amount"
 BMM: "Core"."Fact - Supply Chain - Inventory Balance"."Value Transfer Amount"
 BMM: "Core"."Fact - Supply Chain - Inventory Balance"."Returned Quantity"
 BMM: "Core"."Fact - Supply Chain - Inventory Balance"."Replenishment Quantity"
 BMM: "Core"."Fact - Supply Chain - Inventory Balance"." Inspection Consignment Quantity"
 BMM: "Core"."Fact - Supply Chain - Inventory Balance"."Reorder Point"
 BMM: "Core"."Fact - Supply Chain - Inventory Balance"." Inspection Amount"
 BMM: "Core"."Fact - Supply Chain - Inventory Balance"."Returned Amount"
 BMM: "Core"."Fact - Supply Chain - Inventory Balance"."Replenishment Amount"
 BMM: "Core"."Fact - Supply Chain - Inventory Balance"."Inspection Consignment Amount"
 BMM: "Core"."Fact - Supply Chain - Inventory Balance"."WIP Amount"
 BMM: "Core"."Fact - Supply Chain - Inventory Balance"." Returned Quantity Year Ago"
 BMM: "Core"."Fact - Supply Chain - Inventory Balance"." Chg Returned Quantity Year Ago"
 BMM: "Core"."Fact - Supply Chain - Inventory Balance"." Chg Returned Quantity % Year Ago"
 Presentation: "Facts - Inventory Balance"."In Transit Quantity"
 Presentation: "Facts - Inventory Balance"."Receiving Quantity"
 Presentation: "Facts - Inventory Balance"."Allocated Quantity"
 Presentation: "Facts - Inventory Balance"."Un Allocated Quantity"
 Presentation: "Facts - Inventory Balance"."Replenishment Quantity"
 Presentation: "Facts - Inventory Balance"."Inspection Consignment Quantity"
 Presentation: "Facts - Inventory Balance"."# of Products Requiring Reorder"

On Peoplesoft data sources, the following Presentation Subject Areas are not supported:

Inventory - Cycle Count
Inventory - Bill of Materials

On Peoplesoft data sources there is changed behavior on the following Attribute:

"Inventory - Transactions".. "Inventory Details". "Debit Credit Flag"
"Inventory - Customer and Supplier Returns".. "Inventory
Details". "Debit Credit Flag"

An additional value B represents Bin-to-Bin transfers. It will show up as neither Debits or Credits in the reports.

On Peoplesoft data sources, the following Logical Tables and corresponding Dimensions are not supported:

Dim - Balancing Segment
Dim - Product Transaction Type (Stays deprecated)
Dim - Cost Valuation Unit

In addition, note the following:

- On Peoplesoft data sources, `CST_COST_ELEMENT` and `CST_COST_ELEMENT_TYPES` source domains have an additional grain of `SETID`. Hence, these are to be setup in CM with a pattern of `COST_ELEMENT~SETID`

- Notes on behavior of specific Attributes/Metrics on Peoplesoft data sources:

BMM: "Core"."Fact - Supply Chain - Inventory Aging"."Days In Inventory" (affects of Date Received)

The "Days In Inventory" metric is defined as the number of days between the Date Received and the date of data extraction. The Date Received, for PeopleSoft Inventory, is retrieved from the latest Receipt Header record which matches a particular Physical Inventory record. If no Receipt Header can be found, then the Staged Date of the Physical Inventory is used. If there is no associated Receipt Header and no Staged Date for a Physical Inventory record, then Days In Inventory will not be populated for that record.

- BMM: "Core"."Fact - Supply Chain - Inventory Aging"."Days Left Expiry" and "Days Since Expired" (affects of Date Received)

The "Days Left Expiry" and "Days Since Expired" metrics are defined as the days between the Expiration Date for a Physical Inventory item and the date of data extraction. For LOT controlled items, the Expiration Date is derived from the lot control record. For other items, the Expiration Date is derived by adding the item's Shelf Life to the Date Received.

- Plant Location:

In the PeopleSoft adaptor, Plant Locations are retrieved for every Business Unit that is marked with a Business Unit Type of "PLNT". Only "PLNT" type Business Units are represented in the Plant Location Dimension.

Cloud Data Source System: W_PURCH_VARIANCE_XACT_F Is Not Loaded

This issue applies to the Cloud data source system.

Purchase Price Variance for Cloud Data Source systems are not supported. Therefore, W_PURCH_VARIANCE_XACT_F is not loaded in Cloud Data source systems for any Purchase Price Variance related data.

Note: Purchase Price Variance is available for the other adapters including E-Business Suite, People Soft FT, and Fusion.

Integrating Financial Analytics with Oracle Essbase for E-Business Suite

For information about integrating Financial Analytics with Oracle Essbase, refer to document *Integrating OBI Financial Analytics with Oracle Essbase for Oracle EBS* (Doc ID 1954381.1.) on My Oracle Support (support.oracle.com).

Configuring UCM Download for Cloud Data Source Systems

Use these instructions to configure UCM download for Cloud data source systems.

Before you start the UCM download (as described in the Task Register file system location for download and staging the files from FA UCM server in ODI studio, see Register the Fusion Applications Source in *Oracle Business Intelligence Applications Installation Guide*), ensure that you complete the steps mentioned in the Workaround.

Workaround

1. Edit the BIAPPSConfig.properties file in the following location:

```
<middleware_home>/user_projects/domains/bifoundation_domain/  
config/fmwconfig/biinstances/coreapplication/
```

2. Add the configuration tag EXTERNAL_STORAGE_TYPE=UCM.

Soft Deletes Not Working With PeopleSoft PSFT91

This issue applies to PeopleSoft PSFT91.

The Soft Delete feature is not working for Amt Based Revenue, for example, expenditure types of BILL%, CNTR%.

Workaround

There is no workaround for this issue.

Correction to Column Precision Value W_PURCH_CHANGE_ORDER_F_DEL.DATASOURCE_NUM_ID

This issue applies to correcting the column precision value.

Precision value for number data type Column DATASOURCE_NUM_ID is wrongly set in the W_PURCH_CHANGE_ORDER_F_DEL table.

Workaround

1. In ODI Studio, navigate to Designer > Models > Oracle BI Applications folder.
2. Right click and open Oracle BI Applications > Delete folder > Open the W_PURCH_CHANGE_ORDER_F_DEL table.
3. Edit the table. Go to Columns section and change the DATASOURCE_NUM_ID column logical length to 10 and change the scale to 0.
4. Save the model and close.

ODI Map Trimming out Trailing Space from Column Data

When moving data from flat file (delimited type) to a table in Oracle Business Analytics Warehouse using Oracle Data Integrator, if the map run trims out the trailing space from the column data, then apply the workaround.

Workaround

1. Download ODI patch file 18408469 from the Oracle Automated Release Updates (ARU) website.
2. Close all opened ODI Clients and any running ODI Agents.
3. To preserve trailing spaces in column data, after the successful patch application, connect to the ODI repository using ODI Client and change the File Data server JDBC URL to the URL below:

```
jdbc:snps:dbfile?ENCODING=UTF-8&NO_RTRIM_DEL_STRING=TRUE
```

4. Save the changes and re-run the ODI task to verify the fix.

Task**'SDE_PSFT_90_ADAPTOR_SDE_PSFT_PERSISTEDSTAGE_TALENTMGMT_PROFILEITEMS' Fails During ETL**

During ETL, the task

'SDE_PSFT_90_ADAPTOR_SDE_PSFT_PERSISTEDSTAGE_TALENTMGMT_PROFIL EITEMS' fails with these errors.

```
ODI-1217: Session
SDE_PSFT_90_ADAPTOR_SDE_PSFT_PERSISTEDSTAGE_TALENTMGMT_PROFILEITEMS (587500)
fails with return code 904.
ODI-1226: Step
SDE_PSFT_PersistedStage_TalentMgmt_ProfileItems.W_PSFT_PRFL_ITEM_PS fails after
1 attempt(s).
ODI-1240: Flow
SDE_PSFT_PersistedStage_TalentMgmt_ProfileItems.W_PSFT_PRFL_ITEM_PS fails while
performing a Loading operation. This flow loads target table
W_PSFT_PRFL_ITEM_PS.
ODI-1227: Task SrcSet0 (Loading) fails on the source ORACLE connection
HCM_SOURCE.
Caused By: java.sql.SQLException: ORA-00904:
"W_PSFT_PRFL_ITEM_PS_TMP"."MINOR_DESCR": invalid identifier
```

Workaround

1. In ODI Studio, expand the **SDE_PSFT_90_Adaptor** folder.
2. Open the interface
SDE_PSFT_PersistedStage_TalentMgmt_ProfileItems.W_PSFT_PRFL_ITEM_PS_SQ_PS_JPM_JP_ITEMS.
3. Using the **Quick Edit** tab, map the **MAJOR_DESCR** and **MINOR_DESCR** columns as follows:

```
MAJOR_DESCR = JPM_JP_ITEMS.MAJOR_DESCR  
MINOR_DESCR = JPM_JP_ITEMS.MINOR_DESCR
```

4. Open the interface
SDE_PSFT_PersistedStage_TalentMgmt_ProfileItems.W_PSFT_PRFL_ITEM_PS.
5. Using the **Quick Edit** tab, map the **MAJOR_DESCR** and **MINOR_DESCR** columns as follows:

```
MAJOR_DESCR = W_PSFT_PRFL_ITEM_PS_TMP.MAJOR_DESCR  
MINOR_DESCR = W_PSFT_PRFL_ITEM_PS_TMP.MINOR_DESCR
```

6. Save both interfaces and regenerate the scenario.

Deployment of the ODI Repository on Non-Oracle Databases is Not Supported

This issue applies to deployment of the ODI repository on non-Oracle databases.

This release does not support the deployment of the ODI Repository on non-Oracle source databases as documented in Chapter 6 'Deploying the ODI Repository for Non-Oracle Source Databases' of *Oracle Business Intelligence Applications Installation Guide*. You should ignore Chapter 6 'Deploying the ODI Repository for Non-Oracle Source Databases'.

Workaround

There is no workaround for this issue.

Data Extraction Error 'XXXDFFBIVO of type View Definition is not found'

This issue applies to Fusion Applications on-premises data sources.

If during load plan execution you see the error message `XXXDFFBIVO of type View Definition is not found`(or similar), then you must check your Flexfield deployment. You might have an incomplete flexfield setup.

Workaround

Make sure that your flexfield setup is complete.

Invalid Filter in SDE_ORA_EmployeeExpenseCreditCardFact_Primary mapping for E-Business Suite Source Systems

This issue applies to E-Business Suite source systems.

The `SDE_ORA_EmployeeExpenseCreditCardFact_Primary` mapping contains an invalid filter for incremental loads. Primary mappings should extract all records

without filtering any records, even in incremental load. If you enable the Soft Delete feature by setting `SOFT_DELETE_FEATURE_ENABLED=Y` and `SOFT_DELETE_PREPROCESS=Y`, then it will mark `DELETE_FLG= 'Y'` for all records that were loaded in the previous load, but not updated in the current load. If the Soft Delete feature is not enabled, then there is no impact on data.

Workaround

1. In ODI Studio, navigate to the **Designer** tab.
2. Expand your SDE ORA source adaptor, navigate to the SDE_ORA(your EBS version number)_Adaptor > SDE_ORA_EmployeeExpenseCreditCardFact_Primary > Interfaces folder, and locate the following interface:

```
SDE_ORA_EmployeeExpenseCreditCardFact_Primary.W_EXPENSE_CC_F_PE_SQ
```

3. Open the interface, display the **Quick Edit** tab, and expand the **Mappings** section.
4. Replace the filter starting with `RUN_FULL_INCREMENTAL` with the following expression:

```
AP_CREDIT_CARD_TRXNS_ALL.CREATION_DATE
>TO_DATE_VAR( '#INITIAL_EXTRACT_DATE' )
```

5. Save the interface and close it.
6. To make the changes that you made take effect, locate the scenario and regenerate the scenario.

For example, if your source adaptor is EBSR1213, then the scenario is `SDE_ORAR1213_ADAPTOR_SDE_ORA_EMPLOYEEEXPENSECREDITCARDFACT_PRIMARY`.

The scenario should be located at:

```
SDE_ORA(your E-Business Suite version number)_Adaptor
- SDE_ORA_EmployeeExpenseCreditCardFact_Primary
- Packages
- SDE_ORA_EmployeeExpenseCreditCardFact_Primary
- Scenarios
```

Existing data fix

If Oracle Business Analytics Warehouse has already been built before applying the fix above, then you must correct the existing data in Oracle Business Analytics Warehouse.

1. Run the following `UPDATE SQL` in Oracle Business Analytics Warehouse first, and then run your next incremental load as usual. This will populate only the `W_EXPENSE_CC_F` and `W_EXPENSE_CC_F_PE` tables in full load mode, while keeping other tables' records.

```
update W_ETL_LOAD_DATES set committed=0
where TARGET_TABLE_NAME IN ('W_EXPENSE_CC_FS',
'W_EXPENSE_CC_F', 'W_EXPENSE_CC_F_PE'); COMMIT;
```

Enable Data Security for Peoplesoft Data Source

This issue applies to Peoplesoft data source.

The Presentation Table 'Product' in the 'Inventory – Aging' Subject Area is not visible, even though the User is provisioned with the required Application Duty Roles. In addition, the Supply Chain Management and Fusion Costing Catalog is not visible to a User having been granted Peoplesoft specific Duty Roles.

To correct these two issues, apply the workaround.

Workaround

Pre-requisites:

- You must have installed or upgraded to Oracle BI Applications Release 11.1.1.9.1.
 - You must have access to the installed default RPD through Oracle BI EE Administration Tool.
 - You must have Administrator's privilege over the BI Presentation Services Catalog (also known as webcat).
1. In Oracle BI EE Administration Tool, edit the BI metadata repository (RPD), and expand Presentation Subject Area **Inventory – Aging**.
 2. Right-click on the Presentation Table **Product** and select **Properties...**
 3. Click **Permissions...**
 4. Select the **Read** radio button against Authenticated User.
 5. Click **OK**, then click **Save** and exit.
 6. Deploy the RPD if in offline mode or restart the BI Server if in online mode.
 7. Login to the Analytics page on your browser with a user having Administrator privileges, (for example, at: <Server>:9704/analytics).
 8. Click the **Catalog** link on the top menu bar.
 9. Make sure that **User View** is selected on the view drop down, and click the **Shared Folders** link on the left Navigation Panel.
 10. Scroll down on the right panel to the Supply Chain Management section, then click the **More** link, then click **Permissions**.
 11. Add the following Application Duty Roles with the Permissions listed below:

Accounts	Permissions
BI Administrator	Full Control
Inventory Analyst PSFT	Open
Inventory Manager PSFT	Open

Click **OK**.

12. On the Catalog page, change the view to Admin View and repeat steps 9 to 11.
13. Log out.

BI Metadata Repository Issue in Fusion Applications for Security View

Fusion Applications supports 18 levels of Territory Hierarchy, but the opaque security view `Dim_Security_PrimaryTerritoryHierarchy_TerritoryResourceQuota` in the BI Metadata Repository (RPD) uses only 12 levels.

This results in a data security issue, where users are not able to view all records.

Workaround

1. In Oracle BI EE Administration Tool, edit the BI Metadata Repository (that is, the RPD file).
2. Navigate to Physical > Oracle Data Warehouse > `Dim_Security_PrimaryTerritoryHierarchy_TerritoryResourceQuota`.
3. Change the Default Initialization String to the following SQL statement:

Note: In the SQL statement, for each of the Territory Hierarchy levels 0 to 17, repeat the 'OR' clause with a CASE statement 'case VALUEOF(*n*, NQ_SESSION.TERR_HIER_LEVEL_LIST)...'.

```
select T.TERR_WID as TERR_WID,
'Y' as PRI_TERR_HIER_SEC_FLG
from W_TERR_DH T
where T.CURRENT_FLG = 'Y'
and
(
(
case VALUEOF(0, NQ_SESSION.TERR_HIER_LEVEL_LIST)
when '0' then T.BASE_TERR_ID
when '1' then T.LVL1_TERR_ID
when '2' then T.LVL2_TERR_ID
when '3' then T.LVL3_TERR_ID
when '4' then T.LVL4_TERR_ID
when '5' then T.LVL5_TERR_ID
when '6' then T.LVL6_TERR_ID
when '7' then T.LVL7_TERR_ID
when '8' then T.LVL8_TERR_ID
when '9' then T.LVL9_TERR_ID
when '10' then T.LVL10_TERR_ID
when '11' then T.LVL11_TERR_ID
when '12' then T.LVL12_TERR_ID
when '13' then T.LVL13_TERR_ID
when '14' then T.LVL14_TERR_ID
when '15' then T.LVL15_TERR_ID
when '16' then T.LVL16_TERR_ID
when '17' then T.TOP_LVL_TERR_ID
else 'NO_VALUE'
end
) in (VALUELISTOF(NQ_SESSION.SUPER_TERR_LIST))
or
(
case VALUEOF(1, NQ_SESSION.TERR_HIER_LEVEL_LIST)
when '0' then T.BASE_TERR_ID
when '1' then T.LVL1_TERR_ID
when '2' then T.LVL2_TERR_ID
when '3' then T.LVL3_TERR_ID
```

```

when '4' then T.LVL4_TERR_ID
when '5' then T.LVL5_TERR_ID
when '6' then T.LVL6_TERR_ID
when '7' then T.LVL7_TERR_ID
when '8' then T.LVL8_TERR_ID
when '9' then T.LVL9_TERR_ID
when '10' then T.LVL10_TERR_ID
when '11' then T.LVL11_TERR_ID
when '12' then T.LVL12_TERR_ID
when '13' then T.LVL13_TERR_ID
when '14' then T.LVL14_TERR_ID
when '15' then T.LVL15_TERR_ID
when '16' then T.LVL16_TERR_ID
when '17' then T.TOP_LVL_TERR_ID
else 'NO_VALUE'
end
) in (VALUELISTOF(NQ_SESSION.SUPER_TERR_LIST))
...
...and so on.
...
or
(
case VALUEOF(17, NQ_SESSION.TERR_HIER_LEVEL_LIST)
when '0' then T.BASE_TERR_ID
when '1' then T.LVL1_TERR_ID
when '2' then T.LVL2_TERR_ID
when '3' then T.LVL3_TERR_ID
when '4' then T.LVL4_TERR_ID
when '5' then T.LVL5_TERR_ID
when '6' then T.LVL6_TERR_ID
when '7' then T.LVL7_TERR_ID
when '8' then T.LVL8_TERR_ID
when '9' then T.LVL9_TERR_ID
when '10' then T.LVL10_TERR_ID
when '11' then T.LVL11_TERR_ID
when '12' then T.LVL12_TERR_ID
when '13' then T.LVL13_TERR_ID
when '14' then T.LVL14_TERR_ID
when '15' then T.LVL15_TERR_ID
when '16' then T.LVL16_TERR_ID
when '17' then T.TOP_LVL_TERR_ID
else 'NO_VALUE'
end
) in (VALUELISTOF(NQ_SESSION.SUPER_TERR_LIST))
)

```

Error During ATG Schema Upgrade

This issue applies to Fusion Application environments during the upgrade of the ATG schema, which results in a database error.

Using response file /slot/ems6472/appmgr/R92_DWH/upgrade_atg.rsp for input UPGAST-00176: Response file specifies an unknown upgrade step ATG.ATGLITE. The command failed to complete successfully.

Workaround

1. Login into the database using sysdba credentials.
2. Execute the following query:

```

update schema_version_registry set COMP_ID='ATGLITE' where
COMP_ID='ATG' and OWNER='<BIACOMP_SCHEMA_OWNER>'

```

Missing Soft Delete on Workforce Object

This issue applies to soft delete and the resultant duplicate index failure.

When a Soft Delete (setting DELETE_FLG = 'Y') occurs on the Workforce object(s) leverage by Time and Labor ETL, a duplicate index failure can occur because of a missing filter for the applicable cases.

Workaround

Add an additional join predicate to filter out DELETE_FLG <> 'Y'.

ODI fix summary:

```
SDE_PSFT_TimeReported_Fact.W_TLB_RPTD_FS_SQ_W_PSFT_TLB_RPTD_TIME_PS
```

Join:

```
RPTD.EMPLID=PSFT_WEVT_PS.EMPLID AND
RPTD.EMPL_RCD=PSFT_WEVT_PS.EMPL_RCD AND
RPTD.DUR >= PSFT_WEVT_PS.EFFECTIVE_FROM_DT AND
RPTD.DUR < PSFT_WEVT_PS.EFFECTIVE_TO_DT AND
PSFT_WEVT_PS.MAX_EFFSEQ_IND=1 AND
PSFT_WEVT_PS.DELETE_FLG <> 'Y' AND
RPTD.DATASOURCE_NUM_ID=PSFT_WEVT_PS.DATASOURCE_NUM_ID
```

```
SDE_PSFT_TimeProcessed_Fact.W_TLB_PRCSD_FS_SQ_W_PSFT_TL_PAYABLE_TIME_P
S
```

Join:

```
PAYABLE.EMPLID=PS_JOB.EMPLID AND
PAYABLE.EMPL_RCD=PS_JOB.EMPL_RCD AND
PAYABLE.DUR >= PS_JOB.EFFECTIVE_FROM_DT AND
PAYABLE.DUR < PS_JOB.EFFECTIVE_TO_DT AND
PS_JOB.MAX_EFFSEQ_IND = 1 AND
PS_JOB.DELETE_FLG <> 'Y' AND
PAYABLE.DATASOURCE_NUM_ID = PS_JOB.DATASOURCE_NUM_ID
```

Duplicate Record for Balancing Segments when Parent and Child are the Same in PSTREELEAF

This issue applies to duplicates in the extract.

If a PSFT tree for Fund Code (Balancing Segment) is a summer tree and if the detail table and the corresponding node table are different but the Node ID has the same value as one of the detail nodes, then the current extract causes duplicates.

Workaround

1. In ODI Studio, navigate to **BI Apps Project**.
2. Under the **Mappings** folder, create a new patch SDE adaptor folder based on the appropriate PSFT release version in your environment, as follows:
 - a. Right-click the **Mappings** folder and select **New Sub-Folder**.
 - b. Specify the Name as PATCH_<Original Folder Name>.

For example, if this is for PSFT 9.0, then create patch folder PATCH_SDE_PSFT_90_Adaptor. This represents the patch SDE folder for the original SDE_PSFT_90_Adaptor folder.

- c. In the **Designer** tab, click the **Connect Navigator** button.
- d. Select **Edit Release Tags**.
- e. Select the release tag that corresponds to your source.

For example, `PSFT_9_0`.

- f. Select the patch SDE folder you created and add it to the release tag.
- g. Click **Next**. then click **Finish**.

3. Enable versioning for the preconfigured Task Folder, **SDE_PSFT_Stage_BalancingSegmentDimensionHierarchy** and **SDE_PSFT_BalancingSegmentDimensionHierarchy** to be modified.

The version comment should indicate that this is the base version of the task. Subsequent patches applied to this task in the future require increasing the version in the comment so that it can be compared to the original task to identify any changes.

- a. Navigate to the appropriate PSFT SDE folder (for example, `SDE_PSFT_90_Adaptor`), right-click the task folder **SDE_PSFT_Stage_BalancingSegmentDimensionHierarchy** and select **Version > Create Version**.
- b. Accept the default version number, 1.0.0.0.
- c. Add a description indicating that this is the original version of this task.
- d. Repeat steps a to c for **SDE_PSFT_BalancingSegmentDimensionHierarchy**.

4. Duplicate the Task folder to be modified (**SDE_PSFT_Stage_BalancingSegmentDimensionHierarchy** and **SDE_PSFT_BalancingSegmentDimensionHierarchy**) by copying it.

Cut and paste the copied task folder to the patch adaptor folder that you have created (example, `PATCH_SDE_PSFT_90_Adaptor`), and rename it to remove the 'Copy of...' prefix.

5. Using the same method as in step 3, enable versioning of copied Task folders.

The version comment should indicate this is the original version. This versioning enables comparison of the modified task to a copy of the original version to determine all changes that have been introduced.

6. Create another version of the copied task **SDE_PSFT_Stage_BalancingSegmentDimensionHierarchy** and **SDE_PSFT_BalancingSegmentDimensionHierarchy**.

The version comment should indicate this is the modified version. Use the same steps as above.

7. Make the changes which are mentioned below for the main interface **SDE_PSFT_Stage_BalancingSegmentDimensionHierarchy.W_PSFT_BALANCING_SEGMENT_DH_PS** in the folder **SDE_PSFT_Stage_BalancingSegmentDimensionHierarchy** under the `PATCH_<Adaptor>` folder.
 - a. Modify the expressions of some of the columns as shown below.

Column	New Expression
BALANCING_SEGMENT_NAME	<pre>IIF(SQ_PSTREE.NODE_RECNAME='TREE_NODE_TBL', IIF(ISNULL(SQ_PSTREE.TREE_NODE_NUM), SPACES2NULL("Y",SQ_PSTREE.TREE_NODE), SPACES2NULL("Y",SQ_PSTREE.TREE_NODE) '~' 'NODE'), SPACES2NULL("Y",SQ_PSTREE.TREE_NODE))</pre>
PARENT_BALANCING_SEGMENT_NAME	<pre>IIF(SQ_PSTREE.PARENT_NODE_NUM = 0,NULL, IIF(SQ_PSTREE.NODE_RECNAME='TREE_NODE_TBL', SPACES2NULL("Y",SQ_PSTREE.PARENT_NODE_NAME) '~NODE', SPACES2NULL("Y",SQ_PSTREE.PARENT_NODE_NAME)))</pre>
PAR_INTEGRATION_ID	<pre>'Fund Code~' SPACES2NULL("N",SQ_PSTREE.SETID) '~' SPACES2NULL("N",SQ_PSTREE.TREE_NAME) '~' IIF(SQ_PSTREE.PARENT_NODE_NUM = 0,NULL, IIF(SQ_PSTREE.NODE_RECNAME='TREE_NODE_TBL', SPACES2NULL("Y",SQ_PSTREE.PARENT_NODE_NAME) '~NODE', SPACES2NULL("Y",SQ_PSTREE.PARENT_NODE_NAME)))</pre>
INTEGRATION_ID	<pre>'Fund Code~' SPACES2NULL("N",SQ_PSTREE.SETID) '~' SPACES2NULL("N",SQ_PSTREE.TREE_NAME) '~' IIF(SQ_PSTREE.NODE_RECNAME='TREE_NODE_TBL', IIF(ISNULL(SQ_PSTREE.TREE_NODE_NUM), SPACES2NULL("Y",SQ_PSTREE.TREE_NODE), SPACES2NULL("Y",SQ_PSTREE.TREE_NODE) '~' 'NODE'), SPACES2NULL("Y",SQ_PSTREE.TREE_NODE))</pre>

- b. Validate and save the changes to the interface.
- c. Before regenerating the scenario, go to the original task folder **SDE_PSFT_Stage_BalancingSegmentDimensionHierarchy** in the default installed mapping folder (for example, SDE_PSFT_90_Adaptor), and delete the existing default installed scenario (for example,

SDE_PSFT_90_ADAPTOR_SDE_PSFT_STAGE_BALANCINGSEGMENTDIMENSIONHIERARCHY).

- d. Go back to the modified SDE_PSFT_Stage_BalancingSegmentDimensionHierarchy in the patch folder, navigate to **Packages**, and generate the scenario using the option to generate the scenario as if all underlying objects are materialized.
 - e. Rename the scenario name to use the original default installed scenario name. For example, SDE_PSFT_90_ADAPTOR_SDE_PSFT_STAGE_BALANCINGSEGMENTDIMENSIONHIERARCHY for PSFT 9.0 or SDE_PSFT_91_ADAPTOR_SDE_PSFT_STAGE_BALANCINGSEGMENTDIMENSIONHIERARCHY for PSFT 9.1..
8. Make the changes which are mentioned below for the main interface **SDE_PSFT_BalancingSegmentDimensionHierarchy.W_BALANCING_SEGMENT_DHS** in the folder **SDE_PSFT_BalancingSegmentDimensionHierarchy** under the **PATCH_<Adaptor>** folder.
- a. Modify the expressions (use BALANCING_SEGMENT_NAME instead of BALANCING_SEGMENT_ID) for some of the columns as shown below:

Column	New Expression
LEVEL0_INTEGRATION_ID	'Fund Code' '~' SQ_HIERARCHY.SETID '~' SQ_HIERARCHY.BALANCING_SEGMENT_NAME
All other LEVELx_INTEGRATION_ID	'Fund Code' '~' SQ_HIERARCHY.SETID '~' HIERARCHY_FLATTEN(SQ_HIERARCHY.BALANCING_SEGMENT_NAME, <level*>)
INTEGRATION_ID	'Fund Code' '~' SQ_HIERARCHY.SETID '~' SQ_HIERARCHY.TREE_NAME '~' SQ_HIERARCHY.BALANCING_SEGMENT_NAME

Note: Please note the <level> is not the same as the column Level x but it needs to be 31 for Level1, 30 for Level 2..... 1 for Level30.

- b. Navigate to the **Flow** tab and to the **KM properties**. Under the KM properties, navigate to a property called OBI_PARENT_CHILD_JOIN and modify the join condition there to the condition shown below:

```
PARENT.INTEGRATION_ID = CHILD.PAR_INTEGRATION_ID
AND PARENT.DATASOURCE_NUM_ID = CHILD.DATASOURCE_NUM_ID
AND PARENT.EFFDT=CHILD.EFFDT
```

- c. Validate and save the changes to the interface.
- d. Before regenerating the scenario, go to the original task folder **SDE_PSFT_BalancingSegmentDimensionHierarchy** in the default installed mapping folder (for example, `SDE_PSFT_90_Adaptor`), and delete the existing default installed scenario (for example, `SDE_PSFT_90_ADAPTOR_SDE_PSFT_BALANCINGSEGMENTDIMENSIONHIERARCHY`).
- e. Go back to the modified `SDE_PSFT_BalancingSegmentDimensionHierarchy` in the patch folder, navigate to **Packages**, and generate the scenario using the option to generate the scenario as if all underlying objects are materialized.
- f. Rename the scenario name to use the original default installed scenario name. For example, `SDE_PSFT_90_ADAPTOR_SDE_PSFT_BALANCINGSEGMENTDIMENSIONHIERARCHY` for PSFT 9.0 or `SDE_PSFT_91_ADAPTOR_SDE_PSFT_BALANCINGSEGMENTDIMENSIONHIERARCHY` for PSFT 9.1.

Headcount Movement Detailed Report Displays Error

This issue applies to the Headcount Movement detailed report.

When navigating to the Headcount Movement detailed report from report Workforce Deployment/Staffing level, the detailed report returns the following error:

```
nQSError: 43119] Query Failed: [nQSError: 17001] Oracle Error code: 600,
message: ORA-00600: internal error code, arguments: [qesdpSigError],
[adaptive join resolution failed], [205], [], [], [], [], [], [], [], [], []
at OCI call OCISmtFetch. [nQSError: 17012] Bulk fetch failed. (HY000)
```

Workaround

As SYSDBA execute the following database level setting change:

```
alter system set "_optimizer_adaptive_plans"=false;
```

Issues and Workarounds for Oracle GoldenGate

There are no reported issues that are related to the use of Oracle GoldenGate.

