

**Oracle® Revenue Management and Billing for  
Financial Services Version 2.2.4.2**

ORMB-Documaker Integration Guide for Banking and  
Insurance

E37230-01

Revision 1.1

September, 2012

# ORMB-Documaker Integration Guide for Banking and Insurance

ORMB-Documaker Integration Guide for Banking and Insurance

E37230-01

Copyright © 2012, Oracle and/or its affiliates. All rights reserved.

Oracle is a registered trademark of Oracle Corporation and/or its affiliates. Other names may be trademarks of their respective owners.

This software and related documentation are provided under a license agreement containing restrictions on use and disclosure, and are protected by intellectual property laws. Except as expressly permitted in your license agreement or allowed by law, you may not use, copy, reproduce, translate, broadcast, modify, license, transmit, distribute, exhibit, perform, publish or display any part, in any form, or by any means. Reverse engineering, disassembly, or de-compilation of this software, unless required by law for interoperability, is prohibited.

The information contained herein is subject to change without notice and is not warranted to be error-free. If you find any errors, please report them to us in writing.

If this software or related documentation is delivered to the U.S. Government or anyone licensing it on behalf of the U.S. Government, the following notice is applicable:

## U.S. GOVERNMENT RIGHTS

Programs, software, databases, related documentation and technical data delivered to U.S. Government customers are "commercial computer software" or "commercial technical data" pursuant to the applicable Federal Acquisition Regulation and agency-specific supplemental regulations. As such, the use, duplication, disclosure, modification, and adaptation shall be subject to restrictions and license terms set forth in the applicable Government contract, and, to the extent applicable by the terms of the Government contract, the additional rights set forth in FAR 52.227-19, Commercial Computer Software License (December 2007). Oracle USA, Inc., 500 Oracle Parkway, Redwood City, CA 94065.

This software is developed for general use in a variety of information management applications. It is not developed or intended for use in any inherently dangerous applications, including applications which may create a risk of personal injury. If you use this software in dangerous applications, then you shall be responsible to take all appropriate fail-safe, backup, redundancy and other measures to ensure the safe use of this software. Oracle Corporation and its affiliates disclaim any liability for any damages caused by use of this software in dangerous applications.

This software and documentation may provide access to or information on content, products and services from third parties. Oracle Corporation and its affiliates are not responsible for and expressly disclaim all warranties of any kind with respect to third party content, products and services. Oracle Corporation and its affiliates will not be responsible for any loss, costs, or damages incurred due to your access to or use of third party content, products or services.

# Preface

---

## Purpose

This document will help you to understand the pre-requisites and required setup for the Oracle Revenue Management and Billing (ORMB) application to integrate with Oracle Documaker for the purpose of formatting, creating and displaying outbound bills, statements, and correspondence.

## Intended Audience

The following are the intended audience of this document:

- Users
- Consulting staff
- Administrators

## Organization of the Document

The information in this document is organized into the following chapters and appendices:

| Chapter No. | Chapter Name                            | Chapter Description   |
|-------------|---|---|
| Chapter 1   | Overview                                | Provides an overview, assumptions, constraints and dependencies of the ORMB application for integration with Oracle Documaker.                          |
| Chapter 2   | Integration process for Bill            | Provides information about various base algorithm types, and other set up requirements for printing On Line Bills.                                      |
| Chapter 3   | Integration process for Correspondence  | Provides information about various base algorithm types, and other set up requirements for printing On Line Letters.                                    |
| Chapter 4   | Set up for Oracle Documaker integration | Provides information about various install directories and .ini files that must be configured for the application integration to perform correctly      |
| Chapter 5   | A sample outbound XML                   | Provides information about the sample XML and XSL used to exchange data between the two applications in a format that they can both use and understand. |

# Conventions

| Convention      | Meaning  |
|-----------------|--|
| <b>boldface</b> | Boldface type indicates graphical user interface elements associated with an action, or terms defined in text or the glossary        |
| <i>italic</i>   | Italic type indicates book titles, emphasis or placeholder variables for which you supply particular values                          |
| monospace       | Monospace type indicates commands within a paragraph, URLs, code in examples, text that appears on the screen or text that you enter |

# Contents

|   |           |
|---|-----------|
| <b>CHAPTER 1: OVERVIEW .....</b>  | <b>7</b>  |
| <b>CHAPTER 2: INTEGRATION PROCESS FOR BILL .....</b>  | <b>9</b>  |
| 1. <i>Bill Display and Batch extract Process flows.....</i>   | <i>9</i>  |
| 2. <i>Online Bill Display.....</i>  | <i>9</i>  |
| 3. <i>Online Bill Display - Implementation Details(for Insurance and Banking).....</i>                    | <i>11</i> |
| 4. <i>Online Bill Display Algorithm(for Insurance and Banking).....</i>                                   | <i>13</i> |
| 5. <i>Insurance Bill Extract Algorithm Type.....</i>  | <i>13</i> |
| 6. <i>Bill Route Type – Insurance Individual Life Bill Extract Implementation Details.....</i>            | <i>15</i> |
| 7. <i>Bill Route Type – Insurance Individual Health Bill Extract Implementation Details.....</i>          | <i>16</i> |
| 8. <i>Bill Route Type – Insurance Individual P&amp;C Bill Extract Implementation Details.....</i>         | <i>17</i> |
| 9. <i>Bill Route Type – Insurance Individual Consolidated Bill Extract Implementation Details.....</i>    | <i>18</i> |
| 10. <i>Bill Route Type – Insurance List Life Bill Extract Implementation Details.....</i>                 | <i>18</i> |
| 11. <i>Bill Route Type – Insurance List Health Care Bill Extract Implementation Details.....</i>          | <i>19</i> |
| 12. <i>Bill Route Type – Insurance Agency List Bill Extract Implementation Details.....</i>               | <i>20</i> |
| 13. <i>Banking Bill Extract Algorithm Type.....</i>   | <i>21</i> |
| 14. <i>Bill Route Type – Banking Route Type.....</i>  | <i>24</i> |
| 15. <i>Business Services (Insurance).....</i>   | <i>25</i> |
| 16. <i>Business Services (Banking).....</i>   | <i>25</i> |
| 17. <i>Business Service for extracting Bill Header Information.....</i>                                   | <i>26</i> |
| 18. <i>Business Service for extracting Policy Details for Insurance Bills.....</i>                        | <i>26</i> |
| 19. <i>Business Service for extracting Account Summary Details for Insurance Bills.....</i>               | <i>28</i> |
| 20. <i>Business Service for extracting Bill Header Details for Banking Bills.....</i>                     | <i>28</i> |
| 21. <i>Business Service for extracting Invoice Summary for Banking Bills.....</i>                         | <i>30</i> |
| 22. <i>Business Service for extracting Account Summary Details for Banking Bills.....</i>                 | <i>31</i> |
| 23. <i>Business Service for extracting Service Summary Details for Banking Bills.....</i>                 | <i>31</i> |
| 24. <i>Business Service for extracting Service Activity Details for Banking Bills.....</i>                | <i>32</i> |
| 25. <i>Business Service for extracting Prior Period Adjustment Details for Banking Bills.....</i>         | <i>33</i> |
| 26. <i>Batch Bill Process Flow.....</i>   | <i>34</i> |
| <b>CHAPTER 3: INTEGRATION PROCESS FOR LETTERS: .....</b>  | <b>35</b> |
| 27. <i>Online Letter Image - Implementation Details.....</i>  | <i>38</i> |
| 28. <i>Online Letter Image Algorithm.....</i>   | <i>39</i> |
| 29. <i>Letter Template – Letter Extract Implementation Details.....</i>                                   | <i>39</i> |
| 30. <i>Letter Template – Letter Extract – (Auto Pay) Implementation Details.....</i>                      | <i>41</i> |
| 31. <i>Letter Template – Letter Extract – (Credit Card Expiry) Implementation Details.....</i>            | <i>42</i> |
| 32. <i>Letter Template – Letter Extract – (Past Due) Implementation Details.....</i>                      | <i>43</i> |
| 33. <i>Letter Template – Letter Extract – (Notice of Intent to Cancel) Implementation Details.....</i>    | <i>44</i> |
| 34. <i>Business Service for generic information extract.....</i>  | <i>45</i> |
| 35. <i>Business Service for auto pay letter extract information.....</i>                                  | <i>45</i> |
| 36. <i>Business Service for credit card expiry letter extract information.....</i>                        | <i>46</i> |
| 37. <i>Business Service for past due &amp; notice of intent to cancel letter extract information.....</i> | <i>46</i> |
| 38. <i>Overdue process configuration for Past Due and Notice of Intent to Cancel letters.....</i>         | <i>47</i> |
| 39. <i>Auto Pay Source Configuration.....</i>   | <i>49</i> |
| 40. <i>Batch Letter Process Flow.....</i>   | <i>50</i> |
| <b>CHAPTER 4: SETUP FOR ORACLE DOCUMAKER INTEGRATION.....</b>   | <b>51</b> |

# ORMB-Documaker Integration Guide for Banking and Insurance

|   |  |           |
|---|--|-----------|
| 41.   | <i>Install Directory setup (For Windows)</i> .....   | 51        |
| 42.   | <i>Install Directory setup (Enterprise Linux Enterprise Linux Server Release 5.2 (Carthage))</i> ..... | 52        |
| 43.   | <i>Batch Control set up</i> .....  | 52        |
| <b>CHAPTER 5: A SAMPLE OUTBOUND XML</b> ..... |  | <b>53</b> |

# Chapter 1: Overview

---

Oracle Revenue & Billing Management (ORMB) generates bills and correspondence letters for insurance. Oracle Documaker presents bills and letters in portable document format (PDF) format.

ORMB sends an extract in the form of an XML message to Oracle Documaker. The Oracle Documaker application in turn generates portable document format (PDF) files for bills and correspondences. These PDF files are rendered through a browser to the customer.

When you click the *ONLINE BILL DISPLAY* button shown in ORMB-bill user interface for Bills, the integrated solution formats and creates a PDF version of the bill and displays it to you in a browser window. Similarly PDF files are generated for correspondence when you click the online *Display Letter* button in ORMB-customer contact user interface.

Sample extracts and templates are provided for Bills and correspondence letters for Documaker integration including:

**Bills** – P&C insurance, life insurance, health insurance, banking

- Individual Bills for P&C, life & health insurance (3)
- Consolidated Individual Bill (1)
- List Bills for life & health insurance (2)
- Broker Bill P&C insurance (1)
- Banking Bill (IGA)(1)

**Correspondence** - Insurance

- Past Due
- Notice of Intent to Cancel
- Expiring credit card (with Manual Customer Contact)
- Auto-pay changes confirmation (with Manual Customer Contact)

The end to end process for the mass generation and distribution of documents using the ORMB to Oracle Documaker integration is as follows:

- ORMB calculates and generates charges for a bill
- ORMB extracts billing related data using a scheduled batch process and sends it to Documaker
- Using the sample templates provided, Documaker formats the bill
- Customer contacts records are created in ORMB through various means. For example an Overdue Monitor batch process may generate customer contacts for Past Due and Notices of Intend to Cancel
- ORMB extracts the customer contact and related information as part of a batch process and sends this information to Documaker
- Documaker formats the correspondence using the sample templates

Bills and correspondence can also be viewed in real time in order to answer customer questions or send copies of the bill and correspondence.

## ORMB-Documaker Integration Guide for Banking and Insurance

The process for this is:

- Click the Online Bill Display button, for bills or click the Display Letter button of customer contacts for correspondence
- ORMB extracts the single bill or correspondence and sends it to Documaker
- Documaker formats the bill or letter based on the templates
- A PDF copy of the bill, or letter, is rendered in a separate browser window

### **Assumptions, Constraints and Dependencies:**

- All sample bills and correspondence are branded as “Alamere” and use the “Alamere” logo and address. We assume you will make a copy of the supplied template and make the necessary changes to brand these documents for your organization
- Each bill type is associated with a template set in the Oracle Documaker application
- Each correspondence type is associated with a template set in Oracle Documaker application
- A customer contact is created within ORMB for Auto Pay and Expiring Credit Card. This capability is not included as a pre-configured capability at this time and must be configured as part of an implementation project.
- Current XSL files have been designed as per the sample Documaker templates. Implementation teams can modify the provided XSLs if additional fields need to be displayed, in addition to those provided with the base algorithm type released with the product
- There are limitations with respect to lengths of fields displayed on the Documaker templates.



## Chapter 2: Integration process for Bill

### 1. Bill Display and Batch extract Process flows

Step 1: On click of the “Display Bill” button, ORMB extracts bill information, generates an XML file corresponding to format specified by the Documaker template and sends the XML message to Documaker.

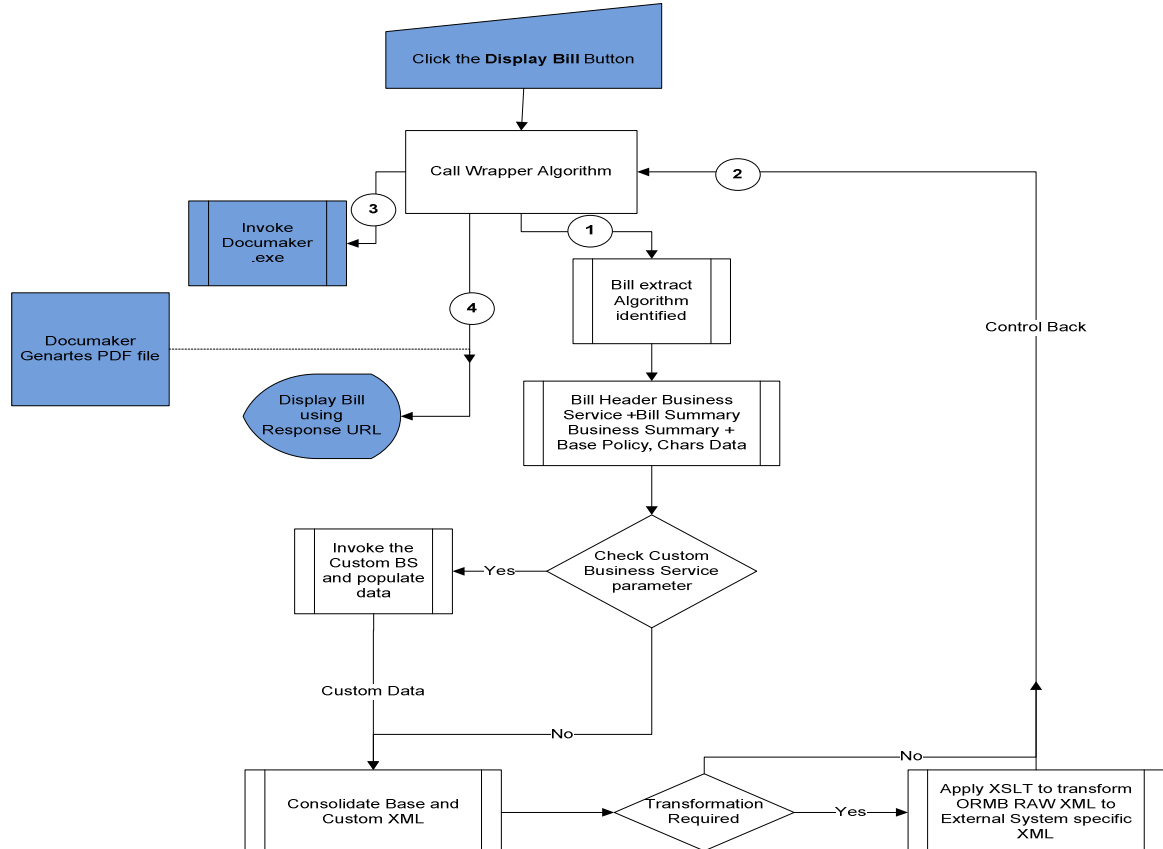
Step 2: Documaker formats the bill based on the rules in the template and generates a PDF file

Step 3: ORMB displays the PDF file in a separate browser window.

The above mentioned process is performed by the wrapper algorithm to be created using algorithm type ‘C1\_ONLNBILL’.

This algorithm is defined in the installation option framework for system event “online bill display”.

### 2. Online Bill Display



## ORMB-Documaker Integration Guide for Banking and Insurance

An algorithm 'C1\_ONLNBILL' is supplied as a sample of the wrapper algorithm.

The Insurance Bill Extract Algorithm Type (**C1\_INSINBLEX**) is associated with this algorithm and for banking bills the Algorithm Type **C1\_BNKBLEX** has to be associated with Online Wrapper Algorithm.

The algorithm identifies the extract algorithm based on the bill routes defined with the main customer of an account.

The following table shows the list of extract algorithms to be set up at bill route type

Each bill route type corresponds to a bill type

The following table shows the list of extract algorithms required for each bill type.

| <b>Bill Route Type on Main Customer</b>       | <b>Bill Route Type Code</b> | <b>Bill Routing Method</b> | <b>Batch Control</b> | <b>Extract Algorithm</b> |
|---|-----------------------------|----------------------------|----------------------|--------------------------|
| Postal Insurance Individual Life Bill         | INSINLFB                    | Postal                     | POSTROUT             | CM_INSINLFB              |
| Postal Insurance Individual Healthcare Bill   | INSINHCB                    | Postal                     | POSTROUT             | CM_INSINHCB              |
| Postal Insurance Individual Consolidated Bill | INSINCSB                    | Postal                     | POSTROUT             | CM_INSINCSB              |
| Postal Insurance Agency List Bill             | INSBKPCB                    | Postal                     | POSTROUT             | CM_INSBKPCB              |
| Postal Insurance Individual P&C Bill          | INSINPCB                    | Postal                     | POSTROUT             | CM_INSINPCB              |
| Postal Insurance List Healthcare Bill         | INSLSHCB                    | Postal                     | POSTROUT             | CM_INSLSHCB              |
| Postal Insurance                              | INSLSLFB                    | Postal                     | POSTROUT             | CM_INSLSLFB              |

## ORMB-Documaker Integration Guide for Banking and Insurance

|                    |        |        |          |             |
|--------------------|--------|--------|----------|-------------|
| List Life Bill     |        |        |          |             |
| Banking Route Type | BNKRTP | Postal | POSTROUT | CM_BNKBILEX |

The following table shows the list of Algorithm types and algorithm entities

| Algorithm Entity                      | Algorithm Type | Algorithm    |
|---------------------------------------|----------------|--------------|
| Installation – Online Bill Display    | C1_ONLNBILL    | CM_ONLNBILL  |
| Bill Route Type – Bill Extract Method | C1_INSINBLEX   | CM_INSINLFBL |
| Bill Route Type – Bill Extract Method | C1_INSINBLEX   | CM_INSINHCBL |
| Bill Route Type – Bill Extract Method | C1_INSINBLEX   | CM_INSINPCBL |
| Bill Route Type – Bill Extract Method | C1_INSINBLEX   | CM_INSINCSBL |
| Bill Route Type – Bill Extract Method | C1_INSINBLEX   | CM_INSLSLFBL |
| Bill Route Type – Bill Extract Method | C1_INSINBLEX   | CM_INSLSHCBL |
| Bill Route Type – Bill Extract Method | C1_INSINBLEX   | CM_INSBKPCBL |
| Bill Route Type – Banking Route Type  | C1_BNKBLEX     | CM_BNKBLEX   |

Note: Each extract algorithm will internally invoke three (for Insurance) /six (for Banking) business services to extract the data and transform the same into output data as required by the Oracle Documaker application.

It is recommended to define all the required soft parameters for each and every algorithm mentioned in the document. For Oracle linux please note that paths mentioned for soft parameters are case sensitive.

Following characteristic types are pre requisites for configuring algorithms for bill extraction.

| Char Code | Description | Type                     | Characteristic Entity |
|-----------|-------------|--------------------------|-----------------------|
| C1_FCAMT  | Face Amount | Adhoc Value (Number > 0) | Policy Person         |
| BIRTHDAT  | Birthdate   | Adhoc Value (Date Type)  | Person                |

Following Policy Person Role needs to be created in the application before configuring Algorithms for bill extraction

| Role Code | Description     |
|-----------|-----------------|
| AGENT     | Insurance Agent |

### 3. Online Bill Display - Implementation Details(for Insurance and Banking)

This algorithm type is created for Oracle Documaker.

|                       |   |
|-----------------------|---|
| <b>Algorithm Type</b> | <b>C1_ONLNBILL</b>  |
| <b>Description</b>    | Wrapper Algorithm Type for Online Bill Display                                      |
| <b>Detailed</b>       | This Algorithm is created for online bill view. It identifies respective algorithms |

## ORMB-Documaker Integration Guide for Banking and Insurance

|                            |   |                          |  |
|----------------------------|---|--------------------------|--|
| <b>Description</b>         | <p>based on the bill route type configuration corresponding to respective bills. Currently the integration with third party application is based on calling of a batch script which internally invokes application specific executables. Sleep time needs to be configured in case of integration using executable. The time needs to be configured in milli seconds (e.g. to configure 5 seconds enter 5000 as value).</p> <p>Two folders need to be created one for XML extract and other for Dat folder. Input File Path is the root folder in which dat file folder and extract folder will be created. Output file path is the path where third party application e.g. Documaker will generate pdf files. Bill View folder is the output folder from where all the final pdf files will be displayed.</p> <p>Bat file name is the name of the bat file which will invoke application specific executable. It internally sends two parameters one for the input dat file name and other for the expected output PDF file name.</p> <p>Output Http Url is the web server address where billview folder is configured. Billview folder path will be relative to the “context root” of the web server.</p> |                          |  |
| <b>Invocation point(s)</b> | Online Bill Display – (View Bill)   |                          |  |
| <b>Program Type</b>        | Java  |                          |  |
| <b>Name</b>                | com.splwg.ccb.domain.billing.billtransform.OnlineBillDisplayAlgo  |                          |  |
| <b>Parameters</b>          | <b>Name</b>   | <b>Required (yes/no)</b> | <b>Description</b>   |
|                            | Input File Path   | No                       | File path where all the XSL, PDF Extract and Data files will be present. |
|                            | Encoding Class Name   | No                       | Class Name to encode outbound XML.                                       |
|                            | Outbound Message Type   | No                       | Use Outbound message BO created above                                    |
|                            | External System   | No                       | External system to be configured as per interface of external System.    |
|                            | Outbound Message B O  | No                       | Use existing MO (F1-OUTMSG) and default Application Service (F1-DFLTS)   |
|                            | Output File Path  | No                       | Name of the file path where pdf will be generated.                       |
|                            | Data Folder Name  | No                       | Used by the external system to get the path of extract files.            |
|                            | Bat file for RMB  | No                       | Bat file name for converting documaker extract xml files into pdf.       |
|                            | Output HTTP URL   | No                       | URL name where output pdf will be displayed.                             |

## ORMB-Documaker Integration Guide for Banking and Insurance

|                        |  |    |   |
|------------------------|--|----|---|
|                        | Bill View Folder   | No | Bill View Folder name where the final pdf will get stored.  |
|                        | Sleep Time for Online Display  | No | Sleep time needs to be configured in case of integration using executable. The time needs to be configured in milli seconds (e.g. to configure 5 seconds enter 5000 as value) |
| <b>Detailed Design</b> | <b>The Online Bill Display Wrapper Algorithm will call specific Bill Extract Algorithm based on the Bill Route Type configured for the bill.</b> |    |   |

### 4. Online Bill Display Algorithm(for Insurance and Banking)

Sample algorithm configuration:

|                       |                              |  |
|-----------------------|------------------------------|--|
| <b>Algorithm Name</b> | <b>CM_ONLNBILL</b>           |  |
| <b>Parameters</b>     | Input File Path              | <b>Folder where data/extract folders will be created e.g. D:/spl/temp/</b> |
|                       | Encoding Class Name          | <b>(Not implemented in this release)</b>                                   |
|                       | Outbound Message Type        | <b>NA</b>  |
|                       | External System              |  |
|                       | Outbound Message BO          | <b>To be defined later</b>   |
|                       | Output File Path             | <b>D:\spl\C1\2.2.0\Code\modules\web\dist\root\billview</b>                 |
|                       | Data Folder Name             | <b>Data</b>  |
|                       | Bat file for RMB             | <b>D:\spl\documaker\12.0\Alamere\INPUT\rmbOnlinePrint.bat</b>              |
|                       | Output HTTP URL              | <b>http://localhost:8131/spl/</b>  |
|                       | Bill View Folder             | <b>billview</b>  |
|                       | Sleep Time (in milliseconds) | <b>5000</b>  |
|                       | Data Folder Name             | <b>Data</b>  |

### 5. Insurance Bill Extract Algorithm Type

|                       |                     |
|-----------------------|---------------------|
| <b>Algorithm Type</b> | <b>C1_INSINBLEX</b> |
|-----------------------|---------------------|

## ORMB-Documaker Integration Guide for Banking and Insurance

|                             |   |                          |  |
|-----------------------------|---|--------------------------|--|
| <b>Description</b>          | Insurance Bill Extract Algorithm Type.  |                          |  |
| <b>Detailed Description</b> | <p>This algorithm type is created for extracting Insurance bills. This will internally invoke three business services to extract the data and transform the same into output data as required by a third party application. Three base business services invoked are C1-BillHeaderExtract, C1-InsAcctSummaryExtract, C1-PolicyDetailsExtract for extracting Bill Header, Account Summary and Policy Details for individual and list bills. A custom business service can also be configured in case any additional enrichment of the output XML needs to be done. The algorithm program transforms the internal ORMB XML into outbound XML as per the XSL configured on respective algorithms.</p> <p>A Minimum Due and Installment Fee need to be configured if same is to be displayed on Bill.</p> |                          |  |
| <b>Invocation point(s)</b>  | Bill Route Type   |                          |  |
| <b>Program Type</b>         | Java  |                          |  |
| <b>Name</b>                 | com.splwg.ccb.domain.billing.billtransform. InsuranceBillExtractAlgo  |                          |  |
| <b>Parameters</b>           | <b>Name</b>   | <b>Required (yes/no)</b> | <b>Description</b>   |
|                             | Face Amount Characteristic Code   | No                       | Characteristic type used for Face Amount. Added as a characteristic for Policy Person relationship |
|                             | Birth Date Characteristic Code  | No                       | Characteristic type used for Birth Date. Added as a characteristic for Person.                     |
|                             | Custom Business Service   | No                       | Name of Custom Business Service for extracting custom information.                                 |
|                             | XSL File Name   | No                       | XSL file used for XML transformation from raw ORMB XML to Documaker XML                            |
|                             | Extract Folder for XML generation   | No                       | Extract folder where the Documaker XML will get extracted after the XSLT.                          |
|                             | Dat Folder for creation of .dat files for external application  | No                       | Used by the external system to get the path of extract files                                       |
|                             | Bill Date Format  | No                       | Bill date format.  |
|                             | Date format for other dates in the Bill   | No                       | Date format for other dates in the Bill  |
|                             | Minimum Amount Due (Do not enter % sign)  | No                       | Minimum amount due.  |
|                             | Installment Fee (If needed to be displayed on bills)  | No                       | Installment fee.   |
|                             | Service Agent Role Code   | No                       | Service agent role code.   |

|                        |  |    |  |
|------------------------|--|----|--|
|                        | External System Input String   | No | Input String for External System from where it will pick up path for extract file. |
| <b>Detailed Design</b> | <b>This algorithm invokes business services C1-BillHeaderExtract, C1-InsAcctSummaryExtract, C1-PolicyDetailsExtract for extracting Bill Header, Account Summary and Policy Details of individual and list bills.</b> |    |  |

**6. Bill Route Type – Insurance Individual Life Bill Extract Implementation Details**

Sample algorithm configuration:

|                       |  |  |
|-----------------------|--|--|
| <b>Algorithm Name</b> | <b>CM_INSINLFBL</b>  |  |
| <b>Parameters</b>     | <b>Name</b>  | <b>Value</b>   |
|                       | Face Amount Characteristic Code                                | <b>C1_FCAMT</b>  |
|                       | Birth Date Characteristic Code                                 | <b>NA</b>  |
|                       | Custom Business Service  | <b>To be defined later</b>                               |
|                       | XSL File Name  | <b>D:\spl\temp\XSL\ORMB_DM_Ind_Life_Bill_Extract.xml</b> |
|                       | Extract Folder for XML generation                              | <b>Extract</b>   |
|                       | Dat Folder for creation of .dat files for external application | <b>Data</b>  |
|                       | Bill Date Format   | <b>MMMM dd, yyyy</b>                                     |
|                       | Date format for other dates in the Bill                        | <b>MM-dd-yyyy</b>  |
|                       | Minimum Amount Due (Do not enter % sign)                       | <b>NA</b>  |
|                       | Installment Fee (If needed to be displayed on bills)           | <b>NA</b>  |
|                       | Service Agent Role Code  | <b>AGENT</b>   |

|  |                              |                       |
|--|------------------------------|-----------------------|
|  | External System Input String | <b>XML_FILE_INPUT</b> |
|--|------------------------------|-----------------------|

**7. Bill Route Type – Insurance Individual Health Bill Extract Implementation Details**

Sample algorithm configuration:

| <b>Algorithm Name</b> | <b>CM_INSINHCBL</b>  |  |
|-----------------------|--|--|
| <b>Parameters</b>     | <b>Name</b>  | <b>Value</b>   |
|                       | Face Amount Characteristic Code                                | <b>NA</b>  |
|                       | Birth Date Characteristic Code                                 | <b>NA</b>  |
|                       | Custom Business Service  | <b>To be defined later</b>                                 |
|                       | XSL File Name  | <b>D:\spl\temp\XSL\ORMB_DM_Ind_Health_Bill_Extract.xsl</b> |
|                       | Extract Folder for XML generation                              | <b>Extract</b>   |
|                       | Dat Folder for creation of .dat files for external application | <b>Data</b>  |
|                       | Bill Date Format   | <b>MMMM dd, yyyy</b>                                       |
|                       | Date format for other dates in the Bill dates in the bill      | <b>MM-dd-yyyy</b>  |
|                       | Minimum Amount Due (Do not enter % sign)                       | <b>NA</b>  |
|                       | Installment Fee (If needed to be displayed on bills)           | <b>NA</b>  |
|                       | Service Agent Role Code  | <b>AGENT</b>   |
|                       | External System Input String                                   | <b>XML_FILE_INPUT</b>                                      |



8. Bill Route Type – Insurance Individual P&C Bill Extract Implementation Details

Sample algorithm configuration:

|                       |   |  |
|-----------------------|---|--|
| <b>Algorithm Name</b> | <b>CM_INSINPCBL</b>   |  |
| <b>Parameters</b>     | <b>Name</b>   | <b>Value</b>   |
|                       | Face Amount Characteristic Code   | <b>NA</b>  |
|                       | Birth Date Characteristic Code  | <b>NA</b>  |
|                       | Custom Business Service   | <b>To be defined later</b>   |
|                       | XSL File Name   | <b>D:\spl\temp\XSL\ORMB_DM_Ind_P&amp;C_Bill_Extract.xml</b>  |
|                       | Extract Folder for XML generation   | <b>Extract</b>   |
|                       | Dat Folder for creation of .dat files for external application              | <b>Data</b>  |
|                       | Bill Date Format  | <b>MMMM dd, yyyy</b>   |
|                       | Date format for other dates in the Bill                                     | <b>MM-dd-yyyy</b>  |
|                       | Minimum Amount Due (Percentage of the Current Balance .Do not enter % sign) | <b>10 (i.e. 10% of the current balance amount if Current Balance is\$900 then minimum amount due=\$90)</b> |
|                       | Installment Fee (If needed to be displayed on bills)                        | <b>10</b>  |
|                       | Service Agent Role Code   | <b>AGENT</b>   |
|                       | External System Input String  | <b>XML_FILE_INPUT</b>  |

9. Bill Route Type – Insurance Individual Consolidated Bill Extract Implementation Details

Sample algorithm configuration:

|                       |  |  |
|-----------------------|--|--|
| <b>Algorithm Name</b> | <b>CM_INSINCSBL</b>  |  |
| <b>Parameters</b>     | <b>Name</b>  | <b>Value</b>   |
|                       | Face Amount Characteristic Code                                | NA   |
|                       | Birth Date Characteristic Code                                 | NA   |
|                       | Custom Business Service  | To be defined later  |
|                       | XSL File Name  | D:\spl\temp\XSL\ORMB_DM_Individual_Consolidated_Bill_Extract.xml |
|                       | Extract Folder for XML generation                              | Extract  |
|                       | Dat Folder for creation of .dat files for external application | Data   |
|                       | Bill Date Format   | MMMM dd, yyyy  |
|                       | Date format for other dates in the Bill                        | MM-dd-yyyy   |
|                       | Minimum Amount Due (Do not enter % sign)                       | NA   |
|                       | Installment Fee (If needed to be displayed on bills)           | NA   |
|                       | Service Agent Role Code  | AGENT  |
|                       | External System Input String                                   | XML_FILE_INPUT   |

10. Bill Route Type – Insurance List Life Bill Extract Implementation Details

Sample algorithm configuration:

|                       |                     |              |
|-----------------------|---------------------|--------------|
| <b>Algorithm Name</b> | <b>CM_INSLSLFBL</b> |              |
| <b>Parameters</b>     | <b>Name</b>         | <b>Value</b> |

|  |  |  |
|--|--|--|
|  | Face Amount Characteristic Code                                | NA   |
|  | Birth Date Characteristic Code                                 | NA   |
|  | Custom Business Service  | To be defined later                                |
|  | XSL File Name  | D:\spl\temp\XSL\ORMB_DM_Life_List_Bill_Extract.xml |
|  | Extract Folder for XML generation                              | Extract  |
|  | Dat Folder for creation of .dat files for external application | Data   |
|  | Bill Date Format   | MMMM dd, yyyy                                      |
|  | Date format for other dates in the Bill                        | MM-dd-yyyy   |
|  | Minimum Amount Due (Do not enter % sign)                       | NA   |
|  | Installment Fee (If needed to be displayed on bills)           | NA   |
|  | Service Agent Role Code  | AGENT  |
|  | External System Input String                                   | XML_FILE_INPUT                                     |

11. Bill Route Type – Insurance List Health Care Bill Extract Implementation Details

Sample algorithm configuration:

|                       |                                 |              |
|-----------------------|---------------------------------|--------------|
| <b>Algorithm Name</b> | <b>CM_INSLSHCBL</b>             |              |
| <b>Parameters</b>     | <b>Name</b>                     | <b>Value</b> |
|                       | Face Amount Characteristic Code | NA           |
|                       | Birth Date                      | NA           |

|  |  |  |
|--|--|--|
|  | Characteristic Code  |  |
|  | Custom Business Service  | To be defined later                                |
|  | XSL File Name  | D:\spl\temp\XSL\ORMB_DM_Life_List_Bill_Extract.xml |
|  | Extract Folder for XML generation                              | Extract  |
|  | Dat Folder for creation of .dat files for external application | Data   |
|  | Bill Date Format   | MMMM dd, yyyy                                      |
|  | Date format for other dates in the Bill                        | MM-dd-yyyy   |
|  | Minimum Amount Due (Do not enter % sign)                       | NA   |
|  | Installment Fee (If needed to be displayed on bills)           | NA   |
|  | Service Agent Role Code  | AGENT  |
|  | External System Input String                                   | XML_FILE_INPUT                                     |

12. Bill Route Type – Insurance Agency List Bill Extract Implementation Details

Sample algorithm configuration:

|                       |                                 |  |
|-----------------------|---------------------------------|--|
| <b>Algorithm Name</b> | <b>CM_INSBKPCBL</b>             |  |
| <b>Parameters</b>     | <b>Name</b>                     | <b>Value</b>                                       |
|                       | Face Amount Characteristic Code | NA   |
|                       | Birth Date Characteristic Code  | NA   |
|                       | Custom Business Service         | To be defined later                                |
|                       | XSL File                        | D:\spl\temp\XSL\ORMB_DM_Life_List_Bill_Extract.xml |

|  |  |                       |
|--|--|-----------------------|
|  | Name   |                       |
|  | Extract Folder for XML generation                              | <b>Extract</b>        |
|  | Dat Folder for creation of .dat files for external application | <b>Data</b>           |
|  | Bill Date Format   | <b>MMMM dd, yyyy</b>  |
|  | Date format for other dates in the Bill                        | <b>MM-dd-yyyy</b>     |
|  | Minimum Amount Due (Do not enter % sign)                       | <b>NA</b>             |
|  | Installment Fee (If needed to be displayed on bills)           | <b>NA</b>             |
|  | Service Agent Role Code  | <b>AGENT</b>          |
|  | External System Input String                                   | <b>XML_FILE_INPUT</b> |

### 13. Banking Bill Extract Algorithm Type

|                             |   |
|-----------------------------|---|
| <b>Algorithm Type</b>       | <b>C1_BNKBILEX</b>  |
| <b>Description</b>          | Banking Bill Extract Algorithm Type   |
| <b>Detailed Description</b> | <p>This algorithm type is created for extracting Banking bills. This will internally invoke six business services to extract the data and transform the same into output data as required by a third party application. Six base business services invoked are C1-BnkBillHeaderExtract, C1-InvoiceSummaryExtract, C1-BnkAcctSmry, C1-BnkServiceSmry,C1-BnkServiceActivityExtract and C1-BnkPriorPerdAdjstmntExtract for extracting Banking Bill Header, Invoice Summary,Account Summary,Service Summary,Service Activity and Prior Period Adjustments for individual and commercial list (IGA) bills. A custom business service can also be configured in case any additional enrichment of the output XML needs to be done. The algorithm program transforms the internal ORMB XML into outbound XML as per the XSL configured on respective algorithms.</p> <ol style="list-style-type: none"> <li>1.Tax Identifier Code: To Identify the Tax Identifier of the Person.</li> <li>2.Tax Component: To Identify the Tax Component at the Bill Calc Line Char.</li> <li>3.Charge Calc Line Characteristic : To identify charges as TAX or DISCOUNT.</li> <li>4.Tax Calc Line Value: To identify charges as TAX.</li> </ol> |

## ORMB-Documaker Integration Guide for Banking and Insurance

|                            |   |                          |   |
|----------------------------|---|--------------------------|---|
|                            | <p>5.Discount Calc Line Value: To identify charges as DISCOUNT.</p> <p>6.Custom Business Service: Name of Custom Business Service for extracting customer specific information.</p> <p>7.XSL File Name For Individual Account : Name of the XSL file along with the path which is used for XML transformation from raw ORMB XML to Documaker XML in case of Individual Account.</p> <p>8.XSL File Name For IGA Account: Name of the XSL file along with the path which is used for XML transformation from raw ORMB XML to Documaker XML in case of IGA Account.</p> <p>9.Extract Folder: Extract folder where the Documaker XML will get extracted after the XSLT.</p> <p>10.Dat Folder: Used by the external system to get the path of extract files.</p> <p>11.Bill Date Format : The date format of invoice date.</p> <p>12.Date Format for other dates in the Bill : Date format for other dates apart from Bill Date.</p> <p>13.External System Input String : Input String for External System from where it will pick up path for extract file.</p> <p>14.SA Characteristic Type : To identify the child contract relationship with parent contract.</p> <p>15.IGA Account Characteristic Type : To identify the IGA Account.</p> <p>16.Charge Characteristic Type : To identify charges char type.</p> <p>17.Exchange Rate Characteristic Type: To identify if any exchange rate present on BillSegment Calc Line Char.</p> <p>18.Pricing Currency Characteristic Type:To identify if the Pricing Currency exists.</p> <p>19.Price Item Relationship Flag: To identify whether the product is under service.</p> |                          |   |
| <b>Invocation point(s)</b> | Bill Route Type   |                          |   |
| <b>Program Type</b>        | Java  |                          |   |
| <b>Name</b>                | com.splwg.ccb.domain.billing.billtransform.BankingBillExtractAlgo   |                          |   |
| <b>Parameters</b>          | <b>Name</b>   | <b>Required (yes/no)</b> | <b>Description</b>  |
|                            | Tax Identifier Code   | No                       | To Identify the Tax Identifier of the Person.             |
|                            | Tax Component   | No                       | To Identify the Tax Component at the Bill Calc Line Char. |
|                            | Charge Calc Line Characteristic   | No                       | To identify charges as TAX or DISCOUNT.                   |

## ORMB-Documaker Integration Guide for Banking and Insurance

|  |   |    |   |
|--|---|----|---|
|  | Tax Calc Line Value                     | No | To identify charges as TAX.   |
|  | Discount Calc Line Value                | No | : To identify charges as DISCOUNT.  |
|  | Custom Business Service                 | No | Name of Custom Business Service for extracting customer specific information.   |
|  | XSL File Name For Individual Account    | No | Name of the XSL file along with the path which is used for XML transformation from raw ORMB XML to Documaker XML in case of Individual Account. |
|  | XSL File Name For IGA Account           | No | Name of the XSL file along with the path which is used for XML transformation from raw ORMB XML to Documaker XML in case of IGA Account.        |
|  | Extract Folder                          | No | Extract folder where the Documaker XML will get extracted after the XSLT.   |
|  | Dat Folder                              | No | Used by the external system to get the path of extract files  |
|  | Bill Date Format                        | No | The date format of invoice date.  |
|  | Date Format for other dates in the Bill | No | Date format for other dates apart from Bill Date.   |
|  | External System Input String            | No | Input String for External System from where it will pick up path for extract file.  |
|  | SA Characteristic Type                  | No | To identify the child contract relationship with parent contract.   |
|  | IGA Account Characteristic Type         | No | To identify the IGA Account.  |
|  | Charge Characteristic Type              | No | To identify charges char type.  |
|  | Exchange Rate Characteristic Type       | No | To identify if any exchange rate present on BillSegment Calc Line Char.   |

|                 |  |    |   |
|-----------------|--|----|---|
|                 | Pricing Currency Characteristic Type   | No | To identify if the Pricing Currency exists.       |
|                 | Price Item Relationship Flag   | No | To identify whether the product is under service. |
| Detailed Design | <p><b>This algorithm invokes business services C1- BnkBillHeaderExtract, C1- InvoiceSummaryExtract, C1- BnkAcctSmry, C1-BnkServiceSmry, C1-BnkServiceActivityExtract and C1-BnkPriorPerdAdjstmntExtract for extracting Bill Header, Invoice Summary, Account Summary, Service Summary,Service Activity and Prior Adjustment Details of individual and IGA Account banking bills.</b></p> |    |   |

#### 14. Bill Route Type – Banking Route Type

Sample algorithm configuration:

|                |   |   |
|----------------|---|---|
| Algorithm Name | <b>CM_BNKBILEX</b>                      |   |
| Parameters     | Name                                    | Value   |
|                | Tax Identifier Code                     | <b>TAXID</b>  |
|                | Tax Component                           | <b>NA</b>   |
|                | Charge Calc Line Characteristic         | <b>CHRG_TYP</b>   |
|                | Tax Calc Line Value                     | <b>TAX</b>  |
|                | Discount Calc Line Value                | <b>DISCOUNT</b>   |
|                | Custom Business Service                 | <b>NA</b>   |
|                | XSL File Name For Individual Account    | <b>D:\V4-Maint\C1\2.2.0\Code\modules\xai\schemas\samples\billTransform\ORMB_DM_Banking_Bill_Extract.xml</b>   |
|                | XSL File Name For IGA Account           | <b>D:\V4-Maint\C1\2.2.0\Code\modules\xai\schemas\samples\billTransform\ORMB_DM_Comm_Banking_List_Bill.xml</b> |
|                | Extract Folder                          | <b>Extract</b>  |
|                | Dat Folder                              | <b>Data</b>   |
|                | Bill Date Format                        | <b>MMMM dd, yyyy</b>  |
|                | Date Format for other dates in the Bill | <b>MM-dd-yyyy</b>   |
|                | External System Input String            | <b>XML_FILE_INPUT</b>   |
|                | SA Characteristic                       | <b>C1_SAFCD</b>   |



|  |                                      |                 |
|--|--------------------------------------|-----------------|
|  | Type                                 |                 |
|  | IGA Account Characteristic Type      | <b>C1_F_IGA</b> |
|  | Charge Characteristic Type           | <b>CUORIGAM</b> |
|  | Exchange Rate Characteristic Type    | <b>EXCHG-RT</b> |
|  | Pricing Currency Characteristic Type | <b>CUPRICCD</b> |
|  | Price Item Relationship Flag         | <b>SVC</b>      |

## 15. Business Services (Insurance)

---

Three base business services invoked are,

- C1-BillHeaderExtract,
- C1-InsAcctSummaryExtract,
- C1-PolicyDetailsExtract

These business services are used for extracting Bill Header, Account Summary and Policy Details for individual and list bills.

A custom business service can also be configured in case any additional enrichment of the output XML needs to be done. The algorithm program transforms the internal ORMB XML into outbound XML as per the XSL configured on respective algorithms.

## 16. Business Services (Banking)

---

Three base business services invoked are,

- C1-BnkBillHeaderExtract,
- C1-InvoiceSummaryExtract,
- C1-BnkAcctSmry
- C1-BnkServiceSmry,
- C1-BnkServiceActivityExtract,
- C1-BnkPriorPerdAdjstmntExtract

These business services are used for extracting Bill Header, Invoice Summary, IGA Account Summary, Service Summary, and Service Activity and Prior Period Adjustments for Individual and IGA account bills.

A custom business service can also be configured in case any additional enrichment of the output XML needs to be done. The algorithm program transforms the internal ORMB XML into outbound XML as per the XSL configured on respective algorithms.

17. Business Service for extracting Bill Header Information

|                             |  |
|-----------------------------|--|
| <b>Name</b>                 | <b>C1-BillHeaderExtract</b>  |
| <b>Description</b>          | Business Service for extracting Bill Header Information  |
| <b>Detailed Description</b> | This Business Service extracts bill's account owner details having financial responsibility. This business service can be invoked independently from any component incase bill header details are required. It expects billId (BILL_ID), processDateFormat (PB_PROCESS_DATE_FRMT) and billDatesFormat (BILL_DATE_FORMAT) to be set by the calling program. The processDateFormat is used to format Bill Date and billDatesFormat is used to format all other dates in the bill header extract.   |
| <b>Invocation point(s)</b>  | <b>C1_INSINLFBL, C1_INSINHCBL, C1_INSINPCBL, C1_INSINCSBL, C1_INSLSLFBL, C1_INSLSHCBL, C1_INSBKPCBL</b>  |
| <b>Detailed Design</b>      | Following service program will be used<br><br>com.splwg.ccb.domain.billing.billtransform. InsuranceBillHeaderExtract   |
| <b>Schema</b>               | <pre> &lt;schema&gt;   &lt;billId mapField="BILL_ID"/&gt;   &lt;processDateFormat mapField="PB_PROCESS_DATE_FRMT"/&gt;   &lt;billDatesFormat mapField="BILL_DATE_FORMAT"/&gt;   &lt;customerAcctNum mapField="ACCT_ID"/&gt;   &lt;processDtOrgnl mapField="BILL_DT"/&gt;   &lt;billDueDtOrgnl mapField="DUE_DT"/&gt;   &lt;paymentMd mapField="BILL_CYC_CD"/&gt;   &lt;frmtDProcessDt mapField="PB_BILL_DT"/&gt;   &lt;frmtDBillDueDt mapField="PB_DUE_DT"/&gt;   &lt;payerFullNm mapField="ENTITY_NAME"/&gt;   &lt;payerAddress1 mapField="ADDRESS1"/&gt;   &lt;payerAddress2 mapField="ADDRESS2"/&gt;   &lt;payerAddress3 mapField="ADDRESS3"/&gt;   &lt;city mapField="CITY"/&gt;   &lt;state mapField="STATE"/&gt;   &lt;primaryIdType mapField="ID_TYPE_CD"/&gt;   &lt;primaryIdNbr mapField="PER_ID_NBR"/&gt;   &lt;billStartDt mapField="PB_START_DT"/&gt;   &lt;billEndDt mapField="PB_END_DT"/&gt; &lt;/schema&gt; </pre> |

18. Business Service for extracting Policy Details for Insurance Bills

|                             |   |
|-----------------------------|---|
| <b>Name</b>                 | <b>C1-PolicyDetailsExtract</b>  |
| <b>Description</b>          | Business Service for extracting Policy Details for Insurance Bills  |
| <b>Detailed Description</b> | This business service will extract policy details along with Service Agent Details for all the policies corresponding to a particular bill. This is independent of any particular insurance LOB and also computes commission and endorsement fee corresponding to respective policies. It expects billId (BILL_ID) and billDatesFormat (BILL_DATE_FORMAT) to be set from any calling program. The dateformat will be used to set dateformat as per the expected output format. This will cater to individual as well as list bills. |
| <b>Invocation point(s)</b>  | <b>C1_INSINLFBL, C1_INSINHCBL, C1_INSINPCBL, C1_INSINCSBL, C1_INSLSLFBL, C1_INSLSHCBL, C1_INSBKPCBL</b>   |

|                               |  |
|-------------------------------|--|
| <p><b>Detailed Design</b></p> | <p>Following service program will be used</p> <p>com.splwg.ccb.domain.billing.billtransform.PolicyDetailsExtract</p>   |
| <p><b>Schema</b></p>          | <pre> &lt;schema&gt;   &lt;billId mapField="BILL_ID"/&gt;   &lt;billDatesFormat mapField="BILL_DATE_FORMAT"/&gt;   &lt;billGrossPremiumDueAmt mapField="PB_GROSS_PRM_AMT"/&gt;   &lt;billNetPremiumDueAmt mapField="PB_CUR_BIL_NT_CHRG"/&gt;   &lt;billCommAmt mapField="PB_COMM_AMT"/&gt;   &lt;billEndorsementFee mapField="PB_ENDORSMNT_FEE"/&gt;   &lt;birthDtCharCd mapField="PB_BIRTH_DAT_CHAR_CD"/&gt;   &lt;faceAmtCharCd mapField="PB_FACE_AMT_CHAR_CD"/&gt;   &lt;agentRoleCd mapField="POLICY_PER_ROLE_CD"/&gt;   &lt;policyDtls type="list" mapList="PB_POLICY"&gt;     &lt;lobFlg mapField="LOB_FLG"/&gt;     &lt;policyType mapField="POLICY_TYPE"/&gt;     &lt;policyNbr mapField="POLICY_NBR"/&gt;     &lt;policyId mapField="POLICY_ID"/&gt;     &lt;contractId mapField="SA_ID"/&gt;     &lt;policyStartDt mapField="PB_POLICY_START_DT"/&gt;     &lt;policyEndDt mapField="PB_POLICY_END_DT"/&gt;     &lt;policyBillStartDt mapField="PB_START_DT"/&gt;     &lt;policyBillEndDt mapField="PB_END_DT"/&gt;     &lt;policyDesc mapField="POLICY_DESC"/&gt;     &lt;policyStatus mapField="POLICY_STATUS"/&gt;     &lt;birthDt mapField="DATE_OF_BIRTH"/&gt;     &lt;insuredAmt mapField="FACE_AMOUNT"/&gt;     &lt;insuredNm mapField="ENTITY_NAME"/&gt;     &lt;primaryIdType mapField="ID_TYPE_CD"/&gt;     &lt;primaryIdNbr mapField="PER_ID_NBR"/&gt;     &lt;premiumDueAmt mapField="PB_POL_PREM_AMT"/&gt;     &lt;policyChrgs mapField="PB_CUR_BILL_CHRGs"/&gt;     &lt;policyCorrectionAmt mapField="PB_CURR_BILL_CORR_AMT"/&gt;     &lt;policyAdstmntAmt mapField="PB_CUR_BILL_ADJST"/&gt;     &lt;policyNetAdstmntAmt mapField="PB_CUR_BILL_NT_ADJST"/&gt;     &lt;policyEndorsementFee mapField="PB_ENDORSMNT_FEE"/&gt;     &lt;policyCommRate mapField="COMM_PERC_LBL"/&gt;     &lt;policyCommVal mapField="PB_COMM_AMT"/&gt;     &lt;policyGrossPremiumAmt mapField="PB_GROSS_PRM_AMT"/&gt;   &lt;srvcAgnt type="list" mapList="SERVICE_AGENT"&gt;     &lt;serviceAgentFullNm mapField="ENTITY_NAME"/&gt;     &lt;serviceAgentAdd1 mapField="ADDRESS1"/&gt;     &lt;serviceAgentAdd2 mapField="ADDRESS2"/&gt;     &lt;serviceAgentAdd3 mapField="ADDRESS3"/&gt;     &lt;city mapField="CITY"/&gt;     &lt;state mapField="STATE"/&gt;   &lt;/srvcAgnt&gt;   &lt;billSegRecrds type="list" mapList="CI_BSEG_CALC"&gt;     &lt;billSegDesc mapField="DESCR_ON_BILL"/&gt;     &lt;billSegChrgAmt mapField="BSEG_CALC_AMT"/&gt;     &lt;billChgTyp mapField="DESCR"/&gt;     &lt;billSegStrtDt mapField="START_DT"/&gt;     &lt;billSegEndDt mapField="END_DT"/&gt;     &lt;frmtDbillSegStrtDt mapField="PB_START_DT"/&gt;     &lt;frmtDbillSegEndDt mapField="PB_END_DT"/&gt; </pre> |

|  |   |
|--|---|
|  | <pre> &lt;/billSegRecrds&gt; &lt;/policyDtls&gt; &lt;/schema&gt; </pre> |
|--|---|

19. Business Service for extracting Account Summary Details for Insurance Bills

|                             |  |
|-----------------------------|--|
| <b>Name</b>                 | <b>C1-InsAcctSummaryExtract</b>  |
| <b>Description</b>          | Business Service for extracting Account Summary Details for Insurance Bills  |
| <b>Detailed Description</b> | This business service will extract account summary details for Insurance bills both individual and list. This will compute all the data for current bill and that required since previous bill. It expects calling program to set billId (BILL_ID) and billDatesFormat (BILL_DATE_FORMAT).   |
| <b>Invocation point(s)</b>  | <b>C1_INSINLFBL, C1_INSINHCBL, C1_INSINPCBL, C1_INSINCSBL, C1_INSLSLFBL, C1_INSLSHCBL, C1_INSBKPCBL</b>  |
| <b>Detailed Design</b>      | Following service program will be used<br><br>com.splwg.ccb.domain.billing.billtransform. AccountSmmaryExtract   |
| <b>Schema</b>               | <pre> &lt;schema&gt;   &lt;billId mapField="BILL_ID"/&gt;   &lt;previousBillAmt mapField="PB_PREV_BILL_DUE_AMT"/&gt;   &lt;previousPayments mapField="PB_PREV_PAYMNTS"/&gt;   &lt;openingBal mapField="PB_OPEN_BAL"/&gt;   &lt;currChrg mapField="PB_CUR_BILL_CHRG"/&gt;   &lt;currCorrections mapField="PB_CUR_BILL_CORR_AMT"/&gt;   &lt;currAdjstmnts mapField="PB_CUR_BILL_ADJST"/&gt;   &lt;otrAdjstmnts mapField="PB_CUR_BILL_NT_ADJST"/&gt;   &lt;netChrg mapField="PB_CUR_BIL_NT_CHRG"/&gt;   &lt;netAmtDue mapField="PB_CUR_BILL_NT_AMT_DUE"/&gt;   &lt;minDueAmt mapField="PB_MIN_DUE_AMT"/&gt;   &lt;installmntFee mapField="PB_INSTMNT_AMT"/&gt;   &lt;lastPymntDt mapField="PB_LAST_PYMNT_DT"/&gt;   &lt;billDatesFormat mapField="BILL_DATE_FORMAT"/&gt; &lt;/schema&gt; </pre> |

20. Business Service for extracting Bill Header Details for Banking Bills

|                             |  |
|-----------------------------|--|
| <b>Name</b>                 | <b>C1-BnkBillHeaderExtract</b>   |
| <b>Description</b>          | Bill Header Extract Business Service for Banking Bills   |
| <b>Detailed Description</b> | This Business Service extracts bil's account ownerl details having financial responsibility. This business service can be invoked independently from any component incase bill header details are required. It expects billId (BILL_ID), processDateFormat (PB_PROCESS_DATE_FRMT) and billDatesFormat (BILL_DATE_FORMAT) to be set by the calling program. The processDateFormat is used to format Bill Date and billDatesFormat is used to format all other dates in the bill header extract. |
| <b>Invocation point(s)</b>  | C1_BNKBLEX   |

|                        |  |
|------------------------|--|
| <b>Detailed Design</b> | <p>Following service program will be used</p> <p>com.splwg.ccb.domain.billing.billtransform. BankingBillHeaderExtract</p>  |
| <b>Schema</b>          | <pre> &lt;schema&gt;   &lt;billId mapField="BILL_ID"/&gt;   &lt;seqBillNumber mapField="ALT_BILL_ID"/&gt;   &lt;idType mapField="ID_TYPE_CD"/&gt;   &lt;processDateFormat mapField="PB_PROCESS_DATE_FRMT"/&gt;   &lt;billDatesFormat mapField="BILL_DATE_FORMAT"/&gt;   &lt;processDtOrgnl mapField="BILL_DT"/&gt;   &lt;frmtDProcessDt mapField="PB_BILL_DT"/&gt;   &lt;personDtls type="list" mapList="PER_TYPE_DTLS"&gt;     &lt;payerFullNm mapField="ENTITY_NAME"/&gt;     &lt;idNbr mapField="PER_ID_NBR"/&gt;     &lt;idType mapField="ID_TYPE_CD"/&gt;     &lt;isPrimaryId mapField="PRIM_SW"/&gt;     &lt;isPrimaryName mapField="PRIM_NAME_SW"/&gt;     &lt;personId mapField="PER_ID"/&gt;   &lt;/personDtls&gt;   &lt;billStartDt mapField="PB_START_DT"/&gt;   &lt;billEndDt mapField="PB_END_DT"/&gt; &lt;/schema&gt; </pre> |

21. Business Service for extracting Invoice Summary for Banking Bills

|                             |   |
|-----------------------------|---|
| <b>Name</b>                 | <b>C1-InvoiceSummaryExtract</b>   |
| <b>Description</b>          | Business Service for extracting Invoice Summary Details   |
| <b>Detailed Description</b> | This business service will extract account summary details for Insurance bills both individual and list. This will compute all the data for current bill and that required since previous bill. It expects calling program to set billId (BILL_ID) and billDatesFormat (BILL_DATE_FORMAT).  |
| <b>Invocation point(s)</b>  | C1_BNKBLEX  |
| <b>Detailed Design</b>      | Following service program will be used<br><br>com.splwg.ccb.domain.billing.billtransform. BankingInvoiceSummaryExtract  |
| <b>Schema</b>               | <pre> &lt;schema&gt;   &lt;billId mapField="BILL_ID"/&gt;   &lt;langCd mapField="LANGUAGE_CD"/&gt;   &lt;chrgCharType mapField="CHRG_CHAR_TYPE"/&gt;   &lt;taxCalcVal mapField="TAX_CHAR_VALUE"/&gt;   &lt;disCalcVal mapField="DIS_CHAR_VALUE"/&gt;   &lt;saCharType mapField="SA_CHAR_TYPE"/&gt;   &lt;isIga mapField="IS_IGA"/&gt;   &lt;currChrg mapField="PB_CUR_BILL_CHRGS"/&gt;   &lt;totalTaxes mapField="PB_TOTAL_TAXES_AMT"/&gt;   &lt;credits mapField="CREDITS"/&gt;   &lt;totalDiscounts mapField="PB_TOTAL_DISC_AMT"/&gt;   &lt;currCorrections mapField="PB_CURR_BILL_CORR_AMT"/&gt;   &lt;currAdjstmnts mapField="PB_CUR_BILL_ADJST"/&gt;   &lt;currency mapField="CURRENCY"/&gt;   &lt;netAmtDue mapField="PB_CURR_BILL_NT_AMT_DUE"/&gt;   &lt;previousBillDtls type="list" mapList="PB_PREV_BILL_DTLS"&gt;     &lt;previousBillAmt mapField="PB_PREV_BILL_DUE_AMT"/&gt;     &lt;previousPayments mapField="PB_PREV_PAYMNTS"/&gt;     &lt;openingBal mapField="PB_OPEN_BAL"/&gt;     &lt;prevCurrency mapField="CURRENCY_CD"/&gt;   &lt;/previousBillDtls&gt;   &lt;childAcctDtls type="list" mapList="PB_CHILD_ACT_DTLS"&gt;     &lt;primCustId mapField="PER_ID_NBR"/&gt;     &lt;primAcctIdent mapField="ACCT_NBR"/&gt;   &lt;/childAcctDtls&gt;   &lt;billMessages type="list" mapList="BILL_MESSAGE"&gt;     &lt;comments1 mapField="DESCR"/&gt;     &lt;messagePriority mapField="MSG_PRIORITY_FLG"/&gt;   &lt;/billMessages&gt;   &lt;custAddress1 mapField="ADDRESS1"/&gt;   &lt;custAddress2 mapField="ADDRESS2"/&gt;   &lt;custAddress3 mapField="ADDRESS3"/&gt;   &lt;custCity mapField="CITY"/&gt;   &lt;custState mapField="STATE"/&gt;   &lt;custPostal mapField="POSTAL"/&gt;   &lt;custCountry mapField="COUNTRY"/&gt;   &lt;branchCd mapField="CIS_DIVISION"/&gt;   &lt;branchInfoLine1 mapField="DESCR"/&gt;   &lt;branchInfoLine2 mapField="COMMENTS"/&gt; &lt;/schema&gt; </pre> |

22. Business Service for extracting Account Summary Details for Banking Bills

|                             |  |
|-----------------------------|--|
| <b>Name</b>                 | <b>C1-BnkAcctSmry</b>  |
| <b>Description</b>          | Business Service for extracting Account Summary Details for Bills  |
| <b>Detailed Description</b> | This business service will extract account summary details for Banking bills for IGA accounts. This will compute all the data for current bill and that required since previous bill. It expects calling program to send billId (BILL_ID), Tax Characteristic Type (TAX_CHAR_TYPE), Tax Characteristic Value(TAX_CHAR_VALUE) and billDatesFormat (BILL_DATE_FORMAT).   |
| <b>Invocation point(s)</b>  | C1_BNKBLEX   |
| <b>Detailed Design</b>      | Following service program will be used<br><br>com.splwg.ccb.domain.billing.billtransform. BankingAccountSummaryExtract   |
| <b>Schema</b>               | <pre> &lt;schema&gt;   &lt;billId mapField="BILL_ID"/&gt;   &lt;chrgCharType mapField="TAX_CHAR_TYPE"/&gt;   &lt;taxCalcVal mapField="TAX_CHAR_VALUE"/&gt;   &lt;saCharType mapField="SA_CHAR_TYPE"/&gt;   &lt;isIga mapField="IS_IGA"/&gt;   &lt;acctSumm type="list" mapList="ACCT_SUMM"&gt;     &lt;accountNumber mapField="ACCOUNT_NUMBER"/&gt;     &lt;currency mapField="CURRENCY"/&gt;     &lt;prevAmtDue mapField="PREV_AMT_DUE"/&gt;     &lt;pymtsInCurrPeriod mapField="PYMTS_IN_CURR_PERIOD"/&gt;     &lt;currPeriodChgs mapField="CURR_PERIOD_CHGS"/&gt;     &lt;credits mapField="CREDITS"/&gt;     &lt;adjustments mapField="ADJUSTMENTS"/&gt;     &lt;taxes mapField="TAXES"/&gt;     &lt;totalDue mapField="TOTAL_DUE"/&gt;   &lt;/acctSumm&gt; &lt;/schema&gt; </pre> |

23. Business Service for extracting Service Summary Details for Banking Bills

|                             |  |
|-----------------------------|--|
| <b>Name</b>                 | <b>C1-BnkServiceSmry</b>   |
| <b>Description</b>          | Business Service for extracting Service Summary Details for Banking Bills  |
| <b>Detailed Description</b> | This business service will extract account summary details for Insurance bills both individual and list. This will compute all the data for current bill and that required since previous bill. It expects calling program to set billId (BILL_ID) and billDatesFormat (BILL_DATE_FORMAT). |
| <b>Invocation point(s)</b>  | C1_BNKBLEX   |
| <b>Detailed Design</b>      | Following service program will be used<br><br>com.splwg.ccb.domain.billing.billtransform. BankingServiceSummaryExtract   |
| <b>Schema</b>               | <pre> &lt;schema&gt;   &lt;billId mapField="BILL_ID"/&gt;   &lt;chrgCharType mapField="TAX_CHAR_TYPE"/&gt;   &lt;taxCalcVal mapField="TAX_CHAR_VALUE"/&gt;   &lt;saCharType mapField="SA_CHAR_TYPE"/&gt; </pre>  |

|  |   |
|--|---|
|  | <pre> &lt;priceItemRelFlag mapField="PRCE_ITM_REL_FLG"/&gt; &lt;langCd mapField="LANGUAGE_CD"/&gt; &lt;srvcSumm type="list" mapList="SRVC_SUMM"&gt;   &lt;accountNumber mapField="ACCOUNT_NUMBER"/&gt;   &lt;currency mapField="CURRENCY"/&gt;   &lt;srvcChgs type="list" mapList="SRVC_CHGS"&gt;     &lt;service mapField="SERVICE"/&gt;     &lt;prodChgs mapField="PROD_CHGS"/&gt;   &lt;/srvcChgs&gt;   &lt;totalAcctChgs mapField="TOTAL_ACCT_CHGS"/&gt;   &lt;totalTaxes mapField="TOTAL_TAXES"/&gt;   &lt;totalCurrPeriodChgs mapField="TOTAL_CURR_PERIOD_CHGS"/&gt; &lt;/srvcSumm&gt; &lt;/schema&gt; </pre> |
|--|---|

**24. Business Service for extracting Service Activity Details for Banking Bills**

|                             |  |
|-----------------------------|--|
| <b>Name</b>                 | <b>C1-BnkServiceActivityExtract</b>  |
| <b>Description</b>          | Business Service for extracting Service Activity Details for Banking Bills   |
| <b>Detailed Description</b> | This business service will extract service activity details for banking bills both individual and list. This will compute all the data for current bill. It expects calling program to set billId (BILL_ID).   |
| <b>Invocation point(s)</b>  | C1_BNKBLEX   |
| <b>Detailed Design</b>      | Following service program will be used<br><br>com.splwg.ccb.domain.billing.billtransform. BankingServiceActivityExtract  |
| <b>Schema</b>               | <pre> &lt;schema&gt;   &lt;billId mapField="BILL_ID"/&gt;   &lt;chrgCharType mapField="CHRG_CHAR_TYPE"/&gt;   &lt;taxCalcVal mapField="TAX_CHAR_VALUE"/&gt;   &lt;saCharType mapField="SA_CHAR_TYPE"/&gt;   &lt;chargeCharType mapField="SERVC_CHARG_CHAR_TYPE"/&gt;   &lt;exchgRtCharType mapField="EXCHG_RT_CHAR_TYPE"/&gt;   &lt;pricngCurrCharType mapField="PRICNG_CUR_CHAR_TYPE"/&gt;   &lt;priceItemRelFlag mapField="PRCE_ITM_REL_FLG"/&gt;   &lt;langCd mapField="LANGUAGE_CD"/&gt;   &lt;serviceActivityDtls type="list" mapList="SERVICE_ACTIVITY_DTLS"&gt;     &lt;accountNumber mapField="ACCT_NBR"/&gt;     &lt;accountId mapField="ACCT_ID"/&gt;     &lt;serviceDetail type="list" mapList="SERVICE_LIST"&gt;       &lt;serviceName mapField="SERVICE_NAME"/&gt;       &lt;productDetail type="list" mapList="PRODUCT_LIST"&gt;         &lt;priceItemCode mapField="PRICEITEM_CD"/&gt;         &lt;pricingMethod mapField="PRICING_METHOD"/&gt;         &lt;unitPrice mapField="UNIT_PRICE"/&gt;         &lt;volume mapField="VOLUME"/&gt;         &lt;charge mapField="PRICING_AMOUNT"/&gt;         &lt;exchangeRate mapField="EX_RT_ADHOC_CHAR_VAL"/&gt;         &lt;pricingCurrency mapField="PR_CUR_ADHOC_CHAR_VAL"/&gt;         &lt;currency mapField="CURRENCY_CD"/&gt;         &lt;invoiceTotal mapField="INVOICE_TOTAL"/&gt;       &lt;/productDetail&gt;     &lt;/serviceDetail&gt;   &lt;/serviceActivityDtls&gt;   &lt;subTotal mapField="SUB_TOTAL"/&gt; &lt;/schema&gt; </pre> |



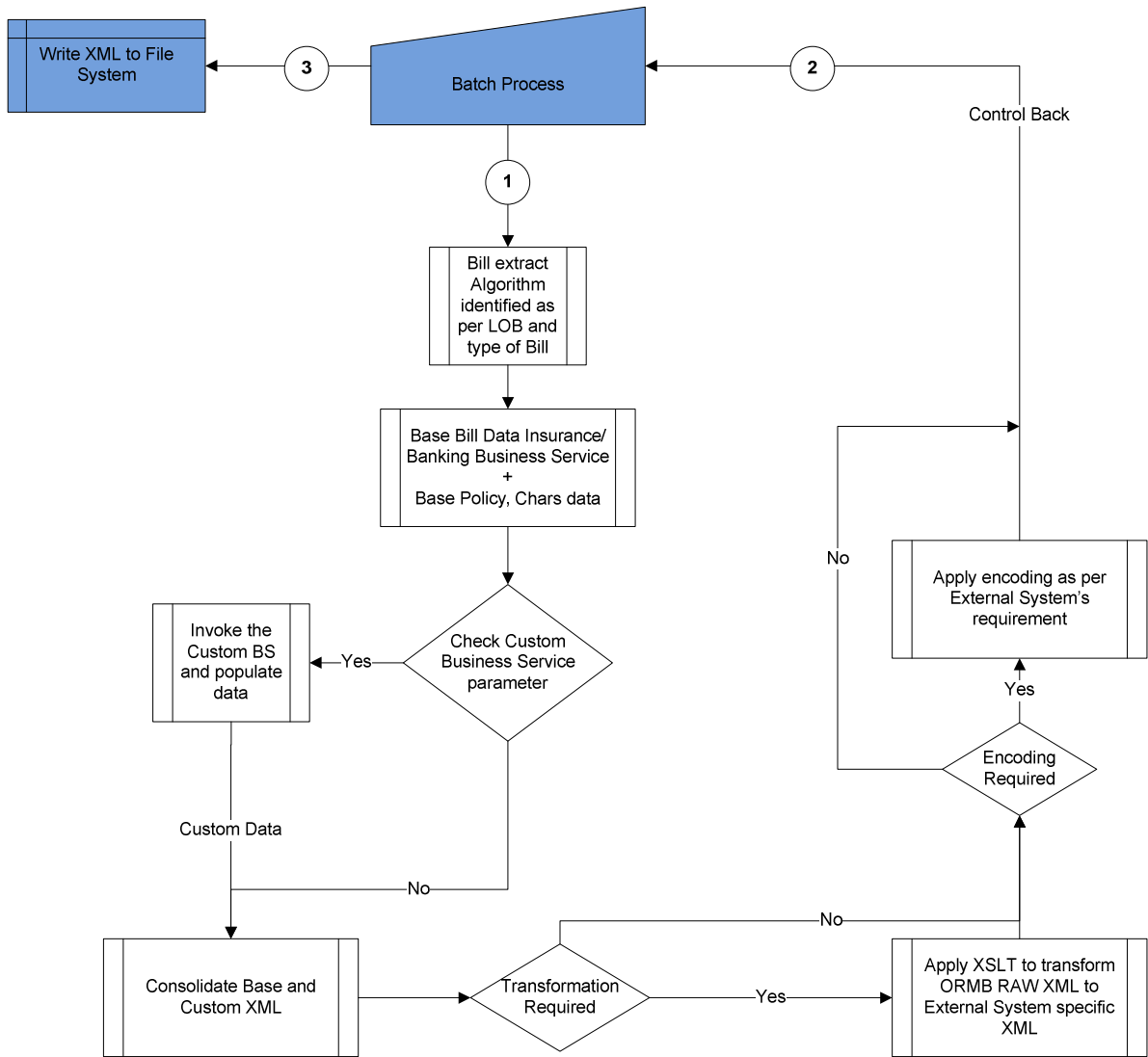
|  |   |
|--|---|
|  | <pre> &lt;/serviceDetail&gt; &lt;totTaxCharges mapField="TOT_TAXABLE_CHRG"/&gt; &lt;totNonTaxCharges mapField="TOT_NON_TAX_CHRG"/&gt; &lt;totCharges mapField="TOT_CHRGS"/&gt; &lt;totTaxesInvoiceCurr mapField="TOT_TAX_INVOICE_CURR"/&gt; &lt;/serviceActivityDtls&gt; &lt;/schema&gt; </pre> |
|--|---|

**25. Business Service for extracting Prior Period Adjustment Details for Banking Bills**

---

|                             |   |
|-----------------------------|---|
| <b>Name</b>                 | <b>C1-BnkPriorPerdAdjstmntExtract</b>   |
| <b>Description</b>          | Business Service for Banking Prior Period Adjustments Details for Banking Bills   |
| <b>Detailed Description</b> | This business service will extract prior period adjustment details for banking bills both individual and list. This will compute all the data for current bill. It expects calling program to set billId (BILL_ID) and SA Characteristic Type.  |
| <b>Invocation point(s)</b>  | C1_BNKBLEX  |
| <b>Detailed Design</b>      | <p>Following service program will be used</p> <p>com.splwg.ccb.domain.billing.billtransform. BankingPriorAdjustmentsExtract</p>   |
| <b>Schema</b>               | <pre> &lt;schema&gt; &lt;billId mapField="BILL_ID"/&gt; &lt;langCd mapField="LANGUAGE_CD"/&gt; &lt;saCharType mapField="SA_CHAR_TYPE"/&gt; &lt;accountDtls type="list" mapList="ACCOUNT_DTLS"&gt; &lt;accountNumber mapField="ACCT_NBR"/&gt; &lt;accountId mapField="ACCT_ID"/&gt; &lt;adjustmentDtls type="list" mapList="ADJSTMNT_DTLS"&gt; &lt;descr mapField="DESCR"/&gt; &lt;charge mapField="ADJUSTMENTS"/&gt; &lt;currency mapField="CURRENCY_CD"/&gt; &lt;/adjustmentDtls&gt; &lt;/accountDtls&gt; &lt;/schema&gt; </pre> |

26. Batch Bill Process Flow



Refer Section 33 for batch control information.

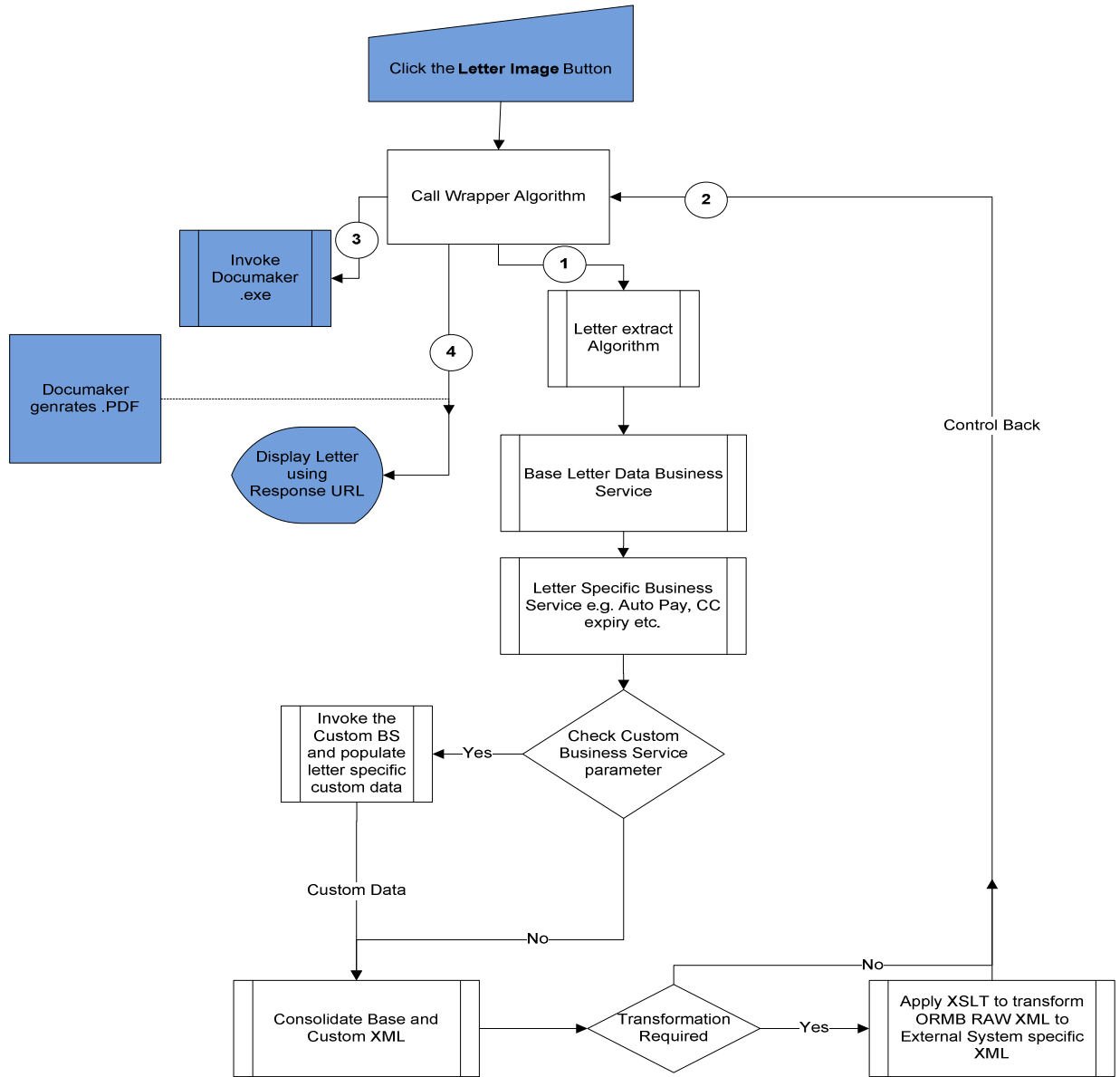
# Chapter 3: Integration process for Letters:

Step 1: On click of “Display Letter” button, ORMB extracts the letter information and generates an XML corresponding to formats required by the Documaker templates. The XML message is then sent to Documaker.

Step 2: Documaker will format and will generate a PDF file.

Step 3: ORMB will receive the PDF and will display the PDF file in a separate browser window.

A wrapper algorithm ‘C1\_XLETOLALG’ is defined in installation option framework for the online letter display.



## ORMB-Documaker Integration Guide for Banking and Insurance

Based on Insurance letter extract Algorithm Type (**C1-LETXTALG**) An algorithm 'CM\_XLETOLALG' is used as wrapper algorithm.

The algorithm will identify the extract algorithm based on the letter template defined with customer contact type.

Each letter template is associated with the extract algorithm.

Following table shows list of extract algorithms for each letter types

| Customer Contact Type                  | Letter Template                            | Batch Control | Extract Algorithm   |
|--|--|---------------|---|
| AUTOPAY Auto Pay source Change         | AUTO-PAY-CHG<br>(Auto Pay Change)          | LTRPRT        | CM_XLETETAU<br>(Letter Extract Algorithm for Auto Pay changes.) |
| CREDIT CARD Expiry Correspondence      | CC-EXP-TMPL<br>(Credit Card Expiry Letter) | LTRPRT        | CM_XLETETCC<br>(Algorithm for credit card expiry letters.)      |
| OD REMIND Past Due Letter              | C1-OVR-DUE<br>(Over Due Template)          | LTRPRT        | CM_XLETETPD<br>(Letter Extract Algorithm for past due letters.) |
| NOTICE_CNCL Notice of Intent to Cancel | C1-NI-TMPL<br>(Notice of Intent Letter)    | LTRPRT        | CM_XLETETNI<br>(Letter Extract for notice of intent letters.)   |

Following table shows list of Customer Contact Type settings

| Contact Type | Contact Class                | Description                       | Contact Action | Letter Template                            | Characteristics  |
|--------------|------------------------------|-----------------------------------|----------------|--|--|
| AUTOPAY      | AUPC<br>(Auto Pay)           | Auto Pay source Change            | Send Letter    | AUTO-PAY-CHG<br>(Auto Pay Change)          | Auto Pay Characteristics on Account<br>(Required : YES)  |
| CCEX         | CCEX<br>(Credit Card Expiry) | Credit Card Expiry Correspondence | Send Letter    | CC-EXP-TMPL<br>(Credit Card Expiry Letter) | 1.Name on File for Credit Card Expiry Customer Contact<br>(Required : YES)<br>2.Expiration Date for Credit Card Expiry Customer Contact<br>(Required : YES)<br>3.Account |

## ORMB-Documaker Integration Guide for Banking and Insurance

|             |   |                                   |             |   |  |
|-------------|---|-----------------------------------|-------------|---|--|
|             |   |                                   |             |   | Number for Credit Card Expiry Customer Contact<br>(Required : YES) |
| OD REMIND   | C&C<br>(Credit and collection contacts) | Past Due Letter                   | Send Letter | C1-OVR-DUE<br>(Over Due Template)       | NIL  |
| NOTICE_CNCL | C&C<br>(Credit and collection contacts) | Notice of Intent to Cancel Letter | Send Letter | C1-NI-TMPL<br>(Notice of Intent Letter) | NIL  |

Following table shows list of new Algorithm types, algorithm entities and algorithms which can be created during implementation.

| Algorithm Entity                   | Algorithm Type | Algorithm    |
|------------------------------------|----------------|--------------|
| Installation – Online Letter Image | C1_XLETOLALG   | CM_XLETOLALG |
| Letter Template –Letter Extract    | C1-LETXTALG    | CM_XLETEXTAU |
| Letter Template –Letter Extract    | C1-LETXTALG    | CM_XLETEXTCC |
| Letter Template –Letter Extract    | C1-LETXTALG    | CM_XLETEXTPD |
| Letter Template –Letter Extract    | C1-LETXTALG    | CM_XLETEXTNI |

Following characteristic types are required for configuring algorithms for letter extraction.

| Char Code | Description   | Type  | Characteristic Entity |
|-----------|---|---|-----------------------|
| CCID      | Customer Contact Id                                     | Foreign Key Value (FK Reference – Customer Contact) | Overdue Process Log   |
| C1_AUPC   | Auto Pay Characteristic for Account                     | Adhoc Value   | Customer Contact      |
| C1-CCACT  | Account Number for Credit Card Expiry Customer Contact  | Adhoc Value   | Customer Contact      |
| C1-CCDT   | Expiration Date for Credit Card Expiry Customer Contact | Adhoc Value (Date Type)                             | Customer Contact      |

## ORMB-Documaker Integration Guide for Banking and Insurance

|         |   |   |  |
|---------|---|---|--|
| C1-CCNM | Name on File for Credit Card Expiry<br>Customer Contact | Adhoc Value                                 | Customer Contact                                     |
| OVDBILL | Bill ID   | Foreign Key Value (FK Reference – C1-BLACT) | Overdue Process Log<br>Overdue Process Collecting On |

### 27. Online Letter Image - Implementation Details

This algorithm type is created for Oracle Documaker.

|                             |  |                          |  |
|-----------------------------|--|--------------------------|--|
| <b>Algorithm Type</b>       | <b>C1_XLETOLALG</b>  |                          |  |
| <b>Description</b>          | Wrapper Algorithm Type for Online Letter Display   |                          |  |
| <b>Detailed Description</b> | This Wrapper algorithm will internally call letter extract algorithm as per the Letter Template configuration. It will invoke external system interface to send request to external system. It will extract URL from the response and present letter online. |                          |  |
| <b>Invocation point(s)</b>  | Installation Options – Framework(Online Letter Image)  |                          |  |
| <b>Program Type</b>         | Java   |                          |  |
| <b>Name</b>                 | com.splwg.ccb.domain.admin.letterTemplate.OnlineLetterDisplayAlgo  |                          |  |
| <b>Parameters</b>           | <b>Name</b>  | <b>Required (yes/no)</b> | <b>Description</b>   |
|                             | File Path  | No                       | File path where all the XSL, PDF Extract and Data files will be present. |
|                             | Encoding Class Name  | No                       | Class Name to encode outbound XML.                                       |
|                             | Outbound Message Type  | No                       | Use Outbound message BO created above                                    |
|                             | External System  | No                       | External system to be configured as per interface of external System.    |
|                             | Outbound Message B O   | No                       | Use existing MO (F1-OUTMSG) and default Application Service (F1-DFLTS)   |
|                             | Output File Path   | No                       | Name of the file path where pdf will be generated.                       |
|                             | Data Folder Name   | No                       | Used by the external system to get the path of extract files.            |
|                             | Bat file for RMB   | No                       | Bat file name for  |

|                        |   |    |  |
|------------------------|---|----|--|
|                        |   |    | converting documaker extract xml files into pdf.                           |
|                        | Output HTTP URL   | No | URL name where output pdf will be displayed.                               |
|                        | Bill View Folder  | No | Bill View Folder name where the final pdf will get stored.                 |
|                        | Sleep Time  | No | Sleep time needs to be configured in case of integration using executable. |
| <b>Detailed Design</b> | <b>The Online Letter Image Wrapper Algorithm will be using separate Algorithm Type as C1_XLETOLALG. This Wrapper Algorithm will call specific Letter Extract Algorithm according to the Letter Template configured on Customer Contact.</b> |    |  |

## 28. Online Letter Image Algorithm

Sample algorithm configuration:

|                       |                              |  |
|-----------------------|------------------------------|--|
| <b>Algorithm Name</b> | <b>CM_XLETOLALG</b>          |  |
| <b>Parameters</b>     | <b>Name</b>                  | <b>Value</b>   |
|                       | File Path                    | D:/spl/temp/   |
|                       | Encoding Class Name          | To be defined later                                    |
|                       | Outbound Message Type        | Not used in this release                               |
|                       | External System              | Not used in this release                               |
|                       | Outbound Message BO          | Not used in this release                               |
|                       | Output File Path             | D:\spl\C1\2.2.0\Code\modules\web\dist\root\billview    |
|                       | Data Folder Name             | Data   |
|                       | Bat file for RMB             | D:\spl\documaker\12.0\Alamere\INPUT\rmbOnlinePrint.bat |
|                       | Output HTTP URL              | http://localhost:8131/spl/                             |
|                       | Bill View Folder             | billview   |
|                       | Sleep Time (in milliseconds) | 5000   |

## 29. Letter Template – Letter Extract Implementation Details

This algorithm type is created for Oracle Documaker.

ORMB-Documaker Integration Guide for Banking and Insurance

|                             |   |                          |  |
|-----------------------------|---|--------------------------|--|
| <b>Algorithm Type</b>       | <b>C1-LETXTALG</b>  |                          |  |
| <b>Description</b>          | Letter Extract Algorithm for letter changes.  |                          |  |
| <b>Detailed Description</b> | Letter Extract Algorithm Type for extracting letter records from RMB for different types of Auto Pay changes, Credit Card expiry, Past due and Notice of Intent to Cancel letters and transform the message to outbound message format. |                          |  |
| <b>Invocation point(s)</b>  | Letter Template   |                          |  |
| <b>Program Type</b>         | Java  |                          |  |
| <b>Name</b>                 | com.splwg.ccb.domain.admin.letterTemplate.LetterExtractAlgo   |                          |  |
| <b>Parameters</b>           | <b>Name</b>   | <b>Required (yes/no)</b> | <b>Description</b>   |
|                             | External System Input String  | No                       | Input String for External System from where it will pick up path for extract file.     |
|                             | Letter Specific Business Service  | No                       | Name of Letter Specific Business Service.  |
|                             | Custom Business Service   | No                       | Name of Custom Business Service for extracting custom information specific to Auto Pay |
|                             | Name of XSL file for generating output XML  | No                       | XSL file used for XML transformation from raw ORMB XML to Documaker XML                |
|                             | Extract Folder Name   | No                       | Extract folder where the Documaker XML will get extracted after the XSLT.              |
|                             | Data Folder Name  | No                       | Used by the external system to get the path of extract files                           |
|                             | Letter Process Date Format  | No                       | Letter Process Date Format   |
|                             | Due Date format for Overdue Bill Processing   | No                       | Due Date format for Overdue Bill Processing  |
|                             | Effective Date for Auto Pay Change  | No                       | Effective Date Format for Auto Pay Change  |
|                             | Event Type Code   | No                       | Event Type Code For Overdue Processing   |
|                             | Number of Days  | No                       | No. of days in which notice of intent to cancel letter to be sent.                     |



|  |  |    |   |
|--|--|----|---|
|  | Char Type Code for Customer Contact        | No | Characteristic Type used in Overdue and AutoPay Letter.             |
|  | Char Type Code for Over Due                | No | Characteristic Type used in Overdue Letter.                         |
|  | Char Type Code for Account Number          | No | Characteristic Type used in Credit Cards Expiry and AutoPay Letter. |
|  | Char type code for Credit Card Expiry Date | No | Characteristic Type used in Credit Cards Expiry Letter.             |
|  | Char type code for Name on Credit Card     | No | Characteristic Type used in Credit Cards Expiry Letter.             |

### 30. Letter Template – Letter Extract – (Auto Pay) Implementation Details

Sample algorithm configuration:

|                             |   |   |
|-----------------------------|---|---|
| <b>Algorithm Name</b>       | <b>CM_XBILEXTAU</b>                         |   |
| <b>Parameters</b>           | <b>Name</b>                                 | <b>Value</b>                                      |
|                             | External System Input String                | <b>XML_FILE_INPUT</b>                             |
|                             | Letter Specific Business Service            | <b>C1-AutoPayLetterExt</b>                        |
|                             | Custom Business Service                     | <b>To be defined later</b>                        |
|                             | Name of XSL file for generating output XML  | <b>D:/spl/temp/XSL/ORMB_DM_AutoPayExtract.xml</b> |
|                             | Extract Folder Name                         | <b>Extract</b>                                    |
|                             | Dat Folder Name                             | <b>Data</b>                                       |
|                             | Letter Process Date Format                  | <b>MMMM dd, yyyy</b>                              |
|                             | Due Date format for Overdue Bill Processing |   |
|                             | Effective Date for Auto Pay Change          | <b>MM-dd-yyyy</b>                                 |
|                             | Event Type Code                             |   |
|                             | Number of Days                              |   |
| Char Type Code for Customer | <b>CCID</b>                                 |   |

|                        |  |                |
|------------------------|--|----------------|
|                        | Contact  |                |
|                        | Char Type Code for Over Due  |                |
|                        | Char Type Code for Account Number  | <b>C1_AUPC</b> |
|                        | Char type code for Credit Card Expiry Date   |                |
|                        | Char type code for Name on Credit Card   |                |
| <b>Detailed Design</b> | <p><b>The AutoPay letter extract algorithm uses common Algorithm Type(C1-LETXTALG) for AutoPay Letter. Base Letter Service (C1-BaseLetterExt) will be called from the algorithm and Base auto pay service (C1_XBILEXTAU) will be passed as soft parameter.</b></p> |                |

### 31. Letter Template – Letter Extract – (Credit Card Expiry) Implementation Details

Sample algorithm configuration:

|                             |   |  |
|-----------------------------|---|--|
| <b>Algorithm</b>            | <b>CM_XLETTEXTCC</b>  |  |
| <b>Description</b>          | Letter Extract Algorithm for extracting letter records from RMB for credit card expiry letters and transform the message to outbound message format |  |
| <b>Detailed Description</b> | Letter Extract  |  |
| <b>Invocation point(s)</b>  | Letter Template   |  |
| <b>Program Type</b>         | Java  |  |
| <b>Name</b>                 | com.splwg.ccb.domain.admin.letterTemplate.LetterExtractAlgo   |  |
| <b>Parameters</b>           | <b>Name</b>   | <b>Value</b>                                       |
|                             | External System Input String  | <b>XML_FILE_INPUT</b>                              |
|                             | Letter Specific Business Service  | <b>C1-CcExpiryLetterExt</b>                        |
|                             | Custom Business Service   | <b>To be defined later</b>                         |
|                             | Name of XSL file for generating output XML  | <b>D:/spl/temp/XSL/ORMB_DM_CcExpiryExtract.xsl</b> |
|                             | Extract Folder Name   | <b>Extract</b>                                     |
|                             | Dat Folder Name   | <b>Data</b>  |
|                             | Letter Process Date Format  | <b>MMMM dd, yyyy</b>                               |
|                             | Due Date format for Overdue Bill Processing   |  |
|                             | Effective Date for Auto Pay Change  |  |
|                             | Event Type Code   |  |
|                             | Number of Days  |  |
|                             | Char Type Code  |  |

|                        |   |                 |
|------------------------|---|-----------------|
|                        | for Customer Contact  |                 |
|                        | Char Type Code for Over Due   |                 |
|                        | Char Type Code for Account Number   | <b>C1-CCACT</b> |
|                        | Char type code for Credit Card Expiry Date  | <b>C1-CCDT</b>  |
|                        | Char type code for Name on Credit Card  | <b>C1-CCNM</b>  |
| <b>Detailed Design</b> | <p>The Credit Card Expiry letter extract algorithms will use common algorithm type((C1-LETXTALG). Base Letter Service (C1-BaseLetterExt) will be called from the algorithm and Base credit card service (C1-CcExpiryLetterExt ) will be passed as soft parameter.</p> |                 |

### 32. Letter Template – Letter Extract – (Past Due) Implementation Details

Sample algorithm configuration:

|                             |   |   |
|-----------------------------|---|---|
| <b>Algorithm</b>            | <b>CM_XLETEXTPD</b>   |   |
| <b>Description</b>          | Letter Extract Algorithm for extracting letter records from RMB for past due letters and transform the message to outbound message format |   |
| <b>Detailed Description</b> | Letter Extract  |   |
| <b>Invocation point(s)</b>  | Letter Template   |   |
| <b>Program Type</b>         | Java  |   |
| <b>Name</b>                 | com.splwg.ccb.domain.admin.letterTemplate.LetterExtractAlgo   |   |
| <b>Parameters</b>           | <b>Name</b>   | <b>Value</b>                                      |
|                             | External System Input String  | <b>XML_FILE_INPUT</b>                             |
|                             | Letter Specific Business Service  | <b>C1-PastDueLetterExt</b>                        |
|                             | Custom Business Service   |   |
|                             | Name of XSL file for generating output XML  | <b>D:/spl/temp/XSL/ORMB_DM_OverDueExtract.xml</b> |
|                             | Extract Folder Name   | <b>Extract</b>                                    |
|                             | Dat Folder Name   | <b>Data</b>                                       |
|                             | Letter Process Date Format  | <b>MMMM dd, yyyy</b>                              |
|                             | Due Date format for Overdue Bill Processing   | <b>MMMM dd, yyyy</b>                              |
|                             | Effective Date for Auto Pay Change  |   |
|                             | Event Type Code   | <b>INS-PAST-DUE</b>                               |
|                             | Number of Days  |   |

|                        |   |                |
|------------------------|---|----------------|
|                        | Char Type Code for Customer Contact   | <b>CCID</b>    |
|                        | Char Type Code for Over Due   | <b>OVDBILL</b> |
|                        | Char Type Code for Account Number   |                |
|                        | Char type code for Credit Card Expiry Date  |                |
|                        | Char type code for Name on Credit Card  |                |
| <b>Detailed Design</b> | <p>The letter extract algorithms will use common program and separate algorithm types will be created for each of the letter types</p> <p>Base Letter Service (C1-BaseLetterExt) will be called from the algorithm and Base past due service (C1_XBILEXTPD) will be passed as soft parameter.</p> |                |

### 33. Letter Template – Letter Extract – (Notice of Intent to Cancel) Implementation Details

Sample algorithm configuration:

|                             |   |  |
|-----------------------------|---|--|
| <b>Algorithm</b>            | <b>CM_XLETEXTNI</b>   |  |
| <b>Description</b>          | Letter Extract Algorithm for extracting letter records from RMB for intent to cancel letters and transform the message to outbound message format |  |
| <b>Detailed Description</b> | Letter Extract  |  |
| <b>Invocation point(s)</b>  | Letter Template   |  |
| <b>Program Type</b>         | Java  |  |
| <b>Name</b>                 | com.splwg.ccb.domain.admin.letterTemplate.LetterExtractAlgo   |  |
| <b>Parameters</b>           | <b>Name</b>   | <b>Value</b>   |
|                             | External System Input String  | <b>XML_FILE_INPUT</b>                                    |
|                             | Letter Specific Business Service  | <b>C1-PastDueLetterExt</b>                               |
|                             | Custom Business Service   |  |
|                             | Name of XSL file for generating output XML  | <b>D:/spl/temp/XSL/ORMB_DM_NoticeOfIntentExtract.xsl</b> |
|                             | Extract Folder Name   | <b>Extract</b>   |
|                             | Dat Folder Name   | <b>Data</b>  |
|                             | Letter Process Date Format  | <b>MMMM dd, yyyy</b>                                     |
|                             | Due Date format for Overdue Bill Processing   | <b>MMMM dd, yyyy</b>                                     |
|                             | Effective Date for Auto Pay Change Change   |  |

|                        |  |                     |
|------------------------|--|---------------------|
|                        | Event Type Code  | <b>INS-INT-CANC</b> |
|                        | Number of Days   | <b>10</b>           |
|                        | Char Type Code for Customer Contact  | <b>CCID</b>         |
|                        | Char Type Code for Over Due  | <b>OVDBILL</b>      |
|                        | Char Type Code for Account Number  |                     |
|                        | Char type code for Credit Card Expiry Date   |                     |
|                        | Char type code for Name on Credit Card   |                     |
| <b>Detailed Design</b> | <p>The letter extract algorithms will use common program and separate algorithm types will be created for each of the letter types</p> <p><b>Base Letter Service (C1-BaseLetterExt) will be called from the algorithm and Base past due service (C1_XBILEXTPD) will be passed as soft parameter.</b></p> |                     |

34. Business Service for generic information extract

|                             |   |
|-----------------------------|---|
| <b>Name</b>                 | <b>C1-BaseLetterExt</b>   |
| <b>Description</b>          | Business Service for extracting generic letter extract information  |
| <b>Detailed Description</b> | This business service will extract generic letter extract. It will create a super set for all the data that is required for different letters   |
| <b>Invocation point(s)</b>  | <b>C1_XLETETXTAU, C1_XLETETXTCC, C1_XLETETXTPD</b>  |
| <b>Detailed Design</b>      | <p>Following service program will be used</p> <p>com.splwg.ccb.domain.admin.letterTemplate.BaseLetterBusinessService</p>  |
| <b>Schema</b>               | <pre>&lt;schema&gt;   &lt;customerContactId mapField="CC_ID"/&gt;   &lt;letterTemplate mapField="LTR_TMPL_CD"/&gt;   &lt;processDtFormat mapField="PROC_DT_FRMT"/&gt;   &lt;processDate mapField="LETTER_PROCESS_DT"/&gt;   &lt;ownerName mapField="ENTITY_NAME"/&gt;   &lt;salutName mapField="ENTITY_NAME1"/&gt;   &lt;usrName mapField="USER_NAME"/&gt;   &lt;ownerAddress1 mapField="ADDRESS1"/&gt;   &lt;ownerAddress2 mapField="ADDRESS2"/&gt;   &lt;ownerAddress3 mapField="ADDRESS3"/&gt; &lt;/schema&gt;</pre> |

35. Business Service for auto pay letter extract information

|                    |  |
|--------------------|--|
| <b>Name</b>        | <b>C1-AutoPayLetterExt</b>   |
| <b>Description</b> | Business Service for extracting auto pay letter extract information              |
| <b>Detailed</b>    | This business service will extract auto pay letter extract from RMB data in case |

|                            |   |
|----------------------------|---|
| <b>Description</b>         | any specific information is required which is not part of the generic extract.  |
| <b>Invocation point(s)</b> | <b>C1_XLETEXTAU</b>   |
| <b>Detailed Design</b>     | Following service program is used<br><br>com.splwg.ccb.domain.admin.letterTemplate.AutoPayLetterBusinessService   |
| <b>Schema</b>              | <pre> &lt;schema&gt;   &lt;customerContactId mapField="CC_ID"/&gt;   &lt;acctCharTypCd mapField="CHAR_TYPE_CD"/&gt;   &lt;letterTemplate mapField="LTR_TMPL_CD"/&gt;   &lt;apayChngStartDt mapField="PL_APAY_CHNG_STR_DT"/&gt;   &lt;autoPayEffectDtFormat mapField="EFFCT_DT_FRMT"/&gt;   &lt;isNewAcctCcTyp mapField="APAY_SRC_CC_TYPE_SW_NEW"/&gt;   &lt;isOldAcctCcTyp mapField="APAY_SRC_CC_TYPE_SW"/&gt;   &lt;oldCcType mapField="DESCR"/&gt;   &lt;oldCcNbr mapField="EXT_ACCT_ID_OLD_CC"/&gt;   &lt;oldBkAccTyp mapField="DESCR_OLD_BANK_TYPE"/&gt;   &lt;oldBkAccNbr mapField="EXT_ACCT_ID"/&gt;   &lt;newCcTyp mapField="DESCR_NEW_CC_TYPE"/&gt;   &lt;newCcNbr mapField="EXT_ACCT_ID_NEW_CC"/&gt;   &lt;newBkAccTyp mapField="DESCR_NEW_BANK_TYPE"/&gt;   &lt;newBkAccNbr mapField="EXT_ACCT_ID_NEW_BANK"/&gt;   &lt;accountId mapField="ACCT_ID"/&gt; &lt;/schema&gt; </pre> |

**36. Business Service for credit card expiry letter extract information**

|                             |  |
|-----------------------------|--|
| <b>Name</b>                 | <b>C1-CcExpiryLetterExt</b>  |
| <b>Description</b>          | Business Service for extracting credit card expiry letter extract information  |
| <b>Detailed Description</b> | This business service will extract credit card expiry letter extract from RMB data in case any specific information is required which is not part of the generic extract.  |
| <b>Invocation point(s)</b>  | <b>C1_XLETEXTCC</b>  |
| <b>Detailed Design</b>      | Following service program is used<br><br>com.splwg.ccb.domain.admin.letterTemplate.CcExpiryLetterBusinessService   |
| <b>Schema</b>               | <pre> &lt;schema&gt;   &lt;customerContactId mapField="CC_ID"/&gt;   &lt;acctCharTypCd mapField="CHAR_TYPE_CD_CCACCT"/&gt;   &lt;ccExpiryDtCharCd mapField="CHAR_TYPE_CD_DT"/&gt;   &lt;ccNmCharCd mapField="CHAR_TYPE_CD_CCNM"/&gt;   &lt;ccName mapField="ENTITY_NAME"/&gt;   &lt;ccExpDate mapField="CC_EXPIRE_DT"/&gt;   &lt;accountId mapField="ACCT_ID"/&gt;   &lt;letterTemplate mapField="LTR_TMPL_CD"/&gt; &lt;/schema&gt; </pre> |

**37. Business Service for past due & notice of intent to cancel letter extract information**

|                             |  |
|-----------------------------|--|
| <b>Name</b>                 | <b>C1-PastDueLetterExt</b>   |
| <b>Description</b>          | Business Service for extracting past due letter extract information  |
| <b>Detailed Description</b> | This business service will extract past due letter extract from RMB data in case any specific information is required which is not part of the generic extract. The same BS is used for extracting data for Notice of Intent to Cancel.  |
| <b>Invocation point(s)</b>  | <b>C1_XLETETXTPD, C1_XLETETXTNI</b>  |
| <b>Detailed Design</b>      | Following service program is used<br><br>com.splwg.ccb.domain.admin.letterTemplate.PastDueLetterBusinessService  |
| <b>Schema</b>               | <pre> &lt;schema pageAction="read"&gt;   &lt;customerContactId mapField="CC_ID"/&gt;   &lt;letterTemplate mapField="LTR_TMPL_CD"/&gt;   &lt;daysTillCancellation mapField="NBR_OF_DAYS"/&gt;   &lt;eventTypCd mapField="OD_EVT_TYPE_CD"/&gt;   &lt;overdueBillDtFormat mapField="OVRD_BILL_DT_FRMT"/&gt;   &lt;customerContactCharCd mapField="CHAR_TYPE_CD"/&gt;   &lt;overDueCharCd mapField="CHAR_VAL_FK1"/&gt;   &lt;policy type="list" mapList="CI_POLICY"&gt;     &lt;policyNbr mapField="POLICY_NBR"/&gt;   &lt;/policy&gt;   &lt;billId mapField="BILL_ID"/&gt;   &lt;amtDue mapField="PL_PD_BILL_AMT"/&gt;   &lt;billDueDt mapField="PL_DUE_DT"/&gt;   &lt;accountId mapField="ACCT_ID"/&gt;   &lt;currencyCode mapField="CURRENCY_CD"/&gt;   &lt;noticeDt mapField="PB_TRIGGER_DT"/&gt;   &lt;endDt mapField="PB_END_DT"/&gt; &lt;/schema&gt; </pre> |

### 38. Overdue process configuration for Past Due and Notice of Intent to Cancel letters

Following configuration is required in order to implement the overdue process for letters.

#### Collection Class

Collection class: INS-IND-01

Description: Insurance Individual Customer - Direct Bill

Collection Method: Overdue

Note: The above mentioned collection class is created assuming the overdue is required for the direct billing customer.

In the similar manner a collection class for group, broker, or individual customer can be defined in their respective account.

#### Collection class Rule

Collection Class: Insurance Individual Customer - Direct Bill

Division: California

Currency Code: NA

Algorithms

## ORMB-Documaker Integration Guide for Banking and Insurance

System Event: Overdue Monitor Rule Algorithm: C1-CB-CR-REG (Collect Overdue Bill - Regular)

Overdue Event Type: INS-PAST-DUE

Description: Insurance Individual Customer Past Due Letter

Long Description: Insurance Individual Customer Past Due Letter

Algorithms

System Event: Event Activation Seq: 10 Algorithm: C1-OE-CC (Create Customer Contact (Overdue Event))

Overdue Event Type: INS-INT-CANC

Description: Insurance Individual Customer Notice of Intent

Long Description: Insurance Individual Customer Notice of Intent

Algorithms

System Event: Event Activation Seq: 10 Algorithm: C1-NI-CC (Cancel Overdue Event If No Dependent Events Exist)

System Event: Cancel Logic Seq: 20 Algorithm: C1-OE-NO-DEP (Create Cust. Contact (Notice of Intent to Cancel))

Overdue Template:

Overdue Process Template: C1-IN-OVRDUE

Description: Insurance Individual Customer Over Due Collecting on Object: Bill ID

Algorithms

System Event: Calculate original amounts Seq:10 Algorithm: C1-CUAOA (Calculate Unpaid And Original Amounts)

System Event: Cancel Criteria Seq: 10 Algorithm: C1-CIOPBPD (Check If Process's Bills Paid)

System Event: Cancel Logic Seq: 10 Algorithm: C1-COPAICP (Cancel Overdue Process and its Cut Processes)

Event Types

Event Sequence: 10 Overdue Event Type: INS-PAST-DUE (Insurance Individual Customer Past Due Letter)

Days after: 0 (Note: It means you can expect past due letter generated on bill due date) Dep on Other Events: NA

Event Sequence: 20 Overdue Event Type: INS-INT-CANC (Insurance Individual Customer Notice of Intent)

Days after: 10 (Note: It means you can expect past due letter generated 10 days after bill due date)

Dep on Other Events: NA



### 39. Auto Pay Source Configuration

---

Auto pay source code: VISA

Source Name: Visa

Credit Card Type: Checked

Description: Visa

Tender Type: APCC (Credit Card - Auto Pay)

Masking Character: 'X'

Number of Unmasked Characters: 4

External Source ID: NA

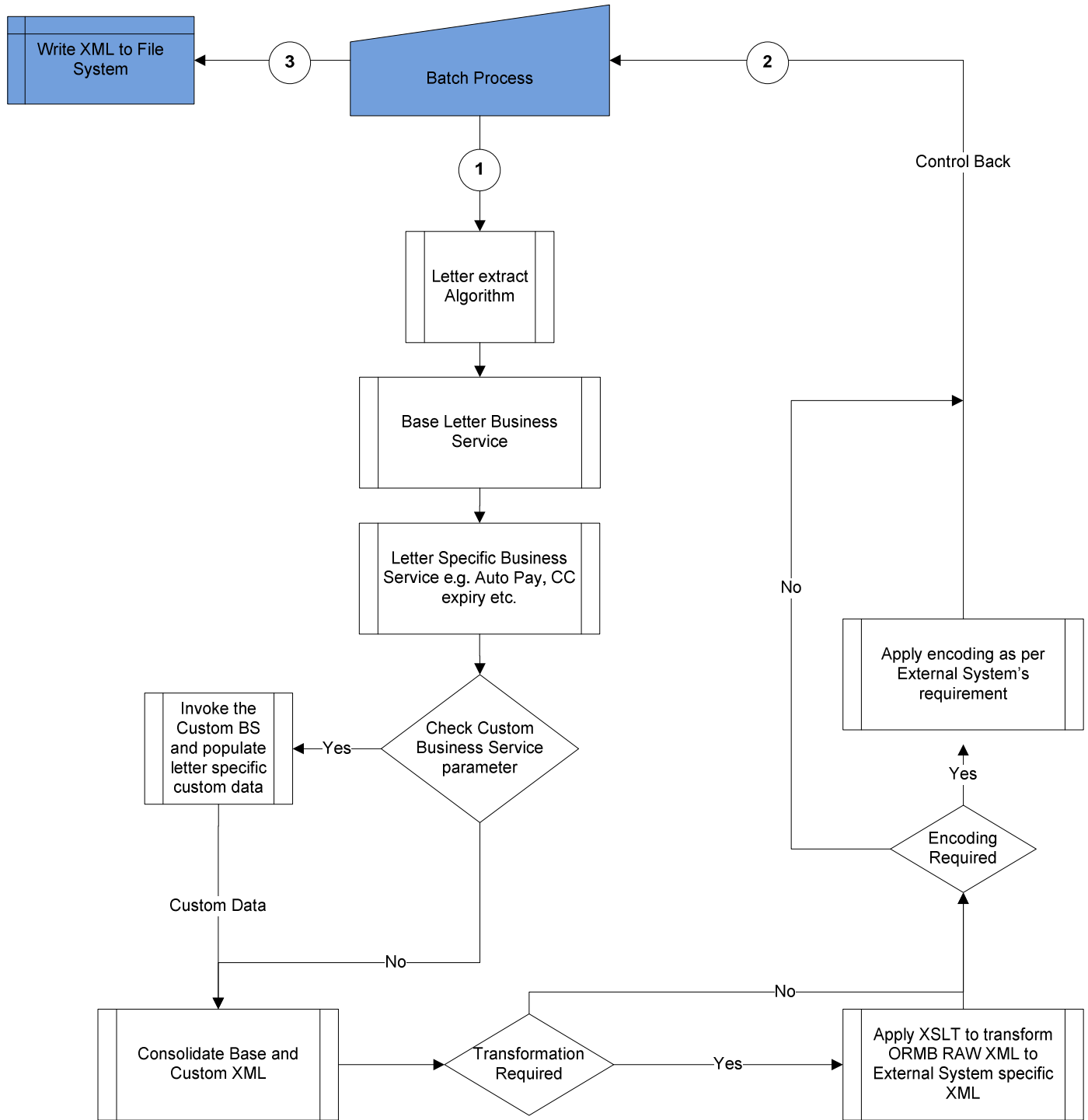
Auto Pay Route Type: ACH (Automated Clearing House)

Work Calendar: BANK

Validation Algorithm: NA

Note: similarly other auto pay source can be defined for other credit cards.

40. Batch Letter Process Flow



Refer Section 33 for batch control information.

# Chapter 4: Setup for Oracle Documaker integration

---

## 41. Install Directory setup (For Windows)

---

Step 1: Install Documaker Standard version 12.0.

Step 2: Verify that <<Install Directory>>/FAP is created on the server.

Step 3: Extract **ORMB.zip** file in the <<Install Directory>> where Documaker 12.0 was installed.

This will extract all documaker specific templates and batch files developed for Oracle Documaker.

Step 4: Modify **rmbOnlinePrint.BAT** in <<Install Directory>>ORMB\INPUT folder

Set value of **DOC1HOSTDIR** = <<Install Directory>>

Step 5: Modify **\_rmbPrint.cmd** in <<Install Directory>>\ORMB folder

Set value of **DOC1HOSTDIR** = <<Install Directory>>

Step 6: Modify **AlamereLifeRun\_online.bat** in <<Install Directory>>\ORMB folder

Set value of **DOC1HOSTDIR** = <<Install Directory>>

Set value of **PATH** = <<Install Directory>>\FAP\dll

Step 7: Modify **AlamereLifeRun\_batch.bat** in <<Install Directory>>\ORMB folder

Set value of **DOC1HOSTDIR** = <<Install Directory>>

Set value of **PATH** = <<Install Directory>>\FAP\dll

Step 8: Modify **fsiuser\_online.ini** in <<Install Directory>>\ORMB folder

Replace “<<###Absolute Path###>>” with <<Install Directory>>\ORMB

Step 9: Modify **fsiuserpub.ini** in <<Install Directory>>\ORMB folder

Replace “<<###Absolute Path###>>” with <<Install Directory>>\ORMB

Step 10: Modify **fsisyspub.ini** in <<Install Directory>>\ORMB folder

Replace “<<###Absolute Path###>>” with <<Install Directory>>\ORMB

Step 11: Modify **fsisys.ini** in <<Install Directory>>\ORMB folder

Replace “<<###Absolute Path###>>” with <<Install Directory>>\ORMB

Step 12: Modify **fsiuser\_batch.ini** in <<Install Directory>>\ORMB folder

Replace “<<###Absolute Path###>>” with <<Install Directory>>\ORMB

Change value of **ExtrFile** = <<Absolute path of bill or letter file name>>

Step 13: Create folders with name “**Extract**” and “**Data**” in directory where bills/letters need to be extracted

Step 14: Configure path of batch file **rmbOnlinePrint.BAT** along with absolute path as mentioned in Step 4 above for online algorithms.

## 42. Install Directory setup (Enterprise Linux Enterprise Linux Server Release 5.2 (Carthage))

---

Step 1: Install Documaker Standard version 12.0 on Oracle LINUX

Step 2: Verify that <<DOC1HOSTDIR>>/fap is created on the server.

Step 3: Extract ORMB.zip file in the << DOC1HOSTDIR>> where Documaker 12.0 was installed. A directory ORMB will be created which should be at the same level as fap.

This will extract all documaker specific templates and shell script files developed for Oracle Documaker.

Note: For LINUX, use binary ftp or similar tool to transfer the entire directory.

Step4: Modify rmbonlineprint.sh in the path<< DOC1HOSTDIR >>/ormb/input as per the required set up.

For example:

```
export DOC1HOSTDIR=/spl/documaker/12.0
```

```
$DOC1HOSTDIR/ormb/_rmbPrint.sh $DOC1HOSTDIR $DOC1HOSTDIR/ormb $1 $2
```

Note: Ensure that the Oracle Revenue Management and Billing userid (typically cissys) has execute ,read, write permissions to all files in the <DOCHOSTDIR>/ormb and execute in <DOCHOSTDIR>/fap folders

Sample Directory Structure

| Directory         | Comment                            |
|-------------------|------------------------------------|
| <DOCHOSTDIR>/fap  | Documaker Binaries                 |
| <DOCHOSTDIR>/ormb | ORMB templates and driver programs |

Note: Please note that the names of directory folders and paths should be in lower case.

## 43. Batch Control set up

---

Step 1: In Batch Control of bill extract (POSTROUT)

```
Set value of FILE_NAME = <<Path of Data folder created above>>\<<Output file name for bill>>
```

Step 2: In Batch Control of letter extract (LTRPRT)

```
Set value of FILE_PATH = <<Path of Data folder created above>>
```

Note: AlamereLifeRun\_batch.bat will generate PDF files in <<Install Directory>>\ORMB\PRINT folder for all the bills and letters extracted using batch control process.

## Chapter 5: A sample outbound XML

---

Agency List Bill XML

---

```

<? xml version="1.0" encoding="UTF-8" ?>

- <DOCUMENT xmlns:xsi="http://www.w3.org/2001/XMLSchema-instance"
xmlns:xsd="http://www.w3.org/2001/XMLSchema" TYPE="RPWIP" VERSION="11.5">

  -<DOCSET NAME="">

    <KEY1 NAME="KEY1">RMB</KEY1>

    <KEY2 NAME="KEY2">Life</KEY2>

    <TRANSACTIONID NAME="KEYID">GLPT31011760</TRANSACTIONID>

    <LIBRARY CONFIG="Alamere" NAME="">Alamere</LIBRARY>

    <ARCEFFECTIVEDATE NAME="CREATETIME">20100503</ARCEFFECTIVEDATE>

    <KEY1 NAME="KEY1">RMB</KEY1>

    <KEY2 NAME="KEY2">LIFE</KEY2>

    <KEYID NAME="KEYID">1111</KEYID>

    <TRANCODE NAME="TRANCODE">EN</TRANCODE>

    <STATUSCODE NAME="STATUSCODE" />

    <DESC NAME="DESC" />

    <LOCID NAME="LOCID" />

    <SUBLOCID NAME="SUBLOCID" />

    <JURISDICTN NAME="JURISDICTN" />

    <TRNNAME NAME="TRNNAME" />

    <QUEUEID NAME="QUEUEID" />

    <GUIDKEY NAME="GUIDKEY">50EEFBD7103C40C0875EF5DC12FB6773</GUIDKEY>

    <FIELD NAME="ProcessDt">October 08, 2011</FIELD>

    <FIELD NAME="AgentFullNm">User5, Broker</FIELD>

    <FIELD NAME="AgentAddrLine1">7, Central Avenue</FIELD>

```

```

<FIELD NAME="AgentAddrLine2">5th Floor, 6th Block</FIELD>
<FIELD NAME="AgentAddrLine3">San Jose, CA, 400055</FIELD>
<FIELD NAME="CustomerAccountNum">9969593557</FIELD>
<FIELD NAME="BillNum">996951661518</FIELD>
<FIELD NAME="BillPeriod">09-09-2011 to 10-08-2011</FIELD>
<FIELD NAME="BillMode">Monthly Billing</FIELD>
<FIELD NAME="LastBillDueAmt">$0.00</FIELD>
<FIELD NAME="PaymentRecv">$0.00</FIELD>
<FIELD NAME="OpeningBal">$0.00</FIELD>
<FIELD NAME="ChargesCurTot">$667.50</FIELD>
<FIELD NAME="OtherAdjustments">$0.00</FIELD>
<FIELD NAME="NetCharges">$667.50</FIELD>
<FIELD NAME="NetAmountDue">$667.50</FIELD>
<FIELD NAME="BillDueDt">10-18-2011</FIELD>
- <GROUP NAME2="LIFE" NAME1="RMB" NAME="">
- <FORM NAME="RMB-LBILL-AGENT1">
    <DESCRIPTION>List Bill Health</DESCRIPTION>
</FORM>
- <FORM NAME="RMB-LBILL-AGENT2">
    <DESCRIPTION>List Bill Health2</DESCRIPTION>
- <SHEET>
- <PAGE>
    <SECTION NAME="RMB_LANDSCAPE_HEADER" />
    <SECTION NAME="RMB_AGENT_LIST_BILL_DETAIL_HEADER"
/>
- <SECTION NAME="RMB_AGENT_LIST_BILL_DETAIL_BODY">
        <FIELD NAME="TransactionDt">09-09-2011</FIELD>
        <FIELD NAME="PolicyNum">UINBRPC1111</FIELD>
        <FIELD NAME="PolicyTyp">NEW BROKER
POLICY</FIELD>

```

## ORMB-Documaker Integration Guide for Banking and Insurance

```
<FIELD NAME="TransactionEffDt">09-09-2011</FIELD>
<FIELD NAME="TransactionTyp">All Charges</FIELD>
<FIELD NAME="GrossPremium">$111.17</FIELD>
<FIELD NAME="Commission">20%</FIELD>
<FIELD NAME="CommissionAmt">$18.33</FIELD>
<FIELD NAME="NetPremium">$92.84</FIELD>
</SECTION>
-<SECTION NAME="RMB_AGENT_LIST_BILL_DETAIL_BODY">
  <FIELD NAME="TransactionDt">09-09-2011</FIELD>
  <FIELD NAME="PolicyNum">UINBRPC5555</FIELD>
  <FIELD NAME="PolicyTyp">NEW BROKER
POLICY</FIELD>
  <FIELD NAME="TransactionEffDt">09-09-2011</FIELD>
  <FIELD NAME="TransactionTyp">All Charges</FIELD>
  <FIELD NAME="GrossPremium">$147.50</FIELD>
  <FIELD NAME="Commission">20%</FIELD>
  <FIELD NAME="CommissionAmt">$25.00</FIELD>
  <FIELD NAME="NetPremium">$122.50</FIELD>
</SECTION>
-<SECTION NAME="RMB_AGENT_LIST_BILL_DETAIL_BODY">
  <FIELD NAME="TransactionDt">09-09-2011</FIELD>
  <FIELD NAME="PolicyNum">UINBRPC6666</FIELD>
  <FIELD NAME="PolicyTyp">AUTO</FIELD>
  <FIELD NAME="TransactionEffDt">09-09-2011</FIELD>
  <FIELD NAME="TransactionTyp">All Charges</FIELD>
  <FIELD NAME="GrossPremium">$156.33</FIELD>
  <FIELD NAME="Commission">20%</FIELD>
  <FIELD NAME="CommissionAmt">$26.67</FIELD>
  <FIELD NAME="NetPremium">$129.66</FIELD>
```

</SECTION>

-<SECTION NAME="RMB\_AGENT\_LIST\_BILL\_DETAIL\_BODY">

<FIELD NAME="TransactionDt">09-09-2011</FIELD>

<FIELD NAME="PolicyNum">UINBRPC4444</FIELD>

<FIELD NAME="PolicyTyp">AUTO</FIELD>

<FIELD NAME="TransactionEffDt">09-09-2011</FIELD>

<FIELD NAME="TransactionTyp">All Charges</FIELD>

<FIELD NAME="GrossPremium">\$138.67</FIELD>

<FIELD NAME="Commission">20%</FIELD>

<FIELD NAME="CommissionAmt">\$23.33</FIELD>

<FIELD NAME="NetPremium">\$115.34</FIELD>

</SECTION>

-<SECTION NAME="RMB\_AGENT\_LIST\_BILL\_DETAIL\_BODY">

<FIELD NAME="TransactionDt">09-09-2011</FIELD>

<FIELD NAME="PolicyNum">UINBRPC2222</FIELD>

<FIELD NAME="PolicyTyp">AUTO</FIELD>

<FIELD NAME="TransactionEffDt">09-09-2011</FIELD>

<FIELD NAME="TransactionTyp">All Charges</FIELD>

<FIELD NAME="GrossPremium">\$120.00</FIELD>

<FIELD NAME="Commission">20%</FIELD>

<FIELD NAME="CommissionAmt">\$20.00</FIELD>

<FIELD NAME="NetPremium">\$100.00</FIELD>

</SECTION>

- <SECTION NAME="RMB\_AGENT\_LIST\_BILL\_DETAIL\_BODY">

<FIELD NAME="TransactionDt">09-09-2011</FIELD>

<FIELD NAME="PolicyNum">UINBRPC3333</FIELD>

<FIELD NAME="PolicyTyp">NEW BROKER

POLICY</FIELD>

<FIELD NAME="TransactionEffDt">09-09-2011</FIELD>



## ORMB-Documaker Integration Guide for Banking and Insurance

```
<FIELD NAME="TransactionTyp">All Charges</FIELD>
<FIELD NAME="GrossPremium">$128.83</FIELD>
<FIELD NAME="Commission">20%</FIELD>
<FIELD NAME="CommissionAmt">$21.67</FIELD>
<FIELD NAME="NetPremium">$107.16</FIELD>
</SECTION>
- <SECTION NAME="RMB_AGENT_LIST_BILL_DETAIL_BODY2">
    <FIELD NAME="GrossPremiumTot">$802.50</FIELD>
    <FIELD NAME="CommissionAmtTot">$135.00</FIELD>
    <FIELD NAME="NetPremiumTot">$667.50</FIELD>
</SECTION>
- <SECTION NAME="RMB_AGENT_LIST_BILL_DETAIL_TOTAL">
    <FIELD NAME="NetAmountDue">$667.50</FIELD>
</SECTION>
<SECTION NAME="RMB_LANDSCAPE_FOOTER" />
</PAGE>
</SHEET>
</FORM>
</GROUP>
</DOCSET>
</DOCUMENT>
```

Agency List Bill XSL

---

```
<?xml version="1.0" encoding="utf-8" ?>
- <xsl:stylesheet xmlns:xsl="http://www.w3.org/1999/XSL/Transform" version="1.0">
  <xsl:output method="xml" indent="yes" />
  <xsl:template match="/">
```

```

- <DOCUMENT xmlns:xsd=http://www.w3.org/2001/XMLSchema
xmlns:xsi="http://www.w3.org/2001/XMLSchema-instance" VERSION="11.5" TYPE="RPWIP">
  - <DOCSET NAME="">
    <KEY1 NAME="KEY1">RMB</KEY1>
    <KEY2 NAME="KEY2">Life</KEY2>
    <TRANSACTIONID NAME="KEYID">GLPT31011760</TRANSACTIONID>
    <LIBRARY NAME="" CONFIG="Alamere">Alamere</LIBRARY>
    <ARCEFFECTIVEDATE NAME="CREATETIME">20100503</ARCEFFECTIVEDATE>
    <KEY1 NAME="KEY1">RMB</KEY1>
    <KEY2 NAME="KEY2">LIFE</KEY2>
    <KEYID NAME="KEYID">1111</KEYID>
    <TRANCODE NAME="TRANCODE">EN</TRANCODE>
    <STATUSCODE NAME="STATUSCODE" />
    <DESC NAME="DESC" />
    <LOCID NAME="LOCID" />
    <SUBLOCID NAME="SUBLOCID" />
    <JURISDICTN NAME="JURISDICTN" />
    <TRNNAME NAME="TRNNAME" />
    <QUEUEID NAME="QUEUEID" />
    <GUIDKEY NAME="GUIDKEY">50EEFBD7103C40C0875EF5DC12FB6773</GUIDKEY>
  - <FIELD NAME="ProcessDt">
    <xsl:value-of select="//C1-BillHeaderExtract/frmtProcessDt" />
  </FIELD>
  - <FIELD NAME="AgentFullNm">
    <xsl:value-of select="//C1-BillHeaderExtract/payerFullNm" />
  </FIELD>
  - <FIELD NAME="AgentAddrLine1">
    <xsl:value-of select="//C1-BillHeaderExtract/payerAddress1" />
  </FIELD>
  - <FIELD NAME="AgentAddrLine2">
    <xsl:value-of select="//C1-BillHeaderExtract/payerAddress2" />
    ,
    <xsl:value-of select="//C1-BillHeaderExtract/payerAddress3" />
  </FIELD>
  - <FIELD NAME="AgentAddrLine3">
    <xsl:value-of select="//C1-BillHeaderExtract/city" />
    ,
    <xsl:value-of select="//C1-BillHeaderExtract/state" />
    ,
    <xsl:value-of select="//C1-BillHeaderExtract/postal" />
  </FIELD>
  - <FIELD NAME="CustomerAccountNum">
    <xsl:value-of select="//C1-BillHeaderExtract/customerAcctNum" />
  </FIELD>
  - <FIELD NAME="BillNum">
    <xsl:value-of select="//C1-BillHeaderExtract/billId" />
  </FIELD>
  - <FIELD NAME="BillPeriod">
    <xsl:value-of select="//C1-BillHeaderExtract/billStartDt" />
    to
    <xsl:value-of select="//C1-BillHeaderExtract/billEndDt" />
  </FIELD>
  - <FIELD NAME="BillMode">
    <xsl:value-of select="//C1-BillHeaderExtract/paymentMd" />
  </FIELD>
  - <FIELD NAME="LastBillDueAmt">
    <xsl:value-of select="//C1-InsAcctSummaryExtract/previousBillAmt" />

```

```

</FIELD>
-<FIELD NAME="PaymentRecv">
  <xsl:value-of select="//C1-InsAcctSummaryExtract/previousPayments" />
</FIELD>
- <FIELD NAME="OpeningBal">
  <xsl:value-of select="//C1-InsAcctSummaryExtract/openingBal" />
</FIELD>
- <FIELD NAME="ChargesCurTot">
  <xsl:value-of select="//C1-InsAcctSummaryExtract/currChrg" />
</FIELD>
- <FIELD NAME="OtherAdjustments">
  <xsl:value-of select="//C1-InsAcctSummaryExtract/othrAdjstmnts" />
</FIELD>
- <FIELD NAME="NetCharges">
  <xsl:value-of select="//C1-InsAcctSummaryExtract/netChrg" />
</FIELD>
- <FIELD NAME="NetAmountDue">
  <xsl:value-of select="//C1-InsAcctSummaryExtract/netAmtDue" />
</FIELD>
- <FIELD NAME="BillDueDt">
  <xsl:value-of select="//C1-BillHeaderExtract/frmtdBillDueDt" />
</FIELD>
- <GROUP NAME="" NAME1="RMB" NAME2="LIFE">
- <FORM NAME="RMB-LBILL-AGENT1">
  <DESCRIPTION>List Bill Health</DESCRIPTION>
</FORM>
- <FORM NAME="RMB-LBILL-AGENT2">
  <DESCRIPTION>List Bill Health2</DESCRIPTION>
- <SHEET>
- <PAGE>
  <SECTION NAME="RMB_LANDSCAPE_HEADER" />
  <SECTION NAME="RMB_AGENT_LIST_BILL_DETAIL_HEADER" />
- <xsl:for-each select="//C1-PolicyDetailsExtract/policyDtls">
- <SECTION NAME="RMB_AGENT_LIST_BILL_DETAIL_BODY">
- <FIELD NAME="TransactionDt">
  <xsl:value-of select="policyBillStartDt" />
</FIELD>
- <FIELD NAME="PolicyNum">
  <xsl:value-of select="policyNbr" />
</FIELD>
- <FIELD NAME="PolicyTyp">
  <xsl:value-of select="policyDesc" />
</FIELD>
- <FIELD NAME="TransactionEffDt">
  <xsl:value-of select="policyBillStartDt" />
</FIELD>
  <FIELD NAME="TransactionTyp">All Charges</FIELD>
- <FIELD NAME="GrossPremium">
  <xsl:value-of select="policyGrossPremiumAmt" />
</FIELD>
- <FIELD NAME="Commission">
  <xsl:value-of select="policyCommRate" />
  %
</FIELD>
- <FIELD NAME="CommissionAmt">
  <xsl:value-of select="policyCommVal" />
</FIELD>

```

```

- <FIELD NAME="NetPremium">
  <xsl:value-of select="premiumDueAmt" />
</FIELD>
</SECTION>
</xsl:for-each>
- <SECTION NAME="RMB_AGENT_LIST_BILL_DETAIL_BODY2">
- <FIELD NAME="GrossPremiumTot">
  <xsl:value-of select="//C1-PolicyDetailsExtract/billGrossPremiumDueAmt" />
</FIELD>
- <FIELD NAME="CommissionAmtTot">
  <xsl:value-of select="//C1-PolicyDetailsExtract/billCommAmt" />
</FIELD>
- <FIELD NAME="NetPremiumTot">
  <xsl:value-of select="//C1-PolicyDetailsExtract/billNetPremiumDueAmt" />
</FIELD>
</SECTION>
- <SECTION NAME="RMB_AGENT_LIST_BILL_DETAIL_TOTAL">
- <FIELD NAME="NetAmountDue">
  <xsl:value-of select="//C1-InsAcctSummaryExtract/netAmtDue" />
</FIELD>
</SECTION>
<SECTION NAME="RMB_LANDSCAPE_FOOTER" />
</PAGE>
</SHEET>
</FORM>
</GROUP>
</DOCSET>
</DOCUMENT>
</xsl:template>
</xsl:stylesheet>

```

```

<?xml version="1.0" encoding="utf-8" ?>
- <DOCUMENT xmlns:xsi="http://www.w3.org/2001/XMLSchema-instance"
  xmlns:xsd="http://www.w3.org/2001/XMLSchema" TYPE="RPWIP" VERSION="11.5">
- <DOCSET NAME="">
  <KEY1 NAME="KEY1">RMB</KEY1>
  <KEY2 NAME="KEY2">Life</KEY2>
  <TRANSACTIONID NAME="KEYID">GLPT31011760</TRANSACTIONID>
  <LIBRARY CONFIG="Alamere" NAME="">Alamere</LIBRARY>
  <ARCEFFECTIVEDATE NAME="CREATETIME">20100503</ARCEFFECTIVEDATE>
  <KEY1 NAME="KEY1">RMB</KEY1>
  <KEY2 NAME="KEY2">LIFE</KEY2>
  <KEYID NAME="KEYID">1111</KEYID>
  <TRANCODE NAME="TRANCODE">EN</TRANCODE>
  <STATUSCODE NAME="STATUSCODE" />
  <DESC NAME="DESC" />
  <LOCID NAME="LOCID" />
  <SUBLOCID NAME="SUBLOCID" />
  <JURISDICTN NAME="JURISDICTN" />
  <TRNNAME NAME="TRNNAME" />
  <QUEUEID NAME="QUEUEID" />
  <GUIDKEY NAME="GUIDKEY">50EEFBD7103C40C0875EF5DC12FB6773</GUIDKEY>
  <FIELD NAME="CustomerAccountNum">346477</FIELD>
  <FIELD NAME="CustomerNm">Master InvoiceGroup</FIELD>
  <FIELD NAME="CustomerAccountNum">1303715465</FIELD>
  <FIELD NAME="CustomerNm">Master InvoiceGroup</FIELD>
  <FIELD NAME="CustomerAccountNum">1303715465</FIELD>
  <FIELD NAME="CustomerNm">Master InvoiceGroup</FIELD>
  <FIELD NAME="BillPeriod">06-11-2012 - 07-10-2012</FIELD>
  <FIELD NAME="BillNum">575092530690</FIELD>
  <FIELD NAME="ProcessDt">July 11, 2012</FIELD>
  <FIELD NAME="VatNum">ANBP8796</FIELD>
- <GROUP NAME="" NAME1="RMB" NAME2="LIFE">
- <FORM NAME="RMB-LBILL-COMMBANKING">
  <DESCRIPTION>Commercial Banking List Bill</DESCRIPTION>
  - <SHEET>
    - <PAGE>
      <SECTION NAME="RMB_COMM BANKING_HEADER" />
      <SECTION NAME="RMB_COMM BANKING_TITLE" />
      <SECTION NAME="RMB_COMM BANKING_BRANCH INFO">
        <FIELD NAME="BranchNm">CA</FIELD>
      </SECTION>
      - <SECTION NAME="RMB_COMM BANKING_BRANCH INFO2">
        <FIELD NAME="BranchInfoLine">California</FIELD>
      </SECTION>
      - <SECTION NAME="RMB_COMM BANKING_BRANCH INFO2">
        <FIELD NAME="BranchInfoLine">My comments</FIELD>
      </SECTION>
      - <SECTION NAME="RMB_COMM BANKING_BRANCH INFO2">
        <FIELD NAME="BranchInfoLine" />
      </SECTION>
      - <SECTION NAME="RMB_COMM BANKING_BRANCH INFO2">
        <FIELD NAME="BranchInfoLine" />
      </SECTION>
    
```

## ORMB-Documaker Integration Guide for Banking and Insurance

```

<SECTION NAME="RMB_COMM BANKING_INVOICE_SUMMARY_HEADER" />
- <SECTION NAME="RMB_COMM BANKING_INVOICE_SUMMARY2">
  <FIELD NAME="ChargesCurTot">3,002.00 USD</FIELD>
  <FIELD NAME="Adjustments">0.00 USD</FIELD>
  <FIELD NAME="CurrentTotTaxesInvoiceCurrency">1.00 USD</FIELD>
  <FIELD NAME="Credits">0.00 USD</FIELD>
  <FIELD NAME="NetAmountDue">3,003.00 USD</FIELD>
</SECTION>
- <SECTION NAME="RMB_COMM BANKING_CUSTOMER_ADDR">
  <FIELD NAME="CustomerAddrLine1">Master InvoiceGroup</FIELD>
  <FIELD NAME="CustomerAddrLine1">Master InvoiceGroup</FIELD>
  <FIELD NAME="CustomerAddrLine1">Master InvoiceGroup</FIELD>
  <FIELD NAME="CustomerAddrLine2">34,New Street, Cape Town</FIELD>
  <FIELD NAME="CustomerAddrLine4">New Jersey, CA, USA, 234970</FIELD>
</SECTION>
- <SECTION NAME="RMB_COMM BANKING_COMMENTS">
  <FIELD NAME="AccountDetails">CUSTOMER AND ACCOUNT NUMBER(S)
INCLUDED IN THIS INVOICE : Customer Number : 346477 - 6474789998, 58584</FIELD>
</SECTION>

<SECTION NAME="RMB_COMM_BANKING_FOOTER" />
</PAGE>
</SHEET>
- <SHEET>
- <PAGE>
<SECTION NAME="RMB_COMM BANKING_HEADER" />
<SECTION NAME="RMB_COMM BANKING_ACCOUNTS_SUMMARY" />
  <DESCRIPTION>Account Summary Starts Here</DESCRIPTION>
- <SECTION NAME="RMB_COMM BANKING_ACCOUNTS_SUMMARY_BODY">
  <FIELD NAME="AccountNum">6474789998</FIELD>
  <FIELD NAME="PreviousChargesDue">0.00 USD</FIELD>
  <FIELD NAME="CurrentPayments">0.00 USD</FIELD>
  <FIELD NAME="TotalCurPeriodCharges">1,001.00 USD</FIELD>
  <FIELD NAME="Credits">0.00 USD</FIELD>
  <FIELD NAME="Adjustments">0.00 USD</FIELD>
  <FIELD NAME="Taxes">0.50 USD</FIELD>
  <FIELD NAME="TotalChargesDue">1,001.50 USD</FIELD>
</SECTION>
- <SECTION NAME="RMB_COMM BANKING_ACCOUNTS_SUMMARY_BODY">
  <FIELD NAME="AccountNum">58584</FIELD>
  <FIELD NAME="PreviousChargesDue">0.00 USD</FIELD>
  <FIELD NAME="CurrentPayments">0.00 USD</FIELD>
  <FIELD NAME="TotalCurPeriodCharges">2,001.00 USD</FIELD>
  <FIELD NAME="Credits">0.00 USD</FIELD>
  <FIELD NAME="Adjustments">0.00 USD</FIELD>
  <FIELD NAME="Taxes">0.50 USD</FIELD>
  <FIELD NAME="TotalChargesDue">2,001.50 USD</FIELD>
</SECTION>
  <DESCRIPTION>Account Summary Ends Here</DESCRIPTION>
<SECTION NAME="RMB_COMM_BANKING_FOOTER" />
</PAGE>
</SHEET>
- <SHEET>
- <PAGE>
<SECTION NAME="RMB_COMM BANKING_HEADER" />
  <DESCRIPTION>Service Summary Starts Here</DESCRIPTION>
- <SECTION NAME="RMB_COMM BANKING_SERVICE_SUMMARY_HEADER">
  <FIELD NAME="AccountNum">6474789998</FIELD>

```

## ORMB-Documaker Integration Guide for Banking and Insurance

```
</SECTION>
<SECTION NAME="RMB_COMM BANKING_SERVICE_SUMMARY_HEADER2" />
- <SECTION NAME="RMB_COMM BANKING_SERVICE_SUMMARY_BODY1">
  <FIELD NAME="Service">Other Service</FIELD>
  <FIELD NAME="ProductCharges">1,001.00 USD</FIELD>
</SECTION>
- <SECTION NAME="RMB_COMM BANKING_SERVICE_SUMMARY_BODY2">
  <FIELD NAME="TotalCharges">1,001.00 USD</FIELD>
  <FIELD NAME="TotalTaxes">0.50USD</FIELD>
  <FIELD NAME="TotalCurPeriodCharges">1,001.50 USD</FIELD>
</SECTION>
- <SECTION NAME="RMB_COMM BANKING_SERVICE_SUMMARY_HEADER">
  <FIELD NAME="AccountNum">58584</FIELD>
</SECTION>
<SECTION NAME="RMB_COMM BANKING_SERVICE_SUMMARY_HEADER2" />
- <SECTION NAME="RMB_COMM BANKING_SERVICE_SUMMARY_BODY1">
  <FIELD NAME="Service">Other Service</FIELD>
  <FIELD NAME="ProductCharges">2,001.00 USD</FIELD>
</SECTION>
- <SECTION NAME="RMB_COMM BANKING_SERVICE_SUMMARY_BODY2">
  <FIELD NAME="TotalCharges">2,001.00 USD</FIELD>
  <FIELD NAME="TotalTaxes">0.50USD</FIELD>
  <FIELD NAME="TotalCurPeriodCharges">2,001.50 USD</FIELD>
</SECTION>
<DESCRIPTION>Service Summary Ends Here</DESCRIPTION>
<SECTION NAME="RMB_COMM_BANKING_FOOTER" />
</PAGE>
  </SHEET>
  - <SHEET>
  - <PAGE>
<SECTION NAME="RMB_COMM BANKING_HEADER" />
- <SECTION NAME="RMB_COMM BANKING_SERVICE_ACTIVITY_HEADER">
  <FIELD NAME="AccountNum">6474789998</FIELD>
</SECTION>
<SECTION NAME="RMB_COMM BANKING_SERVICE_ACTIVITY_HEADER2" />
- <SECTION NAME="RMB_COMM BANKING_SERVICE_ACTIVITY_BODY1">
  <FIELD NAME="Service">Other Service</FIELD>
</SECTION>
- <SECTION NAME="RMB_COMM BANKING_SERVICE_ACTIVITY_BODY2">
  <FIELD NAME="SubService">Invoice Group Product</FIELD>
  <FIELD NAME="PricingMthd">Simple Price * NBR</FIELD>
  <FIELD NAME="UnitPrice" />
  <FIELD NAME="Volume" />
  <FIELD NAME="Charge">1,001.00 USD</FIELD>
  <FIELD NAME="ConversionRate">0.000000</FIELD>
  <FIELD NAME="SubServiceCharges">1,001.00 USD</FIELD>
</SECTION>
- <SECTION NAME="RMB_COMM BANKING_SERVICE_ACTIVITY_BODY3">
  <FIELD NAME="SubTotal">1,001.00 USD</FIELD>
</SECTION>
- <SECTION NAME="RMB_COMM BANKING_SERVICE_ACTIVITY_BODY4">
  <FIELD NAME="TotalTaxableCharges" />
  <FIELD NAME="TotalNonTaxableCharges" />
  <FIELD NAME="TotalCharges">1,001.00 USD</FIELD>
  <FIELD NAME="TotalTaxesInvoiceCurrency">0.50 USD</FIELD>
</SECTION>
- <SECTION NAME="RMB_COMM BANKING_SERVICE_ACTIVITY_HEADER">
```



## ORMB-Documaker Integration Guide for Banking and Insurance

```
<FIELD NAME="AccountNum">58584</FIELD>
</SECTION>
<SECTION NAME="RMB_COMM BANKING_SERVICE_ACTIVITY_HEADER2" />
- <SECTION NAME="RMB_COMM BANKING_SERVICE_ACTIVITY_BODY1">
  <FIELD NAME="Service">Other Service</FIELD>
</SECTION>
- <SECTION NAME="RMB_COMM BANKING_SERVICE_ACTIVITY_BODY2">
  <FIELD NAME="SubService">Invoice Group Product 02</FIELD>
  <FIELD NAME="PricingMthd">Simple Price * NBR</FIELD>
  <FIELD NAME="UnitPrice" />
  <FIELD NAME="Volume" />
  <FIELD NAME="Charge">2,001.00 USD</FIELD>
  <FIELD NAME="ConversionRate">0.000000</FIELD>
  <FIELD NAME="SubServiceCharges">2,001.00 USD</FIELD>
</SECTION>
- <SECTION NAME="RMB_COMM BANKING_SERVICE_ACTIVITY_BODY3">
  <FIELD NAME="SubTotal">2,001.00 USD</FIELD>
</SECTION>
- <SECTION NAME="RMB_COMM BANKING_SERVICE_ACTIVITY_BODY4">
  <FIELD NAME="TotalTaxableCharges" />
  <FIELD NAME="TotalNonTaxableCharges" />
  <FIELD NAME="TotalCharges">2,001.00 USD</FIELD>
  <FIELD NAME="TotalTaxesInvoiceCurrency">0.50 USD</FIELD>
</SECTION>
<SECTION NAME="RMB_COMM_BANKING_FOOTER" />
  </PAGE>
    </SHEET>
  - <SHEET>
    - <PAGE>
  <SECTION NAME="RMB_COMM BANKING_HEADER" />
    </PAGE>
    </SHEET>
  </FORM>
</GROUP>
</DOCSET>
</DOCUMENT>
```