

Organisational structure chart

Clinical Divisions

August 2020



Trust Board



Chair
Michele Romaine



Chief Executive
Andrea Young

Executive Directors



Director of Finance
Catherine Phillips



Medical Director
Christopher Burton



Chief Operating Officer
Evelyn Barker



**Director of Nursing
and Quality**
Helen Blanchard



**Director of People and
Transformation**
Jacqui Marshall



Director of Informatics
Neil Darvill



**Director of Estates, Facilities
and Capital Planning**
Simon Wood

Non-Executive Directors



Jaki Meekings-
Davis



John Everitt



John Iredale



Kelvin Blake



Kelly Macfarlane



Tim Gregory



Richard Gaunt



Ade Williams

.....
• **Director of Governance
/ Trust Secretary**



Xavier Bell

5 Clinical Divisions

Anaesthesia, Surgery, Critical Care and Renal (ASCR)



Clinical Director
Reston Smith

Core Clinical Services



Clinical Director
Rommel Ravanani

Medicine



Clinical Director
Kieran Flanagan

Neurological & Musculoskeletal Sciences (NMSK)



Clinical Director
Stephen Eastaugh-
Waring

Women & Children's Health



Clinical Director
Paul Mannix

Anaesthesia, Surgery, Critical Care and Renal (ASCR)

ASCR management team



Clinical Director
Reston Smith



Divisional
Operational Director
Karen Brown



Head of Nursing
Liz Varian

ASCR corporate support



Finance Partner
Helen Wright



People Partner
Matt Foxon



BI Analyst
Julie-Ann Evans

Specialties	Critical Care	General Surgery	Vascular Network	Breast Services	Plastic, Burns and Dermatology	Urology	Anaesthesia	Renal & Transplant	Elective Care	Emergency Care	Hospital at Home
Specialty Lead	Aidan Marsh	James Hewes	Rob Hinchliffe	Rachel Ainsworth	Sherif Wilson	Salah Albuheissi	Rhys Davies	James Bushnell	Lucy Kirkham	Christopher Thompson	Vacant
Service Manager / AGM	Harriet Livesey	Anna Rossiter		Carla Griffiths	Shabeshan Vaithianathan	Carla Griffiths	Harriet Livesey	Anna Rossiter	Tom Gardener	Anna Rossiter	Anna Rossiter / Jack Brimson
Lead Nurse / Matron	Valentine Crook-Jones	Natalie Ferris	Tara Iles	Nicola Mackey		Natalie Ferris	Dawn Hird	Tara Iles (ward 8b) Fiona Wilkes (dialysis units)	Dawn Hird	Natalie Ferris	Natalie Ferris
Ward Manager / Theatre Co-ordinator	Rachael Smith Sara Millin Sally Kelly Kate Allchorne Mike Puckey Alison Spencer Chris Mills	Vacant / Sarah Crosswell	Silvia Rubino Hannah McKinney Kelly Jones	Caroline Eden Catherine Braybrooke	Johanna Thomas Catherine Braybrooke Outpatients Emma Fox	Lisa Hayward Sarah Crosswell	Carol Hughes Damien Crosswell James Chesterton	Jackie Caskey Prakash Choughule	Medirooms Michelle Dyer	Karen Venton Marcia Dawkins	Lucinda Saunders

Core Clinical Services

Core Clinical Services management team



Clinical Director
Rommel Ravanani



Divisional
Operational Director
Sarah Robinson



Head of Professions
Jane Coleborn

Core Clinical Services corporate support



Finance Partner
Simon Jones



People Partner
Elaine Sheppard



BI Analyst
Mary Wright

Nina Stock – Deputy Divisional Operations Director

Specialties	Imaging	Pathology	Pharmacy	Therapies	Outpatients	Clinical Equipment Services
Specialty Lead	Marcus Bradley	Vacant	Jane Coleborn	Steve Bunce	N/A	N/A
Specialty Manager	Imaging Services Manager: Helen Bromwich Imaging Business Manager: Sean Fry Head of Medical Photography and Illustration: Dawn White Clinical Matron: Natasha Blackmur	Pathology Services Manager: David Gibbs Head of Blood Sciences: Paul Virgo Laboratory Manager, Cellular Pathology: Andrew Heryet Laboratory Manager, Infection Sciences: Jonathan Steer Head of Genetics: Rachel Butler	Associate Director -Business Development: Maggie Pugh Associate Director – Clinical Services: Alison Staples Associate Director – Medicines Governance: Jonathan Campbell Pharmacy Operations Manager: Deborah Brenton	Head of Speech and Language Therapy: Catherine Sluman Head of Dietetics and Nutrition: Katherine Barker Occupational Therapy Professional Manager: Anne Barraud Inpatient Physiotherapy Professional Manager: Jill Boot / Liz Britton Outpatient Physiotherapy Professional Manager: Kate Baskill	Head of Outpatients: Nickola Gipp Performance and Operations Manager: Nicky Upton Deputy Performance and Operations Manager: Sharon Thomas Clinical Matron: Natasha Blackmur	Head of Clinical Equipment Services: Alan Gatling Deputy Head of Clinical Equipment Services: Paul Derman

Medicine



North Bristol
NHS Trust

Medicine management team



Clinical Director
Kieran Flanagan

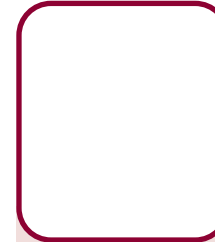


Divisional
Operational Director
Valerie Clarke

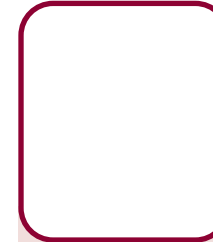


Divisional Director of
Nursing
Luisa Goddard

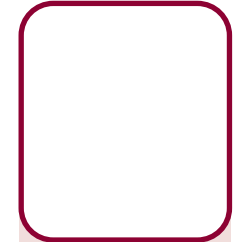
Medicine corporate support



Finance Partner
Jenny Costley



People Partner
James Caldwell



BI Analyst
Catherine Ridley

Specialties	Emergency medicine	Acute medicine	Mental health liaison	Immunology / Infectious Diseases / HIV	Haematology	Acute oncology	Medical Day Care	Palliative care	Cardiology	Care of the elderly	Diabetes / Endocrinology	Clinical psychology	Gastroenterology	Respiratory	Endoscopy
Specialty Lead	Leilah Dare	Ella Chaudhuri	Anish Patel	Mark Gompels	Alastair Whiteway	N/A	Harsha Gunawardena	Clare Kendall	Andrew Skyrme-Jones	Jarrod Richards	Lynn Sawyer	Charlie Jones	Talal Valliani	Martin Plummeridge	Ana Terlevich
Service Manager / AGM	Sam Wadham			Nicola Alfonsi						Ben Hewlett			Lynn Towers		
Lead Nurse / Matron	Juliette Hughes	Annie Langford	Ben Ford	Sarah Lidgett		Lucy Henderson	Sarah Lidgett	Nikki Jordan	Sarah Lidgett	Annie Langford	Sarah Lidgett	N/A	Sarah Lidgett		N/A
Ward Manager	Matt Crabtree	Shelley Panayiotou (mat leave) Gemma Stafford George Duffield Emma Steadman	N/A	Adelaide Campbell-Upton Tracey Lucas	Tracey Lucas	N/A	Jackie Binns Rebecca Toghill	N/A	Jennie Speedie	Emerline Albano Louise Thompson Emma Parslow Ellen Williams Marianne Evans	Nikki Davies	N/A	Tracey Lucas	Adelaide Campbell-Upton	Melanie Baston

Neurological & Musculoskeletal Sciences (NMSK)



North Bristol
NHS Trust

NMSK management team



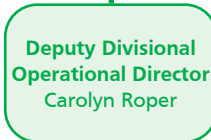
Clinical Director
Stephen Eastaugh-
Waring



**Divisional
Operational Director**
Nicholas Smith



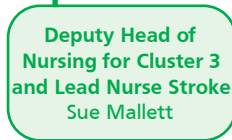
**Divisional Director
of Nursing**
Melanie De Witt



**Deputy Divisional
Operational Director**
Carolyn Roper



**Deputy Head of
Nursing
(+ Governance)**
Sarah Lidgett



**Deputy Head of
Nursing for Cluster 3
and Lead Nurse Stroke**
Sue Mallett

NMSK corporate support



Finance Partner
Jill Flannagan



People Partner
Anthony Dorman



BI Analyst
Sarah Cox

Specialties	Cluster 1			Cluster 2		Cluster 3						Bristol Centre for Enablement	Major Trauma Centre	Neuropathology	Bristol Speech & Language Therapy Research Unit
	Neurosurgery	Spines	Pain	Elective Orthopaedics	Trauma	Neurology	Stroke	Rheumatology	Neuropsychiatry	Neuropsychology	Neurophysiology				
Specialty Lead	George Malcolm	Stephen Morris	Sarah Love-Jones	James Murray	Mike Kelly	Alan Whone	Justin Pearson	Harsha Gunawardena	Anish Patel	Martin Bunnage	Peter Walsh	N/A	Ben Walton	Kathreena Kurian	Yvonne Wren
General Manager	Andrew Clark			Harriet Narey		Joanna Smithers (Cluster 3 AGM) Linda Matthews (Stroke AGM)						David Rowland	Dominique Duma	Emily Austin	N/A
Matron	Debbie Beynon - Matron			Simimole George - Matron		Emerline Albano - Matron						N/A	N/A	N/A	N/A
Ward Manager	Emma Wright Natalie Wood	Emma Wright	Rose Marriott	Helen Jones	Eva Stacey Yvonne Iles	Suzanne Moss Tanya Matthews	N/A	Penny Crawley	N/A	N/A	N/A	N/A	N/A	N/A	N/A

Women & Children's Health

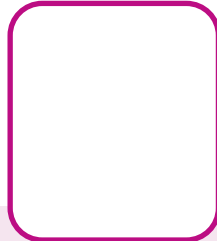
Women & Children's management team



Clinical Director
Paul Mannix



**Divisional
Operational Director**
Karen Maxfield



**Director of Midwifery/
Head of Nursing**
Sandra Reading

Women & Children's corporate support



Finance Partner
Mpho Matombo



People Partner
Geraldine Allen



BI Analyst
Helen Fenn

Specialties	Maternity	NICU	Gynaecology
Specialty Lead	Sonia Barnfield	Dr Alison Pike	Dr Jane Mears
Service Manager / AGM	Kirsty Pinner		
Lead Nurse / Matron	Central Delivery Suite/In patients - Nicola Chinnock High Risk - Sharon Jordan Community - Maggie Smith Specialist Midwives/Antenatal Services and Fetal Medicine - Nic Fudge Lead Sonographer – Stacy Hazlehurst Quality and Safety – Linda Bourton Practice Development Midwife (Maternity) – Stephanie Withers	Amy Purnell	Lisa Ford
Ward Manager	Percy Phillips Ward - Katherine Roberts Quantock Ward and Assessment Unit – Carli Bleaken Mendip Birth Centre – Kay Sutton Cossham Birth Centre – Rebecca Franklin Antenatal Clinic Manager – Joanne Arkwright Fetal Medicine – Caroline Crawley Practice Development Midwife (Maternity) – Debbie Senior	Helen Slocombe Practice Development (NICU) – Claire Johnson	Cotswold Ward – Nicola Carey