



General Information

A. LOCATION

Oriental Mindoro is located in Region IV-B, otherwise known as the MIMAROPA Region. It lies 45 kilometers south of Batangas and 130 kilometers south of Manila.

B. BOUNDARY

It is bounded by Verde Island Passage on the North; Maestro del Campo Island and Tablas Strait on the East; Semirara Island on the South; and Occidental Mindoro on the West.

C. TOPOGRAPHY

Oriental Mindoro has a rugged terrain and an irregular coastline. Numerous rivers and streams traverse the province but none are navigable by large vessels.

D. CLIMATE

The province has two climate types: Type I and Type III. Type I is characterized by two pronounced seasons, dry and wet. Type III has no pronounced season, relatively dry from November to April and wet during the rest of the year.

E. LAND AREA

Oriental Mindoro has a total land area of 4,364.72 square kilometers or 436,472 hectares. It represents 1.5 % of the total land area of the country and 16% of the MIMAROPA Region.

F. LEGAL BASIS: RA 505 (Division of Mindoro)

G. DATE OF APPROVAL: November 15, 1950

H. CONGRESSIONAL DISTRICTS: two

I. NUMBER OF COMPONENT CITY: one

J. NUMBER OF MUNICIPALITIES: 14

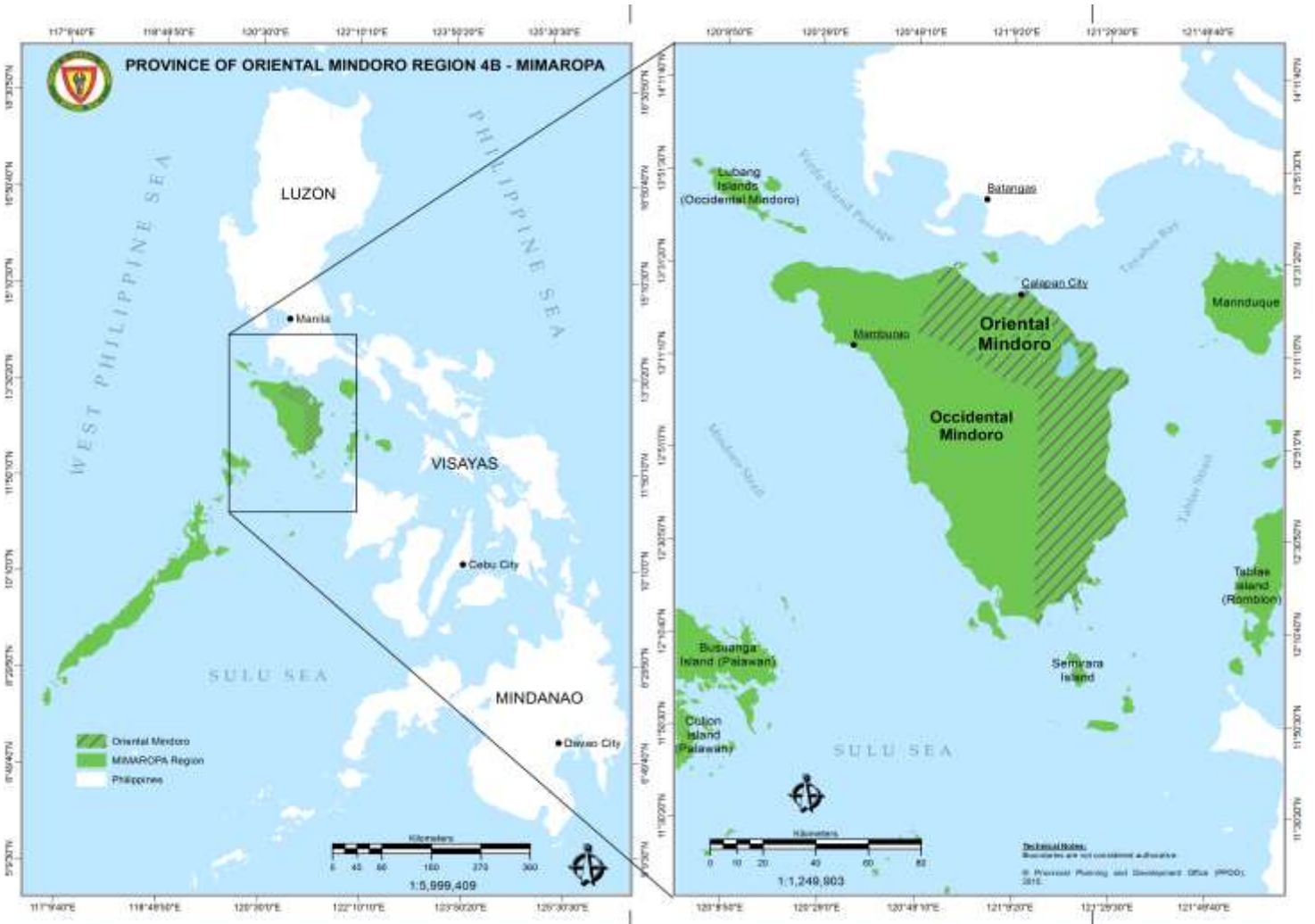
K. NUMBER OF BARANGAYS: 426

L. CAPITAL: Calapan City





Oriental Mindoro Location Map





Oriental Mindoro Base Map



Source: Provincial Planning and Development Office, 2015



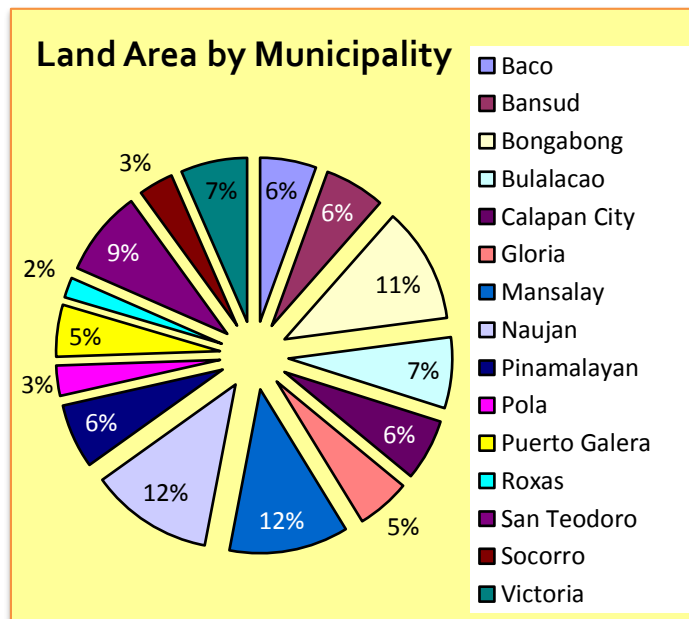


Land and other Natural Resources

A. LAND AREA BY MUNICIPALITY

| Municipality | Land Area (sq. km) | % to Total |
|--------------------------------|--------------------|---------------|
| 1st District | | |
| Baco | 241.70 | 5.54 |
| Calapan City | 265.20 | 6.08 |
| Naujan | 528.00 | 12.10 |
| Pola | 130.20 | 2.98 |
| Puerto Galera | 223.50 | 5.12 |
| San Teodoro | 369.10 | 8.46 |
| Socorro | 149.40 | 3.42 |
| Victoria | 286.00 | 6.55 |
| 2nd District | | |
| Bansud | 260.00 | 5.96 |
| Bongabong | 498.20 | 11.41 |
| Bulalacao | 305.12 | 6.99 |
| Gloria | 230.80 | 5.29 |
| Mansalay | 513.10 | 11.76 |
| Pinamalayan | 277.30 | 6.35 |
| Roxas | 87.10 | 1.99 |
| ORIENTAL MINDORO | 4,364.72 | 100.00 |

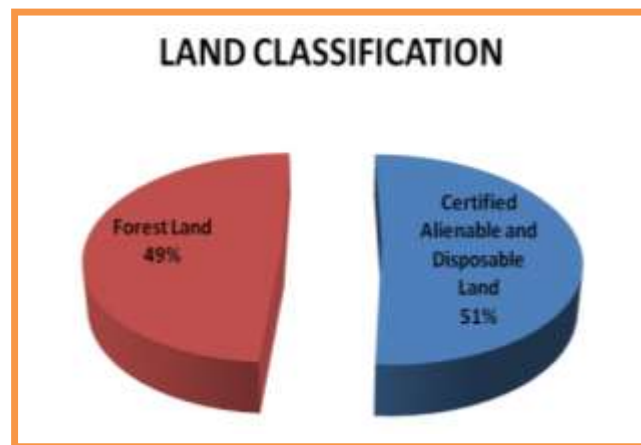
Source: Provincial Assessor Office, 2015



B. LAND CLASSIFICATION STATISTICS

| Land Classification Statistics | | Land Area (sq. km) |
|---|-----------------|--------------------|
| Certified Alienable and Disposable Land | | 2,228.95 |
| Forest Land | | 2,135.77 |
| Unclassified | 1.48 | |
| Classified | 2,134.29 | |
| Total | | 4,364.72 |

Source: Phil. Forestry Statistics, 2013



C. GEOGRAPHICAL ZONE SURFACES

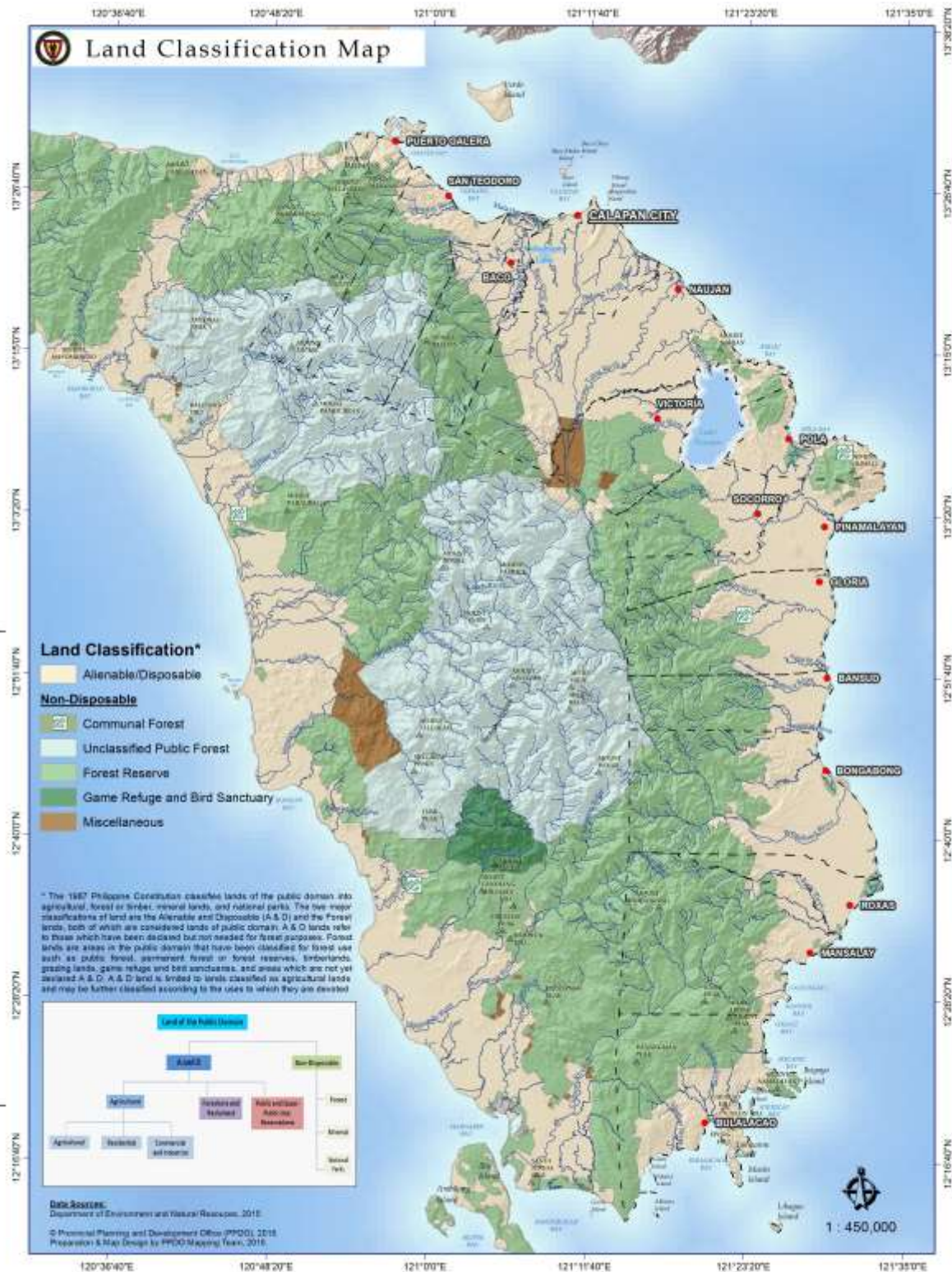
| | |
|--|----------------------------|
| ☼ Coastal Areas | 342.45 km |
| ☼ Lake Areas | 81.28 sq. km |
| ☼ Riparian areas, rich fertile valleys and mountainous areas | 89% of its total land mass |

Source: Provincial Environment and Natural Resources Office





Land Classification Map



Source: Provincial Planning and Development Office, 2015



D. MINERAL RESOURCES

1. Location of Metallic Mineral Resources

| Mineral Commodity | Location |
|-------------------|--|
| Gold | Baco (Dulangan and Binaybay), Puerto Galera |
| Copper | Naujan (San Andres), Socorro, Bongabong (Acliang and Pajo) |
| Chromite | Gloria (Banus 1 & 2), Bansud |
| Nickel | Bansud, Bongabong, Victoria |
| Iron | Baco (Binaybay), Puerto Galera (Balatero), San Teodoro |
| Marble | San Teodoro |

Source: Mines & Geosciences Bureau, 2011 and Environment and Natural Resources Office, 2015

2. Non-Metallic Minerals (Gravel and Sand)

| City/Municipality | Total [cu.m.] | Total Value (Php) | City/Municipality | Total [cu.m.] | Total Value (Php) |
|--------------------------------------|----------------|----------------------|--------------------------------------|----------------|---------------------|
| First District | | | Second District | | |
| Baco | 21,250 | 338,427.50 | Roxas | 23,000 | 307,457.50 |
| Calapan City | 45,500 | 573,445.00 | Bansud | 2,500 | 55,530.00 |
| Naujan | 455,250 | 6,204,465.00 | Bongabong | 217,000 | 3,608,832.00 |
| Victoria | 43,250 | 670,595.00 | Bulalacao | 250 | 11,717.50 |
| Socorro | 8,000 | 100,000.00 | Gloria | 39,000 | 601,827.50 |
| | | | Mansalay | 14,250 | 179,690.00 |
| | | | Pinamalayan | 31,250 | 397,667.50 |
| 1st District Total | 573,250 | 7,886,932.50 | 2nd District Total | 327,250 | 5,162,722.00 |
| Oriental Mindoro | 900,500 | 13,049,654.50 | | | |

Source: Environment and Natural Resources Office, 2015

E. FOREST COVER

Forest cover of MIMAROPA by province, December 31, 2010

| FOREST AREA in (sq. km) | | | | |
|-------------------------|---------------|-----------------|---------------|-----------------|
| PROVINCE | CLOSED | OPEN | MANGROVE | TOTAL |
| Marinduque | 0 | 122.55 | 28.77 | 151.32 |
| Occidental Mindoro | 19.68 | 1,014.24 | 15.94 | 1,049.86 |
| Oriental Mindoro | 53.01 | 777.31 | 39.49 | 869.81 |
| Palawan | 868.77 | 5,415.90 | 638.21 | 6,922.88 |
| Romblon | 36.64 | 115.29 | 10.84 | 162.77 |
| MIMAROPA | 978.10 | 7,445.30 | 733.24 | 9,156.64 |

Source: <http://forestry.denr.gov.ph/landuse4b.htm>

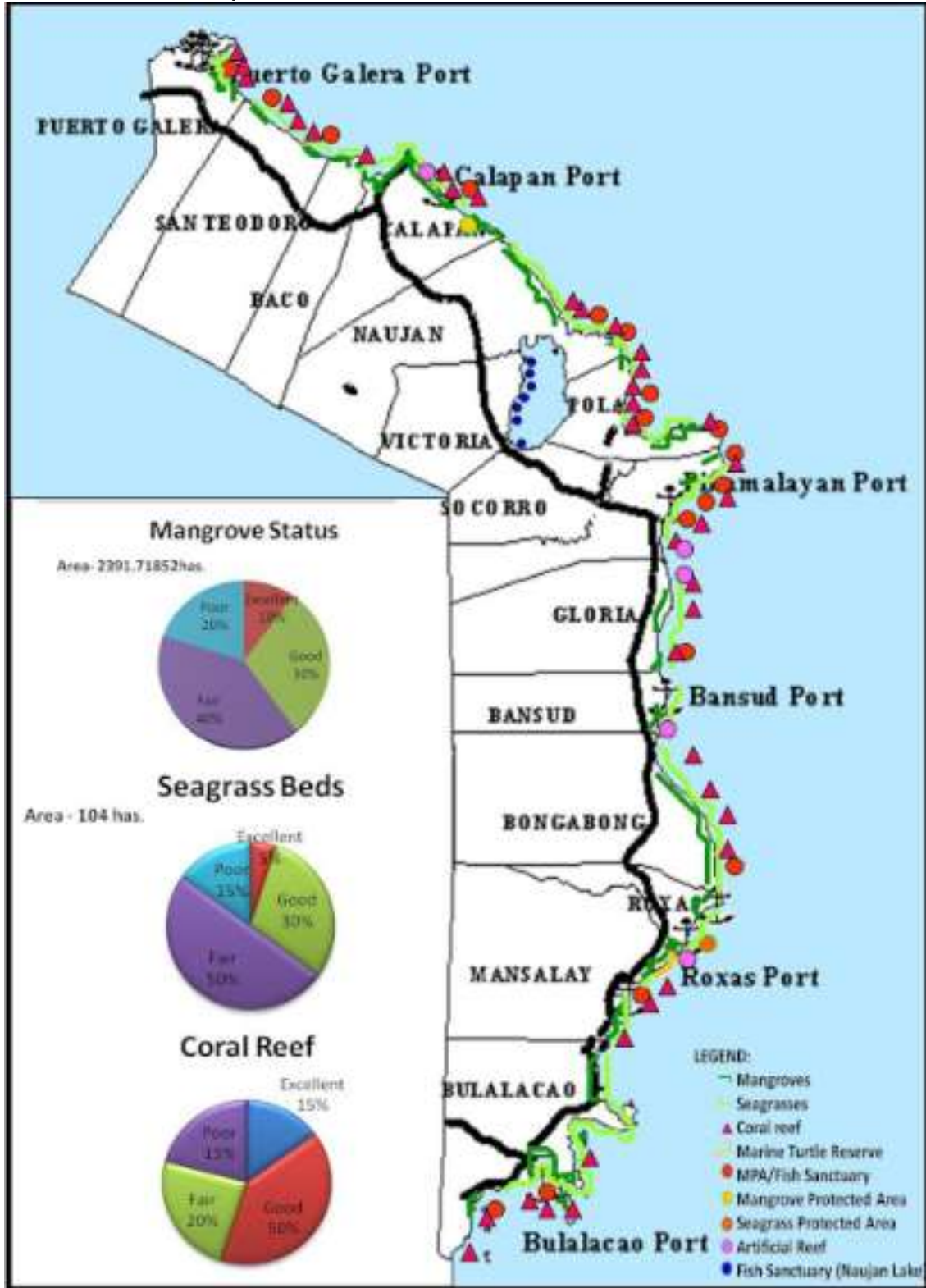
Geology & Mineral Resources Oriental Mindoro



Source: Provincial Planning and Development Office, 2015

F. COASTAL RESOURCES

1. Coastal Resources Map of Oriental Mindoro



Source: Provincial Agriculture Office - Fisheries



2. Major Species Commonly Caught

- Tanigue, tambakol, malasugi, mamsa, lapu-lapu, galunggong, tuna, herrings, hasa-hasa, kalapato, caranx, dalagang-bukid, alumahan, bisugo, samaral, anchovies, sardines

3. Minor Species other than Fish

- Squid, shrimp, prawn, octopus, mudcrab, shells, lobster, cuttlefish, mussel, oyster, blue crabs, seaweed and sea cucumber

4. Marine Protected Areas as Percent of Total Area of Municipal Waters

| CITY/MUNICIPALITY | MUNICIPAL WATERS | MPA (has.) | MPA Percentage |
|--------------------------------|-------------------|----------------|----------------|
| 1st District | | | |
| Baco | 16,004.16 | 152.53 | 0.950 |
| Calapan City | 26,726.81 | 37.44 | 0.140 |
| Naujan | 29,619.73 | 46.39 | 0.156 |
| Pinamalayan | 30,800.53 | 61.08 | 0.198 |
| Pola | 30,374.38 | 203.32 | 0.669 |
| Puerto Galera | 13,916.91 | 250.00 | 1.796 |
| San Teodoro | 4,520.27 | 112.47 | 2.488 |
| 2nd District | | | |
| Bansud | 13,218.54 | 45.07 | 0.340 |
| Bongabong | 32,112.78 | 21.68 | 0.067 |
| Bulalacao | 59,250.33 | 238.06 | 0.401 |
| Gloria | 13,684.06 | 174.53 | 1.275 |
| Mansalay | 22,974.30 | 288.79 | 1.257 |
| Roxas | 16,965.92 | 30.00 | 0.176 |
| ORIENTAL MINDORO | 310,168.72 | 1661.36 | 0.535 |

Source: Provincial Agriculture Office, 2015



5. Established Marine Protected Areas

| Location/ Municipality | Barangay | Name of MPA | Area (has.) | Year Established |
|---------------------------|--|--|--------------------------|---------------------|
| Calapan City | Lazareto | Harka Piloto Fish Sanctuary | 37.44 | 2003 |
| | Silonay | Silonay Mangrove Conservation Area | 41.00 | 2010 |
| San Teodoro | Ilag | Punta Ilag Fish Sanctuary | 23.10 | 2009 |
| | Tacligan | Tamauyan Reef Fish Sanctuary | 89.37 | 2006 |
| Puerto Galera | San Antonio | Pto. Galera Fish Sanctuary | 4,828.00 (250 NTZ) | 2006 |
| | Dulangan and Tabinay | Puerto Galera Mangrove Conservation and Ecotourism Area | 17.8 | 2015 |
| Naujan | Sitio Tujod, Herrera | Tujod Fish Sanctuary | 30.00 | 2006 |
| | Masaguing | Masaguing Fish Sanctuary | 16.39 | 2010 |
| Pola | Bacawan | Bacawan Fish Sanctuary | 23.44 | 2006 |
| | Puting Cacao | St. John the Baptist Fish Sanctuary | 49.38 | 2010 |
| | Tagumpay | St. Peter the Rock Fish Sanctuary | 25.11 | 2010 |
| | Calima | Stella Mariz Fish Sanctuary | 30.12 | 2013 |
| | Misong | Song of the Sea Fish Sanctuary | 60.61 | 2013 |
| | Tiguihan | Kingfisher Fishery Reserve | 14.66 | 2013 |
| Pinamalayan | Ranzo | Ranzo Fish Sanctuary | 16.39 | 2006 |
| | Sitio Simboryo, Banilad | Banilad-Simboryo Fish Sanctuary | 10.41 | 2010 |
| | Sitio Ginapangan, Banilad | Banilad-Ginapangan Fish Sanctuary | 10.28 | 2010 |
| | Sitio Bulaklak, Pili | Pili Fish Sanctuary | 24.00 | 2010 |
| Gloria | Agsalin | Agsalin Fish Sanctuary | 80.13 | 2003 |
| | Sta. Theresa | Sta. Theresa Fishery Reserve | 14.00 | 2013 |
| | Tambong | Tambong Fishery Reserve | 80.4 | 2013 |
| Bansud | Proper Tiguisan | Bansud Fish Sanctuary | 45.07 | 2012 |
| Bongabong | Masaguisi | Masaguisi Fish Sanctuary | 21.68 | 2006 |
| Roxas | Paclasan | Paclasan Fish Sanctuary | 30.00 | 2012 |
| Mansalay | Palaypay Cove & Balanga Point, B. Del Mundo | Palaypay Cove Fish Sanctuary | 82.79 | 2006 |
| | Tikling Point, Sta. Brigida | Allegria Sea Turtle Habitat | 934.61m. shoreline | 2008 |
| | Don Pedro & Cabalwa | Mangal Marine Protected Area | 206.00 | 2014 |
| Bulalacao | Balatasan | Balatasan Fish Sanctuary | 179.00 | 1999 |
| | Maasin | Maasin Fish Sanctuary | 19.06 | 2014 |
| | Maujao | Maujao Fish Sanctuary | 40.00 | 2009 |
| Baco | San Andres & Pulantubig | Baco Marine Protected Area | 152.53 (32.71 NTZ) | 2015 |

Source: Provincial Agriculture Office, 2015

Note: NTZ – No Take Zone

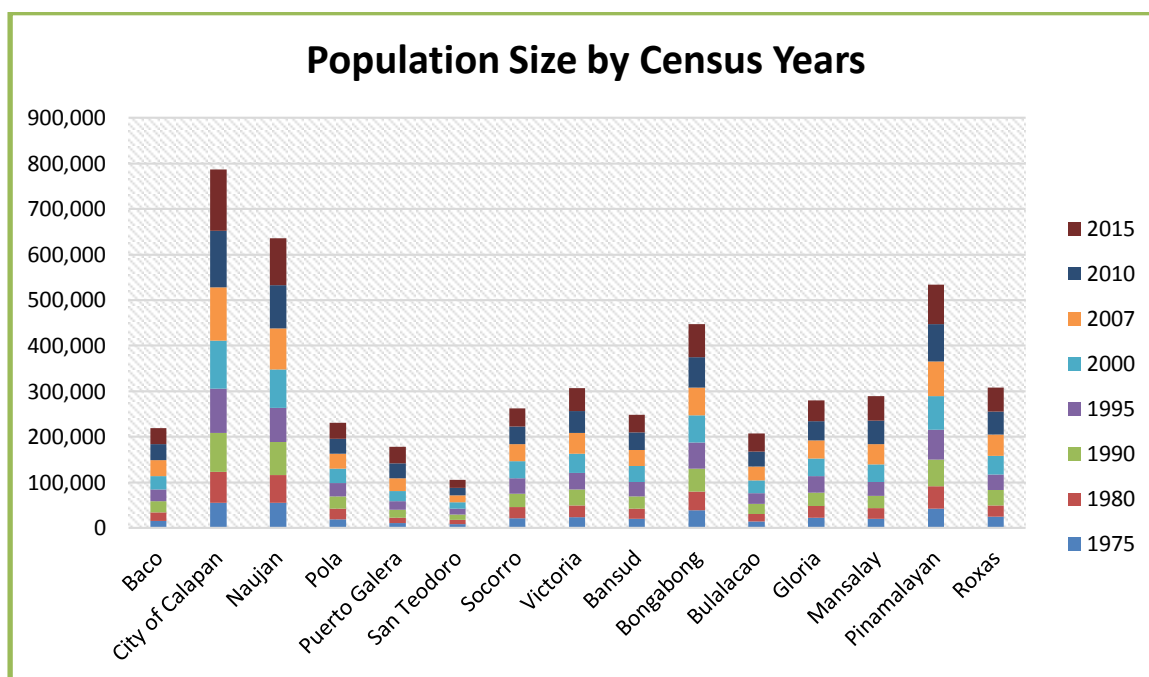


Demography

A. POPULATION SIZE BY MUNICIPALITY BY CENSUS YEARS

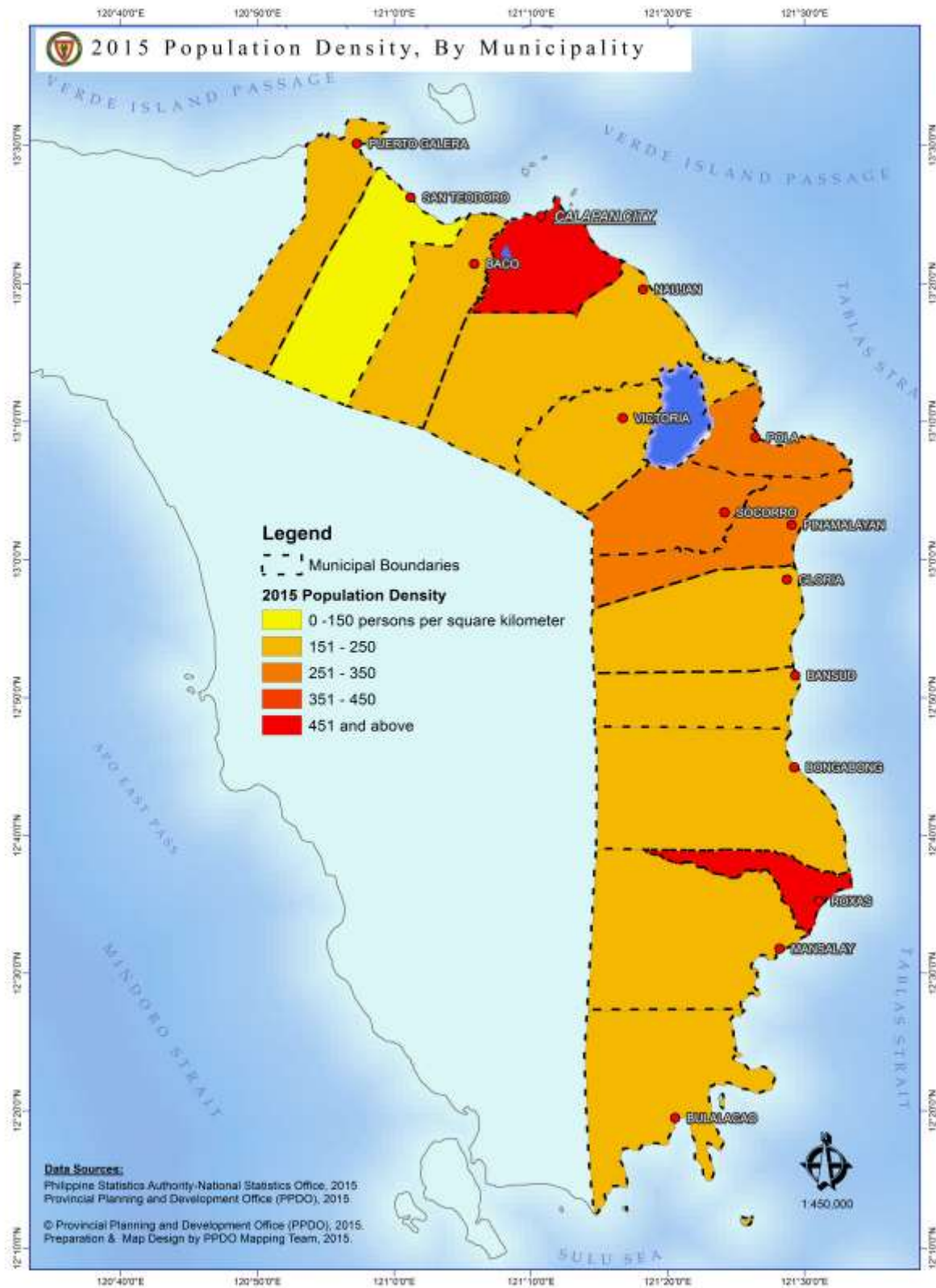
| MUNICIPALITY | CENSUS YEARS | | | | | | | |
|--------------------------------|----------------|----------------|----------------|----------------|----------------|----------------|----------------|----------------|
| | 1975 | 1980 | 1990 | 1995 | 2000 | 2007 | 2010 | 2015 |
| 1st District | | | | | | | | |
| Baco | 15,738 | 18,607 | 23,800 | 25,915 | 30,167 | 34,127 | 35,060 | 35,060 |
| City of Calapan | 55,608 | 67,370 | 85,898 | 96,506 | 105,910 | 116,976 | 124,173 | 133,893 |
| Naujan | 54,641 | 61,216 | 72,203 | 75,726 | 83,892 | 90,629 | 94,497 | 102,998 |
| Pola | 19,072 | 23,188 | 26,833 | 29,156 | 31,938 | 32,635 | 32,984 | 34,701 |
| Puerto Galera | 10,129 | 12,306 | 17,200 | 19,485 | 21,925 | 28,035 | 32,521 | 36,606 |
| San Teodoro | 7,862 | 9,707 | 12,223 | 12,983 | 13,806 | 15,039 | 15,810 | 17,904 |
| Socorro | 20,868 | 24,332 | 29,806 | 34,182 | 37,176 | 38,052 | 38,348 | 39,099 |
| Victoria | 23,568 | 26,225 | 34,760 | 35,828 | 42,873 | 44,932 | 48,308 | 50,492 |
| 2nd District | | | | | | | | |
| Bansud | 20,095 | 22,614 | 26,225 | 31,901 | 35,032 | 35,664 | 38,341 | 38,341 |
| Bongabong | 38,358 | 41,719 | 50,213 | 57,403 | 59,477 | 61,127 | 66,569 | 72,073 |
| Bulalacao | 14,038 | 16,926 | 21,316 | 24,047 | 27,698 | 30,188 | 33,754 | 39,107 |
| Gloria | 22,249 | 25,291 | 30,102 | 35,771 | 38,667 | 40,561 | 42,012 | 45,073 |
| Mansalay | 19,544 | 23,548 | 27,515 | 29,765 | 39,041 | 43,974 | 51,705 | 54,533 |
| Pinamalayan | 42,701 | 48,431 | 58,777 | 65,903 | 72,951 | 77,119 | 81,666 | 86,172 |
| Roxas | 24,273 | 25,458 | 33,178 | 34,045 | 41,265 | 46,711 | 49,854 | 53,201 |
| ORIENTAL MINDORO | 388,744 | 446,938 | 550,049 | 608,616 | 681,818 | 735,769 | 785,602 | 844,059 |

Source: Philippine Statistics Authority





2015 Actual Population Density, By Municipality



Source: Provincial Planning and Development Office, 2015

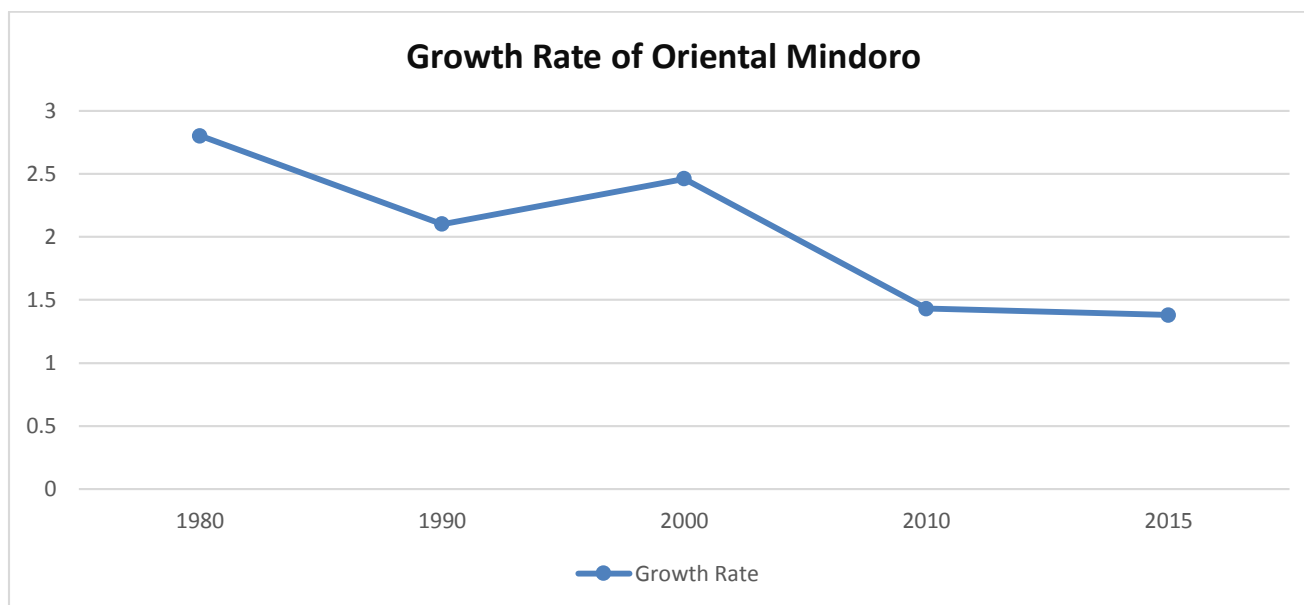




B. ACTUAL AND PROJECTED POPULATION AND NUMBER OF HOUSEHOLDS, GROWTH RATE BY MUNICIPALITY

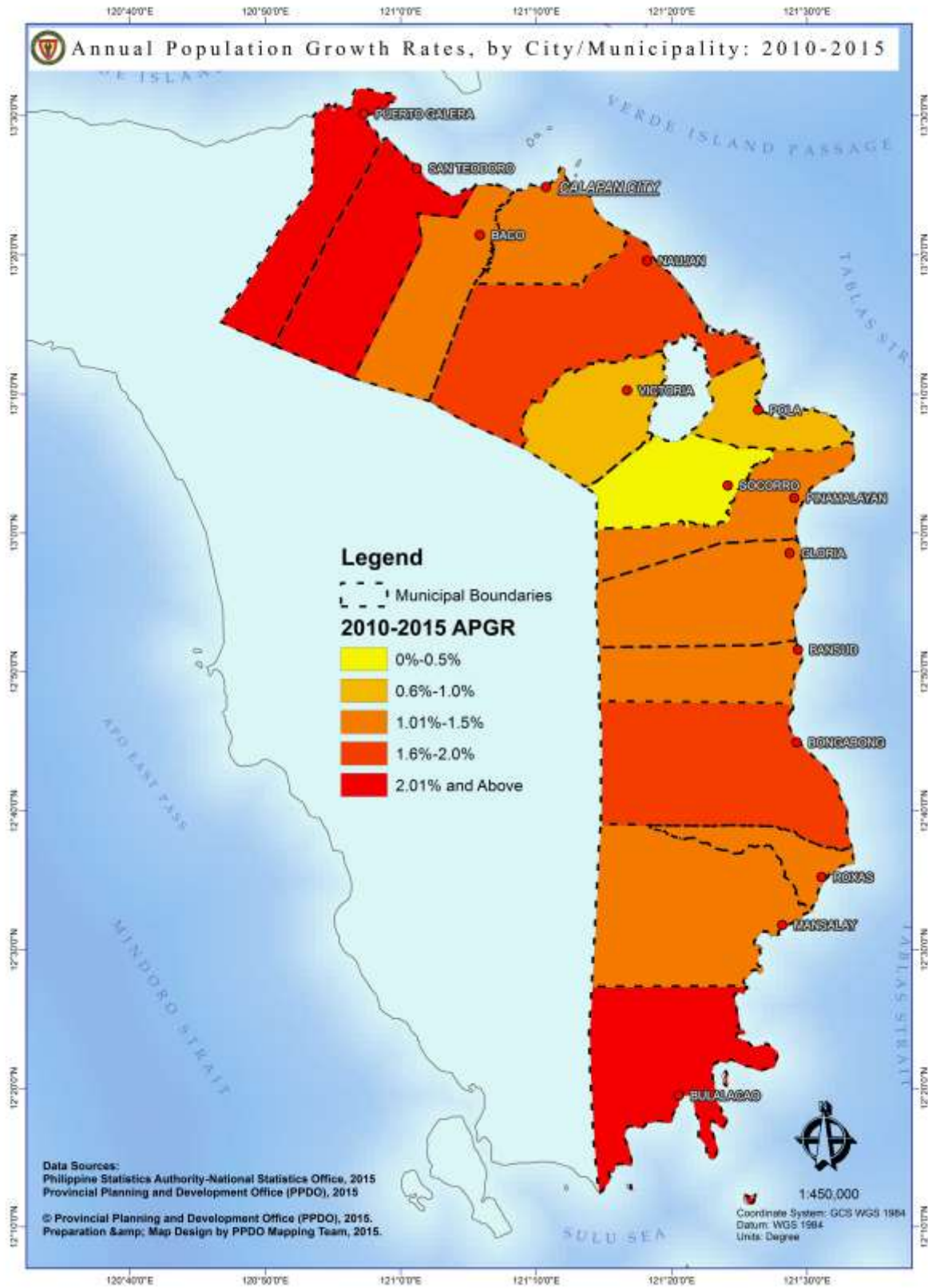
| Municipality | 2010 | | 2015(Actual) | | 2025 (Projected) | | Growth Rate % | |
|--------------------------------|------------------|-----------------|------------------|-----------------|------------------|-----------------|---------------|-------------|
| | Total Population | Total Household | Total Population | Total Household | Total Population | Total Household | 2007-2010 | 2010-2015 |
| 1st District | | | | | | | | |
| Baco | 35,060 | 7,483 | 37,215 | 8,090 | 41,682 | 8,336 | 0.90 | 1.14 |
| City of Calapan | 124,173 | 27,242 | 133,893 | 29,754 | 154,472 | 30,894 | 2.01 | 1.44 |
| Naujan | 94,497 | 21,479 | 102,998 | 23,953 | 121,312 | 24,262 | 1.40 | 1.65 |
| Pola | 32,984 | 7,582 | 34,701 | 8,070 | 38,218 | 7,643 | 0.36 | 0.97 |
| Puerto Galera | 32,521 | 7,661 | 36,606 | 8,715 | 45,863 | 9,172 | 5.07 | 2.28 |
| San Teodoro | 15,810 | 3,508 | 17,904 | 3,978 | 22,696 | 4,539 | 1.68 | 2.40 |
| Socorro | 38,348 | 8,850 | 39,099 | 9,092 | 40,570 | 8,114 | 0.26 | 0.37 |
| Victoria | 48,308 | 10,485 | 50,492 | 10,976 | 54,952 | 10,990 | 2.44 | 0.85 |
| 2nd District | | | | | | | | |
| Bansud | 38,341 | 8,459 | 40,992 | 9,109 | 46,552 | 9,310 | 2.44 | 1.28 |
| Bongabong | 66,569 | 14,758 | 72,073 | 16,016 | 83,809 | 16,761 | 2.88 | 1.52 |
| Bulalacao | 33,754 | 7,427 | 39,107 | 86,690 | 51,746 | 10,349 | 3.79 | 2.84 |
| Gloria | 42,012 | 9,400 | 45,073 | 10,016 | 51,541 | 10,308 | 1.18 | 1.35 |
| Mansalay | 51,705 | 10,193 | 54,533 | 12,118 | 60,358 | 12,071 | 5.55 | 1.02 |
| Pinamalayan | 81,666 | 18,043 | 86,172 | 19,149 | 95,471 | 19,094 | 1.93 | 1.03 |
| Roxas | 49,854 | 10,386 | 53,201 | 11,822 | 60,178 | 12,035 | 2.19 | 1.24 |
| ORIENTAL MINDORO | 785,602 | 172,956 | 844,059 | 267,548 | 968,045 | 193,878 | 2.21 | 1.38 |

Source: Philippine Statistics Authority, 2010 Census of Population





Annual Population Growth Rates, By Municipality: 2010-2015



Source: Provincial Planning and Development Office, 2015





C. HOUSEHOLD POPULATION BY SEX AND CITY/MUNICIPALITY, ORIENTAL MINDORO, 2007 AND 2010

| MUNICIPALITY | 2010 | | | 2007 | | |
|--------------------------------|----------------------------|----------------|----------------|----------------------------|----------------|----------------|
| | Total Household Population | Male | Female | Total Household Population | Male | Female |
| 1st District | | | | | | |
| Baco | 35,060 | 18,030 | 17,030 | 34,127 | 17,654 | 16,473 |
| Calapan City | 123,480 | 62,076 | 61,404 | 116,399 | 58,463 | 57,936 |
| Naujan | 94,448 | 48,492 | 45,956 | 90,580 | 46,674 | 43,906 |
| Pola | 32,984 | 16,831 | 16,153 | 32,635 | 16,814 | 15,821 |
| Puerto Galera | 32,408 | 16,539 | 15,869 | 27,997 | 14,301 | 13,696 |
| San Teodoro | 15,801 | 8,070 | 7,731 | 15,027 | 7,724 | 7,303 |
| Socorro | 38,336 | 19,448 | 18,888 | 38,022 | 19,519 | 18,503 |
| Victoria | 48,308 | 24,664 | 23,644 | 44,932 | 23,211 | 21,721 |
| 2nd District | | | | | | |
| Bansud | 38,223 | 19,488 | 18,735 | 35,543 | 18,238 | 17,305 |
| Bongabong | 66,568 | 33,972 | 32,596 | 61,115 | 31,133 | 29,982 |
| Bulalacao | 33,753 | 17,438 | 16,315 | 30,188 | 15,522 | 14,666 |
| Gloria | 42,010 | 21,277 | 20,733 | 40,527 | 20,598 | 19,929 |
| Mansalay | 51,705 | 26,502 | 25,203 | 43,974 | 22,615 | 21,359 |
| Pinamalayan | 81,552 | 41,288 | 40,264 | 76,980 | 39,203 | 37,777 |
| Roxas | 49,739 | 25,256 | 24,483 | 46,614 | 23,603 | 23,011 |
| ORIENTAL MINDORO | 784,375 | 399,371 | 385,004 | 734,660 | 375,272 | 359,388 |

Source: Philippine Statistics Authority

D. LIFE EXPECTANCY

| Life Expectancy at Birth* | 2010-2015 | 2005-2010 | 2000-2005 |
|---------------------------|-----------|-----------|-----------|
| Male | 68.85 | 67.35 | 65.85 |
| Female | 73.69 | 72.19 | 70.69 |

* In years; medium assumption; 2000 Census-Based National, Regional and Provincial Projections

Source: PSA Quickstat, September 2015





E. PROJECTED POPULATION BY PROVINCE, MIMAROPA, 2013-2015

| Province | Actual Population | | Growth Rate 2000-2010 | Population Projection | | |
|-------------------------|-------------------|------------------|--------------------------|-----------------------|------------------|------------------|
| | 2000 | 2010 | | 2013 | 2014 | 2015 |
| Occidental Mindoro | 380,250 | 452,971 | 1.76 | 477,311 | 485,712 | 494,261 |
| Oriental Mindoro | 681,818 | 785,602 | 1.43 | 819,789 | 831,512 | 843,403 |
| Marinduque | 217,392 | 227,828 | 1.60 | 238,940 | 242,763 | 246,647 |
| Romblon | 264,357 | 283,930 | 0.72 | 290,107 | 310,995 | 313,234 |
| Palawan | 593,500 | 771,667 | 2.66 | 834,899 | 857,107 | 879,906 |
| Puerto Princesa City | 161,912 | 222,673 | 3.24 | 245,026 | 252,965 | 261,161 |
| MIMAROPA | 2,299,229 | 2,744,671 | 1.79 | 2,906,071 | 2,958,090 | 3,011,040 |

Note: 2010 – Actual Philippine Statistics Authority Census of Population

F. URBAN-RURAL POPULATION, 2007 & 2010

| Municipality | No. of Barangays | | | Population | | | | | | | |
|--------------------------------|------------------|------------|------------|----------------|--------------|----------------|--------------|----------------|--------------|----------------|--------------|
| | Urban | Rural | Total | 2007 | | | | 2010 | | | |
| | | | | Urban | % | Rural | % | Urban | % | Rural | % |
| 1st District | | | | | | | | | | | |
| Baco | 1 | 26 | 27 | 2,717 | 7.96 | 31,410 | 92.04 | 2,846 | 8.12 | 32,214 | 91.88 |
| Calapan City | 5 | 57 | 62 | 20,127 | 17.21 | 96,849 | 82.79 | 18,131 | 14.60 | 106,042 | 85.40 |
| Naujan | 4 | 66 | 70 | 9,165 | 10.11 | 81,464 | 89.89 | 9,040 | 9.57 | 85,457 | 90.43 |
| Pola | 2 | 21 | 23 | 1,296 | 3.97 | 31,339 | 96.03 | 1,085 | 3.29 | 31,899 | 96.71 |
| Puerto Galera | 3 | 10 | 13 | 9,920 | 35.38 | 18,115 | 64.62 | 11,577 | 35.60 | 20,944 | 64.40 |
| San Teodoro | 1 | 7 | 8 | 1,990 | 13.23 | 13,049 | 86.77 | 1,734 | 10.97 | 14,076 | 89.03 |
| Socorro | 6 | 20 | 26 | 8,394 | 22.06 | 29,658 | 77.94 | 8,295 | 21.63 | 30,053 | 78.37 |
| Victoria | 7 | 25 | 32 | 14,626 | 32.55 | 30,306 | 67.45 | 16,212 | 33.56 | 32,096 | 66.44 |
| 2nd District | | | | | | | | | | | |
| Bansud | 3 | 10 | 13 | 12,245 | 34.33 | 23,419 | 65.67 | 14,181 | 36.99 | 24,160 | 63.01 |
| Bongabong | 1 | 35 | 36 | 1,306 | 2.14 | 59,821 | 97.86 | 1,626 | 2.44 | 64,943 | 97.56 |
| Bulalacao | 4 | 11 | 15 | 8,858 | 29.34 | 21,330 | 70.66 | 10,624 | 31.47 | 23,130 | 68.53 |
| Gloria | 6 | 21 | 27 | 13,106 | 32.31 | 27,455 | 67.69 | 12,924 | 30.76 | 29,088 | 69.24 |
| Mansalay | 3 | 14 | 17 | 11,682 | 26.57 | 32,292 | 73.43 | 13,620 | 26.34 | 38,085 | 73.66 |
| Pinamalayan | 9 | 28 | 37 | 25,717 | 33.35 | 51,402 | 66.65 | 27,803 | 34.04 | 53,863 | 65.96 |
| Roxas | 4 | 16 | 20 | 16,748 | 35.85 | 29,963 | 64.15 | 18,151 | 36.41 | 31,703 | 63.59 |
| Oriental Mindoro | 59 | 367 | 426 | 157,897 | 21.46 | 577,872 | 78.54 | 167,849 | 21.37 | 617,753 | 78.63 |

Source: Philippine Statistics Authority, 2007 and 2010

Note: Details may not add up to totals due to rounding



G. POPULATION DENSITY

| Municipality | GROSS POPULATION DENSITY (per sq.km.) | | URBAN POPULATION DENSITY (per sq.km.) | |
|--------------------------------|---------------------------------------|------------|---------------------------------------|------------|
| | 2007 | 2010 | 2007 | 2010 |
| 1st District | | | | |
| Baco | 141 | 145 | 625 | 655 |
| Calapan City | 441 | 468 | 4541 | 4091 |
| Naujan | 172 | 179 | 466 | 460 |
| Pola | 251 | 253 | 25920 | 21700 |
| Puerto Galera | 125 | 146 | 249 | 291 |
| San Teodoro | 41 | 43 | 3618 | 3153 |
| Socorro | 255 | 257 | 252 | 249 |
| Victoria | 157 | 169 | 441 | 489 |
| 2nd District | | | | |
| Bansud | 137 | 147 | 992 | 1149 |
| Bongabong | 123 | 134 | 261 | 325 |
| Bulalacao | 99 | 111 | 99 | 119 |
| Gloria | 176 | 182 | 535 | 527 |
| Mansalay | 86 | 101 | 231 | 270 |
| Pinamalayan | 278 | 295 | 934 | 1010 |
| Roxas | 536 | 572 | 1174 | 1272 |
| Oriental Mindoro | 169 | 180 | 440 | 467 |

Source: Philippine Statistics Authority/ Provincial Planning and Development Office, 2007 and 2010

H. MANGYAN TRIBES BY MUNICIPALITY

| Municipality | Tribes | Municipality | Tribes |
|-----------------------|----------------------------|------------------------|-------------------|
| First District | | Second District | |
| Puerto Galera | Iraya | Pinamalayan | Tadyawan/Tau-buid |
| San Teodoro | Iraya, Alangan | Gloria | Tadyawan |
| Baco | Iraya, Alangan | Bansud | Buhid/Bangon |
| Naujan | Alangan, Tadyawan | Bongabong | Buhid/Bangon |
| Victoria | Alangan, Tadyawan, Hanunuo | Roxas | Buhid/Bangon |
| Socorro | Tadyawan | Mansalay | Hanunoo |
| Pola | Tadyawan | Bulalacao | Hanunoo |

Source: Mangyan Mission and National Commission for Indigenous Peoples, 2015



I. MANGYAN HOUSEHOLDS BY SEX, 2008

| Municipality | Number of Mangyan Households Population | | |
|--------------------------------|---|---------------|---------------|
| | Total | Male | Female |
| 1st District | | | |
| Baco | 4,995 | 2,568 | 2,427 |
| Calapan City | 117 | 52 | 65 |
| Naujan | 4,654 | 2,395 | 2,259 |
| Pola | 782 | 438 | 344 |
| Puerto Galera | 2,065 | 1,092 | 973 |
| San Teodoro | 2,506 | 1,355 | 1,151 |
| Socorro | 1,222 | 646 | 576 |
| Victoria | 1,500 | 803 | 697 |
| 2nd District | | | |
| Bansud | 1,719 | 869 | 850 |
| Bongabong | 5,536 | 2,917 | 2,619 |
| Bulalacao | 10,195 | 5,307 | 4,888 |
| Gloria | 932 | 462 | 470 |
| Mansalay | 8,600 | 4,395 | 4,205 |
| Pinamalayan | 1,171 | 605 | 566 |
| Roxas | 2,111 | 1,110 | 1,001 |
| Oriental Mindoro | 48,105 | 25,014 | 23,091 |

Source: Community Based Monitoring System Survey, 2008





Economic Profile

A. AGRICULTURE

1. Rice Area by Municipality and Type

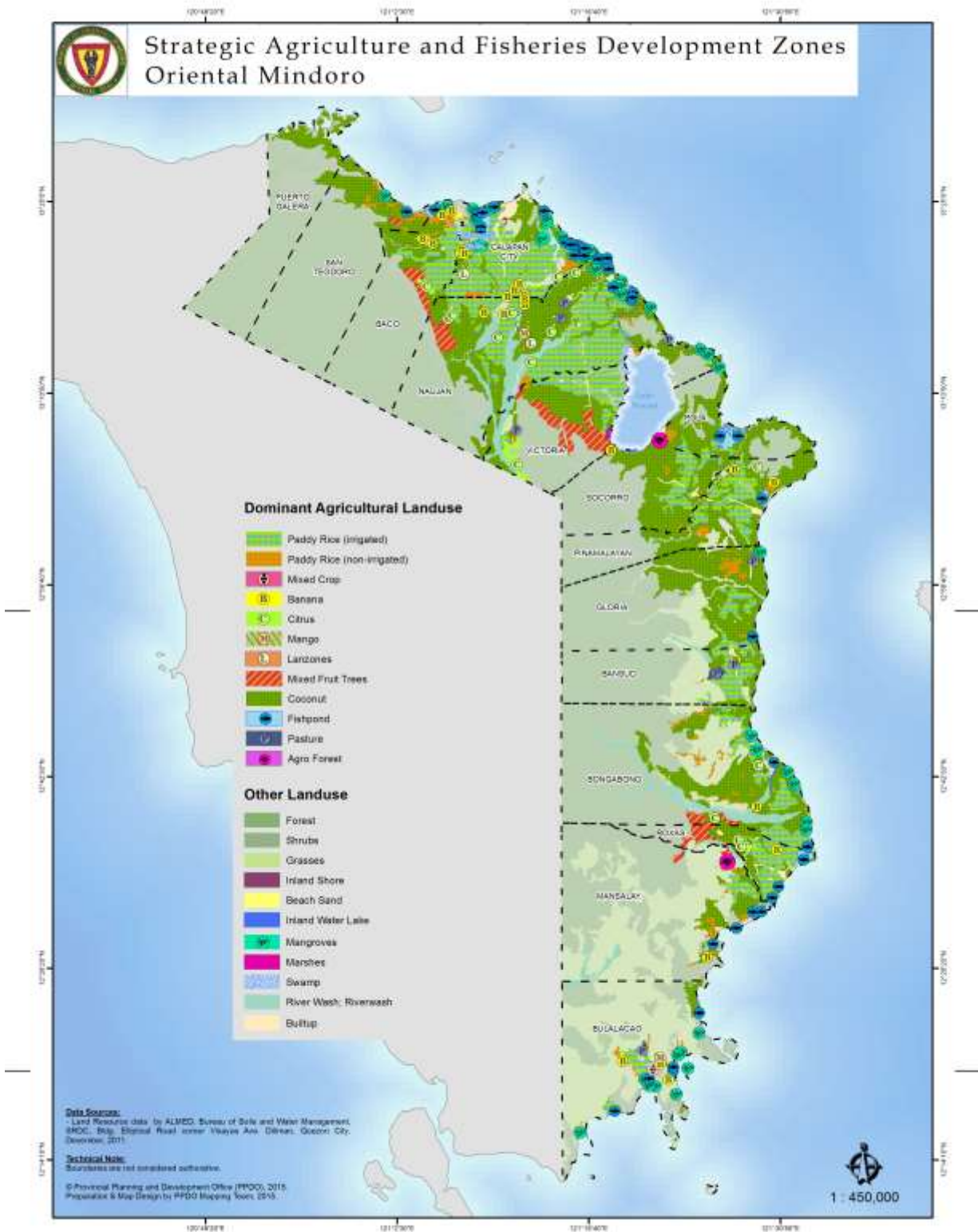
| Municipality | Irrigated Area (ha) | Rainfed Area (ha) | Total Rice Area (ha) |
|--------------------------------|---------------------|-------------------|----------------------|
| 1st District | | | |
| Baco | 2,946.00 | 2,108.00 | 5,054.00 |
| Calapan City | 14,154.00 | 1,937.50 | 16,092.00 |
| Naujan | 23,191.00 | 5,656.00 | 28,847.00 |
| Pola | 1,903.50 | 796.50 | 2,700.00 |
| Puerto Galera | 4.00 | 4.00 | 8.00 |
| San Teodoro | 300.00 | 421.00 | 721.00 |
| Socorro | 3,341.00 | 595.00 | 3,936.00 |
| Victoria | 9,020.50 | 1,388.00 | 10,408.50 |
| 2nd District | | | |
| Bansud | 5,353.50 | 432.50 | 5,786.00 |
| Bongabong | 9,150.00 | 2,168.50 | 11,318.50 |
| Bulalacao | 795.00 | 695.00 | 1,490.00 |
| Gloria | 4,922.50 | 364.00 | 5,286.50 |
| Mansalay | 3,476.00 | 2,002.00 | 5,478.00 |
| Pinamalayan | 7,079.50 | 658.00 | 7,737.50 |
| Roxas | 4,852.00 | 274.00 | 5,126.00 |
| ORIENTAL MINDORO | 90,489.00 | 19,500.00 | 109,989 |

Source: Provincial Agriculture Office, 2015





Strategic Agriculture and Fisheries Development Zones Oriental Mindoro



Source: Provincial Planning and Development Office, 2015





2. Irrigated Area by Type of Irrigation Facility by City/Municipality: 2015

| Municipality | RIS (ha) | CIS (ha) | Pump/STW (ha) | TOTAL (ha) |
|--------------------------------|-----------------|-----------------|---------------|------------------|
| 1st District | | | | |
| Baco | - | 463.00 | 240.00 | 703.00 |
| Calapan City | 4031.95 | - | - | 4031.95 |
| Naujan | 380.00 | 760.00 | 438.72 | 1578.72 |
| Pola | 60.00 | - | 70.00 | 130.00 |
| Puerto Galera | - | - | - | - |
| San Teodoro | - | - | - | - |
| Socorro | 246.00 | 954.00 | 120.00 | 1320.00 |
| Victoria | 300.00 | 592.00 | - | 892.00 |
| 2nd District | | | | |
| Bansud | 926.00 | 1159.00 | - | 2085.00 |
| Bongabong | - | 1215.00 | - | 1215.00 |
| Bulalacao | - | 356.00 | - | 356.00 |
| Gloria | - | 1156.42 | - | 1156.42 |
| Mansalay | - | 917.00 | - | 917.00 |
| Pinamalayan | 2598.00 | - | - | 2598.00 |
| Roxas | 1223.00 | 25.00 | - | 1248.00 |
| Oriental Mindoro | 9,764.95 | 7,597.42 | 868.72 | 18,231.09 |

Notes: NIA-Assisted Irrigation Systems only; STW – Shallow Tube Well; CIS – Communal Irrigation System

Source: National Irrigation Administration, 2015





3. Rice Production, farmer and Area harvest One year, by Municipality

| Municipality | Farmers (No.) | Area Harvested (ha.) | Production (MT) | Average Yield (MT/ha) |
|--------------------------------|---------------|----------------------|-------------------|-----------------------|
| 1st District | | | | |
| Baco | 3,610 | 5,054.00 | 18,672.39 | 3.67 |
| Calapan City | 6,259 | 16,092.00 | 79,873.2 | 4.96 |
| Naujan | 10,344 | 28,847.00 | 130,893.74 | 4.52 |
| Pola | 1,277 | 2,700.00 | 13,736.10 | 5.07 |
| Puerto Galera | 7 | 8.00 | 32.00 | 4.00 |
| San Teodoro | 415 | 721.00 | 2,540.47 | 3.55 |
| Socorro | 2,191 | 3,936.00 | 18,415.10 | 4.33 |
| Victoria | 4,315 | 10,408.50 | 51,800.69 | 4.90 |
| 2nd District | | | | |
| Bansud | 3,371 | 5,786.00 | 19,751.86 | 3.41 |
| Bongabong | 5,188 | 11,318.50 | 50,085.50 | 4.40 |
| Bulalacao | 1,365 | 1,490.00 | 6,700.70 | 4.30 |
| Gloria | 3,538 | 5,286.50 | 21,987.02 | 4.10 |
| Mansalay | 3,554 | 5,478.00 | 25,545.60 | 4.68 |
| Pinamalayan | 4,542 | 7,737.50 | 36,637.57 | 4.67 |
| Roxas | 2,715 | 5,126.00 | 25,568.05 | 5.00 |
| Oriental Mindoro | 51,908 | 109,989.00 | 502,239.92 | 4.60 |

Source: Provincial Agriculture Office, 2015



4. Corn area, Production and Average Yield by Municipality

| Municipality | Area Planted (ha) | Production (MT) | Average Yield (MT/ha) |
|--------------------------------|-------------------|-----------------|-----------------------|
| 1st District | | | |
| Baco | 88.0 | 123.2 | 1.4 |
| Calapan City | 59.0 | 112.1 | 1.9 |
| Naujan | 124.5 | 236.55 | 1.9 |
| Pola | - | - | - |
| Puerto Galera | 55.0 | 82.5 | 1.5 |
| San Teodoro | 16.5 | 24.75 | 1.5 |
| Socorro | | | |
| Victoria | 160.0 | 264.0 | 2.9 |
| 2nd District | | | |
| Bansud | 209.0 | 606.1 | 2.9 |
| Bongabong | 360.0 | 504.0 | 1.4 |
| Bulalacao | 398.5 | 757.15 | 1.9 |
| Gloria | 202.4 | 586.96 | 2.9 |
| Mansalay | 50.0 | 95.0 | 1.9 |
| Pinamalayan | 25.2 | 73.08 | 2.9 |
| Roxas | 37.0 | 70.3 | 1.9 |
| Oriental Mindoro | 1,785.1 | 3,535.69 | 1.98 |

Source: Provincial Agriculture Office, 2015

5. Vegetable type by Area planted/harvested, Production and Average Yield

| Commodity | Area Planted (ha) | Area Harvested (ha) | Production (MT) | Average Yield (MT/ha) |
|------------------|-------------------|---------------------|-----------------|-----------------------|
| Root Crops | 274.8 | 240.70 | 874.22 | 3.20 |
| Fruit Vegetables | 398.88 | 176.87 | 1,076.91 | 2.69 |
| Leafy Vegetables | 37.6 | 24.10 | 116.98 | 3.11 |
| Legumes | 74.60 | 32.90 | 68.31 | 0.92 |
| Condiments | 222.90 | 149.80 | 1,939.04 | 14.86 |
| Total | 1,008.78 | 624.37 | 4,075.46 | 4.04 |

Source: Provincial Agriculture Office, 2015



6. Coconut data by Municipality, area, farmers, barangay, trees planted and estimated Nut Products

| Municipality | Coconut Area (ha) | No. of Coco Farmers | No. of Coco Barangay | No. of Trees Planted | | Estimated Nut Production (wholenuts-pcs) |
|--------------------------------|-------------------|---------------------|----------------------|----------------------|------------------|--|
| | | | | Bearing | Non-Bearing | |
| 1st District | | | | | | |
| Baco | 5,140 | 2,817 | 25 | 405,234 | 116,504 | 21,072,168 |
| Calapan City | 2,811 | 1,183 | 19 | 212,856 | 65,573 | 10,642,800 |
| Naujan | 3,780 | 3,803 | 59 | 323,533 | 94,295 | 17,470,782 |
| Pola | 10,024 | 5,439 | 23 | 811,722 | 207,632 | 46,268,154 |
| Puerto Galera | 3,515 | 1,311 | 13 | 266,651 | 85,484 | 13,865,852 |
| San Teodoro | 2,146 | 1,105 | 8 | 182,322 | 72,512 | 8,569,134 |
| Socorro | 2,662 | 1,425 | 20 | 280,755 | 34,462 | 14,880,015 |
| Victoria | 1,516 | 936 | 24 | 95,209 | 35,897 | 4,760,450 |
| 2nd District | | | | | | |
| Bansud | 1,721 | 656 | 10 | 109,980 | 27,238 | 5,608,980 |
| Bongabong | 7,654 | 2,782 | 28 | 573,138 | 156,505 | 31,522,590 |
| Bulalacao | 815 | 813 | 12 | 41,778 | 22,053 | 1,712,898 |
| Gloria | 4,807 | 3,489 | 26 | 461,396 | 49,468 | 24,915,384 |
| Mansalay | 1,050 | 916 | 14 | 62,869 | 17,259 | 2,640,498 |
| Pinamalayan | 5,103 | 4,498 | 27 | 492,305 | 68,616 | 27,569,080 |
| Roxas | 1,439 | 1,197 | 15 | 96,683 | 21,583 | 4,157,369 |
| Oriental Mindoro | 54,183 | 32,370 | 323 | 4,416,431 | 1,075,081 | 235,656,154 |

Source: Philippine Coconut Authority, 2015

7. High Value Commercial Crops Production (HVCC) by Farmers served, trees planted, area planted, production and average yield

| Commodity | Farmers Served | No. of Trees Planted | Area Planted (ha) | Production (MT) | Average Yield (MT/ha) |
|--------------|-------------------|----------------------|-------------------|-------------------|-----------------------|
| Banana | No data available | 5,670,636 | 21,423.49 | 400,493.10 | 19.11 |
| Mango | 3,748 | 157,438 | 1,603.81 | 63,882.63 | 39.83 |
| Citrus | 2,802 | 1,935,552 | 3,573.51 | 35,595.11 | 9.96 |
| Rambutan | 1,581 | 1,387,978 | 3,446.83 | 1,639.60 | 0.48 |
| Lanzones | 1,532 | 1,462,980 | 3,659.85 | 2,981.66 | 0.81 |
| Durian | 394 | 57,628 | 373.93 | 183.34 | 0.49 |
| Papaya | 25 | 58,333 | 35.00 | 409.15 | 11.69 |
| Pineapple | 21 | 112,700 | 67.62 | 120.25 | 1.78 |
| Guyabano | 12 | 5,000 | 9.70 | 16.12 | 1.66 |
| TOTAL | 10,115 | 10,848,245 | 34,193.74 | 514,181.00 | 15.04 |

Source: Provincial Agriculture Office, 2015





8. Top Five Fruit Production by Municipality

| Municipality | Production (MT) | | | | | |
|--------------------------------|-------------------|------------------|-----------------|-----------------|------------------|-------------------|
| | Banana | Citrus | Rambutan | Lanzones | Mango | Total |
| 1st District | | | | | | |
| Baco | 4,335.76 | 545.59 | 88.08 | 0.22 | 66.10 | 5,035.75 |
| Calapan City | 6,775.45 | 1,281.20 | 19.30 | 4.45 | 17.88 | 8,098.28 |
| Naujan | 62,732.88 | 18,309.88 | 331.27 | 73.25 | 185.00 | 81,632.28 |
| Pola | 17,948.50 | 5,271.88 | 67.80 | 20.10 | 15.00 | 23,323.28 |
| Puerto Galera | 45.62 | 1,215.00 | 0.15 | | 0.18 | 1,260.95 |
| San Teodoro | 9,356.49 | 135.80 | 19.40 | 2.20 | 11.50 | 9,525.39 |
| Socorro | 36,227.10 | 4,881.37 | 170.25 | 1,534.25 | 1.20 | 42,814.17 |
| Victoria | 9,677.23 | 125.88 | 77.29 | 26.59 | 10.50 | 9,917.49 |
| 2nd District | | | | | | |
| Bansud | 45,579.02 | 29.01 | 60.50 | 22.50 | 121.55 | 45,812.58 |
| Bongabong | 36,008.50 | 388.64 | 140.50 | 15.00 | 25.00 | 36,577.64 |
| Bulalacao | 85,578.67 | - | - | - | 63,134.13 | 148,712.80 |
| Gloria | 23,307.75 | 482.66 | 23.50 | 283.35 | 14.59 | 24,111.85 |
| Mansalay | 984.45 | 779.44 | 420.00 | 846.00 | 221.00 | 3,250.89 |
| Pinamalayan | 53,345.03 | 278.10 | 112.56 | 27.75 | 21.00 | 53,784.44 |
| Roxas | 8,590.65 | 1,870.66 | 109.00 | 126.00 | 38.00 | 10,734.31 |
| Oriental Mindoro | 400,493.10 | 35,595.11 | 1,639.60 | 2,981.66 | 63,882.63 | 504,592.10 |

Source: Provincial Agriculture Office, 2015



9. Livestock Population by Municipality

| Municipality | Carabao | Cattle | Swine | Goat | Horse | Duck | Chicken |
|--------------------------------|---------------|---------------|----------------|---------------|--------------|---------------|----------------|
| 1st District | | | | | | | |
| Baco | 857 | 846 | 4,582 | 1,063 | 12 | 1,079 | 26,338 |
| Calapan City | 1,496 | 2,380 | 12,695 | 1,998 | 28 | 14,616 | 59,017 |
| Naujan | 4,277 | 4,911 | 8,681 | 3,919 | 98 | 12,512 | 67,080 |
| Pola | 1,529 | 782 | 5,488 | 2,562 | 196 | 1,176 | 35,353 |
| Puerto Galera | 195 | 363 | 975 | 881 | 22 | 433 | 20,777 |
| San Teodoro | 932 | 592 | 6,647 | 2,380 | 9 | 797 | 18,415 |
| Socorro | 567 | 824 | 7,645 | 1,102 | 63 | 3,328 | 14,521 |
| Victoria | 1,152 | 749 | 6,701 | 1,002 | 82 | 4,605 | 21,329 |
| 2nd District | | | | | | | |
| Bansud | 1,710 | 2,849 | 13,442 | 3,798 | 194 | 1,402 | 31,985 |
| Bongabong | 1,832 | 4,911 | 7,088 | 7,771 | 36 | 16,197 | 96,843 |
| Bulalacao | 1,141 | 2,637 | 4,103 | 5,973 | 16 | 695 | 18,995 |
| Gloria | 1,666 | 2,738 | 6,941 | 1,458 | 56 | 2,907 | 30,041 |
| Mansalay | 1,252 | 1,484 | 10,245 | 10,340 | 157 | 7,347 | 35,293 |
| Pinamalayan | 1,302 | 1,451 | 6,488 | 2,791 | 70 | 3,205 | 44,268 |
| Roxas | 2,044 | 2,041 | 12,164 | 4,243 | 43 | 10,563 | 44,289 |
| Oriental Mindoro | 21,952 | 29,558 | 113,885 | 51,281 | 1,082 | 80,862 | 564,544 |

Source: Provincial Veterinary Office, 2014

10. Fishery Area Production and Income

| Indicators | Area (ha) | Production (MT) | Income (Php) |
|---------------------------------------|-----------|--------------------|-------------------------|
| Freshwater | | | |
| * <i>Tilapia</i> | 157.2612 | | 6,000,921.00 |
| Brackishwater | 2,997.215 | | |
| * <i>Sugpo and Bangus Polyculture</i> | | | |
| Sugpo (30%) | | 4.3775 | 1,532,125.00 |
| Bangus (70%) | | 253.8498 | 30,461,976.00 |
| Fish cages/Fish Pen | | 3.4565 | 414,780.00 |
| Municipal Fisheries | | 32,991.88 | 3,959,025,600.00 |
| Commercial Fisheries | | 1,571.91 | 188,629,200.00 |
| TOTAL | | 34,892.1507 | 4,186,064,602.00 |

Source: Provincial Agriculture Office, 2015

Per capita fish consumption - 36.6 kg/yr
 No. of registered fisherfolk - 14,718

B. TOURISM

1. Tourist Establishments

| Municipality | No. of Establishment (Hotels/Resorts) | No. of Rooms | Bedding Capacity | Total Employment |
|--------------------------------|--|-----------------|---------------------|---------------------|
| 1st District | | | | |
| Baco | 3 | 37 | 171 | 13 |
| Calapan City | 30 | 455 | 1,365 | 197 |
| Naujan | 10 | 66 | 375 | 59 |
| Pola | 7 | 17 | 54 | 11 |
| Puerto Galera | 161 | 2,705 | 7,166 | 1,449 |
| San Teodoro | 5 | 24 | 90 | 10 |
| Socorro | 3 | 26 | 52 | 6 |
| Victoria | 7 | 36 | 96 | 14 |
| 2nd District | | | | |
| Bansud | 5 | 47 | 149 | 18 |
| Bongabong | 9 | 71 | 240 | 24 |
| Bulalacao | 5 | 26 | 77 | 5 |
| Gloria | 8 | 57 | 238 | 38 |
| Mansalay | 7 | 27 | 64 | 12 |
| Pinamalayan | 13 | 123 | 317 | 47 |
| Roxas | 21 | 132 | 282 | 42 |
| Oriental Mindoro | 294 | 3,849 | 10,736 | 1,945 |

Source: Provincial Tourism, Investment and Enterprise Development Office, 2015

2. Tourist Attractions

- ✪ The Tamaraw
- ✪ Mount Halcon
- ✪ History and Culture
- ✪ Industrial Tourism
- ✪ Nature
- ✪ Sport and Recreational Facilities
- ✪ Health and Wellness
- ✪ Other unspecified attractions



3. Tourist Sites and Destinations by Municipality

| MUNICIPALITY | TOURIST SITES AND DESTINATIONS |
|---------------|--|
| Puerto Galera | The Cross and Canyons (Muelle Bay) Garita or Spanish Guardhouse Excavation Museum Baclayan and Talipanan Mangyan Settlements Paradise Zoo (Herpa World) Giant Clam Garden Hibiscus Garden Municipal Forest Park Ponderosa White Sand Beaches (19 beaches) Premier Dive Sites (36 dive sites) Waterfalls (4 waterfalls) Coral Garden at Long Beach Tabinay and Villaflor Hot Springs Python Cave Puerto Galera Bay Mt. Malasimbo The Black Rice at Muelle Marble Mine |
| San Teodoro | Punta Baluarte Spanish Fortress Saclag Settlement Farm School Saclag Ecological Waterfalls (13 waterfalls) Agsambalilo Tabunan Hot Spring Aras Cave TagongParaiso Subuan River Saclag Hanging Bridge Punta Beach Arigoy White Water Kayaking |



| MUNICIPALITY | TOURIST SITES AND DESTINATIONS |
|--------------|--|
| Baco | Mount Halcon Rivers (4 rivers) Lantuyan and Bayanan Waterfalls Cueva Sagrada Tiboy Baras Rapids Gumahan San Andres (The Sunken Town/Old Settlement) Mangangan and Karayrayan Tunnels Nature's Park Baco Infinity Farm |
| Calapan City | Calapan Recreational and Zoological Park Bulusan-Suqui Eco Trail Pachoca-Balite and Lazareto, Suqui-Parang Beaches Caluangan Lake Islets (4 islets) Parang Coconut and Banana Plantations Sapul Orchard Casa Real Ruins Calapan City Hall Silonay Mangrove Conservation and Protection Area Kayak, Boardwalk Calapan Town Plaza |
| Naujan | Naujan Lake Pungao and Montelago Hot Springs Waterfalls (5 waterfalls) Bancuro Church Ruins Baluarte (Bell Tower) Sta. Isabel Tree Farm MILAR Aquatic Farm Bancuro Butterfly Sanctuary Naujan Town Plaza |
| Victoria | Tongloy Mountain Lake Fruit Orchards Philippine Tree Farm, Inc. Polester and Butterfly Farms Gipit Picnic Grove Villa Bautista Resort Triple L Resort |
| Socorro | Batong Dalig River La Fortuna Waterfalls Lake View Park Tree Farms Tyron Butterfly Breeding Farm Marl Insects and Butterfly Culture Branch |





| MUNICIPALITY | TOURIST SITES AND DESTINATIONS |
|--------------|--|
| Pola | Tuntong Point Waterfalls (5 waterfalls) St. John the Baptist Shrine Misong Archaeological Site Old Houses Misong Mangrove Forest Aguada Beach |
| Pinamalayan | Rosario Cave Cawa-cawa Cave and Marayos Waterfalls Mahabang Buhangin Banilad Bayview Mts. Dumali, Beyer and Worcester Bongol Point Pili-Banilad-Ranzo Reefs Pinamalayan Theme Park Mangyan Shooting Range Rainbow Junction Parola at Pinamalayan Bay Magdalena Beach Resort Bulaklak Garden Resort Ranzo Stairway to Heaven Pinamalayan Airport Banilad Archaeological Site Tau Buhid Mangyan Settlement Ranzo Lighthouse |
| Gloria | Walang Langit Waterfalls Bulaklakan Tree Farm Mount Manguyang Camping Site |
| Bansud | Rosacara River Waterfalls (4 waterfalls) Bansud Museum Mangyan Settlements Bansud Municipal Park and Plaza |
| Bongabong | Caves (3 caves) Waterfalls (7 waterfalls) 17 th Century Kuta Shrine Ancestral House of Vicente Ilagan Batangan Mangyan Community Botanical Park |





| MUNICIPALITY | TOURIST SITES AND DESTINATIONS |
|--------------|--|
| Roxas | San Rafael Cave Tauga Diit River Happy Valley Mountain View Fish Sanctuary San Vicente Eco-Forest |
| Mansalay | Matang Pugita and Lamak River/Waterfalls Palaypay Burial Ground and Palaypay Diit River Lanao Sigong River Mansalay Bay Bugtong Bato Point Mangyan Virgin Cave Acacia Park and Mountain View Palace Buktot and Kasabangan White Sand Beaches Bait Mangyan Village in Brgy. Panaytayan Burial Cave in Balanga Mangyan Culture (settlement) Municipal Museum Wasig Airport Turtle Sanctuary Mansalay Eco Park Mansalay Municipal Port |
| Bulalacao | White sand islets and reefs (7 islands, 5 islets) Cabugao Waterfalls Bagong Sikat Falls Panangiran Peak Buyayao Peak Mt. Namalayan Colon Hill Lubok Sunken 17 th Century Sunken Church |

Source: Provincial Tourism, Investment and Enterprise Development Office, 2015



4. Festivities by City/Municipality

| Municipality | Foundation Day | Date of Fiesta | Festival | |
|---------------|----------------|----------------|------------------------|-------------------|
| | | | Name | Date |
| Baco | January 25 | March 19 | Banana | January 25 |
| Bansud | July 4 | January 17-19 | Basudani | January 19 |
| Bongabong | December 7 | March 19 | Sulyog | March 19 |
| Bulalacao | February 15 | June 29 | Biniray | June 29 |
| Calapan City | March 21 | January 1 | Harvest/Kalap Festival | March 21 |
| Gloria | October 1 | February 14-15 | Kawayanan | Sept. 29 – Oct. 1 |
| Mansalay | July 24 | November 25 | Mansalenses Palakaya | July 24 |
| Naujan | January 4 | September 10 | DaBaLiSiHit | September 10 |
| | | | Bibingka | May 24 |
| Pinamalayan | April 25 | April 25 | Bahaghari | April 25 |
| | | | Bahaghari Centurion | Every Holy Week |
| Pola | January 1 | June 24 | Sab'uyan & Bankathon | June 24 |
| | | | Pola Moriones | April |
| Puerto Galera | March 18 | December 8 | Kaaldawan Iraya | October 12 |
| | | | De Galera | May 10-12 |
| Roxas | November 15 | January 25 | Sipag | July 28 |
| San Teodoro | February 16 | December 8 | Adyawan Festival | December 8 |
| Socorro | July 26-27 | July 26-27 | Pakapya Agtike | July 26 |
| Victoria | September 18 | October 14-15 | Kapakyanan | September 18 |

Source: Provincial Tourism, Investment and Enterprise Development Office, 2015

C. COMMERCE AND INDUSTRY

1. Business Establishments by Type, Investments & Employment

| Sectoral Classification | No. of Applications | Investments (PhP) | Employment |
|-------------------------|---------------------|-------------------|--------------|
| Agriculture | 272 | 42.356 | 579 |
| Manufacturing | 65 | 242.000 | 185 |
| Services | 526 | 133.961 | 1,215 |
| Tourism | 43 | 42.858 | 117 |
| Trading | 554 | 58.677 | 1,188 |
| Total | 1,460 | 519.852 | 3,284 |

Source: Department of Trade and Industry, 2015



2. Automated Teller Machines (Calapan City):

- | | |
|---|---|
| <ul style="list-style-type: none"> a. Land Bank of the Philippines (LBP) b. Development Bank of the Philippines (DBP) c. Philippine National Bank (PNB) d. United Coconut Planters Bank (UCPB) e. First Allied Bank f. MetroBank (2) g. Bank of the Philippine Islands (BPI) -2 h. China Banking Corp. i. Banco de Oro (BDO) - 2 j. Bank of Commerce k. Rizal Commercial Banking Corporation (RCBC) | <ul style="list-style-type: none"> l. Max Bank m. East West Banking Corp. n. Security Bank o. May Bank p. CARD Bank q. First Consolidated Bank r. Robinson's Bank Corp. s. City Savings t. PS Bank u. Agri Business Rural Bank v. Asia United Bank w. Makati Bank |
|---|---|

3. Number of Banks by City/Municipality

| Municipality | Banks |
|---------------|-----------|
| Baco | 1 |
| Bansud | 2 |
| Bongabong | 3 |
| Bulalacao | - |
| Calapan City | 37 |
| Gloria | 4 |
| Mansalay | 1 |
| Naujan | 3 |
| Pinamalayan | 12 |
| Pola | 1 |
| Puerto Galera | 3 |
| Roxas | 5 |
| San Teodoro | 1 |
| Socorro | 3 |
| Victoria | 2 |
| TOTAL | 78 |





INFRASTRUCTURE AND UTILITIES

A. TRANSPORTATION

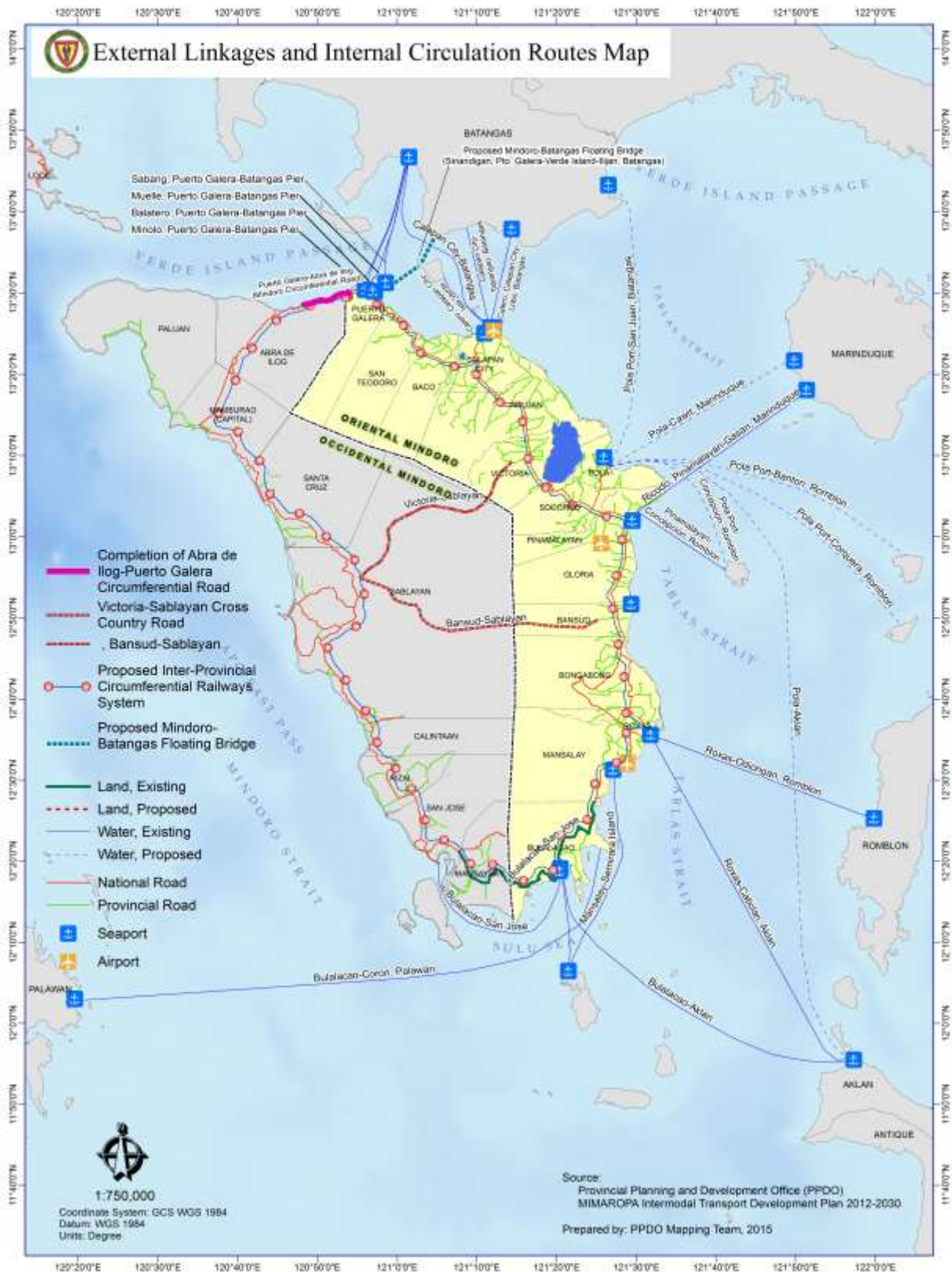
| Facilities | Number |
|--|--------------|
| 1. Roads (as of 2014) | |
| a. National Roads (KM) | |
| ▪ Concrete – 257.487kms; Gravel – 0.615kms; Asphalt – 69.299kms | 328.097 |
| b. Provincial Roads (KM) | |
| ▪ Concrete – 384.4380kms; Gravel – 498.3961kms; Earth – 14.431km; Asphalt – 0.020km | 897.285 |
| 2. Bridges (number) | |
| a. National | 94 |
| b. Provincial | 101 |
| 3. Land Transportation | |
| a. Registered vehicles | 30,485 |
| b. License issued | 31,757 |
| c. Total collection from fines on law enforcement (PhP) | 2,537,290.00 |
| 4. Airports | |
| a. Existing airports (Calapan, Pinamalayan, Wasig) | 3 |
| b. Aircraft movements | |
| ▪ Private/commercial aircraft landed (Calapan) | 40 |
| ▪ Government including military craft | 2 |
| 5. Sea Ports | |
| a. National ports (Calapan, Roxas) | 2 |
| b. Municipal ports(2 in Puerto Galera; 1 each in Calapan, Pinamalayan, Mansalay, Bulalacao, Bansud and Pola) | 8 |
| 6. RO-RO vessels | 39 |
| 7. Fast craft | 6 |
| 8. Shipping company | 8 |
| 9. Ship calls (Calapan and Roxas) | 20,302 |
| 10. Passengers (Calapan and Roxas) | |
| a. Disembarked | 2,956,087 |
| b. Embarked | 2,731,638 |
| 11. Cargo (MT)-Calapan and Roxas | |
| a. Inbound | 26,321 |
| b. Outbound | 16,180 |
| 12. Rolling Cargo (in units) | 476,005 |
| a. Inbound | 238,741 |
| b. Outbound | 237,264 |

Source: Land Transportation Office, Philippine Ports Authority, Civil Aviation Authority, Provincial Engineering Office, Department of Public Works and Highways, 2015





External Linkages and Internal Circulation Routes Map



Source: Provincial Planning and Development Office, 2015





B. COMMUNICATION

1. Newspapers (Coverage-Or. Mindoro and Southern Tagalog)

- a. Island Sentinel
- b. Island Profiles
- c. Island Observer
- d. Halcon Star
- e. Mindoro Bulletin
- f. Mindoro Weekly Reporter
- g. People’s Tribune

2. Post Office **12**

3. Telegraphic Services

- a. Telegraphic transfer office 4
- b. Office handling social telegraph 10

4. Wireless Service Providers, 2015

| Municipality | No. of cellsites | | |
|---------------|----------------------|---------------|-----------------------|
| | Smart Communications | Globe Telecom | Digitel (SunCellular) |
| Baco | 1 | | 1 |
| Bansud | 2 | | |
| Bongabong | 1 | | |
| Bulalacao | 1 | | |
| Calapan City | 9 | 8 | 1 |
| Gloria | 2 | 2 | |
| Mansalay | 1 | | |
| Naujan | 5 | 1 | 1 |
| Pinamalayan | 4 | | 1 |
| Pola | 1 | | |
| Puerto Galera | 3 | 2 | |
| Roxas | 2 | 1 | |
| San Teodoro | 1 | | |
| Socorro | 2 | | |
| Victoria | 2 | 2 | 1 |
| TOTAL | 37 | 16 | 5 |





5. Telephone Companies (landline)

- a. Calapan Telephone System, Inc. - *Calapan City, Puerto Galera, Victoria, Socorro, Pinamalayan, Bongabong, Roxas, Gloria, Bansud*
- b. Globe Telecom - *Calapan City, Puerto Galera, Naujan, Victoria, Socorro, Pinamalayan, Bongabong, Roxas*
- c. RMC Telecommunication Company - *Naujan, Oriental Mindoro*

6. Internet Service Providers

- a. Calapan Telephone System, Inc. (CATSI) - *Calapan City, Pinamalayan, Bongabong*
- b. Dalcan Technologies - *Calapan City, Puerto Galera*
- c. Smart Communications - *Provincewide*
- d. Globe Telecom - *Calapan City, Puerto Galera, Naujan, Victoria, Pinamalayan*
- e. Tamaraw Vision Net, Inc. - *Calapan City*

7. Radio Stations and Cable TV Networks by Municipality

| Municipality | FM Radio Station | Cable Television Network | City/ Municipality | FM Radio Station | Cable Television Network |
|--------------------------------|------------------|--------------------------|--------------------------------|------------------|--------------------------|
| 1st District | | | 2nd District | | |
| Baco | | 1 | Pinamalayan | 1 | 2 |
| San Teodoro | | 1 | Gloria | | 1 |
| Puerto Galera | | 1 | Bansud | | 1 |
| Calapan City * | 4 | 2 | Bongabong | 1 | 1 |
| Naujan | 1 | 1 | Roxas | 1 | 1 |
| Victoria | 1 | 1 | Mansalay | | 1 |
| Socorro | | 2 | Bulalacao | | 1 |
| Pola | | 1 | | | |
| Oriental Mindoro | 6 | 10 | Total | 3 | 8 |

** with 1 AM Radio Station - DWOM 9.36kHz*





8. Ratio of postal employees to total population

| Municipality | Projected No. of HH 2015 | No. of Postal Employees | Ratio |
|--------------------------------|--------------------------|-------------------------|----------------|
| 1st District | | | |
| Baco | 37,788 | 2* | 1:18,894 |
| Calapan City | 134,430 | 12 | 1:11,202 |
| Naujan | 100,305 | 1 | 1:100305 |
| Pola | 33,515 | | |
| Puerto Galera | 39,605 | 2 | 1:19,802 |
| San Teodoro | 16,915 | 1 | 1:16,915 |
| Socorro | 38,946 | 1 | 1:38,946 |
| Victoria | 51,277 | 1 | 1:51,277 |
| 2nd District | | | |
| Bansud | 40,118 | 1 | 1:40,118 |
| Bongabong | 70,416 | 1 | 1:70,416 |
| Bulalacao | 37,267 | | |
| Gloria | 43,785 | 1* | 1:43,785 |
| Mansalay | 59,505 | 1 | 1:59,505 |
| Pinamalayan | 86,368 | 4 | 1:21,592 |
| Roxas | 54,800 | 3 | 1:18,266 |
| Oriental Mindoro | 843,402 | 31 | 1:27206 |

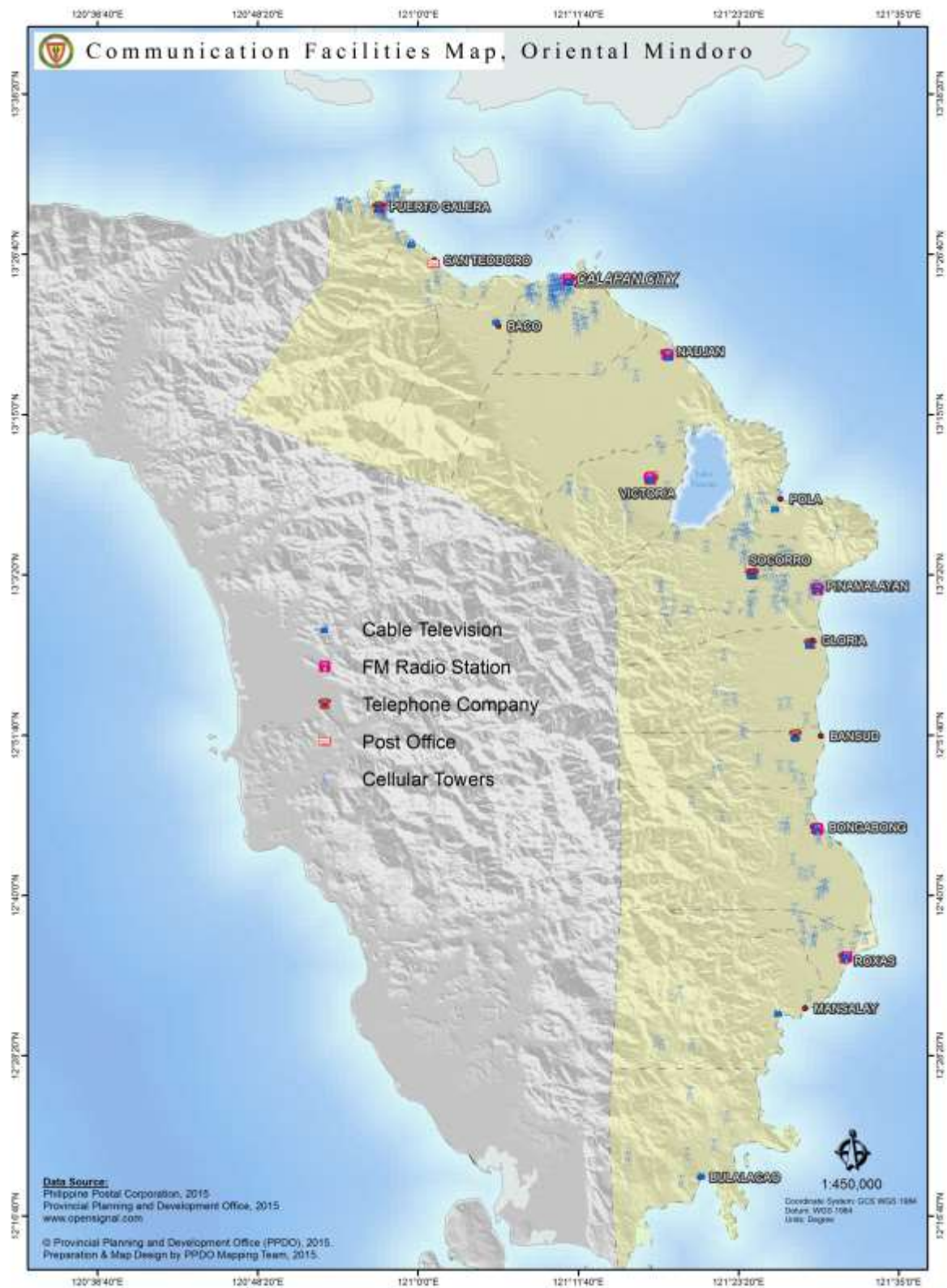
Source: Philippine Postal Corporation, 2015

*Municipal paid employee





Communication Facilities Map, Oriental Mindoro



Source: Provincial Planning and Development Office, 2015





C. WATER

A. Level III Water System by City/Municipality

| City/ Municipality | Water Service Provider | Type of Water Facility |
|--------------------|--|---|
| Calapan City | Calapan Waterworks System and Dev't Corporation | Pump |
| Baco | Pag-asa Water System Bangkatan Water System Dulangan III Water System San Ignacio Water System Barangay Water Water System | Gravity-fed Gravity-fed Gravity-fed Gravity-fed Gravity-fed |
| Bongabong | Bongabong Municipal Waterworks System Formon Water System Poblacion Water System Labasan Water System Carmundo Water System Hagan Water System Libertad Water System Malitbog Water System | Pumped Pumped Pumped Gravity-fed Pumped Pumped Pumped Pumped |
| San Teodoro | San Teodoro Water District Bigaan Water System Calsapa Water System Caagutayan Water System Calangatan Water System Tacligan Water System | Gravity-fed Pumped Pumped Pumped Pumped Pumped |
| Gloria | Tambong Water System Malamig Water System | Pumped Pumped |
| Mansalay | Mansalay Waterworks System | Pumped |
| Naujan | Naujan Water District Dao Waterworks Association Melgar A Waterworks Association Melgar B Waterworks Poblacion I Water System Apitong Water System Barcenaga Water System Sampaguita Water System Pagkakaisa Water System So. Centro, Montelago Water System So. Balangibang, Montelago Water System | Pumped Pumped Pumped/Gravity-fed Pumped/Gravity-fed Gravity-fed Pumped Pumped Pumped Pumped Gravity-fed Gravity-fed |
| Pinamalayan | Pinamalayan Water District | Pumped |



B. Population by Type of Water Facility and Urbanity

| Type of Water Facility | Total | Urban | Rural |
|---|----------------|---------------|----------------|
| Community Water System - Owned | 84,680 | 20,486 | 64,194 |
| Community Water System – Shared | 96,117 | 10,476 | 85,641 |
| Deep well – owned | 57,240 | 10,499 | 46,741 |
| Deep well – shared | 120,095 | 17,898 | 102,197 |
| Artesian well – owned | 52,150 | 5,560 | 46,590 |
| Artesian well – shared | 86,165 | 7,057 | 79,108 |
| Dug/shallow well – owned | 18,951 | 525 | 18,426 |
| Dug /shallow well – shared | 32,196 | 1,143 | 31,053 |
| River, stream, lake, spring bodies of water | 61,264 | 2,007 | 59,257 |
| Bottled Water | 4,792 | 1,883 | 2,909 |
| Tanker Truck/Peddler | 59,111 | 21,620 | 37,491 |
| Other | 3,433 | 356 | 3,077 |
| Total | 676,194 | 99,510 | 576,684 |

Source: Community Based Monitoring System Survey, 2008

C. Potential Water Sources

- Surface Waters (rivers, streams, lakes) are available in the main rivers of Oriental Mindoro and in Naujan Lake.
- Groundwater

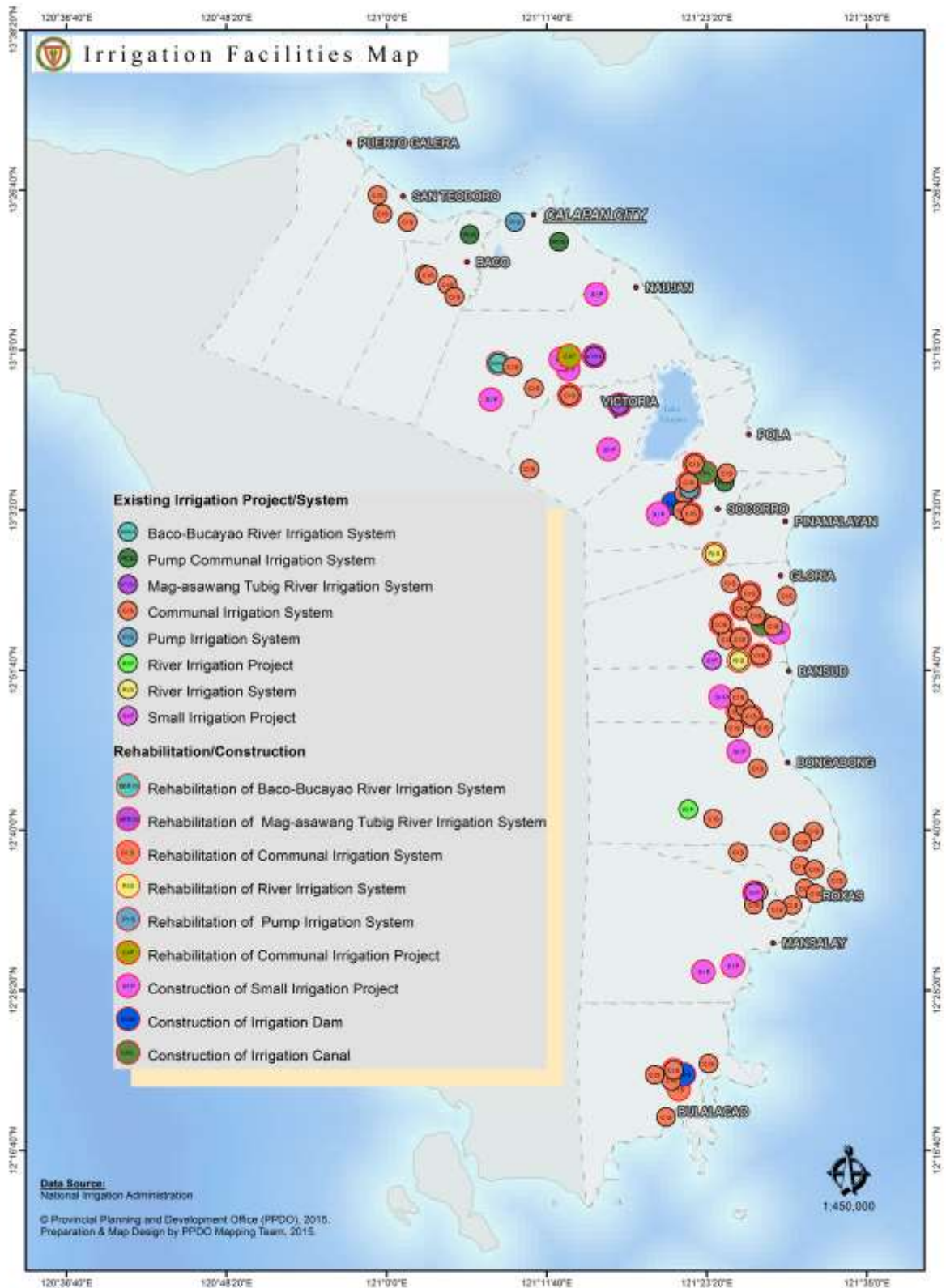
D. Major Watersheds, Oriental Mindoro: 2015

| Name of Watershed | Location | Classification | Area (sq km) | Remarks |
|------------------------------|------------------------------------|--------------------|-----------------|---|
| Bongabong Watershed | Bongabong, Bansud, Mansalay, Roxas | WMUL/Rehab Project | 1,099.86 | |
| Mayabig Community Watershed | Bayanan, Baco | Community | 6.10 | Proposed for Proclamation |
| Sabang Community Watershed | Sabang, Pinamalayan | Community | 11.74 | Proposed for Proclamation |
| Lancawan Community Watershed | Conrazon, Bansud | Community | 9.37 | Proposed for Proclamation |
| Baco-Bucayao Watershed | Baco, San Teodoro | Proposed | 554.00 | Proposed for watershed rehabilitation project |
| Mag-Asawang Tubig Watershed | Victoria | Proposed | 125.33 | Proposed for watershed rehabilitation project |
| Pola Watershed | Socorro | Proposed | 125.73 | Proposed for watershed rehabilitation project |
| Total Area (sq. km) | | | 1,932.13 | |

Source: Department of Environment and Natural Resources – Environmental Management Bureau



Irrigation Facilities Map

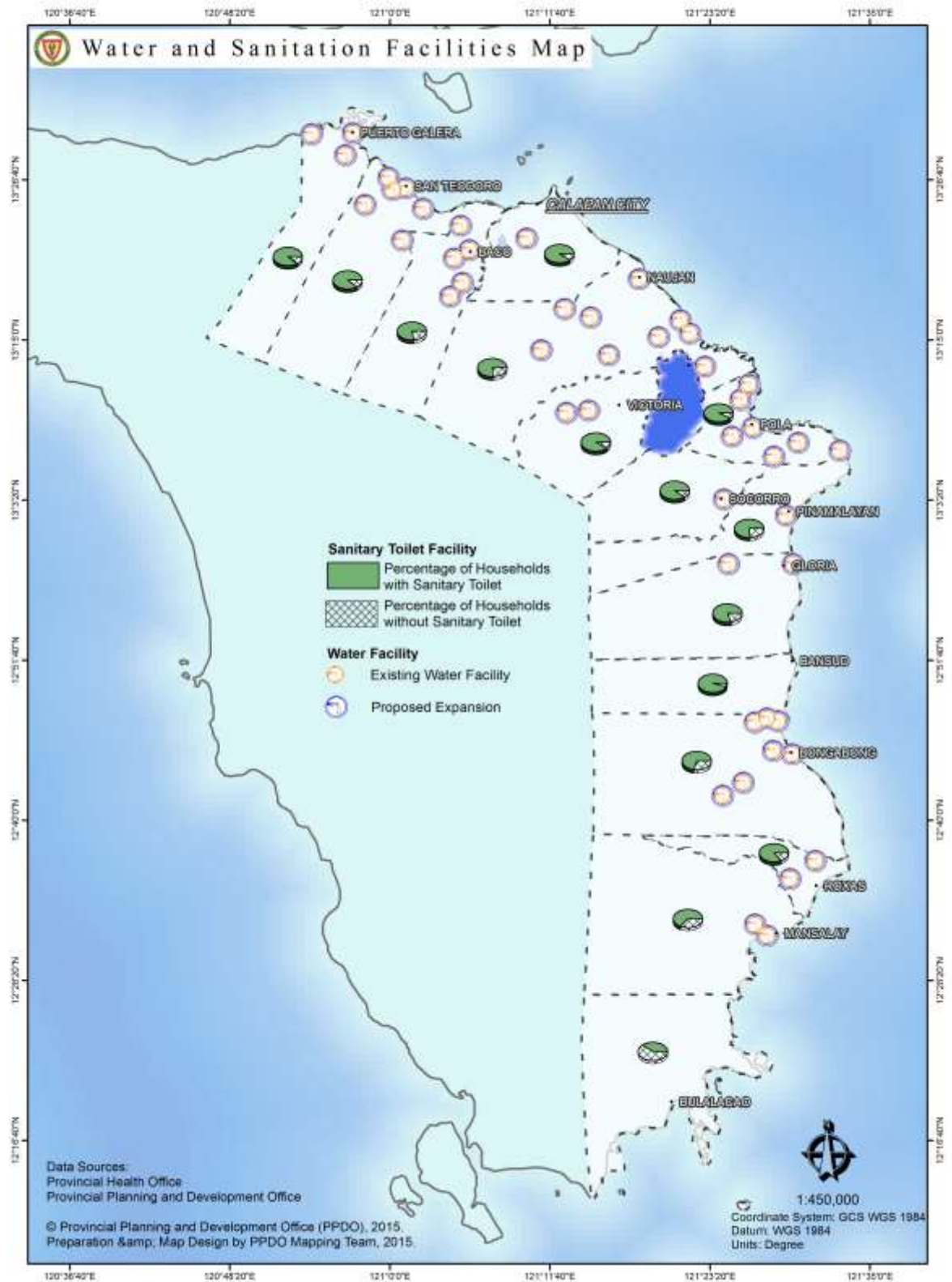


Source: Provincial Planning and Development Office, 2015





Water and Sanitation Facilities Map



Source: Provincial Planning and Development Office, 2015





D. POWER

1. Status of Electrification

| Municipality | Barangays | | | House Connections | Members Approved |
|--------------------------------|------------|------------|------------|-------------------|------------------|
| | Covered | Energized | % | | |
| 1st District | | | | | |
| Baco | 27 | 27 | 100 | 7,548 | 5,766 |
| Calapan City | 62 | 62 | 100 | 42,475 | 28,103 |
| Naujan | 70 | 70 | 100 | 22,988 | 19,239 |
| Pola | 23 | 23 | 100 | 7,266 | 7,038 |
| Puerto Galera | 13 | 13 | 100 | 9,606 | 5,109 |
| San Teodoro | 8 | 8 | 100 | 3,827 | 2,498 |
| Socorro | 26 | 26 | 100 | 9,008 | 7,078 |
| Victoria | 32 | 32 | 100 | 11,912 | 9,069 |
| 2nd District | | | | | |
| Bansud | 13 | 13 | 100 | 8,106 | 6,745 |
| Bongabong | 36 | 36 | 100 | 14,077 | 11,152 |
| Bulalacao | 15 | 15 | 100 | 4,408 | 3,945 |
| Gloria | 27 | 27 | 100 | 9,208 | 6,999 |
| Mansalay | 17 | 17 | 100 | 6,451 | 5,965 |
| Pinamalayan | 37 | 37 | 100 | 19,646 | 13,947 |
| Roxas | 20 | 20 | 100 | 10,899 | 8,809 |
| Oriental Mindoro | 426 | 426 | 100 | 187,425 | 141,462 |

Source: National Power Corporation, 2015

2. Total Dependable Capacity - 48.7 MW
3. Maximum Power Demand - 45.2 MW





4. Present Sources of Power

| Power Plant | Installed Capacity (MW) | Dependable Capacity (MW) | Location |
|-------------------------------------|-------------------------|--------------------------|---------------------------|
| 1. Power One Corp. | 14.0 | 9.0 | Sta. Isabel, Calapan City |
| 2. Global Business Holdings, Inc. | 7.5 | 5.0 | Papandayan, Pinamalayan |
| 3. Ormin Power, Inc. | 8.2 | 6.4 | Sta. Isabel, Calapan City |
| 4. Mindoro Grid Corp. (Bansud) | 6.6 | 5.0 | Conrazon, Bansud |
| 5. Mindoro Grid Corp. (Bongabong) | 6.6 | 5.0 | Labasan, Bongabong |
| 6. Linao Cawayan Mini Hydro (Lower) | 2.1 | 1.2 | Calangatan, San Teodoro |
| 7. Linao Cawayan Mini Hydro (Upper) | 3.0 | 2.1 | Caagutayan, San Teodoro |
| 8. DMCI Power Corp. | 15.0 | 15.0 | Sta. Isabel, Calapan City |

E. Power Substations

| Power Substations [ORMECO] | MVA RATING | Ownership |
|----------------------------|------------|---------------------------------------|
| Calapan City | 30 | National Power Corporation |
| Pinamalayan | 5 | Oriental Mindoro Electric Cooperative |
| Naujan | 5 | Oriental Mindoro Electric Cooperative |
| Roxas | 5 | Oriental Mindoro Electric Cooperative |
| Socorro-Pola | 5 | Oriental Mindoro Electric Cooperative |
| Puerto Galera | 10 | Oriental Mindoro Electric Cooperative |
| Bongabong | 5 | Oriental Mindoro Electric Cooperative |
| Victoria | 2.5 | Oriental Mindoro Electric Cooperative |

6. Breakdown of actual connections

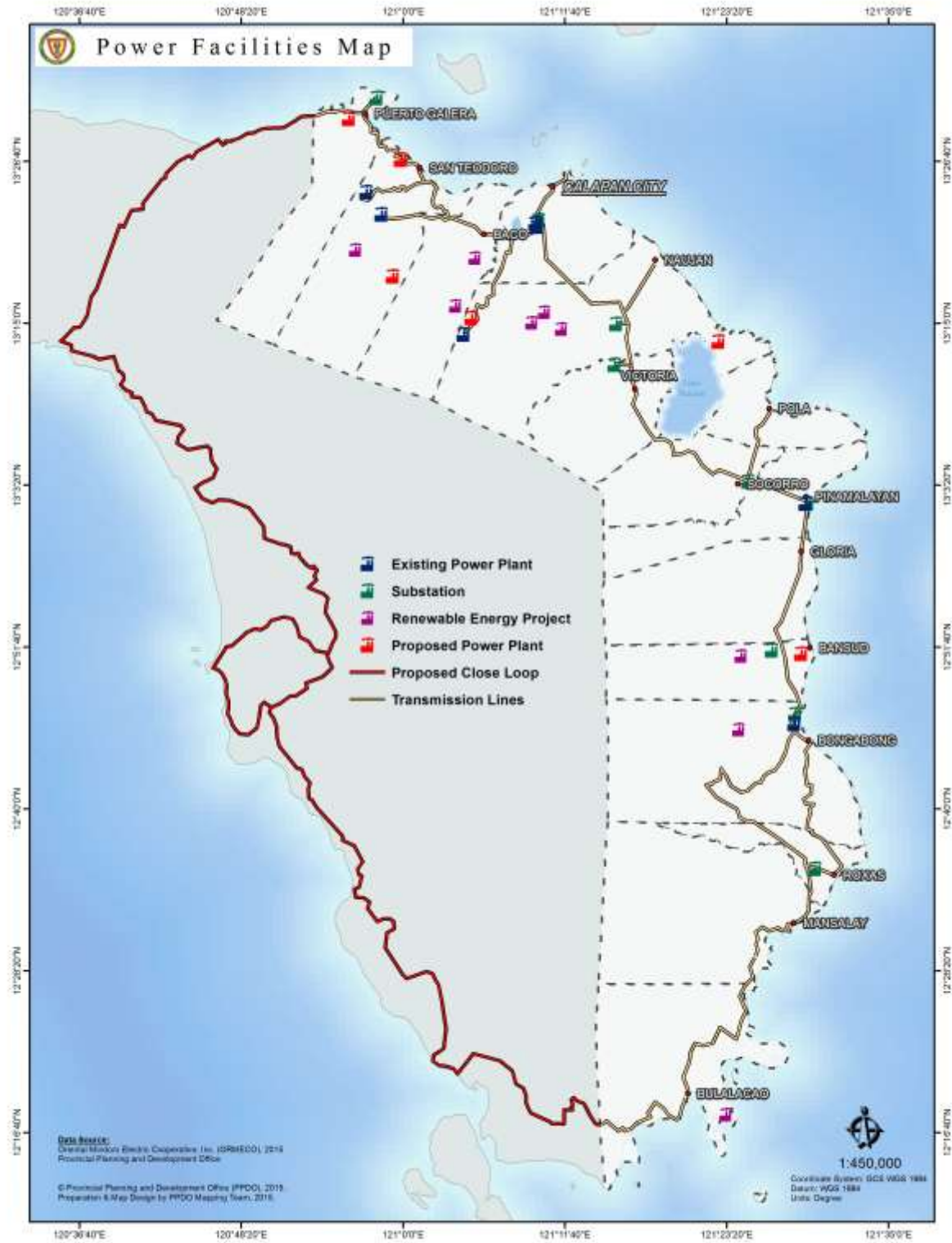
| | | |
|---------------------|---|----------------|
| a. Commercial | - | 9,365 |
| b. Residential | - | 133,845 |
| c. Industrial | - | 139 |
| d. Public Buildings | - | 3,327 |
| e. Street Lights | - | 652 |
| f. BAPA | - | 3,912 |
| TOTAL | | 151,240 |

Source: Oriental Mindoro Electric Cooperative, Inc., 2015





Power Facilities Map



Source: Provincial Planning and Development Office, 2015



Social Development Profile

A. LABOR AND EMPLOYMENT

1. Comparative Labor Force Participation Rates, Employment and Unemployment Rates, MIMAROPA

| Labor and Employment | 2013 | 2014 | Oct 2015 |
|--------------------------------|------|------|----------|
| Labor Force Participation Rate | 66.3 | 67.2 | 65.5 |
| Employment Rate | 95.9 | 95.4 | 97.4 |
| Unemployment Rate | 4.1 | 4.6 | 2.6 |
| Underemployment Rate | 23.4 | 20.4 | 18.7 |

2. Comparative Employment Status of Household Population 15 years old and over, MIMAROPA (in thousands)

| Labor and Employment | 2013 | 2014 | Oct 2015 |
|--------------------------|-------|-------|----------|
| Total in the labor force | 1,294 | 1,342 | 2,062 |
| Total Employed | 1,241 | 1,280 | 2,008 |
| Total Unemployed | 53 | 62 | 54 |

Note: Details may not add up to total due to rounding

Source: <http://bles.dole.gov.ph/PUBLICATIONS>

B. POVERTY AND INCOME

1. Annual per Capita Poverty Threshold, Poverty Incidence, Magnitude of Poor Families and Population by Province, MIMAROPA

| Region/ Province | Annual Per Capita Poverty Threshold (in Pesos) | | | Poverty Incidence among Families (%) | | | Magnitude of Poor Families Estimate | | |
|-------------------------|--|--------|--------|--------------------------------------|------|------|-------------------------------------|-----------|-----------|
| | 2006 | 2009 | 2012 | 2006 | 2009 | 2012 | 2006 | 2009 | 2012 |
| PHILIPPINES | 13,357 | 16,871 | 18,935 | 21 | 20.5 | 19.7 | 3,809,283 | 4,036,915 | 4,214,921 |
| MIMAROPA | 12,645 | 15,613 | 17,292 | 32.4 | 27.2 | 23.6 | 176,282 | 160,226 | 150,486 |
| Marinduque | 12,909 | 15,678 | 17,180 | 31.9 | 27.4 | 23.9 | 15,481 | 13,971 | 12,743 |
| Occidental Mindoro | 12,725 | 15,937 | 17,412 | 33.5 | 25 | 29.8 | 30,084 | 24,203 | 31,070 |
| Oriental Mindoro | 13,396 | 16,710 | 17,415 | 35.7 | 28.8 | 21.5 | 56,043 | 48,741 | 39,272 |
| Palawan | 11,521 | 14,418 | 16,696 | 28.2 | 25.3 | 20.5 | 53,193 | 53,131 | 47,730 |
| Romblon | 12,811 | 15,547 | 18,464 | 36.3 | 32.6 | 30.4 | 21,481 | 20,181 | 19,671 |

Source: Philippine Statistics Authority, 2013

2. Annual per Capita Food Threshold, Subsistence Incidence, Magnitude of Poor Families and Population by Province, MIMAROPA – 2012

| Region/Province | Annual Per Capita Food Threshold (PhP) | Subsistence Incidence (%) | |
|-------------------------|--|---------------------------|-------------|
| | | Families | Population |
| MIMAROPA | 12,082 | 16.8 | 15.8 |
| Occidental Mindoro* | 12,103 | 31.9 | 32.2 |
| Oriental Mindoro | 12,192 | 26.1 | 24.0 |
| Marinduque | 11,997 | 31.3 | 29.1 |
| Romblon | 12,893 | 27.6 | 27.8 |
| Palawan* | 11,697 | 41.6 | 36.2 |

Source: Philippine Statistics Authority, 2012

*Coefficient of Variation (CV) of 2012 poverty incidence among families is greater than 20%

3. Average Family Income , Expenditures and Savings of Families, MIMAROPA: 2012

| | | |
|--------------|---|------------|
| Income | - | PhP177,000 |
| Expenditures | - | 134,000 |
| Savings | - | 43,000 |

Source: Philippine Statistics Authority, 2012 Family Income and Expenditure Survey

4. The 13+1 Dimensions of Poverty, Oriental Mindoro, 2008

| Indicator | Households | | Population | | | | | |
|---|------------|------------|------------|--------|--------|------------|------|--------|
| | Magnitude | Proportion | Magnitude | | | Proportion | | |
| | | | Total | Male | Female | Total | Male | Female |
| DEMOGRAPHY | | | | | | | | |
| Population | 153999 | | 675838 | 343995 | 331843 | 100 | 50.9 | 49.1 |
| Average household size | 4 | | | | | | | |
| Children 0-5 years old | 68887 | 44.7 | 102321 | 52580 | 49741 | 15.1 | 15.3 | 15.0 |
| Children 6-12 years old | 73955 | 48 | 127242 | 65217 | 62025 | 18.8 | 19.0 | 18.7 |
| Members 13-16 years old | 50518 | 32.8 | 68955 | 35821 | 33134 | 10.2 | 10.4 | 10.0 |
| Members 6-16 years old | 90952 | 59.1 | 196197 | 101038 | 95159 | 29.0 | 29.4 | 28.7 |
| Members 10 years old and above | 153885 | 99.9 | 501153 | 254460 | 246693 | 74.2 | 74.0 | 74.3 |
| Members of the labor force | 136651 | 88.7 | 204053 | 142060 | 61993 | 30.2 | 41.3 | 18.7 |
| HEALTH AND NUTRITION | | | | | | | | |
| children 0-5 year old who died | 534 | 0.8 | 559 | 294 | 265 | 0.5 | 0.6 | 0.5 |
| women who died due to pregnancy related-causes | 38 | 0.2 | 39 | | | 0.2 | | |
| malnourished children 0-5 year old | 5435 | 7.9 | 7032 | 3591 | 3441 | 6.9 | 6.8 | 6.9 |
| HOUSING | | | | | | | | |
| households living in makeshift housing | 6504 | 4.2 | 28470 | 14882 | 13588 | 4.2 | 4.3 | 4.1 |
| households who are squatters | 4577 | 3 | 20176 | 10403 | 9773 | 3.0 | 3.0 | 2.9 |
| WATER AND SANITATION | | | | | | | | |
| households without access to safe water | 39956 | 25.9 | 175117 | 89298 | 85819 | 25.9 | 26.0 | 25.9 |
| households without access to sanitary toilet facility | 35181 | 22.8 | 155752 | 81235 | 74517 | 23.0 | 23.6 | 22.5 |
| BASIC EDUCATION | | | | | | | | |
| children 6-12 years old not attending elementary | 25001 | 33.8 | 29762 | 15727 | 14035 | 29.5 | 8.0 | 14.7 |
| children 13-16 years old not attending high school | 22411 | 44.4 | 26844 | 15766 | 11078 | 38.9 | 44.0 | 33.4 |
| children 6-16 years old not attending school | 21416 | 23.5 | 29287 | 17127 | 12160 | 14.9 | 17.0 | 12.8 |
| INCOME AND LIVELIHOOD | | | | | | | | |
| households with income below poverty threshold | 95163 | 61.8 | 460250 | 237061 | 223189 | 68.1 | 68.9 | 67.3 |
| households with income below food threshold | 71700 | 46.6 | 358982 | 185356 | 173626 | 53.1 | 53.9 | 52.3 |
| households experienced food shortage | 13321 | 8.7 | 64750 | 33638 | 31112 | 9.6 | 9.8 | 9.4 |
| Unemployed members of the labor force | 3326 | 2.4 | 3869 | 2289 | 1580 | 1.9 | 1.6 | 2.5 |
| PEACE AND ORDER | | | | | | | | |
| Victims of crime | 2149 | 1.4 | 4507 | 2583 | 1924 | 0.7 | 0.8 | 0.6 |

Source: CBMS Survey, 2008

5. Municipal level small area estimates of poverty incidence, 2009 and 2012

| Municipality | Poverty Incidence | |
|--------------------------------|-------------------|------|
| | 2009 | 2012 |
| 1st District | | |
| Baco | 44.5 | 22.8 |
| Calapan City | 23.0 | 7.1 |
| Naujan | 38.4 | 20.5 |
| Pola | 37.9 | 29.2 |
| Puerto Galera | 23.9 | 11.0 |
| San Teodoro | 33.6 | 14.8 |
| Socorro | 36.8 | 15.4 |
| Victoria | 35.2 | 18.0 |
| 2nd District | | |
| Bansud | 39.0 | 19.9 |
| Bongabong | 35.8 | 25.1 |
| Bulalacao | 51.5 | 40.0 |
| Gloria | 35.5 | 18.3 |
| Mansalay | 41.8 | 35.5 |
| Pinamalayan | 31.7 | 17.0 |
| Roxas | 29.7 | 21.1 |

Source: Philippine Statistics Authority–World Bank Estimation of Local Poverty in the Philippines

C. HEALTH

1. Number and Rate of Births, Total Deaths, Infant and Maternal Deaths

| INDICATORS | 2013 | | 2014 | | 2015 | |
|-----------------|--------|------|--------|------|--------|------|
| | No. | Rate | No. | Rate | No. | Rate |
| Births | 17,042 | 20.7 | 16,685 | 20.0 | 17,312 | 20.5 |
| Total Deaths | 2,892 | 3.5 | 2,696 | 3.2 | 3,063 | 3.6 |
| Infant Deaths | 121 | 7.1 | 99 | 5.9 | 77 | 4.4 |
| Maternal Deaths | 4 | 0.23 | 4 | 0.23 | 1 | 0.06 |

Source: Annual 2015 Field Health Service Information System

2. Access to Health Services

| INDICATORS | 2013 | 2014 | 2015 |
|---|-------|-------|-------|
| Proportion of births attended by skilled health personnel | | | |
| a. MD/PHN/Midwives | 78.92 | 80.00 | 84.48 |
| b. Hilot/Trained Birth Attendants | 19.97 | 18.00 | 14.97 |
| c. Others /Skilled Birth Attendant | 1.14 | 1.00 | 1.03 |

Source: Provincial Health Office, 2015



3. **Morbidity: Leading Causes, Number and Rate per 100,000 Population Five Year Average (2011-2014), 2015**

| CAUSES | 2015 | | 5 Yr. Average | |
|--|--------|-------|---------------|-------|
| | No. | Ratio | No. | Ratio |
| 1. Acute Upper Respiratory Infection | 28,216 | 3350 | 25,004 | 2969 |
| 2. Pneumonia | 3,905 | 464 | 2,804 | 333 |
| 3. Hypertension | 3,520 | 418 | 2,740 | 325 |
| 4. Urinary Tract Infection | 2,601 | 309 | 1,975 | 235 |
| 5. Wound All Forms | 2,418 | 287 | 1,648 | 196 |
| 6. Skin Disease | 2,091 | 248 | 1,265 | 150 |
| 7. Bronchitis | 1,546 | 184 | 1,625 | 193 |
| 8. Acute Gastroenteritis | 1,528 | 181 | 2,499 | 297 |
| 9. Chronic Obstructive Pulmonary Disease | 1,356 | 161 | 69 | 8 |
| 10. Pulmonary Tuberculosis | 1,089 | 129 | 1,774 | 211 |

Source: Provincial Health Office, 2015

4. **Infant Morbidity: Leading Causes, Number and Rate per 100,000 Population Five Year Average (2011-2014), 2015**

| CAUSES | 2015 | | 5 Yr. Average | |
|--------------------------------------|-------|--------|---------------|--------|
| | No. | Ratio | No. | Ratio |
| 1. Acute Upper Respiratory Infection | 2,656 | 315.37 | 2,510 | 298.03 |
| 2. Pneumonia | 312 | 37.05 | 556 | 66.02 |
| 3. Bronchitis | 228 | 27.07 | 461 | 54.74 |
| 4. Rhinitis | 221 | 26.24 | 158 | 18.76 |
| 5. Acute Viral Infection | 186 | 22.09 | 25 | 2.97 |
| 6. Skin Diseases | 185 | 21.97 | 140 | 16.62 |
| 7. Diarrhea | 181 | 21.49 | 272 | 32.30 |
| 8. Asthma | 55 | 6.53 | 100 | 11.87 |
| 9. Otitis Media | 21 | 2.49 | 11 | 1.31 |
| 10. Oral Thrush | 8 | 0.95 | 26 | 3.09 |

Source: Provincial Health Office, 2015 Annual Report



5. Mortality: Leading Causes, Number and Rate per 100,000 Population Five Year Average (2011-2014), 2015

| CAUSES | 2015 | | 5 Yr. Average | |
|--|------|-------|---------------|-------|
| | No. | Ratio | No. | Ratio |
| 1. Heart Disease | 530 | 63 | 667 | 79 |
| 2. Pneumonia | 293 | 35 | 257 | 31 |
| 3. Cancer All Forms | 261 | 31 | 220 | 26 |
| 4. Old Age | 209 | 25 | 215 | 26 |
| 5. Hypertension | 125 | 15 | 121 | 14 |
| 6. Septicemia | 120 | 14 | 15 | 2 |
| 7. Pulmonary Tuberculosis | 110 | 13 | 141 | 17 |
| 8. Renal Failure | 88 | 10 | 34 | 4 |
| 9. Chronic Obstructive Pulmonary Disease | 84 | 10 | 109 | 13 |
| 10. Diabetes | 83 | 10 | 66 | 8 |

Source: Provincial Health Office, 2015 Annual Report

5. Infant Mortality per 100,000 Population Five Year Average (2011-2014), 2015

| CAUSES | 2015 | | 5 Yr. Average | |
|-----------------------------------|------|------|---------------|------|
| | No. | Rate | No. | Rate |
| 1. Sepsis | 19 | 1.10 | 15 | 0.87 |
| 2. Pneumonia | 14 | 0.81 | 21 | 1.21 |
| 3. Heart Disease | 5 | 0.29 | 9 | 0.52 |
| 4. Prematurity | 4 | 0.23 | 20 | 1.16 |
| 5. Congenital Metabolic Disorder | 4 | 0.23 | 5 | 0.29 |
| 6. Cardio Respiratory Failure | 4 | 0.23 | 8 | 0.46 |
| 7. Acute Respiratory Disease Syn. | 3 | 0.17 | 3 | 0.17 |
| 8. Meningitis | 1 | 0.06 | 4 | 0.23 |
| 9. Aspiration | 1 | 0.06 | 3 | 0.17 |
| 10. Intestinal Obstruction | 1 | 0.06 | 1 | 0.06 |

Source: Provincial Health Office, 2015 Annual Report



Source: Provincial Planning and Development Office, 2015



7. Nutritional Status

| Age Group (months) | Number of Preschoolers Weighed by Nutritional Status and Sex | | | | | | | | | | | |
|------------------------|--|--------|--------|-------------|-------|-------|----------------------|-------|-------|------------|-------|-------|
| | Normal | | | Underweight | | | Severely Underweight | | | Overweight | | |
| | Boys | Girls | Total | Boys | Girls | Total | Boys | Girls | Total | Boys | Girls | Total |
| 0-5 | 4,007 | 4,006 | 8,013 | 109 | 79 | 188 | 65 | 39 | 104 | 63 | 45 | 108 |
| 6-11 | 4,198 | 4,165 | 8,363 | 170 | 132 | 302 | 65 | 35 | 100 | 22 | 43 | 65 |
| 12-23 | 8,363 | 7,999 | 16,362 | 578 | 459 | 1,037 | 186 | 143 | 329 | 77 | 66 | 143 |
| 24-35 | 8,612 | 8,196 | 16,808 | 766 | 666 | 1,432 | 209 | 208 | 417 | 82 | 70 | 152 |
| 36-47 | 8,688 | 8,094 | 16,782 | 772 | 747 | 1,519 | 177 | 201 | 378 | 111 | 89 | 200 |
| 48-59 | 9,084 | 8,409 | 17,493 | 796 | 778 | 1,574 | 201 | 182 | 383 | 102 | 79 | 181 |
| 60-71 | 8,055 | 7,781 | 15,836 | 760 | 717 | 1,477 | 196 | 157 | 353 | 104 | 61 | 165 |
| Total | 51,007 | 48,639 | 99,646 | 3,578 | 1,099 | 4,677 | 1,099 | 965 | 2,064 | 561 | 453 | 1,014 |
| Percentage Weighed (%) | | | 90.68 | | | 6.55 | | | 1.85 | | | 0.92 |

Source: Provincial Health Office, 2015 Annual Report

8. Health Facilities and Personnel

| Facilities | Number | Practitioners (government) | Number |
|-------------------------------------|--------|-------------------------------|--------|
| Private Hospitals | 12 | Physicians | 25 |
| Government Owned Hospitals | 6 | Nurses | 44 |
| Private Clinics | 46 | Nutritionist | 1 |
| Rural Health Units | 17 | Medical Technologist | 11 |
| City Health Office | 1 | Dental Aides | - |
| Barangay Health Station | 232 | Non-Technical | 34 |
| Malaria Control Service | 1 | Dentists | 15 |
| Schistosomiasis Control Team Office | 1 | Midwives | 138 |
| Botika sa Barangay | 356 | Engineers/Sanitary Inspectors | 21 |
| Botika ng Lalawigan | 1 | Active BHWs | 3,972 |
| Botika ng Bayan | 1 | | |

Source: Provincial Health Office, 2015 Annual Report

D. EDUCATION

1. Facilities (SY2015-2016)

| Facilities | Province | Calapan City |
|--|----------|--------------|
| Educational Districts | 18 | 3 |
| Public Pre- Elementary Schools | 418 | 49 |
| Public Elementary Schools | 421 | 49 |
| National High Schools | 82 | 9 |
| Private Pre-Elementary Schools | 39 | 14 |
| Private Elementary Schools | 47 | 16 |
| Private Secondary Schools | 37 | 6 |
| Government Owned Tertiary (Vocational/Technical and Colleges) | 2 | NA |

Source: Department of Education (Provincial & City Division)

2. Enrollment in Government and Private Schools By Level of Education (Provincial and City)

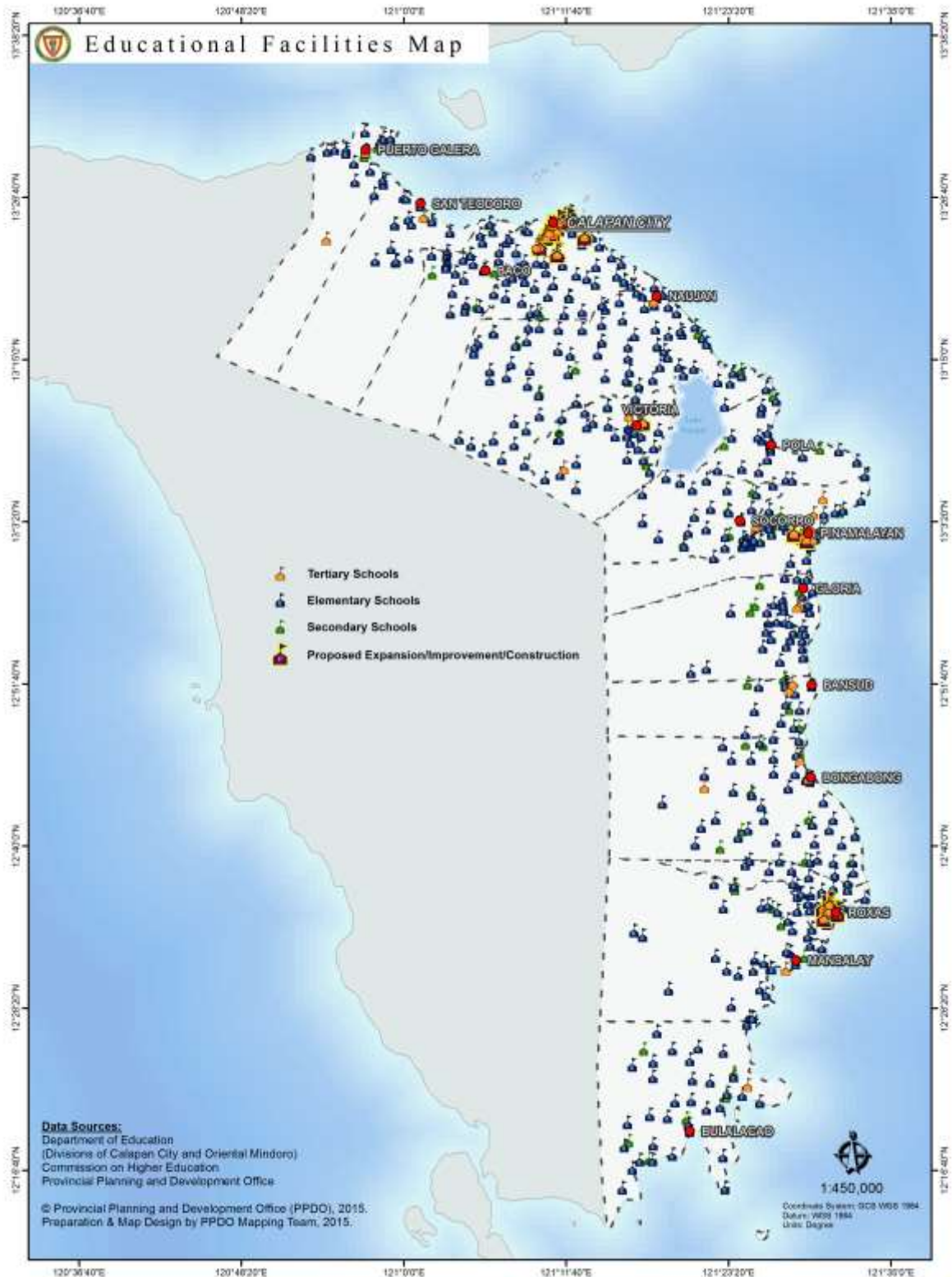
| Educational Level | 2015-2016 | |
|-------------------|-----------|---------|
| | Public | Private |
| Pre-Elementary | 18,932 | 1,288 |
| Elementary | 123,548 | 5,796 |
| Secondary | 55,136 | 14,988 |

Source: Department of Education (Provincial & City Division)

3. Performance Indicators in Public Elementary and Secondary Schools, 2014-2015

| Performance Indicators | Province | | Calapan City | |
|------------------------|---------------------------|--------------------------|---------------------------|--------------------------|
| | Public Elementary Schools | Public Secondary Schools | Public Elementary Schools | Public Secondary Schools |
| Net Enrolment Rate | 90.42 | 62.15 | 98.25 | 82.18 |
| Cohort Survival Rate | 86.46 | Data not yet available | 96.74 | 86.40 |
| School Leavers Rate | 5.31 | 8.11 | 1.15 | 4.71 |
| Graduation Rate | Data not yet available | Data not yet available | 100.34 | 98.86 |
| Completion Rate | 79.37 | 84.44 | 93.28 | 84.46 |

Source: Department of Education (Provincial & City Division)



Source: Provincial Planning and Development Office, 2015



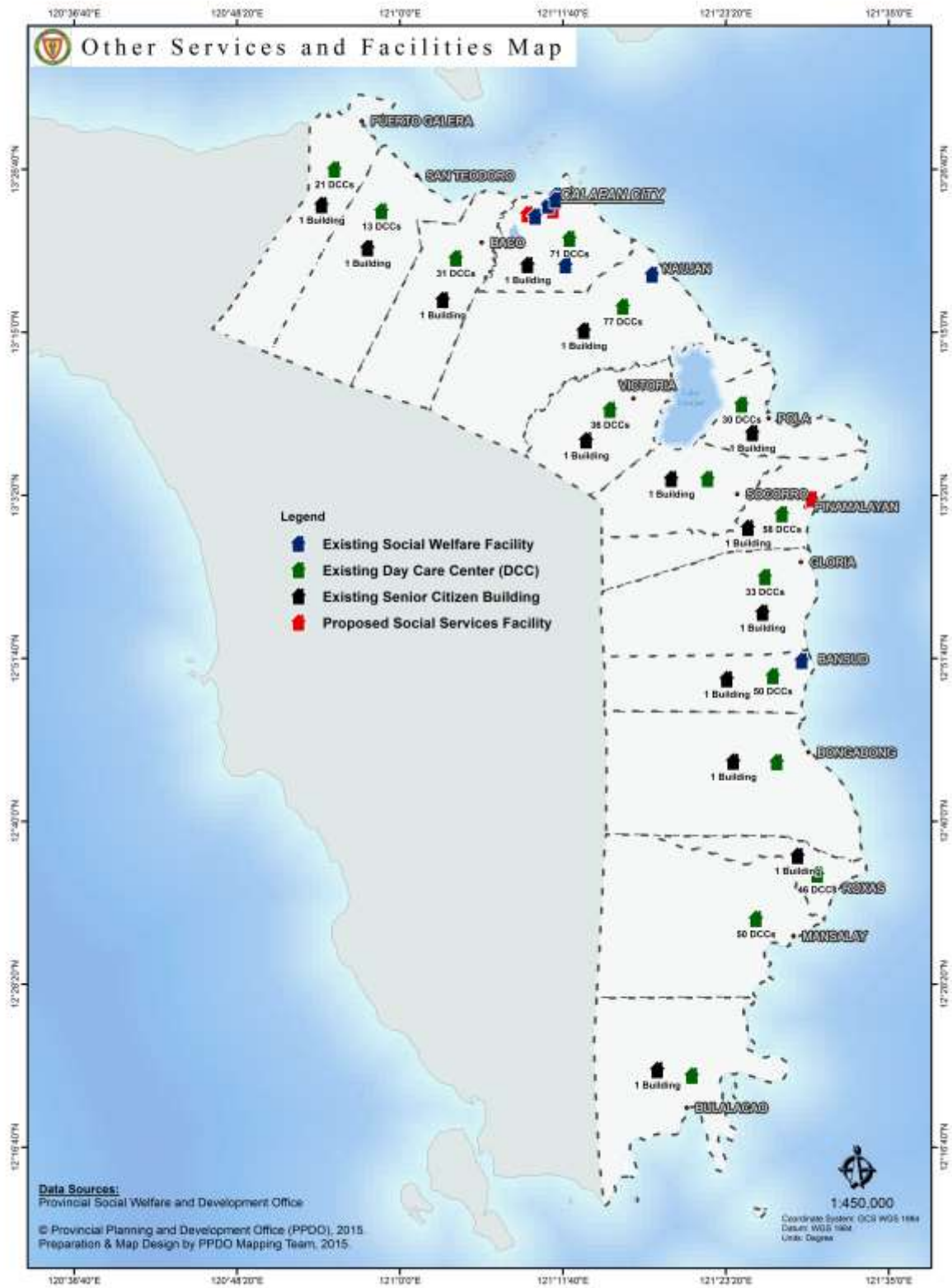
E. SOCIAL WELFARE SERVICES

| Municipality | No. of Social Worker | No. of Day Care Worker | No. of Day Care Centers | No. of Children Served | No. of Registered Senior Citizens | |
|-------------------------|----------------------|------------------------|-------------------------|------------------------|-----------------------------------|---------------|
| | | | | | Male | Female |
| Baco | 2 | 19 | 19 | 946 | 1,478 | 1,030 |
| Bansud | 2 | 53 | 54 | 1,244 | 1,137 | 684 |
| Bongabong | 3 | 34 | 34 | 1,266 | 1,922 | 1,069 |
| Bulalacao | 0 | 48 | 48 | 1,085 | 955 | 560 |
| Calapan City | 10 | 71 | 71 | 2,526 | 6,300 | 3,970 |
| Gloria | 3 | 33 | 33 | 1,324 | 1,407 | 881 |
| Mansalay | 0 | 56 | 56 | 1,128 | 1,600 | |
| Naujan | 3 | 77 | 77 | 1,868 | 3,935 | |
| Pinamalayan | 3 | 58 | 58 | 2,094 | 2,930 | 1,878 |
| Pola | 2 | 29 | 28 | 866 | 1,322 | 1,011 |
| Puerto Galera | 2 | 17 | 16 | 601 | 843 | 586 |
| Roxas | 1 | 46 | 46 | 2,336 | 2,077 | |
| San Teodoro | 2 | 14 | 14 | 355 | 425 | 146 |
| Socorro | 1 | 42 | 42 | 1,043 | 1,283 | 805 |
| Victoria | 1 | 36 | 36 | 897 | 151 | 124 |
| PGOM-PSWDO/DSWD | 12 | 2 | 1 | 50 | | |
| Oriental Mindoro | 47 | 635 | 633 | 19,629 | 27,765 | 12,744 |

Source: Provincial Social Welfare and Development Office, 2015



Social Welfare Services and Facilities Map



Source: Provincial Planning and Development Office, 2015





F. PROTECTIVE SERVICES

1. Crime Statistics and Protective Facilities

| | No. | | No. |
|------------------------------------|-------|----------------------------------|-----|
| a. Crime Statistics | | c. Crime Against Property | |
| Crime Volume | 2,310 | Robbery | 130 |
| Crime Solved | 1,643 | Theft | 200 |
| Crime Unsolved | 667 | Carnapping | 43 |
| Crime Solution Efficiency (%) | 71.13 | Cattle Rustling | 3 |
| Ave. Monthly Crime Rate (AMCR) (%) | 23.60 | d. Facilities | |
| | | Building | 7 |
| b. Crime Against Person | | Serviceable Vehicles | |
| Murder | 57 | Patrol Jeep | 31 |
| Homicide | 75 | Patrol Cars | 9 |
| Physical Injuries | 646 | Motorcycles | 13 |
| Rape | 97 | | |

Source: Philippine National Police, 2015

2. Fire Prevention

| Municipality | No. of Fire Stations | No. of Fire Trucks | | | No. Office Personnel |
|---------------|----------------------|--------------------|------------|-----|----------------------|
| | | BFP | LGU | NGO | |
| OPFM* | | | | | 8 |
| Baco | 1 | | 1* | | 1 |
| Bansud | 1 | 2 | 1 | | 10 |
| Bongabong | 1 | 1 | | | 8 |
| Bulalacao | 1 | 1 | | | 5 |
| Calapan City | 1 | 3 | 2 | 3 | 17 |
| Gloria | 1 | 2 | | | 9 |
| Mansalay | 0 | 1 | 1 | | 5 |
| Naujan | 1 | 2 | 1* | | 9 |
| Pinamalayan | 1 | 1 | 1 | 1 | 11 |
| Pola | 1 | 2 | | | 9 |
| Puerto Galera | 1 | 2* | | | 7 |
| Roxas | 1 | 1 | | | 9 |
| San Teodoro | 1 | 1 | 1 | | 1 |
| Socorro | 0 | 1 | 1* | | 2 |
| Victoria | 1 | 2 | 1 | | 9 |
| TOTAL | 13 | 22 (1*) | 10 (3*) | 4 | 120 (5 NUP) |

Note: OPFM – Office of the Fire Marshal

* - unserviceable

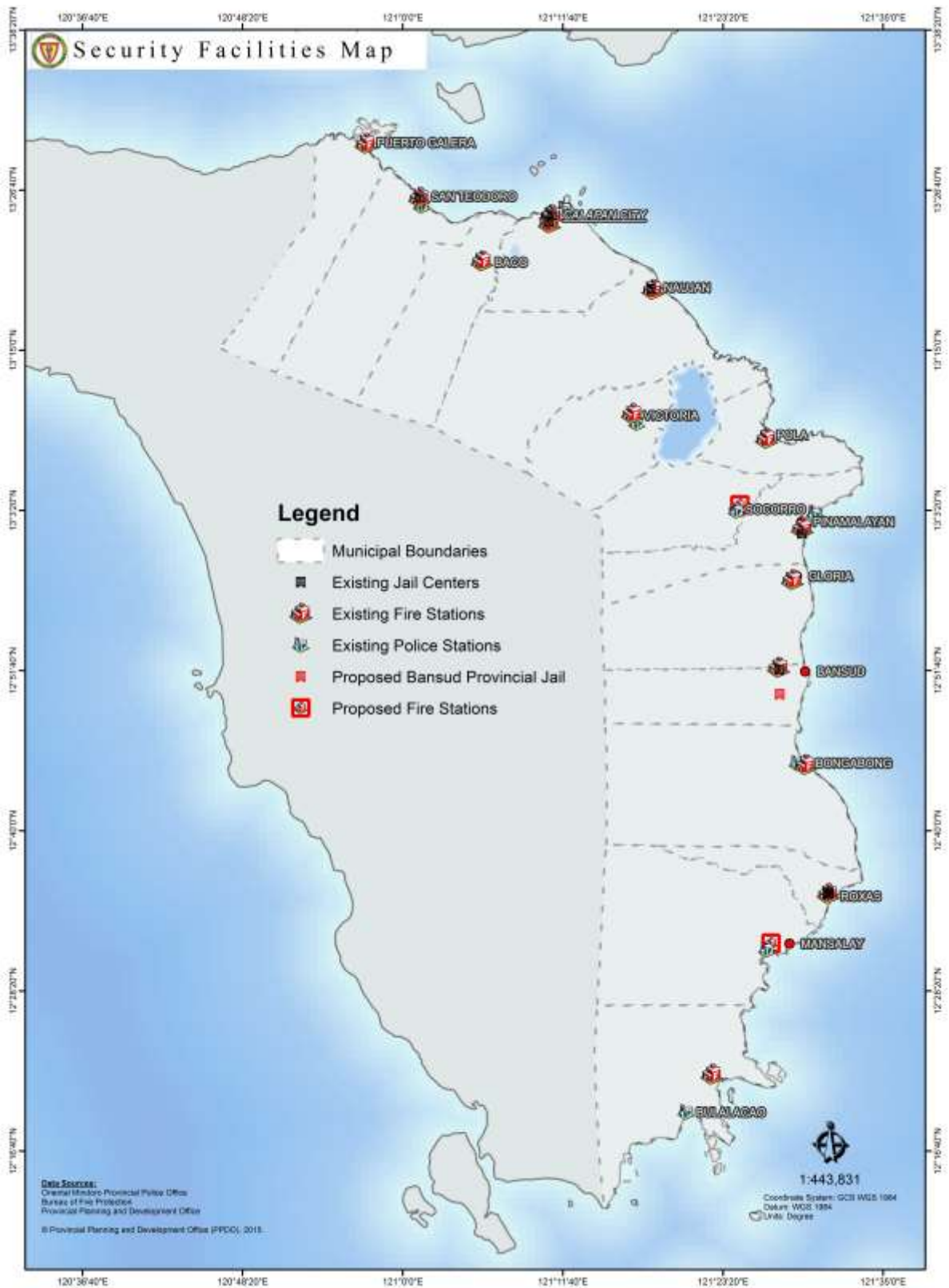
NUP – Non-Uniform Personnel

Source: Bureau of Fire Protection, 2015





Security Facilities Map



Source: Provincial Planning and Development Office, 2015





Financial Profile

A. INCOME CLASSIFICATION OF CITY/MUNICIPALITY

| City/Municipality | Class |
|-------------------|--------------------------------------|
| Oriental Mindoro | 1 st |
| Baco | 3 rd |
| Bansud | 2 nd |
| Bongabong | 1 st |
| Bulalacao | 3 rd |
| Calapan City | 3 rd Class Component City |
| Gloria | 3 rd |
| Mansalay | 2 nd |
| Naujan | 1 st |
| Pinamalayan | 1 st |
| Pola | 3 rd |
| Puerto Galera | 1 st |
| Roxas | 2 nd |
| San Teodoro | 4 th |
| Socorro | 3 rd |
| Victoria | 2 nd |

Source: Provincial Treasury Office, 2015

B. ANNUAL INCOME AND BUDGET PER CITY/ MUNICIPALITY

| City/ Municipality | Income [Php] | Budget [Php] |
|-----------------------|-------------------------|-------------------------|
| Baco | 94,254,036.89 | 98,764,696.43 |
| Bansud | 111,627,412.95 | 112,729,194.54 |
| Bongabong | 173,331,842.98 | 189,383,045.29 |
| Bulalacao | 104,568,224.87 | 103,680,244.72 |
| Calapan City | 573,578,923.09 | 570,643,290.11 |
| Gloria | 7,470,416.63 | 118,865,072.72 |
| Mansalay | 141,328,692.35 | 144,284,553.30 |
| Naujan | 213,577,206.86 | 234,694,336.36 |
| Pinamalayan | 184,096,122.96 | 189,074,646.00 |
| Pola | 83,700,855.91 | 124,165,515.23 |
| Puerto Galera | 136,426,252.29 | 129,512,254.00 |
| Roxas | 113,080,301.23 | 112,891,989.00 |
| San Teodoro | 85,111,694.12 | 85,650,597.68 |
| Socorro | 110,201,714.33 | 107,882,277.97 |
| Victoria | 113,421,966.48 | 128,518,225.05 |
| Total | 2,245,775,663.94 | 2,450,739,938.40 |

Sources: Provincial Treasury Office, Provincial Budget Office, 2015





C. INCOME AND EXPENDITURES, PROVINCIAL GOVERNMENT OF ORIENTAL MINDORO

| ITEM | AMOUNT (PhP) |
|---|------------------|
| Income and Expenditures | |
| Income (General & Special Educ. Fund) | 1,251,444,314.64 |
| Expenditures/Obligations | 1,067,505,506.92 |
| Total Revenues by Source | |
| Tax Revenue/Special Education Tax | 62,946,266.45 |
| Permit and Licenses | 789,000.00 |
| Service Income | 41,572,420.72 |
| Business Income | 36,903,264.26 |
| Other Income (Interest Income, IRA, Misc. Income) | 1,079,835,542.96 |
| Income from Grants and Donations | 29,397,820.55 |
| Total Expenditures by Object* – GF and SEF | |
| Personal Services | 366,000,402.74 |
| MOOE | 415,932,381.63 |
| Capital Outlays | 381,489,293.45 |

Source: Provincial Accounting Office, 2015

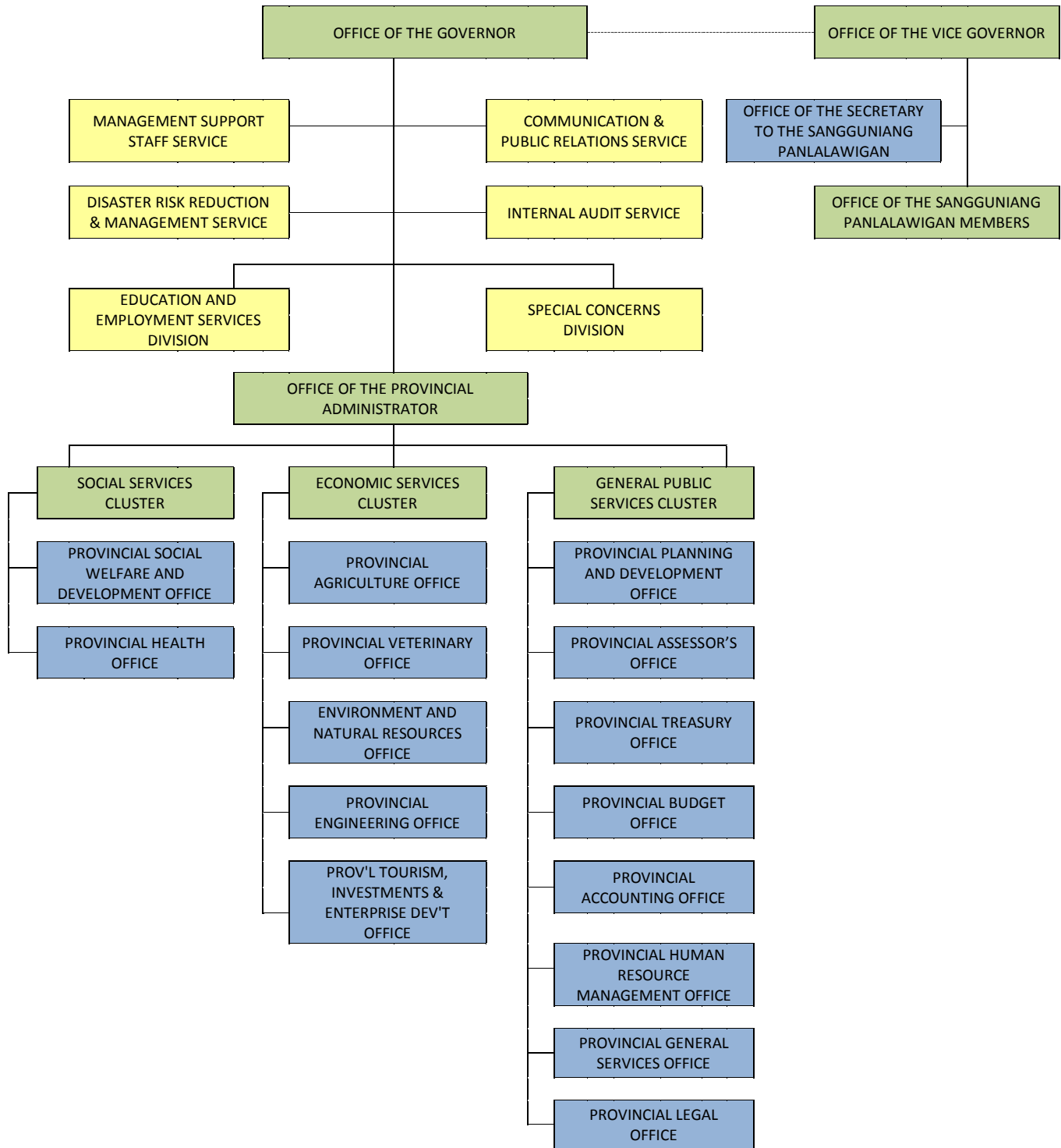
Note: *including continuing appropriation





Institutional Profile

A. ORGANIZATIONAL CHART OF THE PROVINCIAL GOVERNMENT OF ORIENTAL MINDORO



EXECUTIVE BRANCH

LEGISLATIVE BRANCH




B. PROVINCIAL GOVERNMENT PERSONNEL BY OFFICE (as of December 31, 2015)

| | Name of Office | No. of Plantilla Positions | No. of Filled-up Positions |
|----|--|-----------------------------------|-----------------------------------|
| 1 | Office of the Governor | 1 | 1 |
| | Management Support Staff Division | 14 | 9 |
| | Internal Audit Service Division | 6 | 5 |
| | Special Concerns Division | 9 | 9 |
| | Disaster Risk Reduction and Management Division | 6 | 5 |
| | Communication and Public Relations Division | 14 | 9 |
| | Education and Employment Services Division | 7 | 5 |
| 2 | Office of the Vice-Governor and Sangguniang Panlalawigan | 54 | 44 |
| 3 | Office of the Provincial Administrator | 29 | 22 |
| 4 | Provincial Planning and Development Office | 35 | 23 |
| 5 | Provincial Treasury Office | 37 | 29 |
| 6 | Provincial Accounting Office | 24 | 23 |
| 7 | Provincial Budget Office | 17 | 10 |
| 8 | Provincial Assessor's Office | 30 | 26 |
| 9 | Provincial Human Resource Management Office | 20 | 15 |
| 10 | Provincial General Services Office | 40 | 35 |
| 11 | Provincial Legal Office | 13 | 11 |
| 12 | Provincial Social Welfare and Development Office | 21 | 18 |
| 13 | Provincial Health Office | | |
| | Technical Services | 36 | 28 |
| | Oriental Mindoro Provincial Hospital | 182 | 134 |
| | Oriental Mindoro Central District Hospital | 47 | 19 |
| | Naujan Community Hospital | 23 | 21 |
| | Bulalacao Community Hospital | 20 | 19 |
| | Oriental Mindoro Southern District Hospital | 68 | 51 |
| 14 | Provincial Engineering Office | 117 | 104 |
| 15 | Provincial Agriculture Office | 51 | 41 |
| 16 | Provincial Veterinary Office | 22 | 16 |
| 17 | Environment and Natural Resources Office | 25 | 19 |
| 18 | Provincial Tourism, Investment and Enterprise Development Office | 20 | 12 |
| | Total | 989 | 762 |

Source: Provincial Human Resource Management Office, 2015




C. PROVINCIAL GOVERNMENT PERSONNEL BY STATUS (as of December 31, 2015)

| STATUS | Male | Female | Total |
|---------------------|------------|------------|------------|
| <i>Permanent</i> | 324 | 402 | 726 |
| First Level | 212 | 174 | 386 |
| Second Level | 112 | 228 | 340 |
| <i>Co-Terminous</i> | 10 | 12 | 22 |
| First Level | 6 | 7 | 13 |
| Second Level | 4 | 5 | 9 |
| <i>Elective</i> | 10 | 4 | 14 |
| TOTAL | 344 | 418 | 762 |

Source: Provincial Human Resource Management Office, 2015

