

## Original Groove System (OGS)

INSTALLATION-  
READY™

## QuickVic™ Rigid Coupling

STYLE 107N

[Download publication 06.23](#) for complete information

- Angled bolt pad housing design provides rigidity
- Sizes from 2–12" | DN50–DN300
- Pressures up to 750 psi | 5171 kPa | 52 bar
- [Download publication 17.01](#) for applications in stainless steel systems
- [Download publication 21.04](#) for applications in aluminum systems

## Certifications/Listings:


[Download publication 10.01](#) for Fire Protection Certifications/Listings
INSTALLATION-  
READY™

## QuickVic™ Flexible Coupling

STYLE 177N

[Download publication 06.24](#) for complete information

- Flexible pipe joint which allows for expansion, contraction and deflection
- Sizes from 2–8" | DN50–DN200
- Pressures up to 1000 psi | 6895 kPa | 69 bar
- [Download publication 17.01](#) for applications in stainless steel systems
- [Download publication 21.04](#) for applications in aluminum systems
- [Download publication 32.01](#) for applications in PVC systems

## Certifications/Listings:


[Download publication 10.01](#) for Fire Protection Certifications/Listings

## Zero-Flex™ Rigid Coupling

STYLE 07

[Download publication 06.02](#) for complete information

- Angled bolt pad housing design provides rigidity
- Sizes from 1–12" | DN25–DN300
- Pressures up to 750 psi | 5171 kPa | 52 bar
- For sizes 14–50" | DN350–DN1250, [download publication 20.02](#) for information on AGS Style W07

## Certifications/Listings:


[Download publication 10.01](#) for Fire Protection Certifications/Listings



## Flexible Coupling

STYLE 77

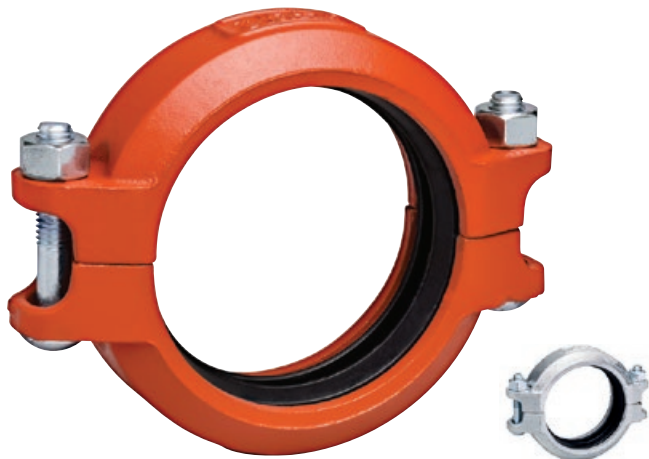
[Download publication 06.04](#) for complete information

- Flexible pipe joint which allows for expansion, contraction and deflection
- Sizes from 3/4 – 24" | DN20 – DN600
- Pressures up to 1000 psi | 6895 kPa | 69 bar
- For sizes 14 – 78" | DN350 – DN1950, [download publication 20.03](#) for information on AGS Style W77
- [Download publication 32.01](#) for applications in PVC systems
- [Download publication 21.01](#) for information on Style 77A for applications in aluminum systems

### Certifications/Listings:



[Download publication 10.01](#) for Fire Protection Certifications/Listings



## Flexible Coupling

STYLE 75

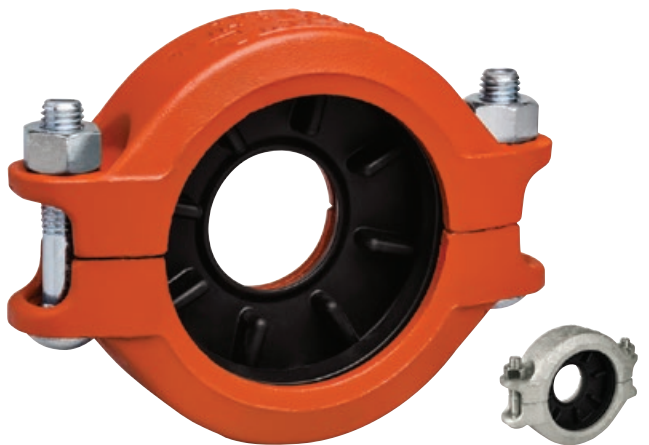
[Download publication 06.05](#) for complete information

- Lightweight coupling for moderate pressures
- Flexible pipe joint which allows for expansion, contraction and deflection
- Sizes from 1 – 8" | DN25 – DN200
- Pressures up to 500 psi | 3447 kPa | 34 bar
- [Download publication 32.01](#) for applications in PVC systems

### Certifications/Listings:



[Download publication 10.01](#) for Fire Protection Certifications/Listings



## Reducing Coupling

STYLE 750

[Download publication 06.08](#) for complete information

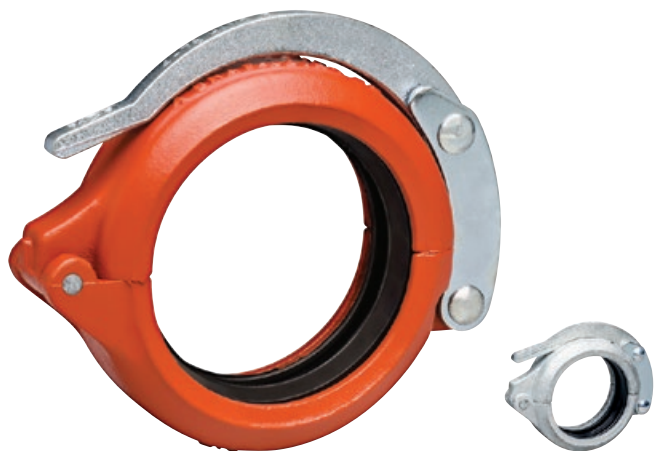
- Replaces two couplings and a reducing fitting
- Sizes from 2 – 10" | DN50 – DN250
- Pressures up to 500 psi | 3447 kPa | 34 bar

### Certifications/Listings:



[Download publication 10.01](#) for Fire Protection Certifications/Listings

## Original Groove System (OGS)



### Certifications/Listings:



## Snap-Joint™ Coupling

### STYLE 78

[Download publication 06.09](#) for complete information

- Designed for quick disconnect service
- Sizes from 1–8" | DN25–DN200
- Pressures up to 300 psi | 2068 kPa | 21 bar
- [Download publication 32.01](#) for applications in PVC systems
- [Download publication 21.02](#) for information on Style 78A for applications in aluminum systems



### Certifications/Listings:



[Download publication 10.01](#) for Fire Protection Certifications/Listings

## Vic-Boltless Coupling and Tool

### STYLE 791 COUPLING AND 792 TOOL

[Download publication 06.11](#) for complete information

- Provides a secure, tamper resistant, low profile joint
- Installed only with Victaulic® Style 792 tool
- Sizes from 2–8" | DN50–DN200
- Pressures up to 700 psi | 4826 kPa | 48 bar
- [Download publication 32.01](#) for applications in PVC systems



### Certifications/Listings:



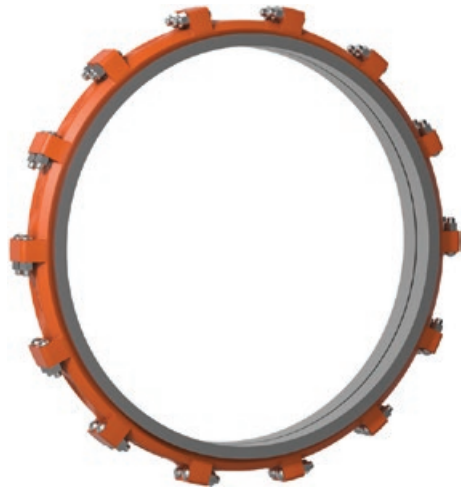
[Download publication 10.01](#) for Fire Protection Certifications/Listings

## High Pressure Rigid Coupling

### STYLE HP-70

[Download publication 06.12](#) for complete information

- Heavy housing for high pressure service
- Sizes from 2–16" | DN50–DN400
- Pressures up to 1000 psi | 6895 kPa | 69 bar



## Vic-Ring Coupling

### STYLE 41

[Download publication 16.04](#) for complete information

- Provided with a variety of ring options to maintain full pipe wall thickness for abrasive systems
- Sizes from 30–66" | DN750–DN1650
- Pressures up to 90 psi | 621 kPa | 6 bar
- For AGS *Vic-Ring* products, see pg. 33
- Regional availability, contact [Victaulic](#) for details



## Vic-Ring Coupling

### STYLE 44

[Download publication 16.05](#) for complete information

- Provided with a variety of ring options to maintain full pipe wall thickness for abrasive systems
- Sizes from 4–60" | DN100–DN1500
- Pressures up to 175 psi | 1207 kPa | 12 bar
- For AGS *Vic-Ring* products, see pg. 33
- Regional availability, contact [Victaulic](#) for details

## Original Groove System (OGS)



## Certifications/Listings:



[Download publication 10.01](#) for Fire Protection Certifications/Listings

## Vic-Flange Adapter

## STYLE 741

[Download publication 06.06](#) for complete information

- ANSI Class 125 and 150, Australian Standard Table E, and PN10/16 flanges
- Sizes from 2–24" | DN50–DN600
- Pressures up to 300 psi | 2068 kPa | 21 bar
- For AGS sizes 14–24" | DN350–DN600, [download publication 20.04](#) for information on AGS Style W741
- [Download publication 32.01](#) for applications in PVC systems



## Certifications/Listings:



[Download publication 10.01](#) for Fire Protection Certifications/Listings

## Vic-Flange Adapter

## STYLE 743

[Download publication 06.06](#) for complete information

- ANSI Class 300 flanges
- Sizes from 2–12" | DN50–DN300
- Pressures up to 720 psi | 4964 kPa | 50 bar
- [Download publication 32.01](#) for applications in PVC systems



## Fittings

[Download publication 07.01](#) for complete information on original grooved end fittings for carbon steel pipe

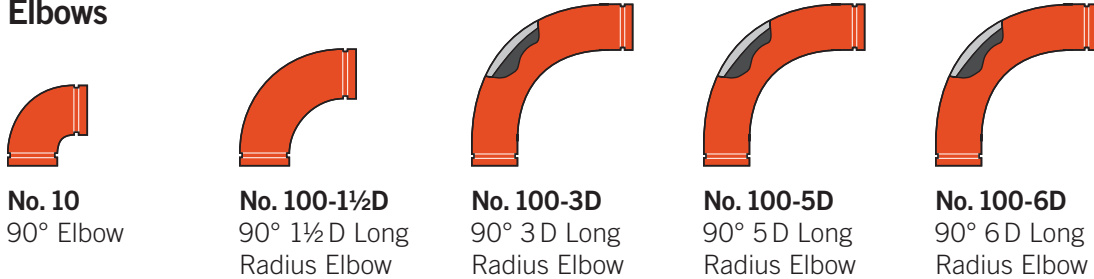
- Standard fitting pressure ratings conform to ratings of installed coupling
- All fittings supplied with grooves or shoulders for fast installation
- Fittings available from ¾–24" | DN20–DN600
- For AGS sizes 14–60" | DN350–DN1500, [download publication 20.05](#) for complete information

### Certifications/Listings:



[Download publication 10.01](#) for Fire Protection Certifications/Listings

### Elbows



**No. 10**  
90° Elbow

**No. 100-1½D**  
90° 1½ D Long  
Radius Elbow

**No. 100-3D**  
90° 3 D Long  
Radius Elbow

**No. 100-5D**  
90° 5 D Long  
Radius Elbow

**No. 100-6D**  
90° 6 D Long  
Radius Elbow

For 3D, 5D and 6D long radius bends, [download publication 07.02](#)



**No. 11**  
45° Elbow

**No. 110-1½D**  
45° 1½ D Long  
Radius Elbow

**No. 110-3D**  
45° 3 D Long  
Radius Elbow

**No. 110-5D**  
45° 5 D Long  
Radius Elbow

**No. 110-6D**  
45° 6 D Long  
Radius Elbow



**No. 12**  
22½° Elbow

**No. 13**  
11¼° Elbow

**No. 18**  
90° Adapter  
Elbows

**No. 19**  
45° Adapter  
Elbows



**No. 10-DR**  
Drain Elbow

**No. R-10G**  
Reducing Base  
Support Elbows  
(OGS Groove x  
OGS Groove)

**No. R-10F**  
Reducing Base  
Support Elbows  
(OGS Groove x  
Flange)



For coating options, [download publication 07.01](#)

## Original Groove System (OGS)



## Fittings

[Download publication 07.01](#) for complete information on original grooved end fittings for carbon steel pipe

- Standard fitting pressure ratings conform to ratings of installed coupling
- All fittings supplied with grooves or shoulders for fast installation
- Fittings available from ¾–24" | DN20–DN600
- For AGS sizes 14–60" | DN350–DN1500, [download publication 20.05](#) for complete information

### Certifications/Listings:



[Download publication 10.01](#) for Fire Protection Certifications/Listings

### Tees, Crosses, Wyes, and Laterals



**No. 20**  
Tee



**No. 25**  
Grooved Branch  
Reducing Tee



**No. 29M**  
Tee with  
Threaded Branch



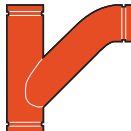
**No. 29T**  
Threaded Branch  
Reducing Tee



**No. 30**  
45° Lateral



**No. 30-R**  
45° Reducing  
Lateral



**No. 32**  
Tee Wye



**No. 32-R**  
Reducing  
Tee Wye



**No. 33**  
True Wye



**No. 35**  
Cross



## Fittings

[Download publication 07.01](#) for complete information on original grooved end fittings for carbon steel pipe

- Standard fitting pressure ratings conform to ratings of installed coupling
- All fittings supplied with grooves or shoulders for fast installation
- Fittings available from ¾–24" | DN20–DN600
- For AGS sizes 14–60" | DN350–DN1500, [download publication 20.05](#) for complete information

### Certifications/Listings:



[Download publication 10.01](#) for Fire Protection Certifications/Listings

## Adapters, Nipples, Caps and Plugs



**No. 40**  
Adapter Nipple  
(OGS Groove x Thread)



**No. 41**  
ANSI Class 125  
Flanged Adapter Nipple



**No. 41-DN**  
PN10/16  
Flanged Adapter Nipple



**No. 42**  
Adapter Nipple  
(OGS Groove x Bevel)



**No. 43**  
Adapter Nipple  
(OGS Groove x OGS Groove)



**No. 45F**  
ANSI Class 150  
Flat Face  
Flanged Adapter Nipple



**No. 45R**  
ANSI Class 150  
Raised Face  
Flanged Adapter Nipple



**No. 45RE**  
PN10/16 Raised  
Face Flanged  
Adapter Nipple



**No. 46F**  
ANSI Class 300  
Flat Face  
Flanged Adapter Nipple



**No. 46R**  
ANSI Class 300  
Raised Face  
Flanged Adapter Nipple



**No. 48**  
Hose Nipple



**No. 50**  
Concentric  
Reducer



**No. 51**  
Eccentric  
Reducer



**No. 52**  
Small Threaded  
Reducer



**No. 53**  
Swaged Nipple  
(OGS Groove x  
OGS Groove)



**No. 54**  
Swaged Nipple  
(OGS Groove x  
Thread)



**No. 55**  
Swaged Nipple  
(Thread x  
OGS Groove)



**No. 60**  
Cap



**No. 61**  
Bull Plug



**No. 80**  
Female  
Threaded  
Adapter



## Original Groove System (OGS)



### Mover Expansion Joint

STYLE 150

[Download publication 09.04](#) for complete information

- Slip-type expansion joint providing up to 3" | 76 mm axial end movement
- Sizes from 2–6" | DN50–DN150
- Pressures up to 350 psi | 2413 kPa | 24 bar



### Expansion Joint

STYLE 155

[Download publication 09.05](#) for complete information

- Combination of grooved flexible couplings and short nipples, joined in tandem to provide increased expansion
- Style 155 grooved expansion joints are rated to the working pressure of the coupling used
- Sizes from ¾–12" | DN20–DN300
- For AGS sizes 14–24" | DN350–DN600, [download publication 20.12](#) for information on Style W155