

Ostendo – Xero

Integration Reference Guide



Contents

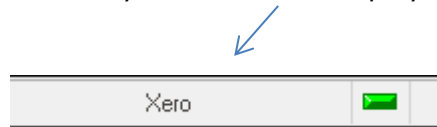
General Overview:	1
Decision Process:	1
Overview:	1
Xero Limits:	2
Determining the Integration Method	3
Method 1 Explained: (Preferred Method)	4
Method 2 Explained:	5
Method 3 Explained: (NB: Available Late 2021)	7
Base Integration Setup (All Methods)	8
Preparation - Xero:	8
Xero Invite	8
Preparation - Ostendo:	8
Sales Rules	8
System Settings	8
User Security and Settings User Option	9
Purchase Rules	10
Tax Codes	10
General Ledger Settings	12
Method 1 Setup:	16
Debtors Opening Balances:	16
Method 2 Setup:	17
Debtors Opening Balances:	17
Xero Bank Clearing Account:	17
Xero Bank Clearing Bank Rule	18
Method 3 Setup:	19
Xero Bank Clearing Account:	19
Xero Bank Clearing Bank Rule	20
Ostendo Trade Debtors GL Account	21
Debtors Opening Balances	21
Exchange Rate Gain or Loss	21
Cost Centre Mapping	22
Overview:	22
Cost Centre Mapping Ostendo Cost Centres To Xero GL	22
Information To Note about Mapping and Methods	23
Method 1 Cost Centre Mapping for Bank	23
Method 2 & 3 Cost Centre Mapping for Bank	23
Method 3 only Cost Centre Mapping for Debtors	23
Methods 2 & 3 Cost Centre Mapping for Exchange Loss or Gain	23
Ostendo Cost Centres Defined	24
Base Cost Centres	24
Cost Centre Groups	24

Cost Centre Maintenance	24
Base Cost Centre Mapping	24
Points of Integration:	28
Contacts	28
Manual Journals	28
Invoices	28
Credit Notes	28
Payments	28
Customer Payments entered directly into Xero	28
Over-Payments & Pre-Payments -	29
Sales Credit Allocations (Methods 1 & 2)	29
The Automated Posting Process:	31
Appendix A: (Ostendo-Xero Data Mapping)	34
Suppliers	34
Customers	35
JOURNALS (except Invoice Payments and Invoice Deposits)	36
Journals - Invoice Payment and Invoice Deposit	36
Invoices	37
Credit Notes	38

General Overview:

Ostendo integration with Xero offers an automated approach to the posting process of financial entries. This means that depending upon your posting frequency setting, the financial transactions created in Ostendo will automatically be passed through to Xero at a minimum of 5-minute intervals.

Integration with Xero is active when you see "Xero" displayed at the bottom status bar of the Ostendo main screen:



This document describes three methods of configuring Xero / Ostendo.

Why three methods?

The method you choose depends upon the areas of Ostendo you wish to use. It is principally about whether you wish to manage your Accounts Receivable from within Ostendo or within Xero.

In Ostendo, when setting up the connection to Xero, you will be prompted to log into Xero using your Xero Login email address. (Your user permission level must be at least Standard or Business Advisor).

Decision Process:

Overview:

One of three methods must be adopted for the purposes of handling Accounts Receivable. Each method is appropriate under its own specific circumstances.

It should be noted that none of these methods alter the way Ostendo passes Purchase Invoices to Xero. They are always passed in their most detailed form on an invoice-by-invoice and Line-by-Line basis.

Please carefully read the explanation of all three methods to assist you in determining the best method to employ for your site.

Xero Limits:

Please note that Xero has certain transaction limits. This link explains the current Xero Limits:

<https://developer.xero.com/documentation/oauth2/limits>

We have done the following to minimize the chances of exceeding these limits:

1. To reduce the number of calls we make to Xero when exporting customer and supplier records, we bundle 100 records at a time. However each request cannot exceed 3.5MB (size limit per call).
2. The 1000 API calls limit is a "rolling 24 hour period". So if API calls are spread out evenly then it would be less of an issue. We have provided in Systems Settings the function to set the frequency of posting. If you have high transaction volumes, you may need to set a more regular posting frequency (perhaps hourly or every 30 mins).

You should also be familiar with Xero's SYSTEM LIMITS as described in the link above:

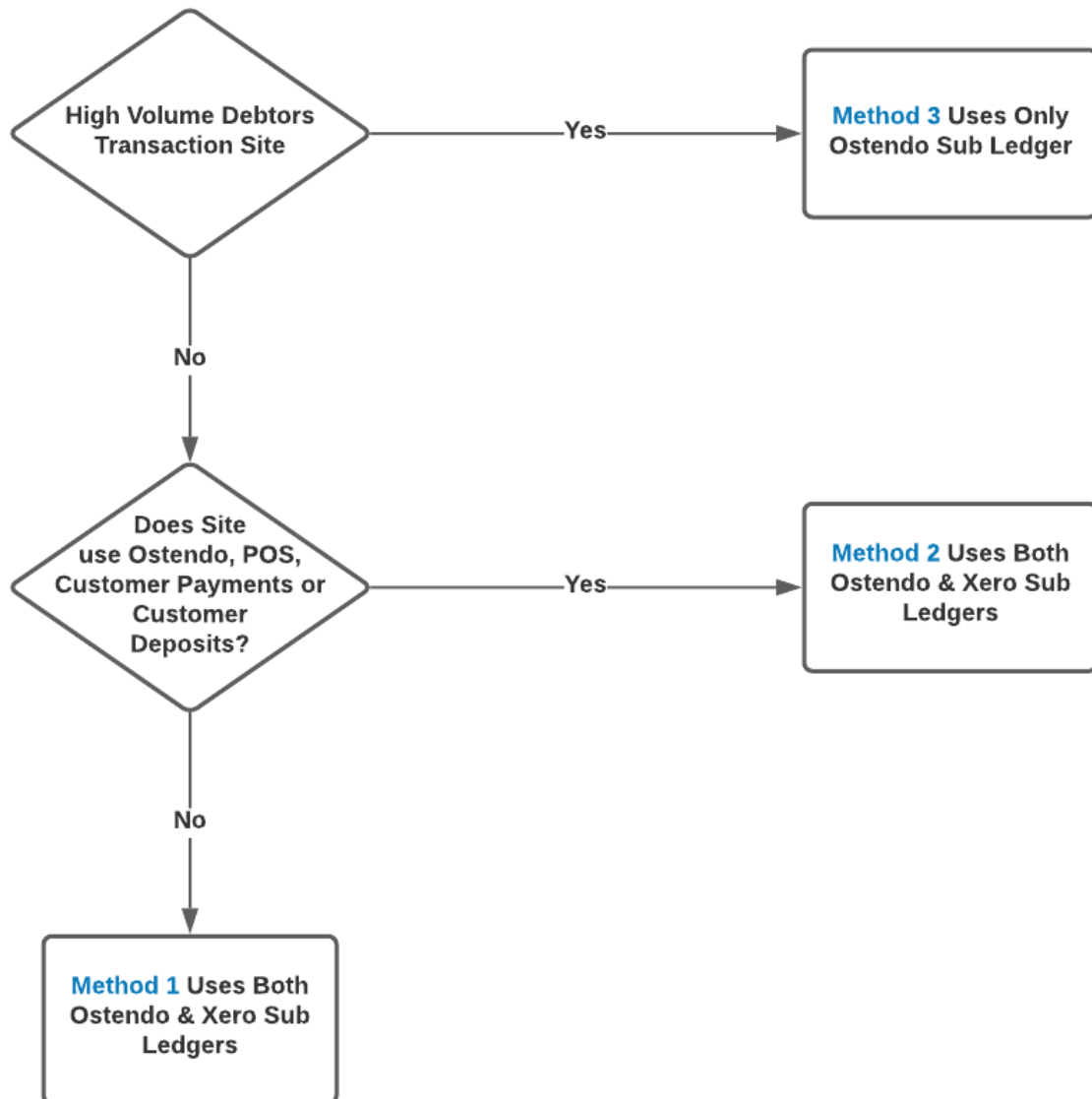
- a. Xero is designed for volumes of up to 1,000 Sales invoices (Accounts Receivables) and 1,000 Purchases bills (Accounts Payables) per month, dependent also on the frequency of invoicing during the month, variability of amounts and the frequency of sales tax reporting requirements.
- b. Using Xero to handle Inventory of more than 1000 items may cause performance issues, therefore using Ostendo to handle inventory will minimise the transactions problems.
- c. Storing more than 5000 Contacts (suppliers + customers + employees) in Xero could also cause performance issues.

There are also Pricing Plan limits – which determines the number of Invoices that can be processed by Xero in a month.

Determining the Integration Method

NB: Method 3 will be available Late 2021

Ostendo - Xero Integration Method Selection



Method 1 Explained: (Preferred Method)

Uses both Xero and Ostendo Accounts Receivable Sub Ledgers

This method allows you to process AR payments from within Xero. The invoice will be raised in Ostendo, then passed through to Xero AR where you later record the customer payment through the Bank Reconciliation screen or via the Customer Payment options directly from Xero. Ostendo then reads back the customer payment and updates the invoice in Ostendo and creates an updated customer payment. (no financial posting is generated in Ostendo with this type of payment as it has already occurred within Xero)

This means that Ostendo AR ledger is constantly kept in sync with the Xero AR ledger.

Customer Statements could be run from either Xero or Ostendo.

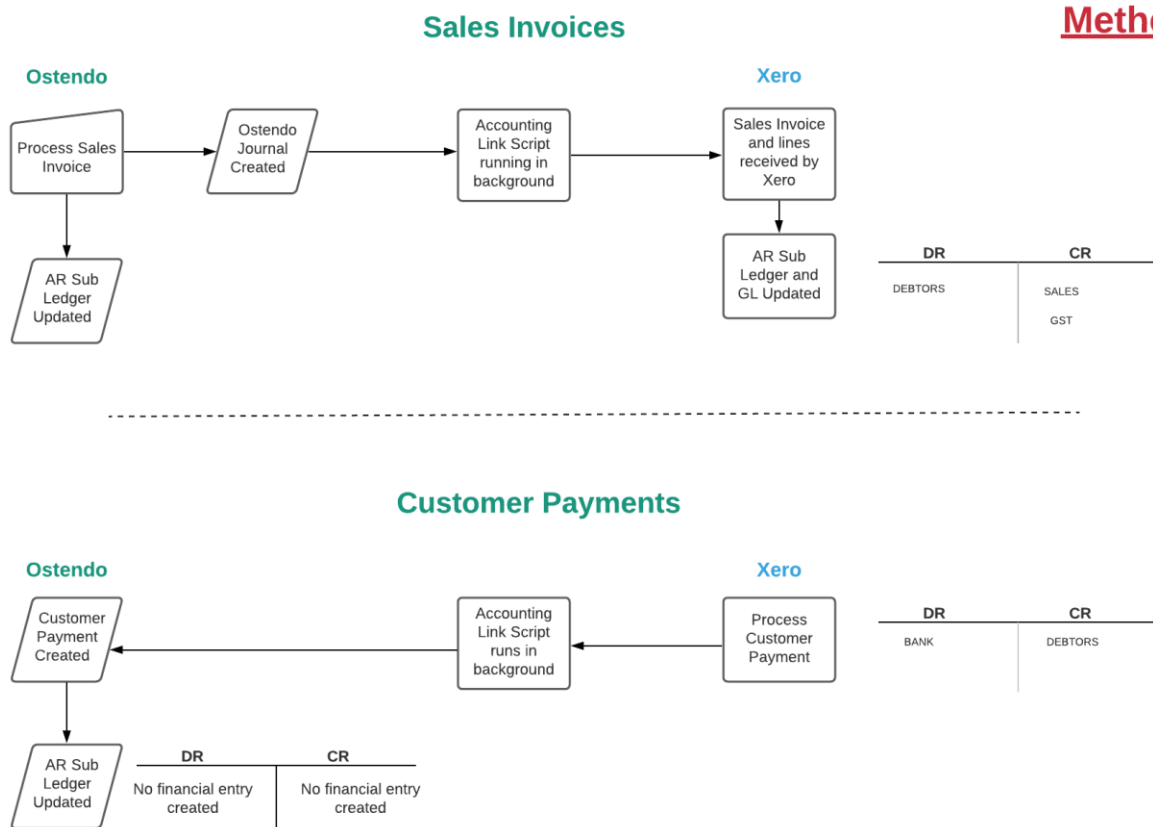
As customers are added or maintained in Ostendo, those records are passed automatically with the posting process to Xero resulting in either new Contacts added, or existing Contact updated in Xero.

Sales Credit Allocations:

The API does not allow Ostendo receive Sales Credit Allocations to Invoices, therefore these must be manually processed in both systems in order to keep the AR Ledgers in sync.

Credit Allocation in Xero = Customer Payment Style 'Match Credits to Invoices in Ostendo.

The process in both systems does not generate any financial entries.



Method 2 Explained:

Uses both Xero and Ostendo Accounts Receivable Sub Ledgers

This method allows you to manage AR primarily from Ostendo. The invoice will be raised in Ostendo, then passed through to Xero AR. However unlike Method 1, you would then process the customer payment from within Ostendo. This payment will then be passed through to Xero to update Xero's AR ledger.

Method 2 MUST be used if 'ANY' of these types of transactions originate from within Ostendo

- Point Of Sale
- Customer Payments
- Customer Deposits

This can also be used if an existing Ostendo site prefers to capture customer payments directly within Ostendo even if Ostendo POS or Customer Deposits are not used.

The approach here is that customer payments are primarily maintained within Ostendo and are passed to Xero for Bank reconciliation purposes. Financial Postings are also passed through to Xero in this case.

Customer Statements could be run from either Xero or Ostendo

When you perform a bank reconciliation in Xero, instead of matching the payment to the Sales Invoice, you would be applying a Bank Rule to transfer the amount from a Bank Clearing account (Current Asset) to the Xero Bank account (Bank). This is because Xero does not allow Ostendo to post the Payment directly to the Xero Bank Account, therefore a clearing account is used to post to from Ostendo, leaving Xero to transfer this to Bank clearing at the point of reconciliation.

As customers are added or maintained in Ostendo, those records are passed automatically with the posting process to Xero resulting in either new Contacts added, or existing Contact updated in Xero.

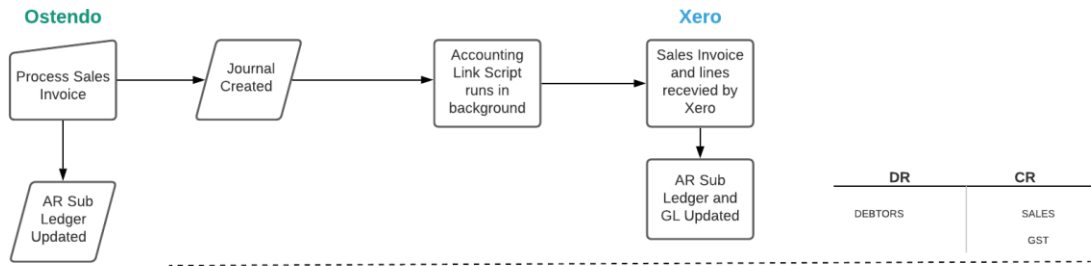
Sales Credit Allocations:

The API does not allow Ostendo receive Sales Credit Allocations to Invoices, therefore these must be manually processed in both systems in order to keep the AR Ledgers in sync.

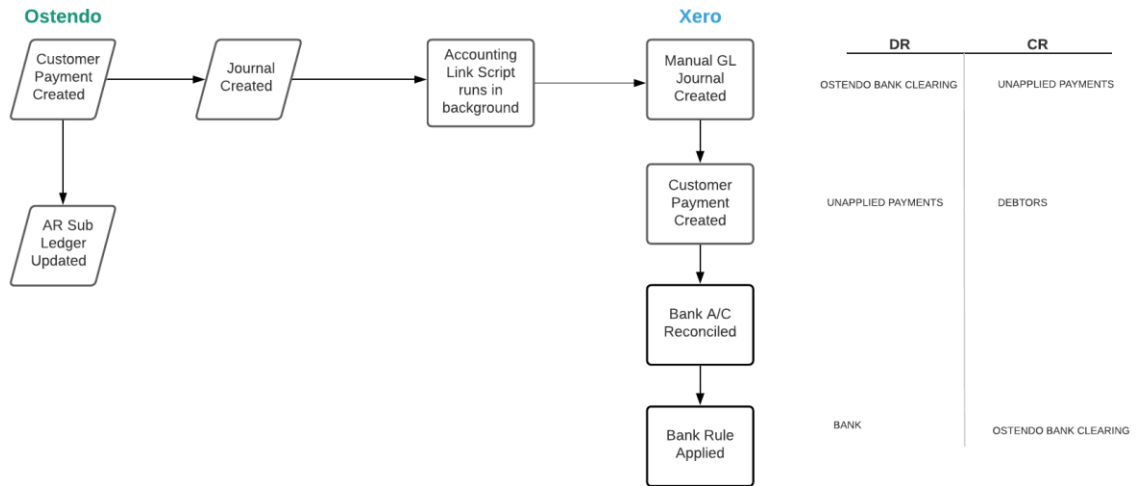
Credit Allocation in Xero = Customer Payment Style 'Match Credits to Invoices in Ostendo.

The process in both systems does not generate any financial entries.

Sales Invoices



Customer Payments



Method 3 Explained: (NB: Available Late 2021)

Uses only Ostendo AR Ledger

This method should be used in high volume environments to minimise transaction volumes being passed to Xero. An example of a high volume site would be 500 sales and purchase invoices per day with an average number of lines being 20 or more.

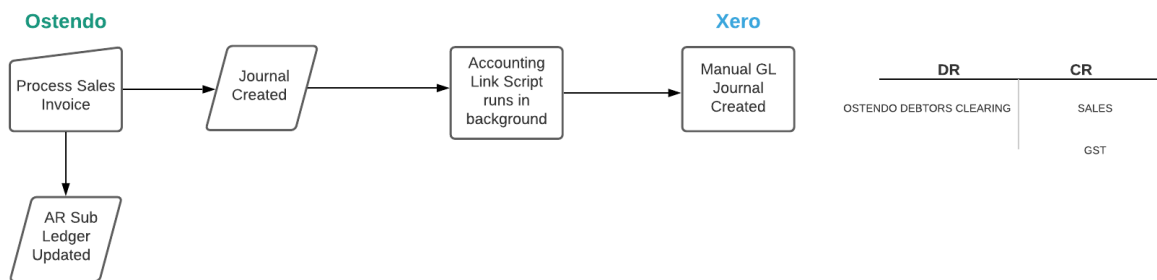
Sales and Payment transactions are posted to Xero in a summarised form and processed daily as one Manual GL Journal. This approach means your debtors ledger is solely controlled from Ostendo. The Xero AR sub ledger and Customer Contacts are not used. Xero will only report the total Debtors value at a Balance Sheet level, whilst Ostendo will provide the detail from its own sub-ledger reporting.

This method adopts the approach that the AR ledger is solely maintained within Ostendo therefore Customer Statements can only be run from Ostendo.

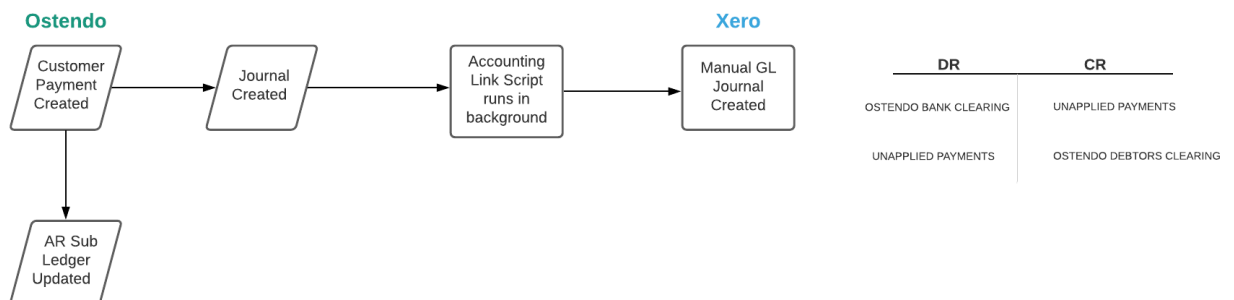
When you perform a bank reconciliation in Xero, instead of matching the payment to the Sales Invoice, you would be applying the previously created Bank Rule to transfer the amount from a Bank Clearing account to the Xero Bank account.

Method 3

Sales Invoices



Customer Payments



Base Integration Setup (All Methods)

This process sets up the communication link between Ostendo and Xero using OAuth2 security and Xero's API. This setup must be done first

Preparation - Xero:

Xero Invite

Xero Login

Your Xero login User permissions level must be at least **STANDARD**.

Note: if this permission level is downgraded to anything lower than STANDARD, the integration between Ostendo and Xero will be disconnected.

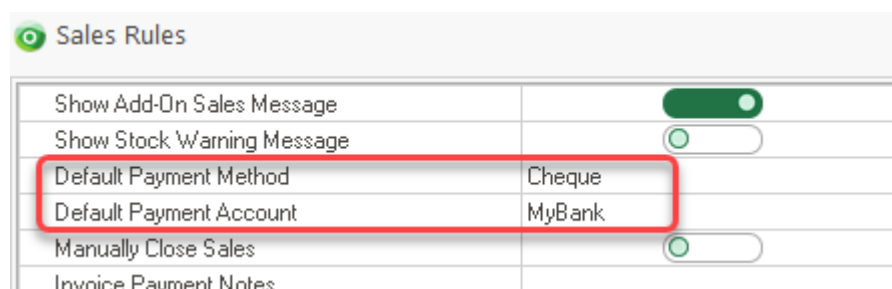
Preparation - Ostendo:

Sales Rules

Sales -> Settings -> Sales Rules

Default Payment Method
Default Payment Account

These defaults (or those set against the actual Customer) are used when Payments are created in Ostendo.



Sales Rules	
Show Add-On Sales Message	<input checked="" type="checkbox"/>
Show Stock Warning Message	<input type="checkbox"/>
Default Payment Method	Cheque
Default Payment Account	MyBank
Manually Close Sales	<input type="checkbox"/>
Invoice Payment Notes	

System Settings

File -> System Configuration

- 1) **Accounting Link Style** = Xero
- 2) Set the **Posting Frequency** (Recommended 30 – 60 minutes. Large volume sites should be greater)
- 3) **Cutover Date** = This controls whether financial entries will be posted to Xero based on their transaction date.
- 4) **Timeout** = 120 mins **Retry Count** = 1
- 5) **AR Style** : Select either:
 - Standard Invoice and Payments Posting** (Methods 1 & 2)
 - or **Post Invoices and Payments as Journals** (Method 3 only)
- 6) **Post all Foreign Currency transactions as Local Currency Ledger transactions:**
DO NOT TICK this if you wish to post foreign currency transactions as FOREIGN CURRENCY with accompanying exchange rates.

Tick this if you wish to post all Foreign Currency transactions to Xero in your local currency for example if you are posting to a Xero 'Standard' version which does not have Multiple Currency capabilities.

NB: This applies to all Debtor AND Purchase Invoices processed in Ostendo

- 7) **Post Daily Summaries (Method 3 Only)** – Only used if AR Style = “Post Invoices and Payments as Journals” is selected, then you can also select various transaction types of Daily Summaries by ticking the appropriate box in the list provided. *NB: Journals will NOT be summarised If 'Post Daily Summaries the Following Day (Step 10)' is NOT ticked.*
- 8) **External Accounts Receivable** is automatically ticked for Xero (this cannot be overridden and is ignored by Ostendo when AR Style = Journals)
- 9) **Prevent Manual Payments** Tick this when using Method 1. This prevents Ostendo users from entering Customer Payments as a Payment Style of 'Received Payment'
- 10) **Post Daily Summaries the Following Day - (Method 3 Only)** This is used in conjunction with the Daily Summaries specified above in step 7 and will accumulate all relevant types of transactions specified above from being posted immediately and release the Summary batches to Xero the next day. (Used to reduce volumes posted to Xero)

System Settings

Company Information | Environment Settings | System Numbering | **Accounting Link**

Accounting Link Style **1** Xero Posting Frequency 5 Minute **2**

Process Batch Files Script Cutover Date 16/12/2020 **3**

Re-Process Old Batch File Script Timeout (min) 120 Retry Count 1 **4**

5 AR Style Standard Invoice and Payment Posting Invoice Number Prefix

6 Post all Foreign currency transactions as Local currency Ledger transactions

7

- Post Daily Summaries for Applying Deposits
- Post Daily Summaries for Applying Payments
- Post Daily Summaries for Assembly Issues
- Post Daily Summaries for Assembly Receipts
- Post Daily Summaries for Assembly WIP Variances
- Post Daily Summaries for Customer Deposits (Only when using Bank Deposits)
- Post Daily Summaries for Customer Payments (Only when using Bank Deposits)
- Post Daily Summaries for Inventory
- Post Daily Summaries for Job Order Issues
- Post Daily Summaries for Job WIP Variances
- Post Daily Summaries for Purchase Receipts
- Post Daily Summaries for Purchase Price Variances
- Post Daily Summaries for Sales Invoice Costs
- Post Daily Summaries for Sales Invoice Revenue
- Post Daily Summaries for Sales Order Issues

8 External Accounts Receivable No External Payments Returned Prevent Manual Payments **9**

10 Post Daily Summaries the Following Day

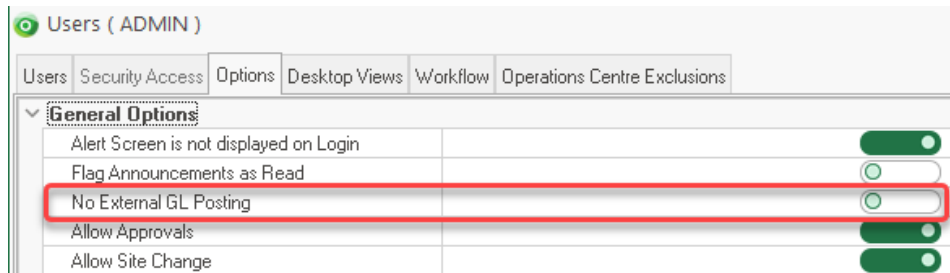
Close Save Cancel

User Security and Settings User Option

File -> System Configuration -> User Security & Options

Ensure at least one Ostendo user has the **No External GL Posting** selected.

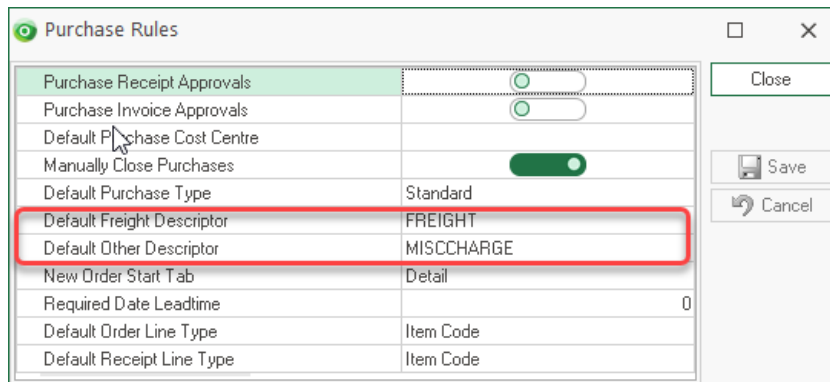
Posting of transactions to Xero is initiated when one or more Ostendo users (having "No External GL Posting" unticked) are logged in.



Purchase Rules

Purchasing -> Settings -> Purchase Rules

Ensure you have "**Default Freight Descriptor**" and "**Default Other Descriptor**" set to handle Freight and Additional Charges entered on the Purchase Invoice screen. These descriptors can be mapped accordingly to post charges to relevant GL Accounts.



Tax Codes

File -> Financial Configuration -> Tax Codes

- Ensure you have linked the appropriate External Tax Codes to the Ostendo Tax Codes.

NB: The setup below is typical for NZ, however for Australia and other regions, different External Tax Codes are used.

Please refer to <http://developer.xero.com/documentation/api/types/#TaxTypes>

In Ostendo, ensure the Tax Codes / Groups and Matrix rules have been specified.

Setup an appropriate Ostendo Tax Code with the Tax Rate %. Enter the appropriate Xero External Tax Code (Income) along with the External Purchase Tax Code (NB: These are case sensitive)

This means that one Ostendo Tax Code can be set for both Sales and Purchases whilst Xero's individual External Tax Codes will be used when the transactions are posted.

Tax Codes					
Default: GST					
Code	Description	Tax Rate %	Tax Type	External Tax Code	External Purchase Tax Code
GST	Goods & Services Tax	15	Standard	OUTPUT2	INPUT2
NT	Non Taxable	0	Standard	NONE	NONE
ZERO	Zero Rated Tax	0	Standard	ZERORATED	NONE

Ensure you have also setup up the Ostendo Tax Groups and Matrix.

Xero relies on specific Tax Types in order to determine Input / Output Tax. You must specify these from the base country of your Xero database.

Eg:

New Zealand

TAX TYPE	RATE	NAME	SYSTEM DEFINED
INPUT2	15.00	GST on Expenses	
NONE	0.00	No GST	Yes
ZERORATED	0.00	Zero Rated	
OUTPUT2	15.00	GST on Income	
GSTONIMPORTS	0.00	GST on Imports	Yes

Australia

TAX TYPE	RATE	NAME	SYSTEM DEFINED
OUTPUT	10.00	GST on Income	
INPUT	10.00	GST on Expenses	
EXEMPTEXPENSES	0.00	GST Free Expenses	Yes
EXEMPTOUTPUT	0.00	GST Free Income	
BASEXCLUDED	0.00	BAS Excluded	
GSTONIMPORTS	0.00	GST on Imports	Yes

New Zealand: INPUT2 (15% GST on Exps)
 OUTPUT2 (15% GST on Income)
 ZERORATED (Zero Rated on Income NB: Ensure the Ostendo External Purchase Tax Code is set to NONE)

Australia OUTPUT (10% GST on Exps)
 INPUT (10% GST on Income)
 ZERORATED (Zero Rated on Income NB: Ensure the Ostendo External Purchase Tax Code is set to NONE)

General Ledger Settings

File -> Financial Configuration -> General Ledger Settings

1. Ensure the **Default** = Xero (This is set initially from the System Settings Accounting Link Style)
2. Press the **Add** button to create a GL settings record
3. Use the Accounting Link drop down to select 'Xero'
4. Tick the **Debug Mode** option. This will automatically create batch posting debug files for every batch in a Debug folder within the Ostendo folder. These can be useful for later diagnostic analysis if required
5. Copy or type this URL into the URL Path field. <https://api.xero.com/api.xro/2.0/>
6. Ensure '**Use OAuth1.0a (Deprecated)**' is Unticked.
7. Press the **Update** Button to download the latest Ostendo Accounting Script. From this point on, Ostendo will automatically check for new versions of this script and load them when the first Ostendo user logs on each day. Once this has been run the Version will be displayed next to the Debug Mode field.
8. Press the Setup button to begin the connection setup to Xero

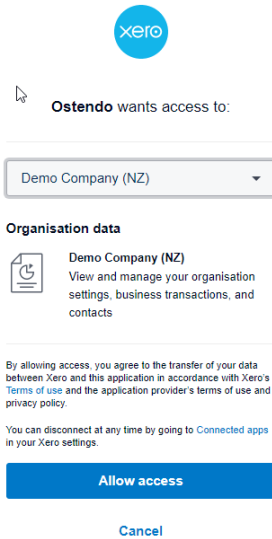
The screenshot shows the 'General Ledger Settings' window. At the top, it says 'Default: Xero' with a red circle 1. Below is a table with columns 'Accounting Link', 'Version', and 'Debugmode'. The 'Accounting Link' is 'Xero' (circled 3), 'Version' is empty, and 'Debugmode' is checked (circled 4). To the right of the table are buttons: Close, Add, Save, Cancel, Delete, Set Default, Connect, Import, Export, Update, and Setup (circled 8). Below the table are text boxes for 'URL or Path' (containing 'https://api.xero.com/api.xro/2.0/' circled 5), 'Database Path' (containing a file path), and 'API Token'. At the bottom, there is a checkbox 'Use OAuth 1.0a (Deprecated)' which is unchecked (circled 6). A red circle 7 is placed over the 'Update' button.

9. After the Setup button is pressed, your browser will be launched, and you will be directed to a Xero Log In screen.

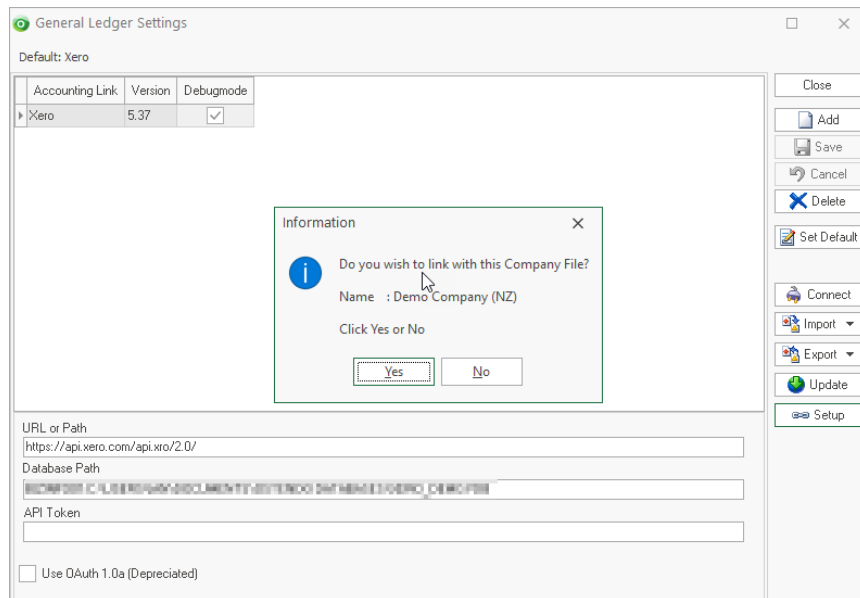
The screenshot shows the Xero logo at the top, followed by the text 'Log in to Xero'. Below this are two input fields: 'Email address' and 'Password'. A blue 'Log in' button is positioned below the fields. At the bottom, there are two links: 'Forgot password?' and 'Can't log in?'.

Type in the email address and password (must be the same account you were previously invited to from Xero)

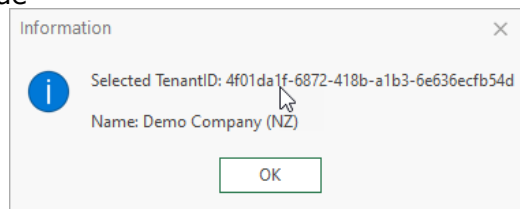
10. Select the organisation and press the 'Allow Access' button



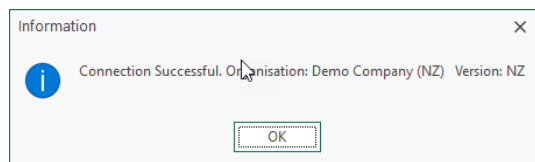
11. The above process will trigger Ostendo to pop up Information confirming access to the Xero organisation. Answer 'Yes' to this popup



12. An Information box will popup confirming the connection details. Press OK to continue



13. Finally, a confirmation Information box will popup confirming the connection is successful. Press OK to continue



- **Optional**

NB: Typically, this process is only used once if this is a new Ostendo or new Xero database where one of those databases contains Customers and / or Suppliers and the other does not.

Import button allows you to

- (Method 1 or 2) Add new Ostendo Customers from existing Xero Customer Contacts
- (Method 1 or 2) Update existing Ostendo Customers from existing Xero Customer Contacts
- (All Methods) Add new Ostendo Suppliers from existing Xero Supplier Contacts
- (All Methods) Update existing Ostendo Suppliers from existing Xero Supplier Contacts

Export button allows you to

- (Method 1 or 2) Add new Xero Customer Contacts from existing Ostendo Customers
- (Method 1 or 2) Update existing Xero Customer Contacts from existing Ostendo Customers
- (All Methods) Add new Xero Supplier Contacts from existing Ostendo Suppliers
- (All Methods) Update existing Xero Supplier contacts from existing Ostendo Suppliers

NB: It is important to note that Ostendo uses the Customer or Supplier name to match in both systems. (All Names are Case Sensitive). New Customers or Suppliers must be added or maintained in Ostendo, thereby the posting process will automatically manage those changes in Xero.

This completes the **Base Integration Setup** for all Methods

Method 1 Setup:

Assuming you have now ensured all Customers and Suppliers exist in both Ostendo and Xero you can now introduce all outstanding Sales Invoices as at your Cut Over Date. This process can be done manually or by importing those transactions into the relevant database.

Debtors Opening Balances:

These invoices need to exist in both Ostendo and Xero and have exactly the same

- Invoice Number
- Invoice Date (no later than the Cut Over date)
- Customer (Contact) Name
- Outstanding Invoice Amount (inclusive of GST)

GST consideration when entering Opening Balances.

[\(Refer to your Accountant if you are unsure\)](#)

Cash Basis:

Ensure the invoice lines contain the correct tax codes.

Invoice (Accrual Basis):

Each invoice line can have a No Tax (not Zero Rated) type code

This completes Method 1 setup, now refer to Cost Centre Mapping Section

Method 2 Setup:

Assuming you have now ensured all Customers and Suppliers exist in both Ostendo and Xero you can now introduce all outstanding Sales Invoices as at your Cut Over Date. This process can be done manually or by importing those transactions into the relevant database.

Debtors Opening Balances:

These invoices need to exist in both Ostendo and Xero and have exactly the same

- Invoice Number
- Invoice Date (no later than the Cut Overdate)
- Customer (Contact) Name
- Outstanding Invoice Amount (inclusive of GST)

GST consideration when entering Opening Balances. **(Refer to your Accountant if you are unsure)**

Cash Basis:

Ensure the invoice lines contain the correct tax codes.

Invoice (Accrual Basis):

Each invoice line can have a No Tax (not Zero Rated) type code

Xero Bank Clearing Account:

Because Xero does not allow us to post directly to a Bank account, we must post the Bank entries to a Xero General Ledger account called 'Ostendo Bank Clearing'. (This is an account type in Xero of '**Current Asset**', rather than that of a Bank Account.). A Bank Rule must be setup in Xero in order to automatically allow a transfer between this account and the actual bank account to enable the bank reconciliation in Xero to be completed.

It is important to note that a good knowledge of Xero is required for this, therefore we suggest you work with your Accountant.

1. Account Type = Current Asset
2. Tax = No GST
3. Tick 'Enable payments to the account'

Edit Account Details

Account Type 1

Code
A unique code/number for this account (limited to 10 characters)

Name
A short title for this account (limited to 150 characters)

[+ add Reporting Name](#)

Description (optional)
A description of how this account should be used

Tax
The default tax setting for this account
 2

Show on Dashboard Watchlist
 Show in Expense Claims
 Enable payments to this account 3

Xero Bank Clearing Bank Rule

Setup a Bank Rule in Xero to allow the Payment amount to be transferred from Ostendo Bank Clearing to the Bank Account

1. Ensure this is a 'Receive Money Rule'
2. Set to match 'All' conditions when Amount is greater than Zero
3. Set to 'the Payee from the bank'
4. Set the following:
 - Description – Transfer From Ostendo Bank Clearing
 - Account – Ostendo Bank Clearing
 - Tax Rate – No GST
 - Percent – 100%
5. The reference will be set 'from the Reference'
6. Target Bank Account – All or nominated
7. Title – Ostendo Bank Clearing

Bank Rules >
Edit Rule

Spend money rule **Receive money rule** Transfer money rule

1. When money received on the bank statement matches **All** of the following conditions...

Amount greater than 0.00

Add a condition

2. Set the contact...

The contact will be the Payee from the bank

3. Automatically allocate fixed value line items...

No fixed value line items

Add a new line

4. With the remainder, allocate items in the following ratios...

Description	Account	Tax Rate	Region	Percent...	
Transfer From Ostendo Bank Clearing Account	11160 - Ostendo Bank Clearing	No GST		100.00%	
				TOTAL	100.00%

Add a new line

5. Set the reference...

The reference will be set from the Reference

6. Target a bank account...

Run this rule on all bank accounts

7. Give the rule a title...

Ostendo Bank Clearing

Delete Save Cancel

This completes Method 2 setup, now refer to Cost Centre Mapping Section

Method 3 Setup:

Xero Bank Clearing Account:

Because Xero does not allow us to post directly to a Bank account, we must post the Bank entries to a Xero General Ledger account called 'Ostendo Bank Clearing'. (This is an account type in Xero of '**Current Asset**', rather than that of a Bank Account.). Then bank rules must be setup in Xero in order to automatically create a transfer between this account and the actual bank account to enable the bank reconciliation in Xero to be completed.

It is important to note that a good knowledge of Xero is required for this, therefore we suggest you work with your Accountant.

From the Chart Of Accounts within Xero, setup the following GL Account:

1. Account Type = Current Asset
2. Tax = No GST
3. Tick 'Enable payments to the account'

Edit Account Details

Account Type
Current Asset **1**

Code
A unique code/number for this account (limited to 10 characters)
11160

Name
A short title for this account (limited to 150 characters)
Ostendo Bank Clearing
[+ add Reporting Name](#)

Description (optional)
A description of how this account should be used

Tax
The default tax setting for this account
No GST **2**

Show on Dashboard Watchlist

Show in Expense Claims

Enable payments to this account **3**

Save **Cancel**

Xero Bank Clearing Bank Rule

Setup a Bank Rule in Xero to allow the Payment amount to be transferred from Ostendo Bank Clearing to the Bank Account

1. Ensure this is a 'Receive Money Rule'
2. Set to match 'All' conditions when Amount is greater than Zero
3. Set to 'the Payee from the bank'
4. Set the following:
 - Description – Transfer From Ostendo Bank Clearing
 - Account – Ostendo Bank Clearing
 - Tax Rate – No GST
 - Percent – 100%
5. The reference will be set 'from the Reference'
6. Target Bank Account – All or nominated
7. Title – Ostendo Bank Clearing

Bank Rules > **Edit Rule** 1

Spend money rule **Receive money rule** Transfer money rule

1. When money received on the bank statement matches **All** 2 of the following conditions...

Amount greater than

[Add a condition](#)

2. Set the contact...

The contact will be 3

3. Automatically allocate fixed value line items...

No fixed value line items

[Add a new line](#)

4. With the remainder, allocate items in the following ratios... 4

Description	Account	Tax Rate	Region	Percent...	
Transfer From Ostendo Bank Clearing Account	11160 - Ostendo Bank Clearing	No GST		100.00%	<input type="text"/>
				TOTAL	100.00%

[Add a new line](#)

5. Set the reference...

The reference will be set 5

6. Target a bank account...

Run this rule on 6

7. Give the rule a title...

7

[Delete](#) [Save](#) [Cancel](#)

Ostendo Trade Debtors GL Account

From the Chart Of Accounts within Xero, setup the following GL Account:

1. Account Type – Current Asset
2. Name – Ostendo Trade Debtors
3. Tax – No GST

Edit Account Details

Account Type
Current Asset 1

Code
A unique code/number for this account (limited to 10 characters)
11201

Name
A short title for this account (limited to 150 characters)
Ostendo Trade Debtors 2
[+ add Reporting Name](#)

Description (optional)
A description of how this account should be used

Tax
The default tax setting for this account
No GST 3

Show on Dashboard Watchlist
 Show in Expense Claims
 Enable payments to this account

Save **Cancel**

Debtors Opening Balances

As this method does not use the Xero Debtors AR Ledger, there is no need to enter any individual outstanding invoices as at Cut Over date, however a Xero Manual GL Journal will be required to populate the Ostendo Trade Debtors GL account with the total outstanding balances as at the Cut Over date.

Exchange Rate Gain or Loss

- If **Multi Currency transactions** are in use in Ostendo, you will also need to create an Expense Account in Xero called "**Ostendo Exchange Rate Gain or Loss**".

This completes Method 3 setup, now refer to Cost Centre Mapping Section

Cost Centre Mapping

Overview:

Each time a financial transaction is generated within Ostendo, an Ostendo financial record will be created with both Debit and Credit amounts. Ostendo uses Cost Centres to record these against. Simply put, think of a Cost Centre as a General Ledger code. In Ostendo, we simply map (link) the Ostendo Cost Centre Code to its Xero counterpart GL Code. Therefore, within Ostendo whilst we use these Cost Centre codes for reporting etc, we also use the linked GL accounts to each Cost Centre to create the financial transaction into Xero.

Ostendo Cost Centres also record Xero Tracking Categories if used. When Ostendo creates the financial transaction to Xero, these are included at the same time.

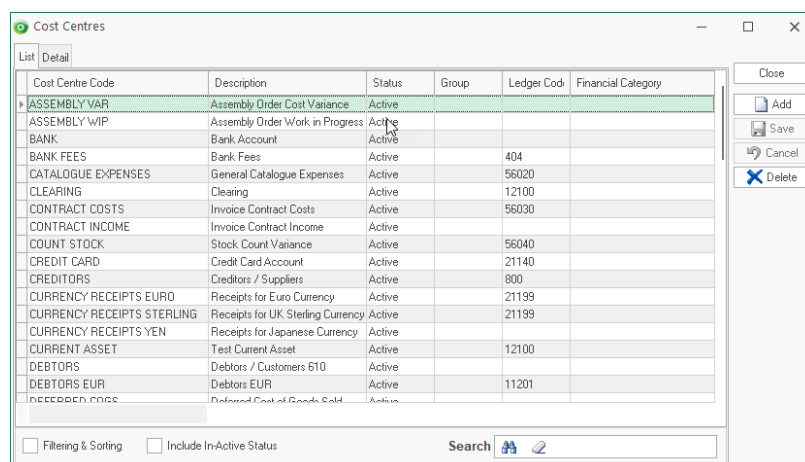
This next process describes how to link the Cost Centres to the GL and Tracking Categories together.

Before any mapping proceeds, it is essential that your Accountant is involved in this process to ensure the appropriate GL accounts are linked.

Cost Centre Mapping Ostendo Cost Centres To Xero GL

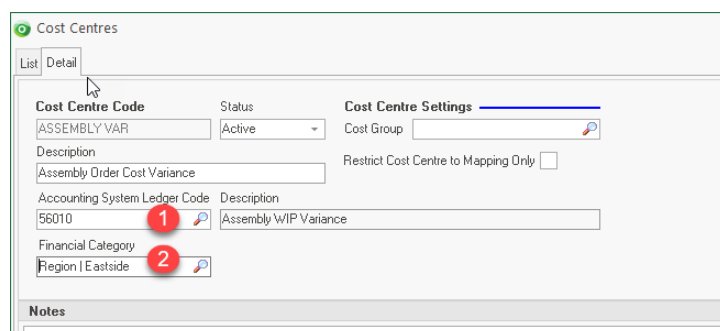
General -> Cost Centres

Select the Cost Centre Code and proceed to the Detail Screen



From the Detail screen

1. Browse and select the appropriate Xero GL Code
2. Browse and select the appropriate Xero Tracking Category (if required).



Hint: If you are missing a GL code or need to setup or amend a Xero Code, ensure you return to the Ostendo GL Settings screen and re-import GL Codes. This will update the GL Code and Tracking Categories in Ostendo

Information To Note about Mapping and Methods

Method 1 Cost Centre Mapping for Bank

As you will not be processing any Customer Payments directly from within Ostendo, you can leave the Cost Centre 'BANK' unmapped. Payments read back from Xero will not create any financial postings in Ostendo.

Method 2 & 3 Cost Centre Mapping for Bank

Ensure you map the Ostendo Bank Cost Centre(s) to the Xero GL Account named 'Ostendo Bank Clearing' (Not the Std Xero **Bank** Account)

Method 3 only Cost Centre Mapping for Debtors

Ensure you map the Ostendo Cost Centre 'DEBTORS' to the Xero GL Account named 'Ostendo Trade Debtors' (Not the Std Xero **Accounts Receivable** GL Account)

Methods 2 & 3 Cost Centre Mapping for Exchange Loss or Gain

If **Multi Currency transactions** are in use in Ostendo you will need to create an Expense Account in Xero called "**Ostendo Exchange Rate Gain or Loss**" and map the Exchange Rate Gain or Loss Cost centre in Ostendo to this. NB: You must not map this cost centre to the standard Xero Exchange Rate Gain or Loss GL account, as the Xero API prevents postings to this account

Ostendo Cost Centres Defined

Ostendo uses the concept of Cost Centres to record costs from all areas of the product. There are Base and User Defined Cost Centres and are directly linked to a Xero General Ledger Account Codes and if required, to a Xero Tracking Category

Base Cost Centres

Ostendo comes with 'Base Level' settings in which pre-defined Cost Centres are ready to be mapped to Xero GL Account Codes

Cost Centre Groups

General ->Settings ->Cost Groups

Cost Centres can be grouped into logical areas. These relate to the Cost Areas such as

- Asset
- Liability
- Income
- Expense
- Cost of Sale
- Bank
- etc

Cost Centre Maintenance

General ->Cost Centres

This screen shows all Base and User Defined Cost Centres. In the absence of any changes these Cost Centres will be used when integrating with Xero.

Base Cost Centre Mapping

File ->Financial Configuration ->Cost Centre Mapping

The above Base Cost Centres are linked to areas where costs are stored. Out-of-the-Box Ostendo contains a list of pre-defined areas and their associated Cost Centres. Typically, these mappings do not need to be amended.

The pre-defined areas are:

Stock: All Stock across all Warehouses and Locations in your Company's Inventory is kept against this Cost Centre. If a Warehouse is allocated a specific Cost Centre then that will be used in preference to this default.

Stock Adjustment Variance: Stock Adjustments are 'received from' or 'issued to' a Cost Centre. This Cost Centre provides a global place for 'posting' the Costs from this function

Negative Adjustment Variance: Stock adjustment variances can occur whenever you receive Stock but the current stock levels are negative. In this case the Average Cost for the Item is not amended but the difference between the Average Cost and the Cost of this receipt is 'posted' to this Cost Centre

Revaluation of Stock Variance: Whenever the Stock is re-valued (Standard Cost or Average Cost) the difference between the old value and the new value is 'posted' to this Cost Centre

Stock Count Variance: Stock variances (plus or minus) as a result of a Stock Count are 'posted' to this Cost Centre.

Stock In Transit: Whenever Stock is moved from one Warehouse to another via the Inventory Transfer routine this Cost Centre will be used for that transfer.

Receipt Cost Var: Used if the Inventory Costing method is 'Standard Costing'. In that instance this stores the cost difference between the Assembly Order actual Cost and the Standard Cost of the Item.

Descriptor Expenses: This is the default Cost Centre used by Descriptors. It can be amended at Descriptor level to another Cost Centre and made specific to that Descriptor. This Cost Centre is then used as the 'allocated' Cost Centre during Purchase Receipts.

Catalogue Expenses: This is the default Cost Centre used by Supplier Catalogue Items. This Cost Centre is used as the 'allocated' Cost Centre during Purchase Receipts. If a Supplier Catalogue is allocated a specific Cost Centre then that will be used in preference to this default.

Warranty Costs: Where a Job Issue has it's 'Actual Issue' allocated to a Charge Style of 'Warranty' then the costs are 'posted' to this Cost Centre

Contract Costs: Where a Job Issue has it's 'Actual Issue' allocated to a Charge Style of 'Contract' then the costs are 'posted' to this Cost Centre

Direct Labour Costs: When an Employee Timesheet Transaction is made then the costs are 'posted' to this Cost Centre

Fixed Labour Overhead Costs: When an Employee Timesheet Transaction is made then the associated FOH costs - held against the linked Labour Code - are 'posted' to this Cost Centre

Variable Labour Overhead Costs: When an Employee Timesheet Transaction is made then the associated VOH costs - held against the linked Labour Code - are 'posted' to this Cost Centre

Purchases Received Not Invoiced: For any Purchase Orders that have been received via the 'Purchase Order Receipts' function are held in this Cost Centre until they have been 'matched' in the 'Purchase Order Invoicing' screen

Purchase Price Variance: Purchase Orders received via the 'Purchase Order Receipts' function contain a Purchase Price and this is 'posted' at that time. When it is matched against the 'Purchase Order Invoicing' there may be a Price difference. This difference is posted to this Cost Centre.

Creditors: Whenever a Purchase Invoice is received then the amount of that Invoice is 'posted' to this Cost Centre.

Assembly Work In Progress: For any Issues (Material, Labour, Descriptors, etc) that have been issued to Work In Progress for an Assembly Order the cost of that issue is 'posted' to this Cost Centre. Note: The cost of the Assembly Order is taken out of this Cost Centre whenever the Assembly Order is received into Inventory

Assembly Order Variance: If the Assembly Order has been completed and its status is 'Closed' then any subsequent Issues or Bookings to this Order will go direct to this Cost Centre rather than the Assembly Work In Progress Cost Centre.

Job Work In Progress: For any Issues (Material, Labour, Descriptors, etc) that have been issued to Work In Progress for a Job Order the cost of that issue is 'posted' to this Cost Centre. Note: The cost of the Job Order is taken out of this Cost Centre whenever the Job Order is Invoiced.

Job Cost Of Goods Sold: Any Invoice raised against the Job Order will take the cost of the Invoice out of the 'Job Work In Progress' Cost Centre and add it to this Cost Centre.

Job Cost Variance: If the Job Order is 'Closed' then any subsequent Issues or Bookings to this Order will go direct to this Cost Centre rather than the Job Work In Progress Cost Centre.

Job Income: Any Income received that has been applied to a Job Invoice Line will be 'posted' to this Cost Centre.

Sales Lines Picked: Whenever a Sales Order Line is 'Picked' the cost of that line is moved from the source Cost Centre (Example: 'Stock' Cost Centre for Inventory Items) and moved to this Cost Centre.

Sales Cost Of Goods Sold: Whenever a Sales Order Line is 'Invoiced' the cost of that line is moved from the 'Sales Line Picked' Cost Centre to this Cost Centre.

Sales Income: Any Income received that has been applied to a Sales Invoice Line will be 'posted' to this Cost Centre.

Freight: Any Income received that covers Freight and has been applied to an Invoice will be 'posted' to this Cost Centre.

Debtors: Whenever an Invoice (or credit) is raised then the amount of that Invoice is 'posted' to this Cost Centre. Whenever a Deposit or Payments is matched to an Invoice then it is moved from this Cost Centre to the above Sales Invoice, Sales Freight, and Sales tax Cost Centres.

Contract Income: Any Income received that has been applied to a Contract Invoice Line will be 'posted' to this Cost Centre. Until it is 'posted' the income will reside in the 'Unapplied Deposits' or 'Unapplied Payments' Cost Centres

Deferred Cost Of Goods: The value of any Retention amount raised against a Job Order Invoice will take the cost of the Retention out of the 'Job Work In Progress' Cost Centre and add it to this Cost Centre.

Deferred Income: This is only used in 'Progress Claim' environments that have an Invoicing Schedule where the specific scheduled Invoice has an Accounting Style of 'Income Deferred'. This provides facility to have this type of Income deferred for future P & L recognition.

Deferred Freight: This is only used in 'Progress Claim' environments that have an Invoicing Schedule where the specific scheduled Invoice has an Accounting Style of 'Income Deferred'. This provides facility to have this type of Freight deferred for future P & L recognition

Deferred Tax: This is only used in 'Progress Claim' environments that have an Invoicing Schedule where the specific scheduled Invoice has an Accounting Style of 'Income Deferred'. This provides facility to have this type of Tax deferred for future P & L recognition

Un-Applied Deposits: (Methods 2 & 3 only) Deposits received from a Customer will be 'posted' to this Cost Centre. When they are applied to an Invoice they will be moved to the 'Sales Income' Cost Centre

Un-Applied Payments: (Methods 2 & 3 only) Payments received from a Customer will be 'posted' to this Cost Centre. When they are applied to an Invoice they will be moved to the 'Sales Income' Cost Centre

Bank: (Methods 2 & 3 only) Upon validation that the Payment was banked (Deposit Slip status updated to 'Banked' then the amount is transferred from the 'Un-deposited Funds' Cost Centre and 'posted' to this Cost Centre

Payment Rounding: (Methods 2 & 3 only) If the 'matched' payment amount is within a 'Rounding Tolerance' entered in that screen then the Payment record status is amended to 'Fully Applied'. The actual value of the Rounded amount is 'posted' to this Cost Centre,

Discounts Given: (Methods 2 & 3 only) If a Discount Amount is entered during Payment Matching (Example: 'Prompt Payment' discount) then the value of this discount is 'posted' to this Cost Centre.

Undeposited Funds: (Methods 2 & 3 only) Whenever a Bank Deposit Slip is raised (Status is 'Pending') the included payments are 'posted' to this Cost Centre.

POS End of Day Variance: Whenever a 'Z' Report is printed from the End Of Day processing in the Point of Sales function than if the Till Balance is at variance to the expected balance then the difference is posted to this Cost Centre

POS Shop Expenses: Whenever a Cash withdrawal or deposit is made within the POS function then the amount Withdrawn/Deposited is held in this Cost Centre

Exchange Loss or Gain: (Methods 2 & 3 only when Multi Currency in use but being converted into Local Currency) Ostendo will calculate the appropriate FX Gain or Loss at the point of processing the Customer Payment. This is the difference between the Invoice Exchange Rate Vs the Payment Exchange Rate

Assembly Cost Var: If you are using Standard Costing then the difference between the Standard Cost of the Receipt and the actual WIP Cost of the Item is posted to this Cost Centre

Payment Charge: (Methods 2 & 3 only) If a Customer Payment is recorded with a Payment Charge (eg: Credit Card Charge) you are able to post this charge to this specific Cost Centre

Points of Integration:

There are many Xero API resources available. However not all resources are part of the Ostendo – Xero integration. The affected resources are as follows:

Contacts - this is the Xero resource which holds Supplier and Customer information. Any addition or change in Supplier/Customer master records in Ostendo will be reflected in Xero except 'InActive' records.

Xero API does not allow for posting of ContactStatus = DELETED. This means that InActive Suppliers or Customers in Ostendo need to be manually set as DELETED in Xero.

The **IsSupplier** Boolean value cannot be set via Xero API – it is automatically set when an accounts payable invoice is generated against the contact. This means Suppliers exported from Ostendo into Xero will initially have the **IsSupplier** set to "false".

The **IsCustomer** Boolean value cannot be set via Xero API – it is automatically set when an accounts receivable invoice is generated against the contact. This means Customers exported from Ostendo into Xero will initially have the **IsCustomer** set to "false".

Manual Journals – all journals except Invoice Payment and Invoice Deposit, are posted to this resource in Xero.

There are a few accounts that you can't use when entering manual journals in Xero. These include system accounts (accounts receivable, accounts payable, retained earnings and Realised Currency Gains) and bank accounts. You will receive a 400 validation error if you try and use these reserved accounts.

Invoices – this resource caters to both Sales Invoices (Type= ACCREC) and Purchase Invoices (Type= ACCPAY). Sales Invoice transactions and Purchase Invoice transactions are posted to Xero as AUTHORISED invoice transactions.

If AR Style "Post Invoices and Payments as Journals" is selected, then sales invoices and payments will be posted as manual journals to Xero.

Credit Notes - this resource caters to both Sales Credit Notes (Type= ACCRECCREDIT) and Purchase Credit Notes (Type= ACCPAYCREDIT). Credit Notes are posted to Xero as AUTHORISED credit note transactions.

Payments – Invoice Payment and Invoice Deposit journals are posted to Payments resource in Xero. Only the Debit side of the journal is posted.

Note: Payment Discounts are posted to Xero as Credit Notes and applied to the associated Invoices.

Customer Payments entered directly into Xero (if "No External Payments Returned" is not ticked in System Settings) will be pulled back into Ostendo and Customer Payment records will be created for the matching invoices. However no

financial transactions will be created in Ostendo for such records – to avoid reposting back into Xero again. Such payment records in Ostendo will be marked as “External Payments”.

Any such Payments entered in Xero which are subsequently deleted in Xero will also trigger the deletion of the matching “External Payment” from Ostendo’s CustomerPayments table.

Note: Deletion of Payments can be done only from Xero – regardless of whether the payment was first entered in Ostendo or in Xero. When a payment is deleted in Xero, the accountinglink will check for deleted payments (during the next batch processing) and delete the corresponding payment in Ostendo.

Over-Payments & Pre-Payments - When Over-Payments or Pre-Payments are created in Xero, these will generate Payments in Ostendo marked as ‘External’.

Any allocations to sales invoices in Xero will be brought into Ostendo and applied to the corresponding invoices.

Any Refunds of overpayment/prepayment in Xero will be brought into Ostendo to reduce the PAYMENTAMOUNT in CUSTOMERPAYMENTS record accordingly.

Please note that Over-Payments/Pre-payments created in Xero can only be allocated to invoices **from within Xero**.

Sales Credit Allocations (Methods 1 & 2)

The API does not allow Ostendo receive Sales Credit Allocations to Invoices, therefore these must be manually processed in both systems in order to keep the AR Ledgers in sync.

Credit Allocation in Xero = Customer Payment Style ‘Match Credits to Invoices in Ostendo.

The process in both systems does not generate any financial entries.

All financial transactions generated in Ostendo will be summarised into the following tables:

JOURNALHEADER– updates Manual Journals or Payments in Xero

JOURNALLINES – updates Manual Journals or Payments in Xero

JOURNALINVHEADER – updates Invoices or Credit Notes in Xero

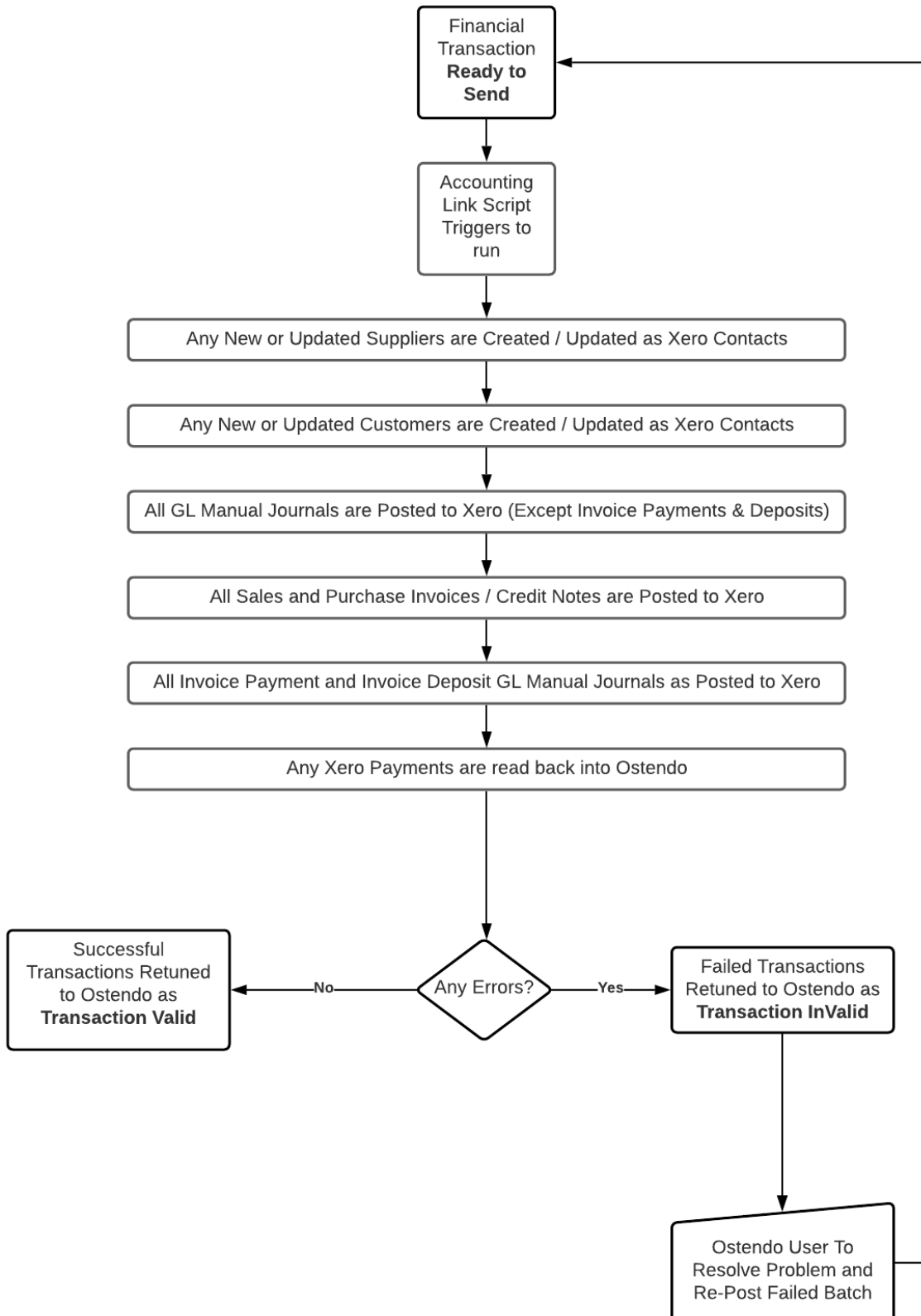
JOURNALINVLINES – updates Invoices or Credit Notes in Xero

Changes to Customer Master and Supplier Master record will create transactions in FINANCIALCUSTOMERS and FINANCIALSUPPLIERS tables respectively.

You can see a more detailed mapping of fields between Ostendo tables and Xero resources in **Appendix A**.

The Automated Posting Process:

Automated Posting Process Flow



As transaction records are added to the tables listed above, Ostendo will flag them as "Ready to Send". Ostendo will post transactions to Xero based on the frequency set in System Settings. The frequency of posting can be set to in terms of minutes or hours.

All transactions which are "Ready to Send" will be assigned a batch number and posted as one batch in the following order:

FINANCIALSUPPLIERS transactions to Xero Contacts,

FINANCIALCUSTOMERS transactions to Xero Contacts,

JOURNALHEADER and LINES transactions (except Invoice Payments and Invoice Deposits) to Xero

Manual journals

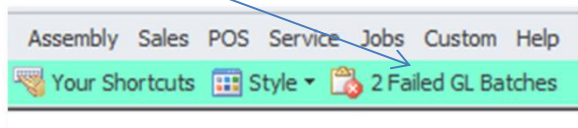
JOURNALINVHEADER and LINES transactions to Xero Invoices and Credit Notes

JOURNALHEADER and LINES for Invoice Payments and Invoice Deposits to Xero Payments.

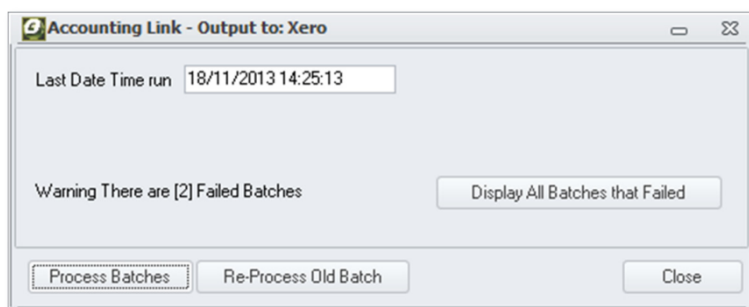
This process runs automatically in the background when there is at least one user logged in.

This process can be prevented if the "No External GL Posting" flag is ticked for ALL users of the system. This flag is found in File->System Configuration->User Security & Options->User Options tab.

User intervention is only required if there are failed batches occurring – which is indicated in the top status bar of the Ostendo main screen:



If you click on the failed batches in the status bar, you will get the following:



Click on "Display All batches that Failed" button and you will see a list of failed batches. Click on the Detail tab, and you will see the invalid transactions:

Failed Accounting Batches				
List		Detail		
Failed Records				
Applied Payments				
Date	Payment No	Debit Cost Centre	Credit Cost Centre	Failure Message
5/10/2013	39	UNAPPLIED PAY...	DEBTORS	P1-18/11/2013 14:25:22-ResponseCode: 400 Error: A validation exception occurred Document could not be found

Reviewing and correcting Failed Batches:

The following GENERAL INQUIRIES are available to review the batches and transactions:

- Inquiry – Ledger Journals
- Inquiry – Ledger Sales Invoices
- Inquiry – Ledger Purchase Invoices

Example of Ledger Journal inquiry – detail screen:

Inquiry - Ledger Journals									
List					Detail				
Journal Number	1002								
Description	Assembly Issues for Order: WO200024								
Journal Date	20/09/2013								
Type	Assembly Issues								
Debit Value	\$52.00								
Credit Value	\$52.00								
Status	Transaction Valid								
Status Message									
Source ID	WO200024								
Batch No	4								
External ID	6e3fefec-620a-43c2-96df-68c4118e90d7								
Codes Missing	<input type="checkbox"/>								
Reference No									

Journal Lines					Journal Source				
Description	Ledger Code	Cost Centre Code	Debit Value	Credit Value	Tax Code	External Tax Code	Currency Code	Exchange Rate	
Assembly Order Work in Progress	645	ASSEMBLY WIP	\$52.00	\$0.00					1
Stock Holding	635	STOCK	\$0.00	\$52.00					1

Common causes of failed batches include:

- Incorrect tax codes used (Tax code mapping not completed correctly).
- Ledger Account in Xero was not set to accept payments.
- Missing Account Codes (Cost Centre – Ledger Codes mapping incorrect or incomplete)
- The document date cannot be before the period lock date (Attempting to post a transactions to Xero dated in a closed period)

Once the errors are fixed, the batches can be re-posted by clicking on the Repost Batch and Process Batches buttons.

Appendix A: (Ostendo-Xero Data Mapping)

Suppliers

OSTENDO		Xero	
Table	FieldName	Fieldname	Resource
FINANCIALSUPPLIERS	Supplier	Name	Contacts
		IsSupplier (= true)	Contacts
		ContactStatus (= Active)	Contacts
FINANCIALSUPPLIERS	SupplierWeb	Website	Contacts
FINANCIALSUPPLIERS	SupplierEmail	EmailAddress	Contacts
FINANCIALSUPPLIERS	CurrencyCode	DefaultCurrency	Contacts
		AddressType (POBOX)	Contacts
FINANCIALSUPPLIERS	SupplierAddress1	AddressLine1	Contacts
FINANCIALSUPPLIERS	SupplierAddress2	AddressLine2	Contacts
FINANCIALSUPPLIERS	SupplierAddress3	AddressLine3	Contacts
FINANCIALSUPPLIERS	SupplierCity	City	Contacts
FINANCIALSUPPLIERS	SupplierState	Region	Contacts
FINANCIALSUPPLIERS	SupplierPostalCode	PostalCode	Contacts
FINANCIALSUPPLIERS	SupplierCountry	Country	Contacts
FINANCIALSUPPLIERS	PrimaryContact	AttentionTo	Contacts
		AddressType (STREET)	Contacts
FINANCIALSUPPLIERS	PhysicalAddress1	AddressLine1	Contacts
FINANCIALSUPPLIERS	PhysicalAddress2	AddressLine2	Contacts
FINANCIALSUPPLIERS	PhysicalAddress3	AddressLine3	Contacts
FINANCIALSUPPLIERS	PhysicalCity	City	Contacts
FINANCIALSUPPLIERS	PhysicalState	Region	Contacts
FINANCIALSUPPLIERS	PhysicalPostalCode	PostalCode	Contacts
FINANCIALSUPPLIERS	PhysicalCountry	Country	Contacts
FINANCIALSUPPLIERS	PrimaryContact	AttentionTo	Contacts
		PhoneType (FAX)	Contacts
FINANCIALSUPPLIERS	SupplierFax	PhoneNumber	Contacts
		PhoneType (MOBILE)	Contacts
FINANCIALSUPPLIERS	SupplierMobile	PhoneNumber	Contacts
		PhoneType (DEFAULT)	Contacts
FINANCIALSUPPLIERS	SupplierPhone	PhoneNumber	Contacts

Customers

OSTENDO		Xero	
Table	FieldName	Fieldname	Resource
FINANCIALCUSTOMERS	Customer	Name	Contacts
		IsCustomer (= true)	Contacts
		ContactStatus (= Active)	Contacts
FINANCIALCUSTOMERS	CustomerWeb	Website	Contacts
FINANCIALCUSTOMERS	CustomerEmail	EmailAddress	Contacts
FINANCIALCUSTOMERS	CurrencyCode	DefaultCurrency	Contacts
		AddressType (POBOX)	Contacts
FINANCIALCUSTOMERS	CustomerAddress1	AddressLine1	Contacts
FINANCIALCUSTOMERS	CustomerAddress2	AddressLine2	Contacts
FINANCIALCUSTOMERS	CustomerAddress3	AddressLine3	Contacts
FINANCIALCUSTOMERS	CustomerCity	City	Contacts
FINANCIALCUSTOMERS	CustomerState	Region	Contacts
FINANCIALCUSTOMERS	CustomerPostalCode	PostalCode	Contacts
FINANCIALCUSTOMERS	CustomerCountry	Country	Contacts
FINANCIALCUSTOMERS	PrimaryContact	AttentionTo	Contacts
		AddressType (STREET)	Contacts
FINANCIALCUSTOMERS	DeliveryAddress1	AddressLine1	Contacts
FINANCIALCUSTOMERS	DeliveryAddress2	AddressLine2	Contacts
FINANCIALCUSTOMERS	DeliveryAddress3	AddressLine3	Contacts
FINANCIALCUSTOMERS	DeliveryCity	City	Contacts
FINANCIALCUSTOMERS	DeliveryState	Region	Contacts
FINANCIALCUSTOMERS	DeliveryPostalCode	PostalCode	Contacts
FINANCIALCUSTOMERS	DeliveryCountry	Country	Contacts
FINANCIALCUSTOMERS	PrimaryContact	AttentionTo	Contacts
		PhoneType (FAX)	Contacts
FINANCIALCUSTOMERS	CustomerFax	PhoneNumber	Contacts
		PhoneType (MOBILE)	Contacts
FINANCIALCUSTOMERS	CustomerMobile	PhoneNumber	Contacts
		PhoneType (DEFAULT)	Contacts
FINANCIALCUSTOMERS	CustomerPhone	PhoneNumber	Contacts

JOURNALS (except Invoice Payments and Invoice Deposits)

OSTENDO		Xero	
Table	FieldName	Fieldname	Resource
JOURNALHEADER	JournalDescription	Narration	ManualJournals
JOURNALHEADER	JournalDate	Date	ManualJournals
		Status (= POSTED)	ManualJournals
		JournalLine:	ManualJournals
JOURNALLINES	LineDescription	Description	ManualJournals
JOURNALLINES	LedgerCode	AccountCode	ManualJournals
JOURNALLINES	ExternalTaxCode	TaxType	ManualJournals
JOURNALLINES	DebitValue / CreditValue	LineAmount	ManualJournals
JOURNALLINES	FINANCIALCATEGORY	Tracking Category	ManualJournals
JOURNALLINES	FINANCIALCATEGORY	Tracking Option	ManualJournals

Journals - Invoice Payment and Invoice Deposit

OSTENDO		Xero	
Table	FieldName	Fieldname	Resource
		Invoice	Payments
JOURNALHEADER	ReferenceNumber	InvoiceNumber	Payments
		Account	Payments
JOURNALLINES	LedgerCode	Code	Payments
JOURNALHEADER	JournalDate	Date	Payments
JOURNALLINES	ExchangeRate	CurrencyRate	Payments
JOURNALLINES	DebitValue	Amount	Payments
JOURNALHEADER	JournalID [JournalNumber]	Reference	Payments

Invoices

OSTENDO		Xero	
Table	FieldName	Fieldname	Resource
JOURNALINVHEADER	InvoiceNettTotal > 0	Invoice	Invoices
JOURNALINVHEADER	InvoiceType (Purchase)	Type (= ACCPAY)	Invoices
JOURNALINVHEADER	InvoiceNumber (CompanyInvnumber)	InvoiceNumber	Invoices
JOURNALINVHEADER	InvoiceType (Sales)	Type (= ACCREC)	Invoices
JOURNALINVHEADER	InvoiceNumber	InvoiceNumber	Invoices
JOURNALINVHEADER	InvoiceReference	Reference	Invoices
JOURNALINVHEADER	InvoiceDueDate	DueDate	Invoices
JOURNALINVHEADER	InvoiceNettTotal	SubTotal	Invoices
JOURNALINVHEADER	InvoiceTaxTotal	TotalTax	Invoices
JOURNALINVHEADER	InvoiceTotal	Total	Invoices
		Contact	Invoices
JOURNALINVHEADER	CompanyName	Name	Invoices
JOURNALINVHEADER	InvoiceDate	Date	Invoices
		Status (AUTHORISED)	Invoices
		LineAmountTypes (Exclusive)	Invoices
JOURNALINVHEADER	CurrencyCode	CurrencyCode	Invoices
JOURNALINVHEADER	Exchangerate	CurrencyRate	Invoices
		LineItem	Invoices
JOURNALINVLINES	ExternalTaxCode	TaxType	Invoices
JOURNALINVHEADER, JOURNALINVLINES	ExchangeRate, InvoiceQty, LineCode, LineDescription	Description	Invoices
		Quantity (= 1)	Invoices
JOURNALINVLINES	DebitLedgerCode / CreditLedgerCode	AccountCode	Invoices
JOURNALINVLINES	ExtendedNettPrice	LineAmount	Invoices
JOURNALINVLINES	ExtendedTax	TaxAmount	Invoices
JOURNALINVLINES	FINANCIALCATEGORY	Tracking Category	Invoices
JOURNALINVLINES	FINANCIALCATEGORY	Tracking Option	Invoices

Credit Notes

OSTENDO		Xero	
Table	FieldName	Fieldname	Resource
JOURNALINVHEADER	InvoiceNettTotal < 0	CreditNote	CreditNotes
JOURNALINVHEADER	InvoiceType (Purchase)	Type (= ACCPAYCREDIT)	CreditNotes
JOURNALINVHEADER	InvoiceNumber (CompanyInvnumber)	CreditNoteNumber	CreditNotes
JOURNALINVHEADER	InvoiceReference	Reference	CreditNotes
JOURNALINVHEADER	InvoiceType (Sales)	Type (= ACCRECCREDIT)	CreditNotes
JOURNALINVHEADER	InvoiceNumber	CreditNoteNumber	CreditNotes
JOURNALINVHEADER	InvoiceReference	Reference	CreditNotes
JOURNALINVHEADER	InvoiceDueDate	FullyPaidOnDate	CreditNotes
JOURNALINVHEADER	InvoiceNettTotal	SubTotal	CreditNotes
JOURNALINVHEADER	InvoiceTaxTotal	TotalTax	CreditNotes
JOURNALINVHEADER	InvoiceTotal	Total	CreditNotes
		Contact	CreditNotes
JOURNALINVHEADER	CompanyName	Name	CreditNotes
JOURNALINVHEADER	InvoiceDate	Date	CreditNotes
		Status (AUTHORISED)	CreditNotes
		LineAmountTypes (Exclusive)	CreditNotes
JOURNALINVHEADER	CurrencyCode	CurrencyCode	CreditNotes
JOURNALINVHEADER	Exchangerate	CurrencyRate	CreditNotes
		LineItem	CreditNotes
JOURNALINVLINES	ExternalTaxCode	TaxType	CreditNotes
JOURNALINVHEADER, JOURNALINVLINES	ExchangeRate, InvoiceQty, LineCode, LineDescription	Description	CreditNotes
		Quantity (= 1)	CreditNotes
JOURNALINVLINES	DebitLedgerCode / CreditLedgerCode	AccountCode	CreditNotes
JOURNALINVLINES	ExtendedNettPrice (-)	LineAmount	CreditNotes
JOURNALINVLINES	ExtendedTax (-)	TaxAmount	CreditNotes