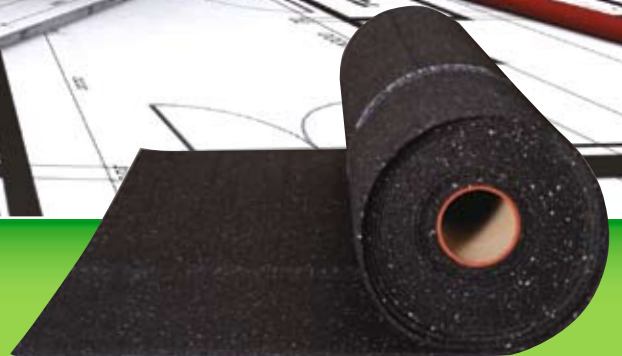


# QT<sup>TM</sup>

SOUND INSULATION

*Tested. Proven. Guaranteed.*

## Superior Impact Sound Control



[www.qtsoundcontrol.com](http://www.qtsoundcontrol.com)



***Tested. Proven. Guaranteed.***

## Our Green Story

At ECORE International, manufacturer of QT sound insulation, we are committed to operating our businesses and facilities in a manner that uses resources wisely while protecting the quality of our environment and the health and safety of our associates, families, and community. We inherently use environmental processes of reducing, reusing, and recycling to produce our QT sound insulation products. This is achieved by reducing the amount of scrap tires that are discarded in America's landfills, reusing scrap rubber from our production process to minimize waste, and recycling and converting scrap tires into viable and durable products.

As North America's largest user of scrap tire rubber, we salvage more than four million tires annually from landfills and convert them into product solutions for industrial and architectural applications. We make sustainable production and products our top priority, as evident by our active membership with the U.S. Green Building Council and other environmentally focused organizations.

Made from 92% recycled tire rubber, the QT brand of products provides an environmentally responsible solution for quality sound control. QT products support the use and reuse of industrial and post consumer waste. They are designed to meet the stringent criteria required to earn points in 2 out of the 6 categories of LEED-NC (Leadership in Energy and Environmental Design). Based on these criteria, QT products can potentially assist architects and engineers in acquiring up to 5 points toward a project's LEED certification. Additionally, QT products have passed the strictest indoor air quality tests and assurance methods for low emissions of total volatile organic compounds (VOCs).





## The most tested sound control product in the industry

QT Sound Insulation is a line of high quality sound control underlayment, manufactured in the USA by ECORE International, a leading innovator in recycled products technology. QT is made from 92% recycled rubber and has been tested in over 200 different laboratory and field test assemblies. QT has been proven to repeatedly perform as engineered to meet design requirements. The product and engineering support that is provided by QT Sound Insulation guarantees that QT will work as specified, every time.

The QT product line includes **QTscu** and **QTrbm**, resilient sound control underlayment and a dimpled, resilient base mat. QTscu is used directly under floor finishes, yielding exceptional results even under hard surface flooring and over concrete and wood joist construction. QTrbm can be applied under gypsum or full weight concrete to produce some of the thinnest sound rated systems in the industry.

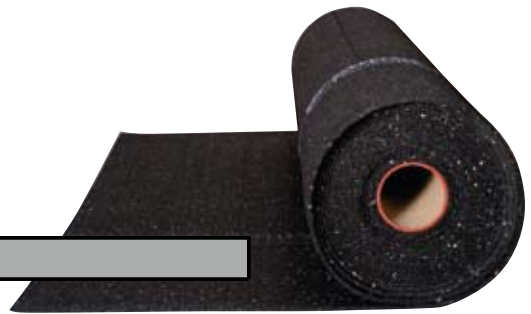
- Compatible with a direct application of floor finishes including ceramic tile, stone, laminate, hardwood, vinyl, and carpet
- Anti-fracture crack bridging properties
- For multi-family housing, high rises, single family homes, or office buildings
- Outperforms cork, felt, plastic, and roofing membranes
- Lifetime warranty against product defects and workmanship
- Engineered to provide the highest IIC rating improvement as measured by ASTM E2179
- Results are backed by over 200 independent laboratory and field tests in a variety of floor-ceiling assemblies per ASTM E492, E90 and E1007
- Meets all established indoor air quality standards
- Meets and exceeds tough building code requirements while adding less than 1/2" of floor height





# QTscu

Patented Product

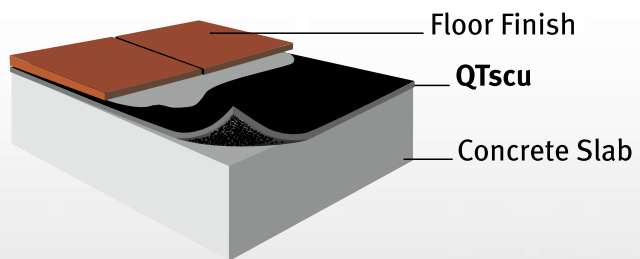


QT sound control underlayment (scu) is a flat, resilient underlayment used directly under all floor finishes, yielding exceptional results even under hard surface flooring and over concrete and wood joist construction.

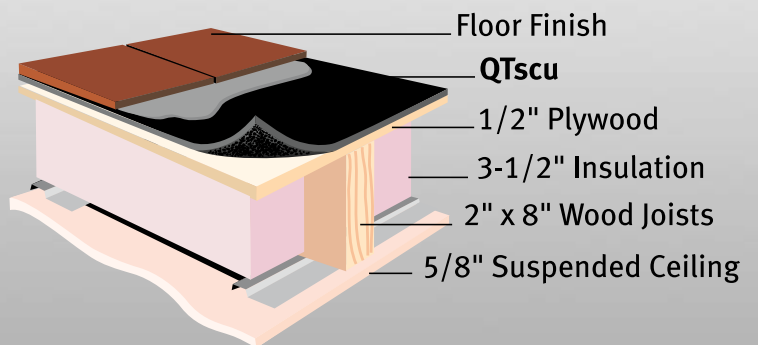
### Performance Benefits:

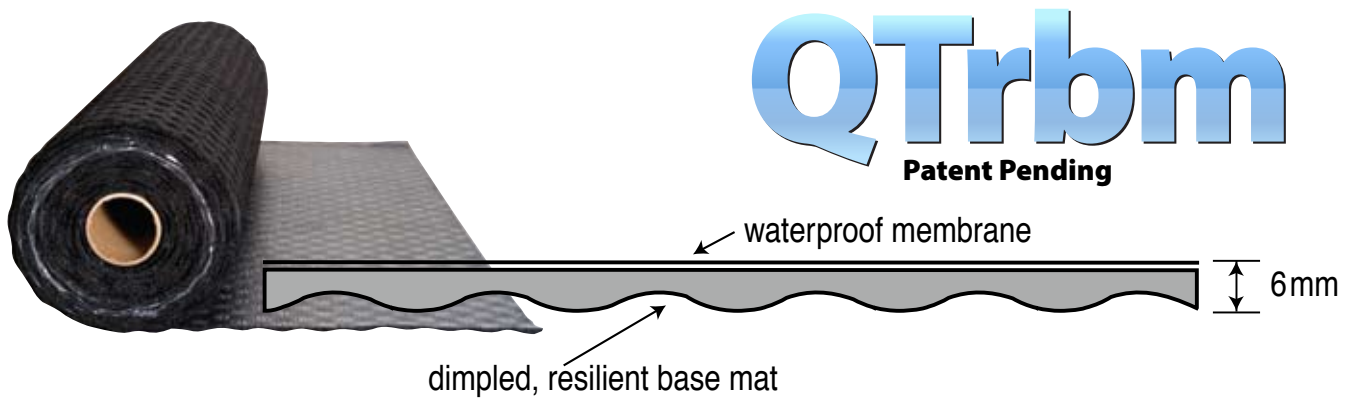
- Can thin-set tile and stone directly to the product per ASTM C627
- 5 mm thickness QT performs better than 1/2" cork per ASTM E2179
- Compatible with all floor finishes
- Fast installation
- Available in 48" wide rolls and a variety of thicknesses
- Waterproof membrane and peel-and-stick options available
- Crack isolation membrane protects ceramic tile, porcelain, and stone from substrate cracks
- Rated light commercial by the Tile Council of North America

### Single Slab Concrete



### Wood Joist



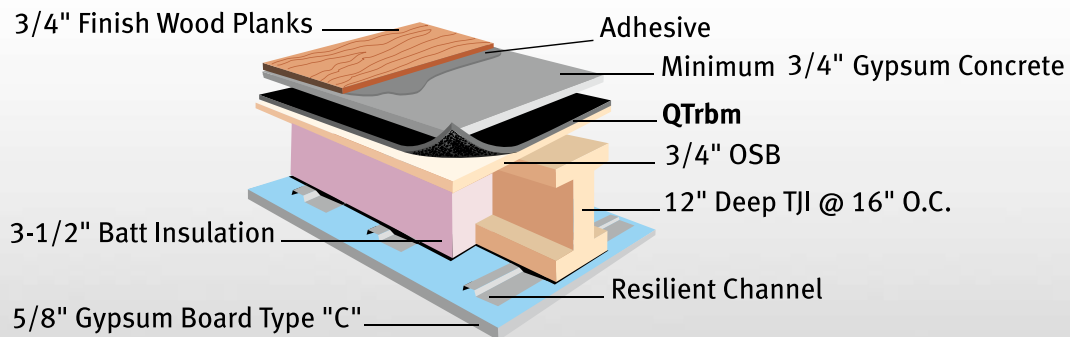


QT resilient base mat (rbm) is a dimpled, resilient base mat that can be applied under gypsum or full weight concrete to produce some of the thinnest sound rated systems in the industry.

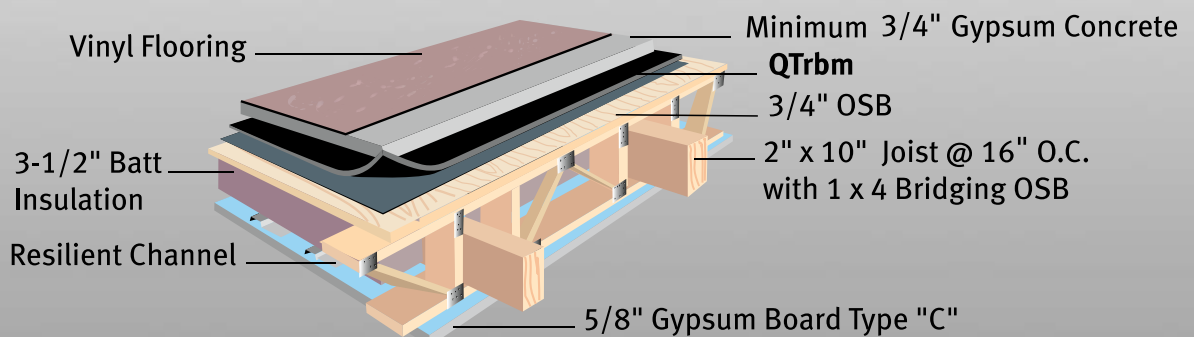
**Performance Benefits:**

- Sound rated system under 1" total thickness
- Minimum 3/4" pour meets sound rating criteria and rated light commercial by the Tile Council of North America
- Approved in over 82 UL floor/ceiling assemblies and is system rated for commercial and residential use per ASTM C627
- Easy installation- just roll out, tape, and go
- Durable enough to withstand movement of heavy equipment on surface
- Very low compression set versus tangled plastic mats
- Available in 48" and 54" wide rolls and 4 standard thicknesses- 6mm, 10mm, 17mm, and 25mm

**TJI®-type Construction**

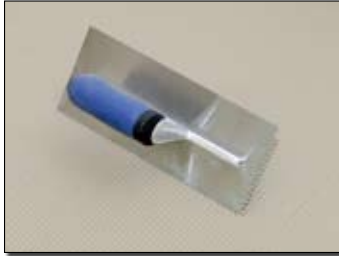


**Open Web Truss Floor**



# QT Installation Overview

## QTscu



**STEP 1:**  
Apply approved thinset to the subfloor using 1/4" x 3/16" v-notch trowel.



**STEP 2:**  
Unroll the QTscu into the thin set.



**STEP 3:**  
Roll the QT with a 35 lb. linoleum roller.



**STEP 4:**  
Apply approved thinset to the QT using 1/4" x 1/4" x 1/4" v-notch trowel.



**STEP 5:**  
Lay ceramic or porcelain tiles and then grout.

## QTrbm



**STEP 1:**  
After installing an isolation perimeter strip, QTrbm is easily rolled onto a smooth surface. It lays flat and will not slip or move.



**STEP 2:**  
Duct tape the joints.



**NOTE:**  
QTrbm is durable enough for foot traffic, pouring equipment, and materials.



**STEP 3:**  
Pour a minimum 1" gypsum concrete surface that meets required sound ratings and passes structural requirements.



**STEP 4:**  
Prepare gypsum concrete surface for floor finish.

## QT Test Results

Floor Structure	Ceiling	Finish	QTrbm	QTscu	IIC	STC
8" CONCRETE SLAB	NO	TILE		QT4005	50	
8" CONCRETE SLAB	NO	TILE		QT4010	53	54
8" CONCRETE SLAB	NO	TILE		QT4012	55	59
8" CONCRETE SLAB	NO	TILE		QT4012	56-F	
8" CONCRETE SLAB	NO	WOOD		QT4002	54	53
8" CONCRETE SLAB	YES	WOOD		QT4002	71	72
8" CONCRETE SLAB	NO	TILE	QT3010-5W		60-F	
8" CONCRETE SLAB	NO	TILE	QT3017-8W		58-F	
7" CONCRETE SLAB	NO	TILE		QT4005	51-F	
7" CONCRETE SLAB	NO	WOOD		QT4005	58-F	
HAMBRO D500	YES	TILE		QT5015	58	61
HAMBRO D500	YES	WOOD		QT5015	58	
HAMBRO D500	YES	WOOD		QT4010	51	54
OPEN-WEB TRUSS	YES	TILE		QT4006	53	55
OPEN-WEB TRUSS	YES	TILE	QT3006-3W +	QT4005	56	55
OPEN-WEB TRUSS	YES	TILE	QT3006-3W		56-F	
OPEN-WEB TRUSS	YES	TILE	QT3010-5W		57-F	
OPEN-WEB TRUSS	YES	BARE	NONE		44-F	
OPEN-WEB TRUSS	YES	VINYL	QT3010-5W +	QT4005	56-F	
OPEN-WEB TRUSS	YES	TILE	QT3010-5W +	QT4005	58-F	
OPEN-WEB TRUSS	YES	WOOD	QT3010-5W +	QT4005	67-F	
OPEN-WEB TRUSS	YES	TILE	NO GYPSUM CONCRETE	QT4010 x 2 LAYERS	54-F	
OPEN-WEB TRUSS	YES	CARPET	NO GYPSUM CONCRETE	QT4010 x 2 LAYERS	67-F	
TJI-TYPE	YES	TILE	QT3010-5W +	QT4002	54	57
TJI-TYPE	YES	TILE	QT3006-3W		53	
TJI-TYPE	YES	VINYL	QT3006-3W +	QT4005	57	
TJI-TYPE	YES	TILE	QT3006-3W +	QT4002	53	54
TJI-TYPE	YES	TILE	QT3006-3W +	QT4005	53	57
TJI-TYPE	YES	OAK	QT3006-3W		54	
TJI-TYPE	YES	VINYL	NONE		39-F	
TJI-TYPE	YES	VINYL	QT3006-3W		53-F	
TJI-TYPE	YES	TILE	QT3006-3W +	QT4005	55-F	
TJI-TYPE	YES	VINYL	QT3006-3W +	QT4005	56-F	
TJI-TYPE	YES	WOOD	QT3006-3W +	QT4005	64-F	
STEEL BAR JOIST	YES	TILE		QT5015	56-F	
STEEL BAR JOIST	YES	TILE	QT3017-8W		58-F	
STEEL BAR JOIST	YES	TILE	QT3025-7W		61-F	

## Product Technical Data

	Product	Thickness	Roll Dimensions	Weight/Roll	Type A Hardness (ASTM D2240)
QTscu	QT4002	2mm (1/8")	48" x 75'	90 lbs.	40 durometer
	QT4005	5mm (1/4")	48" x 30'	90 lbs.	40 durometer
	QT4010	10mm (3/8")	48" x 15'	90 lbs.	40 durometer
	QT4012	12mm (1/2")	48" x 15'	108 lbs.	40 durometer
	QT5015	15mm (5/8")	48" x 15'	135 lbs.	50 durometer
QTrbm	QT3006-3W	6mm (1/4")	54" x 30'	90 lbs.	30 durometer
	QT3010-5W	10mm (3/8")	54" x 30'	120 lbs.	30 durometer
	QT3017-8W	17mm (3/4")	54" x 30'	203 lbs.	30 durometer
	QT3025-7W	25mm (1.0")	48" x 30'	290 lbs.	30 durometer

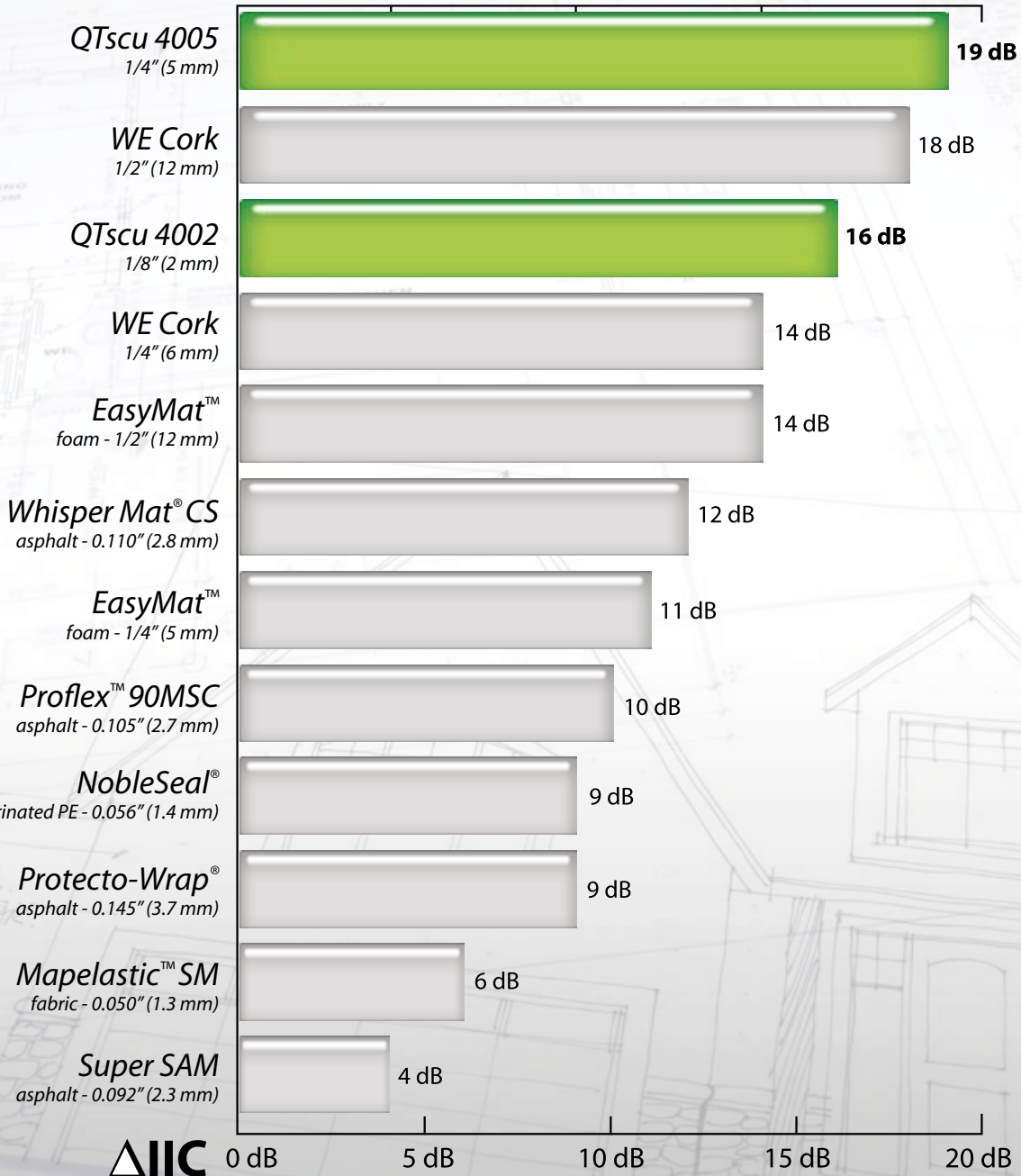
Additional test results available upon request. QTscu is listed with the ICC evaluation services report #ER-6064. Both QTscu and QTrbm are UL listed products.



# EVALUATION OF IMPROVEMENT CAUSED BY THE RESILIENT UNDERLAYMENT

TESTED TO ASTM E2179 • TESTED WITH TILE FLOOR COVERING

**BRAND AND THICKNESS**



For more information and samples, call 1-866-326-5712  
or visit [www.qtsoundcontrol.com](http://www.qtsoundcontrol.com).

