



Villeroy & Boch

1748

# OUTDOOR TILES

*for a stylish look all round*





Today, one does not have to be indoors to feel good and relax at home, for on warmer days in particular, life moves outside – where people can spend the evening enjoying the day's last rays of sunshine surrounded by nature.

Well-designed outdoor areas can significantly increase the quality of both living areas and commercial spaces, possibly introducing pleasant new uses in the process. Yet another reason why it is best to design them like indoor areas, giving preference to ceramics, an aesthetic and extremely practical choice.

The special OUTDOOR TILES from Villeroy & Boch are brand-name products that are available in a variety of designs and which are extremely durable and robust.

They can be laid on a variety of substrates and are an elegant alternative for enhancing life outdoors.

The OUTDOOR TILES collection offers a variety of advantages compared with other outdoor surfaces:



**STYLE:**

Uniform appearance of living areas and balconies, terraces, pathways and entrances.



**MATERIAL:**

vilbostone, high-quality, scratch- and abrasion-proof 20 mm thick brand porcelain stoneware tiles.



**FROST-PROOF:**

Frost-proof and weather-resistant when laid professionally.



**COLOUR-FAST:**

No changes in colour as a result of sunlight.



**EASY TO CLEAN:**

Surface-sealed in the factory with vilbostoneplus to prevent stains.



**NON-SLIP:**

Non-slip class R11 for outdoor areas.



**RECTIFIED EDGES:**

Millimetre-precision cut for laying with narrow joints.









## BERNINA OUTDOOR

– *For a safe footing*

Both natural and modern: it is a combination that allows BERNINA OUTDOOR to blend beautifully with numerous furnishing styles. The gentle glimmer of its surfaces is inspired by quartzite, giving it a stylish, natural appearance.

The 2 cm thick vilbostone porcelain stoneware tiles in the 60 x 60 cm format boast excellent R11 slip resistance, meaning they are suitable for lending a touch of elegance and firm footing to outdoor areas as well.

These high-quality tiles are also equipped with vilbostone**plus**, a surface finish applied at the factory that makes these slip-resistant tiles easy to care for right from the start.

BERNINA OUTDOOR is available in beige, grey and greige – three shades modelled on natural tones that harmonise well with a variety of environments.

Their 2 cm thickness makes these tiles perfect for carports and pavements, for example.





## LODGE OUTDOOR

— *Naturally connecting indoors and out*

A range that exudes warmth and comfort — LODGE OUTDOOR engenders a desire for living in the open air.

Robust *vilbostone* porcelain stoneware tiles in a high-quality wooden look are a timelessly modern classic.

Their authentic wood grain creates a vibrant appearance that offers appealing alternatives in grey, greige and brown. As a result, the range is perfect for creating an attractive living area outdoors.









## MY EARTH OUTDOOR

### – *Design freedom*

No two stones on this Earth are exactly alike, and MY EARTH OUTDOOR was developed with this sense of uniqueness in mind. Each tile is a variation of a simple stone structure with a character all its own. The result: individual surface appearances that are able to fascinate time and again.

The range is practically predestined for use in large areas, such as those found between residential units. Easy-care *vilbostone* porcelain stoneware tiles are light-fast and retain their authentic look even when subjected to heavy use.

With its natural appearance, the range is used in both private and public areas. The colour variants light beige, beige and grey, each in a multi-coloured version, are available – colours whose facets are ever-changing, and which even nature is unable to top.

## X-PLANE OUTDOOR

– *A welcoming outdoors*

Cement looks are all the rage - not only for wall and floor coverings, but for all manner of home accessories as well. With their puristic look and timelessly modern designs, they are true all-rounders for contemporary styles and are destined to establish a lasting presence in modern living spaces.

The finely structured surfaces of X-PLANE OUTDOOR offer a popular yet discreet urban look. Available in the colours beige, grey and anthracite, they are equally at home in architectural applications and private living areas.

In addition to the wide range of possibilities offered by this range for interiors in gastronomy and a variety of private settings, its qualities are also appreciated in outdoor areas.

The *vilbostone* porcelain stoneware tiles harmonise wonderfully with steel and concrete, and are also ideal as a modern counterpoint to all natural materials.





## BERNINA OUTDOOR

60 x 60 cm  
beige



90 120 20 R11



grey



90 120 20 R11



greige



90 120 20 R11



## LODGE OUTDOOR

60 x 60 cm  
grey



90 120 20 R11



greige



90 120 20 R11



brown



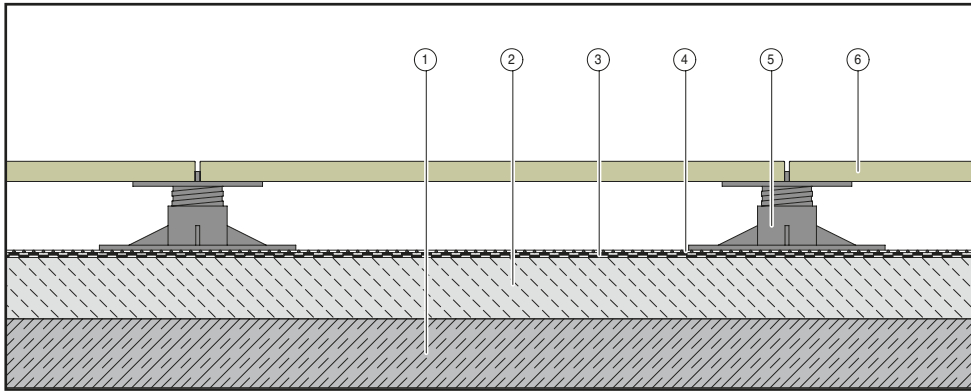
90 120 20 R11





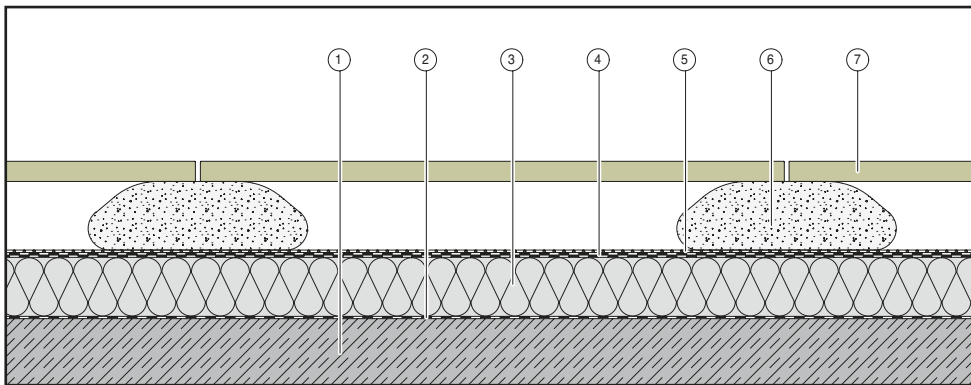
# INSTALLATION METHODS

## Laying on pile foundations or mortar bags



Loose laying on pile foundations on underground floor slab or concrete cantilever slab

- ① Uncovered floor
- ② Sloping screed
- ③ Seal in accordance with DIN 18195
- ④ Protective mat
- ⑤ Pile foundations
- ⑥ OUTDOOR TILES



Loose laying on mortar bags on thermally-insulated, flat-roof construction

- ① Uncovered floor
- ② Vapour barrier
- ③ Tapered insulation
- ④ Seal in accordance with DIN 18195
- ⑤ Separation layer / Protective mat
- ⑥ Mortar bags
- ⑦ OUTDOOR TILES

### Advantages:

- Suitable for laying on top of existing coverings if the resulting overall height meets requirements
- Both laying variants can be performed quickly
- When laid on pile foundations or mortar bags, replacing individual OUTDOOR TILES is quite straightforward
- This also allows for the concealment of cables, pipes etc. under the structure

### Laying the tiles:

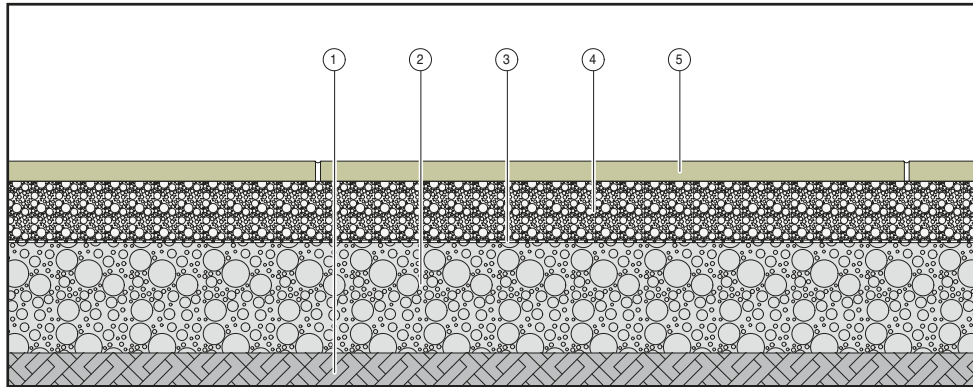
- Prepare the substrate with a slope of at least 2% and seal in accordance with DIN 18195
- In order to protect against mechanical impairment, a protective mat should also be installed
- A vapour barrier is required above heated rooms
- Place the pile foundations (with integrated spacers) or mortar bags in the desired grid and align horizontally
- Lay the OUTDOOR TILES by placing them around the spacers with approx. 5 mm wide joints
- If higher loads are expected, it is recommended that support also be provided beneath the centre of each tile





# INSTALLATION METHODS

## Laying on gravel beds



Loose laying on gravel bed

- ① Natural soil
- ② Rough gravel support
- ③ Water-permeable covering
- ④ Gravel bed
- ⑤ OUTDOOR TILES

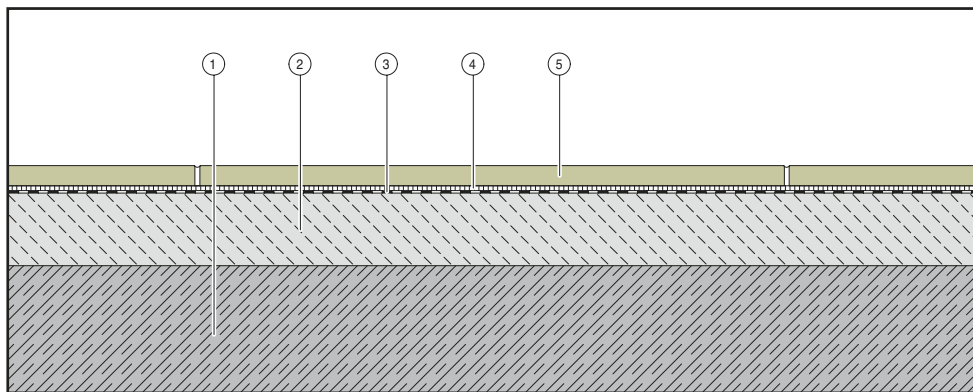
### Advantages:

- Suitable for accessible ground-level terraces
- It is possible to simply lay the tiles on concrete slabs or base plates, or on natural, load-bearing substrates
- When laid on gravel beds, replacing individual tiles is quite straightforward

### Laying on natural soil:

- Prepare the substrate with a slope of at least 2 % and ensure that it is sufficiently compacted
- The 10 - 30 cm thick mineral supporting layer, comprising mixed gravel, for example, should have a grain size of approx. 0/45 to 0/56 mm
- Application of a water-permeable covering is required
- Create a 3 - 5 cm thick gravel bed that is able to drain
- Lay the OUTDOOR TILES with approx. 5 mm wide joints, check for unevenness and level/shift if necessary
- Fill joints with water-permeable joint sand

## Laying on cement screed



Fixed laying in a mortar bed on underground floor slab or concrete cantilever slab

- ① Floor slab
- ② Sloping screed
- ③ Composite seal
- ④ Mortar bed
- ⑤ OUTDOOR TILES

### Advantages:

- Suitable for terraces and balconies with low overall heights
- Harmonises well with similar indoor floor coverings

### Laying the tiles:

- Prepare the substrate with a slope of at least 2% and seal in accordance with the ZDB leaflet “Composite seals”
- If necessary, apply an additional levelling coat in the event that the deviations in height are too great
- Lay the tiles with approx. 5 mm wide joints in a joint-coordinated pattern (cross joints) using a hydraulically setting thin-bed mortar (Group C2 S2)
- Carry out jointing with hydraulic hardening joint mortar
- The space between the settlement joints in a width of approx. 5 mm can, depending on the expected thermal expansion pursuant to the ZDB flyer, be between 2 and 5 m.



Floor tiles: MY EARTH OUTDOOR grey multicolour on gravel



Floor tiles: MY EARTH OUTDOOR grey multicolour on cement screed

# SLIP RESISTANCE

## Slip resistance of floor tiles



The EU Construction Products Regulation No. 305/2011 requires floor coverings to be safe to use. This imposes the observance of special requirements pertaining to slip resistance in areas where a danger of accidents is to be assumed. The corresponding standards were drawn up by the Committee for workplaces (ASTA) and published in form of technical regulations.

These standards include requirements pertaining to slip resistance - leaflet "ASR A1.5/1,2 - Technical Regulations for workplaces - Floors" (previously BGR 181 for commercial areas) and, for barefoot areas, leaflet "DGUV Information 207-006 - Floor coverings for wet barefoot areas" (previously BGI/GUV-I 8527, updated October 2010), published by the German Statutory Accident Insurance (DGUV).

Slip-resistant coverings in publicly accessible areas are distinguished according to those that are walked over barefoot or in footwear. No regulations apply as yet in the area of private use, e.g. private bathrooms or kitchens.

The requirements stipulated by the slip resistance are defined in the regulations mentioned below.

With our slip-resistant tiles, you will find the symbols

-  slip resistance in commercial areas,
-  slip resistance in barefoot areas

and information about the relevant classification groups.

## Slip-resistance properties in commercial applications

### Responsible institutions:

Federal Institute for Occupational Health and Safety, Friedrich-Henkel-Weg 1-25, D-44149 Dortmund - www.baua.de

Main Association of Employers' Liability Insurance Associations, Alte Heerstraße 111, D-53757 Sankt Augustin - www.dguv.de

### Area of application:

Floors in work rooms and work areas where there is a risk of slipping

### Regulations:

„BGV Professional Association regulations for occupational safety and health“ (Published by: Main Association of Employers' Liability Insurance Associations) Leaflet „ASR A1.5/1,2 - Technical Regulations for workplaces - Floors“ (Published by: Federal Institute for Occupational Health and Safety, Committee for workplaces - ASTA)

### Test method:

DIN 51130 - Testing of floor coverings; determination of slip resistance; work rooms and work areas subject to higher risk of slipping.

### Walking method:

inclined plane

### Assessment groups:

	angle of inclination	
	Lower limit value	Upper limit value
<b>R9</b>	6°	10°
<b>R10</b>	> 10°	19°
<b>R11</b>	> 19°	27°
<b>R12</b>	> 27°	35°
<b>R13</b>	> 35°	



<b>R9:</b> 6° – 10°	<b>R10:</b> 10° – 19°	<b>R11:</b> 19° – 27°	<b>R12:</b> 27° – 35°	<b>R13:</b> > 35°
------------------------	--------------------------	--------------------------	--------------------------	----------------------

The slip resistance of tiles is tested on an inclined plane with a predetermined angle of inclination and classified according to rating groups R9 to R13.

# SLIP RESISTANCE

## Slip-resistance properties in barefoot areas

### Responsible institutions:

German Statutory Accident Insurance (DGUV),  
Glinkastraße 40, D-10117 Berlin - www.dguv.de

### Area of application:

Wet barefoot areas, e.g. in swimming pools, hospitals, as well as changing rooms, washrooms and showers in sports centres and workplaces for which the statutory accident insurance agencies are responsible.

### Regulations:

Leaflet „DGUV Information 207-006 - Floor coverings for wet barefoot areas“ (previously BGI/GUV-I 8527, updated version of October 2010)

Published by: German Statutory Accident Insurance (DGUV)

### Test method:




DIN 51097; Testing of floor coverings; determination of slip-resistance; barefoot areas exposed to wet.

### Walking method:

sloping plane

The slip resistance of tiles is tested on an inclined plane with a predetermined angle of inclination and classified according to rating groups A to C.

### Classification groups and areas of application:

Classification group	Lower limit value	Upper limit value	Areas
<b>A</b> 	12°	18°	Barefoot hallways (mainly dry) Individual and group changing rooms with lockers Pool floors in the non-swimmer areas, where the water level exceeds 80 cm Sauna and relaxation areas (mainly dry)
<b>B</b> 	> 18°	24°	barefoot hallways, if not classified in A Showers Area surrounding the disinfectant sprayers Pool surrounds Pool floor in the non-swimmer areas, where the water level is less than 80 cm Pool floor in the non-swimmer areas in the tide effect pool Lift slab floors Paddling pools Steps and ladders outside the pool area Accessible surfaces of diving platforms and diving board installations which are not allocated to C. Sauna and relaxation area, provided they are not assigned to A
<b>C</b> 	> 24°		Steps and ladders leading into the water Stairways leading to diving boards and water slides Surfaces of diving platforms and diving boards in the length which is reserved for the diver (the slip-resistant surface of the diving platforms and diving boards must lead around the front edge where it is gripped by users' hands and toes) Foot basins Inclined pool borders

# CLEANING AND CARE

## General

On account of their properties, tiles are considered to be easy to clean. The cleaning methods and cleaning agents must, however, be adapted to the type of floor and local conditions.

It should be noted that hydrofluoric acid and related substances are able to attack or destroy the surface of porcelain stoneware tiles.

**Consequently, no cleaning agents containing hydrofluoric acid are to be used!**



***vilbostone***  
Porcelain stoneware

*vilbostone* porcelain stoneware permits a wealth of different surface designs featuring unusual colour and sheen effects.

*vilbostone* porcelain stoneware is available both glazed and unglazed, with a matt, polished, rough-polished or relief surface finish and in various classes of slip resistance.



***vilbostoneplus***

Unglazed *vilbostone* porcelain stoneware with a matt or rough-polished surface finish have the **vilbostoneplus** seal, which renders the tiles particularly resistant to dirt and stains. During the manufacturing process, the structure of the tile surface is sealed in order to further increase the tiles' resistance to staining and dirt, as a result of which subsequent treatment with impregnating agents is no longer necessary.

## Cleaning

Final cleaning after tiling / Basic cleaning	Product and dosage	Cleaning equipment
Loose dirt	-	Broom and vacuum cleaner
Cement film, mineral soiling, such as limescale deposits, soap residue	Acidic cleaner (available from specialist retailers)	Sponge, scrubbing brush, brush, cloth, microfibre cloth
Grease, oils, waxes, cosmetics, shoe marks	Alkaline cleaner (available from specialist retailers)	Sponge, scrubbing brush, brush, cloth, microfibre cloth
Routine cleaning		
Normal dirt, such as dust, light dirt, street dirt	Neutral cleaning agents (available from specialist retailers)	Broom and vacuum cleaner Sponge, scrubbing brush, brush, cloth, microfibre cloth

Please note: All of the information we provide about cleaning, care and removing stains from ceramic tiles is based on the latest knowledge and material research. It is, however, of a general nature and cannot cover every single eventuality. Therefore, please observe the instructions provided by the cleaning agent manufacturer.

## **Project planning – Technology and Design**

Take advantage of the technical and planning experience of a team with worldwide operations.



V & B Fliesen GmbH

Project planning - Technology and Design

Marco Warschburger

Rotensteiner Weg

D-66663 Merzig

Tel.: +49 (0) 6864 81 - 3245

Fax: +49 (0) 6864 81 - 3592

Email: [objektplanung@vb-fliesen.com](mailto:objektplanung@vb-fliesen.com)

## **Technical advice**

by email and phone

- Product properties
- Usability
- Sealing
- Slip resistance
- High-stress floors
- Fully accessible building
- Norms & guidelines

## **Planning support**

provided by our own architects and interior designers

- Design suggestions
- Installation plans
- Detail drawings
- Bill of quantities
- Individual tender texts

V & B Fliesen GmbH

*Rotensteiner Weg*

*D-66663 Merzig*

*E-Mail: [info@vb-fliesen.com](mailto:info@vb-fliesen.com)*

9108-WI02-00-10 · 04/2016

Shades and dimensions subject to the usual tolerances. We reserve the right to make technical modifications to the range and alter colours.

