

LAW OF THE YUKON № 1

**OUTHAUL, OUTLAST,
OUTCHILL ANYONE.**



OWNER'S MANUAL

YUKON™



COLD LOCKERS

THE BEST THERE IS.

DO IT RIGHT

The Yukon™ cold locker is the best there is at keeping ice colder for longer, even in the toughest conditions. You've been there. In the dead calm scorcher off the Keys when the dorado are going a little crazy. You need cold fast and to make it last. That's when Yukon saves the day.

Or, you're up in the bush and you knock down a good bull on the second day. Unseasonably warm, wouldn't you know. And the plane isn't due for two more days. Yukon is the answer. It's the cold locker you can trust to outhaul, outlast and outchill any cooler out there.

Igloo has spent a couple of generations making coolers for outdoor guys like you. Now they bring you the ultimate cooling machine – Yukon. Everything about Yukon is tough. From the darn-near indestructible case, to the extra strong hinges, the thicker insulation, bigger drains, two-fisted handles that don't swing or break plus an honest and true full-load capacity that holds what it claims to hold.

All 60 years of Igloo know-how comes together in the biggest, toughest, longest-lasting cold locker on the planet. It's built to thrive where most coolers die; at a fly-in lake, off shore, in the bush.

You've been there. Those times when ice cold performance would save the whole trip. Now you've got Yukon. And our 5-year warranty says you've got Yukon for a bunch of adventures.

One time around. Do it right.



WELCOME TO THE YUKON4-7

It's like nothing else, born and bred a little tougher.

USE AND CARE GUIDE8-9

Plenty of use and just a little care go a long way.

PARTS & ACCESSORIES 10

The best for the best: authentic Yukon-worthy stuff.

5-YEAR WARRANTY 11

Bigger and better, like the Yukon cold locker itself.



WELCOME TO THE YUKON

PART 1

Don't turn the page just yet. These unique features and benefits are what separates Yukon™ from the ordinary. So take a close look. Once you know the Yukon, you'll never go back.

OUTHAUL

TRUE FULL-LOAD CAPACITY

Load capacity is measured from the inside, not outside, for bigger loads. You get all the capacity you pay for.*

*Igloo follows the industry practice of advertising the inside capacity of our coolers, measured according to EN12546-2 2000 testing standards.

Competitor Quart Capacity		Marine™ Quart Capacity	
Claimed	Measured	Claimed	Measured
50	45	50	50
75	69	70	70
155	131	150	150
250	245	250	250

INTEGRATED WORK SURFACE AND RULER

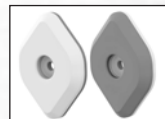
Tough work area on lid gives you a handy surface in the boat or field. Ruler measures fish, tines or gobbler beards for instant bragging rights.

ROCK SOLID TWO-FISTED HANDLES



Steady swing-free design, two-hand wide for heavy loads, easier to grip than rope style. Odor-proof, theft-resistant, never need replacing.

REVERSIBLE SKID/ANTI-SKID FEET Use the sliding side for easy moving & unloading, flip to anti-skid side to keep locker in place. Non-marking, ideal for boat decks.



LAW OF THE YUKON NO. 2
THICK INSULATION IS A BEAUTIFUL THING.

OUTLAST

GUARANTEED TO LAST Seamless roto-molded case is just about indestructible, and backed by a 5-year warranty. UV-protected to guard against sun damage.



BIGGER, STRONGER HINGES Solid marine-grade stainless steel rods, larger and stronger than aluminum for better durability.



EASY-GRIP T-HANDLE LATCHES Flexible, durable, impact resistant, rubberized latches lock in cold, help keep loads secure, and resists corrosion. Non-corrosive materials thrive in marine and severe environments.

THICK, HIGH STRENGTH LOCKABLE LID Heavily insulated to keep ice longer, textured for solid footing when casting, trolling or glassing. Built-in detents stop hyper-extension preventing lid loss and holding lid open to keep lid from closing on fingers. Can be locked for critter-resistant, tamper-resistant security. (Locks not included.)

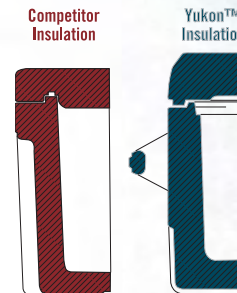


OVERSIZED TETHERED DRAIN PLUG(S)* Drains faster, clog resistant, leak-resistant gasket, with extra-large finger grips for easy use, and a stainless steel tether to secure the plug and prevent loss. *The 150 has two drain plugs.



OUTCHILL

MAXIMUM COLD INSULATION Thermal barrier is thicker throughout with a true 3" of insulating foam in the lid and 2" in the body - to outchill anyone. Yukon cold lockers keep ice for 7-14 days (varies by size).*



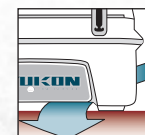
FOOD-GRADE AND DRY ICE COMPATIBLE INTERIOR Construction is tough enough for dry ice so your fish, meat or supplies stay colder and fresher longer. Made of food grade material to protect your goods.

INDUSTRIAL-STRENGTH FREEZER GASKET



360° freezer-type lid gasket locks in cold, locks out heat with a compression seal.

COOL RISER TECHNOLOGY™ Holds locker higher above hot surfaces to improve cooling air flow and make deck washdown easier.



*Ice retention is tested by placing 0.9 lbs of ice per quart of capacity, placed in a 90° F oven and measuring the time that elapses from an internal temperature of 10° F until it reaches 40° F.

WELCOME TO THE YUKON

YUKON PART 2

Yukon has a cold locker for any adventure, from weekend camping to deep sea fishing trips. There's a size to hold everything from campfire grub, to a boatload of fish, to a trophy buck. And true-capacity loads mean whatever you haul, **you can haul more of it.**

SIZE		WEIGHT (approximate)		INTERIOR DIMENSIONS (INCHES), L x W x H	OUTSIDE DIMENSIONS (INCHES), L x W x H
QUART	LITER	LBS	KILOS		
50	47	32	14	23.6 x 11.4 x 11.7	33.6 x 17.0 x 17.6
70	66	36	16	25.6 x 11.7 x 14.6	35.3 x 17.0 x 20.5
150	142	51	23	38.7 x 16.5 x 14.6	48.7 x 22.0 x 20.5
250	236	83	37	44.3 x 18.0 x 19.0	56.9 x 26.1 x 26.0



LAW OF THE YUKON № 6
ONCE YOU CATCH IT,
EAT IT OR ICE IT.

SHIPPING CARTON DIMENSIONS (INCHES), L x W x H

34.1 x 17.6 x 18.3
35.8 x 17.6 x 21.3
49.3 x 22.5 x 21.3
58.4 x 26.3 x 26.9

250
14 DAYS*
COLD

150
10 DAYS*
COLD

70
7 DAYS*
COLD

50
7 DAYS*
COLD



*Performance under controlled conditions. Ice retention time varies from up to 7, 10 or 14 days dependent on the model. Ice retention is tested by placing 0.9 lbs of ice per quart of capacity, placed in a 90° F oven and measuring the time that elapses from an internal temperature of 10° F until it reaches 40° F.

USE AND CARE:

YUKON OWNER'S GUIDE

Your Yukon cold locker is made to chill the biggest loads, under the toughest conditions, for the longest time. Here are a few tips to get the maximum utility and ice retention out of the best cold locker you can own.

HOW TO MAKE THE MOST OF THE COLD.

START COLD, STAY COLD Whenever possible, chill or freeze your goods prior to packing them into your cold locker. The ice won't have to work as hard to get the contents cold – it just has to keep them cold, and will last longer.

ACCLIMATIZE YOUR COLD LOCKER Yukon cold lockers are designed for maximum thermal retention, both hot and cold. If you store an empty Yukon cold locker in a warm shed, direct sunlight, or a hot vehicle, the heat absorbed from its surroundings is going to be retained by the cold locker. When ice is added to chill the contents, it first has to defeat the heat trapped inside. So load your goods into an acclimatized cold locker: keep your Yukon in air conditioning overnight before packing it. If air conditioning isn't an option, an extra bag of ice for use in pre-cooling your cold locker can help to improve its performance. Avoid storing your cold locker in direct sunlight – seek a shady resting spot.

KEEP THE COLD, COLD. As ice melts, cold water takes its place. Don't empty that cold water – it's almost as cold as the remaining ice, and works as an insulator. Plus, air is the enemy of ice so more water inside means less cold-robbing air. Keep in mind that frequently opening the lid reduces the ice retention and melts ice faster. Plan access so you open the lid as few times as possible. Close and latch the lid after accessing contents.

..... **MELTING RATES OF ICE.** Block ice melts at a slower rate than small pieces of ice, so it maintains ice/cold longer. However, cubed ice will chill a Yukon cold locker and its contents faster. Benefits of both sizes of ice should be weighed for optimum cooling and retention.

..... **TWICE THE ICE.** Fill your Yukon Cold Locker with as much ice as possible: typically twice the amount of ice to stored goods is recommended. More ice limits the amount of air inside the cooler, and less air means longer ice retention.

..... **DRY ICE.** Dry ice delivers maximum cold, and your cold locker is built to handle its extreme temperature – but always take proper precautions when handling this material. Dry ice will quickly freeze-burn exposed skin, and can release dangerous quantities of carbon dioxide, so always handle with gloves and allow adequate ventilation. Retention of ice chips or cubes is improved by adding a small amount of dry ice.

CLEANING YOUR COLD LOCKER.

Keeping your Yukon clean is important. And it's easy. Before and after you take it in the field, just use plain old dish soap and water. Scrub it up. Rinse it out. If the job looks tougher, go with bleach and water. Rubber gloves are recommended. Use a toothbrush on the lid gasket and drain plug threads just to be sure the gunk and junk is gone. Dry inside and out before you put it away and your'e ready to roll next time.

LAW OF THE YUKON № 10
ANYTHING WORTH DOING, IS WORTH DOING BIG.



YUKON-WORTHY ACCESSORIES AND PARTS

ONLY AUTHENTIC YUKON STUFF IS GOOD ENOUGH FOR YOUR GOLD LOCKER.

1 TIE-DOWN KIT Yukon tie-down kits safely secure your cold locker and cargo in place on your boat deck, truck bed, dock – anywhere you need it. The unique design of the heavy duty brackets pivot up to securely hold your cold locker in place, then fold down and out of the way when not in use, eliminating the tripping hazard presented by other styles of protruding brackets. Available in two sizes – one to fit 50 quart to 150 quart Yukon cold lockers, and another fits the 250 quart Yukon cold locker. Kit includes four corner brackets, four adjustable straps, screws for installation, and installation instructions.

2 REVERSIBLE SKID/NON-SKID FEET A cooler industry first: the uniquely designed “feet” on Yukon cold lockers are reversible, with a non-skid side made of durable thermoplastic elastomer, and an easy-glide polypropylene side for quick moving or loading. A center removable bolt permits easy reversal of the feet. Heavy duty construction helps prevent wear to the bottom of your cold locker. Designed to fit 50 quart to 150 quart Yukon cold lockers, each kit includes four reversible feet and four bolts for installation.

3 DRAIN PLUG Yukon drain plugs are gasketed for a sure seal, and the rust-resistant stainless steel tether helps to prevent loss. Designed to fit all sizes of Yukon cold lockers, the replacement item includes one threaded drain plug with gasket, a stainless steel chain tether, and tether screw for installation.

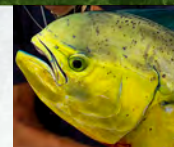
4 RUBBERIZED LATCH The heavy duty, non-corrosive rubberized latch with convenient finger grips is designed for snug closure and extremely long life. If it ever needs replacing, the replacement latch will fit all sizes of Yukon cold lockers. Each part includes one latch with bracket, one fastening post, and screws for installation.

Accessories available at your Yukon retailer or www.yukoncoldlockers.com.

CUSHIONS, WEARABLES AND GEAR Cushions to fit all sizes of Yukon cold lockers and a growing variety of apparel items are available at www.yukoncoldlockers.com. Check back often to see the latest, coolest additions.



LAW OF THE YUKON NO 9
ONLY THE BEST SURVIVE.



THE YUKON™ 5-YEAR WARRANTY

Law of the Yukon #8: If you're going to talk big, you'd better be ready to back it up. Your Yukon 5-year warranty does just that. It covers you far longer than most “extreme” cooler warranties – proof that your Yukon is built that much tougher.

BETTER AND TOUGHER THAN THE OTHERS. EXACTLY WHAT YOU'D EXPECT.

Your Yukon cold locker is backed by a 5-year limited warranty. Activate your coverage now at www.yukoncoldlockers.com or by calling **1-800-364-5566**. Have proof of purchase and serial number handy.

Maintain your Proof of Purchase (original receipt) in a safe place should warranty service ever become necessary. If your Yukon cold locker fails due to defects in material or workmanship, and falls within the guidelines of the Warranty Policy below, you may submit a claim by calling 1-800-364-5566 in the United States or 1-800-500-5447 in Canada. PLEASE DO NOT RETURN YOUR YUKON COLD LOCKER TO THE PLACE OF PURCHASE, AND PLEASE DO NOT SEND YOUR PRODUCT BACK TO IGLOO PRODUCTS CORP UNTIL INSTRUCTED TO DO SO BY AN IGLOO CUSTOMER CARE REPRESENTATIVE.

LIMITED WARRANTY. Igloo Products Corp. warrants Yukon cold lockers to be free from defects in material or workmanship under normal use and service for 5 years from the date of original purchase. This warranty is your exclusive warranty and there are no warranties that extend beyond the description contained here. Igloo shall either repair the product or component or provide you with a replacement product or component if it proves defective under the terms of this warranty within five years of original purchase. The warranty is not transferable. Owner must present original Proof of Purchase to obtain warranty service. Dealers, service centers, or retail stores do not have the right to change the terms and conditions of the warranty. This warranty is not valid if the product or components have been: (1) used commercially, (2) damaged through abuse, misuse or neglect, (3) damaged in an accident, (4) unreasonably used or used for any purpose for which it was not intended, (5) repaired or altered in any way from its original configuration, (6) damaged due to lightning strikes or other acts of nature. Normal wear and tear, including dents, scratches, discoloration, fading, or wear to skid pads is not covered under this warranty. Loss of parts or components removed from the product is not covered under the terms of this warranty. Igloo is not responsible for incidental or consequential damage resulting from any malfunction. All warranties are limited to the five year warranty period. Please carefully review the care instructions in this manual for proper use and care of your Yukon cold locker.



KEEP UP WITH THE LAWS OF THE YUKON



WHEN YOU OWN A YUKON, YOU'RE IN THE CLUB

You know the deal. You don't run into many guys you would fish with or hunt with. Most people just won't go the extra mile. Not so with Yukon owners. They never stop short.

That's why we started the **Yukon Far Horizon Club**. Now, if you have a mind to, you can swap stories and tips with other Yukon owners. You may even want to submit your own **Law of the Yukon**.

Don't forget to register your cold locker, so we can keep you up-to-speed with new Yukon gear as well as fishing and hunting updates. Activate your 5-year warranty at www.yukoncoldlockers.com or by calling 1-800-364-5566. Have proof of purchase and serial number handy.



Use your smartphone
to scan the code

Join us on
Facebook.



WWW.YUKONCOLDLOCKERS.COM

©2011 Igloo Products Corp. | 777 Igloo Road, Katy, TX 77494 | 800-364-5566 | 1921280