

HERCULES

SERVICES B.V.

RENTAL | REPAIR | FIELD SERVICES



RENTAL CATALOGUE

Pipe cutting, beveling
and alignment catalogue





A passion for pipe solutions

About Hercules

Specialists in pipeline industry

Hercules is your partner and specialist in the pipeline industry. Our team is running since 1973 and we are dedicated to keeping your project running smooth and on schedule. We offer the equipment, experience and courses for our clients to complete any pipeline project.

Top of the line equipment

We are committed to offer our clients top quality equipment with great client service and field support. Whether your looking for an specific solution or wanting an modification to your existing tool we provide the most fit solution to the piping problem and we will use our expertise to support you.

Rental of manned equipment

Rental of manned equipment is also possible. During your project the rented equipment will be operated by experienced and specialized professionals with all the know-how and the right tooling to perform the work accurately, safely and efficiently.

Quotation

Our pricing is clear and transparent, please contact us for our price list. We are looking forward to quote your next project!

All equipment in our rental fleet is also available for purchase.



Dedicated to keeping your project running smooth and on schedule. We offer the equipment, experience and courses for our clients to complete any pipeline project.



Hercules has three different divisions:



Hercules Supplies B.V.

Supply of:

- Pipe beveling machines
- Pipe cold cutting machines
- Pipe purging equipment
- Pipe flame cutting & beveling machines
- Pipe alignment/ Welding clamps
- Plate beveling machine
- Pipe jack stands
- Pipe tools
- Pipe stoppers



Hercules Services B.V.

- Production of pipeline equipment
- Modification of pipeline equipment
- Rental of equipment
- Repair of equipment
- Field Services
- Field Support



Hercules Pipeline Education Center

- Pipefitter
- Flange Mechanic FM-VT2
- Visual Welding inspector VTW-1
- Visual Welding inspector VTW-2

Hercules	1 - 2
<i>About</i>	<i>1 - 2</i>
<i>Index Rental Catalogue</i>	<i>2</i>
Pipe cutting & beveling machines	3 - 6
<i>Split frame clamshell general & design</i>	<i>3</i>
<i>Features, advantages & drive units</i>	<i>4 - 5</i>
<i>Tooling</i>	<i>6</i>
Pipe beveling machines	7 - 12
<i>General</i>	<i>7</i>
<i>Cutting tools</i>	<i>8</i>
<i>PREP 2 to PREP 8 (½ to 8")</i>	<i>9</i>
<i>Options PREP 2 to PREP 8</i>	<i>10</i>
<i>PREP 16 to PREP 24 (3 to 24")</i>	<i>11</i>
<i>Options PREP 16 to PREP 24</i>	<i>12</i>
Pipe alignment equipment	13 14
<i>Lever, ratchet and hydraulic</i>	<i>13 - 14</i>
Internal line-up clamps	15 - 18
<i>Red Master Clamp</i>	<i>15</i>
<i>Red Spider Clamp</i>	<i>16</i>
<i>Red Ram Clamp</i>	<i>17 - 18</i>

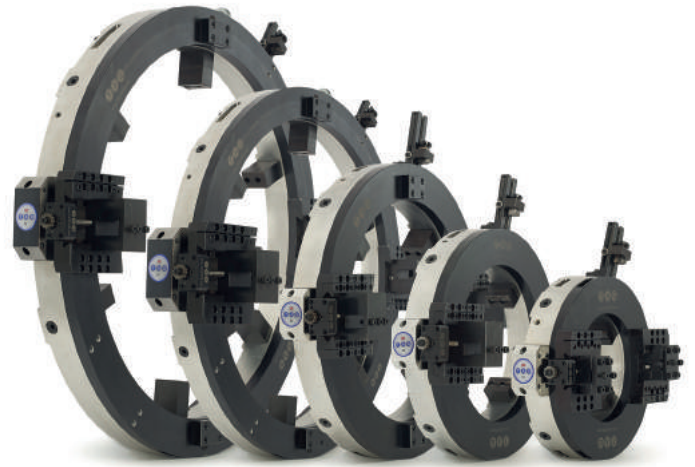
Our manufacturers and our company policy is one of continuous improvement.
Products may change or vary from those illustrated.



PIPE CUTTING & BEVELING MACHINES

Split frame clamshell | Cold cutting and beveling
Range: 1 to 54" o/d (25-1372mm)

- Power:**
- Pneumatic
 - Electric (110v or 220v)
 - Hydraulic
 - Electric NC Servo Motor
- Functions:**
- External Beveling
 - Internal Beveling
 - Counter-boring
 - Compound Bevels
- Materials:** Any kind of Steel and Exotic Alloy



The basics

The Split Frame Clamshells are essentially portable lathes.

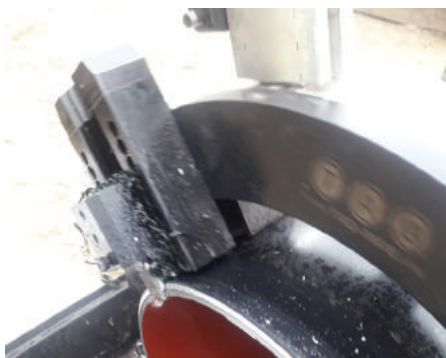
Offering the versatility to cut and Bevel (simultaneously if required), Face, counter bore and O/D machine pipes (and vessels) of almost any diameter.

A light weight aluminum body, encases a steel inner ring gear running on solid bearings, ensuring manageability, yet extreme strength and durability.

Coupled with wide, hardened clamping feet, with easy read rule marks, enable rapid, repeatable concentric setup, even on out of round pipes and joints.

A range of tooling and accessories allow you to tailor your machine to your particular job.

Quick split frame design



PIPE CUTTING & BEVELING MACHINES

Split frame clamshell | Cold cutting and beveling
Range: 1 to 54" o/d (25-1372mm)

Features & advantages

- 11 models cover a range from 1" (25.4 mm) to 48" (1219.2 mm) O/D
- Pneumatic, Hydraulic, standard electric and NC SERVO Electric Drive options provide increased versatility
- Adjustable heavy duty bearings, combined with easy access maintenance points allow inspection and adjustment
- Clamping Feet are quickly and easily adjusted via a flush Hex head through the outer ring. Feet feature easy read measure marks for rapid setup & adjustment
- The clamshells accept a wide range of accessories to increase performance and expand machine capabilities
- Unique transmission tool slides with changeable gears for adjustable Radial tool feed

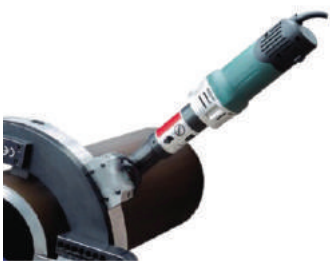


beveling

Drive units

To meet the varying needs of job-sites worldwide, the Clamshell Motors and Drives are available in a range of configurations.

Drive motors are available in hydraulic, pneumatic and electric configurations. Motor mounting flanges are available in straight back (in-line), right angle and front drive reversible options.



Electric motors



Pneumatic motors



Servo electric motors



Hydraulic motors

PIPE CUTTING & BEVELING MACHINES

Split frame clamshell | Cold cutting and beveling
Range: 1" to 54" o/d (25-1372mm)

Electric NC Servo Drive Motor

The single phase Electric NC (Numerically Controlled) servo motor offers a new level of performance and capacity for electric drive power of the Split Frame range. A 1.5 Kilowatt servo motor, which, like a 3 phase motor, or Hydraulic drive, does not slow and strain under load. The servo motor, is controlled by a wired, or wireless, delta touch screen NC control unit, enabling accurate, infinite RPM control. If you carry out the same job regularly with the machine, once you find the optimum performance setting and values, these can be set into the NC control unit and recalled in the future. Available in single for up to 30mm thickness or double for 30mm+.

Hydraulic Power Pack

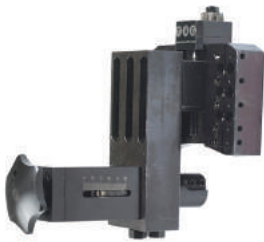
Hercules Services offers a custom built Hydraulic Power Pack with all the power needed to cut and bevel all thicknesses and materials of pipe when used with the Split Frame Clamshells.

Specifications

- Rated pressure: 16MPa
- Rated flow: 25 l/min
- Hydraulic motor power: 200 r/min
- Hydraulic motor torque: 260 N.M.
- Electric power: 7.5KW
- Electric motor rate: 1450 r/min
- Timing range: 0-20 r/min
- Shipping weight: 300kg

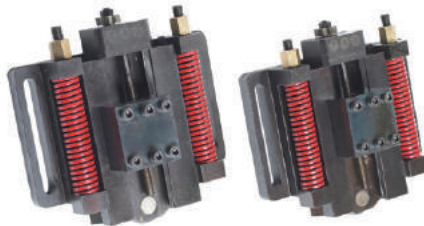
Transmission tool slide range

The tool slides are available in various configurations.



COUNTER BORE TOOL SLIDE

The counter bore slide module accessory bolts directly to the standard tool slide and can be installed immediately upon completion of the cut & external Bevel, to remove any internal inconsistencies prior to welding. The counterbore tool slide module is available in a range of travel lengths.



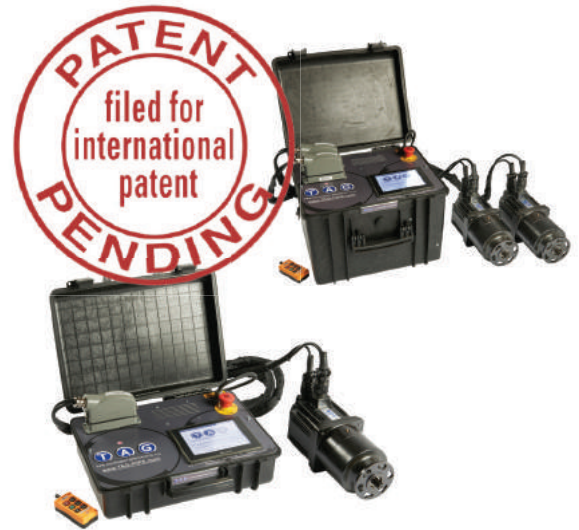
SPRING LOADED O/D TRACKING

A bearing wheel housed in the tool slide, is compressed to the O/D of the Pipe by 2 x 150lb springs, ensuring an even, accurate weld prep and root face, by tracking the O/D contour of the pipe especially advantageous for large diameters and heavier wall thicknesses. For Cutting & Beveling of all materials of up to 120mm wall thickness.



STANDARD

Low profile, light weight, for tight access situations. Utilizing standard blade tooling. For Cutting & Beveling all materials up to 120mm wall thickness.



PIPE CUTTING & BEVELING MACHINES

Split frame clamshell | Cold cutting and beveling
Range: 1" to 54" o/d (25-1372mm)



*A passion
for pipe
solutions*

Tooling

The range of tooling includes sever, bevel, double-bevel, compound bevel and counter bore tools. Tooling is available in a range of different lengths and sizes, to match tooling with application precisely.

We also offer custom designed tooling, special tool steel, and inserts for applications not covered by the standard range.



Model	Size Range (inch)	Working Range O.D. (mm)
TSFC6	1 - 6"	25 - 168mm
TSFC8	2 - 8"	50 - 219mm
TSFC12	6 - 12"	168 - 323mm
TSFC16	10 - 16"	254 - 406mm
TSFC18	12 - 18"	323 - 457mm
TSFC20	14 - 20"	355 - 508mm
TSFC24	18 - 24"	457 - 610mm
TSFC30	24 - 30"	610 - 762mm
TSFC36	30 - 36"	762 - 914mm
TSFC42	36 - 42"	914 - 1066mm
TSFC48	42 - 48"	1066 - 1240mm
TSFC54	48 - 54"	1240 - 1372mm

* Larger sizes available upon request



PIPE BEVELING MACHINES

PREP machines | Portable pipe beveling machines
Range: ½” to 24”

- Power:**
- Pneumatic
 - Electric (110v or 220v)
 - Battery
- Functions:**
- External Beveling
 - Internal Beveling
 - Elbow Beveling
 - Facing
 - Counter-boring
 - Weld Removal
 - J-Prepping and facing of Tube plate
- Materials:** Any kind of Steel and Exotic Alloy



Small, medium and large diameter ID Locking pipe end beveling machines, designed to suit the arduous conditions of todays job sites covering all pipes sizes and any material from ½” to 24”.

We offer a large range of i/d locking portable pipe beveling machines ranging from ½” i/d to 24” i/d. Our beveling machines are capable of producing all of the standard weld preparations required, i.e V-preps, J-preps and bore matches on mild steel, stainless steel, duplex, super duplex and Inconel wrapped pipes.

All of the machines in the range are torque reactive, enabling the operator to work on pipe without needing to secure it in a vice, this feature makes this range of machines ideal for on-site or workshop environments.



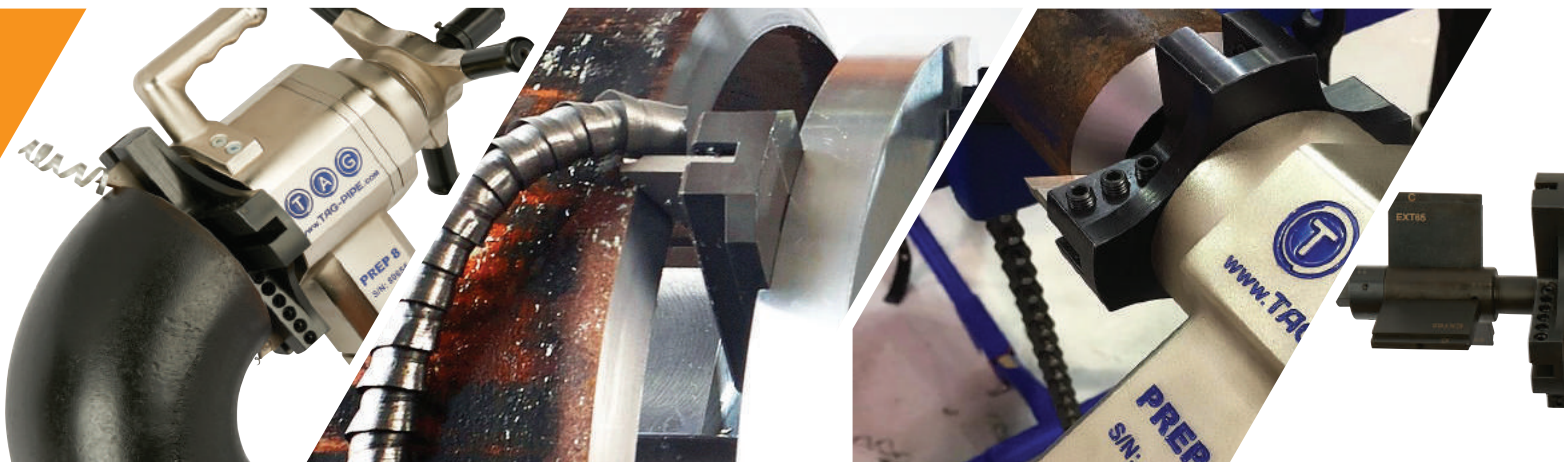
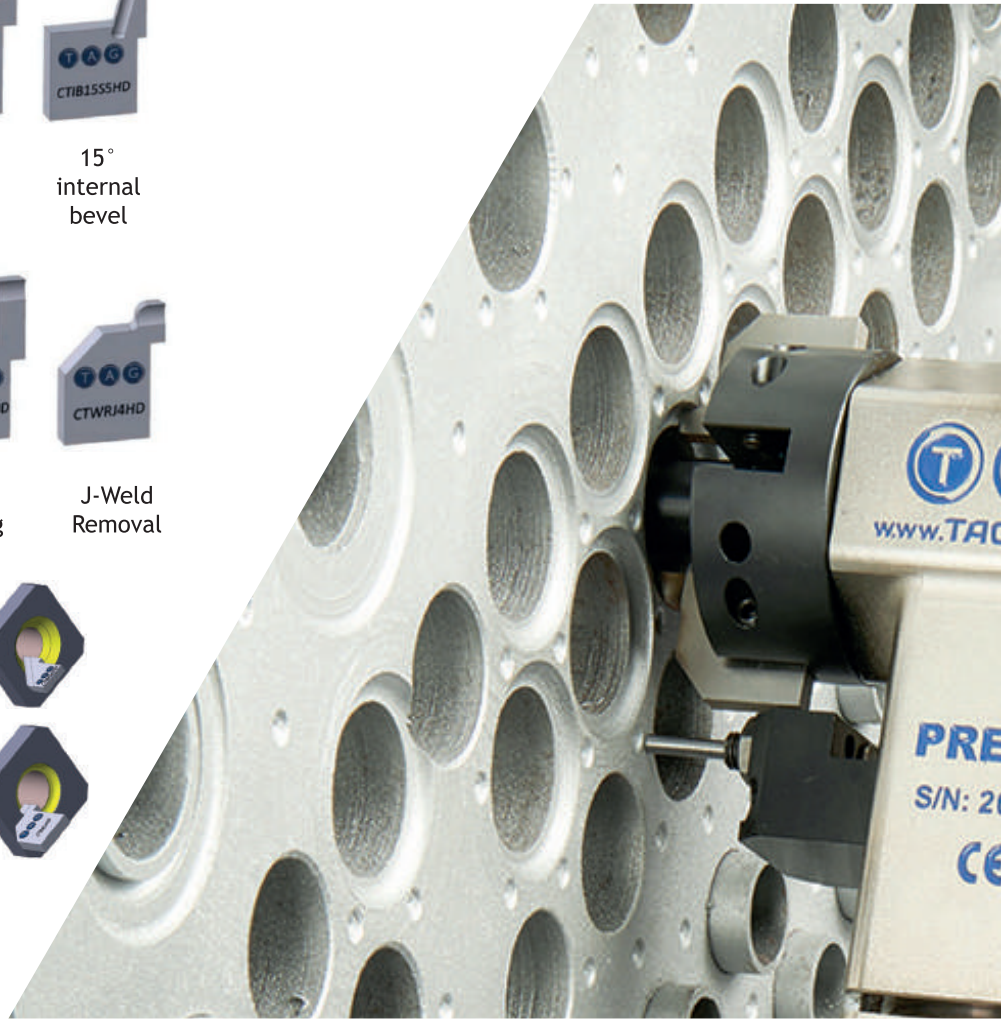
Designed to suit the arduous conditions of todays job sites

PIPE BEVELING MACHINES

PREP machines | Portable pipe beveling machines
Range: ½" to 24"

Cutting Tools

All shapes, sizes and angles of the cutting tools are available. See below the examples of common cutting tools.



PIPE BEVELING MACHINES

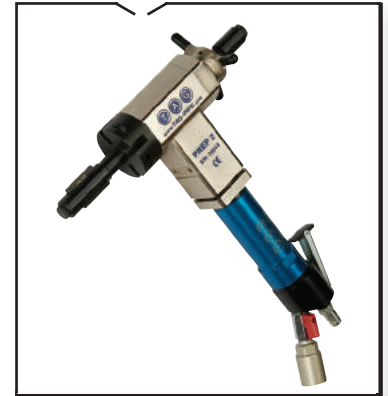
PREP machines | Portable pipe beveling machines Range: ½” to 24”

HSE PREP 2

**Pipe beveling machine ½” - 1½”
(23mm - 42mm i/d) - (optional 12.5mm)**

The smallest in our range of i/d locking, direct in-line feed end prep machines.

The PREP 2 is small, lightweight, yet powerful, in electric (110v or 220v), pneumatic drive or battery form. Simultaneous external and internal beveling and facing of pipe or tubes is simple, ideal for accurate repetitive work. Its size, power, and functionality, make it extremely popular in high volume heat exchanger work, tube facing, weld removal and J-prepping of the tube plate.

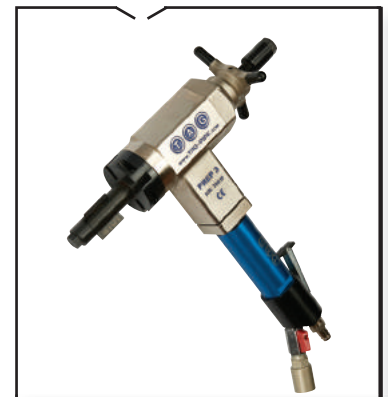


HSE PREP 3

**Pipe beveling machine 1” - 3”
(28mm - 76mm i/d) - (optional 20mm)**

The PREP 3 is one of the most popular i/d locking, in-line feed end prep machines.

The PREP 3's power to weight ratio, in electric (110v or 220v), pneumatic drive or battery form is unrivalled. Simultaneous external and internal beveling and facing of tubes can be performed with ease for accurate repetitive work. Its size, power, and functionality, makes it extremely popular in high volume boiler repair and maintenance work, tube facing, weld removal, and J-prepping of the tube plate.



HSE PREP 4

**Pipe beveling machine 1” - 4”
(23mm - 112mm i/d)**

The PREP 4 is a very popular versatile machine that is robust and extremely powerful.

Used in many industries but commonly found in tough in-situations and environments, such as power station shut downs. The PREP 4 boasts an increased locking range of 1” to 4” i/d and is available in pneumatic, electric or battery.



HSE PREP 8

**Pipe beveling machine 2” - 8”
(50mm - 207mm i/d)**

One of our most powerful and popular small diameter i/d locking, in-line feed end prep machines. This is mainly due to its impressive 2” to 8” working range and unrivalled power.

The PREP 8 is a portable, one man operation machine, its power to weight ratio, and offset 4 jaw tool holder (chuck) allows use of up to 4 insert or form tools to enable simultaneous external, internal beveling of even the heaviest wall pipe and tube, on site, or in the fabshop.



PIPE BEVELING MACHINES

PREP machines | Portable pipe beveling machines
Options PREP 2 to 8 with range ½” to 8”



PNEUMATIC

Available for:

- PREP 2
- PREP 3
- PREP 4
- PREP 8



ELECTRIC

Available for:

- PREP 2
- PREP 3
- PREP 4
- PREP 8



BATTERY

Available for:

- PREP 2
- PREP 3
- PREP 4

Accessories & options



REDUCED SHAFT

Available for:

- PREP 2 | 12.5-23mm
- PREP 3 | 20-30mm



RATCHET HANDLES

Available for:

- PREP 2
- PREP 3
- PREP 4
- PREP 8



FEED STOPPER

Available for:

- PREP 2
- PREP 3



ELBOW SHAFT

Available for:

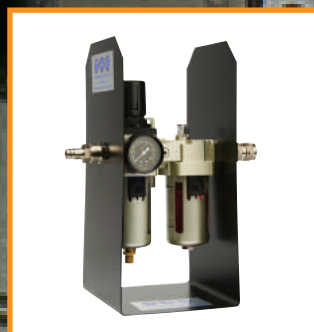
- PREP 2
- PREP 3
- PREP 4
- PREP 8



AUTO LOCK

Available for:

- PREP 2
- PREP 3
- PREP 4
- PREP 8



FILTER LUBRICATOR

Available for:

- PREP 2
- PREP 3
- PREP 4
- PREP 8



PACKAGE

All units are supplied complete with all locking jaws to cover the full range of the machine.

PIPE BEVELING MACHINES

PREP machines | Portable pipe beveling machines Range: ½” to 24”

HSE PREP 16

Pipe beveling machine 3” - 16” (72mm - 406mm i/d)

The PREP 16 is the first in the new range of a heavy duty large diameter beveling machines.

Offering ratchet i/d jaw locking, as well as ratchet bevel feed control for effortless heavy wall preps. Offered with a 3 HP pneumatic or 1750 Watt electric motor any bevel geometry can be performed within the impressive 3” to 16” range. J-preps, counter boring, and facing can all be performed, simultaneously, due to its light weight, yet unrivalled power, the PREP 16 is ideal for on-site, off shore, nuclear, and other applications where precision welds are required.



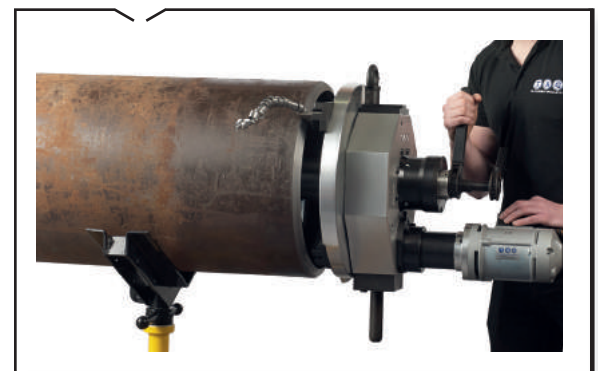
HSE PREP 20

Pipe beveling machine 4” - 20” (100mm - 500mm i/d)

The PREP 20 is an extremely powerful beveling machine, designed to give long life and accurate weld preparations in tough in-situ or engineering workshop environments.

Fully torque reacted throughout its complete range, it uses one centre heavy duty 4” locking shaft with built in plug jaws for rapid set up. Change over time from one diameter to another is achieved quickly and simply.

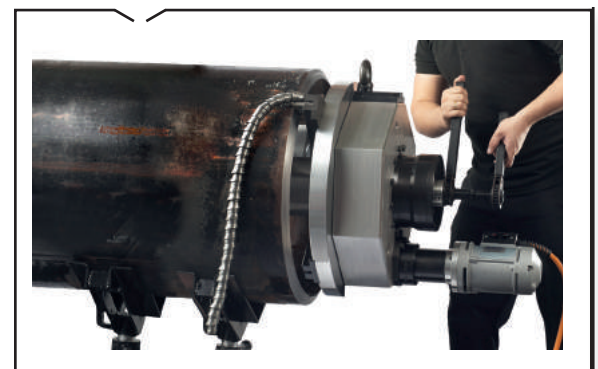
The PREP 20 is available in pneumatic or with a 3200 Watt heavy duty electric motor. Available in 110v or 220v power supply.



HSE PREP 24

Pipe beveling machine 7” - 24” (180mm - 609mm i/d)

A powerful, heavy duty electric or pneumatic motor drives a reduction gearbox converting 3.5 HP into 12500 Nm of torque!! Rigidity and unrivalled beveling strength are ensured with a 5.9” Locking Shaft with built in plug jaws, a bolt in 6 point locking system allows the PREP 24 to cover an impressive range of 7” to 24”! Both locking and feeding are controlled by ratchet, enabling the operator to lock into the pipe in seconds, and provide a consistent bevel feed, for the perfect surface finish, even on heavy wall pipes.



PIPE BEVELING MACHINES

PREP machines | Portable pipe beveling machines
Range: ½" to 24"



PREP 16



PREP 20



PREP 24

Features & advantages PREP 16 to 24



OPTIONAL EXTENSION KITS

Optional extension kits up to 42"
available on request.



WIDE LOCKING JAWS

Innovative Wide locking jaws offer 6 point
locking from 3 jaws giving superior clamping
force for chatter free end preps.



ELECTRIC

The PREP 16 - 20 - 24 can also be supplied as
an electric version, with a heavy duty, in-line
or right angle motor drive, or a heavy duty
pneumatic motor.

- PREP 16 1750 watt heavy duty motor
3.0 Hp pneumatic motor
- PREP 20 3200 watt heavy duty motor
3.5 Hp pneumatic motor
- PREP 24 3200 watt heavy duty motor
3.5 Hp pneumatic motor



UNRIVALLED POWER & STABILITY

The PREP 16 -20 - 24 have unrivalled power
and stability, utilising a ratchet system for
both jaw locking, and bevel feed.

PIPE ALIGNMENT CLAMPS

Lever - Ratchet - Hydraulic | Tack - No Tack Range: 2" to 60"

HSE Hand Lever Cage Clamp

Range 2" to 60" (51 mm to 1524 mm)

The Hercules Services Lever Cage Clamps are available in sizes ranging from 2" - 60" in either tack or no-tack version.

Lever Cage Clamps are intended for rapid alignment of two pieces of pipe prior to welding and not designed to reform pipe.

- Quick, simple and easy to use.



Tack model	No-tack model	Size Range	Pipe size
HSE-LCC-T-2	-	2"	51 mm
HSE-LCC-T-3	-	3"	76 mm
HSE-LCC-T-3.5	HSE-LCC-NT-3.5	3.5"	89 mm
HSE-LCC-T-4	HSE-LCC-NT-4	4"	102 mm
HSE-LCC-T-5	HSE-LCC-NT-5	5"	127 mm
HSE-LCC-T-6	HSE-LCC-NT-6	6"	152 mm
HSE-LCC-T-8	HSE-LCC-NT-8	8"	203 mm
HSE-LCC-T-10	HSE-LCC-NT-10	10"	254 mm
HSE-LCC-T-12	HSE-LCC-NT-12	12"	305mm
HSE-LCC-T-14	HSE-LCC-NT-14	14"	356 mm
HSE-LCC-T-16	HSE-LCC-NT-16	16"	406 mm
HSE-LCC-T-18	HSE-LCC-NT-18	18"	457 mm
HSE-LCC-T-20	HSE-LCC-NT-20	20"	508 mm
HSE-LCC-T-22	HSE-LCC-NT-22	22"	559 mm

Tack model	No-tack model	Size Range	Pipe size
HSE-LCC-T-24	HSE-LCC-NT-24	24"	610 mm
HSE-LCC-T-26	HSE-LCC-NT-26	26"	660 mm
HSE-LCC-T-28	HSE-LCC-NT-28	28"	711 mm
HSE-LCC-T-30	HSE-LCC-NT-30	30"	762 mm
HSE-LCC-T-32	HSE-LCC-NT-32	32"	812 mm
HSE-LCC-T-34	HSE-LCC-NT-34	34"	864 mm
HSE-LCC-T-36	HSE-LCC-NT-36	36"	914 mm
HSE-LCC-T-38	HSE-LCC-NT-38	38"	965 mm
HSE-LCC-T-40	HSE-LCC-NT-40	40"	1016 mm
HSE-LCC-T-42	HSE-LCC-NT-42	42"	1219 mm
HSE-LCC-T-48	HSE-LCC-NT-48	48"	1220 mm
HSE-LCC-T-54	HSE-LCC-NT-54	54"	1372 mm
HSE-LCC-T-60	HSE-LCC-NT-60	60"	1524 mm

HSE Hydraulic Cage Clamp

Range 16" - 60" (406mm - 1524mm)

The Hercules Services Hydraulic Cage Clamps are available in sizes ranging from 16" - 60" in either tack or no-tack version.

Equipped hydraulic jack capacity 15 or 20 ton.



Tack model	No-tack model	Size Range	Pipe size
HSE-HCC-T-16	-	16"	406 mm
HSE-HCC-T-18	-	18"	457 mm
HSE-HCC-T-20	HSE-HCC-NT-20	20"	508 mm
HSE-HCC-T-22	HSE-HCC-NT-22	22"	559 mm
HSE-HCC-T-24	HSE-HCC-NT-24	24"	610 mm
HSE-HCC-T-26	HSE-HCC-NT-26	26"	660 mm
HSE-HCC-T-28	HSE-HCC-NT-28	28"	711 mm
HSE-HCC-T-30	HSE-HCC-NT-30	30"	762 mm
HSE-HCC-T-32	HSE-HCC-NT-32	32"	812 mm

Tack model	No-tack model	Size Range	Pipe size
HSE-HCC-T-34	HSE-HCC-NT-34	34"	864 mm
HSE-HCC-T-36	HSE-HCC-NT-36	36"	914 mm
HSE-HCC-T-38	HSE-HCC-NT-38	38"	965 mm
HSE-HCC-T-40	HSE-HCC-NT-40	40"	1016 mm
HSE-HCC-T-42	HSE-HCC-NT-42	42"	1219 mm
HSE-HCC-T-48	HSE-HCC-NT-48	48"	1220 mm
HSE-HCC-T-54	HSE-HCC-NT-54	54"	1372 mm
HSE-HCC-T-60	HSE-HCC-NT-60	60"	1524 mm

PIPE ALIGNMENT CLAMPS

Lever - Ratchet - Hydraulic | Tack - No Tack
Range: 2" to 60"

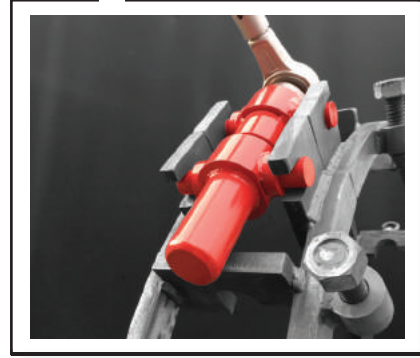
HSE Ratchet Cage Clamp

Range 6" - 60" (152mm - 1524mm)

The Hercules Services Ratchet Cage Clamps are available in sizes ranging from 6" - 60" in either tack or no-tack version.

The Ratchet is an Hercules Services designed product and optimized by field workers. It has great strength and accuracy to ensure an optimal alignment.

- Strong and precise for large pipe diameters.



Tack model	No-tack model	Size Range	Pipe size
HSE-RCC-T-6	-	6"	152 mm
HSE-RCC-T-8	-	8"	203 mm
HSE-RCC-T-10	-	10"	254 mm
HSE-RCC-T-12	HSE-RCC-NT-12	12"	305 mm
HSE-RCC-T-14	HSE-RCC-NT-14	14"	356 mm
HSE-RCC-T-16	HSE-RCC-NT-16	16"	406 mm
HSE-RCC-T-18	HSE-RCC-NT-18	18"	457 mm
HSE-RCC-T-20	HSE-RCC-NT-20	20"	508 mm
HSE-RCC-T-22	HSE-RCC-NT-22	22"	559 mm
HSE-RCC-T-24	HSE-RCC-NT-24	24"	610 mm
HSE-RCC-T-26	HSE-RCC-NT-26	26"	660 mm

Tack model	No-tack model	Size Range	Pipe size
HSE-RCC-T-28	HSE-RCC-NT-28	28"	711 mm
HSE-RCC-T-30	HSE-RCC-NT-30	30"	762 mm
HSE-RCC-T-32	HSE-RCC-NT-32	32"	812 mm
HSE-RCC-T-34	HSE-RCC-NT-34	34"	864 mm
HSE-RCC-T-36	HSE-RCC-NT-36	36"	914 mm
HSE-RCC-T-38	HSE-RCC-NT-38	38"	965 mm
HSE-RCC-T-40	HSE-RCC-NT-40	40"	1016 mm
HSE-RCC-T-42	HSE-RCC-NT-42	42"	1219 mm
HSE-RCC-T-48	HSE-RCC-NT-48	48"	1220 mm
HSE-RCC-T-54	HSE-RCC-NT-54	54"	1372 mm
HSE-RCC-T-60	HSE-RCC-NT-60	60"	1524 mm



Great strength and accuracy to ensure an optimal alignment.



INTERNAL LINE UP CLAMPS

RED MASTER CLAMP

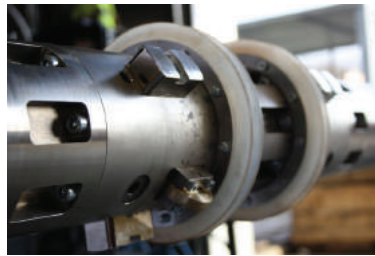
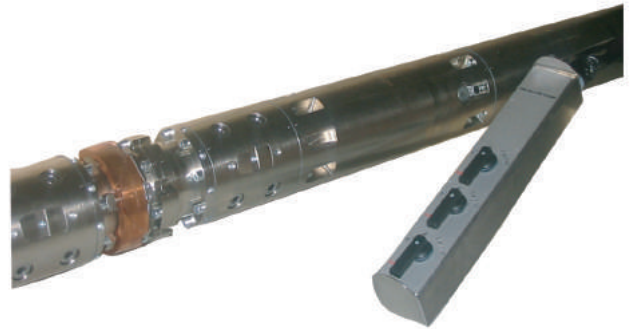
Working range: I.D. 110 to 480mm

The Hercules Red Master Clamp is a revolutionary internal hydraulic line up clamp for the smaller pipe ranges for on- and offshore applications. The clamp combines pneumatic with hydraulic force which generates excellent capacities for heavy wall thickness pipes. It's solid housing and superb material treatment the Red Master Clamp can withstand major forces.

The clamping force is adjustable up to 44 tons which allows a precise alignment of the welding joint. It eliminates any miss match for heavy wall small bore pipes and is especially suitable for S- and J-lay systems. The support rollers have easy access and less adjustment time by using a centre screw. The Red Master Clamp can be expanded with several options such as a drop fail protection module, copper shoes module, motorization module and/or a backing oxygen module.

Specifications:

- Operating pressure: 8 bar (air)
- Expanders: 3 up to 8
- Clamping force: adjustable up to 22 tons for each expander
- Working environment: Temp. -40°C - 50°C
- Operated: Remote controlled by cable and hoses
- Optional: Backing gas module, Copper shoe module, Driving unit
- Quality/ safety: CE



Model	Working Range I.D. (mm)	Length (mm)
Red Master Clamp 100	110 - 150mm	3000mm
Red Master Clamp 130	140 - 200mm	2800mm
Red Master Clamp 180	190 - 270mm	2000mm
Red Master Clamp 250	260 - 360mm	1800mm
Red Master Clamp 350	350 - 480mm	1600mm



Increase productivity and improves quality and safety

INTERNAL LINE UP CLAMPS

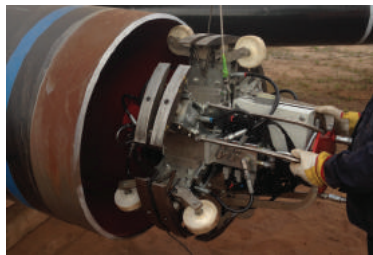
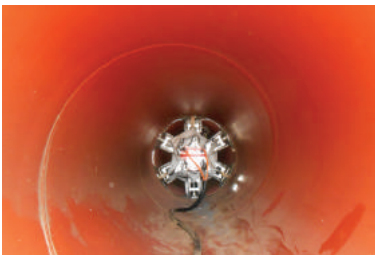
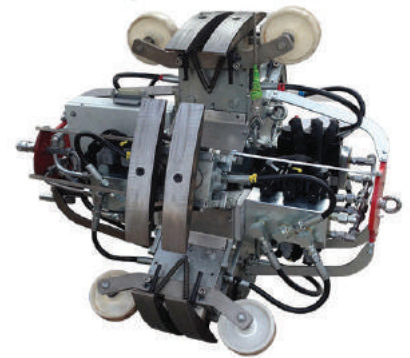
RED SPIDER CLAMP Size range: 16" to 42"

The Hercules Red Spider Clamp is a compact hydraulic internal line up clamp designed for piping and pipeline applications. Due to the modifiable height of the expanders the Red Spider Clamp is able to clamp multiple pipe diameters using only one clamp!

Each expander generates up to 50 tons of force to eliminate Hi-Lo in the setup of pipes/ fittings (flange, tee, elbow etc.) The hydraulic pump unit is separately connected to the clamp which makes the Red Spider Clamp highly maneuverable. The powerful hydraulics combined with the agile specs of the internal line up clamp allows for instant and precise pipe alignment.

Specifications:

- Power unit pressure: Electrical 100V - 110V | 220V - 230V, 0-250 bar
- Expanders: 2 expander rows
- Clamping force: 50 tons
- Radius elbow: $\geq 1,5D$ based on ANSI wall thickness
STD pipe dimensions
- Working environment: Temp. -40°C - 50°C
- Operated: Remote controlled by cable and hoses
- Equipment: Health shields, every length cable and hoses available at request
- Quality/ safety: CE



Model	Working Range I.D. (mm)	Size range (inch)
Red Spider Clamp 16" - 18"	445 - 515mm	16" - 18"
Red Spider Clamp 20" - 24"	515 - 585mm	20" - 24"
Red Spider Clamp 24" - 32"	560 - 794mm	24" - 32"
Red Spider Clamp 36" - 42"	850 - 1040mm	36" - 42"



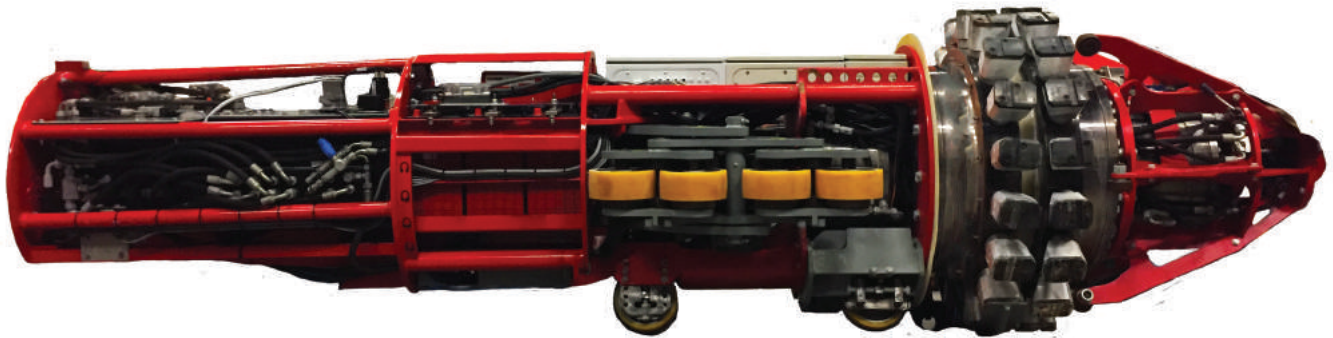
INTERNAL LINE UP CLAMPS

RED RAM CLAMP

Range: 36-42" to 48-56"

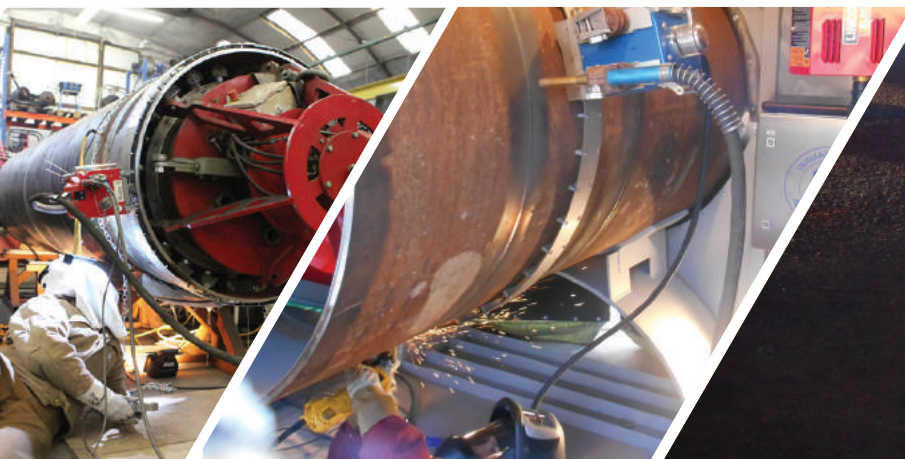
The Red Ram Clamp is a revolutionary internal line up clamp, which is specially designed for large bore diameter pipes. It has excellent capacities for heavy and small wall thickness for off- and onshore applications. With its massive frame and excellent material treatment The Red Ram Clamp can withstand major forces!

The clamping force is hydraulic and adjustable up to 400 tons for each expander row, which allows a precise alignment. It eliminates any miss match and forces oval pipes back to round. The gap between the two pipes is adjustable by a hydraulic cylinder up to 6mm. Leakage of hydraulic oil is impossible because of an anti-leakage system. The Red Ram Clamp can be expanded with a copper shoes module.



Specifications:

- Clamping force 800ton (2x400ton)
- Remote control (all Functions)
- Pipe range 36"-42" / 48"-56"
- Hydraulic gap adjustment
- 48V battery pack for 12 working hours
- Self propelled and parking brake
- Self aligning expander shoes
- Copper shoes for automatic welding



Internal hydraulic line-up clamp with remote control and built in power pack



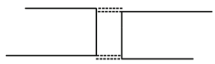
INTERNAL LINE UP CLAMPS

RED RAM CLAMP Range: 36-42" to 48-56"

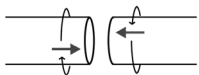
Technical specification	
Range	36" - 42" / 48" - 56"
Power Unit	Electrical, battery pack 48V Sufficient for 12 working hours
Max force	400 ton for each expander row
Expanders	2 expander rows Each row has 24 expanders
Slope max.	15°
Radius on bent pipes	40xD
Working environment	Temp -40° / 50° C
Travel speed	0,1 - 0,4 m/s
Battery's	Deep-cycle AGM
Optional	Copper shoes for automatic welding
Training	Training for personnel about operations
Quality/ Safety	CE



No more pipe end sorting



Fulfills HiLo requirements



Reduces fit-up time



Improves weld quality



HERCULES

SERVICES B.V.

RENTAL | REPAIR | FIELD SERVICES



OUR SERVICES

Hercules Supplies B.V.

Supply of:

- Pipe beveling machines
- Pipe cold cutting machines
- Pipe purging equipment
- Pipe flame cutting & beveling machines
- Pipe alignment/ Welding clamps
- Plate beveling machines
- Pipe jack stands
- Pipe tools
- Pipe stoppers

Hercules Services B.V.

- Rental of equipment
- Repair of equipment
- Production of pipeline equipment
- Modification of pipeline equipment
- Field Services
- Field Support

Hercules Pipeline Education Center

- Pipefitter
- Flange Mechanic FM-VT2
- Visual Welding inspector VTw-1
- Visual Welding inspector VTw-2

A passion for pipe solutions



Head office

Hercules Services B.V.
Albert Einsteinweg 4
8218 NH Lelystad
The Netherlands

Warehousing and Office

Hercules Services B.V.
Pascalbaan 1
3439 MP Nieuwegein
The Netherlands

Customer service

T: +31 (0)320-762610
E: info@pipe-solutions.com
W: www.pipe-solutions.com

Follow us on

