



WARWICK
THE UNIVERSITY OF WARWICK

Outreach at Warwick

A Teacher's Guide

Opportunities for your students to engage with the
University of Warwick

Introduction

how to use this guide

This guide has been designed to provide teachers with an overview of the activities and events which the University of Warwick offer to Widening Participation (WP) students.

Who are these activities for?

We are looking to work with widening participation students in order to level the playing field with those who are from more advantaged backgrounds. Priority will be given to students from under-represented groups. In particular we are looking to engage with:

- ▶ Students who have no parental history of higher education
- ▶ Students eligible for Free School Meals/Pupil Premium
- ▶ Students living in areas of high deprivation and low participation rates to accessing HE
- ▶ Students who are or have been in local authority care
- ▶ Students with disabilities

Please note that eligibility criteria can vary for ongoing programmes. For specific programme information, please visit the websites indicated with the programme information.

What do we offer?

We offer 3 types of intervention, which are described in more detail below. This is how what we offer is presented throughout this guide:

In-school

One off sessions that members of the University of Warwick Outreach Team will come to deliver in your school.

On-campus

One off sessions that are delivered at the University of Warwick campus. Schools are required to provide transport and a member of staff to accompany the student group on to campus for these sessions.

Ongoing programmes

Multiple events provided as part of a multi-year programme where teachers must nominate or students must directly apply to take part in. Students will be considered on the basis of the programme's eligibility criteria. Recruitment for the programmes usually takes place during the Autumn Term and events shall be delivered during the Spring and Summer term. Students must make their own way to these events, although support may be provided with travel costs.

How do I book sessions?

Complete the following booking form to register your interest in the following events or programmes: warwick.ac.uk/outreacheventquery:

| Name of Session | Year Groups | Location |
|----------------------------------|----------------|-----------|
| One-off sessions | | |
| Banking & Finance taster session | 10, 11 | In-school |
| Law taster session | 10, 11 | In-school |
| One off sessions | | |
| Science and Survival Day | 9 | On-campus |
| Banking & Finance taster day | 10, 11 | On-campus |
| Law taster day | 10, 11 | On-campus |
| School Warwick Visits | 11, 12, 13 | On-campus |
| Discovery Days | 12 | On-campus |
| Summer schools | | |
| Year 10 Summer School | 10 | On-campus |
| Year 12 Summer School | 12 | On-campus |
| Ongoing programmes | | |
| Warwick Sutton Scholars | 8, 9 | On-campus |
| Pathways to Law | 12, 13 | On-campus |
| Pathways to Banking & Finance | 12, 13 | On-campus |
| Realising Opportunities | 12, 13 | On-campus |
| UniTracks | 10, 11, 12, 13 | Varied |

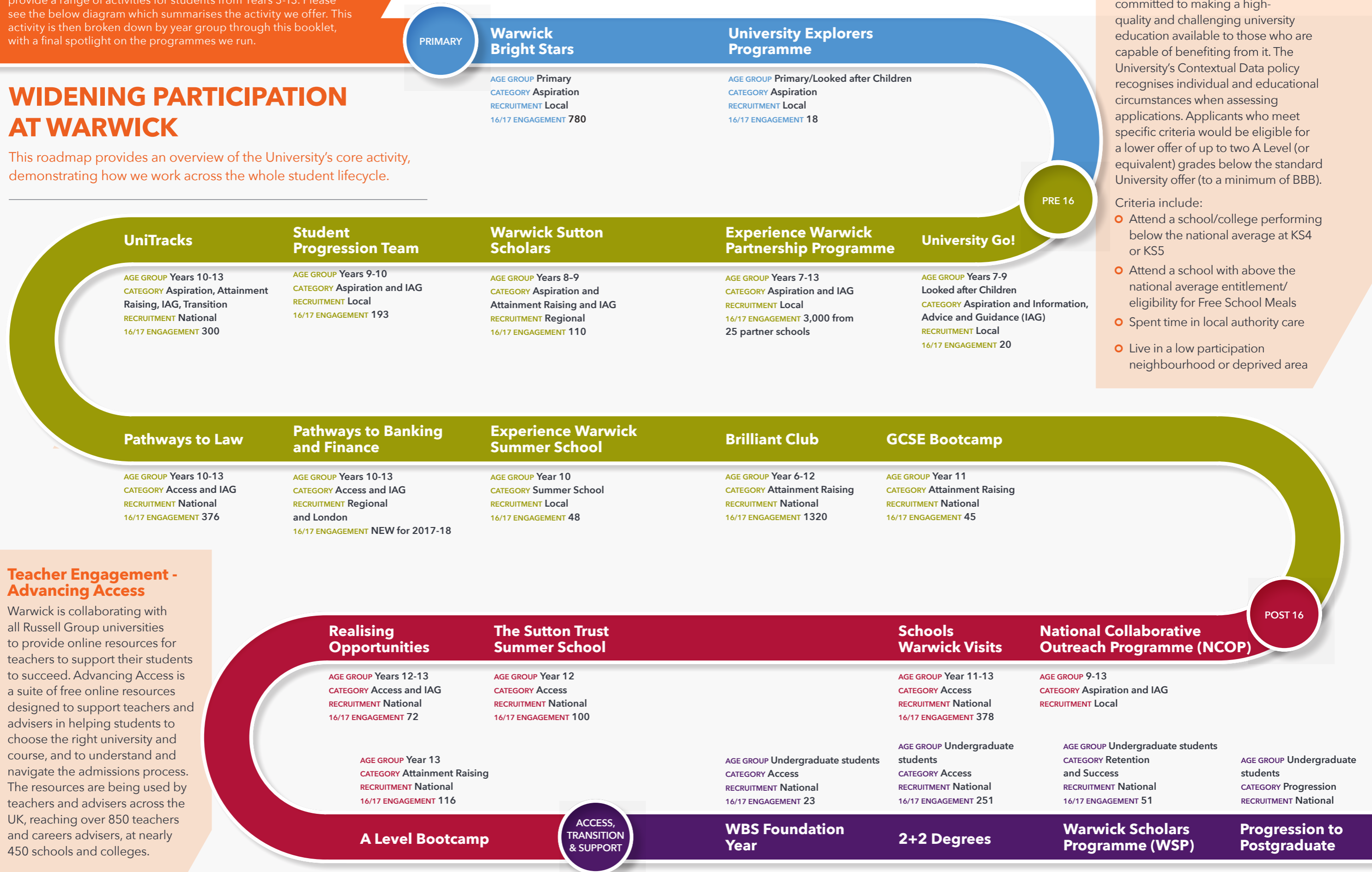
Overview of activity on offer

The University of Warwick's Outreach team are keen to work with students attending state funded schools in the Coventry and Warwickshire area to provide activities to ensure that students from non-traditional backgrounds have opportunities to explore what higher education and competitive professions have to offer. We provide a range of activities for students from Years 3-13. Please see the below diagram which summarises the activity we offer. This activity is then broken down by year group through this booklet, with a final spotlight on the programmes we run.

KEY TO RECRUITMENT
Local = Coventry and Warwickshire
Regional = West Midlands

WIDENING PARTICIPATION AT WARWICK

This roadmap provides an overview of the University's core activity, demonstrating how we work across the whole student lifecycle.



Contextual Admissions

The University of Warwick is committed to making a high-quality and challenging university education available to those who are capable of benefiting from it. The University's Contextual Data policy recognises individual and educational circumstances when assessing applications. Applicants who meet specific criteria would be eligible for a lower offer of up to two A Level (or equivalent) grades below the standard University offer (to a minimum of BBB).

Criteria include:

- Attend a school/college performing below the national average at KS4 or KS5
- Attend a school with above the national average entitlement/eligibility for Free School Meals
- Spent time in local authority care
- Live in a low participation neighbourhood or deprived area

Teacher Engagement - Advancing Access

Warwick is collaborating with all Russell Group universities to provide online resources for teachers to support their students to succeed. Advancing Access is a suite of free online resources designed to support teachers and advisers in helping students to choose the right university and course, and to understand and navigate the admissions process. The resources are being used by teachers and advisers across the UK, reaching over 850 teachers and careers advisers, at nearly 450 schools and colleges.



Year 7

In-school

If you would like us to attend Careers Fairs or Options evenings if your school is based in Warwickshire or the West Midlands, please complete this online form warwick.ac.uk/schoolsrequest

Year 8

On campus

Ongoing programmes

- ▶ **Warwick Sutton Scholars**
(Multiple Full Day events, 80 places in cohort, Region Warwickshire & West Midlands, November-June)
Applications open: Autumn Term

A two year programme during Years 8 and 9 for highly able pupils who come from backgrounds that are under-represented in higher education. The programme is designed to stretch and challenge pupils academically and inspire them to consider university in the future. Over the course of 6 months students will attend 6 full day sessions held on a weekend at the university and each year group shall explore a different project through taster lectures, workshops, debates and guest speakers.

To find out more about Warwick Sutton Scholars please visit warwick.ac.uk/suttonscholars

In-school

If you would like us to attend Careers Fairs or Options evenings if your school is based in Warwickshire or the West Midlands, please complete this online form warwick.ac.uk/schoolsrequest

Year 9

On campus

One off sessions

- ▶ **Science and Survival Day**
(Full Day, 15 students per school, Region Nationwide, July)
Applications open: Summer Term

An opportunity for Year 9 pupils to spend the day at Warwick's campus exploring how science can help us solve some of the 'big problems' facing the world today. Sessions cover a range of subjects offered within Warwick's Faculty of Science and pupils will have the chance to carry out some hands-on science with some of Warwick's leading academics and current undergraduates.

Ongoing programmes

- ▶ **Warwick Sutton Scholars**
(Multiple Full Day events, Additional places may be available, Region Warwickshire & West Midlands, November-June)
Applications open: Autumn Term

A programme which runs for 2 years during Years 8 and 9 for highly able pupils who come from backgrounds that are under-represented in higher education. The programme is designed to stretch and challenge pupils academically and inspire them to consider university in the future. Over the course of 6 months students will attend 6 full day sessions held on a weekend at the university and each year group shall explore a different project through taster lectures, workshops, debates and guest speakers. There may be additional spaces for pupils to join the programme in Year 9 depending in availability. Please e-mail to enquire.

To find out more about Warwick Sutton Scholars please visit warwick.ac.uk/suttonscholars

In-school

If you would like us to attend Careers Fairs or Options evenings if your school is based in Warwickshire or the West Midlands, please complete this online form warwick.ac.uk/schoolsrequest

Year 10

On campus

One off sessions

- ▶ **Banking and Finance taster day (Full day, Group size 10 students per school, Region Nationwide, May)**

Applications open: Spring Term

Pupils spend the day at the University of Warwick campus to get a flavour of university life, what it would be like to study business/economics at university, as well as hearing from professionals in the world of finance.

To find out more, please visit warwick.ac.uk/pathwaystobanking

- ▶ **Law taster day (Full day, Group size 10 students per school, Region Nationwide, May)**

Applications open: Spring Term

Pupils spend the day at the University of Warwick campus to get a flavour of university life. Pupils hear from current Warwick students, a legal professional and law academics about law degrees and jobs in the legal profession. Pupils will also take part in a mock trial based on a real case!

To find out more please visit warwick.ac.uk/pathwaystolaw

In-school

One off sessions

- ▶ **Banking and Finance taster session (2 hours, Group size 25-30, Region Warwickshire & West Midlands, January-April)**

Applications open: Autumn Term

A two hour interactive workshop for those interested in studying business/economics at university or a career within the financial sector. Also includes advice and guidance on students drafting their first CV to secure work experience.

To find out more about Pathways to Banking and Finance please visit warwick.ac.uk/pathwaystobanking

- ▶ **Law taster session (2 hours, Group size 25-30, Region Warwickshire & West Midlands, January-April)**

Applications open: Autumn Term

A two hour interactive workshop for those interested in studying or pursuing a career in law. Also includes advice and guidance on students drafting their first CV to secure work experience.

To find out more about Pathways to Law please visit warwick.ac.uk/pathwaystolaw

If you would like us to attend Careers Fairs or Options evenings if your school is based in Warwickshire or the West Midlands, please complete this online form warwick.ac.uk/schoolsrequest

Ongoing programmes

- ▶ **UniTracks (Group size 5 per school, Region Nationwide)**

Applications open: end of Year 9 - Autumn Term Year 10

A 4 year national outreach programme for highly able students from Year 10 upwards aiming to break down barriers to accessing Higher Education, encouraging students to apply for and be successful in gaining a place at a leading research intensive university.

Teachers from UniTracks partner schools are invited to nominate five Year 10 highly able students who meet our other eligibility criteria to join a national cohort to learn about university life through events and workshops designed to build their skills, confidence and academic attainment.

To find out more about UniTracks please visit warwick.ac.uk/unitracks

Year 11

On campus

One off sessions

- ▶ **School Warwick Visits (13:00-15:45; Group size up to 50; Region Nationwide; November, January, March, June)**

Applications open: Autumn Term

School Warwick Visits offer Years 11-13 pupils the opportunity to gain a snapshot of the Open Day experience. Each visit enables students to hear from the Recruitment team and gain an insight in to what Warwick has to offer both academically and socially through a short presentation and Q&A. See our campus through a guided campus tour from a student ambassador and find out about our student support services through a mini exhibition of key services available to students across campus. Please e-mail campusvisits@warwick.ac.uk to register your interest.

- ▶ **Banking and Finance taster day (Full day, Group size 10 students per school, Region Nationwide, May)**

Applications open: Spring Term

Pupils will have the opportunity to spend the day at the University of Warwick campus to get a flavour of university life. They will also get a taster of what it would be like to study business/economics at university, as well as hearing from professionals in the world of finance.

To find out more about Pathways to Banking and Finance please visit warwick.ac.uk/pathwaystobanking

- ▶ **Law taster day (Full day, Group size 10 students per school, Region Nationwide, May)**

Applications open: Spring Term

Pupils will have the opportunity to spend the day at the University of Warwick campus to get a flavour of university life. They will hear from current Warwick students, a legal professional and law academics about what a law degree really entails and the range of job opportunities within the legal profession. Pupils will also take part in a mock trial based on a real case!

To find out more about Pathways to Law please visit warwick.ac.uk/pathwaystolaw

In-school

One off sessions

- ▶ **Banking and Finance taster session (2 hours, Group size 25-30, Region Warwickshire & West Midlands, January-April)**

Applications open: Autumn Term

A two hour interactive workshop to include an introduction to university, studying business/economics and interactive business activities. This session is designed as an introduction for those who may be interested in pursuing a business/economics degree or a career within the financial sector.

To find out more about Pathways to Banking and Finance please visit warwick.ac.uk/pathwaystobanking

- ▶ **Law taster session (2 hours, Group size 25-30, Region Warwickshire & West Midlands, January-April)**

Applications open: Autumn Term

A two hour interactive workshop to include an introduction to university, studying law and interactive legal activities. This session is designed as an introduction for those who may be interested in pursuing a law degree or a career within the legal sector.

To find out more about Pathways to Law please visit warwick.ac.uk/pathwaystolaw

If you would like us to attend Careers Fairs or Options evenings if your school is based in Warwickshire or the West Midlands, please complete this online form warwick.ac.uk/schoolsrequest

Year 12

On campus

One off sessions

- ▶ **School Warwick Visits**
(13:00-15:45; Group size up to 50; Region Nationwide; November, January, March, June)
Applications open: Autumn Term

School Warwick Visits offer Years 11-13 pupils the opportunity to gain a snapshot of the Open Day experience. Each visit enables students to hear from the Recruitment team and gain an insight in to what Warwick has to offer both academically and socially through a short presentation and Q&A. See our campus through a guided campus tour from a student ambassador and find out about our student support services through a mini exhibition of key services available to students across campus. Please e-mail campusvisits@warwick.ac.uk to register your interest.

- ▶ **Year 12 Discovery Days**
(Full day, Group size 100, Region Nationwide, March)
Applications open: Autumn Term

This day aims to prepare students to make informed

choices and understand what studying at university means. Students experience attending lectures and seminars in a variety of subject areas within their potential areas of study. They also receive information on the application process and how to choose a course.

- ▶ **Year 12 Sutton Trust Summer School**
(5 day residential, Group size 120 students, Region Nationwide, July)
Applications open: January

Pupils are invited to apply to take part in a 5 day, 4 night residential summer school which focuses on offering pupils an insight in to university study. Pupils apply to study one of a range of six subjects for the entire week. Academic areas are subject to change but have previously included Politics, Law, Physics, Computer Science, Historical Studies and Economics. There is also a varied social programme, including sports activities as well as a BBQ and a formal gala dinner to celebrate the end of the week.

To find out more about summer schools please visit warwick.ac.uk/outreachsummerschools

In-school

One off sessions

- ▶ **Student Funding & Finance - Living & Learning on a Budget**
50-60 mins, Group size 25-30 or larger groups, Region Warwickshire & West Midlands, October-June)
Applications open: September

Through practical engaging activities students will learn how student finance works and how they can maximise their university funding.

If you would like us to attend Careers Fairs or Options evenings if your school is based in Warwickshire or the West Midlands, please complete this online form warwick.ac.uk/schoolsrequest



Ongoing programmes

- ▶ **Pathways to Banking & Finance**
(Full day, Group size 50, Region Warwickshire & West Midlands, October-June)
Applications open: September

A structured 2 year programme providing a cohort of 50 students with the opportunity to find out more about studying Economics and Business, and learn more about the range of careers within financial services, to ensure pupils are in the best position to make an informed decision about their next steps. The programme is run in association with Sutton Trust, Deutsche Bank and London School of Economics. Across the 2 year programme, pupils will attend a range of events including academic taster sessions, undertake placements and insight days in financial institutions and negotiate in sessions with practitioners from the financial sector. Pupils will also take part in a 3 day summer school at the University of Warwick, experiencing life at university.

To find out more about Pathways to Banking & Finance please visit warwick.ac.uk/pathwaystobanking

- ▶ **Pathways to Law**
(Full day, Group size 35, Region Warwickshire & West Midlands, October-June)
Applications open: September

A structured 2 year programme providing a cohort of 35 students with the opportunity to find out more about studying Law and learn more about the range of careers within the legal sector, to ensure pupils are in the best position to make an informed decision about their next steps. Pupils will have the

opportunity to undertake a legal work experience placement at a top law firm or Barristers chambers in Birmingham and take part in a 4 day summer school, experiencing life at university. Pathways to Law runs at 12 universities across the UK and pupils will have the opportunity to attend optional exclusive events at the other universities which include the universities of Leicester, Bristol and Oxford.

To find out more about Pathways to Law please visit warwick.ac.uk/pathwaystolaw

- ▶ **Realising Opportunities**
(Full day, Group size 80, Region Warwickshire & West Midlands, January-March)
Applications open: September

Realising Opportunities is a unique collaboration of 15 leading, research intensive universities, working together to promote fair access and social mobility of students from groups under-represented in higher education. The RO programme provides able Year 12 students with skills and information to help them not only make informed decisions about their future and to raise their aspirations to progress to a leading research intensive university, but to support their current work in school/college during Years 12 and 13. Those who complete both years of the RO programme, pass the academic assignment and apply to Warwick will be eligible to be considered for a reduced offer as a result of having completed the programme.

To find out more about Realising Opportunities please visit warwick.ac.uk/ro



Year 13

In-school

One off sessions

- ▶ **Student Funding & Finance - Living & Learning on a Budget** (50-60 mins, Group size 25-30 or larger groups, Region Warwickshire & West Midlands, October-June)
Applications open: September

Through practical engaging activities students will learn how student finance works and how they can maximise their university funding.

If you would like us to attend Careers Fairs or Options evenings if your school is based in Warwickshire or the West Midlands, please complete this online form warwick.ac.uk/schoolsrequest

On campus

One off sessions

- ▶ **School Warwick Visits** (13:00-15:45; Group size up to 50; Region Nationwide; November, January, March, June)
Applications open: September

School Warwick Visits offer Years 11-13 pupils the opportunity to gain a snapshot of the Open Day experience. Each visit enables students to hear from the Recruitment team and gain an insight in to what Warwick has to offer both academically and socially through a short presentation and Q&A. See our campus through a guided campus tour from a student ambassador and find out about our student support services through a mini exhibition of key services available to students across campus. Please e-mail campusvisits@warwick.ac.uk to register your interest.

- ▶ **A Level Revision Bootcamp** (3 days-not residential, Group size 100, Region Warwickshire & West Midlands, Easter)
Applications open: January

Taking place on campus, selected pupils will be invited to campus for three consecutive days to focus on exam technique, revision strategy and subject and exam board specific materials. They will be run by outstanding local teachers to give students the best chance of achieving highly in their exams.



Spotlight on Programmes

Years 3-6

- ▶ **Warwick Bright Stars**
Applications open: November

In-school

- ▶ **Bright Stars modules (2 hours per week, Group size - one class, January to February 2019 with a graduation ceremony in March 2019)**

Applications open: Early November and eligible schools will be contacted directly

Schools can choose from a range of modules designed and delivered by Warwick students for a couple of hours a week on a Wednesday afternoon for three consecutive weeks in January and February 2019. They will learn about a subject and take part in a research competition. To learn more and fill in our Interest form please visit our website here warwick.ac.uk/study/outreach/whatweoffer/primary/programme

At the end of the programme, the pupils, their teachers and parents will all be invited to join us for a Graduation Ceremony on campus to celebrate their work.

On campus

- ▶ **Bright Stars Campus Days (Full day, Maximum group size 20, February and May 2019)**

Applications open: Early November and eligible schools will be contacted directly

Our campus days are aimed at Key Stage 2 pupils from schools in Coventry and Warwickshire. They have been designed in collaboration with our Academic Departments and Warwick Arts Centre. Our friendly Warwick Student Ambassadors take your pupils on a journey through our university to explore our campus and our Sculpture Trail. Your pupils can ask any questions they have about university and get to hear what life as a student is like at Warwick. Our Academics have also prepared fun sessions for them to spark their imagination and inspire them to become the artists and scientists of tomorrow. warwick.ac.uk/study/outreach/whatweoffer/primary

Years 8-9

- ▶ **Warwick Sutton Scholars**
Applications open: Autumn Term

A two year programme during Years 8 and 9 for highly able pupils who come from backgrounds that are under-represented in higher education. The programme is designed to stretch and challenge pupils academically and inspire them to consider

university in the future. Over the course of 6 months students will attend 6 full day sessions held on a weekend at the university and each year group shall explore a different project through taster lectures, workshops, debates and guest speakers.

To find out more about Warwick Sutton Scholars please visit warwick.ac.uk/suttonscholars

Years 10-13

- ▶ **UniTracks**
Applications normally open towards the end of Year 9. Schools can contact the Programme Manager to find out if they are eligible

Each year of UniTracks has a different focus:

- Year 10: Aspiration - through group projects that help to develop pupils' teamwork, communication and time management skills
- Year 11: Attainment - through revision seminars and a 3-day residential revision Bootcamp during the Easter holidays
- Year 12: Informed Choices - providing the participants with opportunities to explore different subject areas and the chance to do some academic writing

- Year 13: Achieving and Transitions - supporting their attainment via the A Level Bootcamp and their transition to university life

"I think its benefits are in terms of their soft skills and their cultural capital"

Teacher of Year 10 UniTracks Participant on impact of the group project, 2018

"UniTracks ... has completely changed my perception of university and what I wish to pursue post-education"

Year 12 UniTracks Participant

To find out more about UniTracks please visit warwick.ac.uk/unitracks

Year 12

- ▶ **Pathways to Banking & Finance**
Applications open: September, Applications close Sunday 28 October 2018

In 2017/18:

- 8 financial organisations including Deutsche Bank, PwC and EY offered work experience placements to Pathways to Banking & Finance students.
- Students attended events at investment banks in Birmingham and London.
- Pathways to Banking & Finance students took part in an exclusive summer school with other Pathways students from London School of Economics.

- Pathways to Law students took part in an exclusive summer school with other Pathways students from across the country at the University of Warwick free of charge.

"The programme has strongly influenced me to pursue a career in Law, preparing me for university whilst making fantastic friends along the way. It is a once in a lifetime experience and even if you do not want to do Law it is still very beneficial preparation for university."

Cohort 11 participant 2017

- ▶ **Realising Opportunities**
Applications open: September

92% of RO students are in work or further study six months after graduation compared to 90% national average.

"Realising opportunities gave me the confidence to apply for universities that, otherwise, would have seemed out of reach for me."

Cohort 7 participant 2016, 1st year student at Warwick

"Pathways to Banking & Finance is an amazing experience for people who aren't from traditional backgrounds and may not have the access needed for a career in finance. You get amazing opportunities you wouldn't get anywhere else."

Cohort 1 participant 2017

- ▶ **Pathways to Law**
Applications open: September, Applications close Sunday 14 October 2018

In 2017/18:

- 100% of all Year 12 students had the opportunity to undertake a multiple-day work experience placement at a law firm.
- Students had the opportunity to attend Pathways events at other universities, including Oxford and Bristol.

"The programme has encouraged me to work harder to achieve the grades I want so I can get into a research intensive university. It has also helped me to decide which universities I want to apply to."

Cohort 5 participant 2014

CONTACT US

To find out more about a particular programme contact a member of the team or look online.

Experience Warwick: Partnership Programme

Tel: 024 7615 0612

Email: outreach@warwick.ac.uk

Web: warwick.ac.uk/experiencewarwick

Student Funding & Finance

Tel: 024 7657 5595

Email: fundingoutreach@warwick.ac.uk

Web: warwick.ac.uk/studentfunding/outreach

Student Progression Team

Tel: 024 7615 1593

Email: spt@warwick.ac.uk

Web: warwick.ac.uk/spt

Realising Opportunities

Tel: 024 7615 1428

Email: rowarwick@warwick.ac.uk

Web: warwick.ac.uk/ro

Pathways to Banking & Finance

Tel: 024 7615 0584

Email: pathways@warwick.ac.uk

Web: warwick.ac.uk/pathwaystobanking

Pathways to Law

Tel: 024 7615 0584

Email: pathways@warwick.ac.uk

Web: warwick.ac.uk/pathwaystolaw

UniTracks

Tel: 024 7652 4773

Email: unitracks@warwick.ac.uk

Web: warwick.ac.uk/unitracks

Sutton Scholars

Tel: 024 7615 1947

Email: suttonscholars@warwick.ac.uk

Web: www.warwick.ac.uk/suttonscholars

General Enquiries

Tel: 024 7657 3555

warwick.ac.uk/outreach

 **FOLLOW US** @OutreachWarwick

 Outreachatwarwick