



Overview: Wisconsin Healthcare- Associated Infections in Long-Term Care Coalition UTI Toolkit



UTI Toolkit – Module 1

Narration by:

Brenda J. Ryther, RN, MSN

Nurse Researcher

University of Wisconsin-Madison



Content developed in partnership with the Wisconsin
Healthcare-Associated Infections in Long-Term Care Coalition



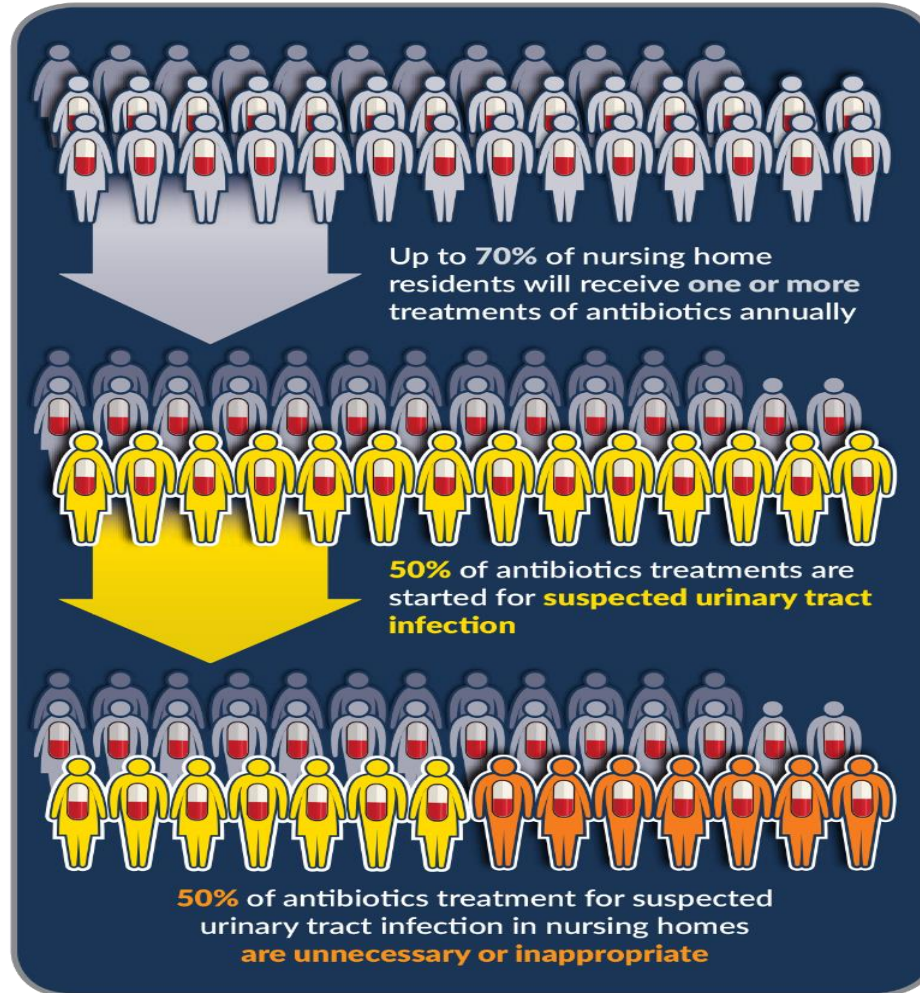
Wisconsin Partnership Program
UNIVERSITY OF WISCONSIN
SCHOOL OF MEDICINE AND PUBLIC HEALTH

Funding for this project was provided by the Wisconsin Partnership Program
at the UW School of Medicine and Public Health



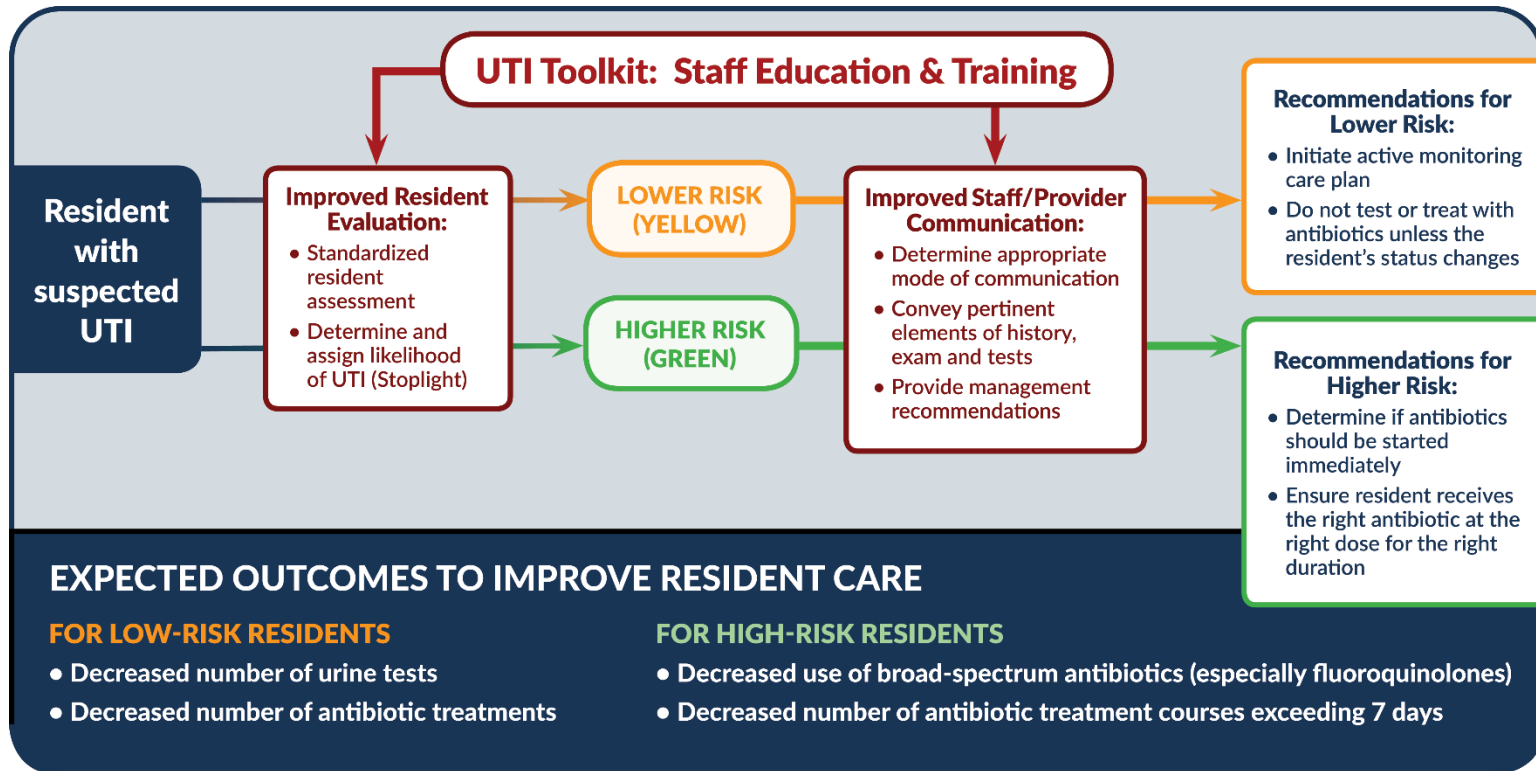
The Problem

ANTIBIOTIC USE IN NURSING HOMES





Toolkit Objectives





WI HAI in LTC Coalition

UTI Toolkit

The UTI Toolkit is comprised of 5 modules. Content includes presentations, resources and references to help nursing home staff improve the management of suspected UTIs.

- Overview & Rationale
- UTI Prevention
- Urine Testing
- UTI Treatment
- Quality Improvement



Overview and Rationale

- This module is organized into three sections.
 - Background and overview of the Wisconsin Urinary Tract Infection (UTI) Toolkit.
 - Clinical rationale for antibiotic stewardship.
 - Related regulatory information.



How to Prevent CAUTI

- This module is organized into three sections.
 - Background and risk factors for indwelling urinary catheter use and CAUTI.
 - Appropriate indications and alternatives for indwelling catheter use.
 - Indwelling catheter insertion and maintenance.



When to Test a Urine Specimen

- This module is organized into four sections.
 - Urinary tract infections, definitions and signs/symptoms.
 - Introduction to the UTI Stoplight Tool and When to Test Urine-Nursing Tool.
 - Practical application of the When to Test Urine-Nursing Tool to case studies.
 - Suggested educational plan for implementing the tools and resources.



When and How to Treat a UTI

- This module is organized into four sections.
 - Clinical decision about when to treat a suspected urinary tract infection and the five moments of antibiotic decision-making.
 - Basic principles related to initiating treatment, along with guidance about empiric treatment of uncomplicated and complicated urinary tract infection.
 - Opportunities to modify existing antibiotic therapy, including antibiotic timeout.
 - Collaborative role of the pharmacist in antibiotic stewardship and establishing a Collaborative Practice Agreement.



Quality Improvement

- This module includes presentations and additional resources.
 - Preparing for Successful Organizational Change
 - Coaching Change Through Data-Driven Teamwork
 - Sustainability of Organizational Change
 - Sustainability Planning
 - Antibiotic Stewardship, Antibiograms, etc.



Thank You!