

Owner's Manual



817 Maxwell Avenue • Evansville, IN 47711

800 - 694 - 9494 • fax 812 - 467 - 1245

www.cajunbowfishing.com

Contents

Important Bow Information	3-4
Archery Safety & Warnings	5-6
Care & Maintenance	7-8
Bow/Cam Adjustments	9-12
Initial Bow Setup	13-16
Part Diagrams	17-18
Reel Installation	19-20
Arrow Slide/Shooting Instructions	21-22
Reel Replacement Instructions	23-24
Warranties	25-27

Record important bow information here and keep for future reference.

Model: _____

Weight Range: _____

Draw Length: _____

String Length: _____

Cable Length: _____

Purchased From: _____

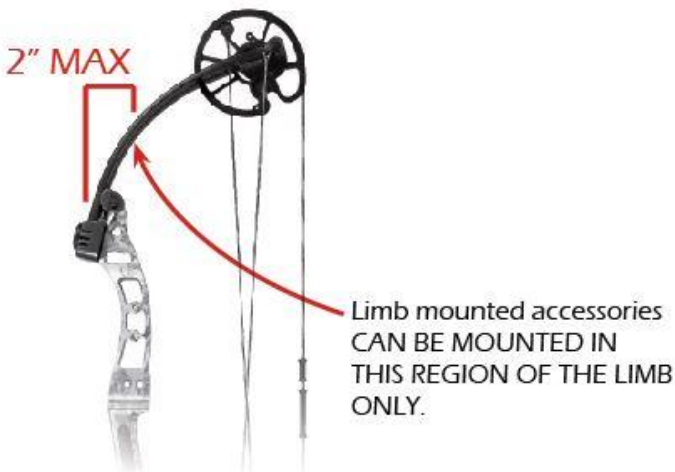
Date Purchased: _____

Serial Number: _____

Congratulations! Your new Cajun Bowfishing compound bow is the finest available. It has been engineered for accuracy, long life, and built with quality and pride. No other bowfishing bow delivers a higher performance to value ratio than a Cajun. We know how much you are going to enjoy your new bow. For this reason, we ask you read the Care and Maintenance section carefully to learn how easy it is to maintain the quality, performance, and level of satisfaction you expect from a Cajun Bowfishing product. ENJOY YOUR NEW BOW!

!IMPORTANT LIMB INFORMATION!

Your new Cajun Bowfishing bow uses the latest technology in limb design. This creates a limb capable of storing optimal amounts of energy unlike any other bow in the industry. For that reason, the use of limb mounted accessories such as vibration dampeners must be restricted. These particular accessories **MUST NOT BE** mounted more than 2 inches from the limb pockets. Mounting limb accessories more than 2 inches away from the pockets, particularly clamping type accessories, can potentially damage the limbs and void the warranty. See the illustration below.



IMPORTANT PRESS INFORMATION

Due to the innovative and advanced design of your Cajun Bowfishing bow limbs, it is of the utmost importance that your bow ONLY BE PRESSED IN PROPER BOW PRESSES.

Traditional style presses that use rollers to apply pressure only to the mid section of the limbs CANNOT BE USED. Only presses that are capable of applying pressure to the last 2" of the limbs should be utilized, as illustrated below



DO NOT USE THIS STYLE BOW PRESS

APPROVED BOW PRESSES

For the most up to date and accurate list, please visit your local Cajun Bowfishing dealer or www.beararcheryproducts.com

⚠ WARNING Failure to adhere to this list of presses can result in immediate failure of the limbs, possible injury and void the manufacturer's warranty.

!SAFETY FIRST!

Before using this equipment, read and follow these manufacturer's instructions carefully. If you have any questions, contact the manufacturer or a qualified dealer.

⚠ WARNING Dry-firing a bow severely reduces the life expectancy of the bow and may cause immediate damage to the bow resulting in injury to yourself or others. Never dry-fire your bow! Never pull back and release the bowstring without an arrow attached to the string. Your bow is designed to transfer energy to a properly weighted arrow.

⚠ WARNING Shooting underweight arrows has the same effect as dry-firing a bow and may cause serious injury. Use the proper arrow for you and your bow. If you are unsure about your arrow choice, contact your local Bear Archery dealer or an arrow manufacturer.

⚠ WARNING Do not use wooden arrows. They are not designed for use with this compound bow and may cause serious injury. Use the proper arrow for you and your bow. If you are unsure about your arrow choice, contact your archery dealer or an arrow manufacturer.

⚠ WARNING Inspect your arrows and nocks regularly. Immediately discard any dented, split, splintered or otherwise damaged arrows and replace cracked or broken nocks.

⚠ WARNING Do not draw your bow beyond its maximum draw length as damage to the limbs, cables and strings could occur.

⚠ WARNING The use of safety glasses is recommended with any archery product.

Targets and Hunting Safety

- Never aim at anything you don't intend to shoot.
- Never point or aim a drawn bow at another person.
- Never draw or shoot when anyone is between you and your target.
- Never shoot at a target or object unless you are sure that it can stop your arrows.
- Make sure the area behind and around your target is clear.
- Before shooting, be sure that no part of the bow will strike any tree branches or other obstacles.
- Never shoot arrows straight up in the air or in any direction where you might destroy property or endanger life.

Pre-shooting checklist

Are these items in good condition? Properly installed? In working order?

Cables_____

Reel_____

String_____

Arrow Rest_____

String Serving_____

Arrow Nocks_____

Loop/Nock set_____

Arrow Shafts_____

Cable Slide_____

Set Screws_____

CARE AND MAINTENANCE

With proper care and a minimum amount of routine maintenance, your bow will be kept in top condition. However, it is still important to carefully inspect your bow on a regular basis.

Cleaning

Your bow should be kept clean of dust, mud and grime. Use a damp soft cotton cloth to remove dirt and moisture. Do not use solvents such as acetone or mineral spirits as they may ruin the finish.

Storage and Transportation

Avoid exposing your bow to temperatures over 150 degrees. Excessive heat may damage your bow. Do not leave your bow unprotected in your vehicle on a hot sunny day or store in a hot attic or other hot enclosed area. Clean your bow thoroughly after each use. Never put your bow away wet or store it in a damp place. Lightly oil all steel parts (axles, mounting screws) to prevent rust. You can relax the limbs if storing for more than a year. Follow the instructions under Peak Draw Weight Adjustment in the bow adjustment section.

Bow Presses

Use only “double-pull” type APPROVED bow presses. A “double-pull” bow press draws your bow down at two points on the riser. Older style “single-pull” bow presses that contact the bow only in the grip area can result in bent or broken risers. To reduce unnecessary stress on the riser, back off the limb bolts 2-3 turns before placing in a press.

Lubrication

Your Bear Archery compound bow requires very little lubrication. Wipe the cable guard periodically with a dry cloth to keep the cable slide running smoothly and free of dust. Cam and idler wheel bearings do not require lubrication. If other lubrication is necessary, use white lithium grease or Teflon™ lubricants. Avoid excessive lubrication of any item, as this can attract dirt. On hunting bows, avoid lubricants with obvious odors.

String and Synthetic Cable Maintenance

Regularly apply a high quality bowstring wax to your string and synthetic cable system. Regular waxing protects your cables and strings from abrasion, wear and separation. Smear the wax into position. Then, rub it gently with your fingers or a soft piece of leather to work the wax into the strands. Replace frayed or worn bowstrings and cables immediately.

- Bear Archery strongly recommends replacing the bowstring and cable annually. Please visit your local Bear Archery dealer for assistance.

BOW ADJUSTMENTS

Peak Draw Weight Adjustment

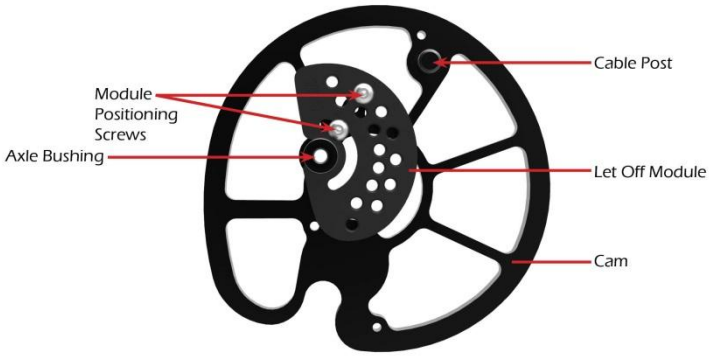
Using a 3/16" hex wrench, turn the limb bolts clockwise to increase peak weight and counter-clockwise to reduce peak weight. Bow weight will increase or decrease approximately two to four pounds per turn.

IMPORTANT Both limb bolts must be adjusted equally. Likewise, do not turn one limb bolt more than two turns ahead of the other when making adjustments. Finally, limb bolts must never be backed out more than 14 turns.

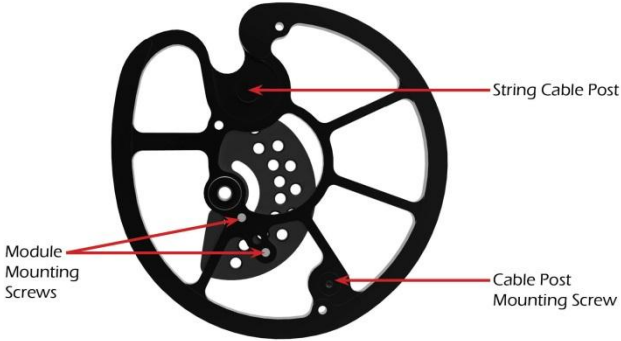
The adjustable multidraw cam equipped bow can be configured to provide a draw length from 17" to 31" in 1" intervals. No bow press is required to adjust the multidraw cam system. To adjust the draw length, first remove the socket head cap screws located in the rotating module. Next rotate the module to the desired draw length and reinstall the screw in the corresponding hole. It may be necessary to pull the cable away from the module to provide clearance for the module to rotate, see the picture below. Next perform the same operation on the opposite cam. Be sure that both the top and bottom cams are set to the same draw length position.

The modules are labeled with the designation RH-XXX or LH-XXX for left hand and right handed bows. If the bow is a RH bow, the module that would fit the top cam would be designated RH-TOP, and for the bottom cam the designation would be RH-BTM. The designation should be visible to the user, opposite of the cam. If the bow is a LH bow, the module that would fit the top cam would be designated LH-TOP, and for the bottom cam the designation would be LH-BTM. The designation should be visible to the user, opposite of the cam.

SUCKER PUNCH – ADJUSTABLE DRAW MODULE

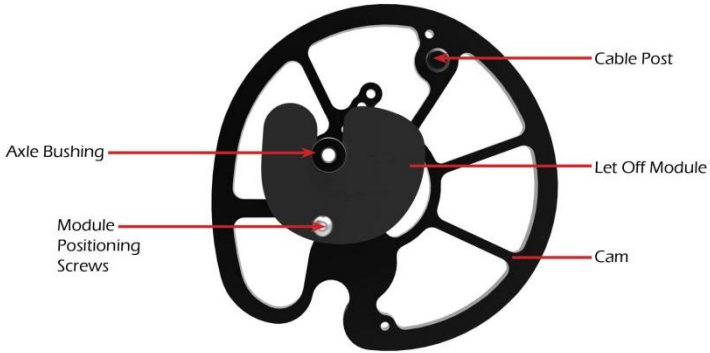


CAM - Front View

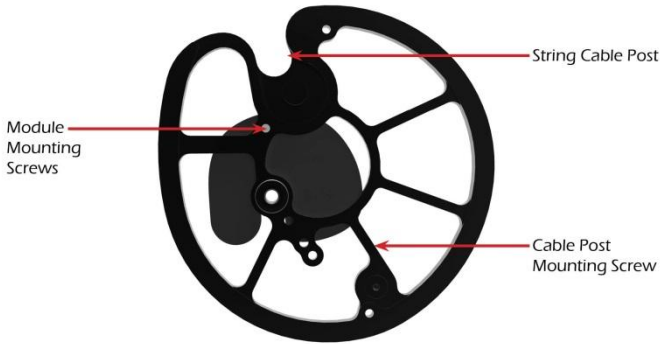


CAM - Back View

SUCKER PUNCH – CONSTANT DRAW MODULE



CAM - Front View



CAM - Back View

The adjustable cam operates on a sliding poundage scale where an increase in draw length also provides an increase in peak draw weight. This allows the bow to grow with the archer. The chart below shows the peak draw weight at each draw length for the 50 pound peak bow.

Draw Length (in.)	Peak Weight (lbs.)
31	51
30	50
29	49
28	48
27	47
26	45.5
25	44
24	42
23	40
22	38
21	35
20	32
19	32
18	32
17	32

INITIAL BOW SETUP

Before you can safely and effectively shoot your bow, a number of specific initial bow setup steps must be taken. These steps can be performed on your own, if your level of expertise is adequate. Or, your local Bear Archery dealer can help you.

Arrow Rest Installation & Setup

Arrow rests should be installed according to the manufacturer's specifications. The first adjustment you need to perform is setting the vertical height of your arrow rest. When properly adjusted, your arrow rest should align the centerline of the arrow with the center of the two holes used to mount the rest to the riser. To check this, place an arrow in the rest and nocked on the string. Visually confirm the center of the arrow passes directly through the center of the arrow rest mounting holes when viewed from the side. If not, adjust your rest up or down to correct.

Next, the rest should be adjusted for proper "Centershot". With an arrow in the rest and nocked on the string, firmly hold another arrow against the inside of the riser near the arrow rest mounting holes as illustrated. Look down the arrows and verify that the arrows are parallel to each other. In other words, the spacing between the two arrows should be the same along the entire length of the arrows. If not, adjust your rest side to side to correct. This is only your "initial" centershot and additional fine tuning may be required depending on your shooting style and equipment. Please refer to the images on the next page for further reference.

Place arrow firmly against inside of riser as shown.



Arrow rest should support the arrow in such a way that the arrow's centerline passes directly through the center of the two arrow rest

Arrows should be parallel along their entire length.



Nocking Point and Nock Adjustment

Now that the initial centershot setting is complete, you need to verify your arrow nocking point. Install the nocking point or string loop on the bowstring so that when an arrow is nocked it creates a 90 degree angle to the string. Another option is to use a process similar to the one used to determine centershot. With an arrow in the rest and nocked on the string, firmly hold another arrow against the shelf of the riser as illustrated. Look down the arrows and verify that the arrows are parallel. In other words, the spacing between the two arrows should be the same along the entire length of the arrows. If not, adjust your nocking point up or down to correct.

At this time, adjust arrow fletch position to correspond with the arrow rest you are using. Such adjustments are done by simply rotating or replacing the arrow's nock. Carefully position the nock to provide proper fletch clearance through the arrow rest. Your local Bear Archery dealer can show you how to do this or can provide the service for you. Please refer to the images on the next page for further reference.

Install All Accessories

After your arrow rest and nocking point are installed correctly you will need to install all other accessories such as sights, quivers, silencers, peep sights, stabilizers, etc. Before mounting ANY accessories to the limbs, Refer to page 3 for important limb information.



Place arrow firmly against shelf of riser as shown.



Arrows should be parallel along their entire length





SUCKER PUNCH PART LIST

ITEM #	PART DESCRIPTION	ITEM #	PART DESCRIPTION
SP - 1	LIMB	SP - 10	CONSTANT DRAW MODULE
SP - 2	LIMB ROCKER	SP - 11	LET OFF MODULE
SP - 3	LIMB BOLT	SP - 12	STRING
SP - 4	POCKET	SP - 13	CABLE
SP - 5	RISER	SP - 14	BLISTER BUSTER
SP - 6	PANEL GRIP	SP - 15	CABLE ROD
SP - 7	PANEL GRIP SCREW	SP - 16	CABLE GUARD
SP - 8	RH TOP CAM	SP - 17	RH BOTTOM CAM
SP - 9	LH TOP CAM	SP - 18	LH BOTTOM CAM

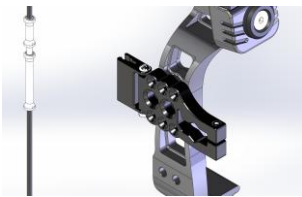


HYBRID REEL PART LIST					
ITEM #	PART DESCRIPTION	ITEM #	PART DESCRIPTION	ITEM #	PART DESCRIPTION
CH-1	MOUNTING BRACKET	CH-14	BOTTLE CAP	CH-27	FRONT COVER ASSEMBLY
CH-2	8-32 x 1 SHCS	CH-15	FEEDER ASSEMBLY	CH-28	2-56 GEAR PLATE SCREW
CH-3	8-32 x 0.625 SHCS	CH-16	BOTTLE	CH-29	2-56 x 0.4375 SIDE COVER SCREWS
CH-4	ELEVATION BLOCK	CH-17	STRING LOOP	CH-30	8-32 x 0.3125 TRUSS HEAD
CH-5	LEFT SIDE COVER	CH-1718	10-24 x 1.875 RHMS & NUT	CH-31	RIGHT SIDE COVER
CH-6	SPRING POST	CH-19	ARROW CADDY	CH-32	HANDLE ASSEMBLY
CH-7	GEAR CAP	CH-20	10-24 x 1 SCHCS	CH-33	WHEEL BALL BEARING
CH-8	CATCH SPRING	CH-21	8-32 x 0.625 SHCS	CH-34	GEAR BALL BEARING
CH-9	LEVER CATCH	CH-22	WINDAGE BLOCK	CH-35	GEAR
CH-10	2-56 x .3125 PHMS	CH-23	WHEEL ASSEMBLY	CH-36	GEAR BEARING DISK
CH-11	TRIGGER MOUNT	CH-24	LEVER ASSEMBLY	CH-37	GEAR SURFACE
CH-12	TRIGGER ARM	CH-25	LEVER AXLE	CH-38	TENSION ADJUSTMENT SCREW
CH-13	TENSION KNOB	CH-26	TORSION SPRING		

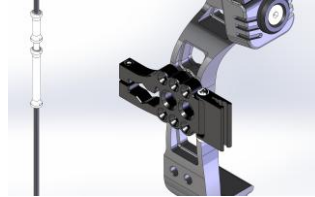
REEL INSTALLATION

Installation of Cajun Reel on Compound Bows:

- 1- Determine if reel will be mounted in the rear or forward portion of the bow (see image).



Forward



Rearward

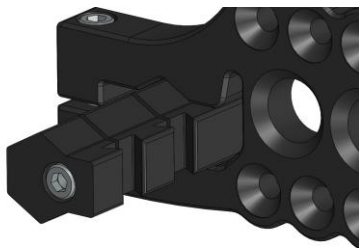
- 2- Position the reel Mounting Bracket (CH-1) so that the desired holes are in line with the sight holes on your bow.
- 3- Insert two 10-24 x 1" socket head counter sunk screws (CH-20) through the reel bracket into the sight holes of the riser and tighten.
- 4- Position of the reel can be changed by loosening the screws of the windage and elevation components. This will allow the reel to be adjusted in the X, Y, and Z axis.
 - X-axis adjustments can be made by rotating the Windage Block (CH-22) 180 degrees in the Mounting Bracket (see image).



X-Axis Adjustment

- Y-axis adjustment can be made by sliding the Elevation Bracket (CH-4) through the dovetail joint in the Windage Block. If additional elevation is needed, flip the mounting bracket 180 degree in step 1.

- Z-axis adjustment can be achieved by sliding the Windage Block through the Mounting Bracket. If Z-axis adjustment is prohibited by the riser, axis adjustment can be made by moving the Elevation Block to the second dovetail joint of the Windage Block (see image).



- 5- Once the optimal placement is determined, tighten down all screws.

Line Care and Maintenance

- 1- Line in a new reel may be twisted or tangled. Prior to shooting and fishing, cock the reel trigger and toss the entire line into the water. Slowly reel in the line allowing the line to untwist
- 2- Line will settle during storage and transportation and could cause knots in your line. It is recommended that the line be wet before fishing. Toss the entire line into the water and slowly reel in the line before each use.
- 3- Check line regularly for snags and/or fraying and replace as needed. It is recommended that only Cajun Replacement Line be used in the Hybrid Reel.
- 4- The Hybrid Reel by Cajun Bowfishing will hold 25 Yards of 250# Cajun Bowfishing String. Do not overfill the bottle!

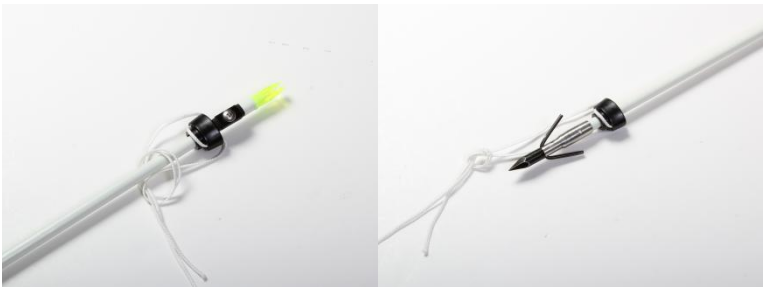
Arrow Slide

- 1- Install ACS Slide over the nock if possible, if not, remove the nock and replace when finished. Ensure that the wide flat part of the slide faces rearward so that it impacts the pad.
- 2- Install the arrow stop and ironclad pad protector using the stainless steel mounting screw. Place the pad on the arrow shaft followed by the ironclad pad protector ensuring the holes are aligned. Secure using the stainless screw. Do not over tighten!
- 3- (A) Attach the slide to the string by threading the line through the back of the slide, over the top, then back out the opposite hole on the back of the slide. (B)(C)(D) Tie an overhand knot 4" from the slide passing the entire arrow through the loop starting with the point.



(A)

(B)



(C)

(D)

Shooting instructions

Arrow snap back is a serious safety concern for bow fishermen. Arrow snap back occurs when the bowfishing line becomes tangled around a part of the bow preventing the arrow from leaving the bow. The ACS from Cajun, if used properly, helps to eliminate this concern by keeping the string in front of the arrow rest and bow at all times, greatly reducing the chances of the string becoming tangled.

- 1- With the slide stop pad facing upward, nock an arrow. The slide stop should always face upward to prevent interference with the arrow rest.
- 2- Make sure that your slide is in front of your arrow rest, and that any excessive line is reeled in. Do not use an arrow rest that could allow the slide to pass over the rest.
- 3- The reel will remain in the closed position to prevent excess string from falling out of the reel. Cock the reel trigger, and you are now ready to start fishing.
- 4- After a shot, simply turn the handle to retrieve the line.
- 5- For larger fish it is recommended to pull the line in hand over hand to prevent damage or loss of equipment.
- 6- For shooting smaller fish, the Tension Adjustment Knob (CH-13) can be turned clockwise to increase the torque on the wheels so that line can be retrieved.
- 7- For smoother reeling, reduce the torque on the wheels by turning the Tension Adjustment Knob counter clockwise.

Replacement part instructions for the Hybrid Reel by Cajun Bowfishing

1. Remove the 4 screws (CH-10) and remove the Trigger Arm (CH-12).
2. Loosen the two set screws on the end of the Trigger Mounts (CH-11) and slide the Trigger Mounts off of the Lever Axle (CH-25).
3. Loosen the three screws (CH-29) on the Right Side Cover (CH-31) and slowly remove the cover.
4. Loosen the 1 screw (CH-23) on the left Side Cover (CH-5) that drives into the Feeder Assembly (CH-15).
5. Remove the Base Assembly, which includes the Elevation Block (CH-4), Lever Assembly (CH-24), and other secured small parts.
6. Replace the Wheel Assembly (CH-23) if needed. Ensure the wheel is inserted with the 4 tabs on the left side.
7. If the Torsion Spring (CH-26) needs to be replaced, follow step 7 instructions:
 - a. Remove the Feeder (CH-15) and Bottle Cap (CH-14) from the Elevation Block (CH-5)
 - b. Turn the Torsion Adjustment Knob (CH-13) counter clockwise until it is disconnected from the Tension Screw (CH-38)
 - c. Slide the Lever Axle (CH-25) out of the Elevation Block (CH-4) and Lever Assmby (CH-24)
 - d. Replace the Torsion Spring (CH-26) and slide the Lever Axle (CH-25) back through the Elevation Block (CH – 4) and Lever Assembly (CH-24).
 - e. With the lever centered in the Elevation Block (CH-4) push the Torsion Adjustment Screw back (CH-38) through the hole in the Elevation Block (CH-4). Ensure that the two ends of the Torsion Spring (CH-26) are sitting in the channels on the Torsion Screw. Carefully thread the Torsion Adjustment Knob (CH-13) onto the Torsion Screw (CH 38).
 - f. Replace the Feeder Assembly (CH-15) and continue to Step 8.
8. Make sure the Wheel Assembly (CH-23) is installed before continuing to Step 9. . Ensure the wheel is inserted with the 4 tabs on the left side.
9. Slide the Base Assembly onto the Left Side Cover (CH-5) by inserting the Lever Axle (CH-24) into the open hole on the Left

Side Cover (CH-5).

10. Slide the Right Side Cover (CH-31) onto the Lever Axle (CH-25) and ensure the Lever Catch (CH-9) is inserted into the boss on the back side of the Right Side Cover.
11. Pinch the Reel together, and use a pair of pliers to cock the reel assembly.
12. With the reel in the cocked position, work the Wheel Assembly (CH-23) into the appropriate boss on the Right Side Cover (CH-31). Once the Wheel Assembly falls into the boss, the Side Cover will seat itself to the Reel.
13. Insert the three screws (CH-29) on the Right Side Cover (CH-31) and tighten the screws. Do not over tighten.
14. Replace the Trigger Mounts (CH-10) to each side of the Lever Axle (CH-25).
15. Line up the trigger the Trigger (CH-12) and insert the 4 screws (CH-10). Tighten the 4 screws, but do not over tighten.
16. Snug the two set screws on the end of the Trigger Mounts (CH-11). Do not over tighten.

Cajun Bowfishing Bow Warranty Statement

All Cajun Bowfishing compound bows are backed with a Limited Lifetime Warranty to the original owner. This warranty applies to limbs, risers, and cams. This warranty consists of the following programs:

Limbs: 100% covered at no charge for the first 5 years, 50% of replacement cost after.

- Risers: Lifetime Warranty.
- Cams: Lifetime Warranty.

Original Owner

Warranty applies only to the original owner and is not transferable. Proof of purchase may be required.

Items Not Covered

Cables, strings, bearings, paint and/or film dipped finishes resulting from normal wear and tear are not included in this warranty.

Damage Not Covered

Damage caused by abuse, mishandling, dry firing, alteration or modification made to original products are not covered under this warranty. The use of any bow press other than those approved by Cajun Bowfishing will void this warranty.

Additionally, shooting of arrows less than 5 grains per pound of peak draw weight will void this warranty. Cajun Bowfishing reserves the right to make parts substitutions on warranty coverage at Cajun Bowfishing's sole discretion, for any reason.

Bow Warranty Registration

For this warranty to be in effect, the on-line warranty registration process must be completed at www.cajunbowfishing.com and submitted within 30 days of purchas

Cajun Bowfishing Warranty Statement Continued

In the event a bow requires warranty service, please contact the Cajun Bowfishing Customer Department at 800-694- 9494 for a return authorization (RA) number and return shipping instructions. For full warranty details, please log on to cajunbowfishign.com for further information.

Key Contact data Dealer 800 Number: 800-694-9494 Dealer Fax
Number: 812-467-1245
Web: www.CajunBowfishing.com

©2014 Cajun Bowfishing

2014 Cajun Equipment Warranty

Cajun Archery provides a Limited Lifetime Warranty on its products. All products are covered against breakage due to defects in materials, and workmanship from the date of purchase. Abuse or alteration of the product voids the warranty.

In the event of breakage due to defects in materials or workmanship the liability of Cajun Archery shall be limited to the lesser of the cost of repairing, or replacing the broken part. In any event, the cost shall never exceed the original retail price of the product. Failure to follow all recommended installation instruction of any Cajun Archery product may void this warranty.

Original Owner: Warranty applies only to the original owner, and is not transferable.

Damage Not Covered: Although Cajun Archery warrants all products are free from defects in materials or manufacturing, Cajun Archery is not responsible for personal / property harm to you, any equipment, or others due to misuse, misapplication, improper installation, or any other form of misuse or abuse of a Cajun Archery product. It is strongly recommended that any installation of any Cajun Archery product is done by an experienced, qualified, and competent Pro Shop for the safety of you and your equipment. In the event an item requires warranty service, please contact Cajun Archery Customer Relations department at 1-800-694-9494 for a return authorization (RA) number and return shipping instructions. For full warranty details, please log on to www.cajunbowfishing.com for further information.

Key Contact Data:

Dealer toll free Number: 1-800-694-9494

Dealer Fax Number: 1-812-467-1245

Web: www.cajunbowfishing.com